

Lebanon Fire Risk Bulletin



CIVIL DEDEFENCE

Refer to cadast table condition.

Please note that the indicated temperature is at 2 meters height from the ground.

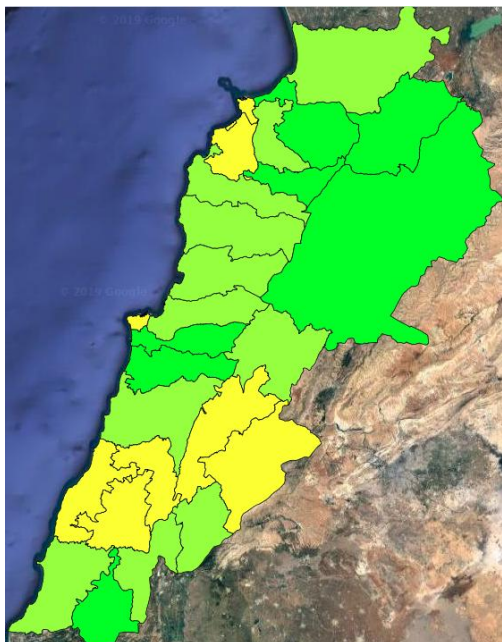
General description of potential fire risk situation

Symbol	Level of risk	Meaning and actions
VL	Very low	Very low fire risk. Controlled burning operations can be hardly executed due to high fuel moisture content. Normally wildfires self-extinguish.
L	Low	Low fire risk. Controlled burning operations can be executed with a reasonable degree of safety.
ML	Medium low	Medium-low fire risk. Controlled burning operations can be executed in safety conditions. All the fires need to be extinguished.
M	Medium	Medium fire risk. Controlled burning operations would be avoided. All the fires need to be very well extinguished.
M	Medium high	Controlled burning is not recommended. Open flame will start fires. Cured grasslands and forest litter will burn readily. Spread is moderate in forests and fast in exposed areas. Patrolling and monitoring is suggested. Fight fires with direct attack and all available resources.
H	High	Ignition can occur easily with fast spread in grass, shrubs and forests. Fires will be very hot with crowning and short to medium spotting. Direct attack on the head may not be possible requiring indirect methods on flanks. Patrolling and monitoring the territory is highly suggested.
E	Extreme	Ignition can occur also from sparks. Fires will be extremely hot with fast rate of spread. Control may not be possible during day due to long range spotting and crowning. Suppression forces should limit efforts to limiting lateral spread. Damage potential total. Patrolling and monitoring the territory is highly suggested.

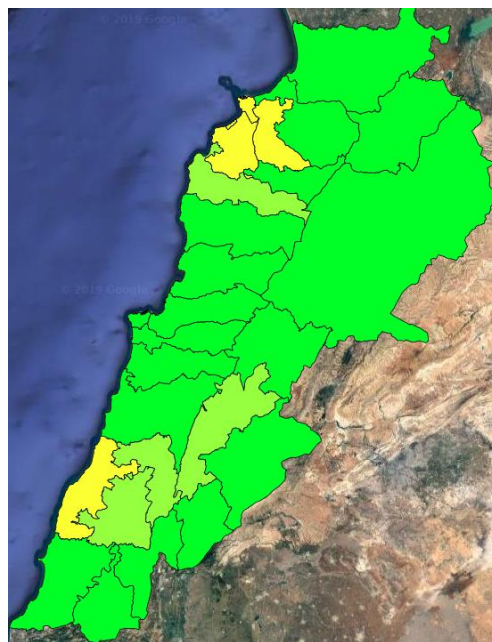
Beirut, 11 April 2019

FIRE RISK INDEX

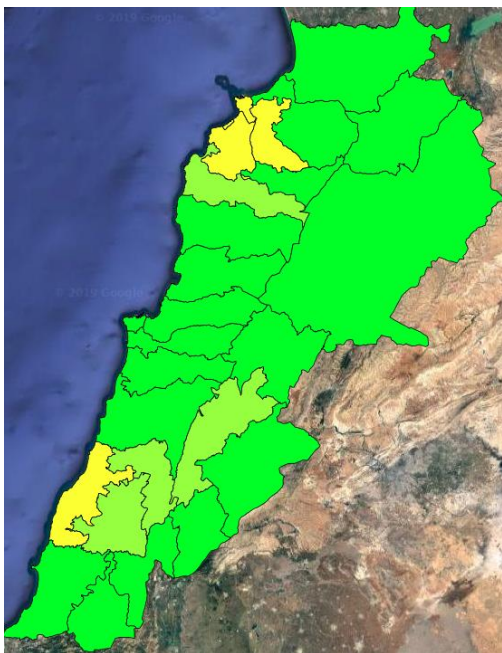
10 April 2019



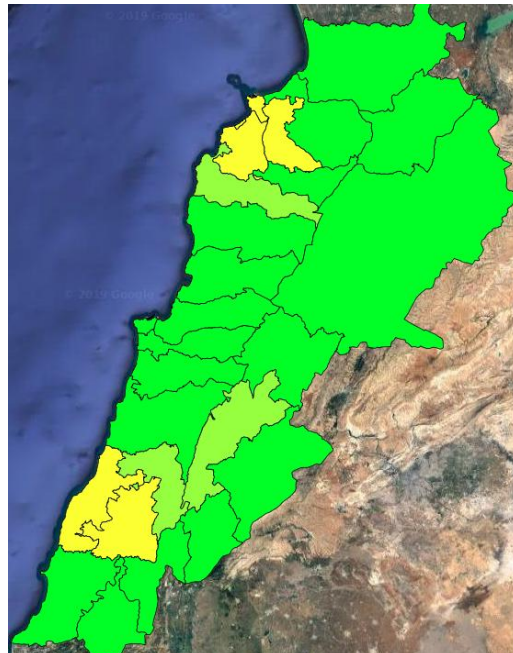
11 April 2019



12 April 2019



13 April 2019

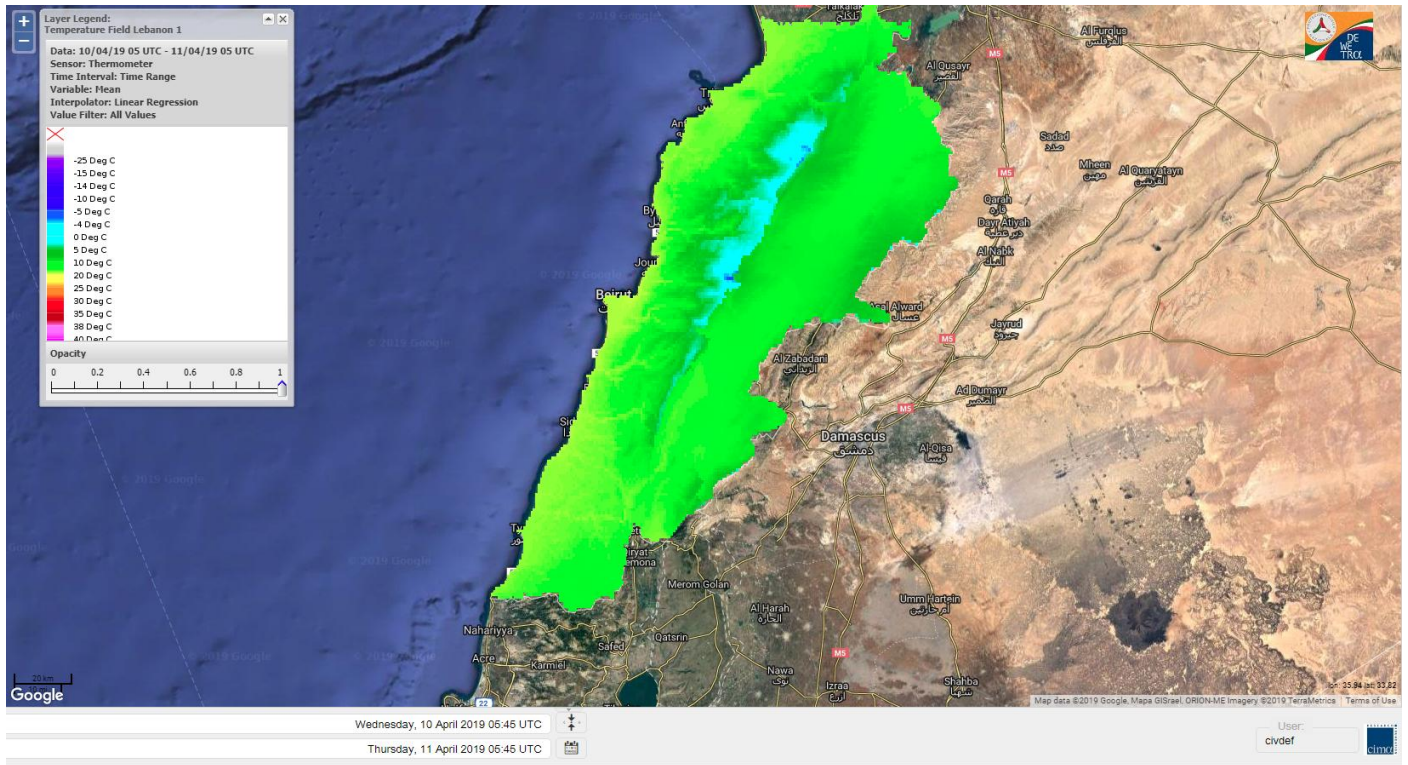


Layer Legend:
Lebanon Wildfire Risk Index 1

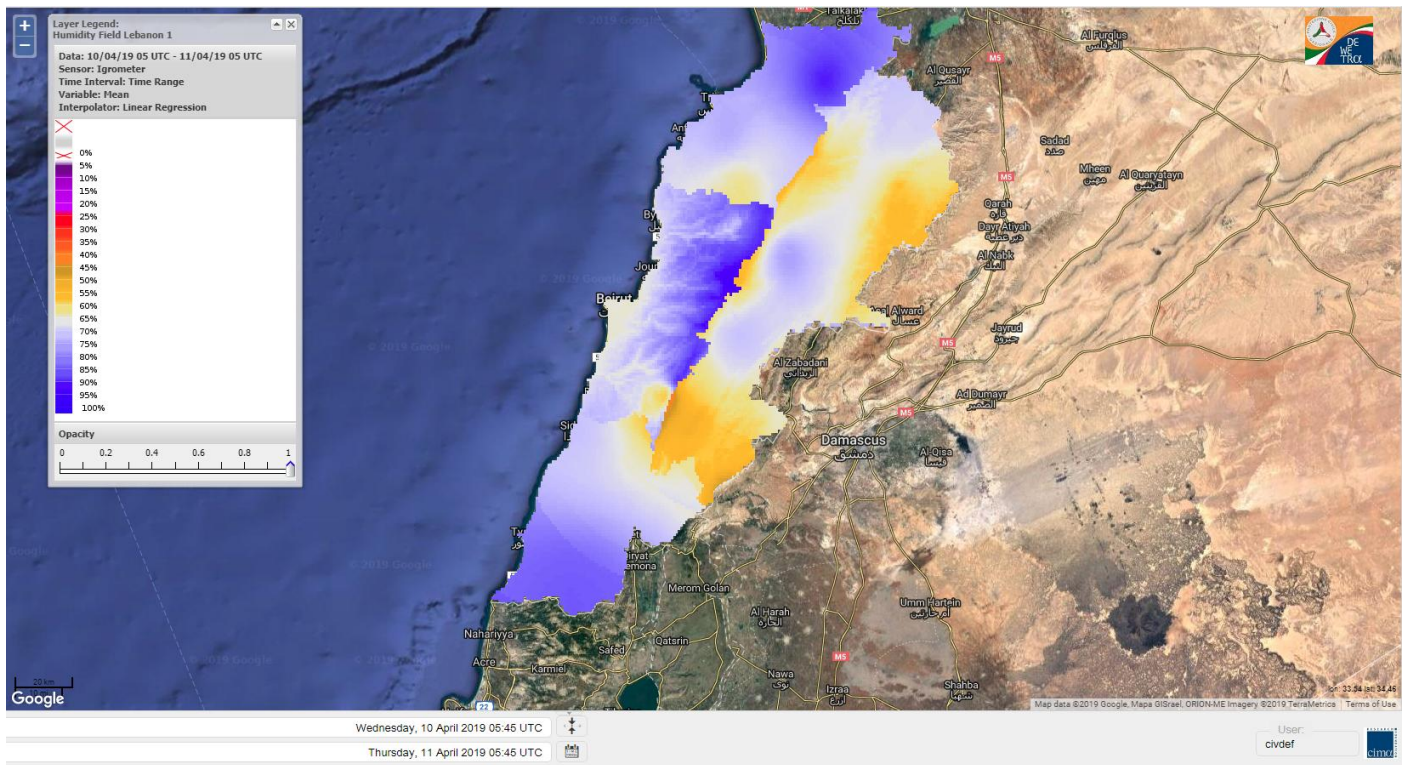
Data: Run: 11/04/2019 00:00. Forecast for 11
Model: RISICO for the Republic of Lebanon
Variable: Fire Weather Index
Spatial Resolution: Caza

- VERY LOW
- LOW
- MEDIUM-LOW
- MEDIUM
- MEDIUM-HIGH
- HIGH
- EXTREME

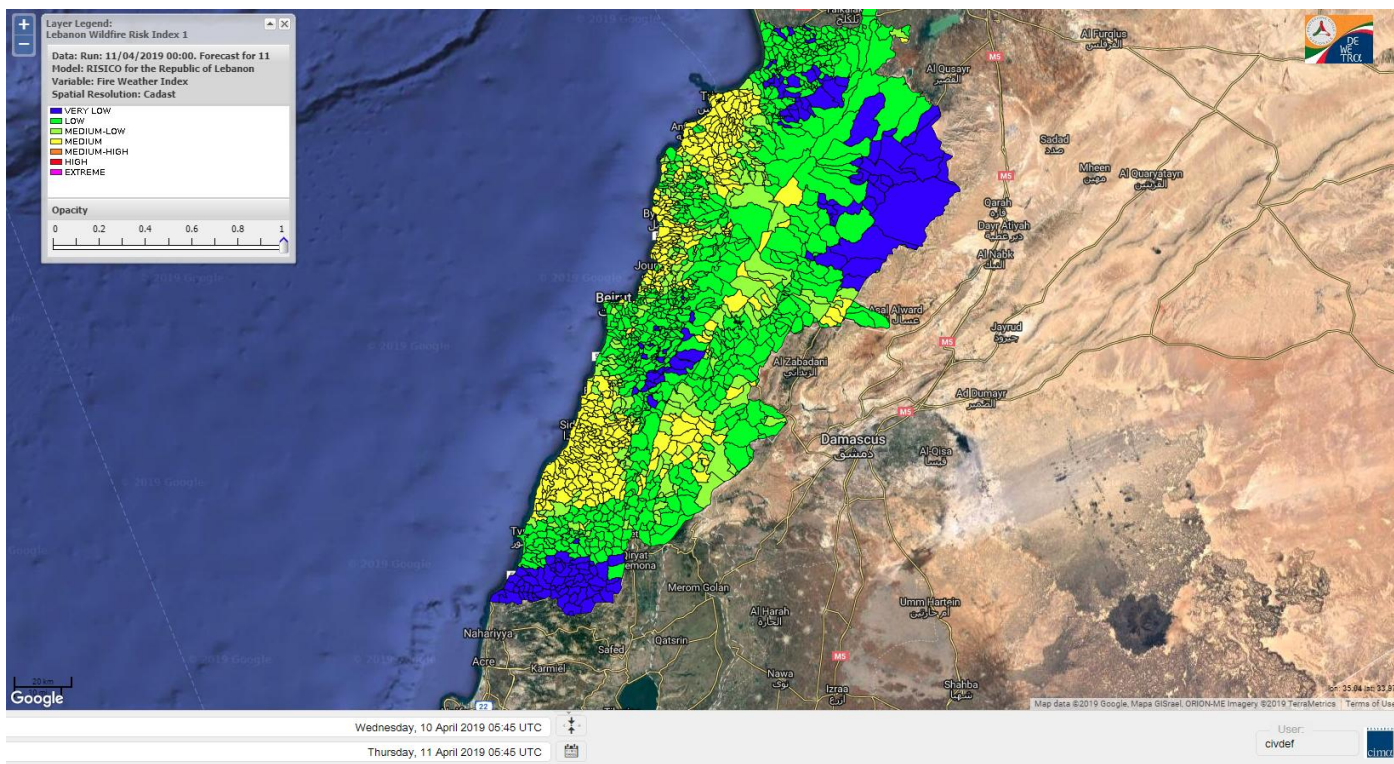
Lebanon temperature for Lebanon 11 April 2019



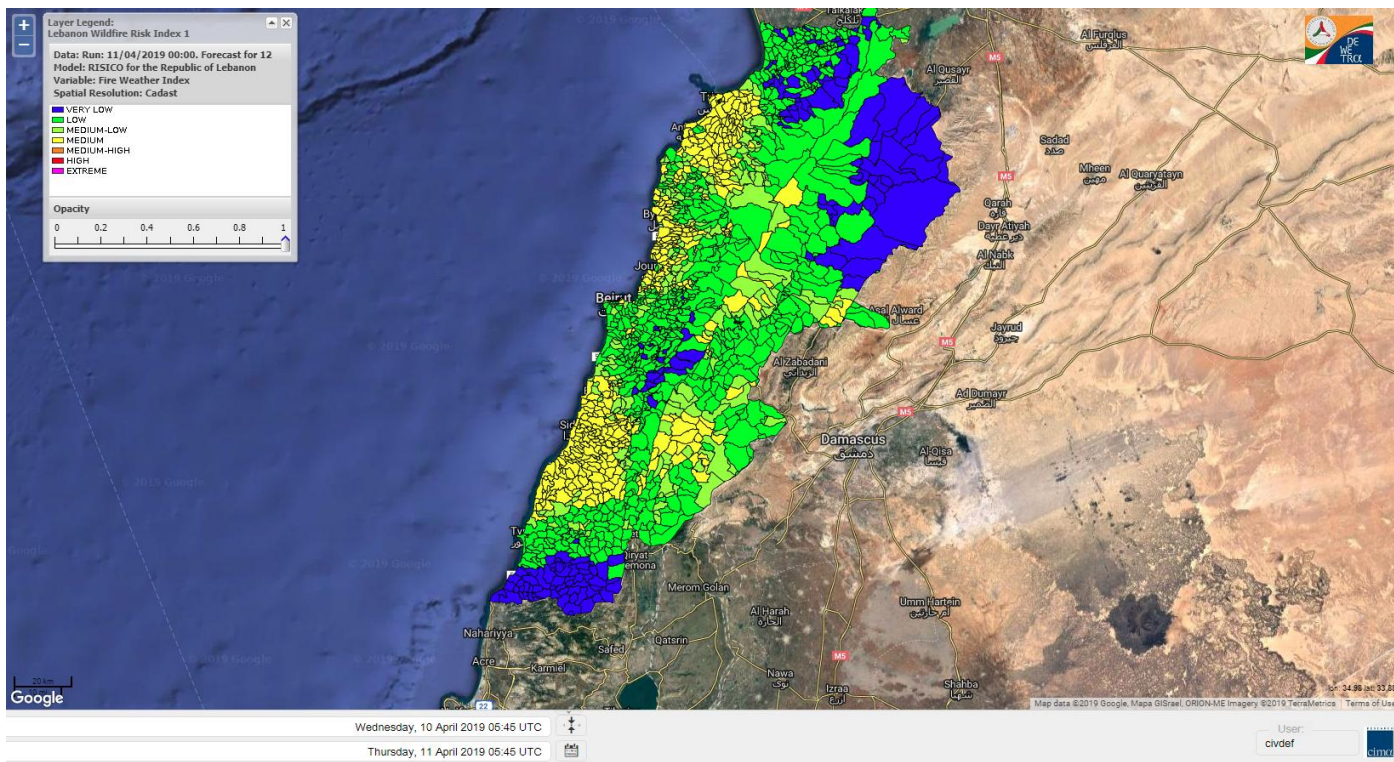
Lebanon humidity for Lebanon 11 April 2019



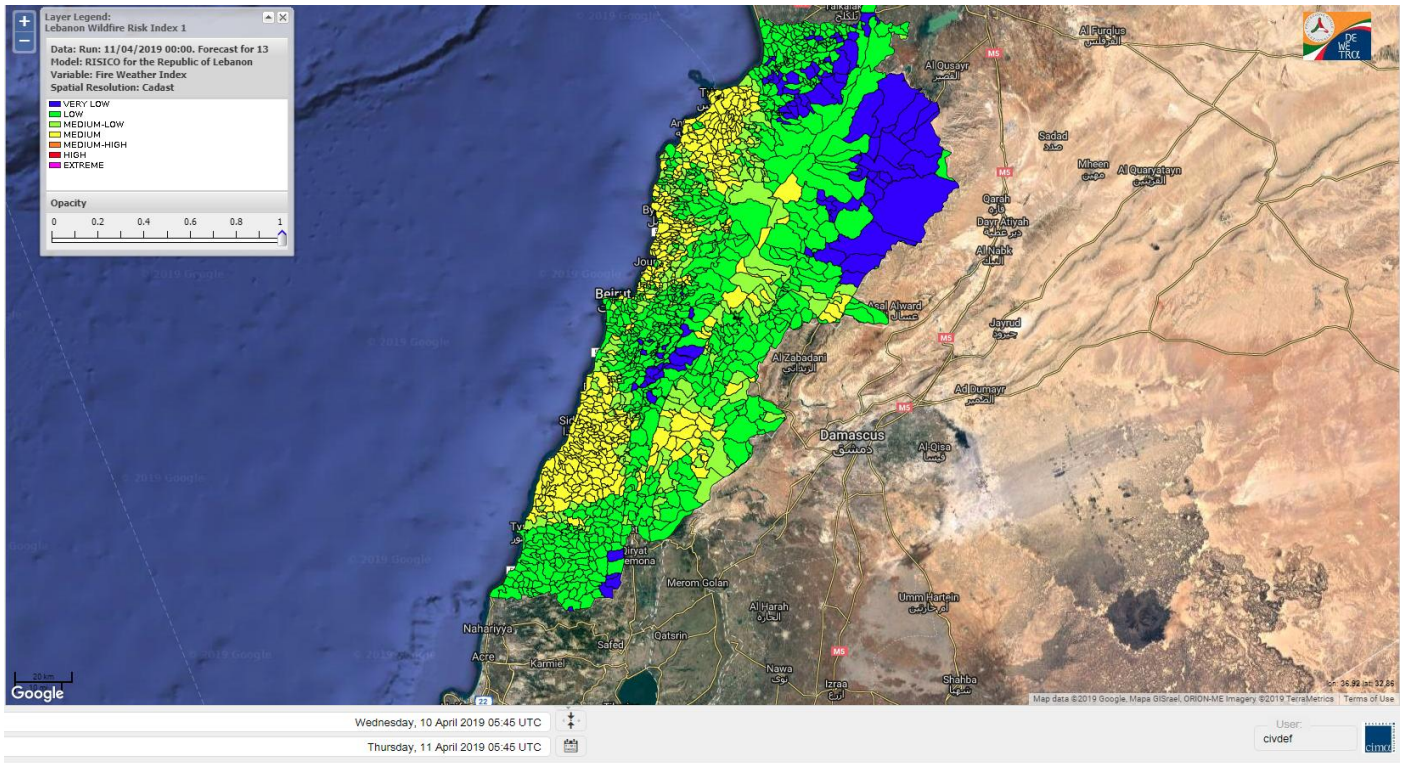
Lebanon for 11 April 2019



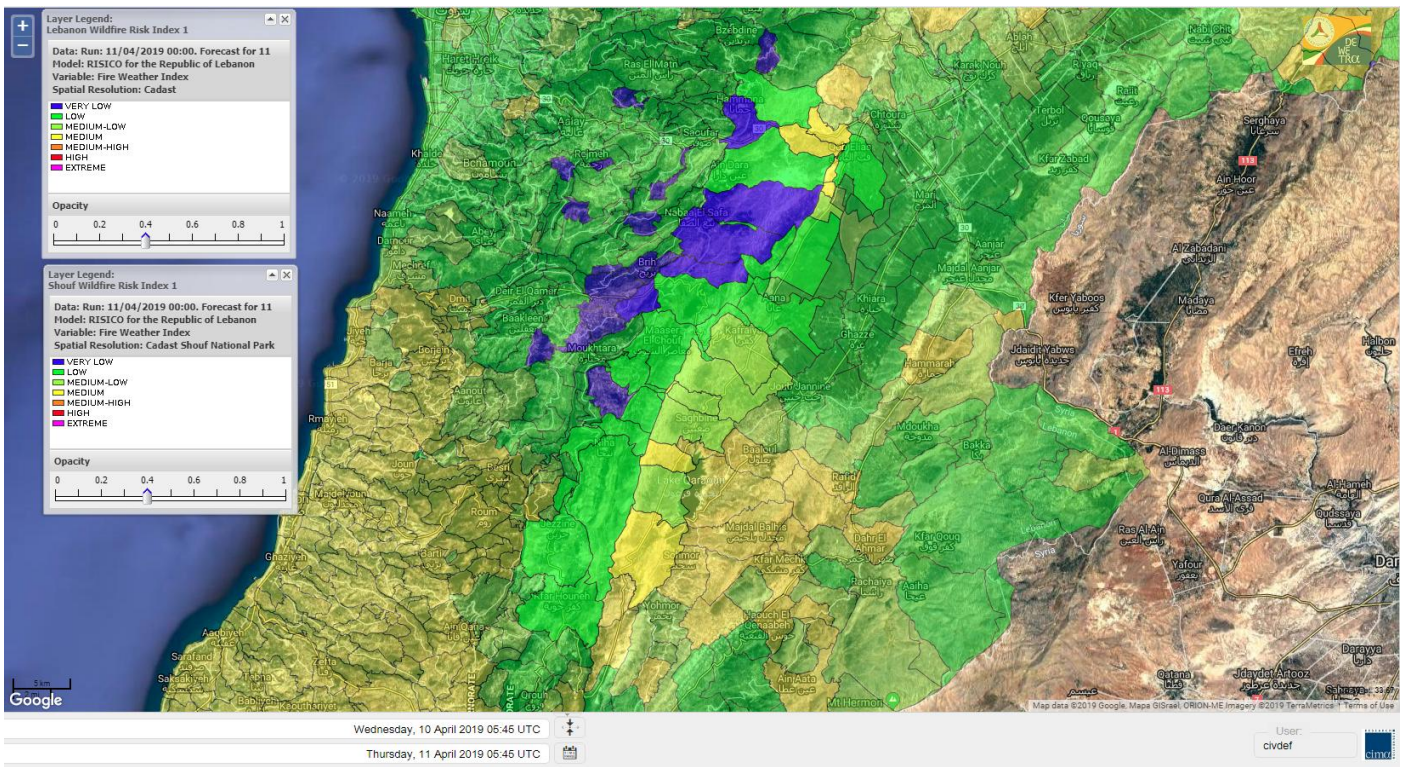
Lebanon for 12 April 2019



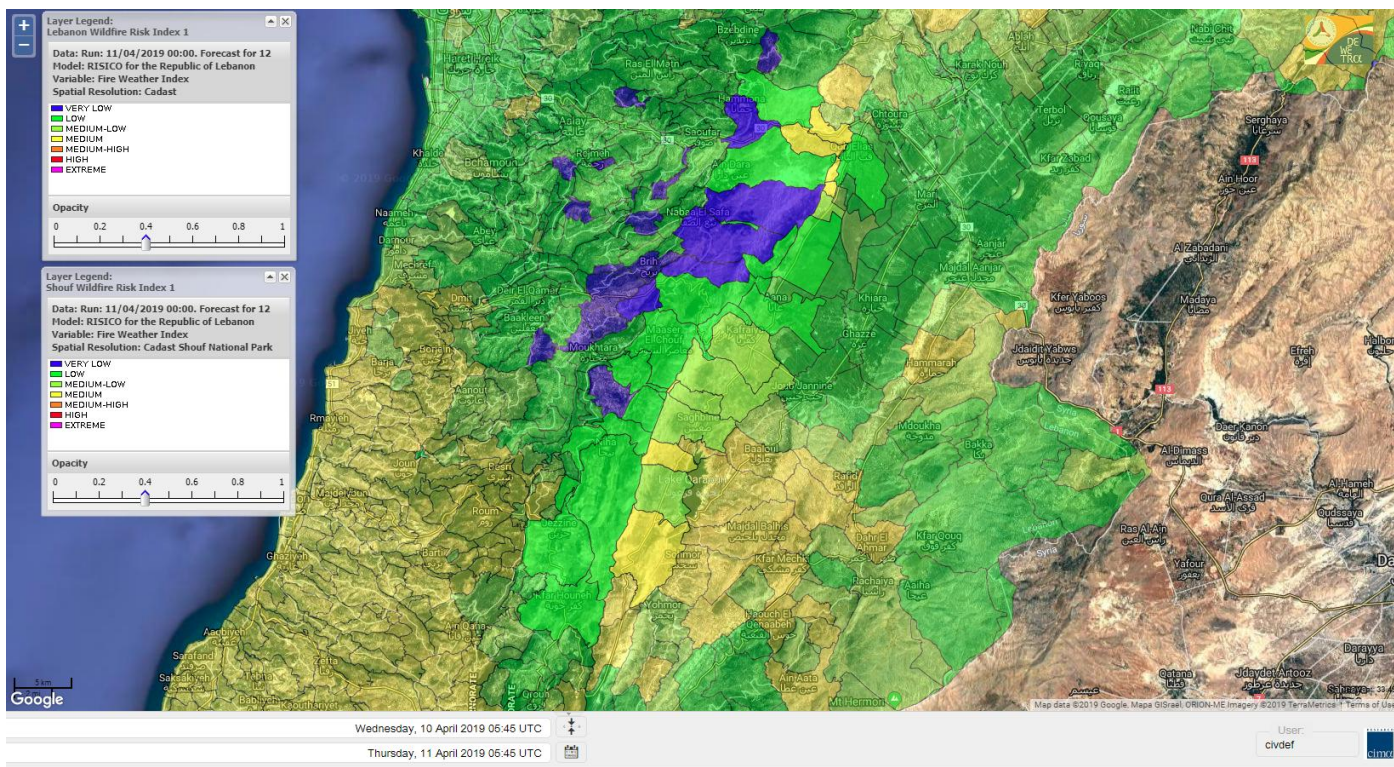
Lebanon for 13 April 2019



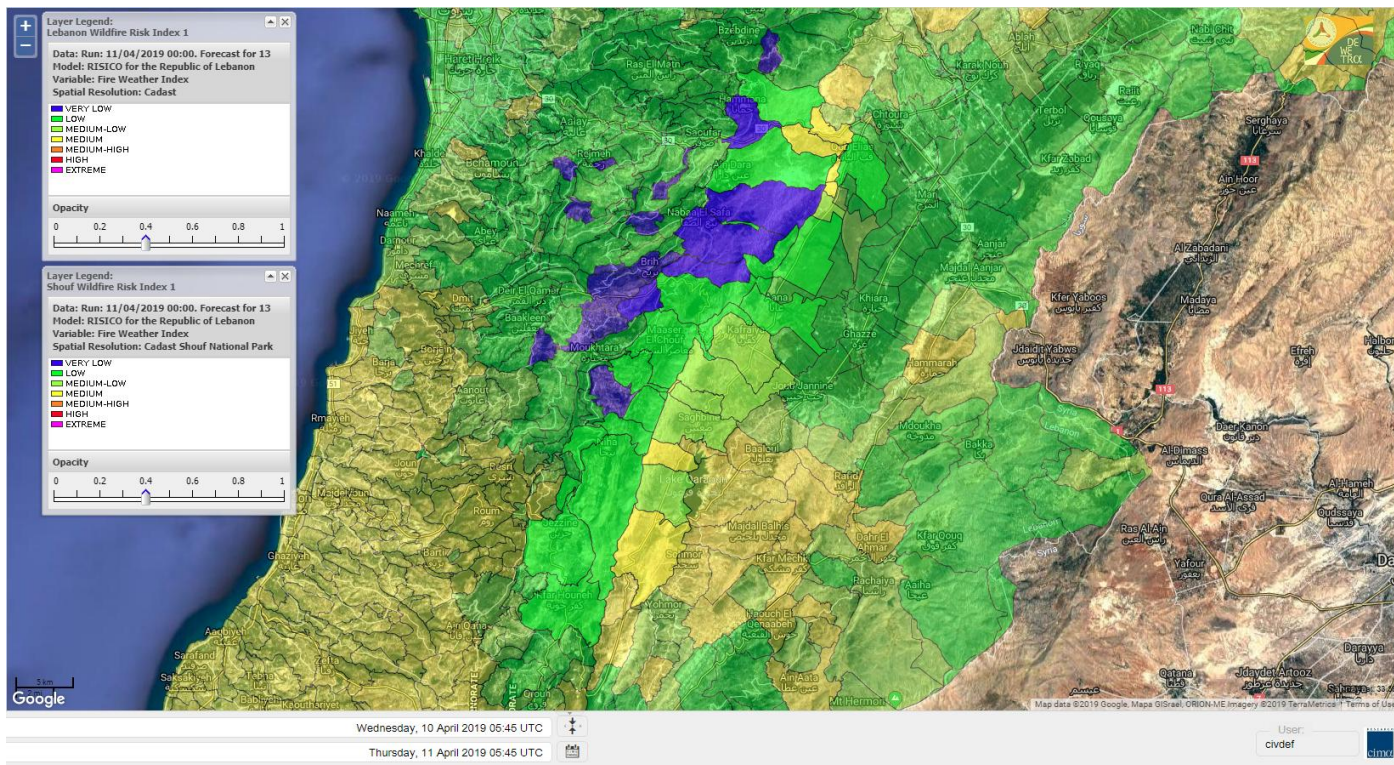
Shouf Biosphere Reserve Forecast for 11 April 2019



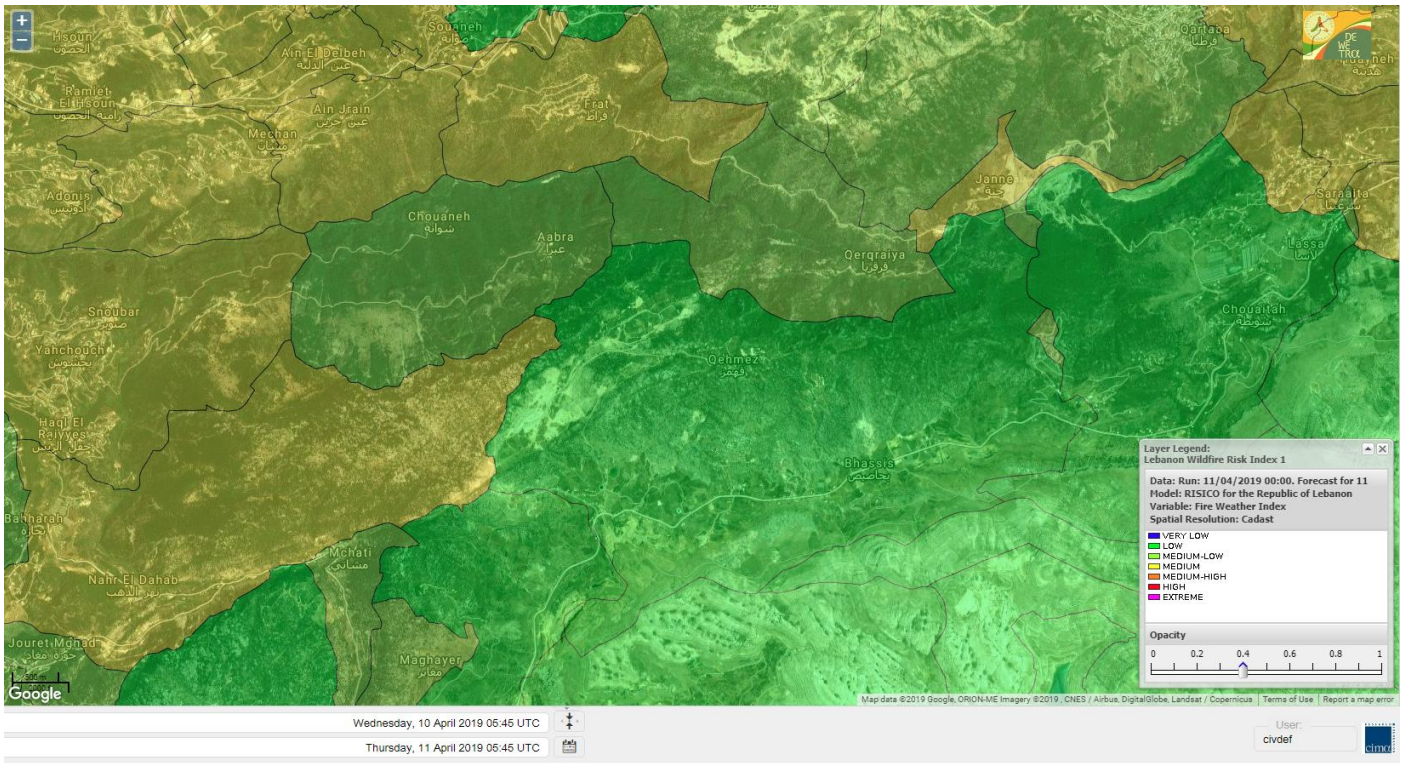
Shouf Biosphere Reserve Forecast for 12 April 2019



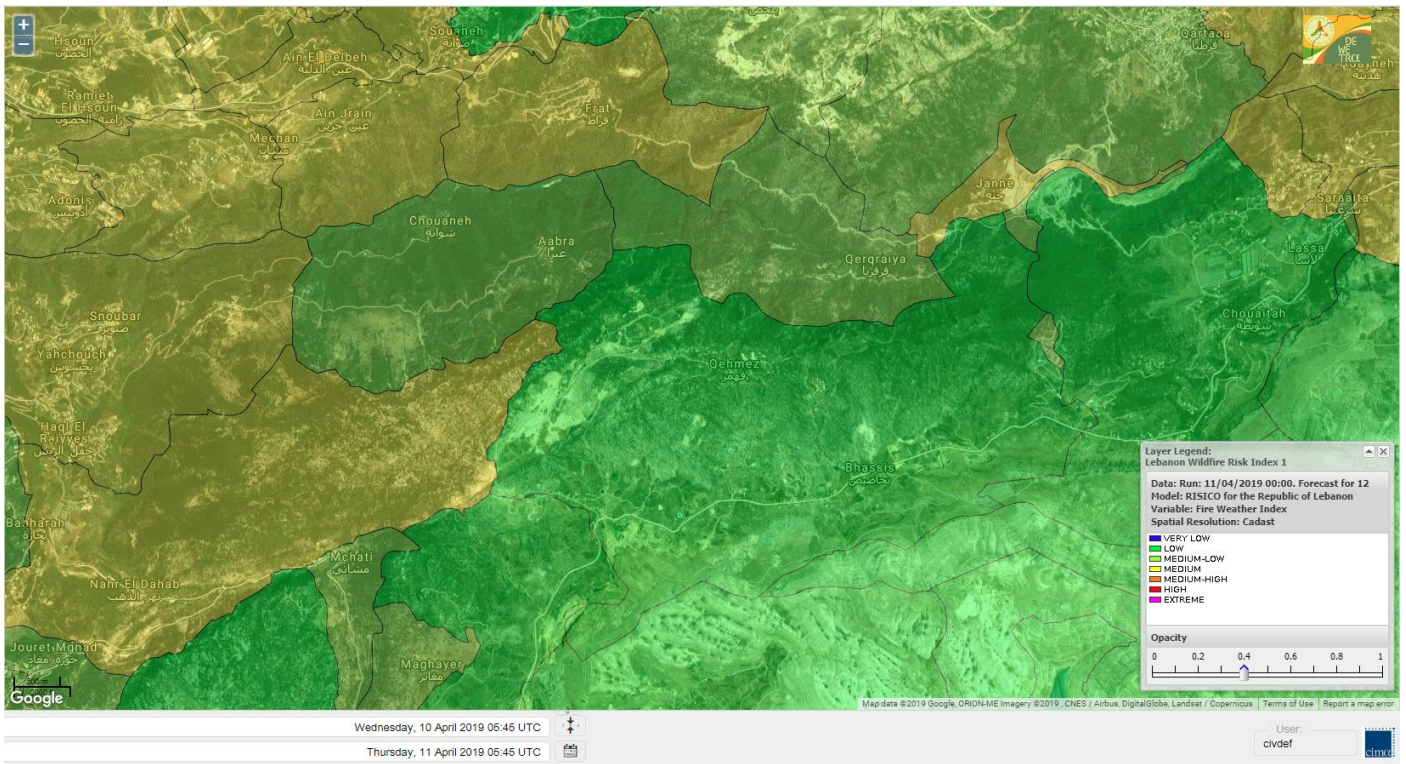
Shouf Biosphere Reserve Forecast for 13 April 2019



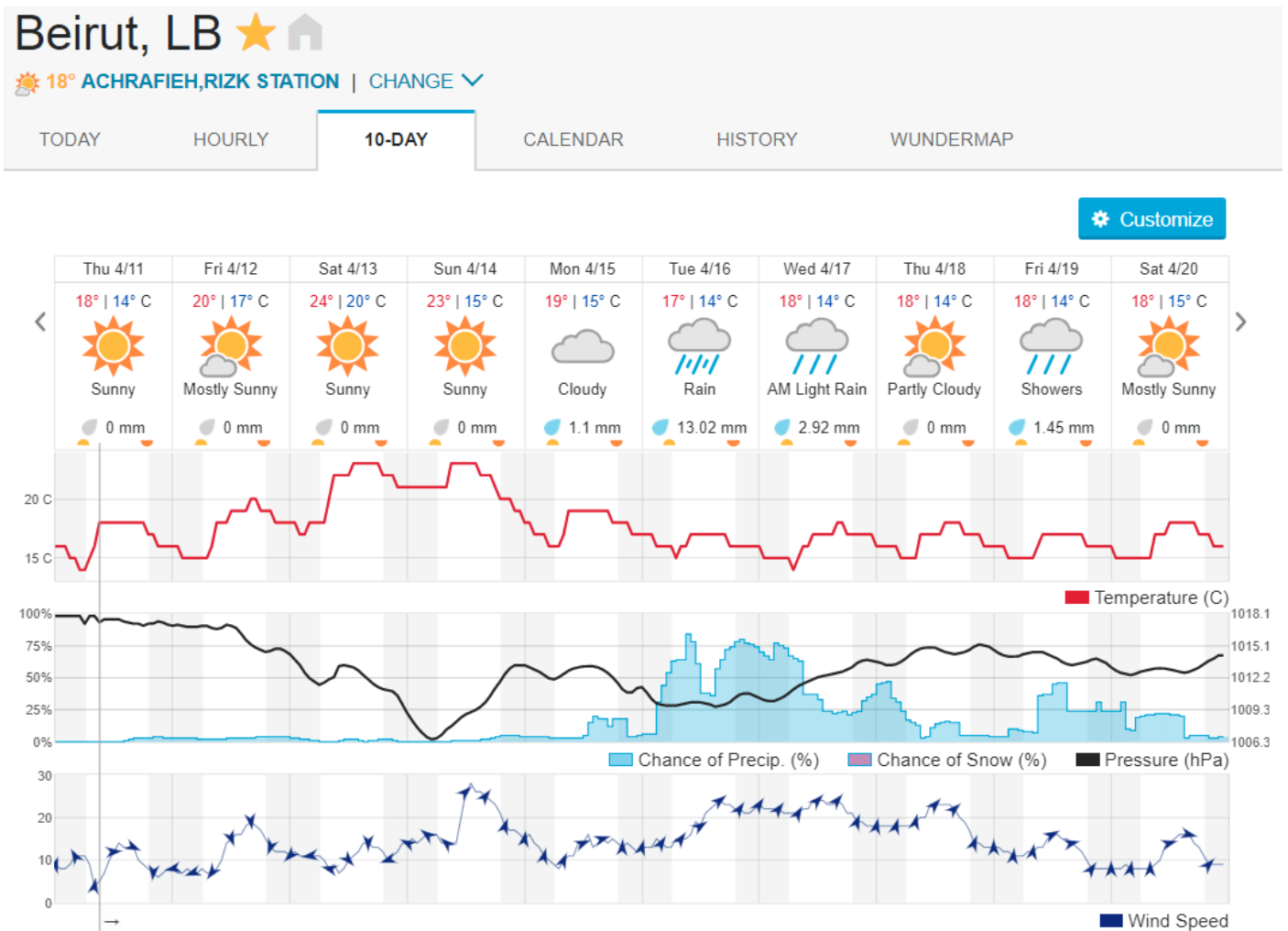
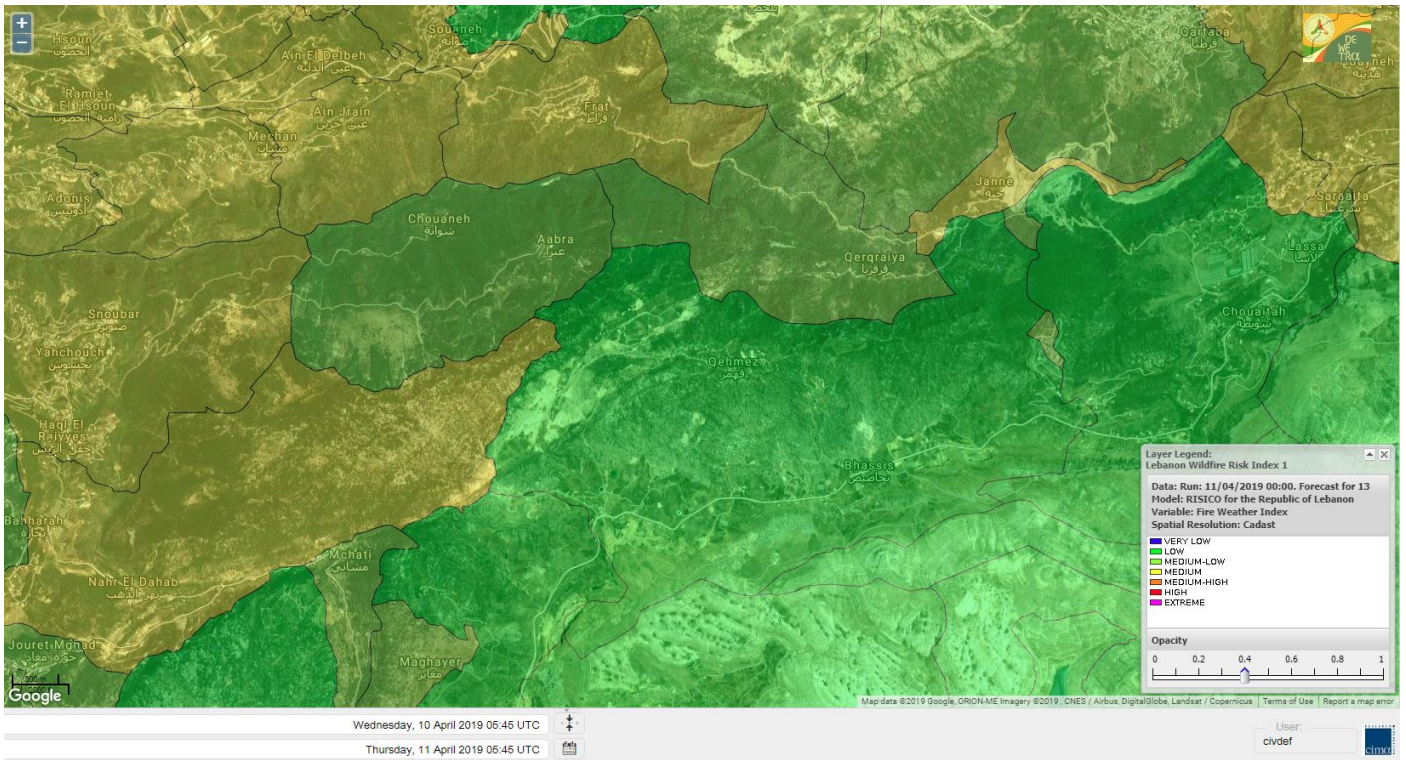
Jabal Moussa Reserve Forecast for 11 April 2019



Jabal Moussa Reserve Forecast for 12 April 2019



Jabal Moussa Reserve Forecast for 13 April 2019



Nord

Koura

Municipality	11-Apr	12-Apr	13-Apr	Municipality	11-Apr	12-Apr	13-Apr	Municipality	11-Apr	12-Apr	13-Apr
Aaba	M	M	M	Afsaddiq	M	M	M	Ain Ekrine	M	M	M
Amioun	M	M	M	Anfeh	M	M	M	Badbhoun	M	M	M
Barghoun	M	M	M	Barsa	M	M	M	Batroumine	M	M	M
Bdebba	M	M	M	Bechmizine	M	M	M	Bednayel El-Koura	ML	ML	ML
Bhabbouch El-Koura	M	M	M	Bkeftine	M	M	M	Bnehran	M	M	M
Bqaiaa El-Koura	M	M	M	Bsarma	M	M	M	Btaaboura	M	M	M
Bterram	M	M	M	Btouratij	M	M	M	Bziza	M	M	M
Dar Beehtar	M	M	M	Dar Chmezzine	M	M	M	Deddeh	M	M	M
Deir El-Balamand	L	L	L	Fih	M	M	M	Hraiche	M	M	M
Ijdaabrine	ML	ML	ML	Kaftoun	M	M	M	Kefraya El-Koura	M	M	M
Kfarakka	M	M	M	Kfarhata	ML	ML	ML	Kfarhazir	M	M	M
Kfarkahel	M	M	M	Kfarsaroun	M	M	M	Kosba	M	M	M
Mejdel el-Koura	ML	ML	ML	Nakhle	M	M	M	Qalhat	L	L	L
Ras Masqa	M	M	M	Rechdibbine	M	M	M	Zakroun	M	M	M
Zgharta El-Mtaouile	M	M	M								

Bcharre

Municipality	11-Apr	12-Apr	13-Apr	Municipality	11-Apr	12-Apr	13-Apr	Municipality	11-Apr	12-Apr	13-Apr
Aabdine	M	M	M	Bane	ML	ML	ML	Barhelioun	M	M	M
Bazouone	ML	ML	ML	Becharre	L	L	L	Beit Menzer	ML	ML	ML
Billa	ML	ML	ML	Blaouza	M	M	M	Bqaa Kafra	L	L	L
Bqerqacha	ML	ML	ML	Breissat	ML	ML	ML	Dimane	ML	ML	ML
Hadath El Jobbeh	ML	ML	ML	Hadchit	ML	ML	ML	Hasroun	ML	ML	ML
Mazraat Aassaf	M	M	M	Mazraat Bani Saab	M	M	M	Mchaa El-Jobbeh	L	L	L
Metrit	M	M	M	Moghr El-Ahoual	M	M	M	Ouadi Qannoubine	L	L	L
Qanat	ML	ML	ML	Qnayouer	L	L	L	Tourza	M	M	M

Batroun

Municipality	11-Apr	12-Apr	13-Apr	Municipality	11-Apr	12-Apr	13-Apr	Municipality	11-Apr	12-Apr	13-Apr
Aabrine	L	L	L	Aalali	ML	ML	ML	Aartiz	L	L	L
Abdelli	L	L	L	Ajdabra	L	L	L	Assia	L	L	L
Basbina	M	M	M	Batroun	M	M	M	Bcheleh	ML	ML	ML
Bechtoudar	ML	ML	ML	Beit Chlala	M	M	M	Beit Kassab	M	M	M
Bijdarfil	M	M	M	Bqesmaya	L	L	L	Chatine	ML	ML	ML
Chebthin	L	L	L	Chekka	M	M	M	Daael	M	M	M
Dahr Abi Yaghi	L	L	L	Daraya El-Batroun	M	M	M	Deir Billa	M	M	M
Deir Kfifane	ML	ML	ML	Deir Mar Youhanna EL	M	M	M	Deir Mar Youssef Jra	L	L	L
Douma	M	M	M	Douq	L	L	L	Eddeh El-Batroun	ML	ML	ML
Ftihat El-Batroun	L	L	L	Ghouma	ML	ML	ML	Hadtoun	ML	ML	ML
Hamat	L	L	L	Harbouna	L	L	L	Hardine	M	M	M
Helta	L	L	L	Hery	M	M	M	Jebila	L	L	L
Jrabta El-Batroun	ML	ML	ML	Jrane El-Batroun	M	M	M	Kfar Aabida	ML	ML	ML
Kfar Halda	M	M	M	Kfarb Shlaimane	L	L	L	Kfarhatna	L	L	L
Kfarhay	M	M	M	Kfarhelos	L	L	L	Kfifane	M	M	M

Kfour El Arabi	M	M	M	Koubba	ML	ML	ML	Kour	ML	ML	ML
Mar Mama	L	L	L	Masrah	L	L	L	Mehmarch	ML	ML	ML
Mrah Chdid	L	L	L	Mrah El Ziyat	ML	ML	ML	Mrah El-Hajj	L	L	L
Nahle El-Batroun	ML	ML	ML	Niha El-Batroun	ML	ML	ML	Oujah El-Hajjar	ML	ML	ML
Ouata Houb	ML	ML	ML	Qatnaaoun	ML	ML	ML	Racha	ML	ML	ML
Rachana	L	L	L	Rachkida	ML	ML	ML	Ram El-Batroun	M	M	M
Ras Nahhach	L	L	L	Selaata	ML	ML	ML	Sghar	ML	ML	ML
Smar Jbayl	ML	ML	ML	Sourat El-Batroun	L	L	L	Tannourine El-Faouqa	ML	ML	ML
Tannourine Et-Tahta	M	M	M	Thoum	L	L	L	Toula El-Batroun	L	L	L
Zan	ML	ML	ML								

Zgharta

Municipality	11-Apr	12-Apr	13-Apr	Municipality	11-Apr	12-Apr	13-Apr	Municipality	11-Apr	12-Apr	13-Apr
Aachach	M	M	M	Aalma	M	M	M	Aarde	M	M	M
Aintourine	M	M	M	Arabet Qozhaya	ML	ML	ML	Arde	M	M	M
Arjis	M	M	M	Asnoun	M	M	M	Ayto	ML	ML	ML
Basloukit	ML	ML	ML	Bchannine	M	M	M	Besebeel	M	M	M
Bhairat Toula	ML	ML	ML	Bnachee	M	M	M	Boussit	M	M	M
Danha	M	M	M	Daraiya Zgharta	M	M	M	Deir Jdeide	M	M	M
Ehden	L	L	L	Halan	M	M	M	Hariq Zgharta	M	M	M
Houakir	M	M	M	Hraiqis	M	M	M	Iaal	M	M	M
Ijbaa	ML	ML	ML	Karm Saddeh	ML	ML	ML	Kfarchakhna	M	M	M
Kfardlaqous	M	M	M	Kfarfou	M	M	M	Kfarhata Zgharta	M	M	M
Kfarhoura	M	M	M	Kfarsghab	ML	ML	ML	Kfaryachit	M	M	M
Kfarzaina	M	M	M	Khaldiye	M	M	M	Mazraat Ajbeaa	M	M	M
Mazraat Et-Teffah	M	M	M	Mazraat Jneid	M	M	M	Mejdlaiya Zgharta	M	M	M
Merh Kfarsghab	M	M	M	Miryata	M	M	M	Miziara	ML	ML	ML
Mzraat Kefraya	M	M	M	Qorah Bach	M	M	M	Rachiine	M	M	M
Ras Kifa	M	M	M	Sakhra	M	M	M	Sebhel Zgharta	M	M	M
Serhel	L	L	L	Tallet Zgharta	M	M	M	Toula Zgharta	ML	ML	ML
Zgharta	M	M	M								

Minieh-Denniye

Municipality	11-Apr	12-Apr	13-Apr	Municipality	11-Apr	12-Apr	13-Apr	Municipality	11-Apr	12-Apr	13-Apr
Aasaymout	VL	VL	VL	Aaymar	ML	ML	ML	Aazki	L	L	L
Ain El-Tineh-Miniyeh	VL	VL	VL	Assoun	L	L	L	Bakhaaoun	L	L	L
Bchennata	L	L	L	Bechehhara	ML	ML	ML	Beddawi	M	M	M
Behouaita	L	L	L	Beit El Foqss	VL	VL	VL	Beit Haouik	VL	VL	VL
Beit Zoud	L	L	L	Bekaasafrine	L	L	L	Borj El Yahoudiyeh	M	M	M
Bqarsouna	VL	VL	VL	Btermaz	VL	VL	VL	Debaael	VL	VL	VL
Deir Ammar	M	M	M	Deir Nbouh	ML	ML	ML	Haouaret-Miniyeh	VL	VL	VL
Haql el Azimeh	L	L	L	Harf El Siyad	VL	VL	VL	Hazmiye-Miniyeh	VL	VL	VL
Izal	ML	ML	ML	Jarjour	L	L	L	Jayroun	VL	VL	VL
Kahf El-Malloul	L	L	L	Karm El-Moher	L	L	L	Kfar Binine	VL	VL	VL
Kfarchalane	ML	ML	ML	Kfarhabou	M	M	M	Kharroub-Miniyeh	ML	ML	ML
Mazraat El-Kreme	L	L	L	Mazraat Ketrane	L	L	L	Merkebta	ML	ML	ML
Minyeh	ML	ML	ML	Mrah El Sfirat	VL	VL	VL	Mrah Sraj	L	L	L
Mrebbine	L	L	L	Nabi Youcheaa	M	M	M	Nemrine	L	L	L

Qarhaiya	VL	VL	VL	Qarne	VL	VL	VL	Qarsita	VL	VL	VL
Qattineh-Miniyeh	VL	VL	VL	Qemmamine	VL	VL	VL	Qraine	VL	VL	VL
Raouda-Aadoua	L	L	L	Rihaniyet-Miniyeh	VL	VL	VL	Sfireh	VL	VL	VL
Sir Ed-Danniyeh	L	L	L	Tarane	VL	VL	VL	Terbol-Miniyeh	M	M	M
Zaghartaghriine	ML	ML	ML	Zouq Bhannine	VL	VL	VL				

Nabatiye

Nabatiye

Municipality	11-Apr	12-Apr	13-Apr	Municipality	11-Apr	12-Apr	13-Apr	Municipality	11-Apr	12-Apr	13-Apr
Aabba	M	M	M	Aazzi	M	M	M	Adchit El-Chqif	L	L	ML
Ain Bou Swar	M	M	M	Ain Kana	M	M	M	Ali El-TaHER	L	L	L
Ansar	M	M	M	Arab Salim	M	M	M	Arnoun	L	L	L
Bfaroue	M	M	M	Breyqaah	L	L	ML	Charqiyeh	M	M	M
Choukine	L	L	L	Deir El Zahrani	M	M	M	Doueir El-Nabatiyeh	M	M	M
Habbouch El-Nabatiye	M	M	M	Hamra El-Nabatiyeh	L	L	L	Harouf El-Nabatiyeh	M	M	M
Hmaile	M	M	M	Houmin El Faouqa	M	M	M	Houmin El Tahta	M	M	M
Jarjough	M	M	M	Jbaah El-Nabatiyeh	ML	ML	ML	Jebchit	M	M	M
Kfar Djal El-Nabatiy	L	L	L	Kfar Remmane	M	M	M	Kfar Sir	L	L	L
Kfar Tebnit	L	L	L	Kfarfila	M	M	M	Kfour El-Nabatieh	M	M	M
Mayfadoun	L	L	L	Mazraat Bsaffour	M	M	M	Mazraat Chalbaal	ML	ML	M
Mazraat Dmoul	ML	ML	M	Mazraat El Khreibeh	M	M	M	Mazraat El-Bayad El-	M	M	M
Mazraat Kfarjaouz	M	M	M	Mazraat Qalaat Meiss	ML	ML	M	Nabatiyeh El-Fawka	L	L	L
Nabatiyeh Et-Tahta	M	M	M	Namiriyeh	M	M	M	Qaaqaaiyet El Jisr	L	L	L
Qossabeh El-Nabatiy	L	L	L	Roumine	M	M	M	Sarba El-Nabatieh	M	M	M
Sir El-Gharbiyeh	L	L	L	Toul	M	M	M	Yehmor El-Nabatiyeh	L	L	L
Zaoutar El Charqiyeh	L	L	L	Zaoutar El-Gharbiyeh	L	L	L	Zebdine El-Nabatiyeh	M	M	M
Zefta	M	M	M								

Hasbaiya

Municipality	11-Apr	12-Apr	13-Apr	Municipality	11-Apr	12-Apr	13-Apr	Municipality	11-Apr	12-Apr	13-Apr
Aain Jarfa	ML	ML	ML	Abou Qamha	ML	ML	ML	Ain Qania	ML	ML	ML
Bourghos	L	L	L	Chebaa	L	L	L	Chouaya Hasbaya	L	L	L
Dellafeh	L	L	L	Fardiss Hasbaiya	L	L	L	Hasbaya	ML	ML	ML
Hbariyeh	L	L	L	Kaoukaba Hasbaiya	L	L	L	Kfar Chouba	L	L	L
Kfar Hamam	L	L	L	Kfeir El-Zait	L	L	L	Khalwat Hasbaya	L	L	L
Khreibet Hasbaiya	ML	ML	ML	Majidiyeh Hasbaiya	L	L	L	Marj Ez-Zhour (Haouc	L	L	L
Meri	ML	ML	ML	Mimass	L	L	L	Rachaiya El-Fokhar	ML	ML	ML
Salaiyeb	L	L	L								

Marjayoun

Municipality	11-Apr	12-Apr	13-Apr	Municipality	11-Apr	12-Apr	13-Apr	Municipality	11-Apr	12-Apr	13-Apr
Aalmane Marjaayoun	L	L	L	Aamra	L	L	L	Adayseh Marjaayoun	L	L	L
Adchit El-Koussair	L	L	L	Ain Aarab Marjaayoun	L	L	L	Bani Haiyann	VL	VL	VL
Blatt Marjaayoun	L	L	L	Blida	VL	VL	VL	Borj El-Moulouk	L	L	L
Boueyda Marjaayoun	L	L	L	Deir Mimass	ML	ML	ML	Deir Siriane	L	L	L
Dibbine	L	L	L	Ebel El Saqi	L	L	L	Houla	VL	VL	VL
Houra	ML	ML	ML	Kfar Kila	L	L	L	Khiam Marjaayoun	L	L	L

Klayaa	L	L	L	Majdel Selem	VL	VL	L	Marjaayoun	L	L	L
Markaba	VL	VL	VL	Mays El-Jabal	VL	VL	VL	Mazraat Doumiat	L	L	L
Mazraat Sarada	L	L	L	Mhaibib	VL	VL	VL	Qabrikha	L	L	L
Qantara	L	L	L	Rab El-Thalathine	L	L	L	Saouaneh Marjayoun	VL	VL	L
Talloussa	VL	VL	VL	Taybeh Matjaayoun	L	L	L	Touline	L	L	L

Bent Jbail

Municipality	11-Apr	12-Apr	13-Apr	Municipality	11-Apr	12-Apr	13-Apr	Municipality	11-Apr	12-Apr	13-Apr
Ain-Ebel	VL	VL	L	Aitaroun	VL	VL	VL	Aynata Bint Jbeil	VL	VL	L
Ayta El-Chaeb	VL	VL	L	Ayta El-Jabal	VL	VL	L	Beit Lif	VL	VL	L
Beit Yahoun	VL	VL	L	Bint Jbeil	VL	VL	L	Borj Qalaway	L	L	L
Braachit	VL	VL	L	Chakra	VL	VL	L	Debel	VL	VL	L
Deir Antar	VL	VL	L	Froun	L	L	L	Ghandouriyeh Bint Jb	L	L	L
Hanine	VL	VL	L	Hariss	VL	VL	L	Hdatha	VL	VL	L
Jmeymeh	VL	VL	L	Kafra Bint Jbeil	VL	VL	L	Kfar Dounine	VL	VL	L
Khirbet Selm	VL	VL	L	Kounine	VL	VL	L	Maroun El Ras	VL	VL	L
Qalaway	L	L	L	Qaouzah	VL	VL	L	Qatmoun	VL	VL	VL
Ramya Bint Jbeil	VL	VL	L	Rchaf	VL	VL	L	Rmeich	VL	VL	L
Safad Al Battikh	VL	VL	L	Salhaneh	VL	VL	L	Serbine	VL	VL	L
Sultanieh Bint Jbeil	VL	VL	L	Tibnine	VL	VL	L	Tiri	VL	VL	L
Yaroun	VL	VL	L	Yater	VL	VL	L				

Mont Liban

Jbail

Municipality	11-Apr	12-Apr	13-Apr	Municipality	11-Apr	12-Apr	13-Apr	Municipality	11-Apr	12-Apr	13-Apr
Aabeydat	L	L	L	Aalita	M	M	M	Aamchit	M	M	M
Aarab El-Lahib	L	L	L	Aarasta	L	L	L	Adonis Jbeil	M	M	M
Afqa Jbeil	L	L	L	Ain El Delbeh Jbeil	M	M	M	Ain El-Ghouayba	M	M	M
Ain Jrain	M	M	M	Ain Kfah	ML	ML	ML	Almat El Chemaliyat	ML	ML	ML
Almat El-Jenoubiya	L	L	L	Aqoura	L	L	L	Bayzoun	M	M	M
Bchille Jbeil	M	M	M	Bechtlida	L	L	L	Behdaydat	ML	ML	ML
Beit Habbaq	ML	ML	ML	Bejjeh	ML	ML	ML	Bekhaaz	ML	ML	ML
Berbara Jbeil	M	M	M	Bintael	ML	ML	ML	Birket Hjoula	L	L	L
Blatt Jbeil	M	M	M	Boulhos	ML	ML	ML	Breyj Jbeil	L	L	L
Chamat	M	M	M	Chikhane	M	M	M	Chmout	L	L	L
Eddeh Jbeil	M	M	M	Ehmej	L	L	L	Fatre	M	M	M
Ferhet	M	M	M	Fghal	L	L	L	Frat	M	M	M
Ghabat	M	M	M	Ghalboun	ML	ML	ML	Gharzouz	M	M	M
Ghofrine	M	M	M	Habil	VL	VL	L	Halate	M	M	M
Haqel	L	L	L	Hbaline	M	M	M	Hboub	M	M	M
Hdeine	M	M	M	Hema Er-Rehban	VL	VL	VL	Hema Mar Maroun Aann	VL	VL	VL
Hjoula	L	L	L	Hosrayel	M	M	M	Hsarat	M	M	M
Hsoun	M	M	M	Jaj	L	L	L	Janne	M	M	M
Jbeil	M	M	M	Jeddeyl Jbeil	M	M	M	Jlisse	M	M	M
Jouret El-Qattine	M	M	M	Kfar Baal Annaya	ML	ML	ML	Kfar Kidde	ML	ML	ML
Kfar Kouas	L	L	L	Kfar Mashoun	M	M	M	Kfoun	L	L	L

Kharbe Jbeil	ML	ML	ML	Laqlouq	L	L	L	Lassa	L	L	L
Lehfed	L	L	L	Maad	ML	ML	ML	Mar Sarkis	M	M	M
Mastita	ML	ML	ML	Mayfouq	L	L	L	Mazraat El Siyad	L	L	L
Mazraat El-Maaden	L	L	L	Mechane	M	M	M	Mechmech Jbeil	L	L	L
Mehrin	M	M	M	Mejdel El-Akoura	L	L	L	Mghayreh Jbeil	M	M	M
Mounsef	M	M	M	Nahr Ibrahim	M	M	M	Qahmez	L	L	L
Qartaba	ML	ML	ML	Qartaboun	ML	ML	ML	Qattara Jbeil	M	M	M
Qorqraya	ML	ML	ML	Ramout	ML	ML	ML	Ras Osta	L	L	L
Rihane Jbeil	L	L	L	Sakiet El-Khayt	L	L	ML	Saqi Richmaya	L	L	L
Sebrine	M	M	M	Seraita	M	M	M	Souane Jbeil	M	M	M
Tadmor	ML	ML	ML	Tartej	L	L	L	Torzaiya	M	M	M
Yanouh Jbeil	M	M	M	Zibdine Jbeil	M	M	M				

El Metn

Municipality	11-Apr	12-Apr	13-Apr	Municipality	11-Apr	12-Apr	13-Apr	Municipality	11-Apr	12-Apr	13-Apr
Aain El-Qabu	L	L	L	Aain El-Qach	VL	VL	VL	Aain El-Teffaha	L	L	L
Aain el-Safssaf El-M	VL	VL	VL	Abou Mizane	ML	ML	ML	Ain Aar	L	L	L
Ain Alaq	ML	ML	ML	Ain El-Kharroube	L	L	L	Ain El-Sendianeh	VL	VL	VL
Ain El-Zeitoune	VL	VL	VL	Ain Saadeh	ML	ML	ML	Aintoura El-Matn	VL	VL	VL
Amaret Chalhoub	M	M	M	Antelias	L	L	ML	Atchaneh	L	L	L
Ayroun	VL	VL	VL	Baabdat	L	L	L	Baouchariyeh	L	L	L
Baskinta	VL	VL	VL	Beit Chabab	ML	ML	ML	Beit El-Chaar	L	L	L
Beit El-Kekko	L	L	L	Beit Mery	L	L	L	Bhersaf	L	L	L
Bikfaya	L	L	L	Biyakout	L	L	L	Bnabil	VL	VL	VL
Bourj Hammoud	ML	ML	ML	Bqennaya	L	L	ML	Broummana El-Matn	L	L	L
Bsalim	ML	ML	ML	Bsifrine	ML	ML	ML	Bteghrine	L	L	L
Chaouiye	ML	ML	ML	Chouaya El-Matn	L	L	L	Choueir	VL	VL	VL
Chrine	ML	ML	ML	Dahr El Sawan El-Mat	VL	VL	L	Daychouniyeh	L	L	L
Dbayeh	M	M	M	Deir Chamra	M	M	M	Deir Mar Abda el Mch	M	M	M
Deir Mar Roukouz	L	L	L	Deir Tamiche	M	M	M	Dik El-Mehdi	ML	ML	ML
Dikwaneh	L	L	L	Douar El-Matn	L	L	L	Fanar	L	L	L
Fraike	M	M	M	Haret El-Ballaneh	M	M	M	Hbous	L	L	L
Himlaya	ML	ML	ML	Jal El Did	L	L	L	Jdeideh El-Metn	L	L	L
Jouar El-Matn	L	L	L	Jouret El-Ballout	L	L	ML	Kaaqour	L	L	L
Kfar Aaqab	M	M	M	Kfertay El-Matn	L	L	L	Khenchara	L	L	L
Khillat El-Mtain	VL	VL	VL	Konnabat Broummana	L	L	L	Konnabat Salima	ML	ML	ML
Machraah El-Matn	L	L	L	Majdel Tarchich	L	L	L	Majzoub	L	L	L
Mansouriyeh El-Metn	L	L	L	Mar Boutros Karm Et-	ML	ML	ML	Mar Chaya et Mzekke	L	L	L
Mar Moussa Ed-Douar	VL	VL	VL	Marjaba	L	L	L	Masqa	VL	VL	L
Mayasse	M	M	M	Mazraat Deir Aoukar	M	M	M	Mazraat El-Hadirat	M	M	M
Mazraat Yachouh	L	L	L	Mchikha	VL	VL	VL	Menqlet Mezher	L	L	L
Mhaydseh Matn	VL	VL	VL	Mkalles	L	L	L	Mrouj	L	L	L
Mtain	L	L	L	Mtayleb	L	L	ML	Nabay	ML	ML	M
Naccache	ML	ML	M	Ouadi Chahine	L	L	L	Ouadi El-Karm El-Mat	M	M	M
Ouata El-Mrouj	VL	VL	VL	Ouyoun El-Matn	VL	VL	L	Qornet Chehwan	L	L	ML
Qornet El-Hamra	M	M	M	Roumieh	ML	ML	ML	Sfeilet Bikfaya	M	M	M
Sinn El-Fil	L	L	L	Zabbougha	M	M	M	Zalqa	L	L	ML

Zaroun	L	L	L	Zekrite	M	M	M	Zighrine El-Matn	VL	VL	VL
Zouk El-Khrab	ML	ML	ML								

Chouf

Municipality	11-Apr	12-Apr	13-Apr	Municipality	11-Apr	12-Apr	13-Apr	Municipality	11-Apr	12-Apr	13-Apr
Aalmane El-Chouf	M	M	M	Aammiq El-Chouf	L	L	L	Ain Ouzein	VL	VL	VL
Ain Qani	VL	VL	VL	Ain Zhalta	VL	VL	VL	Ainbal	L	L	L
Amatour	L	L	L	Anout	ML	ML	ML	Atrine	VL	VL	VL
Baadarane	VL	VL	VL	Baaqline	L	L	L	Baasir	ML	ML	ML
Barja	M	M	M	Barouk	L	L	L	Bater	L	L	L
Batloun	VL	VL	VL	Bayqoun	L	L	L	Bchetfine	L	L	L
Beiteddine	VL	VL	VL	Benouati Ech-Chouf	M	M	M	Berjein	M	M	M
Bireh et Mtalleh	VL	VL	VL	Biret El-Chouf	VL	VL	VL	Bkechtine Ouel Mchei	M	M	M
Bkifa El-Chouf	ML	ML	ML	Botme	VL	VL	VL	Bqaiaa Ech-Chouf	M	M	M
Bsaba El-Chouf	L	L	L	Chammis El-Chouf	ML	ML	ML	Chehim	M	M	M
Chemaarine	M	M	M	Chourit	VL	VL	VL	Daher El-Chouf	ML	ML	ML
Dalhoun	M	M	M	Damour	ML	ML	ML	Daraya El-Chouf	M	M	M
Deir El-Moukhalles	M	M	M	Deir Baba	ML	ML	ML	Deir Dourit	L	L	L
Deir El-Qamar	L	L	L	Deir Kouche	VL	VL	VL	Dibbieh	M	M	M
Dmit	M	M	M	Fouara Jaafar	VL	VL	VL	Fraidis El-Chouf	VL	VL	VL
Ghabet Jaafar	M	M	M	Gharife	ML	ML	ML	Haret Jandal	L	L	L
Hasrout	ML	ML	ML	Jadra	M	M	M	Jahlieh	ML	ML	ML
Jbeih El-Chouf	L	L	L	Jdeidet El-Chouf	VL	VL	VL	Jiyeh	M	M	M
Jleilyeh	ML	ML	ML	Jmailiyeh	M	M	M	Joun	M	M	M
Kahlounie El-Chouf	VL	VL	VL	Ketermaya	M	M	M	Kfar Faqoud	L	L	L
Kfar Hamal	VL	VL	VL	Kfar Him	ML	ML	ML	Kfar Katra	L	L	L
Kfar Niss	VL	VL	VL	Kfar hay	VL	VL	VL	Kfarnabrakh	VL	VL	VL
Khirbet Bisri	M	M	M	Knayse El-Chouf	L	L	L	Maaniyeh	M	M	M
Maasser Beiteddine	VL	VL	VL	Maasser El-Chouf	L	L	L	Majdalouna	M	M	M
Majdel El-Meouch	VL	VL	VL	Mazboud	M	M	M	Mazmoura	M	M	M
Mazraat El Chouf	L	L	L	Mazraat El Daher	M	M	M	Mazraat El-Douair	VL	VL	VL
Mechref	ML	ML	ML	Mghairie	M	M	M	Mghayrie El-Chouf	M	M	M
Moukhtara	VL	VL	VL	Mrusti	L	L	L	Mtolle	ML	ML	ML
Naameh	L	L	L	Niha El-Chouf	L	L	L	Ouadi Abou Youssef	M	M	M
Ouadi Ed-Deir	M	M	M	Ouadi El-Sit	VL	VL	VL	Ouadi bnehlay	M	M	M
Qraibeh	VL	VL	VL	Qreiaa	M	M	M	Rmayle El-Chouf	M	M	M
Semqaniyeh	VL	VL	VL	Sibline	M	M	M	Sirjbeil	ML	ML	ML
Warhanieh	VL	VL	VL	Werdaniyeh	M	M	M	Zaarourieh	ML	ML	ML

Baabda

Municipality	11-Apr	12-Apr	13-Apr	Municipality	11-Apr	12-Apr	13-Apr	Municipality	11-Apr	12-Apr	13-Apr
Abadiyeh	L	L	L	Ain Mouaffaq	VL	VL	VL	Araiya	L	L	L
Arbaniyeh	L	L	L	Arsoun	VL	VL	VL	Baabda	L	L	L
Baalchmey	VL	VL	VL	Bmaryam	VL	VL	VL	Bourj El-Brajneh	L	L	L
Boutchay	ML	ML	ML	Bsaba Baabda	L	L	L	Btekhney	VL	VL	VL
Btibyat	VL	VL	VL	Bzbedine	VL	VL	VL	Chbeniyeh	VL	VL	VL
Chiyah	L	L	L	Chmeisset Baabda	VL	VL	VL	Chouit	L	L	L
Deir El-harf	VL	VL	VL	Deir Khouna	VL	VL	L	Dlaybeh	M	M	M

Falougha	L	L	L	Furn El-Chebbak	L	L	L	Hadath Beyrouth	L	L	L
Halaliyeh Baabda	VL	VL	L	Hammana	VL	VL	VL	Haret El Sett	M	M	M
Haret Hamze	VL	VL	VL	Haret Hreik	VL	VL	L	Hasbaiya El-Metn	L	L	L
Jouar El-Hoz	VL	VL	VL	Jouret Arsoun	VL	VL	VL	Kfar Chima	L	L	L
Kfar Selouane	L	L	L	Khalouat Baabda	VL	VL	VL	Kneisset Baabda	VL	VL	L
Laylakeh	VL	VL	L	Louayzeh Baabda	ML	ML	ML	Merdache	L	L	L
Mzairaa Baabda	VL	VL	L	Ouadi Chahrour El Ol	ML	ML	ML	Ouadi Chahrour El So	M	M	M
Qalaa Baabda	VL	VL	VL	Qhraybe Baabda	VL	VL	VL	Qobbayaa	VL	VL	VL
Qornayel	VL	VL	VL	Qortada	L	L	L	Qrayeh Baabda	VL	VL	VL
Qsaibeh Baabda	VL	VL	L	Qtale Baabda	VL	VL	VL	Ras El Metn	L	L	L
Ras El-Haref	VL	VL	VL	Rouayset El-Ballout	VL	VL	L	Salima Baabda	L	L	L
Tahouitat El Ghadir	L	L	L	Tarchich	L	L	L	Zandouqa	VL	VL	L

Aley

Municipality	11-Apr	12-Apr	13-Apr	Municipality	11-Apr	12-Apr	13-Apr	Municipality	11-Apr	12-Apr	13-Apr
Abey	L	L	L	Aghmid	VL	VL	VL	Ain Dara	L	L	L
Ain Drafil	ML	ML	M	Ain El Halazoun	VL	VL	VL	Ain El-Rmmaneh	VL	VL	VL
Ain Jedideh	VL	VL	VL	Ain Ksour	VL	VL	L	Ain Onoub	L	L	L
Ain Traz	L	L	L	Ainab	VL	VL	L	Aley	L	L	L
Aramoun	L	L	ML	Aytat	L	L	L	Azouniyeh	VL	VL	VL
Baawerta	ML	ML	ML	Badghan Oua Wadi Bad	VL	VL	VL	Bassatine	L	L	L
Bayssour	L	L	L	Bchamoun	ML	ML	ML	Bdadoun	L	L	L
Behouara	VL	VL	VL	Bennay	L	L	L	Bhamdoun El-Dayaa	VL	VL	VL
Bhamdoun El-Mhatta	VL	VL	VL	Bkhechtey	VL	VL	VL	Bleibel	ML	ML	ML
Bmakine	VL	VL	L	Bmehray	VL	VL	VL	Bouzrid	L	L	L
Bserrine	VL	VL	VL	Bsous	L	L	L	Btalloun	VL	VL	VL
Btater	VL	VL	VL	Chanay	VL	VL	VL	Charoun	VL	VL	VL
Chartoun	VL	VL	VL	Chemlane	VL	VL	L	Choueifat El-Aamrous	L	L	L
Choueifat El-Oumara	L	L	L	Choueifat El-Quoubbe	L	L	L	Dakkoun	ML	ML	ML
Deir Qoubel	ML	ML	M	Dfoun	L	L	L	Douair El Remmaneh	VL	VL	VL
Ghaboun	VL	VL	VL	Habramoun	VL	VL	VL	Homs Oua Hama	VL	VL	VL
Houmal	L	L	ML	Jisr El Qadi	L	L	L	Kehaleh	L	L	L
Keyfoun	VL	VL	L	Kfar Aamey	VL	VL	VL	Kommatyeh	VL	VL	VL
Maasrati	VL	VL	VL	Majdel Baana	VL	VL	VL	Mansourieh et Ain El	VL	VL	VL
Mazraat El-Nahr	VL	VL	VL	Mchakhte	VL	VL	VL	Mecherfeh	VL	VL	VL
Mejdlaya	L	L	L	Mrayjat	VL	VL	VL	Ramliyah	VL	VL	VL
Rechmaya	L	L	L	Rejmeh	VL	VL	VL	Remhala	L	L	L
Rouaysset El Neemane	VL	VL	VL	Saoufar	VL	VL	VL	Selfaya	ML	ML	ML
Sirhmoul	L	L	L	Souq El Ghareb	VL	VL	L	Taazanieh	VL	VL	VL

Kesrouane

Municipality	11-Apr	12-Apr	13-Apr	Municipality	11-Apr	12-Apr	13-Apr	Municipality	11-Apr	12-Apr	13-Apr
Achkout	ML	ML	ML	Adma Oua Dafneh	M	M	M	Ain Ed-Delbe Kesroua	ML	ML	ML
Ain El-Rihane	M	M	M	Aintoura Kesrouane	ML	ML	ML	Ajaltoun	ML	ML	ML
Akaybeh Kesrouane	M	M	M	Aramoun Kesrouane	ML	ML	ML	Azra ouel Ozor	M	M	M
Ballouneh	ML	ML	ML	Batha	M	M	M	Bekaatat Achkout	L	L	L
Bekaatat Kanaan	L	L	L	Bizhel	M	M	M	Bouar	M	M	M
Bqaatouta	L	L	L	Bqaq Ed-Dine	M	M	M	Bzommar	ML	ML	ML

Chahtoul	ML	ML	ML	Chnaniir	M	M	M	Chouan	ML	ML	ML
Daraya Kesrouane	ML	ML	ML	Darououn	M	M	M	Deir Baqlouch	M	M	M
Dlebta	M	M	M	Eghbeh	M	M	M	Faraya	VL	VL	VL
Fatka	M	M	M	Feytroun	ML	ML	ML	Ghazir	M	M	M
Ghbaleh Kesrouane	ML	ML	ML	Ghedrass	M	M	M	Ghosta	M	M	M
Ghynéh	L	L	L	Harharaya w Kattine	ML	ML	ML	Harissa Kesrouane	M	M	M
Hayata	M	M	M	Hosein	M	M	M	Hrajel	L	L	L
Jdeideh Ghazir	ML	ML	ML	Jeita	M	M	M	Jounieh Ghadir	M	M	M
Jounieh Haret Sakhr	L	L	L	Jounieh Salel Alma	ML	ML	ML	Jounieh Sarba	M	M	M
Jouret Bedrane	ML	ML	ML	Jouret Mhad	ML	ML	ML	Jouret Termos	ML	ML	ML
Kfar Debiane	L	L	L	Kfar Tay Kesrouane	ML	ML	ML	Kfar Yassine	M	M	M
Kfour Kesrouane	ML	ML	ML	Kharayeb Nahr Ibrahi	M	M	M	Klayaat Kesrouane	ML	ML	ML
Maarab	M	M	M	Maaysra Kesrouane	M	M	M	Mayrouba	L	L	L
Mazraat Er-Ras	ML	ML	ML	Mazraat Mrah El-Mir	M	M	M	Mchaa El Ftouh	L	L	L
Mchaa Faraya	VL	VL	VL	Mchaa Kfar Dibiane	L	L	L	Mghaer	ML	ML	ML
Mradiyeh	M	M	M	Nahr Ed-Dahab	M	M	M	Nammoura Kesrouane	M	M	M
Ouata El Jaouz	L	L	L	Ouata Sillam	M	M	M	Raachine	M	M	M
Rayfoun	ML	ML	ML	Safra Kesrouane	M	M	M	Shayle Kesrouane	ML	ML	ML
Tabarja	M	M	M	Yahchouch	M	M	M	Zaaytreh	M	M	M
Zeytoun	M	M	M	Zouk Mikael	M	M	M	Zouk Mosbeh	M	M	M

Baalbek_Hermel

Baalbek

Municipality	11-Apr	12-Apr	13-Apr	Municipality	11-Apr	12-Apr	13-Apr	Municipality	11-Apr	12-Apr	13-Apr
Aadous	VL	VL	VL	Aamchki	VL	VL	VL	Aarsal	VL	VL	VL
Ain Baalbek	VL	VL	VL	Ain Bourday	VL	VL	VL	Ain El-Benye	M	M	M
Ain El-Jaouz Baalbek	L	L	L	Ain El-Siya Chadoura	VL	VL	VL	Al Khodr Baalbek	ML	ML	ML
Al Nabi Chit	L	L	L	Aynata Baalbek	M	M	M	Baalbek	VL	VL	VL
Bachwat	L	L	L	Barqa	L	L	L	Bednayel Baalbak	ML	ML	ML
Beit Chama	ML	ML	ML	Bijjaje	VL	VL	VL	Bouday	L	L	L
Brital	L	L	L	Btadi	L	L	L	Chaat	VL	VL	VL
Chaibe	ML	ML	ML	Chlifa	L	L	L	Chmestar	ML	ML	ML
Dar El-Oussa	M	M	M	Deir El-Ahmar	L	L	L	Deir Mar Maroun Baal	VL	VL	VL
Douris	L	L	L	Fakiha	VL	VL	VL	Hadath Baalbek	L	L	L
Ham	M	M	M	Haour Taala	ML	ML	ML	Hizzine	L	L	L
Hlebta	L	L	L	Hosh Barada	VL	VL	VL	Hosh El Dahab	VL	VL	VL
Hosh El Snid	L	L	L	Hosh El-Nabi	L	L	L	Hosh El-Rafiq	L	L	L
Hosh Tal Safiya	VL	VL	VL	Hrebta	L	L	L	laat	VL	VL	VL
Jebaa	VL	VL	VL	Jenta	L	L	L	Kfar Dabach	L	L	L
Kfar Dane	VL	VL	VL	Khraibeh El-Hermel	VL	VL	VL	Khreibet Baalbek	ML	ML	ML
Kneisset Baalbek	VL	VL	VL	Labueh	VL	VL	VL	Maarboun	M	M	M
Majdaloun	L	L	L	Maqneh	VL	VL	VL	Mazraat Beit Mcheik	M	M	M
Misraya	L	L	L	Mograq	VL	VL	VL	Nabha El-Damdoum	L	L	L
Nabi Chbay	L	L	L	Nabi Osman	VL	VL	VL	Nahleh baalbek	VL	VL	VL
Ouadi El-Oss	L	L	L	Qaa Baayoun	VL	VL	VL	Qaa Jouar Maqiye	VL	VL	VL
Qaa Ouadi El-Khanzir	L	VL	VL	Qah Baalbek	VL	VL	VL	Qarha Baalbek	VL	VL	VL

Qsarnaba	M	M	M	Ram Baalbek	VL	VL	VL	Ras Baalbek El Sahl	VL	VL	VL
Ras Baalbek El-Charq	VL	VL	VL	Riha	VL	VL	VL	Saaide	L	L	L
Sbouba	VL	VL	VL	Seriine El-Tahta	L	L	L	Slouqi	M	M	M
Taiba Baalbek	L	L	L	Talia	L	L	L	Taraiya	ML	ML	ML
Temnin El Fawqa	ML	ML	ML	Temnin El-Tahta	ML	ML	ML	Tfail	L	L	L
Yahfoufa	L	L	L	Yammouneh	ML	ML	ML	Younine	VL	VL	VL
Zboud	VL	VL	VL								

Hermel

Municipality	11-Apr	12-Apr	13-Apr	Municipality	11-Apr	12-Apr	13-Apr	Municipality	11-Apr	12-Apr	13-Apr
Charbine El-Hermel	L	L	L	Hermel Jbab	L	L	L	Hermel	L	VL	VL
Maaysra El-Hermel	VL	VL	VL	Michaa Mrajhine	L	L	L	Ouadi Faara	L	L	L
Ras Baalbek - Ouadi	VL	VL	VL	Ras Baalbek El Gharb	L	L	L	Zighrine	VL	VL	VL

Akkar

Akkar

Municipality	11-Apr	12-Apr	13-Apr	Municipality	11-Apr	12-Apr	13-Apr	Municipality	11-Apr	12-Apr	13-Apr
Aain Tinta	L	VL	VL	Aaiyat	L	VL	VL	Aakkar El-Aatiqa	L	VL	VL
Aamar Akkar	VL	VL	VL	Aamar El Baykat	L	VL	VL	Aamayer	L	VL	VL
Aamriyet Akkar	L	VL	VL	Aandqet	L	L	L	Aarmeh	L	VL	L
Aarqa	VL	VL	VL	Aawaynat	L	VL	VL	Aayoun Akkar	L	VL	VL
Abboudiye	VL	VL	L	Ain El-Zeit	L	VL	VL	Ain Yaaqoub	L	VL	VL
Akroum	L	L	L	Aridet Cheikh Zennad	L	L	L	Baldeh w Mazraat Bal	VL	VL	VL
Barcha	VL	VL	L	Bardeh	L	VL	VL	Bebnine	VL	VL	VL
Beino	L	VL	VL	Beit Ayoub	VL	VL	VL	Beit El-Haouch	VL	VL	VL
Beit Mellat	L	VL	VL	Beit Younes	VL	VL	VL	Berbara Akkar	L	VL	VL
Berqayel	VL	VL	VL	Bezbina	VL	VL	VL	Bireh Akkar	L	VL	VL
Borj	L	VL	VL	Bqerezla	VL	VL	VL	Bzal	VL	VL	VL
Chane	VL	VL	VL	Chaqdouf	L	VL	VL	Charbila	L	VL	VL
Cheikh Mohammad	VL	VL	VL	Cheikh Taba Es-Sahl	VL	VL	VL	Cheikh Taba	VL	VL	VL
Cheikh Zennad	L	L	L	Cheikhlar	L	VL	VL	Chir Hmairine	VL	VL	L
Daghle	L	VL	VL	Dahr Laissine	VL	VL	VL	Darine	VL	VL	VL
Dawra	L	VL	VL	Dawsa w Baghdadi	L	VL	VL	Dayret Nahr El-Kabir	L	VL	VL
Deir Dalloum	VL	VL	VL	Deir Jennine	L	VL	VL	Denbou	VL	VL	VL
Dibbabiyyeh	L	VL	L	Douair Aadwiyeh	L	VL	VL	Fassikine	L	VL	VL
Fnaydek	VL	VL	VL	Fraydes Akkar	L	VL	VL	Ghazayle	VL	VL	VL
Habchit	VL	VL	VL	Hakour	VL	VL	VL	Halba	VL	VL	VL
Haouchab	VL	VL	VL	Hayssat	VL	VL	VL	Haytla	VL	VL	VL
Hayzouq	VL	VL	VL	Hedd	L	VL	VL	Hmaira Akkar	VL	VL	VL
Hmaiss Akkar	VL	VL	VL	Hnaider	ML	L	L	Hokr Ed-Dahri	VL	VL	L
Hokr Etti	VL	VL	VL	Hokr Jouret Srar	VL	VL	L	Houaich	VL	VL	VL
Hrar	VL	VL	VL	Idbil	VL	VL	VL	Ilal	VL	VL	VL
Janine	VL	VL	L	Jdeidet El-Joumeh	VL	VL	VL	Jdeidet El-Kaiteh	VL	VL	VL
Jebayel	VL	VL	VL	Kafr	ML	ML	ML	Kafr	L	VL	VL
Karm Asfour	VL	VL	VL	Kfar Melki Akkar	VL	VL	VL	Kfar Noun	L	VL	L
Kfarharra	VL	VL	VL	Khalsa	L	VL	VL	Kharnoubet Akkar	VL	VL	L

Khirbet Daoud Aakkar	L	VL	VL	Khirbet El Remmane	L	VL	VL	Khirbet Shar	L	VL	VL
Khoreybet El-Jindi	VL	VL	VL	Khreibet Aakkar	VL	VL	VL	Kneisset Aakkar	VL	VL	VL
Kneisset Hnaider	M	ML	ML	Knisse	VL	VL	VL	Kroum El-Aarab	VL	VL	VL
Kwachra	L	VL	VL	Kweykhat	VL	VL	VL	Machta Hammoud	L	VL	VL
Majdala	VL	VL	VL	Majdel Akkar	L	VL	VL	Mar Touma	VL	VL	VL
Marlaya Melhem	VL	VL	VL	Mashha	VL	VL	VL	Massoudiye	VL	VL	L
Mazraat Beit Ghattas	VL	VL	VL	Mazraat En-Nahriye	L	VL	VL	Mechmech	VL	VL	VL
Memneh	VL	VL	VL	Mhammara	VL	VL	VL	Mighraq Aakkar	VL	VL	VL
Minyara	VL	VL	VL	Moqayteh	L	L	L	Mounjez	L	VL	L
Msalla	L	VL	VL	Mzeihmeh	VL	VL	VL	Nfaiseh	VL	VL	VL
Noura Et-Tahta	L	VL	L	Ouadi El-Haour	VL	VL	VL	Ouadi El-Jamous	VL	VL	VL
Ouyoun El-Ghizlane	VL	VL	VL	Qaabarine	VL	VL	VL	Qabaait	VL	VL	VL
Qachlaq	VL	VL	VL	Qantara Aakkar	VL	VL	VL	Qarha Aakkar	L	L	L
Qarqaf	VL	VL	VL	Qboula	L	VL	VL	Qleiaat Aakkar	L	L	L
Qloud El-Baqie	VL	VL	VL	Qobaiyat Aakkar	L	VL	VL	Qobbat Chamrat	L	L	L
Qorayat	VL	VL	VL	Qornet Aakkar	VL	VL	VL	Qsair Aakkar	L	VL	VL
Rahbe	VL	VL	VL	Rihaniyet Aakkar	VL	VL	VL	Rmah	L	VL	L
Rmoul	L	L	L	Saadine	VL	VL	VL	Sadaqa	VL	VL	VL
Saidnaya	VL	VL	VL	Sammouniye	VL	VL	VL	Sayssouq	VL	VL	VL
Semmaqiye	VL	VL	L	Semmaqli	VL	VL	VL	Sfinet El-Dreib	L	VL	VL
Sfinet El-Qaitaa	VL	VL	VL	Sindyanet Zeidane	L	VL	VL	Souaisset Aakkar	VL	VL	VL
Srar	VL	VL	VL	Tal Abbas El Gharby	VL	VL	VL	Tal Abbas El-Charqy	VL	VL	VL
Tal Biret	VL	VL	L	Tal Hmayra	VL	VL	L	Tal Maayan Tal Kiri	VL	VL	VL
Tal Sibel	VL	VL	VL	Tallet Chattaha	VL	VL	VL	Tikrit	VL	VL	VL
Tleil	VL	VL	VL	Tshea	VL	VL	VL	Zawarib	VL	VL	VL
Zouq El Hosniyeh	VL	VL	VL	Zouq El-Haddara	VL	VL	VL	Zouq El-Hbalsa	VL	VL	VL
Zouq El-Moqachrine	VL	VL	VL								

Sud

Sour

Municipality	11-Apr	12-Apr	13-Apr	Municipality	11-Apr	12-Apr	13-Apr	Municipality	11-Apr	12-Apr	13-Apr
Aaiyeh	VL	VL	L	Aalma El-Chaab	VL	VL	L	Aaytit	VL	VL	L
Abbassiyeeh Sour	L	L	ML	Abou Chech	VL	VL	L	Ain Abou Abdallah	M	M	M
Ain Baal	VL	VL	L	Arzoun	L	L	L	Aziyeh	VL	VL	L
Baflaya	L	L	L	Barich	L	L	L	Batouliyeh	VL	VL	L
Bayad	VL	VL	L	Bazouriyeh	L	L	L	Bediass	L	L	ML
Bestiyat	L	L	L	Borj El Chemali	L	L	L	Borj En-Naqoura	VL	VL	L
Borj Rahhal	L	L	ML	Boustane	VL	VL	L	Btaychiyeh	VL	VL	L
Chaaitiye	VL	VL	L	Chameh	VL	VL	L	Chehabiye	VL	VL	L
Chehour	ML	ML	M	Chihine	VL	VL	L	Debaal Sour	VL	VL	L
Deir Amess	VL	VL	L	Deir Kifa	L	L	L	Deir Qanoun El-Ain	VL	VL	L
Deir Qanoun El-Naher	ML	ML	M	Derdghaiya	L	L	L	Dhayra	VL	VL	L
Halloussiyeh	L	L	ML	Hamoul	VL	VL	L	Hanaouey	VL	VL	L
Henniye	VL	VL	L	Hmairi Sour	L	L	ML	Iskandarouna Sour	VL	VL	L
Jbal El Botom	VL	VL	L	Jebbin	VL	VL	L	Jennata	L	L	L
Jijim	VL	VL	L	Jouaiya	VL	VL	L	Kneisset Sour	VL	VL	L

Maarake	L	L	L	Maaroub	L	L	L	Majadel	VL	VL	L
Majdalzoun	VL	VL	L	Mansouri Sour	VL	VL	L	Marnba	ML	ML	ML
Marouahine	VL	VL	L	Mazraat El-Zalloutiy	VL	VL	L	Mazraat Mechref	VL	VL	L
Mazraat Tayr Semhat	M	M	M	Mheilib	ML	ML	M	Neffakhiyeh	L	L	L
Niha Sour	L	L	L	Ouadi Jilo	VL	VL	L	Qana	VL	VL	L
Qolaileh Sour	VL	VL	L	Rechknayan	VL	VL	L	Rmadiyah	VL	VL	L
Selha Sour	VL	VL	L	Siddiqine	VL	VL	L	Sour	L	L	L
Srifa	L	L	ML	Tayr Debbe	L	L	L	Tayr Felsay	L	L	ML
Tayr Harfa	VL	VL	L	Touayri	ML	ML	ML	Toura	L	L	ML
Yanouh Sour	VL	VL	L	Yarine	VL	VL	L	Zebqine	VL	VL	L

Saida

Municipality	11-Apr	12-Apr	13-Apr	Municipality	11-Apr	12-Apr	13-Apr	Municipality	11-Apr	12-Apr	13-Apr
Aanqoun	M	M	M	Aaqtanit	M	M	M	Aarab Ej-Jall	M	M	M
Aarab Tabbaya	M	M	M	Abra Saida	M	M	M	Adloun	M	M	M
Adousiyeh	M	M	M	Ain-El-Deleb	M	M	M	Arzai	ML	ML	M
Babliyah	M	M	M	Barty	M	M	M	Bissariyeh	M	M	M
Bnaafoul	M	M	M	Bqosta	M	M	M	Bramiy	M	M	M
Daoudiyeh	M	M	M	Dareb El-Sim	M	M	M	Erkay	M	M	M
Ghassanieh	M	M	M	Ghazieh	M	M	M	Hajjeh	M	M	M
Haret Saida	M	M	M	Hartiyeh	M	M	M	Hlaliye Saida	M	M	M
Insariyat	M	M	M	Jazira Saida	ML	ML	M	Kafar Bit	M	M	M
Kaoutariyet El-Siyad	M	M	M	Kfar Chellal	M	M	M	Kfar Hatta Saida	M	M	M
Kfar Milke Saida	M	M	M	Khartoum	M	M	M	Khaziz	M	M	M
Khirbet Ed-Douair Sa	M	M	M	Khirbet El-Bassal	M	M	M	Khrayeb Saida	M	M	M
Loubieh	M	M	M	Maghdouche	M	M	M	Majdelyoun	M	M	M
Matariyet El-Choumar	ML	ML	ML	Matayriyeh	M	M	M	Mazraat 'Mseileh	M	M	M
Mazraat 'Snaiber	M	M	M	Mazraat Aarab Soukka	M	M	M	Mazraat Deir Taqla	M	M	M
Mazraat El Yahoudiye	M	M	M	Mazraat El-Housseini	M	M	M	Mazraat El-Mhaydaleh	M	M	M
Mazraat El-Ouasta	M	M	M	Mazraat Jamjim	M	M	M	Mazraat Kaoutariyet	M	M	M
Mazraat Kfar Badda	M	M	M	Mazraat Oussamiyat	M	M	M	Mazraat Sari	M	M	M
Mazraat Sinai	M	M	M	Meemariyeh	M	M	M	Merouaniyeh	M	M	M
Miyeh ou Miyeh	M	M	M	Najjariyeh	M	M	M	Qaaqaiyat El-Snaouba	M	M	M
Qnarit	M	M	M	Qraiye Saida	M	M	M	Saida Ed-Dekermane	M	M	M
Saida El-Oustani	M	M	M	Saida El-Qadimeh	M	M	M	Saida Kefraya	M	M	M
Saksakiyeh	M	M	M	Salhigh Saida	M	M	M	Sarafand	M	M	M
Sfenta	M	M	M	Tafahta	M	M	M	Tanbourit	M	M	M
Tebna	M	M	M	Zaghdraiya	M	M	M	Zeita	M	M	M
Zrariyeh	ML	ML	M								

Jezzine

Municipality	11-Apr	12-Apr	13-Apr	Municipality	11-Apr	12-Apr	13-Apr	Municipality	11-Apr	12-Apr	13-Apr
Ain El-Mir (El Estab	M	M	M	Anane	M	M	M	Aramta	L	L	L
Ariya	L	L	L	Aychiyeh	L	L	L	Azour	M	M	M
Baba	M	M	M	Bayssour Jezzine	M	M	M	Benoueteh Jezzine	ML	ML	ML
Bhannine	L	L	L	Bisri	M	M	M	Bkassine	M	M	M
Bouslaya	M	M	M	Btedine El-Leqech	M	M	M	Chbail	M	M	M
Choualiq Jezzine	M	M	M	Dahr Ed-Deir	ML	ML	ML	Deir El Qattine	M	M	M

Demachqiyeh	L	L	L	Ghabbatiyeh	ML	ML	ML	Harf Jezzine	M	M	M
Hassaniyeh	M	M	M	Haytouleh	M	M	M	Haytura	M	M	M
Hidab	M	M	M	Homsiyeh	ML	ML	ML	Jabal Toura	L	L	L
Jarmaq	M	M	M	Jensnaya	M	M	M	Jernaya	M	M	M
Jezzine	L	L	L	Karkha	M	M	M	Kfar Falous	M	M	M
Kfar Houna	L	L	L	Kfar Jarrah	M	M	M	Lebaa	M	M	M
Louayzet Jezzine	ML	ML	ML	Machmouche	M	M	M	Mahmoudiyeh Jezzine	L	L	L
Maknounye Jezzine	M	M	M	Maraat Ouazaiyeh	L	L	L	Mazraat Daraya	L	L	L
Mazraat El-Aarqoub	M	M	M	Mazraat El-Mathane	M	M	M	Mazraat El-Rahbane	ML	ML	ML
Mazraat Khallet Khaz	ML	ML	ML	Mazraat Louzid (Loua	M	M	M	Mazraat Qrouh	L	L	L
Mazraat Tamra	L	L	L	Mazraat Zighrine Jez	L	L	ML	Mazraat	ML	ML	ML
Mharbiyeh	M	M	M	Midane Jezzine	ML	ML	ML	Mjeydel Jezzine	M	M	M
Mlikh	ML	ML	ML	Mrah El-Hbasse	M	M	M	Ouadi Baanqoudaine	M	M	M
Ouadi El-Laymoun	M	M	M	Ouardiyeh	M	M	M	Qabaa Jezzine	M	M	M
Qatrani	ML	ML	ML	Qaytouleh	M	M	M	Qtaleh Jezzine	M	M	M
Rihane Jezzine	L	L	L	Rimat	M	M	M	Roum	M	M	M
Roummanet	L	L	L	Sabbah	ML	ML	ML	Saydoun	M	M	M
Sfaray	M	M	M	Snaya	M	M	M	Sojoud	ML	ML	ML
Srayri	L	L	L	Taaid	M	M	M	Wadi Jezzine	ML	ML	ML
Zhalta	M	M	M								

Bekaa

West Bekaa

Municipality	11-Apr	12-Apr	13-Apr	Municipality	11-Apr	12-Apr	13-Apr	Municipality	11-Apr	12-Apr	13-Apr
Aammiq BG	L	L	L	Ain El Tineh BG	M	M	M	Ain Zebdeh	ML	ML	ML
Ana	L	L	L	Aytanit	ML	ML	ML	Baaloul BG	M	M	M
Bab Mareh	M	M	M	Chouberqiye Aammiq	L	L	L	Dakoue	L	L	L
Deir Ain El-Jaouze	M	M	M	Deir Tahniche	L	L	L	Ghaza	L	L	L
Harime El-Soughra	L	L	L	Hoch Harimeh	L	L	L	Jazira BG	L	L	L
Jib Jennine	L	L	L	Kamed-El-Laouz	L	L	L	Kefraya BG	ML	ML	ML
Khiara El Atika	VL	VL	VL	Khiara	L	L	L	Khirbet Qanafar	ML	ML	ML
Lala	ML	ML	ML	Lebbaya BG	M	M	M	Loussa	ML	ML	ML
Machghara	M	M	M	Manara (Hammara) BG	M	M	M	Mansoura BG	L	L	L
Marej BG	L	L	L	Maydoun	M	M	M	Ouaqf BG	L	L	L
Qaraaoun	M	M	M	Qelya	M	M	M	Raouda (Istabel)	L	L	L
Saghbine	ML	ML	ML	Sohmor	M	M	M	Soltan Yacoub el Ara	L	L	L
Souairy	ML	ML	ML	Sultan Yaacoub	L	L	L	Tal Znouh	L	L	L
Yehmor BG	ML	ML	ML	Zilaya	ML	ML	ML				

Zahle

Municipality	11-Apr	12-Apr	13-Apr	Municipality	11-Apr	12-Apr	13-Apr	Municipality	11-Apr	12-Apr	13-Apr
Aanjar (Haouch Mouss	L	L	L	Ablah	ML	ML	ML	Ain Kfarzabad	L	L	L
Ali-El-Nahri	L	L	L	Bar Elias	VL	VL	VL	Bouarej	ML	ML	ML
Cheberqiyet Tabet	VL	VL	VL	Chtaura	L	L	L	Deir El Ghazal	L	L	L
Delhamiyet Zahle	L	L	L	Ferzol	ML	ML	ML	Haouch El-Ghanam	L	L	L
Haouch Es-Siyadeh	L	L	L	Haouch Hala	L	L	L	Haouch Mandara	L	L	L

Haouch Qayssar	ML	ML	ML	Hezerta	ML	ML	ML	Hosh Moussa	L	L	L
Jdita	L	L	L	Kfarzabad	L	L	L	Ksara	VL	VL	VL
Majdel Aanjar	L	L	L	Makssi	L	L	L	Massa	L	L	L
Mazraat Er-Remtaniye	M	M	M	Mrayjat Zahle	M	M	M	Mzaraa Zahle	M	M	M
Nabi Ayla	ML	ML	ML	Nasriyet Rizk	L	L	L	Nasriyet Zahle	VL	VL	VL
Niha Zahle	M	M	M	Ouadi Ed-Deloum	M	M	M	Ouadi El-Arayech	L	L	L
Qaa El Rim	M	M	M	Qab Elias	L	L	L	Qousaya	L	L	L
Rhit	L	L	L	Riyak	L	L	L	Saadnayel	L	L	L
Taal El-Akhdar	ML	ML	ML	Taalbeya	L	L	L	Taanayel	VL	VL	VL
Talamara	L	L	L	Tcheflik Edde Haouch	ML	ML	ML	Tcheflik Qiqano	L	L	L
Terbol Zahle	L	L	L	Touaite Zahle	ML	ML	ML	Zahle Aradi	L	L	L
Zahle El-Berbara	L	L	L	Zahle El-Maallaqa	VL	VL	VL	Zahle El-Midane	VL	VL	VL
Zahle Er-Rassiye	L	L	L	Zahle Haouch El-Ouma	VL	VL	VL	Zahle Haouch El-Ouma	L	L	L
Zahle Haouch Ez-Zara	VL	VL	VL	Zahle Maalaqa Aradi	L	L	L	Zahle Mar Antonios	VL	VL	VL
Zahle Mar Elias	L	L	L	Zahle Mar Gerios	L	L	L	Zahle Saydet En-Naja	L	L	L
Zebdoul	ML	ML	ML								

Rachaiya

Municipality	11-Apr	12-Apr	13-Apr	Municipality	11-Apr	12-Apr	13-Apr	Municipality	11-Apr	12-Apr	13-Apr
Ain Arab Rachaiya	L	L	L	Ain Ata	M	M	M	Ain Harche	ML	ML	ML
Aqabe Rachaya	L	L	L	Ayha	L	L	L	Ayta El Fokhar	ML	ML	ML
Bakifa Rachaya	ML	ML	ML	Bakka	L	L	L	Beit Lahya	M	M	M
Bireh Rachaiya	ML	ML	ML	Daher El Ahmar	M	M	M	Deir El-Achayer	L	L	L
Heloua Rachaiya	L	L	L	Hoch El Qannabeh Rac	M	M	M	Kaoukaba Bou Arab	M	M	M
Kfar Danis	ML	ML	ML	Kfar Mechki	M	M	M	Kfar Qouq	L	L	L
Kherbet Rouha	L	L	L	Majdel Balhiss	M	M	M	Mdoukha	L	L	L
Mhaydseh Rachaiya	M	M	M	Nabi Safa	ML	ML	ML	Rachaiya	ML	ML	ML
Rafid Rachaiya	M	M	M	Selsata (Mazraat Dei	L	L	L	Tannoura	M	M	M
Yanta	L	L	L								

Beyrouth

Beyrouth

Municipality	11-Apr	12-Apr	13-Apr	Municipality	11-Apr	12-Apr	13-Apr	Municipality	11-Apr	12-Apr	13-Apr
Achrafieh	L	L	L	Ain el-Mreisse	ML	ML	ML	Bachoura	M	M	M
Beirut Central Distr	VL	VL	VL	Marfai	L	L	L	Mazraa	ML	ML	ML
Medaouar	M	M	M	Minet el-Hosn	L	L	L	Mwssaitbeh	L	L	L
Ras Beirut	L	L	L	Rmeil	ML	ML	ML	Saifi	L	L	L
Zqaq el-Blat	L	L	L								