

Lebanon Fire Risk Bulletin



CIVIL DEDEFENCE

Refer to cadast table condition.

Please note that the indicated temperature is at 2 meters height from the ground.

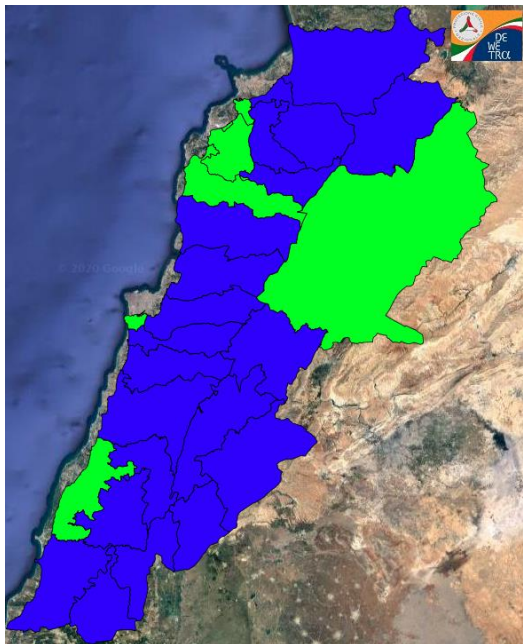
General description of potential fire risk situation

Symbol	Level of risk	Meaning and actions
VL	Very low	Very low fire risk. Controlled burning operations can be hardly executed due to high fuel moisture content. Normally wildfires self-extinguish.
L	Low	Low fire risk. Controlled burning operations can be executed with a reasonable degree of safety.
ML	Medium low	Medium-low fire risk. Controlled burning operations can be executed in safety conditions. All the fires need to be extinguished.
M	Medium	Medium fire risk. Controlled burning operations would be avoided. All the fires need to be very well extinguished.
M	Medium high	Controlled burning is not recommended. Open flame will start fires. Cured grasslands and forest litter will burn readily. Spread is moderate in forests and fast in exposed areas. Patrolling and monitoring is suggested. Fight fires with direct attack and all available resources.
H	High	Ignition can occur easily with fast spread in grass, shrubs and forests. Fires will be very hot with crowning and short to medium spotting. Direct attack on the head may not be possible requiring indirect methods on flanks. Patrolling and monitoring the territory is highly suggested.
E	Extreme	Ignition can occur also from sparks. Fires will be extremely hot with fast rate of spread. Control may not be possible during day due to long range spotting and crowning. Suppression forces should limit efforts to limiting lateral spread. Damage potential total. Patrolling and monitoring the territory is highly suggested.

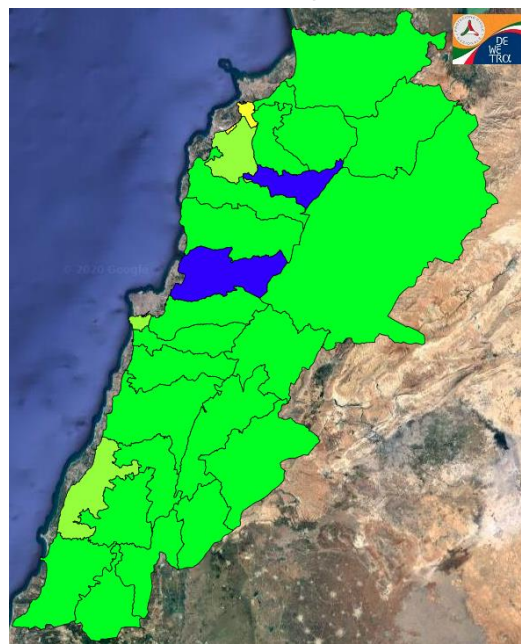
Beirut, 13 February 2020

FIRE RISK INDEX

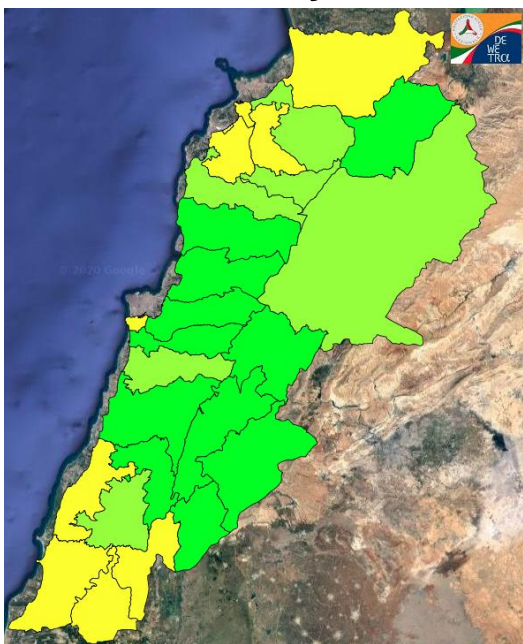
12 February 2020



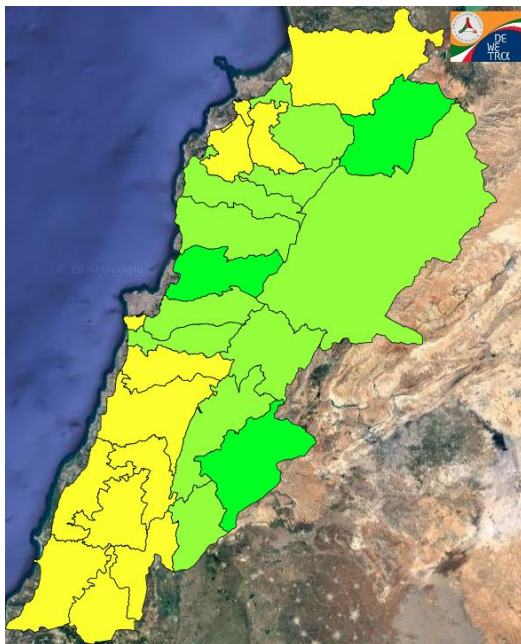
13 February 2020



14 February 2020



15 February 2020

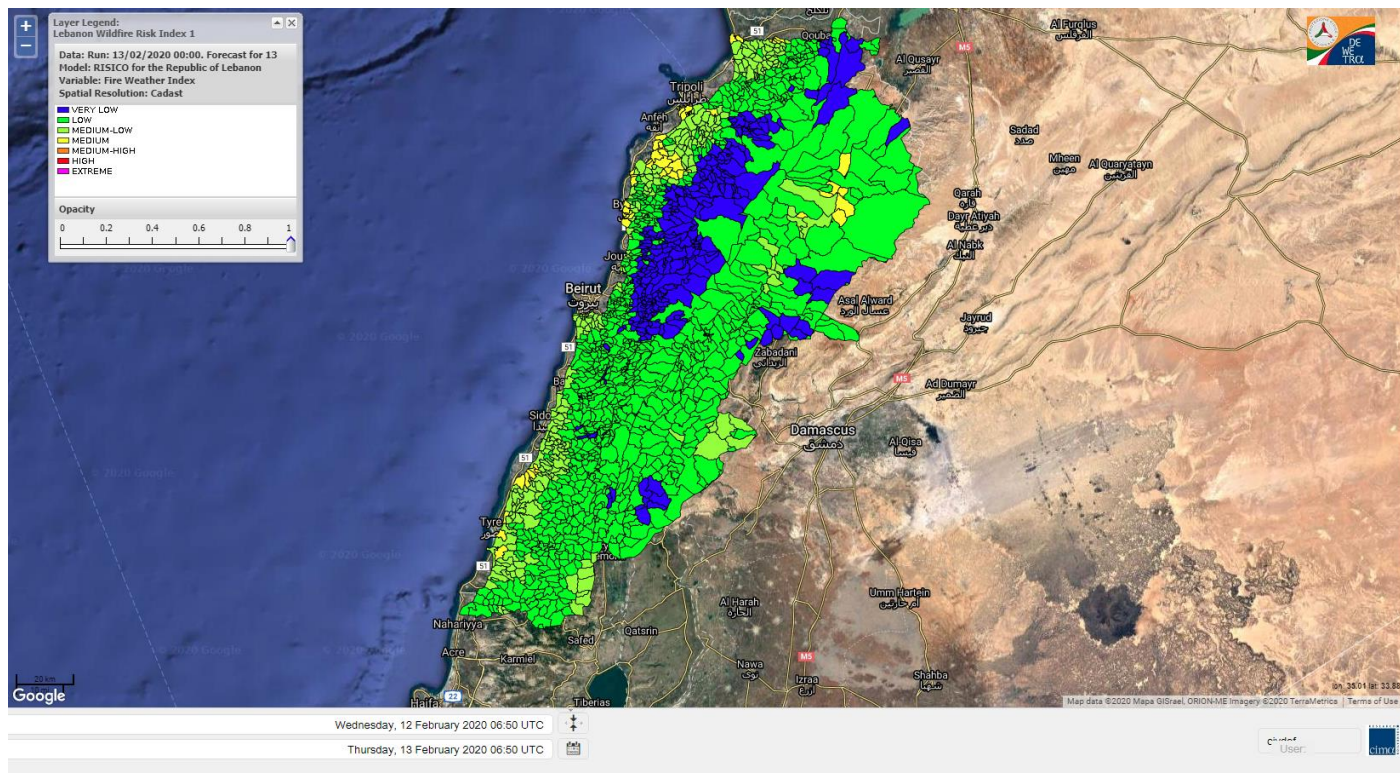


Layer Legend:
Lebanon Wildfire Risk Index 1

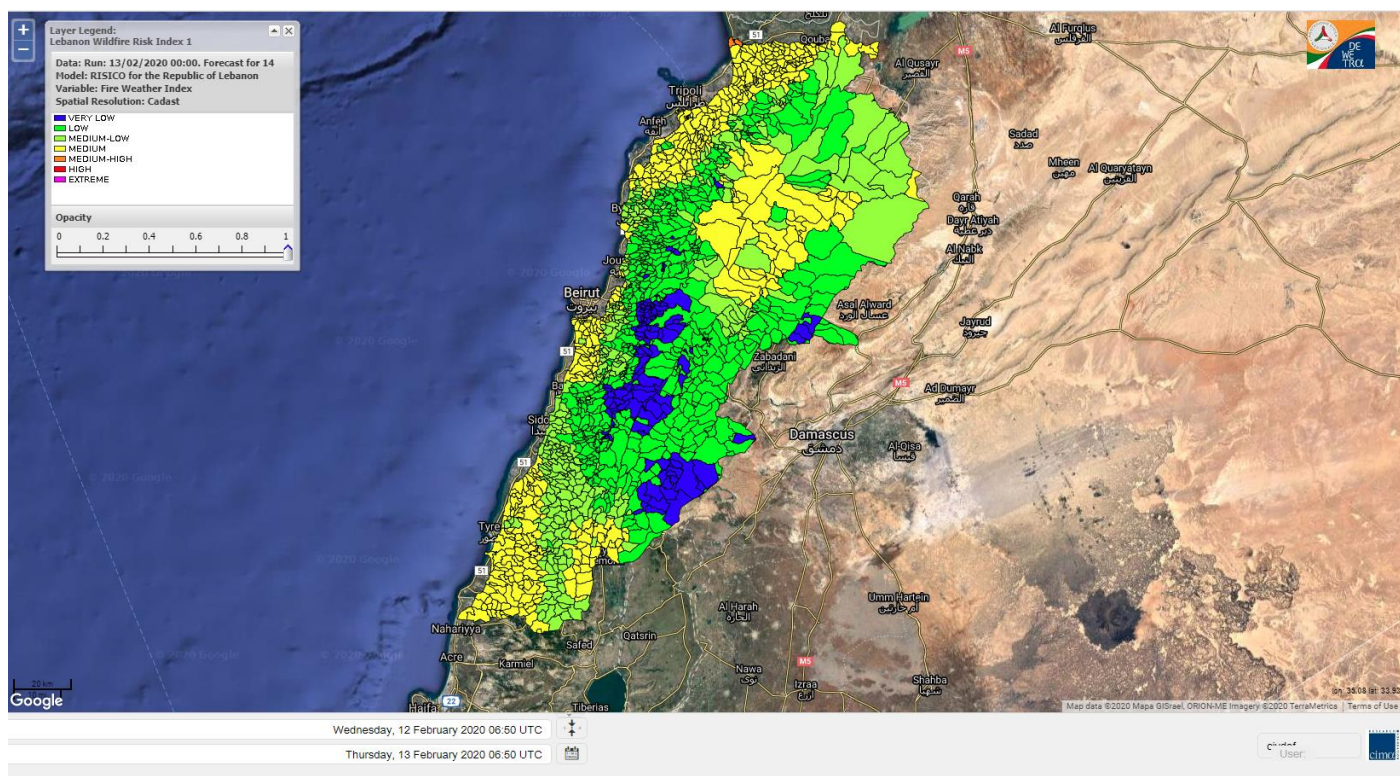
Data: Run: 13/02/2020 00:00. Forecast for 13
Model: RISICO for the Republic of Lebanon
Variable: Fire Weather Index
Spatial Resolution: Caza

- VERY LOW
- LOW
- MEDIUM-LOW
- MEDIUM
- MEDIUM-HIGH
- HIGH
- EXTREME

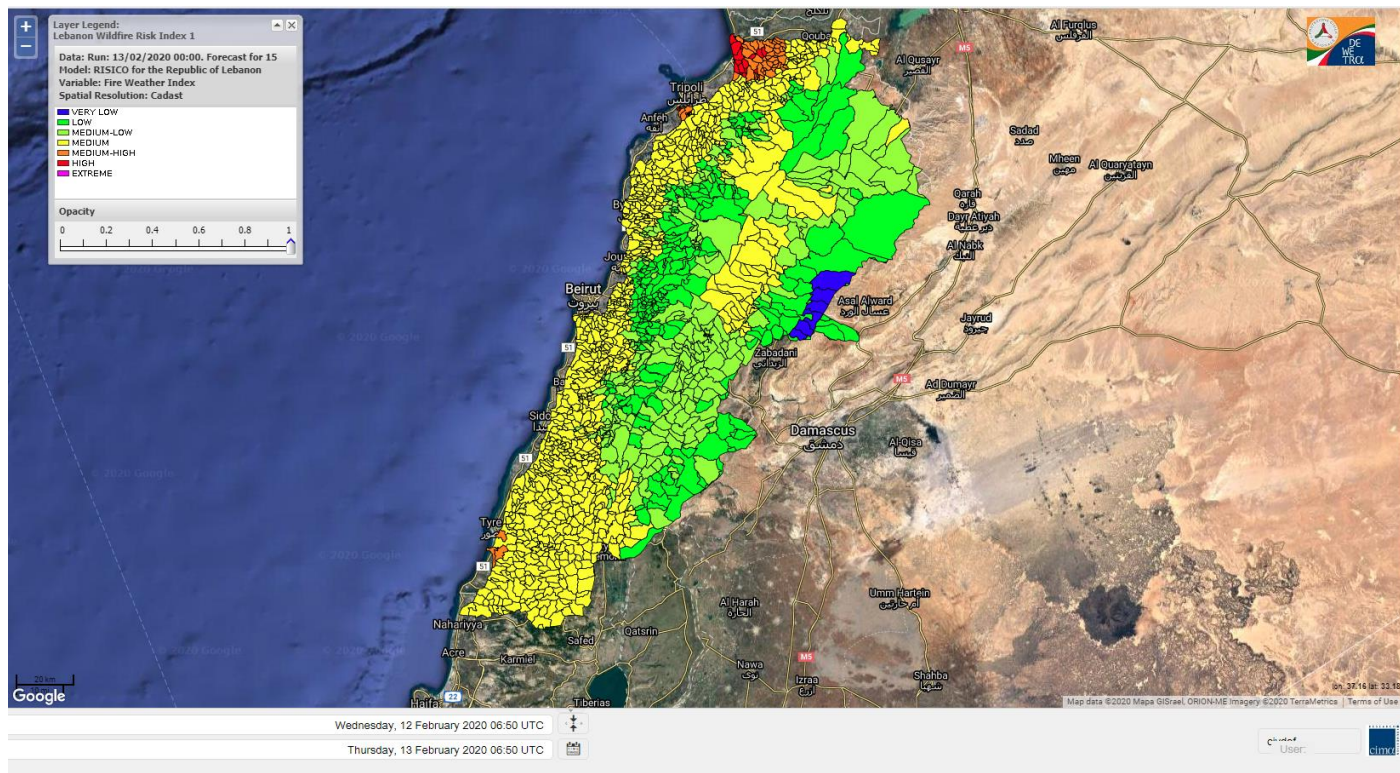
Lebanon for 13 February 2020



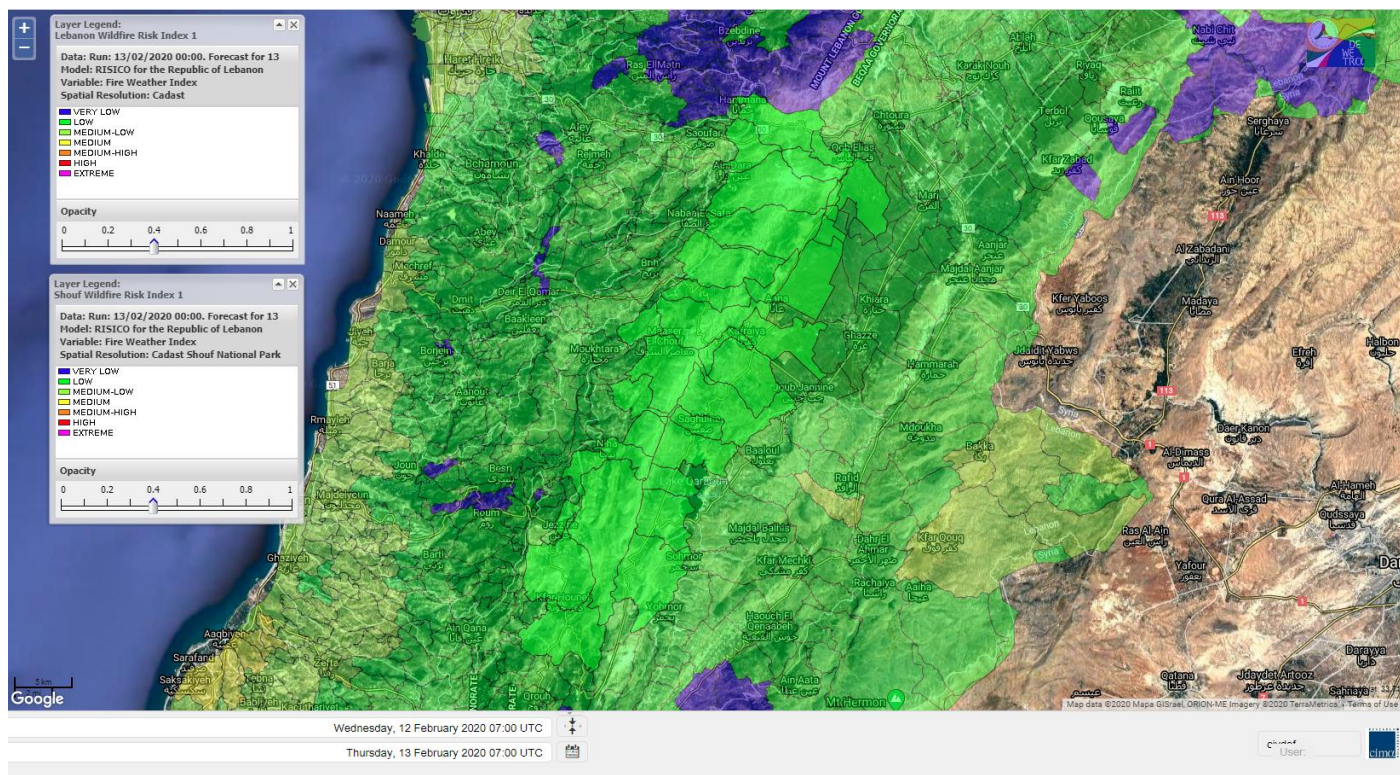
Lebanon for 14 February 2020



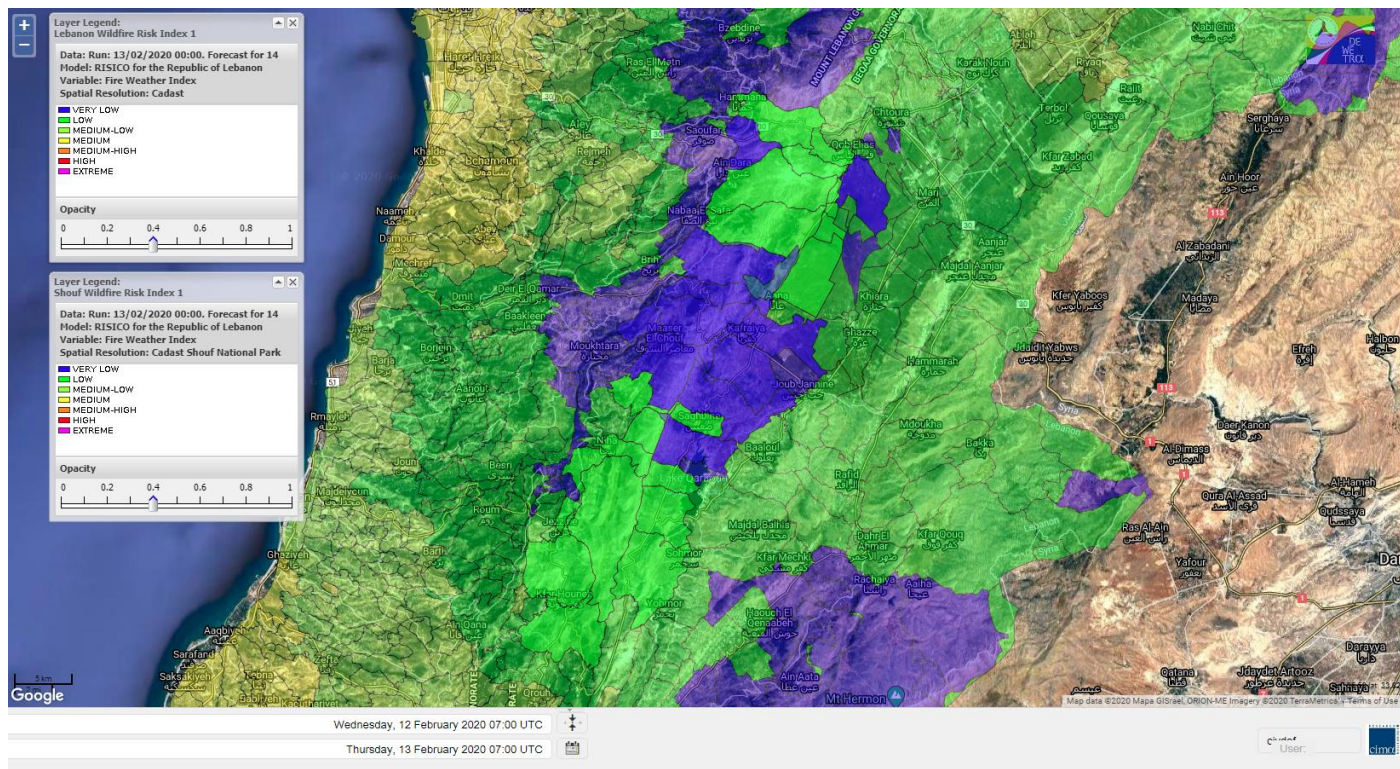
Lebanon for 15 February 2020



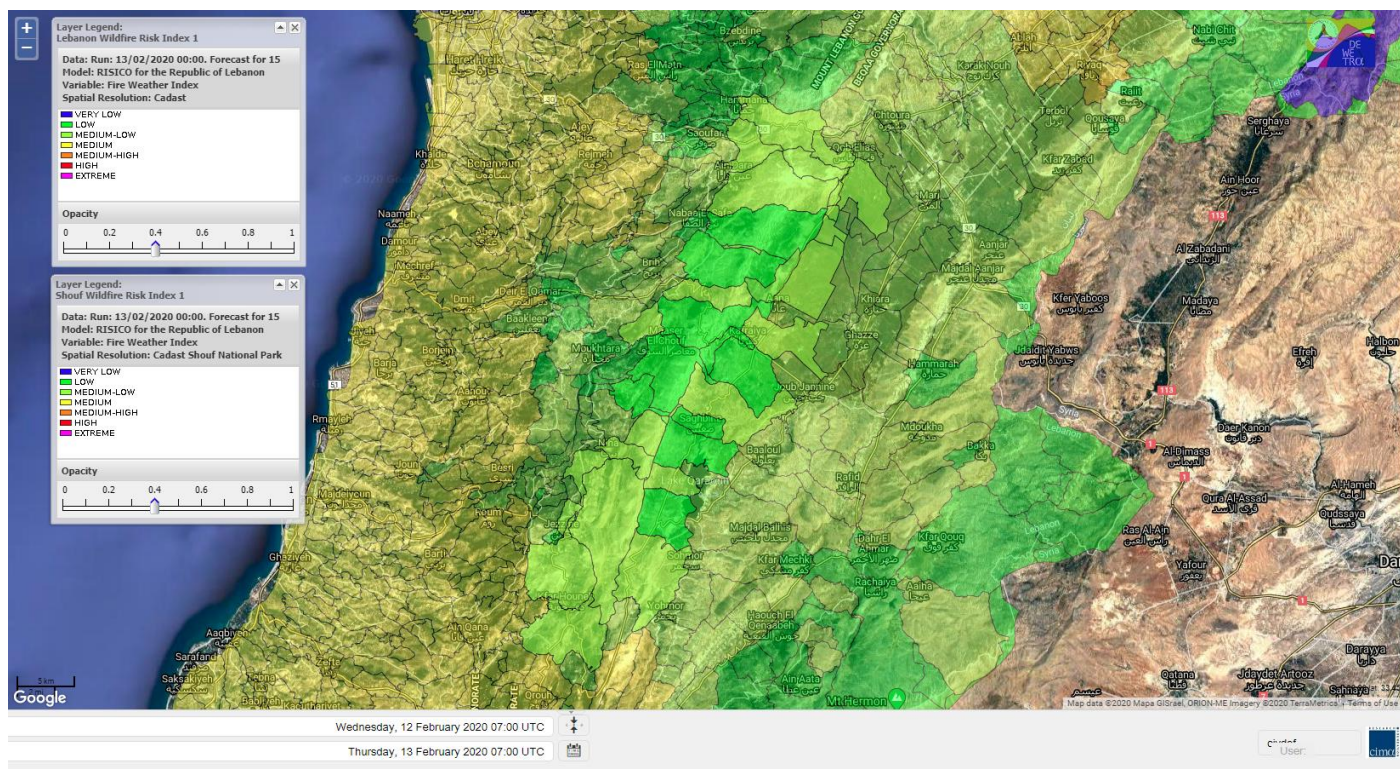
Shouf Biosphere Reserve Forecast for 13 February 2020



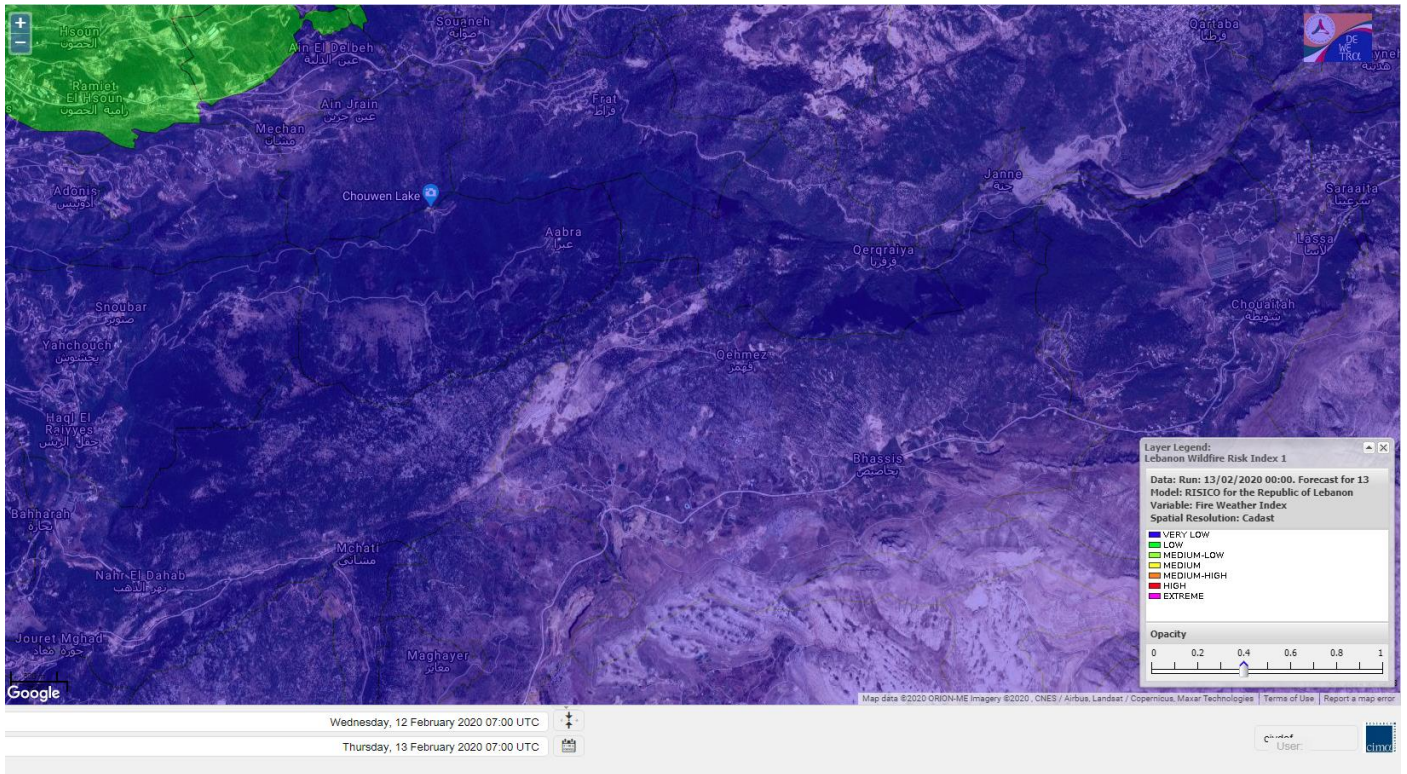
Shouf Biosphere Reserve Forecast for 14 February 2020



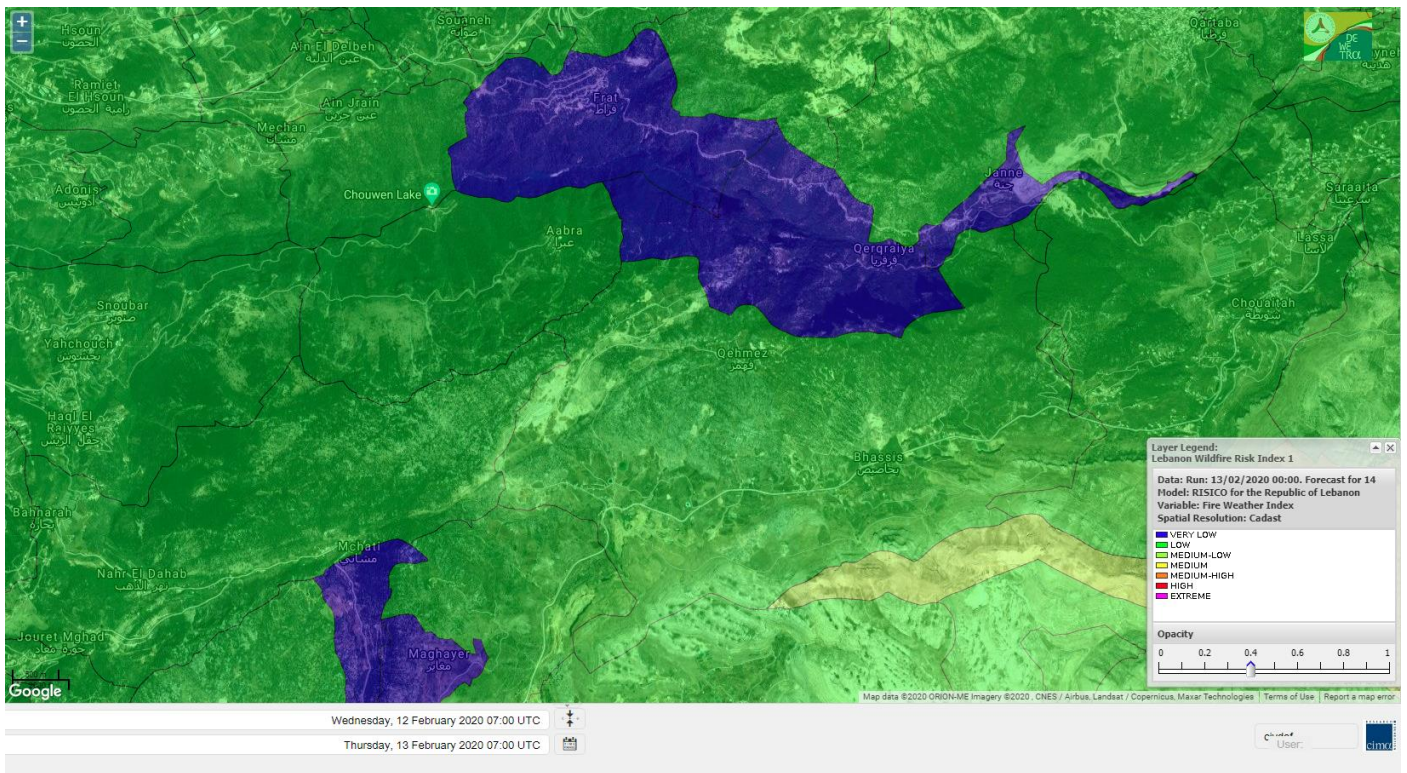
Shouf Biosphere Reserve Forecast for 15 February 2020



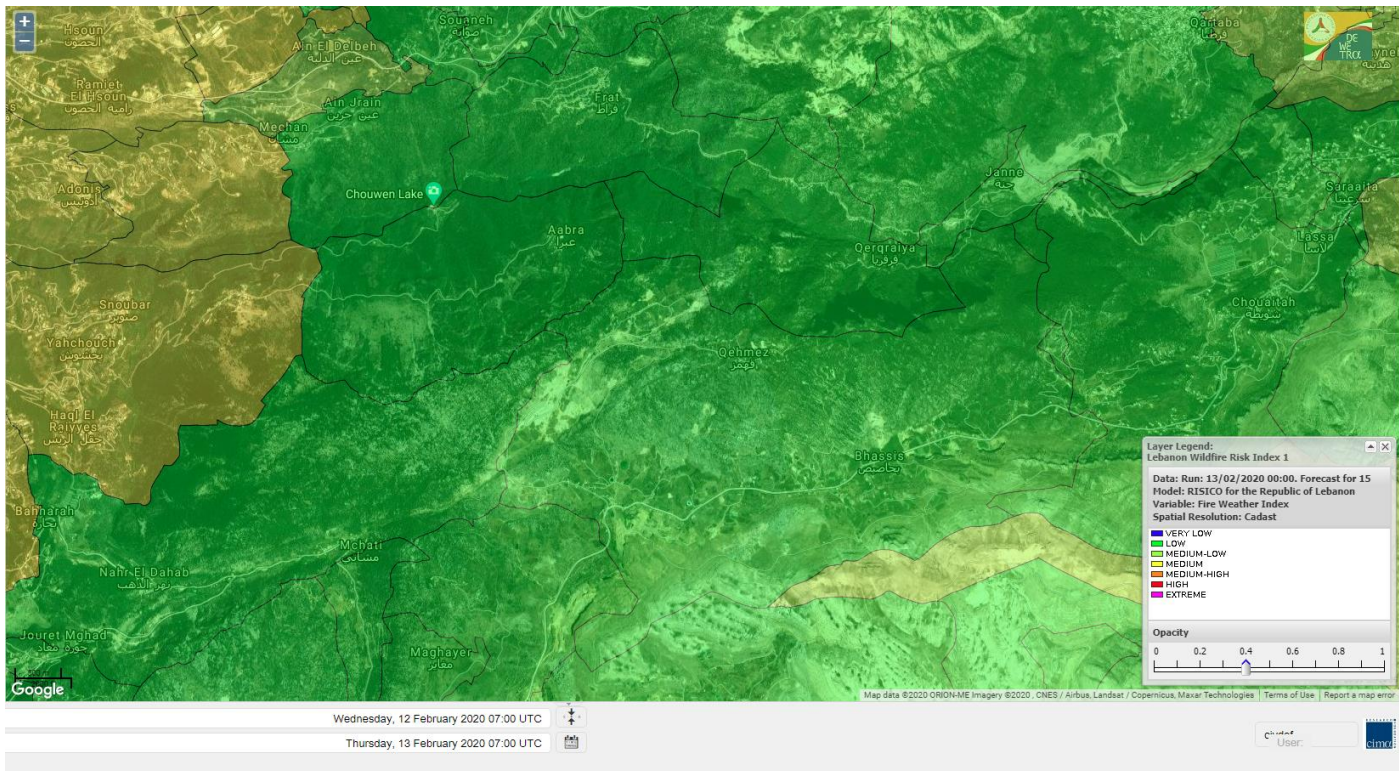
Jabal Moussa Reserve Forecast for 13 February 2020



Jabal Moussa Reserve Forecast for 14 February 2020



Jabal Moussa Reserve Forecast for 15 February 2020



Beirut, Beirut Governorate, Lebanon 10-Day Weather Forecast

18° ACHRAFIEH, RIZK STATION | CHANGE

TODAY

HOURLY

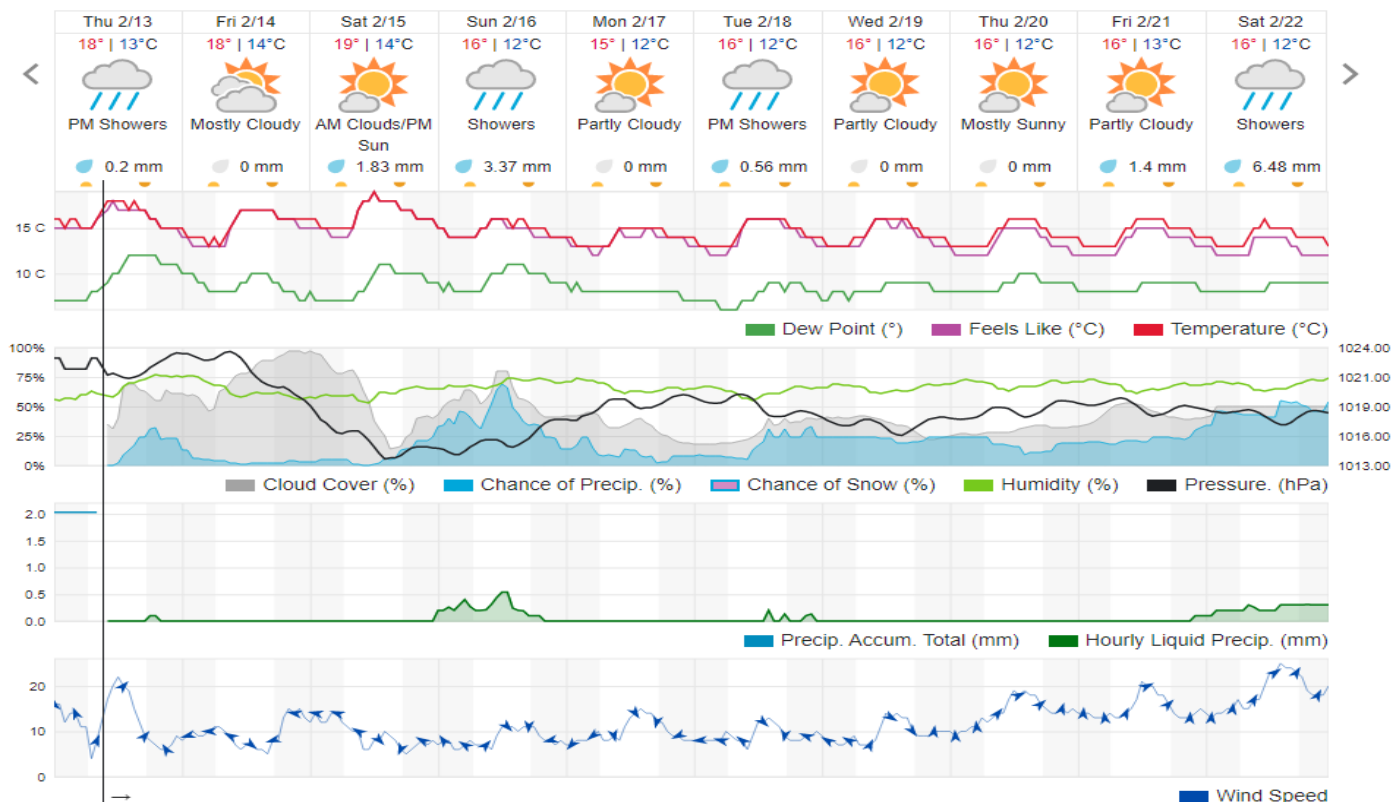
10-DAY

CALENDAR

HISTORY

WUNDERMAP

Customize



Nord

Koura

Municipality	13-Feb	14-Feb	15-Feb	Municipality	13-Feb	14-Feb	15-Feb	Municipality	13-Feb	14-Feb	15-Feb
Aaba	ML	M	M	Afsaddiq	ML	M	M	Ain Ekrine	M	M	M
Amioun	M	M	M	Anfeh	M	M	M	Badbhoun	M	M	M
Barghoun	M	M	M	Barsa	ML	M	M	Batroumine	ML	M	M
Bdebba	ML	M	M	Bechmizine	M	M	M	Bednayet El-Koura	ML	M	M
Bhabbouch El-Koura	ML	M	M	Bkeftine	ML	M	M	Bnehran	L	ML	M
Bqaiia El-Koura	ML	M	M	Bsarma	ML	M	M	Btaaboura	M	M	M
Bterram	ML	M	M	Btouratij	ML	M	M	Bziza	M	M	M
Dar Beechtar	M	M	M	Dar Chmezzine	M	M	M	Deddeh	ML	M	M
Deir El-Balamand	L	L	M	Fih	ML	M	M	Hraiche	M	M	M
Ijdaabrine	ML	M	M	Kaftoun	ML	M	M	Kefraya El-Koura	M	M	M
Kfarakka	ML	M	M	Kfarhata	ML	M	M	Kfarhazir	M	M	M
Kfarkahel	ML	M	M	Kfarsaroun	ML	M	M	Kosba	ML	M	M
Mejdel el-Koura	ML	ML	M	Nakhle	ML	M	M	Qalhat	L	L	M
Ras Masqa	ML	M	M	Rechdibbine	ML	M	M	Zakroun	M	ML	M
Zgharta El-Mtaouile	L	L	M								

Bcharre

Municipality	13-Feb	14-Feb	15-Feb	Municipality	13-Feb	14-Feb	15-Feb	Municipality	13-Feb	14-Feb	15-Feb
Aabdine	VL	ML	ML	Bane	VL	M	M	Barhelioun	VL	L	ML
Bazooune	VL	M	L	Becharre	VL	M	M	Beit Menzer	VL	ML	ML
Billa	VL	ML	ML	Blaouza	VL	M	M	Bqaa Kafra	VL	M	L
Bqerqacha	VL	M	L	Breissat	VL	ML	VL	Dimane	VL	L	L
Hadath El Jobbeh	VL	L	L	Hadchit	VL	ML	ML	Hasroun	VL	ML	L
Mazraat Aassaf	VL	L	L	Mazraat Bani Saab	VL	L	L	Mchaa El-Jobbeh	VL	M	L
Metrit	L	ML	M	Moghr El-Ahoual	VL	ML	ML	Ouadi Qannoubine	VL	VL	L
Qanat	VL	L	L	Qnayer	VL	L	L	Tourza	VL	L	ML

Batroun

Municipality	13-Feb	14-Feb	15-Feb	Municipality	13-Feb	14-Feb	15-Feb	Municipality	13-Feb	14-Feb	15-Feb
Aabrine	ML	M	M	Aalali	VL	L	ML	Aartiz	L	L	M
Abdelli	L	L	M	Ajdabra	L	ML	M	Assia	VL	L	L
Basbina	ML	M	M	Batroun	M	M	M	Bcheleh	VL	L	ML
Bechtoudar	VL	L	L	Beit Chlala	VL	L	L	Beit Kassab	L	L	ML
Bijdarfil	ML	M	M	Bqesmaya	L	ML	M	Chatine	VL	L	L
Chebtin	L	L	M	Chekka	M	M	M	Daael	VL	L	L
Dahr Abi Yaghi	L	L	M	Daraya El-Batroun	ML	M	M	Deir Billa	L	L	ML
Deir Kfifane	ML	ML	M	Deir Mar Youhanna EL	VL	L	L	Deir Mar Youssef Jra	L	L	M
Douma	VL	L	L	Douq	L	L	M	Eddeh El-Batroun	L	ML	M
Ftahat El-Batroun	L	L	ML	Ghouma	L	ML	M	Hadtoun	VL	L	ML
Hamat	ML	M	M	Harbouna	L	L	M	Hardine	VL	L	L
Helta	VL	L	ML	Hery	M	M	M	Jebbla	L	L	ML
Jrabta El-Batroun	L	ML	M	Jrane El-Batroun	ML	M	M	Kfar Aabida	ML	ML	M
Kfar Halda	VL	L	L	Kfarb Shlaimane	VL	L	L	Kfarhatna	L	L	M

Kfarhay	ML	M	M	Kfarhelos	L	ML	M	Krifane	ML	M	M
Kfour El Arabi	VL	L	L	Koubba	M	M	M	Kour	L	ML	M
Mar Mama	L	L	M	Masrah	L	L	M	Mehmarch	L	ML	M
Mrah Chdid	L	L	M	Mrah El Ziyat	L	ML	M	Mrah El-Hajj	VL	L	L
Nahle El-Batroun	VL	L	ML	Niha El-Batroun	VL	L	L	Oujh El-Hajjar	ML	M	M
Ouata Houb	VL	L	L	Qatnaaoun	ML	M	M	Racha	VL	L	ML
Rachana	L	L	M	Rachkida	ML	M	M	Ram El-Batroun	VL	L	L
Ras Nahhach	ML	M	M	Selaata	M	M	M	Sghar	L	ML	M
Smar Jbayl	L	ML	M	Sourat El-Batroun	L	L	M	Tannourine El-Faouqa	VL	M	L
Tannourine Et-Tahta	VL	L	L	Thoum	ML	ML	M	Toula El-Batroun	L	L	M
Zan	L	L	M								

Zgharta

Municipality	13-Feb	14-Feb	15-Feb	Municipality	13-Feb	14-Feb	15-Feb	Municipality	13-Feb	14-Feb	15-Feb
Aachach	ML	M	M	Aalma	ML	M	M	Aarde	ML	M	M
Aintourine	VL	ML	M	Arabet Qozhaya	VL	L	L	Arde	ML	M	M
Arjis	L	M	M	Asnoun	ML	M	M	Ayto	VL	L	ML
Basloukit	VL	M	M	Bchannine	L	M	M	Besebeel	ML	M	M
Bhairret Toula	VL	L	ML	Bnachee	L	ML	M	Boussit	M	M	M
Danha	ML	M	M	Daraiya Zgharta	L	M	M	Deir Jdeide	ML	M	M
Ehden	VL	ML	M	Halan	ML	M	M	Hariq Zgharta	ML	M	M
Houakir	L	ML	M	Hraiqis	L	M	M	laal	L	M	M
Ijbaa	VL	ML	M	Karm Saddeh	VL	L	L	Kfarchakhna	ML	M	M
Kfardlaqous	ML	M	M	Kfarfou	VL	M	M	Kfarhata Zgharta	ML	M	M
Kfarhoura	L	M	M	Kfarsghab	VL	ML	M	Kfaryachit	ML	M	M
Kfarzaina	ML	M	M	Khaldiye	ML	M	M	Mazraat Ajbeaa	ML	M	M
Mazraat Et-Teffah	VL	L	M	Mazraat Jneid	ML	M	M	Mejdlaia Zgharta	ML	M	M
Merh Kfarsghab	L	ML	M	Miryata	ML	M	M	Miziara	VL	L	ML
Mzraat Kefraya	L	M	M	Qorah Bach	ML	M	M	Rachiine	ML	M	M
Ras Kifa	L	ML	M	Sakhra	ML	M	M	Sebhel Zgharta	VL	ML	M
Serhel	VL	L	L	Tallet Zgharta	ML	M	M	Toula Zgharta	VL	L	ML
Zgharta	ML	M	M								

Minieh-Denniye

Municipality	13-Feb	14-Feb	15-Feb	Municipality	13-Feb	14-Feb	15-Feb	Municipality	13-Feb	14-Feb	15-Feb
Aasaymout	L	L	M	Aaymar	VL	ML	L	Aazki	L	ML	ML
Ain El-Tineh-Miniyeh	VL	L	L	Assoun	VL	ML	L	Bakhaaoun	VL	ML	L
Bchennata	VL	M	M	Bechehhara	L	L	M	Beddawi	ML	M	M
Behouaita	VL	L	L	Beit El Foqss	VL	L	L	Beit Haouik	VL	ML	ML
Beit Zoud	VL	L	L	Bekaasafrine	L	M	M	Borj El Yahoudiyeh	L	M	M
Bqarsouna	VL	L	L	Btermaz	VL	L	L	Debaael	L	L	L
Deir Ammar	L	M	M	Deir Nbouh	L	ML	M	Haouaret-Miniyeh	VL	ML	ML
Haql el Azimeh	VL	L	L	Harf El Siyad	VL	L	L	Hazmiye-Miniyeh	VL	L	L
Izal	L	ML	ML	Jarjour	L	L	M	Jayroun	VL	L	M
Kahf El-Malloul	L	L	ML	Karm El-Moher	VL	ML	ML	Kfar Binine	VL	ML	M
Kfarchalane	VL	ML	L	Kfarhabou	L	M	ML	Kharroub-Miniyeh	VL	M	ML
Mazraat El-Kreme	L	L	ML	Mazraat Ketrane	VL	L	L	Merkebta	L	M	M

Minyeh	L	M	M	Mrah El Sfirat	VL	L	L	Mrah Sraj	VL	L	L
Mrebbine	L	ML	M	Nabi Youcheaa	L	M	M	Nemrine	VL	ML	ML
Qarhaiya	L	ML	M	Qarne	L	L	M	Qarsita	VL	L	L
Qattineh-Miniyeh	VL	L	L	Qemmamine	VL	L	M	Qraine	VL	L	L
Raouda-Aadoua	L	M	M	Rihaniyet-Miniyeh	L	M	M	Sfireh	VL	L	ML
Sir Ed-Danniyeh	VL	L	L	Tarane	VL	L	ML	Terbol-Miniyeh	ML	M	M
Zaghartagrhrine	L	ML	M	Zouq Bhannine	L	M	M				

Nabatiye

Nabatiye

Municipality	13-Feb	14-Feb	15-Feb	Municipality	13-Feb	14-Feb	15-Feb	Municipality	13-Feb	14-Feb	15-Feb
Aabba	L	ML	M	Aazzi	L	ML	M	Adchit El-Chqif	L	ML	M
Ain Bou Swar	L	ML	M	Ain Kana	L	ML	M	Ali El-Taher	L	ML	M
Ansar	ML	M	M	Arab Salim	L	ML	M	Arnoun	L	M	M
Bfaroue	L	ML	M	Breyqaah	L	ML	M	Charqiyeh	L	ML	M
Choukine	L	ML	M	Deir El Zahrani	L	ML	M	Doueir El-Nabatiyeh	L	ML	M
Habbouch El-Nabatiye	L	ML	M	Hamra El-Nabatiyeh	L	M	M	Harouf El-Nabatiyeh	L	ML	M
Hmaile	L	ML	M	Houmin El Faouqa	L	ML	M	Houmin El Tahta	ML	ML	M
Jarjough	L	ML	M	Jbaah El-Nabatiyeh	L	L	M	Jebchit	L	ML	M
Kfar Djal El-Nabatiy	L	ML	M	Kfar Remmane	L	ML	M	Kfar Sir	L	ML	M
Kfar Tebnit	L	M	M	Kfarfila	L	ML	M	Kfour El-Nabatieh	L	ML	M
Mayfadoun	L	M	M	Mazraat Bsaffour	L	ML	M	Mazraat Chalbaal	L	ML	M
Mazraat Dmoul	L	M	M	Mazraat El Khreibeh	L	ML	M	Mazraat El-Bayad El-	L	ML	M
Mazraat Kfarjaouz	L	ML	M	Mazraat Qalaat Meiss	L	ML	M	Nabatiyeh El-Fawka	L	ML	M
Nabatiyeh Et-Tahta	L	ML	M	Namiriyeh	L	ML	M	Qaaqaaiyet El Jisr	L	ML	M
Qossaibeh El-Nabatiy	L	ML	M	Roumine	L	ML	M	Sarba El-Nabatieh	L	ML	M
Sir El-Gharbiyeh	L	M	M	Toul	L	ML	M	Yehmor El-Nabatiyeh	L	M	M
Zaoutar El Charkiyeh	L	M	M	Zaoutar El-Gharbiyeh	L	ML	M	Zebdine El-Nabatiyeh	L	ML	M
Zefta	L	ML	M								

Hasbaiya

Municipality	13-Feb	14-Feb	15-Feb	Municipality	13-Feb	14-Feb	15-Feb	Municipality	13-Feb	14-Feb	15-Feb
Aain Jarfa	VL	VL	L	Abou Qamha	L	ML	M	Ain Qania	VL	VL	L
Bourghos	L	ML	M	Chebaa	L	L	ML	Chouaya Hasbaya	VL	VL	L
Dellafeh	L	ML	M	Fardiss Hasbaiya	L	L	M	Hasbaya	L	L	ML
Hbariyeh	VL	L	L	Kaoukaba Hasbaiya	L	ML	M	Kfar Chouba	L	L	M
Kfar Hamam	L	L	ML	Kfeir El-Zait	VL	VL	L	Khalwat Hasbaya	VL	VL	L
Khreibet Hasbaiya	L	M	M	Majidiyeh Hasbaiya	L	ML	M	Marj Ez-Zhour (Haouc	L	VL	L
Meri	L	M	M	Mimass	VL	VL	ML	Rachaiya El-Fokhar	L	L	M
Salaiyeb	L	M	M								

Marjayoun

Municipality	13-Feb	14-Feb	15-Feb	Municipality	13-Feb	14-Feb	15-Feb	Municipality	13-Feb	14-Feb	15-Feb
Aalmane Marjaayoun	L	ML	M	Aamra	L	M	M	Adayseh Marjaayoun	ML	M	M
Adchit El-Koussair	L	M	M	Ain Aarab Marjaayoun	L	M	M	Bani Haiyann	L	M	M
Blatt Marjaayoun	L	ML	M	Blida	ML	ML	M	Borj El-Moulouk	L	M	M

Boueyda Marjaayoun	L	ML	M	Deir Mimass	L	ML	M	Deir Siriane	L	M	M
Dibbine	L	ML	M	Ebel El Saqi	L	ML	M	Houla	ML	M	M
Houra	L	M	M	Kfar Kila	L	M	M	Khiam Marjaayoun	L	M	M
Klayaa	L	M	M	Majdel Selem	L	M	M	Marjaayoun	L	M	M
Markaba	ML	M	M	Mays El-Jabal	ML	M	M	Mazraat Doumiat	L	M	M
Mazraat Sarada	L	M	M	Mhaibib	ML	M	M	Qabrikha	L	ML	M
Qantara	L	ML	M	Rab El-Thalathine	L	M	M	Saouaneh Marjayoun	L	ML	M
Taloussa	L	M	M	Taybeh Matjaayoun	L	M	M	Touline	L	ML	M

Bent Jbail

Municipality	13-Feb	14-Feb	15-Feb	Municipality	13-Feb	14-Feb	15-Feb	Municipality	13-Feb	14-Feb	15-Feb
Ain-Ebel	L	ML	M	Aitaroun	ML	ML	M	Aynata Bint Jbeil	L	ML	M
Ayta El-Chaeb	L	M	M	Ayta El-Jabal	L	ML	M	Beit Lif	L	M	M
Beit Yahoun	L	ML	M	Bint Jbeil	L	ML	M	Borj Qalaway	L	ML	M
Braachit	L	ML	M	Chakra	ML	M	M	Debel	L	ML	M
Deir Antar	L	M	M	Froun	L	ML	M	Ghandouriyeh Bint Jb	L	ML	M
Hanine	L	ML	M	Hariss	L	M	M	Hdatha	L	ML	M
Jmeyjmeh	L	ML	M	Kafra Bint Jbeil	L	M	M	Kfar Dounine	L	ML	M
Khirbet Selm	L	ML	M	Kounine	L	ML	M	Maroun El Ras	L	ML	M
Qalaway	L	ML	M	Qaouzah	L	M	M	Qatmoun	L	M	M
Ramya Bint Jbeil	L	M	M	Rchaf	L	M	M	Rmeich	L	M	M
Safad Al Battikh	L	ML	M	Salhaneh	L	M	M	Serbine	L	M	M
Sultanieh Bint Jbeil	L	ML	M	Tibnine	L	ML	M	Tiri	L	ML	M
Yaroun	L	ML	M	Yater	L	M	M				

Mont Liban

Jbail

Municipality	13-Feb	14-Feb	15-Feb	Municipality	13-Feb	14-Feb	15-Feb	Municipality	13-Feb	14-Feb	15-Feb
Aabeydat	L	L	M	Aalita	VL	L	ML	Aamchit	M	M	M
Aarab El-Lahib	VL	M	VL	Aarasta	VL	L	L	Adonis Jbeil	VL	L	M
Afqa Jbeil	VL	L	L	Ain El Delbeh Jbeil	VL	L	ML	Ain El-Ghouyba	VL	L	L
Ain Jrain	VL	L	L	Ain Kfah	L	ML	M	Almat El Chemaliyat	VL	L	L
Almat El-Jenoubiya	VL	L	L	Aqoura	L	M	ML	Bayzoun	L	L	M
Bchille Jbeil	VL	L	M	Bechtlida	VL	L	ML	Behdaydat	L	ML	M
Beit Habbaq	L	ML	M	Bejjeh	L	ML	M	Bekhaaz	ML	ML	M
Berbara Jbeil	M	ML	M	Bintael	L	L	M	Birket Hjoula	L	L	M
Blatt Jbeil	L	L	M	Boulhos	VL	L	L	Breyj Jbeil	VL	L	ML
Chamat	ML	M	M	Chikhane	M	ML	M	Chmout	L	L	M
Eddeh Jbeil	L	ML	M	Ehmej	VL	L	L	Fatre	VL	L	M
Ferhet	L	L	M	Fghal	L	L	M	Frat	VL	VL	L
Ghabat	VL	L	ML	Ghalboun	L	ML	M	Gharzouz	ML	ML	M
Ghofrine	ML	ML	M	Habil	L	L	M	Halate	L	L	M
Haqel	L	L	M	Hbaline	L	ML	M	Hboub	L	L	M
Hdeine	VL	L	ML	Hema Er-Rehban	VL	ML	ML	Hema Mar Maroun Aann	VL	VL	ML
Hjoula	L	L	ML	Hosrayel	M	ML	M	Hsarat	L	ML	M

Hsoun	L	L	M	Jaj	VL	L	ML	Janne	VL	VL	L
Jbeil	ML	M	M	Jeddeyel Jbeil	M	ML	M	Jlisse	VL	L	ML
Jouret El-Qattine	VL	L	M	Kfar Baal Annaya	VL	L	M	Kfar Kidde	ML	ML	M
Kfar Kouas	VL	L	ML	Kfar Mashoun	L	M	M	Kfoun	L	L	M
Kharbe Jbeil	L	ML	M	Laqlouq	VL	ML	ML	Lassa	VL	L	L
Lehfed	VL	L	L	Maad	ML	ML	M	Mar Sarkis	VL	L	ML
Mastita	ML	ML	M	Mayfouq	VL	L	ML	Mazraat El Siyad	VL	L	ML
Mazraat El-Maaden	VL	VL	L	Mechane	VL	L	M	Mechmech Jbeil	VL	L	L
Mehrin	L	ML	M	Mejdel El-Akoura	VL	L	L	Mghayreh Jbeil	VL	L	ML
Mounsef	M	ML	M	Nahr Ibrahim	ML	ML	M	Qahmez	VL	L	L
Qartaba	VL	L	L	Qartaboun	M	M	M	Qattara Jbeil	VL	L	L
Qorqraya	VL	VL	L	Ramout	ML	ML	M	Ras Osta	VL	L	ML
Rihane Jbeil	M	ML	M	Sakiet El-Khayt	L	L	M	Saqi Richmaya	VL	L	L
Sebrine	VL	L	ML	Seraita	VL	L	L	Souane Jbeil	VL	L	L
Tadmor	VL	ML	ML	Tartej	VL	ML	ML	Torzaiya	VL	L	M
Yanouh Jbeil	VL	L	ML	Zibidine Jbeil	VL	L	M				

El Metn

Municipality	13-Feb	14-Feb	15-Feb	Municipality	13-Feb	14-Feb	15-Feb	Municipality	13-Feb	14-Feb	15-Feb
Aain El-Qabu	VL	VL	L	Aain El-Qach	VL	VL	L	Aain El-Teffaha	VL	VL	L
Aain el-Safssaf El-M	VL	VL	L	Abou Mizane	VL	VL	L	Ain Aar	L	ML	M
Ain Alaq	L	ML	M	Ain El-Kharroube	VL	VL	L	Ain El-Sendianeh	VL	VL	L
Ain El-Zeitoune	VL	VL	L	Ain Saadeh	L	ML	M	Aintoura El-Matn	VL	VL	ML
Amaret Chalhoub	L	M	M	Antelias	L	M	M	Atchaneh	L	ML	M
Ayroun	VL	VL	L	Baabdat	VL	L	L	Baouchariyeh	ML	M	M
Baskinta	VL	VL	L	Beit Chabab	VL	L	L	Beit El-Chaar	L	M	M
Beit El-Kekko	L	M	M	Beit Mery	L	ML	M	Bhersaf	VL	L	L
Bikfaya	VL	VL	L	Biyakout	L	M	M	Bnabil	VL	VL	L
Bourj Hammoud	ML	M	M	Bqennaya	L	ML	M	Broummana El-Matn	L	ML	M
Bsalim	L	ML	M	Bsifrine	VL	VL	L	Bteghrine	VL	VL	L
Chaouiye	L	ML	M	Chouaya El-Matn	VL	VL	L	Choueir	VL	VL	L
Chrine	VL	VL	L	Dahr El Sawan El-Mat	L	L	ML	Daychouniyeh	L	ML	M
Dbayeh	L	M	M	Deir Chamra	VL	VL	L	Deir Mar Abda el Mch	L	L	M
Deir Mar Roukouz	ML	M	M	Deir Tamiche	L	ML	M	Dik El-Mehdi	L	ML	M
Dikwaneh	ML	M	M	Douar El-Matn	VL	VL	L	Fanar	L	ML	M
Fraike	L	L	M	Haret El-Ballaneh	L	ML	M	Hbous	L	ML	M
Himlaya	VL	VL	L	Jal El Did	L	M	M	Jdeideh El-Metn	L	M	M
Jouar El-Matn	VL	VL	L	Jouret El-Ballout	L	ML	M	Kaaqour	VL	VL	L
Kfar Aaqab	VL	VL	L	Kfertay El-Matn	VL	L	L	Khenchara	VL	VL	L
Khillet El-Mtain	VL	VL	L	Konnabat Broummana	L	ML	M	Konnabat Salima	VL	VL	L
Machraah El-Matn	VL	VL	L	Majdel Tarchich	VL	VL	ML	Majzoub	L	M	M
Mansouriyeh El-Metn	L	M	M	Mar Boutros Karm Et-	VL	VL	L	Mar Chaya et Mzekke	L	ML	M
Mar Moussa Ed-Douar	VL	VL	L	Marjaba	VL	VL	L	Masqa	L	L	M
Mayasse	VL	VL	L	Mazraat Deir Aoukar	L	ML	M	Mazraat El-Hadirat	L	ML	M
Mazraat Yachouh	L	M	M	Mchikha	VL	VL	L	Menqlet Mezher	L	M	M
Mhayseh Matn	VL	VL	L	Mkalles	ML	M	M	Mrouj	VL	VL	L

Mtain	L	L	ML	Mtayleb	L	ML	M	Nabay	L	ML	M
Naccache	L	ML	M	Ouadi Chahine	VL	VL	L	Ouadi El-Karm El-Mat	VL	L	L
Ouata El-Mrouj	VL	VL	L	Ouyoun El-Matn	VL	L	M	Qornet Chehwan	L	ML	M
Qornet El-Hamra	L	L	M	Roumieh	L	ML	M	Sfeilet Bikfaya	VL	VL	L
Sinn El-Fil	ML	M	M	Zabbougha	VL	L	L	Zalqa	L	M	M
Zarououn	VL	VL	L	Zekrite	L	ML	M	Zighrine El-Matn	VL	VL	L
Zouk El-Khrab	L	M	M								

Chouf

Municipality	13-Feb	14-Feb	15-Feb	Municipality	13-Feb	14-Feb	15-Feb	Municipality	13-Feb	14-Feb	15-Feb
Aalmane El-Chouf	ML	ML	M	Aammq El-Chouf	L	VL	L	Ain Ouzein	L	VL	L
Ain Qani	L	VL	L	Ain Zhalta	L	VL	L	Ainbal	L	L	M
Amatour	L	VL	ML	Anout	L	L	M	Atrine	L	L	L
Baadarane	L	L	ML	Baaqline	L	L	M	Baasir	ML	ML	M
Barja	ML	ML	M	Barouk	L	VL	L	Bater	L	L	ML
Batloun	L	VL	ML	Bayqoun	L	L	ML	Bchetfine	L	L	M
Beiteddine	L	VL	L	Benouati Ech-Chouf	L	L	M	Berjein	L	L	M
Bireh et Mtalleh	L	VL	ML	Biret El-Chouf	L	VL	ML	Bkechtine Ouel Mchei	L	L	M
Bkifa El-Chouf	L	L	M	Botme	L	VL	L	Bqaiaa Ech-Chouf	L	L	M
Bsaba El-Chouf	L	L	M	Chammis El-Chouf	L	ML	M	Chehim	L	L	M
Chemaarine	L	L	M	Chourit	L	ML	L	Daher El-Chouf	L	L	M
Dalhoun	L	L	M	Damour	ML	ML	M	Daraya El-Chouf	L	L	M
Deir El-Moukhalles	L	L	M	Deir Baba	L	L	M	Deir Dourit	L	L	M
Deir El-Qamar	L	L	ML	Deir Kouche	L	L	ML	Dibbieh	L	L	M
Dmit	L	L	M	Fouara Jaafar	L	VL	ML	Fraidis El-Chouf	L	VL	ML
Ghabet Jaafar	L	L	M	Gharife	L	L	M	Haret Jandal	L	L	ML
Hasrout	L	L	M	Jadra	ML	ML	M	Jahlieh	L	L	M
Jbeih El-Chouf	L	L	ML	Jdeidet El-Chouf	L	VL	ML	Jiyeh	ML	ML	M
Jleilyeh	L	L	M	Jmailiyeh	ML	ML	M	Joun	L	L	M
Kahlounie El-Chouf	L	VL	ML	Ketermaya	ML	ML	M	Kfar Faqoud	L	L	M
Kfar Hamal	L	L	M	Kfar Him	L	ML	M	Kfar Katra	L	VL	L
Kfar Niss	L	L	ML	Kfar hay	L	ML	M	Kfarnabrakh	L	VL	ML
Khirbet Bisri	L	L	M	Knayse El-Chouf	VL	VL	L	Maaniyeh	ML	ML	M
Maasser Beiteddine	L	VL	L	Maasser El-Chouf	L	VL	L	Majdalouna	ML	ML	M
Majdel El-Meouch	L	L	ML	Mazboud	L	L	M	Mazmoura	L	L	M
Mazraat El Chouf	L	L	ML	Mazraat El Daher	L	L	M	Mazraat El-Douair	L	VL	L
Mechref	L	L	M	Mghairie	L	ML	M	Mghayrie El-Chouf	L	L	M
Moukhtara	L	VL	L	Mrusti	L	L	ML	Mtolle	L	L	M
Naameh	ML	M	M	Niha El-Chouf	L	L	ML	Ouadi Abou Youssef	VL	L	ML
Ouadi Ed-Deir	L	ML	M	Ouadi El-Sit	L	VL	ML	Ouadi bnehlay	L	L	M
Qraibeh	L	L	L	Qreiaa	VL	L	ML	Rmayle El-Chouf	ML	ML	M
Semqaniyeh	L	VL	ML	Sibline	ML	ML	M	Sirjbeil	L	L	M
Warhanieh	L	VL	ML	Werdaniyeh	ML	ML	M	Zaarourieh	L	L	M

Baabda

Municipality	13-Feb	14-Feb	15-Feb	Municipality	13-Feb	14-Feb	15-Feb	Municipality	13-Feb	14-Feb	15-Feb
Abadiyeh	L	L	M	Ain Mouaffaq	L	ML	M	Araiya	L	L	M

Arbaniyeh	VL	VL	L	Arsoun	VL	VL	L	Baabda	L	M	M
Baalchmey	L	L	M	Bmaryam	L	VL	L	Bourj El-Brajneh	L	ML	M
Boutchay	L	M	M	Bsaba Baabda	L	M	M	Btekhney	VL	VL	L
Btibyat	VL	VL	L	Bzbedine	VL	VL	L	Chbeniyeh	L	VL	ML
Chiyah	ML	M	M	Chmeisset Baabda	VL	VL	L	Chouit	L	L	M
Deir El-harf	VL	VL	L	Deir Khouna	L	L	ML	Dlaybeh	VL	VL	L
Falougha	L	L	ML	Furn El-Chebbak	ML	M	M	Hadath Beyrouth	L	M	M
Halaliyeh Baabda	L	L	M	Hammana	L	VL	ML	Haret El Sett	L	ML	M
Haret Hamze	L	L	ML	Haret Hreik	ML	M	M	Hasbaiya El-Metn	VL	VL	L
Jouar El-Hoz	VL	VL	L	Jouret Arsoun	VL	VL	L	Kfar Chima	L	M	M
Kfar Selouane	VL	VL	L	Khalouat Baabda	L	VL	ML	Kneisset Baabda	VL	L	L
Laylakeh	L	M	M	Louayzeh Baabda	L	L	M	Merdache	L	M	M
Mzairaa Baabda	L	L	M	Ouadi Chahrour El Ol	L	ML	M	Ouadi Chahrour El So	L	M	M
Qalaa Baabda	L	VL	L	Qhraybe Baabda	L	VL	L	Qobbayaa	L	VL	L
Qornayel	VL	VL	L	Qortada	VL	L	M	Qrayeh Baabda	L	VL	L
Qsaibeh Baabda	L	L	M	Qtale Baabda	L	VL	L	Ras El Metn	L	L	ML
Ras El-Haref	L	L	ML	Rouayset El-Ballout	L	L	M	Salima Baabda	VL	VL	L
Tahouitat El Ghadir	L	M	M	Tarchich	VL	VL	L	Zandouqa	VL	L	M

Aley

Municipality	13-Feb	14-Feb	15-Feb	Municipality	13-Feb	14-Feb	15-Feb	Municipality	13-Feb	14-Feb	15-Feb
Abey	L	M	M	Aghmid	L	VL	L	Ain Dara	L	L	ML
Ain Drafil	L	M	M	Ain El Halazoun	L	L	M	Ain El-Rmmaneh	VL	ML	M
Ain Jedideh	L	ML	M	Ain Ksour	L	M	M	Ain Onoub	L	M	M
Ain Traz	L	L	ML	Ainab	L	M	M	Aley	L	ML	M
Aramoun	L	M	M	Aytat	L	M	M	Azouniyeh	L	VL	ML
Baawerta	L	M	M	Badghan Oua Wadi Bad	L	L	ML	Bassatine	L	M	M
Bayssour	L	ML	M	Bchamoun	L	M	M	Bdadoun	L	ML	M
Behouara	L	L	M	Bennay	L	ML	M	Bhamdoun El-Dayaa	L	ML	M
Bhamdoun El-Mhatta	L	L	M	Bkhechthey	L	ML	M	Bleibel	L	M	M
Bmaknine	L	ML	M	Bmehray	L	L	L	Bouzrid	VL	ML	ML
Bserrine	L	L	M	Bsous	VL	ML	M	Btalloun	L	ML	M
Btater	L	ML	M	Chanay	L	L	M	Charoun	L	VL	ML
Chartoun	L	ML	M	Chemlane	L	M	M	Choueifat El-Aamrous	L	M	M
Choueifat El-Oumara	L	M	M	Choueifat El-Quoubbe	L	M	M	Dakkoun	L	ML	M
Deir Qoubel	L	M	M	Dfoun	L	M	M	Douair El Remmaneh	VL	ML	M
Ghaboun	L	L	M	Habramoun	L	L	M	Homs Oua Hama	L	L	M
Houmal	L	M	M	Jisr El Qadi	L	L	M	Kehaleh	L	ML	M
Keyfoun	L	M	M	Kfar Aamey	L	ML	M	Kommatyeh	L	ML	M
Maasrati	L	L	M	Majdel Baana	L	L	ML	Mansourieh et Ain El	L	ML	M
Mazraat El-Nahr	L	L	M	Mchakhte	L	VL	L	Mecherfeh	L	L	M
Mejdlaya	L	L	M	Mrayjat	L	VL	ML	Ramliyah	L	L	ML
Rechmaya	L	L	ML	Rejmeh	L	ML	M	Remhala	L	ML	M
Rouayset El Neemane	L	ML	M	Saoufar	L	VL	ML	Selfaya	VL	L	ML
Sirhmoul	L	M	M	Souq El Ghareb	L	ML	M	Taazanieh	L	ML	M

Kesrouane

Municipality	13-Feb	14-Feb	15-Feb	Municipality	13-Feb	14-Feb	15-Feb	Municipality	13-Feb	14-Feb	15-Feb
Achkout	VL	L	L	Adma Oua Dafneh	L	ML	M	Ain Ed-Delbe Kesroua	VL	VL	L
Ain El-Rihane	L	L	M	Aintoura Kesrouane	L	ML	M	Ajaltoun	VL	L	L
Akaybeh Kesrouane	ML	M	M	Aramoun Kesrouane	VL	L	L	Azra ouel Ozor	VL	L	M
Ballouneh	VL	L	L	Batha	VL	L	ML	Bekaatat Achkout	VL	L	ML
Bekaatat Kanaan	VL	L	L	Bizhel	VL	L	M	Bouar	L	ML	M
Bqaatouta	VL	L	L	Bqaq Ed-Dine	ML	ML	M	Bzommar	VL	L	L
Chahtoul	VL	L	L	Chnaniir	VL	L	L	Chouan	VL	L	L
Daraya Kesrouane	VL	L	L	Darououn	L	L	M	Deir Baqlouch	L	L	M
Diebta	VL	L	L	Eghbeh	VL	VL	L	Faraya	VL	L	L
Fatka	L	L	ML	Feytroun	VL	L	L	Ghazir	L	L	ML
Ghbaleh Kesrouane	VL	L	M	Ghedrass	VL	L	ML	Ghosta	VL	L	L
Ghyneh	L	L	ML	Harharaya w Kattine	VL	L	L	Harissa Kesrouane	L	L	M
Hayata	VL	L	L	Hosein	VL	L	ML	Hrajel	VL	L	L
Jdeideh Ghazir	VL	L	L	Jeita	L	L	M	Jounieh Ghadir	L	ML	M
Jounieh Haret Sakhr	L	M	M	Jounieh Salel Alma	L	ML	M	Jounieh Sarba	ML	M	M
Jouret Bedrane	L	L	M	Jouret Mhad	VL	L	L	Jouret Termos	VL	L	ML
Kfar Debiane	VL	L	L	Kfar Tay Kesrouane	VL	VL	L	Kfar Yassine	ML	M	M
Kfour Kesrouane	VL	L	L	Kharayeb Nahr Ibrahi	L	L	M	Klayaat Kesrouane	VL	L	L
Maarab	VL	L	L	Maaysra Kesrouane	L	L	M	Mayrouba	VL	L	L
Mazraat Er-Ras	L	ML	M	Mazraat Mrah El-Mir	VL	L	L	Mchaa El Ftouh	VL	ML	ML
Mchaa Faraya	VL	L	L	Mchaa Kfar Dibiane	VL	L	L	Mghaer	VL	VL	L
Mradiyah	VL	L	M	Nahr Ed-Dahab	VL	L	L	Nammoura Kesrouane	L	L	M
Ouata El Jaouz	VL	L	L	Ouata Sillam	ML	M	M	Raachine	VL	L	L
Rayfoun	VL	L	L	Safra Kesrouane	L	ML	M	Shayle Kesrouane	L	L	M
Tabarja	L	ML	M	Yahchouch	VL	L	M	Zaaytreh	VL	L	M
Zeytoun	L	L	M	Zouk Mikael	ML	M	M	Zouk Mosbeh	L	M	M

Baalbek_Hermel

Baalbek

Municipality	13-Feb	14-Feb	15-Feb	Municipality	13-Feb	14-Feb	15-Feb	Municipality	13-Feb	14-Feb	15-Feb
Aadous	L	M	M	Aamchki	VL	L	VL	Aarsal	L	ML	L
Ain Baalbek	L	M	L	Ain Bourday	VL	L	VL	Ain El-Benye	L	VL	VL
Ain El-Jaouz Baalbek	L	L	L	Ain El-Siya Chadoura	VL	L	VL	Al Khodr Baalbek	VL	L	L
Al Nabi Chit	VL	L	L	Aynata Baalbek	L	M	ML	Baalbek	VL	L	L
Bachwat	L	ML	ML	Barqa	L	L	ML	Bednayel Baalbak	L	ML	M
Beit Chama	L	ML	M	Bijjaje	M	M	ML	Bouday	L	ML	M
Brital	L	L	L	Btadi	L	M	M	Chaat	ML	M	ML
Chaibe	L	L	VL	Chlifa	ML	M	M	Chmestar	L	M	M
Dar El-Oussa	L	ML	M	Deir El-Ahmar	L	M	M	Deir Mar Maroun Baal	L	L	ML
Douris	L	L	L	Fakiha	L	ML	ML	Hadath Baalbek	L	M	M
Ham	VL	VL	VL	Haour Taala	L	L	L	Hizzine	ML	M	M
Hlebta	L	L	ML	Hosh Barada	ML	M	M	Hosh El Dahab	ML	M	M
Hosh El Snid	L	L	L	Hosh El-Nabi	L	L	ML	Hosh El-Rafiq	L	ML	M
Hosh Tal Safiya	ML	M	M	Hrebta	ML	M	M	laat	L	M	ML

Jebaa	L	M	M	Jenta	VL	L	L	Kfar Dabach	L	M	M
Kfar Dane	L	M	M	Khraibeh El-Hermel	L	M	M	Khreibet Baalbek	VL	L	L
Kneisset Baalbek	L	M	ML	Labueh	M	M	ML	Maarboun	VL	VL	VL
Majdaloun	ML	M	M	Maqneh	L	M	ML	Mazraat Beit Mcheik	L	M	M
Misraya	L	ML	M	Moqraq	M	M	ML	Nabha El-Damdoum	L	M	M
Nabi Chbay	VL	VL	VL	Nabi Osman	L	M	ML	Nahleh baalbek	L	L	L
Ouadi El-Oss	L	ML	ML	Qaa Baayoun	L	ML	ML	Qaa Jouar Maqiye	VL	ML	M
Qaa Ouadi El-Khanzir	L	ML	ML	Qah Baalbek	L	ML	ML	Qarha Baalbek	M	M	M
Qsarnaba	L	ML	M	Ram Baalbek	ML	M	M	Ras Baalbek El Sahl	L	ML	ML
Ras Baalbek El-Charq	L	ML	ML	Riha	ML	M	ML	Saaide	ML	M	M
Sbouba	M	M	ML	Seriine El-Tahta	L	L	ML	Slouqi	L	ML	M
Taiba Baalbek	L	ML	ML	Talia	L	L	ML	Taraiya	L	M	M
Temnin El Fawqa	L	ML	M	Temnin El-Tahta	L	ML	M	Tfail	L	L	L
Yahfoufa	VL	L	L	Yammouneh	L	M	M	Younine	L	L	L
Zboud	M	M	ML								

Hermel

Municipality	13-Feb	14-Feb	15-Feb	Municipality	13-Feb	14-Feb	15-Feb	Municipality	13-Feb	14-Feb	15-Feb
Charbine El-Hermel	VL	L	L	Hermel Jbab	L	ML	L	Hermel	L	ML	ML
Maaysra El-Hermel	L	L	ML	Michaa Mrajhine	L	L	L	Ouadi Faara	L	L	ML
Ras Baalbek - Ouadi	M	ML	ML	Ras Baalbek El Gharb	L	ML	ML	Zighrine	L	L	L

Akkar

Akkar

Municipality	13-Feb	14-Feb	15-Feb	Municipality	13-Feb	14-Feb	15-Feb	Municipality	13-Feb	14-Feb	15-Feb
Aain Tinta	L	M	M	Aaiyat	L	M	M	Aakkar El-Aatiqa	L	L	M
Aamar Akkar	L	M	M	Aamar El Baykat	L	M	M	Aamayer	VL	M	M
Aamriyet Akkar	L	M	M	Aandqet	VL	ML	ML	Aarmeh	ML	M	M
Aarqa	ML	M	MH	Aawaynat	VL	M	M	Aayoun Akkar	L	M	M
Abboudiye	M	M	MH	Ain El-Zeit	L	M	M	Ain Yaaqoub	L	L	M
Akroum	VL	ML	L	Aridet Cheikh Zennad	M	MH	H	Baldeh w Mazraat Bal	L	M	MH
Barcha	M	M	MH	Bardeh	L	M	M	Bebnine	L	M	M
Beino	L	M	M	Beit Ayoub	L	M	M	Beit El-Haouch	L	M	M
Beit Mellat	L	M	M	Beit Younes	L	ML	ML	Berbara Akkar	L	M	M
Berqayel	L	M	M	Bezbina	L	L	L	Bireh Akkar	L	M	M
Borj	L	M	M	Bqerezla	L	M	M	Bzal	L	L	M
Chane	L	L	M	Chaqdouf	L	M	M	Charbila	L	M	MH
Cheikh Mohammad	ML	M	MH	Cheikh Taba Es-Sahl	ML	M	MH	Cheikh Taba	L	M	MH
Cheikh Zennad	ML	M	MH	Cheikhlar	VL	M	M	Chir Hmairine	ML	M	MH
Daghle	L	M	M	Dahr Laissine	L	M	M	Darine	ML	M	MH
Dawra	L	M	M	Dawsa w Baghdadi	L	M	M	Dayret Nahr El-Kabir	L	M	M
Deir Dalloum	L	M	M	Deir Jennine	L	M	M	Denbou	L	L	M
Dibbabiye	L	M	M	Douair Aadwiyeh	L	M	M	Fassikine	L	M	M
Fnaydek	L	L	L	Fraydes Akkar	L	M	M	Ghazayle	ML	M	MH
Habchit	L	L	M	Hakour	L	M	M	Halba	ML	M	MH

Haouchab	ML	M	MH	Hayssat	ML	M	MH	Haytla	ML	M	MH
Hayzouq	L	M	M	Hedd	L	M	MH	Hmaira Aakkar	L	M	M
Hmaiss Aakkar	ML	M	MH	Hnaider	L	M	M	Hokr Ed-Dahri	M	MH	MH
Hokr Etti	ML	M	MH	Hokr Jouret Srar	M	M	MH	Houaich	L	ML	M
Hrar	L	ML	M	Idbil	L	M	M	llat	L	M	M
Janine	M	M	MH	Jdeidet El-Joumeh	ML	M	MH	Jdeidet El-Kaiteh	L	M	M
Jebrayel	L	M	M	Kafr	L	ML	M	Kafr	L	M	M
Karm Asfour	L	M	M	Kfar Melki Aakkar	ML	M	MH	Kfar Noun	L	M	M
Kfarharra	ML	M	MH	Khalsa	L	M	M	Kharnoubet Aakkar	M	M	MH
Khirbet Daoud Aakkar	L	M	M	Khirbet El Remmane	VL	M	M	Khirbet Shar	L	M	M
Khoreybet El-Jindi	ML	M	MH	Khreibet Aakkar	L	ML	M	Kneisset Aakkar	ML	M	MH
Kneisset Hnaider	L	M	M	Knisse	ML	M	MH	Kroum El-Aarab	ML	M	MH
Kwachra	L	M	M	Kweykhat	ML	M	MH	Machta Hammoud	L	M	M
Majdala	L	M	M	Majdel Akkar	L	M	M	Mar Touma	L	M	M
Marlaya Melhem	ML	M	MH	Mashha	L	M	MH	Massoudiye	ML	M	MH
Mazraat Beit Ghattas	L	M	M	Mazraat En-Nahriye	VL	ML	M	Mechmech	L	L	L
Memneh	VL	L	L	Mhammara	L	M	M	Mighraq Aakkar	ML	M	MH
Minyara	ML	M	MH	Moqayteh	ML	M	MH	Mounjez	L	M	M
Msalla	L	M	M	Mzeihmeh	ML	M	MH	Nfaisch	ML	M	MH
Noura Et-Tahta	L	M	M	Ouadi El-Haour	ML	M	MH	Ouadi El-Jamous	L	M	M
Ouyoun El-Ghizlane	L	M	M	Qaabarine	ML	M	MH	Qabaait	L	L	M
Qachlaq	ML	M	MH	Qantara Aakkar	L	M	M	Qarha Aakkar	L	M	M
Qarqaf	L	M	M	Qboula	L	M	M	Qleiaat Aakkar	ML	M	MH
Qloud El-Baqie	L	M	M	Qobaiyat Aakkar	L	ML	ML	Qobbat Chamrat	ML	M	MH
Qorayat	L	ML	ML	Qornet Aakkar	L	L	ML	Qsair Aakkar	L	M	M
Rahbe	L	ML	M	Rihaniyet Aakkar	ML	M	MH	Rmah	L	M	M
Rmoul	ML	M	MH	Saadine	ML	M	MH	Sadaqa	L	M	M
Saidnaya	ML	M	MH	Sammouniye	ML	M	MH	Sayssouq	L	M	M
Semmaqiye	M	MH	MH	Semmaqli	ML	M	MH	Sfinet El-Dreib	L	M	M
Sfinet El-Qaitaa	L	ML	M	Sindyanet Zeidane	L	M	M	Souaisset Aakkar	L	M	MH
Srar	ML	M	MH	Tal Abbas El Gharby	ML	M	MH	Tal Abbas El-Charqy	L	M	MH
Tal Biret	ML	M	MH	Tal Hmayra	ML	M	MH	Tal Maayan Tal Kiri	ML	M	MH
Tal Sibel	ML	M	MH	Tallet Chattaha	L	M	M	Tikrit	L	M	M
Tleil	ML	M	MH	Tshea	L	L	L	Zawarib	L	M	MH
Zouq El Hosniyeh	L	M	M	Zouq El-Haddara	L	M	M	Zouq El-Hbalsa	L	M	M
Zouq El-Moqachrine	L	M	M								

Sud

Sour

Municipality	13-Feb	14-Feb	15-Feb	Municipality	13-Feb	14-Feb	15-Feb	Municipality	13-Feb	14-Feb	15-Feb
Aaiyeh	ML	M	M	Aalma El-Chaab	L	M	M	Aaytit	ML	M	M
Abbassiyeh Sour	ML	M	M	Abou Chech	L	M	M	Ain Abou Abdallah	ML	M	M
Ain Baal	ML	M	M	Arzoun	L	ML	M	Aziyeh	L	M	M
Baflaya	L	M	M	Barich	L	M	M	Batouliyeh	ML	M	M
Bayad	L	M	M	Bazouriyeh	ML	M	M	Bediass	L	M	M

Bestiyat	L	M	M	Borj El Chemali	M	M	MH	Borj En-Naqoura	L	M	M
Borj Rahhal	L	M	M	Boustane	ML	M	M	Btaychiyeh	L	M	M
Chaaitiye	ML	M	M	Chameh	L	M	M	Chehabiye	L	ML	M
Chehour	L	ML	M	Chihine	L	M	M	Debaal Sour	L	M	M
Deir Amess	L	M	M	Deir Kifa	L	ML	M	Deir Qanoun El-Ain	ML	M	M
Deir Qanoun El-Naher	L	M	M	Derdghaiya	L	M	M	Dhayra	L	M	M
Halloussiyeh	L	M	M	Hamoul	L	M	M	Hanaouey	ML	M	M
Henniye	ML	M	M	Hmairi Sour	L	M	M	Iskandarouna Sour	L	M	M
Jbal El Botom	L	M	M	Jebbin	L	M	M	Jennata	L	M	M
Jijim	L	M	M	Jouaiya	ML	M	M	Kneisset Sour	ML	M	M
Maarake	L	M	M	Maaroub	L	M	M	Majadel	L	M	M
Majdalzoun	L	M	M	Mansouri Sour	ML	M	M	Marnba	L	ML	M
Marouahine	L	M	M	Mazraat El-Zalloutiy	ML	M	M	Mazraat Mechref	L	M	M
Mazraat Tayr Semhat	L	L	M	Mheilib	M	M	MH	Neffakhiyeh	L	ML	M
Niha Sour	L	ML	M	Ouadi Jilo	L	M	M	Qana	ML	M	M
Qolaileh Sour	ML	M	M	Rechknany	L	M	M	Rmadiyah	ML	M	M
Selha Sour	L	ML	M	Siddiqine	ML	M	M	Sour	ML	M	MH
Srifa	L	ML	M	Tayr Debbe	ML	M	M	Tayr Felsay	L	M	M
Tayr Harfa	L	M	M	Touayri	L	ML	M	Toura	L	M	M
Yanouh Sour	L	M	M	Yarine	ML	M	M	Zebqine	L	M	M

Saida

Municipality	13-Feb	14-Feb	15-Feb	Municipality	13-Feb	14-Feb	15-Feb	Municipality	13-Feb	14-Feb	15-Feb
Aanqoun	ML	ML	M	Aaqtanit	ML	ML	M	Aarab Ej-Jall	ML	ML	M
Aarab Tabbaya	ML	ML	M	Abra Saida	ML	ML	M	Adloun	ML	M	M
Adousiyeh	M	M	M	Ain-El-Deleb	ML	ML	M	Arzai	L	M	M
Babliyah	ML	M	M	Barty	L	ML	M	Bissariyeh	M	M	M
Bnaafoul	ML	ML	M	Bqosta	ML	ML	M	Bramiy	ML	ML	M
Daoudiyeh	ML	M	M	Dareb El-Sim	ML	ML	M	Erkay	ML	ML	M
Ghassanieh	ML	M	M	Ghazieh	ML	M	M	Hajjeh	ML	ML	M
Haret Saida	ML	ML	M	Hartiyeh	ML	M	M	Hlaliye Saida	ML	ML	M
Insariyat	ML	M	M	Jazira Saida	ML	M	M	Kafar Bit	L	ML	M
Kaoutariyet El-Siyad	L	ML	M	Kfar Chellal	L	ML	M	Kfar Hatta Saida	ML	ML	M
Kfar Milke Saida	L	ML	M	Khartoum	L	M	M	Khaziz	ML	ML	M
Khirbet Ed-Douair Sa	ML	M	M	Khirbet El-Bassal	ML	M	M	Khrayeb Saida	ML	ML	M
Loubieh	ML	M	M	Maghdouche	L	ML	M	Majdelyoun	ML	ML	M
Matariyet El-Choumar	L	M	M	Matayriyeh	ML	M	M	Mazraat 'Mseileh	M	M	M
Mazraat 'Snaiber	M	M	M	Mazraat Aarab Soukka	ML	ML	M	Mazraat Deir Taqla	ML	M	M
Mazraat El Yahoudiye	M	M	M	Mazraat El-Housseini	M	M	M	Mazraat El-Mhaydaleh	ML	M	M
Mazraat El-Ouasta	ML	ML	M	Mazraat Jamjim	ML	ML	M	Mazraat Kaoutariyet	ML	M	M
Mazraat Kfar Badda	ML	M	M	Mazraat Oussamiyat	ML	M	M	Mazraat Sari	ML	M	M
Mazraat Sinai	ML	M	M	Meemariyeh	ML	M	M	Merouaniyeh	ML	M	M
Miyeh ou Miyeh	ML	ML	M	Najjariyeh	M	M	M	Qaaqiyat El-Snaouba	ML	M	M
Qnarit	ML	ML	M	Qraiye Saida	ML	ML	M	Saida Ed-Dekermane	ML	ML	M
Saida El-Oustani	ML	ML	M	Saida El-Qadimeh	ML	ML	M	Saida Kefraya	ML	ML	M
Saksakiyeh	ML	M	M	Salhieh Saida	ML	ML	M	Sarafand	M	M	M

Sfenta	L	L	M	Tafahta	ML	M	M	Tanbourit	ML	ML	M
Tebna	ML	M	M	Zaghdraiya	L	ML	M	Zeita	ML	ML	M
Zrariyeh	ML	M	M								

Jezzine

Municipality	13-Feb	14-Feb	15-Feb	Municipality	13-Feb	14-Feb	15-Feb	Municipality	13-Feb	14-Feb	15-Feb
Ain El-Mir (El Estab)	L	ML	M	Anane	L	L	M	Aramta	L	L	M
Ariya	L	L	ML	Aychiyeh	L	L	M	Azour	L	L	M
Baba	L	L	M	Baysour Jezzine	ML	ML	M	Benoueteh Jezzine	L	L	ML
Bhannine	L	VL	ML	Bisri	VL	L	ML	Bkassine	L	L	ML
Bouslaya	L	L	M	Btedine El-Leqech	L	L	M	Chbail	VL	L	ML
Chouliq Jezzine	ML	ML	M	Dahr Ed-Deir	L	L	M	Deir El Qattine	L	L	M
Demachqiyeh	L	ML	M	Ghabbatiyeh	L	VL	ML	Harf Jezzine	L	L	ML
Hassaniyeh	L	ML	M	Haytouleh	L	ML	M	Haytura	L	L	M
Hidab	L	L	M	Homsiyeh	L	L	M	Jabal Toura	L	L	M
Jarmaq	L	ML	M	Jensnaya	ML	ML	M	Jernaya	L	ML	M
Jezzine	L	L	ML	Karkha	L	ML	M	Kfar Falous	L	ML	M
Kfar Houna	L	L	ML	Kfar Jarrah	ML	ML	M	Lebaa	ML	ML	M
Louayzet Jezzine	L	L	M	Machmouche	VL	VL	L	Mahmoudiyeh Jezzine	L	ML	M
Maknounye Jezzine	L	L	M	Maraat Ouazaiyeh	L	ML	M	Mazraat Daraya	L	L	ML
Mazraat El-Aarqoub	L	L	M	Mazraat El-Mathane	VL	L	ML	Mazraat El-Rahbane	L	L	M
Mazraat Khallet Khaz	L	L	M	Mazraat Louzid (Loua	VL	L	ML	Mazraat Qrouh	L	ML	M
Mazraat Tamra	L	ML	M	Mazraat Zighrine Jez	L	L	M	Mazraat	L	L	M
Mharbiyeh	ML	ML	M	Midane Jezzine	L	L	ML	Mjeydel Jezzine	ML	ML	M
Mlikh	L	L	M	Mrah El-Hbasse	ML	ML	M	Ouadi Baanqoudaine	ML	ML	M
Ouadi El-Laymoun	L	ML	M	Ouardiyeh	VL	L	ML	Qabaa Jezzine	L	L	M
Qatrani	L	L	M	Qaytouleh	L	L	M	Qtaleh Jezzine	VL	L	M
Rihane Jezzine	L	ML	M	Rimat	L	L	M	Roum	L	L	M
Roummanet	L	ML	M	Sabbah	L	VL	ML	Saydoun	L	L	M
Sfaray	L	L	M	Snaya	L	L	M	Sojoud	L	ML	M
Srayri	L	ML	M	Taaid	VL	L	M	Wadi Jezzine	L	L	L
Zhalta	L	L	M								

Bekaa

West Bekaa

Municipality	13-Feb	14-Feb	15-Feb	Municipality	13-Feb	14-Feb	15-Feb	Municipality	13-Feb	14-Feb	15-Feb
Aammiq BG	L	L	ML	Ain El Tineh BG	L	L	ML	Ain Zebdeh	L	VL	L
Ana	L	VL	ML	Aytanit	L	L	L	Baaloul BG	L	L	ML
Bab Mareh	L	L	ML	Chouberqiye Aammiq	L	VL	ML	Dakoue	L	L	ML
Deir Ain El-Jaouze	L	VL	ML	Deir Tahniche	L	VL	ML	Ghaza	L	VL	ML
Harime El-Soughra	L	L	ML	Hoch Harimeh	L	L	ML	Jazira BG	L	VL	ML
Jib Jennine	L	L	ML	Kamed-El-Laouz	L	L	ML	Kefraya BG	L	VL	L
Khiara El Atika	L	VL	ML	Khiara	L	L	ML	Khirbet Qanafar	L	VL	ML
Lala	L	L	ML	Lebbaya BG	L	VL	ML	Loussa	L	L	M
Machghara	L	L	ML	Manara (Hammara) BG	L	L	L	Mansoura BG	L	VL	ML

Marej BG	L	L	ML	Maydoun	L	L	M	Ouaqf BG	L	VL	ML
Qaraaoun	L	L	ML	Qelya	L	L	M	Raouda (Istabel)	L	L	ML
Saghbine	L	VL	L	Sohmor	L	VL	ML	Soltan Yacoub el Ara	L	L	ML
Souairy	L	L	ML	Sultan Yaacoub	L	L	ML	Tal Znoub	L	VL	ML
Yehmor BG	L	L	ML	Zilaya	L	L	ML				

Zahle

Municipality	13-Feb	14-Feb	15-Feb	Municipality	13-Feb	14-Feb	15-Feb	Municipality	13-Feb	14-Feb	15-Feb
Aanjar (Haouch Mouss)	L	L	ML	Ablah	L	ML	M	Ain Kfarzabad	VL	L	ML
Ali-El-Nahri	L	ML	M	Bar Elias	L	L	ML	Bouarej	L	L	ML
Cheberqiyet Tabet	L	L	ML	Chtaura	L	VL	ML	Deir El Ghazal	VL	L	L
Delhamiyet Zahle	L	L	ML	Ferzol	L	L	ML	Haouch El-Ghanam	L	ML	M
Haouch Es-Siyadeh	L	VL	ML	Haouch Hala	L	L	ML	Haouch Mandara	L	L	ML
Haouch Qayssar	L	L	ML	Hezerta	L	L	ML	Hosh Moussa	L	L	ML
Jdita	L	L	ML	Kfarzabad	L	L	ML	Ksara	L	L	ML
Majdel Aanjar	L	L	ML	Makssi	L	L	ML	Massa	L	L	L
Mazraat Er-Remtaniye	L	L	ML	Mrayjat Zahle	L	L	ML	Mzaraa Zahle	L	L	ML
Nabi Ayla	L	ML	M	Nasriyet Rizk	L	L	L	Nasriyet Zahle	L	VL	ML
Niha Zahle	L	ML	M	Ouadi Ed-Deloum	L	L	ML	Ouadi El-Arayech	L	L	ML
Qaa El Rim	L	L	ML	Qab Elias	L	VL	ML	Qousaya	L	L	ML
Rhit	L	L	ML	Riyak	L	ML	M	Saadnayel	L	L	ML
Taal El-Akhdar	L	VL	ML	Taalbeya	L	L	ML	Taanayel	L	L	ML
Talamara	L	ML	M	Tcheflik Edde Haouch	L	L	ML	Tcheflik Qiqano	L	VL	ML
Terbol Zahle	L	L	ML	Touaite Zahle	L	L	ML	Zahle Aradi	L	L	ML
Zahle El-Berbara	L	L	ML	Zahle El-Maallaqa	L	L	ML	Zahle El-Midane	L	L	ML
Zahle Er-Rassiyeh	L	L	ML	Zahle Haouch El-Ouma	L	L	ML	Zahle Haouch El-Ouma	L	L	ML
Zahle Haouch Ez-Zara	L	L	ML	Zahle Maallaqa Aradi	L	L	ML	Zahle Mar Antonios	L	L	ML
Zahle Mar Elias	L	L	ML	Zahle Mar Gerios	L	L	ML	Zahle Saydet En-Naja	L	L	ML
Zebdoul	L	VL	ML								

Rachaiya

Municipality	13-Feb	14-Feb	15-Feb	Municipality	13-Feb	14-Feb	15-Feb	Municipality	13-Feb	14-Feb	15-Feb
Ain Arab Rachaiya	L	L	ML	Ain Ata	L	VL	L	Ain Harche	L	VL	L
Aqabe Rachaya	L	VL	ML	Ayha	L	VL	ML	Ayta El Fokhar	L	L	ML
Bakifa Rachaya	L	VL	L	Bakka	ML	L	ML	Beit Lahya	L	VL	ML
Bireh Rachaiya	L	L	ML	Daher El Ahmar	L	L	L	Deir El-Achayer	ML	L	L
Heloua Rachaiya	ML	L	L	Hoch El Qannabeh Rac	L	VL	L	Kaoukaba Bou Arab	L	L	L
Kfar Danis	L	L	ML	Kfar Mechki	L	VL	ML	Kfar Qouq	ML	L	L
Kherbet Rouha	L	L	ML	Majdel Balhiss	L	L	ML	Mdoukha	L	L	ML
Mhaydseh Rachaiya	L	L	ML	Nabi Safa	L	VL	ML	Rachaiya	L	VL	L
Rafid Rachaiya	ML	L	ML	Selsata (Mazraat Dei	L	L	L	Tannoura	L	VL	ML
Yanta	ML	L	L								

Beyrouth

Beyrouth

Municipality	13-Feb	14-Feb	15-Feb	Municipality	13-Feb	14-Feb	15-Feb	Municipality	13-Feb	14-Feb	15-Feb
--------------	--------	--------	--------	--------------	--------	--------	--------	--------------	--------	--------	--------

Achrafieh	ML	M	M	Ain el-Mreisse	ML	M	M	Bachoura	ML	M	M
Beirut Central Distr	ML	M	M	Marfai	ML	M	M	Mazraa	ML	M	M
Medaouar	ML	M	M	Minet el-Hosn	ML	M	M	Mwssaitbeh	ML	M	M
Ras Beirut	ML	M	M	Rmeil	ML	M	M	Saifi	ML	M	M
Zqaq el-Blat	ML	M	M								