

Lebanon Fire Risk Bulletin



CIVIL DEDEFENCE

Refer to cadast table condition.

Please note that the indicated temperature is at 2 meters height from the ground.

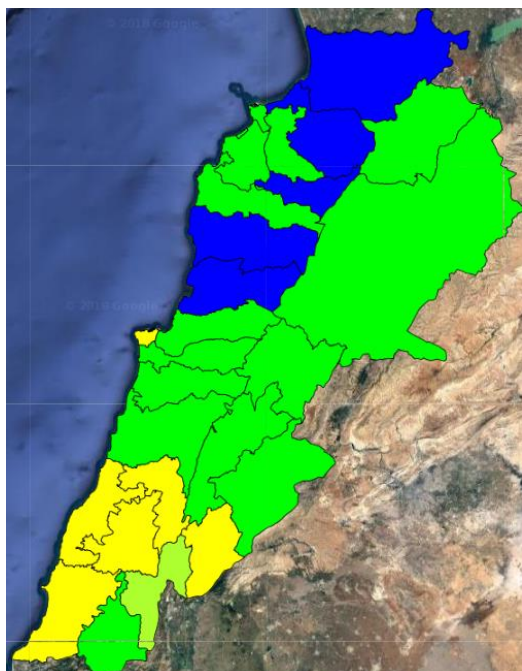
General description of potential fire risk situation

Symbol	Level of risk	Meaning and actions
VL	Very low	Very low fire risk. Controlled burning operations can be hardly executed due to high fuel moisture content. Normally wildfires self-extinguish.
L	Low	Low fire risk. Controlled burning operations can be executed with a reasonable degree of safety.
ML	Medium low	Medium-low fire risk. Controlled burning operations can be executed in safety conditions. All the fires need to be extinguished.
M	Medium	Medium fire risk. Controlled burning operations would be avoided. All the fires need to be very well extinguished.
MH	Medium high	Controlled burning is not recommended. Open flame will start fires. Cured grasslands and forest litter will burn readily. Spread is moderate in forests and fast in exposed areas. Patrolling and monitoring is suggested. Fight fires with direct attack and all available resources.
H	High	Ignition can occur easily with fast spread in grass, shrubs and forests. Fires will be very hot with crowning and short to medium spotting. Direct attack on the head may not be possible requiring indirect methods on flanks. Patrolling and monitoring the territory is highly suggested.
E	Extreme	Ignition can occur also from sparks. Fires will be extremely hot with fast rate of spread. Control may not be possible during day due to long range spotting and crowning. Suppression forces should limit efforts to limiting lateral spread. Damage potential total. Patrolling and monitoring the territory is highly suggested.

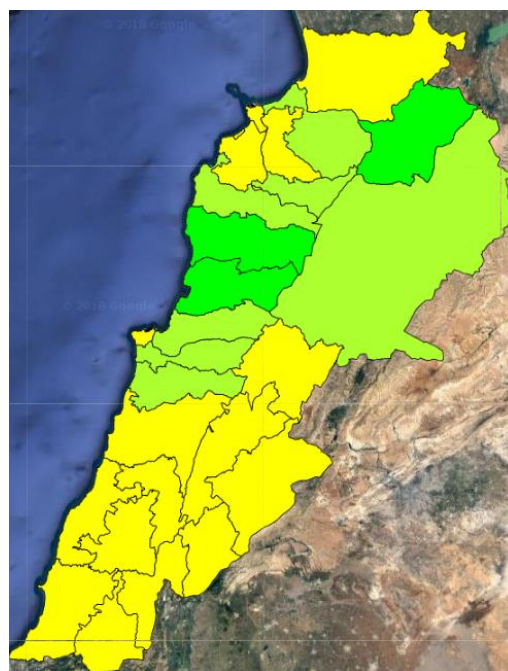
Beirut, 14 December 2018

FIRE RISK INDEX

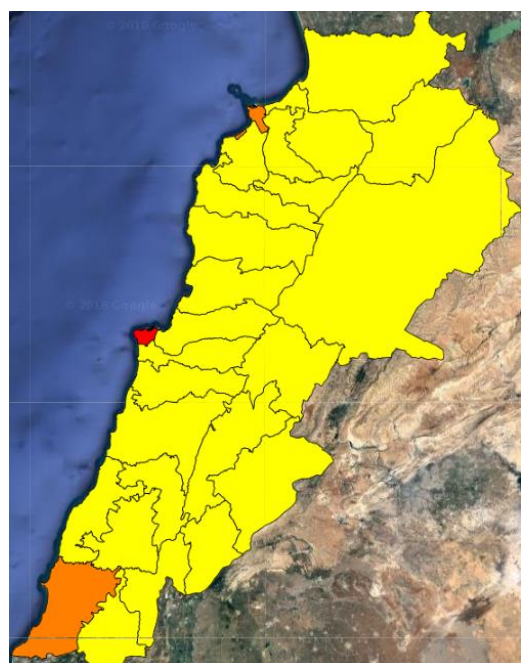
13 Dec 2018



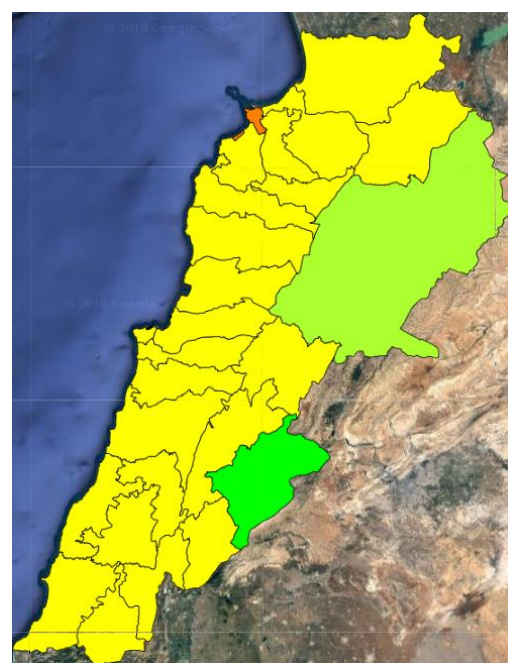
14 Dec 2018



15 Dec 2018



16 Dec 2018

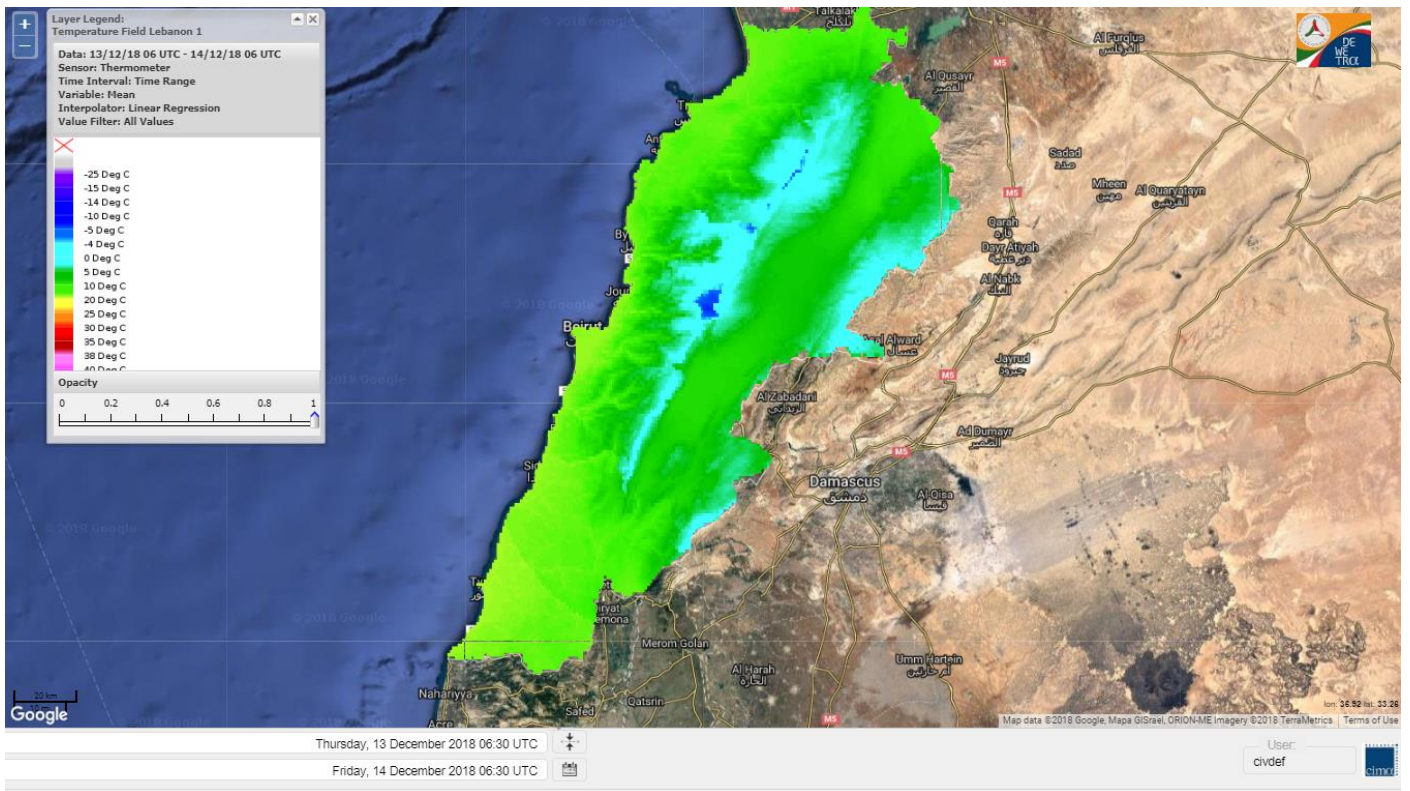


Layer Legend:
Lebanon Wildfire Risk Index 1

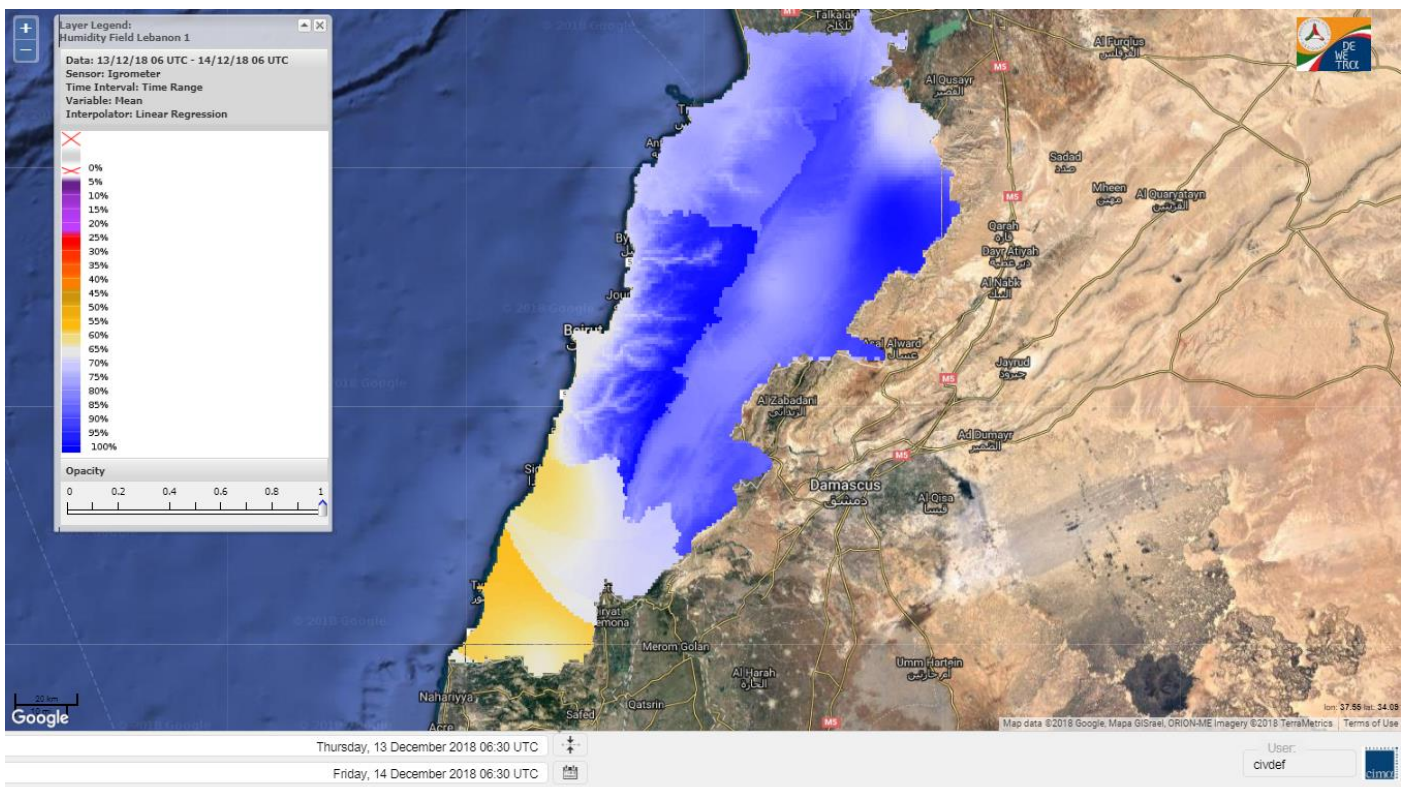
Data: Run: 14/12/2018 00:00. Forecast for 14
Model: RISICO for the Republic of Lebanon
Variable: Fire Weather Index
Spatial Resolution: Caza

- VERY LOW
- LOW
- MEDIUM-LOW
- MEDIUM
- MEDIUM-HIGH
- HIGH
- EXTREME

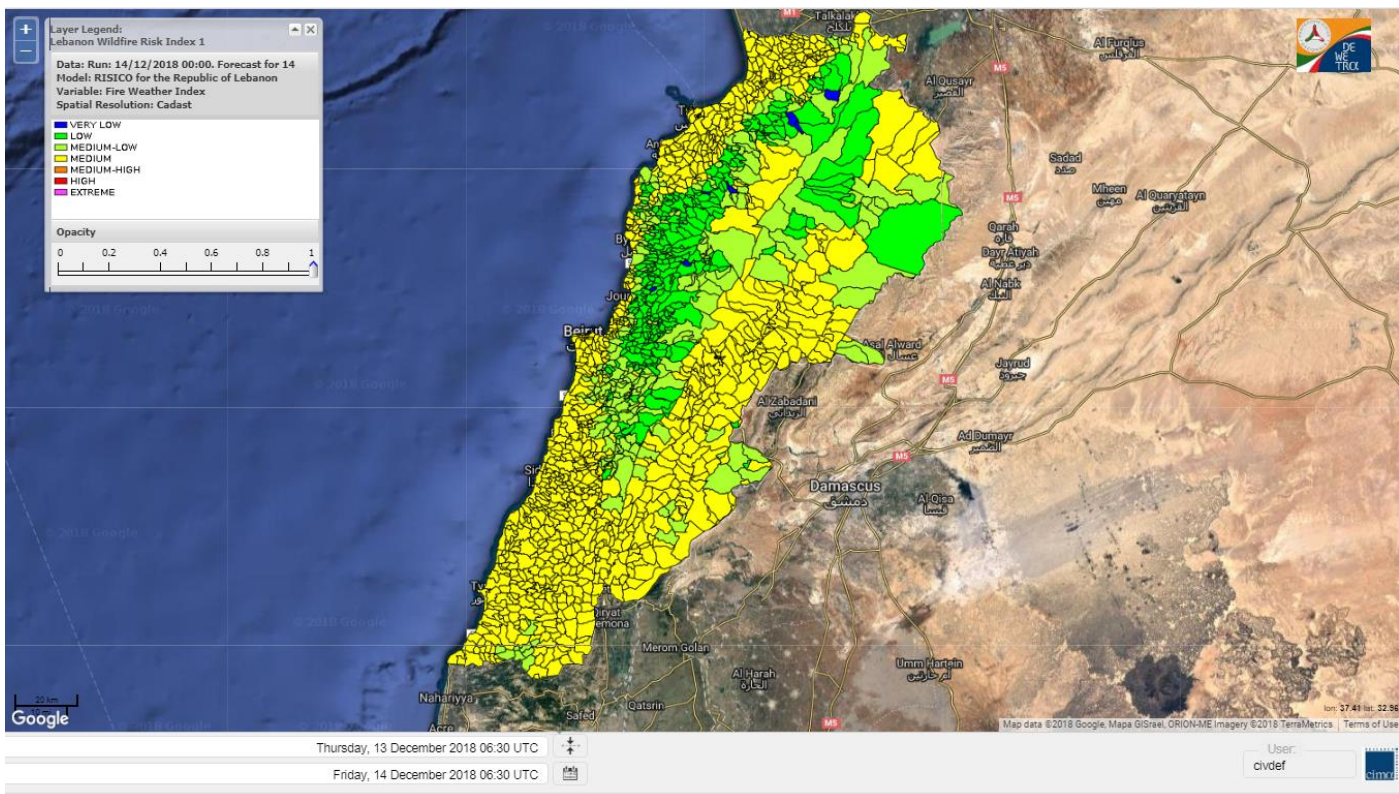
Lebanon temperature for 14 Dec 2018



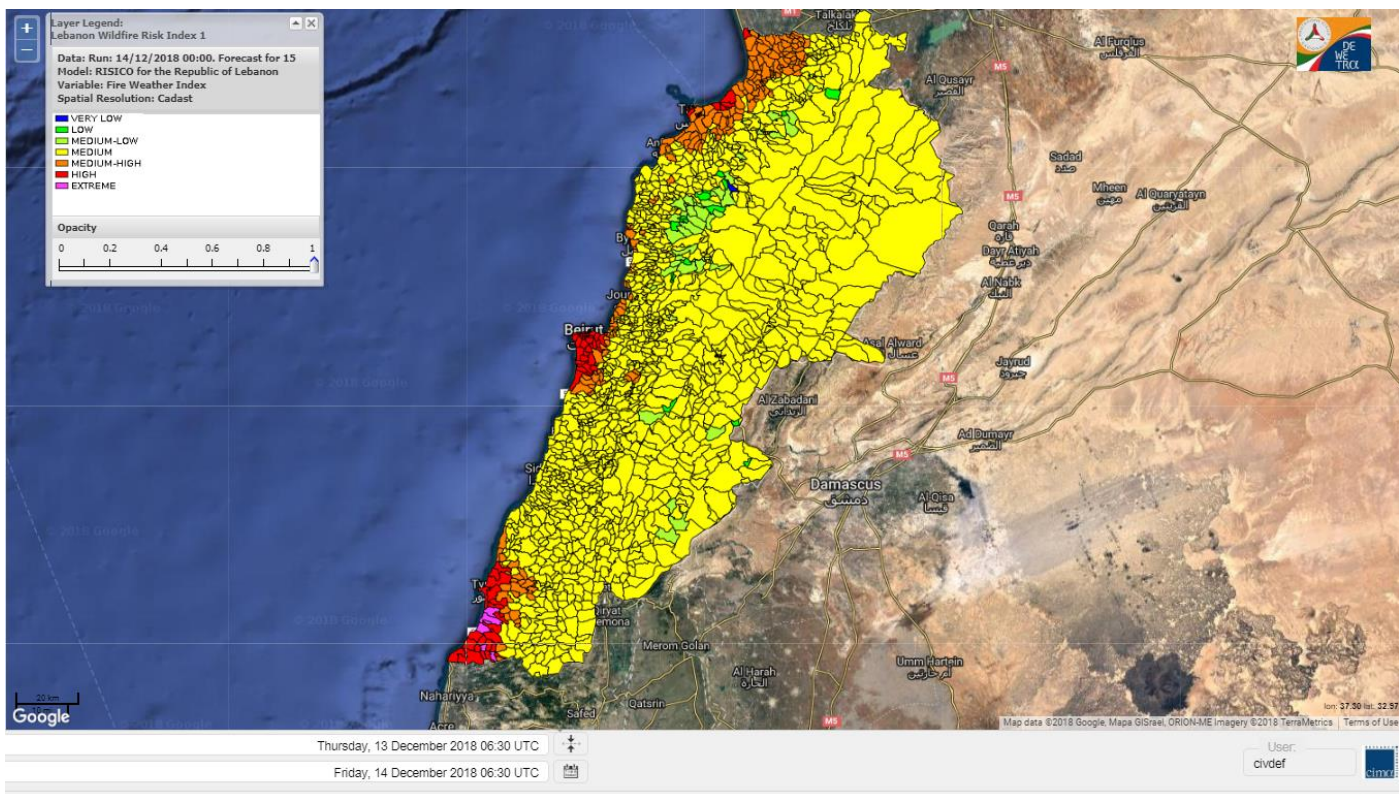
Lebanon humidity for 14 Dec 2018



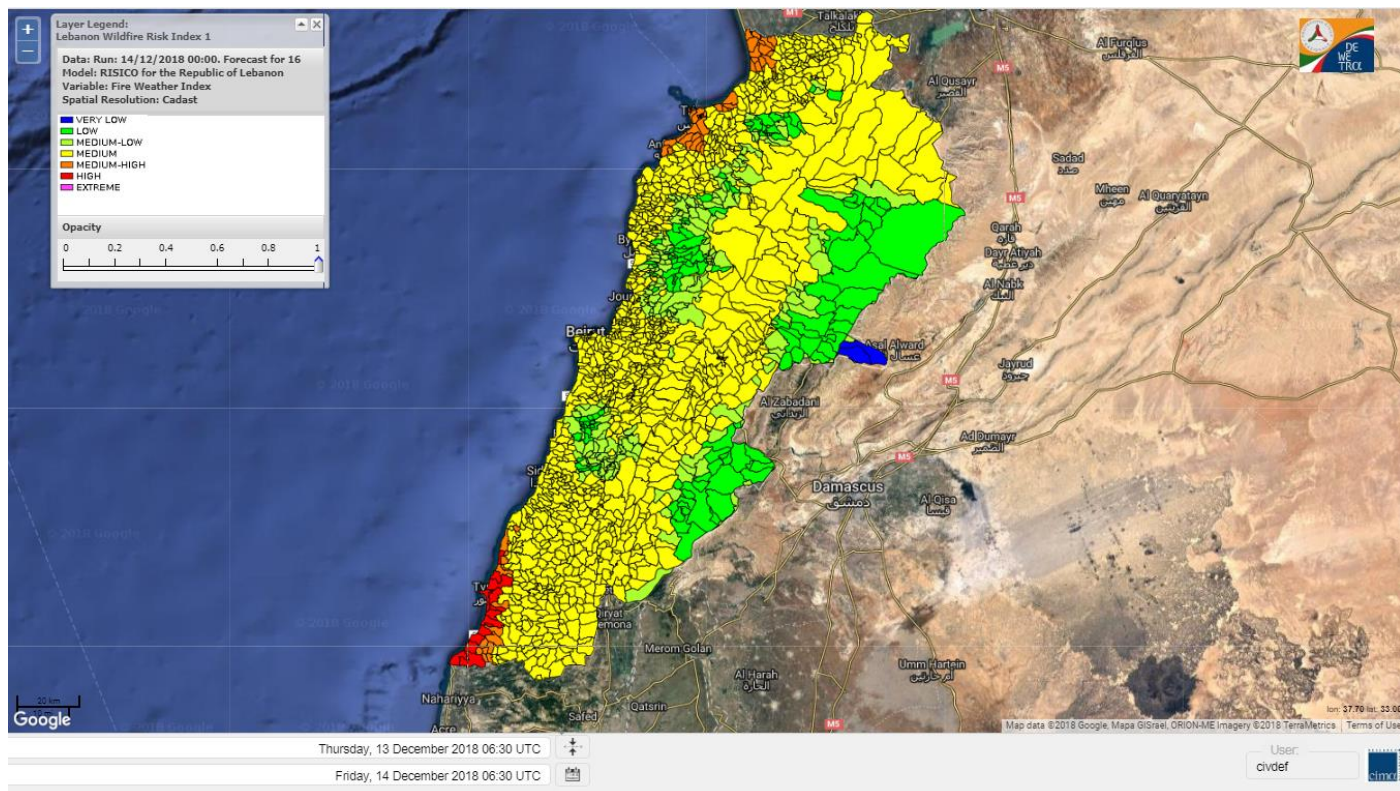
Lebanon for 14 Dec 2018



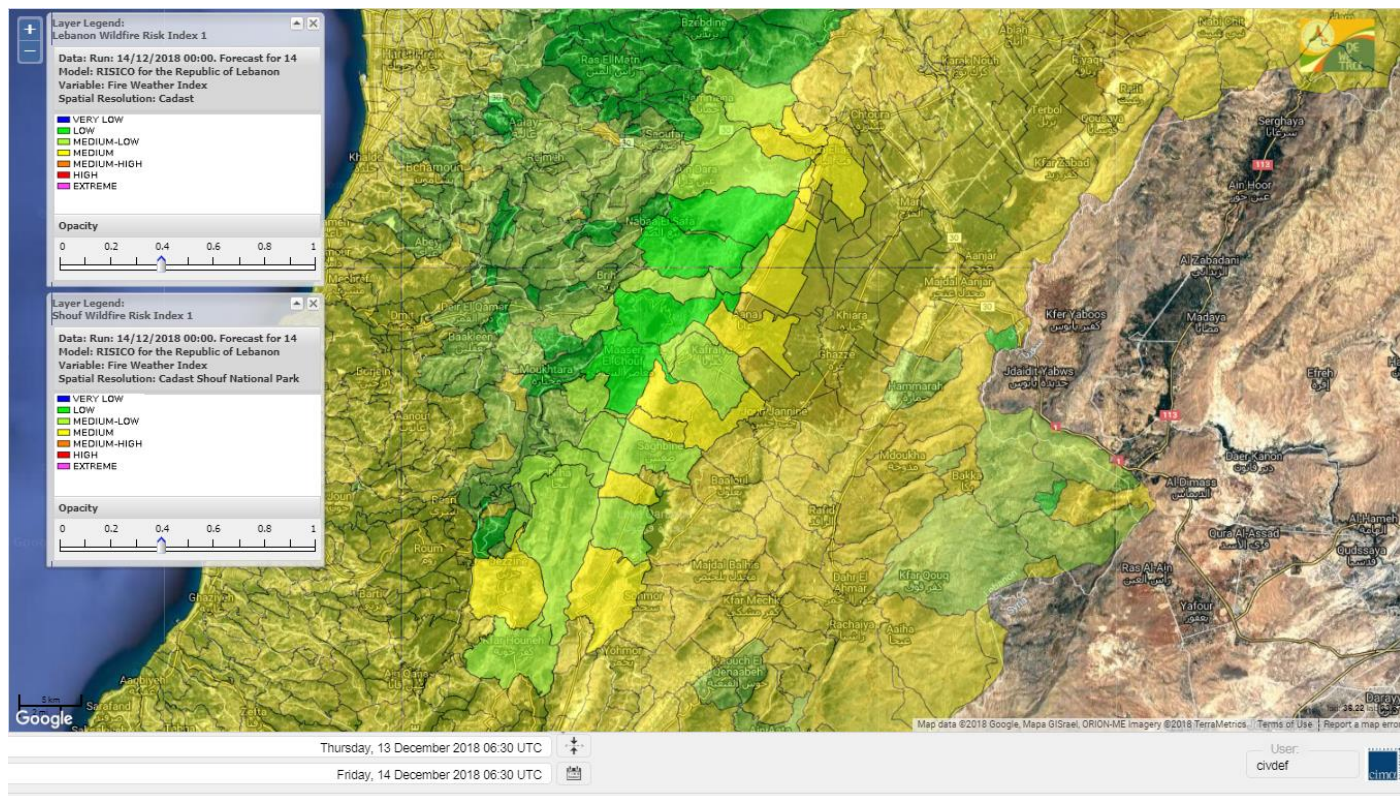
Lebanon for 15 Dec 2018



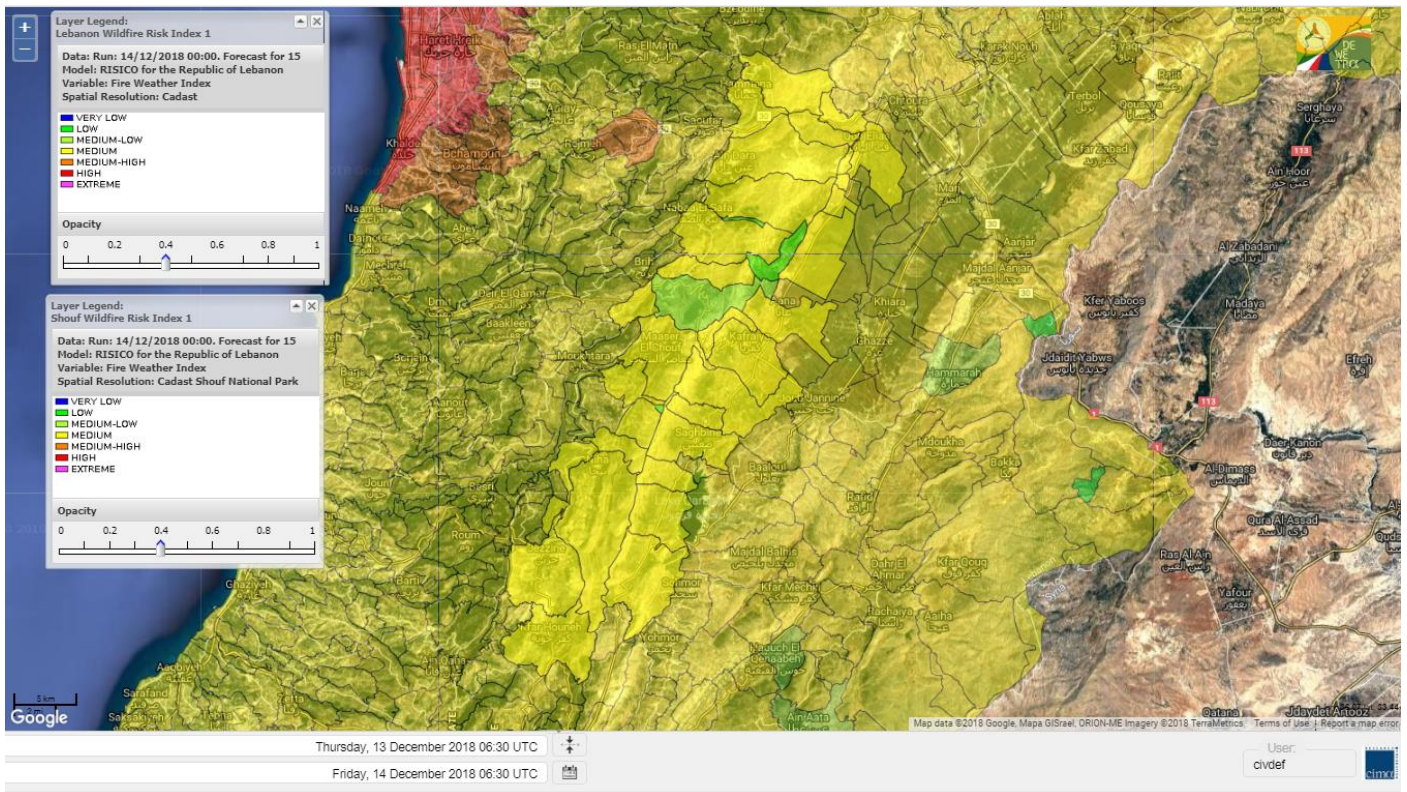
Lebanon for 16 Dec 2018



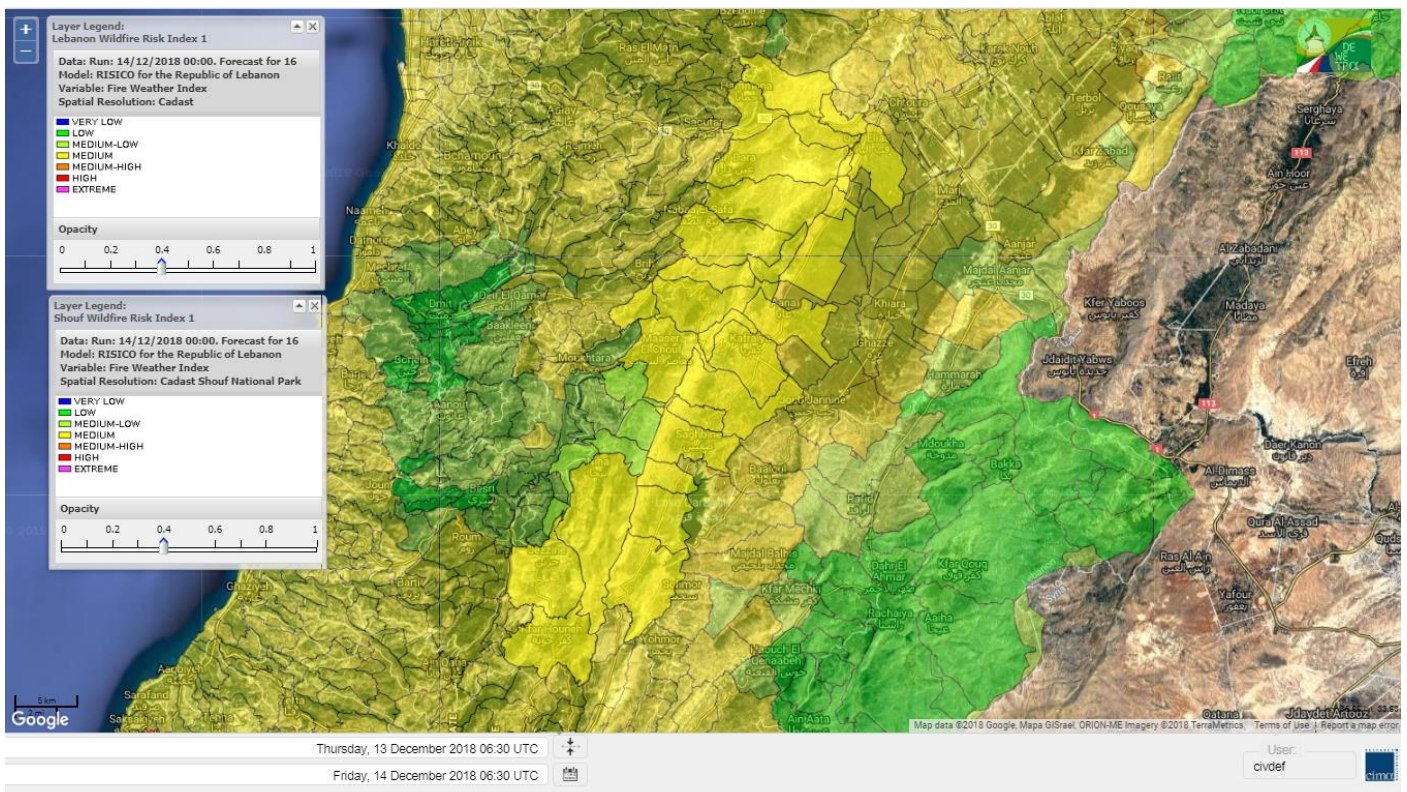
Shouf Biosphere Reserve Forecast for 14 Dec 2018



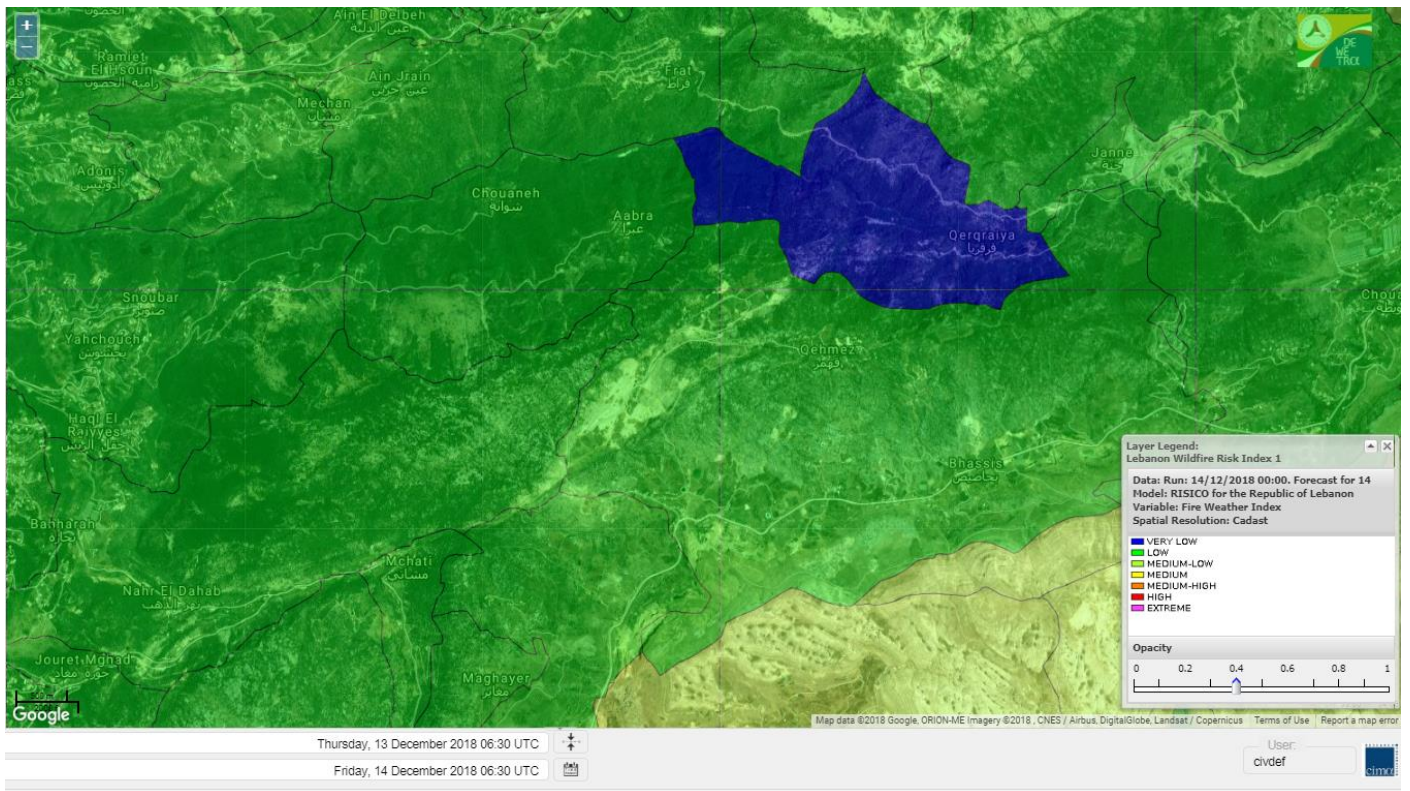
Shouf Biosphere Reserve Forecast for 15 Dec 2018



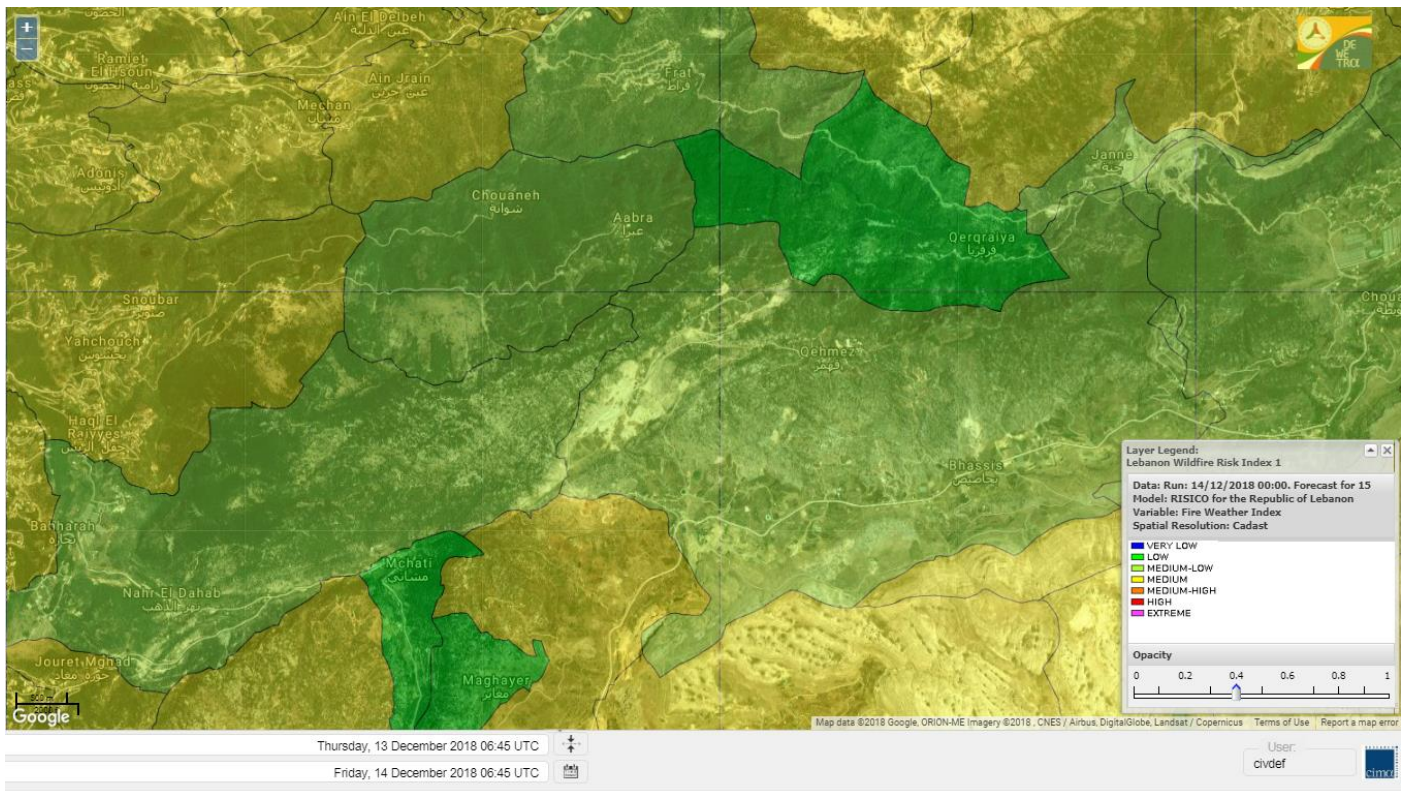
Shouf Biosphere Reserve Forecast for 16 Dec 2018



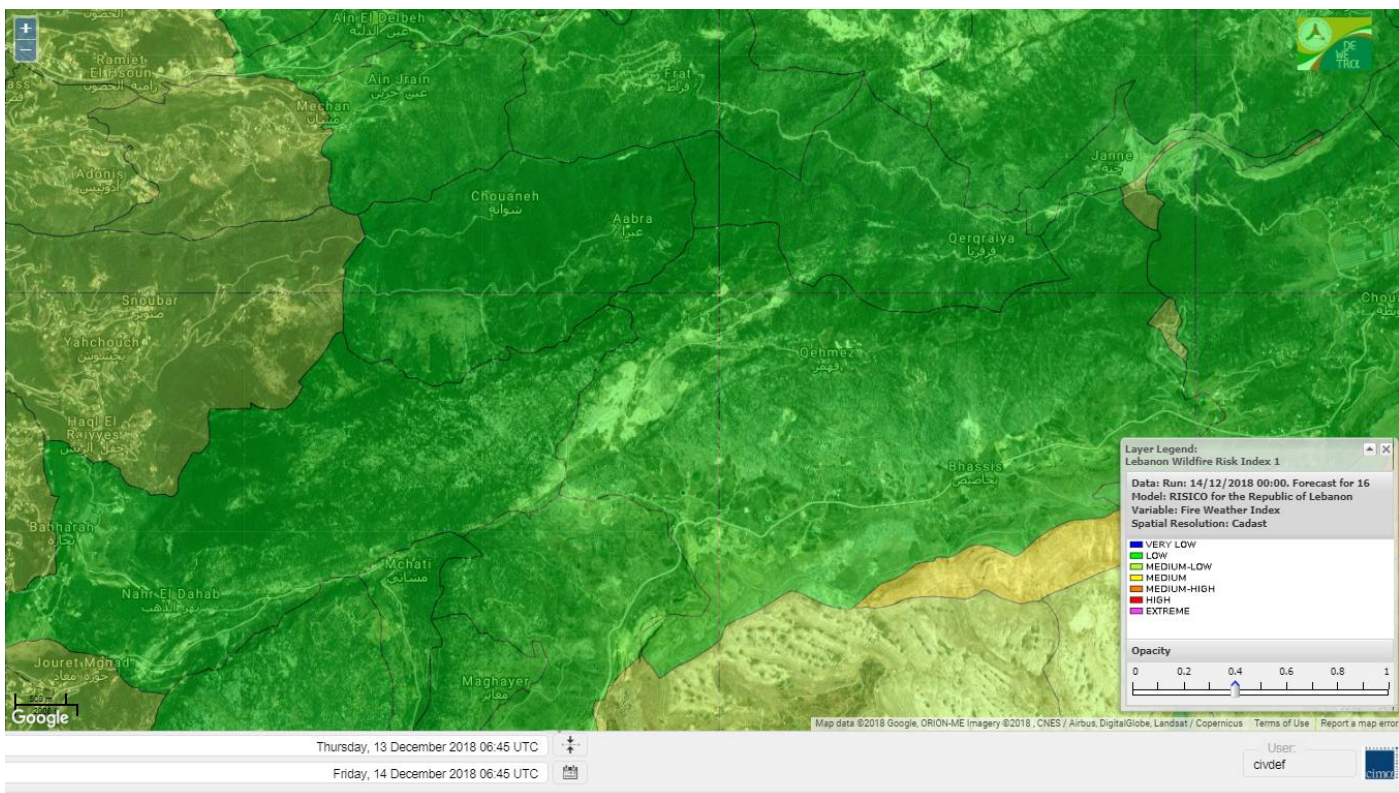
Jabal Moussa Reserve Forecast for 14 Dec 2018



Jabal Moussa Reserve Forecast for 15 Dec 2018



Jabal Moussa Reserve Forecast for 16 Dec 2018

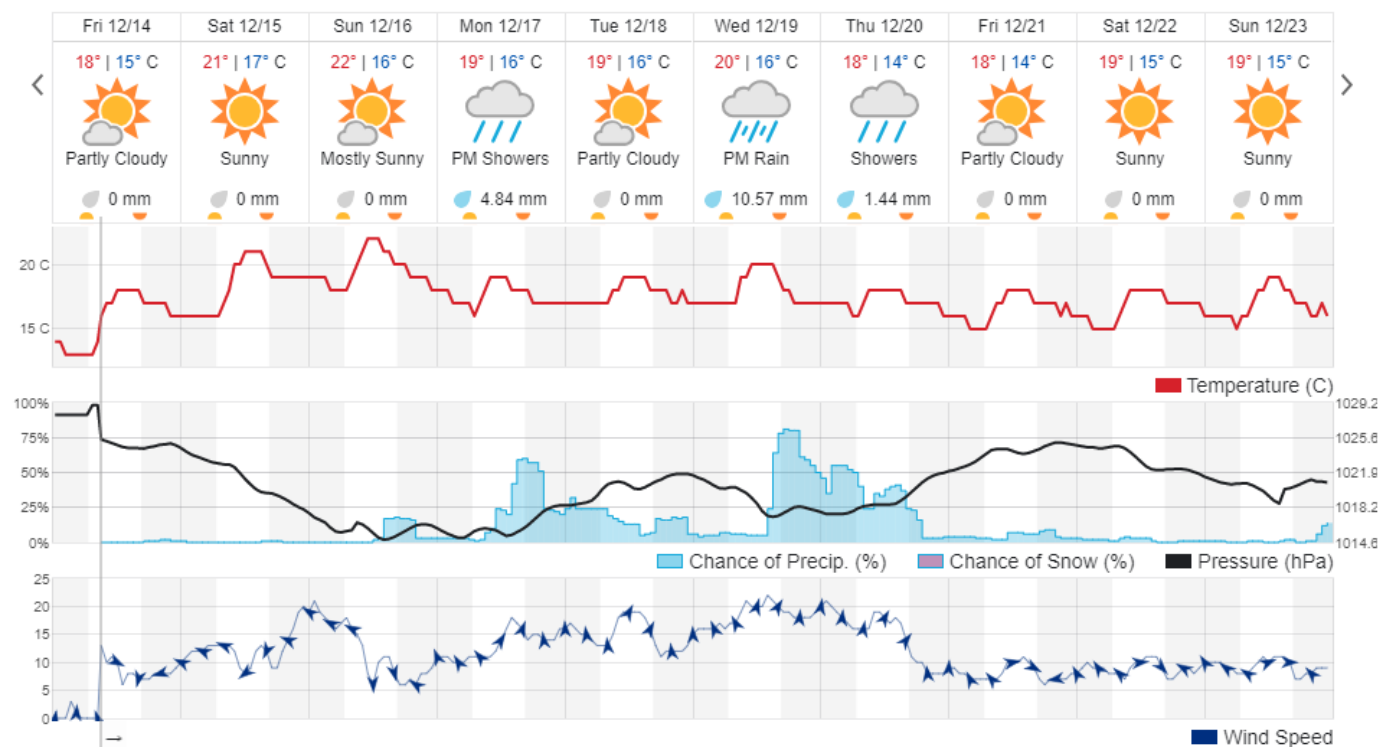


Beirut, Lebanon

16° ACHRAFIEH, RIZK STATION | REPORT | CHANGE

TODAY HOURLY 10-DAY CALENDAR HISTORY WUNDERMAP

Customize



Nord

Koura

Municipality	14-Dec	15-Dec	16-Dec	Municipality	14-Dec	15-Dec	16-Dec	Municipality	14-Dec	15-Dec	16-Dec
Aaba	M	M	M	Afsaddiq	M	M	M	Ain Ekriane	M	M	M
Amioun	M	M	M	Anfeh	M	MH	MH	Badbhoun	M	MH	M
Barghoun	M	M	M	Barsa	M	MH	MH	Batroumine	M	MH	MH
Bdebba	M	MH	M	Bechmizine	M	M	M	Bednayeil El-Koura	ML	M	M
Bhabbouch El-Koura	M	M	M	Bkeftine	M	MH	M	Bnehran	ML	M	M
Bqaiia El-Koura	M	MH	MH	Bsarma	M	M	M	Btaaboura	M	MH	M
Bttram	M	M	M	Btouratij	M	MH	MH	Bziza	M	M	M
Dar Beehtar	M	M	M	Dar Chmezzine	M	M	M	Deddeh	M	MH	MH
Deir El-Balamand	M	M	M	Fih	M	M	M	Hraiche	M	MH	MH
Ijdaabrine	ML	M	M	Kaftoun	M	M	M	Kefraya El-Koura	M	M	M
Kfarakka	M	M	M	Kfarhata	M	M	M	Kfarhazir	M	M	M
Kfarkahel	M	MH	MH	Kfarsaroun	M	M	M	Kosba	M	M	M
Mejdel el-Koura	M	M	M	Nakhle	M	MH	MH	Qalhat	M	M	M
Ras Masqa	M	MH	MH	Rechdibbine	M	M	M	Zakroun	M	MH	MH
Zgharta El-Mtaouile	L	M	M								

Bcharre

Municipality	14-Dec	15-Dec	16-Dec	Municipality	14-Dec	15-Dec	16-Dec	Municipality	14-Dec	15-Dec	16-Dec
Aabdine	ML	M	M	Bane	M	M	M	Barhelioun	L	M	M
Bazouone	M	M	M	Becharre	M	M	M	Beit Menzer	L	M	ML
Billa	ML	M	M	Blaouza	M	M	M	Bqaa Kafra	M	M	M
Bqerqacha	M	M	M	Breissat	ML	ML	ML	Dimane	ML	M	ML
Hadath El Jobbeh	ML	ML	ML	Hadchit	ML	M	ML	Hasroun	ML	M	M
Mazraat Aassaf	VL	L	ML	Mazraat Bani Saab	L	ML	ML	Mchaa El-Jobbeh	M	M	M
Metrit	ML	M	M	Moghr El-Ahoual	ML	M	M	Ouadi Qannoubine	VL	VL	L
Qanat	L	ML	ML	Qnayouer	L	L	L	Tourza	L	M	ML

Batroun

Municipality	14-Dec	15-Dec	16-Dec	Municipality	14-Dec	15-Dec	16-Dec	Municipality	14-Dec	15-Dec	16-Dec
Aabrine	L	M	M	Aalali	L	M	ML	Aartziz	L	M	M
Abdelli	L	M	M	Ajdabra	L	M	M	Assia	L	ML	ML
Basbina	M	M	M	Batroun	M	M	M	Bcheleh	L	ML	ML
Bechtoudar	L	ML	ML	Beit Chlala	L	ML	ML	Beit Kassab	L	ML	M
Bijdarfil	M	M	M	Bqesmaya	M	M	M	Chatine	L	ML	ML
Chebtin	L	M	M	Chekka	M	M	M	Daael	L	M	ML
Dahr Abi Yaghi	L	M	M	Daraya El-Batroun	M	M	M	Deir Billa	L	M	M
Deir Kfifane	ML	M	M	Deir Mar Youhanna EL	L	ML	ML	Deir Mar Youssef Jra	L	M	M
Douma	L	ML	ML	Douq	L	M	M	Eddeh El-Batroun	ML	M	M
Ftihat El-Batroun	L	M	ML	Ghouma	ML	M	M	Hadtoun	L	ML	ML
Hamat	ML	M	M	Harbouna	L	M	M	Hardine	L	L	L
Helta	L	M	ML	Hery	M	M	M	Jebbla	L	M	M
Jrabta El-Batroun	ML	M	M	Jrane El-Batroun	M	MH	M	Kfar Aabida	M	M	M
Kfar Halda	L	M	ML	Kfarb Shlaimane	L	ML	ML	Kfarhatna	L	M	M
Kfarhay	M	M	M	Kfarhelos	L	M	M	Kfifane	M	MH	M

Kfour El Arabi	L	ML	ML	Koubba	M	M	M	Kour	ML	M	M
Mar Mama	L	M	ML	Masrah	L	M	M	Mehmarch	ML	M	ML
Mrah Chdid	L	M	M	Mrah El Ziyat	ML	M	M	Mrah El-Hajj	L	ML	ML
Nahle El-Batroun	L	ML	ML	Niha El-Batroun	L	M	ML	Ouahj El-Hajjar	ML	M	M
Ouata Houb	L	ML	ML	Qatnaaoun	ML	M	M	Racha	ML	M	ML
Rachana	ML	M	M	Rachkida	ML	M	M	Ram El-Batroun	L	L	L
Ras Nahhach	ML	M	M	Selaata	M	M	M	Sghar	ML	M	M
Smar Jbayl	ML	M	M	Sourat El-Batroun	L	M	ML	Tannourine El-Faouqa	M	M	M
Tannourine Et-Tahta	L	L	L	Thoum	ML	M	M	Toula El-Batroun	L	M	M
Zan	L	M	M								

Zgharta

Municipality	14-Dec	15-Dec	16-Dec	Municipality	14-Dec	15-Dec	16-Dec	Municipality	14-Dec	15-Dec	16-Dec
Aachach	M	MH	M	Aalma	M	MH	M	Aarde	M	M	M
Aintourine	ML	M	M	Arabet Qozhaya	L	ML	ML	Arde	M	MH	M
Arjis	M	M	M	Asnoun	M	M	M	Ayto	L	M	ML
Basloukit	ML	M	M	Bchannine	M	M	M	Besebeel	M	M	M
Bhairret Toula	L	ML	ML	Bnachee	M	M	M	Boussit	M	MH	M
Danha	M	MH	M	Daraiya Zgharta	M	M	M	Deir Jdeide	M	M	M
Ehden	ML	M	ML	Halan	M	MH	M	Hariq Zgharta	M	M	M
Houakir	ML	M	M	Hraiqis	M	H	MH	laal	M	M	M
Ijbaa	ML	M	M	Karm Saddeh	L	M	ML	Kfarchakhna	M	M	M
Kfardlaqous	M	MH	M	Kfarfou	M	M	M	Kfarhata Zgharta	M	MH	M
Kfarhoura	M	M	M	Kfarsghab	ML	M	ML	Kfaryachit	M	M	M
Kfarzaina	M	M	M	Khaldiye	M	M	M	Mazraat Ajbeaa	M	M	M
Mazraat Et-Teffah	L	M	ML	Mazraat Jneid	M	M	M	Mejdlaya Zgharta	M	MH	M
Merh Kfarsghab	M	M	M	Miryata	M	MH	M	Miziara	L	M	M
Mzraat Kefraya	M	MH	M	Qorah Bach	M	M	M	Rachiine	M	MH	M
Ras Kifa	M	M	M	Sakhra	M	M	M	Sebhel Zgharta	ML	M	M
Serhel	L	L	L	Tallet Zgharta	M	M	M	Toula Zgharta	L	M	ML
Zgharta	M	MH	M								

Minieh-Denniye

Municipality	14-Dec	15-Dec	16-Dec	Municipality	14-Dec	15-Dec	16-Dec	Municipality	14-Dec	15-Dec	16-Dec
Aasaymout	L	L	L	Aaymar	ML	M	ML	Aazki	ML	M	ML
Ain El-Tineh-Miniyeh	L	M	ML	Assoun	ML	M	ML	Bakhaaoun	L	M	L
Bchennata	ML	M	M	Bechehhara	L	M	M	Beddawi	M	MH	M
Behouaita	L	ML	ML	Beit El Foqss	L	M	ML	Beit Haouik	ML	M	ML
Beit Zoud	L	M	ML	Bekaasafrine	M	M	M	Borj El Yahoudiyeh	M	MH	MH
Bqarsouna	L	M	ML	Btermaz	L	M	L	Debaael	L	ML	L
Deir Ammar	M	H	MH	Deir Nbouh	ML	M	M	Haouaret-Miniyeh	L	M	ML
Haql el Azimeh	L	M	L	Harf El Siyad	L	ML	L	Hazmiye-Miniyeh	L	M	L
Izal	ML	M	M	Jarjour	L	M	M	Jayroun	L	ML	L
Kahf El-Malloul	L	M	M	Karm El-Moher	ML	M	ML	Kfar Binine	L	M	ML
Kfarchalane	ML	M	ML	Kfarhabou	M	M	M	Kharroub-Miniyeh	ML	M	ML
Mazraat El-Kreme	L	M	ML	Mazraat Ketrane	L	M	ML	Merkebeta	M	MH	M
Minyeh	M	MH	MH	Mrah El Sfirat	L	M	L	Mrah Sraj	L	M	L
Mrebbine	ML	M	M	Nabi Youcheaa	M	MH	MH	Nemrine	ML	M	ML

Qarhaiya	L	M	ML	Qarne	VL	ML	L	Qarsita	L	ML	L
Qattineh-Miniyeh	L	ML	L	Qemmamine	VL	M	L	Qraine	L	M	L
Raouda-Aadoua	M	M	M	Rihaniyet-Miniyeh	M	MH	M	Sfireh	L	M	L
Sir Ed-Danniyeh	L	M	ML	Tarane	L	M	L	Terbol-Miniyeh	M	MH	M
Zaghartaghriane	ML	M	M	Zouq Bhannine	M	MH	M				

Nabatiye

Nabatiye

Municipality	14-Dec	15-Dec	16-Dec	Municipality	14-Dec	15-Dec	16-Dec	Municipality	14-Dec	15-Dec	16-Dec
Aabba	M	M	M	Aazzi	M	M	M	Adchit El-Chqif	M	M	M
Ain Bou Swar	M	M	M	Ain Kana	M	M	M	Ali El-Taher	M	M	M
Ansar	M	M	M	Arab Salim	M	M	M	Arnoun	M	M	M
Bfaroue	M	M	M	Breyqaah	M	M	M	Charqiyeh	M	M	M
Choukine	M	M	M	Deir El Zahrani	M	M	M	Doueir El-Nabatiyeh	M	M	M
Habbouch El-Nabatiye	M	M	M	Hamra El-Nabatiyeh	M	M	M	Harouf El-Nabatiyeh	M	M	M
Hmaile	M	M	M	Houmin El Faouqa	M	M	M	Houmin El Tahta	M	M	M
Jarjough	M	M	M	Jbaah El-Nabatiyeh	M	M	M	Jebchit	M	M	M
Kfar Djal El-Nabatiy	M	M	M	Kfar Remmane	M	M	M	Kfar Sir	M	M	M
Kfar Tebnit	M	M	M	Kfarfila	M	M	M	Kfour El-Nabatieh	M	M	M
Mayfadoun	M	M	M	Mazraat Bsaffour	M	M	M	Mazraat Chalbaal	M	M	M
Mazraat Dmoul	M	M	M	Mazraat El Khreibeh	M	M	M	Mazraat El-Bayad El-	M	M	M
Mazraat Kfarjaouz	M	M	M	Mazraat Qalaat Meiss	M	M	M	Nabatiyeh El-Fawka	M	M	M
Nabatiyeh Et-Tahta	M	M	M	Namiriyeh	M	M	M	Qaaqaaiyet El Jisr	M	M	M
Qossaibeh El-Nabatiy	M	M	M	Roumine	M	M	M	Sarba El-Nabatieh	M	M	M
Sir El-Gharbiyeh	M	M	M	Toul	M	M	M	Yehmor El-Nabatiyeh	M	M	M
Zaoutar El Charkiyeh	M	M	M	Zaoutar El-Gharbiyeh	M	M	M	Zebdine El-Nabatiyeh	M	M	M
Zefta	M	M	M								

Hasbaiya

Municipality	14-Dec	15-Dec	16-Dec	Municipality	14-Dec	15-Dec	16-Dec	Municipality	14-Dec	15-Dec	16-Dec
Aain Jarfa	M	M	M	Abou Qamha	M	M	M	Ain Qania	M	M	M
Bourghos	M	M	M	Chebaa	M	M	M	Chouaya Hasbaya	M	M	M
Dellafeh	M	M	M	Fardiss Hasbaiya	M	M	M	Hasbaya	M	M	M
Hbariyeh	M	M	M	Kaoukaba Hasbaiya	M	M	M	Kfar Chouba	M	M	M
Kfar Hamam	M	M	M	Kfeir El-Zait	M	M	M	Khalwat Hasbaya	ML	ML	ML
Khreibet Hasbaiya	M	M	M	Majidiyeh Hasbaiya	M	M	M	Marj Ez-Zhour (Haouc	ML	M	ML
Meri	M	M	M	Mimass	M	M	M	Rachaiya El-Fokhar	M	M	M
Salaiyeb	M	M	M								

Marjayoun

Municipality	14-Dec	15-Dec	16-Dec	Municipality	14-Dec	15-Dec	16-Dec	Municipality	14-Dec	15-Dec	16-Dec
Aalmane Marjaayoun	M	M	M	Aamra	M	M	M	Adayseh Marjaayoun	M	M	M
Adchit El-Koussair	M	M	M	Ain Aarab Marjaayoun	M	M	M	Bani Haiyann	M	M	M
Blatt Marjaayoun	M	M	M	Blida	M	M	M	Borj El-Moulouk	M	M	M
Boueyda Marjaayoun	M	M	M	Deir Mimass	M	M	M	Deir Siriane	M	M	M
Dibbine	M	M	M	Ebel El Saqi	M	M	M	Houla	M	M	M
Houra	M	M	M	Kfar Kila	M	M	M	Khiam Marjaayoun	M	M	M

Klayaa	M	M	M	Majdel Selem	M	M	M	Marjaayoun	M	M	M
Markaba	M	M	M	Mays El-Jabal	M	M	M	Mazraat Doumiat	M	M	M
Mazraat Sarada	M	M	M	Mhaibib	M	M	M	Qabrikha	M	M	M
Qantara	M	M	M	Rab El-Thalathine	M	M	M	Saouaneh Marjayoun	M	M	M
Talloussa	M	M	M	Taybeh Matjaayoun	M	M	M	Touline	M	M	M

Bent Jbail

Municipality	14-Dec	15-Dec	16-Dec	Municipality	14-Dec	15-Dec	16-Dec	Municipality	14-Dec	15-Dec	16-Dec
Ain-Ebel	M	M	M	Aitaroun	M	M	M	Aynata Bint Jbeil	M	M	M
Ayta El-Chaeb	ML	M	M	Ayta El-Jabal	M	M	M	Beit Lif	ML	M	M
Beit Yahoun	M	M	M	Bint Jbeil	M	M	M	Borj Qalaway	M	M	M
Braachit	M	M	M	Chakra	M	M	M	Debel	M	M	M
Deir Antar	M	M	M	Froun	M	M	M	Ghandouriyeh Bint Jb	M	M	M
Hanine	M	M	M	Hariss	M	M	M	Hdatha	M	M	M
Jmeymeh	M	M	M	Kafra Bint Jbeil	ML	M	M	Kfar Dounine	M	M	M
Khirbet Selm	M	M	M	Kounine	M	M	M	Maroun El Ras	M	M	M
Qalaway	M	M	M	Qaouzah	ML	M	M	Qatmoun	M	M	M
Ramya Bint Jbeil	ML	M	M	Rchaf	ML	M	M	Rmeich	M	M	M
Safad Al Battikh	M	M	M	Salhaneh	ML	M	M	Serbine	M	M	M
Sultanieh Bint Jbeil	M	M	M	Tibnine	M	M	M	Tiri	M	M	M
Yaroun	M	M	M	Yater	M	M	M				

Mont Liban

Jbail

Municipality	14-Dec	15-Dec	16-Dec	Municipality	14-Dec	15-Dec	16-Dec	Municipality	14-Dec	15-Dec	16-Dec
Aabeydat	L	M	M	Aalita	L	M	ML	Aamchit	M	MH	M
Aarab El-Lahib	ML	M	M	Aarasta	L	ML	ML	Adonis Jbeil	L	M	ML
Afqa Jbeil	L	ML	L	Ain El Delbeh Jbeil	L	M	L	Ain El-Ghouayba	L	ML	L
Ain Jrain	L	M	L	Ain Kfah	ML	M	M	Almat El Chemaliyat	L	M	L
Almat El-Jenoubiya	L	ML	L	Aqoura	ML	M	M	Bayzoun	L	M	L
Bchille Jbeil	L	M	ML	Bechtlida	L	M	L	Behdaydat	ML	M	M
Beit Habbaq	ML	M	M	Bejjeh	ML	M	M	Bekhaaz	ML	M	M
Berbara Jbeil	M	M	M	Bintael	L	M	M	Birket Hjoula	L	M	ML
Blatt Jbeil	ML	M	M	Boulhos	L	M	L	Breyj Jbeil	L	M	ML
Chamat	M	M	M	Chikhane	M	M	M	Chmout	L	M	M
Eddeh Jbeil	M	M	M	Ehmej	L	M	L	Fatre	L	M	ML
Ferhet	ML	M	ML	Fghal	L	M	M	Frat	L	ML	L
Ghabat	ML	M	ML	Ghalboun	ML	M	M	Gharzouz	M	M	M
Ghofrine	M	M	M	Habil	L	M	M	Halate	ML	M	M
Haqel	L	M	M	Hbaline	ML	M	M	Hboub	ML	M	M
Hdeine	ML	M	ML	Hema Er-Rehban	ML	M	ML	Hema Mar Maroun Aann	ML	M	L
Hjoula	L	M	ML	Hosrayel	M	M	M	Hsarat	ML	M	M
Hsoun	L	M	ML	Jaj	L	ML	ML	Janne	L	ML	L
Jbeil	M	MH	M	Jeddeyl Jbeil	M	MH	M	Jlisse	L	M	ML
Jouret El-Qattine	L	M	ML	Kfar Baal Annaya	L	M	ML	Kfar Kidde	M	M	M
Kfar Kouas	L	M	ML	Kfar Mashoun	M	MH	M	Kfoun	L	M	M

Kharbe Jbeil	ML	M	M	Laqlouq	ML	M	ML	Lassa	L	ML	L
Lehfed	L	L	L	Maad	ML	M	M	Mar Sarkis	ML	M	L
Mastita	M	MH	M	Mayfouq	L	ML	ML	Mazraat El Siyad	ML	M	ML
Mazraat El-Maaden	L	ML	L	Mechane	L	M	ML	Mechmech Jbeil	L	ML	L
Mehrin	ML	M	M	Mejdel El-Akoura	L	M	ML	Mghayreh Jbeil	ML	M	ML
Mounsef	M	M	M	Nahr Ibrahim	M	MH	M	Qahmez	L	ML	L
Qartaba	L	M	L	Qartaboun	M	MH	M	Qattara Jbeil	L	L	L
Qorqraya	VL	L	L	Ramout	ML	M	M	Ras Osta	L	M	ML
Rihane Jbeil	M	MH	M	Sakiet El-Khayt	L	M	M	Saqi Richmaya	L	ML	L
Sebrine	L	M	ML	Seraita	L	M	ML	Souane Jbeil	L	M	L
Tadmor	ML	M	ML	Tartej	L	ML	ML	Torzaiya	L	M	L
Yanouh Jbeil	L	M	ML	Zibdine Jbeil	L	M	ML				

El Metn

Municipality	14-Dec	15-Dec	16-Dec	Municipality	14-Dec	15-Dec	16-Dec	Municipality	14-Dec	15-Dec	16-Dec
Aain El-Qabu	L	ML	ML	Aain El-Qach	L	M	M	Aain El-Teffaha	ML	M	M
Aain el-Safsaf El-M	L	M	M	Abou Mizane	L	M	M	Ain Aar	M	MH	M
Ain Alaq	L	M	M	Ain El-Kharroube	ML	M	M	Ain El-Sendiane	L	M	M
Ain El-Zeitoune	L	M	M	Ain Saadeh	ML	M	M	Aintoura El-Matn	ML	M	M
Amaret Chalhoub	M	H	M	Antelias	M	MH	M	Atchaneh	L	M	M
Ayroun	L	M	M	Baabdat	L	M	M	Baouchariyeh	M	H	M
Baskinta	L	M	ML	Beit Chabab	L	M	M	Beit El-Chaar	M	MH	M
Beit El-Kekko	M	MH	M	Beit Mery	ML	M	M	Bhersaf	L	M	M
Bikfaya	L	M	M	Biyakout	M	MH	M	Bnabil	L	M	M
Bourj Hammoud	M	H	M	Bqennaya	ML	M	M	Broummana El-Matn	L	M	M
Bsalim	ML	M	M	Bsifrine	L	M	M	Bteghrine	L	M	M
Chaouiye	ML	M	M	Chouaya El-Matn	ML	M	M	Choueir	L	M	M
Chrine	L	M	M	Dahr El Sawan El-Mat	L	M	M	Daychouniyeh	M	M	M
Dbayeh	M	MH	M	Deir Chamra	L	M	ML	Deir Mar Abda el Mch	ML	M	M
Deir Mar Roukouz	M	MH	M	Deir Tamiche	ML	M	M	Dik El-Mehdi	M	M	M
Dikwaneh	M	H	M	Douar El-Matn	L	M	M	Fanar	M	MH	M
Fraike	ML	M	M	Haret El-Ballaneh	M	M	M	Hbous	M	M	M
Himlaya	L	M	M	Jal El Did	M	MH	M	Jdeideh El-Metn	M	MH	M
Jouar El-Matn	L	M	M	Jouret El-Ballout	L	M	M	Kaaqour	L	M	M
Kfar Aaqab	L	M	M	Kfertay El-Matn	L	M	ML	Khenchara	L	M	M
Khillet El-Mtain	L	M	M	Konnabat Broummana	L	M	M	Konnabat Salima	L	M	M
Machraah El-Matn	L	M	M	Majdel Tarchich	ML	M	M	Majzoub	M	MH	M
Mansouriyeh El-Metn	M	MH	M	Mar Boutros Karm Et-	L	M	M	Mar Chaya et Mzekke	L	M	M
Mar Moussa Ed-Douar	L	M	M	Marjaba	L	M	M	Masqa	L	M	M
Mayasse	L	M	M	Mazraat Deir Aoukar	M	M	M	Mazraat El-Hadirat	M	M	M
Mazraat Yachouh	M	M	M	Mchikha	ML	M	M	Menqlet Mezher	M	MH	M
Mhaydseh Matn	L	M	M	Mkalles	M	H	M	Mrouj	ML	M	M
Mtain	ML	M	M	Mtayleb	M	M	M	Nabay	ML	M	M
Naccache	M	MH	M	Ouadi Chahine	L	M	M	Ouadi El-Karm El-Mat	L	M	ML
Ouata El-Mrouj	L	M	M	Ouyoun El-Matn	L	M	M	Qornet Chehwan	ML	M	M
Qornet El-Hamra	ML	M	M	Roumieh	ML	M	M	Sfeilet Bikfaya	L	M	M
Sinn El-Fil	M	H	M	Zabbougha	L	M	ML	Zalqa	M	MH	M

Zarouon	L	M	M	Zekrite	ML	M	M	Zighrine El-Matn	L	M	M
Zouk El-Khrab	M	MH	M								

Chouf

Municipality	14-Dec	15-Dec	16-Dec	Municipality	14-Dec	15-Dec	16-Dec	Municipality	14-Dec	15-Dec	16-Dec
Aalmane El-Chouf	M	M	M	Aammqi El-Chouf	ML	M	M	Ain Ouzein	L	M	M
Ain Qani	L	M	ML	Ain Zhalta	L	M	M	Ainbal	ML	M	ML
Amatour	ML	M	ML	Anout	M	M	ML	Atrine	ML	M	M
Baadarane	ML	M	ML	Baaqline	ML	M	ML	Baasir	M	M	M
Barja	M	M	M	Barouk	L	ML	M	Bater	ML	M	ML
Batloun	ML	M	M	Bayqoun	M	M	M	Bchetfine	M	M	L
Beiteddine	L	M	M	Benouati Ech-Chouf	M	M	L	Berjein	M	M	L
Bireh et Mtalleh	ML	M	M	Biret El-Chouf	ML	M	M	Bkechtine Ouel Mchei	M	M	L
Bkifa El-Chouf	M	M	ML	Botme	L	M	ML	Bqaiaa Ech-Chouf	M	M	L
Bsaba El-Chouf	M	M	ML	Chammis El-Chouf	M	M	M	Chehim	M	M	ML
Chemaarine	M	M	L	Chourit	L	M	M	Daher El-Chouf	M	M	M
Dalhoun	M	M	M	Damour	M	M	M	Daraya El-Chouf	M	M	L
Deir El-Moukhalles	M	M	L	Deir Baba	M	M	L	Deir Dourit	M	M	L
Deir El-Qamar	ML	M	ML	Deir Kouche	ML	M	ML	Dibbieh	M	M	ML
Dmit	M	M	L	Fouara Jaafar	L	M	M	Fraidis El-Chouf	ML	M	M
Ghabet Jaafar	M	M	L	Gharife	M	M	ML	Haret Jandal	ML	M	ML
Hasrout	M	M	ML	Jadra	M	M	M	Jahlieh	M	M	L
Jbeih El-Chouf	ML	M	ML	Jdeidet El-Chouf	ML	M	M	Jiyeh	M	M	M
Jleilyeh	M	M	ML	Jmailiyeh	M	M	M	Joun	M	M	M
Kahlounie El-Chouf	M	M	M	Ketermaya	M	M	M	Kfar Faqoud	M	M	L
Kfar Hamal	M	M	M	Kfar Him	M	M	L	Kfar Katra	ML	M	M
Kfar Niss	ML	M	M	Kfar hay	ML	M	M	Kfarnabrakh	ML	M	M
Khirbet Bisri	M	M	ML	Knayse El-Chouf	L	M	ML	Maaniyeh	M	M	M
Maasser Beiteddine	ML	M	M	Maasser El-Chouf	L	M	M	Majdalouna	M	M	M
Majdel El-Meouch	ML	M	M	Mazboud	M	M	ML	Mazmoura	M	M	ML
Mazraat El Chouf	ML	M	ML	Mazraat El Daher	M	M	ML	Mazraat El-Douair	L	M	ML
Mechref	M	M	ML	Mghairie	M	M	M	Mghayrie El-Chouf	M	M	L
Moukhtara	L	M	M	Mrusti	ML	M	ML	Mtolle	M	M	ML
Naameh	M	M	M	Niha El-Chouf	ML	M	M	Ouadi Abou Youssef	M	M	L
Ouadi Ed-Deir	M	M	L	Ouadi El-Sit	ML	M	M	Ouadi bnehlay	M	M	L
Qraibeh	ML	M	ML	Qreiaa	M	M	L	Rmayle El-Chouf	M	M	M
Semqaniyeh	ML	M	M	Sibline	M	M	M	Sirjbeil	M	M	L
Warhanieh	ML	M	M	Werdaniyeh	M	M	M	Zaarourieh	M	M	ML

Baabda

Municipality	14-Dec	15-Dec	16-Dec	Municipality	14-Dec	15-Dec	16-Dec	Municipality	14-Dec	15-Dec	16-Dec
Abadiyeh	ML	M	M	Ain Mouaffaq	ML	M	M	Araiya	ML	M	M
Arbaniyeh	L	M	M	Arsoun	L	M	M	Baabda	M	MH	M
Baalchmey	ML	M	M	Bmaryam	L	M	M	Bourj El-Brajneh	M	H	M
Boutchay	M	MH	M	Bsaba Baabda	M	MH	M	Btekhney	L	M	M
Btibyat	L	M	M	Bzebdine	L	M	M	Chbeniyeh	L	M	M
Chiyah	M	H	M	Chmeisset Baabda	L	M	M	Chouit	L	M	M
Deir El-harf	L	M	M	Deir Khouna	ML	M	M	Dlaybeh	L	M	M

Falougha	ML	M	M	Furn El-Chebbak	M	H	M	Hadath Beyrouth	M	H	M
Halaliyeh Baabda	L	M	M	Hammana	ML	M	M	Haret El Sett	ML	M	M
Haret Hamze	L	M	M	Haret Hreik	M	H	M	Hasbaiya El-Metn	L	M	M
Jouar El-Hoz	L	M	ML	Jouret Arsoun	L	M	M	Kfar Chima	M	H	M
Kfar Selouane	L	M	M	Khalouat Baabda	ML	M	M	Kneisset Baabda	L	M	M
Laylakeh	M	H	M	Louayzeh Baabda	M	M	M	Merdache	M	H	M
Mzairaa Baabda	L	M	M	Ouadi Chahrour El OI	ML	M	M	Ouadi Chahrour El So	ML	M	M
Qalaa Baabda	L	M	M	Qhraybe Baabda	L	M	M	Qobbayaa	ML	M	M
Qornayel	L	M	M	Qortada	L	M	M	Qrayeh Baabda	L	M	M
Qsaibeh Baabda	L	M	M	Qtale Baabda	L	M	M	Ras El Metn	L	M	M
Ras El-Haref	ML	M	M	Rouayset El-Ballout	L	M	M	Salima Baabda	L	M	M
Tahouitat El Ghadir	M	H	M	Tarchich	L	M	M	Zandouqa	L	M	M

Aley

Municipality	14-Dec	15-Dec	16-Dec	Municipality	14-Dec	15-Dec	16-Dec	Municipality	14-Dec	15-Dec	16-Dec
Abey	ML	M	M	Aghmid	L	M	M	Ain Dara	ML	M	M
Ain Drafil	ML	M	M	Ain El Halazoun	ML	M	M	Ain El-Rmmaneh	L	M	M
Ain Jedideh	ML	M	M	Ain Ksour	ML	M	M	Ain Onoub	ML	MH	M
Ain Traz	ML	M	M	Ainab	ML	M	M	Aley	ML	M	M
Aramoun	M	MH	M	Aytat	M	MH	M	Azouniyeh	ML	M	M
Baawerta	M	M	M	Badghan Oua Wadi Bad	ML	M	M	Bassatine	ML	MH	M
Bayssour	ML	M	M	Bchamoun	M	MH	M	Bdadoun	ML	M	M
Behouara	ML	M	M	Bennay	M	M	ML	Bhamdoun El-Dayaa	ML	MH	M
Bhamdoun El-Mhatta	M	MH	M	Bkhechthey	ML	M	M	Bleibel	ML	MH	M
Bmakine	M	M	M	Bmehray	L	M	M	Bouzrid	L	M	M
Bserrine	M	M	M	Bsous	L	M	M	Btalloun	ML	MH	M
Btater	ML	M	M	Chanay	ML	MH	M	Charoun	ML	M	M
Chartoun	L	M	M	Chemlane	ML	MH	M	Choueifat El-Aamrous	M	H	M
Choueifat El-Oumara	M	H	M	Choueifat El-Quoubbe	M	H	M	Dakkoun	M	M	ML
Deir Qoubel	ML	MH	M	Dfoun	M	M	M	Douair El Remmaneh	L	M	M
Ghaboun	ML	M	M	Habramoun	L	M	M	Homs Oua Hama	ML	M	M
Houmal	ML	MH	M	Jisr El Qadi	ML	M	ML	Kehaleh	L	M	M
Keyfoun	M	MH	M	Kfar Aamey	ML	M	M	Kommatyeh	ML	M	M
Maasrati	ML	M	M	Majdel Baana	ML	M	M	Mansourieh et Ain El	ML	M	M
Mazraat El-Nahr	L	M	M	Mchakhte	L	M	M	Mecherfeh	ML	M	M
Mejdaya	ML	M	M	Mrayjat	ML	M	M	Ramliyah	L	M	M
Rechmaya	ML	M	M	Rejmeh	ML	M	M	Remhala	ML	M	M
Rouaysset El Neemane	ML	M	M	Saoufar	ML	M	M	Selfaya	ML	M	ML
Sirhmoul	ML	MH	M	Souq El Ghareb	ML	M	M	Taazanieh	ML	M	M

Kesrouane

Municipality	14-Dec	15-Dec	16-Dec	Municipality	14-Dec	15-Dec	16-Dec	Municipality	14-Dec	15-Dec	16-Dec
Achkout	L	M	ML	Adma Oua Dafneh	M	M	M	Ain Ed-Delbe Kesroua	L	L	L
Ain El-Rihane	L	M	M	Aintoura Kesrouane	ML	M	M	Ajaltoun	L	M	ML
Akaybeh Kesrouane	M	MH	M	Aramoun Kesrouane	L	M	ML	Azra ouel Ozor	L	M	ML
Ballouneh	L	M	M	Batha	L	M	M	Bekaatat Achkout	L	M	M
Bekaatat Kanaan	L	M	ML	Bizhel	L	M	L	Bouar	ML	M	M
Bqaatouta	L	M	ML	Bqaq Ed-Dine	ML	M	M	Bzommar	L	M	M

Chahtoul	L	M	ML	Chnaniir	L	M	M	Chouan	L	ML	L
Daraya Kesrouane	L	M	ML	Darououn	L	M	M	Deir Baqlouch	L	M	M
Dlebta	L	M	ML	Eghbeh	VL	ML	L	Faraya	ML	M	ML
Fatka	ML	M	M	Feytroun	L	M	ML	Ghazir	ML	M	M
Ghbaleh Kesrouane	L	M	ML	Ghedrass	L	M	ML	Ghosta	L	M	ML
Ghynéh	L	M	M	Harharaya w Kattine	L	M	ML	Harissa Kesrouane	L	M	M
Hayata	L	M	ML	Hosein	L	M	L	Hrajel	ML	M	ML
Jdeideh Ghazir	L	M	M	Jeita	ML	M	M	Jounieh Ghadir	M	M	M
Jounieh Haret Sakhr	M	MH	M	Jounieh Salel Alma	ML	M	M	Jounieh Sarba	M	MH	M
Jouret Bedrane	L	M	ML	Jouret Mhad	L	M	ML	Jouret Termos	L	M	M
Kfar Debiane	L	M	ML	Kfar Tay Kesrouane	L	M	L	Kfar Yassine	M	MH	M
Kfour Kesrouane	L	M	M	Kharayeb Nahr Ibrahi	L	M	M	Klayaat Kesrouane	L	M	ML
Maarab	L	M	ML	Maaysra Kesrouane	L	M	ML	Mayrouba	L	M	L
Mazraat Er-Ras	M	M	M	Mazraat Mrah El-Mir	L	M	ML	Mchaa El Ftouh	ML	M	M
Mchaa Faraya	ML	M	ML	Mchaa Kfar Dibiane	ML	M	M	Mghaer	L	L	L
Mradiyah	L	M	L	Nahr Ed-Dahab	L	ML	L	Nammoura Kesrouane	L	M	M
Ouata El Jaouz	L	M	L	Ouata Sillam	M	MH	M	Raachine	L	M	ML
Rayfoun	L	M	ML	Safra Kesrouane	M	M	M	Shayle Kesrouane	L	M	M
Tabarja	M	M	M	Yahchouch	L	M	ML	Zaaytreh	L	M	ML
Zeytoun	ML	M	M	Zouk Mikael	M	MH	M	Zouk Mosbeh	M	MH	M

Baalbek_Hermel

Baalbek

Municipality	14-Dec	15-Dec	16-Dec	Municipality	14-Dec	15-Dec	16-Dec	Municipality	14-Dec	15-Dec	16-Dec
Aadous	M	M	ML	Aamchki	ML	M	L	Aarsal	L	M	L
Ain Baalbek	ML	M	L	Ain Bourday	M	M	L	Ain El-Benye	M	M	L
Ain El-Jaouz Baalbek	ML	M	VL	Ain El-Siya Chadoura	M	M	L	Al Khodr Baalbek	M	M	L
Al Nabi Chit	M	M	L	Aynata Baalbek	ML	M	M	Baalbek	M	M	L
Bachwat	L	M	M	Barqa	L	M	M	Bednayel Baalbak	M	M	M
Beit Chama	M	M	M	Bijjaje	ML	M	L	Bouday	ML	M	M
Brital	M	M	L	Btadi	ML	M	M	Chaat	M	M	L
Chaibe	M	M	L	Chlifa	M	M	M	Chmestar	M	M	M
Dar El-Oussa	L	M	M	Deir El-Ahmar	ML	M	M	Deir Mar Maroun Baal	M	M	M
Douris	M	M	ML	Fakiha	ML	M	ML	Hadath Baalbek	M	M	M
Ham	M	M	L	Haour Taala	M	M	L	Hizzine	M	M	ML
Hlebta	L	M	M	Hosh Barada	M	M	ML	Hosh El Dahab	M	M	M
Hosh El Snid	M	M	L	Hosh El-Nabi	M	M	ML	Hosh El-Rafiq	M	M	M
Hosh Tal Safiya	M	M	ML	Hrebta	L	M	L	laat	M	M	M
Jebaa	M	M	M	Jenta	M	M	L	Kfar Dabach	M	M	M
Kfar Dane	M	M	M	Khraibeh El-Hermel	L	M	L	Khreibet Baalbek	M	M	L
Kneisset Baalbek	M	M	ML	Labueh	ML	M	L	Maarboun	M	M	L
Majdaloun	M	M	ML	Maqneh	M	M	ML	Mazraat Beit Mcheik	M	M	M
Misraya	M	M	M	Moqraq	ML	M	L	Nabha El-Damdoum	ML	M	M
Nabi Chbay	M	M	L	Nabi Osman	ML	M	L	Nahleh baalbek	ML	M	L
Ouadi El-Oss	L	M	ML	Qaa Baayoun	M	M	M	Qaa Jouar Maqiye	M	M	M
Qaa Ouadi El-Khanzir	M	M	M	Qah Baalbek	M	M	M	Qarha Baalbek	M	M	M

Qsarnaba	M	M	M	Ram Baalbek	L	M	ML	Ras Baalbek El Sahl	M	M	M
Ras Baalbek El-Charq	ML	M	M	Riha	M	M	ML	Saaide	M	M	M
Sbouba	ML	M	L	Seriine El-Tahta	M	M	ML	Slouqi	M	M	M
Taiba Baalbek	M	M	ML	Talia	M	M	ML	Taraiya	M	M	M
Temnin El Fawqa	M	M	M	Temnin El-Tahta	M	M	M	Tfail	ML	M	VL
Yahfoufa	M	M	L	Yammouneh	ML	M	M	Younine	M	M	L
Zboud	ML	M	L								

Hermel

Municipality	14-Dec	15-Dec	16-Dec	Municipality	14-Dec	15-Dec	16-Dec	Municipality	14-Dec	15-Dec	16-Dec
Charbine El-Hermel	L	M	M	Hermel Jbab	ML	M	M	Hermel	M	M	M
Maaysra El-Hermel	L	M	M	Michaa Mrjihine	L	M	M	Ouadi Faara	L	M	M
Ras Baalbek - Ouadi	M	M	M	Ras Baalbek El Gharb	L	M	M	Zighrine	L	M	M

Akkar

Akkar

Municipality	14-Dec	15-Dec	16-Dec	Municipality	14-Dec	15-Dec	16-Dec	Municipality	14-Dec	15-Dec	16-Dec
Aain Tinta	M	M	M	Aaiyat	ML	M	M	Aakkar El-Aatiqa	L	M	M
Aamar Akkar	M	MH	M	Aamar El Baykat	M	MH	M	Aamayer	M	M	M
Aamriyet Akkar	M	M	M	Aandqet	ML	M	M	Aarmeh	M	M	M
Aarqa	M	MH	M	Aawaynat	M	M	M	Aayoun Akkar	ML	M	M
Abboudiye	M	MH	M	Ain El-Zeit	M	M	M	Ain Yaaqoub	L	M	M
Akroum	ML	M	M	Aridet Cheikh Zennad	M	H	MH	Baldech w Mazraat Bal	M	MH	M
Barcha	M	MH	M	Bardeh	M	M	M	Bebnine	M	MH	M
Beino	M	M	M	Beit Ayoub	M	M	M	Beit El-Haouch	M	MH	M
Beit Mellat	M	M	M	Beit Younes	ML	M	M	Berbara Akkar	M	M	M
Berqayel	M	MH	M	Bezbina	L	M	ML	Bireh Akkar	M	M	M
Borj	M	M	M	Bqerezla	M	M	M	Bzal	ML	M	M
Chane	L	M	M	Chaqdouf	M	M	M	Charbila	M	MH	M
Cheikh Mohammad	M	MH	M	Cheikh Taba Es-Sahl	M	MH	MH	Cheikh Taba	M	MH	M
Cheikh Zennad	M	MH	MH	Cheikhlar	M	M	M	Chir Hmairine	M	MH	M
Daghle	M	M	M	Dahr Laissine	M	MH	M	Darine	M	MH	M
Dawra	L	M	M	Dawsa w Baghdadi	M	M	M	Dayret Nahr El-Kabir	M	M	M
Deir Dalloum	M	MH	M	Deir Jennine	M	M	M	Denbou	ML	M	M
Dibbabiyyeh	M	M	M	Douair Aadwiyeh	M	M	M	Fassikine	M	M	M
Fnaydek	ML	M	M	Fraydes Akkar	ML	M	M	Ghazayle	M	MH	M
Habchit	L	M	M	Hakour	M	MH	M	Halba	M	MH	M
Haouchab	M	MH	M	Hayssat	M	MH	MH	Haytla	M	MH	M
Hayzouq	M	MH	M	Hedd	M	MH	M	Hmaira Akkar	M	MH	M
Hmaiss Akkar	M	MH	M	Hnaider	M	M	M	Hokr Ed-Dahri	M	MH	MH
Hokr Etti	M	MH	M	Hokr Jouret Srar	M	MH	M	Houaich	ML	M	M
Hrar	ML	M	M	Idbil	M	M	M	Ilal	M	M	M
Janine	M	MH	M	Jdeidet El-Joumeh	M	MH	M	Jdeidet El-Kaiteh	M	MH	M
Jebrayel	M	M	M	Kafr	ML	M	M	Kafr	M	M	M
Karm Asfour	M	M	M	Kfar Melki Akkar	M	MH	MH	Kfar Noun	ML	M	M
Kfarharra	M	MH	M	Khalsa	M	M	M	Kharnoubet Akkar	M	MH	M

Khirbet Daoud Aakkar	M	M	M	Khirbet El Remmane	ML	M	M	Khirbet Shar	M	M	M
Khoreybet El-Jindi	M	MH	M	Khreibet Aakkar	M	M	M	Kneisset Aakkar	M	MH	MH
Kneisset Hnaider	M	M	M	Knisse	M	MH	M	Kroum El-Aarab	M	MH	M
Kwachra	M	M	M	Kweykhath	M	MH	M	Machta Hammoud	M	M	M
Majdala	M	MH	M	Majdel Akkar	M	M	M	Mar Touma	M	MH	M
Marlaya Melhem	M	MH	M	Mashha	M	MH	M	Massoudiye	M	MH	MH
Mazraat Beit Ghattas	M	MH	M	Mazraat En-Nahriye	ML	M	M	Mechmech	L	M	M
Memneh	L	ML	L	Mhammara	M	MH	M	Mighraq Aakkar	M	MH	MH
Minyara	M	MH	M	Moqayteh	M	MH	MH	Mounjez	ML	M	M
Msalla	M	M	M	Mzeihmeh	M	MH	M	Nfaiseh	M	MH	M
Noura Et-Tahta	M	M	M	Ouadi El-Haour	M	MH	M	Ouadi El-Jamous	M	MH	M
Ouyoun El-Ghizlane	M	MH	M	Qaabarine	M	MH	MH	Qabaait	L	M	M
Qachlaq	M	MH	M	Qantara Aakkar	M	M	M	Qarha Aakkar	M	M	M
Qarqaf	M	MH	M	Qboula	M	M	M	Qleiaat Aakkar	M	MH	MH
Qloud El-Baqie	M	MH	M	Qobaiyat Aakkar	L	M	M	Qobbat Chamrat	M	MH	M
Qorayat	ML	M	M	Qornet Aakkar	M	M	M	Qsair Aakkar	M	M	M
Rahbe	M	M	M	Rihaniyet Aakkar	M	MH	M	Rmah	ML	M	M
Rmoul	M	MH	MH	Saadine	M	MH	M	Sadaqa	M	M	M
Saidnaya	M	MH	M	Sammouniye	M	MH	MH	Sayssoq	M	MH	M
Semmaqiye	M	MH	MH	Semmaqli	M	MH	M	Sfinet El-Dreib	M	MH	M
Sfinet El-Qaitaa	ML	M	M	Sindyanet Zeidane	ML	M	M	Souaisset Aakkar	M	MH	M
Srar	M	MH	M	Tal Abbas El Gharby	M	MH	M	Tal Abbas El-Chargy	M	MH	M
Tal Biret	M	MH	MH	Tal Hmayra	M	MH	M	Tal Maayan Tal Kiri	M	MH	MH
Tal Sibel	M	MH	MH	Tallet Chattaha	M	M	M	Tikrit	M	M	M
Tleil	M	MH	M	Tshea	ML	M	ML	Zawarib	M	M	M
Zouq El Hosniyeh	M	MH	M	Zouq El-Haddara	M	MH	M	Zouq El-Hbalsa	M	MH	M
Zouq El-Moqachrine	M	MH	M								

Sud

Sour

Municipality	14-Dec	15-Dec	16-Dec	Municipality	14-Dec	15-Dec	16-Dec	Municipality	14-Dec	15-Dec	16-Dec
Aaiyeh	M	MH	M	Aalma El-Chaab	M	H	H	Aaytit	M	M	M
Abbassiyeh Sour	M	H	H	Abou Chech	M	E	MH	Ain Abou Abdallah	M	H	MH
Ain Baal	M	H	MH	Arzoun	M	M	M	Aziyeh	M	H	MH
Baflaya	M	M	M	Barich	M	MH	M	Batouliyeh	M	H	H
Bayad	M	M	M	Bazouriyeh	M	MH	M	Bediass	M	M	M
Bestiyat	M	MH	M	Borj El Chemali	M	H	H	Borj En-Naqoura	M	H	H
Borj Rahhal	M	MH	M	Boustane	M	MH	M	Btaychiyeh	M	H	MH
Chaaitiye	M	H	M	Chameh	M	H	MH	Chehabiye	M	M	M
Chehour	M	M	M	Chihine	ML	MH	M	Debaal Sour	M	MH	M
Deir Amess	ML	M	M	Deir Kifa	M	M	M	Deir Qanoun El-Ain	M	E	H
Deir Qanoun El-Naher	M	MH	M	Derdghaiya	M	M	M	Dhayra	M	H	MH
Halloussiyeh	M	MH	M	Hamoul	M	H	H	Hanaouey	M	MH	M
Henniye	M	E	H	Hmairi Sour	M	MH	M	Iskandarouna Sour	M	H	H
Jbal El Botom	M	M	M	Jebbin	M	H	M	Jennata	M	MH	M
Jijim	M	H	MH	Jouaiya	M	M	M	Kneisset Sour	M	H	M

Maarake	M	MH	M	Maaroub	M	MH	M	Majadel	M	M	M
Majdalzoun	M	H	MH	Mansouri Sour	M	E	H	Marnba	M	M	M
Marouahine	ML	M	M	Mazraat El-Zalloutiy	M	H	M	Mazraat Mechref	M	M	M
Mazraat Tayr Semhat	M	M	M	Mheilib	M	H	H	Neffakhiyeh	M	M	M
Niha Sour	M	M	M	Ouadi Jilo	M	M	M	Qana	M	MH	M
Qolaileh Sour	M	E	H	Rechknany	M	M	M	Rmadiyeh	M	MH	M
Selha Sour	M	M	M	Siddiqine	M	MH	M	Sour	M	H	H
Srifa	M	M	M	Tayr Debbe	M	MH	M	Tayr Felsay	M	M	M
Tayr Harfa	M	H	MH	Touayri	M	M	M	Toura	M	MH	M
Yanouh Sour	M	MH	M	Yarine	M	E	M	Zebqine	M	M	M

Saida

Municipality	14-Dec	15-Dec	16-Dec	Municipality	14-Dec	15-Dec	16-Dec	Municipality	14-Dec	15-Dec	16-Dec
Aanqoun	M	M	M	Aaqtanit	M	M	M	Aarab Ej-Jall	M	M	M
Aarab Tabbaya	M	M	M	Abra Saida	M	M	M	Adloun	M	MH	MH
Adousiyeh	M	M	M	Ain-El-Deleb	M	M	M	Arzai	M	MH	M
Babliyah	M	M	M	Barty	M	M	M	Bissariyeh	M	M	M
Bnaafoul	M	M	M	Bqosta	M	M	M	Bramiy --	M	M	M
Daoudiyeh	M	M	MH	Dareb El-Sim	M	M	M	Erkay	M	M	M
Ghassanieh	M	M	M	Ghazieh	M	M	M	Hajeh	M	M	M
Haret Saida	M	M	M	Hartiyeh	M	M	M	Hlaliye Saida	M	M	M
Insariyat	M	M	M	Jazira Saida	M	MH	MH	Kafar Bit	M	M	M
Kaoutariyet El-Siyad	M	M	M	Kfar Chellal	M	M	M	Kfar Hatta Saida	M	M	M
Kfar Milke Saida	M	M	M	Khartoum	M	M	M	Khaziz	M	M	M
Khirbet Ed-Douair Sa	M	M	M	Khirbet El-Bassal	M	M	M	Khrayeb Saida	M	M	M
Loubieh	M	M	M	Maghdouche	M	M	M	Majdelyoun	M	M	M
Matariyet El-Choumar	M	M	M	Matayriyeh	M	M	M	Mazraat 'Mseileh	M	M	M
Mazraat 'Snaiber	M	M	M	Mazraat Aarab Soukka	M	M	M	Mazraat Deir Taqla	M	M	M
Mazraat El Yahoudiye	M	MH	H	Mazraat El-Housseini	M	M	M	Mazraat El-Mhaydaleh	M	M	M
Mazraat El-Ouasta	M	MH	MH	Mazraat Jamjim	M	M	M	Mazraat Kaoutariyet	M	M	M
Mazraat Kfar Badda	M	M	MH	Mazraat Oussamiyat	M	M	M	Mazraat Sari	M	M	MH
Mazraat Sinai	M	M	M	Meemariyeh	M	M	M	Merouaniyeh	M	M	M
Miyeh ou Miyeh	M	M	M	Najjariyeh	M	M	M	Qaaqaiyat El-Snaouba	M	M	M
Qnarit	M	M	M	Qraiye Saida	M	M	M	Saida Ed-Dekermane	M	M	M
Saida El-Oustani	M	M	M	Saida El-Qadimeh	M	M	M	Saida Kefraya	M	M	M
Saksakiyeh	M	M	M	Salhie Saida	M	M	M	Sarafand	M	M	M
Sfenta	M	M	M	Tafahta	M	M	M	Tanbourit	M	M	M
Tebna	M	M	M	Zaghdraiya	M	M	M	Zeita	M	M	M
Zrariyeh	M	M	M								

Jezzine

Municipality	14-Dec	15-Dec	16-Dec	Municipality	14-Dec	15-Dec	16-Dec	Municipality	14-Dec	15-Dec	16-Dec
Ain El-Mir (El Estab	M	M	M	Anane	M	M	ML	Aramta	M	M	M
Ariya	ML	M	ML	Aychiyeh	M	M	M	Azour	M	M	ML
Baba	M	M	ML	Baysour Jezzine	M	M	M	Benoueteh Jezzine	M	M	ML
Bhannine	ML	M	ML	Bisri	M	M	L	Bkassine	L	M	ML
Bouslaya	M	M	M	Btedine El-Leqech	M	M	ML	Chbail	M	M	M
Choualiq Jezzine	M	M	M	Dahr Ed-Deir	M	M	M	Deir El Qattine	M	M	M

Demachqiyeh	M	M	M	Ghabbatiyeh	ML	M	ML	Harf Jezzine	ML	M	ML
Hassaniyeh	M	M	M	Haytouleh	M	M	M	Haytura	M	M	M
Hidab	M	M	M	Homsiyeh	M	M	ML	Jabal Toura	M	M	M
Jarmaq	M	M	M	Jensnaya	M	M	M	Jernaya	M	M	M
Jezzine	M	M	M	Karkha	M	M	M	Kfar Falous	M	M	M
Kfar Houna	ML	M	M	Kfar Jarrah	M	M	M	Lebaa	M	M	M
Louayzet Jezzine	M	M	M	Machmouche	L	M	ML	Mahmoudiyeh Jezzine	M	M	M
Maknounye Jezzine	M	M	M	Maraat Ouazaiyeh	M	M	M	Mazraat Daraya	M	M	M
Mazraat El-Aarqoub	M	M	M	Mazraat El-Mathane	M	M	L	Mazraat El-Rahbane	M	M	M
Mazraat Khallet Khaz	M	M	M	Mazraat Louzid (Loua	M	M	M	Mazraat Qrouh	M	M	M
Mazraat Tamra	M	M	M	Mazraat Zighrine Jez	M	M	M	Mazraat	M	M	M
Mharbiyeh	M	M	M	Midane Jezzine	ML	M	ML	Mjeydel Jezzine	M	M	M
Mlikh	M	M	M	Mrach El-Hbasse	M	M	M	Ouadi Baanqoudaine	M	M	M
Ouadi El-Laymoun	M	M	M	Ouardiyeh	M	M	M	Qabaa Jezzine	M	M	M
Qatrani	M	M	M	Qaytouleh	M	M	M	Qtaleh Jezzine	M	M	L
Rihane Jezzine	M	M	M	Rimat	M	M	M	Roum	M	M	M
Roummanet	M	M	M	Sabbah	L	M	ML	Saydoun	M	M	M
Sfaray	M	M	ML	Snaya	M	M	M	Sojoud	M	M	M
Srayri	M	M	M	Taaid	M	M	ML	Wadi Jezzine	ML	M	ML
Zhalta	M	M	M								

Bekaa

West Bekaa

Municipality	14-Dec	15-Dec	16-Dec	Municipality	14-Dec	15-Dec	16-Dec	Municipality	14-Dec	15-Dec	16-Dec
Aammiq BG	M	M	M	Ain El Tineh BG	M	M	M	Ain Zebdeh	M	M	M
Ana	M	M	M	Aytanit	ML	M	M	Baaloul BG	M	M	M
Bab Mareh	M	M	M	Chouberqiye Aammiq	M	M	M	Dakoue	M	M	M
Deir Ain El-Jaouze	M	M	M	Deir Tahniche	M	M	M	Ghaza	M	M	M
Harime El-Soughra	M	M	M	Hoch Harimeh	M	M	M	Jazira BG	M	M	M
Jib Jennine	M	M	M	Kamed-El-Laouz	M	M	M	Kefraya BG	ML	M	M
Khiara El Atika	M	M	M	Khiara	M	M	M	Khirbet Qanafar	M	M	M
Lala	M	M	M	Lebbaya BG	M	M	M	Loussa	M	M	M
Machghara	M	M	M	Manara (Hammar) BG	ML	ML	ML	Mansoura BG	M	M	M
Marej BG	M	M	M	Maydoun	M	M	M	Ouaqf BG	M	M	M
Qaraaoun	M	M	M	Qelya	M	M	M	Raouda (Istabel)	M	M	M
Saghbine	ML	M	M	Sohmor	M	M	M	Soltan Yacoub el Ara	M	M	M
Souairy	M	M	M	Sultan Yaacoub	M	M	M	Tal Znoun	M	M	M
Yehmor BG	M	M	M	Zilaya	M	M	M				

Zahle

Municipality	14-Dec	15-Dec	16-Dec	Municipality	14-Dec	15-Dec	16-Dec	Municipality	14-Dec	15-Dec	16-Dec
Aanjar (Haouch Mouss	M	M	M	Ablah	M	M	M	Ain Kfarzabad	M	M	ML
Ali-El-Nahri	M	M	M	Bar Elias	M	M	M	Bouarej	M	M	M
Cheberqiyet Tabet	M	M	M	Chtaura	M	M	M	Deir El Ghazal	M	M	ML
Delhamiyet Zahle	M	M	M	Ferzol	M	M	M	Haouch El-Ghanam	M	M	M
Haouch Es-Siyadeh	M	M	M	Haouch Hala	M	M	M	Haouch Mandara	M	M	M

Haouch Qayssar	M	M	M	Hezerta	M	M	M	Hosh Moussa	M	M	M
Jdita	M	M	M	Kfarzabad	M	M	M	Ksara	M	M	M
Majdel Aanjar	M	M	ML	Makssi	M	M	M	Massa	M	M	ML
Mazraat Er-Remtaniye	M	M	M	Mrayjat Zahle	M	M	M	Mzaraa Zahle	M	M	M
Nabi Ayla	M	M	M	Nasriyet Rizk	M	M	ML	Nasriyet Zahle	M	M	M
Niha Zahle	M	M	M	Ouadi Ed-Deloum	M	M	M	Ouadi El-Arayech	M	M	M
Qaa El Rim	M	M	M	Qab Elias	M	M	M	Qousaya	M	M	M
Rhit	M	M	M	Riyak	M	M	M	Saadnayel	M	M	M
Taal El-Akhdar	M	M	M	Taalbeya	M	M	M	Taanayel	M	M	M
Talamara	M	M	M	Tcheflik Edde Haouch	M	M	M	Tcheflik Qiqano	M	M	M
Terbol Zahle	M	M	M	Touaite Zahle	M	M	M	Zahle Aradi	M	M	M
Zahle El-Berbara	M	M	M	Zahle El-Maallaqa	M	M	M	Zahle El-Midane	M	M	M
Zahle Er-Rassiye	M	M	M	Zahle Haouch El-Ouma	M	M	M	Zahle Haouch El-Ouma	M	M	M
Zahle Haouch Ez-Zara	M	M	M	Zahle Maalqa Aradi	M	M	M	Zahle Mar Antonios	M	M	M
Zahle Mar Elias	M	M	M	Zahle Mar Gerios	M	M	M	Zahle Saydet En-Naja	M	M	M
Zebdoul	M	M	M								

Rachaiya

Municipality	14-Dec	15-Dec	16-Dec	Municipality	14-Dec	15-Dec	16-Dec	Municipality	14-Dec	15-Dec	16-Dec
Ain Arab Rachaiya	M	M	L	Ain Ata	ML	ML	L	Ain Harche	M	M	L
Aqabe Rachaya	M	M	L	Ayha	M	M	L	Ayta El Fokhar	M	M	L
Bakifa Rachaya	M	M	L	Bakka	M	M	L	Beit Lahya	M	M	L
Bireh Rachaiya	M	M	ML	Daher El Ahmar	M	M	L	Deir El-Achayer	ML	M	L
Heloua Rachaiya	ML	M	L	Hoch El Qannabeh Rac	ML	ML	L	Kaoukaba Bou Arab	M	M	L
Kfar Danis	M	M	L	Kfar Mechki	M	M	ML	Kfar Qouq	ML	M	L
Kherbet Rouha	M	M	ML	Majdel Balhiss	M	M	M	Mdoukha	M	M	L
Mhaydseh Rachaiya	M	M	ML	Nabi Safa	M	M	M	Rachaiya	M	M	L
Rafid Rachaiya	M	M	ML	Selsata (Mazraat Dei	L	L	L	Tannoura	M	M	L
Yanta	ML	M	L								

Beyrouth

Beyrouth

Municipality	14-Dec	15-Dec	16-Dec	Municipality	14-Dec	15-Dec	16-Dec	Municipality	14-Dec	15-Dec	16-Dec
Achrafieh	M	H	M	Ain el-Mreisse	M	H	M	Bachoura	M	H	M
Beirut Central Distr	M	H	M	Marfai	M	H	M	Mazraa	M	H	M
Medaouar	M	H	M	Minet el-Hosn	M	H	M	Mwssaitbeh	M	H	M
Ras Beirut	M	H	M	Rmeil	M	H	M	Saifi	M	H	M
Zqaq el-Blat	M	H	M								