

# Lebanon Fire Risk Bulletin



CIVIL DEDEFENCE

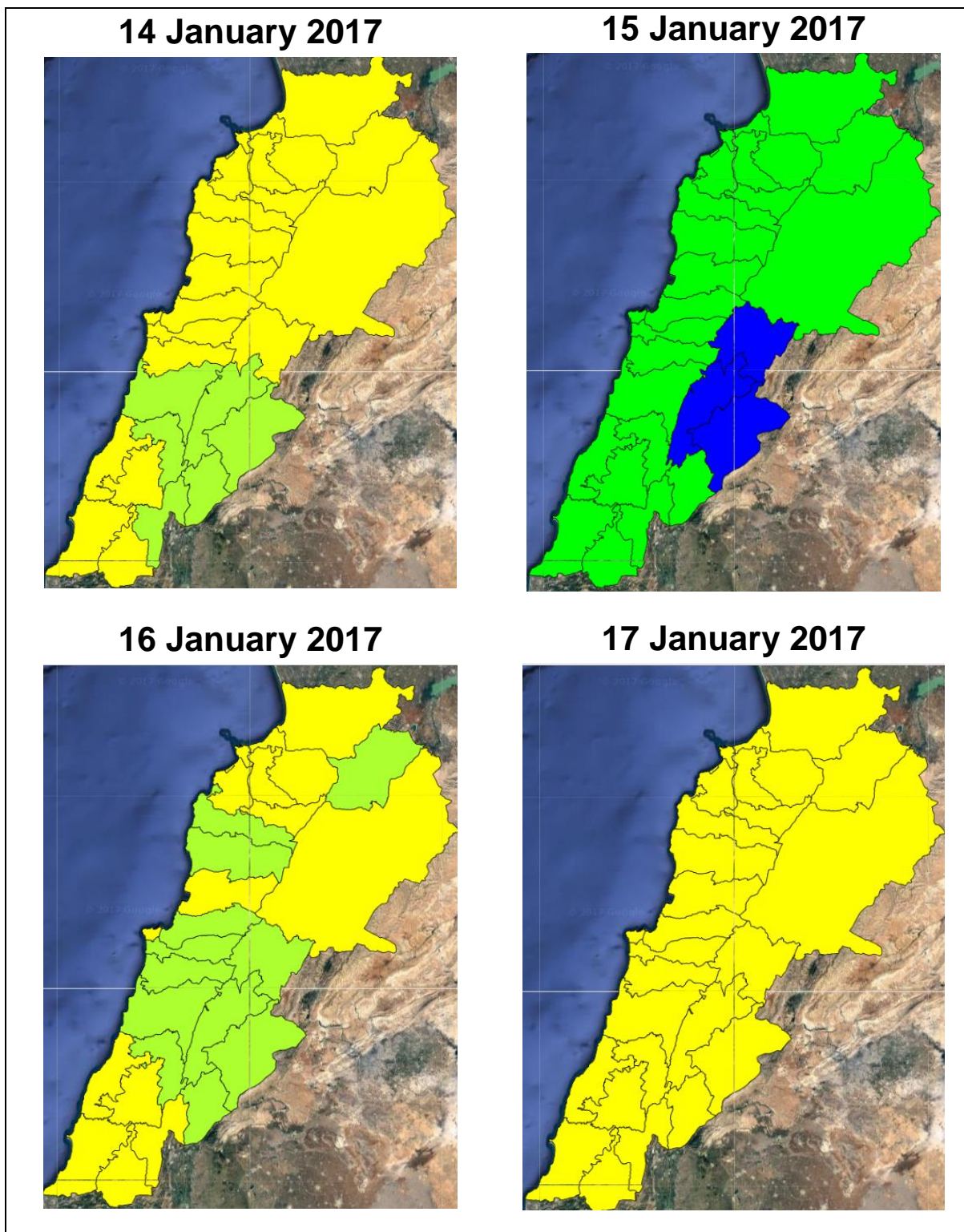
*Refer to cadast condition.*

*General description of potential fire risk situation*

Symbol	Level of risk	Meaning and actions
VL	Very low	Very low fire risk. Controlled burning operations can be hardly executed due to high fuel moisture content. Normally wildfires self-extinguish.
L	Low	Low fire risk. Controlled burning operations can be executed with a reasonable degree of safety.
ML	Medium low	Medium-low fire risk. Controlled burning operations can be executed in safety conditions. All the fires need to be extinguished.
M	Medium	Medium fire risk. Controlled burning operations would be avoided. All the fires need to be very well extinguished.
M	Medium high	Controlled burning is not recommended. Open flame will start fires. Cured grasslands and forest litter will burn readily. Spread is moderate in forests and fast in exposed areas. Patrolling and monitoring is suggested. Fight fires with direct attack and all available resources.
H	High	Ignition can occur easily with fast spread in grass, shrubs and forests. Fires will be very hot with crowning and short to medium spotting. Direct attack on the head may not be possible requiring indirect methods on flanks. Patrolling and monitoring the territory is highly suggested.
E	Extreme	Ignition can occur also from sparks. Fires will be extremely hot with fast rate of spread. Control may not be possible during day due to long range spotting and crowning. Suppression forces should limit efforts to limiting lateral spread. Damage potential total. Patrolling and monitoring the territory is highly suggested.

**Beirut, 15 January 2017**

# FIRE RISK INDEX

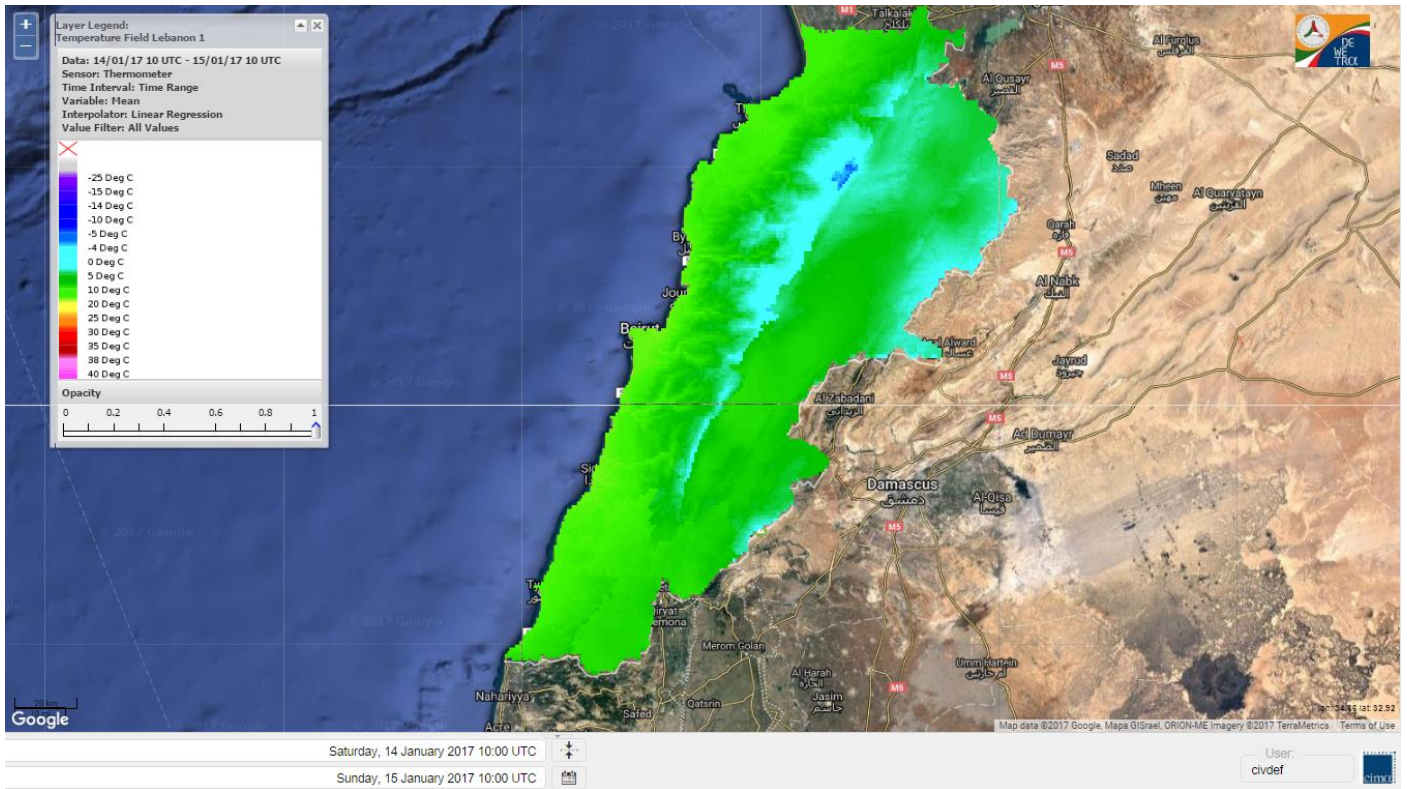


Layer Legend:  
Lebanon Wildfire Risk Index 1

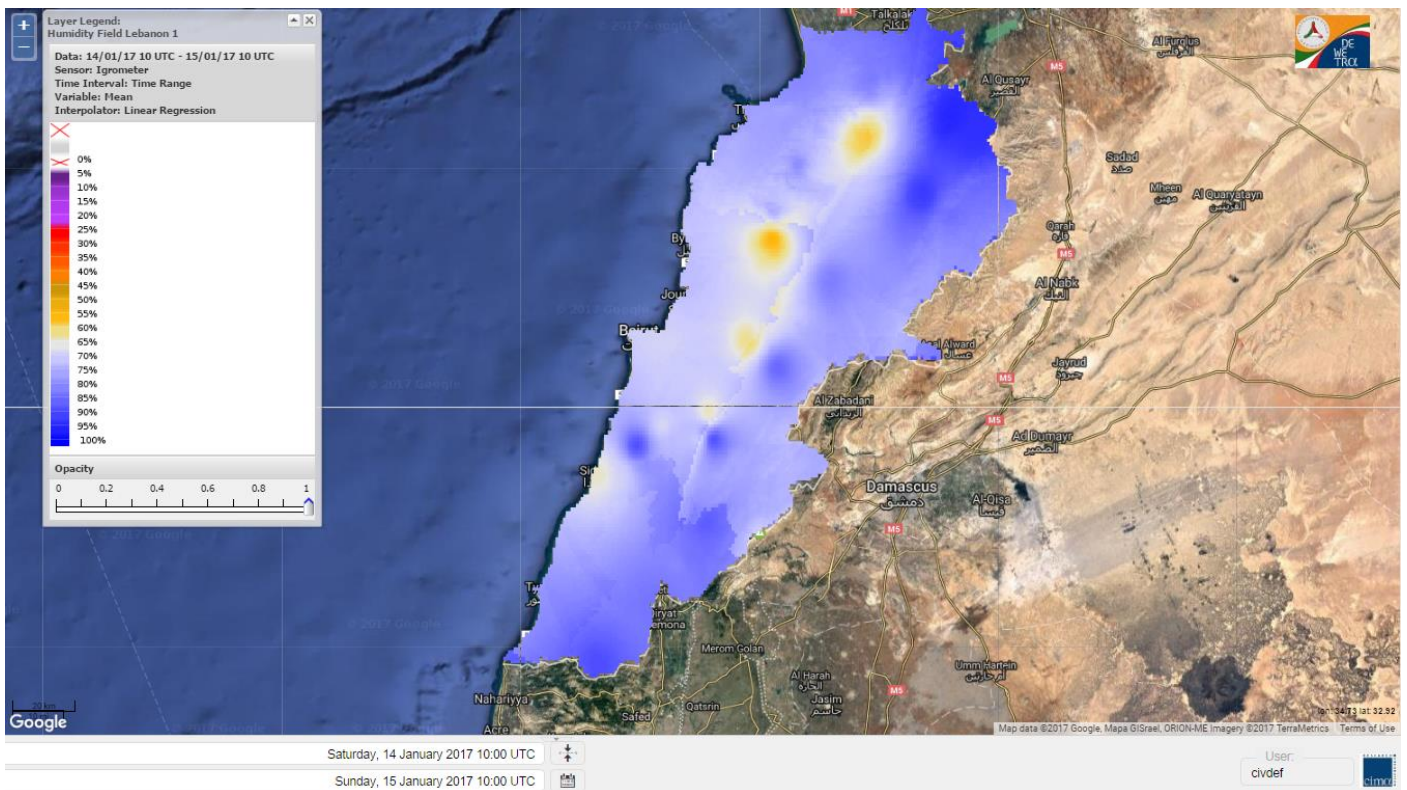
Data: Run: 15/01/2017 00:00. Forecast for 15  
Model: RISICO for the Republic of Lebanon  
Variable: Fire Weather Index  
Spatial Resolution: Caza

- VERY LOW
- LOW
- MEDIUM-LOW
- MEDIUM
- MEDIUM-HIGH
- HIGH
- EXTREME

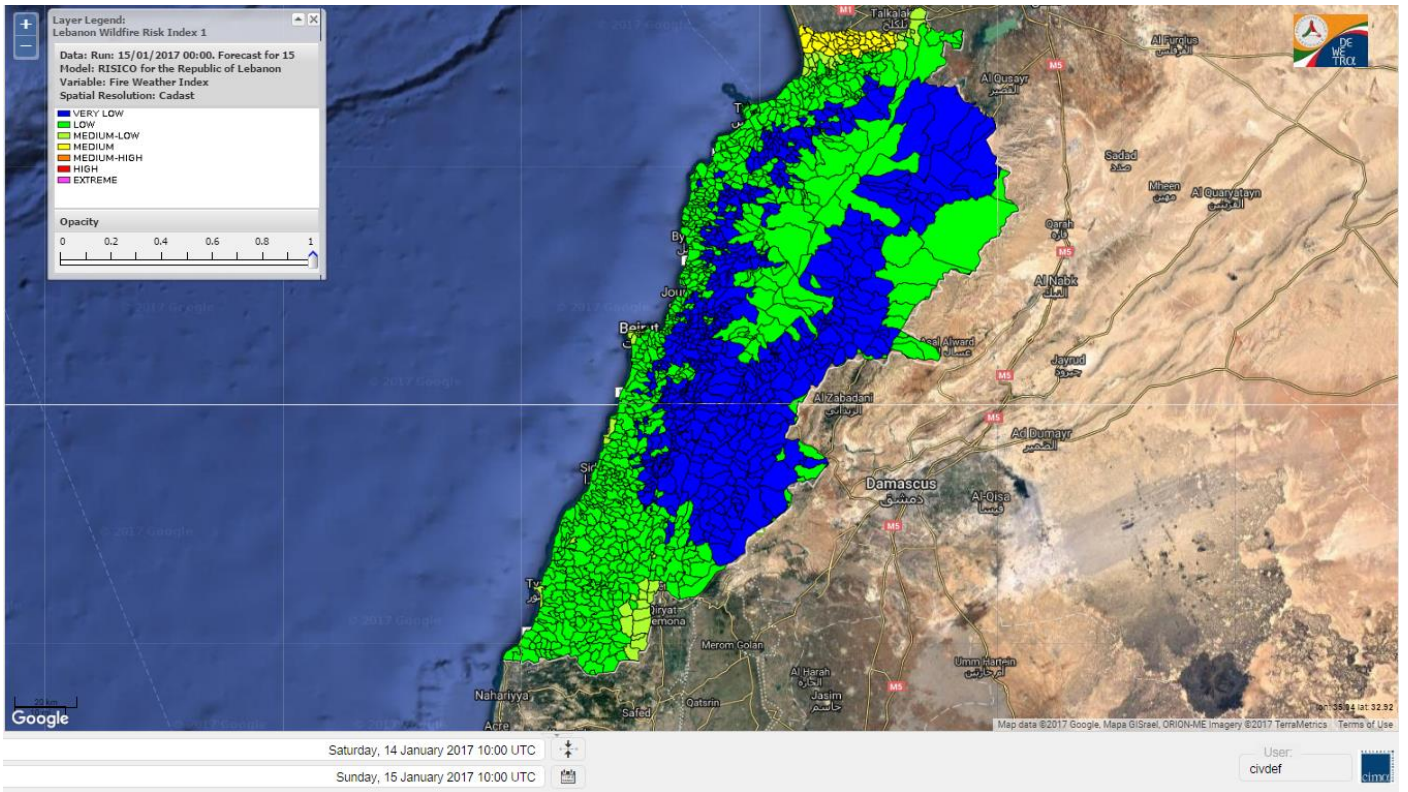
# Lebanon temperature for 15 January 2017



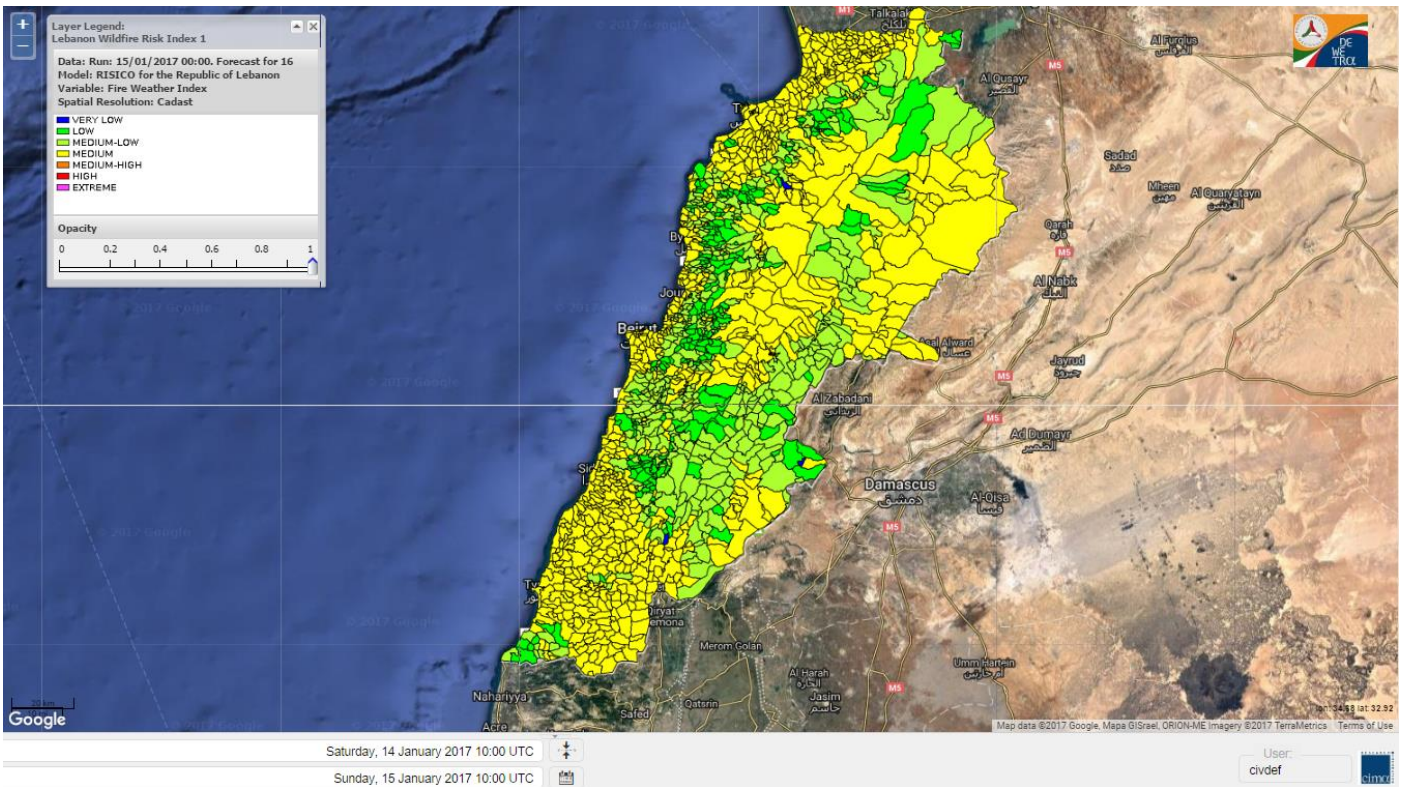
# Lebanon humidity for 15 January 2017



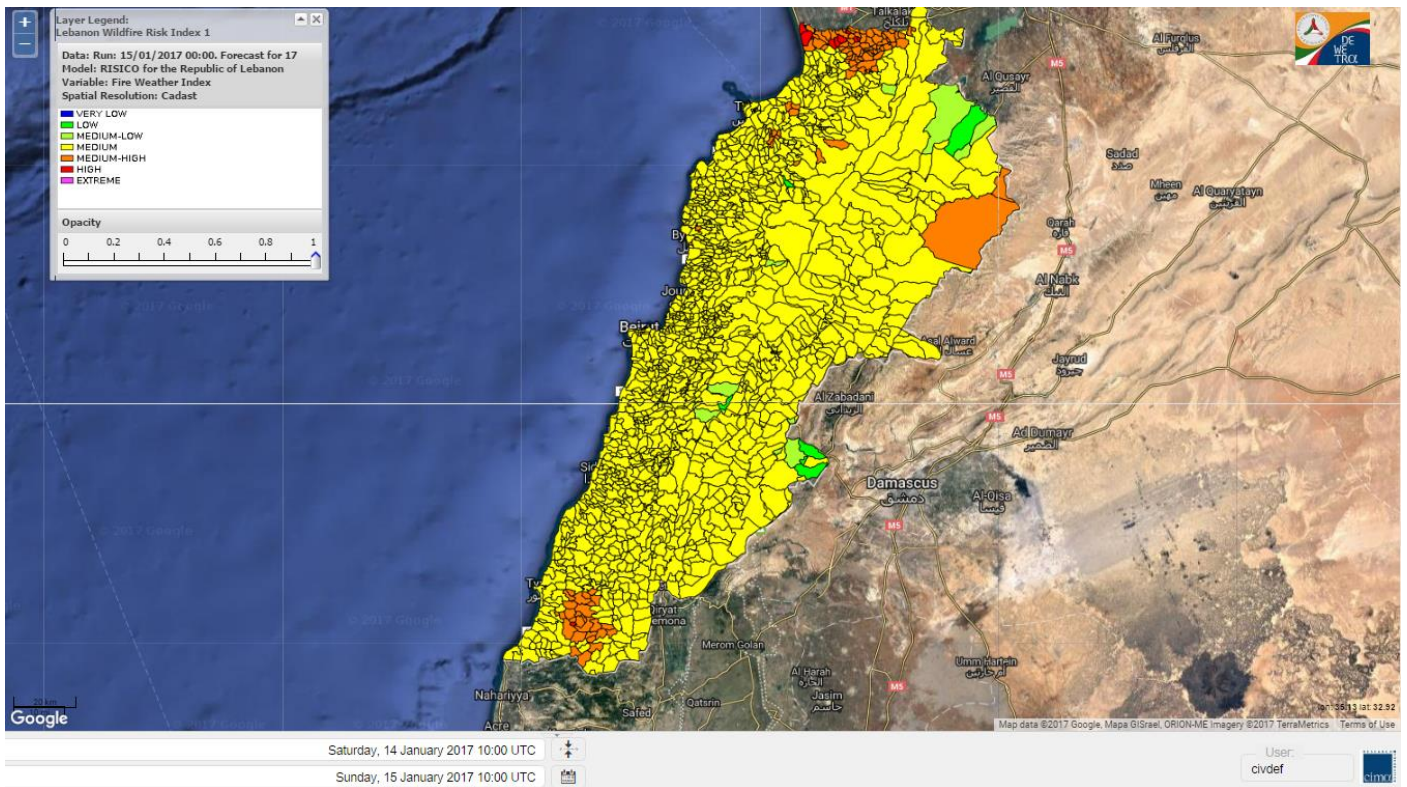
# Lebanon for 15 January 2017



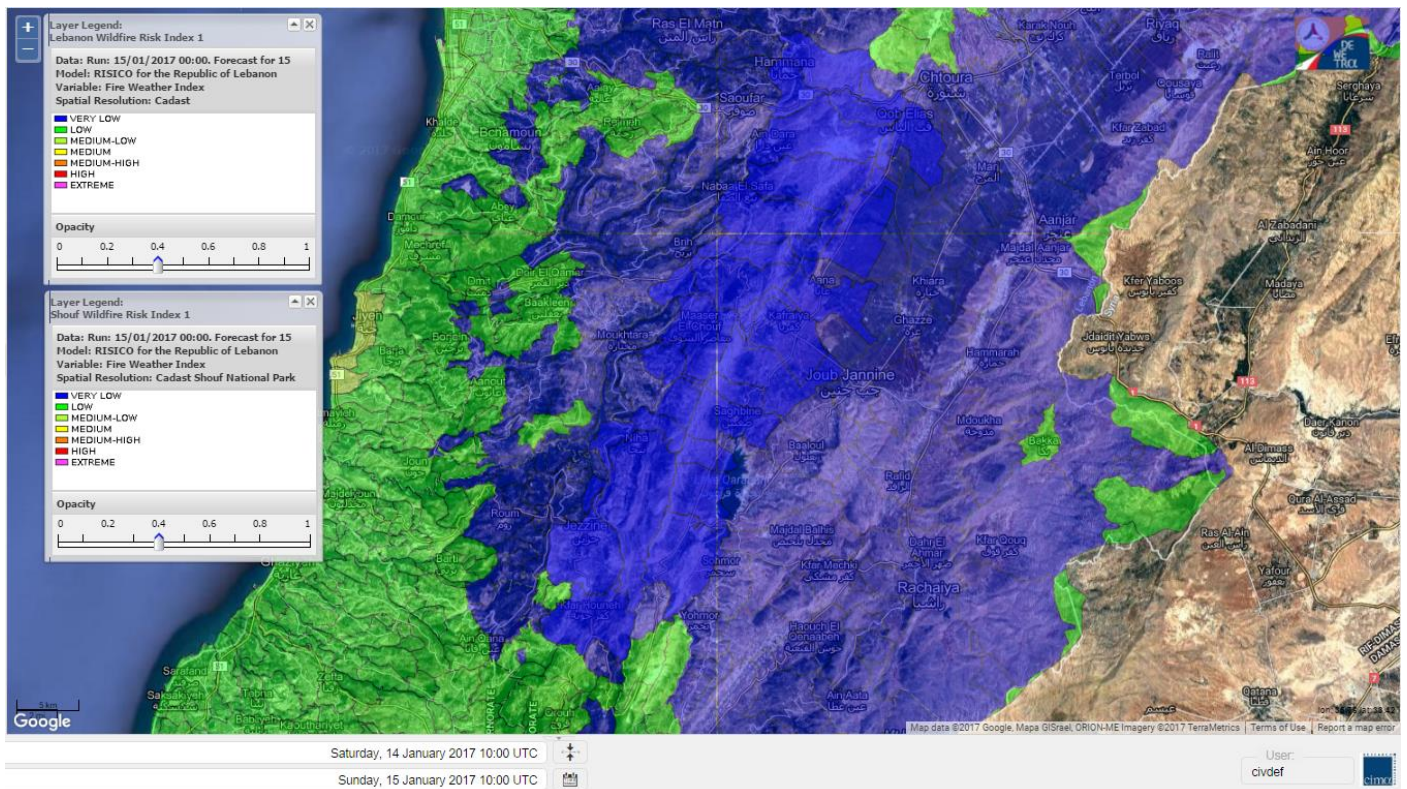
# Lebanon for 16 January 2017



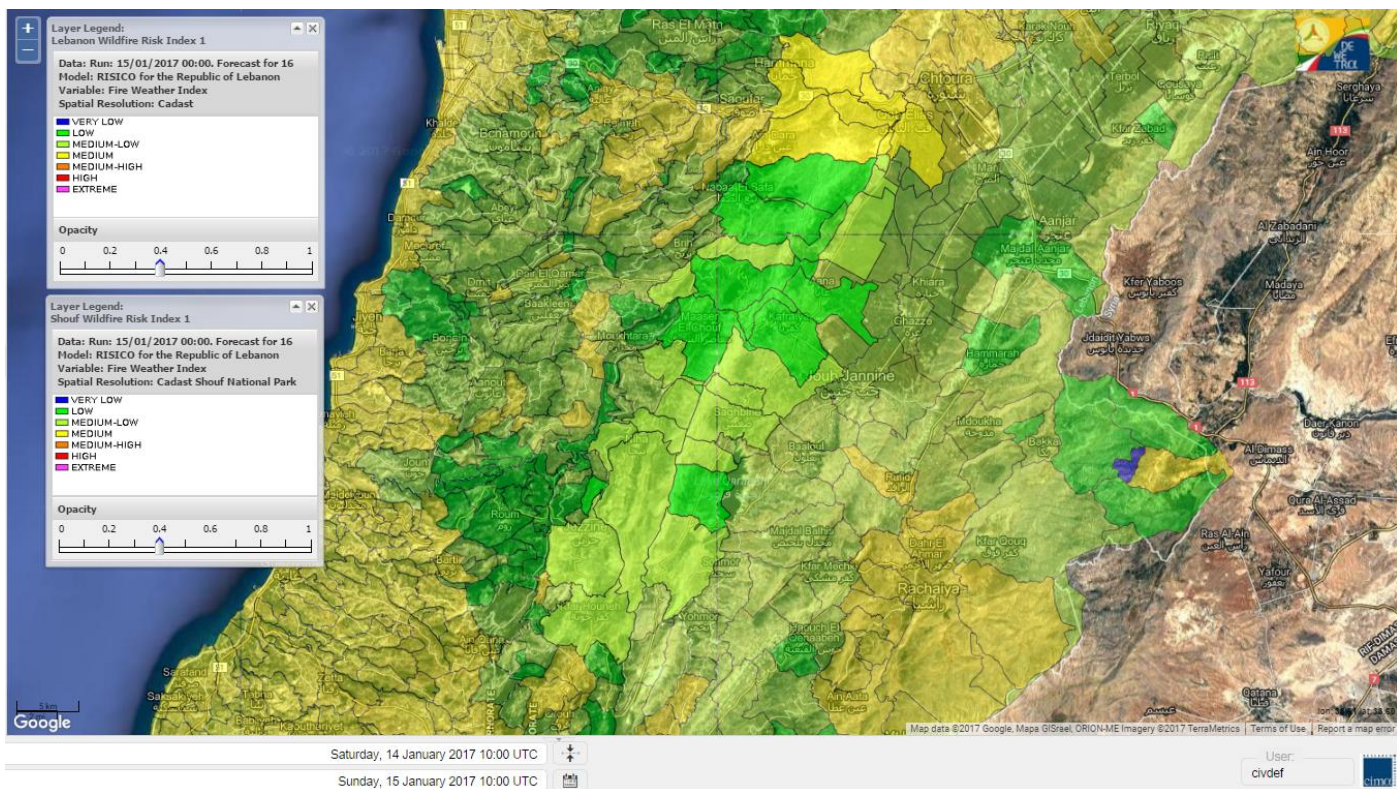
# Lebanon for 17 January 2017



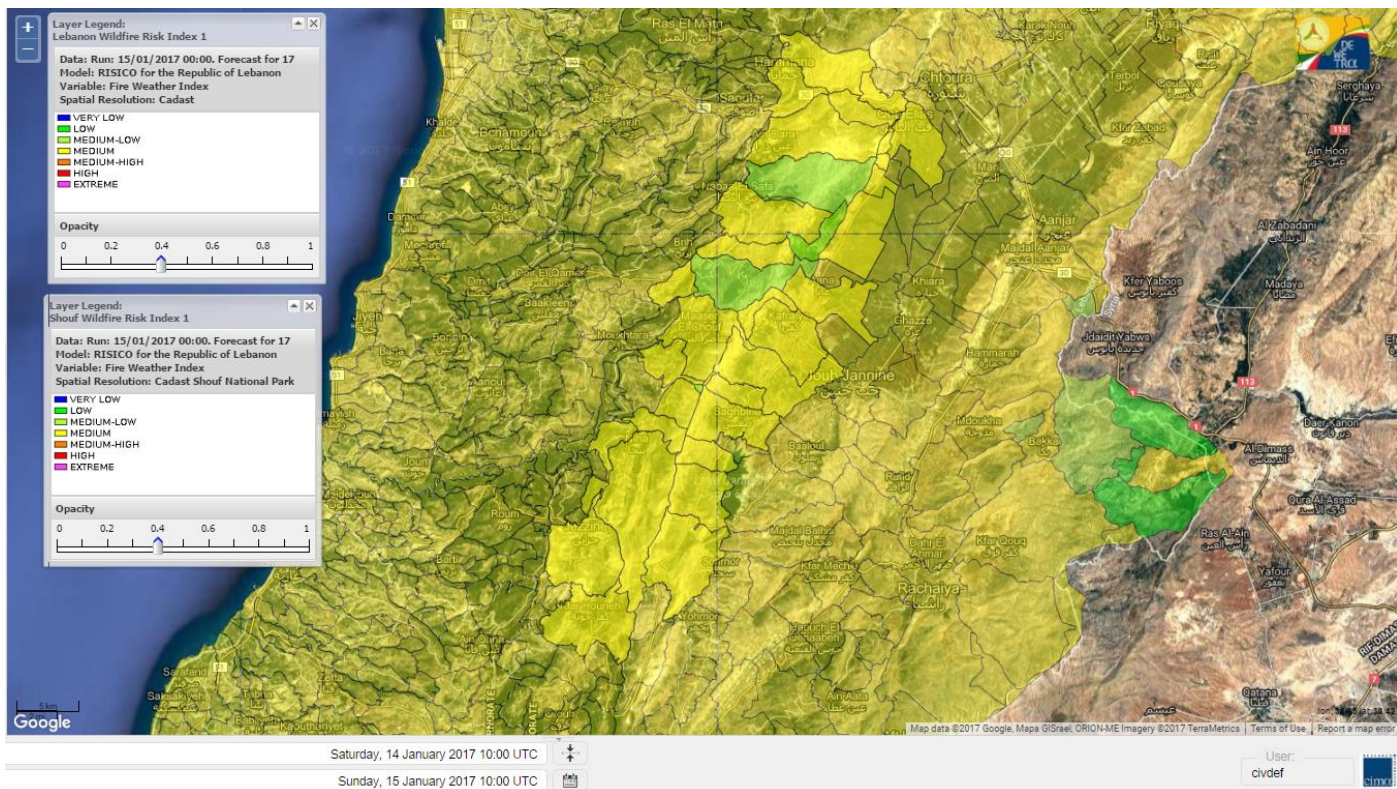
# Shouf Biosphere Reserve Forecast for 15 January 2017



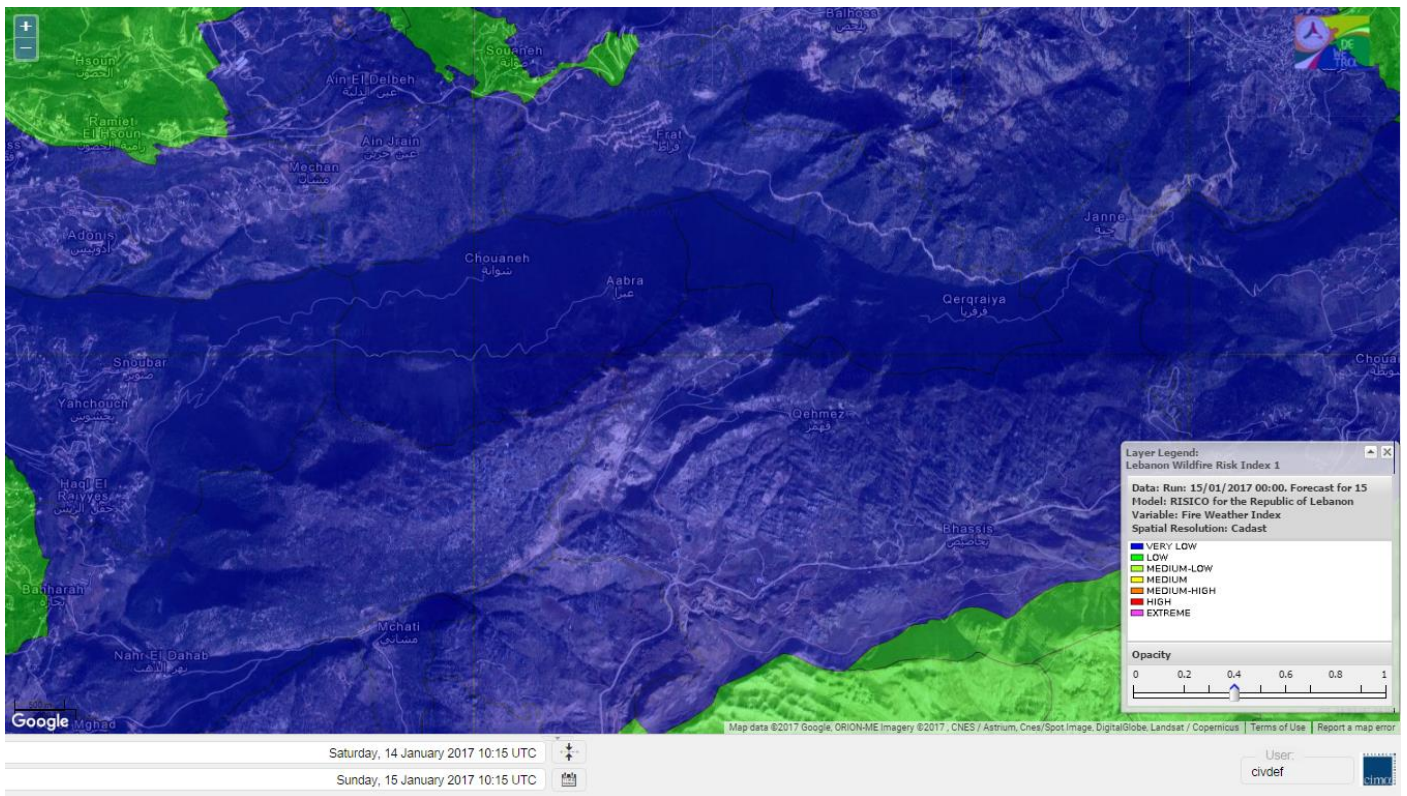
# Shouf Biosphere Reserve Forecast for 16 January 2017



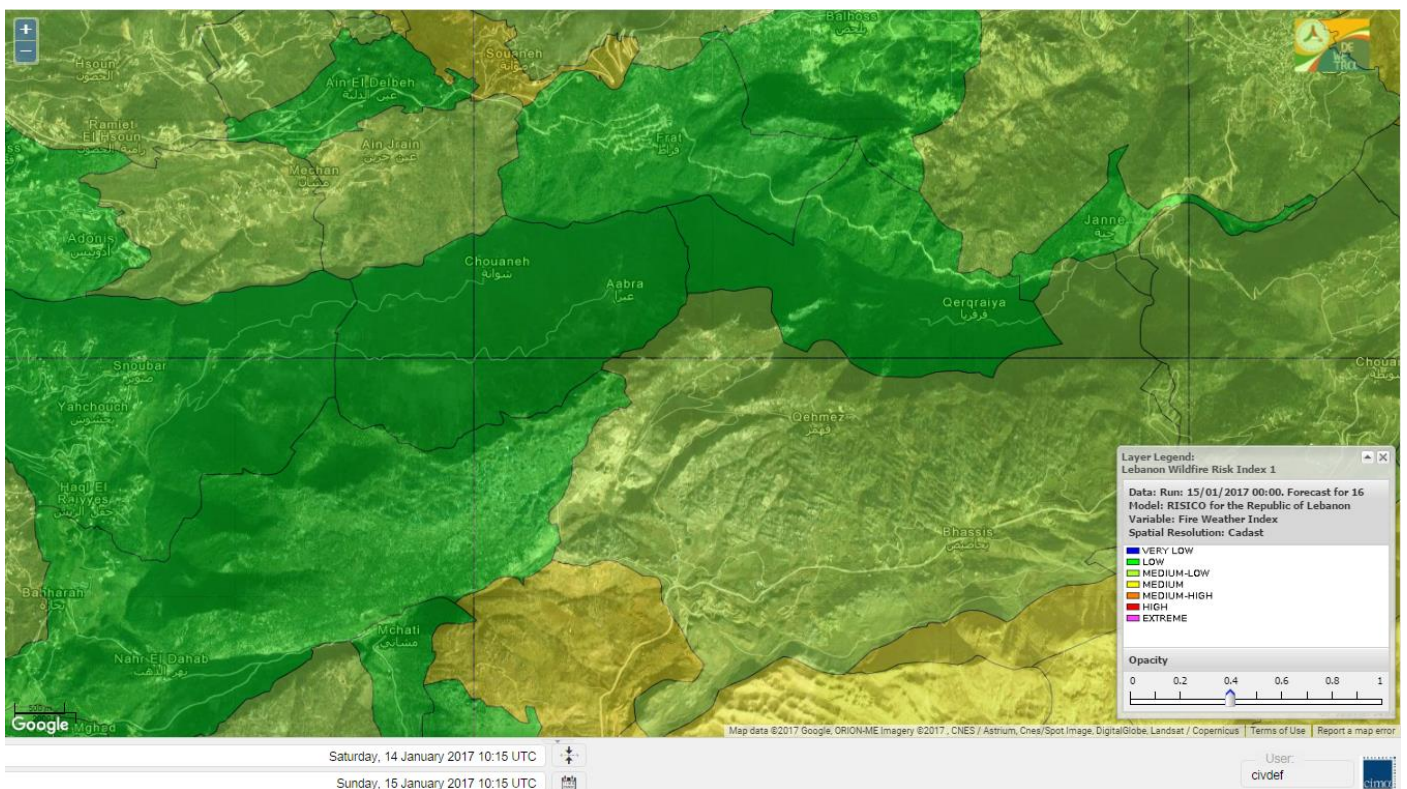
# Shouf Biosphere Reserve Forecast for 17 January 2017



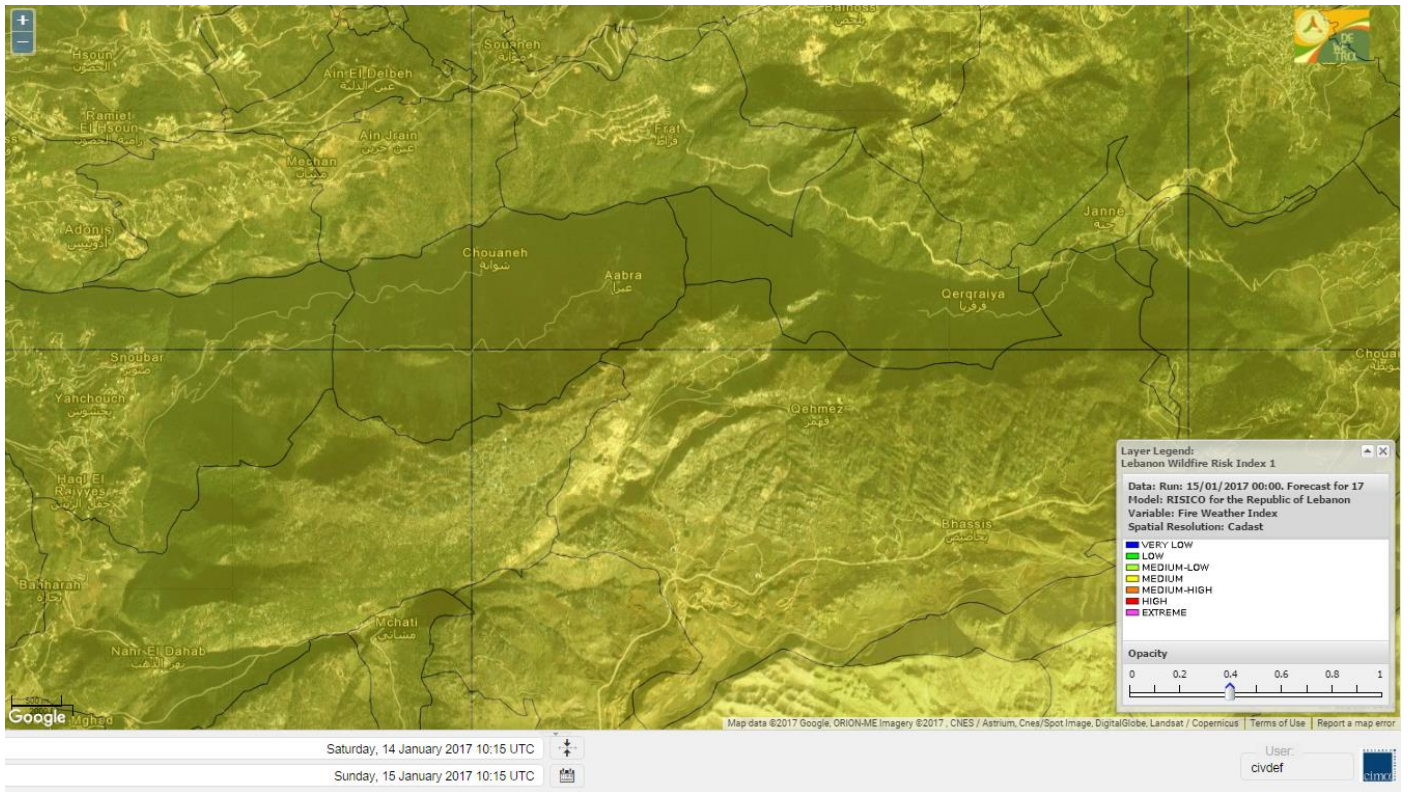
# Jabal Moussa Reserve Forecast for 15 January 2017



# Jabal Moussa Reserve Forecast for 16 January 2017



# Jabal Moussa Reserve Forecast for 17 January 2017





## Nord

### Koura

Municipality	15-Jan	16-Jan	17-Jan	Municipality	15-Jan	16-Jan	17-Jan	Municipality	15-Jan	16-Jan	17-Jan
Aaba	L	M	M	Afsaddiq	L	M	M	Ain Ekriane	L	M	M
Amioun	L	M	M	Anfeh	L	M	M	Badbhoun	L	M	M
Barghoun	L	M	M	Barsa	L	M	M	Batroumine	L	M	M
Bdebba	L	M	M	Bechmizine	L	M	M	Bednayeil El-Koura	L	ML	M
Bhabbouch El-Koura	L	M	M	Bkeftine	L	M	M	Bnehran	L	ML	M
Bqaiia El-Koura	L	M	M	Bsarma	VL	M	M	Btaaboura	L	M	M
Bterram	L	M	M	Btouratij	L	M	M	Bziza	L	M	M
Dar Beechtar	L	M	M	Dar Chmezzine	L	M	M	Deddeh	L	M	M
Deir El-Balamand	L	L	M	Fih	L	M	M	Hraiche	L	M	M
Ijdaabrine	L	ML	M	Kaftoun	L	M	M	Kefraya El-Koura	L	M	M
Kfarakka	VL	M	M	Kfarhata	VL	ML	M	Kfarhazir	L	M	M
Kfarkahel	L	M	M	Kfarsaroun	VL	M	M	Kosba	VL	M	M
Mejdel el-Koura	L	M	M	Nakhle	L	M	M	Qalhat	L	L	M
Ras Masqa	L	M	M	Rechdibbine	L	M	M	Zakroun	L	M	M
Zgharta El-Mtaouile	VL	L	M								

### Bcharre

Municipality	15-Jan	16-Jan	17-Jan	Municipality	15-Jan	16-Jan	17-Jan	Municipality	15-Jan	16-Jan	17-Jan
Aabdine	L	M	M	Bane	L	M	M	Barhelioun	L	ML	M
Bazooune	L	M	M	Becharre	L	M	M	Beit Menzer	VL	M	M
Billa	L	M	M	Blaouza	L	M	M	Bqaa Kafra	L	M	M
Bqerqacha	L	M	M	Breissat	L	M	M	Dimane	L	M	M
Hadath El Jobbeh	L	M	M	Hadchit	L	M	M	Hasroun	L	M	M
Mazraat Aassaf	VL	L	M	Mazraat Bani Saab	VL	M	M	Mchaa El-Jobbeh	L	M	M
Metrit	L	ML	M	Moghr El-Ahoual	L	ML	M	Ouadi Qannoubine	VL	VL	L
Qanat	L	M	M	Qnayer	VL	L	M	Tourza	VL	ML	M

### Batroun

Municipality	15-Jan	16-Jan	17-Jan	Municipality	15-Jan	16-Jan	17-Jan	Municipality	15-Jan	16-Jan	17-Jan
Aabrine	L	L	M	Aalali	L	ML	M	Aartiz	VL	L	M
Abdelli	VL	L	M	Ajdabra	L	L	M	Assia	VL	ML	M
Basbina	L	M	M	Batroun	L	M	M	Bcheleh	L	ML	M
Bechtoudar	VL	L	M	Beit Chlala	VL	L	M	Beit Kassab	VL	L	M
Bijdarfil	L	M	M	Bqesmaya	VL	ML	M	Chatine	VL	ML	M
Chebtin	VL	ML	M	Chekka	L	M	M	Daael	VL	L	M
Dahr Abi Yaghi	VL	L	M	Daraya El-Batroun	L	M	M	Deir Billa	VL	L	M
Deir Kfifane	L	M	M	Deir Mar Youhanna EL	VL	L	M	Deir Mar Youssef Jra	L	L	M
Douma	L	ML	M	Douq	VL	L	M	Eddeh El-Batroun	L	ML	M
Ftahat El-Batroun	VL	L	M	Ghouma	L	ML	M	Hadtoun	VL	ML	M
Hamat	L	L	M	Harbouna	VL	L	M	Hardine	VL	L	M
Helta	VL	L	M	Hery	L	M	M	Jebbla	VL	L	M
Jrabta El-Batroun	L	ML	M	Jrane El-Batroun	L	M	M	Kfar Aabida	L	ML	M
Kfar Halda	VL	L	M	Kfarb Shlaimane	VL	L	M	Kfarhatna	VL	L	M
Kfarhay	L	M	M	Kfarhelos	VL	L	M	Kfifane	L	M	M

Kfour El Arabi	L	M	M	Koubba	L	M	M	Kour	L	ML	M
Mar Mama	VL	L	M	Masrah	VL	L	M	Mehmarch	L	M	M
Mrah Chdid	L	ML	M	Mrah El Ziyat	L	ML	M	Mrah El-Hajj	VL	L	M
Nahle El-Batroun	VL	ML	M	Niha El-Batroun	L	M	M	Ouajh El-Hajjar	L	ML	M
Ouata Houb	VL	L	M	Qatnaaoun	L	ML	M	Racha	L	M	M
Rachana	L	ML	M	Rachkida	L	ML	M	Ram El-Batroun	VL	ML	M
Ras Nahhach	L	ML	M	Selaata	L	M	M	Sghar	L	ML	M
Smar Jbayl	L	ML	M	Sourat El-Batroun	VL	L	M	Tannourine El-Faouqa	L	M	M
Tannourine Et-Tahta	VL	L	M	Thoum	L	ML	M	Toula El-Batroun	L	ML	M
Zan	VL	ML	M								

## Zgharta

Municipality	15-Jan	16-Jan	17-Jan	Municipality	15-Jan	16-Jan	17-Jan	Municipality	15-Jan	16-Jan	17-Jan
Aachach	L	M	M	Aalma	L	M	M	Aarde	L	M	M
Aintourine	L	M	M	Arabet Qozhaya	VL	ML	M	Arde	L	M	M
Arjis	VL	M	M	Asnoun	VL	M	MH	Ayto	VL	ML	M
Basloukit	L	M	MH	Bchannine	L	M	M	Besebeel	VL	M	M
Bhairret Toula	VL	ML	M	Bnachee	VL	M	M	Boussit	L	M	M
Danha	L	M	M	Daraiya Zgharta	VL	M	M	Deir Jdeide	VL	M	MH
Ehden	L	M	M	Halan	L	M	MH	Hariq Zgharta	VL	M	MH
Houakir	VL	ML	M	Hraiqis	L	M	M	laal	VL	M	M
Ijbaa	L	M	M	Karm Saddeh	L	ML	M	Kfarchakhna	L	M	M
Kfardlaqous	VL	M	M	Kfarfou	VL	M	M	Kfarhata Zgharta	VL	M	MH
Kfarhoura	VL	M	M	Kfarsghab	VL	M	M	Kfaryachit	VL	M	MH
Kfarzaina	VL	M	M	Khaldiye	VL	M	MH	Mazraat Ajbeaa	VL	M	M
Mazraat Et-Teffah	VL	L	M	Mazraat Jneid	VL	M	M	Mejdlaiya Zgharta	L	M	M
Merh Kfarsghab	VL	M	M	Miryata	L	M	M	Miziara	VL	ML	M
Mzraat Kefraya	L	M	MH	Qorah Bach	VL	M	MH	Rachiine	VL	M	M
Ras Kifa	VL	M	M	Sakhra	VL	M	M	Sebhel Zgharta	L	M	M
Serhel	VL	L	M	Tallet Zgharta	L	M	M	Toula Zgharta	VL	ML	M
Zgharta	L	M	M								

## Minieh-Denniye

Municipality	15-Jan	16-Jan	17-Jan	Municipality	15-Jan	16-Jan	17-Jan	Municipality	15-Jan	16-Jan	17-Jan
Aasaymout	VL	L	M	Aaymar	VL	ML	M	Aazki	L	M	M
Ain El-Tineh-Miniyeh	L	ML	M	Assoun	VL	ML	M	Bakhaaoun	L	ML	M
Bchennata	L	M	M	Bechehhara	VL	L	M	Beddawi	L	M	M
Behouaita	VL	ML	M	Beit El Foqss	L	ML	M	Beit Haouik	L	M	M
Beit Zoud	VL	L	M	Bekaasafrine	L	M	M	Borj El Yahoudiyeh	L	M	M
Bqarsouna	L	ML	M	Btermaz	VL	L	M	Debaael	VL	L	M
Deir Ammar	L	M	M	Deir Nbouh	VL	ML	M	Haouaret-Miniyeh	L	ML	M
Haql el Azimeh	VL	L	M	Harf El Siyad	VL	L	M	Hazmiye-Miniyeh	VL	L	M
Izal	VL	M	M	Jarjour	VL	L	M	Jayroun	VL	L	M
Kahf El-Malloul	VL	L	M	Karm El-Moher	VL	ML	M	Kfar Binine	VL	ML	M
Kfarchalane	L	ML	M	Kfarhabou	L	M	M	Kharroub-Miniyeh	L	M	M
Mazraat El-Kreme	VL	L	M	Mazraat Ketrane	VL	ML	M	Merkebta	L	M	M
Minyeh	L	M	M	Mrah El Sfirat	VL	L	M	Mrah Sraj	VL	L	M
Mrebbine	L	M	M	Nabi Youcheaa	L	M	M	Nemrine	L	M	M

Qarhaiya	VL	ML	M	Qarne	VL	L	M	Qarsita	VL	L	M
Qattineh-Miniyeh	VL	L	M	Qemmamine	VL	L	M	Qraine	VL	L	M
Raouda-Aadoua	L	M	M	Rihaniyet-Miniyeh	L	M	M	Sfireh	VL	L	M
Sir Ed-Danniyeh	VL	L	M	Tarane	VL	L	M	Terbol-Miniyeh	L	M	MH
Zaghartaghriine	L	ML	M	Zouq Bhannine	L	M	M				

## Nabatiye

### Nabatiye

Municipality	15-Jan	16-Jan	17-Jan	Municipality	15-Jan	16-Jan	17-Jan	Municipality	15-Jan	16-Jan	17-Jan
Aabba	L	M	M	Aazzi	L	M	M	Adchit El-Chqif	L	M	M
Ain Bou Swar	VL	M	M	Ain Kana	L	M	M	Ali El-Taher	L	M	M
Ansar	L	M	M	Arab Salim	L	M	M	Arnoun	L	M	M
Bfaroue	L	M	M	Breyqaah	L	M	M	Charqiyeh	L	M	M
Choukine	L	M	M	Deir El Zahrani	L	M	M	Doueir El-Nabatiyeh	L	M	M
Habbouch El-Nabatiye	L	M	M	Hamra El-Nabatiyeh	L	M	M	Harouf El-Nabatiyeh	L	M	M
Hmaile	L	M	M	Houmin El Faouqa	L	M	M	Houmin El Tahta	L	M	M
Jarjough	L	ML	M	Jbaah El-Nabatiyeh	VL	ML	M	Jebchit	L	M	M
Kfar Djal El-Nabatiy	L	M	M	Kfar Remmane	L	M	M	Kfar Sir	L	M	M
Kfar Tebnit	L	M	M	Kfarfila	L	M	M	Kfour El-Nabatieh	L	M	M
Mayfadoun	L	M	M	Mazraat Bsaffour	L	M	M	Mazraat Chalbaal	L	M	M
Mazraat Dmoul	L	M	M	Mazraat El Khreibeh	L	M	M	Mazraat El-Bayad El-	L	M	M
Mazraat Kfarjaouz	L	M	M	Mazraat Qalaat Meiss	L	M	M	Nabatiyeh El-Fawka	L	M	M
Nabatiyeh Et-Tahta	L	M	M	Namiriyyeh	L	M	M	Qaaqaaiyet El Jisr	L	M	M
Qossaibeh El-Nabatiy	L	M	M	Roumine	L	M	M	Sarba El-Nabatieh	L	M	M
Sir El-Gharbiyeh	L	M	M	Toul	L	M	M	Yehmor El-Nabatiyeh	L	M	M
Zaoutar El Charkiyeh	L	M	M	Zaoutar El-Gharbiyeh	L	M	M	Zebdine El-Nabatiyeh	L	M	M
Zefta	L	M	M								

### Hasbaiya

Municipality	15-Jan	16-Jan	17-Jan	Municipality	15-Jan	16-Jan	17-Jan	Municipality	15-Jan	16-Jan	17-Jan
Aain Jarfa	VL	ML	M	Abou Qamha	L	M	M	Ain Qania	VL	ML	M
Bourghos	L	M	M	Chebaa	VL	M	M	Chouaya Hasbaya	VL	M	M
Dellafeh	L	M	M	Fardiss Hasbaiya	L	M	M	Hasbaya	VL	ML	M
Hbariyeh	L	ML	M	Kaoukaba Hasbaiya	L	M	M	Kfar Chouba	L	ML	M
Kfar Hamam	L	ML	M	Kfeir El-Zait	VL	ML	M	Khalwat Hasbaya	VL	L	M
Khreibet Hasbaiya	L	M	M	Majidiyeh Hasbaiya	L	M	M	Marj Ez-Zhour (Haouc	VL	L	M
Meri	L	M	M	Mimass	VL	ML	M	Rachaiya El-Fokhar	L	ML	M
Salaiyeb	L	M	M								

### Marjayoun

Municipality	15-Jan	16-Jan	17-Jan	Municipality	15-Jan	16-Jan	17-Jan	Municipality	15-Jan	16-Jan	17-Jan
Aalmane Marjaayoun	L	ML	M	Aamra	L	M	M	Adayseh Marjaayoun	ML	M	M
Adchit El-Koussair	L	M	M	Ain Aarab Marjaayoun	L	M	M	Bani Haiyann	ML	M	M
Blatt Marjaayoun	L	M	M	Blida	ML	M	M	Borj El-Moulouk	L	M	M
Boueyda Marjaayoun	L	M	M	Deir Mimass	L	M	M	Deir Siriane	L	M	M
Dibbine	L	M	M	Ebel El Saqi	L	M	M	Houla	ML	M	M
Houra	L	M	M	Kfar Kila	ML	M	M	Khiam Marjaayoun	L	M	M

Klayaa	L	M	M	Majdel Selem	ML	M	M	Marjaayoun	L	M	M
Markaba	ML	M	M	Mays El-Jabal	ML	M	M	Mazraat Doumiat	ML	M	M
Mazraat Sarada	L	M	M	Mhaibib	ML	M	M	Qabrikha	L	M	M
Qantara	L	M	M	Rab El-Thalathine	ML	M	M	Saouaneh Marjayoun	L	M	M
Taloussa	L	M	M	Taybeh Matjaayoun	ML	M	M	Touline	L	M	M

## Bent Jbail

Municipality	15-Jan	16-Jan	17-Jan	Municipality	15-Jan	16-Jan	17-Jan	Municipality	15-Jan	16-Jan	17-Jan
Ain-Ebel	L	M	M	Aitaroun	ML	M	M	Aynata Bint Jbeil	L	M	M
Ayta El-Chaeb	L	M	MH	Ayta El-Jabal	L	M	MH	Beit Lif	L	M	M
Beit Yahoun	L	M	MH	Bint Jbeil	L	M	M	Borj Qalaway	L	M	M
Braachit	L	M	M	Chakra	ML	M	M	Debel	L	M	MH
Deir Antar	L	M	M	Froun	L	M	M	Ghandouriyeh Bint Jb	L	M	M
Hanine	L	M	M	Hariss	L	M	MH	Hdatha	L	M	MH
Jmeyjmeh	L	M	M	Kafra Bint Jbeil	L	M	MH	Kfar Dounine	L	M	M
Khirbet Selm	L	M	M	Kounine	L	M	M	Maroun El Ras	L	M	M
Qalaway	L	M	M	Qaouzah	L	M	M	Qatmoun	L	M	M
Ramya Bint Jbeil	L	M	MH	Rchaf	L	M	MH	Rmeich	L	M	M
Safad Al Battikh	L	M	M	Salhaneh	L	M	M	Serbine	L	M	MH
Sultanieh Bint Jbeil	L	M	M	Tibnine	L	M	M	Tiri	L	M	M
Yaroun	L	M	M	Yater	L	M	MH				

## Mont Liban

### Jbail

Municipality	15-Jan	16-Jan	17-Jan	Municipality	15-Jan	16-Jan	17-Jan	Municipality	15-Jan	16-Jan	17-Jan
Aabeydat	L	L	M	Aalita	L	L	M	Aamchit	L	M	M
Aarab El-Lahib	VL	M	M	Aarasta	VL	L	M	Adonis Jbeil	VL	L	M
Afqa Jbeil	VL	L	ML	Ain El Delbeh Jbeil	VL	L	M	Ain El-Ghouayba	VL	ML	M
Ain Jrain	VL	ML	M	Ain Kfah	L	M	M	Almat El Chemaliyat	VL	ML	M
Almat El-Jenoubiya	VL	ML	M	Aqoura	L	M	M	Bayzoun	VL	ML	M
Bchille Jbeil	L	ML	M	Bechtlida	VL	L	M	Behdaydat	L	ML	M
Beit Habbaq	L	ML	M	Bejjeh	L	ML	M	Bekhaaz	L	ML	M
Berbara Jbeil	L	M	M	Bintael	VL	ML	M	Birket Hjoula	VL	L	M
Blatt Jbeil	L	M	M	Boulhos	VL	L	M	Breyj Jbeil	VL	L	M
Chamat	L	M	M	Chikhane	L	M	M	Chmout	L	L	M
Eddeh Jbeil	L	M	M	Ehmej	L	ML	M	Fatre	VL	L	M
Ferhet	L	M	M	Fghal	L	L	M	Frat	VL	L	M
Ghabat	VL	ML	M	Ghalboun	L	ML	M	Gharzouz	L	M	M
Ghofrine	L	M	M	Habil	VL	L	M	Halate	L	M	M
Haqel	VL	L	M	Hbaline	L	ML	M	Hboub	L	M	M
Hdeine	L	M	M	Hema Er-Rehban	L	M	M	Hema Mar Maroun Aann	L	M	M
Hjoula	VL	L	M	Hosrayel	L	ML	M	Hsarat	L	ML	M
Hsoun	L	ML	M	Jaj	L	M	M	Janne	VL	L	M
Jbeil	L	M	M	Jeddeyel Jbeil	L	M	M	Jlisse	VL	L	M
Jouret El-Qattine	L	ML	M	Kfar Baal Annaya	VL	L	M	Kfar Kidde	L	ML	M
Kfar Kouas	L	ML	M	Kfar Mashoun	L	M	MH	Kfoun	VL	L	M

Kharbe Jbeil	L	M	M	Laqlouq	L	M	M	Lassa	VL	ML	M
Lehfed	VL	L	M	Maad	L	M	M	Mar Sarkis	L	M	M
Mastita	L	M	M	Mayfouq	VL	ML	M	Mazraat El Siyad	L	M	M
Mazraat El-Maaden	VL	L	M	Mechane	VL	ML	M	Mechmech Jbeil	VL	L	M
Mehrin	L	M	M	Mejdel El-Akoura	L	ML	M	Mghayreh Jbeil	L	M	M
Mounsef	L	M	M	Nahr Ibrahim	L	M	M	Qahmez	VL	ML	M
Qartaba	VL	ML	M	Qartaboun	L	M	MH	Qattara Jbeil	VL	L	M
Qorqraya	VL	L	M	Ramout	L	ML	M	Ras Osta	VL	L	M
Rihane Jbeil	L	M	M	Sakiet El-Khayt	VL	ML	M	Saqi Richmaya	L	ML	M
Sebrine	VL	L	M	Seraita	VL	ML	M	Souane Jbeil	L	M	M
Tadmor	L	M	M	Tartej	L	M	M	Torzaiya	VL	ML	M
Yanouh Jbeil	VL	ML	M	Zibidine Jbeil	VL	ML	M				

## El Metn

Municipality	15-Jan	16-Jan	17-Jan	Municipality	15-Jan	16-Jan	17-Jan	Municipality	15-Jan	16-Jan	17-Jan
Aain El-Qabu	VL	L	M	Aain El-Qach	L	ML	M	Aain El-Teffaha	L	ML	M
Aain el-Safssaf El-M	VL	L	M	Abou Mizane	VL	ML	M	Ain Aar	L	M	M
Ain Alaq	VL	ML	M	Ain El-Kharroube	L	M	M	Ain El-Sendiane	VL	ML	M
Ain El-Zeitoune	VL	L	M	Ain Saadeh	VL	ML	M	Aintoura El-Matn	L	M	M
Amaret Chalhoub	L	M	M	Antelias	L	M	M	Atchaneh	VL	L	M
Ayroun	VL	ML	M	Baabdat	VL	L	M	Baouchariyeh	L	M	M
Baskinta	VL	M	M	Beit Chabab	VL	ML	M	Beit El-Char	L	M	M
Beit El-Kekko	L	M	M	Beit Mery	VL	ML	M	Bhersaf	VL	L	M
Bikfaya	VL	ML	M	Biyakout	L	M	M	Bnabil	VL	L	M
Bourj Hammoud	L	M	M	Bqennaya	L	ML	M	Broummana El-Matn	VL	ML	M
Bsalim	VL	ML	M	Bsifrine	VL	L	M	Bteghrine	VL	L	M
Chaouiye	VL	ML	M	Chouaya El-Matn	L	M	M	Choueir	VL	ML	M
Chrine	VL	L	M	Dahr El Sawan El-Mat	VL	L	M	Daychouniyeh	L	M	M
Dbayeh	L	M	M	Deir Chamra	VL	L	M	Deir Mar Abda el Mch	VL	L	M
Deir Mar Roukouz	L	M	M	Deir Tamiche	VL	ML	M	Dik El-Mehdi	L	ML	M
Dikwaneh	L	M	M	Douar El-Matn	VL	ML	M	Fanar	L	M	M
Fraike	VL	L	M	Haret El-Ballaneh	L	M	M	Hbous	L	M	M
Himlaya	VL	ML	M	Jal El Did	L	M	M	Jdeideh El-Metn	L	M	M
Jouar El-Matn	VL	L	M	Jouret El-Ballout	VL	ML	M	Kaaqour	VL	L	M
Kfar Aaqab	VL	L	M	Kfertay El-Matn	VL	ML	M	Khenchara	VL	L	M
Khillet El-Mtain	VL	L	M	Konnabat Broummana	VL	ML	M	Konnabat Salima	VL	L	M
Machraah El-Matn	VL	ML	M	Majdel Tarchich	L	M	M	Majzoub	L	M	M
Mansouriyeh El-Metn	L	M	M	Mar Boutros Karm Et-	VL	L	M	Mar Chaya et Mzekke	VL	ML	M
Mar Moussa Ed-Douar	VL	L	M	Marjaba	VL	ML	M	Masqa	VL	L	M
Mayasse	VL	ML	M	Mazraat Deir Aoukar	L	M	M	Mazraat El-Hadirat	L	ML	M
Mazraat Yachouh	L	M	M	Mchikha	VL	ML	M	Menqlet Mezher	L	M	M
Mhaydseh Matn	VL	ML	M	Mkalles	L	M	M	Mrouj	VL	M	M
Mtain	L	M	M	Mtayleb	L	M	M	Nabay	VL	ML	M
Naccache	L	M	M	Ouadi Chahine	VL	L	M	Ouadi El-Karm El-Mat	VL	L	M
Ouata El-Mrouj	VL	ML	M	Ouyoun El-Matn	VL	L	M	Qornet Chehwan	VL	ML	M
Qornet El-Hamra	VL	ML	M	Roumieh	VL	ML	M	Sfeilet Bikfaya	VL	L	M
Sinn El-Fil	L	M	M	Zabbougha	VL	L	M	Zalqa	L	M	M

Zarououn	VL	L	M	Zekrite	VL	ML	M	Zighrine El-Matn	L	ML	M
Zouk El-Khrab	L	M	M								

## Chouf

Municipality	15-Jan	16-Jan	17-Jan	Municipality	15-Jan	16-Jan	17-Jan	Municipality	15-Jan	16-Jan	17-Jan
Aalmane El-Chouf	L	M	M	Aammq El-Chouf	VL	ML	M	Ain Ouzein	VL	L	M
Ain Qani	VL	ML	M	Ain Zhalta	VL	L	M	Ainbal	VL	ML	M
Amatour	VL	L	M	Anout	L	ML	M	Atrine	L	ML	M
Baadarane	VL	ML	M	Baaqline	L	ML	M	Baasir	L	M	M
Barja	L	M	M	Barouk	VL	L	ML	Bater	VL	ML	M
Batloun	VL	ML	M	Bayqoun	L	M	M	Bchetfine	VL	ML	M
Beiteddine	VL	L	M	Benouati Ech-Chouf	L	ML	M	Berjein	L	ML	M
Bireh et Mtalleh	VL	ML	M	Biret El-Chouf	VL	M	M	Bkechtine Ouel Mchei	VL	L	M
Bkifa El-Chouf	L	ML	M	Botme	VL	L	M	Bqaiaa Ech-Chouf	L	L	M
Bsaba El-Chouf	L	ML	M	Chammis El-Chouf	L	M	M	Chehim	L	ML	M
Chemaarine	VL	L	M	Chourit	VL	ML	M	Daher El-Chouf	L	L	M
Dalhoun	L	ML	M	Damour	L	M	M	Daraya El-Chouf	VL	ML	M
Deir El-Moukhalles	L	L	M	Deir Baba	L	ML	M	Deir Dourit	L	ML	M
Deir El-Qamar	L	ML	M	Deir Kouche	VL	ML	M	Dibbieh	L	L	M
Dmit	L	ML	M	Fouara Jaafar	VL	ML	M	Fraidis El-Chouf	VL	ML	M
Ghabet Jaafar	VL	ML	M	Gharife	VL	ML	M	Haret Jandal	VL	ML	M
Hasrout	VL	M	M	Jadra	ML	M	M	Jahlieh	L	ML	M
Jbeih El-Chouf	VL	ML	M	Jdeidet El-Chouf	VL	ML	M	Jiyeh	ML	M	M
Jleilyeh	VL	ML	M	Jmailiyeh	L	M	M	Joun	L	ML	M
Kahlounie El-Chouf	VL	M	M	Ketermaya	L	M	M	Kfar Faqoud	L	ML	M
Kfar Hamal	L	M	M	Kfar Him	VL	M	M	Kfar Katra	VL	ML	M
Kfar Niss	VL	ML	M	Kfar hay	VL	ML	M	Kfarnabrakh	VL	ML	M
Khirbet Bisri	VL	L	M	Knayse El-Chouf	VL	L	M	Maaniyeh	L	M	M
Maasser Beiteddine	VL	ML	M	Maasser El-Chouf	VL	L	M	Majdalouna	L	M	M
Majdel El-Meouch	VL	ML	M	Mazboud	L	M	M	Mazmoura	L	ML	M
Mazraat El Chouf	VL	ML	M	Mazraat El Daher	VL	L	M	Mazraat El-Douair	VL	L	M
Mechref	L	ML	M	Mghairie	L	M	M	Mghayrie El-Chouf	L	ML	M
Moukhtara	VL	ML	M	Mrusti	VL	ML	M	Mtolle	VL	M	M
Naameh	L	M	M	Niha El-Chouf	VL	ML	M	Ouadi Abou Youssef	VL	L	M
Ouadi Ed-Deir	VL	M	M	Ouadi El-Sit	VL	ML	M	Ouadi bnehlay	VL	ML	M
Qraibeh	VL	ML	M	Qreiaa	VL	L	M	Rmayle El-Chouf	L	M	M
Semqaniyeh	VL	M	M	Sibline	L	M	M	Sirjbeil	L	ML	M
Warhanieh	VL	ML	M	Werdaniyeh	L	M	M	Zaarourieh	L	M	M

## Baabda

Municipality	15-Jan	16-Jan	17-Jan	Municipality	15-Jan	16-Jan	17-Jan	Municipality	15-Jan	16-Jan	17-Jan
Abadiyeh	VL	ML	M	Ain Mouaffaq	VL	ML	M	Araiya	VL	L	M
Arbaniyeh	VL	L	M	Arsoun	VL	L	M	Baabda	L	M	M
Baalchmey	L	M	M	Bmaryam	VL	ML	M	Bourj El-Brajneh	L	M	M
Boutchay	L	ML	M	Bsaba Baabda	L	M	M	Btekhney	VL	L	M
Btibyat	VL	L	M	Bzbeddine	VL	L	M	Chbeniyeh	VL	ML	M
Chiyah	L	M	M	Chmeisset Baabda	VL	L	M	Chouit	VL	L	M
Deir El-harf	VL	ML	M	Deir Khouna	VL	ML	M	Dlaybeh	VL	L	M

Falougha	VL	M	M	Furn El-Chebbak	L	M	M	Hadath Beyrouth	L	M	M
Halaliyeh Baabda	VL	L	M	Hammana	VL	M	M	Haret El Sett	VL	ML	M
Haret Hamze	VL	ML	M	Haret Hreik	L	M	M	Hasbaiya El-Metn	VL	L	M
Jouar El-Hoz	VL	L	M	Jouret Arsoun	VL	L	M	Kfar Chima	L	M	M
Kfar Selouane	VL	ML	M	Khalouat Baabda	VL	M	M	Kneisset Baabda	VL	L	M
Laylakeh	L	M	M	Louayzeh Baabda	L	ML	M	Merdache	L	M	M
Mzairaa Baabda	VL	L	M	Ouadi Chahrour El Ol	L	ML	M	Ouadi Chahrour El So	VL	L	M
Qalaa Baabda	VL	ML	M	Qhraybe Baabda	VL	ML	M	Qobbayaa	VL	ML	M
Qornayel	VL	L	M	Qortada	VL	L	M	Qrayeh Baabda	VL	ML	M
Qsaibeh Baabda	VL	L	M	Qtale Baabda	VL	L	M	Ras El Metn	VL	ML	M
Ras El-Haref	VL	ML	M	Rouayset El-Ballout	VL	L	M	Salima Baabda	VL	L	M
Tahouitat El Ghadir	L	M	M	Tarchich	L	M	M	Zandouqa	VL	L	M

## Aley

Municipality	15-Jan	16-Jan	17-Jan	Municipality	15-Jan	16-Jan	17-Jan	Municipality	15-Jan	16-Jan	17-Jan
Abey	L	ML	M	Aghmid	VL	L	M	Ain Dara	VL	M	M
Ain Drafil	VL	L	M	Ain El Halazoun	VL	M	M	Ain El-Rmmaneh	VL	L	M
Ain Jedideh	L	M	M	Ain Ksour	VL	ML	M	Ain Onoub	VL	ML	M
Ain Traz	VL	ML	M	Ainab	VL	ML	M	Aley	L	M	M
Aramoun	L	ML	M	Aytat	L	M	M	Azouniyeh	VL	M	M
Baawerta	L	ML	M	Badghan Oua Wadi Bad	VL	ML	M	Bassatine	L	ML	M
Bayssour	L	ML	M	Bchamoun	L	ML	M	Bdadoun	VL	ML	M
Behouara	L	ML	M	Bennay	L	ML	M	Bhamdoun El-Dayaa	L	M	M
Bhamdoun El-Mhatta	L	M	M	Bkhechthey	L	M	M	Bleibel	VL	L	M
Bmakine	L	M	M	Bmehray	VL	L	ML	Bouzrid	VL	L	M
Bserrine	VL	M	M	Bsous	VL	L	M	Btalloun	L	M	M
Btater	VL	M	M	Chanay	L	M	M	Charoun	VL	M	M
Chartoun	VL	ML	M	Chemlane	VL	ML	M	Chouefat El-Aamrous	L	M	M
Chouefat El-Oumara	L	M	M	Chouefat El-Quoubbe	L	M	M	Dakkoun	L	ML	M
Deir Qoubel	L	ML	M	Dfoun	L	M	M	Douair El Remmaneh	VL	L	M
Ghaboun	VL	ML	M	Habramoun	VL	L	M	Homs Oua Hama	VL	M	M
Houmal	VL	ML	M	Jisr El Qadi	L	ML	M	Kehaleh	VL	L	M
Keyfoun	L	M	M	Kfar Aamey	VL	ML	M	Kommatyeh	L	ML	M
Maasrati	VL	ML	M	Majdel Baana	VL	M	M	Mansourieh et Ain El	L	M	M
Mazraat El-Nahr	VL	ML	M	Mchakhte	VL	L	M	Mecherfeh	VL	ML	M
Mejdaya	VL	ML	M	Mrayjat	VL	ML	M	Ramliyah	VL	ML	M
Rechmaya	VL	M	M	Rejmeh	L	ML	M	Remhala	L	ML	M
Rouaysset El Neemane	VL	ML	M	Saoufar	VL	M	M	Selfaya	VL	ML	M
Sirhmoul	VL	ML	M	Souq El Ghareb	L	ML	M	Taazanieh	L	M	M

## Kesrouane

Municipality	15-Jan	16-Jan	17-Jan	Municipality	15-Jan	16-Jan	17-Jan	Municipality	15-Jan	16-Jan	17-Jan
Achkout	L	ML	M	Adma Oua Dafneh	L	M	M	Ain Ed-Delbe Kesroua	VL	L	M
Ain El-Rihane	L	ML	M	Aintoura Kesrouane	L	M	M	Ajaltoun	VL	L	M
Akaybeh Kesrouane	L	M	M	Aramoun Kesrouane	L	M	M	Azra ouel Ozor	VL	L	M
Ballouneh	VL	L	M	Batha	VL	L	M	Bekaatat Achkout	VL	ML	M
Bekaatat Kanaan	VL	L	M	Bizhel	VL	L	M	Bouar	L	M	M
Bqaatouta	VL	ML	M	Bqaq Ed-Dine	L	M	M	Bzommar	L	ML	M

Chahtoul	VL	ML	M	Chnaniir	L	M	M	Chouan	VL	L	M
Daraya Kesrouane	VL	L	M	Darououn	VL	ML	M	Deir Baqlouch	VL	ML	M
Dlebta	L	M	M	Eghbeh	VL	L	M	Faraya	L	M	M
Fatka	L	M	M	Feytroun	VL	L	M	Ghazir	L	M	M
Ghbaleh Kesrouane	L	ML	M	Ghedrass	L	ML	M	Ghosta	VL	ML	M
Ghyneh	L	M	M	Harharaya w Kattine	L	M	M	Harissa Kesrouane	L	ML	M
Hayata	VL	ML	M	Hosein	L	ML	M	Hrajel	L	M	M
Jdeideh Ghazir	L	M	M	Jeita	VL	ML	M	Jounieh Ghadir	L	M	M
Jounieh Haret Sakhr	L	M	M	Jounieh Salel Alma	L	M	M	Jounieh Sarba	L	M	M
Jouret Bedrane	L	ML	M	Jouret Mhad	VL	L	M	Jouret Termos	L	M	M
Kfar Debiane	VL	M	M	Kfar Tay Kesrouane	VL	L	M	Kfar Yassine	L	M	M
Kfour Kesrouane	L	M	M	Kharayeb Nahr Ibrahi	L	ML	M	Klayaat Kesrouane	VL	L	M
Maarab	L	M	M	Maaysra Kesrouane	L	ML	M	Mayrouba	VL	M	M
Mazraat Er-Ras	L	ML	M	Mazraat Mrah El-Mir	VL	L	M	Mchaa El Ftouh	L	M	M
Mchaa Faraya	L	M	M	Mchaa Kfar Dibiane	L	M	M	Mghaer	VL	L	M
Mradiyah	VL	L	M	Nahr Ed-Dahab	VL	L	M	Nammoura Kesrouane	L	ML	M
Ouata El Jaouz	VL	ML	M	Ouata Sillam	L	M	M	Raachine	VL	L	M
Rayfoun	VL	ML	M	Safra Kesrouane	L	M	M	Shayle Kesrouane	L	ML	M
Tabarja	L	M	M	Yahchouch	VL	L	M	Zaaytreh	L	L	M
Zeytoun	L	ML	M	Zouk Mikael	L	M	M	Zouk Mosbeh	L	M	M

## Baalbek\_Hermel

### Baalbek

Municipality	15-Jan	16-Jan	17-Jan	Municipality	15-Jan	16-Jan	17-Jan	Municipality	15-Jan	16-Jan	17-Jan
Aadous	VL	ML	M	Aamchki	L	M	M	Aarsal	L	M	MH
Ain Baalbek	VL	M	M	Ain Bourday	VL	M	M	Ain El-Benye	VL	M	M
Ain El-Jaouz Baalbek	L	M	M	Ain El-Siya Chadoura	L	M	M	Al Khodr Baalbek	VL	ML	M
Al Nabi Chit	VL	ML	M	Aynata Baalbek	L	M	M	Baalbek	VL	M	M
Bachwat	VL	L	M	Barqa	VL	L	M	Bednayel Baalbak	L	M	M
Beit Chama	VL	M	M	Bijjaje	VL	M	M	Bouday	VL	ML	M
Brital	VL	M	M	Btadi	VL	ML	M	Chaat	VL	M	M
Chaibe	L	M	M	Chlifa	VL	ML	M	Chmestar	L	M	M
Dar El-Oussa	VL	L	M	Deir El-Ahmar	VL	ML	M	Deir Mar Maroun Baal	VL	M	M
Douris	VL	ML	M	Fakiha	VL	M	M	Hadath Baalbek	VL	M	M
Ham	VL	M	M	Haour Taala	VL	M	M	Hizzine	VL	M	M
Hlebta	VL	L	M	Hosh Barada	VL	ML	M	Hosh El Dahab	VL	ML	M
Hosh El Snid	VL	ML	M	Hosh El-Nabi	VL	ML	M	Hosh El-Rafiq	VL	ML	M
Hosh Tal Safiya	VL	ML	M	Hrebta	VL	ML	M	laat	VL	ML	M
Jebaa	L	M	M	Jenta	VL	ML	M	Kfar Dabach	VL	ML	M
Kfar Dane	VL	M	M	Khraibeh El-Hermel	VL	ML	M	Khreibet Baalbek	VL	M	M
Kneisset Baalbek	VL	M	M	Labueh	VL	M	M	Maarboun	VL	M	M
Majdaloun	VL	ML	M	Maqneh	VL	M	M	Mazraat Beit Mcheik	L	M	M
Misraya	VL	ML	M	Moqraq	VL	M	M	Nabha El-Damdoum	L	M	M
Nabi Chbay	VL	M	M	Nabi Osman	VL	M	M	Nahleh baalbek	L	M	M
Ouadi El-Oss	VL	L	M	Qaa Baayoun	VL	M	M	Qaa Jouar Maqiye	VL	ML	ML
Qaa Ouadi El-Khanzir	VL	ML	L	Qah Baalbek	VL	M	ML	Qarha Baalbek	VL	M	M



Qsarnaba	VL	M	M	Ram Baalbek	VL	L	M	Ras Baalbek El Sahl	VL	M	M
Ras Baalbek El-Charq	VL	M	M	Riha	VL	ML	M	Saaide	VL	M	M
Sbouba	VL	ML	M	Seriine El-Tahta	VL	ML	M	Slouqi	L	M	M
Taiba Baalbek	VL	ML	M	Talia	VL	ML	M	Taraiya	L	M	M
Temnin El Fawqa	VL	M	M	Temnin El-Tahta	VL	ML	M	Tfail	L	M	M
Yahfoufa	VL	M	M	Yammouneh	L	ML	M	Younine	L	M	M
Zboud	VL	M	M								

## Hermel

Municipality	15-Jan	16-Jan	17-Jan	Municipality	15-Jan	16-Jan	17-Jan	Municipality	15-Jan	16-Jan	17-Jan
Charbine El-Hermel	VL	L	M	Hermel Jbab	L	M	M	Hermel	VL	ML	ML
Maaysra El-Hermel	VL	L	M	Michaa Mrajhine	L	ML	M	Ouadi Faara	VL	ML	M
Ras Baalbek - Ouadi	VL	M	M	Ras Baalbek El Gharb	L	M	M	Zighrine	VL	L	M

## Akkar

### Akkar

Municipality	15-Jan	16-Jan	17-Jan	Municipality	15-Jan	16-Jan	17-Jan	Municipality	15-Jan	16-Jan	17-Jan
Aain Tinta	M	M	MH	Aaiyat	L	M	MH	Aakkar El-Aatiqa	L	ML	M
Aamar Akkar	ML	M	M	Aamar El Baykat	M	M	MH	Aamayer	L	M	M
Aamriyet Akkar	M	M	MH	Aandqet	L	M	M	Aarmeh	M	M	MH
Aarqa	L	M	M	Aawaynat	ML	M	MH	Aayoun Akkar	L	M	MH
Abboudiye	M	M	MH	Ain El-Zeit	M	M	MH	Ain Yaaqoub	L	M	M
Akroum	L	ML	M	Aridet Cheikh Zennad	M	M	H	Baldeh w Mazraat Bal	L	M	MH
Barcha	M	M	MH	Bardeh	M	M	MH	Bebnine	L	M	M
Beino	L	M	MH	Beit Ayoub	L	M	M	Beit El-Haouch	L	M	M
Beit Mellat	L	M	MH	Beit Younes	L	ML	M	Berbara Akkar	L	M	MH
Berqayel	L	M	M	Bezbina	VL	L	M	Bireh Akkar	M	M	MH
Borj	L	M	MH	Bqerezla	L	M	M	Bzal	L	ML	M
Chane	L	ML	M	Chaqdouf	L	M	MH	Charbila	M	M	MH
Cheikh Mohammad	ML	M	M	Cheikh Taba Es-Sahl	ML	M	M	Cheikh Taba	L	M	M
Cheikh Zennad	M	M	MH	Cheikhlar	ML	M	MH	Chir Hmairine	M	M	MH
Daghle	L	M	MH	Dahr Laissine	L	M	MH	Darine	M	M	MH
Dawra	L	ML	M	Dawsa w Baghdadi	M	M	MH	Dayret Nahr El-Kabir	ML	M	M
Deir Dalloum	L	M	M	Deir Jennine	L	M	MH	Denbou	L	ML	M
Dibbabiyyeh	M	M	MH	Douair Aadwiyeh	L	M	MH	Fassikine	L	M	MH
Fnaydek	VL	ML	M	Fraydes Akkar	M	M	MH	Ghazayle	M	M	MH
Habchit	L	L	M	Hakour	L	M	M	Halba	ML	M	M
Haouchab	M	M	MH	Hayssat	M	M	MH	Haytla	M	M	MH
Hayzouq	L	M	MH	Hedd	L	M	MH	Hmaira Akkar	L	M	M
Hmaiss Akkar	L	M	MH	Hnaider	L	L	M	Hokr Ed-Dahri	M	M	MH
Hokr Etti	L	M	M	Hokr Jouret Srar	M	M	MH	Houaich	L	ML	M
Hrar	L	M	M	Idbil	L	M	M	Ilat	L	M	M
Janine	M	M	MH	Jdeidet El-Joumeh	L	M	M	Jdeidet El-Kaiteh	L	M	M
Jebrayel	L	M	MH	Kafr	VL	ML	M	Kafr	M	M	MH
Karm Asfour	L	M	M	Kfar Melki Akkar	ML	M	M	Kfar Noun	M	M	MH
Kfarharra	L	M	MH	Khalsa	ML	M	MH	Kharnoubet Akkar	M	M	MH

Khirbet Daoud Aakkar	M	M	MH	Khirbet El Remmane	ML	M	M	Khirbet Shar	L	M	MH
Khoreybet El-Jindi	ML	M	M	Khreibet Aakkar	L	M	M	Kneisset Aakkar	M	M	MH
Kneisset Hnaider	VL	L	M	Knisse	L	M	MH	Kroum El-Aarab	L	M	M
Kwachra	M	M	MH	Kweykhat	M	M	M	Machta Hammoud	ML	M	M
Majdala	L	M	M	Majdel Akkar	L	M	MH	Mar Touma	L	M	M
Marlaya Melhem	ML	M	M	Mashha	L	M	M	Massoudiye	M	M	MH
Mazraat Beit Ghattas	L	M	M	Mazraat En-Nahriye	ML	M	MH	Mechmech	VL	ML	M
Memneh	VL	L	M	Mhammara	L	M	M	Mighraq Aakkar	M	M	MH
Minyara	L	M	M	Moqayteh	ML	M	M	Mounjez	M	M	MH
Msalla	M	M	MH	Mzeihmeh	M	M	MH	Nfaiseh	L	M	M
Noura Et-Tahta	M	M	MH	Ouadi El-Haour	M	M	MH	Ouadi El-Jamous	L	M	M
Ouyoun El-Ghizlane	L	M	M	Qaabarine	ML	M	M	Qabaait	VL	ML	M
Qachlaq	M	M	MH	Qantara Aakkar	L	M	M	Qarha Aakkar	VL	L	M
Qarqaf	L	M	M	Qboula	L	M	MH	Qleiaat Aakkar	M	M	MH
Qloud El-Baqie	L	M	MH	Qobaiyat Aakkar	L	ML	M	Qobbat Chamrat	ML	M	M
Qorayat	L	ML	M	Qornet Aakkar	L	M	M	Qsair Aakkar	M	M	MH
Rahbe	L	M	M	Rihaniyet Aakkar	M	M	MH	Rmah	M	M	MH
Rmoul	ML	M	M	Saadine	M	M	MH	Sadaqa	L	M	M
Saidnaya	M	M	MH	Sammouniye	ML	M	M	Sayssouq	L	M	M
Semmaqiye	M	M	MH	Semmaqli	ML	M	M	Sfinet El-Dreib	ML	M	MH
Sfinet El-Qaitaa	L	ML	M	Sindyanet Zeidane	L	M	M	Souaisset Aakkar	L	M	MH
Srar	M	M	MH	Tal Abbas El Gharby	M	M	M	Tal Abbas El-Chargy	M	M	MH
Tal Biret	M	M	MH	Tal Hmayra	M	M	MH	Tal Maayan Tal Kiri	M	M	MH
Tal Sibel	ML	M	M	Tallet Chattaha	L	M	MH	Tikrit	L	M	M
Tleil	M	M	MH	Tshea	VL	ML	M	Zawarib	L	M	M
Zouq El Hosniyeh	L	M	M	Zouq El-Haddara	L	M	M	Zouq El-Hbalsa	L	M	M
Zouq El-Mogachrine	L	M	M								

## Sud

### Sour

Municipality	15-Jan	16-Jan	17-Jan	Municipality	15-Jan	16-Jan	17-Jan	Municipality	15-Jan	16-Jan	17-Jan
Aaiyeh	L	M	H	Aalma El-Chaab	L	L	M	Aaytit	L	M	MH
Abbassiyeh Sour	L	M	M	Abou Chech	L	ML	M	Ain Abou Abdallah	L	M	M
Ain Baal	L	M	M	Arzoun	L	M	M	Aziyeh	L	L	M
Baflaya	L	M	MH	Barich	L	M	M	Batouliyeh	L	M	M
Bayad	L	M	MH	Bazouriyeh	L	M	M	Bediass	L	M	M
Bestiyat	L	M	M	Borj El Chemali	L	M	M	Borj En-Naqoura	L	ML	M
Borj Rahhal	L	M	M	Boustane	L	M	M	Btaychiyeh	L	ML	M
Chaaitiye	L	M	M	Chameh	L	L	M	Chehabiye	L	M	MH
Chhour	L	ML	M	Chihine	L	ML	M	Debaal Sour	L	M	MH
Deir Amess	L	M	MH	Deir Kifa	L	M	M	Deir Qanoun El-Ain	L	M	M
Deir Qanoun El-Naher	L	M	M	Derdghaiya	L	M	M	Dhayra	L	ML	M
Halloussiyeh	L	M	M	Hamoul	L	L	M	Hanaouey	L	M	M
Henniye	L	M	M	Hmairi Sour	L	M	M	Iskandarouna Sour	L	ML	M
Jbal El Botom	L	M	MH	Jebbin	L	M	M	Jennata	L	M	M
Jijim	L	L	M	Jouaiya	L	M	MH	Kneisset Sour	L	M	MH

Maarake	L	M	M	Maaroub	L	M	M	Majadel	L	M	MH
Majdalzoun	L	ML	M	Mansouri Sour	L	M	M	Marnba	L	ML	M
Marouahine	L	ML	M	Mazraat El-Zalloutiy	L	M	M	Mazraat Mechref	L	M	MH
Mazraat Tayr Semhat	L	L	M	Mheilib	L	M	M	Neffakhiyeh	L	M	M
Niha Sour	L	M	M	Ouadi Jilo	L	M	MH	Qana	L	M	MH
Qolaileh Sour	L	M	M	Rechknay	L	M	MH	Rmadiyeh	L	M	MH
Selha Sour	L	M	M	Siddiqine	L	M	MH	Sour	ML	M	M
Srifa	L	M	M	Tayr Debbe	L	M	M	Tayr Felsay	L	M	M
Tayr Harfa	L	M	M	Touayri	L	ML	M	Toura	L	M	M
Yanouh Sour	L	M	MH	Yarine	L	M	M	Zebqine	L	L	M

## Saida

Municipality	15-Jan	16-Jan	17-Jan	Municipality	15-Jan	16-Jan	17-Jan	Municipality	15-Jan	16-Jan	17-Jan
Aanqoun	L	M	M	Aaqtanit	L	M	M	Aarab Ej-Jall	L	M	M
Aarab Tabbaya	L	M	M	Abra Saida	L	M	M	Adloun	L	M	M
Adousiyeh	L	M	M	Ain-El-Deleb	L	M	M	Arzai	L	M	M
Babliyah	L	M	M	Barty	L	M	M	Bissariyeh	L	M	M
Bnaafoul	L	M	M	Bqosta	L	M	M	Bramiy	L	M	M
Daoudiyeh	L	M	M	Dareb El-Sim	L	M	M	Erkay	L	M	M
Ghassanieh	L	M	M	Ghazieh	L	M	M	Hajjeh	L	M	M
Haret Saida	L	M	M	Hartiyeh	L	M	M	Hlaliye Saida	L	M	M
Insariyat	L	M	M	Jazira Saida	L	M	M	Kafar Bit	L	M	M
Kaoutariyet El-Siyad	L	M	M	Kfar Chellal	L	M	M	Kfar Hatta Saida	L	M	M
Kfar Milke Saida	L	M	M	Khartoum	L	M	M	Khaziz	L	M	M
Khirbet Ed-Douair Sa	L	M	M	Khirbet El-Bassal	L	M	M	Khrayeb Saida	L	M	M
Loubieh	L	M	M	Maghdouche	L	M	M	Majdelyoun	L	M	M
Matariyet El-Choumar	L	M	M	Matayriyeh	L	M	M	Mazraat 'Mseileh	L	M	M
Mazraat 'Snaiber	L	M	M	Mazraat Aarab Soukka	L	M	M	Mazraat Deir Taqla	L	M	M
Mazraat El Yahoudiye	L	M	M	Mazraat El-Housseini	L	M	M	Mazraat El-Mhaydaleh	L	M	M
Mazraat El-Ouasta	L	M	M	Mazraat Jamjim	L	M	M	Mazraat Kaoutariyet	L	M	M
Mazraat Kfar Badda	L	M	M	Mazraat Oussamiyat	ML	M	M	Mazraat Sari	L	M	M
Mazraat Sinai	L	M	M	Meemariyeh	L	M	M	Merouaniyeh	L	M	M
Miyeh ou Miyeh	L	M	M	Najjariyeh	L	M	M	Qaaqiyat El-Snaouba	L	M	M
Qnarit	L	M	M	Qraiye Saida	L	M	M	Saida Ed-Dekermane	L	M	M
Saida El-Oustani	L	M	M	Saida El-Qadimeh	ML	M	M	Saida Kefraya	L	M	M
Saksakiyeh	L	M	M	Salhie Saida	L	M	M	Sarafand	L	M	M
Sfenta	L	ML	M	Tafahta	L	M	M	Tanbourit	L	M	M
Tebna	L	M	M	Zaghdraiya	L	M	M	Zeita	L	M	M
Zrariyeh	L	M	M								

## Jezzine

Municipality	15-Jan	16-Jan	17-Jan	Municipality	15-Jan	16-Jan	17-Jan	Municipality	15-Jan	16-Jan	17-Jan
Ain El-Mir (El Estab	L	M	M	Anane	L	L	M	Aramta	L	M	M
Ariya	VL	L	M	Aychiyeh	L	ML	M	Azour	VL	L	M
Baba	VL	L	M	Bayssour Jezzine	L	M	M	Benoueteh Jezzine	VL	ML	M
Bhannine	VL	ML	M	Bisri	VL	L	M	Bkassine	VL	L	M
Bouslaya	VL	L	M	Btedine El-Leqech	VL	L	M	Chbail	VL	L	M
Choualiq Jezzine	L	M	M	Dahr Ed-Deir	L	ML	M	Deir El Qattine	VL	L	M

Demachqiyeh	L	M	M	Ghabbatiyeh	VL	L	M	Harf Jezzine	VL	L	M
Hassaniyeh	L	M	M	Haytouleh	L	M	M	Haytura	VL	L	M
Hidab	VL	ML	M	Homsiyeh	VL	L	M	Jabal Toura	L	ML	M
Jarmaq	L	M	M	Jensnaya	L	M	M	Jernaya	L	M	M
Jezzine	VL	ML	M	Karkha	L	ML	M	Kfar Falous	L	M	M
Kfar Houna	VL	ML	M	Kfar Jarrah	L	M	M	Lebaa	L	M	M
Louayzet Jezzine	L	ML	M	Machmouche	VL	L	M	Mahmoudiyeh Jezzine	L	M	M
Maknounye Jezzine	VL	L	M	Maraat Ouzaïyeh	L	ML	M	Mazraat Daraya	VL	L	M
Mazraat El-Aarqoub	L	L	M	Mazraat El-Mathane	VL	L	M	Mazraat El-Rahbane	VL	L	M
Mazraat Khallet Khaz	L	ML	M	Mazraat Louzid (Loua	VL	L	M	Mazraat Qrouh	L	M	M
Mazraat Tamra	ML	M	M	Mazraat Zighrine Jez	L	ML	M	Mazraat	L	L	M
Mharbiyeh	L	M	M	Midane Jezzine	VL	ML	M	Mjeydel Jezzine	L	M	M
Mlikh	L	ML	M	Mrah El-Hbasse	L	M	M	Ouadi Baanqoudaine	L	M	M
Ouadi El-Laymoun	L	M	M	Ouardiyeh	VL	VL	M	Qabaa Jezzine	VL	L	M
Qatrani	L	ML	M	Qaytouleh	VL	L	M	Qtaleh Jezzine	VL	L	M
Rihane Jezzine	L	M	M	Rimat	L	ML	M	Roum	VL	L	M
Roummanet	L	M	M	Sabbah	VL	L	M	Saydoun	L	ML	M
Sfaray	L	L	M	Snaya	VL	L	M	Sojoud	L	ML	M
Srayri	L	ML	M	Taaid	VL	L	M	Wadi Jezzine	VL	ML	M
Zhalta	VL	L	M								

## Bekaa

### West Bekaa

Municipality	15-Jan	16-Jan	17-Jan	Municipality	15-Jan	16-Jan	17-Jan	Municipality	15-Jan	16-Jan	17-Jan
Aammiq BG	VL	ML	M	Ain El Tineh BG	VL	ML	M	Ain Zebdeh	VL	ML	M
Ana	VL	L	M	Aytanit	VL	L	M	Baaloul BG	VL	ML	M
Bab Mareh	VL	ML	M	Chouberqiye Aammiq	VL	ML	M	Dakoue	VL	ML	M
Deir Ain El-Jaouze	VL	ML	M	Deir Tahniche	VL	ML	M	Ghaza	VL	ML	M
Harime El-Soughra	VL	ML	M	Hoch Harimeh	VL	ML	M	Jazira BG	VL	ML	M
Jib Jennine	VL	ML	M	Kamed-El-Laouz	VL	ML	M	Kefraya BG	VL	L	M
Khiara El Atika	VL	ML	M	Khiara	VL	ML	M	Khirbet Qanafar	VL	ML	M
Lala	VL	ML	M	Lebbaya BG	VL	ML	M	Loussa	L	ML	M
Machghara	VL	ML	M	Manara (Hammara) BG	VL	L	M	Mansoura BG	VL	ML	M
Marej BG	VL	ML	M	Maydoun	L	ML	M	Ouaqf BG	VL	ML	M
Qaraaoun	VL	ML	M	Qelya	VL	M	M	Raouda (Istabel)	VL	ML	M
Saghbine	VL	ML	M	Sohmor	VL	ML	M	Soltan Yacoub el Ara	VL	ML	M
Souairy	VL	ML	M	Sultan Yaacoub	VL	ML	M	Tal Znoun	VL	ML	M
Yehmor BG	VL	ML	M	Zilaya	VL	ML	M				

### Zahle

Municipality	15-Jan	16-Jan	17-Jan	Municipality	15-Jan	16-Jan	17-Jan	Municipality	15-Jan	16-Jan	17-Jan
Aanjar (Haouch Mouss	VL	ML	M	Ablah	VL	ML	M	Ain Kfarzabad	VL	L	M
Ali-El-Nahri	VL	ML	M	Bar Elias	VL	ML	M	Bouarej	VL	M	M
Cheberqiyet Tabet	VL	M	M	Chtaura	VL	M	M	Deir El Ghazal	VL	ML	M
Delhamiyet Zahle	VL	ML	M	Ferzol	VL	M	M	Haouch El-Ghanam	VL	ML	M
Haouch Es-Siyadeh	VL	ML	M	Haouch Hala	VL	ML	M	Haouch Mandara	VL	M	M

Haouch Qayssar	VL	ML	M	Hezerta	L	M	M	Hosh Moussa	VL	ML	M
Jdita	VL	M	M	Kfarzabad	VL	ML	M	Ksara	VL	ML	M
Majdel Aanjar	VL	L	M	Makssi	VL	M	M	Massa	VL	ML	M
Mazraat Er-Remtaniye	L	M	M	Mrayjat Zahle	VL	M	M	Mzaraa Zahle	VL	ML	M
Nabi Ayla	VL	ML	M	Nasriyet Rizk	VL	ML	M	Nasriyet Zahle	VL	ML	M
Niha Zahle	L	M	M	Ouadi Ed-Deloum	VL	M	M	Ouadi El-Arayech	VL	M	M
Qaa El Rim	L	M	M	Qab Elias	VL	M	M	Qousaya	VL	ML	M
Rhit	VL	ML	M	Riyak	VL	ML	M	Saadnayel	VL	ML	M
Taal El-Akhdar	VL	ML	M	Taalbeya	VL	M	M	Taanayel	VL	M	M
Talamara	VL	ML	M	Tcheflik Edde Haouch	VL	ML	M	Tcheflik Qiqano	VL	ML	M
Terbol Zahle	VL	ML	M	Touaite Zahle	L	M	M	Zahle Aradi	VL	M	M
Zahle El-Berbara	VL	M	M	Zahle El-Maallaqa	VL	M	M	Zahle El-Midane	VL	M	M
Zahle Er-Rassiye	VL	M	M	Zahle Haouch El-Ouma	VL	ML	M	Zahle Haouch El-Ouma	VL	ML	M
Zahle Haouch Ez-Zara	VL	M	M	Zahle Maalaaqa Aradi	VL	ML	M	Zahle Mar Antonios	VL	M	M
Zahle Mar Elias	VL	M	M	Zahle Mar Gerios	VL	M	M	Zahle Saydet En-Naja	VL	M	M
Zebdoul	VL	M	M								

## Rachaiya

Municipality	15-Jan	16-Jan	17-Jan	Municipality	15-Jan	16-Jan	17-Jan	Municipality	15-Jan	16-Jan	17-Jan
Ain Arab Rachaiya	VL	ML	M	Ain Ata	VL	M	M	Ain Harche	VL	M	M
Aqabe Rachaya	VL	M	M	Ayha	VL	M	M	Ayta El Fokhar	VL	ML	M
Bakifa Rachaya	VL	M	M	Bakka	L	ML	M	Beit Lahya	VL	M	M
Bireh Rachaiya	VL	ML	M	Daheer El Ahmar	VL	M	M	Deir El-Achayer	L	L	L
Heloua Rachaiya	L	L	L	Hoch El Qannabeh Rac	VL	ML	M	Kaoukaba Bou Arab	VL	ML	M
Kfar Danis	VL	M	M	Kfar Mechki	VL	ML	M	Kfar Qouq	VL	ML	M
Kherbet Rouha	VL	ML	M	Majdel Balhiss	VL	ML	M	Mdoukha	VL	ML	M
Mhaydseh Rachaiya	VL	ML	M	Nabi Safa	VL	ML	M	Rachaiya	VL	M	M
Rafid Rachaiya	VL	M	M	Selsata (Mazraat Dei	VL	VL	L	Tannoura	VL	M	M
Yanta	VL	L	ML								

## Beyrouth

### Beyrouth

Municipality	15-Jan	16-Jan	17-Jan	Municipality	15-Jan	16-Jan	17-Jan	Municipality	15-Jan	16-Jan	17-Jan
Achrafieh	L	M	M	Ain el-Mreisse	ML	M	M	Bachoura	ML	M	M
Beirut Central Distr	ML	M	M	Marfai	ML	M	M	Mazraa	L	M	M
Medaouar	L	M	M	Minet el-Hosn	ML	M	M	Mwssaitbeh	ML	M	M
Ras Beirut	ML	M	M	Rmeil	L	M	M	Saifi	L	M	M
Zqaq el-Blat	ML	M	M								



## نشرة الطقس الصادرة عن دائرة التقديرات في مصلحة الأرصاد الجوية

النشرة: الصباحية

السبت: ١٤ كانون الثاني ٢٠١٧

الحالة العامة: طقس متقلب يسيطر على الحوض الشرقي للمتوسط.

الطقس المتوقع في لبنان:

الأحد: غائم مع تساقط أمطار خفيفة متفرقة وتلوج على ارتفاع 1200م في الفترة الصباحية وانخفاض بدرجات الحرارة ، يتحوّل تدريجياً الى قليل الغيوم خلال النهار مع انخفاض بدرجات الحرارة. نحذر من تكون الجليد على الطرقات الجبلية ليلاً وساعات الصباح الأولى.  
الاثنين: قليل الغيوم الى غائم جزئياً بسحب مرتفعة مع ارتفاع بدرجات الحرارة وانخفاض نسبة الرطوبة . نحذر من تكون الجليد على الطرقات الجبلية ليلاً وساعات الصباح الأولى.

الإثنين		الأحد		السبت		درجات الحرارة المتوقعة	
٩/١٩	٩/١٩	٩/١٨	٨/١٨	٨/١٨	٨/١٨	صور	الساحل
١٢/١٨		١١/١٧		١١/١٧		بيروت	
٩/١٧		٨/١٦		٩/١٦		طرابلس	
٤/١٠	٣/١٠	٣/٧	٢/٧	٣/٩	٢/٩	بيصور	الجبال
٣/٩		٢/٦		٢/٨		قرطبا	
٥-/٦		٣-/٣		٢-/٥		الأرز	
٥/١٢	١/١٢	٤/٨	٠/٨	٥/١٠	١/١٠	مرجعيون	الداخل
١/١١		٠/٧		١/٩		زحلة	

الرياح السطحية: متقلبة، سرعتها بين ١٠ و ٣٠ كلم/س

الانقشاع: جيد الى متوسط.

الرطوبة النسبية على الساحل: بين ٥٠ و ٨٠%.

حال البحر: معتدل ارتفاع الموج.

الضغط الجوي: ١٠١٦ HPA

ساعة شروق الشمس: ٠٦:٤٣

حرارة سطح الماء: ١٧°م.

أي ما يعادل: ٧٦٢ ملم زئبق

ساعة غروب الشمس: ١٦:٥١