

Lebanon Fire Risk Bulletin



CIVIL DEDEFENCE

Refer to cadast table condition.

Please note that the indicated temperature is at 2 meters height from the ground.

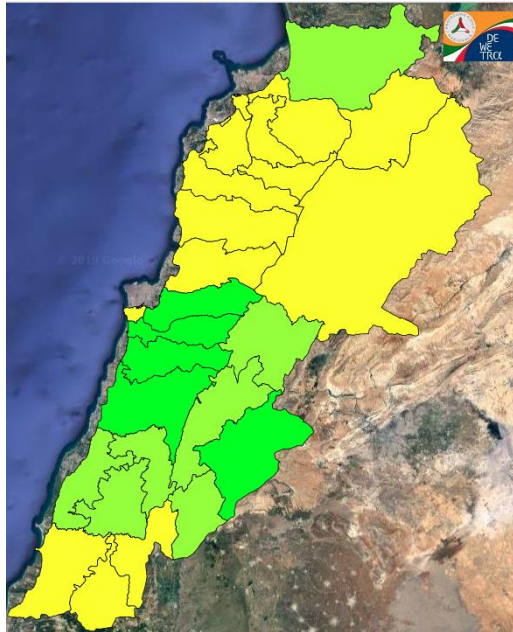
General description of potential fire risk situation

Symbol	Level of risk	Meaning and actions
VL	Very low	Very low fire risk. Controlled burning operations can be hardly executed due to high fuel moisture content. Normally wildfires self-extinguish.
L	Low	Low fire risk. Controlled burning operations can be executed with a reasonable degree of safety.
ML	Medium low	Medium-low fire risk. Controlled burning operations can be executed in safety conditions. All the fires need to be extinguished.
M	Medium	Medium fire risk. Controlled burning operations would be avoided. All the fires need to be very well extinguished.
M	Medium high	Controlled burning is not recommended. Open flame will start fires. Cured grasslands and forest litter will burn readily. Spread is moderate in forests and fast in exposed areas. Patrolling and monitoring is suggested. Fight fires with direct attack and all available resources.
H	High	Ignition can occur easily with fast spread in grass, shrubs and forests. Fires will be very hot with crowning and short to medium spotting. Direct attack on the head may not be possible requiring indirect methods on flanks. Patrolling and monitoring the territory is highly suggested.
E	Extreme	Ignition can occur also from sparks. Fires will be extremely hot with fast rate of spread. Control may not be possible during day due to long range spotting and crowning. Suppression forces should limit efforts to limiting lateral spread. Damage potential total. Patrolling and monitoring the territory is highly suggested.

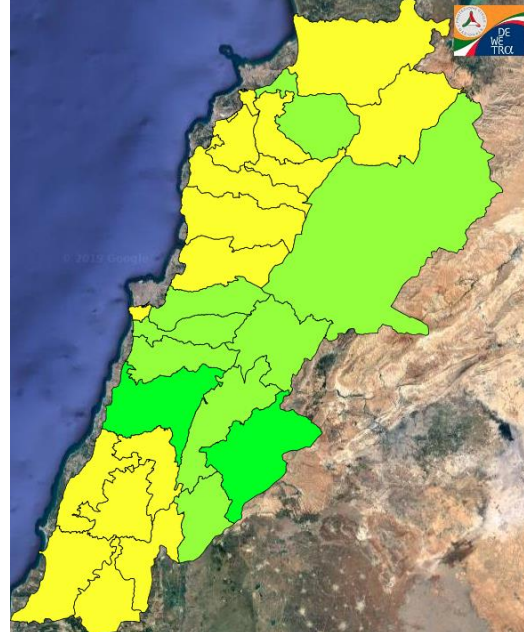
Beirut, 15 January 2020

FIRE RISK INDEX

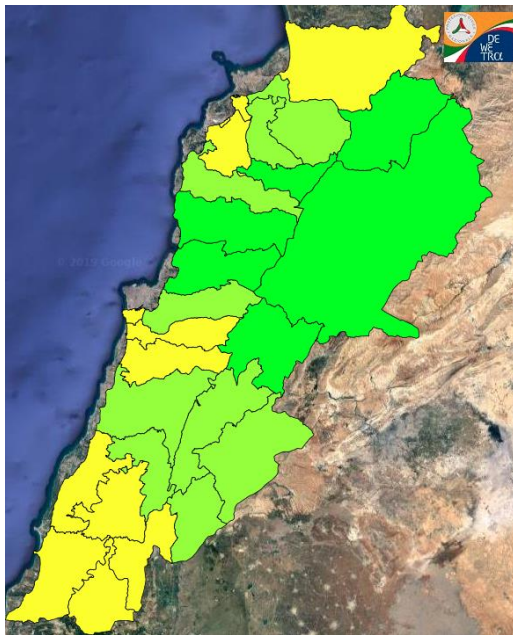
14 January 2020



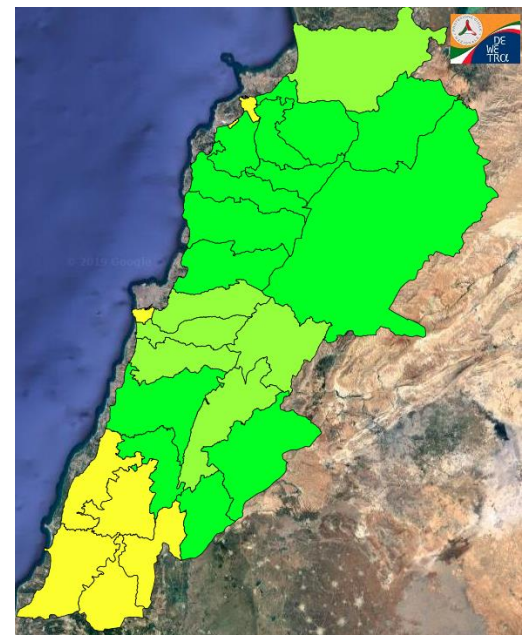
15 January 2020



16 January 2020



17 January 2020

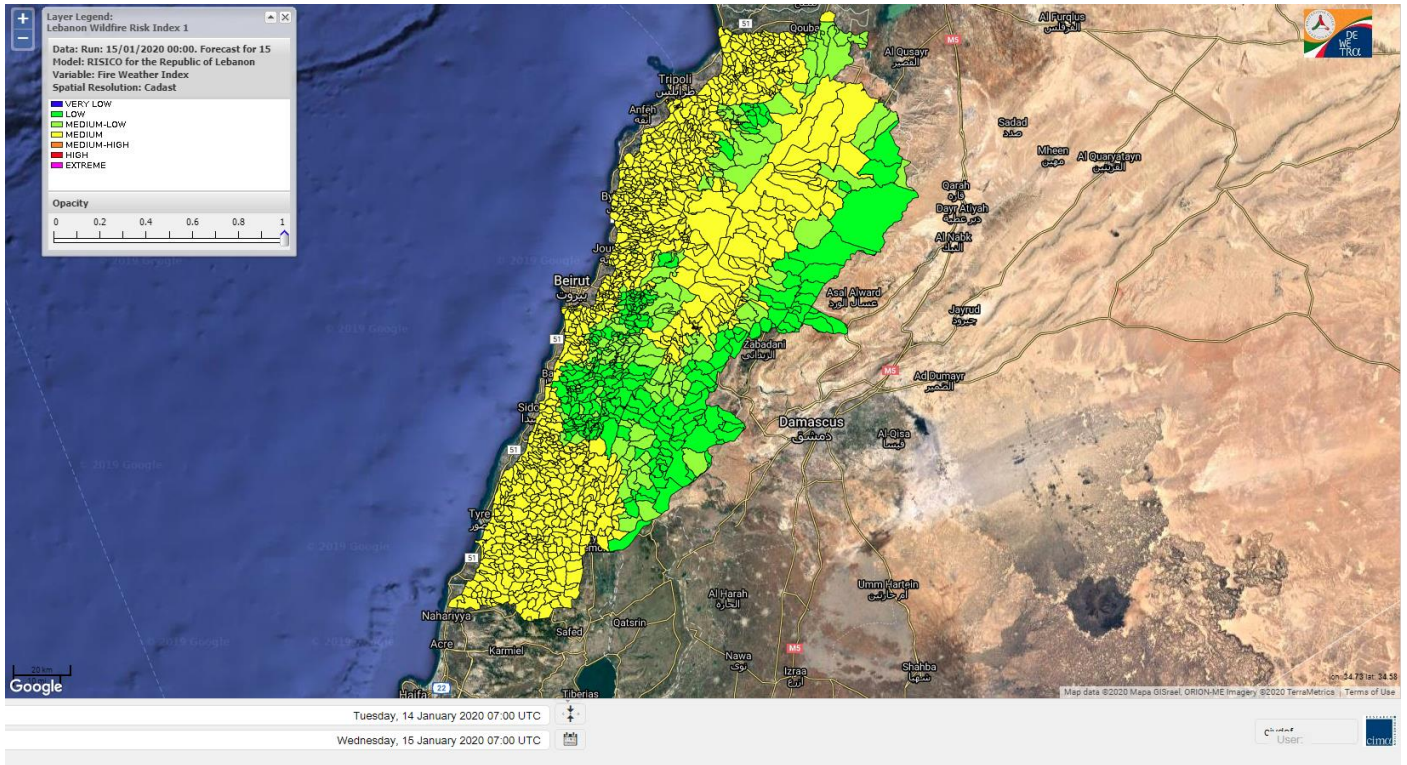


Layer Legend:
Lebanon Wildfire Risk Index 1

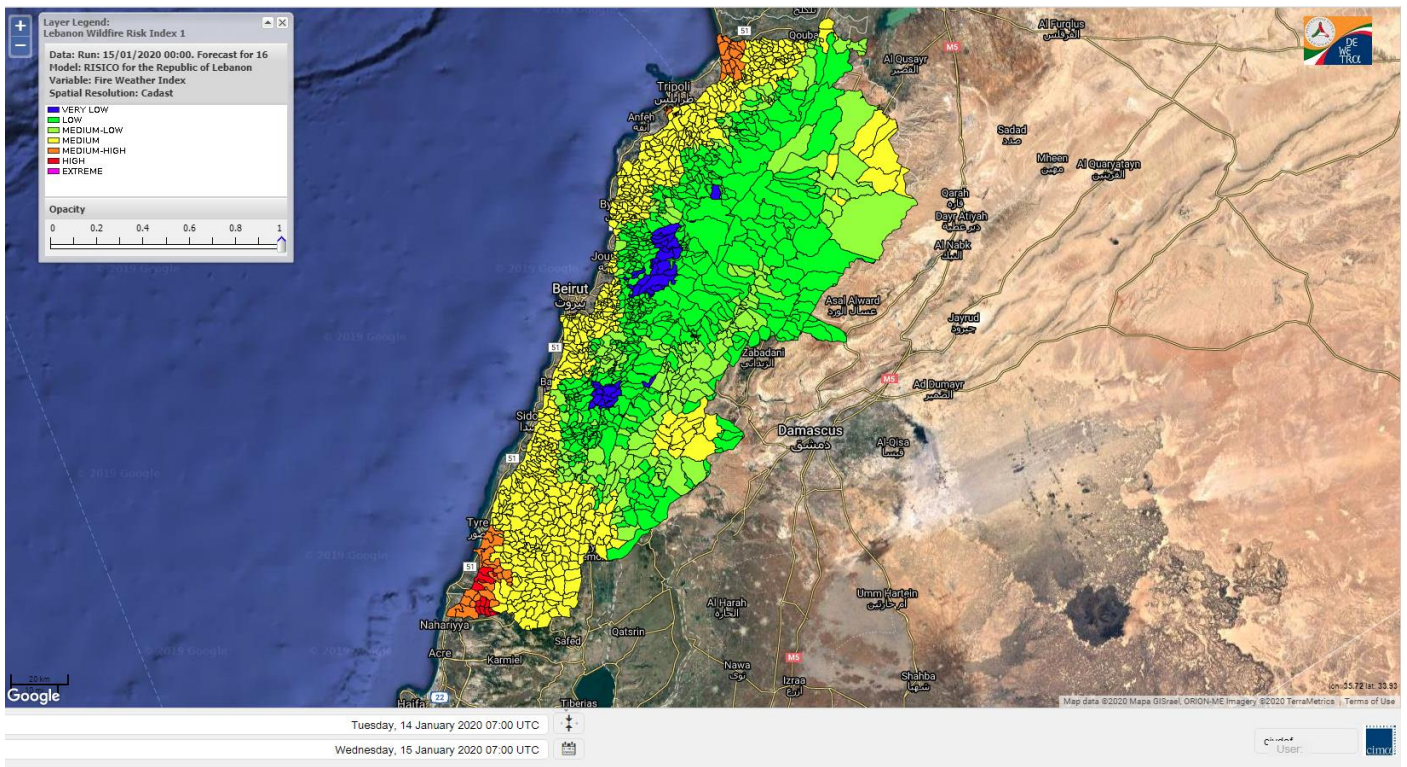
Data: Run: 15/01/2020 00:00. Forecast for 15
Model: RISICO for the Republic of Lebanon
Variable: Fire Weather Index
Spatial Resolution: Caza

- VERY LOW
- LOW
- MEDIUM-LOW
- MEDIUM
- MEDIUM-HIGH
- HIGH
- EXTREME

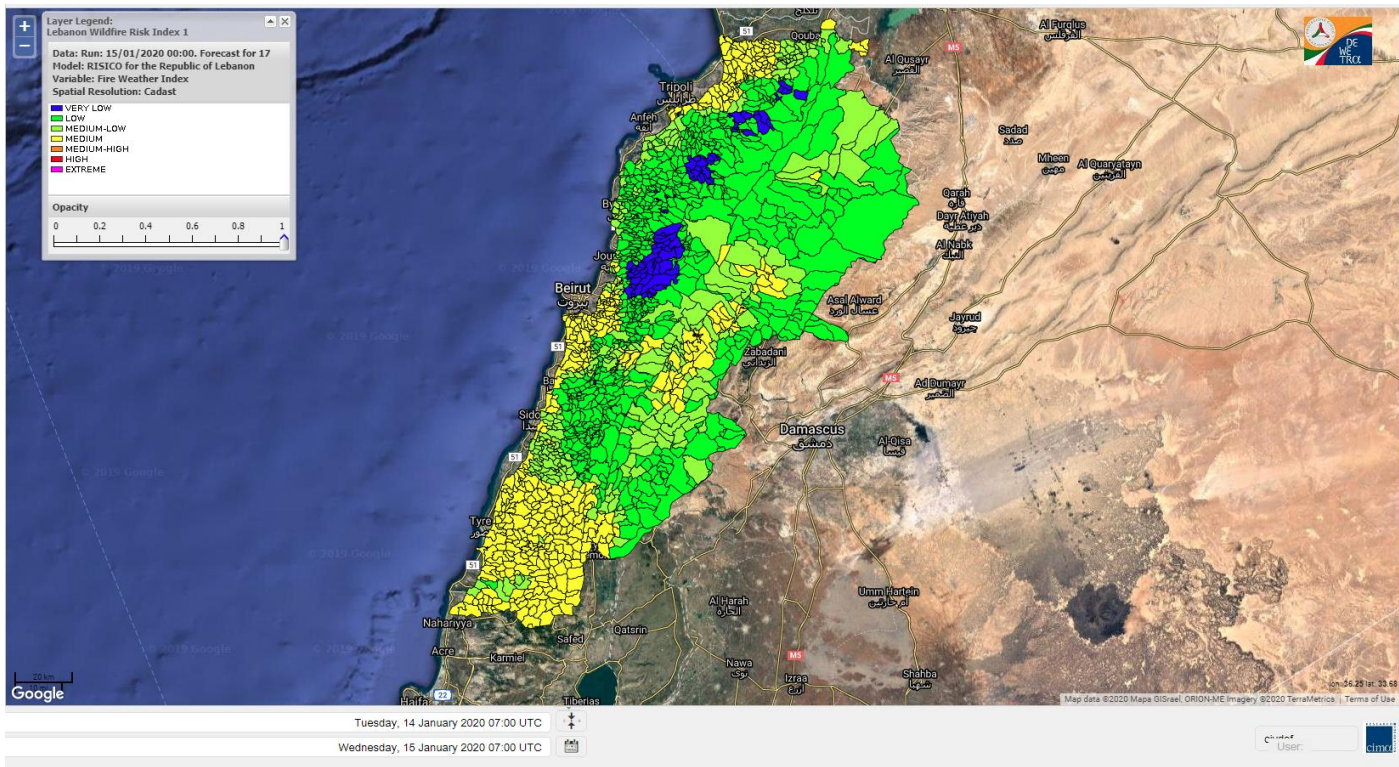
Lebanon for 15 January 2020



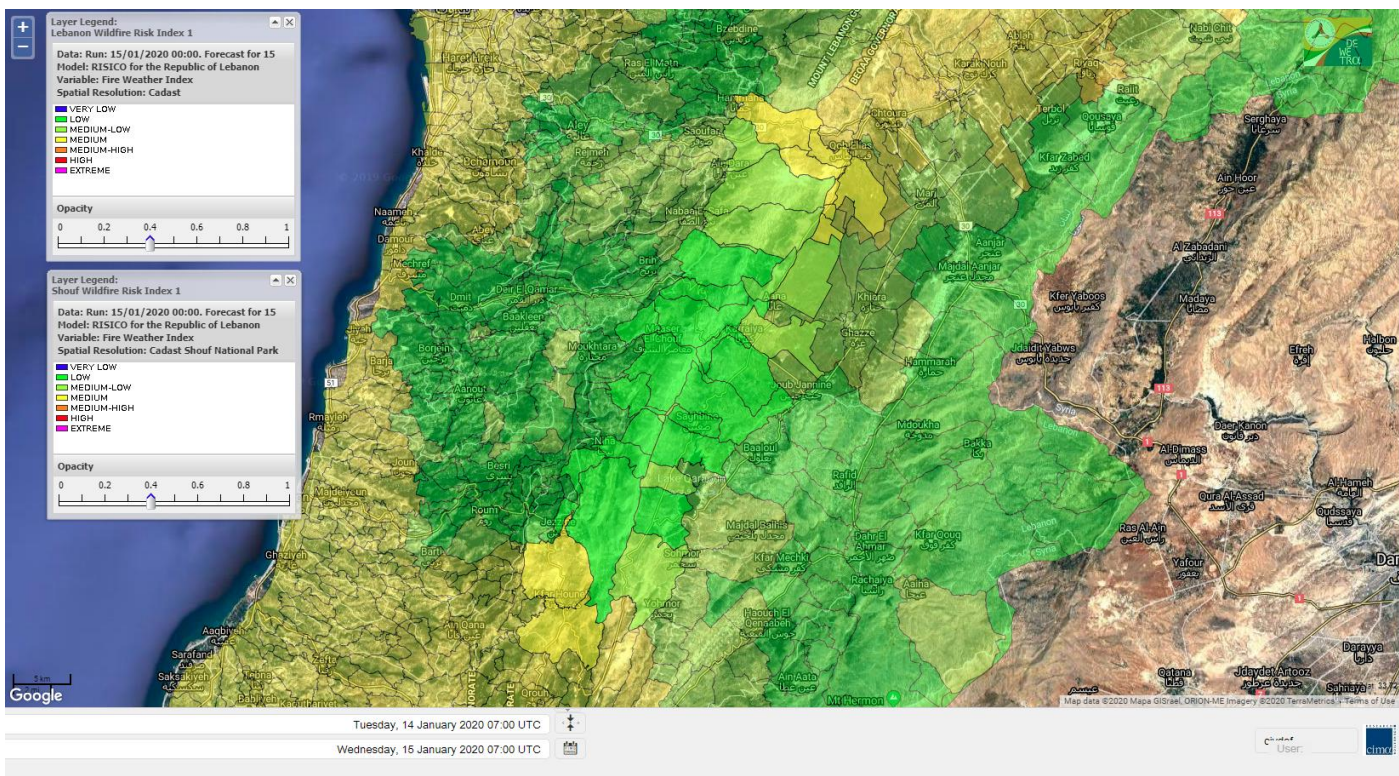
Lebanon for 16 January 2020



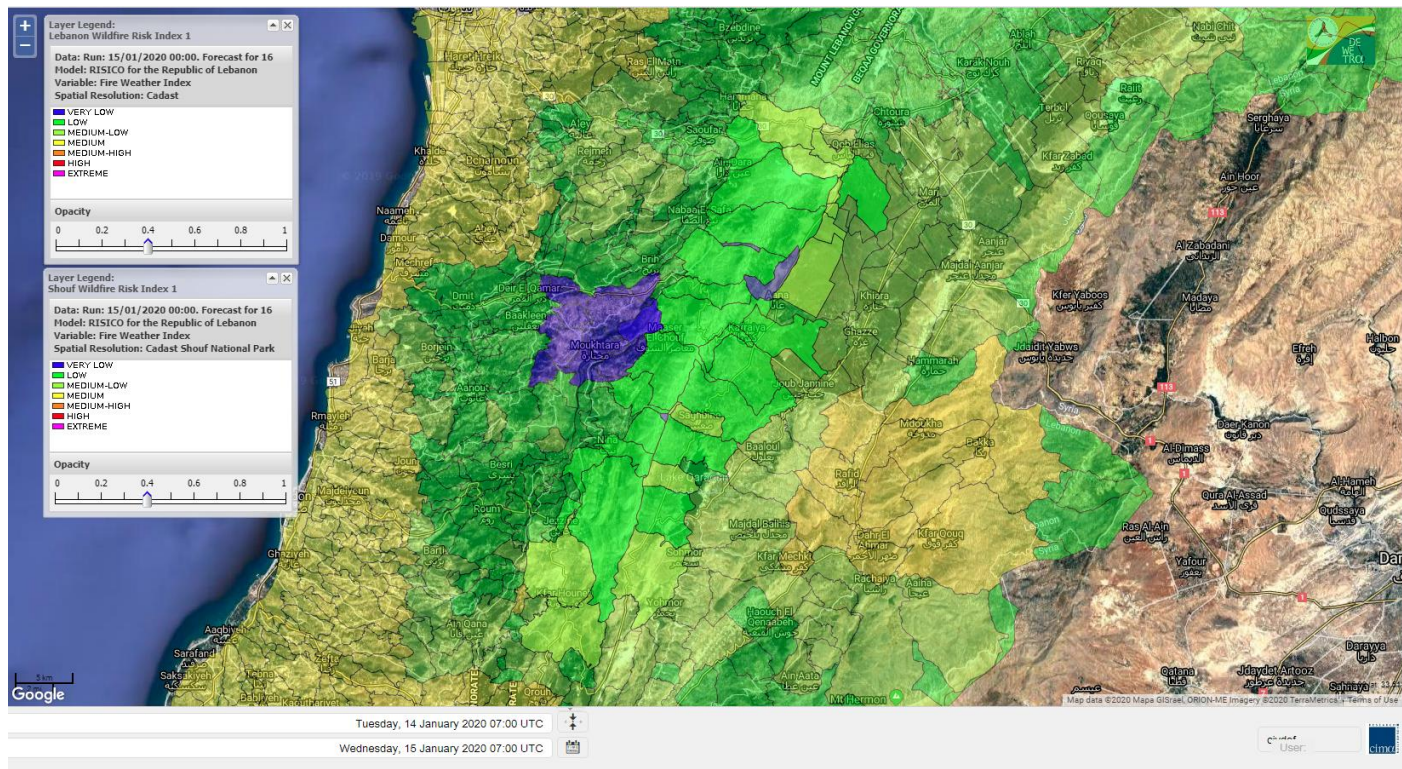
Lebanon for 17 January 2020



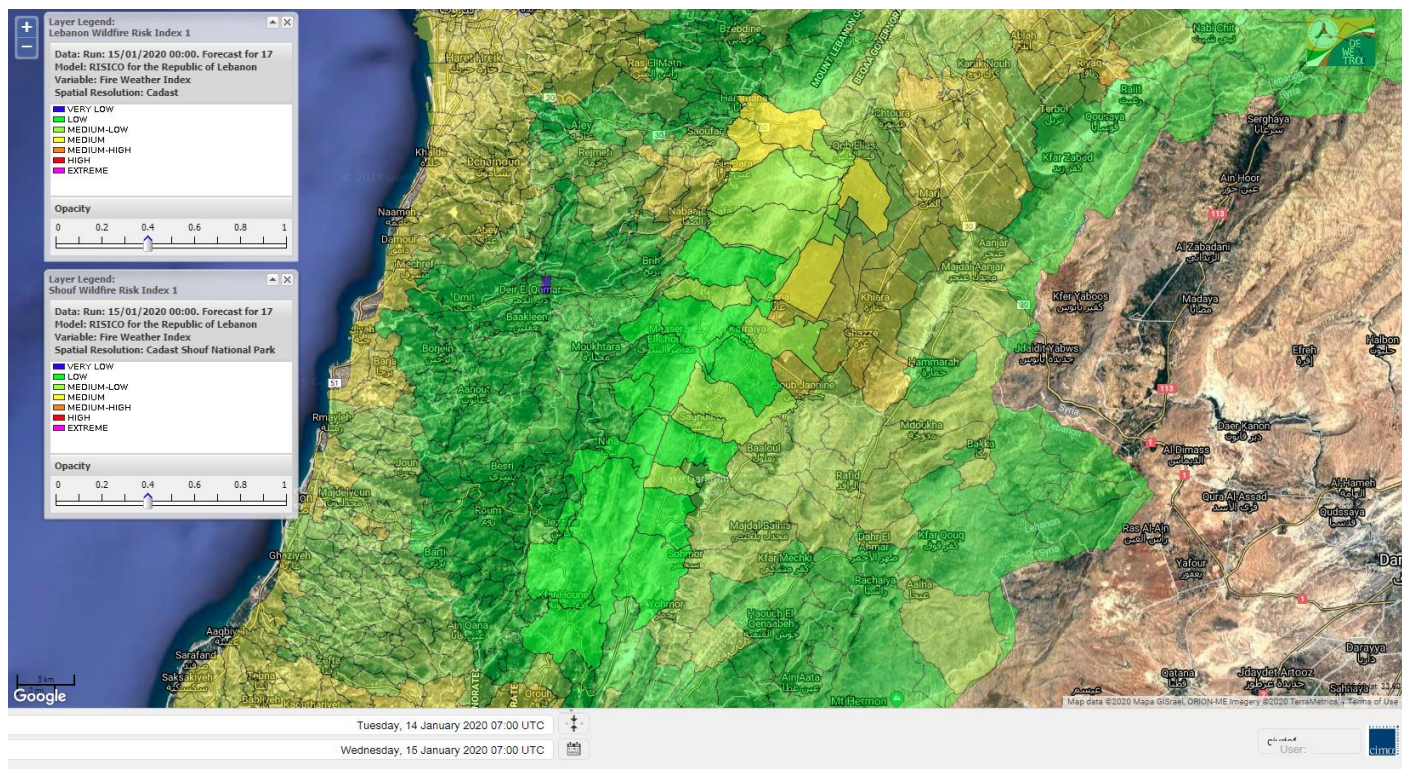
Shouf Biosphere Reserve Forecast for 15 January 2020



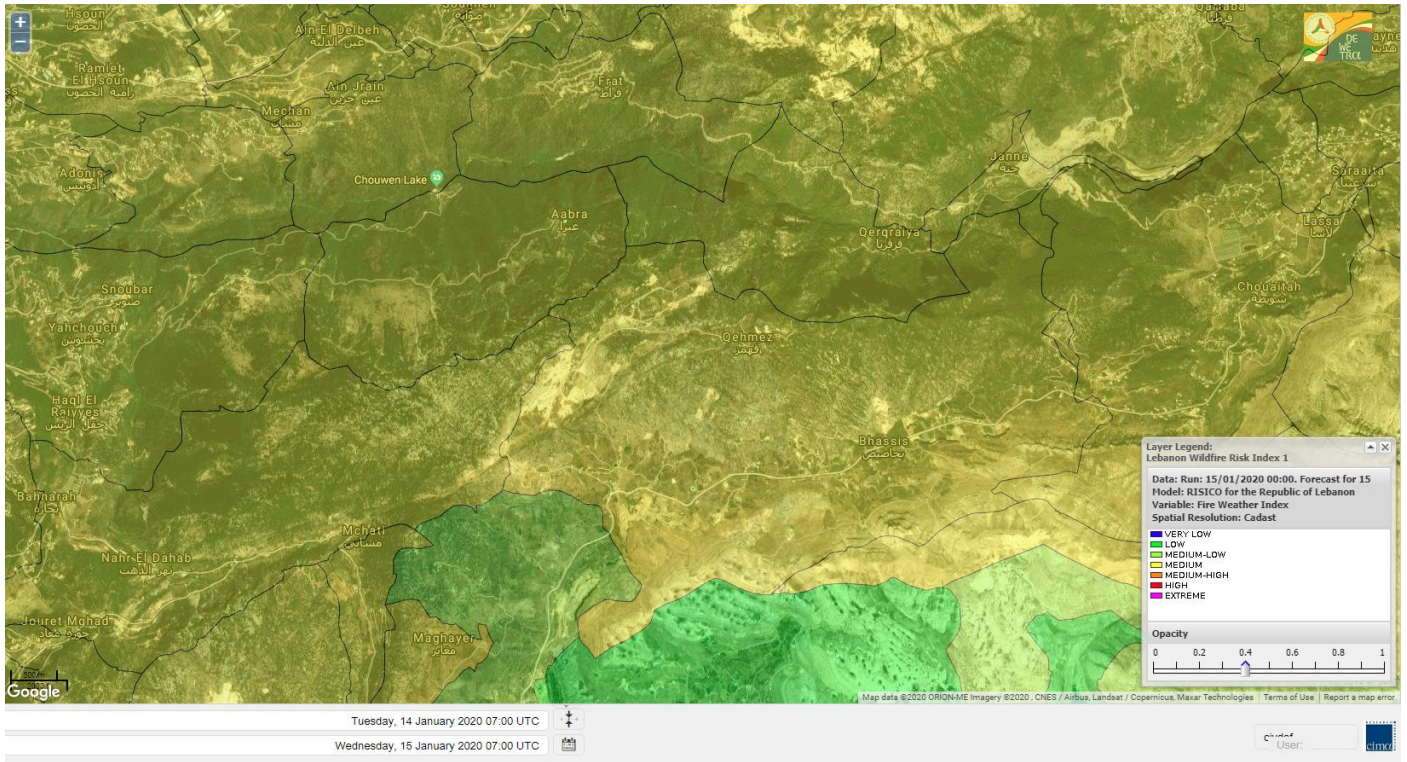
Shouf Biosphere Reserve Forecast for 16 January 2020



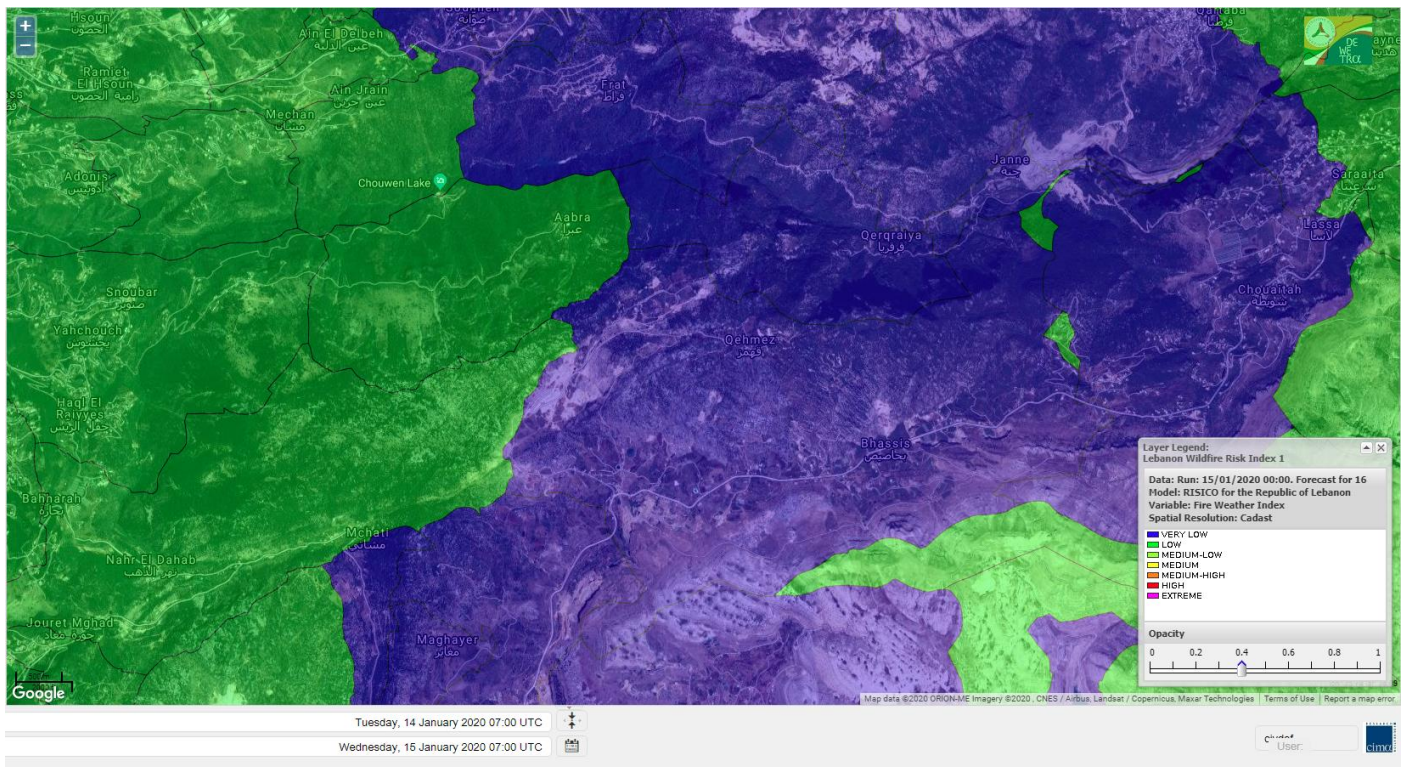
Shouf Biosphere Reserve Forecast for 17 January 2020



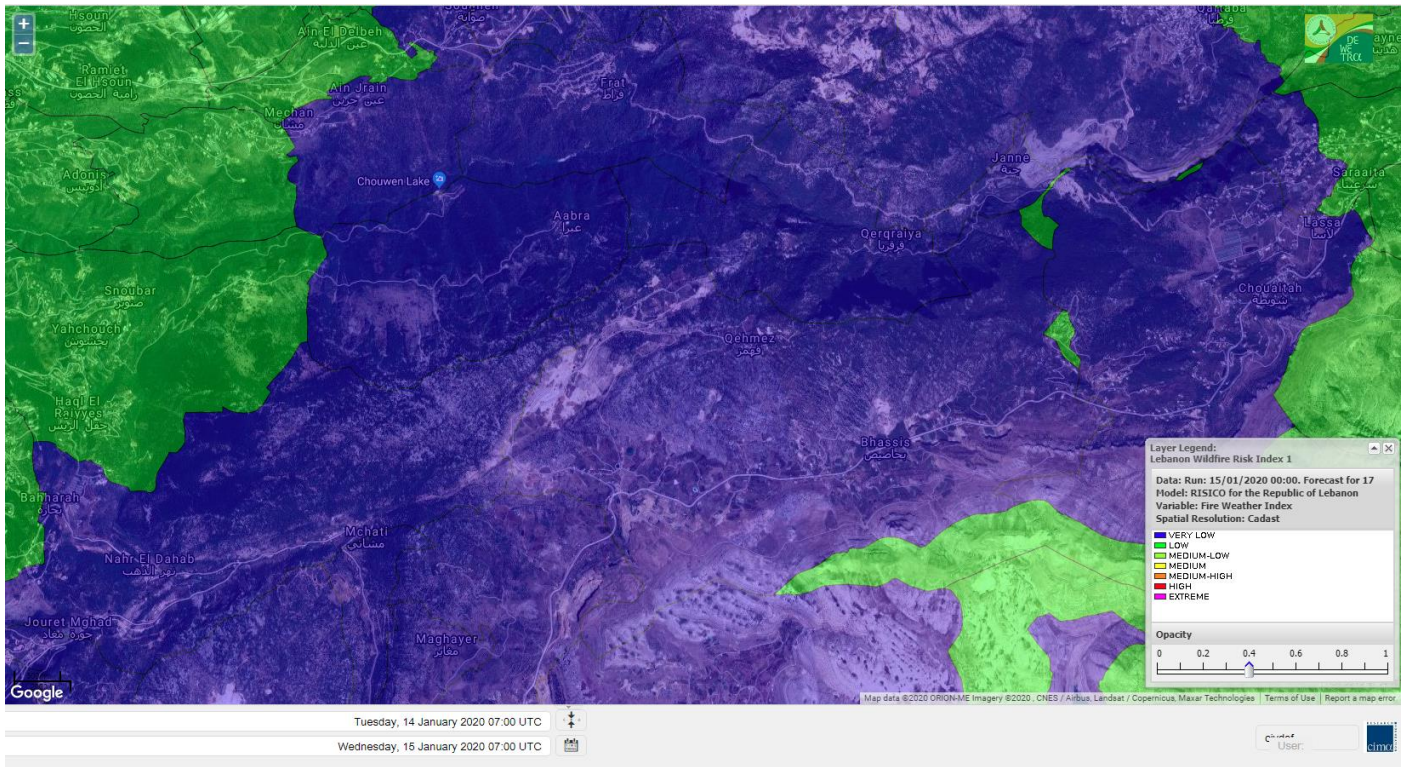
Jabal Moussa Reserve Forecast for 15 January 2020



Jabal Moussa Reserve Forecast for 16 January 2020



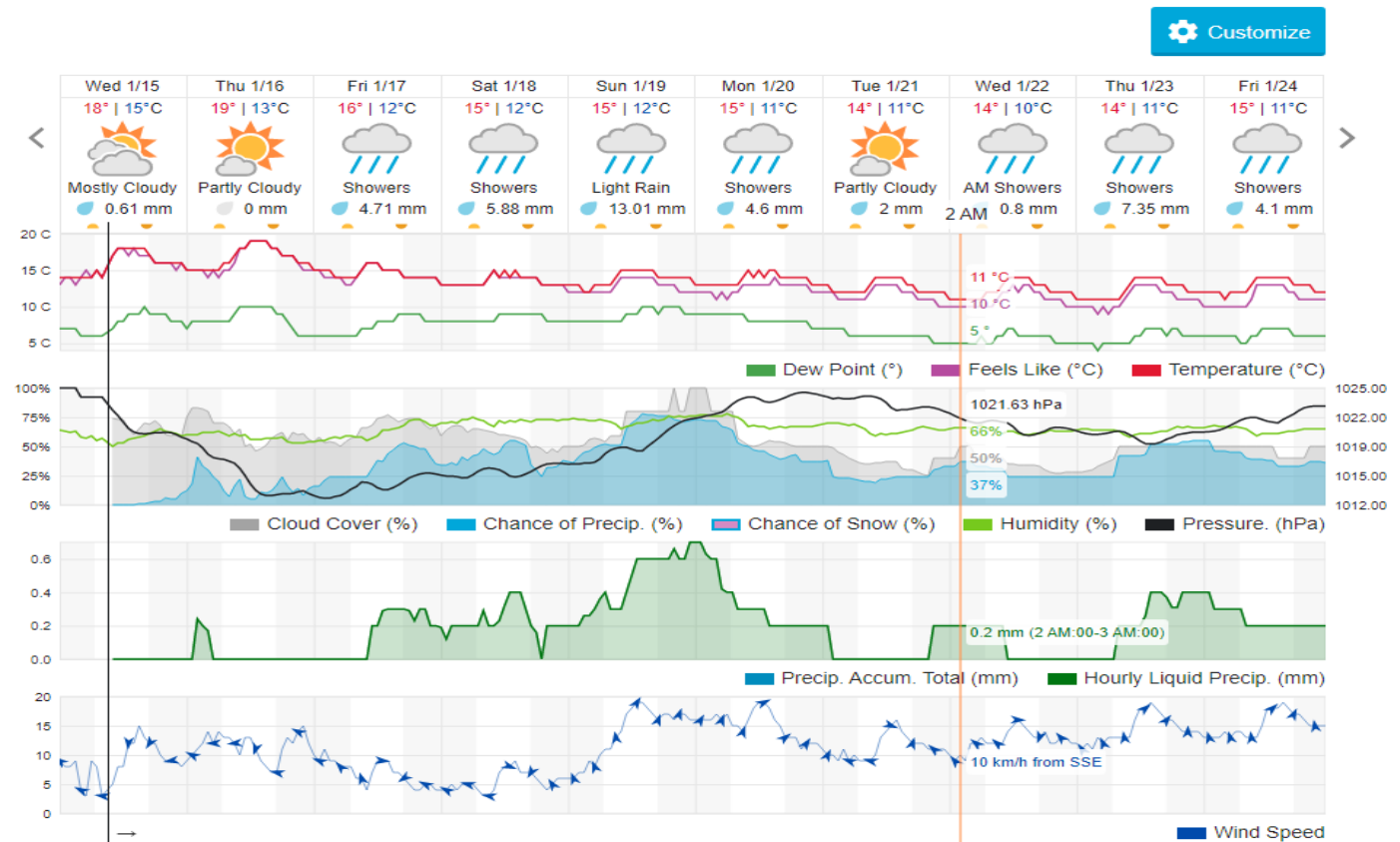
Jabal Moussa Reserve Forecast for 17 January 2020



Beirut, Beirut Governorate, Lebanon 10-Day Weather Forecast

16° ACHRAFIEH, RIZK STATION | CHANGE

TODAY HOURLY 10-DAY CALENDAR HISTORY WUNDERMAP



Nord

Koura

Municipality	15-Jan	16-Jan	17-Jan	Municipality	15-Jan	16-Jan	17-Jan	Municipality	15-Jan	16-Jan	17-Jan
Aaba	M	M	L	Afsaddiq	M	M	L	Ain Ekriane	M	M	L
Amioun	M	M	L	Anfeh	M	M	ML	Badbhoun	M	M	L
Barghoun	M	M	L	Barsa	M	M	ML	Batroumine	M	M	ML
Bdebba	M	M	ML	Bechmizine	M	M	L	Bednaye El-Koura	M	M	L
Bhabbouch El-Koura	M	M	L	Bkeftine	M	M	L	Bnehran	M	M	L
Bqaiia El-Koura	M	M	ML	Bsarma	M	M	L	Btaaboura	M	M	L
Bttram	M	M	L	Btouratij	M	M	ML	Bziza	M	M	L
Dar Beechtar	M	M	L	Dar Chmezzine	M	M	L	Deddeh	M	M	ML
Deir El-Balamand	M	M	L	Fih	M	M	ML	Hraiche	M	M	ML
Ijdaabrine	M	M	L	Kaftoun	M	M	L	Kefraya El-Koura	M	M	ML
Kfarakka	M	M	L	Kfarhata	M	M	L	Kfarhazir	M	M	L
Kfarkahel	M	M	ML	Kfarsaroun	M	M	L	Kosba	M	M	L
Mejdel el-Koura	M	M	L	Nakhle	M	M	ML	Qalhat	M	M	ML
Ras Masqa	M	M	ML	Rechdibbine	M	M	L	Zakroun	M	M	ML
Zgharta El-Mtaouile	M	M	L								

Bcharre

Municipality	15-Jan	16-Jan	17-Jan	Municipality	15-Jan	16-Jan	17-Jan	Municipality	15-Jan	16-Jan	17-Jan
Aabdine	M	L	VL	Bane	ML	L	L	Barhelioun	M	L	L
Bazooune	M	L	L	Becharre	ML	L	L	Beit Menzer	M	L	VL
Billa	M	L	VL	Blaouza	M	L	VL	Bqaa Kafra	M	L	L
Bqerqacha	M	L	L	Breissat	M	L	L	Dimane	ML	L	L
Hadath El Jobbeh	ML	L	L	Hadchit	ML	L	L	Hasroun	M	VL	L
Mazraat Aassaf	M	L	L	Mazraat Bani Saab	M	L	L	Mchaa El-Jobbeh	M	L	L
Metrit	M	M	L	Moghr El-Ahoual	M	L	VL	Ouadi Qannoubine	M	L	VL
Qanat	M	L	L	Qnayer	M	L	VL	Tourza	M	L	VL

Batroun

Municipality	15-Jan	16-Jan	17-Jan	Municipality	15-Jan	16-Jan	17-Jan	Municipality	15-Jan	16-Jan	17-Jan
Aabrine	M	M	L	Aalali	M	ML	L	Aartiz	M	M	L
Abdelli	M	M	L	Ajdabra	M	M	L	Assia	M	L	L
Basbina	M	M	ML	Batroun	M	M	ML	Bcheleh	M	ML	L
Bechtoudar	M	L	L	Beit Chlala	M	L	L	Beit Kassab	M	ML	L
Bijdarfil	M	M	L	Bqesmaya	M	M	L	Chatine	M	L	L
Chebtin	M	M	L	Chekka	M	M	ML	Daael	M	L	L
Dahr Abi Yaghi	M	M	L	Daraya El-Batroun	M	M	ML	Deir Billa	M	M	L
Deir Kfifane	M	M	L	Deir Mar Youhanna EL	M	L	VL	Deir Mar Youssef Jra	M	M	L
Douma	M	L	L	Douq	M	M	L	Eddeh El-Batroun	M	M	L
Ftatah El-Batroun	M	ML	L	Ghouma	M	M	L	Hadtoun	M	L	L
Hamat	M	M	L	Harbouna	M	M	L	Hardine	M	L	L
Helta	M	L	L	Hery	M	M	ML	Jebbla	M	ML	L
Jrabta El-Batroun	M	M	L	Jrane El-Batroun	M	M	ML	Kfar Aabida	M	M	L
Kfar Halda	M	L	L	Kfarb Shlaimane	M	L	VL	Kfarhatna	M	M	L

Kfarhay	M	M	L	Kfarhelos	M	M	L	Kfifane	M	M	ML
Kfour El Arabi	M	L	L	Koubba	M	M	L	Kour	M	M	L
Mar Mama	M	M	L	Masrah	M	M	L	Mehmarch	M	M	L
Mrah Chdid	M	M	L	Mrah El Ziyat	M	M	L	Mrah El-Hajj	M	L	VL
Nahle El-Batroun	M	L	VL	Niha El-Batroun	M	L	L	Oujah El-Hajjar	M	M	L
Ouata Houb	M	L	L	Qatnaaoun	M	M	L	Racha	M	ML	L
Rachana	M	M	L	Rachkida	M	M	L	Ram El-Batroun	M	L	L
Ras Nahhach	M	M	L	Selaata	M	M	ML	Sghar	M	M	L
Smar Jbayl	M	M	L	Sourat El-Batroun	M	M	L	Tannourine El-Faouqa	M	L	L
Tannourine Et-Tahta	M	L	L	Thoum	M	M	ML	Toula El-Batroun	M	M	L
Zan	M	M	L								

Zgharta

Municipality	15-Jan	16-Jan	17-Jan	Municipality	15-Jan	16-Jan	17-Jan	Municipality	15-Jan	16-Jan	17-Jan
Aachach	M	M	L	Aalma	M	M	L	Aarde	M	M	L
Aintourine	M	L	VL	Arabet Qozhaya	M	L	VL	Arde	M	M	L
Arjis	M	L	L	Asnoun	M	M	L	Ayto	M	L	VL
Basloukit	ML	L	L	Bchannine	M	M	L	Besebeel	M	M	L
Bhairret Toula	M	L	VL	Bnachee	M	L	L	Boussit	M	M	ML
Danha	M	M	L	Daraiya Zgharta	M	L	L	Deir Jdeide	M	M	L
Ehden	ML	L	L	Halan	M	M	L	Hariq Zgharta	M	M	L
Houakir	M	M	L	Hraiqis	M	M	M	laal	M	M	L
Ijbaa	M	L	VL	Karm Saddeh	M	L	VL	Kfarchakhna	M	M	L
Kfardlaqous	M	M	L	Kfarfou	M	L	VL	Kfarhata Zgharta	M	M	L
Kfarhoura	M	M	L	Kfarsghab	ML	L	L	Kfaryachit	M	M	L
Kfarzaina	M	M	L	Khaldiye	M	M	L	Mazraat Ajbeaa	M	M	L
Mazraat Et-Teffah	M	L	VL	Mazraat Jneid	M	M	L	Mejdlaia Zgharta	M	M	L
Merh Kfarsghab	M	ML	L	Miryata	M	M	L	Miziara	M	L	L
Mzraat Kefraya	M	M	ML	Qorah Bach	M	M	L	Rachiine	M	M	L
Ras Kifa	M	L	L	Sakhra	M	M	L	Sebhel Zgharta	M	L	VL
Serhel	M	L	VL	Tallet Zgharta	M	M	L	Toula Zgharta	M	L	VL
Zgharta	M	M	L								

Minieh-Denniye

Municipality	15-Jan	16-Jan	17-Jan	Municipality	15-Jan	16-Jan	17-Jan	Municipality	15-Jan	16-Jan	17-Jan
Aasaymout	L	L	VL	Aaymar	M	ML	L	Aazki	ML	M	L
Ain El-Tineh-Miniyeh	M	L	L	Assoun	M	ML	L	Bakhaaoun	ML	ML	L
Bchennata	L	L	L	Bechehhara	M	M	L	Beddawi	M	M	M
Behouaita	M	L	L	Beit El Foqss	ML	L	L	Beit Haouik	L	L	L
Beit Zoud	M	ML	L	Bekaasafrine	ML	L	L	Borj El Yahoudiyeh	M	M	M
Bqarsouna	ML	L	L	Btermaz	ML	L	VL	Debaael	L	L	VL
Deir Ammar	M	M	M	Deir Nbouh	M	M	L	Haouaret-Miniyeh	L	L	L
Haql el Azimeh	ML	L	L	Harf El Siyad	L	L	VL	Hazmiye-Miniyeh	M	L	L
Izal	M	M	L	Jarjour	M	M	L	Jayroun	L	L	VL
Kahf El-Malloul	M	ML	L	Karm El-Moher	ML	ML	L	Kfar Binine	L	L	L
Kfarchalane	ML	ML	L	Kfarhabou	M	M	L	Kharroub-Miniyeh	M	M	L
Mazraat El-Kreme	M	ML	L	Mazraat Ketrane	M	ML	L	Merkebta	M	M	M

Minyeh	M	M	M	Mrah El Sfirat	ML	L	VL	Mrah Sraj	ML	L	L
Mrebbine	ML	L	L	Nabi Youcheaa	M	M	M	Nemrine	L	L	L
Qarhaiya	L	L	L	Qarne	L	L	VL	Qarsita	L	L	VL
Qattineh-Miniyeh	ML	L	VL	Qemmamine	L	L	VL	Qraine	ML	L	L
Raouda-Aadoua	M	M	M	Rihaniyet-Miniyeh	M	M	M	Sfireh	ML	L	L
Sir Ed-Danniyeh	M	ML	L	Tarane	ML	L	VL	Terbol-Miniyeh	M	M	ML
Zaghartagrhrine	M	M	L	Zouq Bhannine	M	M	M				

Nabatiye

Nabatiye

Municipality	15-Jan	16-Jan	17-Jan	Municipality	15-Jan	16-Jan	17-Jan	Municipality	15-Jan	16-Jan	17-Jan
Aabba	M	M	M	Aazzi	M	M	ML	Adchit El-Chqif	M	M	M
Ain Bou Swar	M	ML	L	Ain Kana	M	ML	ML	Ali El-Taher	M	M	M
Ansar	M	M	M	Arab Salim	M	M	M	Arnoun	M	M	M
Bfaroue	M	M	M	Breyqaah	M	M	M	Charqiyeh	M	M	M
Choukine	M	M	M	Deir El Zahrani	M	M	M	Doueir El-Nabatiyeh	M	M	M
Habbouch El-Nabatiye	M	M	M	Hamra El-Nabatiyeh	M	M	M	Harouf El-Nabatiyeh	M	M	M
Hmaile	M	M	M	Houmin El Faouqa	M	M	M	Houmin El Tahta	M	M	ML
Jarjough	M	M	ML	Jbaah El-Nabatiyeh	M	ML	L	Jebchit	M	M	M
Kfar Djal El-Nabatiy	M	M	M	Kfar Remmane	M	M	M	Kfar Sir	M	M	M
Kfar Tebnit	M	M	M	Kfarfila	M	ML	ML	Kfour El-Nabatieh	M	M	M
Mayfadoun	M	M	M	Mazraat Bsaffour	M	M	M	Mazraat Chalbaal	M	M	M
Mazraat Dmoul	M	M	M	Mazraat El Khreibeh	M	M	ML	Mazraat El-Bayad El-	M	M	M
Mazraat Kfarjaouz	M	M	M	Mazraat Qalaat Meiss	M	M	M	Nabatiyeh El-Fawka	M	M	M
Nabatiyeh Et-Tahta	M	M	M	Namiriyeh	M	M	M	Qaaqaiyet El Jisr	M	M	M
Qossaibeh El-Nabatiy	M	M	M	Roumine	M	M	ML	Sarba El-Nabatieh	M	ML	ML
Sir El-Gharbiyeh	M	M	M	Toul	M	M	M	Yehmor El-Nabatiyeh	M	M	M
Zaoutar El Charkiyeh	M	M	M	Zaoutar El-Gharbiyeh	M	M	M	Zebdine El-Nabatiyeh	M	M	M
Zefta	M	M	M								

Hasbaiya

Municipality	15-Jan	16-Jan	17-Jan	Municipality	15-Jan	16-Jan	17-Jan	Municipality	15-Jan	16-Jan	17-Jan
Aain Jarfa	L	L	L	Abou Qamha	M	ML	ML	Ain Qania	L	L	L
Bourghos	M	ML	ML	Chebaa	ML	L	L	Chouaya Hasbaya	L	L	L
Dellafeh	M	M	ML	Fardiss Hasbaiya	M	ML	ML	Hasbaya	ML	ML	L
Hbariyeh	L	L	L	Kaoukaba Hasbaiya	M	M	ML	Kfar Chouba	ML	ML	L
Kfar Hamam	ML	L	L	Kfeir El-Zait	ML	L	L	Khalwat Hasbaya	L	L	L
Khreibet Hasbaiya	M	M	M	Majidiyeh Hasbaiya	M	M	ML	Marj Ez-Zhour (Haouc	ML	L	L
Meri	M	M	M	Mimass	ML	L	L	Rachaiya El-Fokhar	M	ML	ML
Salaiyeb	M	M	M								

Marjayoun

Municipality	15-Jan	16-Jan	17-Jan	Municipality	15-Jan	16-Jan	17-Jan	Municipality	15-Jan	16-Jan	17-Jan
Aalmane Marjaayoun	M	M	M	Aamra	M	M	M	Adayseh Marjaayoun	M	M	M
Adchit El-Koussair	M	M	M	Ain Aarab Marjaayoun	M	M	M	Bani Haiyann	M	M	M
Blatt Marjaayoun	M	M	ML	Blida	M	M	M	Borj El-Moulouk	M	M	M

Boueyda Marjaayoun	M	M	ML	Deir Mimass	M	M	M	Deir Siriane	M	M	M
Dibbine	M	M	ML	Ebel El Saqi	M	M	M	Houla	M	M	M
Houra	M	M	M	Kfar Kila	M	M	M	Khiam Marjaayoun	M	M	M
Klayaa	M	M	M	Majdel Selem	M	M	M	Marjaayoun	M	M	M
Markaba	M	M	M	Mays El-Jabal	M	M	M	Mazraat Doumiat	M	M	M
Mazraat Sarada	M	M	M	Mhaibib	M	M	M	Qabrikha	M	M	M
Qantara	M	M	M	Rab El-Thalathine	M	M	M	Saouaneh Marjayoun	M	M	M
Talloussa	M	M	M	Taybeh Matjaayoun	M	M	M	Touline	M	M	M

Bent Jbail

Municipality	15-Jan	16-Jan	17-Jan	Municipality	15-Jan	16-Jan	17-Jan	Municipality	15-Jan	16-Jan	17-Jan
Ain-Ebel	M	M	M	Aitaroun	M	M	M	Aynata Bint Jbeil	M	M	M
Ayta El-Chaeb	M	M	M	Ayta El-Jabal	M	M	M	Beit Lif	M	M	M
Beit Yahoun	M	M	M	Bint Jbeil	M	M	M	Borj Qalaway	M	M	M
Braachit	M	M	M	Chakra	M	M	M	Debel	M	M	M
Deir Antar	M	M	M	Froun	M	M	M	Ghandouriyeh Bint Jb	M	M	M
Hanine	M	M	M	Hariss	M	M	M	Hdatha	M	M	M
Jmeyjmeh	M	M	M	Kafra Bint Jbeil	M	M	ML	Kfar Dounine	M	M	M
Khirbet Selm	M	M	M	Kounine	M	M	M	Maroun El Ras	M	M	M
Qalaway	M	M	M	Qaouzah	M	M	M	Qatmoun	M	M	M
Ramya Bint Jbeil	M	M	M	Rchaf	M	M	M	Rmeich	M	M	M
Safad Al Battikh	M	M	M	Salhaneh	M	M	M	Serbine	M	M	M
Sultanieh Bint Jbeil	M	M	M	Tibnine	M	M	M	Tiri	M	M	M
Yaroun	M	M	M	Yater	M	M	M				

Mont Liban

Jbail

Municipality	15-Jan	16-Jan	17-Jan	Municipality	15-Jan	16-Jan	17-Jan	Municipality	15-Jan	16-Jan	17-Jan
Aabeydat	M	M	L	Aalita	M	L	L	Aamchit	M	M	ML
Aarab El-Lahib	ML	VL	L	Aarasta	M	L	L	Adonis Jbeil	M	L	L
Afqa Jbeil	M	L	L	Ain El Delbeh Jbeil	M	L	L	Ain El-Ghouyba	M	VL	VL
Ain Jrain	M	L	VL	Ain Kfah	M	M	L	Almat El Chemaliyat	M	VL	VL
Almat El-Jenoubiya	M	VL	VL	Aqoura	M	L	ML	Bayzoun	M	L	L
Bchille Jbeil	M	L	L	Bechtlida	M	L	L	Behdaydat	M	M	L
Beit Habbaq	M	M	L	Bejjeh	M	M	L	Bekhaaz	M	M	ML
Berbara Jbeil	M	M	ML	Bintael	M	L	L	Birket Hjoula	M	L	L
Blatt Jbeil	M	L	L	Boulhos	M	VL	VL	Breyj Jbeil	M	L	L
Chamat	M	M	ML	Chikhane	M	M	ML	Chmout	M	M	L
Eddeh Jbeil	M	ML	L	Ehmej	M	VL	VL	Fatre	M	L	L
Ferhet	M	L	L	Fghal	M	M	L	Frat	M	VL	VL
Ghabat	M	L	L	Ghalboun	M	M	L	Gharzouz	M	M	ML
Ghofrine	M	M	ML	Habil	M	M	L	Halate	M	ML	L
Haqel	M	M	L	Hbaline	M	M	L	Hboub	M	L	L
Hdeine	M	L	L	Hema Er-Rehban	M	L	L	Hema Mar Maroun Aann	M	VL	VL
Hjoula	M	L	L	Hosrayel	M	M	ML	Hsarat	M	M	L

Hsoun	M	L	L	Jaj	M	ML	L	Janne	M	VL	VL
Jbeil	M	M	ML	Jeddeyl Jbeil	M	M	ML	Jlisse	M	L	L
Jouret El-Qattine	M	L	L	Kfar Baal Annaya	M	L	L	Kfar Kidde	M	M	ML
Kfar Kouas	M	L	L	Kfar Mashoun	M	M	L	Kfoun	M	M	L
Kharbe Jbeil	M	M	L	Laqlouq	M	L	L	Lassa	M	VL	VL
Lehfed	M	L	L	Maad	M	M	L	Mar Sarkis	M	L	L
Mastita	M	M	ML	Mayfouq	M	ML	L	Mazraat El Siyad	M	L	L
Mazraat El-Maaden	M	VL	VL	Mechane	M	L	L	Mechmech Jbeil	M	L	L
Mehrin	M	L	L	Mejdel El-Akoura	M	L	L	Mghayreh Jbeil	M	L	L
Mounsef	M	M	ML	Nahr Ibrahim	M	M	ML	Qahmez	M	VL	VL
Qartaba	M	VL	VL	Qartaboun	M	M	ML	Qattara Jbeil	M	L	VL
Qorqraya	M	VL	VL	Ramout	M	M	L	Ras Osta	M	L	L
Rihane Jbeil	M	M	ML	Sakiet El-Khayt	M	M	L	Saqi Richmaya	M	L	L
Sebrine	M	L	L	Seraita	M	L	L	Souane Jbeil	M	VL	VL
Tadmor	M	L	ML	Tartej	M	ML	L	Torzaiya	M	L	L
Yanouh Jbeil	M	L	L	Zibdine Jbeil	M	L	L				

El Metn

Municipality	15-Jan	16-Jan	17-Jan	Municipality	15-Jan	16-Jan	17-Jan	Municipality	15-Jan	16-Jan	17-Jan
Aain El-Qabu	ML	L	L	Aain El-Qach	L	L	L	Aain El-Teffaha	L	L	L
Aain el-Safssaf El-M	L	L	L	Abou Mizane	L	L	L	Ain Aar	M	M	M
Ain Alaq	M	M	M	Ain El-Kharroube	L	L	L	Ain El-Sendianeh	L	L	L
Ain El-Zeitoune	L	L	L	Ain Saadeh	M	M	M	Aintoura El-Matn	ML	L	L
Amaret Chalhoub	M	M	M	Antelias	M	M	M	Atchaneh	M	M	M
Ayroun	L	L	L	Baabdat	L	L	L	Baouchariyeh	M	M	M
Baskinta	ML	L	L	Beit Chabab	L	L	L	Beit El-Chaar	M	M	M
Beit El-Kekko	M	M	M	Beit Mery	ML	M	M	Bhersaf	L	ML	L
Bikfaya	L	L	L	Biyakout	M	M	M	Bnabil	L	L	L
Bourj Hammoud	M	M	M	Bqennaya	M	M	M	Broummana El-Matn	M	M	M
Bsalim	M	M	M	Bsifrine	L	L	L	Bteghrine	L	L	L
Chaouiye	M	M	M	Chouaya El-Matn	L	L	L	Choueir	L	L	L
Chrine	L	L	L	Dahr El Sawan El-Mat	ML	M	ML	Daychouniyeh	ML	M	ML
Dbayeh	M	M	M	Deir Chamra	ML	L	L	Deir Mar Abda el Mch	M	M	M
Deir Mar Roukouz	M	M	M	Deir Tamiche	M	M	M	Dik El-Mehdi	M	M	M
Dikwaneh	M	M	M	Douar El-Matn	L	L	L	Fanar	M	M	M
Fraike	ML	M	M	Haret El-Ballaneh	M	M	M	Hbous	M	M	M
Himlaya	L	L	L	Jal El Did	M	M	M	Jdeideh El-Metn	M	M	M
Jouar El-Matn	L	L	L	Jouret El-Ballout	M	M	M	Kaaqour	L	L	L
Kfar Aaqab	L	L	L	Kfertay El-Matn	ML	VL	VL	Khenchara	L	L	L
Khillet El-Mtain	L	L	L	Konnabat Broummana	M	M	M	Konnabat Salima	L	L	L
Machraah El-Matn	L	L	L	Majdel Tarchich	ML	L	L	Majzoub	M	M	M
Mansouriyeh El-Metn	M	M	M	Mar Boutros Karm Et-	L	L	L	Mar Chaya et Mzekke	M	M	M
Mar Moussa Ed-Douar	L	L	L	Marjaba	L	L	L	Masqa	ML	M	M
Mayasse	L	L	L	Mazraat Deir Aoukar	M	M	M	Mazraat El-Hadirat	M	M	M
Mazraat Yachouh	M	M	M	Mchikha	L	L	L	Menqlet Mezher	M	M	M
Mhayseh Matn	L	L	L	Mkalles	M	M	M	Mrouj	ML	L	L

Mtain	ML	L	ML	Mtayleb	M	M	M	Nabay	M	M	M
Naccache	M	M	M	Ouadi Chahine	L	L	L	Ouadi El-Karm El-Mat	M	L	VL
Ouata El-Mrouj	L	L	L	Ouyoun El-Matn	ML	M	M	Qornet Chehwan	M	M	M
Qornet El-Hamra	M	M	M	Roumieh	M	M	M	Sfeilet Bikfaya	L	L	L
Sinn El-Fil	M	M	M	Zabbougha	M	L	VL	Zalqa	M	M	M
Zarououn	L	L	L	Zekrite	M	M	M	Zighrine El-Matn	L	L	L
Zouk El-Khrab	M	M	M								

Chouf

Municipality	15-Jan	16-Jan	17-Jan	Municipality	15-Jan	16-Jan	17-Jan	Municipality	15-Jan	16-Jan	17-Jan
Aalmane El-Chouf	M	M	M	Aammqi El-Chouf	L	VL	L	Ain Ouzein	L	VL	L
Ain Qani	L	L	L	Ain Zhalta	L	L	L	Ainbal	L	L	L
Amatour	L	L	L	Anout	L	L	L	Atrine	L	VL	L
Baadarane	L	L	L	Baaqline	L	L	L	Baasir	M	M	M
Barja	M	M	M	Barouk	L	L	L	Bater	L	L	L
Batloun	L	VL	L	Bayqoun	ML	ML	L	Bchetfine	L	L	L
Beiteddine	L	VL	L	Benouati Ech-Chouf	L	L	L	Berjein	L	L	L
Bireh et Mtalleh	L	VL	L	Biret El-Chouf	L	L	L	Bkechtine Ouel Mchei	L	L	L
Bkifa El-Chouf	L	L	L	Botme	L	VL	L	Bqaiaa Ech-Chouf	L	L	L
Bsaba El-Chouf	L	L	L	Chammis El-Chouf	M	M	ML	Chehim	L	ML	L
Chemaarine	L	L	L	Chourit	L	L	L	Daher El-Chouf	M	M	M
Dalhoun	ML	M	ML	Damour	M	M	M	Daraya El-Chouf	L	L	L
Deir El-Moukhalles	L	L	L	Deir Baba	L	L	L	Deir Dourit	L	L	L
Deir El-Qamar	L	L	L	Deir Kouche	L	L	L	Dibbieh	L	ML	L
Dmit	L	L	L	Fouara Jaafar	L	VL	L	Fraidis El-Chouf	L	L	ML
Ghabet Jaafar	L	L	L	Gharife	L	L	L	Haret Jandal	L	L	L
Hasrout	ML	ML	L	Jadra	M	M	ML	Jahlieh	L	L	L
Jbeih El-Chouf	L	L	L	Jdeidet El-Chouf	L	VL	L	Jiyeh	M	M	M
Jleiliyeh	L	L	L	Jmailiyeh	M	M	ML	Joun	M	M	ML
Kahlounie El-Chouf	ML	L	L	Ketermaya	M	M	ML	Kfar Faqoud	L	L	L
Kfar Hamal	ML	L	L	Kfar Him	ML	L	L	Kfar Katra	L	VL	L
Kfar Niss	L	L	L	Kfar hay	L	L	L	Kfarnabrakh	L	VL	L
Khirbet Bisri	L	L	L	Knayse El-Chouf	L	VL	VL	Maaniyeh	M	M	ML
Maasser Beiteddine	L	VL	L	Maasser El-Chouf	L	L	L	Majdalouna	M	M	ML
Majdel El-Meouch	L	L	L	Mazboud	ML	L	L	Mazmoura	L	L	L
Mazraat El Chouf	L	L	L	Mazraat El Daher	L	L	L	Mazraat El-Douair	L	VL	L
Mechref	L	L	L	Mghairie	M	M	ML	Mghayrie El-Chouf	L	L	L
Moukhtara	L	VL	L	Mrusti	L	L	L	Mtolle	ML	L	L
Naameh	M	M	M	Niha El-Chouf	L	L	L	Ouadi Abou Youssef	L	L	L
Ouadi Ed-Deir	ML	L	L	Ouadi El-Sit	L	VL	L	Ouadi bnehlay	L	L	L
Qraibeh	L	L	L	Qreiaa	L	L	L	Rmayle El-Chouf	M	M	M
Semqaniyeh	ML	VL	L	Sibline	M	M	ML	Sirjbeil	L	L	L
Warhanieh	L	L	ML	Werdaniyeh	M	M	ML	Zaarourieh	L	L	L

Baabda

Municipality	15-Jan	16-Jan	17-Jan	Municipality	15-Jan	16-Jan	17-Jan	Municipality	15-Jan	16-Jan	17-Jan
Abadiyeh	L	ML	L	Ain Mouaffaq	L	L	L	Araiya	L	L	L

Arbaniyeh	L	L	L	Arsoun	L	L	L	Baabda	M	M	M
Baalchmey	ML	ML	ML	Bmaryam	ML	L	L	Bourj El-Brajneh	M	M	M
Boutchay	M	M	M	Bsaba Baabda	M	M	M	Btekhney	L	L	L
Btibyat	L	L	L	Bzbedine	L	L	L	Chbeniyeh	ML	L	ML
Chiyah	M	M	M	Chmeisset Baabda	L	L	L	Chouit	L	L	L
Deir El-harf	L	L	L	Deir Khouna	L	L	L	Dlaybeh	L	L	L
Falougha	M	ML	M	Furn El-Chebbak	M	M	M	Hadath Beyrouth	M	M	M
Halaliyeh Baabda	L	L	L	Hammana	ML	L	M	Haret El Sett	L	ML	L
Haret Hamze	L	L	L	Haret Hreik	M	M	M	Hasbaiya El-Metn	L	L	L
Jouar El-Hoz	L	L	L	Jouret Arsoun	L	L	L	Kfar Chima	M	M	M
Kfar Selouane	ML	L	L	Khalouat Baabda	ML	L	ML	Kneisset Baabda	L	ML	L
Laylakeh	M	M	M	Louayzeh Baabda	L	ML	L	Merdache	M	M	M
Mzairaa Baabda	L	L	L	Ouadi Chahrour El Ol	ML	M	ML	Ouadi Chahrour El So	ML	M	M
Qalaa Baabda	ML	L	L	Qhrayze Baabda	ML	L	L	Qobbayaa	ML	L	ML
Qornayel	L	L	L	Qortada	ML	M	M	Qrayeh Baabda	ML	L	ML
Qsaibeh Baabda	ML	M	M	Qtale Baabda	L	L	L	Ras El Metn	ML	ML	ML
Ras El-Haref	ML	L	ML	Rouayset El-Ballout	L	L	L	Salima Baabda	L	L	L
Tahouitat El Ghadir	M	M	M	Tarchich	ML	L	L	Zandouqa	ML	M	M

Aley

Municipality	15-Jan	16-Jan	17-Jan	Municipality	15-Jan	16-Jan	17-Jan	Municipality	15-Jan	16-Jan	17-Jan
Abey	L	M	ML	Aghmid	ML	L	ML	Ain Dara	ML	L	ML
Ain Drafil	ML	M	M	Ain El Halazoun	ML	L	ML	Ain El-Rmmaneh	L	L	L
Ain Jedideh	ML	ML	ML	Ain Ksour	ML	M	ML	Ain Onoub	M	M	M
Ain Traz	L	L	L	Ainab	M	M	M	Aley	ML	ML	ML
Aramoun	M	M	M	Aytat	M	M	M	Azouniyeh	ML	L	M
Baawerta	L	M	ML	Badghan Oua Wadi Bad	ML	L	M	Bassatine	M	M	M
Bayssour	ML	M	ML	Bchamoun	M	M	M	Bdadoun	L	ML	ML
Behouara	ML	ML	ML	Bennay	L	L	L	Bhamdoun El-Dayaa	ML	ML	ML
Bhamdoun El-Mhatta	ML	ML	M	Bkhechthey	ML	ML	ML	Bleibel	M	M	M
Bmaknine	ML	ML	ML	Bmehray	ML	L	ML	Bouzrid	L	L	L
Bserrine	ML	L	ML	Bsous	L	L	L	Btalloun	ML	ML	ML
Btater	ML	ML	ML	Chanay	ML	ML	M	Charoun	ML	L	M
Chartoun	L	L	L	Chemlane	M	M	M	Choueifat El-Aamrous	M	M	M
Choueifat El-Oumara	M	M	M	Choueifat El-Quoubbe	M	M	M	Dakkoun	L	L	L
Deir Qoubel	M	M	M	Dfoun	M	M	M	Douair El Remmaneh	L	L	L
Ghaboun	L	L	L	Habramoun	L	L	L	Homs Oua Hama	ML	L	ML
Houmal	M	M	M	Jisr El Qadi	L	L	L	Kehaleh	L	L	L
Keyfoun	ML	M	M	Kfar Aamey	ML	ML	L	Kommatyeh	ML	ML	ML
Maasrati	L	L	L	Majdel Baana	ML	ML	M	Mansourieh et Ain El	ML	ML	ML
Mazraat El-Nahr	L	L	L	Mchakhte	ML	L	L	Mecherfeh	ML	ML	ML
Mejdlaya	L	L	ML	Mrayjat	ML	L	ML	Ramliyah	L	L	L
Rechmaya	L	L	L	Rejmeh	L	ML	L	Remhala	ML	M	ML
Rouayset El Neemane	ML	ML	L	Saoufar	ML	L	M	Selfaya	L	L	L
Sirhmoul	M	M	M	Souq El Ghareb	ML	ML	ML	Taazanieh	ML	ML	ML

Kesrouane

Municipality	15-Jan	16-Jan	17-Jan	Municipality	15-Jan	16-Jan	17-Jan	Municipality	15-Jan	16-Jan	17-Jan
Achkout	M	L	VL	Adma Oua Dafneh	M	M	M	Ain Ed-Delbe Kesroua	M	VL	VL
Ain El-Rihane	M	M	M	Aintoura Kesrouane	M	M	M	Ajaltoun	M	L	VL
Akaybeh Kesrouane	M	M	ML	Aramoun Kesrouane	M	L	VL	Azra ouel Ozor	M	L	L
Ballouneh	ML	L	L	Batha	M	ML	ML	Bekaatat Achkout	M	L	VL
Bekaatat Kanaan	M	VL	VL	Bizhel	M	L	L	Bouar	M	M	ML
Bqaatouta	ML	VL	VL	Bqaq Ed-Dine	M	M	ML	Bzommar	M	L	L
Chahtoul	M	L	VL	Chnaniir	M	L	L	Chouan	M	L	VL
Daraya Kesrouane	M	VL	VL	Darououn	M	M	ML	Deir Baqlouch	M	M	M
Diebta	M	L	VL	Eghbeh	M	VL	VL	Faraya	L	VL	VL
Fatka	M	L	L	Feytroun	M	VL	VL	Ghazir	M	ML	L
Ghbaleh Kesrouane	M	L	L	Ghedrass	M	L	L	Ghosta	M	L	L
Ghyneh	M	L	L	Harharaya w Kattine	M	L	VL	Harissa Kesrouane	M	M	M
Hayata	M	L	VL	Hosein	ML	L	L	Hrajel	L	VL	VL
Jdeideh Ghazir	M	L	VL	Jeita	M	M	M	Jounieh Ghadir	M	M	M
Jounieh Haret Sakhr	M	M	ML	Jounieh Salel Alma	M	M	M	Jounieh Sarba	M	M	ML
Jouret Bedrane	M	L	L	Jouret Mhad	M	L	VL	Jouret Termos	M	L	L
Kfar Debiane	ML	VL	VL	Kfar Tay Kesrouane	M	VL	VL	Kfar Yassine	M	M	ML
Kfour Kesrouane	M	L	VL	Kharayeb Nahr Ibrahi	M	L	L	Klayaat Kesrouane	M	VL	VL
Maarab	M	VL	VL	Maaysra Kesrouane	M	L	L	Mayrouba	ML	VL	VL
Mazraat Er-Ras	M	M	M	Mazraat Mrah El-Mir	M	VL	VL	Mchaa El Ftouh	M	L	L
Mchaa Faraya	ML	L	L	Mchaa Kfar Dibiane	M	L	L	Mghaer	M	VL	VL
Mradiyah	M	L	L	Nahr Ed-Dahab	M	L	VL	Nammoura Kesrouane	M	L	L
Ouata El Jaouz	M	L	VL	Ouata Sillam	M	M	ML	Raachine	M	VL	VL
Rayfoun	M	VL	VL	Safra Kesrouane	M	M	M	Shayle Kesrouane	M	ML	ML
Tabarja	M	M	M	Yahchouch	M	L	L	Zaaytreh	M	L	L
Zeytoun	M	L	L	Zouk Mikael	M	M	ML	Zouk Mosbeh	M	M	M

Baalbek_Hermel

Baalbek

Municipality	15-Jan	16-Jan	17-Jan	Municipality	15-Jan	16-Jan	17-Jan	Municipality	15-Jan	16-Jan	17-Jan
Aadous	M	ML	M	Aamchki	L	L	L	Aarsal	L	ML	L
Ain Baalbek	L	ML	L	Ain Bourday	L	L	ML	Ain El-Benye	L	L	L
Ain El-Jaouz Baalbek	L	L	L	Ain El-Siya Chadoura	L	L	L	Al Khodr Baalbek	M	L	L
Al Nabi Chit	ML	ML	L	Aynata Baalbek	M	L	L	Baalbek	L	L	ML
Bachwat	M	L	L	Barqa	M	L	L	Bednayel Baalbak	M	L	ML
Beit Chama	M	L	M	Bijjaje	M	ML	L	Bouday	M	L	ML
Brital	L	L	L	Btadi	M	L	L	Chaat	M	L	L
Chaibe	L	L	L	Chlifa	M	L	ML	Chmestar	M	L	ML
Dar El-Oussa	M	L	L	Deir El-Ahmar	M	L	L	Deir Mar Maroun Baal	M	ML	ML
Douris	ML	L	M	Fakiha	ML	ML	L	Hadath Baalbek	M	L	ML
Ham	L	L	L	Haour Taala	L	L	L	Hizzine	M	ML	M
Hlebta	M	L	ML	Hosh Barada	M	ML	M	Hosh El Dahab	M	ML	M
Hosh El Snid	ML	ML	L	Hosh El-Nabi	M	ML	L	Hosh El-Rafiq	M	ML	M
Hosh Tal Safiya	M	ML	M	Hrebta	M	L	L	laat	M	L	ML

Jebaa	M	ML	ML	Jenta	L	L	L	Kfar Dabach	M	ML	ML
Kfar Dane	M	ML	M	Khraibeh El-Hermel	M	L	L	Khreibet Baalbek	L	L	L
Kneisset Baalbek	M	L	L	Labueh	M	ML	L	Maarboun	L	L	L
Majdaloun	M	ML	M	Maqneh	M	L	L	Mazraat Beit Mcheik	M	L	M
Misraya	M	ML	M	Moqraq	M	ML	L	Nabha El-Damdoum	M	L	L
Nabi Chbay	VL	L	L	Nabi Osman	ML	M	L	Nahleh baalbek	L	L	L
Ouadi El-Oss	M	L	L	Qaa Baayoun	L	M	L	Qaa Jouar Maqiye	ML	M	ML
Qaa Ouadi El-Khanzir	ML	M	ML	Qah Baalbek	ML	M	L	Qarha Baalbek	M	L	L
Qsarnaba	M	L	M	Ram Baalbek	M	L	L	Ras Baalbek El Sahl	M	ML	ML
Ras Baalbek El-Charq	L	M	L	Riha	M	L	L	Saaide	M	ML	M
Sbouba	M	L	L	Seriine El-Tahta	ML	ML	ML	Slouqi	M	L	L
Taiba Baalbek	ML	ML	M	Talia	ML	ML	ML	Taraiya	M	L	ML
Temnin El Fawqa	M	L	M	Temnin El-Tahta	M	ML	M	Tfail	L	L	L
Yahfoufa	L	L	L	Yammouneh	M	L	L	Younine	ML	L	L
Zboud	M	ML	ML								

Hermel

Municipality	15-Jan	16-Jan	17-Jan	Municipality	15-Jan	16-Jan	17-Jan	Municipality	15-Jan	16-Jan	17-Jan
Charbine El-Hermel	M	L	L	Hermel Jbab	M	ML	L	Hermel	M	ML	ML
Maaysra El-Hermel	M	ML	M	Michaa Mrajhine	M	L	L	Ouadi Faara	M	L	ML
Ras Baalbek - Ouadi	M	M	ML	Ras Baalbek El Gharb	M	ML	ML	Zighrine	M	L	L

Akkar

Akkar

Municipality	15-Jan	16-Jan	17-Jan	Municipality	15-Jan	16-Jan	17-Jan	Municipality	15-Jan	16-Jan	17-Jan
Aain Tinta	M	M	ML	Aaiyat	M	M	ML	Aakkar El-Aatiqa	M	ML	L
Aamar Akkar	M	M	M	Aamar El Baykat	M	M	M	Aamayer	ML	ML	ML
Aamriyet Akkar	M	M	ML	Aandqet	ML	L	L	Aarmeh	M	M	M
Aarqa	M	MH	M	Aawaynat	ML	ML	ML	Aayoun Akkar	M	M	L
Abboudiye	M	M	M	Ain El-Zeit	M	M	ML	Ain Yaaqoub	M	L	L
Akroum	ML	L	L	Aridet Cheikh Zennad	M	MH	M	Baldeh w Mazraat Bal	M	M	M
Barcha	M	M	M	Bardeh	M	M	ML	Bebnine	M	M	M
Beino	M	M	ML	Beit Ayoub	M	M	L	Beit El-Haouch	M	M	M
Beit Mellat	M	M	ML	Beit Younes	M	ML	L	Berbara Akkar	M	M	ML
Berqayel	M	M	M	Bezbina	M	L	VL	Bireh Akkar	M	M	ML
Borj	M	M	ML	Bqerezla	M	M	L	Bzal	M	M	ML
Chane	M	L	L	Chaqdouf	M	M	L	Charbila	M	M	M
Cheikh Mohammad	M	M	M	Cheikh Taba Es-Sahl	M	M	M	Cheikh Taba	M	M	ML
Cheikh Zennad	M	MH	M	Cheikhlar	ML	ML	ML	Chir Hmairine	M	M	M
Daghle	M	M	ML	Dahr Laissine	M	M	M	Darine	M	M	M
Dawra	M	M	ML	Dawsa w Baghdadi	M	M	ML	Dayret Nahr El-Kabir	M	M	M
Deir Dalloum	M	M	M	Deir Jennine	M	M	ML	Denbou	M	ML	L
Dibbabiye	M	M	ML	Douair Aadwiyeh	M	M	ML	Fassikine	M	M	ML
Fnaydek	M	L	L	Fraydes Akkar	M	M	ML	Ghazayle	M	M	M
Habchit	M	L	L	Hakour	M	M	M	Halba	M	M	M

Haouchab	M	M	M	Hayssat	M	MH	M	Haytla	M	M	M
Hayzouq	M	M	M	Hedd	M	M	M	Hmaira Aakkar	M	M	M
Hmaiss Aakkar	M	M	M	Hnaider	ML	ML	M	Hokr Ed-Dahri	M	MH	M
Hokr Etti	M	M	M	Hokr Jouret Srar	M	M	M	Houaich	M	ML	L
Hrar	M	ML	L	Idbil	M	M	ML	llat	M	M	L
Janine	M	M	M	Jdeidet El-Joumeh	M	M	M	Jdeidet El-Kaiteh	M	M	M
Jebrayel	M	M	L	Kafr	M	M	L	Kafr	M	M	ML
Karm Asfour	M	M	L	Kfar Melki Aakkar	M	MH	M	Kfar Noun	M	M	ML
Kfarharra	M	M	M	Khalsa	ML	M	ML	Kharnoubet Aakkar	M	M	M
Khirbet Daoud Aakkar	M	M	ML	Khirbet El Remmane	ML	ML	ML	Khirbet Shar	M	M	ML
Khoreybet El-Jindi	M	M	M	Khreibet Aakkar	M	M	L	Kneisset Aakkar	M	MH	M
Kneisset Hnaider	ML	ML	M	Knisse	M	M	M	Kroum El-Aarab	M	M	M
Kwachra	M	M	ML	Kweykhat	M	M	M	Machta Hammoud	ML	M	ML
Majdala	M	M	M	Majdel Akkar	M	M	ML	Mar Touma	M	M	M
Marlaya Melhem	M	MH	M	Mashha	M	M	M	Massoudiye	M	MH	M
Mazraat Beit Ghattas	M	M	ML	Mazraat En-Nahriye	ML	ML	ML	Mechmech	ML	L	L
Memneh	ML	L	VL	Mhammara	M	M	M	Mighraq Aakkar	M	MH	M
Minyara	M	M	M	Moqayteh	M	MH	M	Mounjez	M	M	ML
Msalla	M	M	ML	Mzeihmeh	M	M	M	Nfaisch	M	M	M
Noura Et-Tahta	M	M	ML	Ouadi El-Haour	M	M	M	Ouadi El-Jamous	M	M	M
Ouyoun El-Ghizlane	M	M	M	Qaabarine	M	MH	M	Qabaait	M	ML	L
Qachlaq	M	M	M	Qantara Aakkar	M	M	L	Qarha Aakkar	ML	ML	M
Qarqaf	M	M	M	Qboula	M	M	L	Qleiaat Aakkar	M	MH	M
Qloud El-Baqie	M	M	M	Qobaiyat Aakkar	ML	ML	L	Qobbat Chamrat	M	MH	M
Qorayat	M	ML	L	Qornet Aakkar	M	L	VL	Qsair Aakkar	M	M	ML
Rahbe	M	ML	L	Rihaniyet Aakkar	M	M	M	Rmah	ML	M	ML
Rmoul	M	MH	M	Saadine	M	M	M	Sadaqa	M	M	L
Saidnaya	M	M	M	Sammouniye	M	MH	M	Sayssouq	M	M	ML
Semmaqiye	M	MH	M	Semmaqli	M	MH	M	Sfinet El-Dreib	M	M	M
Sfinet El-Qaitaa	M	M	ML	Sindyanet Zeidane	M	M	ML	Souaisset Aakkar	M	M	M
Srar	M	M	M	Tal Abbas El Gharby	M	M	M	Tal Abbas El-Charqy	M	M	M
Tal Biret	M	MH	M	Tal Hmayra	M	M	M	Tal Maayan Tal Kiri	M	MH	M
Tal Sibel	M	MH	M	Tallet Chattaha	M	M	ML	Tikrit	M	M	L
Tleil	M	M	M	Tshea	M	L	VL	Zawarib	M	M	ML
Zouq El Hosniyeh	M	M	M	Zouq El-Haddara	M	M	M	Zouq El-Hbalsa	M	M	M
Zouq El-Moqachrine	M	M	M								

Sud

Sour

Municipality	15-Jan	16-Jan	17-Jan	Municipality	15-Jan	16-Jan	17-Jan	Municipality	15-Jan	16-Jan	17-Jan
Aaiyeh	M	MH	M	Aalma El-Chaab	M	MH	M	Aaytit	M	M	M
Abbassiyeh Sour	M	MH	M	Abou Chech	M	H	M	Ain Abou Abdallah	M	MH	M
Ain Baal	M	MH	M	Arzoun	M	M	M	Aziyeh	M	MH	L
Baflaya	M	M	M	Barich	M	M	M	Batouliyeh	M	MH	M
Bayad	M	M	M	Bazouriyeh	M	M	M	Bediass	M	M	M

Bestiyat	M	M	M	Borj El Chemali	M	MH	M	Borj En-Naqoura	M	MH	M
Borj Rahhal	M	M	M	Boustane	M	H	M	Btaychiyeh	M	H	M
Chaaitiye	M	MH	M	Chameh	M	MH	M	Chehabiye	M	M	M
Chehour	M	M	M	Chihine	M	MH	M	Debaal Sour	M	M	M
Deir Amess	M	M	ML	Deir Kifa	M	M	M	Deir Qanoun El-Ain	M	H	M
Deir Qanoun El-Naher	M	M	M	Derdghaiya	M	M	M	Dhayra	M	H	M
Halloussiyeh	M	M	M	Hamoul	M	MH	M	Hanaouey	M	MH	M
Henniye	M	H	M	Hmairi Sour	M	M	M	Iskandarouna Sour	M	MH	ML
Jbal El Botom	M	M	ML	Jebbin	M	H	M	Jennata	M	M	M
Jijim	M	MH	M	Jouaiya	M	M	M	Kneisset Sour	M	H	M
Maarake	M	M	M	Maaroub	M	M	M	Majadel	M	M	M
Majdalzoun	M	MH	M	Mansouri Sour	M	H	ML	Marnba	M	M	M
Marouahine	M	M	M	Mazraat El-Zalloutiy	M	H	M	Mazraat Mechref	M	M	M
Mazraat Tayr Semhat	M	M	ML	Mheilib	M	MH	M	Neffakhiyeh	M	M	M
Niha Sour	M	M	M	Ouadi Jilo	M	M	M	Qana	M	MH	M
Qolaileh Sour	M	H	M	Rechknany	M	M	ML	Rmadiyah	M	MH	M
Selha Sour	M	M	M	Siddiqine	M	MH	M	Sour	M	MH	M
Srifa	M	M	M	Tayr Debbe	M	M	M	Tayr Felsay	M	M	M
Tayr Harfa	M	H	M	Touayri	M	M	M	Toura	M	M	M
Yanouh Sour	M	M	M	Yarine	M	H	M	Zebqine	M	M	ML

Saida

Municipality	15-Jan	16-Jan	17-Jan	Municipality	15-Jan	16-Jan	17-Jan	Municipality	15-Jan	16-Jan	17-Jan
Aanqoun	M	M	ML	Aaqtanit	M	M	ML	Aarab Ej-Jall	M	M	ML
Aarab Tabbaya	M	M	ML	Abra Saida	M	M	ML	Adloun	M	M	M
Adousiyeh	M	M	M	Ain-El-Deleb	M	M	ML	Arzai	M	M	M
Babliyah	M	M	M	Barty	M	ML	ML	Bissariyeh	M	M	M
Bnaafoul	M	M	ML	Bqosta	M	M	ML	Bramiy	M	M	M
Daoudiyeh	M	M	M	Dareb El-Sim	M	M	ML	Erkay	M	M	ML
Ghassanieh	M	M	M	Ghazieh	M	M	M	Hajjeh	M	M	ML
Haret Saida	M	M	ML	Hartiyeh	M	M	M	Hlaliye Saida	M	M	M
Insariyat	M	M	M	Jazira Saida	M	M	M	Kafar Bit	M	M	ML
Kaoutariyet El-Siyad	M	M	M	Kfar Chellal	M	ML	ML	Kfar Hatta Saida	M	M	ML
Kfar Milke Saida	M	ML	ML	Khartoum	M	M	M	Khaziz	M	M	ML
Khirbet Ed-Douair Sa	M	M	M	Khirbet El-Bassal	M	M	ML	Khrayeb Saida	M	M	M
Loubieh	M	M	M	Maghdouche	M	M	ML	Majdelyoun	M	M	ML
Matariyet El-Choumar	M	M	M	Matayriyeh	M	M	ML	Mazraat 'Mseileh	M	M	M
Mazraat 'Snaiber	M	M	M	Mazraat Aarab Soukka	M	M	ML	Mazraat Deir Taqla	M	M	M
Mazraat El Yahoudiye	M	M	M	Mazraat El-Housseini	M	M	M	Mazraat El-Mhaydaleh	M	M	M
Mazraat El-Ouasta	M	M	M	Mazraat Jamjim	M	M	M	Mazraat Kaoutariyet	M	M	M
Mazraat Kfar Badda	M	M	M	Mazraat Oussamiyat	M	M	M	Mazraat Sari	M	M	M
Mazraat Sinai	M	M	M	Meemariyeh	M	M	ML	Merouaniyeh	M	M	M
Miyeh ou Miyeh	M	M	ML	Najjariyeh	M	M	M	Qaaqiyat El-Snaouba	M	M	M
Qnarit	M	M	ML	Qraiye Saida	M	M	ML	Saida Ed-Dekermane	M	M	ML
Saida El-Oustani	M	M	M	Saida El-Qadimeh	M	M	ML	Saida Kefraya	M	M	M
Saksakiyeh	M	M	M	Salhieh Saida	M	M	M	Sarafand	M	M	M

Sfenta	M	ML	L	Tafahta	M	M	M	Tanbourit	M	M	ML
Tebna	M	M	M	Zaghdraiya	M	M	ML	Zeita	M	M	ML
Zrariyeh	M	M	M								

Jezzine

Municipality	15-Jan	16-Jan	17-Jan	Municipality	15-Jan	16-Jan	17-Jan	Municipality	15-Jan	16-Jan	17-Jan
Ain El-Mir (El Estab)	M	M	ML	Anane	L	L	L	Aramta	M	ML	ML
Ariya	L	L	L	Aychiyeh	M	M	M	Azour	L	L	L
Baba	L	L	L	Bayssour Jezzine	M	M	ML	Benoueteh Jezzine	L	L	L
Bhannine	L	L	L	Bisri	L	L	L	Bkassine	L	L	L
Bouslaya	M	L	L	Btedine El-Leqech	L	L	L	Chbail	M	L	L
Chouliq Jezzine	M	M	M	Dahr Ed-Deir	M	ML	L	Deir El Qattine	M	L	L
Demachqiyeh	M	M	M	Ghabbatiyeh	L	L	L	Harf Jezzine	L	L	L
Hassaniyeh	M	M	ML	Haytouleh	M	ML	L	Haytura	M	L	L
Hidab	M	ML	L	Homsiyeh	L	L	L	Jabal Toura	M	ML	L
Jarmaq	M	M	M	Jensnaya	M	M	ML	Jernaya	M	ML	ML
Jezzine	M	ML	L	Karkha	M	M	ML	Kfar Falous	ML	ML	L
Kfar Houna	M	ML	L	Kfar Jarrah	M	M	ML	Lebaa	M	M	ML
Louayzet Jezzine	M	ML	L	Machmouche	L	L	L	Mahmoudiyeh Jezzine	M	M	M
Maknounye Jezzine	M	L	L	Maraat Ouazaiyeh	M	M	ML	Mazraat Daraya	M	L	L
Mazraat El-Aarqoub	M	M	M	Mazraat El-Mathane	L	L	L	Mazraat El-Rahbane	M	L	L
Mazraat Khallet Khaz	M	ML	ML	Mazraat Louzid (Loua	M	ML	L	Mazraat Qrouh	M	M	ML
Mazraat Tamra	M	M	M	Mazraat Zighrine Jez	M	M	M	Mazraat	M	L	L
Mharbiyeh	M	M	ML	Midane Jezzine	L	L	L	Mjeydel Jezzine	M	M	ML
Mlikh	M	ML	L	Mrah El-Hbasse	M	M	ML	Ouadi Baanqoudaine	M	M	ML
Ouadi El-Laymoun	M	ML	ML	Ouardiyeh	M	L	L	Qabaa Jezzine	M	ML	L
Qatrani	M	ML	L	Qaytouleh	M	ML	L	Qtaleh Jezzine	L	L	L
Rihane Jezzine	M	M	M	Rimat	M	ML	L	Roum	ML	L	L
Roummanet	M	M	L	Sabbah	L	L	L	Saydoun	M	L	L
Sfaray	L	L	L	Snaya	M	L	L	Sojoud	M	M	M
Srayri	M	ML	ML	Taaid	L	L	L	Wadi Jezzine	L	L	L
Zhalta	M	L	L								

Bekaa

West Bekaa

Municipality	15-Jan	16-Jan	17-Jan	Municipality	15-Jan	16-Jan	17-Jan	Municipality	15-Jan	16-Jan	17-Jan
Aammiq BG	ML	ML	M	Ain El Tineh BG	M	ML	L	Ain Zebdeh	L	ML	ML
Ana	ML	L	ML	Aytanit	L	L	L	Baaloul BG	L	ML	ML
Bab Mareh	ML	ML	ML	Chouberqiye Aammiq	ML	ML	M	Dakoue	ML	ML	ML
Deir Ain El-Jaouze	ML	L	ML	Deir Tahniche	ML	L	M	Ghaza	ML	ML	M
Harime El-Soughra	L	ML	ML	Hoch Harimeh	ML	ML	M	Jazira BG	ML	ML	M
Jib Jennine	L	ML	ML	Kamed-El-Laouz	L	M	ML	Kefraya BG	L	L	L
Khiara El Atika	ML	ML	M	Khiara	ML	ML	M	Khirbet Qanafar	L	L	ML
Lala	L	ML	ML	Lebbaya BG	ML	ML	ML	Loussa	M	ML	L
Machghara	ML	ML	L	Manara (Hammara) BG	L	L	L	Mansoura BG	ML	ML	M

Marej BG	ML	ML	M	Maydoun	M	ML	L	Ouaqf BG	ML	ML	M
Qaraaoun	ML	ML	ML	Qelya	M	ML	L	Raouda (Istabel)	L	ML	M
Saghbine	L	L	L	Sohmor	ML	ML	ML	Soltan Yacoub el Ara	ML	ML	ML
Souairy	L	ML	ML	Sultan Yaacoub	ML	ML	M	Tal Znoub	ML	ML	M
Yehmor BG	ML	ML	ML	Zilaya	ML	L	L				

Zahle

Municipality	15-Jan	16-Jan	17-Jan	Municipality	15-Jan	16-Jan	17-Jan	Municipality	15-Jan	16-Jan	17-Jan
Aanjar (Haouch Mouss)	L	ML	ML	Ablah	M	L	M	Ain Kfarzabad	L	L	L
Ali-El-Nahri	M	ML	M	Bar Elias	ML	ML	M	Bouarej	M	ML	ML
Cheberqiyet Tabet	ML	ML	M	Chtaura	M	ML	ML	Deir El Ghazal	L	L	L
Delhamiyet Zahle	ML	ML	ML	Ferzol	M	L	ML	Haouch El-Ghanam	M	ML	M
Haouch Es-Siyadeh	M	ML	ML	Haouch Hala	ML	ML	ML	Haouch Mandara	M	ML	ML
Haouch Qayssar	M	ML	ML	Hezerta	M	L	ML	Hosh Moussa	L	ML	L
Jdita	M	L	ML	Kfarzabad	L	ML	L	Ksara	ML	ML	M
Majdel Aanjar	L	ML	ML	Makssi	M	ML	ML	Massa	ML	L	L
Mazraat Er-Remtaniye	M	L	ML	Mrayjat Zahle	M	ML	ML	Mzaraa Zahle	M	ML	ML
Nabi Ayla	M	L	M	Nasriyet Rizk	ML	ML	L	Nasriyet Zahle	M	ML	ML
Niha Zahle	M	L	M	Ouadi Ed-Deloum	M	ML	ML	Ouadi El-Arayech	M	L	ML
Qaa El Rim	M	L	ML	Qab Elias	M	L	M	Qousaya	L	L	L
Rhit	L	L	L	Riyak	M	ML	ML	Saadnayel	ML	ML	M
Taal El-Akhdar	ML	ML	M	Taalbeya	M	ML	M	Taanayel	ML	ML	M
Talamara	M	ML	M	Tcheflik Edde Haouch	M	ML	ML	Tcheflik Qiqano	M	ML	ML
Terbol Zahle	L	ML	L	Touaite Zahle	M	L	ML	Zahle Aradi	M	L	M
Zahle El-Berbara	M	VL	ML	Zahle El-Maallaqa	M	L	M	Zahle El-Midane	M	L	M
Zahle Er-Rassiyeh	M	L	ML	Zahle Haouch El-Ouma	ML	ML	M	Zahle Haouch El-Ouma	M	ML	M
Zahle Haouch Ez-Zara	M	L	M	Zahle Maallaqa Aradi	M	L	M	Zahle Mar Antonios	M	VL	ML
Zahle Mar Elias	M	ML	M	Zahle Mar Gerios	M	L	M	Zahle Saydet En-Naja	M	L	M
Zebdoul	ML	L	ML								

Rachaiya

Municipality	15-Jan	16-Jan	17-Jan	Municipality	15-Jan	16-Jan	17-Jan	Municipality	15-Jan	16-Jan	17-Jan
Ain Arab Rachaiya	L	M	L	Ain Ata	L	L	L	Ain Harche	L	ML	L
Aqabe Rachaya	L	ML	L	Ayha	ML	ML	ML	Ayta El Fokhar	L	M	ML
Bakifa Rachaya	L	ML	L	Bakka	L	M	ML	Beit Lahya	L	ML	L
Bireh Rachaiya	L	M	ML	Daher El Ahmar	L	M	L	Deir El-Achayer	L	L	L
Heloua Rachaiya	L	L	L	Hoch El Qannabeh Rac	L	L	L	Kaoukaba Bou Arab	L	M	L
Kfar Danis	L	M	ML	Kfar Mechki	L	ML	L	Kfar Qouq	L	M	L
Kherbet Rouha	L	M	ML	Majdel Balhiss	ML	ML	ML	Mdoukha	L	M	ML
Mhaydseh Rachaiya	L	M	ML	Nabi Safa	ML	L	L	Rachaiya	L	ML	L
Rafid Rachaiya	L	M	ML	Selsata (Mazraat Dei	L	L	L	Tannoura	L	ML	L
Yanta	L	M	L								

Beyrouth

Beyrouth

Municipality	15-Jan	16-Jan	17-Jan	Municipality	15-Jan	16-Jan	17-Jan	Municipality	15-Jan	16-Jan	17-Jan
--------------	--------	--------	--------	--------------	--------	--------	--------	--------------	--------	--------	--------

Achrafieh	M	M	M	Ain el-Mreisse	M	M	M	Bachoura	M	M	M
Beirut Central Distr	M	M	M	Marfai	M	M	M	Mazraa	M	M	M
Medaouar	M	M	M	Minet el-Hosn	M	M	M	Mwssaitbeh	M	M	M
Ras Beirut	M	M	M	Rmeil	M	M	M	Saifi	M	M	M
Zqaq el-Blat	M	M	M								