

Lebanon Fire Risk Bulletin



CIVIL DEDEFENCE

Refer to cadast table condition.

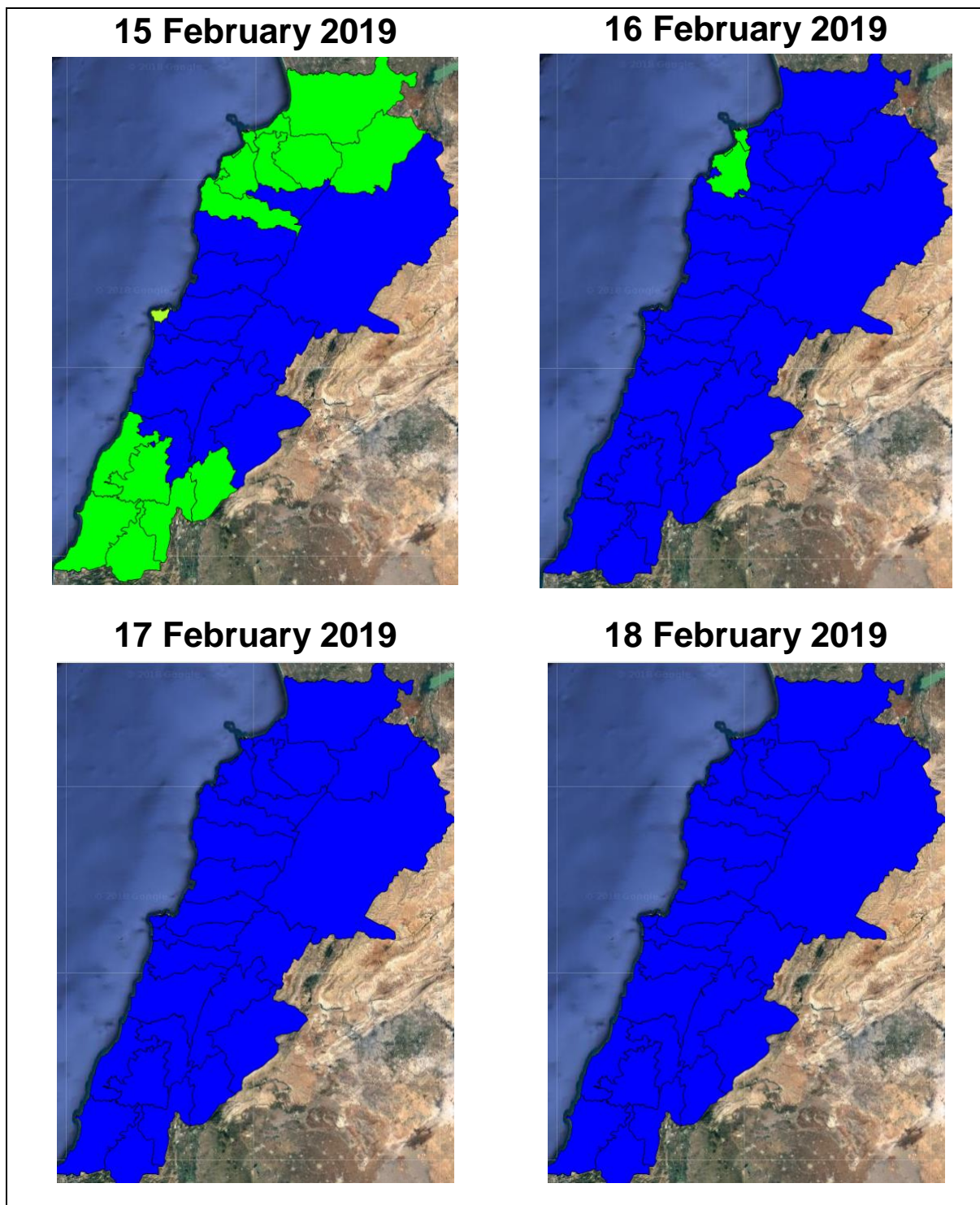
Please note that the indicated temperature is at 2 meters height from the ground.

General description of potential fire risk situation

Symbol	Level of risk	Meaning and actions
VL	Very low	Very low fire risk. Controlled burning operations can be hardly executed due to high fuel moisture content. Normally wildfires self-extinguish.
L	Low	Low fire risk. Controlled burning operations can be executed with a reasonable degree of safety.
ML	Medium low	Medium-low fire risk. Controlled burning operations can be executed in safety conditions. All the fires need to be extinguished.
M	Medium	Medium fire risk. Controlled burning operations would be avoided. All the fires need to be very well extinguished.
MH	Medium high	Controlled burning is not recommended. Open flame will start fires. Cured grasslands and forest litter will burn readily. Spread is moderate in forests and fast in exposed areas. Patrolling and monitoring is suggested. Fight fires with direct attack and all available resources.
H	High	Ignition can occur easily with fast spread in grass, shrubs and forests. Fires will be very hot with crowning and short to medium spotting. Direct attack on the head may not be possible requiring indirect methods on flanks. Patrolling and monitoring the territory is highly suggested.
E	Extreme	Ignition can occur also from sparks. Fires will be extremely hot with fast rate of spread. Control may not be possible during day due to long range spotting and crowning. Suppression forces should limit efforts to limiting lateral spread. Damage potential total. Patrolling and monitoring the territory is highly suggested.

Beirut, 16 February 2019

FIRE RISK INDEX

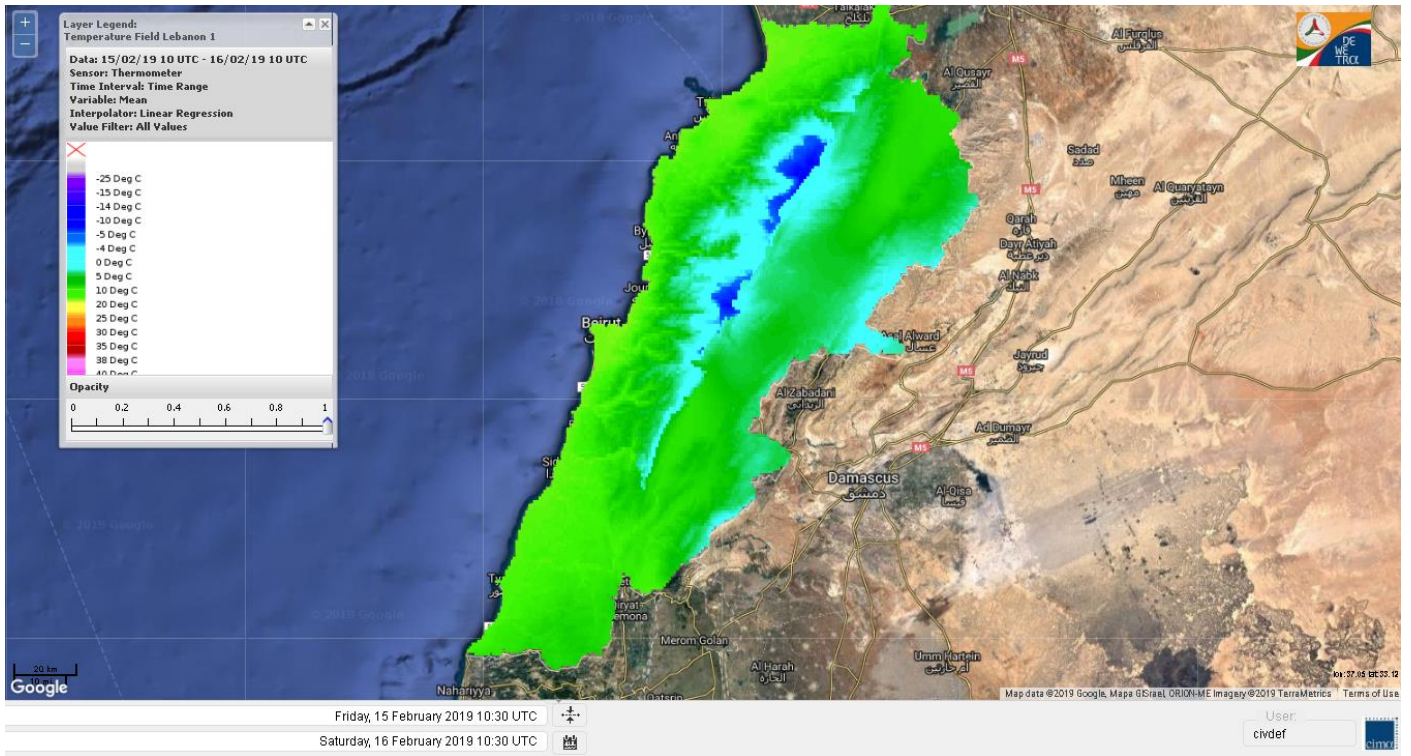


Layer Legend:
Lebanon Wildfire Risk Index 1

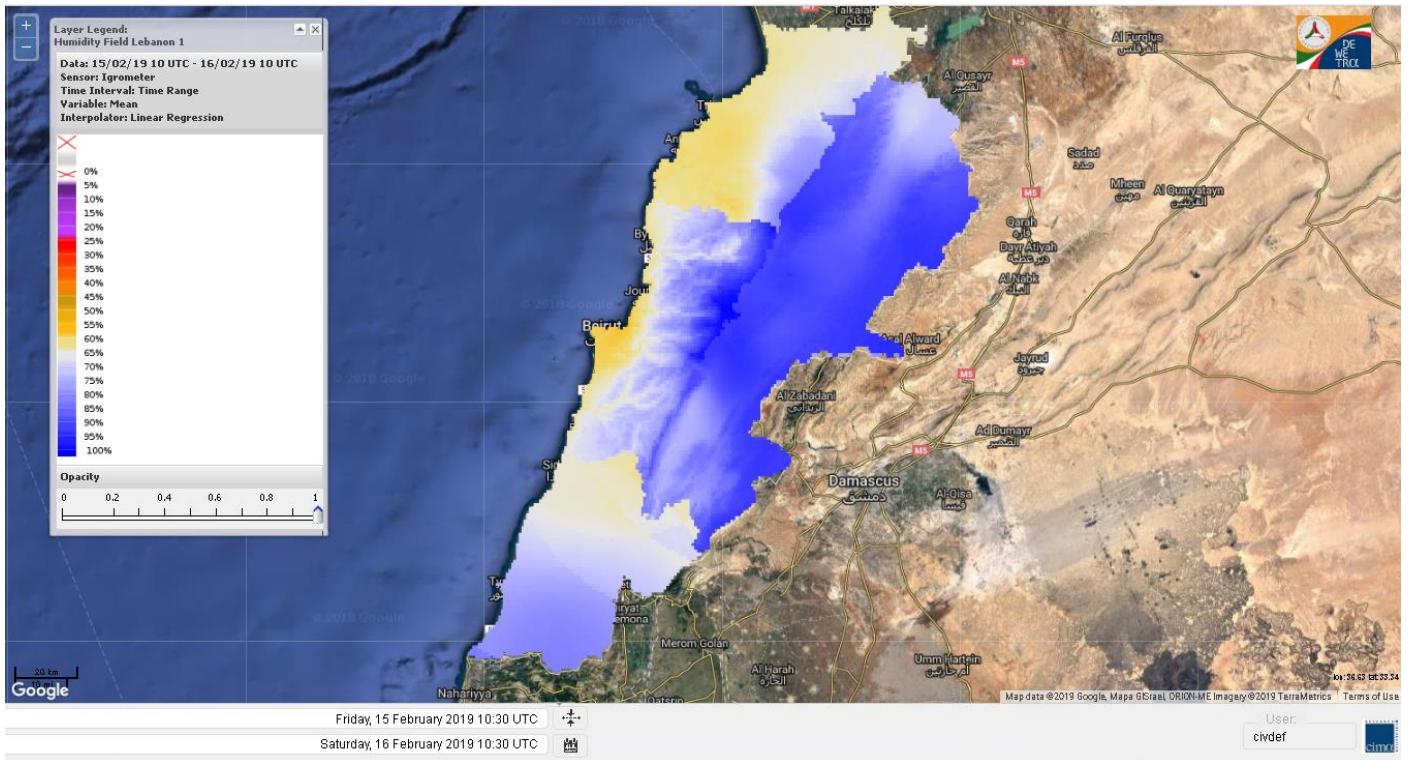
Data: Run: 16/02/2019 00:00. Forecast for 16
Model: RISICO for the Republic of Lebanon
Variable: Fire Weather Index
Spatial Resolution: Caza

- VERY LOW
- LOW
- MEDIUM-LOW
- MEDIUM
- MEDIUM-HIGH
- HIGH
- EXTREME

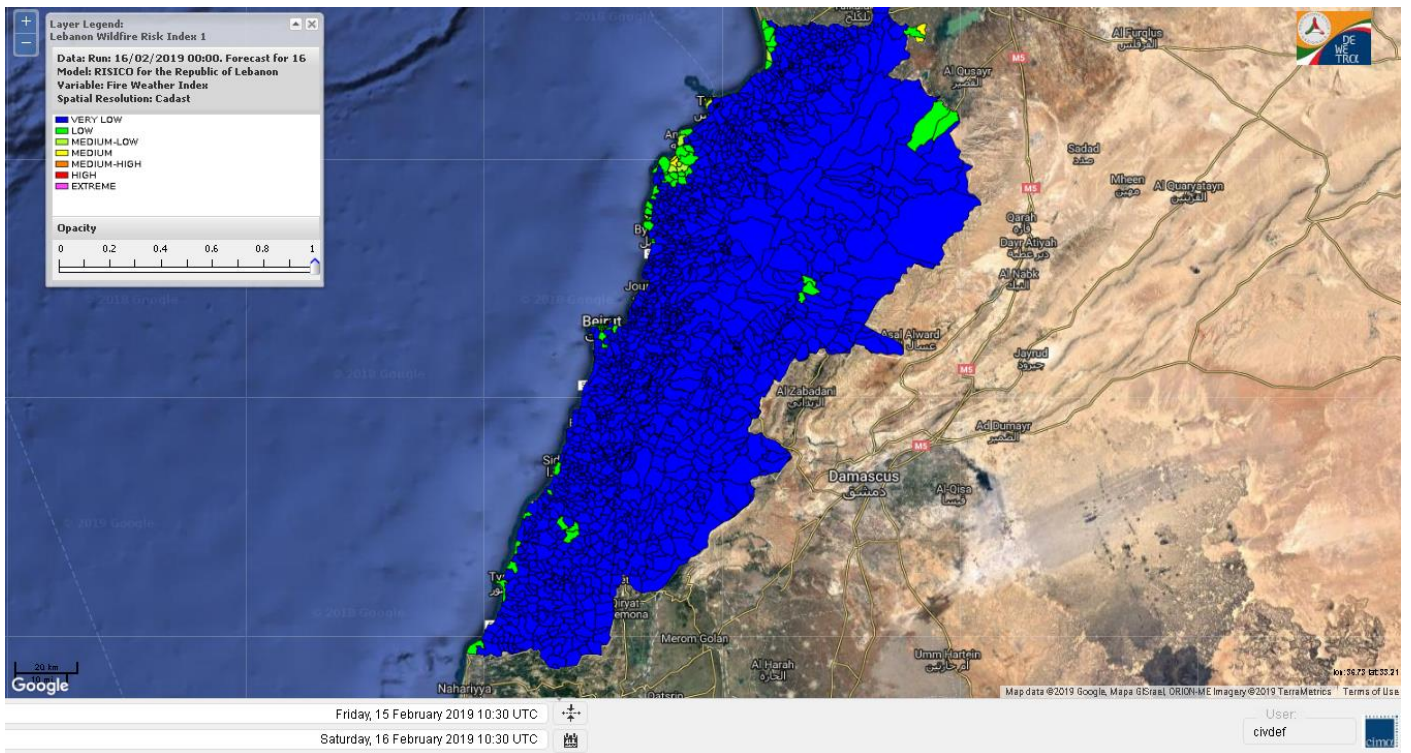
Lebanon temperature for 16 February 2019



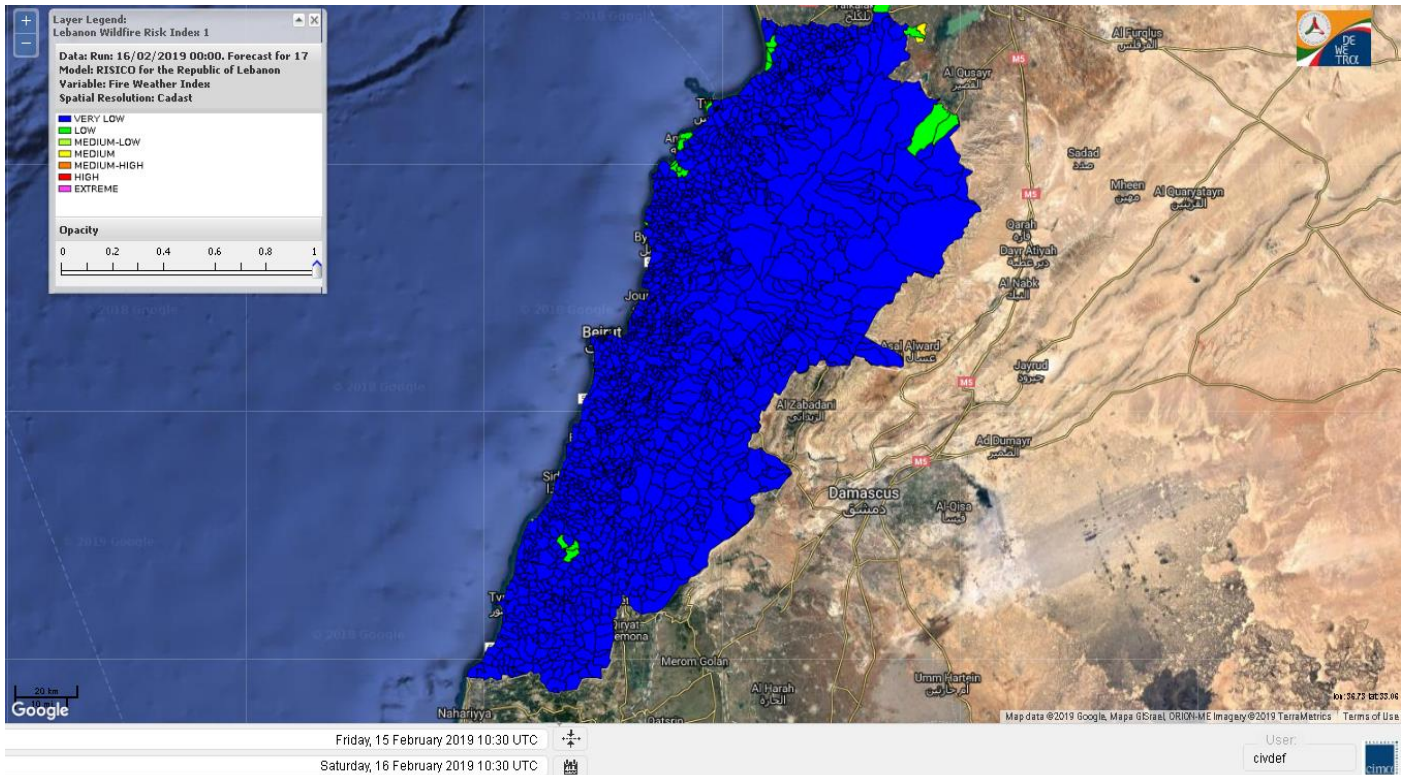
Lebanon humidity for 16 February 2019



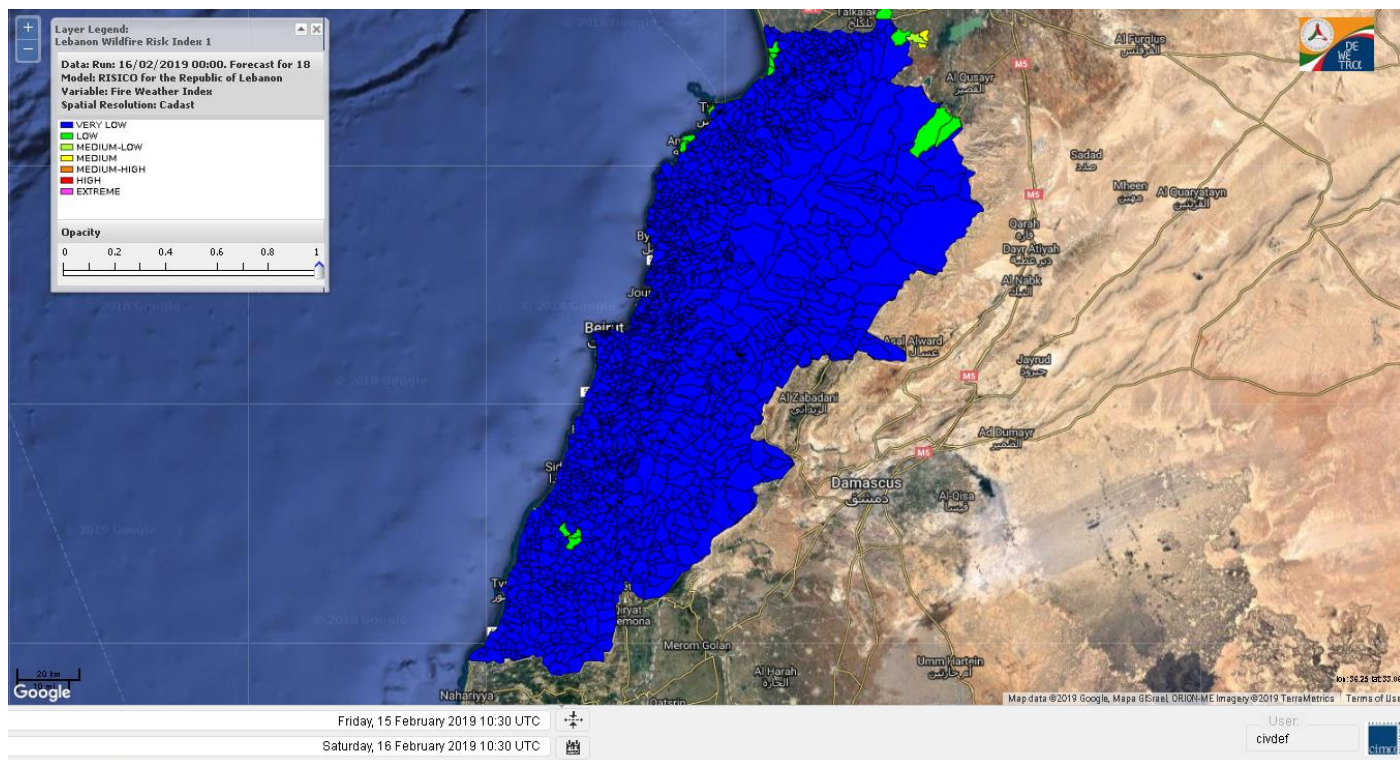
Lebanon for 16 February 2019



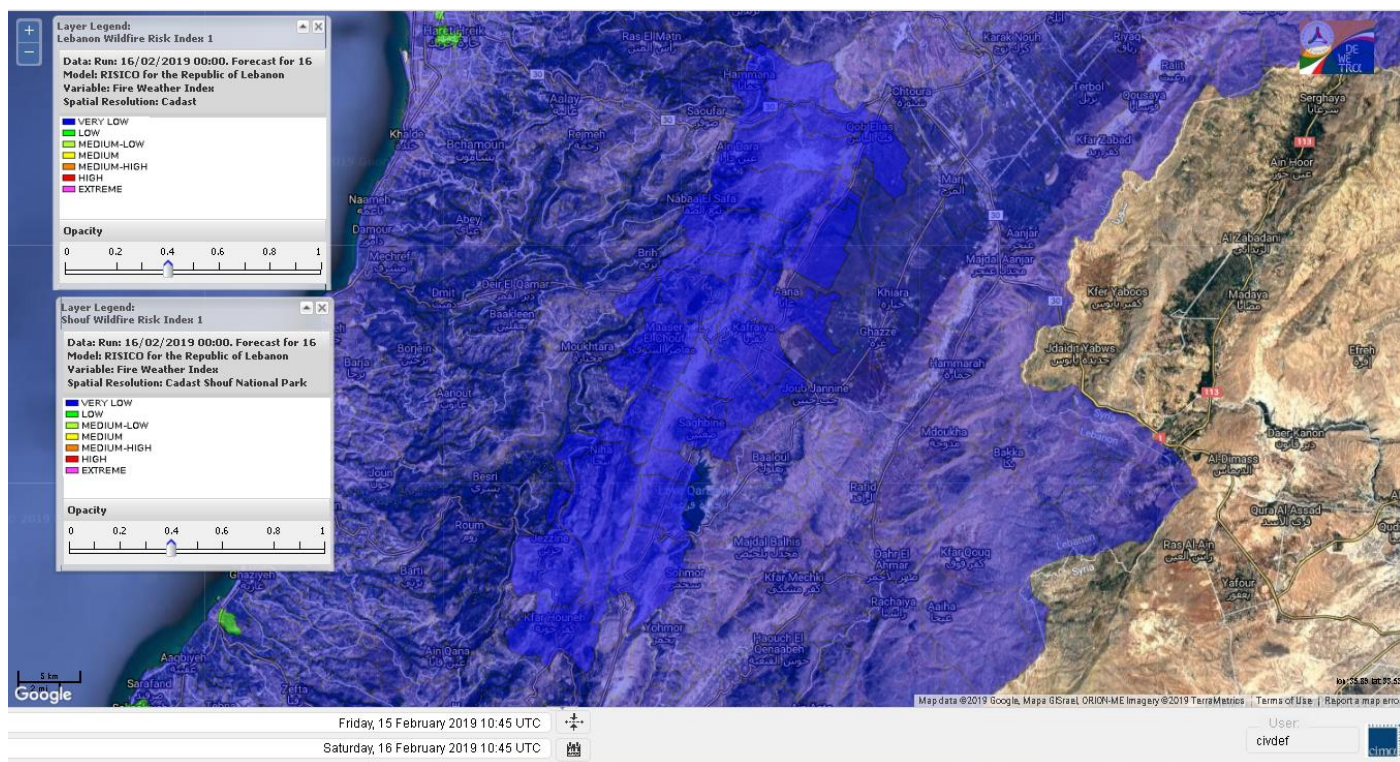
Lebanon for 17 February 2019



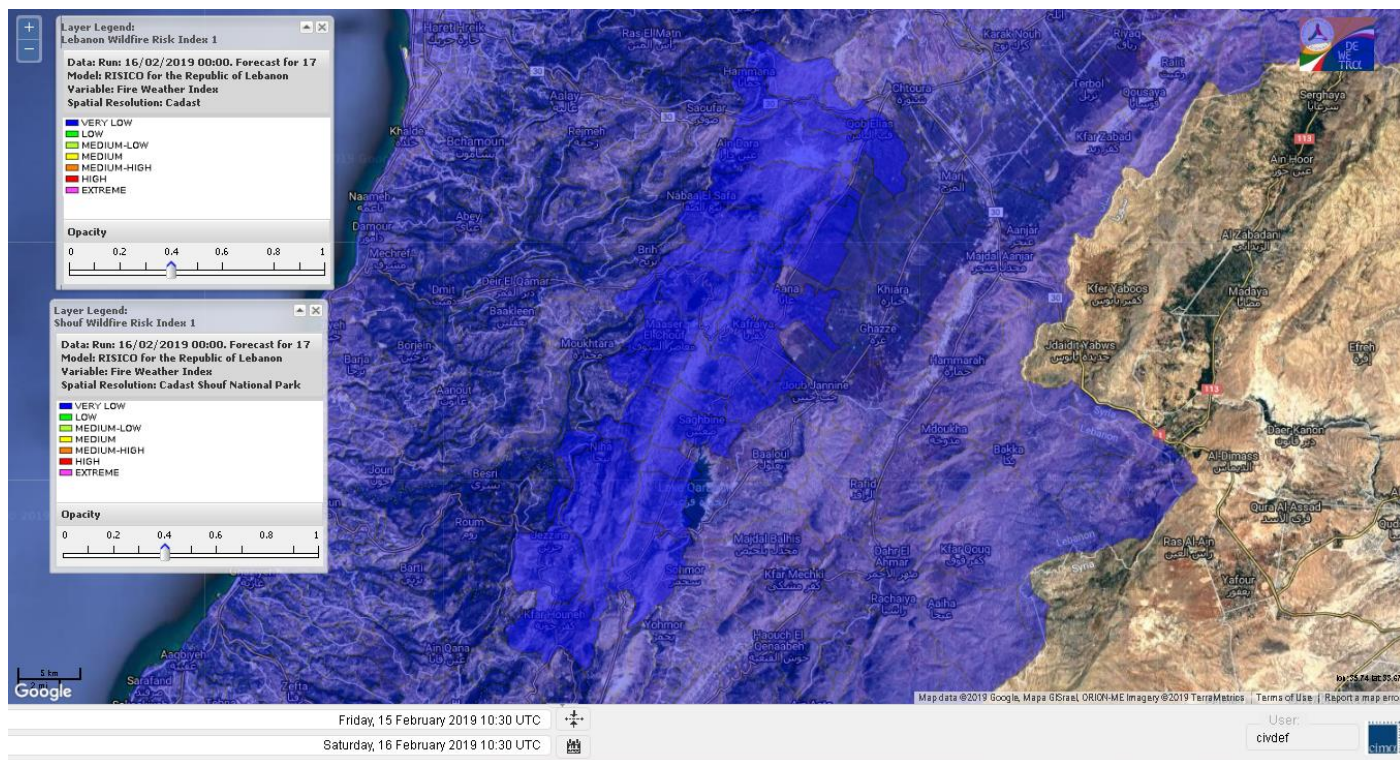
Lebanon for 18 February 2019



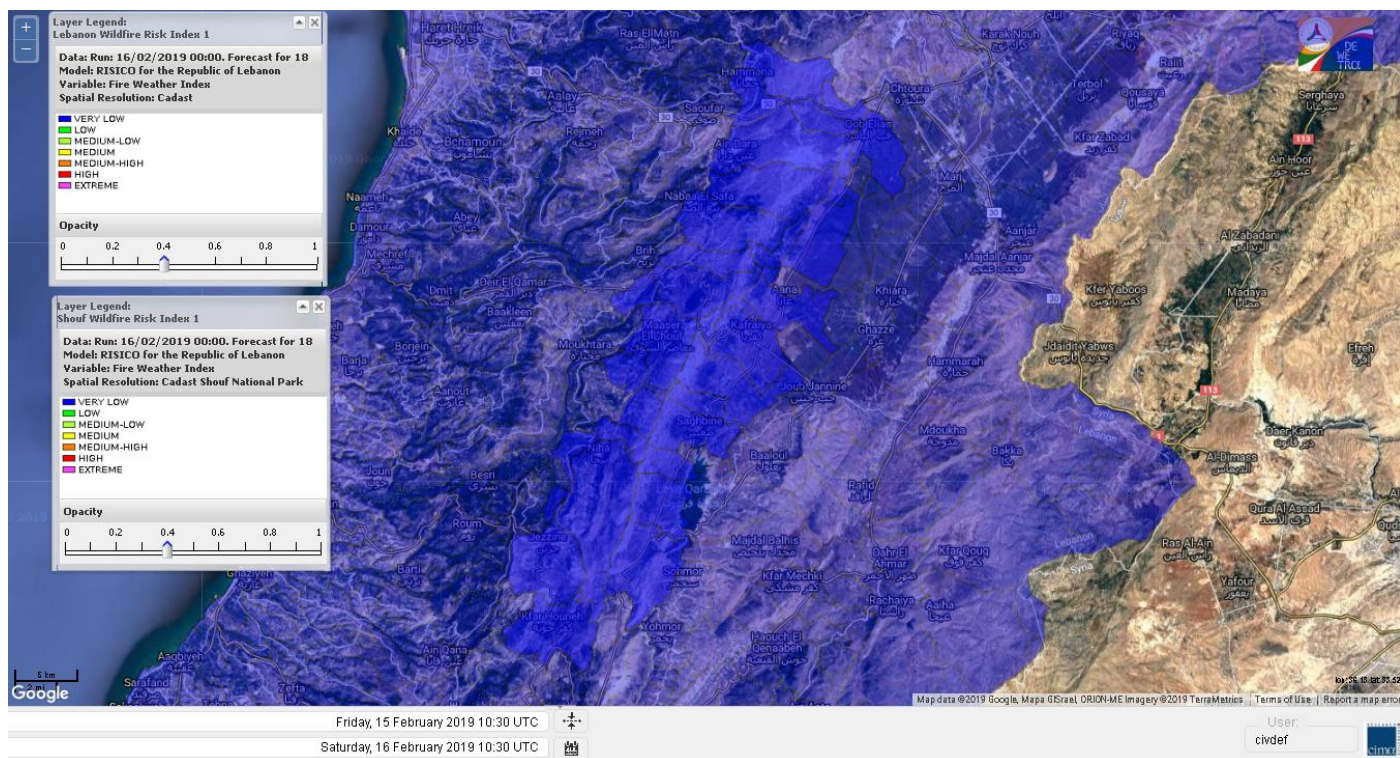
Shouf Biosphere Reserve Forecast for 16 February 2019



Shouf Biosphere Reserve Forecast for 17 February 2019



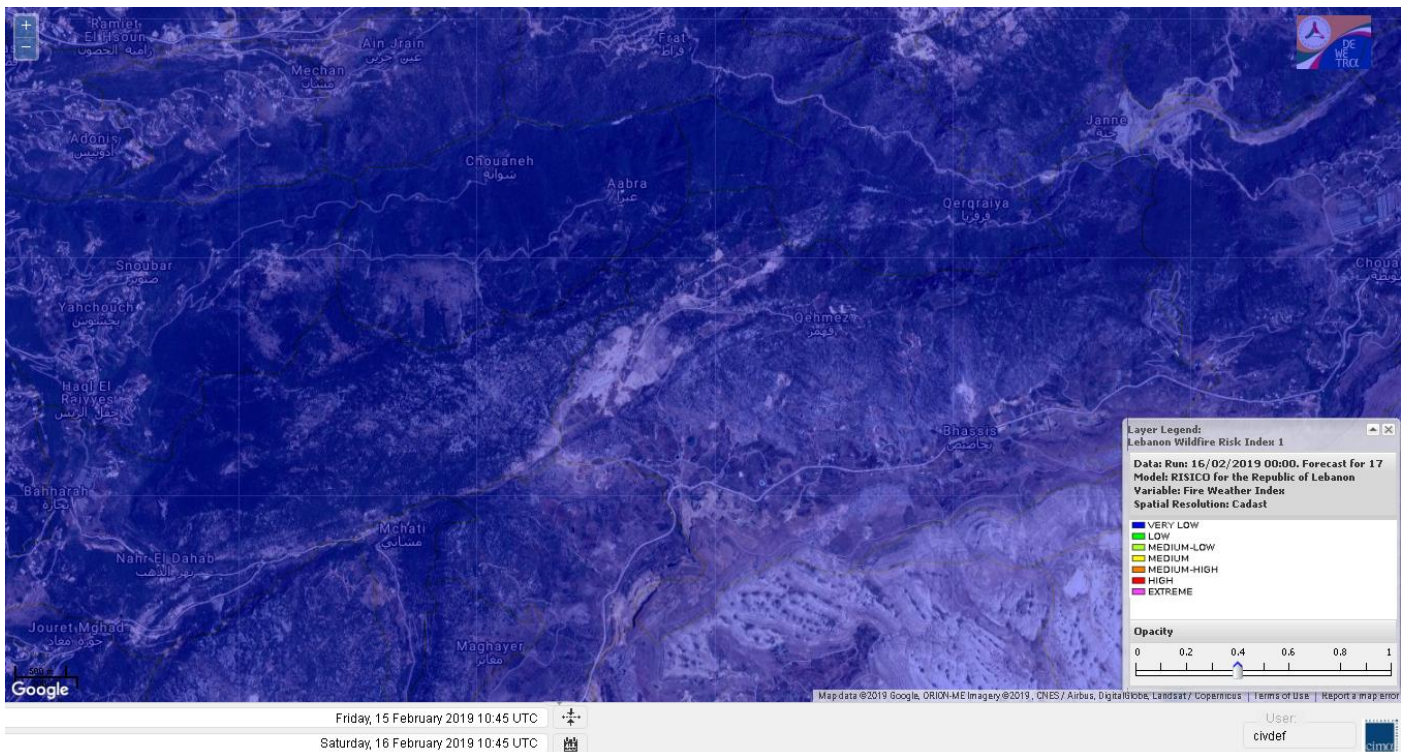
Shouf Biosphere Reserve Forecast for 18 February 2019



Jabal Moussa Reserve Forecast for 16 February 2019



Jabal Moussa Reserve Forecast for 17 February 2019



Jabal Moussa Reserve Forecast for 18 February 2019



Weather Beirut

Beyrouth, Lebanon, 33.89°N 35.5°E 40m asl

Forecast	Sat Today	Sun Tomorrow	Mon 2-18	Tue 2-19	Wed 2-20	Thu 2-21	Fri 2-22
7-day weather							
14-day weather							
Current weather	15 °C	14 °C	14 °C	15 °C	15 °C	15 °C	16 °C
Webcams	12 °C	10 °C	9 °C	9 °C	11 °C	11 °C	10 °C
Meteograms	↑ 20 km/h 10-20mm	↑ 15 km/h 0-5mm	↘ 10 km/h 0-2mm	↘ 12 km/h -	↘ 13 km/h 0-2mm	↘ 10 km/h -	↘ 13 km/h 0-2mm
Multimodel	☀️ 0h	☀️ 2h	☀️ 5h	☀️ 7h	☀️ 8h	☀️ 3h	☀️ 8h
Detail							
Weather maps							
Weather maps (New)							
Special							
Archive / Climate							
history+							
Products							
Widget							

The reliability of this forecast is **medium**. We recommend a look at the [multimodel](#).

Saturday	05 ⁰⁰	08 ⁰⁰	11 ⁰⁰	14 ⁰⁰	17 ⁰⁰	20 ⁰⁰	23 ⁰⁰
Temperature (°C)	12°	15°	14°	13°	13°	12°	12°
Temperature felt (°C)	8°	11°	10°	9°	10°	9°	9°
Wind direction	↗ SSW	↗ SSW	↗ SSW	↗ SSW	↗ SSW	↑ S	↘ SSE
Wind speed (km/h)	18-25	18-25	19-27	18-25	15-19	13-15	13-16
Precipitation (mm/3h)	1	4	2	5	5	-	-
Precipitation probability	80%	80%	100%	100%	80%	50%	40%

Nord

Koura

Municipality	16-Feb	17-Feb	18-Feb	Municipality	16-Feb	17-Feb	18-Feb	Municipality	16-Feb	17-Feb	18-Feb
Aaba	VL	VL	VL	Afsaddiq	VL	VL	VL	Ain Ekrine	VL	VL	VL
Amioun	VL	VL	VL	Anfeh	ML	L	L	Badbhoun	L	VL	VL
Barghoun	VL	VL	VL	Barsa	VL	VL	VL	Batroumine	VL	VL	VL
Bdebba	VL	VL	VL	Bechmizine	VL	VL	VL	Bednaye El-Koura	ML	L	VL
Bhabbouch El-Koura	VL	VL	VL	Bkeftine	VL	VL	VL	Bnehran	VL	VL	VL
Bqaiia El-Koura	VL	VL	VL	Bsarma	VL	VL	VL	Btaaboura	L	VL	VL
Bterram	VL	VL	VL	Btouratij	VL	VL	VL	Bziza	VL	VL	VL
Dar Beechtar	VL	VL	VL	Dar Chmezzine	VL	VL	VL	Deddeh	VL	VL	VL
Deir El-Balamand	VL	VL	VL	Fih	VL	VL	VL	Hraiche	L	L	L
Ijdaabrine	L	VL	VL	Kaftoun	VL	VL	VL	Kefraya El-Koura	M	L	VL
Kfarakka	VL	VL	VL	Kfarhata	ML	L	VL	Kfarhazir	L	VL	VL
Kfarkahel	VL	VL	VL	Kfarsaroun	VL	VL	VL	Kosba	VL	VL	VL
Mejdel el-Koura	VL	VL	VL	Nakhle	VL	VL	VL	Qalhat	VL	VL	VL
Ras Masqa	VL	VL	VL	Rechdibbine	VL	VL	VL	Zakroun	VL	VL	VL
Zgharta El-Mtaouile	VL	VL	VL								

Bcharre

Municipality	16-Feb	17-Feb	18-Feb	Municipality	16-Feb	17-Feb	18-Feb	Municipality	16-Feb	17-Feb	18-Feb
Aabdine	VL	VL	VL	Bane	VL	VL	VL	Barhelioun	VL	VL	VL
Bazooune	VL	VL	VL	Becharre	VL	VL	VL	Beit Menzer	VL	VL	VL
Billa	VL	VL	VL	Blaouza	VL	VL	VL	Bqaa Kafra	VL	VL	VL
Bqerqacha	VL	VL	VL	Breissat	VL	VL	VL	Dimane	VL	VL	VL
Hadath El Jobbeh	VL	VL	VL	Hadchit	VL	VL	VL	Hasroun	VL	VL	VL
Mazraat Aassaf	VL	VL	VL	Mazraat Bani Saab	VL	VL	VL	Mchaa El-Jobbeh	VL	VL	VL
Metrit	VL	VL	VL	Moghr El-Ahoual	VL	VL	VL	Ouadi Qannoubine	VL	VL	VL
Qanat	VL	VL	VL	Qnayer	VL	VL	VL	Tourza	VL	VL	VL

Batroun

Municipality	16-Feb	17-Feb	18-Feb	Municipality	16-Feb	17-Feb	18-Feb	Municipality	16-Feb	17-Feb	18-Feb
Aabrine	L	VL	VL	Aalali	VL	VL	VL	Aartiz	VL	VL	VL
Abdelli	VL	VL	VL	Ajdabra	VL	VL	VL	Assia	VL	VL	VL
Basbina	VL	VL	VL	Batroun	VL	VL	VL	Bcheleh	VL	VL	VL
Bechtoudar	VL	VL	VL	Beit Chlala	VL	VL	VL	Beit Kassab	VL	VL	VL
Bijdarfil	L	VL	VL	Bqesmaya	VL	VL	VL	Chatine	VL	VL	VL
Chebtin	VL	VL	VL	Chekka	L	VL	VL	Daael	VL	VL	VL
Dahr Abi Yaghi	VL	VL	VL	Daraya El-Batroun	VL	VL	VL	Deir Billa	VL	VL	VL
Deir Kfifane	VL	VL	VL	Deir Mar Youhanna EL	VL	VL	VL	Deir Mar Youssef Jra	VL	VL	VL
Douma	VL	VL	VL	Douq	VL	VL	VL	Eddeh El-Batroun	VL	VL	VL
Ftihat El-Batroun	VL	VL	VL	Ghouma	VL	VL	VL	Hadtoun	VL	VL	VL
Hamat	L	VL	VL	Harbouna	VL	VL	VL	Hardine	VL	VL	VL
Helta	VL	VL	VL	Hery	M	L	VL	Jebbla	VL	VL	VL
Jrabta El-Batroun	VL	VL	VL	Jrane El-Batroun	VL	VL	VL	Kfar Aabida	L	VL	VL
Kfar Halda	VL	VL	VL	Kfarb Shlaimane	VL	VL	VL	Kfarhatna	VL	VL	VL
Kfarhay	L	VL	VL	Kfarhelos	VL	VL	VL	Kfifane	VL	VL	VL

Kfour El Arabi	VL	VL	VL	Koubba	VL	VL	VL	Kour	VL	VL	VL
Mar Mama	VL	VL	VL	Masrah	VL	VL	VL	Mehmarch	VL	VL	VL
Mrah Chdid	VL	VL	VL	Mrah El Ziyat	VL	VL	VL	Mrah El-Hajj	VL	VL	VL
Nahle El-Batroun	VL	VL	VL	Niha El-Batroun	VL	VL	VL	Ouajh El-Hajjar	VL	VL	VL
Ouata Houb	VL	VL	VL	Qatnaaoun	L	VL	VL	Racha	VL	VL	VL
Rachana	VL	VL	VL	Rachkida	L	VL	VL	Ram El-Batroun	VL	VL	VL
Ras Nahhach	ML	VL	VL	Selaata	L	VL	VL	Sghar	VL	VL	VL
Smar Jbayl	VL	VL	VL	Sourat El-Batroun	VL	VL	VL	Tannourine El-Faouqa	VL	VL	VL
Tannourine Et-Tahta	VL	VL	VL	Thoum	L	VL	VL	Toula El-Batroun	VL	VL	VL
Zan	VL	VL	VL								

Zgharta

Municipality	16-Feb	17-Feb	18-Feb	Municipality	16-Feb	17-Feb	18-Feb	Municipality	16-Feb	17-Feb	18-Feb
Aachach	VL	VL	VL	Aalma	VL	VL	VL	Aarde	VL	VL	VL
Aintourine	VL	VL	VL	Arabet Qozhaya	VL	VL	VL	Arde	VL	VL	VL
Arjis	VL	VL	VL	Asnoun	VL	VL	VL	Ayto	VL	VL	VL
Basloukit	VL	VL	VL	Bchannine	VL	VL	VL	Besebeel	VL	VL	VL
Bhairret Toula	VL	VL	VL	Bnachee	VL	VL	VL	Boussit	VL	VL	VL
Danha	VL	VL	VL	Daraiya Zgharta	VL	VL	VL	Deir Jdeide	VL	VL	VL
Ehden	VL	VL	VL	Halan	VL	VL	VL	Hariq Zgharta	VL	VL	VL
Houakir	VL	VL	VL	Hraiqis	VL	VL	VL	laal	VL	VL	VL
Ijbaa	VL	VL	VL	Karm Saddeh	VL	VL	VL	Kfarchakhna	VL	VL	VL
Kfardlaqous	VL	VL	VL	Kfarfou	VL	VL	VL	Kfarhata Zgharta	VL	VL	VL
Kfarhoura	VL	VL	VL	Kfarsghab	VL	VL	VL	Kfaryachit	VL	VL	VL
Kfarzaina	VL	VL	VL	Khaldiye	VL	VL	VL	Mazraat Ajbeaa	VL	VL	VL
Mazraat Et-Teffah	VL	VL	VL	Mazraat Jneid	VL	VL	VL	Mejdlaiya Zgharta	VL	VL	VL
Merh Kfarsghab	VL	VL	VL	Miryata	VL	VL	VL	Miziara	VL	VL	VL
Mzraat Kefraya	VL	VL	VL	Qorah Bach	VL	VL	VL	Rachiine	VL	VL	VL
Ras Kifa	VL	VL	VL	Sakhra	VL	VL	VL	Sebhel Zgharta	VL	VL	VL
Serhel	VL	VL	VL	Tallet Zgharta	VL	VL	VL	Toula Zgharta	VL	VL	VL
Zgharta	VL	VL	VL								

Minieh-Denniye

Municipality	16-Feb	17-Feb	18-Feb	Municipality	16-Feb	17-Feb	18-Feb	Municipality	16-Feb	17-Feb	18-Feb
Aasaymout	VL	VL	VL	Aaymar	VL	VL	VL	Aazki	VL	VL	VL
Ain El-Tineh-Miniyeh	VL	VL	VL	Assoun	VL	VL	VL	Bakhaaoun	VL	VL	VL
Bchennata	VL	VL	VL	Bechehhara	VL	VL	VL	Beddawi	VL	VL	VL
Behouaita	VL	VL	VL	Beit El Foqss	VL	VL	VL	Beit Haouik	VL	VL	VL
Beit Zoud	VL	VL	VL	Bekaasafrine	VL	VL	VL	Borj El Yahoudiyeh	VL	VL	VL
Bqarsouna	VL	VL	VL	Btermaz	VL	VL	VL	Debaael	VL	VL	VL
Deir Ammar	VL	VL	VL	Deir Nbouh	VL	VL	VL	Haouaret-Miniyeh	VL	VL	VL
Haql el Azimeh	VL	VL	VL	Harf El Siyad	VL	VL	VL	Hazmiye-Miniyeh	VL	VL	VL
Izal	VL	VL	VL	Jarjour	VL	VL	VL	Jayroun	VL	VL	VL
Kahf El-Malloul	VL	VL	VL	Karm El-Moher	VL	VL	VL	Kfar Binine	VL	VL	VL
Kfarchalane	VL	VL	VL	Kfarhabou	VL	VL	VL	Kharroub-Miniyeh	VL	VL	VL
Mazraat El-Kreme	VL	VL	VL	Mazraat Ketrane	VL	VL	VL	Merkebta	VL	VL	VL
Minyeh	VL	VL	VL	Mrah El Sfirat	VL	VL	VL	Mrah Sraj	VL	VL	VL
Mrebbine	VL	VL	VL	Nabi Youcheaa	VL	VL	VL	Nemrine	VL	VL	VL

Qarhaiya	VL	VL	VL	Qarne	VL	VL	VL	Qarsita	VL	VL	VL
Qattineh-Miniyeh	VL	VL	VL	Qemmamine	VL	VL	VL	Qraine	VL	VL	VL
Raouda-Aadoua	VL	VL	VL	Rihaniyet-Miniyeh	VL	VL	VL	Sfireh	VL	VL	VL
Sir Ed-Danniyeh	VL	VL	VL	Tarane	VL	VL	VL	Terbol-Miniyeh	VL	VL	VL
Zaghartaghriane	VL	VL	VL	Zouq Bhannine	VL	VL	VL				

Nabatiye

Nabatiye

Municipality	16-Feb	17-Feb	18-Feb	Municipality	16-Feb	17-Feb	18-Feb	Municipality	16-Feb	17-Feb	18-Feb
Aabba	VL	VL	VL	Aazzi	VL	VL	VL	Adchit El-Chqif	VL	VL	VL
Ain Bou Swar	VL	VL	VL	Ain Kana	VL	VL	VL	Ali El-Taher	VL	VL	VL
Ansar	VL	VL	VL	Arab Salim	VL	VL	VL	Arnoun	VL	VL	VL
Bfaroue	VL	VL	VL	Breyqaah	VL	VL	VL	Charqiyeh	L	L	L
Choukine	VL	VL	VL	Deir El Zahrani	VL	VL	VL	Doueir El-Nabatiyeh	L	L	L
Habbouch El-Nabatiye	VL	VL	VL	Hamra El-Nabatiyeh	VL	VL	VL	Harouf El-Nabatiyeh	VL	VL	VL
Hmaile	VL	VL	VL	Houmin El Faouqa	VL	VL	VL	Houmin El Tahta	VL	VL	VL
Jarjough	VL	VL	VL	Jbaah El-Nabatiyeh	VL	VL	VL	Jebchit	VL	VL	VL
Kfar Djal El-Nabatiy	VL	VL	VL	Kfar Remmane	VL	VL	VL	Kfar Sir	VL	VL	VL
Kfar Tebnit	VL	VL	VL	Kfarfila	VL	VL	VL	Kfour El-Nabatieh	VL	VL	VL
Mayfadoun	VL	VL	VL	Mazraat Bsaffour	VL	VL	VL	Mazraat Chalbaal	VL	VL	VL
Mazraat Dmoul	VL	VL	VL	Mazraat El Khreibeh	VL	VL	VL	Mazraat El-Bayad El-	VL	VL	VL
Mazraat Kfarjaouz	VL	VL	VL	Mazraat Qalaat Meiss	VL	VL	VL	Nabatiyeh El-Fawka	VL	VL	VL
Nabatiyeh Et-Tahta	VL	VL	VL	Namiriyyeh	VL	VL	VL	Qaaqaaiyet El Jisr	VL	VL	VL
Qossaibeh El-Nabatiy	VL	VL	VL	Roumine	VL	VL	VL	Sarba El-Nabatieh	VL	VL	VL
Sir El-Gharbiyeh	VL	VL	VL	Toul	VL	VL	VL	Yehmor El-Nabatiyeh	VL	VL	VL
Zaoutar El Charkiyeh	VL	VL	VL	Zaoutar El-Gharbiyeh	VL	VL	VL	Zebdine El-Nabatiyeh	VL	VL	VL
Zefta	VL	VL	VL								

Hasbaiya

Municipality	16-Feb	17-Feb	18-Feb	Municipality	16-Feb	17-Feb	18-Feb	Municipality	16-Feb	17-Feb	18-Feb
Ain Jarfa	VL	VL	VL	Abou Qamha	VL	VL	VL	Ain Qania	VL	VL	VL
Bourghos	VL	VL	VL	Chebaa	VL	VL	VL	Chouaya Hasbaya	VL	VL	VL
Dellafeh	VL	VL	VL	Fardiss Hasbaiya	VL	VL	VL	Hasbaya	VL	VL	VL
Hbariyeh	VL	VL	VL	Kaoukaba Hasbaiya	VL	VL	VL	Kfar Chouba	VL	VL	VL
Kfar Hamam	VL	VL	VL	Kfeir El-Zait	VL	VL	VL	Khalwat Hasbaya	VL	VL	VL
Khreibet Hasbaiya	VL	VL	VL	Majidiyeh Hasbaiya	VL	VL	VL	Marj Ez-Zhour (Haouc	VL	VL	VL
Meri	VL	VL	VL	Mimass	VL	VL	VL	Rachaiya El-Fokhar	VL	VL	VL
Salaiyeb	VL	VL	VL								

Marjaayoun

Municipality	16-Feb	17-Feb	18-Feb	Municipality	16-Feb	17-Feb	18-Feb	Municipality	16-Feb	17-Feb	18-Feb
Aalmane Marjaayoun	VL	VL	VL	Aamra	VL	VL	VL	Adayseh Marjaayoun	VL	VL	VL
Adchit El-Koussair	VL	VL	VL	Ain Aarab Marjaayoun	VL	VL	VL	Bani Haiyann	VL	VL	VL
Blatt Marjaayoun	VL	VL	VL	Blida	VL	VL	VL	Borj El-Moulouk	VL	VL	VL
Boueyda Marjaayoun	VL	VL	VL	Deir Mimass	VL	VL	VL	Deir Siriane	VL	VL	VL
Dibbine	VL	VL	VL	Ebel El Saqi	VL	VL	VL	Houla	VL	VL	VL
Houra	VL	VL	VL	Kfar Kila	VL	VL	VL	Khiam Marjaayoun	VL	VL	VL

Klayaa	VL	VL	VL	Majdel Selem	VL	VL	VL	Marjaayoun	VL	VL	VL
Markaba	VL	VL	VL	Mays El-Jabal	VL	VL	VL	Mazraat Doumiat	VL	VL	VL
Mazraat Sarada	VL	VL	VL	Mhaibib	VL	VL	VL	Qabrikha	VL	VL	VL
Qantara	VL	VL	VL	Rab El-Thalathine	VL	VL	VL	Saouaneh Marjayoun	VL	VL	VL
Talloussa	VL	VL	VL	Taybeh Matjaayoun	VL	VL	VL	Touline	VL	VL	VL

Bent Jbail

Municipality	16-Feb	17-Feb	18-Feb	Municipality	16-Feb	17-Feb	18-Feb	Municipality	16-Feb	17-Feb	18-Feb
Ain-Ebel	VL	VL	VL	Aitaroun	VL	VL	VL	Aynata Bint Jbeil	VL	VL	VL
Ayta El-Chaeb	VL	VL	VL	Ayta El-Jabal	VL	VL	VL	Beit Lif	VL	VL	VL
Beit Yahoun	VL	VL	VL	Bint Jbeil	VL	VL	VL	Borj Qalaway	VL	VL	VL
Braachit	VL	VL	VL	Chakra	VL	VL	VL	Debel	VL	VL	VL
Deir Antar	VL	VL	VL	Froun	VL	VL	VL	Ghandouriyeh Bint Jb	VL	VL	VL
Hanine	VL	VL	VL	Hariss	VL	VL	VL	Hdatha	VL	VL	VL
Jmeyjmeh	VL	VL	VL	Kafra Bint Jbeil	VL	VL	VL	Kfar Dounine	VL	VL	VL
Khirbet Selm	VL	VL	VL	Kounine	VL	VL	VL	Maroun El Ras	VL	VL	VL
Qalaway	VL	VL	VL	Qaouzah	VL	VL	VL	Qatmoun	VL	VL	VL
Ramya Bint Jbeil	VL	VL	VL	Rchaf	VL	VL	VL	Rmeich	VL	VL	VL
Safad Al Battikh	VL	VL	VL	Salhaneh	VL	VL	VL	Serbine	VL	VL	VL
Sultanieh Bint Jbeil	VL	VL	VL	Tibnine	VL	VL	VL	Tiri	VL	VL	VL
Yaroun	VL	VL	VL	Yater	VL	VL	VL				

Mont Liban

Jbail

Municipality	16-Feb	17-Feb	18-Feb	Municipality	16-Feb	17-Feb	18-Feb	Municipality	16-Feb	17-Feb	18-Feb
Aabeydat	VL	VL	VL	Aalita	VL	VL	VL	Aamchit	L	VL	VL
Aarab El-Lahib	VL	VL	VL	Aarasta	VL	VL	VL	Adonis Jbeil	VL	VL	VL
Afqa Jbeil	VL	VL	VL	Ain El Delbeh Jbeil	VL	VL	VL	Ain El-Ghouayba	VL	VL	VL
Ain Jrain	VL	VL	VL	Ain Kfah	VL	VL	VL	Almat El Chemaliyat	VL	VL	VL
Almat El-Jenoubiya	VL	VL	VL	Aqoura	VL	VL	VL	Bayzoun	VL	VL	VL
Bchille Jbeil	VL	VL	VL	Bechtlida	VL	VL	VL	Behdaydat	VL	VL	VL
Beit Habbaq	VL	VL	VL	Bejjeh	VL	VL	VL	Bekhaaz	VL	VL	VL
Berbara Jbeil	L	VL	VL	Bintael	VL	VL	VL	Birket Hjoula	VL	VL	VL
Blatt Jbeil	VL	VL	VL	Boulhos	VL	VL	VL	Breyj Jbeil	VL	VL	VL
Chamat	VL	VL	VL	Chikhane	VL	VL	VL	Chmout	VL	VL	VL
Eddeh Jbeil	VL	VL	VL	Ehmej	VL	VL	VL	Fatre	VL	VL	VL
Ferhet	VL	VL	VL	Fghal	VL	VL	VL	Frat	VL	VL	VL
Ghabat	VL	VL	VL	Ghalboun	VL	VL	VL	Gharzouz	VL	VL	VL
Ghofrine	VL	VL	VL	Habil	VL	VL	VL	Halate	VL	VL	VL
Haqel	VL	VL	VL	Hbaline	VL	VL	VL	Hboub	VL	VL	VL
Hdeine	VL	VL	VL	Hema Er-Rehban	VL	VL	VL	Hema Mar Maroun Aann	VL	VL	VL
Hjoula	VL	VL	VL	Hosrayel	VL	VL	VL	Hsarat	VL	VL	VL
Hsoun	VL	VL	VL	Jaj	VL	VL	VL	Janne	VL	VL	VL
Jbeil	VL	VL	VL	Jeddeyel Jbeil	L	VL	VL	Jlisse	VL	VL	VL
Jouret El-Qattine	VL	VL	VL	Kfar Baal Annaya	VL	VL	VL	Kfar Kidde	VL	VL	VL
Kfar Kouas	VL	VL	VL	Kfar Mashoun	VL	VL	VL	Kfoun	VL	VL	VL

Kharbe Jbeil	VL	VL	VL	Laqlouq	VL	VL	VL	Lassa	VL	VL	VL
Lehfed	VL	VL	VL	Maad	VL	VL	VL	Mar Sarkis	VL	VL	VL
Mastita	L	VL	VL	Mayfouq	VL	VL	VL	Mazraat El Siyad	VL	VL	VL
Mazraat El-Maaden	VL	VL	VL	Mechane	VL	VL	VL	Mechmech Jbeil	VL	VL	VL
Mehrin	VL	VL	VL	Mejdel El-Akoura	VL	VL	VL	Mghayreh Jbeil	VL	VL	VL
Mounsef	L	VL	VL	Nahr Ibrahim	VL	VL	VL	Qahmez	VL	VL	VL
Qartaba	VL	VL	VL	Qartaboun	L	VL	VL	Qattara Jbeil	VL	VL	VL
Qorqraya	VL	VL	VL	Ramout	VL	VL	VL	Ras Osta	VL	VL	VL
Rihane Jbeil	ML	L	VL	Sakiet El-Khayt	VL	VL	VL	Saqi Richmaya	VL	VL	VL
Sebrine	VL	VL	VL	Seraita	VL	VL	VL	Souane Jbeil	VL	VL	VL
Tadmor	VL	VL	VL	Tartej	VL	VL	VL	Torzaiya	VL	VL	VL
Yanouh Jbeil	VL	VL	VL	Zibidine Jbeil	VL	VL	VL				

El Metn

Municipality	16-Feb	17-Feb	18-Feb	Municipality	16-Feb	17-Feb	18-Feb	Municipality	16-Feb	17-Feb	18-Feb
Aain El-Qabu	VL	VL	VL	Aain El-Qach	VL	VL	VL	Aain El-Teffaha	VL	VL	VL
Aain el-Safssaf El-M	VL	VL	VL	Abou Mizane	VL	VL	VL	Ain Aar	VL	VL	VL
Ain Alaq	VL	VL	VL	Ain El-Kharroube	VL	VL	VL	Ain El-Sendiane	VL	VL	VL
Ain El-Zeitoune	VL	VL	VL	Ain Saadeh	VL	VL	VL	Aintoura El-Matn	VL	VL	VL
Amaret Chalhoub	VL	VL	VL	Antelias	VL	VL	VL	Atchaneh	VL	VL	VL
Ayroun	VL	VL	VL	Baabdat	VL	VL	VL	Baouchariyeh	VL	VL	VL
Baskinta	VL	VL	VL	Beit Chabab	VL	VL	VL	Beit El-Chaar	VL	VL	VL
Beit El-Kekko	VL	VL	VL	Beit Mery	VL	VL	VL	Bhersaf	VL	VL	VL
Bikfaya	VL	VL	VL	Biyakout	VL	VL	VL	Bnabil	VL	VL	VL
Bourj Hammoud	VL	VL	VL	Bqennaya	VL	VL	VL	Broummana El-Matn	VL	VL	VL
Bsalim	VL	VL	VL	Bsifrine	VL	VL	VL	Bteghrine	VL	VL	VL
Chaouiye	VL	VL	VL	Chouaya El-Matn	VL	VL	VL	Choueir	VL	VL	VL
Chrine	VL	VL	VL	Dahr El Sawan El-Mat	VL	VL	VL	Daychouniyeh	VL	VL	VL
Dbayeh	VL	VL	VL	Deir Chamra	VL	VL	VL	Deir Mar Abda el Mch	VL	VL	VL
Deir Mar Roukouz	VL	VL	VL	Deir Tamiche	VL	VL	VL	Dik El-Mehdi	VL	VL	VL
Dikwaneh	VL	VL	VL	Douar El-Matn	VL	VL	VL	Fanar	VL	VL	VL
Fraike	VL	VL	VL	Haret El-Ballaneh	VL	VL	VL	Hbous	VL	VL	VL
Himlaya	VL	VL	VL	Jal El Did	VL	VL	VL	Jdeideh El-Metn	VL	VL	VL
Jouar El-Matn	VL	VL	VL	Jouret El-Ballout	VL	VL	VL	Kaaqour	VL	VL	VL
Kfar Aaqab	VL	VL	VL	Kfertay El-Matn	VL	VL	VL	Khenchara	VL	VL	VL
Khillet El-Mtain	VL	VL	VL	Konnabat Broummana	VL	VL	VL	Konnabat Salima	VL	VL	VL
Machraah El-Matn	VL	VL	VL	Majdel Tarchich	VL	VL	VL	Majzoub	VL	VL	VL
Mansouriyeh El-Metn	VL	VL	VL	Mar Boutros Karm Et-	VL	VL	VL	Mar Chaya et Mzekke	VL	VL	VL
Mar Moussa Ed-Douar	VL	VL	VL	Marjaba	VL	VL	VL	Masqa	VL	VL	VL
Mayasse	VL	VL	VL	Mazraat Deir Aoukar	VL	VL	VL	Mazraat El-Hadirat	VL	VL	VL
Mazraat Yachouh	VL	VL	VL	Mchikha	VL	VL	VL	Menqlet Mezher	VL	VL	VL
Mhaydseh Matn	VL	VL	VL	Mkalles	VL	VL	VL	Mrouj	VL	VL	VL
Mtain	VL	VL	VL	Mtaylor	VL	VL	VL	Nabay	VL	VL	VL
Naccache	VL	VL	VL	Ouadi Chahine	VL	VL	VL	Ouadi El-Karm El-Mat	VL	VL	VL
Ouata El-Mrouj	VL	VL	VL	Ouyoun El-Matn	VL	VL	VL	Qornet Chehwan	VL	VL	VL
Qornet El-Hamra	VL	VL	VL	Roumieh	VL	VL	VL	Sfeilet Bikfaya	VL	VL	VL
Sinn El-Fil	VL	VL	VL	Zabbougha	VL	VL	VL	Zalqa	VL	VL	VL

Zarouon	VL	VL	VL	Zekrite	VL	VL	VL	Zighrine El-Matn	VL	VL	VL
Zouk El-Khrab	VL	VL	VL								

Chouf

Municipality	16-Feb	17-Feb	18-Feb	Municipality	16-Feb	17-Feb	18-Feb	Municipality	16-Feb	17-Feb	18-Feb
Aalmane El-Chouf	VL	VL	VL	Aammq El-Chouf	VL	VL	VL	Ain Ouzein	VL	VL	VL
Ain Qani	VL	VL	VL	Ain Zhalta	VL	VL	VL	Ainbal	VL	VL	VL
Amatour	VL	VL	VL	Anout	VL	VL	VL	Atrine	VL	VL	VL
Baadarane	VL	VL	VL	Baaqline	VL	VL	VL	Baasir	VL	VL	VL
Barja	VL	VL	VL	Barouk	VL	VL	VL	Bater	VL	VL	VL
Batloun	VL	VL	VL	Bayqoun	VL	VL	VL	Bchetfine	VL	VL	VL
Beiteddine	VL	VL	VL	Benouati Ech-Chouf	VL	VL	VL	Berjein	VL	VL	VL
Bireh et Mtalleh	VL	VL	VL	Biret El-Chouf	VL	VL	VL	Bkechtine Ouel Mchei	VL	VL	VL
Bkifa El-Chouf	VL	VL	VL	Botme	VL	VL	VL	Bqaiaa Ech-Chouf	VL	VL	VL
Bsaba El-Chouf	VL	VL	VL	Chammis El-Chouf	VL	VL	VL	Chehim	VL	VL	VL
Chemaarine	VL	VL	VL	Chourit	VL	VL	VL	Daher El-Chouf	VL	VL	VL
Dalhoun	VL	VL	VL	Damour	VL	VL	VL	Daraya El-Chouf	VL	VL	VL
Deir El-Moukhalles	VL	VL	VL	Deir Baba	VL	VL	VL	Deir Dourit	VL	VL	VL
Deir El-Qamar	VL	VL	VL	Deir Kouche	VL	VL	VL	Dibbieh	VL	VL	VL
Dmit	VL	VL	VL	Fouara Jaafar	VL	VL	VL	Fraidis El-Chouf	VL	VL	VL
Ghabet Jaafar	VL	VL	VL	Gharife	VL	VL	VL	Haret Jandal	VL	VL	VL
Hasrout	VL	VL	VL	Jadra	VL	VL	VL	Jahlieh	VL	VL	VL
Jbeih El-Chouf	VL	VL	VL	Jdeidet El-Chouf	VL	VL	VL	Jiyeh	VL	VL	VL
Jleilyeh	VL	VL	VL	Jmailiyeh	VL	VL	VL	Joun	VL	VL	VL
Kahlounie El-Chouf	VL	VL	VL	Ketermaya	VL	VL	VL	Kfar Faqoud	VL	VL	VL
Kfar Hamal	VL	VL	VL	Kfar Him	VL	VL	VL	Kfar Katra	VL	VL	VL
Kfar Niss	VL	VL	VL	Kfar hay	VL	VL	VL	Kfarnabrakh	VL	VL	VL
Khirbet Bisri	VL	VL	VL	Knayse El-Chouf	VL	VL	VL	Maaniyeh	VL	VL	VL
Maasser Beiteddine	VL	VL	VL	Maasser El-Chouf	VL	VL	VL	Majdalouna	VL	VL	VL
Majdel El-Meouch	VL	VL	VL	Mazboud	VL	VL	VL	Mazmoura	VL	VL	VL
Mazraat El Chouf	VL	VL	VL	Mazraat El Daher	VL	VL	VL	Mazraat El-Douair	VL	VL	VL
Mechref	VL	VL	VL	Mghairie	VL	VL	VL	Mghayrie El-Chouf	VL	VL	VL
Moukhtara	VL	VL	VL	Mrusti	VL	VL	VL	Mtolle	VL	VL	VL
Naameh	VL	VL	VL	Niha El-Chouf	VL	VL	VL	Ouadi Abou Youssef	VL	VL	VL
Ouadi Ed-Deir	VL	VL	VL	Ouadi El-Sit	VL	VL	VL	Ouadi bnehlay	VL	VL	VL
Qraibeh	VL	VL	VL	Qreiaa	VL	VL	VL	Rmayle El-Chouf	VL	VL	VL
Semqaniyeh	VL	VL	VL	Sibline	VL	VL	VL	Sirjbeil	VL	VL	VL
Warhanieh	VL	VL	VL	Werdaniyeh	VL	VL	VL	Zaarourieh	VL	VL	VL

Baabda

Municipality	16-Feb	17-Feb	18-Feb	Municipality	16-Feb	17-Feb	18-Feb	Municipality	16-Feb	17-Feb	18-Feb
Abadiyeh	VL	VL	VL	Ain Mouaffaq	VL	VL	VL	Araiya	VL	VL	VL
Arbaniyeh	VL	VL	VL	Arsoun	VL	VL	VL	Baabda	VL	VL	VL
Baalchmey	VL	VL	VL	Bmaryam	VL	VL	VL	Bourj El-Brajneh	VL	VL	VL
Boutchay	VL	VL	VL	Bsaba Baabda	VL	VL	VL	Btekhney	VL	VL	VL
Btibyat	VL	VL	VL	Bzbeddine	VL	VL	VL	Chbeniyeh	VL	VL	VL
Chiyah	VL	VL	VL	Chmeisset Baabda	VL	VL	VL	Chouit	VL	VL	VL
Deir El-harf	VL	VL	VL	Deir Khouna	VL	VL	VL	Dlaybeh	VL	VL	VL

Falougha	VL	VL	VL	Furn El-Chebbak	VL	VL	VL	Hadath Beyrouth	VL	VL	VL
Halaliyeh Baabda	VL	VL	VL	Hammana	VL	VL	VL	Haret El Sett	VL	VL	VL
Haret Hamze	VL	VL	VL	Haret Hreik	VL	VL	VL	Hasbaiya El-Metn	VL	VL	VL
Jouar El-Hoz	VL	VL	VL	Jouret Arsoun	VL	VL	VL	Kfar Chima	VL	VL	VL
Kfar Selouane	VL	VL	VL	Khalouat Baabda	VL	VL	VL	Kneisset Baabda	VL	VL	VL
Laylakeh	VL	VL	VL	Louayzeh Baabda	VL	VL	VL	Merdache	VL	VL	VL
Mzairaa Baabda	VL	VL	VL	Ouadi Chahrour El Ol	VL	VL	VL	Ouadi Chahrour El So	VL	VL	VL
Qalaa Baabda	VL	VL	VL	Qhraybe Baabda	VL	VL	VL	Qobbayaa	VL	VL	VL
Qornayel	VL	VL	VL	Qortada	VL	VL	VL	Qrayeh Baabda	VL	VL	VL
Qsaibeh Baabda	VL	VL	VL	Qtale Baabda	VL	VL	VL	Ras El Metn	VL	VL	VL
Ras El-Haref	VL	VL	VL	Rouayset El-Ballout	VL	VL	VL	Salima Baabda	VL	VL	VL
Tahouitat El Ghadir	VL	VL	VL	Tarchich	VL	VL	VL	Zandouqa	VL	VL	VL

Aley

Municipality	16-Feb	17-Feb	18-Feb	Municipality	16-Feb	17-Feb	18-Feb	Municipality	16-Feb	17-Feb	18-Feb
Abey	VL	VL	VL	Aghmid	VL	VL	VL	Ain Dara	VL	VL	VL
Ain Drafil	VL	VL	VL	Ain El Halazoun	VL	VL	VL	Ain El-Rmmaneh	VL	VL	VL
Ain Jedideh	VL	VL	VL	Ain Ksour	VL	VL	VL	Ain Onoub	VL	VL	VL
Ain Traz	VL	VL	VL	Ainab	VL	VL	VL	Aley	VL	VL	VL
Aramoun	VL	VL	VL	Aytat	VL	VL	VL	Azouniyeh	VL	VL	VL
Baawerta	VL	VL	VL	Badghan Oua Wadi Bad	VL	VL	VL	Bassatine	VL	VL	VL
Bayssour	VL	VL	VL	Bchamoun	VL	VL	VL	Bdadoun	VL	VL	VL
Behouara	VL	VL	VL	Bennay	VL	VL	VL	Bhamdoun El-Dayaa	VL	VL	VL
Bhamdoun El-Mhatta	VL	VL	VL	Bkhechtey	VL	VL	VL	Bleibel	VL	VL	VL
Bmakine	VL	VL	VL	Bmehray	VL	VL	VL	Bouzrid	VL	VL	VL
Bserrine	VL	VL	VL	Bsous	VL	VL	VL	Btalloun	VL	VL	VL
Btater	VL	VL	VL	Chanay	VL	VL	VL	Charoun	VL	VL	VL
Chartoun	VL	VL	VL	Chemlane	VL	VL	VL	Choueifat El-Aamrous	VL	VL	VL
Choueifat El-Oumara	VL	VL	VL	Choueifat El-Quoubbe	VL	VL	VL	Dakkoun	VL	VL	VL
Deir Qoubel	VL	VL	VL	Dfoun	VL	VL	VL	Douair El Remmaneh	VL	VL	VL
Ghaboun	VL	VL	VL	Habramoun	VL	VL	VL	Homs Oua Hama	VL	VL	VL
Houmal	VL	VL	VL	Jisr El Qadi	VL	VL	VL	Kehaleh	VL	VL	VL
Keyfoun	VL	VL	VL	Kfar Aamey	VL	VL	VL	Kommatyeh	VL	VL	VL
Maasrati	VL	VL	VL	Majdel Baana	VL	VL	VL	Mansourieh et Ain El	VL	VL	VL
Mazraat El-Nahr	VL	VL	VL	Mchakhte	VL	VL	VL	Mecherfeh	VL	VL	VL
Mejdlaya	VL	VL	VL	Mrayjat	VL	VL	VL	Ramliyah	VL	VL	VL
Rechmaya	VL	VL	VL	Rejmeh	VL	VL	VL	Remhala	VL	VL	VL
Rouayset El Neemane	VL	VL	VL	Saoufar	VL	VL	VL	Selfaya	VL	VL	VL
Sirhmoul	VL	VL	VL	Souq El Ghareb	VL	VL	VL	Taazanieh	VL	VL	VL

Kesrouane

Municipality	16-Feb	17-Feb	18-Feb	Municipality	16-Feb	17-Feb	18-Feb	Municipality	16-Feb	17-Feb	18-Feb
Achkout	VL	VL	VL	Adma Oua Dafneh	VL	VL	VL	Ain Ed-Delbe Kesroua	VL	VL	VL
Ain El-Rihane	VL	VL	VL	Aintoura Kesrouane	VL	VL	VL	Ajaltoun	VL	VL	VL
Akaybeh Kesrouane	VL	VL	VL	Aramoun Kesrouane	VL	VL	VL	Azra ouel Ozor	VL	VL	VL
Ballouneh	VL	VL	VL	Batha	VL	VL	VL	Bekaatat Achkout	VL	VL	VL
Bekaatat Kanaan	VL	VL	VL	Bizhel	VL	VL	VL	Bouar	VL	VL	VL
Bqaatouta	VL	VL	VL	Bqaq Ed-Dine	VL	VL	VL	Bzommar	VL	VL	VL

Chahtoul	VL	VL	VL	Chnaniir	VL	VL	VL	Chouan	VL	VL	VL
Daraya Kesrouane	VL	VL	VL	Darououn	VL	VL	VL	Deir Baqlouch	VL	VL	VL
Dlebta	VL	VL	VL	Eghbeh	VL	VL	VL	Faraya	VL	VL	VL
Fatka	VL	VL	VL	Feytroun	VL	VL	VL	Ghazir	VL	VL	VL
Ghbaleh Kesrouane	VL	VL	VL	Ghedrass	VL	VL	VL	Ghosta	VL	VL	VL
Ghyneh	VL	VL	VL	Harharaya w Kattine	VL	VL	VL	Harissa Kesrouane	VL	VL	VL
Hayata	VL	VL	VL	Hosein	VL	VL	VL	Hrajel	VL	VL	VL
Jdeideh Ghazir	VL	VL	VL	Jeita	VL	VL	VL	Jounieh Ghadir	VL	VL	VL
Jounieh Haret Sakhr	VL	VL	VL	Jounieh Salel Alma	VL	VL	VL	Jounieh Sarba	VL	VL	VL
Jouret Bedrane	VL	VL	VL	Jouret Mhad	VL	VL	VL	Jouret Termos	VL	VL	VL
Kfar Debiane	VL	VL	VL	Kfar Tay Kesrouane	VL	VL	VL	Kfar Yassine	VL	VL	VL
Kfour Kesrouane	VL	VL	VL	Kharayeb Nahr Ibrahi	VL	VL	VL	Klayaat Kesrouane	VL	VL	VL
Maarab	VL	VL	VL	Maaysra Kesrouane	VL	VL	VL	Mayrouba	VL	VL	VL
Mazraat Er-Ras	VL	VL	VL	Mazraat Mrah El-Mir	VL	VL	VL	Mchaa El Ftouh	VL	VL	VL
Mchaa Faraya	VL	VL	VL	Mchaa Kfar Dibiane	VL	VL	VL	Mghaer	VL	VL	VL
Mradiyah	VL	VL	VL	Nahr Ed-Dahab	VL	VL	VL	Nammoura Kesrouane	VL	VL	VL
Ouata El Jaouz	VL	VL	VL	Ouata Sillam	VL	VL	VL	Raachine	VL	VL	VL
Rayfoun	VL	VL	VL	Safra Kesrouane	VL	VL	VL	Shayle Kesrouane	VL	VL	VL
Tabarja	VL	VL	VL	Yahchouch	VL	VL	VL	Zaaytreh	VL	VL	VL
Zeytoun	VL	VL	VL	Zouk Mikael	VL	VL	VL	Zouk Mosbeh	VL	VL	VL

Baalbek_Hermel

Baalbek

Municipality	16-Feb	17-Feb	18-Feb	Municipality	16-Feb	17-Feb	18-Feb	Municipality	16-Feb	17-Feb	18-Feb
Aadous	VL	VL	VL	Aamchki	VL	VL	VL	Aarsal	VL	VL	VL
Ain Baalbek	VL	VL	VL	Ain Bourday	VL	VL	VL	Ain El-Benye	VL	VL	VL
Ain El-Jaouz Baalbek	VL	VL	VL	Ain El-Siya Chadoura	VL	VL	VL	Al Khodr Baalbek	VL	VL	VL
Al Nabi Chit	VL	VL	VL	Aynata Baalbek	VL	VL	VL	Baalbek	VL	VL	VL
Bachwat	VL	VL	VL	Barqa	VL	VL	VL	Bednayel Baalbak	VL	VL	VL
Beit Chama	VL	VL	VL	Bijjaje	VL	VL	VL	Bouday	VL	VL	VL
Brital	VL	VL	VL	Btadi	VL	VL	VL	Chaat	VL	VL	VL
Chaibe	VL	VL	VL	Chlifa	VL	VL	VL	Chmestar	VL	VL	VL
Dar El-Oussa	VL	VL	VL	Deir El-Ahmar	VL	VL	VL	Deir Mar Maroun Baal	VL	VL	VL
Douris	VL	VL	VL	Fakiha	VL	VL	VL	Hadath Baalbek	VL	VL	VL
Ham	VL	VL	VL	Haour Taala	VL	VL	VL	Hizzine	VL	VL	VL
Hlebta	VL	VL	VL	Hosh Barada	VL	VL	VL	Hosh El Dahab	VL	VL	VL
Hosh El Snid	VL	VL	VL	Hosh El-Nabi	VL	VL	VL	Hosh El-Rafiq	VL	VL	VL
Hosh Tal Safiya	VL	VL	VL	Hrebta	VL	VL	VL	laat	VL	VL	VL
Jebaa	VL	VL	VL	Jenta	VL	VL	VL	Kfar Dabach	VL	VL	VL
Kfar Dane	VL	VL	VL	Khraibeh El-Hermel	VL	VL	VL	Khreibet Baalbek	VL	VL	VL
Kneisset Baalbek	VL	VL	VL	Labueh	VL	VL	VL	Maarboun	VL	VL	VL
Majdaloun	VL	VL	VL	Maqneh	VL	VL	VL	Mazraat Beit Mcheik	VL	VL	VL
Misraya	VL	VL	VL	Moqraq	VL	VL	VL	Nabha El-Damdoum	VL	VL	VL
Nabi Chbay	VL	VL	VL	Nabi Osman	VL	VL	VL	Nahleh baalbek	VL	VL	VL
Ouadi El-Oss	VL	VL	VL	Qaa Baayoun	VL	VL	VL	Qaa Jouar Maqiye	L	L	L
Qaa Ouadi El-Khanzir	L	L	L	Qah Baalbek	VL	VL	VL	Qarha Baalbek	VL	VL	VL

Qsarnaba	VL	VL	VL	Ram Baalbek	VL	VL	VL	Ras Baalbek El Sahl	VL	VL	VL
Ras Baalbek El-Charq	VL	VL	VL	Riha	VL	VL	VL	Saaide	VL	VL	VL
Sbouba	VL	VL	VL	Seriine El-Tahta	VL	VL	VL	Slouqi	VL	VL	VL
Taiba Baalbek	VL	VL	VL	Talia	VL	VL	VL	Taraiya	VL	VL	VL
Temnin El Fawqa	VL	VL	VL	Temnin El-Tahta	VL	VL	VL	Tfail	VL	VL	VL
Yahfoufa	VL	VL	VL	Yammouneh	VL	VL	VL	Younine	VL	VL	VL
Zboud	VL	VL	VL								

Hermel

Municipality	16-Feb	17-Feb	18-Feb	Municipality	16-Feb	17-Feb	18-Feb	Municipality	16-Feb	17-Feb	18-Feb
Charbine El-Hermel	VL	VL	VL	Hermel Jbab	VL	VL	VL	Hermel	VL	VL	VL
Maaysra El-Hermel	VL	VL	VL	Michaa Mrajhine	VL	VL	VL	Ouadi Faara	VL	VL	VL
Ras Baalbek - Ouadi	VL	VL	VL	Ras Baalbek El Gharb	VL	VL	VL	Zighrine	VL	VL	VL

Akkar

Akkar

Municipality	16-Feb	17-Feb	18-Feb	Municipality	16-Feb	17-Feb	18-Feb	Municipality	16-Feb	17-Feb	18-Feb
Aain Tinta	VL	VL	VL	Aaiyat	VL	VL	VL	Aakkar El-Aatiqa	VL	VL	VL
Aamar Akkar	VL	VL	VL	Aamar El Baykat	VL	VL	VL	Aamayer	VL	VL	L
Aamriyet Akkar	VL	VL	VL	Aandqet	VL	VL	VL	Aarmeh	VL	VL	VL
Aarqa	VL	VL	VL	Aawaynat	VL	VL	VL	Aayoun Akkar	VL	VL	VL
Abboudiye	VL	VL	VL	Ain El-Zeit	VL	VL	VL	Ain Yaaqoub	VL	VL	VL
Akroum	VL	VL	VL	Aridet Cheikh Zennad	L	VL	VL	Baldeh w Mazraat Bal	VL	VL	VL
Barcha	VL	VL	VL	Bardeh	VL	VL	VL	Bebnine	VL	VL	VL
Beino	VL	VL	VL	Beit Ayoub	VL	VL	VL	Beit El-Haouch	VL	VL	VL
Beit Mellat	VL	VL	VL	Beit Younes	VL	VL	VL	Berbara Akkar	VL	VL	VL
Berqayel	VL	VL	VL	Bezbina	VL	VL	VL	Bireh Akkar	VL	VL	VL
Borj	VL	VL	VL	Bqerezla	VL	VL	VL	Bzal	VL	VL	VL
Chane	VL	VL	VL	Chaqdouf	VL	VL	VL	Charbila	VL	VL	VL
Cheikh Mohammad	VL	VL	VL	Cheikh Taba Es-Sahl	VL	VL	VL	Cheikh Taba	VL	VL	VL
Cheikh Zennad	L	VL	VL	Cheikhlar	VL	VL	VL	Chir Hmairine	VL	VL	VL
Daghle	VL	VL	VL	Dahr Laissine	VL	VL	VL	Darine	VL	VL	VL
Dawra	VL	VL	VL	Dawsa w Baghdadi	VL	VL	VL	Dayret Nahr El-Kabir	VL	L	L
Deir Dalloum	VL	VL	VL	Deir Jennine	VL	VL	VL	Denbou	VL	VL	VL
Dibbabiyyeh	VL	VL	VL	Douair Aadwiyeh	VL	VL	VL	Fassikine	VL	VL	VL
Fnaydek	VL	VL	VL	Fraydes Akkar	VL	VL	VL	Ghazayle	VL	VL	VL
Habchit	VL	VL	VL	Hakour	VL	VL	VL	Halba	VL	VL	VL
Haouchab	VL	VL	VL	Hayssat	VL	VL	VL	Haytla	VL	VL	VL
Hayzouq	VL	VL	VL	Hedd	VL	VL	VL	Hmaira Akkar	VL	VL	VL
Hmaiss Akkar	VL	VL	VL	Hnaider	L	L	ML	Hokr Ed-Dahri	VL	VL	VL
Hokr Etti	VL	VL	VL	Hokr Jouret Srar	VL	VL	VL	Houaich	VL	VL	VL
Hrar	VL	VL	VL	Idbil	VL	VL	VL	llat	VL	VL	VL
Janine	VL	VL	VL	Jdeidet El-Joumeh	VL	VL	VL	Jdeidet El-Kaiteh	VL	VL	VL
Jebraïel	VL	VL	VL	Kafr	VL	VL	VL	Kafr	VL	VL	VL
Karm Asfour	VL	VL	VL	Kfar Melki Akkar	VL	VL	VL	Kfar Noun	VL	VL	VL
Kfarharra	VL	VL	VL	Khalsa	VL	VL	VL	Kharnoubet Akkar	VL	VL	VL

Khirbet Daoud Aakkar	VL	VL	VL	Khirbet El Remmane	VL	VL	VL	Khirbet Shar	VL	VL	VL
Khoreybet El-Jindi	VL	VL	VL	Khreibet Aakkar	VL	VL	VL	Kneisset Aakkar	VL	VL	VL
Kneisset Hnaider	M	M	M	Knisse	VL	VL	VL	Kroum El-Aarab	VL	VL	VL
Kwachra	VL	VL	VL	Kweykhat	VL	VL	VL	Machta Hammoud	VL	VL	VL
Majdala	VL	VL	VL	Majdel Akkar	VL	VL	VL	Mar Touma	VL	VL	VL
Marlaya Melhem	VL	VL	VL	Mashha	VL	VL	VL	Massoudiye	VL	VL	VL
Mazraat Beit Ghattas	VL	VL	VL	Mazraat En-Nahriye	VL	VL	VL	Mechmech	VL	VL	VL
Memneh	VL	VL	VL	Mhammara	VL	VL	VL	Mighraq Aakkar	VL	VL	VL
Minyara	VL	VL	VL	Moqayteh	ML	L	L	Mounjez	VL	VL	VL
Msalla	VL	VL	VL	Mzeihmeh	VL	VL	VL	Nfaiseh	VL	VL	VL
Noura Et-Tahta	VL	VL	VL	Ouadi El-Haour	VL	VL	VL	Ouadi El-Jamous	VL	VL	VL
Ouyoun El-Ghizlane	VL	VL	VL	Qaabarine	VL	VL	VL	Qabaait	VL	VL	VL
Qachlaq	VL	VL	VL	Qantara Aakkar	VL	VL	VL	Qarha Aakkar	M	M	M
Qarqaf	VL	VL	VL	Qboula	VL	VL	VL	Qleiaat Aakkar	L	L	L
Qloud El-Baqie	VL	VL	VL	Qobaiyat Aakkar	VL	VL	VL	Qobbat Chamrat	L	L	L
Qorayat	VL	VL	VL	Qornet Aakkar	VL	VL	VL	Qsair Aakkar	VL	VL	VL
Rahbe	VL	VL	VL	Rihaniyet Aakkar	VL	VL	VL	Rmah	VL	VL	VL
Rmoul	L	L	L	Saadine	VL	VL	VL	Sadaqa	VL	VL	VL
Saidnaya	VL	VL	VL	Sammouniye	VL	VL	VL	Sayssouq	VL	VL	VL
Semmaqiye	VL	VL	VL	Semmaqli	VL	VL	VL	Sfinet El-Dreib	VL	VL	VL
Sfinet El-Qaitaa	VL	VL	VL	Sindyanet Zeidane	VL	VL	VL	Souaisset Aakkar	VL	VL	VL
Srar	VL	VL	VL	Tal Abbas El Gharby	VL	VL	VL	Tal Abbas El-Chargy	VL	VL	VL
Tal Biret	VL	VL	VL	Tal Hmayra	VL	VL	VL	Tal Maayan Tal Kiri	VL	VL	VL
Tal Sibel	VL	VL	VL	Tallet Chattaha	VL	VL	VL	Tikrit	VL	VL	VL
Tleil	VL	VL	VL	Tshea	VL	VL	VL	Zawarib	VL	VL	VL
Zouq El Hosniyeh	VL	VL	VL	Zouq El-Haddara	VL	VL	VL	Zouq El-Hbalsa	VL	VL	VL
Zouq El-Mogachrine	VL	VL	VL								

Sud

Sour

Municipality	16-Feb	17-Feb	18-Feb	Municipality	16-Feb	17-Feb	18-Feb	Municipality	16-Feb	17-Feb	18-Feb
Aaiyeh	VL	VL	VL	Aalma El-Chaab	VL	VL	VL	Aaytit	VL	VL	VL
Abbassiyeh Sour	VL	VL	VL	Abou Chech	VL	VL	VL	Ain Abou Abdallah	VL	VL	VL
Ain Baal	VL	VL	VL	Arzoun	VL	VL	VL	Aziyeh	VL	VL	VL
Baflaya	VL	VL	VL	Barich	VL	VL	VL	Batouliyeh	VL	VL	VL
Bayad	VL	VL	VL	Bazouriyeh	VL	VL	VL	Bediass	VL	VL	VL
Bestiyat	VL	VL	VL	Borj El Chemali	VL	VL	VL	Borj En-Naqoura	L	VL	VL
Borj Rahhal	VL	VL	VL	Boustane	VL	VL	VL	Btaychiyeh	VL	VL	VL
Chaaitiye	VL	VL	VL	Chameh	VL	VL	VL	Chehabiye	VL	VL	VL
Chehour	VL	VL	VL	Chihine	VL	VL	VL	Debaal Sour	VL	VL	VL
Deir Amess	VL	VL	VL	Deir Kifa	VL	VL	VL	Deir Qanoun El-Ain	VL	VL	VL
Deir Qanoun El-Naher	VL	VL	VL	Derdghaiya	VL	VL	VL	Dhayra	VL	VL	VL
Halloussiyeh	VL	VL	VL	Hamoul	VL	VL	VL	Hanaouey	VL	VL	VL
Henniye	VL	VL	VL	Hmairi Sour	VL	VL	VL	Iskandarouna Sour	VL	VL	VL
Jbal El Botom	VL	VL	VL	Jebbin	VL	VL	VL	Jennata	VL	VL	VL
Jijim	VL	VL	VL	Jouaiya	VL	VL	VL	Kneisset Sour	VL	VL	VL

Maarake	VL	VL	VL	Maaroub	VL	VL	VL	Majadel	VL	VL	VL
Majdalzoun	VL	VL	VL	Mansouri Sour	VL	VL	VL	Marnba	VL	VL	VL
Marouahine	VL	VL	VL	Mazraat El-Zalloutiy	VL	VL	VL	Mazraat Mechref	VL	VL	VL
Mazraat Tayr Semhat	VL	VL	VL	Mheilib	L	VL	VL	Neffakhiyeh	VL	VL	VL
Niha Sour	VL	VL	VL	Ouadi Jilo	VL	VL	VL	Qana	VL	VL	VL
Qolaileh Sour	VL	VL	VL	Rechknany	VL	VL	VL	Rmadiyah	VL	VL	VL
Selha Sour	VL	VL	VL	Siddiqine	VL	VL	VL	Sour	L	VL	VL
Srifa	VL	VL	VL	Tayr Debbe	VL	VL	VL	Tayr Felsay	VL	VL	VL
Tayr Harfa	VL	VL	VL	Touayri	VL	VL	VL	Toura	VL	VL	VL
Yanouh Sour	VL	VL	VL	Yarine	VL	VL	VL	Zebqine	VL	VL	VL

Saida

Municipality	16-Feb	17-Feb	18-Feb	Municipality	16-Feb	17-Feb	18-Feb	Municipality	16-Feb	17-Feb	18-Feb
Aanqoun	VL	VL	VL	Aaqtanit	VL	VL	VL	Aarab Ej-Jall	VL	VL	VL
Aarab Tabbaya	VL	VL	VL	Abra Saida	VL	VL	VL	Adloun	VL	VL	VL
Adousiyeh	VL	VL	VL	Ain-El-Deleb	VL	VL	VL	Arzai	VL	VL	VL
Babliyah	VL	VL	VL	Barty	VL	VL	VL	Bissariyeh	VL	VL	VL
Bnaafoul	VL	VL	VL	Bqosta	VL	VL	VL	Bramiy	VL	VL	VL
Daoudiyeh	VL	VL	VL	Dareb El-Sim	VL	VL	VL	Erkay	VL	VL	VL
Ghassanieh	VL	VL	VL	Ghazieh	VL	VL	VL	Hajjeh	VL	VL	VL
Haret Saida	VL	VL	VL	Hartiyeh	VL	VL	VL	Hlaliye Saida	VL	VL	VL
Insariyat	VL	VL	VL	Jazira Saida	VL	VL	VL	Kafar Bit	VL	VL	VL
Kaoutariyet El-Siyad	L	L	L	Kfar Chellal	VL	VL	VL	Kfar Hatta Saida	VL	VL	VL
Kfar Milke Saida	VL	VL	VL	Khartoum	VL	VL	VL	Khaziz	VL	VL	VL
Khirbet Ed-Douair Sa	VL	VL	VL	Khirbet El-Bassal	VL	VL	VL	Khrayeb Saida	VL	VL	VL
Loubieh	VL	VL	VL	Maghdouche	VL	VL	VL	Majdelyoun	VL	VL	VL
Matariyet El-Choumar	VL	VL	VL	Matayriyeh	VL	VL	VL	Mazraat 'Mseileh	VL	VL	VL
Mazraat 'Snaiber	VL	VL	VL	Mazraat Aarab Soukka	VL	VL	VL	Mazraat Deir Taqla	VL	VL	VL
Mazraat El Yahoudiye	L	VL	VL	Mazraat El-Housseini	VL	VL	VL	Mazraat El-Mhaydaleh	VL	VL	VL
Mazraat El-Ouasta	VL	VL	VL	Mazraat Jamjim	VL	VL	VL	Mazraat Kaoutariyet	VL	VL	VL
Mazraat Kfar Badda	VL	VL	VL	Mazraat Oussamiyat	VL	VL	VL	Mazraat Sari	VL	VL	VL
Mazraat Sinai	VL	VL	VL	Meemariyeh	VL	VL	VL	Merouaniyeh	VL	VL	VL
Miyeh ou Miyeh	VL	VL	VL	Najjariyeh	VL	VL	VL	Qaaqaiyat El-Snaouba	VL	VL	VL
Qnarit	VL	VL	VL	Qraiye Saida	VL	VL	VL	Saida Ed-Dekermane	L	VL	VL
Saida El-Oustani	VL	VL	VL	Saida El-Qadimeh	VL	VL	VL	Saida Kefraya	VL	VL	VL
Saksakiyeh	L	VL	VL	Salhie Saida	VL	VL	VL	Sarafand	VL	VL	VL
Sfenta	VL	VL	VL	Tafahta	VL	VL	VL	Tanbourit	VL	VL	VL
Tebna	VL	VL	VL	Zaghdraiya	VL	VL	VL	Zeita	VL	VL	VL
Zrariyeh	VL	VL	VL								

Jezzine

Municipality	16-Feb	17-Feb	18-Feb	Municipality	16-Feb	17-Feb	18-Feb	Municipality	16-Feb	17-Feb	18-Feb
Ain El-Mir (El Estab	VL	VL	VL	Anane	VL	VL	VL	Aramta	VL	VL	VL
Ariya	VL	VL	VL	Aychiyeh	VL	VL	VL	Azour	VL	VL	VL
Baba	VL	VL	VL	Bayssour Jezzine	VL	VL	VL	Benoueteh Jezzine	VL	VL	VL
Bhannine	VL	VL	VL	Bisri	VL	VL	VL	Bkassine	VL	VL	VL
Bouslaya	VL	VL	VL	Btedine El-Leqech	VL	VL	VL	Chbail	VL	VL	VL
Choualiq Jezzine	VL	VL	VL	Dahr Ed-Deir	VL	VL	VL	Deir El Qattine	VL	VL	VL

Demachqiyeh	VL	VL	VL	Ghabbatiyeh	VL	VL	VL	Harf Jezzine	VL	VL	VL
Hassaniyeh	VL	VL	VL	Haytouleh	VL	VL	VL	Haytura	VL	VL	VL
Hidab	VL	VL	VL	Homsiyeh	VL	VL	VL	Jabal Toura	VL	VL	VL
Jarmaq	VL	VL	VL	Jensnaya	VL	VL	VL	Jernaya	VL	VL	VL
Jezzine	VL	VL	VL	Karkha	VL	VL	VL	Kfar Falous	VL	VL	VL
Kfar Houna	VL	VL	VL	Kfar Jarrah	VL	VL	VL	Lebaa	VL	VL	VL
Louayzet Jezzine	VL	VL	VL	Machmouche	VL	VL	VL	Mahmoudiyeh Jezzine	VL	VL	VL
Maknounye Jezzine	VL	VL	VL	Maraat Ouzaïyeh	VL	VL	VL	Mazraat Daraya	VL	VL	VL
Mazraat El-Aarqoub	VL	VL	VL	Mazraat El-Mathane	VL	VL	VL	Mazraat El-Rahbane	VL	VL	VL
Mazraat Khallet Khaz	VL	VL	VL	Mazraat Louzid (Loua	VL	VL	VL	Mazraat Qrouh	VL	VL	VL
Mazraat Tamra	VL	VL	VL	Mazraat Zighrine Jez	VL	VL	VL	Mazraat	VL	VL	VL
Mharbiyeh	VL	VL	VL	Midane Jezzine	VL	VL	VL	Mjeydel Jezzine	VL	VL	VL
Mlikh	VL	VL	VL	Mrah El-Hbasse	VL	VL	VL	Ouadi Baanquodaine	VL	VL	VL
Ouadi El-Laymoun	VL	VL	VL	Ouardiyeh	VL	VL	VL	Qabaa Jezzine	VL	VL	VL
Qatrani	VL	VL	VL	Qaytouleh	VL	VL	VL	Qtaleh Jezzine	VL	VL	VL
Rihane Jezzine	VL	VL	VL	Rimat	VL	VL	VL	Roum	VL	VL	VL
Roummanet	VL	VL	VL	Sabbah	VL	VL	VL	Saydoun	VL	VL	VL
Sfaray	VL	VL	VL	Snaya	VL	VL	VL	Sojoud	VL	VL	VL
Srayri	VL	VL	VL	Taaïd	VL	VL	VL	Wadi Jezzine	VL	VL	VL
Zhalta	VL	VL	VL								

Bekaa

West Bekaa

Municipality	16-Feb	17-Feb	18-Feb	Municipality	16-Feb	17-Feb	18-Feb	Municipality	16-Feb	17-Feb	18-Feb
Aammiq BG	VL	VL	VL	Ain El Tineh BG	VL	VL	VL	Ain Zebdeh	VL	VL	VL
Ana	VL	VL	VL	Aytanit	VL	VL	VL	Baaloul BG	VL	VL	VL
Bab Mareh	VL	VL	VL	Chouberqiye Aammiq	VL	VL	VL	Dakoue	VL	VL	VL
Deir Ain El-Jaouze	VL	VL	VL	Deir Tahniche	VL	VL	VL	Ghaza	VL	VL	VL
Harime El-Soughra	VL	VL	VL	Hoch Harimeh	VL	VL	VL	Jazira BG	VL	VL	VL
Jib Jennine	VL	VL	VL	Kamed-El-Laouz	VL	VL	VL	Kefraya BG	VL	VL	VL
Khiara El Atika	VL	VL	VL	Khiara	VL	VL	VL	Khirbet Qanafar	VL	VL	VL
Lala	VL	VL	VL	Lebbaya BG	VL	VL	VL	Loussa	VL	VL	VL
Machghara	VL	VL	VL	Manara (Hammara) BG	VL	VL	VL	Mansoura BG	VL	VL	VL
Marej BG	VL	VL	VL	Maydoun	VL	VL	VL	Ouaqf BG	VL	VL	VL
Qaraaoun	VL	VL	VL	Qelya	VL	VL	VL	Raouda (Istabel)	VL	VL	VL
Saghbine	VL	VL	VL	Sohmor	VL	VL	VL	Soltan Yacoub el Ara	VL	VL	VL
Souairy	VL	VL	VL	Sultan Yaacoub	VL	VL	VL	Tal Znoun	VL	VL	VL
Yehmor BG	VL	VL	VL	Zilaya	VL	VL	VL				

Zahle

Municipality	16-Feb	17-Feb	18-Feb	Municipality	16-Feb	17-Feb	18-Feb	Municipality	16-Feb	17-Feb	18-Feb
Aanjar (Haouch Mouss	VL	VL	VL	Ablah	VL	VL	VL	Ain Kfarzabad	VL	VL	VL
Ali-El-Nahri	VL	VL	VL	Bar Elias	VL	VL	VL	Bouarej	VL	VL	VL
Cheberqiyet Tabet	VL	VL	VL	Chtaura	VL	VL	VL	Deir El Ghazal	VL	VL	VL
Delhamiyet Zahle	VL	VL	VL	Ferzol	VL	VL	VL	Haouch El-Ghanam	VL	VL	VL
Haouch Es-Siyadeh	VL	VL	VL	Haouch Hala	VL	VL	VL	Haouch Mandara	VL	VL	VL

Haouch Qayssar	VL	VL	VL	Hezerta	VL	VL	VL	Hosh Moussa	VL	VL	VL
Jdita	VL	VL	VL	Kfarzabad	VL	VL	VL	Ksara	VL	VL	VL
Majdel Aanjar	VL	VL	VL	Makssi	VL	VL	VL	Massa	VL	VL	VL
Mazraat Er-Remtaniye	VL	VL	VL	Mrayjat Zahle	VL	VL	VL	Mzaraa Zahle	VL	VL	VL
Nabi Ayla	VL	VL	VL	Nasriyet Rizk	VL	VL	VL	Nasriyet Zahle	VL	VL	VL
Niha Zahle	VL	VL	VL	Ouadi Ed-Deloum	VL	VL	VL	Ouadi El-Arayech	VL	VL	VL
Qaa El Rim	VL	VL	VL	Qab Elias	VL	VL	VL	Qousaya	VL	VL	VL
Rhit	VL	VL	VL	Riyak	VL	VL	VL	Saadnayel	VL	VL	VL
Taal El-Akhdar	VL	VL	VL	Taalbeya	VL	VL	VL	Taanayel	VL	VL	VL
Talamara	VL	VL	VL	Tcheflik Edde Haouch	VL	VL	VL	Tcheflik Qiqano	VL	VL	VL
Terbol Zahle	VL	VL	VL	Touaite Zahle	VL	VL	VL	Zahle Aradi	VL	VL	VL
Zahle El-Berbara	VL	VL	VL	Zahle El-Maallaqa	VL	VL	VL	Zahle El-Midane	VL	VL	VL
Zahle Er-Rassiye	VL	VL	VL	Zahle Haouch El-Ouma	VL	VL	VL	Zahle Haouch El-Ouma	VL	VL	VL
Zahle Haouch Ez-Zara	VL	VL	VL	Zahle Maalaqa Aradi	VL	VL	VL	Zahle Mar Antonios	VL	VL	VL
Zahle Mar Elias	VL	VL	VL	Zahle Mar Gerios	VL	VL	VL	Zahle Saydet En-Naja	VL	VL	VL
Zebdoul	VL	VL	VL								

Rachaiya

Municipality	16-Feb	17-Feb	18-Feb	Municipality	16-Feb	17-Feb	18-Feb	Municipality	16-Feb	17-Feb	18-Feb
Ain Arab Rachaiya	VL	VL	VL	Ain Ata	VL	VL	VL	Ain Harche	VL	VL	VL
Aqabe Rachaya	VL	VL	VL	Ayha	VL	VL	VL	Ayta El Fokhar	VL	VL	VL
Bakifa Rachaya	VL	VL	VL	Bakka	VL	VL	VL	Beit Lahya	VL	VL	VL
Bireh Rachaiya	VL	VL	VL	Daheer El Ahmar	VL	VL	VL	Deir El-Achayer	VL	VL	VL
Heloua Rachaiya	VL	VL	VL	Hoch El Qannabeh Rac	VL	VL	VL	Kaoukaba Bou Arab	VL	VL	VL
Kfar Danis	VL	VL	VL	Kfar Mechki	VL	VL	VL	Kfar Qouq	VL	VL	VL
Kherbet Rouha	VL	VL	VL	Majdel Balhiss	VL	VL	VL	Mdoukha	VL	VL	VL
Mhaydseh Rachaiya	VL	VL	VL	Nabi Safa	VL	VL	VL	Rachaiya	VL	VL	VL
Rafid Rachaiya	VL	VL	VL	Selsata (Mazraat Dei	VL	VL	VL	Tannoura	VL	VL	VL
Yanta	VL	VL	VL								

Beyrouth

Beyrouth

Municipality	16-Feb	17-Feb	18-Feb	Municipality	16-Feb	17-Feb	18-Feb	Municipality	16-Feb	17-Feb	18-Feb
Achrafieh	VL	VL	VL	Ain el-Mreisse	VL	VL	VL	Bachoura	VL	VL	VL
Beirut Central Distr	VL	VL	VL	Marfai	VL	VL	VL	Mazraa	VL	VL	VL
Medaouar	VL	VL	VL	Minet el-Hosn	VL	VL	VL	Mwssaitbeh	VL	VL	VL
Ras Beirut	VL	VL	VL	Rmeil	VL	VL	VL	Saifi	VL	VL	VL
Zqaq el-Blat	VL	VL	VL								