

Lebanon Fire Risk Bulletin



CIVIL DEDEFENCE

Refer to cadast table condition.

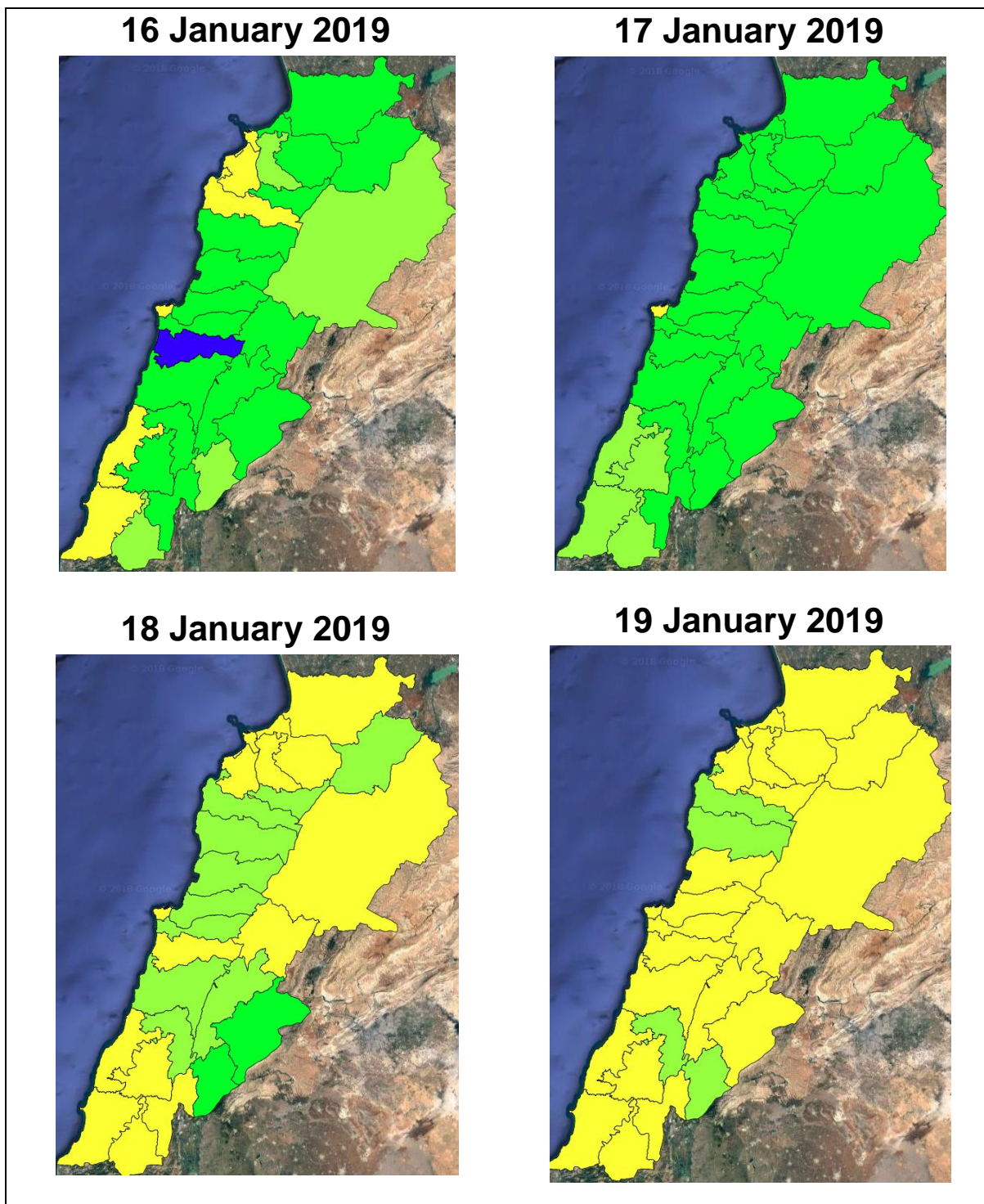
Please note that the indicated temperature is at 2 meters height from the ground.

General description of potential fire risk situation

Symbol	Level of risk	Meaning and actions
VL	Very low	Very low fire risk. Controlled burning operations can be hardly executed due to high fuel moisture content. Normally wildfires self-extinguish.
L	Low	Low fire risk. Controlled burning operations can be executed with a reasonable degree of safety.
ML	Medium low	Medium-low fire risk. Controlled burning operations can be executed in safety conditions. All the fires need to be extinguished.
M	Medium	Medium fire risk. Controlled burning operations would be avoided. All the fires need to be very well extinguished.
M	Medium high	Controlled burning is not recommended. Open flame will start fires. Cured grasslands and forest litter will burn readily. Spread is moderate in forests and fast in exposed areas. Patrolling and monitoring is suggested. Fight fires with direct attack and all available resources.
H	High	Ignition can occur easily with fast spread in grass, shrubs and forests. Fires will be very hot with crowning and short to medium spotting. Direct attack on the head may not be possible requiring indirect methods on flanks. Patrolling and monitoring the territory is highly suggested.
E	Extreme	Ignition can occur also from sparks. Fires will be extremely hot with fast rate of spread. Control may not be possible during day due to long range spotting and crowning. Suppression forces should limit efforts to limiting lateral spread. Damage potential total. Patrolling and monitoring the territory is highly suggested.

Beirut, 17 January 2019

FIRE RISK INDEX

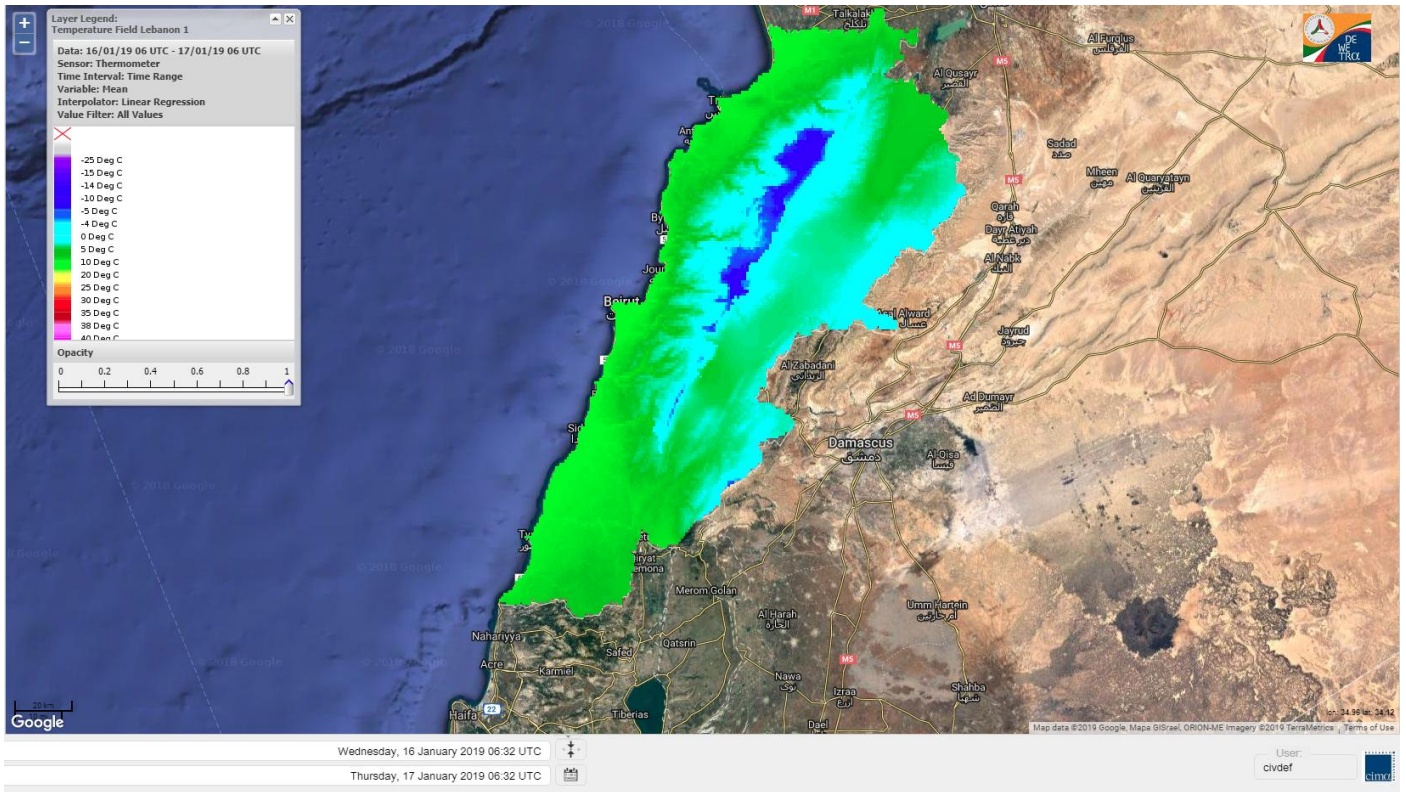


Layer Legend:
Lebanon Wildfire Risk Index 1

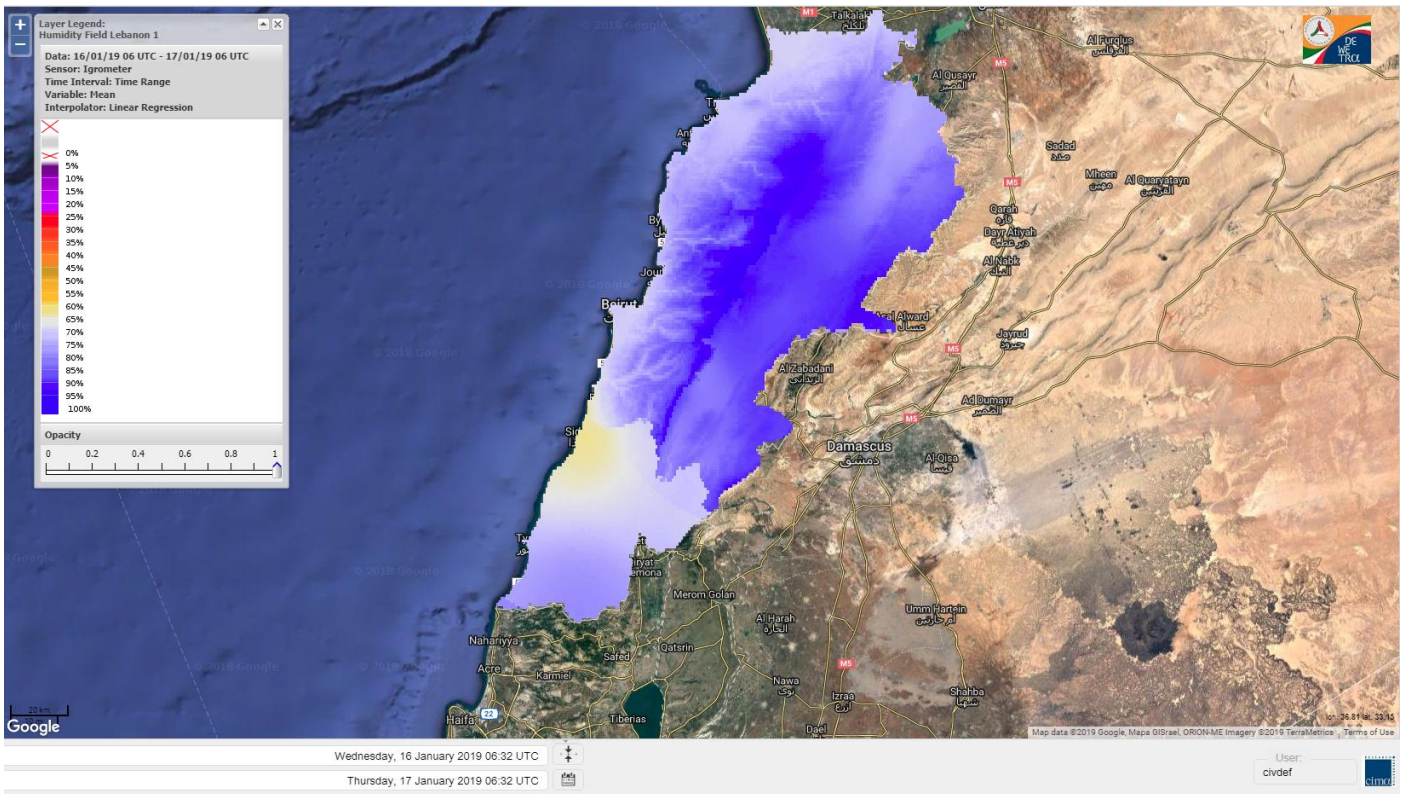
Data: Run: 17/01/2019 00:00. Forecast for 17
Model: RISICO for the Republic of Lebanon
Variable: Fire Weather Index
Spatial Resolution: Caza

- VERY LOW
- LOW
- MEDIUM-LOW
- MEDIUM
- MEDIUM-HIGH
- HIGH
- EXTREME

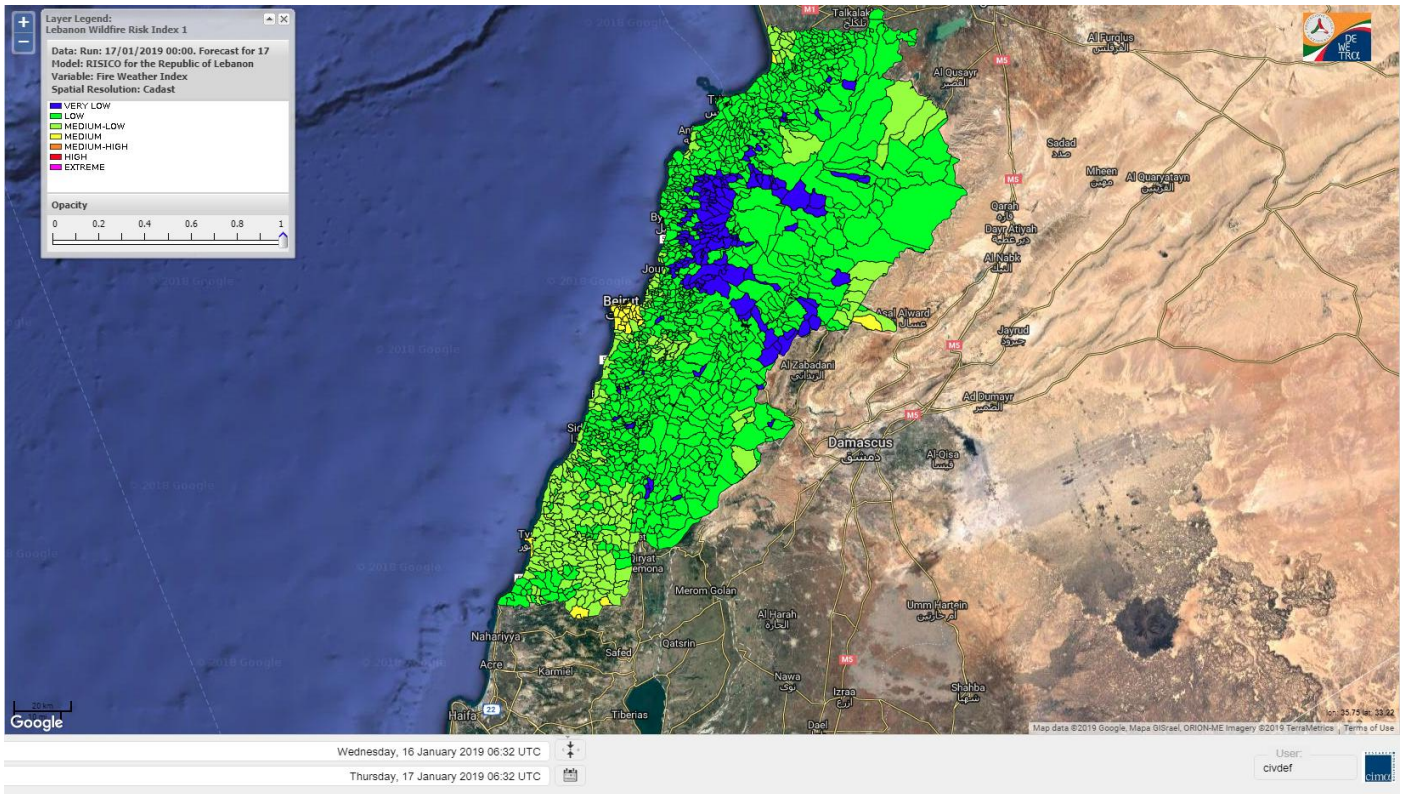
Lebanon temperature for Lebanon 17 January 2019



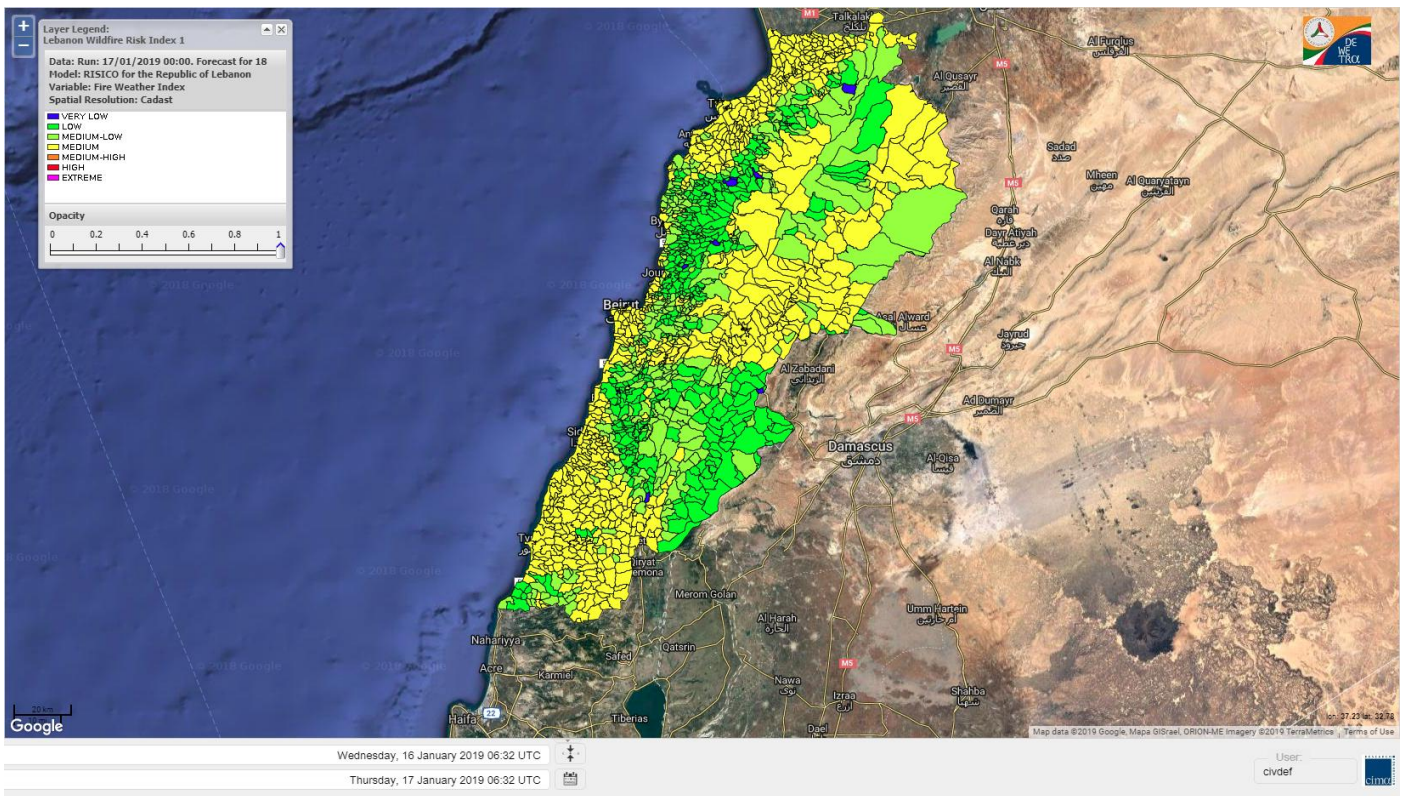
Lebanon humidity for Lebanon 17 January 2019



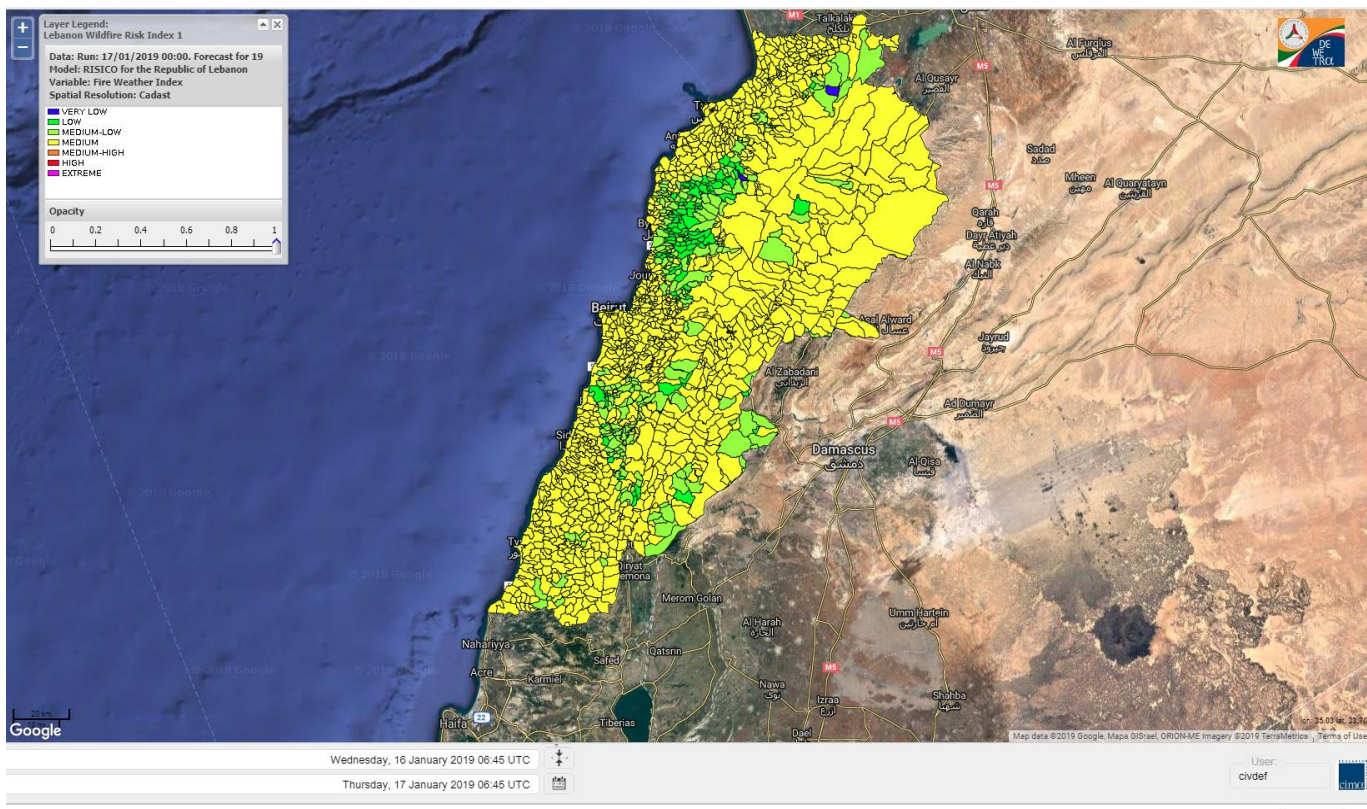
Lebanon for 17 January 2019



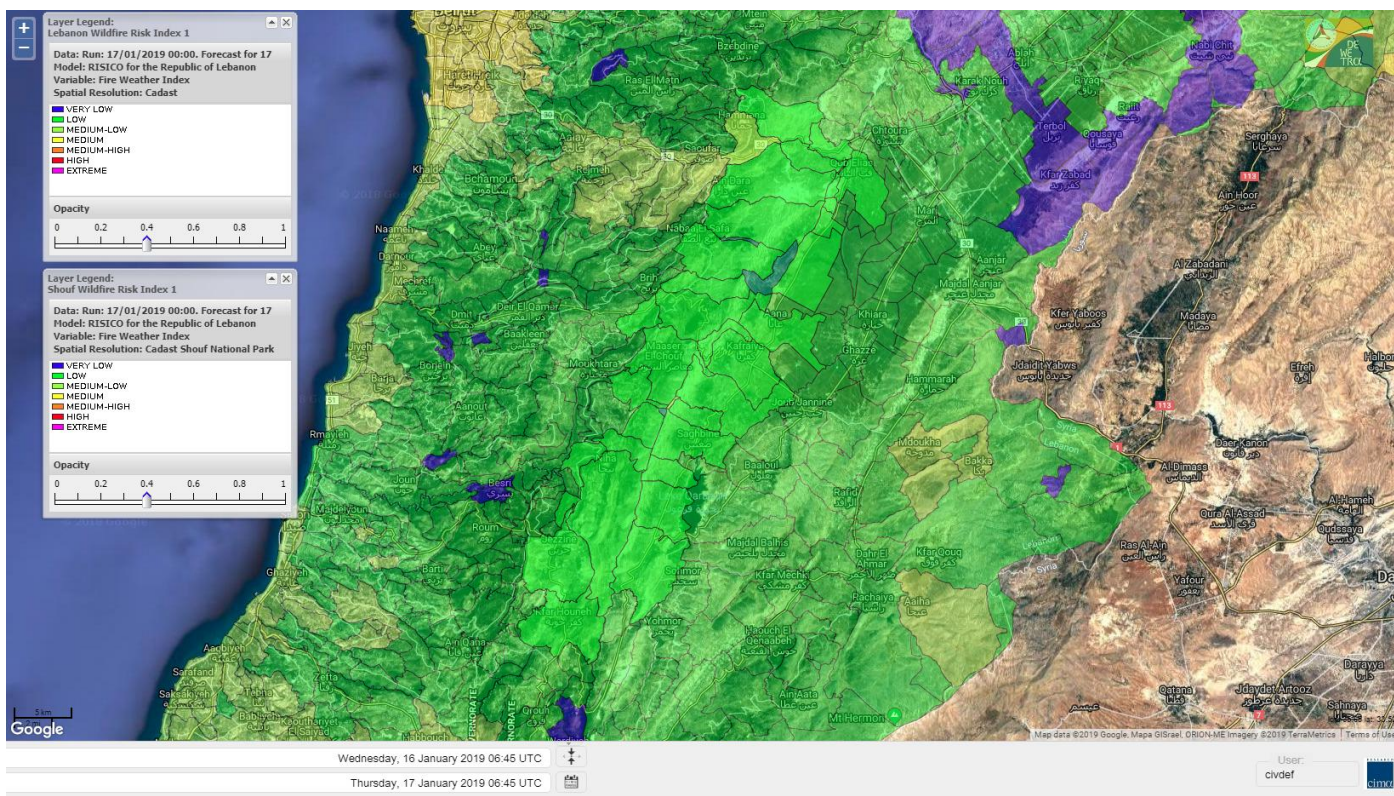
Lebanon for 18 January 2019



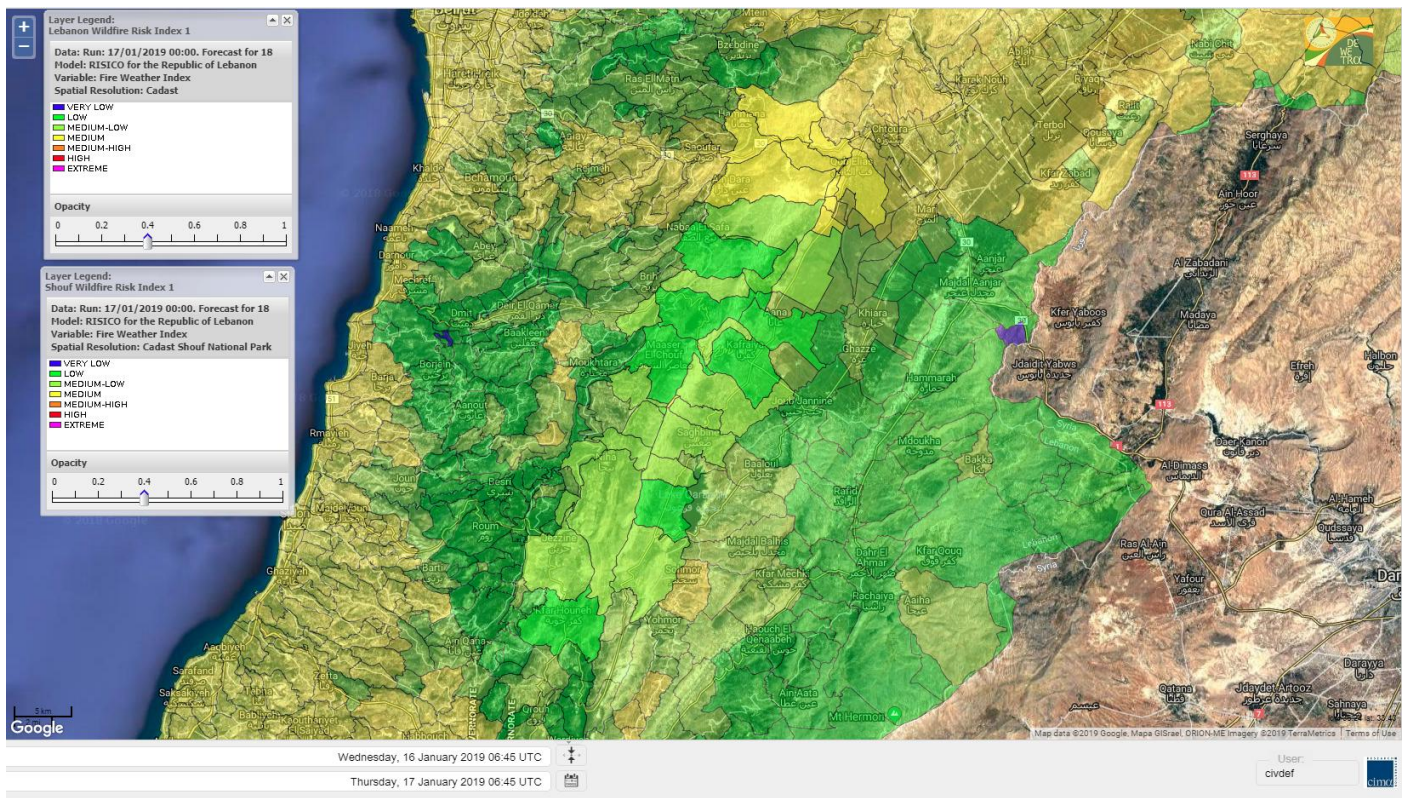
Lebanon for 19 January 2019



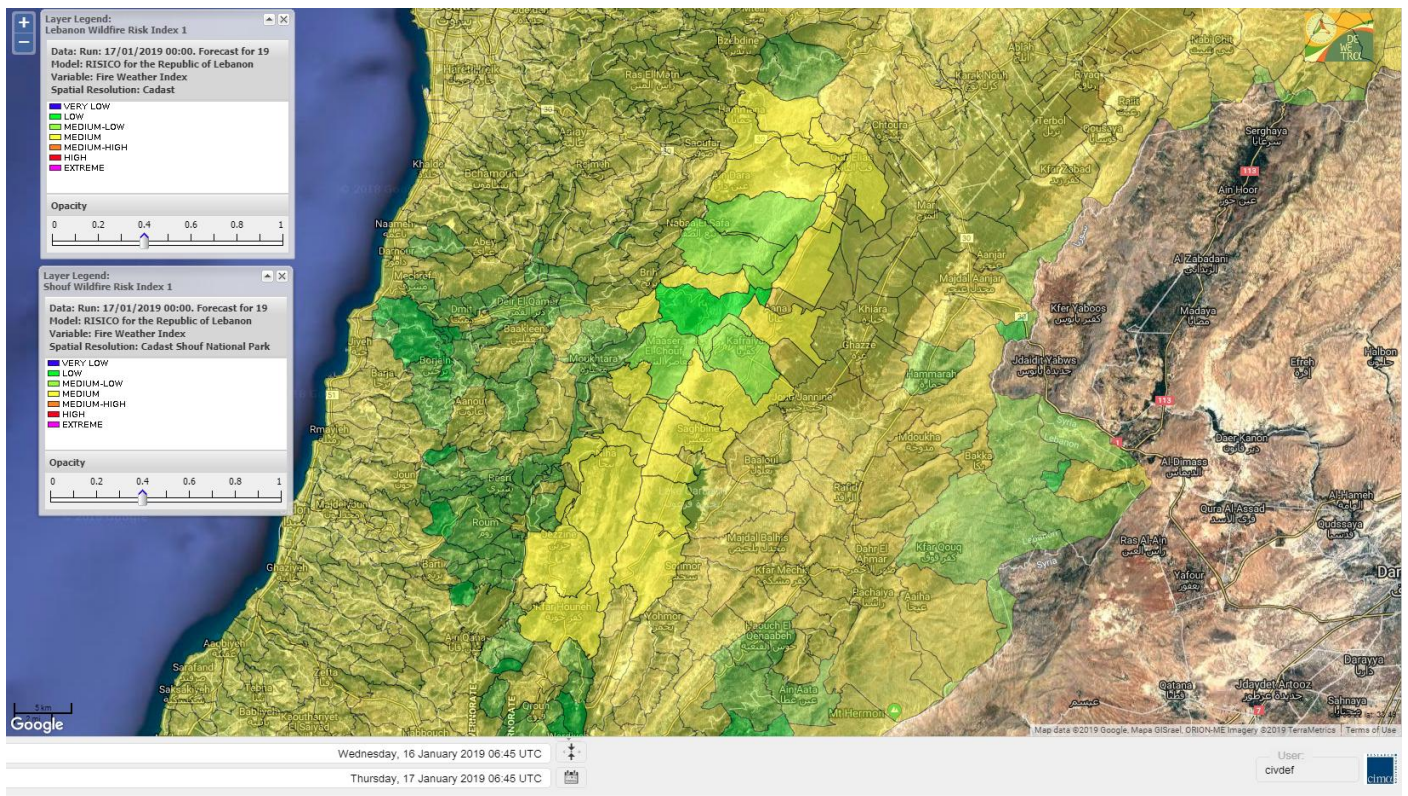
Shouf Biosphere Reserve Forecast for 17 January 2019



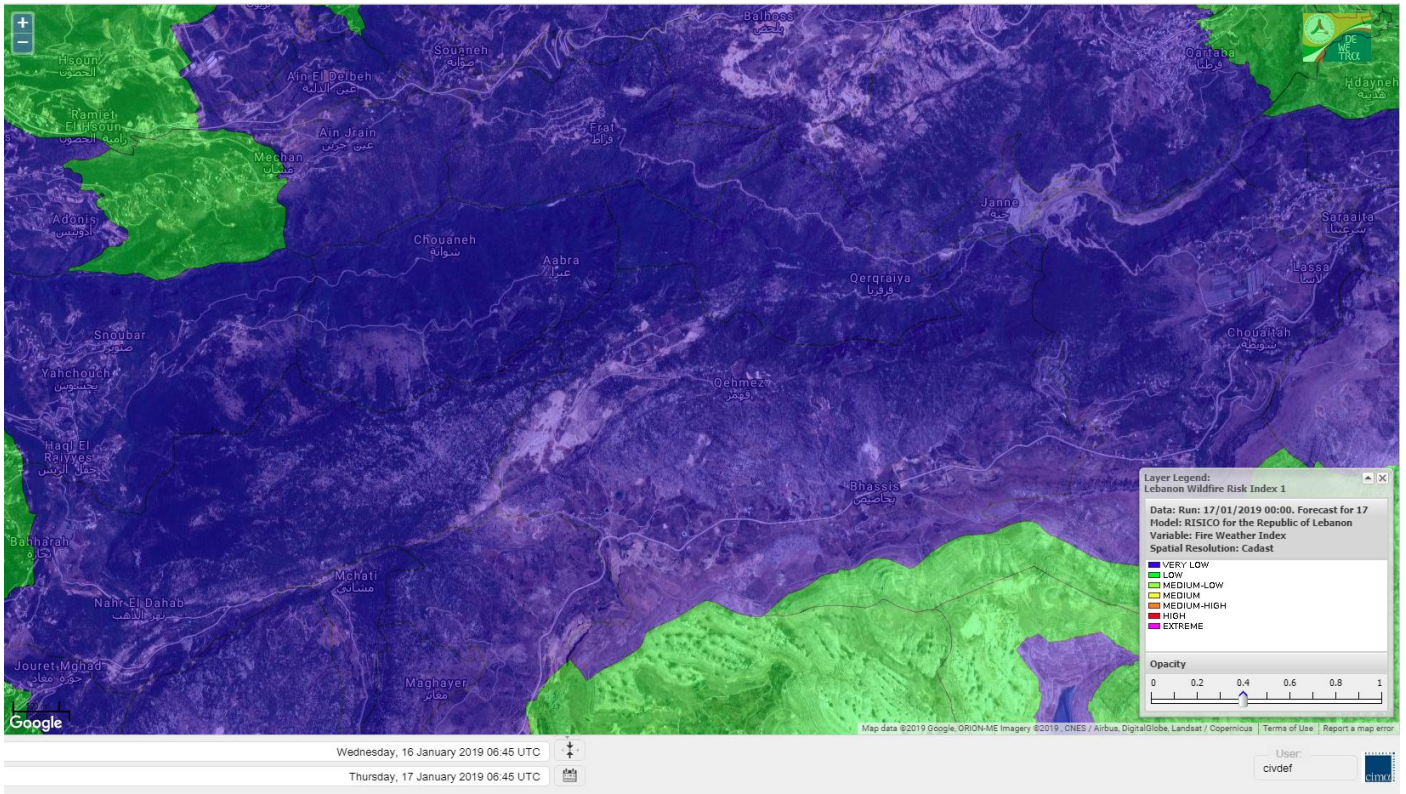
Shouf Biosphere Reserve Forecast for 18 January 2019



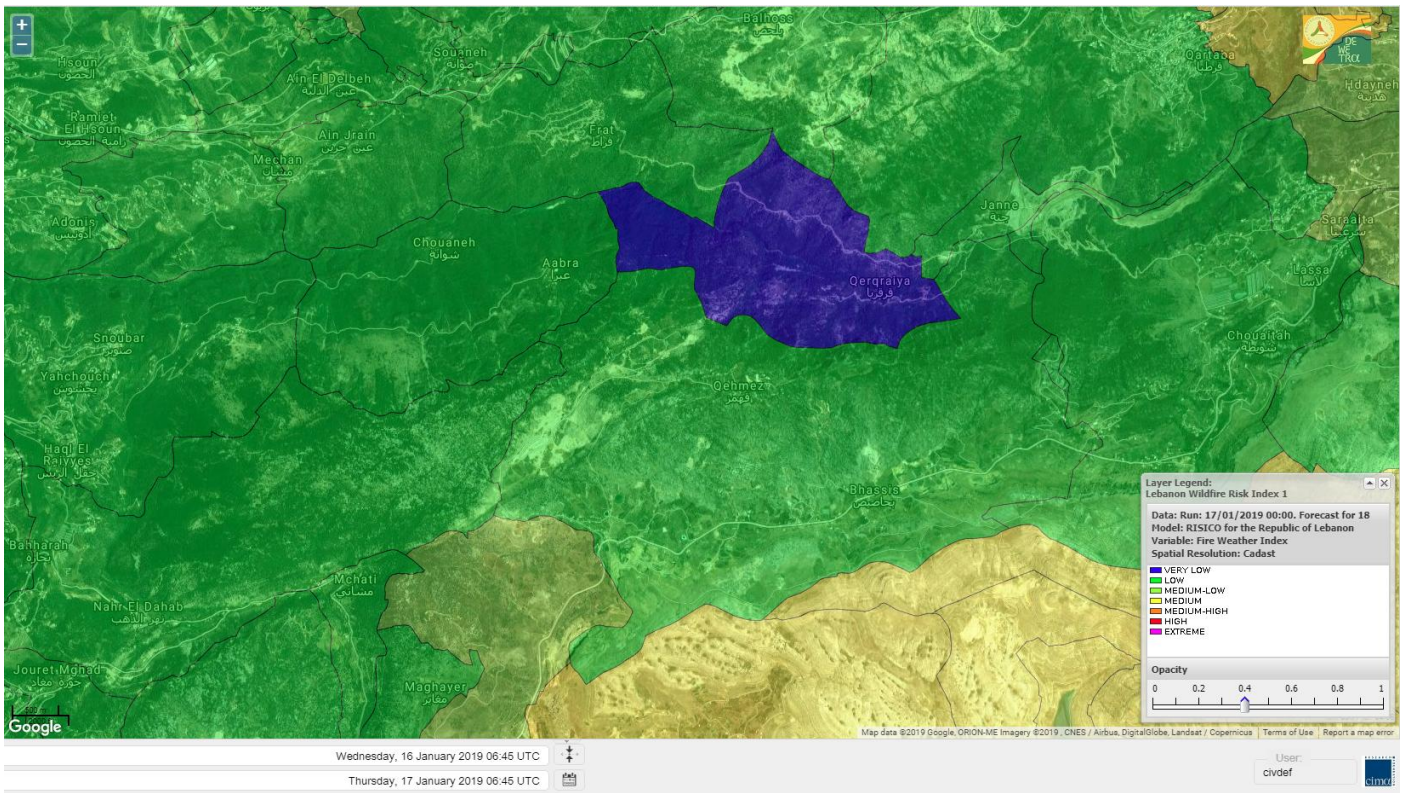
Shouf Biosphere Reserve Forecast for 19 January 2019



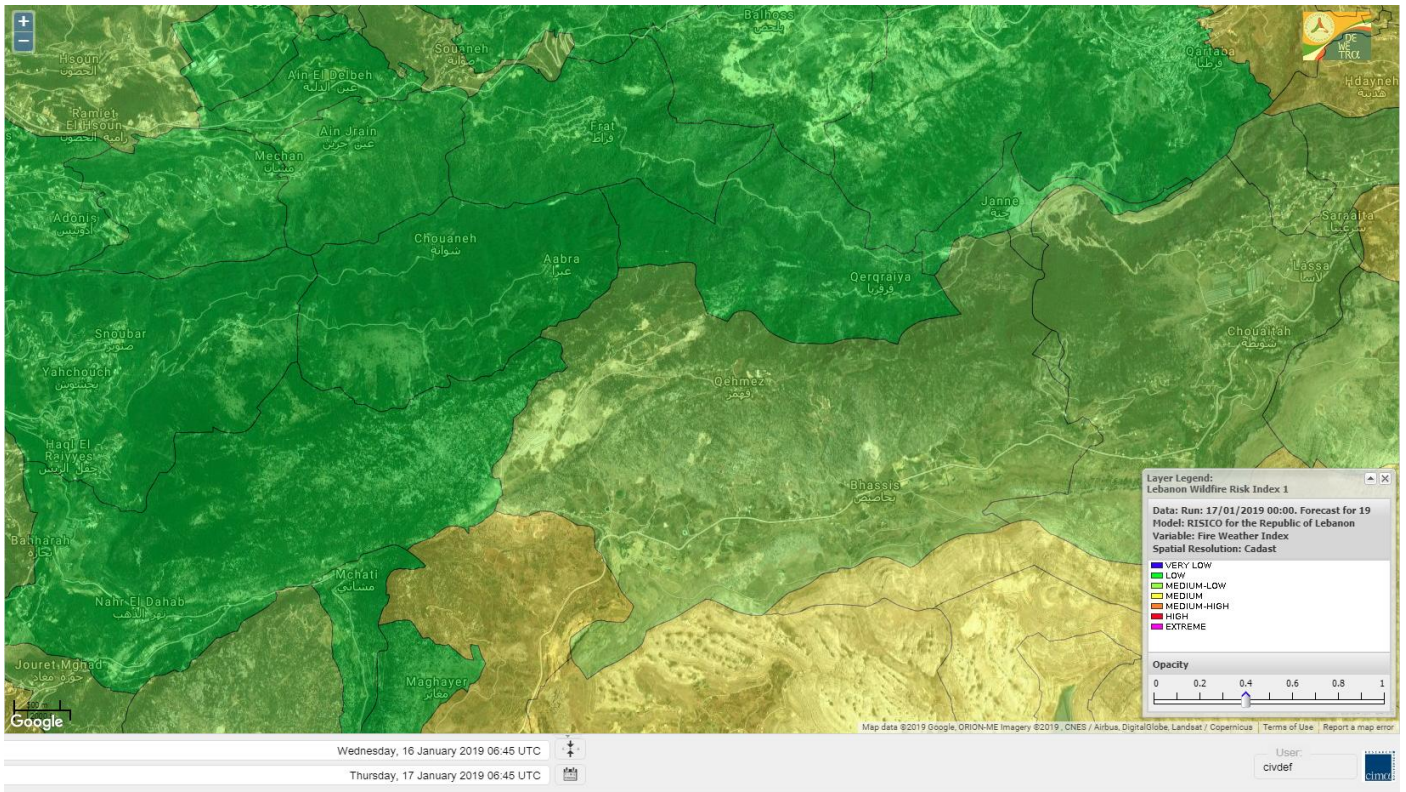
Jabal Moussa Reserve Forecast for 17 January 2019



Jabal Moussa Reserve Forecast for 18 January 2019



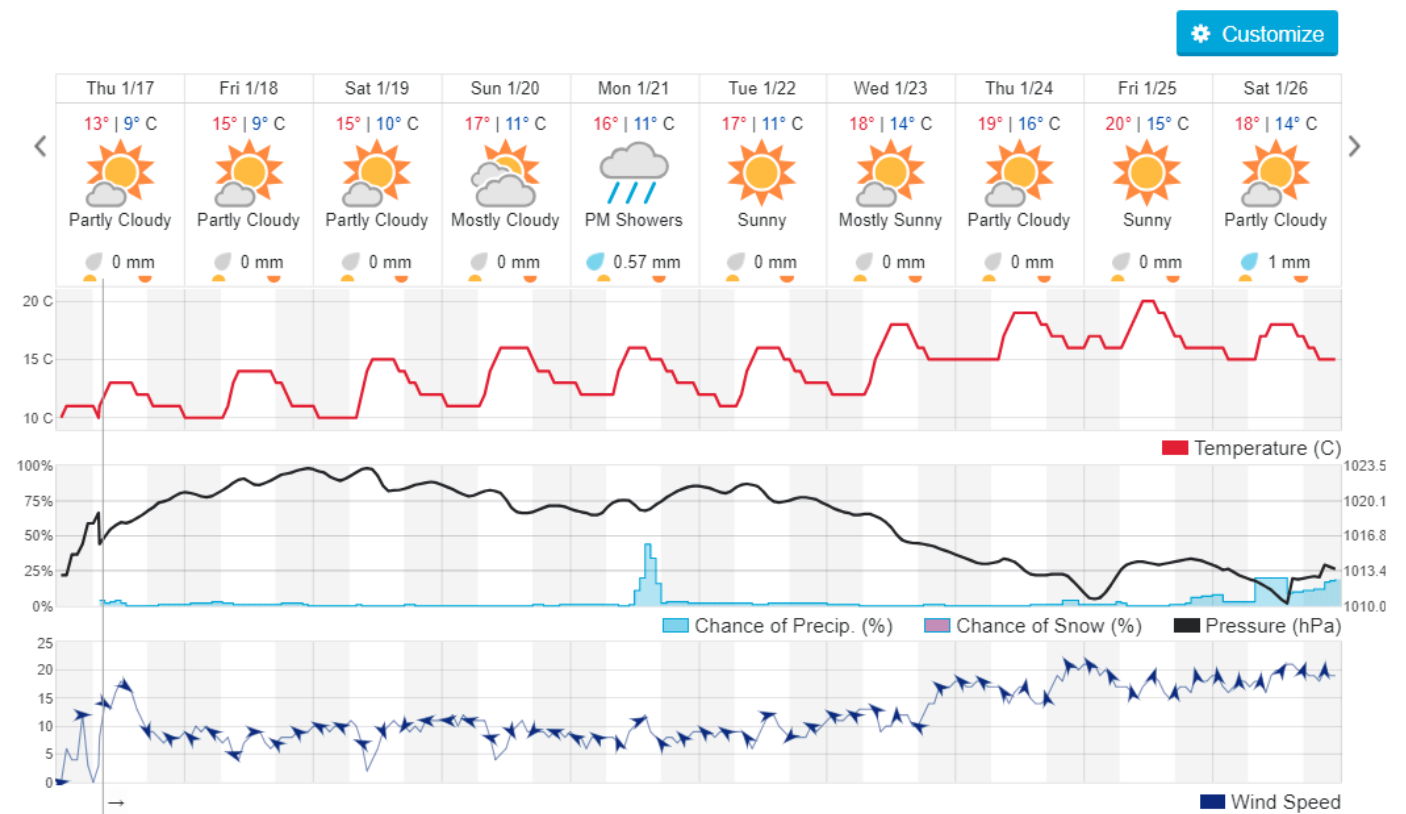
Jabal Moussa Reserve Forecast for 19 January 2019



Beirut, Lebanon

11° ACHRAFIEH, RIZK STATION | REPORT | CHANGE

TODAY HOURLY **10-DAY** CALENDAR HISTORY WUNDERMAP



Nord

Koura

Municipality	17-Jan	18-Jan	19-Jan	Municipality	17-Jan	18-Jan	19-Jan	Municipality	17-Jan	18-Jan	19-Jan
Aaba	L	M	M	Afsaddiq	L	M	M	Ain Ekrine	L	M	M
Amioun	L	M	M	Anfeh	ML	M	M	Badbhoun	L	M	M
Barghoun	L	M	M	Barsa	L	M	M	Batroumine	L	M	M
Bdebba	L	M	M	Bechmizine	L	M	M	Bednayel El-Koura	L	ML	M
Bhabbouch El-Koura	L	M	M	Bkeftine	L	M	M	Bnehran	L	ML	ML
Bqaiaa El-Koura	L	M	M	Bsarma	L	M	M	Btaaboura	L	M	M
Bterram	L	M	M	Btouratij	L	M	M	Bziza	L	M	M
Dar Beehtar	L	M	M	Dar Chmezzine	L	M	M	Deddeh	L	M	M
Deir El-Balamand	L	ML	M	Fih	L	M	M	Hraiche	L	M	M
Ijdaabrine	L	ML	M	Kaftoun	L	M	M	Kefraya El-Koura	ML	M	M
Kfarakka	L	M	M	Kfarhata	L	ML	M	Kfarhazir	L	M	M
Kfarkahel	L	M	M	Kfarsaroun	L	M	M	Kosba	L	M	M
Mejdel el-Koura	L	ML	ML	Nakhle	L	M	M	Qalhat	L	ML	M
Ras Masqa	L	M	M	Rechdibbine	L	M	M	Zakroun	L	M	M
Zgharta El-Mtaouile	L	L	ML								

Bcharre

Municipality	17-Jan	18-Jan	19-Jan	Municipality	17-Jan	18-Jan	19-Jan	Municipality	17-Jan	18-Jan	19-Jan
Aabdine	L	ML	ML	Bane	L	M	M	Barhelioun	L	L	L
Bazouone	VL	ML	M	Becharre	L	M	M	Beit Menzer	L	L	ML
Billa	L	ML	ML	Blaouza	L	M	M	Bqaa Kafra	VL	M	M
Bqerqacha	VL	ML	M	Breissat	VL	L	ML	Dimane	VL	L	ML
Hadath El Jobbeh	VL	L	ML	Hadchit	L	ML	ML	Hasroun	VL	ML	M
Mazraat Aassaf	VL	VL	L	Mazraat Bani Saab	VL	L	L	Mchaa El-Jobbeh	VL	M	M
Metrit	L	ML	ML	Moghr El-Ahoual	L	ML	ML	Ouadi Qannoubine	VL	VL	VL
Qanat	L	L	L	Qnayouer	VL	L	L	Tourza	L	L	ML

Batroun

Municipality	17-Jan	18-Jan	19-Jan	Municipality	17-Jan	18-Jan	19-Jan	Municipality	17-Jan	18-Jan	19-Jan
Aabrine	L	L	M	Aalali	VL	L	ML	Aartiz	VL	L	L
Abdelli	VL	L	L	Ajdabra	L	L	ML	Assia	VL	L	L
Basbina	L	M	M	Batroun	L	M	M	Bcheleh	VL	L	ML
Bechtoudar	VL	L	L	Beit Chlala	VL	L	L	Beit Kassab	VL	L	L
Bijdarfil	L	M	M	Bqesmaya	L	L	M	Chatine	L	ML	ML
Chebtin	VL	L	ML	Chekka	ML	M	M	Daael	VL	L	L
Dahr Abi Yaghi	VL	L	L	Daraya El-Batroun	L	M	M	Deir Billa	VL	L	L
Deir Kfifane	L	ML	M	Deir Mar Youhanna EL	VL	L	L	Deir Mar Youssef Jra	L	L	ML
Douma	VL	L	ML	Douq	L	L	L	Eddeh El-Batroun	L	ML	ML
Ftahat El-Batroun	VL	L	L	Ghouma	L	ML	ML	Hadtoun	VL	L	L
Hamat	L	ML	M	Harbouna	VL	L	L	Hardine	VL	VL	L
Helta	VL	L	L	Hery	ML	M	M	Jebila	VL	L	L
Jrabta El-Batroun	L	ML	ML	Jrane El-Batroun	L	M	M	Kfar Aabida	L	ML	M
Kfar Halda	VL	L	L	Kfarb Shlaimane	VL	L	L	Kfarhatna	L	L	ML
Kfarhay	L	M	M	Kfarhelos	L	L	M	Kfifane	L	M	M

Kfour El Arabi	L	L	ML	Koubba	L	M	M	Kour	L	ML	ML
Mar Mama	VL	L	L	Masrah	VL	L	L	Mehmarch	VL	L	ML
Mrah Chdid	L	L	ML	Mrah El Ziyat	L	ML	ML	Mrah El-Hajj	VL	VL	L
Nahle El-Batroun	VL	L	ML	Niha El-Batroun	L	L	ML	Oujah El-Hajjar	L	ML	M
Ouata Houb	L	L	ML	Qatnaaoun	L	ML	M	Racha	VL	L	ML
Rachana	L	L	ML	Rachkida	L	ML	M	Ram El-Batroun	VL	L	L
Ras Nahhach	L	ML	M	Selaata	L	M	M	Sghar	L	ML	ML
Smar Jbayl	L	ML	ML	Sourat El-Batroun	VL	L	L	Tannourine El-Faouqa	L	M	M
Tannourine Et-Tahta	L	L	L	Thoum	L	ML	M	Toula El-Batroun	L	L	ML
Zan	VL	L	ML								

Zgharta

Municipality	17-Jan	18-Jan	19-Jan	Municipality	17-Jan	18-Jan	19-Jan	Municipality	17-Jan	18-Jan	19-Jan
Aachach	L	M	M	Aalma	L	M	M	Aarde	L	M	M
Aintourine	L	ML	M	Arabet Qozhaya	L	L	L	Arde	L	M	M
Arjis	L	M	M	Asnoun	L	M	M	Ayto	VL	L	ML
Basloukit	L	M	M	Bchannine	L	M	M	Besebeel	L	M	M
Bhairat Toula	VL	ML	M	Bnachee	L	M	M	Boussit	L	M	M
Danha	L	M	M	Daraiya Zgharta	L	M	M	Deir Jdeide	L	M	M
Ehden	L	M	M	Halan	L	M	M	Hariq Zgharta	L	M	M
Houakir	L	ML	M	Hraiqis	L	M	M	laal	L	M	M
Ijbaa	L	ML	M	Karm Saddeh	L	L	L	Kfarchakhna	L	M	M
Kfardlaqous	L	M	M	Kfarfou	L	M	M	Kfarhata Zgharta	L	M	M
Kfarhoura	L	M	M	Kfarsghab	L	M	M	Kfaryachit	L	M	M
Kfarzaina	L	M	M	Khaldiye	L	M	M	Mazraat Ajbeaa	L	M	M
Mazraat Et-Teffah	VL	L	M	Mazraat Jneid	L	M	M	Mejdlaiya Zgharta	L	M	M
Merh Kfarsghab	L	M	M	Miryata	L	M	M	Miziara	L	L	ML
Mzraat Kefraya	L	M	M	Qorah Bach	L	M	M	Rachiine	L	M	M
Ras Kifa	L	ML	M	Sakhra	L	M	M	Sebhel Zgharta	L	ML	M
Serhel	VL	L	L	Tallet Zgharta	L	M	M	Toula Zgharta	L	L	M
Zgharta	L	M	M								

Minieh-Denniye

Municipality	17-Jan	18-Jan	19-Jan	Municipality	17-Jan	18-Jan	19-Jan	Municipality	17-Jan	18-Jan	19-Jan
Aasaymout	L	L	M	Aaymar	L	ML	M	Aazki	L	M	M
Ain El-Tineh-Miniyeh	L	L	ML	Assoun	L	ML	M	Bakhaaoun	L	ML	ML
Bchennata	L	M	M	Bechehhara	L	L	ML	Beddawi	L	M	M
Behouaita	L	L	M	Beit El Foqss	L	L	M	Beit Haouik	ML	ML	M
Beit Zoud	L	L	M	Bekaasafrine	ML	M	M	Borj El Yahoudiyeh	L	M	M
Bqarsouna	L	L	M	Btermaz	L	L	M	Debaael	L	L	M
Deir Ammar	L	M	M	Deir Nbouh	L	ML	M	Haouaret-Miniyeh	L	ML	M
Haql el Azimeh	L	L	ML	Harf El Siyad	L	L	L	Hazmiye-Miniyeh	L	L	ML
Izal	L	ML	M	Jarjour	VL	L	ML	Jayroun	L	L	M
Kahf El-Malloul	L	L	ML	Karm El-Moher	L	ML	M	Kfar Binine	L	ML	M
Kfarchalane	L	ML	ML	Kfarhabou	L	M	M	Kharroub-Miniyeh	L	ML	M
Mazraat El-Kreme	VL	L	ML	Mazraat Ketrane	L	L	M	Merkebta	L	M	M
Minyeh	L	M	M	Mrah El Sfirat	VL	L	ML	Mrah Sraj	L	L	ML
Mrebbine	L	M	M	Nabi Youcheaa	L	M	M	Nemrine	L	ML	M

Qarhaiya	ML	ML	M	Qarne	L	ML	M	Qarsita	L	L	M
Qattineh-Miniyeh	VL	L	ML	Qemmamine	VL	ML	M	Qraine	L	L	ML
Raouda-Aadoua	L	M	M	Rihaniyet-Miniyeh	L	M	M	Sfireh	L	L	M
Sir Ed-Danniyeh	L	L	M	Tarane	VL	L	M	Terbol-Miniyeh	L	M	M
Zaghartaghriine	L	ML	M	Zouq Bhannine	L	M	M				

Nabatiye

Nabatiye

Municipality	17-Jan	18-Jan	19-Jan	Municipality	17-Jan	18-Jan	19-Jan	Municipality	17-Jan	18-Jan	19-Jan
Aabba	L	M	M	Aazzi	L	M	M	Adchit El-Chqif	ML	M	M
Ain Bou Swar	L	ML	M	Ain Kana	L	ML	M	Ali El-TaHER	L	M	M
Ansar	ML	M	M	Arab Salim	L	M	M	Arnoun	ML	M	M
Bfaroue	L	ML	M	Breyqaah	ML	M	M	Charqiyeh	ML	M	M
Choukine	ML	M	M	Deir El Zahrani	L	M	M	Doueir El-Nabatiyeh	ML	M	M
Habbouch El-Nabatiye	ML	M	M	Hamra El-Nabatiyeh	ML	M	M	Harouf El-Nabatiyeh	ML	M	M
Hmaile	L	ML	M	Houmin El Faouqa	L	M	M	Houmin El Tahta	ML	M	M
Jarjough	L	ML	M	Jbaah El-Nabatiyeh	L	L	M	Jebchit	L	M	M
Kfar Djal El-Nabatiy	ML	M	M	Kfar Remmane	ML	M	M	Kfar Sir	ML	M	M
Kfar Tebnit	ML	M	M	Kfarfila	L	ML	M	Kfour El-Nabatieh	L	M	M
Mayfadoun	ML	M	M	Mazraat Bsaffour	L	M	M	Mazraat Chalbaal	L	M	M
Mazraat Dmoul	ML	M	M	Mazraat El Khreibeh	L	M	M	Mazraat El-Bayad El-	ML	M	M
Mazraat Kfarjaouz	ML	M	M	Mazraat Qalaat Meiss	L	M	M	Nabatiyeh El-Fawka	ML	M	M
Nabatiyeh Et-Tahta	ML	M	M	Namiriyeh	L	M	M	Qaaqaaiyet El Jisr	ML	M	M
Qossabeh El-Nabatiy	ML	M	M	Roumine	L	M	M	Sarba El-Nabatieh	L	ML	M
Sir El-Gharbiyeh	ML	M	M	Toul	ML	M	M	Yehmor El-Nabatiyeh	ML	M	M
Zaoutar El Charqiyeh	ML	M	M	Zaoutar El-Gharbiyeh	ML	M	M	Zebdine El-Nabatiyeh	ML	M	M
Zefta	L	M	M								

Hasbaiya

Municipality	17-Jan	18-Jan	19-Jan	Municipality	17-Jan	18-Jan	19-Jan	Municipality	17-Jan	18-Jan	19-Jan
Aain Jarfa	VL	L	ML	Abou Qamha	L	ML	M	Ain Qania	L	L	M
Bourghos	L	ML	M	Chebaa	L	L	M	Chouaya Hasbaya	L	L	M
Dellafeh	L	M	M	Fardiss Hasbaiya	L	ML	M	Hasbaya	L	ML	M
Hbariyeh	L	L	ML	Kaoukaba Hasbaiya	L	M	M	Kfar Chouba	L	L	ML
Kfar Hamam	L	L	ML	Kfeir El-Zait	L	L	ML	Khalwat Hasbaya	L	L	L
Khreibet Hasbaiya	L	ML	M	Majidiyeh Hasbaiya	L	ML	M	Marj Ez-Zhour (Haouc	L	L	ML
Meri	L	ML	M	Mimass	L	ML	M	Rachaiya El-Fokhar	L	ML	ML
Salaiyeb	L	M	M								

Marjayoun

Municipality	17-Jan	18-Jan	19-Jan	Municipality	17-Jan	18-Jan	19-Jan	Municipality	17-Jan	18-Jan	19-Jan
Aalmane Marjaayoun	L	ML	M	Aamra	L	M	M	Adayseh Marjaayoun	ML	M	M
Adchit El-Koussair	ML	M	M	Ain Aarab Marjaayoun	L	M	M	Bani Haiyann	L	M	M
Blatt Marjaayoun	L	M	M	Blida	ML	M	M	Borj El-Moulouk	L	M	M
Boueyda Marjaayoun	L	ML	M	Deir Mimass	L	M	M	Deir Siriane	ML	M	M
Dibbine	L	M	M	Ebel El Saqi	L	M	M	Houla	L	M	M
Houra	L	M	M	Kfar Kila	ML	M	M	Khiam Marjaayoun	L	M	M

Klayaa	L	M	M	Majdel Selem	ML	M	M	Marjaayoun	L	M	M
Markaba	L	M	M	Mays El-Jabal	ML	M	M	Mazraat Doumiat	ML	M	M
Mazraat Sarada	L	M	M	Mhaibib	ML	M	M	Qabrikha	L	M	M
Qantara	ML	M	M	Rab El-Thalathine	ML	M	M	Saouaneh Marjayoun	ML	M	M
Talloussa	L	ML	ML	Taybeh Matjaayoun	ML	M	M	Touline	L	ML	M

Bent Jbail

Municipality	17-Jan	18-Jan	19-Jan	Municipality	17-Jan	18-Jan	19-Jan	Municipality	17-Jan	18-Jan	19-Jan
Ain-Ebel	ML	M	M	Aitaroun	ML	M	M	Aynata Bint Jbeil	ML	M	M
Ayta El-Chaeb	ML	ML	M	Ayta El-Jabal	ML	M	M	Beit Lif	L	ML	M
Beit Yahoun	ML	M	M	Bint Jbeil	ML	M	M	Borj Qalaway	ML	M	M
Braachit	ML	M	M	Chakra	ML	M	M	Debel	ML	M	M
Deir Antar	ML	M	M	Froun	L	M	M	Ghandouriyeh Bint Jb	ML	M	M
Hanine	ML	M	M	Hariss	ML	M	M	Hdatha	ML	M	M
Jmeymeh	ML	M	M	Kafra Bint Jbeil	L	ML	ML	Kfar Dounine	ML	M	M
Khirbet Selm	ML	M	M	Kounine	ML	M	M	Maroun El Ras	M	M	M
Qalaway	ML	M	M	Qaouzah	L	ML	ML	Qatmoun	M	M	M
Ramya Bint Jbeil	L	ML	M	Rchaf	L	ML	M	Rmeich	M	M	M
Safad Al Battikh	ML	M	M	Salhaneh	L	L	ML	Serbine	ML	M	M
Sultanieh Bint Jbeil	ML	M	M	Tibnine	ML	M	M	Tiri	ML	M	M
Yaroun	ML	M	M	Yater	ML	M	M				

Mont Liban

Jbail

Municipality	17-Jan	18-Jan	19-Jan	Municipality	17-Jan	18-Jan	19-Jan	Municipality	17-Jan	18-Jan	19-Jan
Aabeydat	L	L	L	Aalita	L	L	L	Aamchit	L	M	M
Aarab El-Lahib	L	M	M	Aarasta	VL	L	ML	Adonis Jbeil	VL	L	L
Afqa Jbeil	VL	L	ML	Ain El Delbeh Jbeil	VL	L	L	Ain El-Ghouayba	VL	L	ML
Ain Jrain	VL	L	L	Ain Kfah	L	ML	M	Almat El Chemaliyat	VL	L	L
Almat El-Jenoubiya	VL	L	L	Aqoura	L	M	M	Bayzoun	VL	L	L
Bchille Jbeil	L	L	L	Bechtlida	VL	L	L	Behdaydat	L	ML	ML
Beit Habbaq	L	ML	ML	Bejjeh	L	ML	ML	Bekhaaz	L	ML	M
Berbara Jbeil	L	ML	M	Bintael	L	L	ML	Birket Hjoula	VL	L	L
Blatt Jbeil	L	ML	ML	Boulhos	VL	L	L	Breyj Jbeil	VL	L	L
Chamat	L	M	M	Chikhane	L	ML	M	Chmout	L	L	ML
Eddeh Jbeil	L	ML	M	Ehmej	VL	L	ML	Fatre	VL	L	L
Ferhet	L	ML	ML	Fghal	L	L	ML	Frat	VL	L	L
Ghabat	VL	ML	M	Ghalboun	L	ML	ML	Gharzouz	L	ML	M
Ghofrine	L	ML	M	Habil	VL	L	L	Halate	L	ML	ML
Haqel	L	L	L	Hbaline	L	ML	ML	Hboub	L	ML	ML
Hdeine	L	ML	M	Hema Er-Rehban	L	M	M	Hema Mar Maroun Aann	VL	M	M
Hjoula	L	L	L	Hosrayel	L	ML	M	Hsarat	L	ML	ML
Hsoun	L	L	ML	Jaj	VL	L	ML	Janne	VL	L	L
Jbeil	L	M	M	Jeddeyl Jbeil	L	M	M	Jlisse	VL	L	L
Jouret El-Qattine	L	L	L	Kfar Baal Annaya	VL	L	L	Kfar Kidde	L	ML	M
Kfar Kouas	L	L	L	Kfar Mashoun	L	M	M	Kfoun	VL	L	L

Kharbe Jbeil	L	ML	ML	Laqlouq	L	M	M	Lassa	VL	L	ML
Lehfed	VL	L	L	Maad	L	ML	ML	Mar Sarkis	L	M	M
Mastita	L	M	M	Mayfouq	VL	L	L	Mazraat El Siyad	L	M	M
Mazraat El-Maaden	VL	L	L	Mechane	L	L	L	Mechmech Jbeil	VL	L	L
Mehrin	L	ML	ML	Mejdel El-Akoura	L	ML	M	Mghayreh Jbeil	L	ML	M
Mounsef	L	ML	M	Nahr Ibrahim	L	M	M	Qahmez	VL	L	ML
Qartaba	VL	L	L	Qartaboun	L	M	M	Qattara Jbeil	VL	L	L
Qorqraya	VL	VL	L	Ramout	L	ML	ML	Ras Osta	L	L	L
Rihane Jbeil	L	M	M	Sakiet El-Khayt	VL	L	ML	Saqi Richmaya	VL	L	ML
Sebrine	L	L	L	Seraita	VL	ML	ML	Souane Jbeil	VL	L	ML
Tadmor	L	ML	M	Tartej	VL	L	ML	Torzaiya	VL	L	L
Yanouh Jbeil	L	ML	M	Zibidine Jbeil	VL	L	L				

El Metn

Municipality	17-Jan	18-Jan	19-Jan	Municipality	17-Jan	18-Jan	19-Jan	Municipality	17-Jan	18-Jan	19-Jan
Aain El-Qabu	VL	L	L	Aain El-Qach	L	M	M	Aain El-Teffaha	L	ML	ML
Aain el-Safssaf El-M	L	ML	M	Abou Mizane	L	ML	ML	Ain Aar	ML	M	M
Ain Alaq	L	ML	M	Ain El-Kharroube	L	ML	M	Ain El-Sendiane	L	ML	M
Ain El-Zeitoune	L	ML	M	Ain Saadeh	L	ML	M	Aintoura El-Matn	L	M	M
Amaret Chalhoub	ML	M	M	Antelias	ML	M	M	Atchaneh	L	ML	M
Ayroun	L	M	M	Baabdat	L	L	M	Baouchariyeh	M	M	M
Baskinta	VL	ML	M	Beit Chabab	L	ML	M	Beit El-Chaar	ML	M	M
Beit El-Kekko	ML	M	M	Beit Mery	L	ML	M	Bhersaf	L	ML	M
Bikfaya	L	M	M	Biyakout	ML	M	M	Bnabil	L	ML	M
Bourj Hammoud	M	M	M	Bqennaya	L	ML	M	Broummana El-Matn	L	ML	M
Bsalim	L	ML	M	Bsifrine	L	ML	M	Bteghrine	L	L	ML
Chaouiye	L	ML	M	Chouaya El-Matn	L	ML	M	Choueir	L	ML	M
Chrine	L	L	L	Dahr El Sawan El-Mat	L	ML	M	Daychouniyeh	ML	M	M
Dbayeh	ML	M	M	Deir Chamra	VL	L	L	Deir Mar Abda el Mch	L	L	M
Deir Mar Roukouz	M	M	M	Deir Tamiche	L	L	M	Dik El-Mehdi	L	ML	M
Dikwaneh	M	M	M	Douar El-Matn	L	ML	M	Fanar	L	M	M
Fraike	L	L	M	Haret El-Ballaneh	L	ML	M	Hbous	ML	M	M
Himlaya	L	L	M	Jal El Did	ML	M	M	Jdeideh El-Metn	ML	M	M
Jouar El-Matn	L	L	ML	Jouret El-Ballout	L	ML	M	Kaaqour	L	ML	M
Kfar Aaqab	L	L	ML	Kfertay El-Matn	VL	L	ML	Khenchara	L	ML	M
Khillet El-Mtain	L	ML	M	Konnabat Broummana	L	ML	M	Konnabat Salima	L	L	M
Machraah El-Matn	VL	L	ML	Majdel Tarchich	L	M	M	Majzoub	ML	M	M
Mansouriyeh El-Metn	M	M	M	Mar Boutros Karm Et-	L	L	M	Mar Chaya et Mzekke	L	ML	M
Mar Moussa Ed-Douar	L	ML	M	Marjaba	L	ML	ML	Masqa	L	L	M
Mayasse	L	L	M	Mazraat Deir Aoukar	L	M	M	Mazraat El-Hadirat	L	ML	M
Mazraat Yachouh	ML	M	M	Mchikha	L	ML	M	Menqlet Mezher	ML	M	M
Mhaydseh Matn	L	M	M	Mkalles	M	M	M	Mrouj	L	M	M
Mtain	L	M	M	Mtayleb	L	M	M	Nabay	L	ML	M
Naccache	ML	M	M	Ouadi Chahine	L	L	M	Ouadi El-Karm El-Mat	VL	L	ML
Ouata El-Mrouj	L	M	M	Ouyoun El-Matn	L	L	M	Qornet Chehwan	L	ML	M
Qornet El-Hamra	L	L	M	Roumieh	L	ML	M	Sfeilet Bikfaya	L	L	M
Sinn El-Fil	M	M	M	Zabbougha	VL	L	ML	Zalqa	ML	M	M

Zarououn	L	ML	M	Zekrite	L	L	M	Zighrine El-Matn	L	M	M
Zouk El-Khrab	ML	M	M								

Chouf

Municipality	17-Jan	18-Jan	19-Jan	Municipality	17-Jan	18-Jan	19-Jan	Municipality	17-Jan	18-Jan	19-Jan
Aalmane El-Chouf	L	M	M	Aammiq El-Chouf	L	L	ML	Ain Ouzein	L	L	L
Ain Qani	L	L	ML	Ain Zhalta	L	L	ML	Ainbal	L	L	ML
Amatour	L	L	ML	Anout	L	L	M	Atrine	L	L	ML
Baadarane	L	ML	M	Baaqline	L	L	M	Baasir	ML	M	M
Barja	ML	M	M	Barouk	L	L	L	Bater	L	ML	M
Batloun	L	ML	M	Bayqoun	L	M	M	Bchetfine	L	L	M
Beiteddine	L	L	ML	Benouati Ech-Chouf	L	L	ML	Berjein	L	L	ML
Bireh et Mtalleh	L	ML	M	Biret El-Chouf	L	ML	M	Bkechtine Ouel Mchei	VL	L	L
Bkifa El-Chouf	L	L	ML	Botme	L	L	ML	Bqaiaa Ech-Chouf	L	L	ML
Bsaba El-Chouf	L	ML	M	Chammis El-Chouf	L	M	M	Chehim	L	L	ML
Chemaarine	L	L	L	Chourit	L	L	ML	Daher El-Chouf	L	L	ML
Dalhoun	L	ML	M	Damour	ML	M	M	Daraya El-Chouf	L	L	ML
Deir El-Moukhalles	L	L	ML	Deir Baba	L	L	ML	Deir Dourit	L	L	ML
Deir El-Qamar	L	ML	ML	Deir Kouche	L	L	ML	Dibbieh	L	L	L
Dmit	L	L	ML	Fouara Jaafar	L	L	M	Fraidis El-Chouf	L	ML	M
Ghabet Jaafar	L	L	M	Gharife	L	L	ML	Haret Jandal	L	ML	M
Hasrout	L	ML	M	Jadra	ML	M	M	Jahlieh	L	L	ML
Jbeih El-Chouf	L	ML	M	Jdeidet El-Chouf	L	ML	ML	Jiyeh	ML	M	M
Jleilyeh	L	L	M	Jmailiyeh	L	M	M	Joun	L	ML	M
Kahlounie El-Chouf	L	M	M	Ketermaya	L	M	M	Kfar Faqoud	L	L	ML
Kfar Hamal	L	ML	M	Kfar Him	L	ML	M	Kfar Katra	L	L	ML
Kfar Niss	L	ML	M	Kfar hay	L	ML	M	Kfarnabrakh	L	ML	M
Khirbet Bisri	L	L	ML	Knayse El-Chouf	VL	L	ML	Maaniyeh	L	M	M
Maasser Beiteddine	L	ML	ML	Maasser El-Chouf	L	L	ML	Majdalouna	L	ML	M
Majdel El-Meouch	L	ML	M	Mazboud	L	ML	M	Mazmoura	L	L	M
Mazraat El Chouf	L	ML	M	Mazraat El Daher	L	L	ML	Mazraat El-Douair	L	L	ML
Mechref	L	L	ML	Mghairie	L	M	M	Mghayrie El-Chouf	L	L	ML
Moukhtara	L	L	ML	Mrusti	L	ML	M	Mtolle	L	ML	M
Naameh	ML	M	M	Niha El-Chouf	L	ML	M	Ouadi Abou Youssef	VL	VL	L
Ouadi Ed-Deir	L	ML	M	Ouadi El-Sit	L	ML	M	Ouadi bnehlay	VL	L	ML
Qraibeh	L	ML	M	Qreiaa	VL	L	L	Rmayle El-Chouf	L	M	M
Semqaniyeh	L	M	M	Sibline	ML	M	M	Sirjbeil	L	L	M
Warhanieh	L	ML	M	Werdaniyeh	L	M	M	Zaarourieh	L	ML	M

Baabda

Municipality	17-Jan	18-Jan	19-Jan	Municipality	17-Jan	18-Jan	19-Jan	Municipality	17-Jan	18-Jan	19-Jan
Abadiyeh	L	ML	M	Ain Mouaffaq	L	M	M	Araiya	L	ML	M
Arbaniyeh	L	L	M	Arsoun	L	ML	M	Baabda	ML	M	M
Baalchmey	ML	M	M	Bmaryam	L	ML	M	Bourj El-Brajneh	M	M	M
Boutchay	L	M	M	Bsaba Baabda	ML	M	M	Btekhney	L	ML	M
Btibyat	L	ML	M	Bzebdine	L	ML	M	Chbeniyeh	L	M	M
Chiyah	M	M	M	Chmeisset Baabda	L	ML	M	Chouit	L	ML	M
Deir El-harf	L	ML	M	Deir Khouna	L	ML	M	Dlaybeh	L	ML	M

Falougha	L	M	M	Furn El-Chebbak	M	M	M	Hadath Beyrouth	M	M	M
Halaliyeh Baabda	L	L	M	Hammana	ML	M	M	Haret El Sett	L	ML	M
Haret Hamze	L	ML	M	Haret Hreik	M	M	M	Hasbaiya El-Metn	L	ML	M
Jouar El-Hoz	L	L	ML	Jouret Arsoun	L	ML	M	Kfar Chima	ML	M	M
Kfar Selouane	L	ML	ML	Khalouat Baabda	ML	M	M	Kneisset Baabda	L	L	M
Laylakeh	ML	M	M	Louayzeh Baabda	L	ML	M	Merdache	ML	M	M
Mzairaa Baabda	L	L	M	Ouadi Chahrour El Ol	L	M	M	Ouadi Chahrour El So	L	ML	M
Qalaa Baabda	L	ML	M	Qhraybe Baabda	L	ML	M	Qobbayaa	L	M	M
Qornayel	L	L	M	Qortada	VL	L	M	Qrayeh Baabda	L	ML	M
Qsaibeh Baabda	L	L	M	Qtale Baabda	L	ML	M	Ras El Metn	L	ML	M
Ras El-Haref	L	M	M	Rouayset El-Ballout	L	ML	M	Salima Baabda	L	ML	M
Tahouitat El Ghadir	ML	M	M	Tarchich	L	ML	M	Zandouqa	VL	L	M

Aley

Municipality	17-Jan	18-Jan	19-Jan	Municipality	17-Jan	18-Jan	19-Jan	Municipality	17-Jan	18-Jan	19-Jan
Abey	L	ML	M	Aghmid	L	ML	M	Ain Dara	L	M	M
Ain Drafil	L	ML	M	Ain El Halazoun	ML	M	M	Ain El-Rmmaneh	L	L	M
Ain Jedideh	ML	M	M	Ain Ksour	L	ML	M	Ain Onoub	L	ML	M
Ain Traz	L	L	M	Ainab	L	ML	M	Aley	ML	M	M
Aramoun	L	M	M	Aytat	ML	M	M	Azouniyeh	ML	M	M
Baawerta	L	L	ML	Badghan Oua Wadi Bad	ML	M	M	Bassatine	L	M	M
Bayssour	L	M	M	Bchamoun	L	M	M	Bdadoun	L	ML	M
Behouara	L	ML	M	Bennay	L	ML	M	Bhamdoun El-Dayaa	ML	M	M
Bhamdoun El-Mhatta	ML	M	M	Bkhechthey	ML	M	M	Bleibel	L	ML	M
Bmakine	ML	M	M	Bmehray	L	ML	ML	Bouzrid	VL	L	M
Bserrine	ML	M	M	Bsous	L	L	M	Btalloun	ML	M	M
Btater	ML	M	M	Chanay	ML	M	M	Charoun	ML	M	M
Chartoun	L	ML	M	Chemlane	L	ML	M	Choueifat El-Aamrous	ML	M	M
Choueifat El-Oumara	ML	M	M	Choueifat El-Quoubbe	ML	M	M	Dakkoun	L	L	M
Deir Qoubel	L	ML	M	Dfoun	L	M	M	Douair El Remmaneh	L	ML	M
Ghaboun	L	ML	M	Habramoun	L	ML	M	Homs Oua Hama	L	M	M
Houmal	L	ML	M	Jisr El Qadi	L	L	M	Kehaleh	L	ML	M
Keyfoun	ML	M	M	Kfar Aamey	L	M	M	Kommatyeh	L	M	M
Maasrati	L	ML	M	Majdel Baana	ML	M	M	Mansourieh et Ain El	ML	M	M
Mazraat El-Nahr	L	M	M	Mchakhte	L	ML	M	Mecherfeh	ML	M	M
Mejdlaya	L	M	M	Mrayjat	L	ML	M	Ramliyah	L	ML	M
Rechmaya	L	ML	M	Rejmeh	L	ML	M	Remhala	L	ML	M
Rouaysset El Neemane	L	M	M	Saoufar	ML	M	M	Selfaya	L	L	ML
Sirhmoul	L	M	M	Souq El Ghareb	L	M	M	Taazanieh	ML	M	M

Kesrouane

Municipality	17-Jan	18-Jan	19-Jan	Municipality	17-Jan	18-Jan	19-Jan	Municipality	17-Jan	18-Jan	19-Jan
Achkout	L	L	ML	Adma Oua Dafneh	L	ML	M	Ain Ed-Delbe Kesroua	VL	L	L
Ain El-Rihane	L	L	M	Aintoura Kesrouane	L	ML	M	Ajaltoun	L	L	ML
Akaybeh Kesrouane	L	M	M	Aramoun Kesrouane	VL	L	M	Azra ouel Ozor	VL	L	ML
Ballouneh	L	L	M	Batha	VL	L	M	Bekaatat Achkout	L	ML	ML
Bekaatat Kanaan	VL	L	L	Bizhel	VL	L	ML	Bouar	L	ML	M
Bqaatouta	VL	ML	ML	Bqaq Ed-Dine	L	ML	M	Bzommar	L	L	M

Chahtoul	L	L	M	Chnaniir	VL	L	M	Chouan	VL	L	L
Daraya Kesrouane	L	L	ML	Darououn	L	L	M	Deir Baqlouch	L	L	M
Dlebta	VL	L	ML	Eghbeh	VL	VL	L	Faraya	VL	M	M
Fatka	L	L	ML	Feytroun	L	L	L	Ghazir	L	L	M
Ghbaleh Kesrouane	L	L	ML	Ghedrass	L	L	L	Ghosta	VL	L	M
Ghynéh	L	ML	ML	Harharaya w Kattine	L	L	ML	Harissa Kesrouane	L	L	M
Hayata	VL	L	ML	Hosein	L	L	L	Hrajel	L	M	M
Jdeideh Ghazir	L	L	M	Jeita	L	L	M	Jounieh Ghadir	L	ML	M
Jounieh Haret Sakhr	ML	M	M	Jounieh Salel Alma	L	ML	M	Jounieh Sarba	ML	M	M
Jouret Bedrane	L	L	M	Jouret Mhad	VL	L	ML	Jouret Termos	L	ML	ML
Kfar Debiane	VL	ML	ML	Kfar Tay Kesrouane	VL	L	ML	Kfar Yassine	ML	M	M
Kfour Kesrouane	L	L	ML	Kharayeb Nahr Ibrahi	L	L	ML	Klayaat Kesrouane	VL	L	ML
Maarab	VL	L	ML	Maaysra Kesrouane	L	L	ML	Mayrouba	VL	ML	M
Mazraat Er-Ras	L	ML	M	Mazraat Mrah El-Mir	VL	L	M	Mchaa El Ftouh	L	M	M
Mchaa Faraya	L	M	M	Mchaa Kfar Dibiane	VL	M	M	Mghaer	VL	L	L
Mradiyeh	VL	L	ML	Nahr Ed-Dahab	VL	L	L	Nammoura Kesrouane	L	L	L
Ouata El Jaouz	VL	L	ML	Ouata Sillam	ML	M	M	Raachine	VL	L	L
Rayfoun	L	L	M	Safra Kesrouane	ML	M	M	Shayle Kesrouane	L	L	M
Tabarja	L	M	M	Yahchouch	VL	L	L	Zaaytneh	VL	L	ML
Zeytoun	L	ML	ML	Zouk Mikael	ML	M	M	Zouk Mosbeh	ML	M	M

Baalbek_Hermel

Baalbek

Municipality	17-Jan	18-Jan	19-Jan	Municipality	17-Jan	18-Jan	19-Jan	Municipality	17-Jan	18-Jan	19-Jan
Aadous	L	M	M	Aamchki	ML	ML	M	Aarsal	L	ML	M
Ain Baalbek	L	ML	M	Ain Bourday	VL	M	M	Ain El-Benye	ML	M	M
Ain El-Jaouz Baalbek	M	ML	M	Ain El-Siya Chadoura	ML	M	M	Al Khodr Baalbek	VL	ML	M
Al Nabi Chit	VL	ML	M	Aynata Baalbek	VL	M	M	Baalbek	L	M	M
Bachwat	VL	L	ML	Barqa	VL	L	L	Bednayel Baalbak	L	M	M
Beit Chama	L	M	M	Bijjaje	L	M	M	Bouday	L	ML	ML
Brital	L	M	M	Btadi	L	ML	M	Chaat	L	M	M
Chaibe	ML	M	M	Chlifa	L	M	M	Chmestar	L	M	M
Dar El-Oussa	VL	L	ML	Deir El-Ahmar	L	ML	M	Deir Mar Maroun Baal	ML	M	M
Douris	L	M	M	Fakiha	L	M	M	Hadath Baalbek	L	M	M
Ham	ML	M	M	Haour Taala	L	M	M	Hizzine	L	M	M
Hlebta	L	L	M	Hosh Barada	L	M	M	Hosh El Dahab	L	M	M
Hosh El Snid	L	M	M	Hosh El-Nabi	L	M	M	Hosh El-Rafiq	L	M	M
Hosh Tal Safiya	L	M	M	Hrebta	L	ML	M	laat	L	M	M
Jebaa	L	M	M	Jenta	VL	M	M	Kfar Dabach	L	M	M
Kfar Dane	L	M	M	Khraibeh El-Hermel	VL	ML	ML	Khreibet Baalbek	L	M	M
Kneisset Baalbek	L	M	M	Labueh	L	M	M	Maarboun	L	M	M
Majdaloun	L	M	M	Maqneh	L	M	M	Mazraat Beit Mcheik	L	M	M
Misraya	L	M	M	Mograq	L	M	M	Nabha El-Damdoum	L	ML	M
Nabi Chbay	L	M	M	Nabi Osman	L	M	M	Nahleh baalbek	L	ML	M
Ouadi El-Oss	VL	L	ML	Qaa Baayoun	L	M	M	Qaa Jouar Maqiye	ML	M	M
Qaa Ouadi El-Khanzir	ML	M	M	Qah Baalbek	L	M	M	Qarha Baalbek	L	M	M

Qsarnaba	L	M	M	Ram Baalbek	L	L	M	Ras Baalbek El Sahl	L	M	M
Ras Baalbek El-Charq	L	M	M	Riha	L	M	M	Saaide	L	M	M
Sboubba	L	ML	M	Seriine El-Tahta	L	M	M	Slouqi	VL	M	M
Taiba Baalbek	L	M	M	Talia	L	M	M	Taraiya	L	M	M
Temnin El Fawqa	L	M	M	Temnin El-Tahta	L	M	M	Tfail	ML	ML	M
Yahfoufa	VL	M	M	Yammouneh	L	ML	M	Younine	L	M	M
Zboud	L	M	M								

Hermel

Municipality	17-Jan	18-Jan	19-Jan	Municipality	17-Jan	18-Jan	19-Jan	Municipality	17-Jan	18-Jan	19-Jan
Charbine El-Hermel	L	L	M	Hermel Jbab	L	ML	M	Hermel	ML	M	M
Maaysra El-Hermel	L	L	M	Michaa Mrajhine	L	ML	M	Ouadi Faara	L	L	M
Ras Baalbek - Ouadi	ML	M	M	Ras Baalbek El Gharb	L	ML	M	Zighrine	L	L	M

Akkar

Akkar

Municipality	17-Jan	18-Jan	19-Jan	Municipality	17-Jan	18-Jan	19-Jan	Municipality	17-Jan	18-Jan	19-Jan
Aain Tinta	L	M	M	Aaiyat	L	M	M	Aakkar El-Aatiqa	L	L	ML
Aamar Akkar	L	M	M	Aamar El Baykat	L	M	M	Aamayer	L	M	M
Aamriyet Akkar	L	M	M	Aandqet	L	ML	M	Aarmeh	L	M	M
Aarqa	L	M	M	Aawaynat	L	M	M	Aayoun Akkar	L	M	M
Abboudiye	L	M	M	Ain El-Zeit	L	M	M	Ain Yaaqoub	L	ML	M
Akroum	L	ML	ML	Aridet Cheikh Zennad	ML	M	M	Baldeh w Mazraat Bal	L	M	M
Barcha	L	M	M	Bardeh	L	M	M	Bebnine	L	M	M
Beino	L	M	M	Beit Ayoub	L	M	M	Beit El-Haouch	L	M	M
Beit Mellat	L	M	M	Beit Younes	L	ML	ML	Berbara Akkar	L	M	M
Berqayel	L	M	M	Bezbina	L	L	ML	Bireh Akkar	L	M	M
Borj	L	M	M	Bqerezla	L	M	M	Bzal	L	ML	M
Chane	L	L	M	Chaqdouf	L	M	M	Charbila	L	M	M
Cheikh Mohammad	L	M	M	Cheikh Taba Es-Sahl	L	M	M	Cheikh Taba	L	M	M
Cheikh Zennad	ML	M	M	Cheikhlar	L	M	M	Chir Hmairine	L	M	M
Daghle	L	M	M	Dahr Laissine	L	M	M	Darine	L	M	M
Dawra	L	ML	M	Dawsa w Baghdadi	L	M	M	Dayret Nahr El-Kabir	L	M	M
Deir Dalloum	L	M	M	Deir Jennine	L	M	M	Denbou	L	ML	M
Dibbabiyyeh	L	M	M	Douair Aadwiyeh	L	M	M	Fassikine	L	M	M
Fnaydek	L	ML	ML	Fraydes Akkar	L	M	M	Ghazayle	L	M	M
Habchit	L	L	M	Hakour	L	M	M	Halba	L	M	M
Haouchab	L	M	M	Hayssat	ML	M	M	Haytla	L	M	M
Hayzouq	L	M	M	Hedd	L	M	M	Hmaira Akkar	L	M	M
Hmaiss Akkar	L	M	M	Hnaider	L	M	M	Hokr Ed-Dahri	ML	M	M
Hokr Etti	L	M	M	Hokr Jouret Srar	L	M	M	Houaich	L	ML	M
Hrar	L	M	M	Idbil	L	M	M	Ilal	L	M	M
Janine	L	M	M	Jdeidet El-Joumeh	L	M	M	Jdeidet El-Kaiteh	L	M	M
Jebayel	L	M	M	Kafr	L	ML	ML	Kafr	L	M	M
Karm Asfour	L	M	M	Kfar Melki Akkar	ML	M	M	Kfar Noun	L	ML	M
Kfarharra	L	M	M	Khalsa	L	M	M	Kharnoubet Akkar	L	M	M

Khirbet Daoud Aakkar	L	M	M	Khirbet El Remmane	L	M	M	Khirbet Shar	L	M	M
Khoreybet El-Jindi	L	M	M	Khreibet Aakkar	L	M	M	Kneisset Aakkar	ML	M	M
Kneisset Hnaider	L	M	M	Knisse	L	M	M	Kroum El-Aarab	L	M	M
Kwachra	L	M	M	Kweykhath	L	M	M	Machta Hammoud	L	M	M
Majdala	L	M	M	Majdel Akkar	L	M	M	Mar Touma	L	M	M
Marlaya Melhem	L	M	M	Mashha	L	M	M	Massoudiye	ML	M	M
Mazraat Beit Ghattas	L	M	M	Mazraat En-Nahriye	L	M	M	Mechmech	L	ML	M
Memneh	VL	L	L	Mhammara	L	M	M	Mighraq Aakkar	ML	M	M
Minyara	L	M	M	Moqayteh	M	M	M	Mounjez	L	M	M
Msalla	L	M	M	Mzeihmeh	L	M	M	Nfaiseh	L	M	M
Noura Et-Tahta	L	M	M	Ouadi El-Haour	L	M	M	Ouadi El-Jamous	L	M	M
Ouyoun El-Ghizlane	L	M	M	Qaabarine	ML	M	M	Qabaait	L	ML	M
Qachlaq	L	M	M	Qantara Aakkar	L	M	M	Qarha Aakkar	L	M	M
Qarqaf	L	M	M	Qboula	L	M	M	Qleiaat Aakkar	ML	M	M
Qloud El-Baqie	L	M	M	Qobaiyat Aakkar	L	ML	ML	Qobbat Chamrat	L	M	M
Qorayat	L	ML	ML	Qornet Aakkar	L	M	M	Qsair Aakkar	L	M	M
Rahbe	L	M	M	Rihaniyet Aakkar	L	M	M	Rmah	L	M	M
Rmoul	ML	M	M	Saadine	L	M	M	Sadaqa	L	M	M
Saidnaya	L	M	M	Sammouniye	ML	M	M	Sayssouq	L	M	M
Semmaqiye	ML	M	M	Semmaqli	L	M	M	Sfinet El-Dreib	L	M	M
Sfinet El-Qaitaa	L	ML	M	Sindyanet Zeidane	L	M	M	Souaisset Aakkar	L	M	M
Srar	L	M	M	Tal Abbas El Gharby	L	M	M	Tal Abbas El-Charqy	L	M	M
Tal Biret	ML	M	M	Tal Hmayra	L	M	M	Tal Maayan Tal Kiri	ML	M	M
Tal Sibel	ML	M	M	Tallet Chattaha	L	M	M	Tikrit	L	M	M
Tleil	L	M	M	Tshea	L	L	ML	Zawarib	L	M	M
Zouq El Hosniyeh	L	M	M	Zouq El-Haddara	L	M	M	Zouq El-Hbalsa	L	M	M
Zouq El-Moqachrine	L	M	M								

Sud

Sour

Municipality	17-Jan	18-Jan	19-Jan	Municipality	17-Jan	18-Jan	19-Jan	Municipality	17-Jan	18-Jan	19-Jan
Aaiyeh	ML	M	M	Aalma El-Chaab	L	L	M	Aaytit	ML	M	M
Abbassiyeeh Sour	ML	M	M	Abou Chech	L	ML	M	Ain Abou Abdallah	ML	M	M
Ain Baal	ML	M	M	Arzoun	ML	M	M	Aziyeh	L	L	M
Baflaya	ML	M	M	Barich	ML	M	M	Batouliyah	ML	M	M
Bayad	ML	M	M	Bazouriyeh	ML	M	M	Bediass	ML	M	M
Bestiyat	ML	M	M	Borj El Chemali	ML	M	M	Borj En-Naqoura	L	ML	M
Borj Rahhal	ML	M	M	Boustane	L	M	M	Btaychiyeh	ML	ML	M
Chaaitiye	ML	M	M	Chameh	L	L	M	Chehabiye	ML	M	M
Chehour	L	L	ML	Chihine	L	ML	M	Debaal Sour	ML	M	M
Deir Amess	L	ML	M	Deir Kifa	ML	M	M	Deir Qanoun El-Ain	ML	M	M
Deir Qanoun El-Naher	ML	M	M	Derdghaiya	ML	M	M	Dhayra	L	ML	M
Halloussiyeh	ML	M	M	Hamoul	L	L	M	Hanaouey	ML	M	M
Henniye	ML	M	M	Hmairi Sour	ML	M	M	Iskandarouna Sour	L	L	M
Jbal El Botom	L	ML	M	Jebbin	ML	M	M	Jennata	ML	M	M
Jijim	L	L	M	Jouaiya	ML	M	M	Kneisset Sour	ML	M	M

Maarake	ML	M	M	Maaroub	ML	M	M	Majadel	ML	M	M
Majdalzoun	L	ML	M	Mansouri Sour	ML	M	M	Marnba	L	L	ML
Marouahine	L	ML	ML	Mazraat El-Zalloutiy	ML	M	M	Mazraat Mechref	ML	M	M
Mazraat Tayr Semhat	L	L	ML	Mheilib	ML	M	M	Neffakhiyeh	ML	M	M
Niha Sour	ML	M	M	Ouadi Jilo	ML	M	M	Qana	ML	M	M
Qolaileh Sour	ML	M	M	Rechknayan	L	ML	M	Rmadiyah	ML	M	M
Selha Sour	ML	M	M	Siddiqine	ML	M	M	Sour	M	M	M
Srifa	L	M	M	Tayr Debbe	ML	M	M	Tayr Felsay	ML	M	M
Tayr Harfa	ML	ML	M	Touayri	L	ML	ML	Toura	ML	M	M
Yanouh Sour	ML	M	M	Yarine	ML	M	M	Zebqine	L	L	ML

Saida

Municipality	17-Jan	18-Jan	19-Jan	Municipality	17-Jan	18-Jan	19-Jan	Municipality	17-Jan	18-Jan	19-Jan
Aanqoun	ML	M	M	Aaqtanit	ML	M	M	Aarab Ej-Jall	ML	M	M
Aarab Tabbaya	ML	M	M	Abra Saida	L	M	M	Adloun	ML	M	M
Adousiyeh	ML	M	M	Ain-El-Deleb	L	M	M	Arzai	ML	M	M
Babliyah	ML	M	M	Barty	L	ML	M	Bissariyeh	ML	M	M
Bnaafoul	L	M	M	Bqosta	L	M	M	Bramiy -	L	M	M
Daoudiyeh	ML	M	M	Dareb El-Sim	L	M	M	Erkay	L	M	M
Ghassanieh	ML	M	M	Ghazieh	ML	M	M	Hajjeh	L	M	M
Haret Saida	L	M	M	Hartiyeh	ML	M	M	Hlaliye Saida	L	M	M
Insariyat	ML	M	M	Jazira Saida	M	M	M	Kafar Bit	L	M	M
Kaoutariyet El-Siyad	ML	M	M	Kfar Chellal	L	M	M	Kfar Hatta Saida	L	M	M
Kfar Milke Saida	L	M	M	Khartoum	ML	M	M	Khaziz	L	M	M
Khirbet Ed-Douair Sa	L	M	M	Khirbet El-Bassal	ML	M	M	Khrayeb Saida	ML	M	M
Loubieh	ML	M	M	Maghdouche	L	M	M	Majdelyoun	L	M	M
Matariyet El-Choumar	ML	M	M	Matayriyeh	L	M	M	Mazraat 'Mseileh	ML	M	M
Mazraat 'Snaiber	ML	M	M	Mazraat Aarab Soukka	ML	M	M	Mazraat Deir Taqla	L	M	M
Mazraat El Yahoudiye	ML	M	M	Mazraat El-Housseini	ML	M	M	Mazraat El-Mhaydaleh	ML	M	M
Mazraat El-Ouasta	ML	M	M	Mazraat Jamjim	L	M	M	Mazraat Kaoutariyet	ML	M	M
Mazraat Kfar Badda	ML	M	M	Mazraat Oussamiyat	ML	M	M	Mazraat Sari	ML	M	M
Mazraat Sinai	ML	M	M	Meemariyeh	L	M	M	Merouaniyeh	L	M	M
Miyeh ou Miyeh	L	M	M	Najjariyeh	ML	M	M	Qaaqaiyat El-Snaouba	ML	M	M
Qnarit	ML	M	M	Qraiye Saida	L	M	M	Saida Ed-Dekermane	ML	M	M
Saida El-Oustani	L	M	M	Saida El-Qadimeh	ML	M	M	Saida Kefraya	L	M	M
Saksakiyeh	ML	M	M	Salhigh Saida	L	M	M	Sarafand	ML	M	M
Sfenta	L	ML	M	Tafahta	ML	M	M	Tanbourit	L	M	M
Tebna	ML	M	M	Zaghdraiya	L	M	M	Zeita	L	M	M
Zrariyeh	ML	M	M								

Jezzine

Municipality	17-Jan	18-Jan	19-Jan	Municipality	17-Jan	18-Jan	19-Jan	Municipality	17-Jan	18-Jan	19-Jan
Ain El-Mir (El Estab)	L	M	M	Anane	L	L	ML	Aramta	L	ML	M
Ariya	L	ML	M	Aychiyeh	L	ML	ML	Azour	L	L	ML
Baba	L	L	ML	Bayssour Jezzine	L	M	M	Benoueteh Jezzine	L	ML	M
Bhannine	L	ML	M	Bisri	VL	L	ML	Bkassine	L	L	ML
Bouslaya	L	L	L	Btedine El-Leqech	L	L	ML	Chbail	VL	L	L
Choualiq Jezzine	L	M	M	Dahr Ed-Deir	L	L	ML	Deir El Qattine	L	L	ML

Demachqiyeh	ML	M	M	Ghabbatiyeh	L	L	ML	Harf Jezzine	L	L	ML
Hassaniyeh	L	M	M	Haytouleh	L	ML	M	Haytura	L	L	ML
Hidab	L	ML	ML	Homsiyeh	L	L	M	Jabal Toura	L	L	M
Jarmaq	ML	M	M	Jensnaya	L	M	M	Jernaya	L	ML	M
Jezzine	L	ML	M	Karkha	L	ML	M	Kfar Falous	L	ML	M
Kfar Houna	L	L	M	Kfar Jarrah	ML	M	M	Lebaa	L	M	M
Louayzet Jezzine	L	L	ML	Machmouche	VL	L	ML	Mahmoudiyeh Jezzine	ML	M	M
Maknounye Jezzine	L	L	ML	Maraat Ouazaiyeh	L	ML	ML	Mazraat Daraya	L	L	ML
Mazraat El-Aarqoub	L	L	ML	Mazraat El-Mathane	VL	L	ML	Mazraat El-Rahbane	L	L	ML
Mazraat Khallet Khaz	L	L	ML	Mazraat Louzid (Loua	VL	L	L	Mazraat Qrouh	L	ML	M
Mazraat Tamra	ML	M	M	Mazraat Zighrine Jez	L	L	ML	Mazraat	L	L	L
Mharbiyeh	ML	M	M	Midane Jezzine	L	L	ML	Mjeydel Jezzine	L	M	M
Mliikh	L	L	ML	Mrah El-Hbasse	L	M	M	Ouadi Baanqoudaine	L	M	M
Ouadi El-Laymoun	L	M	M	Ouardiyeh	VL	VL	L	Qabaa Jezzine	L	L	ML
Qatrani	L	L	ML	Qaytouleh	L	L	ML	Qtaleh Jezzine	L	L	ML
Rihane Jezzine	L	ML	M	Rimat	L	L	ML	Roum	L	L	ML
Roummanet	L	ML	M	Sabbah	L	L	ML	Saydoun	L	L	ML
Sfaray	L	L	L	Snaya	L	L	ML	Sojoud	L	L	ML
Srayri	L	ML	M	Taaid	VL	L	ML	Wadi Jezzine	L	L	ML
Zhalta	L	L	ML								

Bekaa

West Bekaa

Municipality	17-Jan	18-Jan	19-Jan	Municipality	17-Jan	18-Jan	19-Jan	Municipality	17-Jan	18-Jan	19-Jan
Aammiq BG	L	ML	M	Ain El Tineh BG	L	ML	M	Ain Zebdeh	L	ML	M
Ana	L	L	M	Aytanit	L	L	M	Baaloul BG	L	ML	M
Bab Mareh	L	ML	M	Chouberqiye Aammiq	L	ML	M	Dakoue	L	L	M
Deir Ain El-Jaouze	L	ML	M	Deir Tahniche	L	ML	M	Ghaza	L	ML	M
Harime El-Soughra	L	L	M	Hoch Harimeh	L	L	M	Jazira BG	L	ML	M
Jib Jennine	L	L	M	Kamed-El-Laouz	L	L	M	Kefraya BG	L	L	ML
Khiara El Atika	L	ML	M	Khiara	L	ML	M	Khirbet Qanafar	L	ML	M
Lala	L	L	M	Lebbaya BG	L	ML	M	Loussa	L	ML	M
Machghara	L	ML	M	Manara (Hammara) BG	L	L	ML	Mansoura BG	L	L	M
Marej BG	L	M	M	Maydoun	L	ML	M	Ouaqf BG	L	ML	M
Qaraaoun	L	ML	M	Qelya	L	M	M	Raouda (Istabel)	L	ML	M
Saghbine	L	ML	M	Sohmor	L	M	M	Soltan Yacoub el Ara	L	L	M
Souairy	L	L	M	Sultan Yaacoub	L	L	M	Tal Znoub	L	ML	M
Yehmor BG	L	ML	M	Zilaya	L	ML	M				

Zahle

Municipality	17-Jan	18-Jan	19-Jan	Municipality	17-Jan	18-Jan	19-Jan	Municipality	17-Jan	18-Jan	19-Jan
Aanjar (Haouch Mouss	L	L	M	Ablah	L	M	M	Ain Kfarzabad	VL	ML	M
Ali-El-Nahri	L	M	M	Bar Elias	L	M	M	Bouarej	L	M	M
Cheberqiyet Tabet	L	M	M	Chtaura	L	M	M	Deir El Ghazal	VL	ML	M
Delhamiyet Zahle	L	M	M	Ferzol	VL	M	M	Haouch El-Ghanam	L	M	M
Haouch Es-Siyadeh	L	M	M	Haouch Hala	L	M	M	Haouch Mandara	L	M	M

Haouch Qayssar	L	M	M	Hezerta	L	M	M	Hosh Moussa	L	M	M
Jdita	L	M	M	Kfarzabad	VL	M	M	Ksara	L	M	M
Majdel Aanjar	L	L	M	Makssi	L	M	M	Massa	L	M	M
Mazraat Er-Remtaniye	L	M	M	Mrayjat Zahle	L	M	M	Mzaraa Zahle	L	M	M
Nabi Ayla	L	M	M	Nasriyet Rizk	L	M	M	Nasriyet Zahle	L	M	M
Niha Zahle	L	M	M	Ouadi Ed-Deloum	L	M	M	Ouadi El-Arayech	VL	M	M
Qaa El Rim	VL	M	M	Qab Elias	L	M	M	Qousaya	VL	M	M
Rhit	L	M	M	Riyak	L	M	M	Saadnayel	L	M	M
Taal El-Akhdar	L	ML	M	Taalbeya	L	M	M	Taanayel	L	M	M
Talamara	L	M	M	Tcheflik Edde Haouch	L	M	M	Tcheflik Qiqano	L	M	M
Terbol Zahle	VL	M	M	Touaite Zahle	L	M	M	Zahle Aradi	L	M	M
Zahle El-Berbara	VL	M	M	Zahle El-Maallaqa	VL	M	M	Zahle El-Midane	VL	M	M
Zahle Er-Rassiye	VL	M	M	Zahle Haouch El-Ouma	L	M	M	Zahle Haouch El-Ouma	L	M	M
Zahle Haouch Ez-Zara	VL	M	M	Zahle Maalaqa Aradi	L	M	M	Zahle Mar Antonios	VL	M	M
Zahle Mar Elias	VL	M	M	Zahle Mar Gerios	VL	M	M	Zahle Saydet En-Naja	VL	M	M
Zebdoul	L	M	M								

Rachaiya

Municipality	17-Jan	18-Jan	19-Jan	Municipality	17-Jan	18-Jan	19-Jan	Municipality	17-Jan	18-Jan	19-Jan
Ain Arab Rachaiya	ML	L	M	Ain Ata	L	L	ML	Ain Harche	L	L	M
Aqabe Rachaya	L	L	M	Ayha	ML	ML	M	Ayta El Fokhar	L	L	M
Bakifa Rachaya	L	L	M	Bakka	ML	ML	M	Beit Lahya	L	L	M
Bireh Rachaiya	L	L	M	Daher El Ahmar	L	L	M	Deir El-Achayer	L	L	ML
Heloua Rachaiya	L	L	ML	Hoch El Qannabeh Rac	L	L	ML	Kaoukaba Bou Arab	L	L	M
Kfar Danis	L	L	M	Kfar Mechki	L	ML	M	Kfar Qouq	L	L	ML
Kherbet Rouha	L	L	M	Majdel Balhiss	L	ML	M	Mdoukha	ML	L	M
Mhaydseh Rachaiya	L	L	M	Nabi Safa	L	ML	M	Rachaiya	L	L	M
Rafid Rachaiya	L	L	M	Selsata (Mazraat Dei	VL	L	L	Tannoura	L	L	M
Yanta	L	L	ML								

Beyrouth

Beyrouth

Municipality	17-Jan	18-Jan	19-Jan	Municipality	17-Jan	18-Jan	19-Jan	Municipality	17-Jan	18-Jan	19-Jan
Achrafieh	M	M	M	Ain el-Mreisse	M	M	M	Bachoura	M	M	M
Beirut Central Distr	M	M	M	Marfai	M	M	M	Mazraa	M	M	M
Medaouar	M	M	M	Minet el-Hosn	M	M	M	Mwssaitbeh	M	M	M
Ras Beirut	M	M	M	Rmeil	M	M	M	Saifi	M	M	M
Zqaq el-Blat	M	M	M								