

Lebanon Fire Risk Bulletin



CIVIL DEDEFENCE

Refer to cadast table condition.

Please note that the indicated temperature is at 2 meters height from the ground.

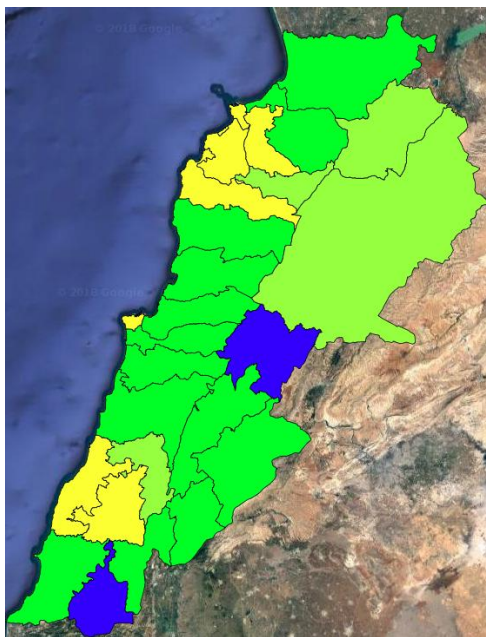
General description of potential fire risk situation

Symbol	Level of risk	Meaning and actions
VL	Very low	Very low fire risk. Controlled burning operations can be hardly executed due to high fuel moisture content. Normally wildfires self-extinguish.
L	Low	Low fire risk. Controlled burning operations can be executed with a reasonable degree of safety.
ML	Medium low	Medium-low fire risk. Controlled burning operations can be executed in safety conditions. All the fires need to be extinguished.
M	Medium	Medium fire risk. Controlled burning operations would be avoided. All the fires need to be very well extinguished.
M	Medium high	Controlled burning is not recommended. Open flame will start fires. Cured grasslands and forest litter will burn readily. Spread is moderate in forests and fast in exposed areas. Patrolling and monitoring is suggested. Fight fires with direct attack and all available resources.
H	High	Ignition can occur easily with fast spread in grass, shrubs and forests. Fires will be very hot with crowning and short to medium spotting. Direct attack on the head may not be possible requiring indirect methods on flanks. Patrolling and monitoring the territory is highly suggested.
E	Extreme	Ignition can occur also from sparks. Fires will be extremely hot with fast rate of spread. Control may not be possible during day due to long range spotting and crowning. Suppression forces should limit efforts to limiting lateral spread. Damage potential total. Patrolling and monitoring the territory is highly suggested.

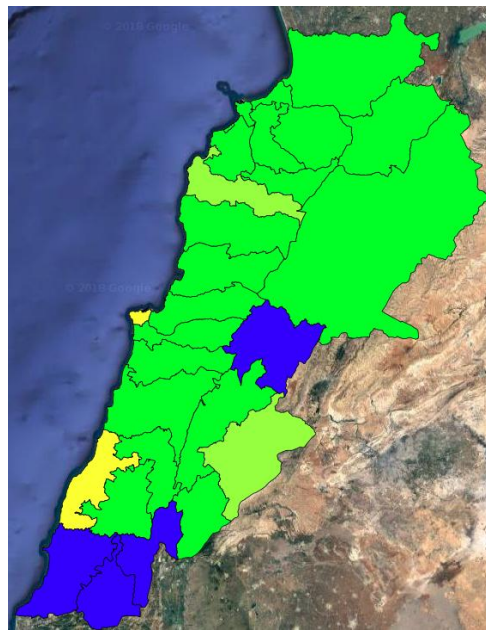
Beirut, 19 February 2019

FIRE RISK INDEX

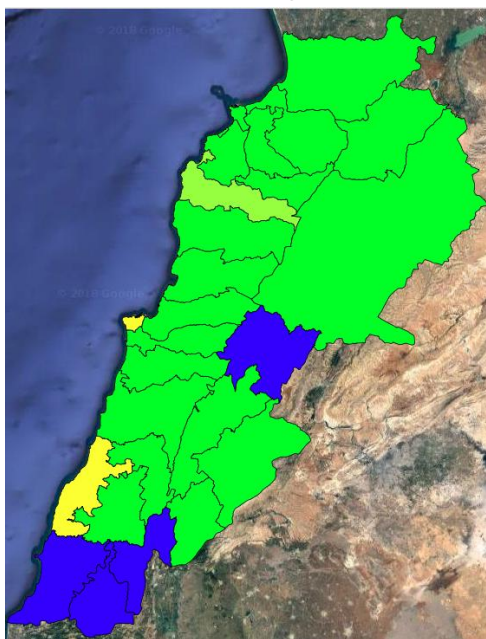
18 February 2019



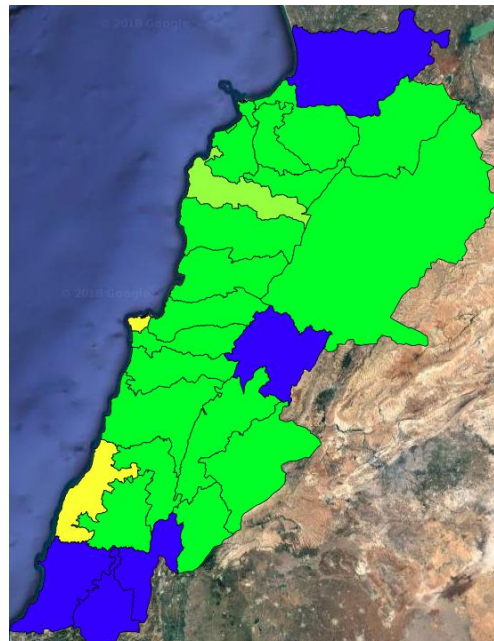
19 February 2019



20 February 2019



21 February 2019



Layer Legend:

Lebanon Wildfire Risk Index 1

Data: Run: 19/02/2019 00:00. Forecast for 19

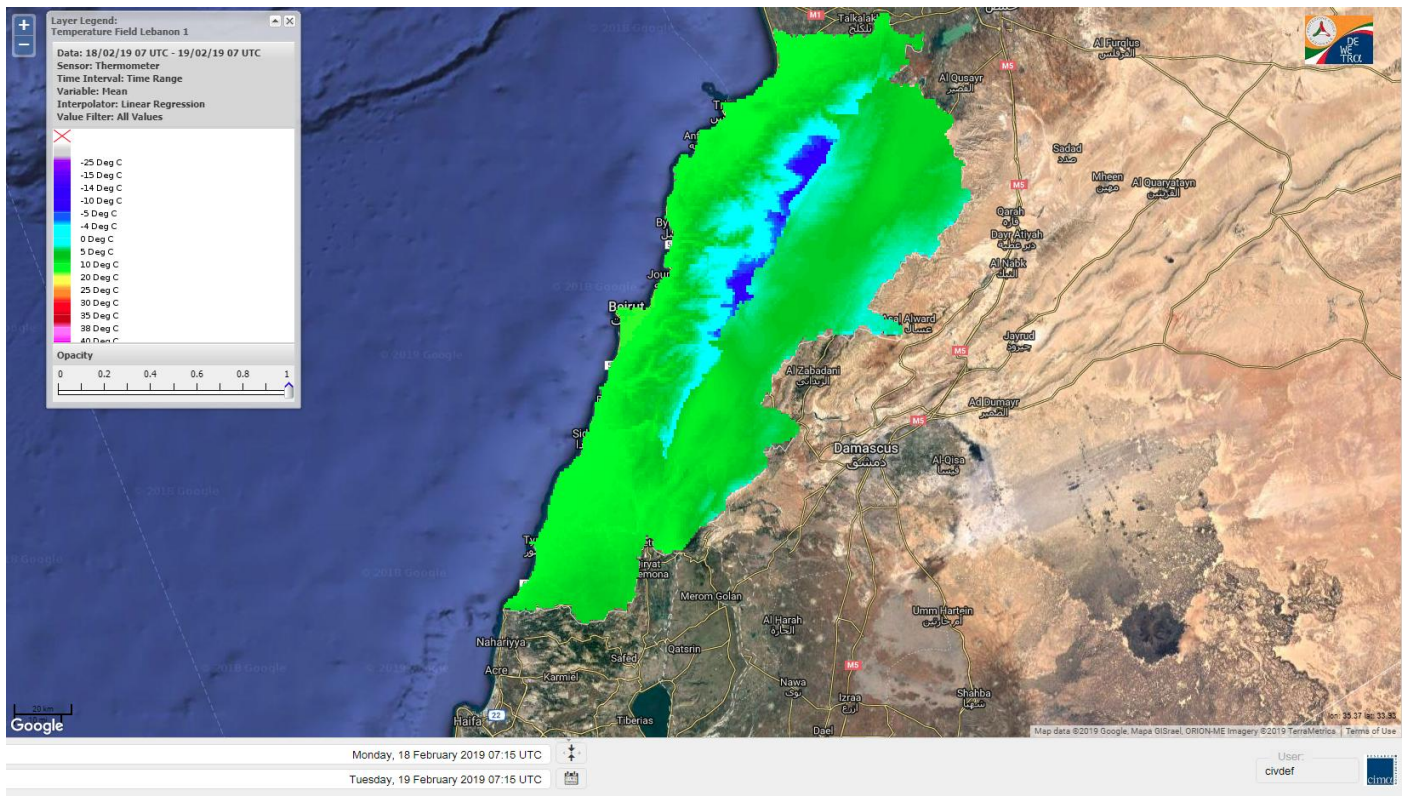
Model: RISICO for the Republic of Lebanon

Variable: Fire Weather Index

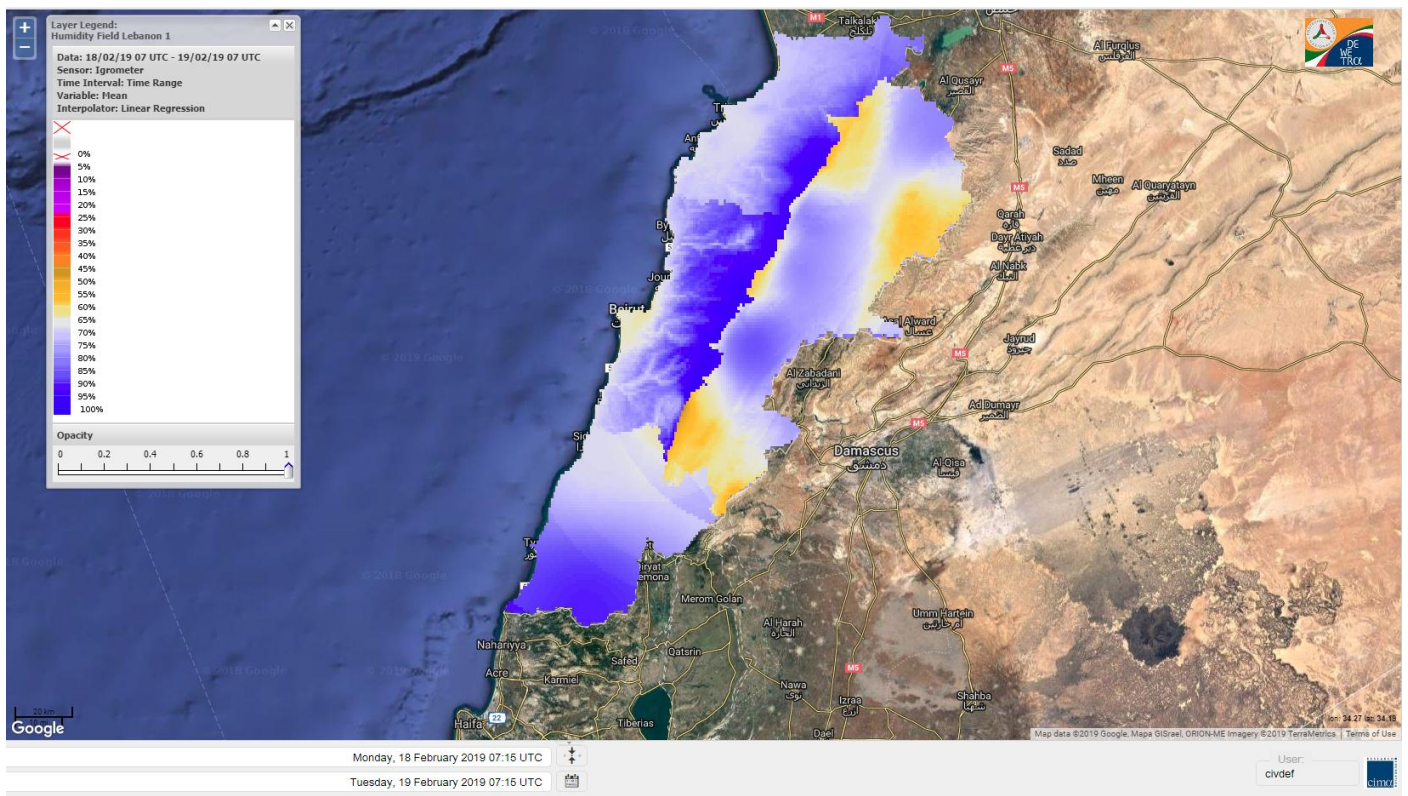
Spatial Resolution: Caza

- VERY LOW
- LOW
- MEDIUM-LOW
- MEDIUM
- MEDIUM-HIGH
- HIGH
- EXTREME

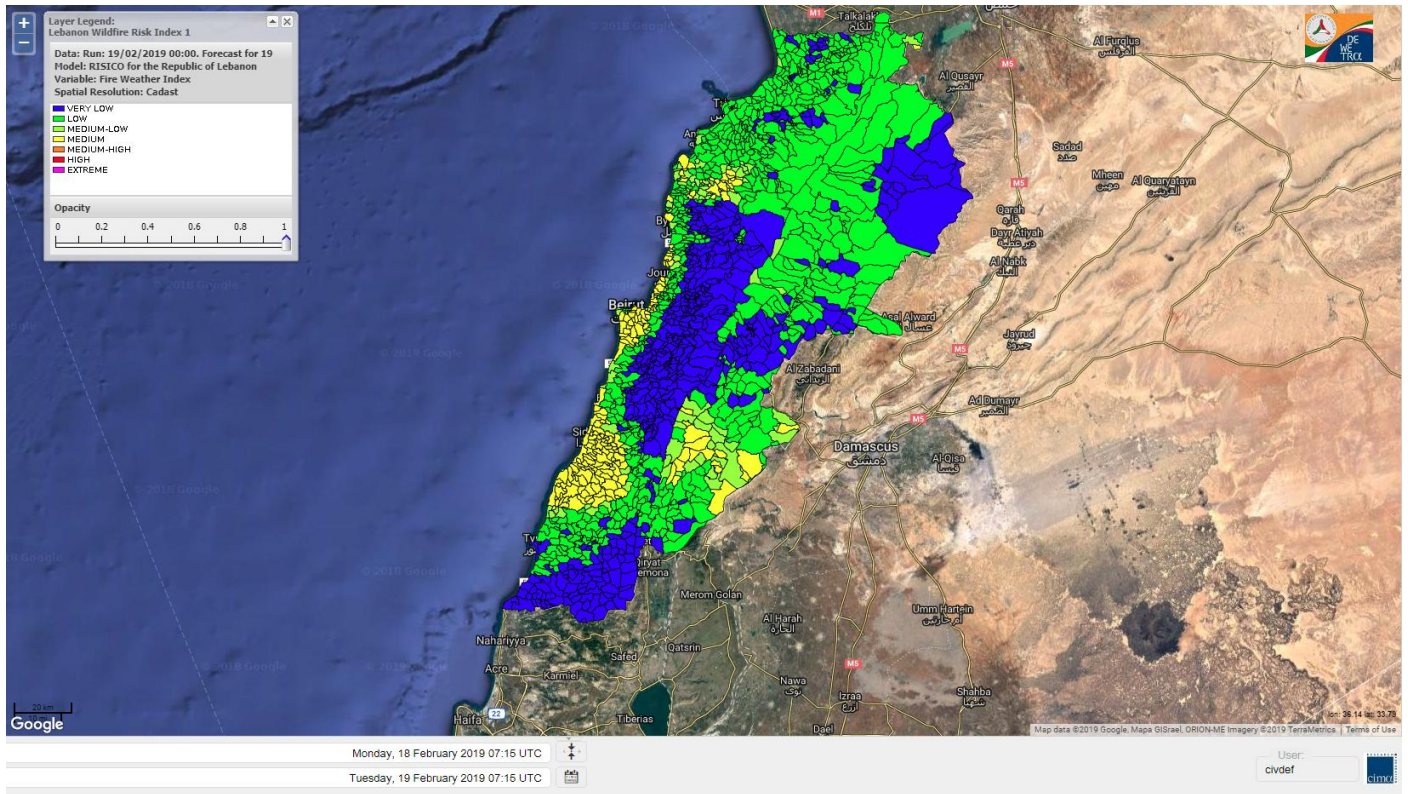
Lebanon temperature for Lebanon 19 February 2019



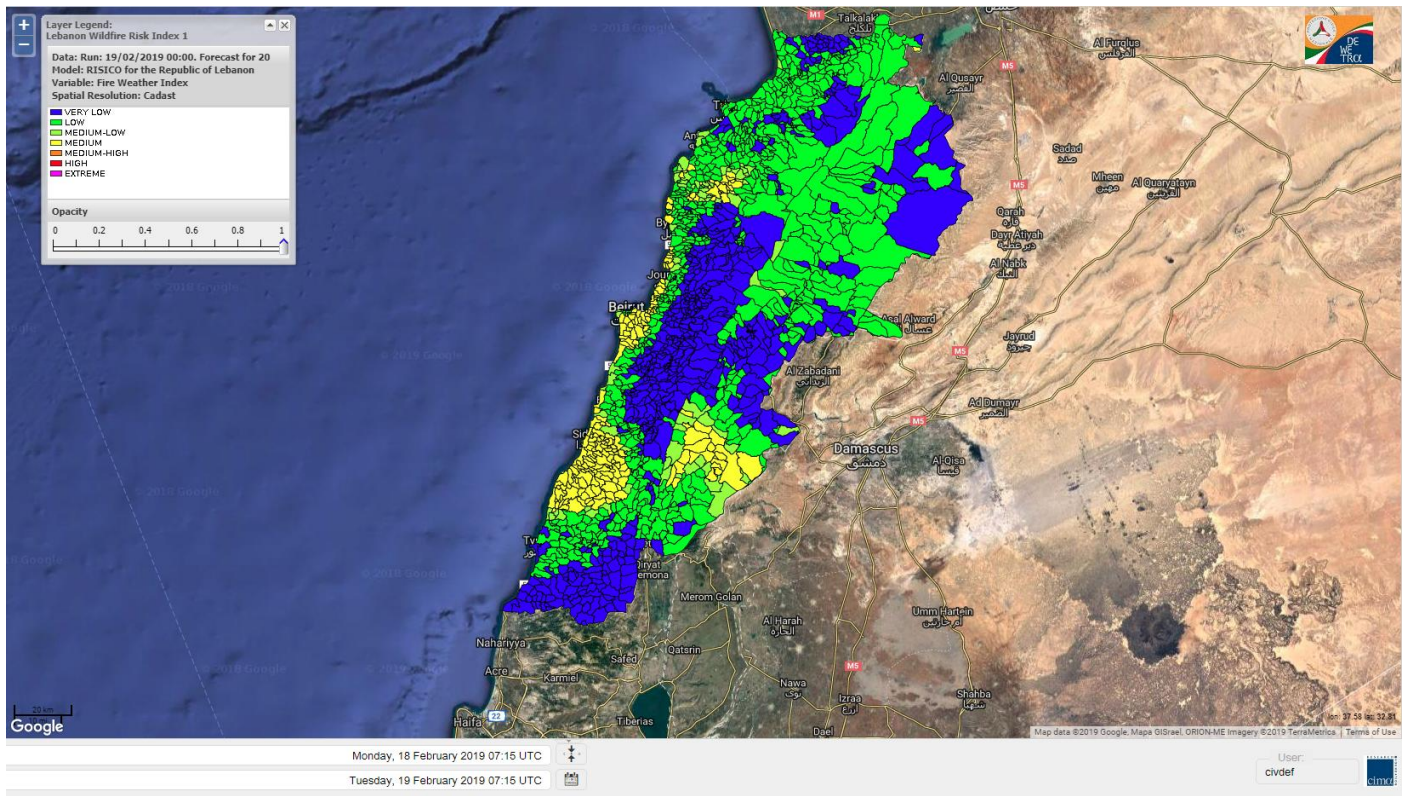
Lebanon humidity for Lebanon 19 February 2019



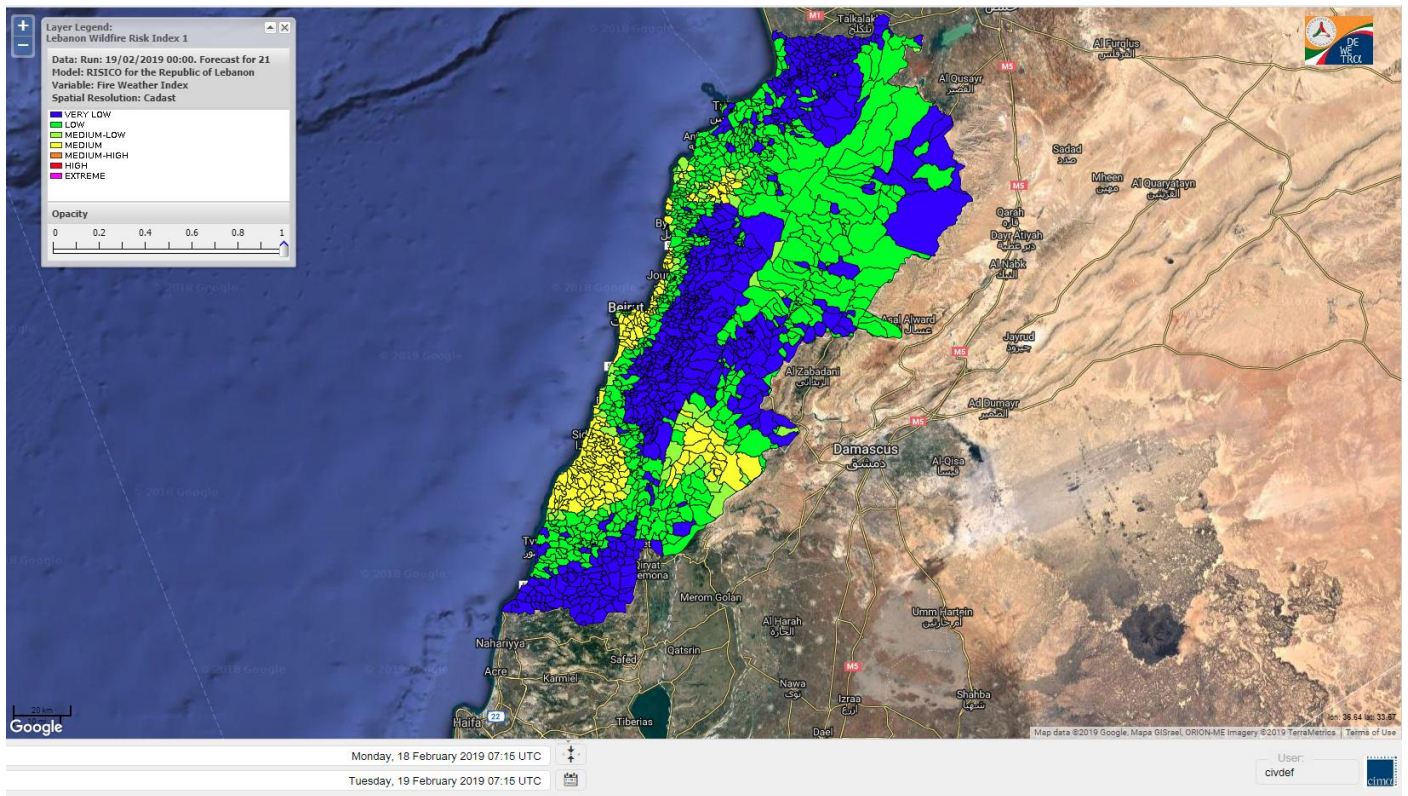
Lebanon for 19 February 2019



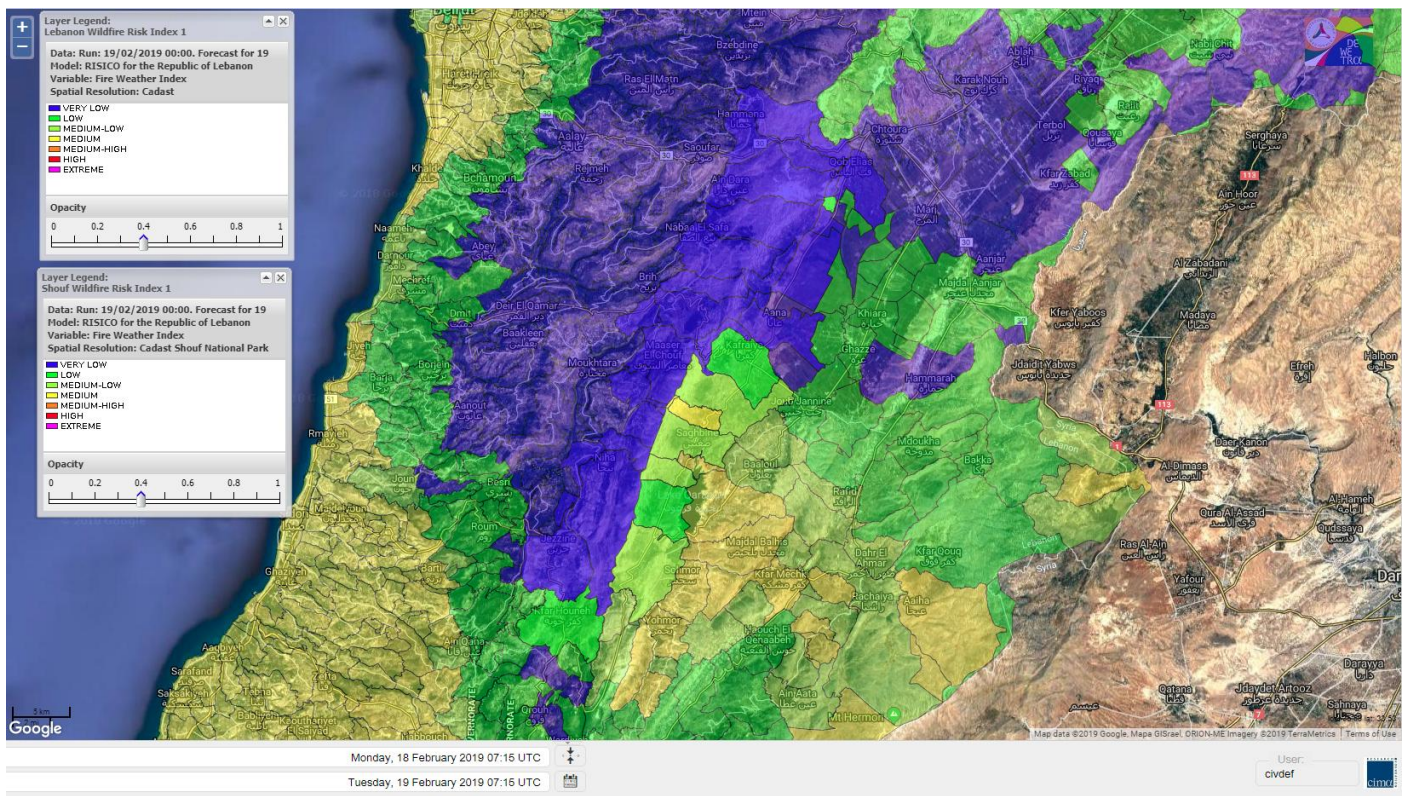
Lebanon for 20 February 2019



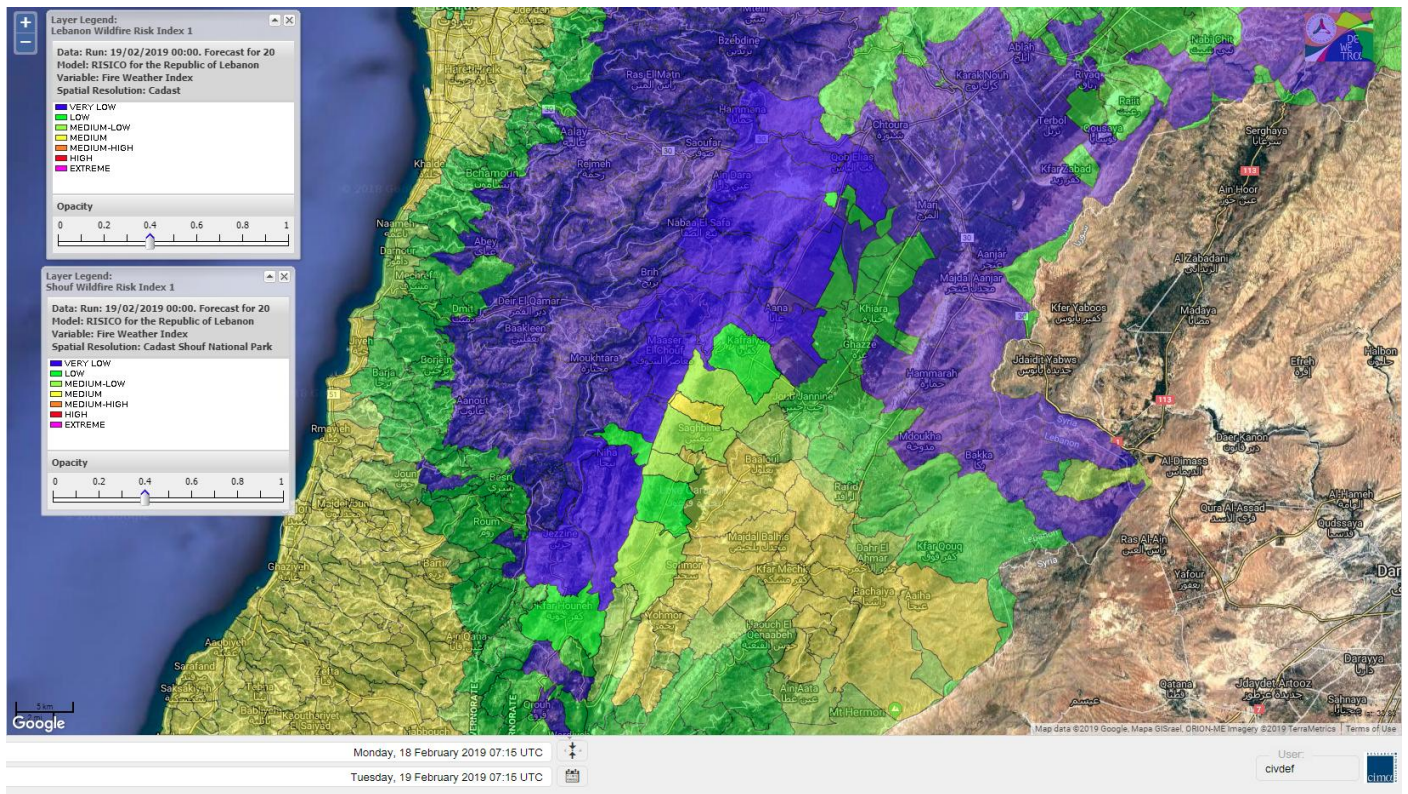
Lebanon for 21 February 2019



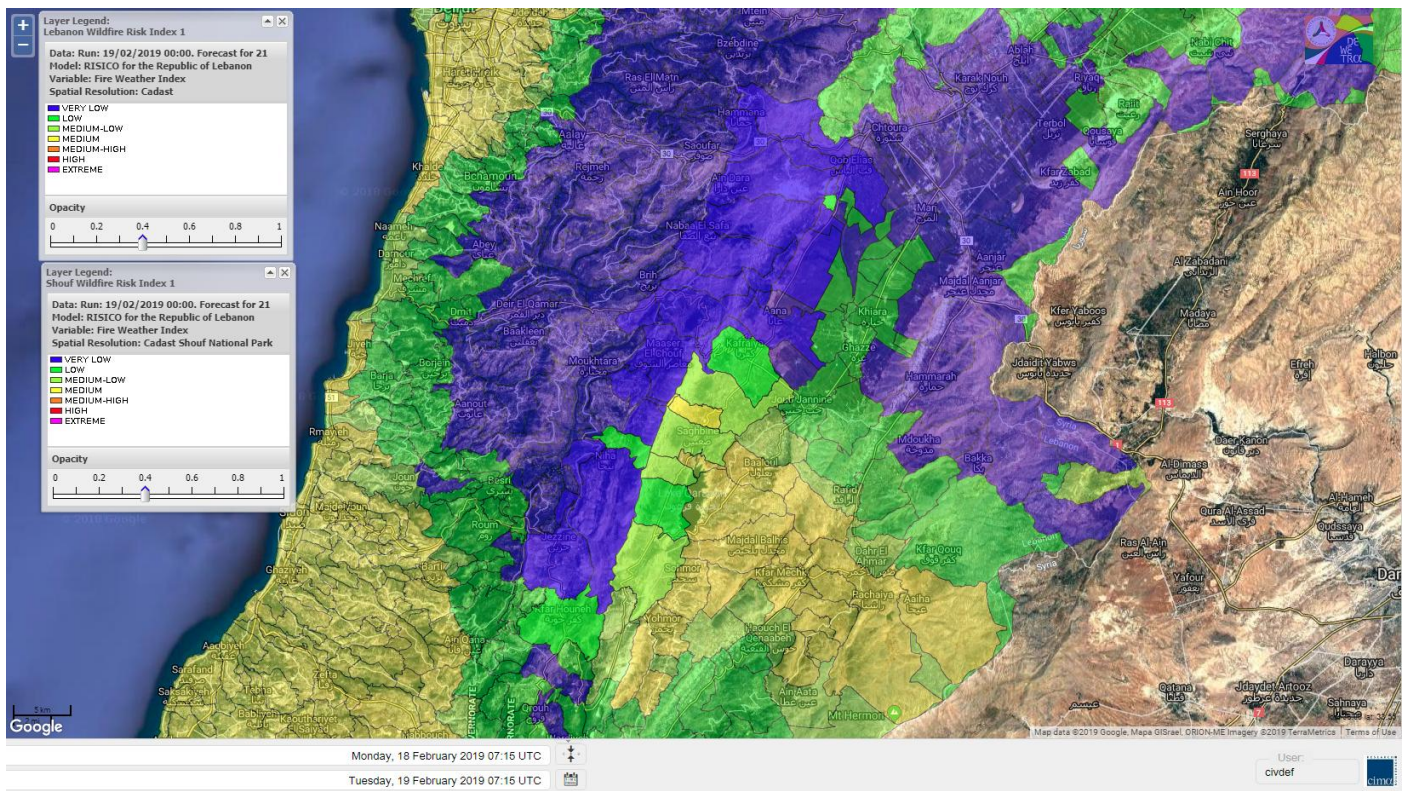
Shouf Biosphere Reserve Forecast for 19 February 2019



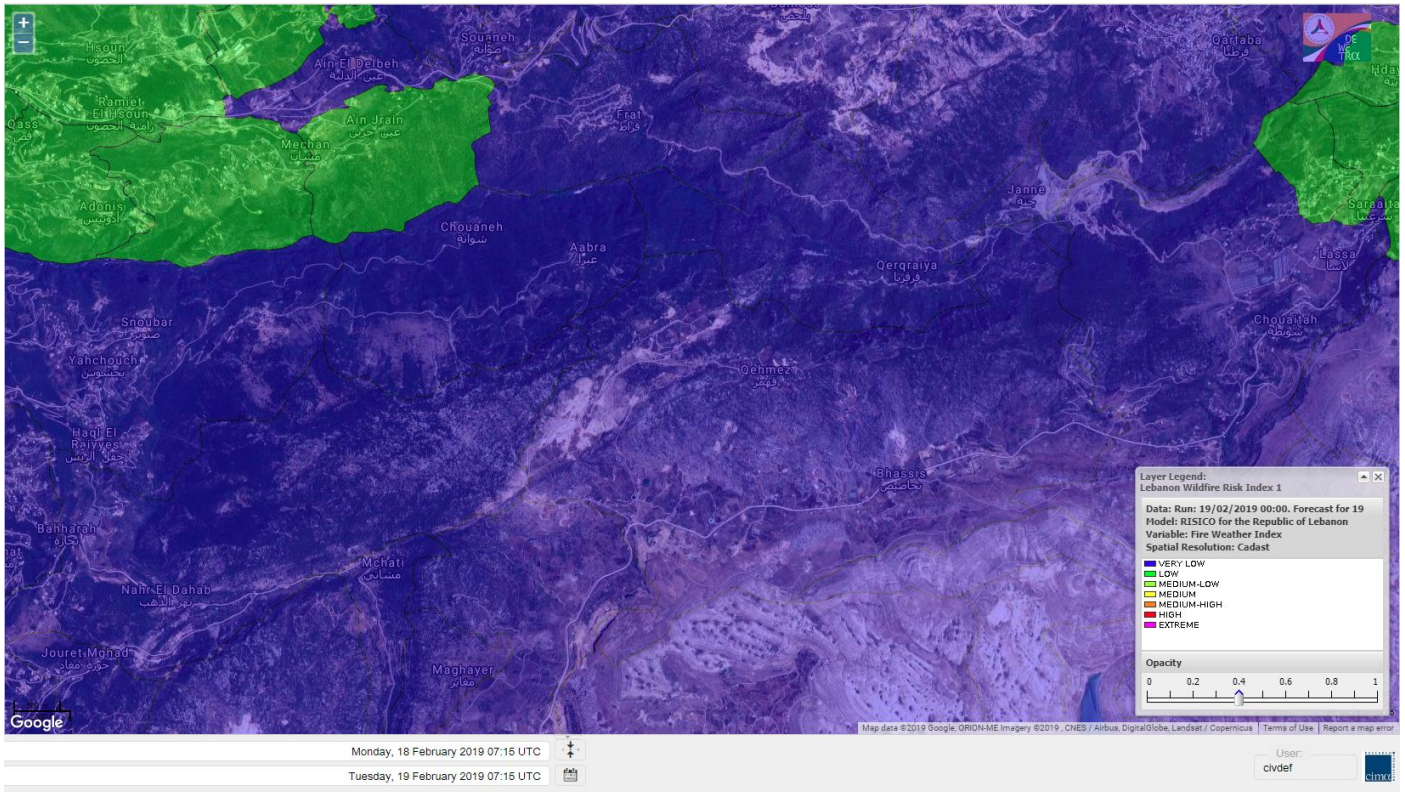
Shouf Biosphere Reserve Forecast for 20 February 2019



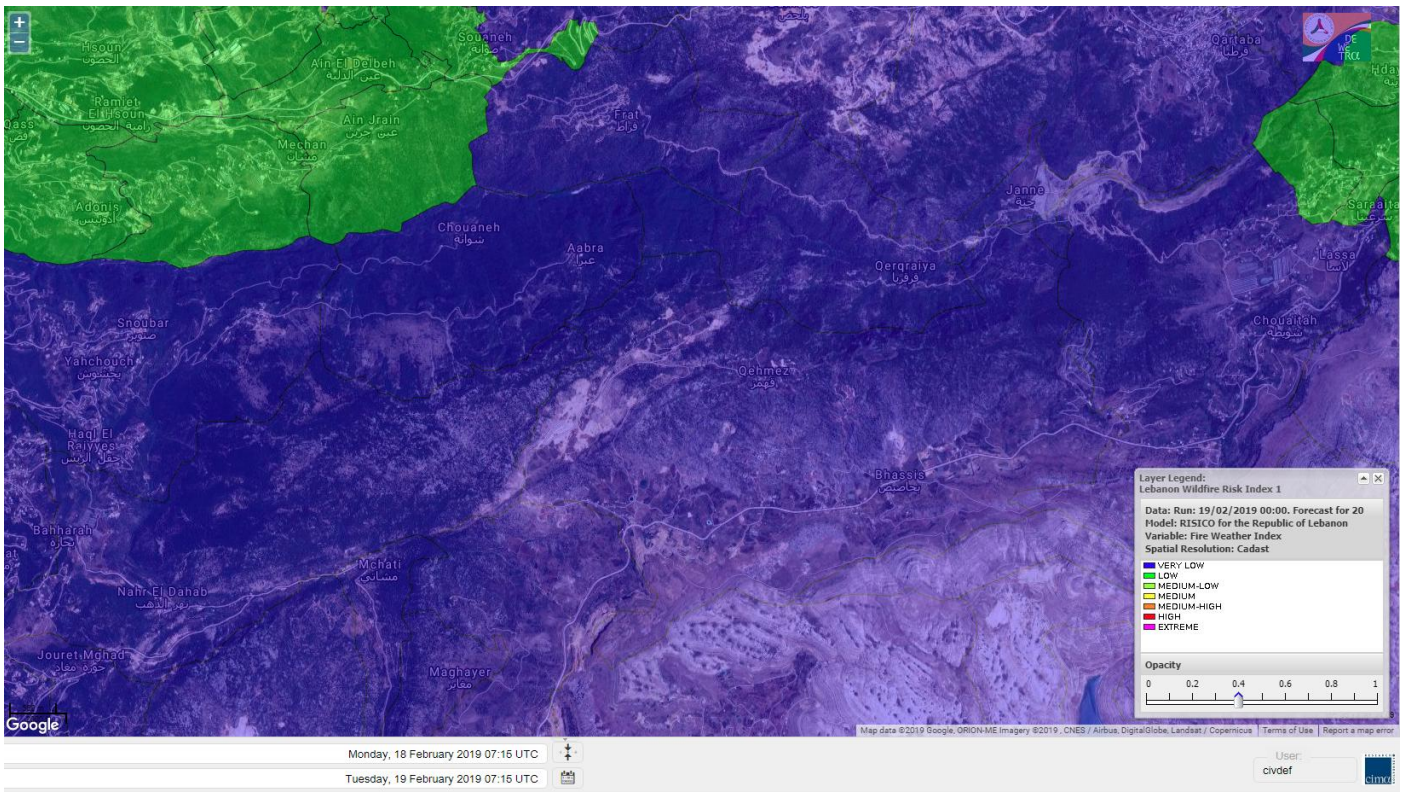
Shouf Biosphere Reserve Forecast for 21 February 2019



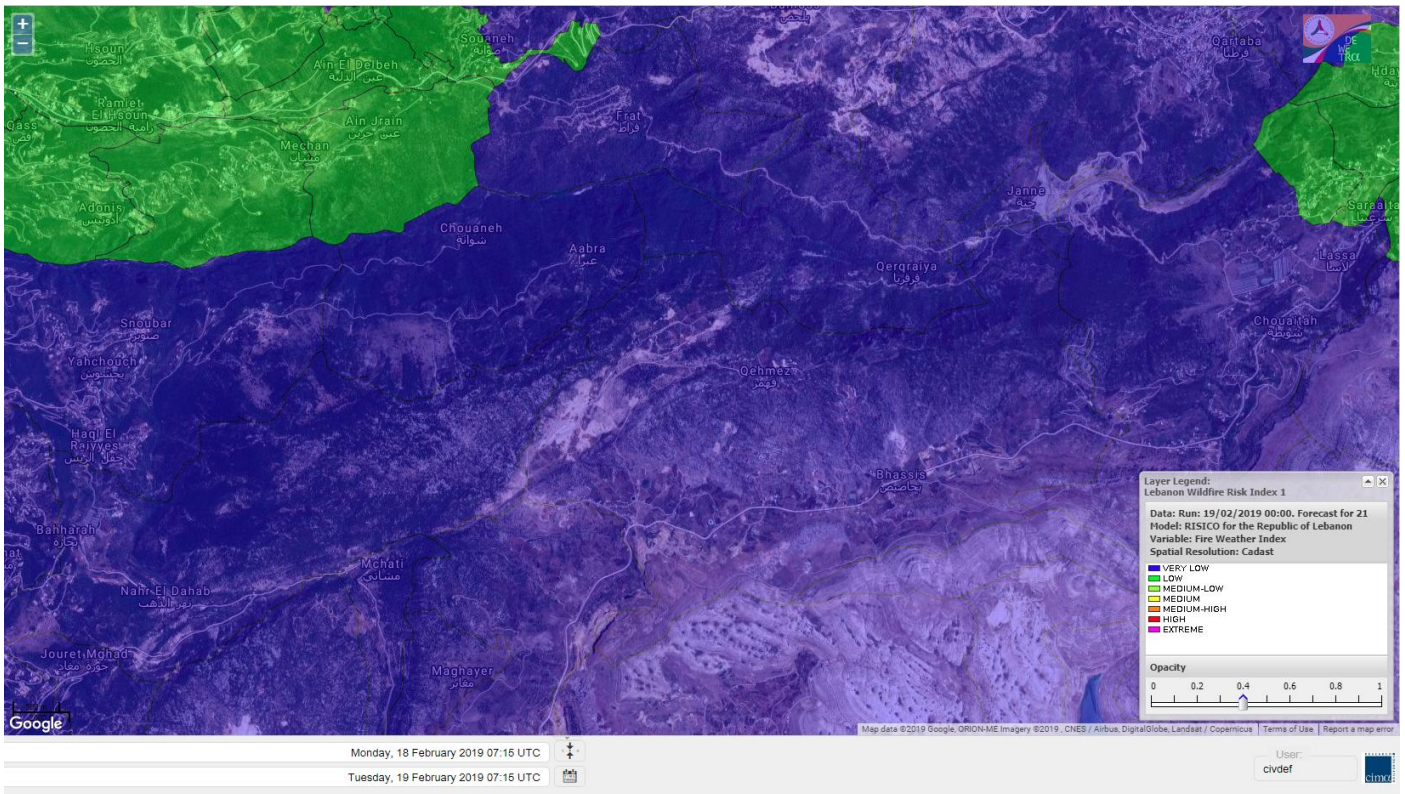
Jabal Moussa Reserve Forecast for 19 February 2019



Jabal Moussa Reserve Forecast for 20 February 2019



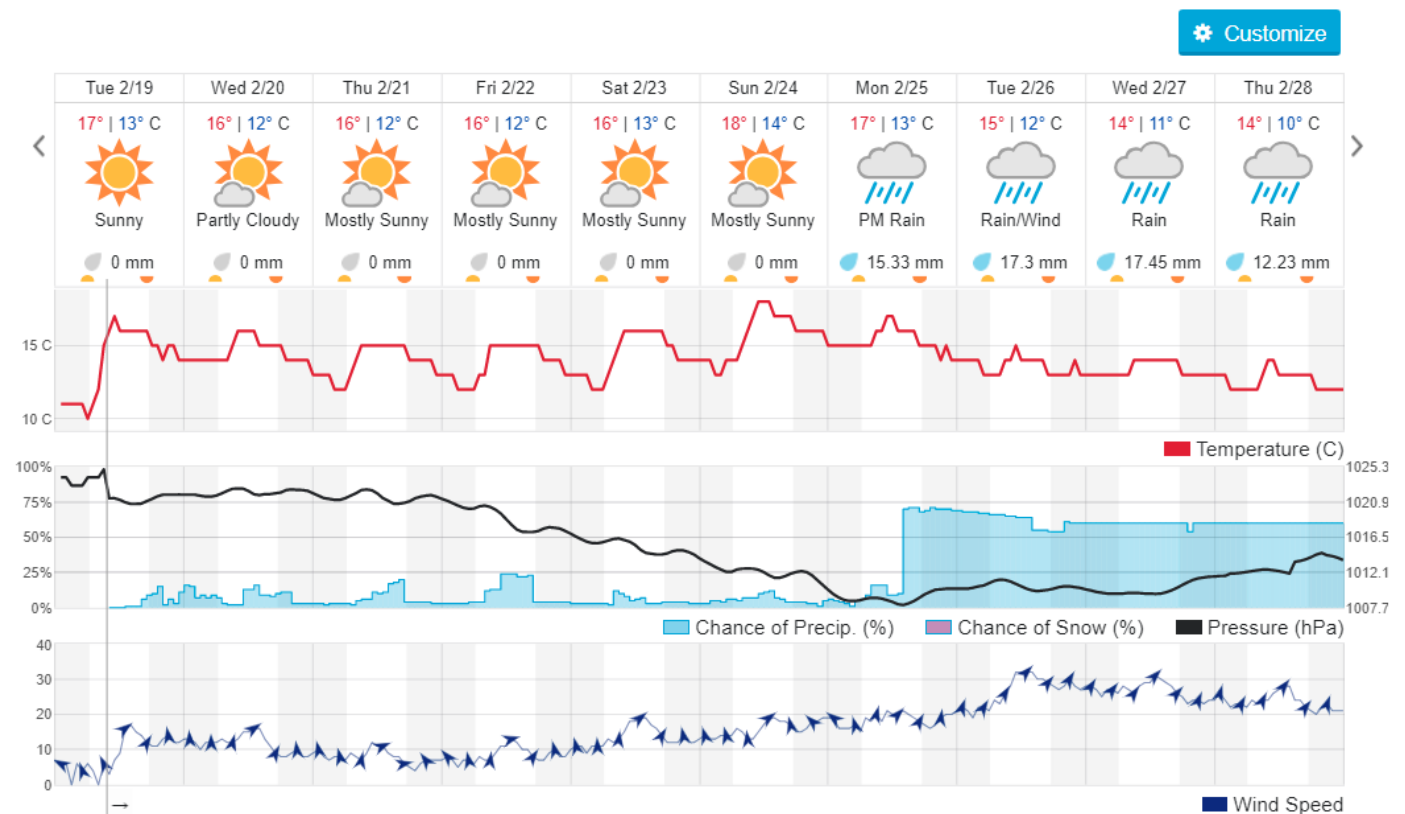
Jabal Moussa Reserve Forecast for 21 February 2019



Beirut, Lebanon

16° ACHRAFIEH, RIZK STATION | REPORT | CHANGE

TODAY HOURLY **10-DAY** CALENDAR HISTORY WUNDERMAP



Nord

Koura

Municipality	19-Feb	20-Feb	21-Feb	Municipality	19-Feb	20-Feb	21-Feb	Municipality	19-Feb	20-Feb	21-Feb
Aaba	L	VL	VL	Afsaddiq	L	VL	VL	Ain Ekrine	L	L	L
Amioun	L	L	L	Anfeh	ML	ML	L	Badbhoun	L	L	VL
Barghoun	L	L	VL	Barsa	L	VL	VL	Batroumine	L	VL	VL
Bdebba	L	VL	VL	Bechmizine	L	L	L	Bednayel El-Koura	ML	L	L
Bhabbouch El-Koura	ML	ML	ML	Bkeftine	VL	VL	VL	Bnehran	ML	ML	ML
Bqaiia El-Koura	L	VL	VL	Bsarma	L	VL	VL	Btaaboura	L	L	L
Bttram	L	VL	VL	Btouratij	L	VL	VL	Bziza	ML	ML	ML
Dar Beehtar	L	L	L	Dar Chmezzine	L	L	L	Deddeh	L	VL	VL
Deir El-Balamand	L	VL	VL	Fih	L	L	VL	Hraiche	L	ML	L
Ijdaabrine	L	L	L	Kaftoun	L	L	L	Kefraya El-Koura	L	L	L
Kfarakka	L	L	L	Kfarhata	ML	L	L	Kfarhazir	L	L	L
Kfarkahel	L	VL	VL	Kfarsaroun	L	L	L	Kosba	L	L	L
Mejdel el-Koura	L	L	L	Nakhle	L	VL	VL	Qalhat	L	L	VL
Ras Masqa	L	VL	VL	Rechdibbine	L	L	L	Zakroun	L	L	VL
Zgharta El-Mtaouile	M	M	M								

Bcharre

Municipality	19-Feb	20-Feb	21-Feb	Municipality	19-Feb	20-Feb	21-Feb	Municipality	19-Feb	20-Feb	21-Feb
Aabdine	ML	ML	ML	Bane	L	L	L	Barhelioun	ML	ML	ML
Bazouone	L	VL	VL	Becharre	L	L	L	Beit Menzer	L	L	L
Billa	ML	ML	ML	Blaouza	L	L	L	Bqaa Kafra	L	VL	VL
Bqerqacha	L	VL	VL	Breissat	L	L	L	Dimane	L	VL	VL
Hadath El Jobbeh	L	L	L	Hadchit	VL	VL	VL	Hasroun	L	L	L
Mazraat Aassaf	M	M	M	Mazraat Bani Saab	ML	ML	ML	Mchaa El-Jobbeh	L	L	L
Metrit	M	M	M	Moghr El-Ahoual	ML	ML	ML	Ouadi Qannoubine	L	L	L
Qanat	L	L	L	Qnayouer	L	L	L	Tourza	ML	ML	ML

Batroun

Municipality	19-Feb	20-Feb	21-Feb	Municipality	19-Feb	20-Feb	21-Feb	Municipality	19-Feb	20-Feb	21-Feb
Aabrine	ML	ML	ML	Aalali	ML	ML	ML	Aartiz	ML	ML	ML
Abdelli	M	M	M	Ajdabra	M	ML	ML	Assia	M	M	M
Basbina	L	L	L	Batroun	ML	ML	ML	Bcheleh	M	M	M
Bechtoudar	M	M	M	Beit Chlala	M	M	M	Beit Kassab	M	M	M
Bijdarfil	ML	L	L	Bqesmaya	L	L	L	Chatine	L	L	L
Chebtin	ML	ML	ML	Chekka	L	L	VL	Daael	M	M	M
Dahr Abi Yaghi	VL	VL	VL	Daraya El-Batroun	ML	ML	ML	Deir Billa	M	M	M
Deir Kfifane	L	L	L	Deir Mar Youhanna EL	M	M	M	Deir Mar Youssef Jra	ML	ML	ML
Douma	ML	ML	ML	Douq	ML	ML	ML	Eddeh El-Batroun	ML	ML	ML
Ftihat El-Batroun	M	M	M	Ghouma	L	L	L	Hadtoun	L	ML	ML
Hamat	M	ML	ML	Harbouna	M	M	M	Hardine	M	M	M
Helta	ML	ML	ML	Hery	L	L	L	Jebila	M	M	M
Jrabta El-Batroun	M	M	M	Jrane El-Batroun	L	L	L	Kfar Aabida	L	L	L
Kfar Halda	M	M	M	Kfarb Shlaimane	M	M	M	Kfarhatna	L	L	L
Kfarhay	L	L	L	Kfarhelos	M	M	M	Kfifane	ML	ML	ML

Kfour El Arabi	L	L	L	Koubba	ML	ML	ML	Kour	ML	ML	ML
Mar Mama	VL	VL	VL	Masrah	VL	VL	VL	Mehmarch	ML	ML	ML
Mrah Chdid	L	L	L	Mrah El Ziyat	ML	ML	ML	Mrah El-Hajj	ML	ML	ML
Nahle El-Batroun	M	M	M	Niha El-Batroun	L	L	L	Oujah El-Hajjar	ML	ML	ML
Ouata Houb	L	L	L	Qatnaaoun	M	M	M	Racha	M	M	M
Rachana	L	L	L	Rachkida	L	L	L	Ram El-Batroun	VL	VL	VL
Ras Nahhach	M	M	M	Selaata	L	L	L	Sghar	L	L	L
Smar Jbayl	L	L	L	Sourat El-Batroun	ML	ML	ML	Tannourine El-Faouqa	L	L	L
Tannourine Et-Tahta	L	L	L	Thoum	L	L	L	Toula El-Batroun	ML	M	M
Zan	ML	ML	ML								

Zgharta

Municipality	19-Feb	20-Feb	21-Feb	Municipality	19-Feb	20-Feb	21-Feb	Municipality	19-Feb	20-Feb	21-Feb
Aachach	L	L	VL	Aalma	L	L	VL	Aarde	L	VL	VL
Aintourine	L	L	L	Arabet Qozhaya	L	L	L	Arde	L	L	VL
Arjis	L	VL	VL	Asnoun	VL	VL	VL	Ayto	L	L	L
Basloukit	VL	VL	VL	Bchannine	L	VL	VL	Besebeel	L	VL	VL
Bhairat Toula	VL	VL	VL	Bnachee	L	L	L	Boussit	L	L	VL
Danha	VL	VL	VL	Daraiya Zgharta	L	VL	VL	Deir Jdeide	VL	VL	VL
Ehden	L	L	L	Halan	L	L	VL	Hariq Zgharta	VL	VL	VL
Houakir	VL	VL	VL	Hraiqis	VL	L	VL	Iaal	L	VL	VL
Ijbaa	L	VL	VL	Karm Saddeh	L	L	L	Kfarchakhna	L	VL	VL
Kfardlaqous	VL	VL	VL	Kfarfou	L	L	L	Kfarhata Zgharta	VL	VL	VL
Kfarhoura	L	VL	VL	Kfarsghab	VL	VL	VL	Kfaryachit	VL	VL	VL
Kfarzaina	VL	VL	VL	Khaldiye	VL	VL	VL	Mazraat Ajbeaa	L	VL	VL
Mazraat Et-Teffah	L	VL	VL	Mazraat Jneid	VL	VL	VL	Mejdlaia Zgharta	L	L	VL
Merh Kfarsghab	L	VL	VL	Miryata	L	L	VL	Miziara	L	VL	VL
Mzraat Kefraya	L	L	VL	Qorah Bach	VL	VL	VL	Rachiine	VL	VL	VL
Ras Kifa	L	L	L	Sakhra	L	VL	VL	Sebhel Zgharta	L	L	L
Serhel	L	L	L	Tallet Zgharta	L	VL	VL	Toula Zgharta	L	VL	VL
Zgharta	L	VL	VL								

Minieh-Denniye

Municipality	19-Feb	20-Feb	21-Feb	Municipality	19-Feb	20-Feb	21-Feb	Municipality	19-Feb	20-Feb	21-Feb
Aasaymout	L	L	VL	Aaymar	VL	VL	VL	Aazki	L	L	VL
Ain El-Tineh-Miniyeh	VL	VL	VL	Assoun	VL	VL	VL	Bakhaaoun	VL	VL	VL
Bchennata	L	VL	VL	Bechehhara	VL	VL	VL	Beddawi	L	L	VL
Behouaita	VL	VL	VL	Beit El Foqss	VL	VL	VL	Beit Haouik	VL	VL	VL
Beit Zoud	VL	VL	VL	Bekaasafrine	L	L	L	Borj El Yahoudiyeh	L	L	VL
Bqarsouna	L	VL	VL	Btermaz	L	L	VL	Debaael	L	L	VL
Deir Ammar	L	L	VL	Deir Nbouh	L	VL	VL	Haouaret-Miniyeh	VL	VL	VL
Haql el Azimeh	VL	VL	VL	Harf El Siyad	VL	VL	VL	Hazmiye-Miniyeh	VL	VL	VL
Izal	L	VL	VL	Jarjour	VL	VL	VL	Jayroun	VL	VL	VL
Kahf El-Malloul	L	VL	VL	Karm El-Moher	L	VL	VL	Kfar Binine	VL	VL	VL
Kfarchalane	VL	VL	VL	Kfarhabou	VL	VL	VL	Kharroub-Miniyeh	VL	VL	VL
Mazraat El-Kreme	VL	VL	VL	Mazraat Ketrane	VL	VL	VL	Merkebta	L	L	VL
Minyeh	L	L	VL	Mrah El Sfirat	VL	VL	VL	Mrah Sraj	VL	VL	VL
Mrebbine	L	VL	VL	Nabi Youcheaa	L	L	VL	Nemrine	L	VL	VL

Qarhaiya	L	L	VL	Qarne	L	L	VL	Qarsita	VL	VL	VL
Qattineh-Miniyeh	VL	VL	VL	Qemmamine	VL	VL	VL	Qraine	VL	VL	VL
Raouda-Aadoua	L	L	VL	Rihaniyet-Miniyeh	L	L	VL	Sfireh	VL	VL	VL
Sir Ed-Danniyeh	VL	VL	VL	Tarane	VL	VL	VL	Terbol-Miniyeh	L	L	VL
Zaghartaghriine	L	VL	VL	Zouq Bhannine	L	L	VL				

Nabatiye

Nabatiye

Municipality	19-Feb	20-Feb	21-Feb	Municipality	19-Feb	20-Feb	21-Feb	Municipality	19-Feb	20-Feb	21-Feb
Aabba	ML	ML	ML	Aazzi	M	M	M	Adchit El-Chqif	L	L	L
Ain Bou Swar	L	L	L	Ain Kana	ML	M	M	Ali El-TaHER	L	VL	VL
Ansar	M	M	M	Arab Salim	ML	ML	ML	Arnoun	VL	VL	VL
Bfaroue	M	M	M	Breyqaah	L	L	L	Charqiyeh	M	M	M
Choukine	L	VL	VL	Deir El Zahrani	M	M	M	Doueir El-Nabatiyeh	M	M	M
Habbouch El-Nabatiye	M	M	M	Hamra El-Nabatiyeh	VL	VL	VL	Harouf El-Nabatiyeh	ML	ML	ML
Hmaile	M	M	M	Houmin El Faouqa	M	M	M	Houmin El Tahta	M	M	M
Jarjough	L	L	L	Jbaah El-Nabatiyeh	L	L	L	Jebchit	L	L	L
Kfar Djal El-Nabatiy	L	VL	VL	Kfar Remmane	L	L	L	Kfar Sir	VL	VL	VL
Kfar Tebnit	VL	VL	VL	Kfarfila	M	M	M	Kfour El-Nabatieh	M	M	M
Mayfadoun	VL	VL	VL	Mazraat Bsaffour	M	M	M	Mazraat Chalbaal	M	M	M
Mazraat Dmoul	ML	ML	ML	Mazraat El Khreibeh	M	M	M	Mazraat El-Bayad El-	M	M	M
Mazraat Kfarjaouz	M	M	M	Mazraat Qalaat Meiss	L	L	L	Nabatiyeh El-Fawka	L	VL	VL
Nabatiyeh Et-Tahta	L	L	L	Namiriyeh	M	M	M	Qaaqaaiyet El Jisr	VL	VL	VL
Qossabeh El-Nabatiy	VL	VL	VL	Roumine	M	M	M	Sarba El-Nabatieh	M	M	M
Sir El-Gharbiyeh	VL	VL	VL	Toul	M	M	M	Yehmor El-Nabatiyeh	VL	VL	VL
Zaoutar El Charkiyeh	VL	VL	VL	Zaoutar El-Gharbiyeh	VL	VL	VL	Zebdine El-Nabatiyeh	L	L	L
Zefta	M	M	M								

Hasbaiya

Municipality	19-Feb	20-Feb	21-Feb	Municipality	19-Feb	20-Feb	21-Feb	Municipality	19-Feb	20-Feb	21-Feb
Aain Jarfa	VL	VL	VL	Abou Qamha	VL	VL	VL	Ain Qania	VL	VL	VL
Bourghos	VL	VL	VL	Chebaa	L	L	L	Chouaya Hasbaya	VL	VL	VL
Dellafeh	L	L	L	Fardiss Hasbaiya	L	L	L	Hasbaya	L	L	L
Hbariyeh	VL	VL	VL	Kaoukaba Hasbaiya	VL	VL	VL	Kfar Chouba	VL	VL	VL
Kfar Hamam	L	VL	VL	Kfeir El-Zait	L	L	L	Khalwat Hasbaya	L	L	L
Khreibet Hasbaiya	VL	VL	VL	Majidiyeh Hasbaiya	VL	VL	VL	Marj Ez-Zhour (Haouc	L	L	L
Meri	VL	VL	VL	Mimass	L	L	L	Rachaiya El-Fokhar	L	L	L
Salaiyeb	VL	VL	VL								

Marjayoun

Municipality	19-Feb	20-Feb	21-Feb	Municipality	19-Feb	20-Feb	21-Feb	Municipality	19-Feb	20-Feb	21-Feb
Aalmane Marjaayoun	VL	VL	VL	Aamra	VL	VL	VL	Adayseh Marjaayoun	VL	VL	VL
Adchit El-Koussair	VL	VL	VL	Ain Aarab Marjaayoun	VL	VL	VL	Bani Haiyann	VL	VL	VL
Blatt Marjaayoun	VL	VL	VL	Blida	VL	VL	VL	Borj El-Moulouk	VL	VL	VL
Boueyda Marjaayoun	VL	VL	VL	Deir Mimass	VL	VL	VL	Deir Siriane	VL	VL	VL
Dibbine	VL	VL	VL	Ebel El Saqi	L	L	L	Houla	VL	VL	VL
Houra	VL	VL	VL	Kfar Kila	VL	VL	VL	Khiam Marjaayoun	VL	VL	VL

Klayaa	VL	VL	VL	Majdel Selem	VL	VL	VL	Marjaayoun	VL	VL	VL
Markaba	VL	VL	VL	Mays El-Jabal	VL	VL	VL	Mazraat Doumiat	VL	VL	VL
Mazraat Sarada	VL	VL	VL	Mhaibib	VL	VL	VL	Qabriqha	VL	VL	VL
Qantara	VL	VL	VL	Rab El-Thalathine	VL	VL	VL	Saouaneh Marjayoun	VL	VL	VL
Talloussa	VL	VL	VL	Taybeh Matjaayoun	VL	VL	VL	Touline	VL	VL	VL

Bent Jbail

Municipality	19-Feb	20-Feb	21-Feb	Municipality	19-Feb	20-Feb	21-Feb	Municipality	19-Feb	20-Feb	21-Feb
Ain-Ebel	VL	VL	VL	Aitaroun	VL	VL	VL	Aynata Bint Jbeil	VL	VL	VL
Ayta El-Chaeb	VL	VL	VL	Ayta El-Jabal	VL	VL	VL	Beit Lif	VL	VL	VL
Beit Yahoun	VL	VL	VL	Bint Jbeil	VL	VL	VL	Borj Qalaway	VL	VL	VL
Braachit	VL	VL	VL	Chakra	VL	VL	VL	Debel	VL	VL	VL
Deir Antar	VL	VL	VL	Froun	VL	VL	VL	Ghandouriyeh Bint Jb	VL	VL	VL
Hanine	VL	VL	VL	Hariss	VL	VL	VL	Hdatha	VL	VL	VL
Jmeymeh	VL	VL	VL	Kafra Bint Jbeil	VL	VL	VL	Kfar Dounine	VL	VL	VL
Khirbet Selm	VL	VL	VL	Kounine	VL	VL	VL	Maroun El Ras	VL	VL	VL
Qalaway	VL	VL	VL	Qaouzah	VL	VL	VL	Qatmoun	VL	VL	VL
Ramya Bint Jbeil	VL	VL	VL	Rchaf	VL	VL	VL	Rmeich	VL	VL	VL
Safad Al Battikh	VL	VL	VL	Salhaneh	VL	VL	VL	Serbine	VL	VL	VL
Sultanieh Bint Jbeil	VL	VL	VL	Tibnine	VL	VL	VL	Tiri	VL	VL	VL
Yaroun	VL	VL	VL	Yater	VL	VL	VL				

Mont Liban

Jbail

Municipality	19-Feb	20-Feb	21-Feb	Municipality	19-Feb	20-Feb	21-Feb	Municipality	19-Feb	20-Feb	21-Feb
Aabeydat	VL	VL	VL	Aalita	M	M	M	Aamchit	M	M	M
Aarab El-Lahib	L	L	L	Aarasta	VL	VL	VL	Adonis Jbeil	VL	VL	VL
Afqa Jbeil	VL	VL	VL	Ain El Delbeh Jbeil	VL	VL	VL	Ain El-Ghouayba	VL	VL	VL
Ain Jrain	VL	VL	VL	Ain Kfah	L	L	L	Almat El Chemaliyat	VL	VL	VL
Almat El-Jenoubiya	VL	VL	VL	Aqoura	VL	VL	VL	Bayzoun	VL	VL	VL
Bchille Jbeil	VL	VL	VL	Bechtlida	VL	VL	VL	Behdaydat	VL	VL	VL
Beit Habbaq	VL	VL	VL	Bejjeh	VL	VL	VL	Bekhaaz	L	L	L
Berbara Jbeil	M	M	M	Bintael	VL	VL	VL	Birket Hjoula	VL	VL	VL
Blatt Jbeil	L	L	L	Boulhos	VL	VL	VL	Breyj Jbeil	VL	VL	VL
Chamat	VL	VL	VL	Chikhane	ML	ML	ML	Chmout	L	L	VL
Eddeh Jbeil	L	L	L	Ehmej	VL	VL	VL	Fatre	L	L	L
Ferhet	VL	VL	VL	Fghal	L	L	L	Frat	VL	VL	VL
Ghabat	VL	VL	VL	Ghalboun	VL	VL	VL	Gharzouz	L	L	L
Ghofrine	L	L	L	Habil	VL	VL	VL	Halate	L	L	L
Haqel	VL	VL	VL	Hbaline	L	L	L	Hboub	L	L	L
Hdeine	VL	VL	VL	Hema Er-Rehban	VL	VL	VL	Hema Mar Maroun Aann	VL	VL	VL
Hjoula	VL	VL	VL	Hosrayel	L	L	L	Hsarat	L	L	L
Hsoun	VL	VL	VL	Jaj	VL	VL	VL	Janne	VL	VL	VL
Jbeil	ML	ML	ML	Jeddeyeh Jbeil	ML	ML	ML	Jlisse	VL	VL	VL
Jouret El-Qattine	VL	VL	VL	Kfar Baal Annaya	VL	VL	VL	Kfar Kidde	L	L	L
Kfar Kouas	VL	VL	VL	Kfar Mashoun	VL	VL	VL	Kfoun	VL	VL	VL

Kharbe Jbeil	VL	VL	VL	Laqlouq	VL	VL	VL	Lassa	VL	VL	VL
Lehfed	VL	VL	VL	Maad	VL	VL	VL	Mar Sarkis	VL	VL	VL
Mastita	L	L	L	Mayfouq	L	L	L	Mazraat El Siyad	VL	VL	VL
Mazraat El-Maaden	VL	VL	VL	Mechane	VL	VL	VL	Mechmech Jbeil	VL	VL	VL
Mehrin	L	L	L	Mejdel El-Akoura	VL	VL	VL	Mghayreh Jbeil	L	L	L
Mounsef	ML	M	M	Nahr Ibrahim	M	M	M	Qahmez	VL	VL	VL
Qartaba	VL	VL	VL	Qartaboun	L	L	L	Qattara Jbeil	VL	VL	VL
Qorqraya	VL	VL	VL	Ramout	VL	VL	VL	Ras Osta	VL	VL	VL
Rihane Jbeil	L	L	L	Sakiet El-Khayt	VL	VL	VL	Saqi Richmaya	VL	VL	VL
Sebrine	VL	VL	VL	Seraita	VL	VL	VL	Souane Jbeil	VL	VL	VL
Tadmor	VL	VL	VL	Tartej	VL	VL	VL	Torzaiya	VL	VL	VL
Yanouh Jbeil	L	L	L	Zibidine Jbeil	L	L	L				

El Metn

Municipality	19-Feb	20-Feb	21-Feb	Municipality	19-Feb	20-Feb	21-Feb	Municipality	19-Feb	20-Feb	21-Feb
Aain El-Qabu	VL	VL	VL	Aain El-Qach	VL	VL	VL	Aain El-Teffaha	VL	VL	VL
Aain el-Safssaf El-M	VL	VL	VL	Abou Mizane	VL	VL	VL	Ain Aar	VL	VL	VL
Ain Alaq	VL	VL	VL	Ain El-Kharroube	VL	VL	VL	Ain El-Sendianeh	VL	VL	VL
Ain El-Zeitoune	VL	VL	VL	Ain Saadeh	L	L	L	Aintoura El-Matn	VL	VL	VL
Amaret Chalhoub	M	M	M	Antelias	M	M	M	Atchaneh	VL	VL	VL
Ayroun	VL	VL	VL	Baabdat	VL	VL	VL	Baouchariyeh	M	M	M
Baskinta	VL	VL	VL	Beit Chabab	VL	VL	VL	Beit El-Chaar	L	L	L
Beit El-Kekko	VL	VL	VL	Beit Mery	L	L	L	Bhersaf	VL	VL	VL
Bikfaya	VL	VL	VL	Biyakout	M	M	M	Bnabil	VL	VL	VL
Bourj Hammoud	M	M	M	Bqennaya	M	M	M	Broummana El-Matn	VL	VL	VL
Bsalim	L	L	L	Bsifrine	VL	VL	VL	Bteghrine	VL	VL	VL
Chaouiye	L	L	L	Chouaya El-Matn	VL	VL	VL	Choueir	VL	VL	VL
Chrine	VL	VL	VL	Dahr El Sawan El-Mat	VL	VL	VL	Daychouniyeh	ML	ML	ML
Dbayeh	M	M	M	Deir Chamra	VL	VL	VL	Deir Mar Abda el Mch	L	L	L
Deir Mar Roukouz	M	M	M	Deir Tamiche	L	L	L	Dik El-Mehdi	L	L	L
Dikwaneh	M	M	M	Douar El-Matn	VL	VL	VL	Fanar	M	M	M
Fraike	L	L	L	Haret El-Ballaneh	ML	ML	ML	Hbous	VL	VL	VL
Himlaya	VL	VL	VL	Jal El Did	M	M	M	Jdeideh El-Metn	M	M	M
Jouar El-Matn	VL	VL	VL	Jouret El-Ballout	VL	VL	VL	Kaaqour	VL	VL	VL
Kfar Aaqab	VL	VL	VL	Kfertay El-Matn	VL	VL	VL	Khenchara	VL	VL	VL
Khillat El-Mtain	VL	VL	VL	Konnabat Broummana	L	L	L	Konnabat Salima	VL	VL	VL
Machraah El-Matn	VL	VL	VL	Majdel Tarchich	VL	VL	VL	Majzoub	M	M	M
Mansouriyeh El-Metn	M	M	M	Mar Boutros Karm Et-	VL	VL	VL	Mar Chaya et Mzekke	VL	VL	VL
Mar Moussa Ed-Douar	VL	VL	VL	Marjaba	VL	VL	VL	Masqa	VL	VL	VL
Mayasse	VL	VL	VL	Mazraat Deir Aoukar	M	M	M	Mazraat El-Hadirat	ML	ML	ML
Mazraat Yachouh	L	L	L	Mchikha	VL	VL	VL	Menqlet Mezher	ML	ML	ML
Mhaydseh Matn	VL	VL	VL	Mkalles	M	M	M	Mrouj	VL	VL	VL
Mtain	VL	VL	VL	Mtayleb	L	L	L	Nabay	L	L	L
Naccache	M	M	M	Ouadi Chahine	VL	VL	VL	Ouadi El-Karm El-Mat	VL	VL	VL
Ouata El-Mrouj	VL	VL	VL	Ouyoun El-Matn	VL	VL	VL	Qornet Chehwan	L	L	L
Qornet El-Hamra	L	L	L	Roumieh	L	L	L	Sfeilet Bikfaya	VL	VL	VL
Sinn El-Fil	M	M	M	Zabbougha	VL	VL	VL	Zalqa	M	M	M

Zarououn	VL	VL	VL	Zekrite	L	L	L	Zighrine El-Matn	VL	VL	VL
Zouk El-Khrab	M	M	M								

Chouf

Municipality	19-Feb	20-Feb	21-Feb	Municipality	19-Feb	20-Feb	21-Feb	Municipality	19-Feb	20-Feb	21-Feb
Aalmane El-Chouf	M	M	M	Aammiq El-Chouf	VL	VL	VL	Ain Ouzein	VL	VL	VL
Ain Qani	VL	VL	VL	Ain Zhalta	VL	VL	VL	Ainbal	VL	VL	VL
Amatour	VL	VL	VL	Anout	VL	VL	VL	Atrine	VL	VL	VL
Baadarane	VL	VL	VL	Baaqline	VL	VL	VL	Baasir	L	L	L
Barja	L	L	L	Barouk	VL	VL	VL	Bater	VL	VL	VL
Batloun	VL	VL	VL	Bayqoun	VL	VL	VL	Bchetfine	VL	VL	VL
Beiteddine	VL	VL	VL	Benouati Ech-Chouf	VL	VL	VL	Berjein	L	L	L
Bireh et Mtalleh	VL	VL	VL	Biret El-Chouf	VL	VL	VL	Bkechtine Ouel Mchei	L	L	L
Bkifa El-Chouf	L	L	L	Botme	VL	VL	VL	Bqaiaa Ech-Chouf	L	L	L
Bsaba El-Chouf	VL	VL	VL	Chammis El-Chouf	L	L	L	Chehim	L	L	L
Chemaarine	VL	VL	VL	Chourit	VL	VL	VL	Daher El-Chouf	L	VL	VL
Dalhoun	L	L	L	Damour	ML	ML	ML	Daraya El-Chouf	VL	VL	VL
Deir El-Moukhalles	VL	VL	VL	Deir Baba	L	L	L	Deir Dourit	VL	VL	VL
Deir El-Qamar	VL	VL	VL	Deir Kouche	VL	VL	VL	Dibbieh	L	L	L
Dmit	L	L	L	Fouara Jaafar	VL	VL	VL	Fraidis El-Chouf	VL	VL	VL
Ghabet Jaafar	VL	VL	VL	Gharife	VL	VL	VL	Haret Jandal	VL	VL	VL
Hasrout	VL	VL	VL	Jadra	M	M	M	Jahlieh	VL	VL	VL
Jbeih El-Chouf	VL	L	L	Jdeidet El-Chouf	VL	VL	VL	Jiyeh	M	M	M
Jleilyeh	VL	VL	VL	Jmailiyeh	M	M	M	Joun	ML	ML	ML
Kahlounie El-Chouf	VL	VL	VL	Ketermaya	L	L	L	Kfar Faqoud	VL	VL	VL
Kfar Hamal	VL	VL	VL	Kfar Him	VL	VL	VL	Kfar Katra	VL	VL	VL
Kfar Niss	VL	VL	VL	Kfar hay	VL	VL	VL	Kfarnabrakh	VL	VL	VL
Khirbet Bisri	L	L	L	Knayse El-Chouf	VL	VL	VL	Maaniyeh	L	L	L
Maasser Beiteddine	VL	VL	VL	Maasser El-Chouf	VL	VL	VL	Majdalouna	M	M	M
Majdel El-Meouch	VL	VL	VL	Mazboud	L	VL	VL	Mazmoura	VL	VL	VL
Mazraat El Chouf	VL	VL	VL	Mazraat El Daher	L	L	L	Mazraat El-Douair	VL	VL	VL
Mechref	L	L	L	Mghairie	L	L	L	Mghayrie El-Chouf	L	L	L
Moukhtara	VL	VL	VL	Mrusti	VL	VL	VL	Mtolle	VL	VL	VL
Naameh	ML	ML	ML	Niha El-Chouf	VL	VL	VL	Ouadi Abou Yousef	VL	VL	VL
Ouadi Ed-Deir	VL	VL	VL	Ouadi El-Sit	VL	VL	VL	Ouadi bnehlay	VL	VL	VL
Qraibeh	VL	VL	VL	Qreiaa	VL	VL	VL	Rmayle El-Chouf	M	M	M
Semqaniyeh	VL	VL	VL	Sibline	M	ML	ML	Sirjbeil	VL	VL	VL
Warhanieh	VL	VL	VL	Werdaniyeh	M	M	M	Zaarourieh	VL	VL	VL

Baabda

Municipality	19-Feb	20-Feb	21-Feb	Municipality	19-Feb	20-Feb	21-Feb	Municipality	19-Feb	20-Feb	21-Feb
Abadiyeh	VL	VL	VL	Ain Mouaffaq	VL	VL	VL	Araiya	L	L	L
Arbaniyeh	VL	VL	VL	Arsoun	VL	VL	VL	Baabda	M	M	M
Baalchmey	VL	VL	VL	Bmaryam	VL	VL	VL	Bourj El-Brajneh	M	M	M
Boutchay	ML	ML	ML	Bsaba Baabda	ML	ML	ML	Btekhney	VL	VL	VL
Btibyat	VL	VL	VL	Bzbeddine	VL	VL	VL	Chbeniyeh	VL	VL	VL
Chiyah	M	M	M	Chmeisset Baabda	VL	VL	VL	Chouit	VL	VL	VL
Deir El-harf	VL	VL	VL	Deir Khouna	VL	VL	VL	Dlaybeh	VL	VL	VL

Falougha	VL	VL	VL	Furn El-Chebbak	M	M	M	Hadath Beyrouth	M	M	M
Halaliyeh Baabda	VL	VL	VL	Hammana	VL	VL	VL	Haret El Sett	L	L	L
Haret Hamze	VL	VL	VL	Haret Hreik	M	M	M	Hasbaiya El-Metn	VL	VL	VL
Jouar El-Hoz	VL	VL	VL	Jouret Arsoun	VL	VL	VL	Kfar Chima	M	M	M
Kfar Selouane	VL	VL	VL	Khalouat Baabda	VL	VL	VL	Kneisset Baabda	VL	VL	VL
Laylakeh	M	M	M	Louayzeh Baabda	ML	ML	ML	Merdache	ML	ML	ML
Mzairaa Baabda	VL	VL	VL	Ouadi Chahrour El Ol	L	L	L	Ouadi Chahrour El So	L	L	L
Qalaa Baabda	VL	VL	VL	Qhraybe Baabda	VL	VL	VL	Qobbayaa	VL	VL	VL
Qornayel	VL	VL	VL	Qortada	VL	VL	VL	Qrayeh Baabda	VL	VL	VL
Qsaibeh Baabda	VL	VL	VL	Qtale Baabda	VL	VL	VL	Ras El Metn	VL	VL	VL
Ras El-Haref	VL	VL	VL	Rouayset El-Ballout	VL	VL	VL	Salima Baabda	VL	VL	VL
Tahouitat El Ghadir	M	M	M	Tarchich	VL	VL	VL	Zandouqa	VL	VL	VL

Aley

Municipality	19-Feb	20-Feb	21-Feb	Municipality	19-Feb	20-Feb	21-Feb	Municipality	19-Feb	20-Feb	21-Feb
Abey	VL	VL	VL	Aghmid	VL	VL	VL	Ain Dara	VL	VL	VL
Ain Drafil	L	L	L	Ain El Halazoun	VL	VL	VL	Ain El-Rmmaneh	VL	VL	VL
Ain Jedideh	VL	VL	VL	Ain Ksour	VL	VL	VL	Ain Onoub	L	L	L
Ain Traz	VL	VL	VL	Ainab	VL	VL	VL	Aley	VL	VL	VL
Aramoun	L	L	L	Aytat	L	L	L	Azouniyeh	VL	VL	VL
Baawerta	L	L	L	Badghan Oua Wadi Bad	VL	VL	VL	Bassatine	VL	VL	VL
Bayssour	VL	VL	VL	Bchamoun	L	L	L	Bdadoun	L	L	L
Behouara	VL	VL	VL	Bennay	VL	VL	VL	Bhamdoun El-Dayaa	VL	VL	VL
Bhamdoun El-Mhatta	VL	VL	VL	Bkhechtey	VL	VL	VL	Bleibel	L	L	L
Bmakine	VL	VL	VL	Bmehray	VL	VL	VL	Bouzrid	VL	VL	VL
Bserrine	VL	VL	VL	Bsous	VL	L	L	Btalloun	VL	VL	VL
Btater	VL	VL	VL	Chanay	VL	VL	VL	Charoun	VL	VL	VL
Chartoun	VL	VL	VL	Chemlane	VL	VL	VL	Choueifat El-Aamrous	M	M	M
Choueifat El-Oumara	M	M	M	Choueifat El-Quoubbe	M	M	M	Dakkoun	VL	VL	VL
Deir Qoubel	L	L	L	Dfoun	VL	VL	VL	Douair El Remmaneh	VL	VL	VL
Ghaboun	VL	VL	VL	Habramoun	VL	VL	VL	Homs Oua Hama	VL	VL	VL
Houmal	L	L	L	Jisr El Qadi	VL	VL	VL	Kehaleh	VL	VL	VL
Keyfoun	VL	VL	VL	Kfar Aamey	VL	VL	VL	Kommatyeh	VL	VL	VL
Maasrati	VL	VL	VL	Majdel Baana	VL	VL	VL	Mansourieh et Ain El	VL	VL	VL
Mazraat El-Nahr	VL	VL	VL	Mchakhte	VL	VL	VL	Mecherfeh	VL	VL	VL
Mejdlaya	VL	VL	VL	Mrayjat	VL	VL	VL	Ramliyah	VL	VL	VL
Rechmaya	VL	VL	VL	Rejmeh	VL	VL	VL	Remhala	VL	VL	VL
Rouaysset El Neemane	VL	VL	VL	Saoufar	VL	VL	VL	Selfaya	VL	VL	VL
Sirhmoul	VL	VL	VL	Souq El Ghareb	VL	VL	VL	Taazanieh	VL	VL	VL

Kesrouane

Municipality	19-Feb	20-Feb	21-Feb	Municipality	19-Feb	20-Feb	21-Feb	Municipality	19-Feb	20-Feb	21-Feb
Achkout	VL	VL	VL	Adma Oua Dafneh	M	M	M	Ain Ed-Delbe Kesroua	VL	VL	VL
Ain El-Rihane	L	L	L	Aintoura Kesrouane	L	L	L	Ajaltoun	VL	VL	VL
Akaybeh Kesrouane	ML	M	M	Aramoun Kesrouane	VL	VL	VL	Azra ouel Ozor	VL	VL	VL
Ballouneh	L	L	L	Batha	L	VL	VL	Bekaatat Achkout	VL	VL	VL
Bekaatat Kanaan	VL	VL	VL	Bizhel	L	L	L	Bouar	M	M	M
Bqaatouta	VL	VL	VL	Bqaq Ed-Dine	M	M	M	Bzommar	VL	VL	VL

Chahtoul	VL	VL	VL	Chnaniir	L	L	L	Chouan	VL	VL	VL
Daraya Kesrouane	VL	VL	VL	Darououn	L	L	L	Deir Baqlouch	L	VL	VL
Dlebta	L	L	L	Eghbeh	VL	VL	VL	Faraya	VL	VL	VL
Fatka	ML	ML	ML	Feytroun	VL	VL	VL	Ghazir	ML	ML	ML
Ghbaleh Kesrouane	VL	VL	VL	Ghedrass	L	L	L	Ghosta	L	VL	VL
Ghynéh	VL	VL	VL	Harharaya w Kattine	VL	VL	VL	Harissa Kesrouane	VL	VL	VL
Hayata	VL	VL	VL	Hosein	VL	VL	VL	Hrajel	VL	VL	VL
Jdeideh Ghazir	VL	VL	VL	Jeita	L	L	L	Jounieh Ghadir	ML	ML	ML
Jounieh Haret Sakhr	L	L	L	Jounieh Salel Alma	L	L	L	Jounieh Sarba	M	M	M
Jouret Bedrane	VL	VL	VL	Jouret Mhad	VL	VL	VL	Jouret Termos	VL	VL	VL
Kfar Debiane	VL	VL	VL	Kfar Tay Kesrouane	VL	VL	VL	Kfar Yassine	M	M	M
Kfour Kesrouane	L	L	L	Kharayeb Nahr Ibrahi	L	L	L	Klayaat Kesrouane	VL	VL	VL
Maarab	L	VL	VL	Maaysra Kesrouane	L	L	L	Mayrouba	VL	VL	VL
Mazraat Er-Ras	ML	ML	ML	Mazraat Mrah El-Mir	VL	VL	VL	Mchaa El Ftouh	VL	VL	VL
Mchaa Faraya	VL	VL	VL	Mchaa Kfar Dibiane	VL	VL	VL	Mghaer	VL	VL	VL
Mradiyeh	VL	VL	VL	Nahr Ed-Dahab	VL	VL	VL	Nammoura Kesrouane	L	L	L
Ouata El Jaouz	VL	VL	VL	Ouata Sillam	M	M	M	Raachine	VL	VL	VL
Rayfoun	VL	VL	VL	Safra Kesrouane	M	M	M	Shayle Kesrouane	L	L	L
Tabarja	M	M	M	Yahchouch	VL	VL	VL	Zaaytreh	L	L	L
Zeytoun	L	L	L	Zouk Mikael	M	M	M	Zouk Mosbeh	M	M	M

Baalbek_Hermel

Baalbek

Municipality	19-Feb	20-Feb	21-Feb	Municipality	19-Feb	20-Feb	21-Feb	Municipality	19-Feb	20-Feb	21-Feb
Aadous	VL	VL	VL	Aamchki	L	L	L	Aarsal	VL	VL	VL
Ain Baalbek	VL	VL	VL	Ain Bourday	VL	VL	VL	Ain El-Benye	L	L	L
Ain El-Jaouz Baalbek	VL	VL	VL	Ain El-Siya Chadoura	L	L	L	Al Khodr Baalbek	VL	VL	VL
Al Nabi Chit	VL	VL	VL	Aynata Baalbek	L	L	L	Baalbek	VL	VL	VL
Bachwat	VL	VL	VL	Barqa	VL	VL	VL	Bednayel Baalbak	L	L	L
Beit Chama	VL	VL	VL	Bijjaje	VL	VL	VL	Bouday	L	L	L
Brital	VL	VL	VL	Btadi	VL	VL	VL	Chaat	VL	VL	VL
Chaibe	L	L	L	Chlifa	VL	VL	VL	Chmestar	L	L	L
Dar El-Oussa	VL	VL	VL	Deir El-Ahmar	VL	VL	VL	Deir Mar Maroun Baal	VL	VL	VL
Douris	VL	VL	VL	Fakiha	VL	VL	VL	Hadath Baalbek	L	L	L
Ham	VL	VL	VL	Haour Taala	VL	VL	VL	Hizzine	VL	VL	VL
Hlebta	VL	VL	VL	Hosh Barada	VL	VL	VL	Hosh El Dahab	VL	VL	VL
Hosh El Snid	VL	VL	VL	Hosh El-Nabi	VL	VL	VL	Hosh El-Rafiq	VL	VL	VL
Hosh Tal Safiya	VL	VL	VL	Hrebta	L	L	L	laat	VL	VL	VL
Jebaa	VL	VL	VL	Jenta	VL	VL	VL	Kfar Dabach	VL	VL	VL
Kfar Dane	VL	VL	VL	Khraibeh El-Hermel	VL	VL	VL	Khreibet Baalbek	VL	VL	VL
Kneisset Baalbek	VL	VL	VL	Labueh	VL	VL	VL	Maarboun	VL	VL	VL
Majdaloun	VL	VL	VL	Maqneh	VL	VL	VL	Mazraat Beit Mcheik	ML	ML	ML
Misraya	VL	VL	VL	Mograq	VL	VL	VL	Nabha El-Damdoum	L	L	L
Nabi Chbay	VL	VL	VL	Nabi Osman	VL	VL	VL	Nahleh baalbek	L	L	L
Ouadi El-Oss	L	L	L	Qaa Baayoun	VL	VL	VL	Qaa Jouar Maqiye	VL	VL	VL
Qaa Ouadi El-Khanzir	L	VL	VL	Qah Baalbek	VL	VL	VL	Qarha Baalbek	VL	VL	VL

Qsarnaba	VL	VL	VL	Ram Baalbek	VL	VL	VL	Ras Baalbek El Sahl	VL	VL	VL
Ras Baalbek El-Charq	VL	VL	VL	Riha	VL	VL	VL	Saaide	VL	VL	VL
Sbouba	VL	VL	VL	Seriine El-Tahta	VL	VL	VL	Slouqi	ML	ML	ML
Taiba Baalbek	VL	VL	VL	Talia	VL	VL	VL	Taraiya	L	L	L
Temnin El Fawqa	VL	VL	VL	Temnin El-Tahta	VL	VL	VL	Tfail	L	L	L
Yahfoufa	VL	VL	VL	Yammouneh	L	L	L	Younine	VL	VL	VL
Zboud	VL	VL	VL								

Hermel

Municipality	19-Feb	20-Feb	21-Feb	Municipality	19-Feb	20-Feb	21-Feb	Municipality	19-Feb	20-Feb	21-Feb
Charbine El-Hermel	L	VL	VL	Hermel Jbab	L	VL	VL	Hermel	L	L	L
Maaysra El-Hermel	VL	VL	VL	Michaa Mrajhine	L	VL	VL	Ouadi Faara	L	VL	VL
Ras Baalbek - Ouadi	VL	VL	VL	Ras Baalbek El Gharb	L	L	L	Zighrine	L	VL	VL

Akkar

Akkar

Municipality	19-Feb	20-Feb	21-Feb	Municipality	19-Feb	20-Feb	21-Feb	Municipality	19-Feb	20-Feb	21-Feb
Aain Tinta	L	L	VL	Aaiyat	L	L	VL	Aakkar El-Aatiqa	L	L	VL
Aamar Akkar	L	L	VL	Aamar El Baykat	L	VL	VL	Aamayer	L	L	L
Aamriyet Akkar	L	L	VL	Aandqet	L	L	L	Aarmeh	L	VL	VL
Aarqa	L	L	VL	Aawaynat	L	L	VL	Aayoun Akkar	L	L	VL
Abboudiye	L	VL	VL	Ain El-Zeit	L	VL	VL	Ain Yaaqoub	L	L	VL
Akroum	L	L	L	Aridet Cheikh Zennad	L	L	VL	Baldeh w Mazraat Bal	L	L	VL
Barcha	L	VL	VL	Bardeh	L	L	VL	Bebnine	L	L	VL
Beino	L	L	VL	Beit Ayoub	L	L	VL	Beit El-Haouch	L	L	VL
Beit Mellat	L	L	VL	Beit Younes	L	VL	VL	Berbara Akkar	L	L	VL
Berqayel	L	L	VL	Bezbina	L	VL	VL	Bireh Akkar	L	L	VL
Borj	L	L	VL	Bqerezla	L	L	VL	Bzal	L	L	VL
Chane	L	L	VL	Chaqdouf	L	L	VL	Charbila	L	L	VL
Cheikh Mohammad	L	L	VL	Cheikh Taba Es-Sahl	L	L	VL	Cheikh Taba	L	L	VL
Cheikh Zennad	L	L	L	Cheikhlar	L	L	VL	Chir Hmairine	L	VL	VL
Daghle	L	L	VL	Dahr Laissine	L	L	VL	Darine	VL	VL	VL
Dawra	L	L	VL	Dawsa w Baghdadi	L	VL	VL	Dayret Nahr El-Kabir	L	L	VL
Deir Dalloum	L	L	VL	Deir Jennine	L	L	VL	Denbou	L	L	VL
Dibbabiyyeh	VL	VL	VL	Douair Aadwiyeh	L	L	VL	Fassikine	L	L	VL
Fnaydek	L	VL	VL	Fraydes Akkar	VL	VL	VL	Ghazayle	VL	VL	VL
Habchit	L	L	VL	Hakour	VL	L	VL	Halba	L	VL	VL
Haouchab	VL	VL	VL	Hayssat	L	L	VL	Haytla	VL	VL	VL
Hayzouq	L	L	VL	Hedd	L	L	VL	Hmaira Akkar	L	L	VL
Hmaiss Akkar	VL	VL	VL	Hnaider	ML	L	L	Hokr Ed-Dahri	L	L	VL
Hokr Etti	VL	VL	VL	Hokr Jouret Srar	L	VL	VL	Houaich	L	L	VL
Hrar	L	L	VL	Idbil	L	L	VL	Ilal	L	L	VL
Janine	L	VL	VL	Jdeidet El-JoumeH	L	L	VL	Jdeidet El-Kaiteh	L	L	VL
Jebraiel	L	L	VL	Kafr	VL	VL	VL	Kafr	L	VL	VL
Karm Asfour	L	L	VL	Kfar Melki Akkar	L	L	VL	Kfar Noun	L	VL	VL
Kfarharra	L	L	VL	Khalsa	L	L	VL	Kharnoubet Akkar	L	VL	VL

Khirbet Daoud Aakkar	L	L	VL	Khirbet El Remmane	L	L	VL	Khirbet Shar	L	L	VL
Khoreybet El-Jindi	VL	VL	VL	Khreibet Aakkar	L	L	VL	Kneisset Aakkar	VL	VL	VL
Kneisset Hnaider	M	M	ML	Knisse	L	VL	VL	Kroum El-Aarab	L	L	VL
Kwachra	L	VL	VL	Kweykhat	L	L	VL	Machta Hammoud	L	L	VL
Majdala	L	L	VL	Majdel Akkar	L	L	VL	Mar Touma	L	L	VL
Marlaya Melhem	L	L	VL	Mashha	L	L	VL	Massoudiye	VL	VL	VL
Mazraat Beit Ghattas	VL	VL	VL	Mazraat En-Nahriye	L	L	L	Mechmech	L	VL	VL
Memneh	VL	VL	VL	Mhammara	L	L	VL	Mighraq Aakkar	L	L	VL
Minyara	L	L	VL	Moqayteh	ML	ML	L	Mounjez	L	L	VL
Msalla	L	VL	VL	Mzeihmeh	VL	VL	VL	Nfaiseh	VL	VL	VL
Noura Et-Tahta	L	VL	VL	Ouadi El-Haour	L	VL	VL	Ouadi El-Jamous	L	L	VL
Ouyoun El-Ghizlane	L	L	VL	Qaabarine	L	L	VL	Qabaait	L	L	VL
Qachlaq	VL	VL	VL	Qantara Aakkar	L	L	VL	Qarha Aakkar	L	VL	VL
Qarqaf	L	L	VL	Qboula	L	L	VL	Qleiaat Aakkar	L	L	L
Qloud El-Baqie	L	L	VL	Qobaiyat Aakkar	L	L	L	Qobbat Chamrat	L	L	L
Qorayat	VL	VL	VL	Qornet Aakkar	L	VL	VL	Qsair Aakkar	L	VL	VL
Rahbe	L	L	VL	Rihaniyet Aakkar	L	L	VL	Rmah	L	L	VL
Rmoul	L	L	L	Saadine	L	VL	VL	Sadaqa	L	L	VL
Saidnaya	VL	VL	VL	Sammouniye	L	L	VL	Sayssouq	L	L	VL
Semmaqiye	L	L	VL	Semmaqli	L	L	VL	Sfinet El-Dreib	L	L	VL
Sfinet El-Qaitaa	L	L	VL	Sindyanet Zeidane	L	L	VL	Souaisset Aakkar	L	L	VL
Srar	VL	VL	VL	Tal Abbas El Gharby	L	VL	VL	Tal Abbas El-Charqy	L	L	VL
Tal Biret	L	L	VL	Tal Hmayra	L	VL	VL	Tal Maayan Tal Kiri	L	L	VL
Tal Sibel	L	L	VL	Tallet Chattaha	L	L	VL	Tikrit	L	L	VL
Tleil	VL	VL	VL	Tshea	L	VL	VL	Zawarib	L	L	VL
Zouq El Hosniyeh	VL	L	VL	Zouq El-Haddara	VL	L	VL	Zouq El-Hbalsa	VL	L	VL
Zouq El-Moqachrine	L	L	VL								

Sud

Sour

Municipality	19-Feb	20-Feb	21-Feb	Municipality	19-Feb	20-Feb	21-Feb	Municipality	19-Feb	20-Feb	21-Feb
Aaiyeh	VL	VL	VL	Aalma El-Chaab	VL	VL	VL	Aaytit	VL	VL	VL
Abbassiyeeh Sour	L	VL	VL	Abou Chech	VL	VL	VL	Ain Abou Abdallah	L	VL	VL
Ain Baal	VL	VL	VL	Arzoun	VL	VL	VL	Aziyeh	VL	VL	VL
Baflaya	VL	VL	VL	Barich	VL	VL	VL	Batouliyah	VL	VL	VL
Bayad	VL	VL	VL	Bazouriyeh	VL	VL	VL	Bediass	VL	VL	VL
Bestiyat	VL	VL	VL	Borj El Chemali	VL	VL	VL	Borj En-Naqoura	VL	VL	VL
Borj Rahhal	VL	VL	VL	Boustane	VL	VL	VL	Btaychiyah	VL	VL	VL
Chaaitiye	VL	VL	VL	Chameh	VL	VL	VL	Chehabiye	VL	VL	VL
Chehour	VL	VL	VL	Chihine	VL	VL	VL	Debaal Sour	VL	VL	VL
Deir Amess	VL	VL	VL	Deir Kifa	VL	VL	VL	Deir Qanoun El-Ain	VL	VL	VL
Deir Qanoun El-Naher	VL	VL	VL	Derdghaiya	VL	VL	VL	Dhayra	VL	VL	VL
Halloussiyeh	VL	VL	VL	Hamoul	VL	VL	VL	Hanaouey	VL	VL	VL
Henniye	VL	VL	VL	Hmairi Sour	VL	VL	VL	Iskandarouna Sour	VL	VL	VL
Jbal El Botom	VL	VL	VL	Jebbin	VL	VL	VL	Jennata	VL	VL	VL
Jijim	VL	VL	VL	Jouaiya	VL	VL	VL	Kneisset Sour	VL	VL	VL

Maarake	VL	VL	VL	Maaroub	VL	VL	VL	Majadel	VL	VL	VL
Majdzoun	VL	VL	VL	Mansouri Sour	VL	VL	VL	Marnba	VL	VL	VL
Marouahine	VL	VL	VL	Mazraat El-Zalloutiy	VL	VL	VL	Mazraat Mechref	VL	VL	VL
Mazraat Tayr Semhat	VL	VL	VL	Mheilib	L	VL	VL	Neffakhiyeh	VL	VL	VL
Niha Sour	VL	VL	VL	Ouadi Jilo	VL	VL	VL	Qana	VL	VL	VL
Qolaileh Sour	VL	VL	VL	Rechknayan	VL	VL	VL	Rmadiyah	VL	VL	VL
Selha Sour	VL	VL	VL	Siddiqine	VL	VL	VL	Sour	VL	VL	VL
Srifa	VL	VL	VL	Tayr Debbe	VL	VL	VL	Tayr Felsay	VL	VL	VL
Tayr Harfa	VL	VL	VL	Touayri	VL	VL	VL	Toura	VL	VL	VL
Yanouh Sour	VL	VL	VL	Yarine	VL	VL	VL	Zebqine	VL	VL	VL

Saida

Municipality	19-Feb	20-Feb	21-Feb	Municipality	19-Feb	20-Feb	21-Feb	Municipality	19-Feb	20-Feb	21-Feb
Aanqoun	M	M	M	Aaqtanit	M	M	M	Aarab Ej-Jall	M	M	M
Aarab Tabbaya	M	M	M	Abra Saida	M	M	M	Adloun	M	M	M
Adousiyeh	M	M	M	Ain-El-Deleb	M	M	M	Arzai	L	L	L
Babliyah	M	M	M	Barty	M	M	M	Bissariyeh	M	M	M
Bnaafoul	M	M	M	Bqosta	M	M	M	Bramiy	M	M	M
Daoudiyeh	M	M	M	Dareb El-Sim	M	M	M	Erkay	M	M	M
Ghassanieh	M	M	M	Ghazieh	M	M	M	Hajjeh	M	M	M
Haret Saida	M	M	M	Hartiyeh	M	M	M	Hlaliye Saida	M	M	M
Insariyat	M	M	M	Jazira Saida	L	VL	VL	Kafar Bit	M	M	M
Kaoutariyet El-Siyad	M	M	M	Kfar Chellal	M	M	M	Kfar Hatta Saida	M	M	M
Kfar Milke Saida	M	M	M	Khartoum	M	M	M	Khaziz	M	M	M
Khirbet Ed-Douair Sa	M	M	M	Khirbet El-Bassal	M	M	M	Khrayeb Saida	ML	ML	ML
Loubieh	M	M	M	Maghdouche	M	M	M	Majdelyoun	M	M	M
Matariyet El-Choumar	L	VL	VL	Matayriyeh	M	M	M	Mazraat 'Mseileh	M	M	M
Mazraat 'Snaiber	M	M	M	Mazraat Aarab Soukka	M	M	M	Mazraat Deir Taqla	M	M	M
Mazraat El Yahoudiye	ML	ML	ML	Mazraat El-Housseini	M	M	M	Mazraat El-Mhaydaleh	M	M	M
Mazraat El-Ouasta	ML	ML	ML	Mazraat Jamjim	ML	ML	ML	Mazraat Kaoutariyet	M	M	M
Mazraat Kfar Badda	M	M	M	Mazraat Oussamiyat	M	M	M	Mazraat Sari	M	M	M
Mazraat Sinai	M	M	M	Meemariyeh	M	M	M	Merouaniyeh	M	M	M
Miyeh ou Miyeh	M	M	M	Najjariyeh	M	M	M	Qaaqaiyat El-Snaouba	M	M	M
Qnarit	M	M	M	Qraiye Saida	M	M	M	Saida Ed-Dekermane	M	M	M
Saida El-Oustani	M	M	M	Saida El-Qadimeh	M	M	M	Saida Kefraya	M	M	M
Saksakiyeh	M	M	M	Salhigh Saida	M	M	M	Sarafand	M	M	M
Sfenta	M	M	M	Tafahta	M	M	M	Tanbourit	M	M	M
Tebna	M	M	M	Zaghdraiya	M	M	M	Zeita	M	M	M
Zrariyeh	L	L	L								

Jezzine

Municipality	19-Feb	20-Feb	21-Feb	Municipality	19-Feb	20-Feb	21-Feb	Municipality	19-Feb	20-Feb	21-Feb
Ain El-Mir (El Estab)	M	M	M	Anane	L	L	L	Aramta	VL	VL	VL
Ariya	VL	VL	VL	Aychiyeh	L	L	L	Azour	L	L	L
Baba	L	L	L	Bayssour Jezzine	M	M	M	Benoueteh Jezzine	VL	VL	VL
Bhannine	VL	VL	VL	Bisri	L	L	L	Bkassine	VL	VL	VL
Bouslaya	L	L	L	Btedine El-Leqech	L	L	L	Chbail	VL	VL	VL
Choualiq Jezzine	M	M	M	Dahr Ed-Deir	ML	ML	ML	Deir El Qattine	L	L	L

Demachqiyeh	VL	VL	VL	Ghabbatiyeh	VL	VL	VL	Harf Jezzine	VL	VL	VL
Hassaniyeh	M	M	M	Haytouleh	M	M	M	Haytura	VL	VL	VL
Hidab	L	L	L	Homsiyeh	VL	VL	VL	Jabal Toura	VL	VL	VL
Jarmaq	L	VL	VL	Jensnaya	M	M	M	Jernaya	M	M	M
Jezzine	VL	VL	VL	Karkha	M	M	M	Kfar Falous	M	M	M
Kfar Houna	L	L	L	Kfar Jarrah	M	M	M	Lebaa	M	M	M
Louayzet Jezzine	L	L	L	Machmouche	VL	VL	VL	Mahmoudiyeh Jezzine	L	L	L
Maknounye Jezzine	L	L	L	Maraat Ouazaiyeh	L	L	L	Mazraat Daraya	L	L	L
Mazraat El-Aarqoub	L	L	L	Mazraat El-Mathane	L	L	L	Mazraat El-Rahbane	VL	VL	VL
Mazraat Khallet Khaz	VL	VL	VL	Mazraat Louzid (Loua	VL	VL	VL	Mazraat Qrouh	VL	VL	VL
Mazraat Tamra	VL	VL	VL	Mazraat Zighrine Jez	L	L	L	Mazraat	L	L	L
Mharbiyeh	M	M	M	Midane Jezzine	VL	VL	VL	Mjeydel Jezzine	M	M	M
Mlikh	VL	VL	VL	Mrah El-Hbasse	M	M	M	Ouadi Baanqoudaine	M	M	M
Ouadi El-Laymoun	M	M	M	Ouardiyeh	VL	VL	VL	Qabaa Jezzine	VL	VL	VL
Qatrani	VL	VL	VL	Qaytouleh	VL	VL	VL	Qtaleh Jezzine	L	L	L
Rihane Jezzine	L	L	L	Rimat	ML	ML	ML	Roum	L	L	L
Roummanet	VL	VL	VL	Sabbah	VL	VL	VL	Saydoun	L	L	L
Sfaray	L	L	L	Snaya	L	L	L	Sojoud	L	L	L
Srayri	L	L	L	Taaid	L	L	L	Wadi Jezzine	VL	VL	VL
Zhalta	VL	VL	VL								

Bekaa

West Bekaa

Municipality	19-Feb	20-Feb	21-Feb	Municipality	19-Feb	20-Feb	21-Feb	Municipality	19-Feb	20-Feb	21-Feb
Aammiq BG	VL	VL	VL	Ain El Tineh BG	ML	ML	ML	Ain Zebdeh	M	M	M
Ana	VL	VL	VL	Aytanit	L	L	L	Baaloul BG	ML	M	M
Bab Mareh	ML	ML	ML	Chouberqiye Aammiq	VL	VL	VL	Dakoue	L	VL	VL
Deir Ain El-Jaouze	M	M	M	Deir Tahniche	VL	VL	VL	Ghaza	VL	VL	VL
Harime El-Soughra	L	VL	VL	Hoch Harimeh	L	VL	VL	Jazira BG	VL	VL	VL
Jib Jennine	L	L	L	Kamed-El-Laouz	L	L	L	Kefraya BG	L	L	L
Khiara El Atika	VL	VL	VL	Khiara	L	VL	VL	Khirbet Qanafar	ML	ML	ML
Lala	ML	ML	ML	Lebbaya BG	ML	ML	ML	Loussa	M	M	M
Machghara	ML	ML	ML	Manara (Hammara) BG	VL	VL	VL	Mansoura BG	VL	VL	VL
Marej BG	VL	VL	VL	Maydoun	ML	ML	ML	Ouaqf BG	VL	VL	VL
Qaraaoun	M	M	M	Qelya	M	M	M	Raouda (Istabel)	VL	VL	VL
Saghbine	ML	ML	ML	Sohmor	M	M	M	Soltan Yacoub el Ara	L	VL	VL
Souairy	L	VL	VL	Sultan Yaacoub	VL	VL	VL	Tal Znoub	VL	VL	VL
Yehmor BG	M	M	M	Zilaya	ML	ML	ML				

Zahle

Municipality	19-Feb	20-Feb	21-Feb	Municipality	19-Feb	20-Feb	21-Feb	Municipality	19-Feb	20-Feb	21-Feb
Aanjar (Haouch Mouss	VL	VL	VL	Ablah	VL	VL	VL	Ain Kfarzabad	VL	VL	VL
Ali-El-Nahri	VL	VL	VL	Bar Elias	VL	VL	VL	Bouarej	VL	VL	VL
Cheberqiyet Tabet	VL	VL	VL	Chtaura	VL	VL	VL	Deir El Ghazal	VL	VL	VL
Delhamiyet Zahle	VL	VL	VL	Ferzol	VL	VL	VL	Haouch El-Ghanam	VL	VL	VL
Haouch Es-Siyadeh	VL	VL	VL	Haouch Hala	VL	VL	VL	Haouch Mandara	VL	VL	VL

Haouch Qayssar	VL	VL	VL	Hezerta	L	L	L	Hosh Moussa	VL	VL	VL
Jdita	VL	VL	VL	Kfarzabad	VL	VL	VL	Ksara	VL	VL	VL
Majdel Aanjar	L	VL	VL	Makssi	VL	VL	VL	Massa	VL	VL	VL
Mazraat Er-Remtaniye	L	L	L	Mrayjat Zahle	VL	VL	VL	Mzaraa Zahle	VL	VL	VL
Nabi Ayla	VL	VL	VL	Nasriyet Rizk	VL	VL	VL	Nasriyet Zahle	VL	VL	VL
Niha Zahle	VL	VL	VL	Ouadi Ed-Deloum	VL	VL	VL	Ouadi El-Arayech	VL	VL	VL
Qaa El Rim	L	L	L	Qab Elias	VL	VL	VL	Qousaya	VL	VL	VL
Rhit	VL	VL	VL	Riyak	VL	VL	VL	Saadnayel	VL	VL	VL
Taal El-Akhdar	VL	VL	VL	Taalbeya	VL	VL	VL	Taanayel	VL	VL	VL
Talamara	VL	VL	VL	Tcheflik Edde Haouch	VL	VL	VL	Tcheflik Qiqano	VL	VL	VL
Terbol Zahle	VL	VL	VL	Touaite Zahle	L	L	L	Zahle Aradi	VL	VL	VL
Zahle El-Berbara	VL	VL	VL	Zahle El-Maallaqa	VL	VL	VL	Zahle El-Midane	VL	VL	VL
Zahle Er-Rassiyeh	VL	VL	VL	Zahle Haouch El-Ouma	VL	VL	VL	Zahle Haouch El-Ouma	VL	VL	VL
Zahle Haouch Ez-Zara	VL	VL	VL	Zahle Maalaqa Aradi	VL	VL	VL	Zahle Mar Antonios	VL	VL	VL
Zahle Mar Elias	VL	VL	VL	Zahle Mar Gerios	VL	VL	VL	Zahle Saydet En-Naja	VL	VL	VL
Zebdoul	VL	VL	VL								

Rachaiya

Municipality	19-Feb	20-Feb	21-Feb	Municipality	19-Feb	20-Feb	21-Feb	Municipality	19-Feb	20-Feb	21-Feb
Ain Arab Rachaiya	L	L	L	Ain Ata	ML	ML	ML	Ain Harche	ML	M	M
Aqabe Rachaya	M	M	M	Ayha	M	M	M	Ayta El Fokhar	L	VL	VL
Bakifa Rachaya	ML	M	M	Bakka	L	VL	VL	Beit Lahya	M	M	M
Bireh Rachaiya	L	L	L	Daher El Ahmar	ML	ML	ML	Deir El-Achayer	ML	VL	VL
Heloua Rachaiya	ML	VL	VL	Hoch El Qannabeh Rac	L	ML	ML	Kaoukaba Bou Arab	ML	M	M
Kfar Danis	L	L	L	Kfar Mechki	M	M	M	Kfar Qouq	L	L	L
Kherbet Rouha	L	L	L	Majdel Balhiss	M	M	M	Mdoukha	L	VL	VL
Mhaydseh Rachaiya	ML	M	M	Nabi Safa	ML	ML	ML	Rachaiya	ML	M	M
Rafid Rachaiya	ML	ML	ML	Selsata (Mazraat Dei	ML	VL	VL	Tannoura	M	M	M
Yanta	L	VL	VL								

Beyrouth

Beyrouth

Municipality	19-Feb	20-Feb	21-Feb	Municipality	19-Feb	20-Feb	21-Feb	Municipality	19-Feb	20-Feb	21-Feb
Achrafieh	M	M	M	Ain el-Mreisse	ML	ML	ML	Bachoura	M	M	M
Beirut Central Distr	VL	VL	VL	Marfai	L	L	L	Mazraa	M	M	M
Medaouar	M	M	M	Minet el-Hosn	L	L	L	Mwssaitbeh	M	M	M
Ras Beirut	ML	ML	ML	Rmeil	M	M	M	Saifi	L	L	L
Zqaq el-Blat	L	L	L								