

# Lebanon Fire Risk Bulletin



CIVIL DEDEFENCE

**Refer to cadast table condition.**

**Please note that the indicated temperature is at 2 meters height from the ground.**

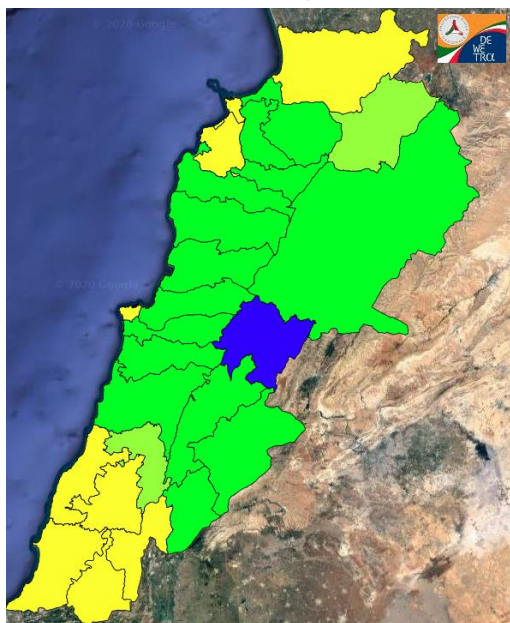
General description of potential fire risk situation

Symbol	Level of risk	Meaning and actions
VL	Very low	Very low fire risk. Controlled burning operations can be hardly executed due to high fuel moisture content. Normally wildfires self-extinguish.
L	Low	Low fire risk. Controlled burning operations can be executed with a reasonable degree of safety.
ML	Medium low	Medium-low fire risk. Controlled burning operations can be executed in safety conditions. All the fires need to be extinguished.
M	Medium	Medium fire risk. Controlled burning operations would be avoided. All the fires need to be very well extinguished.
M	Medium high	Controlled burning is not recommended. Open flame will start fires. Cured grasslands and forest litter will burn readily. Spread is moderate in forests and fast in exposed areas. Patrolling and monitoring is suggested. Fight fires with direct attack and all available resources.
H	High	Ignition can occur easily with fast spread in grass, shrubs and forests. Fires will be very hot with crowning and short to medium spotting. Direct attack on the head may not be possible requiring indirect methods on flanks. Patrolling and monitoring the territory is highly suggested.
E	Extreme	Ignition can occur also from sparks. Fires will be extremely hot with fast rate of spread. Control may not be possible during day due to long range spotting and crowning. Suppression forces should limit efforts to limiting lateral spread. Damage potential total. Patrolling and monitoring the territory is highly suggested.

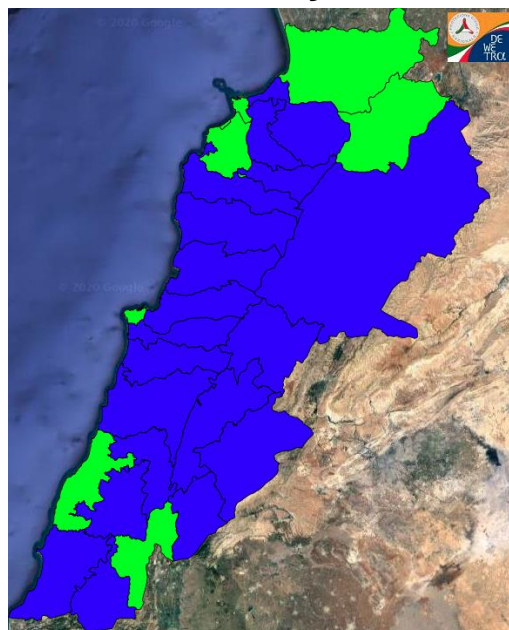
**Beirut, 19 February 2020**

# FIRE RISK INDEX

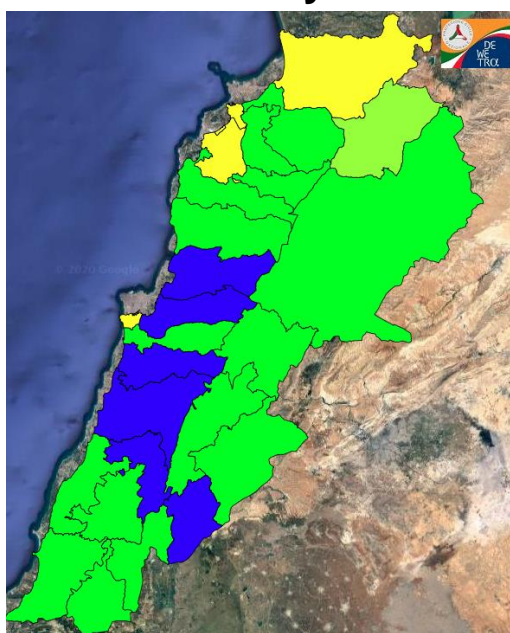
## 18 February 2020



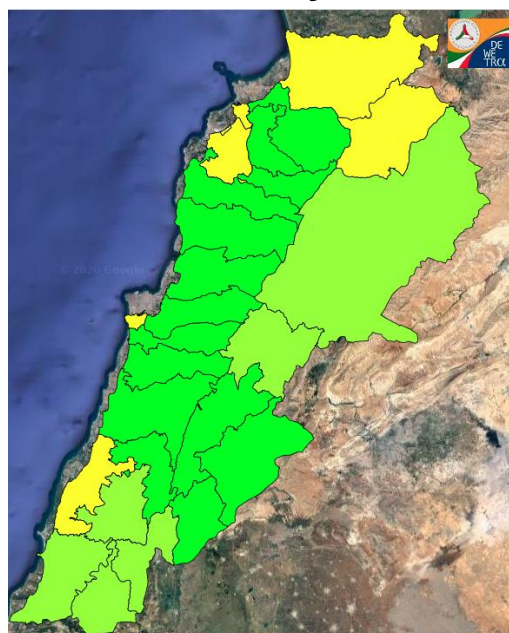
## 19 February 2020



## 20 February 2020



## 21 February 2020



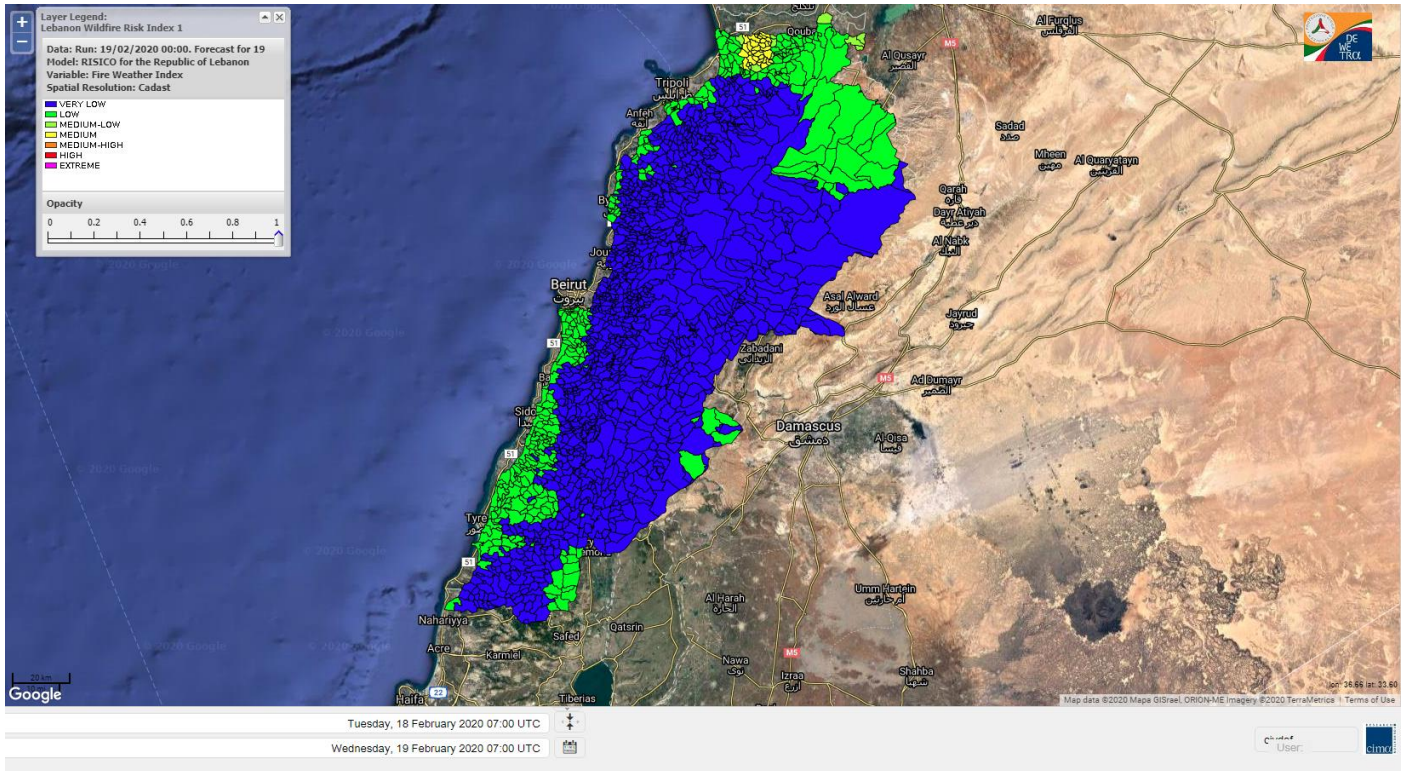
### Layer Legend:

#### Lebanon Wildfire Risk Index 1

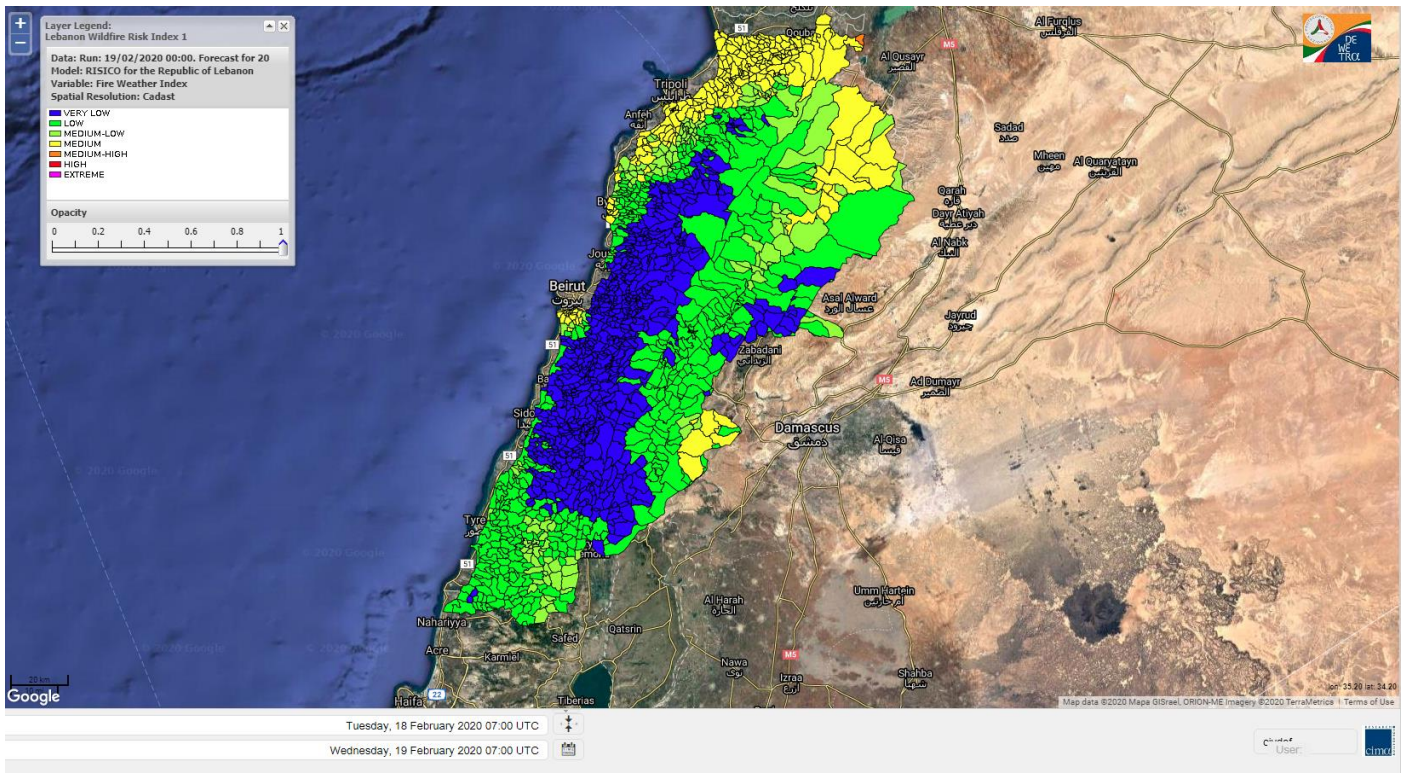
Data: Run: 19/02/2020 00:00. Forecast for 15  
Model: RISICO for the Republic of Lebanon  
Variable: Fire Weather Index  
Spatial Resolution: Caza

- VERY LOW
- LOW
- MEDIUM-LOW
- MEDIUM
- MEDIUM-HIGH
- HIGH
- EXTREME

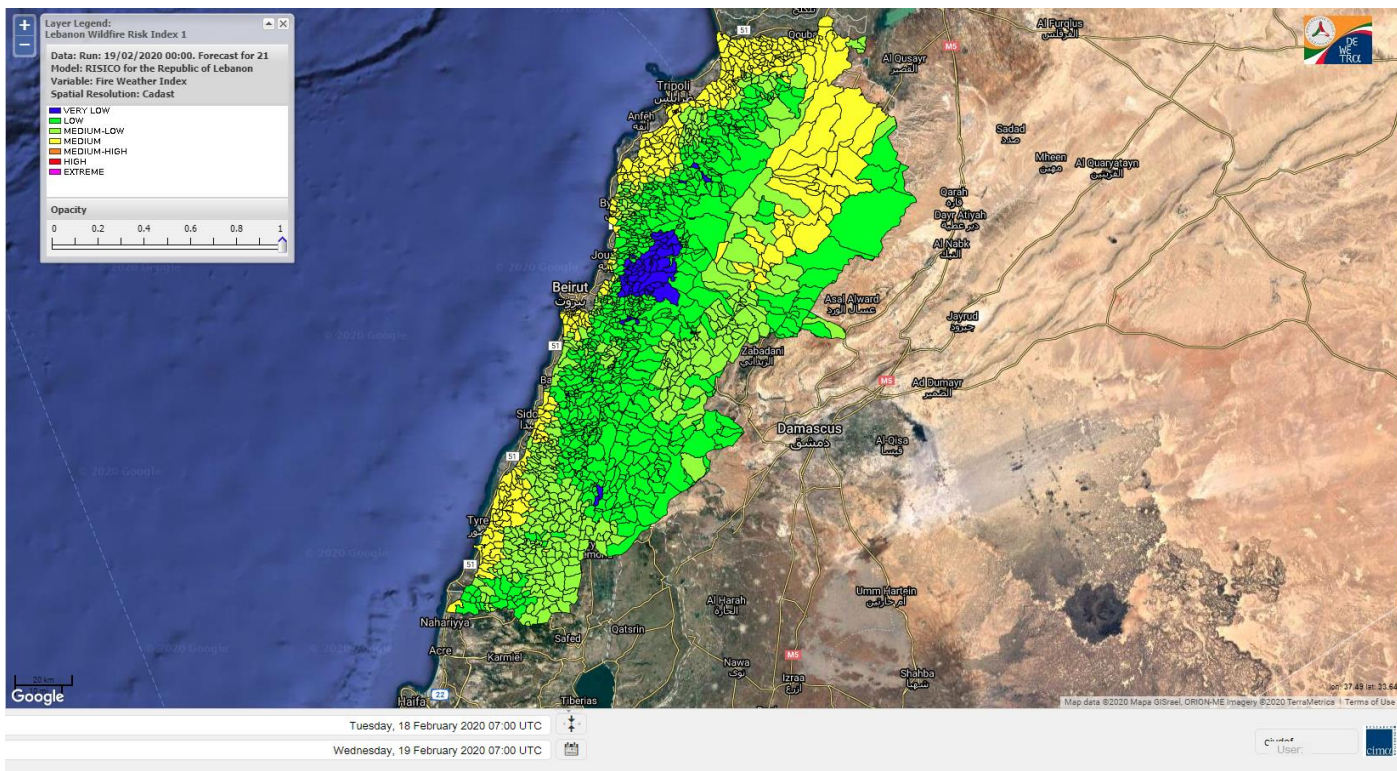
# Lebanon for 19 February 2020



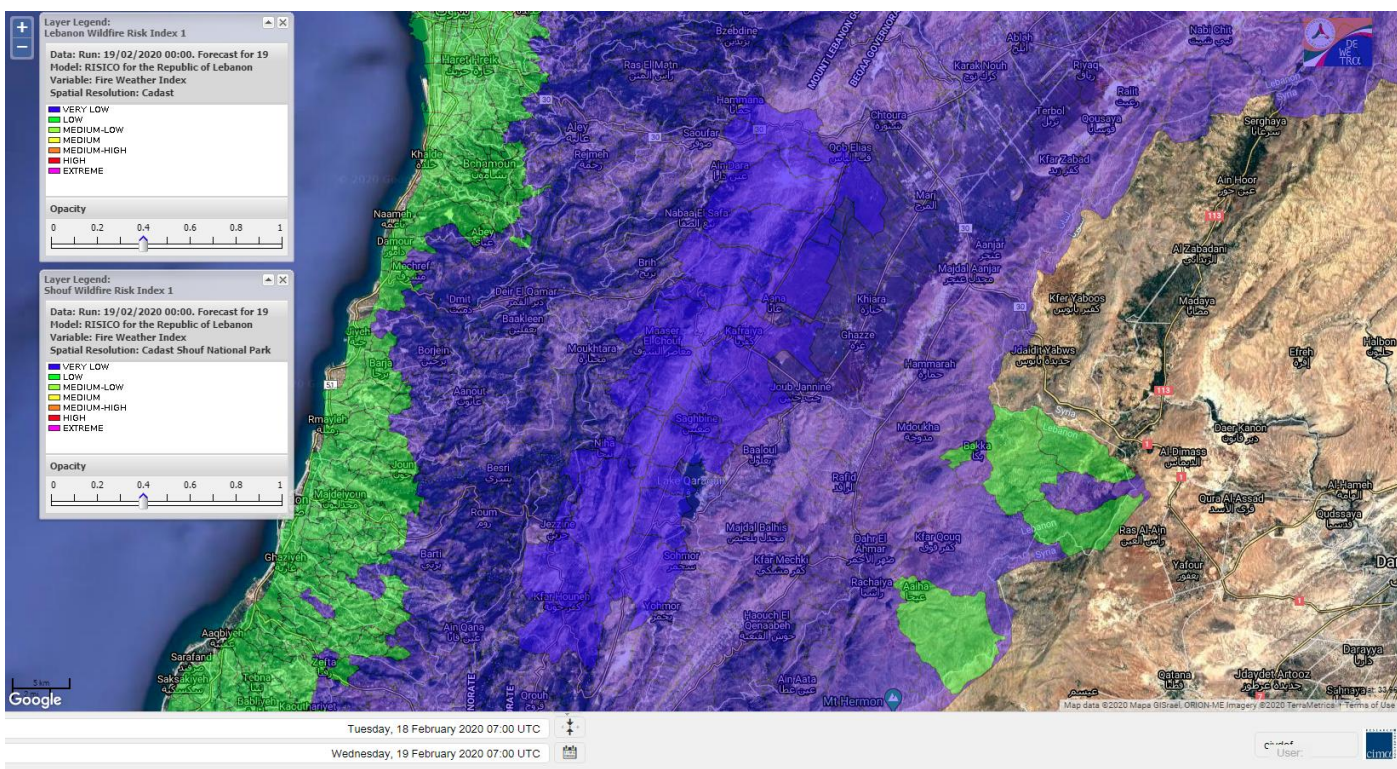
# Lebanon for 20 February 2020



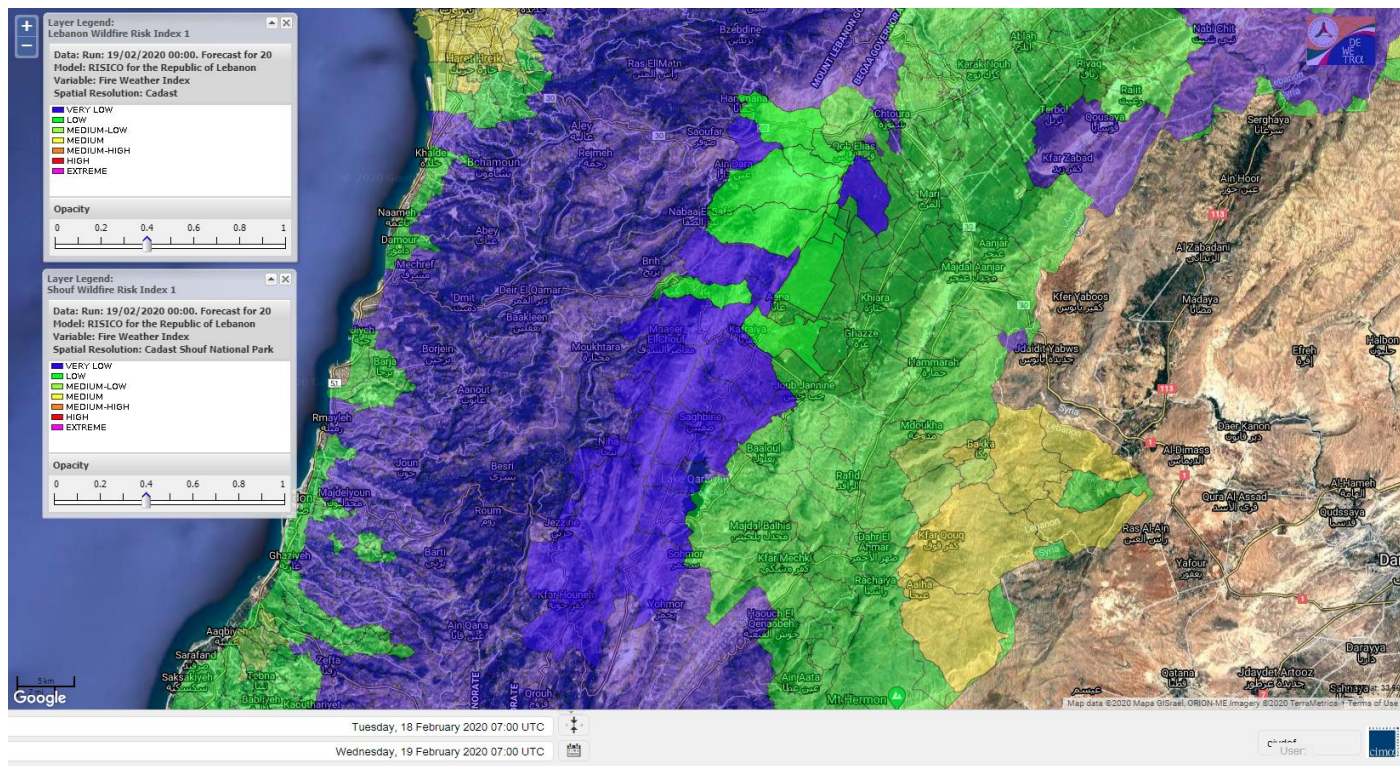
# Lebanon for 21 February 2020



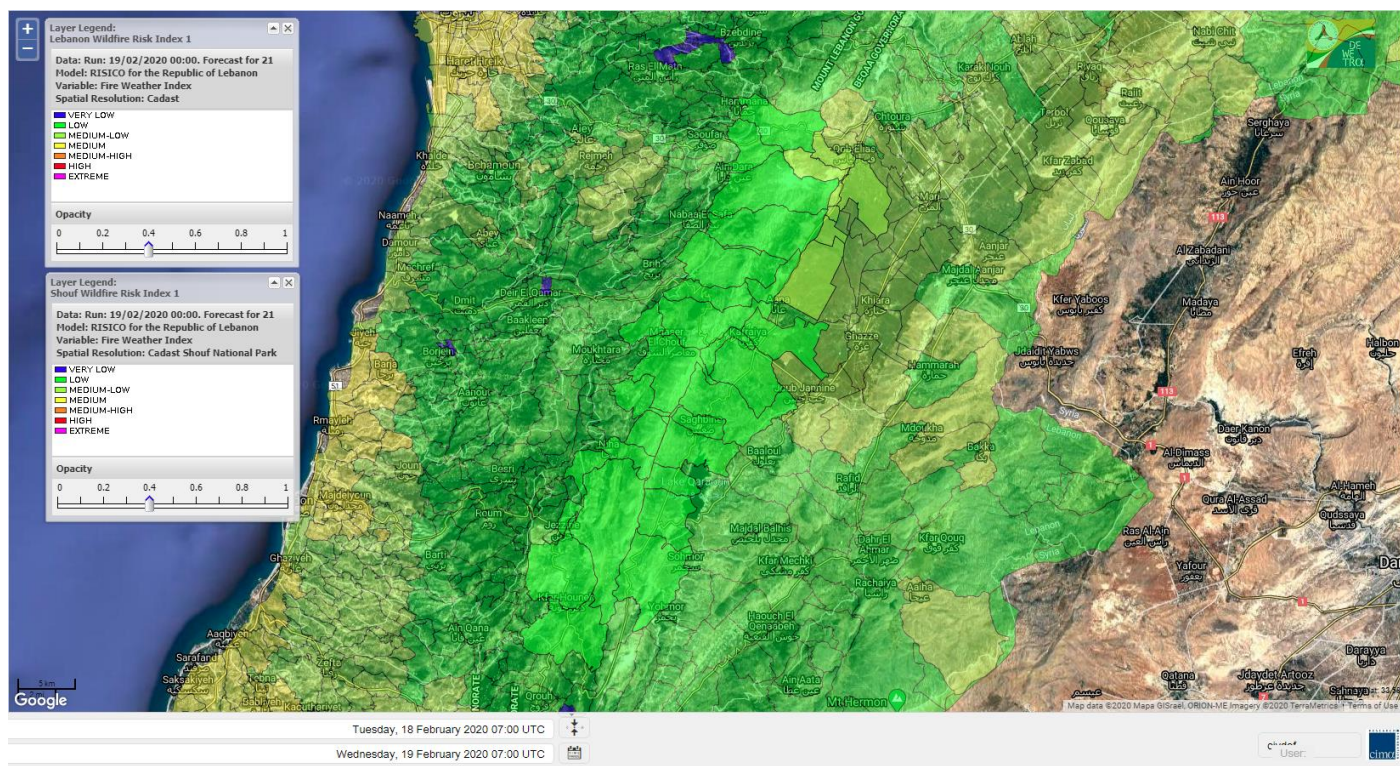
# Shouf Biosphere Reserve Forecast for 19 February 2020



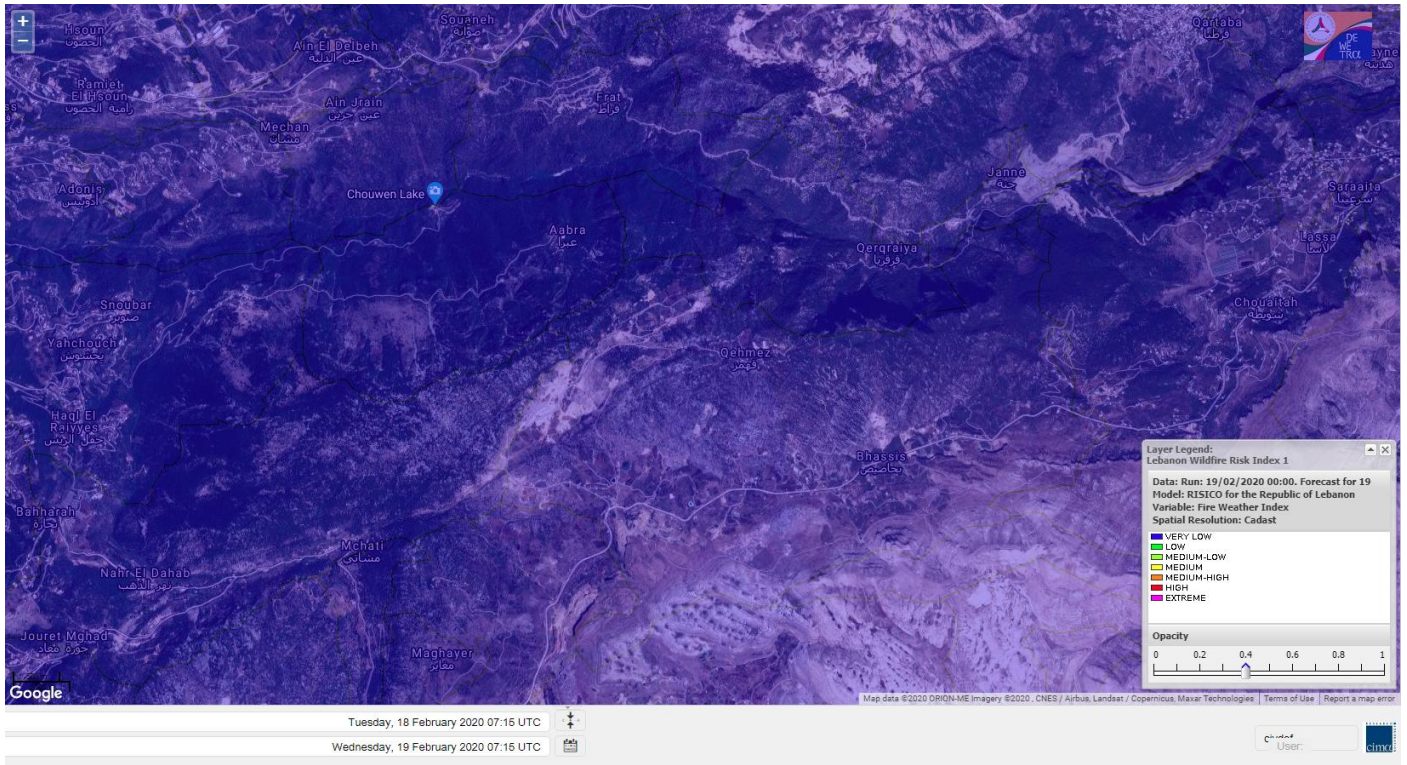
# Shouf Biosphere Reserve Forecast for 20 February 2020



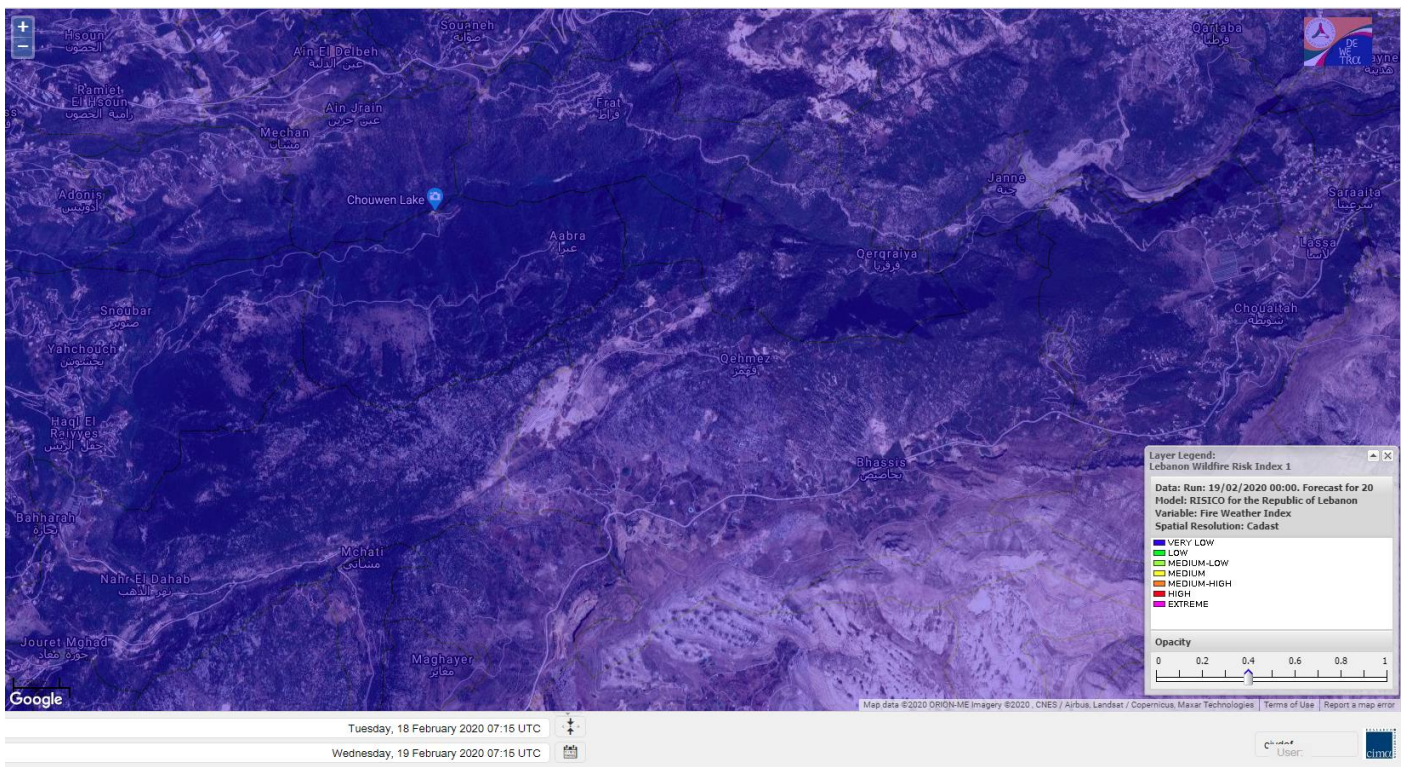
# Shouf Biosphere Reserve Forecast for 21 February 2020



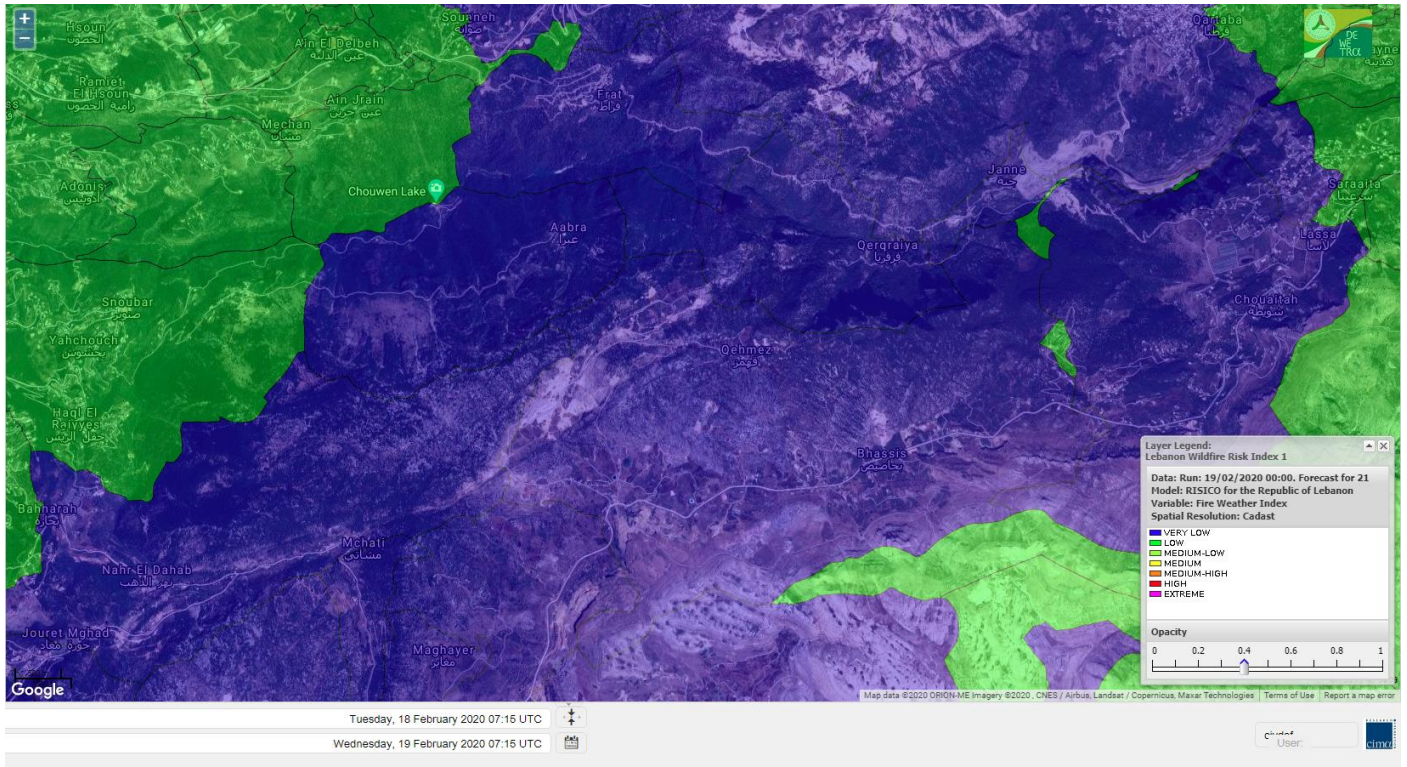
# Jabal Moussa Reserve Forecast for 19 February 2020



# Jabal Moussa Reserve Forecast for 20 February 2020



# Jabal Moussa Reserve Forecast for 21 February 2020

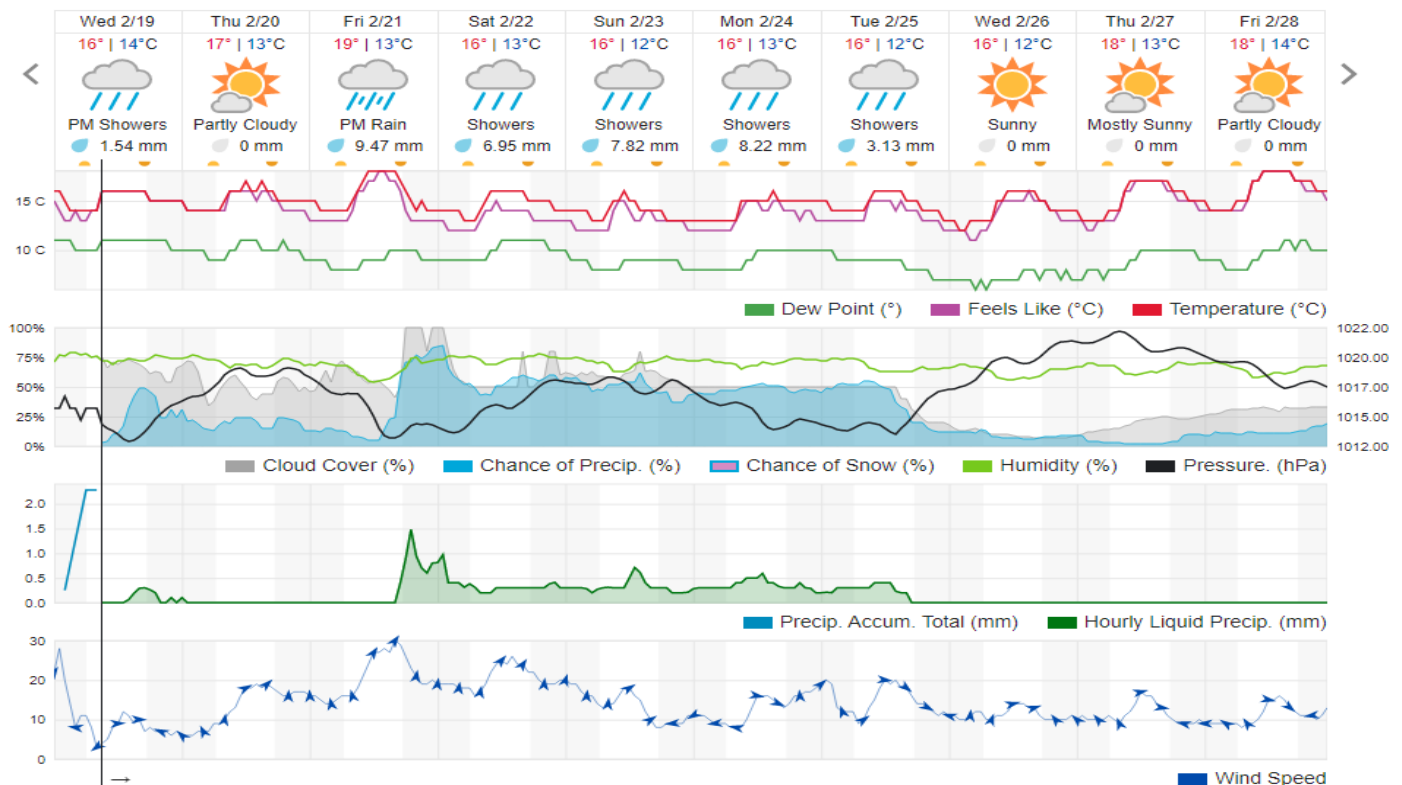


## Beirut, Beirut Governorate, Lebanon 10-Day Weather Forecast

15° ACHRAFIEH, RIZK STATION | CHANGE

TODAY HOURLY 10-DAY CALENDAR HISTORY WUNDERMAP

Customize



## Nord

### Koura

Municipality	19-Feb	20-Feb	21-Feb	Municipality	19-Feb	20-Feb	21-Feb	Municipality	19-Feb	20-Feb	21-Feb
Aaba	VL	M	M	Afsaddiq	VL	ML	M	Ain Ekriane	VL	ML	M
Amioun	VL	ML	M	Anfeh	L	M	M	Badbhoun	L	M	M
Barghoun	L	M	M	Barsa	VL	M	M	Batroumine	VL	M	M
Bdebba	VL	M	M	Bechmizine	VL	ML	M	Bednaye El-Koura	VL	M	M
Bhabbouch El-Koura	VL	ML	ML	Bkeftine	VL	M	M	Bnehran	VL	L	L
Bqaiia El-Koura	VL	M	M	Bsarma	VL	ML	M	Btaaboura	L	M	M
Bttram	VL	ML	M	Btouratij	VL	M	M	Bziza	VL	ML	M
Dar Beechtar	VL	ML	M	Dar Chmezzine	VL	ML	M	Deddeh	VL	M	M
Deir El-Balamand	VL	ML	M	Fih	VL	M	M	Hraiche	L	M	M
Ijdaabrine	L	ML	M	Kaftoun	L	ML	ML	Kefraya El-Koura	L	M	M
Kfarakka	VL	ML	M	Kfarhata	VL	ML	M	Kfarhazir	VL	M	M
Kfarkahel	VL	M	M	Kfarsaroun	VL	ML	M	Kosba	VL	ML	M
Mejdel el-Koura	VL	L	ML	Nakhle	VL	M	M	Qalhat	VL	ML	M
Ras Masqa	VL	M	M	Rechdibbine	VL	L	ML	Zakroun	L	M	M
Zgharta El-Mtaouile	VL	L	L								

### Bcharre

Municipality	19-Feb	20-Feb	21-Feb	Municipality	19-Feb	20-Feb	21-Feb	Municipality	19-Feb	20-Feb	21-Feb
Aabdine	VL	L	L	Bane	VL	VL	L	Barhelioun	VL	L	L
Bazooune	VL	VL	L	Becharre	VL	L	L	Beit Menzer	VL	VL	L
Billa	VL	L	L	Blaouza	VL	L	L	Bqaa Kafra	VL	VL	L
Bqerqacha	VL	VL	L	Breissat	VL	VL	L	Dimane	VL	VL	L
Hadath El Jobbeh	VL	VL	L	Hadchit	VL	VL	L	Hasroun	VL	VL	L
Mazraat Aassaf	VL	VL	VL	Mazraat Bani Saab	VL	VL	L	Mchaa El-Jobbeh	VL	VL	L
Metrit	VL	L	L	Moghr El-Ahoual	VL	L	L	Ouadi Qannoubine	VL	VL	VL
Qanat	VL	VL	L	Qnayer	VL	VL	L	Tourza	VL	L	L

### Batroun

Municipality	19-Feb	20-Feb	21-Feb	Municipality	19-Feb	20-Feb	21-Feb	Municipality	19-Feb	20-Feb	21-Feb
Aabrine	VL	ML	M	Aalali	VL	VL	L	Aartiz	VL	L	L
Abdelli	VL	L	L	Ajdabra	VL	L	ML	Assia	VL	VL	L
Basbina	VL	ML	ML	Batroun	L	M	M	Bcheleh	VL	VL	L
Bechtoudar	VL	VL	L	Beit Chlala	VL	VL	L	Beit Kassab	VL	L	L
Bijdarfil	VL	ML	M	Bqesmaya	VL	L	ML	Chatine	VL	VL	L
Chebtin	VL	L	L	Chekka	L	M	M	Daael	VL	VL	L
Dahr Abi Yaghi	VL	L	L	Daraya El-Batroun	VL	L	M	Deir Billa	VL	L	L
Deir Kfifane	VL	L	ML	Deir Mar Youhanna EL	VL	VL	L	Deir Mar Youssef Jra	VL	L	L
Douma	VL	VL	L	Douq	VL	L	L	Eddeh El-Batroun	VL	L	ML
Ftahat El-Batroun	VL	L	L	Ghouma	VL	L	ML	Hadtoun	VL	VL	L
Hamat	VL	ML	M	Harbouna	VL	L	L	Hardine	VL	VL	L
Helta	VL	VL	L	Hery	L	M	M	Jebbla	VL	L	L
Jrabta El-Batroun	VL	L	L	Jrane El-Batroun	VL	L	M	Kfar Aabida	L	ML	ML
Kfar Halda	VL	VL	L	Kfarb Shlaimane	VL	VL	L	Kfarhatna	VL	L	L



Kfarhay	L	M	M	Kfarhelos	VL	L	M	Kfifane	VL	L	M
Kfour El Arabi	VL	VL	L	Koubba	L	M	M	Kour	VL	L	ML
Mar Mama	VL	L	L	Masrah	VL	L	L	Mehmarch	VL	L	L
Mrah Chdid	VL	L	L	Mrah El Ziyat	VL	L	ML	Mrah El-Hajj	VL	VL	L
Nahle El-Batroun	VL	VL	L	Niha El-Batroun	VL	VL	L	Oujh El-Hajjar	VL	ML	M
Ouata Houb	VL	VL	L	Qatnaaoun	VL	ML	M	Racha	VL	VL	L
Rachana	VL	L	L	Rachkida	VL	ML	M	Ram El-Batroun	VL	VL	L
Ras Nahhach	VL	ML	M	Selaata	L	M	M	Sghar	VL	L	ML
Smar Jbayl	VL	L	ML	Sourat El-Batroun	VL	L	L	Tannourine El-Faouqa	VL	VL	L
Tannourine Et-Tahta	VL	VL	L	Thoum	L	ML	M	Toula El-Batroun	VL	L	L
Zan	VL	L	L								

## Zgharta

Municipality	19-Feb	20-Feb	21-Feb	Municipality	19-Feb	20-Feb	21-Feb	Municipality	19-Feb	20-Feb	21-Feb
Aachach	VL	M	ML	Aalma	VL	M	ML	Aarde	VL	ML	ML
Aintourine	VL	L	L	Arabet Qozhaya	VL	VL	L	Arde	VL	M	ML
Arjis	VL	L	L	Asnoun	VL	ML	ML	Ayto	VL	VL	L
Basloukit	VL	L	L	Bchannine	VL	ML	ML	Besebeel	VL	ML	ML
Bhairret Toula	VL	VL	L	Bnachee	VL	L	L	Boussit	VL	M	ML
Danha	VL	ML	ML	Daraiya Zgharta	VL	L	L	Deir Jdeide	VL	ML	ML
Ehden	VL	VL	L	Halan	VL	M	L	Hariq Zgharta	VL	ML	ML
Houakir	VL	L	L	Hraiqis	L	M	M	Iaal	VL	ML	ML
Ijbaa	VL	VL	L	Karm Saddeh	VL	L	L	Kfarchakhna	VL	ML	ML
Kfardlaqous	VL	ML	ML	Kfarfou	VL	L	L	Kfarhata Zgharta	VL	ML	ML
Kfarhoura	VL	ML	ML	Kfarsghab	VL	VL	L	Kfaryachit	VL	ML	ML
Kfarzaina	VL	ML	ML	Khaldiye	VL	ML	ML	Mazraat Ajbeaa	VL	ML	ML
Mazraat Et-Teffah	VL	VL	L	Mazraat Jneid	VL	ML	ML	Mejdlaya Zgharta	VL	M	ML
Merh Kfarsghab	VL	L	L	Miryata	VL	M	ML	Miziara	VL	L	L
Mzraat Kefraya	VL	M	ML	Qorah Bach	VL	ML	ML	Rachiine	VL	ML	ML
Ras Kifa	VL	L	L	Sakhra	VL	ML	ML	Sebhel Zgharta	VL	L	L
Serhel	VL	VL	VL	Tallet Zgharta	VL	ML	ML	Toula Zgharta	VL	VL	L
Zgharta	VL	ML	ML								

## Minieh-Denniye

Municipality	19-Feb	20-Feb	21-Feb	Municipality	19-Feb	20-Feb	21-Feb	Municipality	19-Feb	20-Feb	21-Feb
Aasaymout	VL	L	L	Aaymar	VL	L	L	Aazki	VL	L	L
Ain El-Tineh-Miniyeh	VL	VL	L	Assoun	VL	L	L	Bakhaaoun	VL	L	L
Bchennata	VL	L	L	Bechehhara	VL	L	L	Beddawi	L	M	M
Behouaita	VL	L	L	Beit El Foqss	VL	VL	L	Beit Haouik	VL	L	L
Beit Zoud	VL	L	L	Bekaasafrine	VL	L	L	Borj El Yahoudiyeh	L	M	M
Bqarsouna	VL	VL	L	Btermaz	VL	L	L	Debaael	VL	L	L
Deir Ammar	L	M	M	Deir Nbouh	VL	L	L	Haouaret-Miniyeh	VL	L	L
Haql el Azimeh	VL	VL	L	Harf El Siyad	VL	L	L	Hazmiye-Miniyeh	VL	VL	L
Izal	VL	L	L	Jarjour	VL	L	L	Jayroun	VL	L	L
Kahf El-Malloul	VL	L	L	Karm El-Moher	VL	L	L	Kfar Binine	VL	L	L
Kfarchalane	VL	L	L	Kfarhabou	VL	L	L	Kharroub-Miniyeh	VL	L	L
Mazraat El-Kreme	VL	L	L	Mazraat Ketrane	VL	L	L	Merkebta	L	M	M

Minyeh	L	M	M	Mrah El Sfirat	VL	VL	L	Mrah Sraj	VL	VL	L
Mrebbine	VL	L	ML	Nabi Youcheaa	L	M	M	Nemrine	VL	L	L
Qarhaiya	VL	L	L	Qarne	VL	L	L	Qarsita	VL	VL	L
Qattineh-Miniyeh	VL	VL	L	Qemmamine	VL	VL	L	Qraine	VL	VL	L
Raouda-Aadoua	VL	M	M	Rihaniyet-Miniyeh	VL	M	M	Sfireh	VL	VL	L
Sir Ed-Danniyeh	VL	VL	L	Tarane	VL	VL	L	Terbol-Miniyeh	L	M	M
Zaghartagrhrine	VL	L	L	Zouq Bhannine	L	M	M				

## Nabatiye

### Nabatiye

Municipality	19-Feb	20-Feb	21-Feb	Municipality	19-Feb	20-Feb	21-Feb	Municipality	19-Feb	20-Feb	21-Feb
Aabba	L	L	ML	Aazzi	VL	VL	ML	Adchit El-Chqif	L	L	ML
Ain Bou Swar	VL	VL	L	Ain Kana	VL	VL	L	Ali El-Taher	VL	VL	ML
Ansar	L	L	M	Arab Salim	VL	VL	ML	Arnoun	VL	L	ML
Bfaroue	VL	VL	ML	Breyqaah	L	ML	ML	Charqiyeh	L	VL	ML
Choukine	L	L	ML	Deir El Zahrani	VL	VL	ML	Doueir El-Nabatiyeh	L	VL	ML
Habbouch El-Nabatiye	VL	VL	ML	Hamra El-Nabatiyeh	VL	L	ML	Harouf El-Nabatiyeh	L	VL	ML
Hmaile	VL	VL	L	Houmin El Faouqa	VL	VL	ML	Houmin El Tahta	L	VL	ML
Jarjough	VL	VL	L	Jbaah El-Nabatiyeh	VL	VL	L	Jebchit	L	L	ML
Kfar Djal El-Nabatiy	VL	ML	ML	Kfar Remmane	VL	VL	ML	Kfar Sir	VL	ML	ML
Kfar Tebnit	VL	L	ML	Kfarfila	VL	VL	L	Kfour El-Nabatieh	L	VL	ML
Mayfadoun	VL	L	ML	Mazraat Bsaffour	VL	VL	ML	Mazraat Chalbaal	L	VL	ML
Mazraat Dmoul	L	L	M	Mazraat El Khreibeh	L	VL	ML	Mazraat El-Bayad El-	VL	VL	ML
Mazraat Kfarjaouz	VL	VL	ML	Mazraat Qalaat Meiss	L	L	ML	Nabatiyeh El-Fawka	VL	L	ML
Nabatiyeh Et-Tahta	VL	VL	ML	Namiriyeh	L	VL	ML	Qaaqaaiyet El Jisr	VL	ML	ML
Qossaibeh El-Nabatiy	VL	ML	ML	Roumine	VL	VL	ML	Sarba El-Nabatieh	VL	VL	L
Sir El-Gharbiyeh	VL	L	ML	Toul	L	VL	ML	Yehmor El-Nabatiyeh	VL	L	ML
Zaoutar El Charkiyeh	VL	L	ML	Zaoutar El-Gharbiyeh	VL	ML	ML	Zebdine El-Nabatiyeh	L	VL	ML
Zefta	VL	VL	ML								

### Hasbaiya

Municipality	19-Feb	20-Feb	21-Feb	Municipality	19-Feb	20-Feb	21-Feb	Municipality	19-Feb	20-Feb	21-Feb
Aain Jarfa	VL	VL	L	Abou Qamha	VL	VL	L	Ain Qania	VL	VL	L
Bourghos	VL	VL	L	Chebaa	VL	L	L	Chouaya Hasbaya	VL	VL	L
Dellafeh	VL	VL	L	Fardiss Hasbaiya	VL	VL	L	Hasbaya	VL	VL	L
Hbariyeh	VL	VL	L	Kaoukaba Hasbaiya	VL	VL	L	Kfar Chouba	VL	VL	L
Kfar Hamam	VL	VL	L	Kfeir El-Zait	VL	VL	L	Khalwat Hasbaya	VL	VL	L
Khreibet Hasbaiya	VL	VL	ML	Majidiyeh Hasbaiya	VL	VL	ML	Marj Ez-Zhour (Haouc	VL	VL	L
Meri	VL	VL	ML	Mimass	VL	VL	L	Rachaiya El-Fokhar	VL	VL	L
Salaiyeb	VL	VL	ML								

### Marjayoun

Municipality	19-Feb	20-Feb	21-Feb	Municipality	19-Feb	20-Feb	21-Feb	Municipality	19-Feb	20-Feb	21-Feb
Aalmane Marjaayoun	VL	L	L	Aamra	VL	VL	ML	Adayseh Marjaayoun	L	ML	ML
Adchit El-Koussair	VL	L	ML	Ain Aarab Marjaayoun	VL	VL	ML	Bani Haiyann	L	L	ML
Blatt Marjaayoun	VL	VL	L	Blida	L	L	ML	Borj El-Moulouk	VL	L	ML

Boueyda Marjaayoun	VL	VL	L	Deir Mimass	VL	L	ML	Deir Siriane	VL	L	ML
Dibbine	VL	VL	L	Ebel El Saqi	VL	VL	L	Houla	L	ML	ML
Houra	VL	L	ML	Kfar Kila	VL	L	ML	Khiam Marjaayoun	VL	VL	ML
Klayaa	VL	L	ML	Majdel Selem	VL	ML	ML	Marjaayoun	VL	VL	L
Markaba	L	ML	ML	Mays El-Jabal	L	ML	ML	Mazraat Doumiat	VL	L	ML
Mazraat Sarada	VL	VL	ML	Mhaibib	L	ML	ML	Qabrikha	VL	L	ML
Qantara	VL	L	ML	Rab El-Thalathine	L	L	ML	Saouaneh Marjayoun	VL	ML	ML
Talloussa	L	L	ML	Taybeh Matjaayoun	VL	L	ML	Touline	VL	L	ML

## Bent Jbail

Municipality	19-Feb	20-Feb	21-Feb	Municipality	19-Feb	20-Feb	21-Feb	Municipality	19-Feb	20-Feb	21-Feb
Ain-Ebel	VL	L	ML	Aitaroun	L	L	ML	Aynata Bint Jbeil	L	ML	ML
Ayta El-Chaeb	VL	L	L	Ayta El-Jabal	VL	ML	ML	Beit Lif	VL	L	L
Beit Yahoun	VL	L	ML	Bint Jbeil	VL	ML	ML	Borj Qalaway	VL	ML	M
Braachit	VL	ML	ML	Chakra	L	ML	ML	Debel	VL	L	L
Deir Antar	VL	L	ML	Froun	VL	ML	ML	Ghandouriyeh Bint Jb	VL	ML	ML
Hanine	VL	L	ML	Hariss	VL	L	ML	Hdatha	VL	ML	ML
Jmeyjmeh	VL	ML	ML	Kafra Bint Jbeil	VL	L	L	Kfar Dounine	VL	ML	ML
Khirbet Selm	VL	L	ML	Kounine	L	L	ML	Maroun El Ras	L	ML	ML
Qalaway	VL	ML	ML	Qaouzah	VL	L	L	Qatmoun	VL	L	ML
Ramya Bint Jbeil	VL	L	L	Rchaf	VL	L	L	Rmeich	VL	L	ML
Safad Al Battikh	VL	ML	ML	Salhaneh	VL	L	L	Serbine	VL	L	ML
Sultanieh Bint Jbeil	VL	ML	ML	Tibnine	VL	L	ML	Tiri	VL	L	ML
Yaroun	VL	ML	ML	Yater	VL	L	L				

## Mont Liban

### Jbail

Municipality	19-Feb	20-Feb	21-Feb	Municipality	19-Feb	20-Feb	21-Feb	Municipality	19-Feb	20-Feb	21-Feb
Aabeydat	VL	L	L	Aalita	VL	VL	L	Aamchit	L	M	M
Aarab El-Lahib	VL	VL	VL	Aarasta	VL	VL	L	Adonis Jbeil	VL	VL	L
Afqa Jbeil	VL	VL	L	Ain El Delbeh Jbeil	VL	VL	L	Ain El-Ghouyba	VL	VL	VL
Ain Jrain	VL	VL	L	Ain Kfah	VL	L	ML	Almat El Chemaliyat	VL	VL	VL
Almat El-Jenoubiya	VL	VL	VL	Aqoura	VL	L	L	Bayzoun	VL	VL	L
Bchille Jbeil	VL	VL	L	Bechtlida	VL	VL	L	Behdaydat	VL	L	L
Beit Habbaq	VL	L	ML	Bejjeh	VL	L	ML	Bekhaaz	L	ML	ML
Berbara Jbeil	L	M	M	Bintael	VL	L	L	Birket Hjoula	VL	L	L
Blatt Jbeil	VL	L	L	Boulhos	VL	VL	VL	Breyj Jbeil	VL	VL	L
Chamat	VL	L	ML	Chikhane	L	M	M	Chmout	VL	L	L
Eddeh Jbeil	VL	L	L	Ehmej	VL	VL	L	Fatre	VL	VL	L
Ferhet	VL	VL	L	Fghal	VL	L	ML	Frat	VL	VL	VL
Ghabat	VL	VL	L	Ghalboun	VL	L	ML	Gharzouz	VL	L	ML
Ghofrine	L	ML	ML	Habil	VL	L	L	Halate	VL	L	L
Haqel	VL	L	L	Hbaline	VL	L	ML	Hboub	VL	L	L
Hdeine	VL	VL	L	Hema Er-Rehban	VL	VL	L	Hema Mar Maroun Aann	VL	VL	VL
Hjoula	VL	VL	L	Hosrayel	L	M	M	Hsarat	VL	L	ML

Hsoun	VL	VL	L	Jaj	VL	VL	L	Janne	VL	VL	VL
Jbeil	VL	L	M	Jeddeyl Jbeil	L	M	M	Jlisse	VL	VL	L
Jouret El-Qattine	VL	VL	L	Kfar Baal Annaya	VL	VL	L	Kfar Kidde	L	M	M
Kfar Kouas	VL	VL	L	Kfar Mashoun	VL	L	ML	Kfoun	VL	L	L
Kharbe Jbeil	VL	L	ML	Laqlouq	VL	VL	L	Lassa	VL	VL	VL
Lehfed	VL	VL	L	Maad	VL	L	ML	Mar Sarkis	VL	VL	L
Mastita	VL	L	M	Mayfouq	VL	VL	L	Mazraat El Siyad	VL	VL	L
Mazraat El-Maaden	VL	VL	VL	Mechane	VL	VL	L	Mechmech Jbeil	VL	VL	L
Mehrin	VL	VL	L	Mejdel El-Akoura	VL	VL	L	Mghayreh Jbeil	VL	VL	L
Mounsef	L	M	M	Nahr Ibrahim	VL	L	M	Qahmez	VL	VL	VL
Qartaba	VL	VL	VL	Qartaboun	VL	L	M	Qattara Jbeil	VL	VL	L
Qorqraya	VL	VL	VL	Ramout	VL	L	ML	Ras Osta	VL	VL	L
Rihane Jbeil	L	M	M	Sakiet El-Khayt	VL	L	L	Saqi Richmaya	VL	VL	L
Sebrine	VL	VL	L	Seraita	VL	VL	L	Souane Jbeil	VL	VL	L
Tadmor	VL	VL	L	Tartej	VL	VL	L	Torzaiya	VL	VL	L
Yanouh Jbeil	VL	VL	L	Zibidine Jbeil	VL	VL	L				

## El Metn

Municipality	19-Feb	20-Feb	21-Feb	Municipality	19-Feb	20-Feb	21-Feb	Municipality	19-Feb	20-Feb	21-Feb
Aain El-Qabu	VL	VL	L	Aain El-Qach	VL	VL	L	Aain El-Teffaha	VL	VL	L
Aain el-Safssaf El-M	VL	VL	L	Abou Mizane	VL	VL	L	Ain Aar	VL	VL	ML
Ain Alaq	VL	VL	L	Ain El-Kharroube	VL	VL	L	Ain El-Sendianeh	VL	VL	L
Ain El-Zeitoune	VL	VL	L	Ain Saadeh	VL	VL	L	Aintoura El-Matn	VL	VL	L
Amaret Chalhoub	VL	VL	ML	Antelias	VL	VL	ML	Atchaneh	VL	VL	L
Ayroun	VL	VL	L	Baabdat	VL	VL	L	Baouchariyeh	L	ML	M
Baskinta	VL	VL	VL	Beit Chabab	VL	VL	L	Beit El-Chaar	VL	VL	ML
Beit El-Kekko	VL	VL	ML	Beit Mery	VL	VL	L	Bhersaf	VL	VL	L
Bikfaya	VL	VL	L	Biyakout	VL	VL	ML	Bnabil	VL	VL	L
Bourj Hammoud	L	M	M	Bqennaya	VL	VL	L	Broummana El-Matn	VL	VL	L
Bsalim	VL	VL	L	Bsifrine	VL	VL	VL	Bteghrine	VL	VL	L
Chaouiye	VL	VL	L	Chouaya El-Matn	VL	VL	L	Choueir	VL	VL	L
Chrine	VL	VL	L	Dahr El Sawan El-Mat	VL	VL	L	Daychouniyeh	VL	VL	L
Dbayeh	VL	VL	ML	Deir Chamra	VL	VL	VL	Deir Mar Abda el Mch	VL	VL	L
Deir Mar Roukouz	L	L	M	Deir Tamiche	VL	VL	L	Dik El-Mehdi	VL	VL	L
Dikwaneh	L	M	M	Douar El-Matn	VL	VL	L	Fanar	VL	VL	L
Fraike	VL	VL	L	Haret El-Ballaneh	VL	VL	ML	Hbous	VL	VL	ML
Himlaya	VL	VL	L	Jal El Did	VL	VL	ML	Jdeideh El-Metn	L	L	ML
Jouar El-Matn	VL	VL	L	Jouret El-Ballout	VL	VL	L	Kaaqour	VL	VL	L
Kfar Aaqab	VL	VL	L	Kfertay El-Matn	VL	VL	VL	Khenchara	VL	VL	L
Khillet El-Mtain	VL	VL	L	Konnabat Broummana	VL	VL	L	Konnabat Salima	VL	VL	VL
Machraah El-Matn	VL	VL	L	Majdel Tarchich	VL	VL	L	Majzoub	VL	VL	ML
Mansouriyeh El-Metn	L	L	ML	Mar Boutros Karm Et-	VL	VL	L	Mar Chaya et Mzekke	VL	VL	L
Mar Moussa Ed-Douar	VL	VL	L	Marjaba	VL	VL	L	Masqa	VL	VL	L
Mayasse	VL	VL	L	Mazraat Deir Aoukar	VL	VL	ML	Mazraat El-Hadirat	VL	VL	L
Mazraat Yachouh	VL	VL	ML	Mchikha	VL	VL	L	Menqlet Mezher	VL	VL	ML
Mhayseh Matn	VL	VL	L	Mkalles	L	ML	M	Mrouj	VL	VL	L

Mtain	VL	VL	L	Mtayleb	VL	VL	L	Nabay	VL	VL	L
Naccache	VL	VL	ML	Ouadi Chahine	VL	VL	L	Ouadi El-Karm El-Mat	VL	VL	VL
Ouata El-Mrouj	VL	VL	L	Ouyoun El-Matn	VL	VL	L	Qornet Chehwan	VL	VL	L
Qornet El-Hamra	VL	VL	L	Roumieh	VL	VL	L	Sfeilet Bikfaya	VL	VL	L
Sinn El-Fil	L	M	M	Zabbougha	VL	VL	VL	Zalqa	VL	VL	ML
Zarououn	VL	VL	L	Zekrite	VL	VL	L	Zighrine El-Matn	VL	VL	L
Zouk El-Khrab	VL	VL	ML								

## Chouf

Municipality	19-Feb	20-Feb	21-Feb	Municipality	19-Feb	20-Feb	21-Feb	Municipality	19-Feb	20-Feb	21-Feb
Aalmane El-Chouf	L	VL	M	Aammq El-Chouf	VL	VL	L	Ain Ouzein	VL	VL	L
Ain Qani	VL	VL	L	Ain Zhalta	VL	VL	L	Ainbal	VL	VL	L
Amatour	VL	VL	L	Anout	VL	VL	L	Atrine	VL	VL	L
Baadarane	VL	VL	L	Baaqline	VL	VL	L	Baasir	L	L	M
Barja	L	L	M	Barouk	VL	VL	L	Bater	VL	VL	L
Batloun	VL	VL	L	Bayqoun	VL	VL	L	Bchetfine	VL	VL	L
Beiteddine	VL	VL	L	Benouati Ech-Chouf	VL	VL	L	Berjein	VL	VL	L
Bireh et Mtalleh	VL	VL	L	Biret El-Chouf	VL	VL	L	Bkechtine Ouel Mchei	VL	VL	L
Bkifa El-Chouf	VL	VL	L	Botme	VL	VL	L	Bqaiaa Ech-Chouf	VL	VL	L
Bsaba El-Chouf	VL	VL	L	Chammis El-Chouf	L	VL	ML	Chehim	VL	VL	L
Chemaarine	VL	VL	L	Chourit	VL	VL	L	Daher El-Chouf	L	VL	L
Dalhoun	VL	VL	L	Damour	L	VL	ML	Daraya El-Chouf	VL	VL	L
Deir El-Moukhalles	VL	VL	L	Deir Baba	VL	VL	L	Deir Dourit	VL	VL	L
Deir El-Qamar	VL	VL	L	Deir Kouche	VL	VL	L	Dibbieh	VL	VL	L
Dmit	VL	VL	L	Fouara Jaafar	VL	VL	L	Fraidis El-Chouf	VL	L	L
Ghabet Jaafar	VL	VL	L	Gharife	VL	VL	L	Haret Jandal	VL	VL	L
Hasrout	VL	VL	L	Jadra	L	VL	M	Jahlieh	VL	VL	L
Jbeih El-Chouf	VL	VL	L	Jdeidet El-Chouf	VL	VL	L	Jiyeh	L	L	M
Jleiliyeh	VL	VL	L	Jmailiyeh	L	VL	ML	Joun	L	VL	ML
Kahlounie El-Chouf	VL	VL	L	Ketermaya	L	VL	M	Kfar Faqoud	VL	VL	L
Kfar Hamal	VL	VL	L	Kfar Him	VL	VL	L	Kfar Katra	VL	VL	L
Kfar Niss	VL	VL	L	Kfar hay	VL	VL	L	Kfarnabrakh	VL	VL	L
Khirbet Bisri	VL	VL	L	Knayse El-Chouf	VL	VL	VL	Maaniyeh	L	VL	ML
Maasser Beiteddine	VL	VL	L	Maasser El-Chouf	VL	VL	L	Majdalouna	L	VL	ML
Majdel El-Meouch	VL	VL	L	Mazboud	VL	VL	L	Mazmoura	VL	VL	L
Mazraat El Chouf	VL	VL	L	Mazraat El Daher	VL	VL	L	Mazraat El-Douair	VL	VL	L
Mechref	VL	VL	L	Mghairie	L	VL	ML	Mghayrie El-Chouf	VL	VL	L
Moukhtara	VL	VL	L	Mrusti	VL	VL	L	Mtolle	VL	VL	L
Naameh	L	L	ML	Niha El-Chouf	VL	VL	L	Ouadi Abou Youssef	VL	VL	VL
Ouadi Ed-Deir	VL	VL	L	Ouadi El-Sit	VL	VL	L	Ouadi bnehlay	VL	VL	L
Qraibeh	VL	VL	L	Qreiaa	VL	VL	L	Rmayle El-Chouf	L	VL	M
Semqaniyeh	VL	VL	L	Sibline	L	VL	M	Sirjbeil	VL	VL	L
Warhanieh	VL	L	L	Werdaniyeh	L	VL	M	Zaarourieh	VL	VL	L

## Baabda

Municipality	19-Feb	20-Feb	21-Feb	Municipality	19-Feb	20-Feb	21-Feb	Municipality	19-Feb	20-Feb	21-Feb
Abadiyeh	VL	VL	L	Ain Mouaffaq	VL	VL	L	Araiya	VL	VL	L

Arbaniyeh	VL	VL	VL	Arsoun	VL	VL	L	Baabda	L	L	ML
Baalchmey	VL	VL	ML	Bmaryam	VL	VL	L	Bourj El-Brajneh	L	L	ML
Boutchay	L	VL	L	Bsaba Baabda	L	VL	ML	Btekhney	VL	VL	L
Btibyat	VL	VL	L	Bzbedine	VL	VL	L	Chbeniyeh	VL	VL	L
Chiyah	L	ML	M	Chmeisset Baabda	VL	VL	L	Chouit	VL	VL	L
Deir El-harf	VL	VL	L	Deir Khouna	VL	VL	L	Dlaybeh	VL	VL	VL
Falougha	VL	L	L	Furn El-Chebbak	L	M	M	Hadath Beyrouth	L	L	M
Halaliyeh Baabda	VL	VL	L	Hammana	VL	VL	L	Haret El Sett	VL	VL	L
Haret Hamze	VL	VL	L	Haret Hreik	L	M	M	Hasbaiya El-Metn	VL	VL	VL
Jouar El-Hoz	VL	VL	L	Jouret Arsoun	VL	VL	L	Kfar Chima	L	VL	ML
Kfar Selouane	VL	VL	L	Khalouat Baabda	VL	VL	L	Kneisset Baabda	VL	VL	L
Laylakeh	L	VL	ML	Louayzeh Baabda	VL	VL	L	Merdache	L	VL	ML
Mzairaa Baabda	VL	VL	L	Ouadi Chahrour El Ol	VL	VL	L	Ouadi Chahrour El So	VL	VL	L
Qalaa Baabda	VL	VL	L	Qhraybe Baabda	VL	VL	L	Qobbayaa	VL	VL	L
Qornayel	VL	VL	L	Qortada	VL	VL	L	Qrayeh Baabda	VL	VL	L
Qsaibeh Baabda	VL	VL	L	Qtale Baabda	VL	VL	L	Ras El Metn	VL	VL	L
Ras El-Haref	VL	VL	L	Rouayset El-Ballout	VL	VL	L	Salima Baabda	VL	VL	L
Tahouitat El Ghadir	L	VL	ML	Tarchich	VL	VL	L	Zandouqa	VL	VL	L

## Aley

Municipality	19-Feb	20-Feb	21-Feb	Municipality	19-Feb	20-Feb	21-Feb	Municipality	19-Feb	20-Feb	21-Feb
Abey	VL	VL	L	Aghmid	VL	VL	L	Ain Dara	VL	L	L
Ain Drafil	VL	VL	L	Ain El Halazoun	VL	VL	L	Ain El-Rmmaneh	VL	VL	L
Ain Jedideh	VL	VL	ML	Ain Ksour	VL	VL	L	Ain Onoub	L	VL	L
Ain Traz	VL	VL	L	Ainab	L	VL	L	Aley	VL	VL	ML
Aramoun	L	VL	ML	Aytat	L	VL	ML	Azouniyeh	VL	VL	L
Baawerta	VL	VL	L	Badghan Oua Wadi Bad	VL	VL	L	Bassatine	L	VL	ML
Bayssour	VL	VL	L	Bchamoun	L	VL	L	Bdadoun	VL	VL	L
Behouara	VL	VL	L	Bennay	VL	VL	L	Bhamdoun El-Dayaa	VL	VL	ML
Bhamdoun El-Mhatta	VL	VL	ML	Bkhechthey	VL	VL	ML	Bleibel	L	VL	L
Bmaknine	VL	VL	ML	Bmehray	VL	L	L	Bouzrid	VL	VL	L
Bserrine	VL	VL	ML	Bsous	VL	VL	L	Btalloun	VL	VL	ML
Btater	VL	VL	ML	Chanay	VL	VL	ML	Charoun	VL	VL	L
Chartoun	VL	VL	L	Chemlane	L	VL	L	Choueifat El-Aamrous	L	VL	ML
Choueifat El-Oumara	L	VL	ML	Choueifat El-Quoubbe	L	L	ML	Dakkoun	VL	VL	L
Deir Qoubel	L	VL	L	Dfoun	L	VL	ML	Douair El Remmaneh	VL	VL	L
Ghaboun	VL	VL	L	Habramoun	VL	VL	L	Homs Oua Hama	VL	VL	L
Houmal	L	VL	L	Jisr El Qadi	VL	VL	L	Kehaleh	VL	VL	L
Keyfoun	L	VL	ML	Kfar Aamey	VL	VL	L	Kommatyeh	VL	VL	L
Maasrati	VL	VL	L	Majdel Baana	VL	VL	L	Mansourieh et Ain El	VL	VL	ML
Mazraat El-Nahr	VL	VL	L	Mchakhte	VL	VL	L	Mecherfeh	VL	VL	L
Mejdlaya	VL	VL	L	Mrayjat	VL	VL	L	Ramliyeh	VL	VL	L
Rechmaya	VL	VL	L	Rejmeh	VL	VL	L	Remhala	VL	VL	L
Rouayset El Neemane	VL	VL	L	Saoufar	VL	VL	L	Selfaya	VL	VL	L
Sirhmoul	L	VL	L	Souq El Ghareb	VL	VL	L	Taazanieh	VL	VL	ML

## Kesrouane

Municipality	19-Feb	20-Feb	21-Feb	Municipality	19-Feb	20-Feb	21-Feb	Municipality	19-Feb	20-Feb	21-Feb
Achkout	VL	VL	VL	Adma Oua Dafneh	VL	VL	ML	Ain Ed-Delbe Kesroua	VL	VL	VL
Ain El-Rihane	VL	VL	L	Aintoura Kesrouane	VL	VL	ML	Ajaltoun	VL	VL	VL
Akaybeh Kesrouane	VL	ML	M	Aramoun Kesrouane	VL	VL	VL	Azra ouel Ozor	VL	VL	L
Ballouneh	VL	VL	VL	Batha	VL	VL	L	Bekaatat Achkout	VL	VL	VL
Bekaatat Kanaan	VL	VL	VL	Bizhel	VL	VL	L	Bouar	VL	L	ML
Bqaatouta	VL	VL	VL	Bqaq Ed-Dine	VL	L	ML	Bzommar	VL	VL	VL
Chahatoul	VL	VL	VL	Chnaniir	VL	VL	L	Chouan	VL	VL	VL
Daraya Kesrouane	VL	VL	VL	Darououn	VL	VL	L	Deir Baqlouch	VL	VL	L
Diebta	VL	VL	VL	Eghbeh	VL	VL	VL	Faraya	VL	VL	VL
Fatka	VL	VL	L	Feytroun	VL	VL	VL	Ghazir	VL	VL	L
Ghbaleh Kesrouane	VL	VL	L	Ghedrass	VL	VL	L	Ghosta	VL	VL	VL
Ghyneh	VL	VL	L	Harharaya w Kattine	VL	VL	VL	Harissa Kesrouane	VL	VL	L
Hayata	VL	VL	VL	Hosein	VL	VL	VL	Hrajel	VL	VL	VL
Jdeideh Ghazir	VL	VL	VL	Jeita	VL	VL	L	Jounieh Ghadir	VL	VL	ML
Jounieh Haret Sakhr	VL	VL	M	Jounieh Salel Alma	VL	VL	ML	Jounieh Sarba	VL	VL	M
Jouret Bedrane	VL	VL	L	Jouret Mhad	VL	VL	VL	Jouret Termos	VL	VL	L
Kfar Debiane	VL	VL	VL	Kfar Tay Kesrouane	VL	VL	VL	Kfar Yassine	VL	VL	M
Kfour Kesrouane	VL	VL	VL	Kharayeb Nahr Ibrahi	VL	L	L	Klayaat Kesrouane	VL	VL	VL
Maarab	VL	VL	VL	Maaysra Kesrouane	VL	VL	L	Mayrouba	VL	VL	VL
Mazraat Er-Ras	VL	VL	ML	Mazraat Mrah El-Mir	VL	VL	VL	Mchaa El Ftouh	VL	VL	L
Mchaa Faraya	VL	VL	L	Mchaa Kfar Dibiane	VL	VL	L	Mghaer	VL	VL	VL
Mradiyah	VL	VL	L	Nahr Ed-Dahab	VL	VL	VL	Nammoura Kesrouane	VL	VL	L
Ouata El Jaouz	VL	VL	VL	Ouata Sillam	VL	VL	M	Raachine	VL	VL	VL
Rayfoun	VL	VL	VL	Safra Kesrouane	VL	L	M	Shayle Kesrouane	VL	VL	L
Tabarja	VL	VL	ML	Yahchouch	VL	VL	L	Zaaytreh	VL	VL	L
Zeytoun	VL	L	L	Zouk Mikael	VL	VL	M	Zouk Mosbeh	VL	VL	M

### Baalbek\_Hermel

#### Baalbek

Municipality	19-Feb	20-Feb	21-Feb	Municipality	19-Feb	20-Feb	21-Feb	Municipality	19-Feb	20-Feb	21-Feb
Aadous	VL	ML	M	Aamchki	VL	VL	L	Aarsal	VL	L	L
Ain Baalbek	VL	ML	M	Ain Bourday	VL	VL	ML	Ain El-Benye	VL	VL	L
Ain El-Jaouz Baalbek	VL	L	L	Ain El-Siya Chadoura	VL	L	L	Al Khodr Baalbek	VL	VL	ML
Al Nabi Chit	VL	VL	ML	Aynata Baalbek	VL	L	ML	Baalbek	VL	L	ML
Bachwat	VL	L	L	Barqa	VL	L	L	Bednayel Baalbak	VL	L	L
Beit Chama	VL	L	ML	Bijjaje	VL	M	M	Bouday	VL	L	ML
Brital	VL	L	L	Btadi	VL	L	M	Chaat	VL	M	M
Chaibe	VL	L	L	Chlifa	VL	ML	M	Chmestar	VL	L	ML
Dar El-Oussa	VL	L	L	Deir El-Ahmar	VL	L	ML	Deir Mar Maroun Baal	L	M	M
Douris	VL	L	ML	Fakiha	L	M	M	Hadath Baalbek	VL	L	ML
Ham	VL	VL	L	Haour Taala	VL	VL	L	Hizzine	VL	ML	M
Hlebta	L	L	M	Hosh Barada	VL	ML	M	Hosh El Dahab	VL	ML	M
Hosh El Snid	VL	L	ML	Hosh El-Nabi	VL	L	ML	Hosh El-Rafiq	VL	L	ML
Hosh Tal Safiya	VL	ML	M	Hrebta	VL	ML	M	laat	VL	ML	M

Jebaa	VL	L	ML	Jenta	VL	VL	ML	Kfar Dabach	VL	L	ML
Kfar Dane	VL	ML	M	Khraibeh El-Hermel	VL	L	M	Khreibet Baalbek	VL	VL	L
Kneisset Baalbek	VL	ML	M	Labueh	VL	M	M	Maarboun	VL	VL	L
Majdaloun	VL	ML	M	Maqneh	VL	ML	M	Mazraat Beit Mcheik	VL	L	M
Misraya	VL	L	ML	Moqraq	VL	M	M	Nabha El-Damdoum	VL	L	ML
Nabi Chbay	VL	VL	L	Nabi Osman	VL	M	M	Nahleh baalbek	VL	L	L
Ouadi El-Oss	VL	L	M	Qaa Baayoun	L	M	L	Qaa Jouar Maqiye	L	ML	ML
Qaa Ouadi El-Khanzir	L	M	M	Qah Baalbek	L	M	M	Qarha Baalbek	VL	ML	M
Qsarnaba	VL	L	ML	Ram Baalbek	VL	ML	M	Ras Baalbek El Sahl	L	M	M
Ras Baalbek El-Charq	L	M	L	Riha	VL	ML	M	Saaide	VL	ML	M
Sbouba	VL	M	M	Seriine El-Tahta	VL	L	ML	Slouqi	VL	L	L
Taiba Baalbek	VL	L	ML	Talia	VL	L	ML	Taraiya	VL	L	ML
Temnin El Fawqa	VL	L	ML	Temnin El-Tahta	VL	L	ML	Tfail	VL	ML	ML
Yahfoufa	VL	VL	ML	Yammouneh	VL	L	ML	Younine	VL	ML	M
Zboud	L	M	M								

## Hermel

Municipality	19-Feb	20-Feb	21-Feb	Municipality	19-Feb	20-Feb	21-Feb	Municipality	19-Feb	20-Feb	21-Feb
Charbine El-Hermel	L	ML	M	Hermel Jbab	VL	L	M	Hermel	L	M	M
Maaysra El-Hermel	L	ML	M	Michaa Mrajhine	VL	ML	ML	Ouadi Faara	L	L	M
Ras Baalbek - Ouadi	L	M	M	Ras Baalbek El Gharb	L	ML	M	Zighrine	L	ML	M

## Akkar

### Akkar

Municipality	19-Feb	20-Feb	21-Feb	Municipality	19-Feb	20-Feb	21-Feb	Municipality	19-Feb	20-Feb	21-Feb
Aain Tinta	L	M	M	Aaiyat	L	M	ML	Aakkar El-Aatiga	L	M	ML
Aamar Akkar	L	M	M	Aamar El Baykat	ML	M	M	Aamayer	L	M	M
Aamriyet Akkar	L	M	M	Aandqet	L	M	M	Aarmeh	ML	M	M
Aarqa	L	M	M	Aawaynat	L	M	M	Aayoun Akkar	L	M	ML
Abboudiye	M	M	M	Ain El-Zeit	L	M	M	Ain Yaaqoub	L	ML	M
Akroum	L	M	M	Aridet Cheikh Zennad	L	M	M	Baldehy w Mazraat Bal	M	M	M
Barcha	M	M	M	Bardeh	L	M	M	Bebnine	VL	M	M
Beino	L	M	M	Beit Ayoub	VL	M	ML	Beit El-Haouch	VL	M	M
Beit Mellat	L	M	ML	Beit Younes	VL	ML	L	Berbara Akkar	L	M	M
Berqayel	VL	M	M	Bezbina	VL	ML	L	Bireh Akkar	L	M	M
Borj	L	M	ML	Bqerezla	VL	M	ML	Bzal	VL	M	ML
Chane	VL	ML	L	Chaqdouf	L	M	ML	Charbila	M	M	M
Cheikh Mohammad	M	M	M	Cheikh Taba Es-Sahl	ML	M	M	Cheikh Taba	L	M	ML
Cheikh Zennad	L	M	M	Cheikhlar	L	M	M	Chir Hmairine	M	M	M
Daghle	L	M	M	Dahr Laissine	L	M	ML	Darine	M	M	M
Dawra	L	M	M	Dawsa w Baghdadi	L	M	M	Dayret Nahr El-Kabir	ML	M	M
Deir Dalloum	L	M	M	Deir Jennine	L	M	M	Denbou	VL	ML	L
Dibbabiyyeh	L	M	M	Douair Aadwiyeh	L	M	M	Fassikine	L	M	M
Fnaydek	VL	ML	L	Fraydes Akkar	L	M	M	Ghazayle	M	M	M
Habchit	VL	ML	L	Hakour	VL	M	M	Halba	M	M	M



Haouchab	M	M	M	Hayssat	L	M	M	Haytla	M	M	M
Hayzouq	M	M	M	Hedd	M	M	M	Hmaira Aakkar	VL	M	M
Hmaiss Aakkar	M	M	M	Hnaider	ML	M	ML	Hokr Ed-Dahri	L	M	M
Hokr Etti	M	M	M	Hokr Jouret Srar	M	M	M	Houaich	VL	ML	L
Hrar	VL	ML	L	Idbil	L	M	ML	Ilatt	L	M	ML
Janine	M	M	M	Jdeidet El-JoumeH	L	M	ML	Jdeidet El-Kaiteh	VL	M	M
Jebrayel	L	M	ML	Kafr	VL	L	ML	Kafr	L	M	M
Karm Asfour	L	M	M	Kfar Melki Aakkar	L	M	M	Kfar Noun	L	M	M
Kfarharra	M	M	M	Khalsa	L	M	M	Kharnoubet Aakkar	M	M	M
Khirbet Daoud Aakkar	L	M	M	Khirbet El Remmane	L	M	M	Khirbet Shar	L	M	M
Khoreybet El-Jindi	M	M	M	Khreibet Aakkar	VL	M	ML	Kneisset Aakkar	L	M	M
Kneisset Hnaider	ML	M	ML	Knisse	M	M	M	Kroum El-Aarab	M	M	M
Kwachra	L	M	M	Kweykhat	M	M	M	Machta Hammoud	L	M	M
Majdala	VL	M	M	Majdel Akkar	L	M	M	Mar Touma	VL	M	M
Marlaya Melhem	L	M	M	Mashha	ML	M	M	Massoudiye	L	M	M
Mazraat Beit Ghattas	VL	M	M	Mazraat En-Nahriye	L	M	M	Mechmech	VL	L	ML
Memneh	VL	L	L	Mhammara	VL	M	M	Mighraq Aakkar	L	M	M
Minyara	L	M	M	Moqayteh	L	M	M	Mounjez	L	M	M
Msalla	L	M	M	Mzeihmeh	M	M	M	Nfaisch	ML	M	M
Noura Et-Tahta	L	M	M	Ouadi El-Haour	M	M	M	Ouadi El-Jamous	VL	M	M
Ouyoun El-Ghizlane	VL	M	M	Qaabarine	L	M	M	Qabaait	VL	ML	L
Qachlaq	M	M	M	Qantara Aakkar	L	M	ML	Qarha Aakkar	ML	MH	ML
Qarqaf	VL	M	M	Qboula	L	M	ML	Qleiaat Aakkar	L	M	M
Qloud El-Baqie	VL	M	M	Qobaiyat Aakkar	L	M	M	Qobbat Chamrat	L	M	M
Qorayat	VL	ML	L	Qornet Aakkar	VL	M	ML	Qsair Aakkar	L	M	M
Rahbe	VL	M	ML	Rihaniyet Aakkar	M	M	M	Rmah	L	M	M
Rmoul	L	M	M	Saadine	M	M	M	Sadaqa	VL	M	ML
Saidnaya	M	M	M	Sammouniye	L	M	M	Sayssouq	VL	M	ML
Semmaqiye	L	M	M	Semmaqli	L	M	M	Sfinet El-Dreib	ML	M	M
Sfinet El-Qaitaa	VL	M	ML	Sindyanet Zeidane	L	M	M	Souaisset Aakkar	M	M	M
Srar	M	M	M	Tal Abbas El Gharby	M	M	M	Tal Abbas El-Charqy	M	M	M
Tal Biret	ML	M	M	Tal Hmayra	M	M	M	Tal Maayan Tal Kiri	L	M	M
Tal Sibel	L	M	M	Tallet Chattaha	L	M	ML	Tikrit	L	M	ML
Tleil	M	M	M	Tshea	VL	L	L	Zawarib	L	M	ML
Zouq El Hosniyeh	VL	M	M	Zouq El-Haddara	VL	M	M	Zouq El-Hbalsa	VL	M	M
Zouq El-Moqachrine	VL	M	M								

## Sud

### Sour

Municipality	19-Feb	20-Feb	21-Feb	Municipality	19-Feb	20-Feb	21-Feb	Municipality	19-Feb	20-Feb	21-Feb
Aaiyeh	VL	L	ML	Aalma El-Chaab	VL	L	L	Aaytit	VL	L	ML
Abbassiyeh Sour	L	L	M	Abou Chech	VL	L	L	Ain Abou Abdallah	L	L	M
Ain Baal	VL	L	M	Arzoun	VL	ML	ML	Aziyeh	VL	L	L
Baflaya	VL	ML	ML	Barich	VL	L	ML	Batouliyeh	VL	L	M
Bayad	VL	L	ML	Bazouriyeh	L	L	M	Bediass	VL	L	ML

Bestiyat	VL	L	ML	Borj El Chemali	L	L	M	Borj En-Naqoura	L	L	M
Borj Rahhal	VL	L	ML	Boustane	VL	L	ML	Btaychiyeh	VL	L	L
Chaaitiye	VL	L	ML	Chameh	VL	VL	L	Chehabiye	VL	ML	ML
Chehour	VL	L	L	Chihine	VL	L	L	Debaal Sour	VL	L	ML
Deir Amess	VL	L	L	Deir Kifa	VL	ML	ML	Deir Qanoun El-Ain	VL	L	M
Deir Qanoun El-Naher	VL	L	ML	Derdghaiya	VL	ML	ML	Dhayra	VL	L	L
Halloussiyeh	VL	L	ML	Hamoul	VL	L	L	Hanaouey	VL	L	ML
Henniye	VL	L	M	Hmairi Sour	VL	L	ML	Iskandarouna Sour	VL	L	L
Jbal El Botom	VL	L	L	Jebbin	VL	L	ML	Jennata	VL	L	ML
Jijim	VL	VL	L	Jouaiya	VL	L	ML	Kneisset Sour	VL	L	M
Maarake	VL	L	ML	Maaroub	VL	L	ML	Majadel	VL	L	ML
Majdalzoun	VL	L	ML	Mansouri Sour	VL	L	ML	Marnba	VL	L	L
Marouahine	VL	L	L	Mazraat El-Zalloutiy	VL	L	ML	Mazraat Mechref	VL	L	ML
Mazraat Tayr Semhat	VL	L	L	Mheilib	L	L	M	Neffakhiyeh	VL	ML	ML
Niha Sour	VL	ML	ML	Ouadi Jilo	VL	L	ML	Qana	VL	L	ML
Qolaileh Sour	VL	L	M	Rechknany	VL	L	ML	Rmadiyah	VL	L	ML
Selha Sour	VL	ML	ML	Siddiqine	VL	L	ML	Sour	L	L	M
Srifa	VL	ML	ML	Tayr Debbe	L	L	M	Tayr Felsay	VL	L	ML
Tayr Harfa	VL	L	ML	Touayri	VL	L	L	Toura	VL	L	ML
Yanouh Sour	VL	L	ML	Yarine	VL	L	ML	Zebqine	VL	L	L

## Saida

Municipality	19-Feb	20-Feb	21-Feb	Municipality	19-Feb	20-Feb	21-Feb	Municipality	19-Feb	20-Feb	21-Feb
Aanqoun	L	VL	ML	Aaqtanit	L	L	ML	Aarab Ej-Jall	VL	VL	ML
Aarab Tabbaya	VL	VL	ML	Abra Saida	L	VL	M	Adloun	L	L	M
Adousiyeh	L	ML	M	Ain-El-Deleb	L	VL	ML	Arzai	VL	L	M
Babliyah	L	L	M	Barty	VL	VL	L	Bissariyeh	L	L	M
Bnaafoul	L	VL	ML	Bqosta	L	VL	M	Bramiy	L	VL	M
Daoudiyeh	L	L	M	Dareb El-Sim	L	VL	ML	Erkay	L	VL	ML
Ghassanieh	L	L	M	Ghazieh	L	L	M	Hajjeh	L	VL	ML
Haret Saida	L	VL	M	Hartiyeh	L	L	M	Hlaliye Saida	L	VL	M
Insariyat	L	L	M	Jazira Saida	L	L	M	Kafar Bit	L	VL	ML
Kaoutariyet El-Siyad	L	VL	ML	Kfar Chellal	VL	VL	L	Kfar Hatta Saida	L	VL	ML
Kfar Milke Saida	VL	VL	L	Khartoum	L	L	M	Khaziz	VL	VL	ML
Khirbet Ed-Douair Sa	L	L	M	Khirbet El-Bassal	L	L	ML	Khrayeb Saida	L	L	M
Loubieh	L	L	M	Maghdouche	L	VL	ML	Majdelyoun	L	VL	M
Matariyet El-Choumar	L	L	M	Matayriyeh	L	VL	ML	Mazraat 'Mseileh	L	ML	M
Mazraat 'Snaiber	L	ML	M	Mazraat Aarab Soukka	VL	VL	ML	Mazraat Deir Taqla	VL	VL	M
Mazraat El Yahoudiye	L	ML	M	Mazraat El-Housseini	L	ML	M	Mazraat El-Mhaydaleh	L	L	M
Mazraat El-Ouasta	L	L	M	Mazraat Jamjim	L	L	M	Mazraat Kaoutariyet	L	L	M
Mazraat Kfar Badda	L	L	M	Mazraat Oussamiyat	L	L	M	Mazraat Sari	L	L	M
Mazraat Sinai	L	L	M	Meemariyeh	L	L	ML	Merouaniyeh	L	L	ML
Miyeh ou Miyeh	L	VL	ML	Najjariyeh	L	ML	M	Qaaqiyat El-Snaouba	L	L	M
Qnarit	L	L	ML	Qraiye Saida	L	VL	ML	Saida Ed-Dekermane	L	L	ML
Saida El-Oustani	L	VL	M	Saida El-Qadimeh	L	VL	M	Saida Kefraya	L	VL	ML
Saksakiyeh	L	L	M	Salhieh Saida	L	VL	M	Sarafand	L	L	M

Sfenta	VL	VL	L	Tafahta	L	L	M	Tanbourit	L	VL	ML
Tebna	L	L	M	Zaghdraiya	VL	VL	ML	Zeita	VL	VL	ML
Zrariyeh	L	L	M								

## Jezzine

Municipality	19-Feb	20-Feb	21-Feb	Municipality	19-Feb	20-Feb	21-Feb	Municipality	19-Feb	20-Feb	21-Feb
Ain El-Mir (El Estab)	VL	VL	ML	Anane	VL	VL	L	Aramta	VL	VL	L
Ariya	VL	VL	L	Aychiyeh	VL	VL	L	Azour	VL	VL	L
Baba	VL	VL	L	Bayssour Jezzine	L	VL	ML	Benoueteh Jezzine	VL	VL	L
Bhannine	VL	VL	L	Bisri	VL	VL	L	Bkassine	VL	VL	L
Bouslaya	VL	VL	L	Btedine El-Leqech	VL	VL	L	Chbail	VL	VL	VL
Choualiq Jezzine	L	VL	M	Dahr Ed-Deir	VL	VL	L	Deir El Qattine	VL	VL	L
Demachqiyeh	VL	VL	ML	Ghabbatiyeh	VL	VL	L	Harf Jezzine	VL	VL	L
Hassaniyeh	L	VL	ML	Haytouleh	VL	VL	L	Haytura	VL	VL	L
Hidab	VL	VL	L	Homsiyeh	VL	VL	L	Jabal Toura	VL	VL	L
Jarmaq	VL	VL	ML	Jensnaya	L	VL	ML	Jernaya	VL	VL	L
Jezzine	VL	VL	L	Karkha	L	VL	ML	Kfar Falous	VL	VL	L
Kfar Houna	VL	VL	L	Kfar Jarrah	L	VL	ML	Lebaa	L	VL	ML
Louayzet Jezzine	VL	VL	L	Machmouche	VL	VL	L	Mahmoudiyeh Jezzine	VL	VL	ML
Maknounye Jezzine	VL	VL	L	Maraat Ouazaiyeh	VL	VL	L	Mazraat Daraya	VL	VL	L
Mazraat El-Aarqoub	VL	VL	L	Mazraat El-Mathane	VL	VL	L	Mazraat El-Rahbane	VL	VL	L
Mazraat Khallet Khaz	VL	VL	L	Mazraat Louzid (Loua	VL	VL	L	Mazraat Qrouh	VL	VL	L
Mazraat Tamra	VL	VL	ML	Mazraat Zighrine Jez	VL	VL	L	Mazraat	VL	VL	L
Mharbiyeh	VL	VL	ML	Midane Jezzine	VL	VL	L	Mjeydel Jezzine	VL	VL	ML
Mlikh	VL	VL	L	Mrah El-Hbasse	L	VL	ML	Ouadi Baanqoudaine	L	VL	ML
Ouadi El-Laymoun	VL	VL	ML	Ouardiyeh	VL	VL	VL	Qabaa Jezzine	VL	VL	L
Qatrani	VL	VL	L	Qaytouleh	VL	VL	L	Qtaleh Jezzine	VL	VL	L
Rihane Jezzine	VL	VL	L	Rimat	VL	VL	L	Roum	VL	VL	L
Roummanet	VL	VL	L	Sabbah	VL	VL	L	Saydoun	VL	VL	L
Sfaray	VL	VL	L	Snaya	VL	VL	L	Sojoud	VL	VL	L
Srayri	VL	VL	L	Taaid	VL	VL	L	Wadi Jezzine	VL	VL	L
Zhalta	VL	VL	L								

## Bekaa

### West Bekaa

Municipality	19-Feb	20-Feb	21-Feb	Municipality	19-Feb	20-Feb	21-Feb	Municipality	19-Feb	20-Feb	21-Feb
Aammiq BG	VL	L	ML	Ain El Tineh BG	VL	VL	L	Ain Zebdeh	VL	VL	L
Ana	VL	L	L	Aytanit	VL	VL	L	Baaloul BG	VL	L	L
Bab Mareh	VL	VL	L	Chouberqiye Aammiq	VL	L	ML	Dakoue	VL	L	ML
Deir Ain El-Jaouze	VL	VL	L	Deir Tahniche	VL	L	L	Ghaza	VL	L	ML
Harime El-Soughra	VL	L	ML	Hoch Harimeh	VL	L	ML	Jazira BG	VL	L	ML
Jib Jennine	VL	L	ML	Kamed-El-Laouz	VL	L	ML	Kefraya BG	VL	VL	L
Khiara El Atika	VL	L	ML	Khiara	VL	L	ML	Khirbet Qanafar	VL	VL	L
Lala	VL	L	L	Lebbaya BG	VL	VL	L	Loussa	VL	VL	L
Machghara	VL	VL	L	Manara (Hammara) BG	VL	L	L	Mansoura BG	VL	L	ML

Marej BG	VL	L	ML	Maydoun	VL	VL	L	Ouaqf BG	VL	L	ML
Qaraaoun	VL	L	L	Qelya	VL	VL	L	Raouda (Istabel)	VL	L	ML
Saghbine	VL	VL	L	Sohmor	VL	VL	L	Soltan Yacoub el Ara	VL	L	ML
Souairy	VL	L	ML	Sultan Yaacoub	VL	L	ML	Tal Znoub	VL	L	ML
Yehmor BG	VL	VL	L	Zilaya	VL	VL	L				

## Zahle

Municipality	19-Feb	20-Feb	21-Feb	Municipality	19-Feb	20-Feb	21-Feb	Municipality	19-Feb	20-Feb	21-Feb
Aanjar (Haouch Mouss)	VL	L	ML	Ablah	VL	L	ML	Ain Kfarzabad	VL	VL	ML
Ali-El-Nahri	VL	L	ML	Bar Elias	VL	L	ML	Bouarej	VL	L	ML
Cheberqiyet Tabet	VL	L	ML	Chtaura	VL	VL	ML	Deir El Ghazal	VL	VL	ML
Delhamiyet Zahle	VL	L	ML	Ferzol	VL	L	L	Haouch El-Ghanam	VL	L	ML
Haouch Es-Siyadeh	VL	VL	ML	Haouch Hala	VL	L	ML	Haouch Mandara	VL	L	ML
Haouch Qayssar	VL	L	ML	Hezerta	VL	L	L	Hosh Moussa	VL	VL	ML
Jdita	VL	L	ML	Kfarzabad	VL	L	ML	Ksara	VL	L	ML
Majdel Aanjar	VL	L	L	Makssi	VL	L	ML	Massa	VL	L	ML
Mazraat Er-Remtaniye	VL	L	ML	Mrayjat Zahle	VL	L	ML	Mzaraa Zahle	VL	L	ML
Nabi Ayla	VL	L	ML	Nasriyet Rizk	VL	L	ML	Nasriyet Zahle	VL	L	ML
Niha Zahle	VL	L	ML	Ouadi Ed-Deloum	VL	L	ML	Ouadi El-Arayech	VL	L	L
Qaa El Rim	VL	L	L	Qab Elias	VL	VL	ML	Qousaya	VL	VL	ML
Rhit	VL	L	ML	Riyak	VL	L	ML	Saadnayel	VL	L	ML
Taal El-Akhdar	VL	L	ML	Taalbeya	VL	L	ML	Taanayel	VL	L	ML
Talamara	VL	L	ML	Tcheflik Edde Haouch	VL	L	ML	Tcheflik Qiqano	VL	L	ML
Terbol Zahle	VL	VL	ML	Touaite Zahle	VL	VL	L	Zahle Aradi	VL	L	L
Zahle El-Berbara	VL	L	L	Zahle El-Maallaqa	VL	L	ML	Zahle El-Midane	VL	L	L
Zahle Er-Rassiyeh	VL	L	L	Zahle Haouch El-Ouma	VL	L	ML	Zahle Haouch El-Ouma	VL	L	ML
Zahle Haouch Ez-Zara	VL	L	ML	Zahle Maallaqa Aradi	VL	L	ML	Zahle Mar Antonios	VL	L	L
Zahle Mar Elias	VL	L	ML	Zahle Mar Gerios	VL	L	ML	Zahle Saydet En-Naja	VL	L	ML
Zebdoul	VL	VL	L								

## Rachaiya

Municipality	19-Feb	20-Feb	21-Feb	Municipality	19-Feb	20-Feb	21-Feb	Municipality	19-Feb	20-Feb	21-Feb
Ain Arab Rachaiya	VL	ML	L	Ain Ata	VL	L	L	Ain Harche	VL	L	L
Aqabe Rachaya	VL	L	L	Ayha	L	M	ML	Ayta El Fokhar	VL	L	ML
Bakifa Rachaya	VL	L	L	Bakka	VL	ML	ML	Beit Lahya	VL	L	L
Bireh Rachaiya	VL	L	L	Daher El Ahmar	VL	L	L	Deir El-Achayer	L	M	L
Heloua Rachaiya	L	M	L	Hoch El Qannabeh Rac	VL	L	L	Kaoukaba Bou Arab	VL	L	L
Kfar Danis	VL	L	L	Kfar Mechki	VL	L	L	Kfar Qouq	VL	M	L
Kherbet Rouha	VL	L	L	Majdel Balhiss	VL	L	L	Mdoukha	VL	ML	ML
Mhaydseh Rachaiya	VL	L	L	Nabi Safa	VL	VL	L	Rachaiya	VL	L	L
Rafid Rachaiya	VL	L	L	Selsata (Mazraat Dei	VL	M	L	Tannoura	VL	L	L
Yanta	L	M	L								

## Beyrouth

### Beyrouth

Municipality	19-Feb	20-Feb	21-Feb	Municipality	19-Feb	20-Feb	21-Feb	Municipality	19-Feb	20-Feb	21-Feb
--------------	--------	--------	--------	--------------	--------	--------	--------	--------------	--------	--------	--------

Achrafieh	L	M	M	Ain el-Mreisse	L	M	M	Bachoura	L	M	M
Beirut Central Distr	L	M	M	Marfai	L	M	M	Mazraa	L	M	M
Medaouar	L	M	M	Minet el-Hosn	L	M	M	Mwssaitbeh	L	M	M
Ras Beirut	L	M	M	Rmeil	L	M	M	Saifi	L	M	M
Zqaq el-Blat	L	M	M								