

Lebanon Fire Risk Bulletin



CIVIL DEDEFENCE

Refer to cadast table condition.

Please note that the indicated temperature is at 2 meters height from the ground.

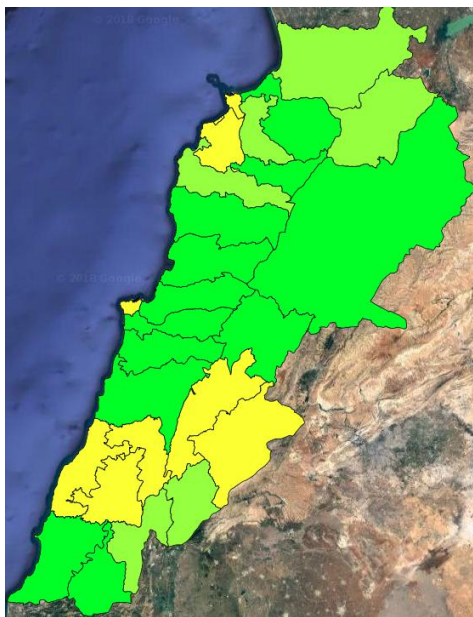
General description of potential fire risk situation

Symbol	Level of risk	Meaning and actions
VL	Very low	Very low fire risk. Controlled burning operations can be hardly executed due to high fuel moisture content. Normally wildfires self-extinguish.
L	Low	Low fire risk. Controlled burning operations can be executed with a reasonable degree of safety.
ML	Medium low	Medium-low fire risk. Controlled burning operations can be executed in safety conditions. All the fires need to be extinguished.
M	Medium	Medium fire risk. Controlled burning operations would be avoided. All the fires need to be very well extinguished.
M	Medium high	Controlled burning is not recommended. Open flame will start fires. Cured grasslands and forest litter will burn readily. Spread is moderate in forests and fast in exposed areas. Patrolling and monitoring is suggested. Fight fires with direct attack and all available resources.
H	High	Ignition can occur easily with fast spread in grass, shrubs and forests. Fires will be very hot with crowning and short to medium spotting. Direct attack on the head may not be possible requiring indirect methods on flanks. Patrolling and monitoring the territory is highly suggested.
E	Extreme	Ignition can occur also from sparks. Fires will be extremely hot with fast rate of spread. Control may not be possible during day due to long range spotting and crowning. Suppression forces should limit efforts to limiting lateral spread. Damage potential total. Patrolling and monitoring the territory is highly suggested.

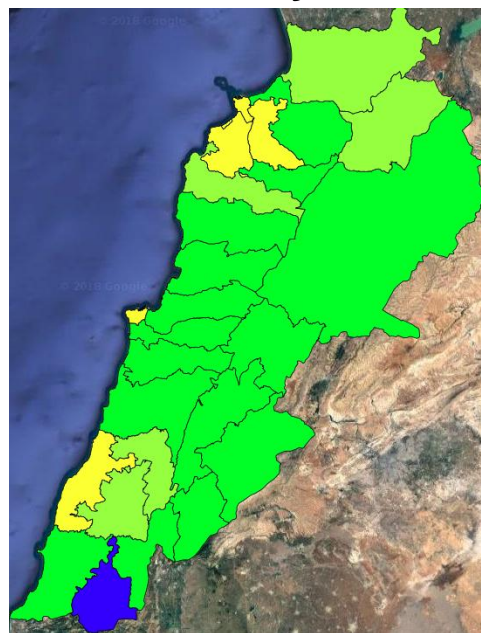
Beirut, 20 February 2019

FIRE RISK INDEX

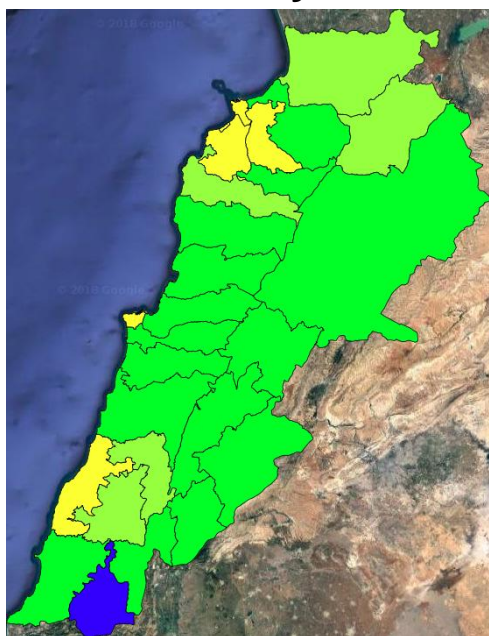
19 February 2019



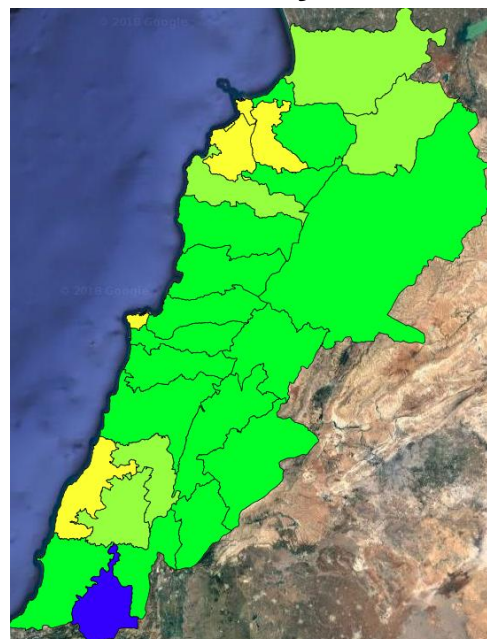
20 February 2019



21 February 2019



22 February 2019

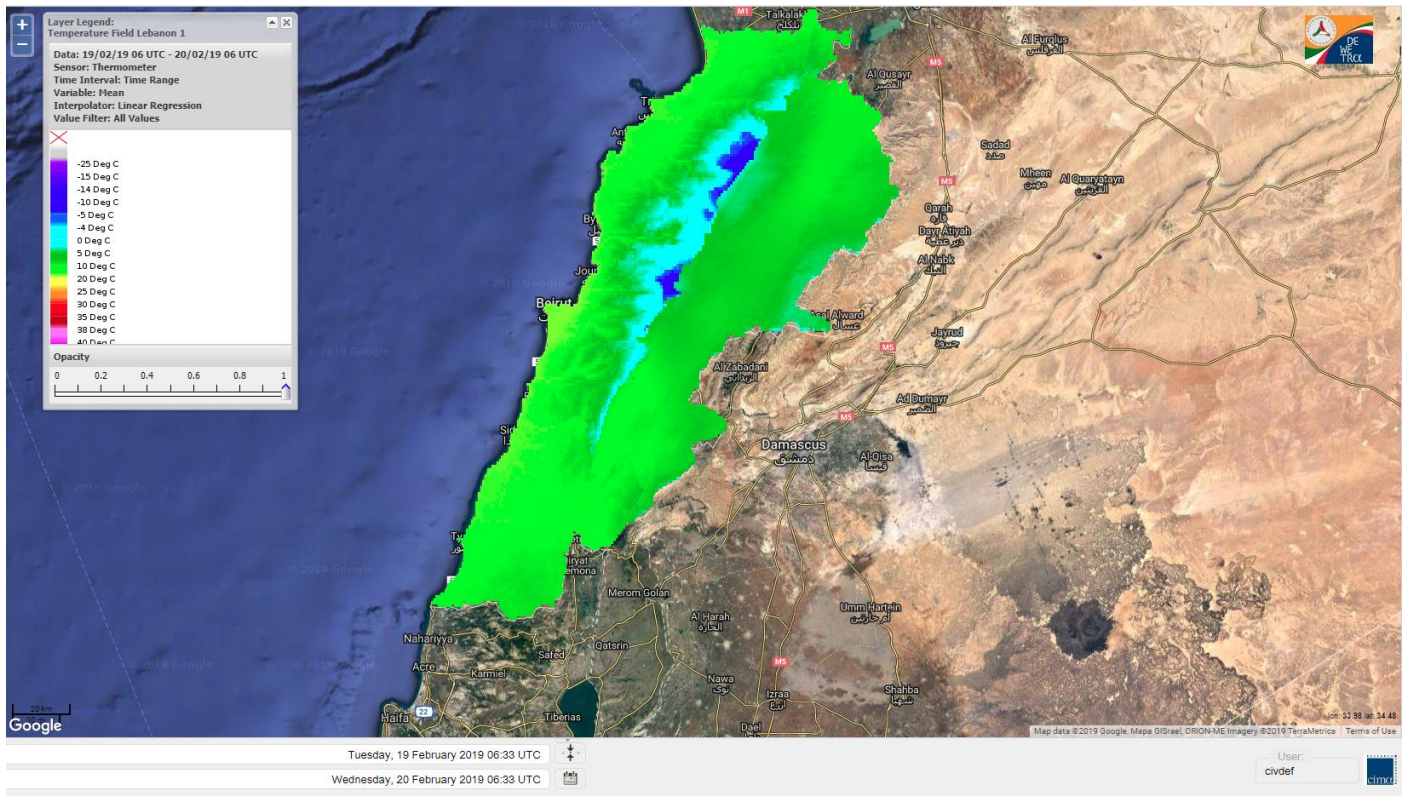


Layer Legend:
Lebanon Wildfire Risk Index 1

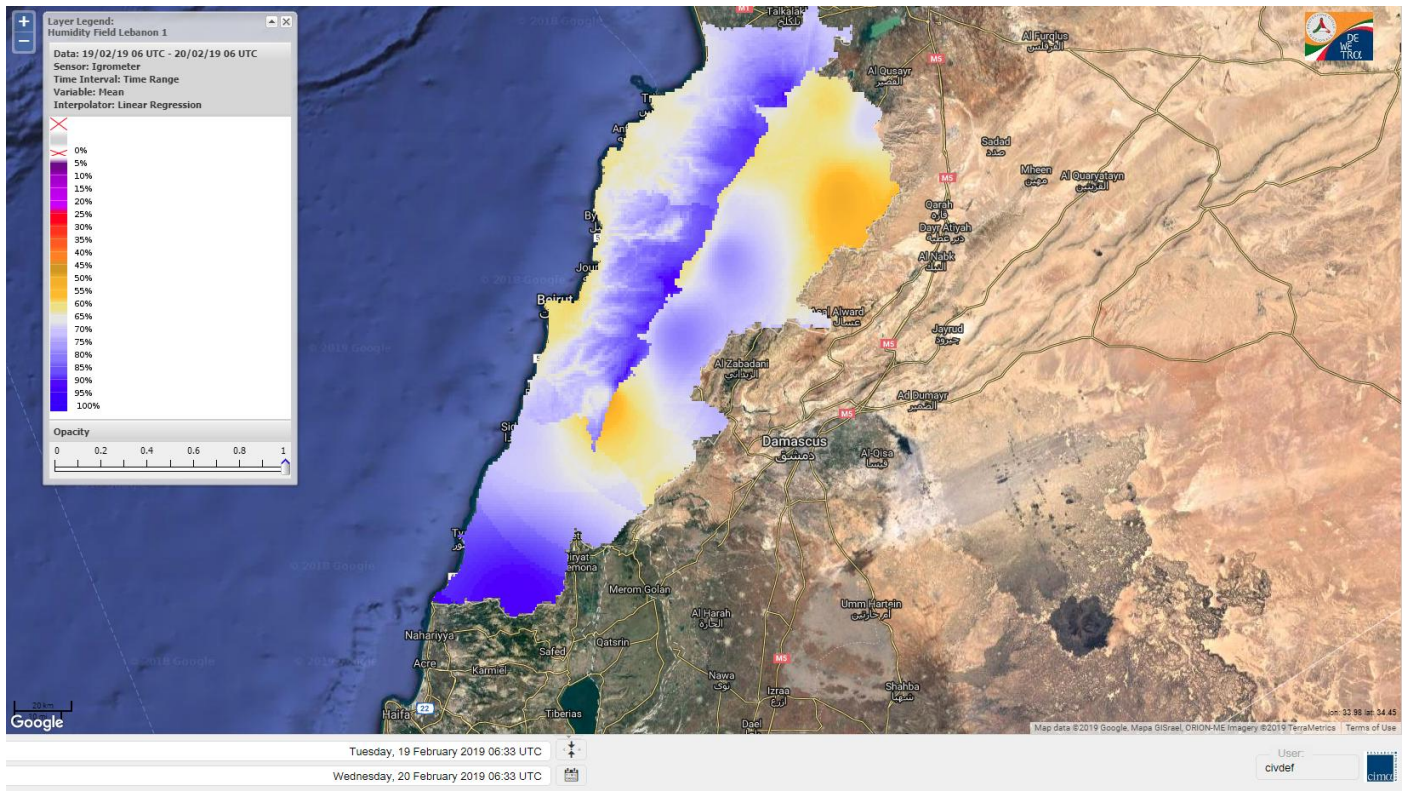
Data: Run: 20/02/2019 00:00. Forecast for 20
Model: RISICO for the Republic of Lebanon
Variable: Fire Weather Index
Spatial Resolution: Caza

- VERY LOW
- LOW
- MEDIUM-LOW
- MEDIUM
- MEDIUM-HIGH
- HIGH
- EXTREME

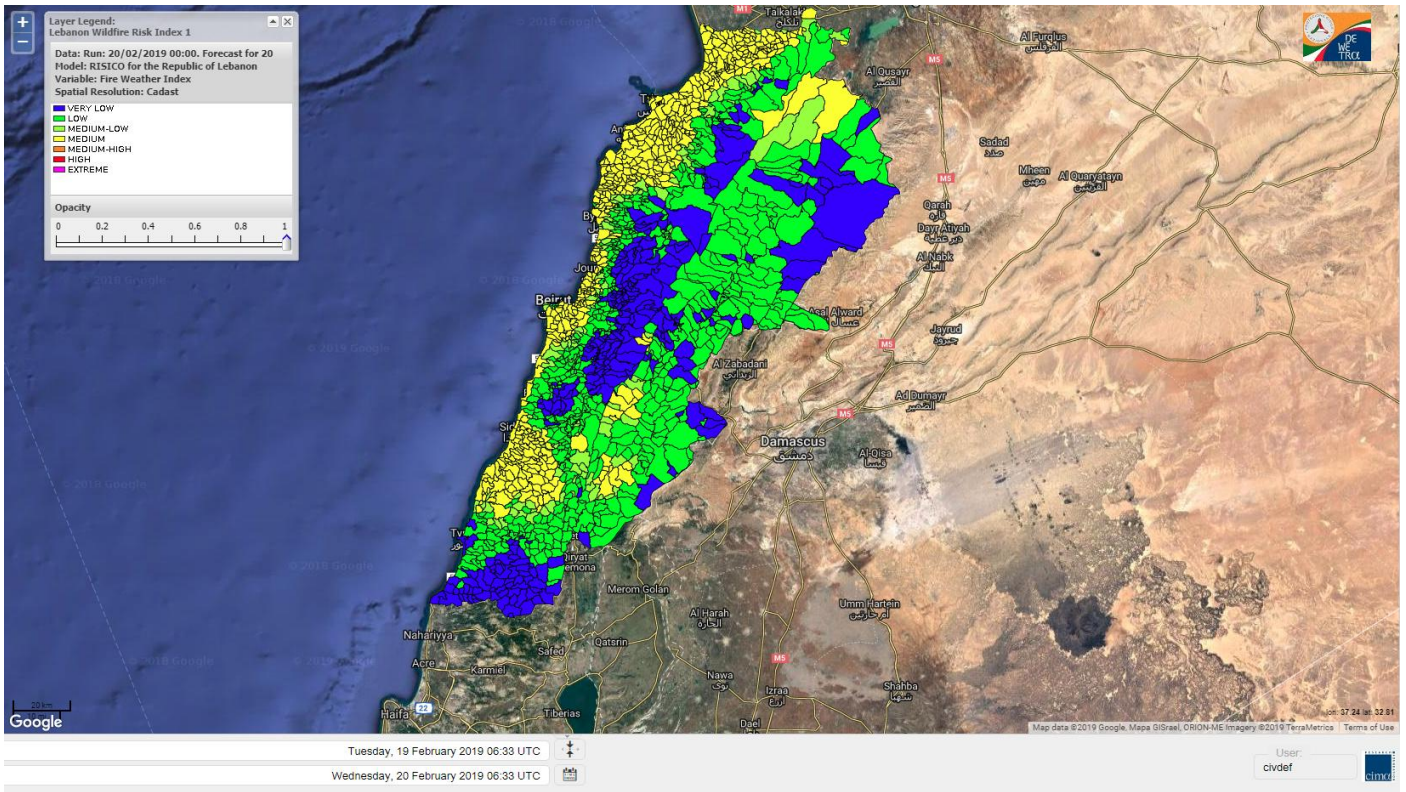
Lebanon temperature for Lebanon 20 February 2019



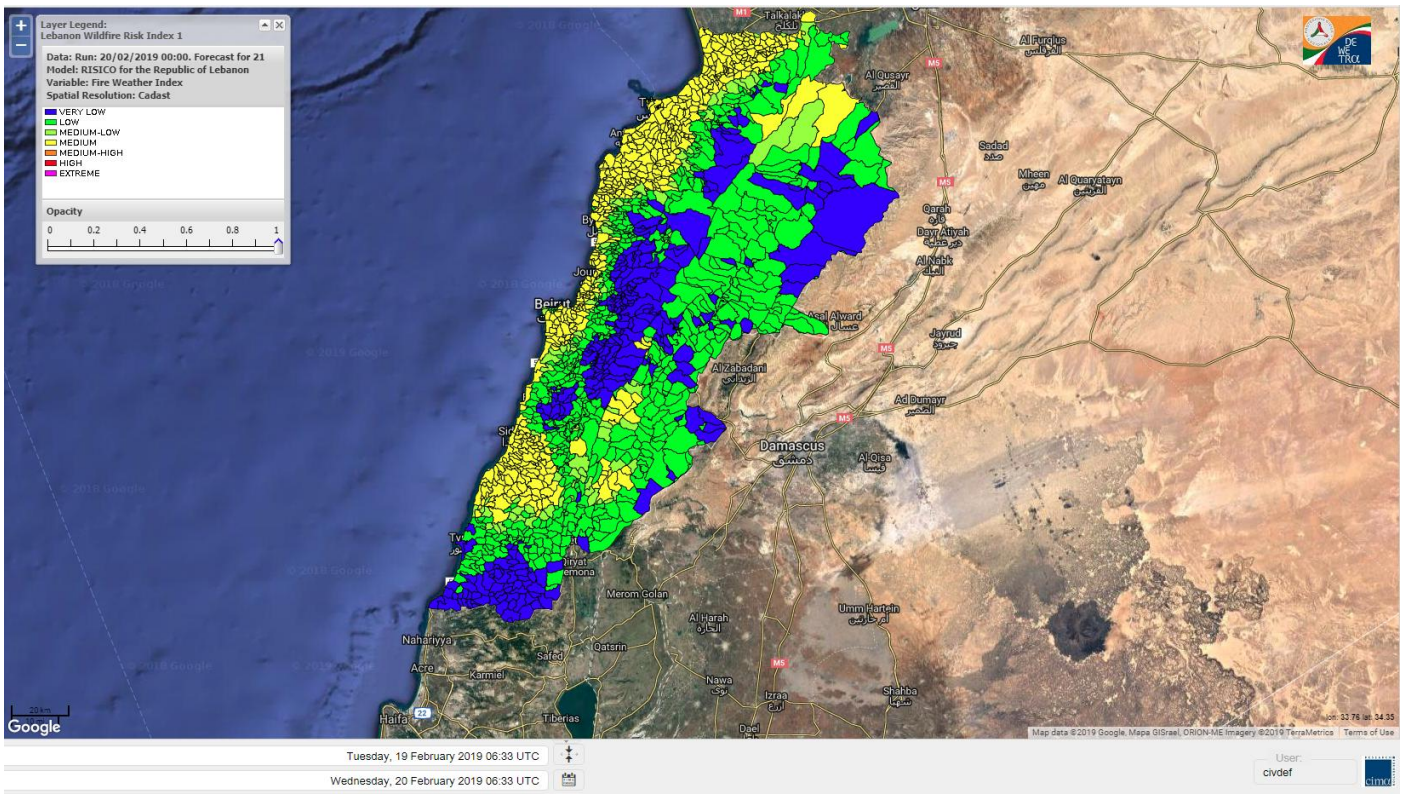
Lebanon humidity for Lebanon 20 February 2019



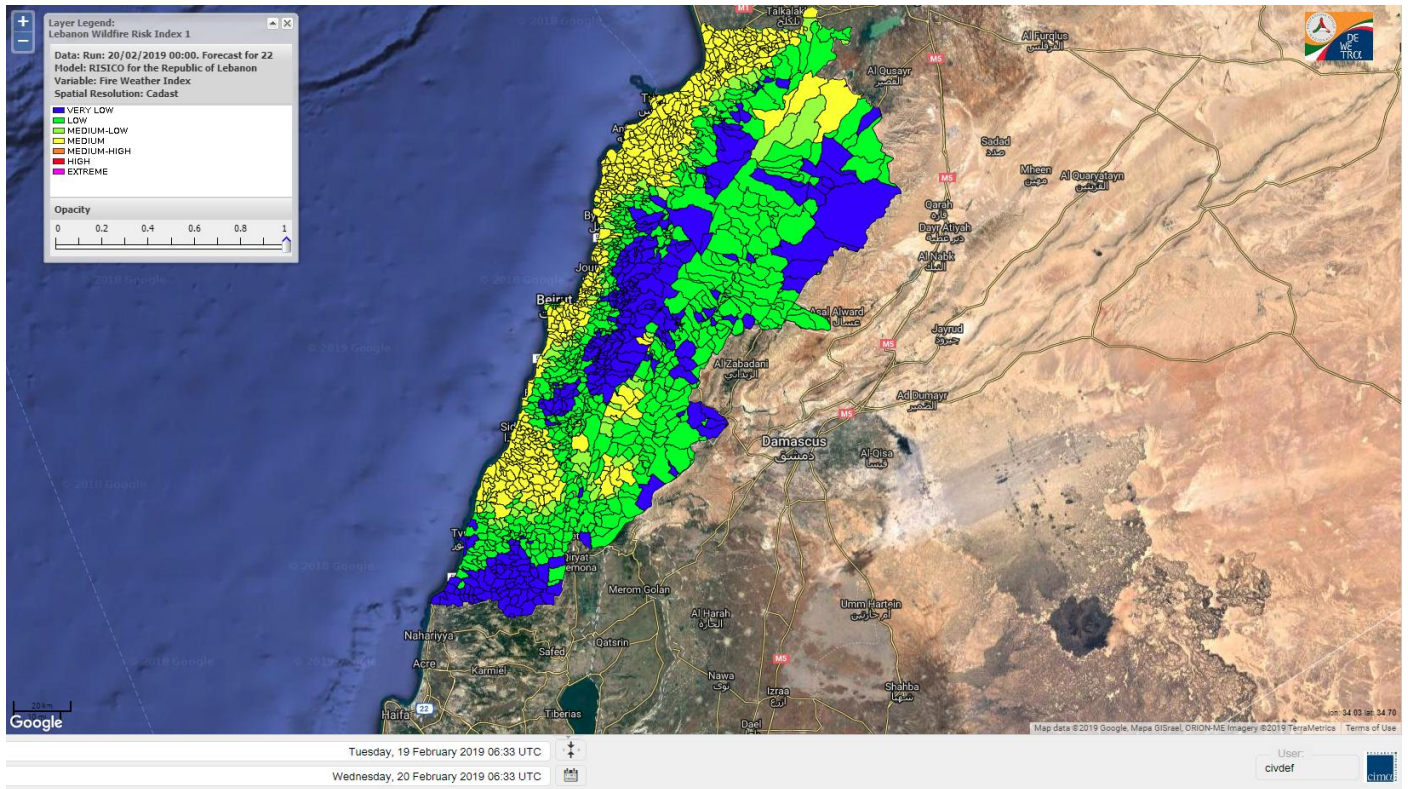
Lebanon for 20 February 2019



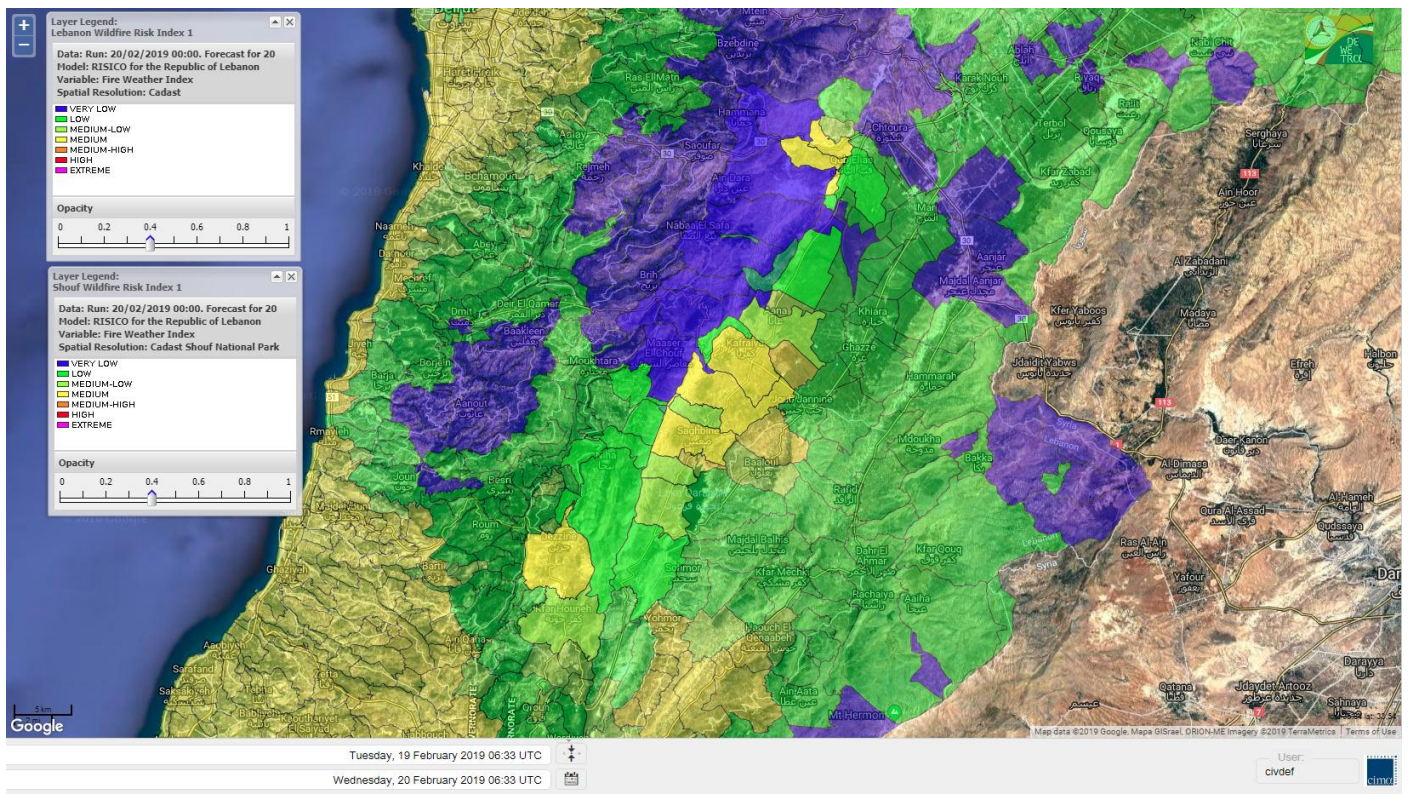
Lebanon for 21 February 2019



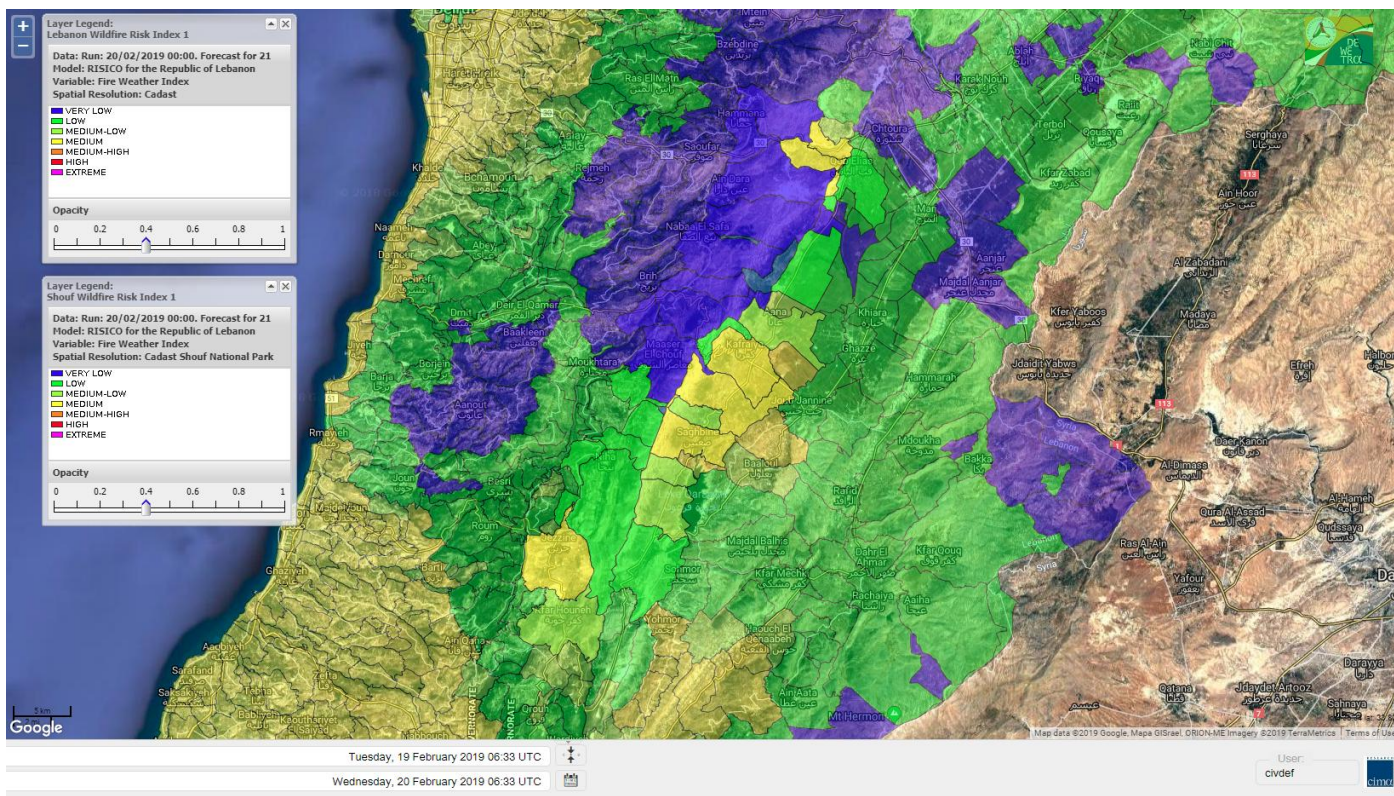
Lebanon for 22 February 2019



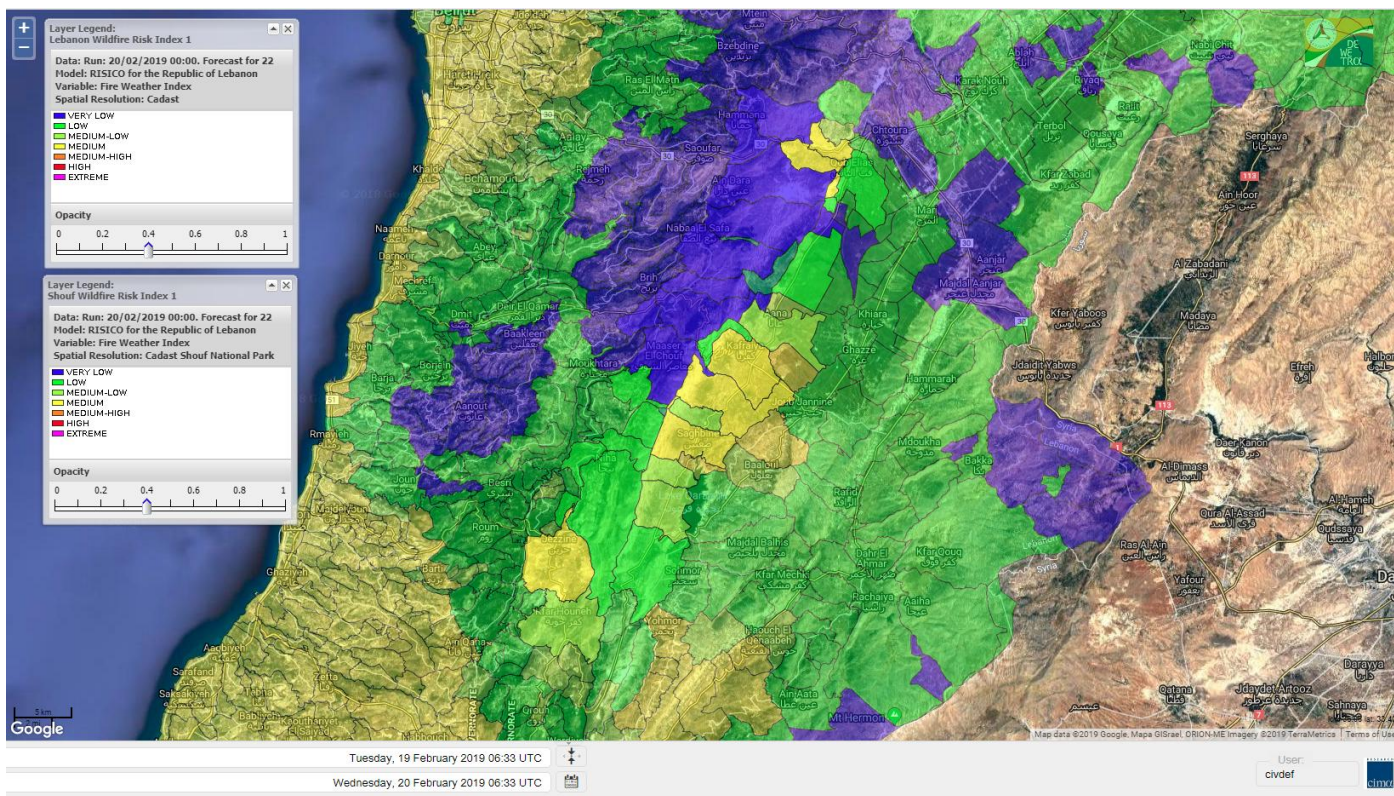
Shouf Biosphere Reserve Forecast for 20 February 2019



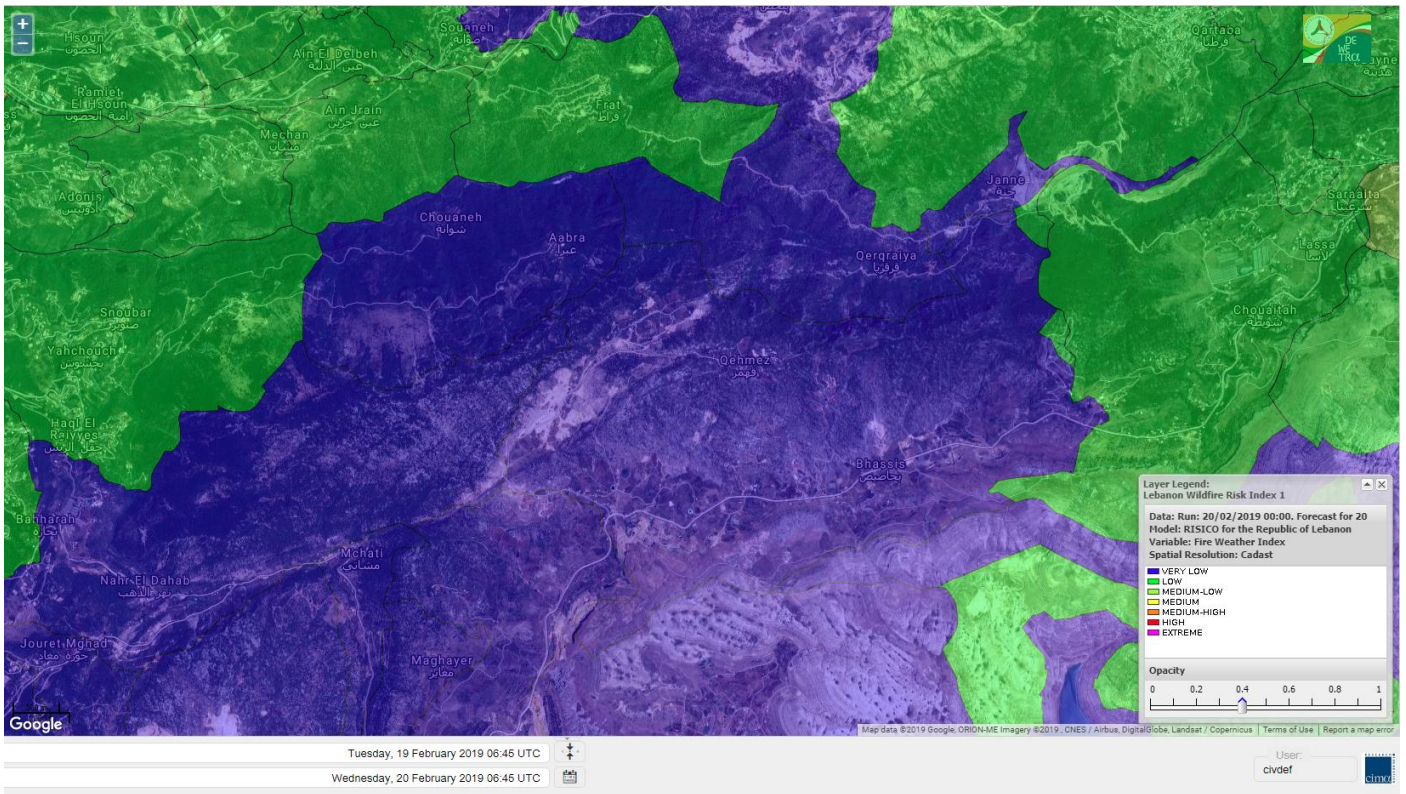
Shouf Biosphere Reserve Forecast for 21 February 2019



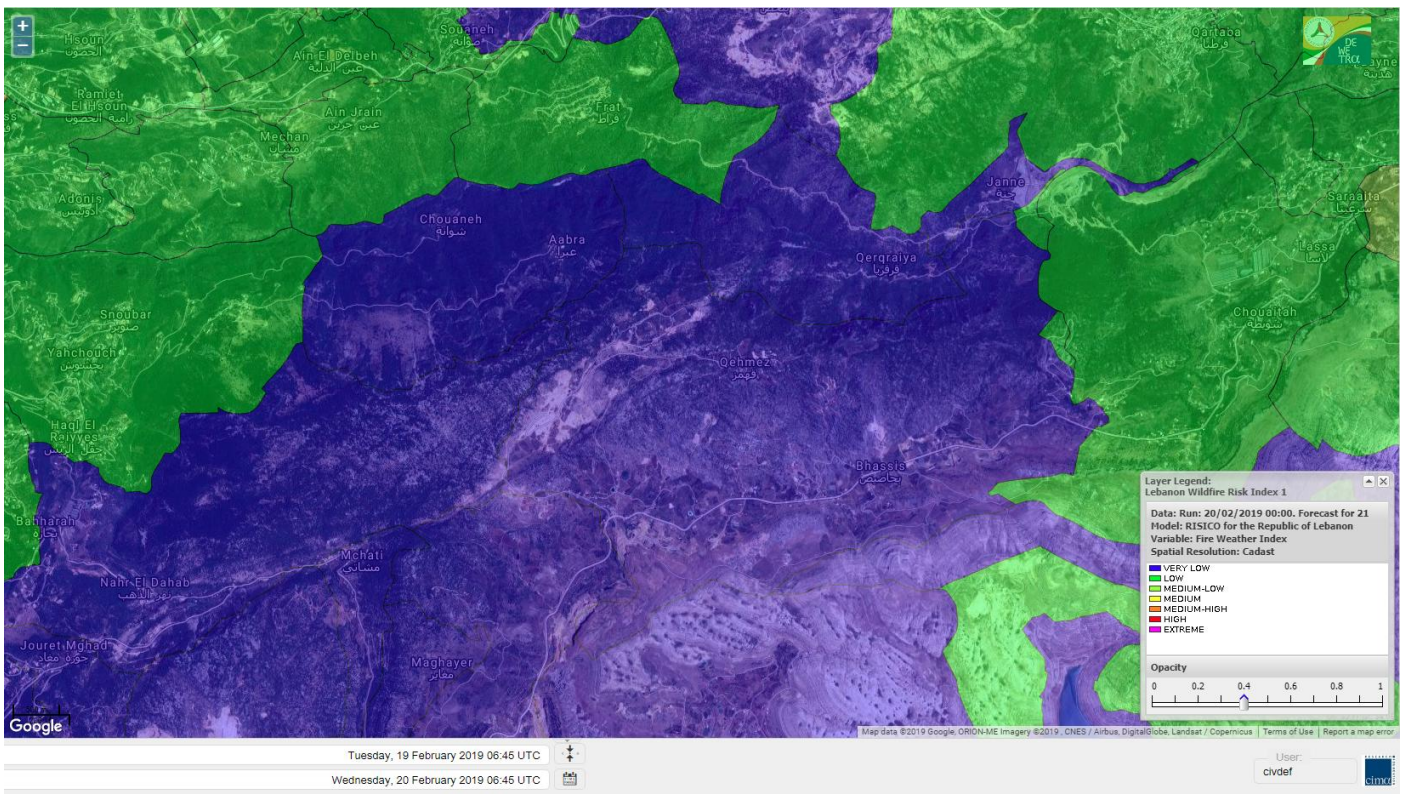
Shouf Biosphere Reserve Forecast for 22 February 2019



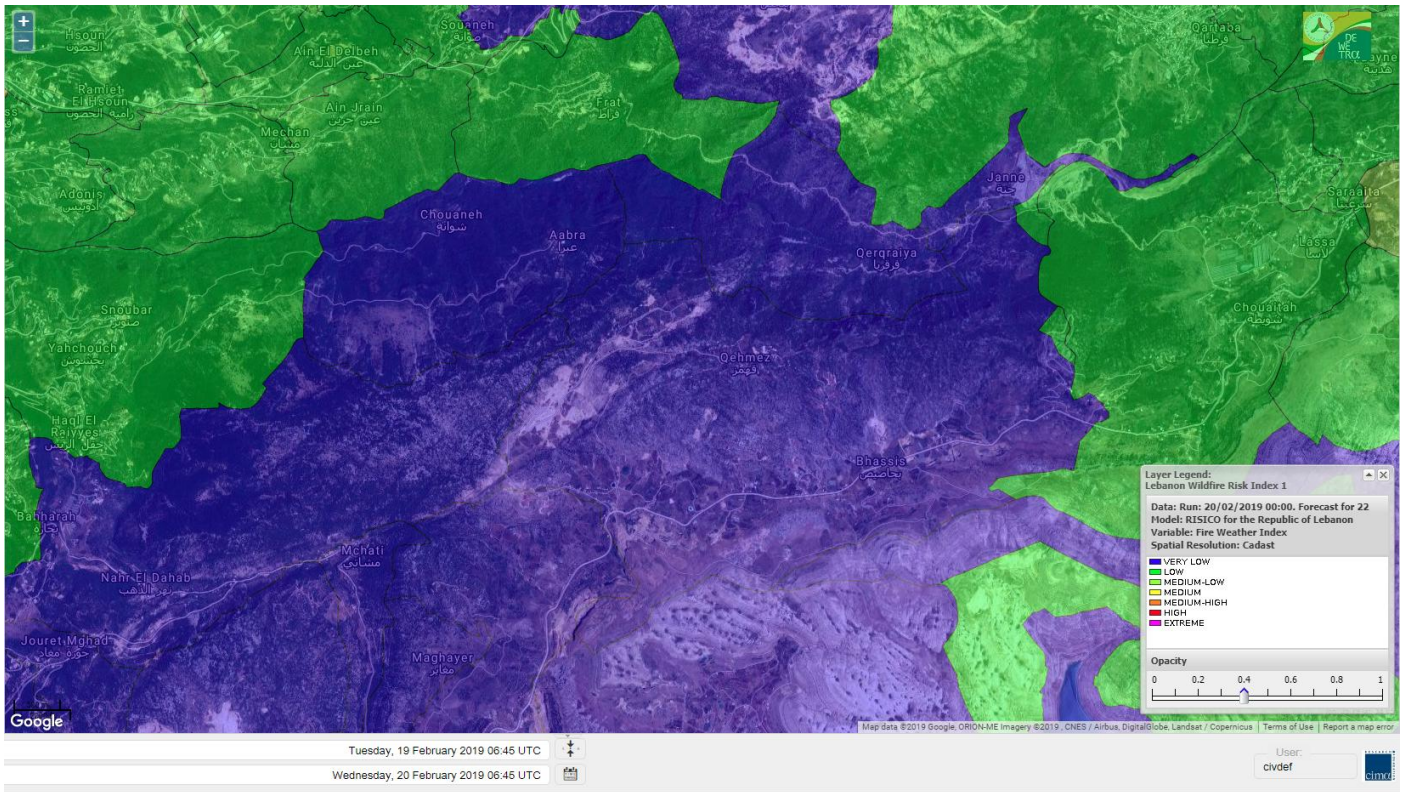
Jabal Moussa Reserve Forecast for 20 February 2019



Jabal Moussa Reserve Forecast for 21 February 2019



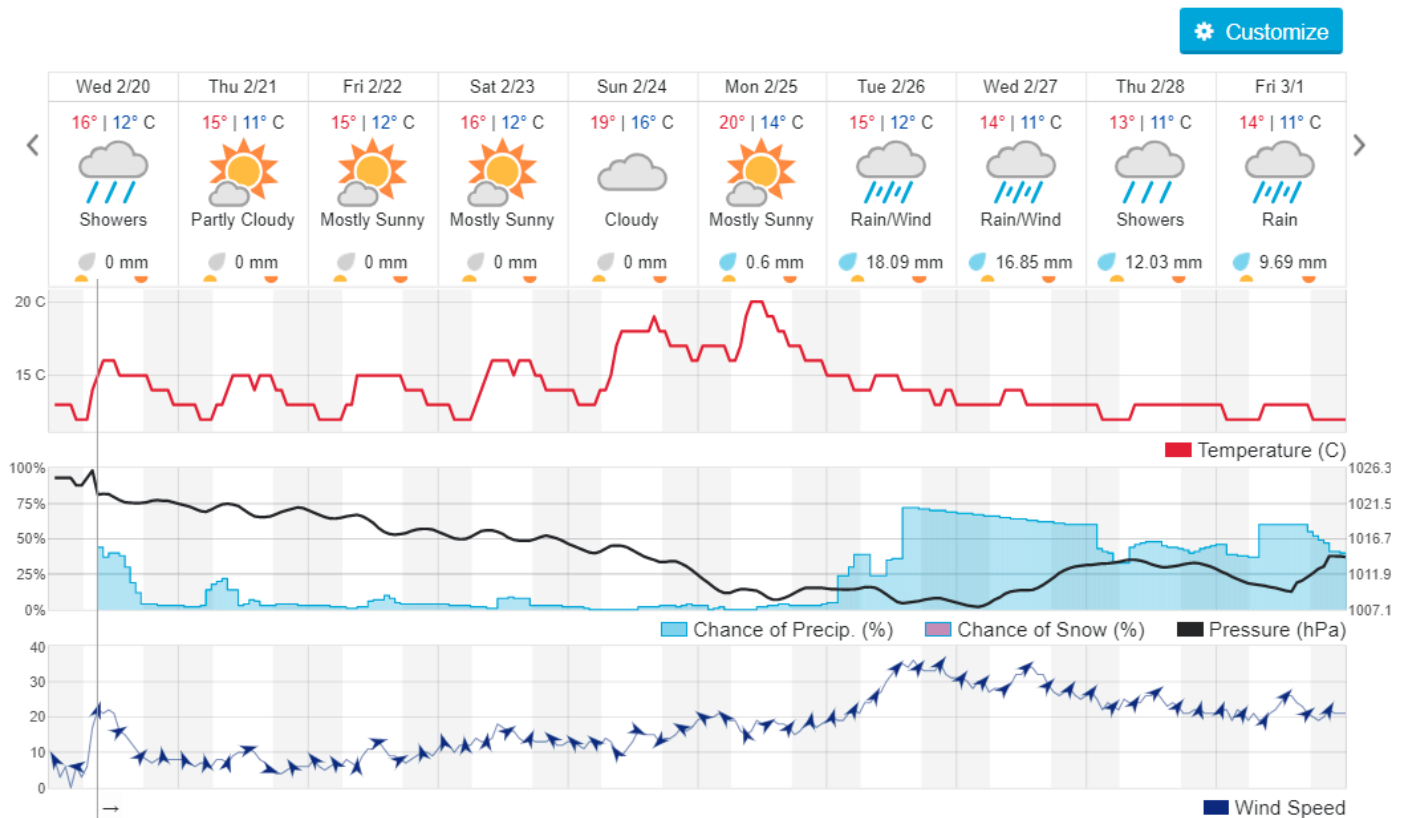
Jabal Moussa Reserve Forecast for 22 February 2019



Beirut, Lebanon

14° ACHRAFIEH, RIZK STATION | REPORT | CHANGE

TODAY HOURLY **10-DAY** CALENDAR HISTORY WUNDERMAP



Nord

Koura

Municipality	20-Feb	21-Feb	22-Feb	Municipality	20-Feb	21-Feb	22-Feb	Municipality	20-Feb	21-Feb	22-Feb
Aaba	M	M	M	Afsaddiq	M	M	M	Ain Ekrine	M	M	M
Amioun	M	M	M	Anfeh	M	M	M	Badbhoun	M	M	M
Barghoun	M	M	M	Barsa	M	M	M	Batroumine	M	M	M
Bdebba	M	M	M	Bechmizine	M	M	M	Bednayel El-Koura	M	M	M
Bhabbouch El-Koura	M	M	M	Bkeftine	M	M	M	Bnehran	M	M	M
Bqaiia El-Koura	M	M	M	Bsarma	M	M	M	Btaaboura	M	M	M
Bterram	M	M	M	Btouratij	M	M	M	Bziza	M	M	M
Dar Beehtar	M	M	M	Dar Chmezzine	M	M	M	Deddeh	M	M	M
Deir El-Balamand	M	M	M	Fih	M	M	M	Hraiche	M	M	M
Ijdaabrine	M	M	M	Kaftoun	M	M	M	Kefraya El-Koura	M	M	M
Kfarakka	M	M	M	Kfarhata	M	M	M	Kfarhazir	M	M	M
Kfarkahel	M	M	M	Kfarsaroun	M	M	M	Kosba	M	M	M
Mejdel el-Koura	M	M	M	Nakhle	M	M	M	Qalhat	M	M	M
Ras Masqa	M	M	M	Rechdibbine	M	M	M	Zakroun	M	M	M
Zgharta El-Mtaouile	M	M	M								

Bcharre

Municipality	20-Feb	21-Feb	22-Feb	Municipality	20-Feb	21-Feb	22-Feb	Municipality	20-Feb	21-Feb	22-Feb
Aabdine	M	M	M	Bane	L	L	L	Barhelioun	M	M	M
Bazouone	VL	VL	VL	Becharre	VL	VL	VL	Beit Menzer	L	L	L
Billa	ML	ML	ML	Blaouza	ML	ML	ML	Bqaa Kafra	VL	VL	VL
Bqerqacha	VL	VL	VL	Breissat	VL	VL	VL	Dimane	VL	VL	VL
Hadath El Jobbeh	L	L	L	Hadchit	VL	VL	VL	Hasroun	VL	VL	VL
Mazraat Aassaf	M	M	M	Mazraat Bani Saab	M	M	M	Mchaa El-Jobbeh	VL	VL	VL
Metrit	M	M	M	Moghr El-Ahoual	M	M	M	Ouadi Qannoubine	L	L	L
Qanat	L	L	L	Qnayouer	L	L	L	Tourza	M	M	M

Batroun

Municipality	20-Feb	21-Feb	22-Feb	Municipality	20-Feb	21-Feb	22-Feb	Municipality	20-Feb	21-Feb	22-Feb
Aabrine	M	M	M	Aalali	ML	ML	ML	Aartiz	M	M	M
Abdelli	M	M	M	Ajdabra	M	M	M	Assia	ML	ML	ML
Basbina	M	M	M	Batroun	M	M	M	Bcheleh	L	L	L
Bechtoudar	M	M	M	Beit Chlala	M	M	M	Beit Kassab	M	M	M
Bijdarfil	M	M	M	Bqesmaya	M	M	M	Chatine	L	L	L
Chebthin	M	M	M	Chekka	M	M	M	Daael	M	M	M
Dahr Abi Yaghi	L	L	L	Daraya El-Batroun	M	M	M	Deir Billa	M	M	M
Deir Kfifane	M	M	M	Deir Mar Youhanna EL	M	M	M	Deir Mar Youssef Jra	M	M	M
Douma	ML	ML	ML	Douq	M	M	M	Eddeh El-Batroun	M	M	M
Ftihat El-Batroun	M	M	M	Ghouma	M	M	M	Hadtoun	L	L	L
Hamat	M	M	M	Harbouna	M	M	M	Hardine	M	M	M
Helta	M	M	M	Hery	M	M	M	Jebila	M	M	M
Jrabta El-Batroun	M	M	M	Jrane El-Batroun	M	M	M	Kfar Aabida	M	M	M
Kfar Halda	M	M	M	Kfarb Shlaimane	M	M	M	Kfarhatna	M	M	M
Kfarhay	M	M	M	Kfarhelos	M	M	M	Kfifane	M	M	M

Kfour El Arabi	M	M	M	Koubba	M	M	M	Kour	M	M	M
Mar Mama	L	L	L	Masrah	L	L	L	Mehmarch	ML	ML	ML
Mrah Chdid	M	M	M	Mrah El Ziyat	M	M	M	Mrah El-Hajj	L	L	L
Nahle El-Batroun	M	M	M	Niha El-Batroun	ML	ML	ML	Oujah El-Hajjar	M	M	M
Ouata Houb	L	L	L	Qatnaaoun	M	M	M	Racha	ML	ML	ML
Rachana	M	M	M	Rachkida	M	M	M	Ram El-Batroun	VL	VL	VL
Ras Nahhach	M	M	M	Selaata	M	M	M	Sghar	M	M	M
Smar Jbayl	M	M	M	Sourat El-Batroun	M	M	M	Tannourine El-Faouqa	L	L	L
Tannourine Et-Tahta	L	L	L	Thoum	M	M	M	Toula El-Batroun	M	M	M
Zan	M	M	M								

Zgharta

Municipality	20-Feb	21-Feb	22-Feb	Municipality	20-Feb	21-Feb	22-Feb	Municipality	20-Feb	21-Feb	22-Feb
Aachach	M	M	M	Aalma	M	M	M	Aarde	M	M	M
Aintourine	ML	ML	ML	Arabet Qozhaya	ML	ML	ML	Arde	M	M	M
Arjis	M	M	M	Asnoun	M	M	M	Ayto	ML	ML	ML
Basloukit	VL	VL	VL	Bchannine	M	M	M	Besebeel	M	M	M
Bhairat Toula	ML	ML	ML	Bnachee	M	M	M	Boussit	M	M	M
Danha	M	M	M	Daraiya Zgharta	M	M	M	Deir Jdeide	M	M	M
Ehden	L	L	L	Halan	M	M	M	Hariq Zgharta	M	M	M
Houakir	M	M	M	Hraiqis	M	M	M	Iaal	M	M	M
Ijbaa	L	L	L	Karm Saddeh	M	M	M	Kfarchakhna	M	M	M
Kfardlaqous	M	M	M	Kfarfou	M	M	M	Kfarhata Zgharta	M	M	M
Kfarhoura	M	M	M	Kfarsghab	L	L	L	Kfaryachit	M	M	M
Kfarzaina	M	M	M	Khaldiye	M	M	M	Mazraat Ajbeaa	M	M	M
Mazraat Et-Teffah	ML	ML	ML	Mazraat Jneid	M	M	M	Mejdlaiya Zgharta	M	M	M
Merh Kfarsghab	M	M	M	Miryata	M	M	M	Miziara	M	M	M
Mzraat Kefraya	M	M	M	Qorah Bach	M	M	M	Rachiine	M	M	M
Ras Kifa	M	M	M	Sakhra	M	M	M	Sebhel Zgharta	M	M	M
Serhel	M	M	M	Tallet Zgharta	M	M	M	Toula Zgharta	L	L	L
Zgharta	M	M	M								

Minieh-Denniye

Municipality	20-Feb	21-Feb	22-Feb	Municipality	20-Feb	21-Feb	22-Feb	Municipality	20-Feb	21-Feb	22-Feb
Aasaymout	L	L	L	Aaymar	L	L	L	Aazki	M	M	M
Ain El-Tineh-Miniyeh	VL	VL	VL	Assoun	L	L	L	Bakhaaoun	ML	ML	ML
Bchennata	L	L	L	Bechehhara	M	M	M	Beddawi	M	M	M
Behouaita	L	L	L	Beit El Foqss	VL	VL	VL	Beit Haouik	ML	ML	ML
Beit Zoud	L	L	L	Bekaasafrine	VL	VL	VL	Borj El Yahoudiyeh	M	M	M
Bqarsouna	VL	VL	VL	Btermaz	L	L	L	Debaael	L	L	L
Deir Ammar	M	M	M	Deir Nbouh	M	M	M	Haouaret-Miniyeh	L	L	L
Haql el Azimeh	L	L	L	Harf El Siyad	L	L	L	Hazmiye-Miniyeh	VL	VL	VL
Izal	L	L	L	Jarjour	M	M	M	Jayroun	VL	VL	VL
Kahf El-Malloul	M	M	M	Karm El-Moher	L	L	L	Kfar Binine	VL	VL	VL
Kfarchalane	ML	ML	ML	Kfarhabou	M	M	M	Kharroub-Miniyeh	M	M	M
Mazraat El-Kreme	L	L	L	Mazraat Ketrane	L	L	L	Merkebta	M	M	M
Minyeh	M	M	M	Mrah El Sfirat	L	L	L	Mrah Sraj	L	L	L
Mrebbine	L	L	L	Nabi Youcheaa	M	M	M	Nemrine	VL	VL	VL

Qarhaiya	ML	ML	ML	Qarne	L	L	L	Qarsita	VL	VL	VL
Qattineh-Miniyeh	L	L	L	Qemmamine	L	L	L	Qraine	L	L	L
Raouda-Aadoua	M	M	M	Rihaniyet-Miniyeh	M	M	M	Sfireh	L	L	L
Sir Ed-Danniyeh	VL	VL	VL	Tarane	L	L	L	Terbol-Miniyeh	M	M	M
Zaghartaghriine	M	M	M	Zouq Bhannine	M	M	M				

Nabatiye

Nabatiye

Municipality	20-Feb	21-Feb	22-Feb	Municipality	20-Feb	21-Feb	22-Feb	Municipality	20-Feb	21-Feb	22-Feb
Aabba	ML	ML	ML	Aazzi	M	M	M	Adchit El-Chqif	L	L	L
Ain Bou Swar	M	M	M	Ain Kana	M	M	M	Ali El-TaHER	L	L	L
Ansar	M	M	M	Arab Salim	M	M	M	Arnoun	L	L	L
Bfaroue	M	M	M	Breyqaah	ML	ML	ML	Charqiyeh	M	M	M
Choukine	M	M	M	Deir El Zahrani	M	M	M	Doueir El-Nabatiyeh	M	M	M
Habbouch El-Nabatiye	M	M	M	Hamra El-Nabatiyeh	L	L	L	Harouf El-Nabatiyeh	M	M	M
Hmaile	M	M	M	Houmin El Faouqa	M	M	M	Houmin El Tahta	M	M	M
Jarjough	ML	ML	ML	Jbaah El-Nabatiyeh	L	L	L	Jebchit	ML	ML	ML
Kfar Djal El-Nabatiy	ML	ML	ML	Kfar Remmane	M	M	M	Kfar Sir	L	L	L
Kfar Tebnit	L	L	L	Kfarfila	M	M	M	Kfour El-Nabatieh	M	M	M
Mayfadoun	ML	ML	ML	Mazraat Bsaffour	M	M	M	Mazraat Chalbaal	ML	ML	ML
Mazraat Dmoul	L	L	L	Mazraat El Khreibeh	M	M	M	Mazraat El-Bayad El-	M	M	M
Mazraat Kfarjaouz	M	M	M	Mazraat Qalaat Meiss	L	L	L	Nabatiyeh El-Fawka	ML	ML	ML
Nabatiyeh Et-Tahta	M	M	M	Namiriyeh	M	M	M	Qaaqaaiyet El Jisr	ML	ML	ML
Qossaibeh El-Nabatiy	ML	ML	ML	Roumine	M	M	M	Sarba El-Nabatieh	M	M	M
Sir El-Gharbiyeh	L	L	L	Toul	M	M	M	Yehmor El-Nabatiyeh	L	L	L
Zaoutar El Charqiyeh	L	L	L	Zaoutar El-Gharbiyeh	L	L	L	Zebdine El-Nabatiyeh	M	M	M
Zefta	M	M	M								

Hasbaiya

Municipality	20-Feb	21-Feb	22-Feb	Municipality	20-Feb	21-Feb	22-Feb	Municipality	20-Feb	21-Feb	22-Feb
Aain Jarfa	ML	ML	ML	Abou Qamha	ML	ML	ML	Ain Qania	ML	ML	ML
Bourghos	ML	ML	ML	Chebaa	L	L	L	Chouaya Hasbaya	L	L	L
Dellafeh	M	M	M	Fardiss Hasbaiya	L	L	L	Hasbaya	M	M	M
Hbariyeh	L	L	L	Kaoukaba Hasbaiya	ML	ML	ML	Kfar Chouba	L	L	L
Kfar Hamam	L	L	L	Kfeir El-Zait	M	M	M	Khalwat Hasbaya	L	L	L
Khreibet Hasbaiya	VL	VL	VL	Majidiyeh Hasbaiya	VL	VL	VL	Marj Ez-Zhour (Haouc	M	M	M
Meri	VL	VL	VL	Mimass	M	M	M	Rachaiya El-Fokhar	L	L	L
Salaiyeb	VL	VL	VL								

Marjayoun

Municipality	20-Feb	21-Feb	22-Feb	Municipality	20-Feb	21-Feb	22-Feb	Municipality	20-Feb	21-Feb	22-Feb
Aalmane Marjaayoun	L	L	L	Aamra	VL	VL	VL	Adayseh Marjaayoun	VL	VL	VL
Adchit El-Koussair	L	L	L	Ain Aarab Marjaayoun	VL	VL	VL	Bani Haiyann	VL	VL	VL
Blatt Marjaayoun	L	L	L	Blida	VL	VL	VL	Borj El-Moulouk	VL	VL	VL
Boueyda Marjaayoun	L	L	L	Deir Mimass	VL	VL	VL	Deir Siriane	L	L	L
Dibbine	VL	VL	VL	Ebel El Saqi	L	L	L	Houla	VL	VL	VL
Houra	VL	VL	VL	Kfar Kila	VL	VL	VL	Khiam Marjaayoun	VL	VL	VL

Klayaa	VL	VL	VL	Majdel Selem	VL	VL	VL	Marjaayoun	VL	VL	VL
Markaba	VL	VL	VL	Mays El-Jabal	VL	VL	VL	Mazraat Doumiat	VL	VL	VL
Mazraat Sarada	VL	VL	VL	Mhaibib	VL	VL	VL	Qabrikha	VL	VL	VL
Qantara	VL	VL	VL	Rab El-Thalathine	VL	VL	VL	Saouaneh Marjayoun	VL	VL	VL
Talloussa	VL	VL	VL	Taybeh Matjaayoun	VL	VL	VL	Touline	VL	VL	VL

Bent Jbail

Municipality	20-Feb	21-Feb	22-Feb	Municipality	20-Feb	21-Feb	22-Feb	Municipality	20-Feb	21-Feb	22-Feb
Ain-Ebel	VL	VL	VL	Aitaroun	VL	VL	VL	Aynata Bint Jbeil	VL	VL	VL
Ayta El-Chaeb	VL	VL	VL	Ayta El-Jabal	VL	VL	VL	Beit Lif	VL	VL	VL
Beit Yahoun	VL	VL	VL	Bint Jbeil	VL	VL	VL	Borj Qalaway	VL	VL	VL
Braachit	VL	VL	VL	Chakra	VL	VL	VL	Debel	VL	VL	VL
Deir Antar	VL	VL	VL	Froun	L	L	L	Ghandouriyeh Bint Jb	VL	VL	VL
Hanine	VL	VL	VL	Hariss	VL	VL	VL	Hdatha	VL	VL	VL
Jmeymeh	VL	VL	VL	Kafra Bint Jbeil	VL	VL	VL	Kfar Dounine	VL	VL	VL
Khirbet Selm	VL	VL	VL	Kounine	VL	VL	VL	Maroun El Ras	VL	VL	VL
Qalaway	VL	VL	VL	Qaouzah	VL	VL	VL	Qatmoun	VL	VL	VL
Ramya Bint Jbeil	VL	VL	VL	Rchaf	VL	VL	VL	Rmeich	VL	VL	VL
Safad Al Battikh	VL	VL	VL	Salhaneh	VL	VL	VL	Serbine	VL	VL	VL
Sultanieh Bint Jbeil	VL	VL	VL	Tibnine	VL	VL	VL	Tiri	VL	VL	VL
Yaroun	VL	VL	VL	Yater	VL	VL	VL				

Mont Liban

Jbail

Municipality	20-Feb	21-Feb	22-Feb	Municipality	20-Feb	21-Feb	22-Feb	Municipality	20-Feb	21-Feb	22-Feb
Aabeydat	L	L	L	Aalita	M	M	M	Aamchit	M	M	M
Aarab El-Lahib	VL	VL	VL	Aarasta	L	L	L	Adonis Jbeil	L	L	L
Afqa Jbeil	VL	VL	VL	Ain El Delbeh Jbeil	VL	VL	VL	Ain El-Ghouayba	L	L	L
Ain Jrain	VL	VL	VL	Ain Kfah	ML	ML	ML	Almat El Chemaliyat	VL	VL	VL
Almat El-Jenoubiya	VL	VL	VL	Aqoura	VL	VL	VL	Bayzoun	VL	VL	VL
Bchille Jbeil	L	L	L	Bechtlida	L	L	L	Behdaydat	ML	ML	ML
Beit Habbaq	ML	ML	ML	Bejjeh	ML	ML	ML	Bekhaaz	M	M	M
Berbara Jbeil	M	M	M	Bintael	L	L	L	Birket Hjoula	L	L	L
Blatt Jbeil	ML	ML	ML	Boulhos	VL	VL	VL	Breyj Jbeil	L	L	L
Chamat	M	M	M	Chikhane	M	M	M	Chmout	M	M	M
Eddeh Jbeil	M	M	M	Ehmej	VL	VL	VL	Fatre	M	M	M
Ferhet	VL	VL	VL	Fghal	M	M	M	Frat	L	L	L
Ghabat	ML	ML	ML	Ghalboun	ML	ML	ML	Gharzouz	M	M	M
Ghofrine	M	M	M	Habil	VL	VL	VL	Halate	M	M	M
Haqel	L	L	L	Hbaline	M	M	M	Hboub	ML	ML	ML
Hdeine	L	L	L	Hema Er-Rehban	VL	VL	VL	Hema Mar Maroun Aann	VL	VL	VL
Hjoula	VL	VL	VL	Hosrayel	M	M	M	Hsarat	M	M	M
Hsoun	L	L	L	Jaj	VL	VL	VL	Janne	VL	VL	VL
Jbeil	M	M	M	Jeddeyl Jbeil	M	M	M	Jlisse	L	L	L
Jouret El-Qattine	L	L	L	Kfar Baal Annaya	VL	VL	VL	Kfar Kidde	M	M	M
Kfar Kouas	L	L	L	Kfar Mashoun	M	M	M	Kfoun	L	L	L

Kharbe Jbeil	ML	ML	ML	Laqlouq	VL	VL	VL	Lassa	L	L	L
Lehfed	L	L	L	Maad	M	M	M	Mar Sarkis	L	L	L
Mastita	ML	ML	ML	Mayfouq	L	L	L	Mazraat El Siyad	VL	VL	VL
Mazraat El-Maaden	VL	VL	VL	Mechane	VL	VL	VL	Mechmech Jbeil	VL	VL	VL
Mehrin	ML	ML	ML	Mejdel El-Akoura	L	L	L	Mghayreh Jbeil	L	L	L
Mounsef	M	M	M	Nahr Ibrahim	M	M	M	Qahmez	VL	VL	VL
Qartaba	L	L	L	Qartaboun	ML	ML	ML	Qattara Jbeil	VL	VL	VL
Qorqraya	VL	VL	VL	Ramout	ML	ML	ML	Ras Osta	L	L	L
Rihane Jbeil	L	L	L	Sakiet El-Khayt	L	L	L	Saqi Richmaya	VL	VL	VL
Sebrine	L	L	L	Seraita	L	L	L	Souane Jbeil	L	L	L
Tadmor	VL	VL	VL	Tartej	VL	VL	VL	Torzaiya	VL	VL	VL
Yanouh Jbeil	ML	ML	ML	Zibidine Jbeil	L	L	L				

El Metn

Municipality	20-Feb	21-Feb	22-Feb	Municipality	20-Feb	21-Feb	22-Feb	Municipality	20-Feb	21-Feb	22-Feb
Aain El-Qabu	VL	VL	VL	Aain El-Qach	VL	VL	VL	Aain El-Teffaha	VL	VL	VL
Aain el-Safssaf El-M	VL	VL	VL	Abou Mizane	VL	VL	VL	Ain Aar	L	L	L
Ain Alaq	VL	VL	VL	Ain El-Kharroube	VL	VL	VL	Ain El-Sendianeh	VL	VL	VL
Ain El-Zeitoune	VL	VL	VL	Ain Saadeh	M	M	M	Aintoura El-Matn	VL	VL	VL
Amaret Chalhoub	M	M	M	Antelias	M	M	M	Atchaneh	VL	VL	VL
Ayroun	VL	VL	VL	Baabdat	L	L	L	Baouchariyeh	M	M	M
Baskinta	VL	VL	VL	Beit Chabab	L	L	L	Beit El-Chaar	M	M	M
Beit El-Kekko	L	L	L	Beit Mery	M	M	M	Bhersaf	VL	VL	VL
Bikfaya	VL	VL	VL	Biyakout	M	M	M	Bnabil	VL	VL	VL
Bourj Hammoud	M	M	M	Bqennaya	M	M	M	Broummana El-Matn	L	L	L
Bsalim	M	M	M	Bsifrine	VL	VL	VL	Bteghrine	VL	VL	VL
Chaouiye	L	L	L	Chouaya El-Matn	VL	VL	VL	Choueir	VL	VL	VL
Chrine	VL	VL	VL	Dahr El Sawan El-Mat	VL	VL	VL	Daychouniyeh	M	M	M
Dbayeh	M	M	M	Deir Chamra	VL	VL	VL	Deir Mar Abda el Mch	M	M	M
Deir Mar Roukouz	M	M	M	Deir Tamiche	M	M	M	Dik El-Mehdi	M	M	M
Dikwaneh	M	M	M	Douar El-Matn	VL	VL	VL	Fanar	M	M	M
Fraike	M	M	M	Haret El-Ballaneh	M	M	M	Hbous	VL	VL	VL
Himlaya	VL	VL	VL	Jal El Did	M	M	M	Jdeideh El-Metn	M	M	M
Jouar El-Matn	VL	VL	VL	Jouret El-Ballout	ML	ML	ML	Kaaqour	VL	VL	VL
Kfar Aaqab	VL	VL	VL	Kfertay El-Matn	VL	VL	VL	Khenchara	VL	VL	VL
Khillat El-Mtain	VL	VL	VL	Konnabat Broummana	ML	ML	ML	Konnabat Salima	L	L	L
Machraah El-Matn	VL	VL	VL	Majdel Tarchich	VL	VL	VL	Majzoub	M	M	M
Mansouriyeh El-Metn	M	M	M	Mar Boutros Karm Et-	L	L	L	Mar Chaya et Mzekke	L	L	L
Mar Moussa Ed-Douar	VL	VL	VL	Marjaba	VL	VL	VL	Masqa	L	L	L
Mayasse	L	L	L	Mazraat Deir Aoukar	M	M	M	Mazraat El-Hadirat	M	M	M
Mazraat Yachouh	M	M	M	Mchikha	VL	VL	VL	Menqlet Mezher	M	M	M
Mhaydseh Matn	VL	VL	VL	Mkalles	M	M	M	Mrouj	VL	VL	VL
Mtain	VL	VL	VL	Mtayleb	M	M	M	Nabay	M	M	M
Naccache	M	M	M	Ouadi Chahine	L	L	L	Ouadi El-Karm El-Mat	VL	VL	VL
Ouata El-Mrouj	VL	VL	VL	Ouyoun El-Matn	L	L	L	Qornet Chehwan	ML	ML	ML
Qornet El-Hamra	ML	ML	ML	Roumieh	M	M	M	Sfeilet Bikfaya	L	L	L
Sinn El-Fil	M	M	M	Zabbougha	VL	VL	VL	Zalqa	M	M	M

Zaroun	VL	VL	VL	Zekrite	M	M	M	Zighrine El-Matn	VL	VL	VL
Zouk El-Khrab	M	M	M								

Chouf

Municipality	20-Feb	21-Feb	22-Feb	Municipality	20-Feb	21-Feb	22-Feb	Municipality	20-Feb	21-Feb	22-Feb
Aalmane El-Chouf	M	M	M	Aammiq El-Chouf	L	L	L	Ain Ouzein	VL	VL	VL
Ain Qani	L	L	L	Ain Zhalta	VL	VL	VL	Ainbal	VL	VL	VL
Amatour	L	L	L	Anout	VL	VL	VL	Atrine	VL	VL	VL
Baadarane	L	L	L	Baaqline	VL	VL	VL	Baasir	L	L	L
Barja	L	L	L	Barouk	VL	VL	VL	Bater	L	L	L
Batloun	VL	VL	VL	Bayqoun	L	L	L	Bchetfine	L	L	L
Beiteddine	VL	VL	VL	Benouati Ech-Chouf	VL	VL	VL	Berjein	VL	VL	VL
Bireh et Mtalleh	VL	VL	VL	Biret El-Chouf	VL	VL	VL	Bkechtine Ouel Mchei	L	L	L
Bkifa El-Chouf	VL	VL	VL	Botme	VL	VL	VL	Bqaiaa Ech-Chouf	L	L	L
Bsaba El-Chouf	L	L	L	Chammis El-Chouf	VL	VL	VL	Chehim	VL	VL	VL
Chemaarine	VL	VL	VL	Chourit	VL	VL	VL	Daher El-Chouf	VL	VL	VL
Dalhoun	VL	VL	VL	Damour	M	M	M	Daraya El-Chouf	VL	VL	VL
Deir El-Moukhalles	VL	VL	VL	Deir Baba	L	L	L	Deir Dourit	VL	VL	VL
Deir El-Qamar	L	L	L	Deir Kouche	L	L	L	Dibbieh	L	L	L
Dmit	L	L	L	Fouara Jaafar	VL	VL	VL	Fraidis El-Chouf	VL	VL	VL
Ghabet Jaafar	L	L	L	Gharife	VL	VL	VL	Haret Jandal	L	L	L
Hasrout	VL	VL	VL	Jadra	M	M	M	Jahlieh	VL	VL	VL
Jbeih El-Chouf	L	L	L	Jdeidet El-Chouf	L	L	L	Jiyeh	M	M	M
Jleilyeh	VL	VL	VL	Jmailiyeh	ML	ML	ML	Joun	L	L	L
Kahlounie El-Chouf	L	L	L	Ketermaya	VL	VL	VL	Kfar Faqoud	L	L	L
Kfar Hamal	L	L	L	Kfar Him	L	L	L	Kfar Katra	L	L	L
Kfar Niss	VL	VL	VL	Kfar hay	VL	VL	VL	Kfarnabrakh	VL	VL	VL
Khirbet Bisri	L	L	L	Knayse El-Chouf	L	L	L	Maaniyeh	VL	VL	VL
Maasser Beiteddine	VL	VL	VL	Maasser El-Chouf	VL	VL	VL	Majdalouna	L	L	L
Majdel El-Meouch	VL	VL	VL	Mazboud	VL	VL	VL	Mazmoura	VL	VL	VL
Mazraat El Chouf	L	L	L	Mazraat El Daher	L	L	L	Mazraat El-Douair	VL	VL	VL
Mechref	L	L	L	Mghairie	VL	VL	VL	Mghayrie El-Chouf	L	L	L
Moukhtara	L	L	L	Mrusti	L	L	L	Mtolle	VL	VL	VL
Naameh	M	M	M	Niha El-Chouf	L	L	L	Ouadi Abou Youssef	L	L	L
Ouadi Ed-Deir	VL	VL	VL	Ouadi El-Sit	VL	VL	VL	Ouadi bnehlay	VL	VL	VL
Qraibeh	L	L	L	Qreiaa	VL	VL	VL	Rmayle El-Chouf	M	M	M
Semqaniyeh	L	L	L	Sibline	L	L	L	Sirjbeil	VL	VL	VL
Warhanieh	VL	VL	VL	Werdaniyeh	L	L	L	Zaarourieh	VL	VL	VL

Baabda

Municipality	20-Feb	21-Feb	22-Feb	Municipality	20-Feb	21-Feb	22-Feb	Municipality	20-Feb	21-Feb	22-Feb
Abadiyeh	L	L	L	Ain Mouaffaq	VL	VL	VL	Araiya	ML	ML	ML
Arbaniyeh	L	L	L	Arsoun	VL	VL	VL	Baabda	M	M	M
Baalchmey	VL	VL	VL	Bmaryam	VL	VL	VL	Bourj El-Brajneh	M	M	M
Boutchay	M	M	M	Bsaba Baabda	M	M	M	Btekhney	VL	VL	VL
Btibyat	VL	VL	VL	Bzebdine	VL	VL	VL	Chbeniyeh	VL	VL	VL
Chiyah	M	M	M	Chmeisset Baabda	VL	VL	VL	Chouit	ML	ML	ML
Deir El-harf	VL	VL	VL	Deir Khouna	VL	VL	VL	Dlaybeh	L	L	L

Falougha	VL	VL	VL	Furn El-Chebbak	M	M	M	Hadath Beyrouth	M	M	M
Halaliyeh Baabda	L	L	L	Hammana	VL	VL	VL	Haret El Sett	M	M	M
Haret Hamze	VL	VL	VL	Haret Hreik	M	M	M	Hasbaiya El-Metn	VL	VL	VL
Jouar El-Hoz	VL	VL	VL	Jouret Arsoun	VL	VL	VL	Kfar Chima	M	M	M
Kfar Selouane	VL	VL	VL	Khalouat Baabda	VL	VL	VL	Kneisset Baabda	L	L	L
Laylakeh	M	M	M	Louayzeh Baabda	M	M	M	Merdache	M	M	M
Mzairaa Baabda	VL	VL	VL	Ouadi Chahrour El Ol	M	M	M	Ouadi Chahrour El So	M	M	M
Qalaa Baabda	VL	VL	VL	Qhraybe Baabda	VL	VL	VL	Qobbayaa	VL	VL	VL
Qornayel	VL	VL	VL	Qortada	L	L	L	Qrayeh Baabda	VL	VL	VL
Qsaibeh Baabda	L	L	L	Qtale Baabda	VL	VL	VL	Ras El Metn	L	L	L
Ras El-Haref	VL	VL	VL	Rouayset El-Ballout	VL	VL	VL	Salima Baabda	L	L	L
Tahouitat El Ghadir	M	M	M	Tarchich	VL	VL	VL	Zandouqa	L	L	L

Aley

Municipality	20-Feb	21-Feb	22-Feb	Municipality	20-Feb	21-Feb	22-Feb	Municipality	20-Feb	21-Feb	22-Feb
Abey	L	L	L	Aghmid	VL	VL	VL	Ain Dara	VL	VL	VL
Ain Drafil	L	L	L	Ain El Halazoun	VL	VL	VL	Ain El-Rmmaneh	VL	VL	VL
Ain Jedideh	VL	VL	VL	Ain Ksour	VL	VL	VL	Ain Onoub	ML	ML	ML
Ain Traz	L	L	L	Ainab	VL	VL	VL	Aley	L	L	L
Aramoun	ML	ML	ML	Aytat	ML	ML	ML	Azouniyeh	VL	VL	VL
Baawerta	ML	ML	ML	Badghan Oua Wadi Bad	VL	VL	VL	Bassatine	L	L	L
Bayssour	L	L	L	Bchamoun	ML	ML	ML	Bdadoun	ML	ML	ML
Behouara	L	L	L	Bennay	L	L	L	Bhamdoun El-Dayaa	VL	VL	VL
Bhamdoun El-Mhatta	VL	VL	VL	Bkhechtey	VL	VL	VL	Bleibel	M	M	M
Bmakine	ML	ML	ML	Bmehray	VL	VL	VL	Bouzrid	L	L	L
Bserrine	VL	VL	VL	Bsous	L	L	L	Btalloun	VL	VL	VL
Btater	VL	VL	VL	Chanay	VL	VL	VL	Charoun	VL	VL	VL
Chartoun	VL	VL	VL	Chemlane	VL	VL	VL	Choueifat El-Aamrous	M	M	M
Choueifat El-Oumara	M	M	M	Choueifat El-Quoubbe	M	M	M	Dakkoun	L	L	L
Deir Qoubel	M	M	M	Dfoun	ML	ML	ML	Douair El Remmaneh	VL	VL	VL
Ghaboun	L	L	L	Habramoun	VL	VL	VL	Homs Oua Hama	VL	VL	VL
Houmal	ML	ML	ML	Jisr El Qadi	ML	ML	ML	Kehaleh	ML	ML	ML
Keyfoun	L	L	L	Kfar Aamey	L	L	L	Kommatyeh	L	L	L
Maasrati	VL	VL	VL	Majdel Baana	VL	VL	VL	Mansourieh et Ain El	VL	VL	VL
Mazraat El-Nahr	VL	VL	VL	Mchakhte	VL	VL	VL	Mecherfeh	VL	VL	VL
Mejdlaya	L	L	L	Mrayjat	VL	VL	VL	Ramliyah	VL	VL	VL
Rechmaya	L	L	L	Rejmeh	VL	VL	VL	Remhala	L	L	L
Rouaysset El Neemane	VL	VL	VL	Saoufar	VL	VL	VL	Selfaya	L	L	L
Sirhmoul	L	L	L	Souq El Ghareb	ML	ML	ML	Taazanieh	VL	VL	VL

Kesrouane

Municipality	20-Feb	21-Feb	22-Feb	Municipality	20-Feb	21-Feb	22-Feb	Municipality	20-Feb	21-Feb	22-Feb
Achkout	VL	VL	VL	Adma Oua Dafneh	M	M	M	Ain Ed-Delbe Kesroua	VL	VL	VL
Ain El-Rihane	M	M	M	Aintoura Kesrouane	M	M	M	Ajaltoun	L	L	L
Akaybeh Kesrouane	M	M	M	Aramoun Kesrouane	L	L	L	Azra ouel Ozor	VL	VL	VL
Ballouneh	ML	ML	ML	Batha	L	L	L	Bekaatat Achkout	VL	VL	VL
Bekaatat Kanaan	VL	VL	VL	Bizhel	M	M	M	Bouar	M	M	M
Bqaatouta	VL	VL	VL	Bqaq Ed-Dine	M	M	M	Bzommar	VL	VL	VL

Chahtoul	VL	VL	VL	Chnaniir	M	M	M	Chouan	VL	VL	VL
Daraya Kesrouane	L	L	L	Darououn	ML	ML	ML	Deir Baqlouch	L	L	L
Dlebta	L	L	L	Eghbeh	VL	VL	VL	Faraya	VL	VL	VL
Fatka	M	M	M	Feytroun	VL	VL	VL	Ghazir	M	M	M
Ghbaleh Kesrouane	VL	VL	VL	Ghedrass	L	L	L	Ghosta	L	L	L
Ghynéh	VL	VL	VL	Harharaya w Kattine	L	L	L	Harissa Kesrouane	M	M	M
Hayata	VL	VL	VL	Hosein	L	L	L	Hrajel	VL	VL	VL
Jdeideh Ghazir	L	L	L	Jeita	M	M	M	Jounieh Ghadir	M	M	M
Jounieh Haret Sakhr	M	M	M	Jounieh Salel Alma	M	M	M	Jounieh Sarba	M	M	M
Jouret Bedrane	VL	VL	VL	Jouret Mhad	VL	VL	VL	Jouret Termos	VL	VL	VL
Kfar Debiane	VL	VL	VL	Kfar Tay Kesrouane	VL	VL	VL	Kfar Yassine	M	M	M
Kfour Kesrouane	L	L	L	Kharayeb Nahr Ibrahi	ML	ML	ML	Klayaat Kesrouane	VL	VL	VL
Maarab	L	L	L	Maaysra Kesrouane	ML	ML	ML	Mayrouba	VL	VL	VL
Mazraat Er-Ras	M	M	M	Mazraat Mrah El-Mir	VL	VL	VL	Mchaa El Ftouh	VL	VL	VL
Mchaa Faraya	VL	VL	VL	Mchaa Kfar Dibiane	VL	VL	VL	Mghaer	VL	VL	VL
Mradiyeh	L	L	L	Nahr Ed-Dahab	VL	VL	VL	Nammoura Kesrouane	ML	ML	ML
Ouata El Jaouz	VL	VL	VL	Ouata Sillam	M	M	M	Raachine	VL	VL	VL
Rayfoun	VL	VL	VL	Safra Kesrouane	M	M	M	Shayle Kesrouane	L	L	L
Tabarja	M	M	M	Yahchouch	L	L	L	Zaaytneh	L	L	L
Zeytoun	L	L	L	Zouk Mikael	M	M	M	Zouk Mosbeh	M	M	M

Baalbek_Hermel

Baalbek

Municipality	20-Feb	21-Feb	22-Feb	Municipality	20-Feb	21-Feb	22-Feb	Municipality	20-Feb	21-Feb	22-Feb
Aadous	VL	VL	VL	Aamchki	VL	VL	VL	Aarsal	VL	VL	VL
Ain Baalbek	VL	VL	VL	Ain Bourday	L	L	L	Ain El-Benye	L	L	L
Ain El-Jaouz Baalbek	VL	VL	VL	Ain El-Siya Chadoura	VL	VL	VL	Al Khodr Baalbek	VL	VL	VL
Al Nabi Chit	VL	VL	VL	Aynata Baalbek	L	L	L	Baalbek	VL	VL	VL
Bachwat	L	L	L	Barqa	L	L	L	Bednayeil Baalbak	L	L	L
Beit Chama	VL	VL	VL	Bijjaje	VL	VL	VL	Bouday	L	L	L
Brital	L	L	L	Btadi	L	L	L	Chaat	VL	VL	VL
Chaibe	L	L	L	Chlifa	L	L	L	Chmestar	L	L	L
Dar El-Oussa	L	L	L	Deir El-Ahmar	L	L	L	Deir Mar Maroun Baal	L	L	L
Douris	L	L	L	Fakiha	VL	VL	VL	Hadath Baalbek	VL	VL	VL
Ham	L	L	L	Haour Taala	L	L	L	Hizzine	VL	VL	VL
Hlebta	VL	VL	VL	Hosh Barada	VL	VL	VL	Hosh El Dahab	L	L	L
Hosh El Snid	VL	VL	VL	Hosh El-Nabi	VL	VL	VL	Hosh El-Rafiq	VL	VL	VL
Hosh Tal Safiya	VL	VL	VL	Hrebta	VL	VL	VL	laat	L	L	L
Jebaa	VL	VL	VL	Jenta	VL	VL	VL	Kfar Dabach	VL	VL	VL
Kfar Dane	VL	VL	VL	Khraibeh El-Hermel	L	L	L	Khreibet Baalbek	L	L	L
Kneisset Baalbek	L	L	L	Labueh	VL	VL	VL	Maarboun	L	L	L
Majdaloun	VL	VL	VL	Maqneh	VL	VL	VL	Mazraat Beit Mcheik	VL	VL	VL
Misraya	VL	VL	VL	Mograq	VL	VL	VL	Nabha El-Damdoum	L	L	L
Nabi Chbay	VL	VL	VL	Nabi Osman	VL	VL	VL	Nahleh baalbek	VL	VL	VL
Ouadi El-Oss	VL	VL	VL	Qaa Baayoun	VL	VL	VL	Qaa Jouar Maqiye	VL	VL	VL
Qaa Ouadi El-Khanzir	L	L	L	Qah Baalbek	VL	VL	VL	Qarha Baalbek	VL	VL	VL

Qsarnaba	VL	VL	VL	Ram Baalbek	L	L	L	Ras Baalbek El Sahl	VL	VL	VL
Ras Baalbek El-Charq	VL	VL	VL	Riha	VL	VL	VL	Saaide	VL	VL	VL
Sboubba	VL	VL	VL	Seriine El-Tahta	VL	VL	VL	Slouqi	L	L	L
Taiba Baalbek	VL	VL	VL	Talia	VL	VL	VL	Taraiya	L	L	L
Temnin El Fawqa	VL	VL	VL	Temnin El-Tahta	VL	VL	VL	Tfail	VL	VL	VL
Yahfoufa	VL	VL	VL	Yammouneh	L	L	L	Younine	VL	VL	VL
Zboud	L	L	L								

Hermel

Municipality	20-Feb	21-Feb	22-Feb	Municipality	20-Feb	21-Feb	22-Feb	Municipality	20-Feb	21-Feb	22-Feb
Charbine El-Hermel	M	M	M	Hermel Jbab	ML	ML	ML	Hermel	M	M	M
Maaysra El-Hermel	VL	VL	VL	Michaa Mrajhine	M	M	M	Ouadi Faara	L	L	L
Ras Baalbek - Ouadi	L	L	L	Ras Baalbek El Gharb	L	L	L	Zighrine	ML	ML	ML

Akkar

Akkar

Municipality	20-Feb	21-Feb	22-Feb	Municipality	20-Feb	21-Feb	22-Feb	Municipality	20-Feb	21-Feb	22-Feb
Aain Tinta	M	M	M	Aaiyat	M	M	M	Aakkar El-Aatiqa	L	L	L
Aamar Akkar	M	M	M	Aamar El Baykat	M	M	M	Aamayer	L	L	L
Aamriyet Akkar	M	M	M	Aandqet	L	L	L	Aarmeh	ML	ML	ML
Aarqa	M	M	M	Aawaynat	M	M	M	Aayoun Akkar	M	M	M
Abboudiye	M	M	M	Ain El-Zeit	M	M	M	Ain Yaaqoub	L	L	L
Akroum	L	L	L	Aridet Cheikh Zennad	M	M	M	Baldeh w Mazraat Bal	M	M	M
Barcha	M	M	M	Bardeh	M	M	M	Bebnine	M	M	M
Beino	M	M	M	Beit Ayoub	VL	VL	VL	Beit El-Haouch	M	M	M
Beit Mellat	M	M	M	Beit Younes	VL	VL	VL	Berbara Akkar	M	M	M
Berqayel	M	M	M	Bezbina	L	L	L	Bireh Akkar	M	M	M
Borj	M	M	M	Bqerezla	M	M	M	Bzal	ML	ML	ML
Chane	L	L	L	Chaqdouf	M	M	M	Charbila	M	M	M
Cheikh Mohammad	M	M	M	Cheikh Taba Es-Sahl	M	M	M	Cheikh Taba	M	M	M
Cheikh Zennad	M	M	M	Cheikhlar	M	M	M	Chir Hmairine	M	M	M
Daghle	M	M	M	Dahr Laissine	M	M	M	Darine	M	M	M
Dawra	L	L	L	Dawsa w Baghdadi	M	M	M	Dayret Nahr El-Kabir	M	M	M
Deir Dalloum	M	M	M	Deir Jennine	M	M	M	Denbou	ML	ML	ML
Dibbabiyyeh	M	M	M	Douair Aadwiyeh	M	M	M	Fassikine	M	M	M
Fnaydek	L	L	L	Fraydes Akkar	M	M	M	Ghazayle	M	M	M
Habchit	L	L	L	Hakour	M	M	M	Halba	M	M	M
Haouchab	M	M	M	Hayssat	M	M	M	Haytla	M	M	M
Hayzouq	M	M	M	Hedd	M	M	M	Hmaira Akkar	M	M	M
Hmaiss Akkar	M	M	M	Hnaider	ML	L	L	Hokr Ed-Dahri	M	M	M
Hokr Etti	M	M	M	Hokr Jouret Srar	M	M	M	Houaich	ML	ML	ML
Hrar	L	L	L	Idbil	M	M	M	Ilal	M	M	M
Janine	M	M	M	Jdeidet El-Joumeh	M	M	M	Jdeidet El-Kaiteh	M	M	M
Jebayel	M	M	M	Kafr	ML	ML	ML	Kafr	M	M	M
Karm Asfour	M	M	M	Kfar Melki Akkar	M	M	M	Kfar Noun	ML	ML	ML
Kfarharra	M	M	M	Khalsa	M	M	M	Kharnoubet Akkar	M	M	M

Khirbet Daoud Aakkar	M	M	M	Khirbet El Remmane	M	M	M	Khirbet Shar	M	M	M
Khoreybet El-Jindi	M	M	M	Khreibet Aakkar	L	L	L	Kneisset Aakkar	M	M	M
Kneisset Hnaider	M	M	ML	Knisse	M	M	M	Kroum El-Aarab	M	M	M
Kwachra	M	M	M	Kweykhat	M	M	M	Machta Hammoud	ML	ML	ML
Majdala	M	M	M	Majdel Akkar	M	M	M	Mar Touma	M	M	M
Marlaya Melhem	M	M	M	Mashha	M	M	M	Massoudiye	M	M	M
Mazraat Beit Ghattas	M	M	M	Mazraat En-Nahriye	M	M	M	Mechmech	L	L	L
Memneh	L	L	L	Mhammara	M	M	M	Mighraq Aakkar	M	M	M
Minyara	M	M	M	Moqayteh	M	M	M	Mounjez	M	M	M
Msalla	M	M	M	Mzeihmeh	M	M	M	Nfaiseh	M	M	M
Noura Et-Tahta	M	M	M	Ouadi El-Haour	M	M	M	Ouadi El-Jamous	M	M	M
Ouyoun El-Ghizlane	M	M	M	Qaabarine	M	M	M	Qabaait	L	L	L
Qachlaq	M	M	M	Qantara Aakkar	M	M	M	Qarha Aakkar	L	L	L
Qarqaf	M	M	M	Qboula	M	M	M	Qleiaat Aakkar	M	M	M
Qloud El-Baqie	M	M	M	Qobaiyat Aakkar	L	L	L	Qobbat Chamrat	M	M	M
Qorayat	L	L	L	Qornet Aakkar	VL	VL	VL	Qsair Aakkar	M	M	M
Rahbe	ML	ML	ML	Rihaniyet Aakkar	M	M	M	Rmah	M	M	M
Rmoul	M	M	M	Saadine	M	M	M	Sadaqa	VL	VL	VL
Saidnaya	M	M	M	Sammouniye	M	M	M	Sayssouq	M	M	M
Semmaqiye	M	M	M	Semmaqli	M	M	M	Sfinet El-Dreib	M	M	M
Sfinet El-Qaitaa	ML	ML	ML	Sindyanet Zeidane	M	ML	ML	Souaisset Aakkar	M	M	M
Srar	M	M	M	Tal Abbas El Gharby	M	M	M	Tal Abbas El-Charqy	M	M	M
Tal Biret	M	M	M	Tal Hmayra	M	M	M	Tal Maayan Tal Kiri	M	M	M
Tal Sibel	M	M	M	Tallet Chattaha	M	M	M	Tikrit	ML	ML	ML
Tleil	M	M	M	Tshea	VL	VL	VL	Zawarib	M	M	M
Zouq El Hosniyeh	M	M	M	Zouq El-Haddara	M	M	M	Zouq El-Hbalsa	M	M	M
Zouq El-Moqachrine	M	M	M								

Sud

Sour

Municipality	20-Feb	21-Feb	22-Feb	Municipality	20-Feb	21-Feb	22-Feb	Municipality	20-Feb	21-Feb	22-Feb
Aaiyeh	VL	VL	VL	Aalma El-Chaab	VL	VL	VL	Aaytit	VL	VL	VL
Abbassiyeeh Sour	L	L	L	Abou Chech	VL	VL	VL	Ain Abou Abdallah	L	L	L
Ain Baal	VL	VL	VL	Arzoun	VL	VL	VL	Aziyeh	VL	VL	VL
Baflaya	VL	VL	VL	Barich	VL	VL	VL	Batouliyeh	VL	VL	VL
Bayad	VL	VL	VL	Bazouriyeh	VL	VL	VL	Bediass	ML	ML	ML
Bestiyat	L	L	L	Borj El Chemali	VL	VL	VL	Borj En-Naqoura	VL	VL	VL
Borj Rahhal	L	L	L	Boustane	VL	VL	VL	Btaychiyeh	VL	VL	VL
Chaaitiye	VL	VL	VL	Chameh	VL	VL	VL	Chehabiye	VL	VL	VL
Chehour	L	L	L	Chihine	VL	VL	VL	Debaal Sour	VL	VL	VL
Deir Amess	VL	VL	VL	Deir Kifa	VL	VL	VL	Deir Qanoun El-Ain	VL	VL	VL
Deir Qanoun El-Naher	L	L	L	Derdghaiya	L	L	L	Dhayra	VL	VL	VL
Halloussiyeh	ML	ML	ML	Hamoul	VL	VL	VL	Hanaouey	VL	VL	VL
Henniye	VL	VL	VL	Hmairi Sour	L	L	L	Iskandarouna Sour	VL	VL	VL
Jbal El Botom	VL	VL	VL	Jebbin	VL	VL	VL	Jennata	L	L	L
Jijim	VL	VL	VL	Jouaiya	VL	VL	VL	Kneisset Sour	VL	VL	VL

Maarake	L	L	L	Maaroub	L	L	L	Majadel	VL	VL	VL
Majdalzoun	VL	VL	VL	Mansouri Sour	VL	VL	VL	Marnba	L	L	L
Marouahine	VL	VL	VL	Mazraat El-Zalloutiy	VL	VL	VL	Mazraat Mechref	VL	VL	VL
Mazraat Tayr Semhat	L	L	L	Mheilib	VL	VL	VL	Neffakhiyeh	VL	VL	VL
Niha Sour	VL	VL	VL	Ouadi Jilo	VL	VL	VL	Qana	VL	VL	VL
Qolaileh Sour	VL	VL	VL	Rechknayan	VL	VL	VL	Rmadiyah	VL	VL	VL
Selha Sour	VL	VL	VL	Siddiqine	VL	VL	VL	Sour	VL	VL	VL
Srifa	L	L	L	Tayr Debbe	VL	VL	VL	Tayr Felsay	ML	ML	ML
Tayr Harfa	VL	VL	VL	Touayri	VL	VL	VL	Toura	L	L	L
Yanouh Sour	VL	VL	VL	Yarine	VL	VL	VL	Zebqine	VL	VL	VL

Saida

Municipality	20-Feb	21-Feb	22-Feb	Municipality	20-Feb	21-Feb	22-Feb	Municipality	20-Feb	21-Feb	22-Feb
Aanqoun	M	M	M	Aaqtanit	M	M	M	Aarab Ej-Jall	M	M	M
Aarab Tabbaya	M	M	M	Abra Saida	M	M	M	Adloun	M	M	M
Adousiyeh	M	M	M	Ain-El-Deleb	M	M	M	Arzai	L	L	L
Babliyah	M	M	M	Barty	M	M	M	Bissariyeh	M	M	M
Bnaafoul	M	M	M	Bqosta	M	M	M	Bramiy	M	M	M
Daoudiyeh	M	M	M	Dareb El-Sim	M	M	M	Erkay	M	M	M
Ghassanieh	M	M	M	Ghazieh	M	M	M	Hajjeh	M	M	M
Haret Saida	M	M	M	Hartiyeh	M	M	M	Hlaliye Saida	M	M	M
Insariyat	M	M	M	Jazira Saida	L	L	L	Kafar Bit	M	M	M
Kaoutariyet El-Siyad	M	M	M	Kfar Chellal	M	M	M	Kfar Hatta Saida	M	M	M
Kfar Milke Saida	M	M	M	Khartoum	M	M	M	Khaziz	M	M	M
Khirbet Ed-Douair Sa	M	M	M	Khirbet El-Bassal	M	M	M	Khrayeb Saida	ML	ML	ML
Loubieh	M	M	M	Maghdouche	M	M	M	Majdelyoun	M	M	M
Matariyet El-Choumar	L	L	L	Matayriyeh	M	M	M	Mazraat 'Mseileh	M	M	M
Mazraat 'Snaiber	M	M	M	Mazraat Aarab Soukka	M	M	M	Mazraat Deir Taqla	M	M	M
Mazraat El Yahoudiye	ML	ML	ML	Mazraat El-Housseini	M	M	M	Mazraat El-Mhaydaleh	ML	ML	ML
Mazraat El-Ouasta	M	M	M	Mazraat Jamjim	ML	ML	ML	Mazraat Kaoutariyet	M	M	M
Mazraat Kfar Badda	M	M	M	Mazraat Oussamiyat	M	M	M	Mazraat Sari	M	M	M
Mazraat Sinai	M	M	M	Meemariyeh	M	M	M	Merouaniyeh	M	M	M
Miyeh ou Miyeh	M	M	M	Najjariyeh	M	M	M	Qaaqaiyat El-Snaouba	M	M	M
Qnarit	M	M	M	Qraiye Saida	M	M	M	Saida Ed-Dekermane	M	M	M
Saida El-Oustani	M	M	M	Saida El-Qadimeh	M	M	M	Saida Kefraya	M	M	M
Saksakiyeh	M	M	M	Salhigh Saida	M	M	M	Sarafand	M	M	M
Sfenta	ML	ML	ML	Tafahta	M	M	M	Tanbourit	M	M	M
Tebna	M	M	M	Zaghdraiya	M	M	M	Zeita	M	M	M
Zrariyeh	M	M	M								

Jezzine

Municipality	20-Feb	21-Feb	22-Feb	Municipality	20-Feb	21-Feb	22-Feb	Municipality	20-Feb	21-Feb	22-Feb
Ain El-Mir (El Estab	M	M	M	Anane	L	L	L	Aramta	ML	ML	ML
Ariya	L	L	L	Aychiyeh	L	L	L	Azour	L	L	L
Baba	L	L	L	Bayssour Jezzine	M	M	M	Benoueteh Jezzine	ML	ML	ML
Bhannine	L	L	L	Bisri	L	L	L	Bkassine	L	L	L
Bouslaya	L	L	L	Btedine El-Leqech	L	L	L	Chbail	L	L	L
Choualiq Jezzine	M	M	M	Dahr Ed-Deir	ML	ML	ML	Deir El Qattine	L	L	L

Demachqiyeh	L	L	L	Ghabbatiyeh	ML	ML	ML	Harf Jezzine	L	L	L
Hassaniyeh	M	M	M	Haytouleh	ML	ML	ML	Haytura	L	L	L
Hidab	ML	ML	ML	Homsiyeh	L	L	L	Jabal Toura	L	L	L
Jarmaq	ML	ML	ML	Jensnaya	M	M	M	Jernaya	M	M	M
Jezzine	M	M	M	Karkha	ML	ML	ML	Kfar Falous	M	M	M
Kfar Houna	ML	ML	ML	Kfar Jarrah	M	M	M	Lebaa	M	M	M
Louayzet Jezzine	L	L	L	Machmouche	L	L	L	Mahmoudiyeh Jezzine	L	L	L
Maknounye Jezzine	L	L	L	Maraat Ouazaiyeh	ML	ML	ML	Mazraat Daraya	ML	ML	ML
Mazraat El-Aarqoub	L	L	L	Mazraat El-Mathane	VL	VL	VL	Mazraat El-Rahbane	L	L	L
Mazraat Khallet Khaz	L	L	L	Mazraat Louzid (Loua	L	L	L	Mazraat Qrouh	ML	ML	ML
Mazraat Tamra	VL	VL	VL	Mazraat Zighrine Jez	L	L	L	Mazraat	L	L	L
Mharbiyeh	M	M	M	Midane Jezzine	L	L	L	Mjeydel Jezzine	M	M	M
Mlikh	L	L	L	Mrah El-Hbasse	M	M	M	Ouadi Baanqoudaine	M	M	M
Ouadi El-Laymoun	M	M	M	Ouardiyeh	VL	VL	VL	Qabaa Jezzine	L	L	L
Qatrani	ML	ML	ML	Qaytouleh	L	L	L	Qtaleh Jezzine	L	L	L
Rihane Jezzine	L	L	L	Rimat	L	L	L	Roum	L	L	L
Roummanet	L	L	L	Sabbah	L	L	L	Saydoun	ML	ML	ML
Sfaray	L	L	L	Snaya	L	L	L	Sojoud	L	L	L
Srayri	ML	ML	ML	Taaid	L	L	L	Wadi Jezzine	ML	ML	ML
Zhalta	L	L	L								

Bekaa

West Bekaa

Municipality	20-Feb	21-Feb	22-Feb	Municipality	20-Feb	21-Feb	22-Feb	Municipality	20-Feb	21-Feb	22-Feb
Aammiq BG	L	L	L	Ain El Tineh BG	L	L	L	Ain Zebdeh	ML	ML	ML
Ana	ML	ML	ML	Aytanit	ML	ML	ML	Baaloul BG	ML	ML	ML
Bab Mareh	ML	ML	ML	Chouberqiye Aammiq	L	L	L	Dakoue	VL	VL	VL
Deir Ain El-Jaouze	M	M	M	Deir Tahniche	ML	ML	ML	Ghaza	L	L	L
Harime El-Soughra	VL	VL	VL	Hoch Harimeh	VL	VL	VL	Jazira BG	VL	VL	VL
Jib Jennine	L	L	L	Kamed-El-Laouz	L	L	L	Kefraya BG	M	M	M
Khiara El Atika	VL	VL	VL	Khiara	VL	VL	VL	Khirbet Qanafar	M	M	M
Lala	M	M	M	Lebbaya BG	ML	ML	ML	Loussa	L	L	L
Machghara	L	L	L	Manara (Hammara) BG	VL	VL	VL	Mansoura BG	L	L	L
Marej BG	VL	VL	VL	Maydoun	L	L	L	Ouaqf BG	VL	VL	VL
Qaraaoun	L	L	L	Qelya	M	M	M	Raouda (Istabel)	VL	VL	VL
Saghbine	M	M	M	Sohmor	L	L	L	Soltan Yacoub el Ara	VL	VL	VL
Souairy	VL	VL	VL	Sultan Yaacoub	L	L	L	Tal Znoub	M	M	M
Yehmor BG	M	M	M	Zilaya	M	M	M				

Zahle

Municipality	20-Feb	21-Feb	22-Feb	Municipality	20-Feb	21-Feb	22-Feb	Municipality	20-Feb	21-Feb	22-Feb
Aanjar (Haouch Mouss	VL	VL	VL	Ablah	VL	VL	VL	Ain Kfarzabad	VL	VL	VL
Ali-El-Nahri	VL	VL	VL	Bar Elias	VL	VL	VL	Bouarej	ML	ML	ML
Cheberqiyet Tabet	VL	VL	VL	Chtaura	VL	VL	VL	Deir El Ghazal	VL	VL	VL
Delhamiyet Zahle	VL	VL	VL	Ferzol	VL	VL	VL	Haouch El-Ghanam	VL	VL	VL
Haouch Es-Siyadeh	L	L	L	Haouch Hala	VL	VL	VL	Haouch Mandara	VL	VL	VL

Haouch Qayssar	VL	VL	VL	Hezerta	VL	VL	VL	Hosh Moussa	VL	VL	VL
Jdita	VL	VL	VL	Kfarzabad	VL	VL	VL	Ksara	VL	VL	VL
Majdel Aanjar	VL	VL	VL	Makssi	L	L	L	Massa	VL	VL	VL
Mazraat Er-Remtaniye	L	L	L	Mrayjat Zahle	M	M	M	Mzaraa Zahle	L	L	L
Nabi Ayla	VL	VL	VL	Nasriyet Rizk	VL	VL	VL	Nasriyet Zahle	VL	VL	VL
Niha Zahle	VL	VL	VL	Ouadi Ed-Deloum	M	M	M	Ouadi El-Arayech	VL	VL	VL
Qaa El Rim	L	L	L	Qab Elias	L	L	L	Qousaya	VL	VL	VL
Rhit	VL	VL	VL	Riyak	VL	VL	VL	Saadnayel	VL	VL	VL
Taal El-Akhdar	VL	VL	VL	Taalbeya	VL	VL	VL	Taanayel	VL	VL	VL
Talamara	VL	VL	VL	Tcheflik Edde Haouch	VL	VL	VL	Tcheflik Qiqano	VL	VL	VL
Terbol Zahle	VL	VL	VL	Touaite Zahle	VL	VL	VL	Zahle Aradi	VL	VL	VL
Zahle El-Berbara	VL	VL	VL	Zahle El-Maallaqa	VL	VL	VL	Zahle El-Midane	VL	VL	VL
Zahle Er-Rassiye	VL	VL	VL	Zahle Haouch El-Ouma	VL	VL	VL	Zahle Haouch El-Ouma	VL	VL	VL
Zahle Haouch Ez-Zara	VL	VL	VL	Zahle Maalaqa Aradi	VL	VL	VL	Zahle Mar Antonios	VL	VL	VL
Zahle Mar Elias	VL	VL	VL	Zahle Mar Gerios	VL	VL	VL	Zahle Saydet En-Naja	VL	VL	VL
Zebdoul	VL	VL	VL								

Rachaiya

Municipality	20-Feb	21-Feb	22-Feb	Municipality	20-Feb	21-Feb	22-Feb	Municipality	20-Feb	21-Feb	22-Feb
Ain Arab Rachaiya	VL	VL	VL	Ain Ata	L	L	L	Ain Harche	L	L	L
Aqabe Rachaya	L	L	L	Ayha	L	L	L	Ayta El Fokhar	L	L	L
Bakifa Rachaya	L	L	L	Bakka	VL	VL	VL	Beit Lahya	L	L	L
Bireh Rachaiya	L	L	L	Daher El Ahmar	L	L	L	Deir El-Achayer	VL	VL	VL
Heloua Rachaiya	VL	VL	VL	Hoch El Qannabeh Rac	ML	ML	ML	Kaoukaba Bou Arab	L	L	L
Kfar Danis	L	L	L	Kfar Mechki	L	L	L	Kfar Qouq	L	L	L
Kherbet Rouha	L	L	L	Majdel Balhiss	L	L	L	Mdoukha	L	L	L
Mhaydseh Rachaiya	L	L	L	Nabi Safa	L	L	L	Rachaiya	L	L	L
Rafid Rachaiya	L	L	L	Selsata (Mazraat Dei	VL	VL	VL	Tannoura	L	L	L
Yanta	VL	VL	VL								

Beyrouth

Beyrouth

Municipality	20-Feb	21-Feb	22-Feb	Municipality	20-Feb	21-Feb	22-Feb	Municipality	20-Feb	21-Feb	22-Feb
Achrafieh	M	M	M	Ain el-Mreisse	ML	ML	ML	Bachoura	M	M	M
Beirut Central Distr	VL	VL	VL	Marfai	L	L	L	Mazraa	M	M	M
Medaouar	M	M	M	Minet el-Hosn	L	L	L	Mwssaitbeh	M	M	M
Ras Beirut	ML	ML	ML	Rmeil	M	M	M	Saifi	L	L	L
Zqaq el-Blat	L	L	L								