

Lebanon Fire Risk Bulletin



CIVIL DEDEFENCE

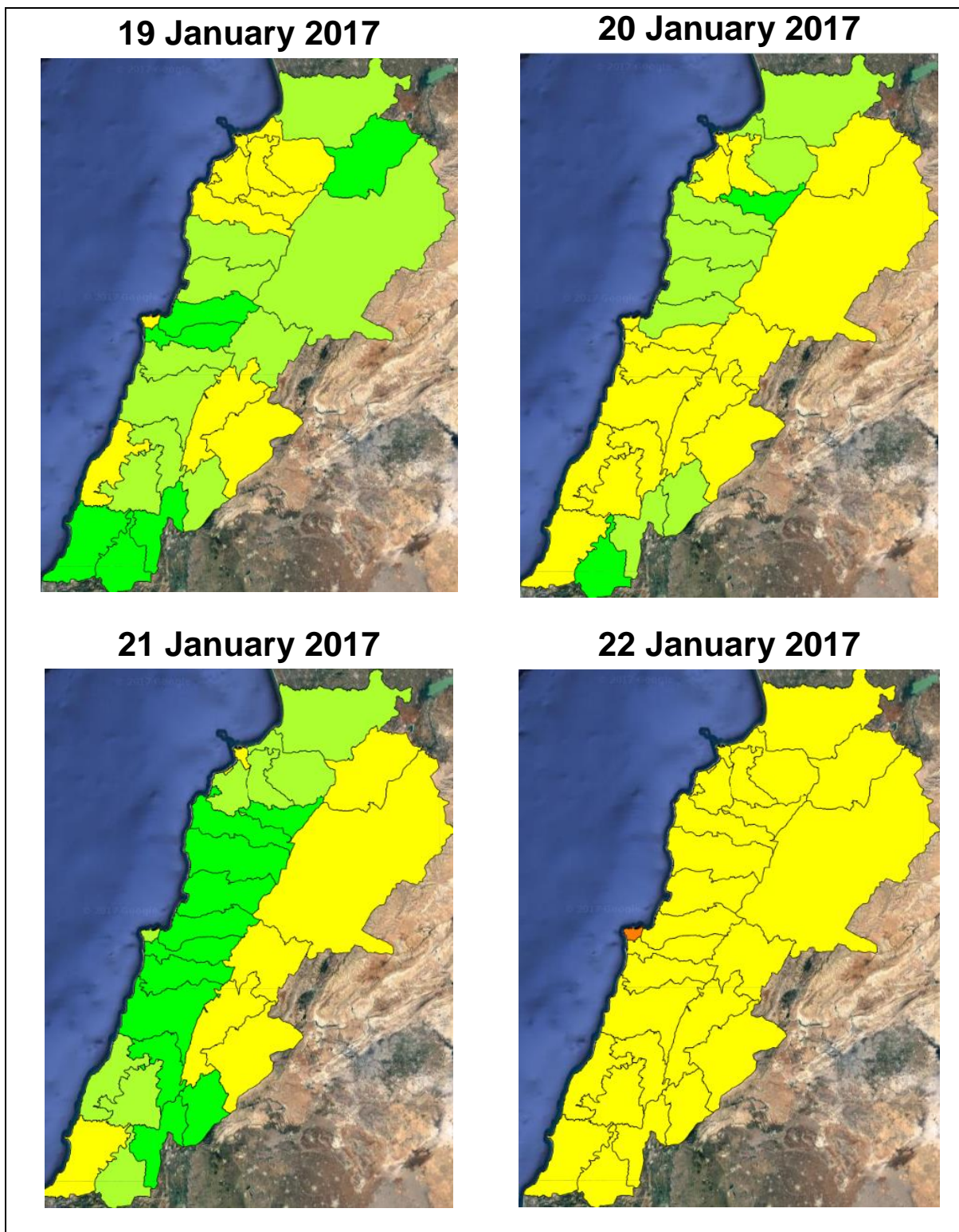
Refer to cadast condition.

General description of potential fire risk situation

Symbol	Level of risk	Meaning and actions
VL	Very low	Very low fire risk. Controlled burning operations can be hardly executed due to high fuel moisture content. Normally wildfires self-extinguish.
L	Low	Low fire risk. Controlled burning operations can be executed with a reasonable degree of safety.
ML	Medium low	Medium-low fire risk. Controlled burning operations can be executed in safety conditions. All the fires need to be extinguished.
M	Medium	Medium fire risk. Controlled burning operations would be avoided. All the fires need to be very well extinguished.
M	Medium high	Controlled burning is not recommended. Open flame will start fires. Cured grasslands and forest litter will burn readily. Spread is moderate in forests and fast in exposed areas. Patrolling and monitoring is suggested. Fight fires with direct attack and all available resources.
H	High	Ignition can occur easily with fast spread in grass, shrubs and forests. Fires will be very hot with crowning and short to medium spotting. Direct attack on the head may not be possible requiring indirect methods on flanks. Patrolling and monitoring the territory is highly suggested.
E	Extreme	Ignition can occur also from sparks. Fires will be extremely hot with fast rate of spread. Control may not be possible during day due to long range spotting and crowning. Suppression forces should limit efforts to limiting lateral spread. Damage potential total. Patrolling and monitoring the territory is highly suggested.

Beirut, 20 January 2017

FIRE RISK INDEX

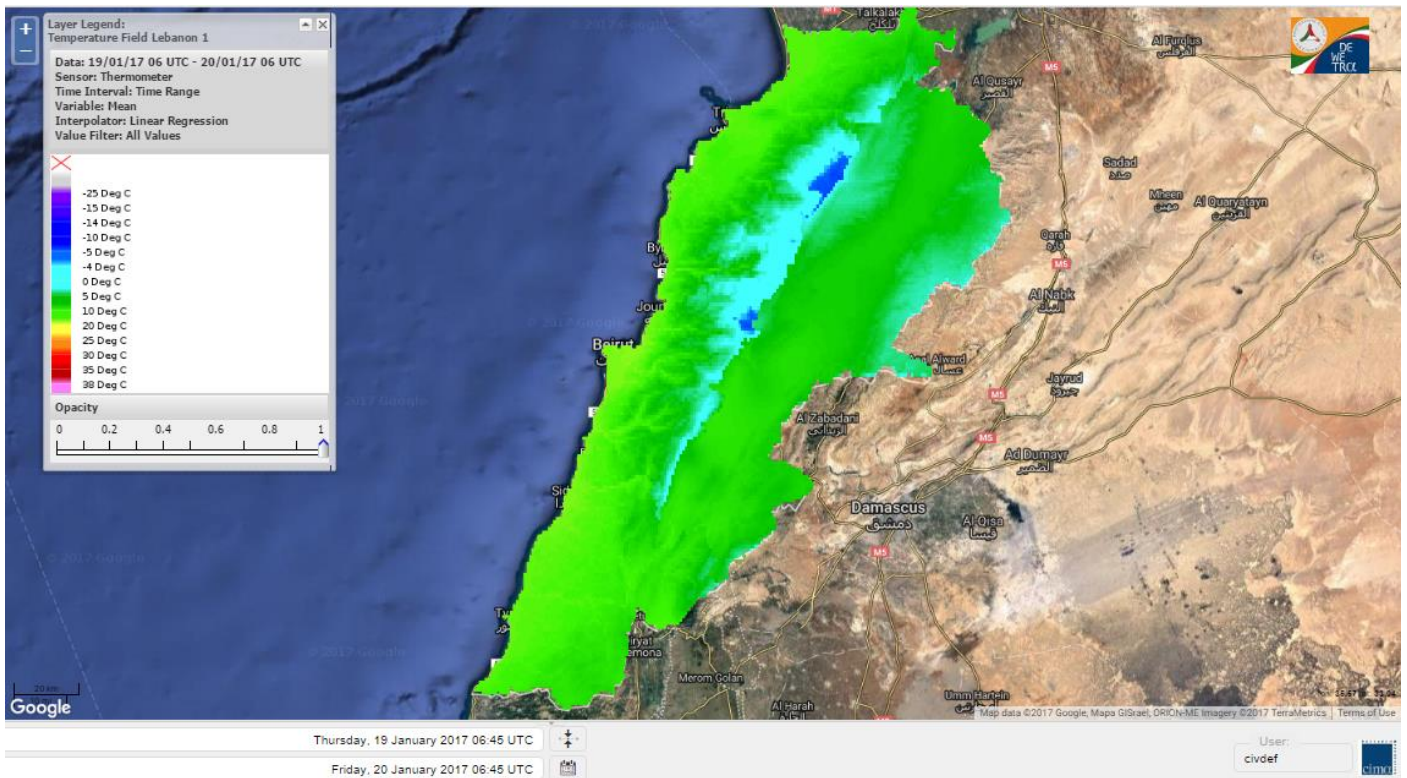


Layer Legend:
Lebanon Wildfire Risk Index 1

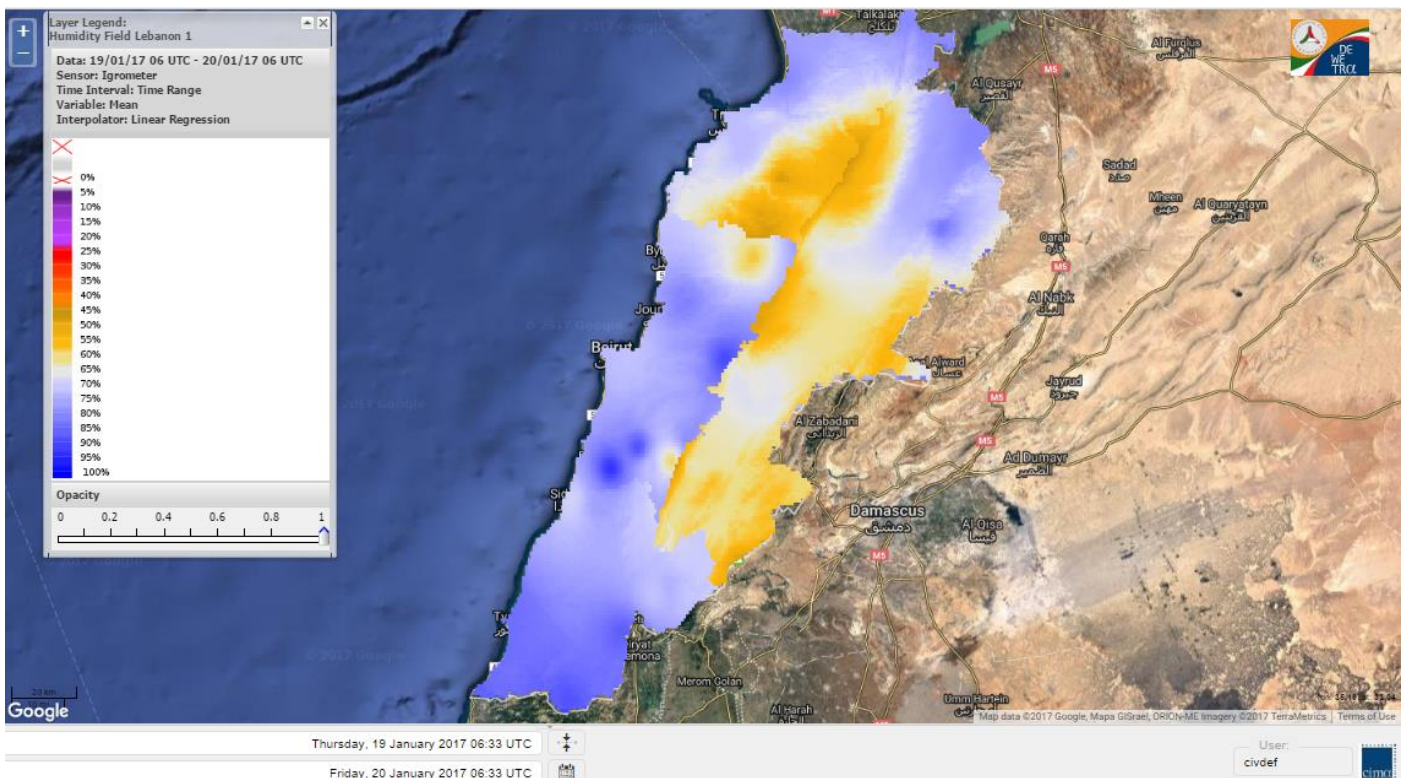
Data: Run: 20/01/2017 00:00. Forecast for 20
Model: RISICO for the Republic of Lebanon
Variable: Fire Weather Index
Spatial Resolution: Caza

- VERY LOW
- LOW
- MEDIUM-LOW
- MEDIUM
- MEDIUM-HIGH
- HIGH
- EXTREME

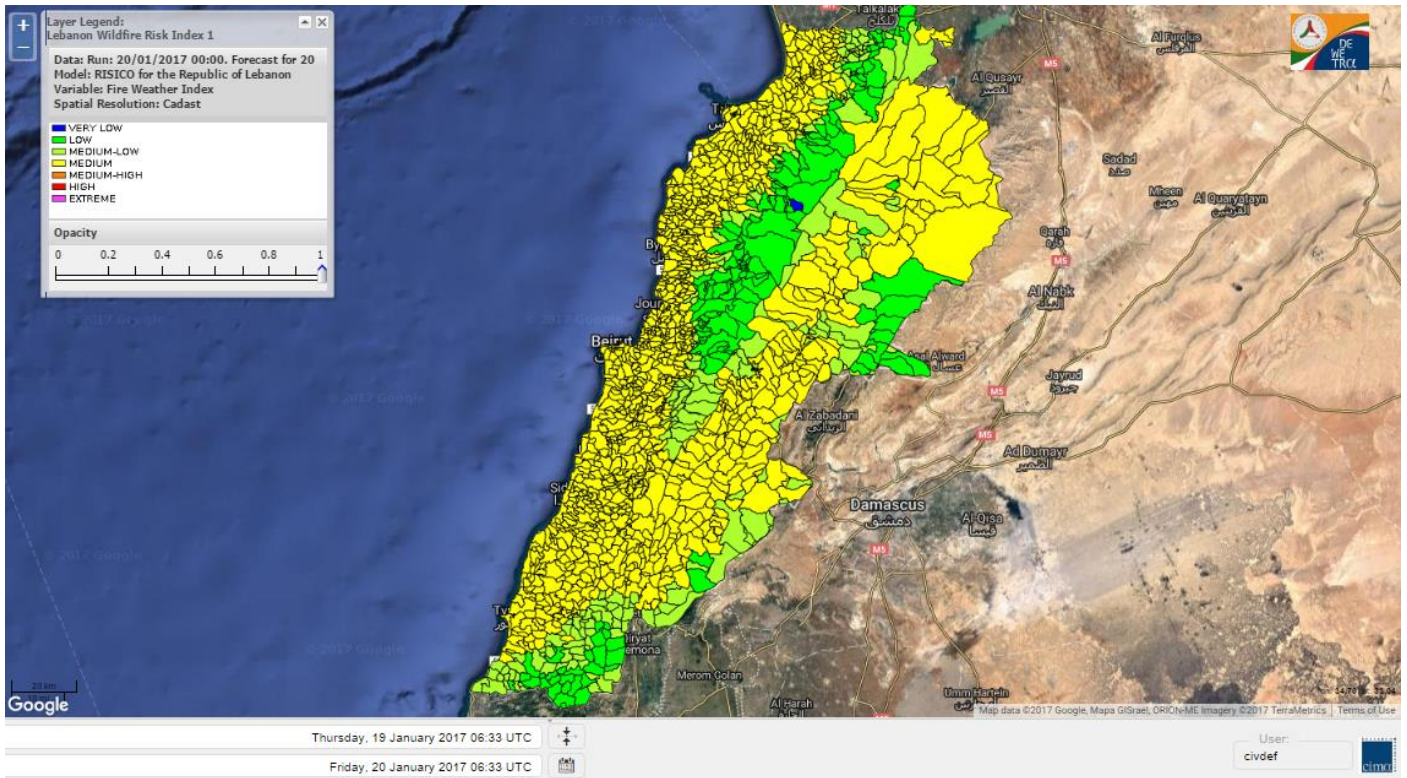
Lebanon temperature for 20 January 2017



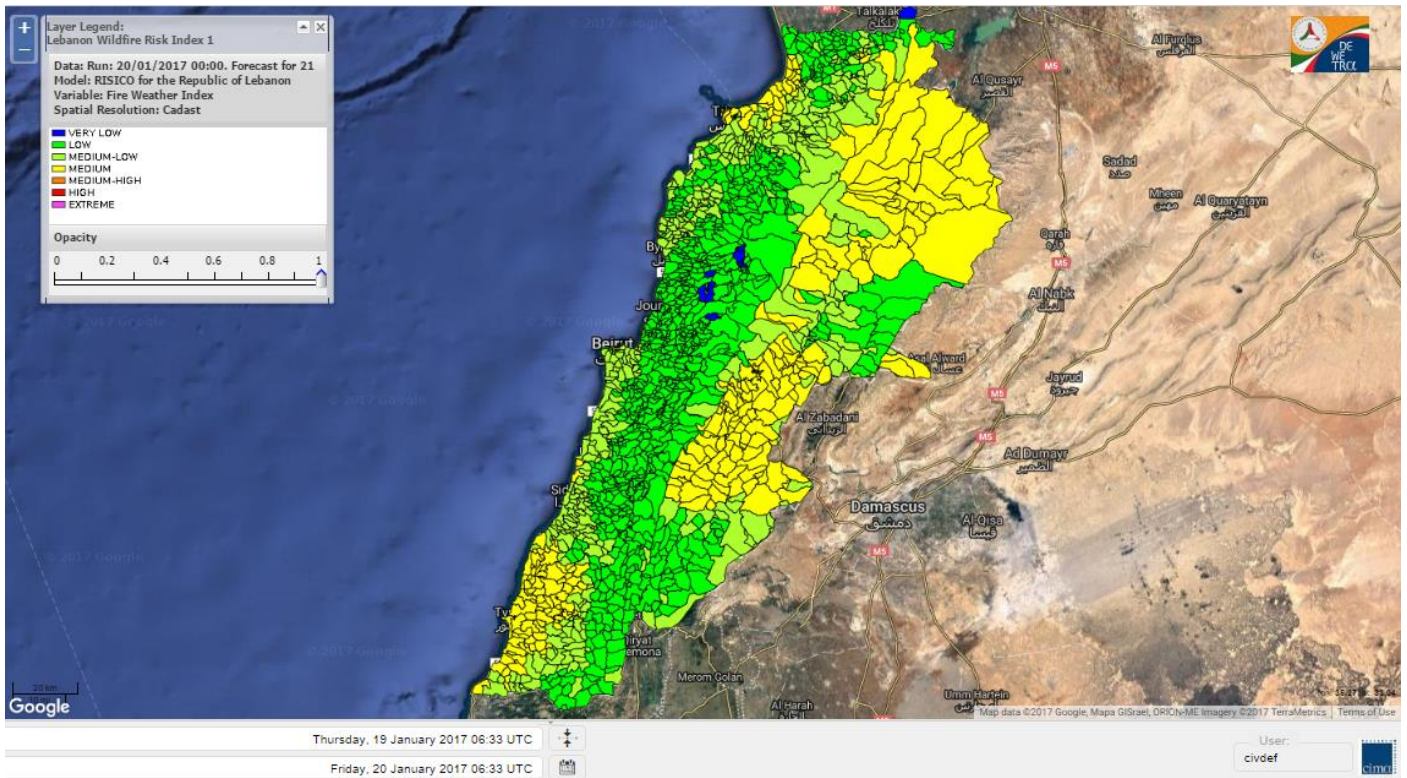
Lebanon humidity for 20 January 2017



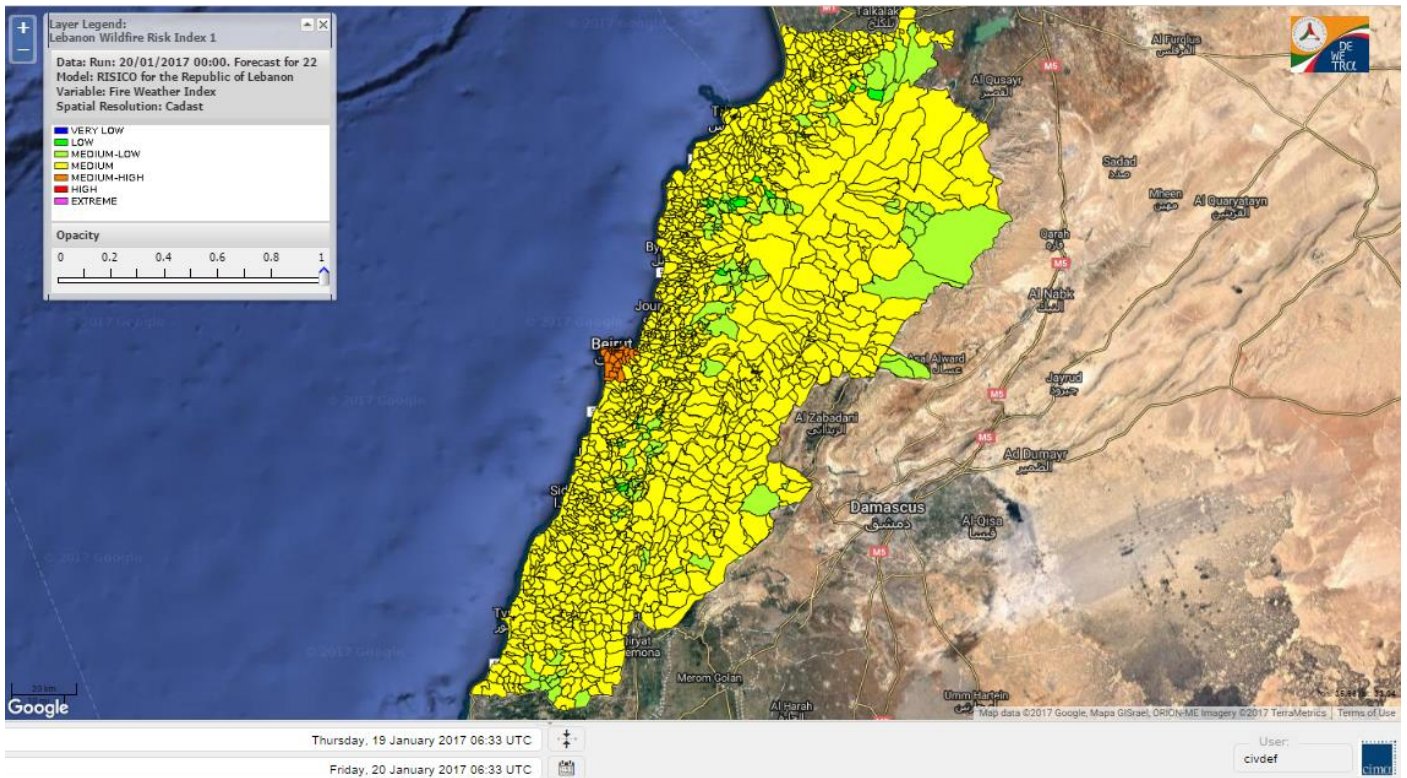
Lebanon for 20 January 2017



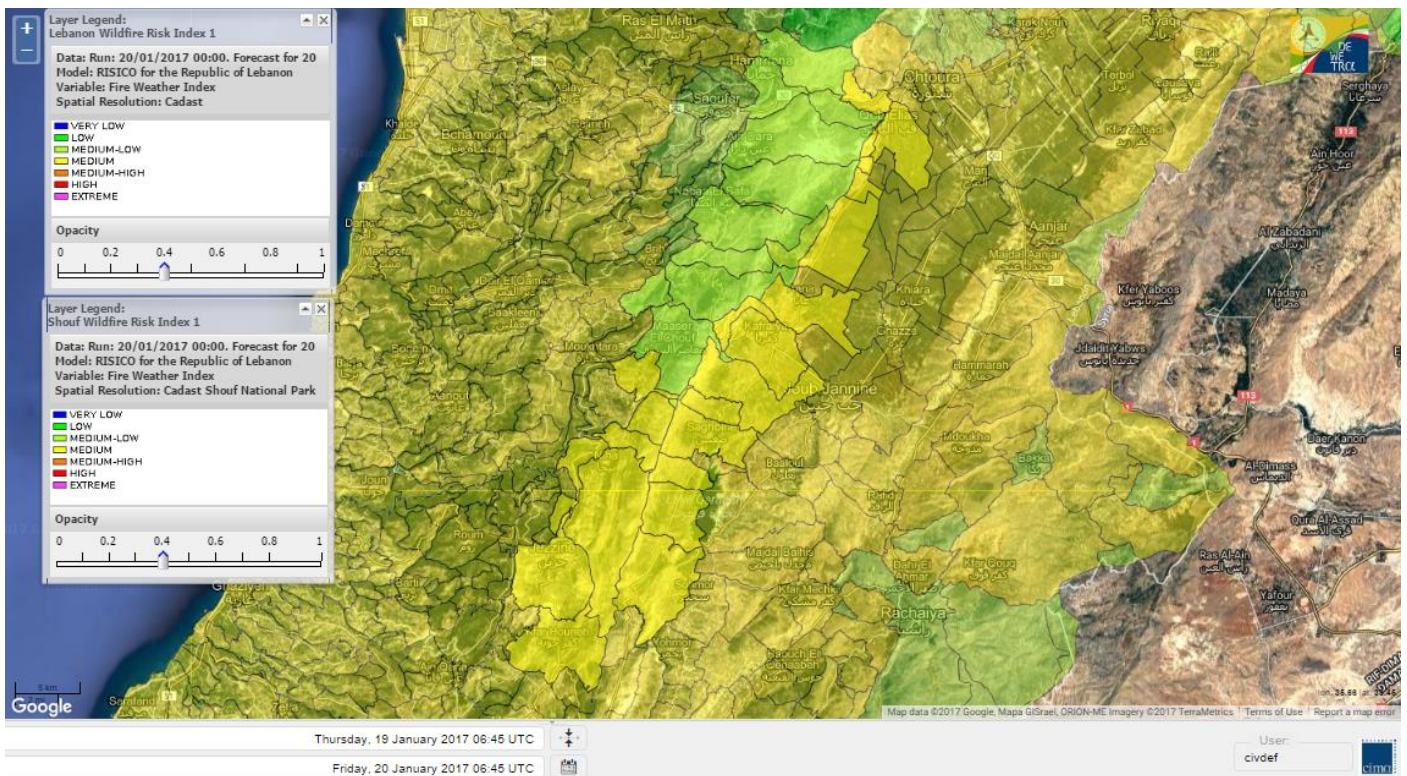
Lebanon for 21 January 2017



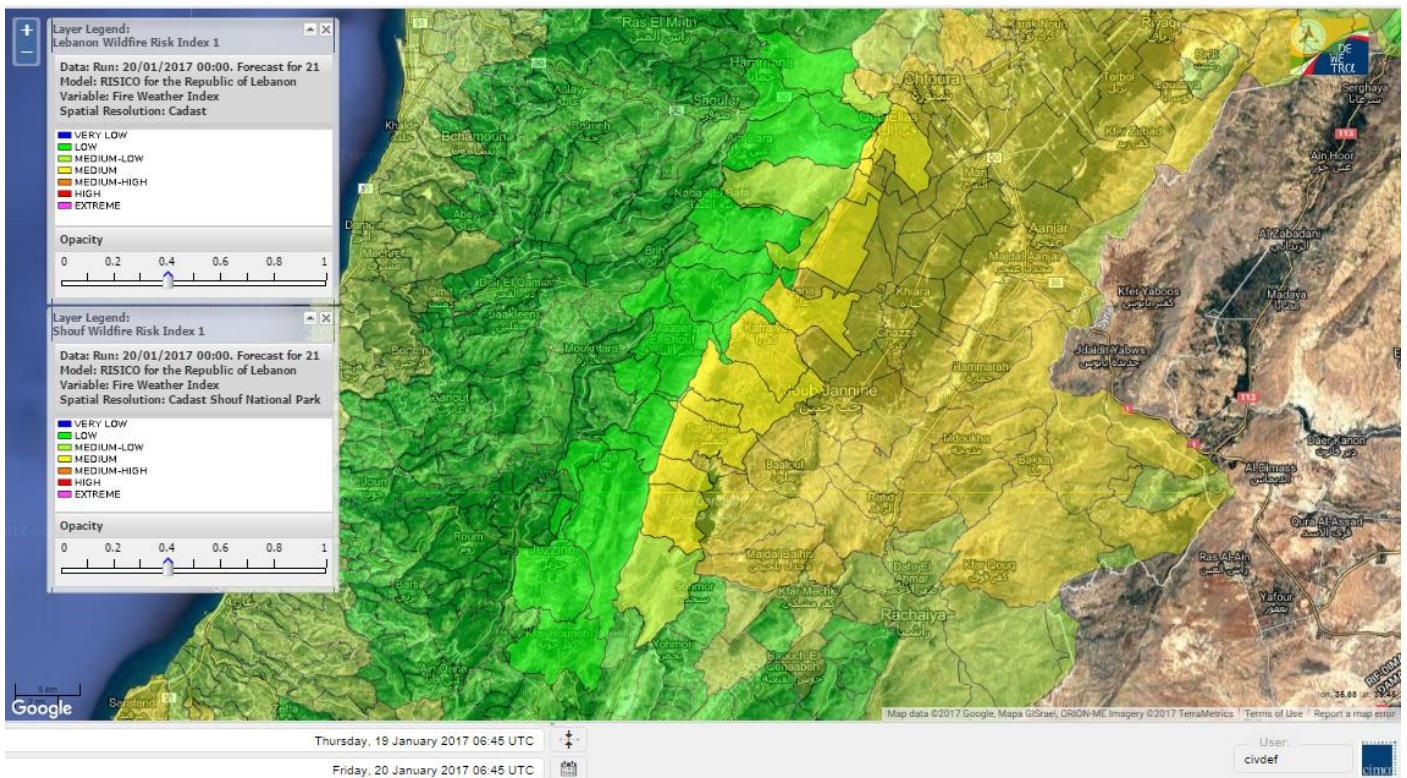
Lebanon for 22 January 2017



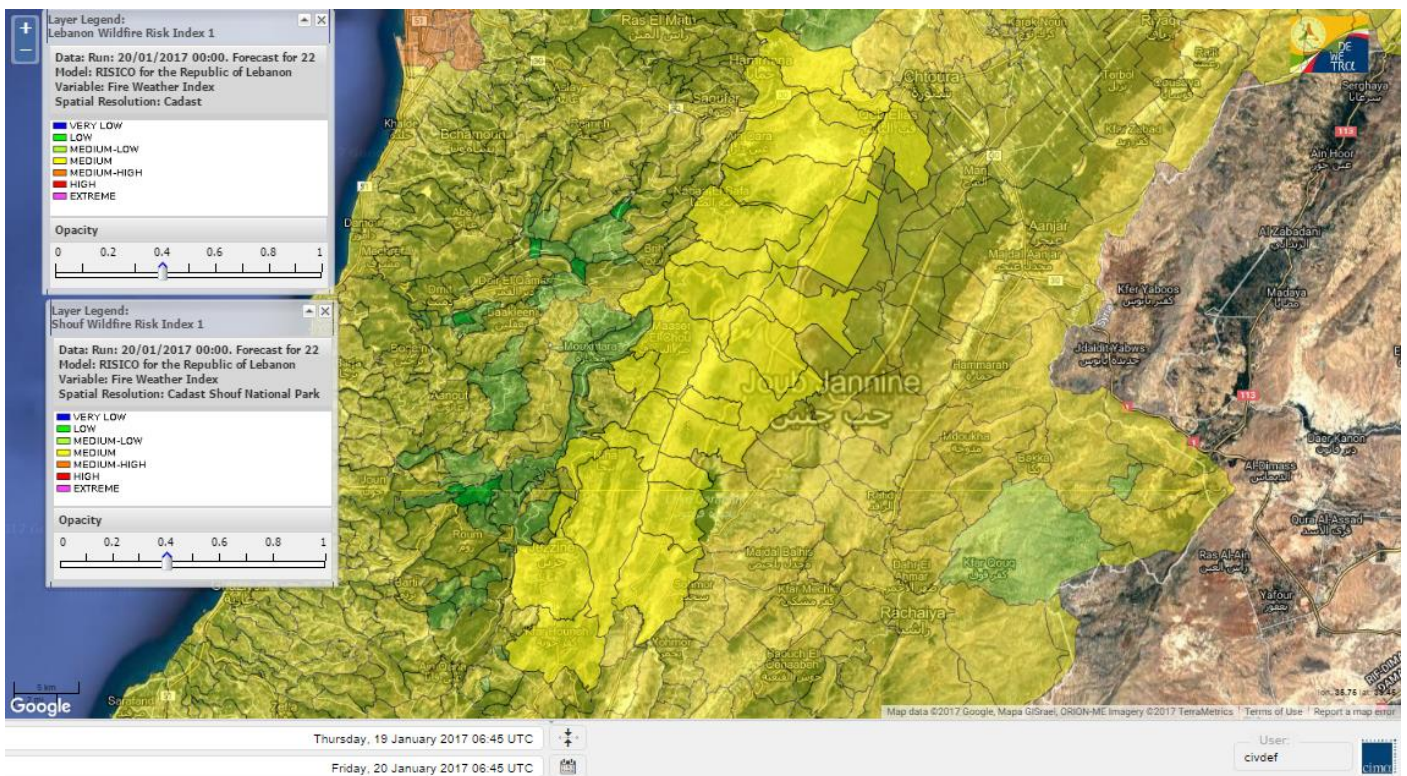
Shouf Biosphere Reserve Forecast for 20 January 2017



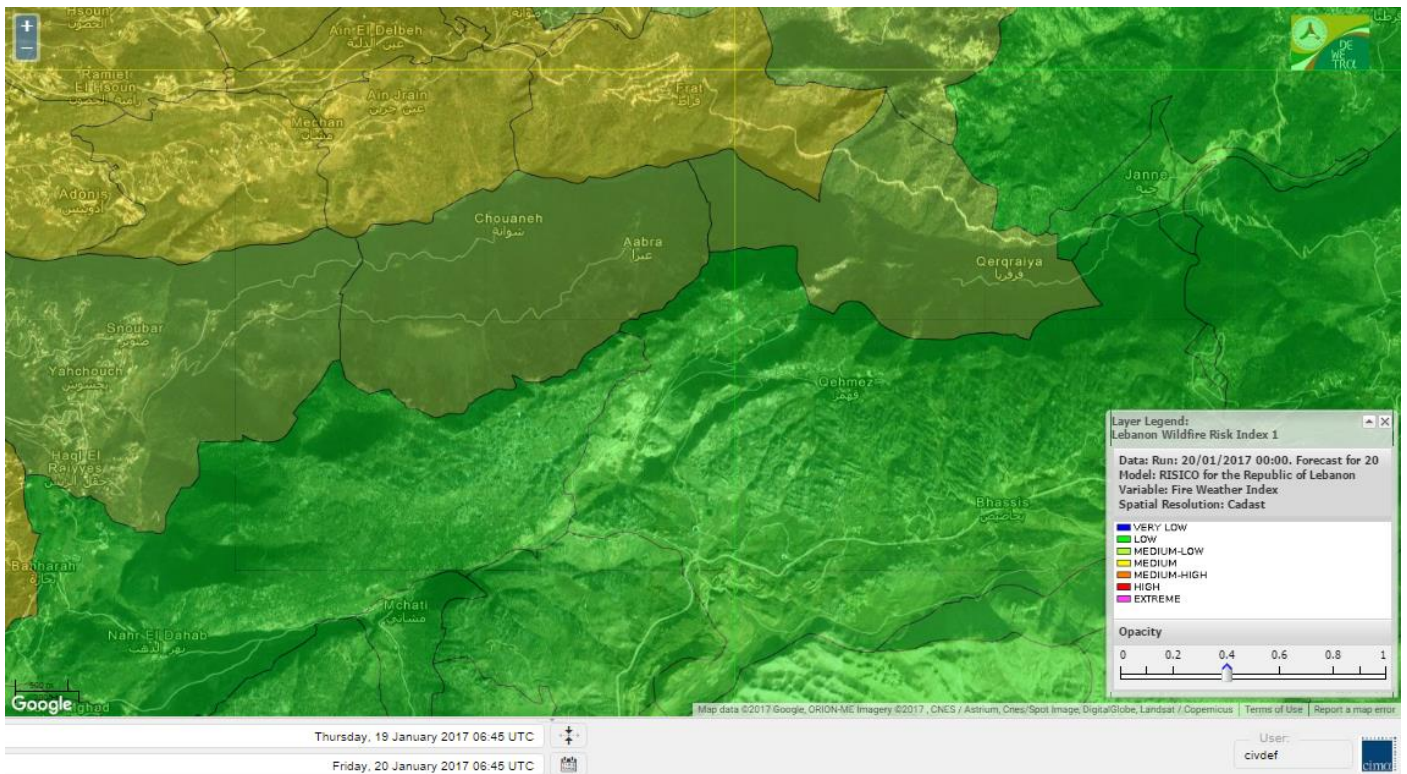
Shouf Biosphere Reserve Forecast for 21 January 2017



Shouf Biosphere Reserve Forecast for 22 January 2017



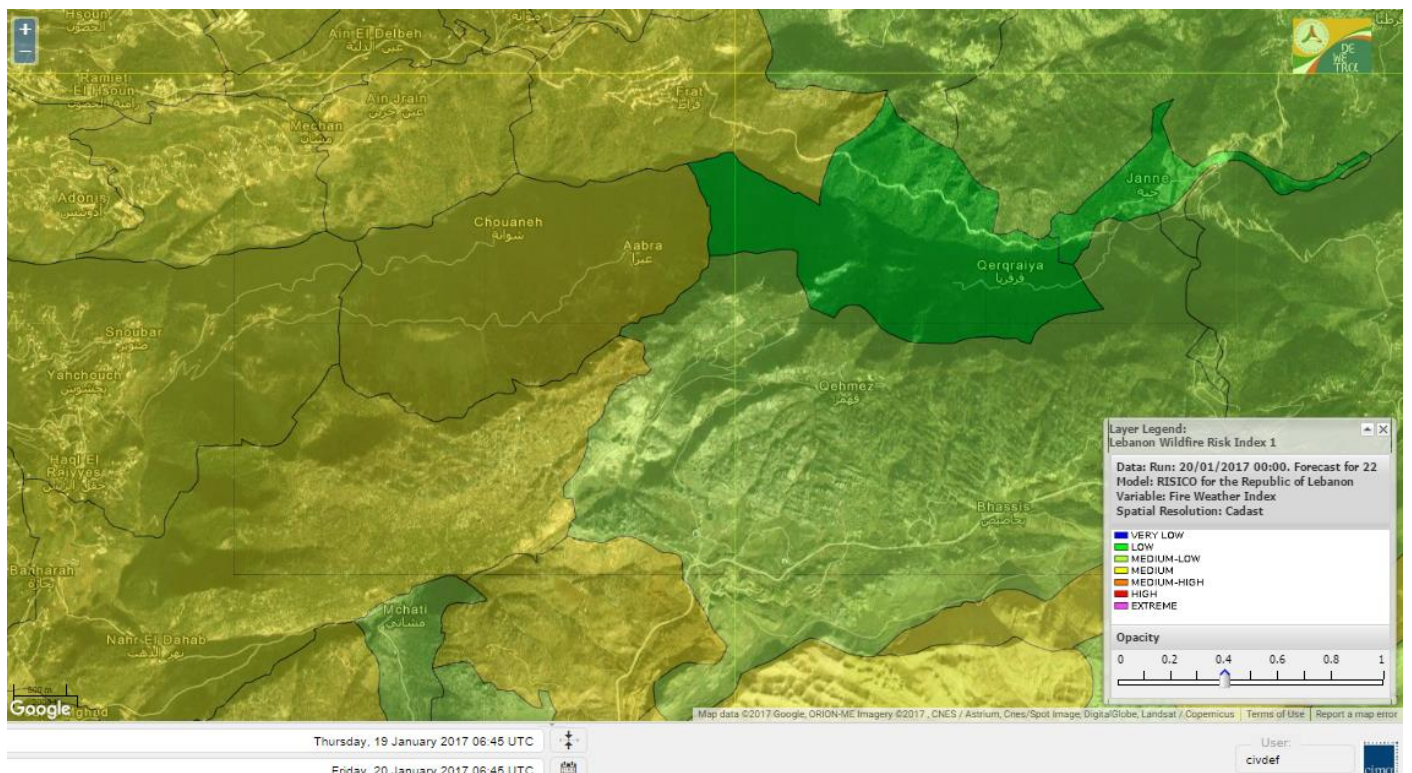
Jabal Moussa Reserve Forecast for 20 January 2017



Jabal Moussa Reserve Forecast for 21 January 2017



Jabal Moussa Reserve Forecast for 22 January 2017



Nord

Koura

Municipality	20-Jan	21-Jan	22-Jan	Municipality	20-Jan	21-Jan	22-Jan	Municipality	20-Jan	21-Jan	22-Jan
Aaba	M	ML	M	Afsaddiq	M	L	M	Ain Ekriane	M	L	M
Amioun	M	L	M	Anfeh	M	ML	M	Badbhoun	M	L	M
Barghoun	M	ML	M	Barsa	M	ML	M	Batroumine	M	ML	M
Bdebba	M	ML	M	Bechmizzine	M	L	M	Bednaye El-Koura	M	L	M
Bhabbouch El-Koura	M	L	M	Bkeftine	M	ML	M	Bnehran	M	L	M
Bqaiia El-Koura	M	ML	M	Bsarma	M	ML	M	Btaaboura	M	ML	M
Bterram	M	ML	M	Btouratij	M	ML	M	Bziza	M	L	M
Dar Beechtar	M	ML	M	Dar Chmezzine	M	L	M	Deddeh	M	ML	M
Deir El-Balamand	M	L	M	Fih	M	ML	M	Hraiche	M	ML	M
Ijdaabrine	M	ML	M	Kaftoun	M	ML	M	Kefraya El-Koura	M	ML	M
Kfarakka	M	L	M	Kfarhata	M	L	M	Kfarhazir	M	L	M
Kfarkahel	M	ML	M	Kfarsaroun	M	L	M	Kosba	M	L	M
Mejdel el-Koura	M	ML	M	Nakhle	M	ML	M	Qalhat	M	L	M
Ras Masqa	M	ML	M	Rechdibbine	M	L	M	Zakroun	M	ML	M
Zgharta El-Mtaouile	M	L	M								

Bcharre

Municipality	20-Jan	21-Jan	22-Jan	Municipality	20-Jan	21-Jan	22-Jan	Municipality	20-Jan	21-Jan	22-Jan
Aabdine	M	L	M	Bane	L	L	M	Barhelioun	M	L	M
Bazouone	L	L	ML	Becharre	L	ML	M	Beit Menzer	ML	L	M
Billa	ML	L	M	Blaouza	L	L	M	Bqaa Kafra	VL	L	ML
Bqerqacha	L	L	ML	Breissat	L	L	M	Dimane	L	L	ML
Hadath El Jobbeh	L	L	ML	Hadchit	L	L	M	Hasroun	L	L	ML
Mazraat Aassaf	M	L	L	Mazraat Bani Saab	ML	L	ML	Mchaa El-Jobbeh	L	ML	M
Metrit	M	L	M	Moghr El-Ahoual	M	L	M	Ouadi Qannoubine	M	ML	L
Qanat	ML	L	M	Qnayer	M	L	M	Tourza	M	L	M

Batroun

Municipality	20-Jan	21-Jan	22-Jan	Municipality	20-Jan	21-Jan	22-Jan	Municipality	20-Jan	21-Jan	22-Jan
Aabrine	M	L	M	Aalali	M	L	M	Aartiz	M	ML	ML
Abdelli	M	L	M	Ajdabra	M	L	M	Assia	M	ML	ML
Basbina	M	L	M	Batroun	M	ML	M	Bcheleh	ML	L	M
Bechtoudar	M	L	ML	Beit Chlala	M	L	ML	Beit Kassab	M	L	L
Bijdarfil	M	ML	M	Bqesmaya	M	ML	M	Chatine	L	L	M
Chebtin	M	ML	M	Chekka	M	ML	M	Daael	M	ML	ML
Dahr Abi Yaghi	M	ML	M	Daraya El-Batroun	M	ML	M	Deir Billa	M	L	ML
Deir Kfifane	M	ML	M	Deir Mar Youhanna EL	M	L	L	Deir Mar Youssef Jra	M	L	M
Douma	ML	L	M	Douq	M	L	M	Eddeh El-Batroun	M	L	M
Ftihat El-Batroun	M	ML	L	Ghouma	M	ML	M	Hadtoun	M	L	ML
Hamat	M	ML	M	Harbouna	M	ML	M	Hardine	M	L	L
Helta	M	ML	L	Hery	M	ML	M	Jebbla	M	ML	ML
Jrabta El-Batroun	M	ML	M	Jrane El-Batroun	M	ML	M	Kfar Aabida	M	L	M
Kfar Halda	M	L	L	Kfarb Shlaimane	M	L	L	Kfarhatna	M	ML	M
Kfarhay	M	ML	M	Kfarhelos	M	L	M	Kfifane	M	ML	M

Kfour El Arabi	M	L	M	Koubba	M	ML	M	Kour	M	ML	M
Mar Mama	M	L	ML	Masrah	M	L	M	Mehmarch	M	L	M
Mrah Chdid	M	L	M	Mrah El Ziyat	M	ML	M	Mrah El-Hajj	M	L	L
Nahle El-Batroun	M	L	ML	Niha El-Batroun	L	L	M	Ouajh El-Hajjar	M	ML	M
Ouata Houb	L	L	ML	Qatnaaoun	M	L	M	Racha	M	L	M
Rachana	M	L	M	Rachkida	M	L	M	Ram El-Batroun	M	L	ML
Ras Nahhach	M	L	M	Selaata	M	ML	M	Sghar	M	ML	M
Smar Jbayl	M	L	M	Sourat El-Batroun	M	ML	ML	Tannourine El-Faouqa	L	L	M
Tannourine Et-Tahta	ML	L	ML	Thoum	M	L	M	Toula El-Batroun	M	ML	M
Zan	M	ML	M								

Zgharta

Municipality	20-Jan	21-Jan	22-Jan	Municipality	20-Jan	21-Jan	22-Jan	Municipality	20-Jan	21-Jan	22-Jan
Aachach	M	M	M	Aalma	M	ML	M	Aarde	M	M	M
Aintourine	M	L	M	Arabet Qozhaya	M	L	M	Arde	M	ML	M
Arjis	M	ML	M	Asnoun	M	ML	M	Ayto	M	L	M
Basloukit	L	L	M	Bchannine	M	ML	M	Besebeel	M	ML	M
Bhairret Toula	L	L	M	Bnachee	M	L	M	Boussit	M	ML	M
Danha	M	ML	M	Daraiya Zgharta	M	ML	M	Deir Jdeide	M	ML	M
Ehden	L	L	M	Halan	M	M	M	Hariq Zgharta	M	ML	M
Houakir	M	L	M	Hraiqis	M	ML	M	laal	M	L	M
Ijbaa	ML	L	M	Karm Saddeh	M	L	M	Kfarchakhna	M	ML	M
Kfardlaqous	M	ML	M	Kfarfou	M	L	M	Kfarhata Zgharta	M	ML	M
Kfarhoura	M	ML	M	Kfarsghab	L	L	M	Kfaryachit	M	ML	M
Kfarzaina	M	ML	M	Khaldiye	M	L	M	Mazraat Ajbeaa	M	ML	M
Mazraat Et-Teffah	M	L	M	Mazraat Jneid	M	ML	M	Mejdlaiya Zgharta	M	M	M
Merh Kfarsghab	M	L	M	Miryata	M	M	M	Miziara	M	L	M
Mzraat Kefraya	M	M	M	Qorah Bach	M	ML	M	Rachiine	M	ML	M
Ras Kifa	M	L	M	Sakhra	M	L	M	Sebhel Zgharta	M	L	M
Serhel	M	L	L	Tallet Zgharta	M	ML	M	Toula Zgharta	L	L	M
Zgharta	M	ML	M								

Minieh-Denniye

Municipality	20-Jan	21-Jan	22-Jan	Municipality	20-Jan	21-Jan	22-Jan	Municipality	20-Jan	21-Jan	22-Jan
Aasaymout	M	ML	ML	Aaymar	M	ML	M	Aazki	M	ML	M
Ain El-Tineh-Miniyeh	L	ML	M	Assoun	M	ML	M	Bakhaaoun	M	ML	M
Bchennata	L	L	M	Bechehhara	M	L	M	Beddawi	M	M	M
Behouaita	ML	L	M	Beit El Foqss	L	ML	M	Beit Haouik	M	M	M
Beit Zoud	M	ML	M	Bekaasafrine	L	ML	M	Borj El Yahoudiyeh	M	ML	M
Bqarsouna	L	ML	M	Btermaz	M	ML	ML	Debaael	M	ML	M
Deir Ammar	M	M	M	Deir Nbouh	M	ML	M	Haouaret-Miniyeh	ML	ML	M
Haql el Azimeh	M	ML	M	Harf El Siyad	M	ML	ML	Hazmiye-Miniyeh	L	ML	M
Izal	M	ML	M	Jarjour	M	L	M	Jayroun	L	ML	M
Kahf El-Malloul	M	L	M	Karm El-Moher	ML	ML	M	Kfar Binine	L	ML	M
Kfarchalane	M	ML	M	Kfarhabou	M	ML	M	Kharroub-Miniyeh	M	ML	M
Mazraat El-Kreme	M	ML	M	Mazraat Ketrane	M	ML	M	Merkebta	M	M	M
Minyeh	M	M	M	Mrah El Sfirat	ML	ML	M	Mrah Sraj	M	ML	M
Mrebbine	L	M	M	Nabi Youcheaa	M	M	M	Nemrine	L	ML	M

Qarhaiya	M	ML	M	Qarne	L	ML	ML	Qarsita	L	ML	M
Qattineh-Miniyeh	M	ML	ML	Qemmamine	L	ML	M	Qraine	M	ML	ML
Raouda-Aadoua	M	M	M	Rihaniyet-Miniyeh	M	M	M	Sfireh	ML	ML	M
Sir Ed-Danniyeh	ML	ML	M	Tarane	M	ML	M	Terbol-Miniyeh	M	M	M
Zaghartaghriine	M	ML	M	Zouq Bhannine	M	M	M				

Nabatiye

Nabatiye

Municipality	20-Jan	21-Jan	22-Jan	Municipality	20-Jan	21-Jan	22-Jan	Municipality	20-Jan	21-Jan	22-Jan
Aabba	M	M	M	Aazzi	M	ML	M	Adchit El-Chqif	M	M	M
Ain Bou Swar	M	L	M	Ain Kana	M	L	M	Ali El-TaHER	M	L	M
Ansar	M	M	M	Arab Salim	M	L	M	Arnoun	M	L	M
Bfaroue	M	L	M	Breyqaah	M	M	M	Charqiyeh	M	ML	M
Choukine	M	L	M	Deir El Zahrani	M	ML	M	Doueir El-Nabatiyeh	M	M	M
Habbouch El-Nabatiye	M	ML	M	Hamra El-Nabatiyeh	M	L	M	Harouf El-Nabatiyeh	M	L	M
Hmaile	M	ML	M	Houmin El Faouqa	M	ML	M	Houmin El Tahta	M	ML	M
Jarjough	M	L	M	Jbaah El-Nabatiyeh	M	L	M	Jebchit	M	ML	M
Kfar Djal El-Nabatiy	M	ML	M	Kfar Remmane	M	L	M	Kfar Sir	M	ML	M
Kfar Tebnit	M	L	M	Kfarfila	M	L	M	Kfour El-Nabatieh	M	L	M
Mayfadoun	M	L	M	Mazraat Bsaffour	M	M	M	Mazraat Chalbaal	M	M	M
Mazraat Dmoul	M	M	M	Mazraat El Khreibeh	M	L	M	Mazraat El-Bayad El-	M	ML	M
Mazraat Kfarjaouz	M	L	M	Mazraat Qalaat Meiss	M	M	M	Nabatiyeh El-Fawka	M	L	M
Nabatiyeh Et-Tahta	M	L	M	Namiriyyeh	M	L	M	Qaaqaaiyet El Jisr	M	ML	M
Qossaibeh El-Nabatiy	M	M	M	Roumine	M	ML	M	Sarba El-Nabatieh	M	L	M
Sir El-Gharbiyeh	M	M	M	Toul	M	L	M	Yehmor El-Nabatiyeh	ML	L	M
Zaoutar El Charkiyeh	ML	L	M	Zaoutar El-Gharbiyeh	M	L	M	Zebdine El-Nabatiyeh	M	L	M
Zefta	M	L	M								

Hasbaiya

Municipality	20-Jan	21-Jan	22-Jan	Municipality	20-Jan	21-Jan	22-Jan	Municipality	20-Jan	21-Jan	22-Jan
Ain Jarfa	M	L	ML	Abou Qamha	M	L	M	Ain Qania	M	L	M
Bourghos	M	L	M	Chebaa	L	L	M	Chouaya Hasbaya	ML	L	M
Dellafeh	M	L	M	Fardiss Hasbaiya	M	L	M	Hasbaya	M	L	M
Hbariyeh	M	L	M	Kaoukaba Hasbaiya	M	L	M	Kfar Chouba	ML	L	M
Kfar Hamam	ML	L	M	Kfeir El-Zait	M	L	M	Khalwat Hasbaya	L	L	ML
Khreibet Hasbaiya	M	L	M	Majidiyeh Hasbaiya	ML	L	M	Marj Ez-Zhour (Haouc	M	L	M
Meri	M	ML	M	Mimass	M	L	M	Rachaiya El-Fokhar	M	L	M
Salaiyeb	ML	L	M								

Marjayoun

Municipality	20-Jan	21-Jan	22-Jan	Municipality	20-Jan	21-Jan	22-Jan	Municipality	20-Jan	21-Jan	22-Jan
Aalmane Marjaayoun	ML	L	M	Aamra	ML	ML	M	Adayseh Marjaayoun	ML	L	M
Adchit El-Koussair	ML	L	M	Ain Arab Marjaayoun	M	L	M	Bani Haiyann	L	L	M
Blatt Marjaayoun	M	L	M	Blida	ML	ML	M	Borj El-Moulouk	ML	L	M
Boueyda Marjaayoun	M	L	M	Deir Mimass	ML	L	M	Deir Siriane	ML	L	M
Dibbine	M	L	M	Ebel El Saqi	M	L	M	Houla	L	L	M
Houra	ML	L	M	Kfar Kila	ML	L	M	Khiam Marjaayoun	M	L	M

Klayaa	M	L	M	Majdel Selem	L	L	M	Marjaayoun	M	L	M
Markaba	ML	L	M	Mays El-Jabal	L	L	M	Mazraat Doumiat	M	L	M
Mazraat Sarada	M	L	M	Mhaibib	L	L	M	Qabrikha	L	L	M
Qantara	ML	L	M	Rab El-Thalathine	ML	L	M	Saouaneh Marjayoun	ML	L	M
Talloussa	L	L	M	Taybeh Matjaayoun	ML	L	M	Touline	ML	L	M

Bent Jbail

Municipality	20-Jan	21-Jan	22-Jan	Municipality	20-Jan	21-Jan	22-Jan	Municipality	20-Jan	21-Jan	22-Jan
Ain-Ebel	L	ML	M	Aitaroun	ML	L	M	Aynata Bint Jbeil	ML	L	M
Ayta El-Chaeb	L	L	ML	Ayta El-Jabal	ML	ML	M	Beit Lif	L	L	ML
Beit Yahoun	ML	ML	M	Bint Jbeil	L	L	M	Borj Qalaway	ML	ML	M
Braachit	L	L	M	Chakra	L	L	M	Debel	L	L	M
Deir Antar	M	ML	M	Froun	M	ML	M	Ghandouriyeh Bint Jb	ML	L	M
Hanine	L	L	M	Hariss	ML	ML	M	Hdatha	ML	ML	M
Jmeymeh	ML	L	M	Kafra Bint Jbeil	L	ML	ML	Kfar Dounine	ML	ML	M
Khirbet Selm	ML	ML	M	Kounine	L	L	M	Maroun El Ras	ML	L	M
Qalaway	ML	ML	M	Qaouzah	L	L	ML	Qatmoun	L	L	M
Ramya Bint Jbeil	L	L	ML	Rchaf	L	L	ML	Rmeich	L	L	M
Safad Al Battikh	ML	ML	M	Salhaneh	L	L	ML	Serbine	ML	ML	M
Sultanieh Bint Jbeil	ML	ML	M	Tibnine	ML	ML	M	Tiri	L	L	M
Yaroun	L	L	ML	Yater	ML	ML	M				

Mont Liban

Jbail

Municipality	20-Jan	21-Jan	22-Jan	Municipality	20-Jan	21-Jan	22-Jan	Municipality	20-Jan	21-Jan	22-Jan
Aabeydat	M	ML	M	Aalita	M	L	M	Aamchit	M	ML	M
Aarab El-Lahib	L	L	M	Aarasta	L	L	ML	Adonis Jbeil	M	L	M
Afqa Jbeil	L	L	ML	Ain El Delbeh Jbeil	M	L	M	Ain El-Ghouyba	L	L	ML
Ain Jrain	M	L	M	Ain Kfah	M	ML	M	Almat El Chemaliyat	M	L	M
Almat El-Jenoubiya	ML	L	M	Aqoura	L	L	M	Bayzoun	M	L	M
Bchille Jbeil	M	L	M	Bechtida	M	L	M	Behdaydat	M	ML	M
Beit Habbaq	M	ML	M	Bejjeh	M	ML	M	Bekhaaz	M	ML	M
Berbara Jbeil	M	ML	M	Bintael	M	L	M	Birket Hjoula	M	L	M
Blatt Jbeil	M	L	M	Boulhos	ML	L	ML	Breyj Jbeil	M	L	M
Chamat	M	ML	M	Chikhane	M	ML	M	Chmout	M	ML	M
Eddeh Jbeil	M	ML	M	Ehmej	L	L	M	Fatre	M	L	M
Ferhet	M	L	M	Fghal	M	L	M	Frat	M	L	M
Ghabat	L	L	ML	Ghalboun	M	ML	M	Gharzouz	M	ML	M
Ghofrine	M	ML	M	Habil	M	L	M	Halate	M	L	M
Haqel	M	L	M	Hbaline	M	ML	M	Hboub	M	L	M
Hdeine	L	VL	M	Hema Er-Rehban	L	L	M	Hema Mar Maroun Aann	L	VL	ML
Hjoula	M	L	M	Hosrayel	M	ML	M	Hsarat	M	ML	M
Hsoun	M	L	M	Jaj	L	L	M	Janne	L	L	L
Jbeil	M	ML	M	Jeddeyel Jbeil	M	L	M	Jlisse	M	L	M
Jouret El-Qattine	M	L	M	Kfar Baal Annaya	M	L	M	Kfar Kidde	M	ML	M
Kfar Kouas	M	L	M	Kfar Mashoun	M	ML	M	Kfoun	M	L	M

Kharbe Jbeil	M	L	M	Laqlouq	L	VL	M	Lassa	L	L	ML
Lehfed	M	L	ML	Maad	M	ML	M	Mar Sarkis	L	VL	M
Mastita	M	L	M	Mayfouq	M	L	ML	Mazraat El Siyad	L	VL	M
Mazraat El-Maaden	M	L	M	Mechane	M	L	M	Mechmech Jbeil	M	L	M
Mehrin	M	L	M	Mejdel El-Akoura	L	L	ML	Mghayreh Jbeil	L	L	M
Mounsef	M	ML	M	Nahr Ibrahim	M	L	M	Qahmez	L	L	ML
Qartaba	L	L	ML	Qartaboun	M	ML	M	Qattara Jbeil	M	L	ML
Qorqraya	ML	L	L	Ramout	M	ML	M	Ras Osta	M	L	M
Rihane Jbeil	M	ML	M	Sakiet El-Khayt	M	L	M	Saqi Richmaya	ML	L	M
Sebrine	M	L	M	Seraita	L	L	ML	Souane Jbeil	M	L	M
Tadmor	L	VL	M	Tartej	L	L	M	Torzaiya	M	L	M
Yanouh Jbeil	L	L	ML	Zibidine Jbeil	M	L	M				

El Metn

Municipality	20-Jan	21-Jan	22-Jan	Municipality	20-Jan	21-Jan	22-Jan	Municipality	20-Jan	21-Jan	22-Jan
Aain El-Qabu	L	L	ML	Aain El-Qach	M	L	M	Aain El-Teffaha	M	L	M
Aain el-Safssaf El-M	M	L	M	Abou Mizane	M	L	M	Ain Aar	M	L	M
Ain Alaq	M	L	M	Ain El-Kharroube	M	L	M	Ain El-Sendiane	M	L	M
Ain El-Zeitoune	L	L	M	Ain Saadeh	M	L	M	Aintoura El-Matn	L	L	M
Amaret Chalhoub	M	ML	MH	Antelias	M	L	M	Atchaneh	M	L	M
Ayroun	M	L	M	Baabdat	M	L	M	Baouchariyeh	M	ML	MH
Baskinta	L	L	ML	Beit Chabab	M	L	M	Beit El-Chaar	M	L	M
Beit El-Kekko	M	L	M	Beit Mery	M	L	M	Bhersaf	M	L	M
Bikfaya	M	L	M	Biyakout	M	ML	M	Bnabil	ML	L	M
Bourj Hammoud	M	ML	MH	Bqennaya	M	L	M	Broummana El-Matn	M	L	M
Bsalim	M	L	M	Bsifrine	M	L	ML	Bteghrine	L	L	M
Chaouiye	M	L	M	Chouaya El-Matn	M	L	M	Choueir	M	L	M
Chrine	M	L	M	Dahr El Sawan El-Mat	M	L	M	Daychouniyeh	M	ML	M
Dbayeh	M	L	M	Deir Chamra	M	L	ML	Deir Mar Abda el Mch	M	L	M
Deir Mar Roukouz	M	ML	M	Deir Tamiche	M	L	M	Dik El-Mehdi	M	L	M
Dikwaneh	M	ML	MH	Douar El-Matn	M	L	M	Fanar	M	ML	M
Fraike	M	L	M	Haret El-Ballaneh	M	L	M	Hbous	M	L	M
Himlaya	M	L	M	Jal El Did	M	ML	M	Jdeideh El-Metn	M	ML	MH
Jouar El-Matn	ML	L	M	Jouret El-Ballout	M	L	M	Kaaqour	M	L	M
Kfar Aaqab	L	L	M	Kfertay El-Matn	L	L	ML	Khenchara	ML	L	M
Khillet El-Mtain	M	L	M	Konnabat Broummana	M	L	M	Konnabat Salima	M	L	ML
Machraah El-Matn	L	L	M	Majdel Tarchich	L	L	M	Majzoub	M	L	M
Mansouriyeh El-Metn	M	ML	M	Mar Boutros Karm Et-	M	L	M	Mar Chaya et Mzekke	M	L	M
Mar Moussa Ed-Douar	M	L	M	Marjaba	L	L	M	Masqa	M	L	M
Mayasse	M	L	M	Mazraat Deir Aoukar	M	L	M	Mazraat El-Hadirat	M	L	M
Mazraat Yachouh	M	L	M	Mchikha	L	L	M	Menqlet Mezher	M	L	M
Mhaydseh Matn	M	L	M	Mkalles	M	ML	M	Mrouj	L	L	M
Mtain	L	L	M	Mtayleb	M	L	M	Nabay	M	L	M
Naccache	M	L	M	Ouadi Chahine	M	L	M	Ouadi El-Karm El-Mat	L	L	M
Ouata El-Mrouj	ML	L	M	Ouyoun El-Matn	M	L	M	Qornet Chehwan	M	L	M
Qornet El-Hamra	M	L	M	Roumieh	M	L	M	Sfeilet Bikfaya	M	L	M
Sinn El-Fil	M	ML	MH	Zabbougha	ML	L	M	Zalqa	M	ML	M

Zarouon	M	L	M	Zekrite	M	L	M	Zighrine El-Matn	M	L	M
Zouk El-Khrab	M	L	M								

Chouf

Municipality	20-Jan	21-Jan	22-Jan	Municipality	20-Jan	21-Jan	22-Jan	Municipality	20-Jan	21-Jan	22-Jan
Aalmane El-Chouf	M	ML	M	Aammq El-Chouf	M	L	ML	Ain Ouzein	M	L	ML
Ain Qani	M	L	ML	Ain Zhalta	ML	L	M	Ainbal	M	L	ML
Amatour	M	L	ML	Anout	M	L	M	Atrine	M	L	M
Baadarane	M	L	M	Baaqline	M	L	M	Baasir	M	ML	M
Barja	M	ML	M	Barouk	ML	L	M	Bater	M	L	M
Batloun	ML	L	M	Bayqoun	M	L	M	Bchetfine	M	L	M
Beiteddine	M	L	ML	Benouati Ech-Chouf	M	L	ML	Berjein	M	ML	M
Bireh et Mtalleh	M	L	M	Biret El-Chouf	ML	L	M	Bkechtine Ouel Mchei	M	L	M
Bkifa El-Chouf	M	L	M	Botme	M	L	ML	Bqaiaa Ech-Chouf	M	ML	M
Bsaba El-Chouf	M	L	M	Chammis El-Chouf	M	ML	M	Chehim	M	L	M
Chemaarine	M	L	M	Chourit	M	L	L	Daher El-Chouf	M	ML	M
Dalhoun	M	L	M	Damour	M	ML	M	Daraya El-Chouf	M	L	M
Deir El-Moukhalles	M	L	M	Deir Baba	M	L	M	Deir Dourit	M	L	ML
Deir El-Qamar	M	L	M	Deir Kouche	M	L	M	Dibbieh	M	ML	M
Dmit	M	ML	M	Fouara Jaafar	M	L	ML	Fraidis El-Chouf	ML	L	M
Ghabet Jaafar	M	L	M	Gharife	M	L	ML	Haret Jandal	M	L	M
Hasrout	M	L	M	Jadra	M	M	M	Jahlieh	M	L	M
Jbeih El-Chouf	M	L	M	Jdeidet El-Chouf	M	L	ML	Jiyeh	M	ML	M
Jleilyeh	M	L	M	Jmailiyeh	M	ML	M	Joun	M	L	M
Kahlounie El-Chouf	M	L	M	Ketermaya	M	L	M	Kfar Faqoud	M	L	M
Kfar Hamal	M	L	M	Kfar Him	M	L	M	Kfar Katra	M	L	M
Kfar Niss	M	L	M	Kfar hay	M	L	ML	Kfarnabrakh	M	L	M
Khirbet Bisri	M	L	ML	Knayse El-Chouf	M	L	L	Maaniyeh	M	L	M
Maasser Beiteddine	M	L	ML	Maasser El-Chouf	ML	L	M	Majdalouna	M	L	M
Majdel El-Meouch	M	L	ML	Mazboud	M	L	M	Mazmoura	M	L	M
Mazraat El Chouf	M	L	M	Mazraat El Daher	M	L	ML	Mazraat El-Douair	M	L	L
Mechref	M	ML	M	Mghairie	M	L	M	Mghayrie El-Chouf	M	ML	M
Moukhtara	M	L	ML	Mrusti	M	L	M	Mtolle	M	L	M
Naameh	M	ML	M	Niha El-Chouf	M	L	M	Ouadi Abou Youssef	M	L	ML
Ouadi Ed-Deir	M	ML	M	Ouadi El-Sit	M	L	ML	Ouadi bnehlay	M	L	L
Qraibeh	M	L	M	Qreiaa	M	L	ML	Rmayle El-Chouf	M	M	M
Semqaniyeh	M	L	M	Sibline	M	ML	M	Sirjbeil	M	L	M
Warhanieh	ML	L	M	Werdaniyeh	M	ML	M	Zaarourieh	M	L	M

Baabda

Municipality	20-Jan	21-Jan	22-Jan	Municipality	20-Jan	21-Jan	22-Jan	Municipality	20-Jan	21-Jan	22-Jan
Abadiyeh	M	L	M	Ain Mouaffaq	M	L	M	Araiya	M	L	M
Arbaniyeh	M	L	M	Arsoun	M	L	M	Baabda	M	ML	M
Baalchmey	M	L	M	Bmaryam	M	L	M	Bourj El-Brajneh	M	ML	MH
Boutchay	M	L	M	Bsaba Baabda	M	L	M	Btekhney	M	L	M
Btibyat	M	L	M	Bzbeddine	ML	L	M	Chbeniyeh	ML	L	M
Chiyah	M	ML	MH	Chmeisset Baabda	M	L	M	Chouit	M	L	M
Deir El-harf	M	L	M	Deir Khouna	M	L	M	Dlaybeh	M	L	M

Falougha	ML	L	M	Furn El-Chebbak	M	ML	MH	Hadath Beyrouth	M	ML	MH
Halaliyeh Baabda	M	L	M	Hammana	ML	L	M	Haret El Sett	M	L	M
Haret Hamze	M	L	M	Haret Hreik	M	ML	MH	Hasbaiya El-Metn	M	L	M
Jouar El-Hoz	L	L	ML	Jouret Arsoun	M	L	M	Kfar Chima	M	L	M
Kfar Selouane	L	L	ML	Khalouat Baabda	L	L	M	Kneisset Baabda	M	L	M
Laylakeh	M	L	M	Louayzeh Baabda	M	ML	M	Merdache	M	L	M
Mzairaa Baabda	M	L	M	Ouadi Chahrour El Ol	M	L	M	Ouadi Chahrour El So	M	L	M
Qalaa Baabda	M	L	M	Qhraybe Baabda	M	L	M	Qobbayaa	ML	L	M
Qornayel	ML	L	M	Qortada	M	L	ML	Qrayeh Baabda	ML	L	M
Qsaibeh Baabda	M	L	M	Qtale Baabda	M	L	M	Ras El Metn	M	L	M
Ras El-Haref	M	L	M	Rouayset El-Ballout	M	L	M	Salima Baabda	M	L	M
Tahouitat El Ghadir	M	ML	MH	Tarchich	L	L	M	Zandouqa	M	L	ML

Aley

Municipality	20-Jan	21-Jan	22-Jan	Municipality	20-Jan	21-Jan	22-Jan	Municipality	20-Jan	21-Jan	22-Jan
Abey	M	L	M	Aghmid	ML	L	M	Ain Dara	ML	L	M
Ain Drafil	M	ML	M	Ain El Halazoun	M	L	M	Ain El-Rmmaneh	M	L	M
Ain Jedideh	M	L	M	Ain Ksour	M	L	M	Ain Onoub	M	L	M
Ain Traz	M	L	ML	Ainab	M	L	M	Aley	M	L	M
Aramoun	M	ML	M	Aytat	M	L	M	Azouniyeh	ML	L	M
Baawerta	M	ML	M	Badghan Oua Wadi Bad	ML	L	M	Bassatine	M	L	M
Bayssour	M	L	M	Bchamoun	M	ML	M	Bdadoun	M	L	M
Behouara	M	L	M	Bennay	M	L	M	Bhamdoun El-Dayaa	M	L	M
Bhamdoun El-Mhatta	M	L	M	Bkhechtey	M	L	M	Bleibel	M	L	M
Bmakine	M	L	M	Bmehray	ML	ML	M	Bouzrid	M	L	ML
Bserrine	M	L	M	Bsous	M	L	M	Btalloun	M	L	M
Btater	M	L	M	Chanay	M	L	M	Charoun	ML	L	M
Chartoun	M	L	M	Chemlane	M	L	M	Choueifat El-Aamrous	M	ML	M
Choueifat El-Oumara	M	ML	M	Choueifat El-Quoubbe	M	ML	M	Dakkoun	M	ML	M
Deir Qoubel	M	L	M	Dfoun	M	L	M	Douair El Remmaneh	M	L	M
Ghaboun	M	L	M	Habramoun	M	L	M	Homs Oua Hama	M	L	M
Houmal	M	L	M	Jisr El Qadi	M	L	M	Kehaleh	M	L	M
Keyfoun	M	L	M	Kfar Aamey	M	L	M	Kommatyeh	M	L	M
Maasrati	M	L	M	Majdel Baana	ML	L	M	Mansourieh et Ain El	M	L	M
Mazraat El-Nahr	M	L	M	Mchakhte	ML	L	M	Mecherfeh	M	L	M
Mejdlaya	M	L	M	Mrayjat	ML	L	M	Ramliyah	M	L	M
Rechmaya	M	L	M	Rejmeh	M	L	M	Remhala	M	L	M
Rouaysset El Neemane	M	L	M	Saoufar	ML	L	M	Selfaya	M	L	ML
Sirhmoul	M	L	M	Souq El Ghareb	M	L	M	Taazanieh	M	L	M

Kesrouane

Municipality	20-Jan	21-Jan	22-Jan	Municipality	20-Jan	21-Jan	22-Jan	Municipality	20-Jan	21-Jan	22-Jan
Achkout	M	L	M	Adma Oua Dafneh	M	L	M	Ain Ed-Delbe Kesroua	L	VL	ML
Ain El-Rihane	M	L	M	Aintoura Kesrouane	M	L	M	Ajaltoun	M	L	M
Akaybeh Kesrouane	M	L	M	Aramoun Kesrouane	M	L	M	Azra ouel Ozor	M	L	M
Ballouneh	M	L	M	Batha	M	L	M	Bekaatat Achkout	ML	L	M
Bekaatat Kanaan	L	L	ML	Bizhel	M	L	M	Bouar	M	L	M
Bqaatouta	L	VL	M	Bqaq Ed-Dine	M	L	M	Bzommar	M	L	M

Chahtoul	M	L	M	Chnaniir	M	L	M	Chouan	ML	VL	M
Daraya Kesrouane	M	L	M	Darououn	M	L	M	Deir Baqlouch	M	L	M
Dlebta	M	L	M	Eghbeh	M	L	ML	Faraya	L	L	M
Fatka	M	L	M	Feytroun	L	L	M	Ghazir	M	L	M
Ghbaleh Kesrouane	M	L	M	Ghedrass	M	L	M	Ghosta	M	L	M
Ghynéh	M	L	M	Harharaya w Kattine	M	L	M	Harissa Kesrouane	M	L	M
Hayata	M	L	M	Hosein	M	L	M	Hrajel	L	L	M
Jdeideh Ghazir	M	L	M	Jeita	M	L	M	Jounieh Ghadir	M	L	M
Jounieh Haret Sakhr	M	L	M	Jounieh Salel Alma	M	L	M	Jounieh Sarba	M	L	M
Jouret Bedrane	M	L	M	Jouret Mhad	L	L	M	Jouret Termos	M	L	M
Kfar Debiane	L	L	ML	Kfar Tay Kesrouane	L	L	ML	Kfar Yassine	M	L	M
Kfour Kesrouane	M	L	M	Kharayeb Nahr Ibrahi	M	L	M	Klayaat Kesrouane	M	L	M
Maarab	M	L	M	Maaysra Kesrouane	M	L	M	Mayrouba	L	VL	M
Mazraat Er-Ras	M	L	M	Mazraat Mrah El-Mir	M	L	M	Mchaa El Ftouh	L	L	M
Mchaa Faraya	L	L	ML	Mchaa Kfar Dibiane	L	L	M	Mghaer	L	VL	ML
Mradiyah	M	L	M	Nahr Ed-Dahab	L	L	M	Nammoura Kesrouane	M	L	M
Ouata El Jaouz	L	VL	M	Ouata Sillam	M	L	M	Raachine	ML	L	M
Rayfoun	M	L	M	Safra Kesrouane	M	L	M	Shayle Kesrouane	M	L	M
Tabarja	M	L	M	Yahchouch	ML	L	M	Zaaytreh	M	L	M
Zeytoun	M	L	M	Zouk Mikael	M	L	M	Zouk Mosbeh	M	L	M

Baalbek_Hermel

Baalbek

Municipality	20-Jan	21-Jan	22-Jan	Municipality	20-Jan	21-Jan	22-Jan	Municipality	20-Jan	21-Jan	22-Jan
Aadous	M	ML	M	Aamchki	L	L	M	Aarsal	M	M	ML
Ain Baalbek	M	M	ML	Ain Bourday	L	L	M	Ain El-Benye	L	L	M
Ain El-Jaouz Baalbek	L	M	ML	Ain El-Siya Chadoura	L	L	M	Al Khodr Baalbek	M	ML	M
Al Nabi Chit	M	ML	M	Aynata Baalbek	ML	M	M	Baalbek	ML	L	M
Bachwat	M	ML	M	Barqa	M	ML	M	Bednayel Baalbak	M	ML	M
Beit Chama	M	ML	M	Bijjaje	M	M	ML	Bouday	M	M	M
Brital	ML	L	M	Btadi	M	M	M	Chaat	M	M	M
Chaibe	L	L	M	Chlifa	M	M	M	Chmestar	M	M	M
Dar El-Oussa	M	M	M	Deir El-Ahmar	M	M	M	Deir Mar Maroun Baal	M	M	M
Douris	M	ML	M	Fakiha	M	M	M	Hadath Baalbek	M	ML	M
Ham	L	L	M	Haour Taala	ML	ML	M	Hizzine	ML	L	M
Hlebta	M	M	M	Hosh Barada	M	ML	M	Hosh El Dahab	M	ML	M
Hosh El Snid	ML	L	M	Hosh El-Nabi	ML	L	M	Hosh El-Rafiq	M	ML	M
Hosh Tal Safiya	M	ML	M	Hrebta	M	M	M	laat	M	ML	M
Jebaa	M	M	M	Jenta	M	M	M	Kfar Dabach	ML	ML	M
Kfar Dane	M	L	M	Khraibeh El-Hermel	ML	M	ML	Khreibet Baalbek	ML	ML	M
Kneisset Baalbek	ML	M	M	Labueh	M	M	ML	Maarboun	L	L	M
Majdaloun	M	ML	M	Maqneh	M	M	M	Mazraat Beit Mcheik	ML	ML	M
Misraya	ML	L	M	Moqraq	M	M	ML	Nabha El-Damdoum	ML	ML	M
Nabi Chbay	L	L	M	Nabi Osman	M	M	ML	Nahleh baalbek	L	L	ML
Ouadi El-Oss	M	M	M	Qaa Baayoun	M	M	M	Qaa Jouar Maqiye	M	M	M
Qaa Ouadi El-Khanzir	M	M	M	Qah Baalbek	M	M	M	Qarha Baalbek	L	L	M

Qsarnaba	M	M	M	Ram Baalbek	M	ML	M	Ras Baalbek El Sahl	M	M	M
Ras Baalbek El-Charq	M	M	M	Riha	ML	M	M	Saaide	M	ML	M
Sbouba	ML	M	ML	Seriine El-Tahta	M	M	M	Slouqi	ML	M	M
Taiba Baalbek	M	ML	M	Talia	ML	L	M	Taraiya	M	ML	M
Temnin El Fawqa	M	M	M	Temnin El-Tahta	M	M	M	Tfail	L	M	ML
Yahfoufa	ML	ML	M	Yammouneh	ML	M	M	Younine	M	M	M
Zboud	M	M	M								

Hermel

Municipality	20-Jan	21-Jan	22-Jan	Municipality	20-Jan	21-Jan	22-Jan	Municipality	20-Jan	21-Jan	22-Jan
Charbine El-Hermel	M	M	M	Hermel Jbab	M	M	M	Hermel	M	M	M
Maaysra El-Hermel	L	M	M	Michaa Mrajhine	M	M	M	Ouadi Faara	M	M	M
Ras Baalbek - Ouadi	M	M	M	Ras Baalbek El Gharb	M	M	M	Zighrine	M	M	M

Akkar

Akkar

Municipality	20-Jan	21-Jan	22-Jan	Municipality	20-Jan	21-Jan	22-Jan	Municipality	20-Jan	21-Jan	22-Jan
Aain Tinta	ML	L	M	Aaiyat	L	ML	M	Aakkar El-Aatiqa	L	ML	ML
Aamar Akkar	M	M	M	Aamar El Baykat	ML	L	M	Aamayer	M	L	M
Aamriyet Akkar	ML	ML	M	Aandqet	ML	ML	ML	Aarmeh	ML	L	M
Aarqa	M	L	M	Aawaynat	L	L	M	Aayoun Akkar	L	L	M
Abboudiye	M	L	M	Ain El-Zeit	ML	ML	M	Ain Yaaqoub	L	ML	M
Akroum	ML	M	ML	Aridet Cheikh Zennad	M	L	M	Baldeh w Mazraat Bal	ML	L	M
Barcha	M	L	M	Bardeh	L	ML	M	Bebnine	M	M	M
Beino	L	L	M	Beit Ayoub	ML	M	M	Beit El-Haouch	M	ML	M
Beit Mellat	ML	ML	M	Beit Younes	ML	L	M	Berbara Akkar	ML	ML	M
Berqayel	M	ML	M	Bezbina	L	ML	ML	Bireh Akkar	L	L	M
Borj	ML	ML	M	Bqerezla	M	ML	M	Bzal	M	ML	M
Chane	ML	L	ML	Chaqdouf	ML	M	M	Charbila	ML	L	M
Cheikh Mohammad	M	L	M	Cheikh Taba Es-Sahl	M	L	M	Cheikh Taba	M	L	M
Cheikh Zennad	M	L	M	Cheikhlar	ML	L	M	Chir Hmairine	M	L	M
Daghle	ML	M	M	Dahr Laissine	ML	ML	M	Darine	M	L	M
Dawra	L	ML	ML	Dawsa w Baghdadi	ML	L	M	Dayret Nahr El-Kabir	L	VL	M
Deir Dalloum	M	M	M	Deir Jennine	ML	ML	M	Denbou	M	L	M
Dibbabiyyeh	ML	ML	M	Douair Aadwiyeh	ML	ML	M	Fassikine	ML	M	M
Fnaydek	L	ML	M	Fraydes Akkar	L	L	M	Ghazayle	M	L	M
Habchit	ML	L	ML	Hakour	M	L	M	Halba	M	L	M
Haouchab	M	L	M	Hayssat	M	L	M	Haytla	M	L	M
Hayzouq	ML	L	M	Hedd	ML	L	M	Hmaira Akkar	M	ML	M
Hmaiss Akkar	M	ML	M	Hnaider	M	L	M	Hokr Ed-Dahri	M	L	M
Hokr Etti	M	L	M	Hokr Jouret Srar	M	L	M	Houaich	M	ML	M
Hrar	L	ML	M	Idbil	M	L	M	Ilal	M	L	M
Janine	M	L	M	Jdeidet El-Joumeh	M	L	M	Jdeidet El-Kaiteh	M	ML	M
Jebraiel	M	ML	M	Kafr	M	ML	M	Kafr	ML	ML	M
Karm Asfour	M	L	M	Kfar Melki Akkar	M	M	M	Kfar Noun	L	L	M
Kfarharra	M	ML	M	Khalsa	ML	L	M	Kharnoubet Akkar	M	L	M

Khirbet Daoud Aakkar	L	ML	M	Khirbet El Remmane	L	L	M	Khirbet Shar	ML	M	M
Khoreybet El-Jindi	M	L	M	Khreibet Aakkar	ML	ML	M	Kneisset Aakkar	M	L	M
Kneisset Hnaider	M	L	M	Knisse	M	ML	M	Kroum El-Aarab	M	L	M
Kwachra	ML	ML	M	Kweykhat	M	L	M	Machta Hammoud	L	L	M
Majdala	M	ML	M	Majdel Akkar	ML	M	M	Mar Touma	M	M	M
Marlaya Melhem	M	M	M	Mashha	M	L	M	Massoudiye	M	L	M
Mazraat Beit Ghattas	M	L	M	Mazraat En-Nahriye	L	L	M	Mechmech	ML	ML	M
Memneh	M	L	L	Mhammara	M	M	M	Mighraq Aakkar	M	L	M
Minyara	M	L	M	Moqayteh	M	M	M	Mounjez	L	L	M
Msalla	ML	L	M	Mzeihmeh	ML	L	M	Nfaiseh	M	L	M
Noura Et-Tahta	ML	L	M	Ouadi El-Haour	ML	L	M	Ouadi El-Jamous	M	M	M
Ouyoun El-Ghizlane	M	M	M	Qaabarine	M	ML	M	Qabaait	M	ML	M
Qachlaq	ML	L	M	Qantara Aakkar	M	L	M	Qarha Aakkar	M	L	M
Qarqaf	M	M	M	Qboula	L	ML	M	Qleiaat Aakkar	M	L	M
Qloud El-Baqie	M	ML	M	Qobaiyat Aakkar	ML	M	ML	Qobbat Chamrat	M	M	M
Qorayat	ML	L	M	Qornet Aakkar	ML	ML	M	Qsair Aakkar	L	L	M
Rahbe	M	ML	M	Rihaniyet Aakkar	M	L	M	Rmah	L	L	M
Rmoul	M	M	M	Saadine	M	L	M	Sadaqa	ML	ML	M
Saidnaya	M	L	M	Sammouniye	M	L	M	Sayssoq	M	L	M
Semmaqiye	M	L	M	Semmaqli	M	M	M	Sfinet El-Dreib	ML	L	M
Sfinet El-Qaitaa	M	ML	M	Sindyanet Zeidane	L	ML	M	Souaisset Aakkar	M	L	M
Srar	M	L	M	Tal Abbas El Gharby	M	L	M	Tal Abbas El-Chargy	M	L	M
Tal Biret	M	L	M	Tal Hmayra	M	L	M	Tal Maayan Tal Kiri	M	L	M
Tal Sibel	M	M	M	Tallet Chattaha	ML	ML	M	Tikrit	ML	ML	M
Tleil	M	L	M	Tshea	L	ML	M	Zawarib	M	L	M
Zouq El Hosniyeh	M	L	M	Zouq El-Haddara	M	ML	M	Zouq El-Hbalsa	M	ML	M
Zouq El-Moqachrine	M	M	M								

Sud

Sour

Municipality	20-Jan	21-Jan	22-Jan	Municipality	20-Jan	21-Jan	22-Jan	Municipality	20-Jan	21-Jan	22-Jan
Aaiyeh	ML	M	M	Aalma El-Chaab	ML	ML	M	Aaytit	M	M	M
Abbassiyeh Sour	M	M	M	Abou Chech	ML	M	M	Ain Abou Abdallah	M	M	M
Ain Baal	M	M	M	Arzoun	M	M	M	Aziyeh	ML	M	M
Baflaya	M	ML	M	Barich	M	M	M	Batouliyeh	M	M	M
Bayad	ML	M	M	Bazouriyeh	M	M	M	Bediass	M	M	M
Bestiyat	M	M	M	Borj El Chemali	M	M	M	Borj En-Naqoura	ML	M	M
Borj Rahhal	M	M	M	Boustane	ML	ML	M	Btaychiyeh	ML	M	M
Chaaitiye	M	M	M	Chameh	ML	M	M	Chehabiye	ML	ML	M
Chehour	M	M	M	Chihine	L	ML	M	Debaal Sour	M	M	M
Deir Amess	L	ML	M	Deir Kifa	ML	ML	M	Deir Qanoun El-Ain	M	M	M
Deir Qanoun El-Naher	M	M	M	Derdghaiya	M	M	M	Dhayra	L	ML	M
Halloussiyeh	M	M	M	Hamoul	ML	ML	M	Hanaouey	M	M	M
Henniye	M	M	M	Hmairi Sour	M	M	M	Iskandarouna Sour	ML	M	M
Jbal El Botom	ML	ML	M	Jebbin	ML	ML	M	Jennata	M	M	M
Jijim	ML	ML	M	Jouaiya	M	ML	M	Kneisset Sour	M	M	M

Maarake	M	M	M	Maaroub	M	M	M	Majadel	ML	ML	M
Majdalzoun	ML	M	M	Mansouri Sour	M	M	M	Marnba	M	ML	M
Marouahine	L	ML	ML	Mazraat El-Zalloutiy	ML	ML	M	Mazraat Mechref	ML	ML	M
Mazraat Tayr Semhat	M	ML	M	Mheilib	M	M	M	Neffakhiyeh	ML	ML	M
Niha Sour	M	ML	M	Ouadi Jilo	M	M	M	Qana	M	M	M
Qolaileh Sour	M	M	M	Rechknay	ML	ML	M	Rmadiyah	M	M	M
Selha Sour	ML	ML	M	Siddiqine	ML	M	M	Sour	M	M	M
Srifa	M	M	M	Tayr Debbe	M	M	M	Tayr Felsay	M	M	M
Tayr Harfa	ML	ML	M	Touayri	ML	ML	M	Toura	M	M	M
Yanouh Sour	M	M	M	Yarine	ML	ML	M	Zebqine	L	ML	ML

Saida

Municipality	20-Jan	21-Jan	22-Jan	Municipality	20-Jan	21-Jan	22-Jan	Municipality	20-Jan	21-Jan	22-Jan
Aanqoun	M	ML	M	Aaqtanit	M	ML	M	Aarab Ej-Jall	M	ML	M
Aarab Tabbaya	M	ML	M	Abra Saida	M	ML	M	Adloun	M	M	M
Adousiyeh	M	ML	M	Ain-El-Deleb	M	ML	M	Arzai	M	M	M
Babliyah	M	M	M	Barty	M	L	M	Bissariyeh	M	ML	M
Bnaafoul	M	ML	M	Bqosta	M	ML	M	Bramiy	M	ML	M
Daoudiyeh	M	M	M	Dareb El-Sim	M	ML	M	Erkay	M	ML	M
Ghassanieh	M	ML	M	Ghazieh	M	ML	M	Hajjeh	M	ML	M
Haret Saida	M	ML	M	Hartiyeh	M	M	M	Hlaliye Saida	M	ML	M
Insariyat	M	M	M	Jazira Saida	M	M	M	Kafar Bit	M	L	M
Kaoutariyet El-Siyad	M	L	M	Kfar Chellal	M	L	M	Kfar Hatta Saida	M	L	M
Kfar Milke Saida	M	L	M	Khartoum	M	ML	M	Khaziz	M	ML	M
Khirbet Ed-Douair Sa	M	M	M	Khirbet El-Bassal	M	ML	M	Khrayeb Saida	M	M	M
Loubieh	M	M	M	Maghdouche	M	ML	M	Majdelyoun	M	ML	M
Matariyet El-Choumar	M	M	M	Matayriyeh	M	ML	M	Mazraat 'Mseileh	M	ML	M
Mazraat 'Snaiber	M	M	M	Mazraat Aarab Soukka	M	ML	M	Mazraat Deir Taqla	M	M	M
Mazraat El Yahoudiye	M	M	M	Mazraat El-Housseini	M	ML	M	Mazraat El-Mhaydaleh	M	M	M
Mazraat El-Ouasta	M	M	M	Mazraat Jamjim	M	M	M	Mazraat Kaoutariyet	M	M	M
Mazraat Kfar Badda	M	M	M	Mazraat Oussamiyat	M	M	M	Mazraat Sari	M	M	M
Mazraat Sinai	M	M	M	Meemariyeh	M	ML	M	Merouaniyeh	M	ML	M
Miyeh ou Miyeh	M	ML	M	Najjariyeh	M	ML	M	Qaaqiyat El-Snaouba	M	M	M
Qnarit	M	ML	M	Qraiye Saida	M	ML	M	Saida Ed-Dekermane	M	ML	M
Saida El-Oustani	M	ML	M	Saida El-Qadimeh	M	ML	M	Saida Kefraya	M	ML	M
Saksakiyeh	M	ML	M	Salhieh Saida	M	ML	M	Sarafand	M	M	M
Sfenta	M	L	M	Tafahta	M	ML	M	Tanbourit	M	ML	M
Tebna	M	M	M	Zaghdraiya	M	ML	M	Zeita	M	ML	M
Zrariyeh	M	M	M								

Jezzine

Municipality	20-Jan	21-Jan	22-Jan	Municipality	20-Jan	21-Jan	22-Jan	Municipality	20-Jan	21-Jan	22-Jan
Ain El-Mir (El Estab	M	L	M	Anane	M	L	M	Aramta	M	L	M
Ariya	M	L	M	Aychiyeh	M	L	M	Azour	M	L	ML
Baba	M	L	ML	Baysour Jezzine	M	L	M	Benoueteh Jezzine	M	L	M
Bhannine	M	L	M	Bisri	M	L	L	Bkassine	M	L	ML
Bouslaya	M	L	ML	Btedine El-Leqech	M	L	ML	Chbail	M	ML	ML
Choualiq Jezzine	M	L	M	Dahr Ed-Deir	M	L	M	Deir El Qattine	M	L	M

Demachqiyeh	M	L	M	Ghabbatiyeh	M	L	M	Harf Jezzine	M	L	ML
Hassaniyeh	M	L	M	Haytoupleh	M	L	M	Haytura	M	L	M
Hidab	M	L	M	Homsiyeh	M	L	M	Jabal Toura	M	L	M
Jarmaq	M	L	M	Jensnaya	M	ML	M	Jernaya	M	L	M
Jezzine	M	L	M	Karkha	M	L	M	Kfar Falous	M	L	M
Kfar Houna	M	L	M	Kfar Jarrah	M	ML	M	Lebaa	M	L	M
Louayzet Jezzine	M	L	M	Machmouche	M	L	ML	Mahmoudiyeh Jezzine	M	L	M
Maknounye Jezzine	M	L	ML	Maraat Ouzaïyeh	M	L	M	Mazraat Daraya	M	L	M
Mazraat El-Aarqoub	M	L	M	Mazraat El-Mathane	M	L	L	Mazraat El-Rahbane	M	L	M
Mazraat Khallet Khaz	M	L	M	Mazraat Louzid (Loua	M	L	ML	Mazraat Qrouh	M	L	M
Mazraat Tamra	M	L	M	Mazraat Zighrine Jez	M	L	M	Mazraat	M	L	M
Mharbiyeh	M	L	M	Midane Jezzine	M	L	ML	Mjeydel Jezzine	M	ML	M
Mlikh	M	L	M	Mrah El-Hbasse	M	L	M	Ouadi Baanquodaine	M	L	M
Ouadi El-Laymoun	M	L	M	Ouardiyeh	M	ML	ML	Qabaa Jezzine	M	L	ML
Qatrani	M	L	M	Qaytoupleh	M	L	M	Qtaleh Jezzine	M	L	ML
Rihane Jezzine	M	L	M	Rimat	M	L	M	Roum	M	L	M
Roummanet	M	L	M	Sabbah	M	L	M	Saydoun	M	L	ML
Sfaray	M	L	M	Snaya	M	L	ML	Sojoud	M	L	M
Srayri	M	L	M	Taaid	M	L	ML	Wadi Jezzine	M	L	M
Zhalta	M	L	M								

Bekaa

West Bekaa

Municipality	20-Jan	21-Jan	22-Jan	Municipality	20-Jan	21-Jan	22-Jan	Municipality	20-Jan	21-Jan	22-Jan
Aammiq BG	M	M	M	Ain El Tineh BG	M	L	M	Ain Zebdeh	M	M	M
Ana	M	M	M	Aytanit	M	M	M	Baaloul BG	M	M	M
Bab Mareh	M	M	M	Chouberqiye Aammiq	M	M	M	Dakoue	M	M	M
Deir Ain El-Jaouze	M	M	M	Deir Tahniche	M	M	M	Ghaza	M	M	M
Harime El-Soughra	M	M	M	Hoch Harimeh	M	M	M	Jazira BG	M	M	M
Jib Jennine	M	M	M	Kamed-El-Laouz	M	M	M	Kefraya BG	M	M	M
Khiara El Atika	M	M	M	Khiara	M	M	M	Khirbet Qanafar	M	M	M
Lala	M	M	M	Lebbaya BG	M	ML	M	Loussa	M	L	M
Machghara	M	ML	M	Manara (Hammara) BG	M	M	M	Mansoura BG	M	M	M
Marej BG	M	M	M	Maydoun	M	L	M	Ouaqf BG	M	M	M
Qaraaoun	M	M	M	Qelya	M	L	M	Raouda (Istabel)	M	M	M
Saghbine	M	M	M	Sohmor	M	L	M	Soltan Yacoub el Ara	M	M	M
Souairy	M	M	M	Sultan Yaacoub	M	M	M	Tal Znoun	M	M	M
Yehmor BG	M	L	M	Zilaya	M	L	M				

Zahle

Municipality	20-Jan	21-Jan	22-Jan	Municipality	20-Jan	21-Jan	22-Jan	Municipality	20-Jan	21-Jan	22-Jan
Aanjar (Haouch Mouss	M	M	M	Ablah	M	M	M	Ain Kfarzabad	M	M	M
Ali-El-Nahri	M	M	M	Bar Elias	M	M	M	Bouarej	M	M	M
Cheberqiyet Tabet	M	M	M	Chtaura	M	M	M	Deir El Ghazal	M	ML	M
Delhamiyet Zahle	M	M	M	Ferzol	M	M	M	Haouch El-Ghanam	M	M	M
Haouch Es-Siyadeh	M	M	M	Haouch Hala	M	M	M	Haouch Mandara	M	M	M

Haouch Qayssar	M	M	M	Hezerta	ML	L	M	Hosh Moussa	M	M	M
Jdita	M	M	M	Kfarzabad	M	M	M	Ksara	M	M	M
Majdel Aanjar	M	M	M	Makssi	M	M	M	Massa	M	M	M
Mazraat Er-Remtaniye	M	ML	M	Mrayjat Zahle	M	ML	M	Mzaraa Zahle	M	M	M
Nabi Ayla	M	M	M	Nasriyet Rizk	M	M	M	Nasriyet Zahle	M	M	M
Niha Zahle	M	M	M	Ouadi Ed-Deloum	ML	L	M	Ouadi El-Arayech	M	M	M
Qaa El Rim	ML	ML	M	Qab Elias	M	M	M	Qousaya	M	M	M
Rhit	M	M	M	Riyak	M	M	M	Saadnayel	M	M	M
Taal El-Akhdar	M	M	M	Taalbeya	M	M	M	Taanayel	M	M	M
Talamara	M	M	M	Tcheflik Edde Haouch	M	M	M	Tcheflik Qiqano	M	M	M
Terbol Zahle	M	M	M	Touaite Zahle	ML	ML	M	Zahle Aradi	ML	M	M
Zahle El-Berbara	M	M	M	Zahle El-Maallaqa	M	M	M	Zahle El-Midane	M	M	M
Zahle Er-Rassiye	M	M	M	Zahle Haouch El-Ouma	M	M	M	Zahle Haouch El-Ouma	M	M	M
Zahle Haouch Ez-Zara	M	M	M	Zahle Maalaga Aradi	M	M	M	Zahle Mar Antonios	M	M	M
Zahle Mar Elias	M	M	M	Zahle Mar Gerios	M	M	M	Zahle Saydet En-Naja	M	M	M
Zebdoul	M	M	M								

Rachaiya

Municipality	20-Jan	21-Jan	22-Jan	Municipality	20-Jan	21-Jan	22-Jan	Municipality	20-Jan	21-Jan	22-Jan
Ain Arab Rachaiya	M	M	M	Ain Ata	M	L	M	Ain Harche	M	L	M
Aqabe Rachaya	M	ML	M	Ayha	ML	ML	M	Ayta El Fokhar	M	M	M
Bakifa Rachaya	M	L	M	Bakka	ML	M	M	Beit Lahya	M	L	M
Bireh Rachaiya	M	M	M	Daher El Ahmar	M	ML	M	Deir El-Achayer	M	M	M
Heloua Rachaiya	M	M	M	Hoch El Qannabeh Rac	M	ML	M	Kaoukaba Bou Arab	M	M	M
Kfar Danis	ML	ML	M	Kfar Mechki	M	ML	M	Kfar Qouq	M	M	ML
Kherbet Rouha	M	M	M	Majdel Balhiss	M	M	M	Mdoukha	M	M	M
Mhaydseh Rachaiya	M	M	M	Nabi Safa	M	L	M	Rachaiya	ML	ML	M
Rafid Rachaiya	M	M	M	Selsata (Mazraat Dei	M	M	ML	Tannoura	M	L	M
Yanta	M	M	M								

Beyrouth

Beyrouth

Municipality	20-Jan	21-Jan	22-Jan	Municipality	20-Jan	21-Jan	22-Jan	Municipality	20-Jan	21-Jan	22-Jan
Achrafieh	M	ML	MH	Ain el-Mreisse	M	L	MH	Bachoura	M	ML	MH
Beirut Central Distr	M	ML	MH	Marfai	M	ML	MH	Mazraa	M	ML	MH
Medaouar	M	ML	MH	Minet el-Hosn	M	L	MH	Mwssaitbeh	M	ML	MH
Ras Beirut	M	ML	MH	Rmeil	M	ML	MH	Saifi	M	ML	MH
Zqaq el-Blat	M	ML	MH								



نشرة الطقس الصادرة عن دائرة التقديرات في مصلحة الأرصاد الجوية

النشرة: المسائية

الخميس: ١٩ كانون الثاني ٢٠١٧

الحالة العامة: طقس مستقر على الحوض الشرقي للمتوسط يتحول الى متقلب اعتباراً من ظهر يوم السبت.

الطقس المتوقع في لبنان:

الجمعة: غائم جزئياً دون تعديل يذكر على درجات الحرارة وضباب على المرتفعات.

السبت: غائم جزئياً مع انخفاض بسيط بدرجات الحرارة يتحول بعد الظهر الى غائم مع تساقط أمطار متفرقة تشتد أحياناً خاصة في

المناطق الشمالية كما تتساقط الثلوج بشكل متفرق اعتباراً من ارتفاع 1200 متر.

الأحد: غائم جزئياً مع أمطار خفيفة ومتفرقة وثلوج على ارتفاع 1100 متر خلال الفترة الصباحية وانخفاض اضافي بدرجات الحرارة،

يتحسن الطقس تدريجياً خلال النهار ويتحول الى قليل الغيوم كما نحذر من تكون طبقات من الجليد على الطرقات الجبلية والداخلية ليلاً.

السبت		الجمعة		الخميس		درجات الحرارة المتوقعة	
٨/١٨	٧/١٨	٩/١٩	٨/١٩	٩/١٩	٧/١٩	صور	الساحل
١١/١٧		١٢/١٨		١٢/١٨		بيروت	
٧/١٧		٨/١٨		٧/١٧		طرابلس	
٣/١٠	٢/١٠	٥/١١	٤/١١	٥/١٢	٤/١٢	بيصور	الجبال
٢/٩		٤/١٠		٤/١٠		قرطبا	
٣-/٤		٢-/٥		٢-/٦		الأرز	
٣/١٢	٢/١٢	٣/١٣	٢/١٣	٣/١٣	٢/١٤	القرعون	الداخل
٤/١٢		٥/١٣		٥/١٣		مرجعيون	
٢/١٢		٢/١٣		٢/١٤		زحلة	

الرياح السطحية: جنوبية غربية، سرعتها بين ١٠ و ٢٥ كلم/س.

الانقشاع: متوسط.

الرطوبة النسبية على الساحل: بين ٦٠ و ٨٠ %.

حالة البحر: منخفض ارتفاع الموج.

الضغط الجوي: ١٠٢٠ HPA

ساعة شروق الشمس: ٠٦:٤٢

حرارة سطح الماء: ١٧°م.

أي ما يعادل: ٧٦٥ ملم زئبق

ساعة غروب الشمس: ١٦:٥٧