

Lebanon Fire Risk Bulletin



CIVIL DEDEFENCE

Refer to cadast table condition.

Please note that the indicated temperature is at 2 meters height from the ground.

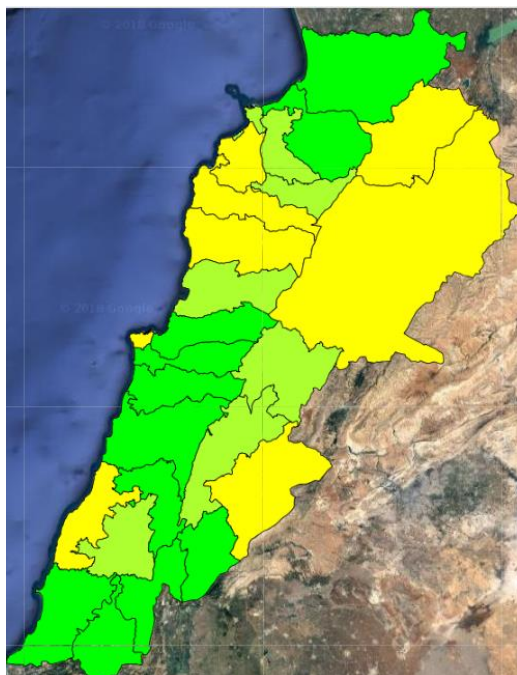
General description of potential fire risk situation

Symbol	Level of risk	Meaning and actions
VL	Very low	Very low fire risk. Controlled burning operations can be hardly executed due to high fuel moisture content. Normally wildfires self-extinguish.
L	Low	Low fire risk. Controlled burning operations can be executed with a reasonable degree of safety.
ML	Medium low	Medium-low fire risk. Controlled burning operations can be executed in safety conditions. All the fires need to be extinguished.
M	Medium	Medium fire risk. Controlled burning operations would be avoided. All the fires need to be very well extinguished.
MH	Medium high	Controlled burning is not recommended. Open flame will start fires. Cured grasslands and forest litter will burn readily. Spread is moderate in forests and fast in exposed areas. Patrolling and monitoring is suggested. Fight fires with direct attack and all available resources.
H	High	Ignition can occur easily with fast spread in grass, shrubs and forests. Fires will be very hot with crowning and short to medium spotting. Direct attack on the head may not be possible requiring indirect methods on flanks. Patrolling and monitoring the territory is highly suggested.
E	Extreme	Ignition can occur also from sparks. Fires will be extremely hot with fast rate of spread. Control may not be possible during day due to long range spotting and crowning. Suppression forces should limit efforts to limiting lateral spread. Damage potential total. Patrolling and monitoring the territory is highly suggested.

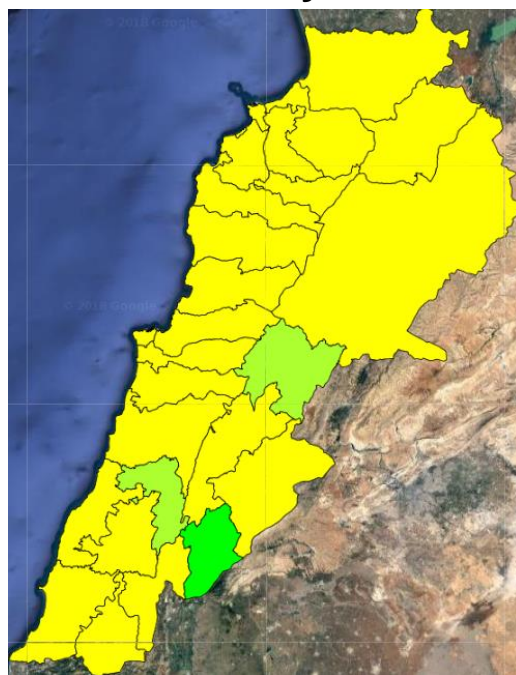
Beirut, 20 January 2019

FIRE RISK INDEX

19 January 2019



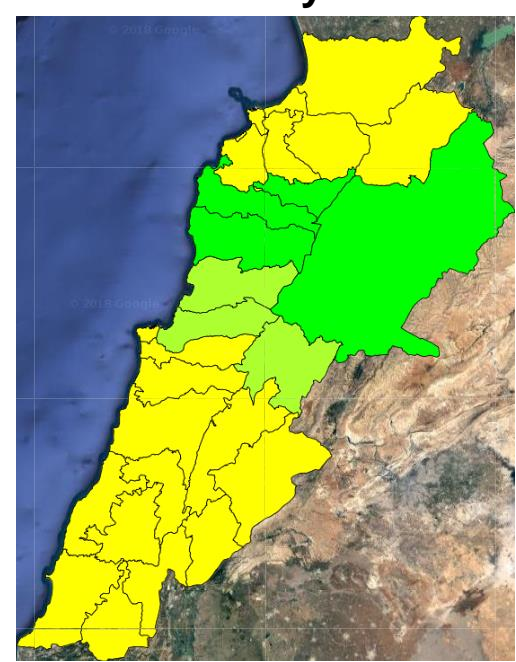
20 January 2019



21 January 2019



22 January 2019

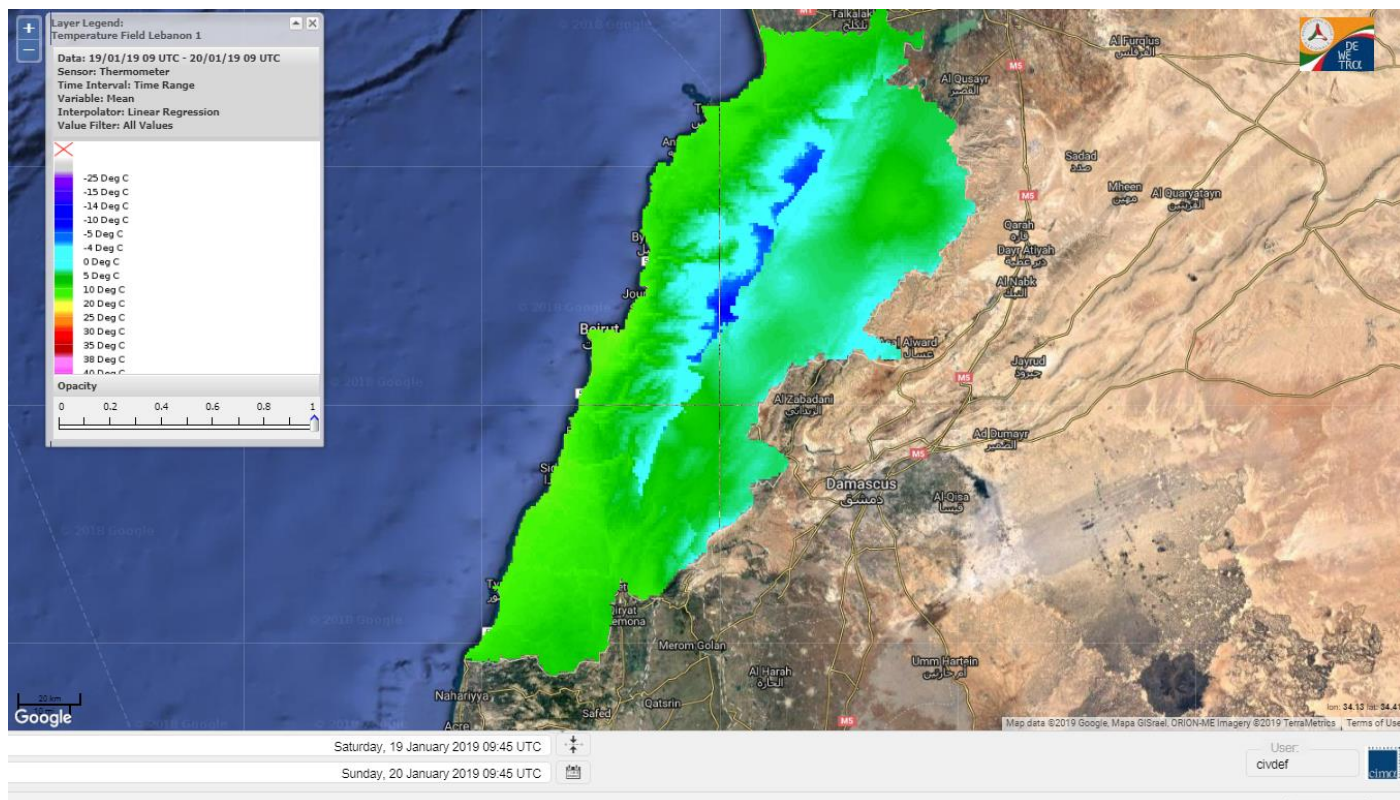


Layer Legend:
Lebanon Wildfire Risk Index 1

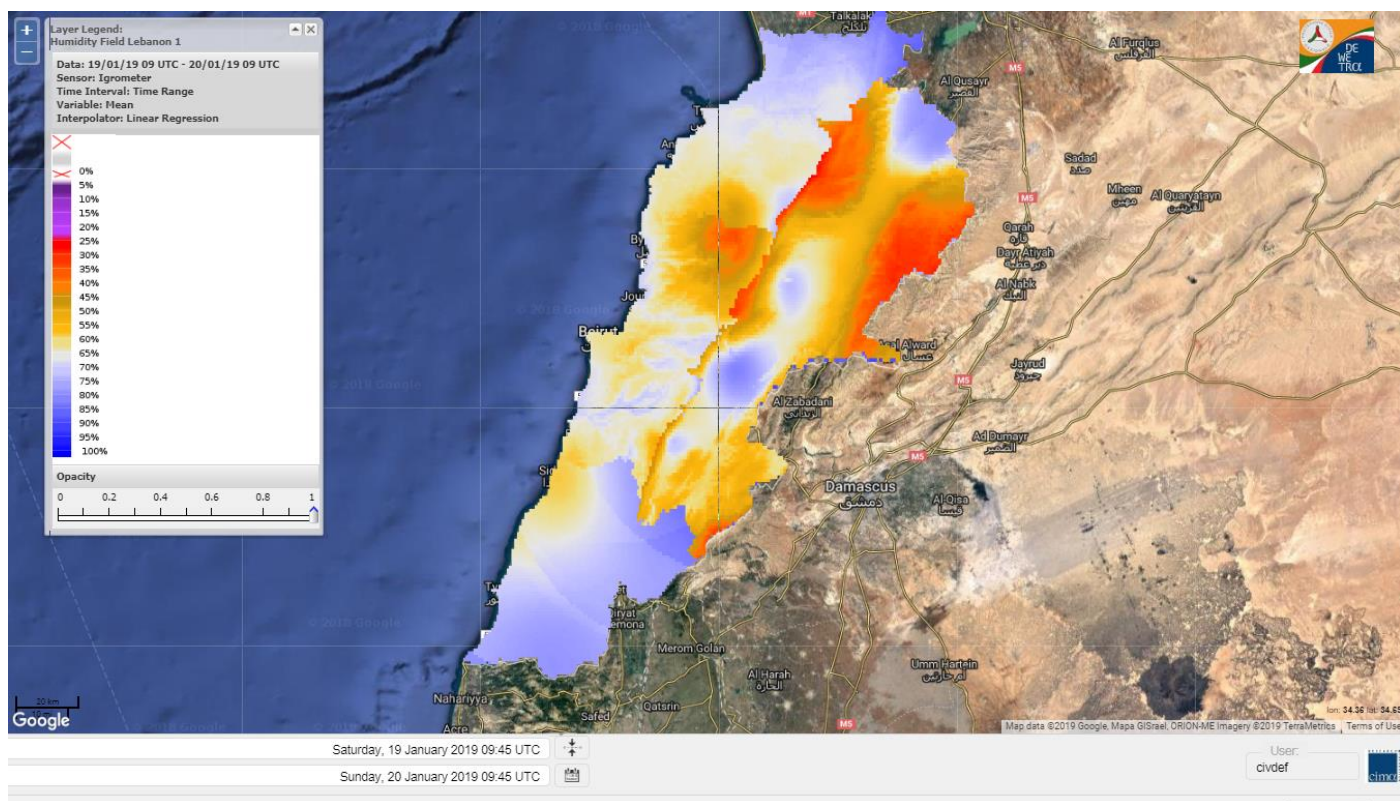
Data: Run: 20/01/2019 00:00. Forecast for 20
Model: RISICO for the Republic of Lebanon
Variable: Fire Weather Index
Spatial Resolution: Caza

- VERY LOW
- LOW
- MEDIUM-LOW
- MEDIUM
- MEDIUM-HIGH
- HIGH
- EXTREME

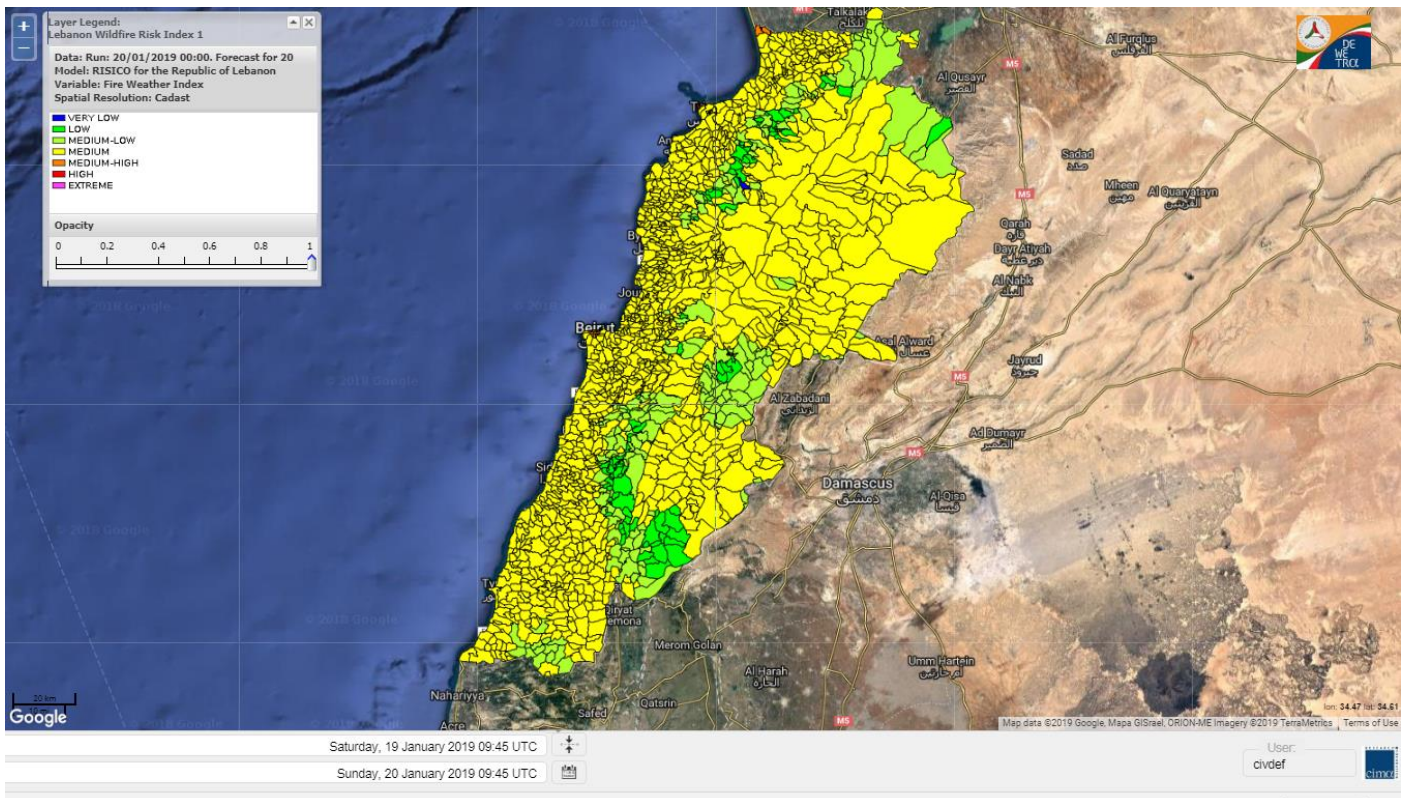
Lebanon temperature for 20 January 2019



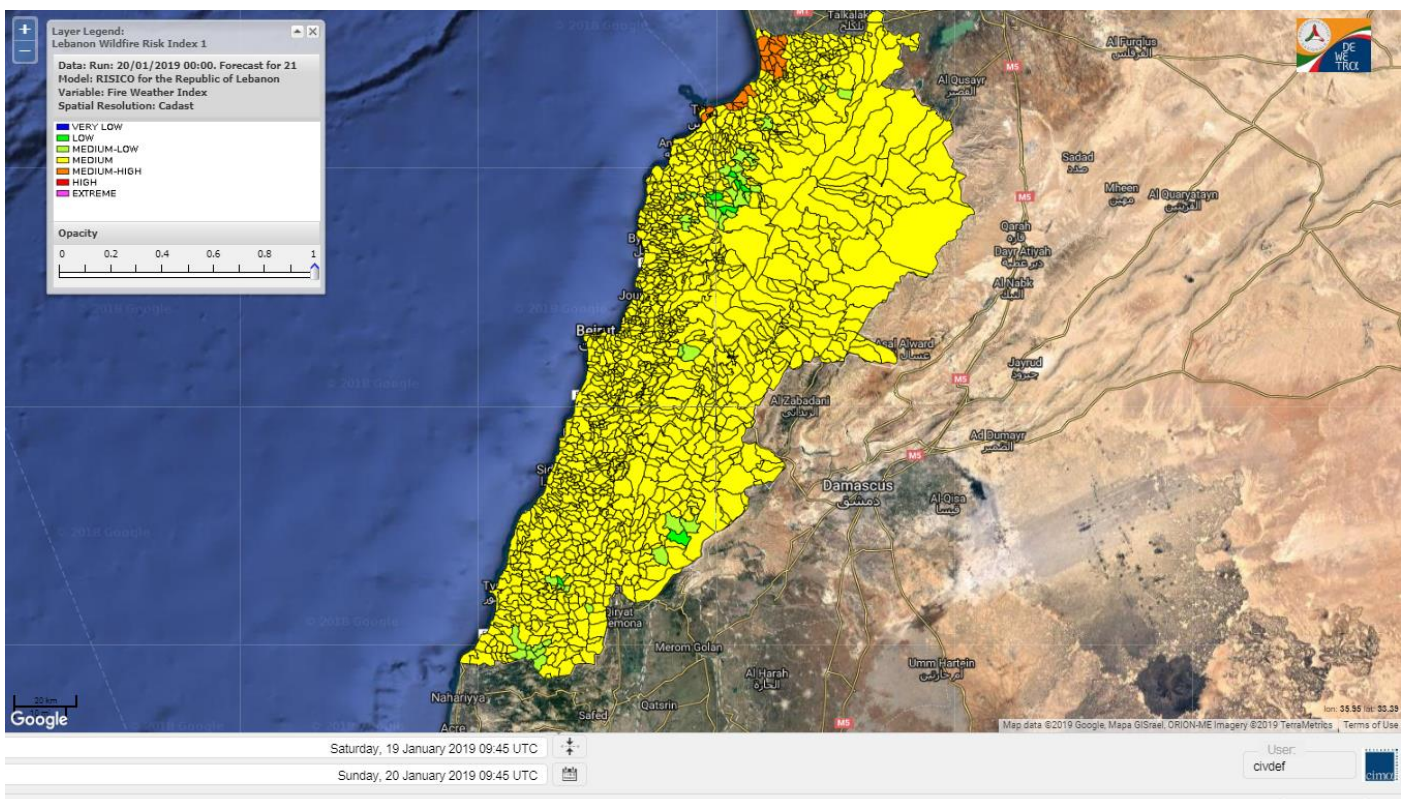
Lebanon humidity for 20 January 2019



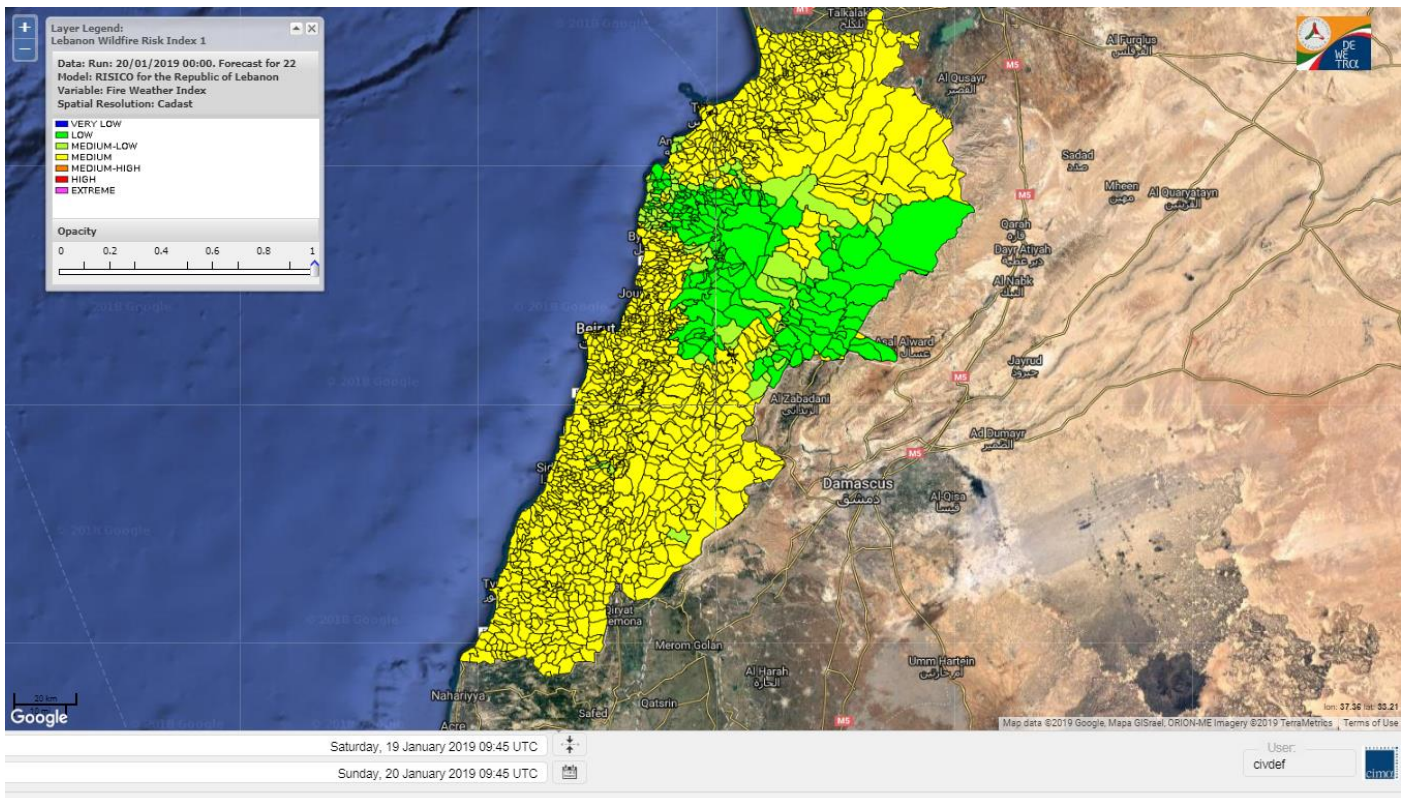
Lebanon for 20 January 2019



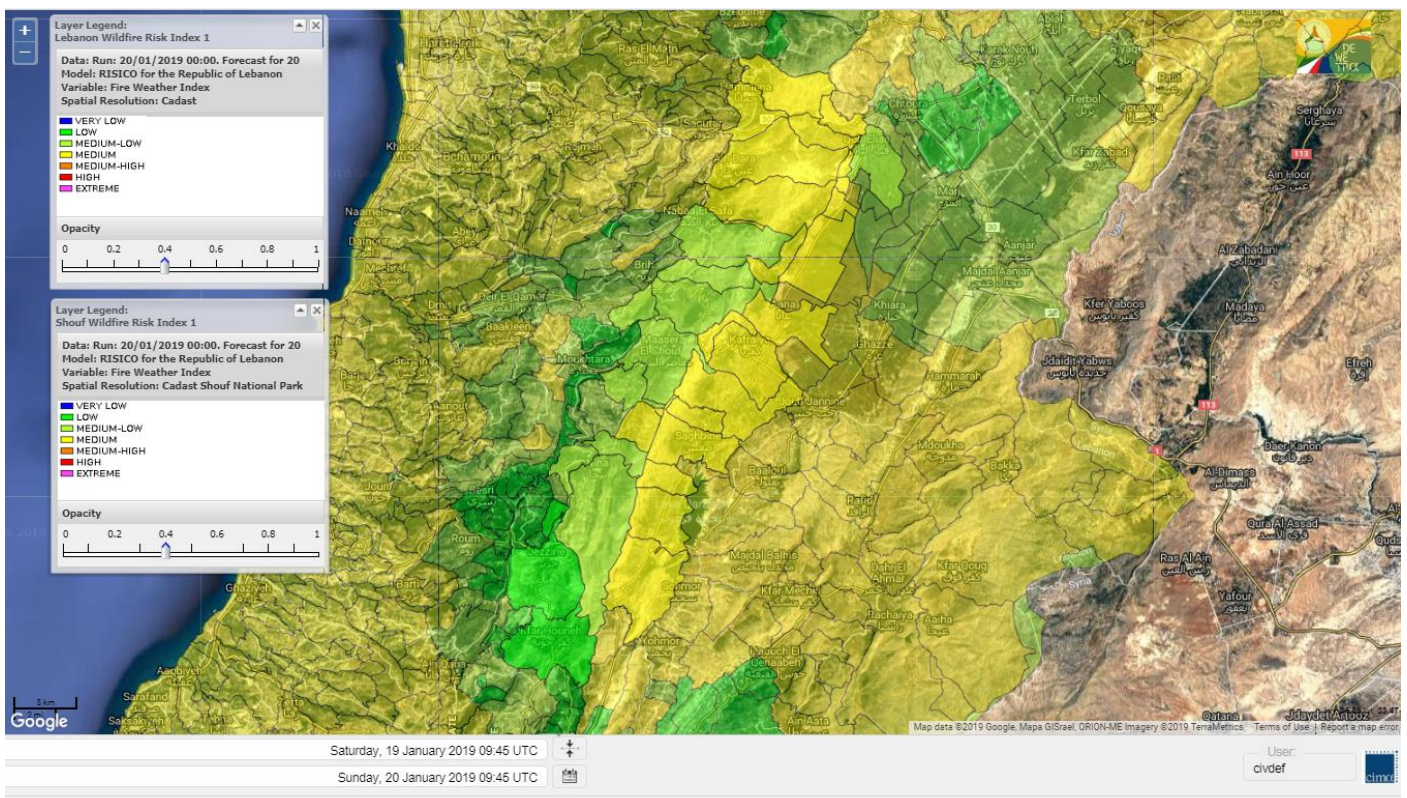
Lebanon for 21 January 2019



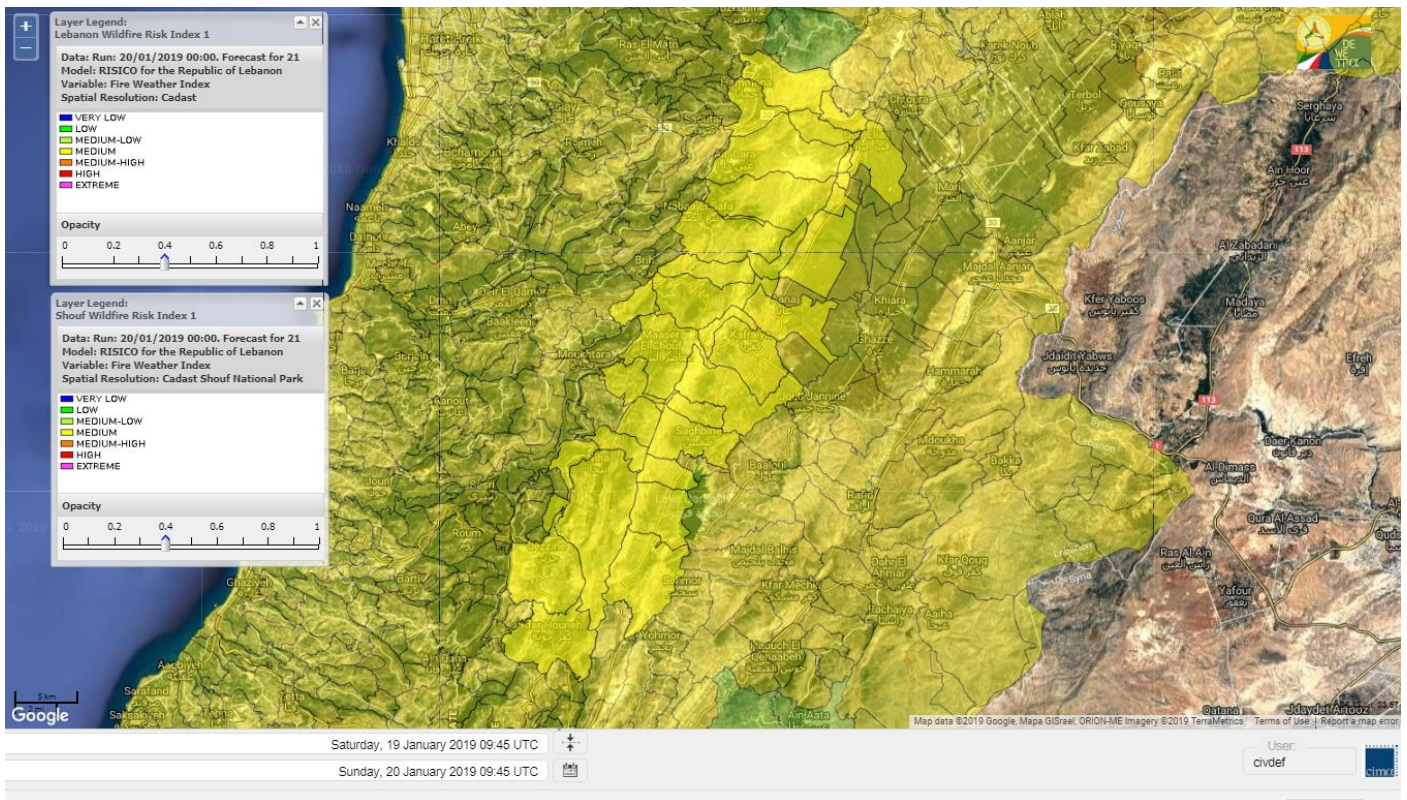
Lebanon for 22 January 2019



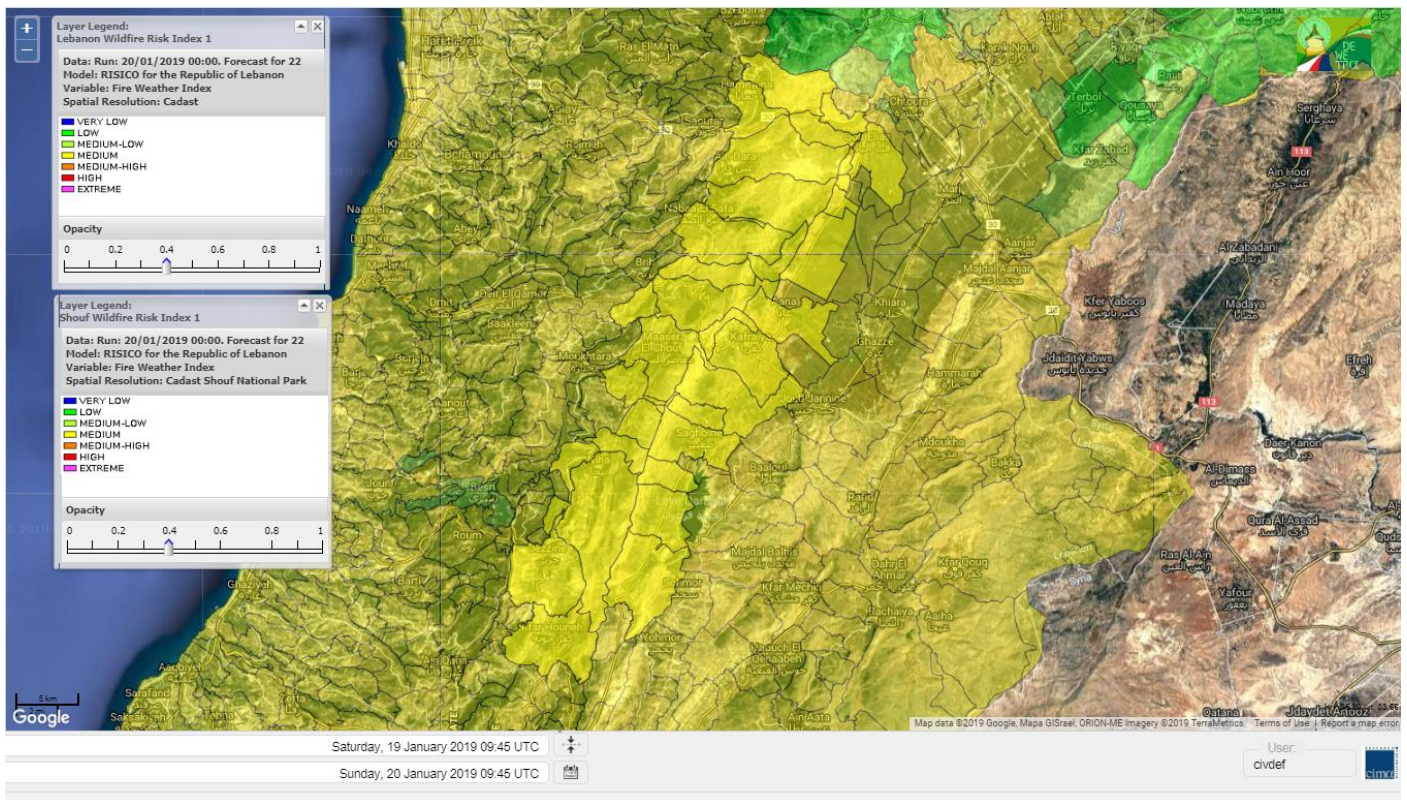
Shouf Biosphere Reserve Forecast for 20 January 2019



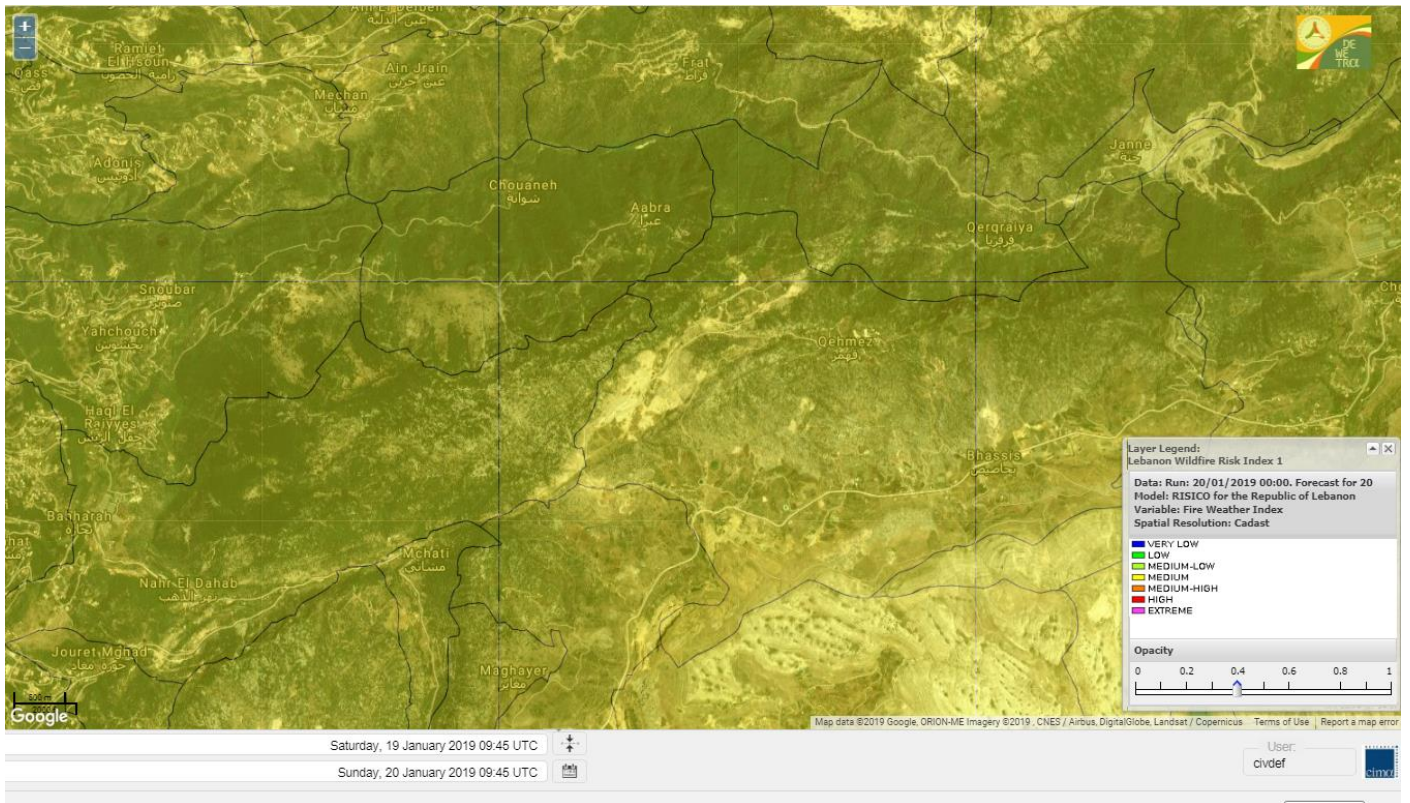
Shouf Biosphere Reserve Forecast for 21 January 2019



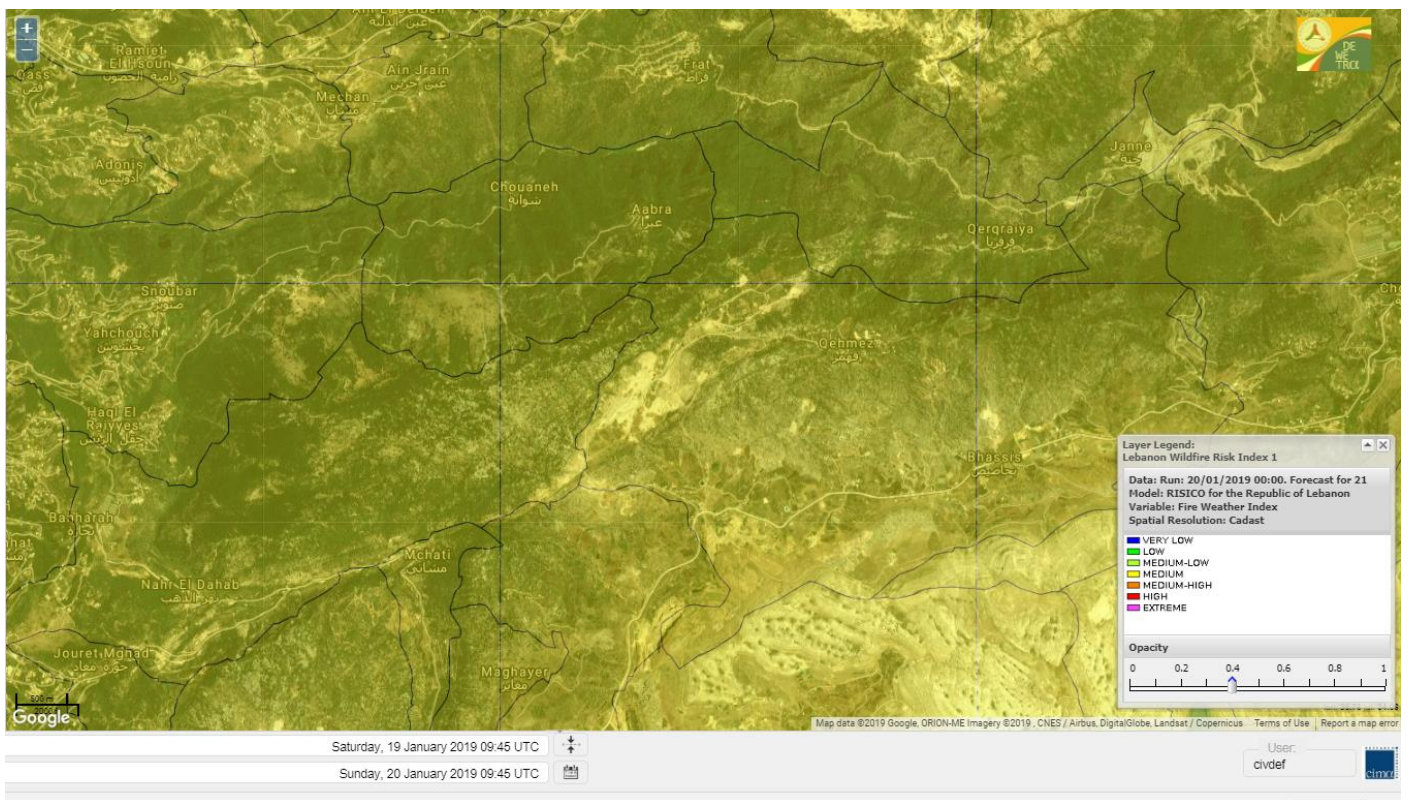
Shouf Biosphere Reserve Forecast for 22 January 2019



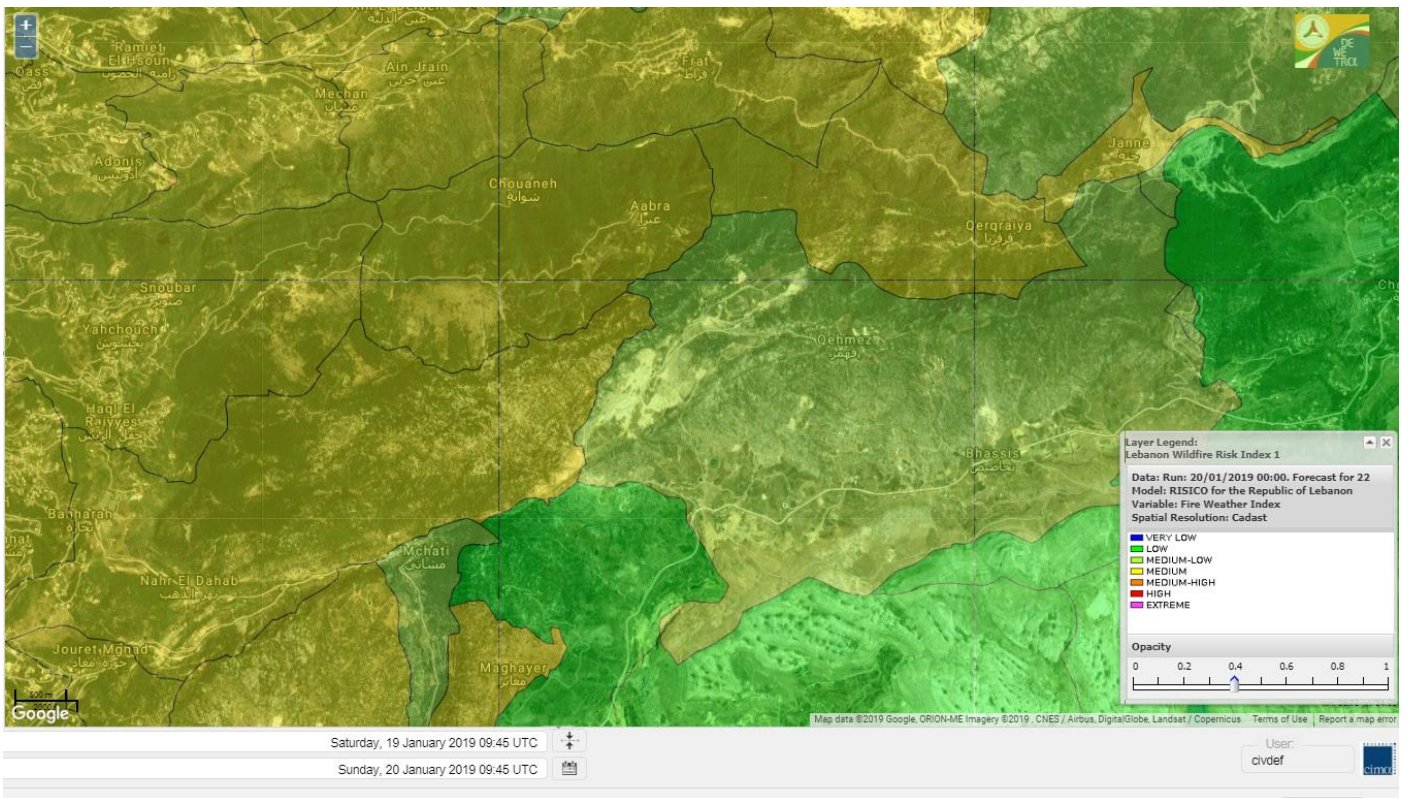
Jabal Moussa Reserve Forecast for 20 January 2019



Jabal Moussa Reserve Forecast for 21 January 2019



Jabal Moussa Reserve Forecast for 22 January 2019

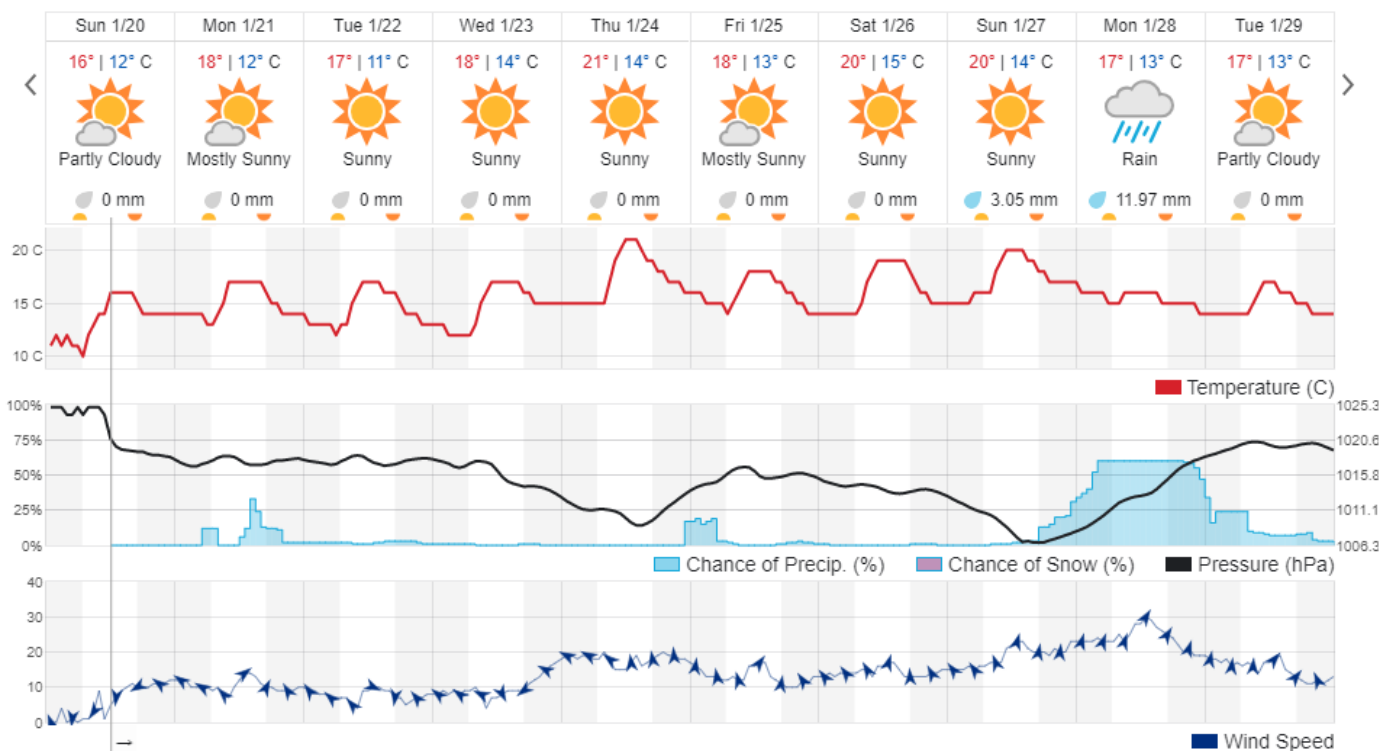


Beirut, Lebanon

16° ACHRAFIEH, RIZK STATION | REPORT | CHANGE

TODAY HOURLY 10-DAY CALENDAR HISTORY WUNDERMAP

Customize



Nord

Koura

Municipality	20-Jan	21-Jan	22-Jan	Municipality	20-Jan	21-Jan	22-Jan	Municipality	20-Jan	21-Jan	22-Jan
Aaba	M	M	M	Afsaddiq	M	M	M	Ain Ekriane	M	M	M
Amioun	M	M	M	Anfeh	M	M	ML	Badbhoun	M	M	M
Barghoun	M	M	M	Barsa	M	M	M	Batroumine	M	M	M
Bdebba	M	M	M	Bechmizzine	M	M	M	Bednaye El-Koura	M	M	ML
Bhabbouch El-Koura	M	M	M	Bkeftine	M	M	M	Bnehran	M	M	ML
Bqaiia El-Koura	M	M	M	Bsarma	M	M	M	Btaaboura	M	M	M
Bterram	M	M	M	Btouratij	M	M	M	Bziza	M	M	M
Dar Beechtar	M	M	M	Dar Chmezzine	M	M	M	Deddeh	M	M	M
Deir El-Balamand	M	M	M	Fih	M	M	M	Hraiche	M	M	ML
Ijdaabrine	M	M	ML	Kaftoun	M	M	M	Kefraya El-Koura	M	M	M
Kfarakka	M	M	M	Kfarhata	M	M	ML	Kfarhazir	M	M	M
Kfarkahel	M	M	M	Kfarsaroun	M	M	M	Kosba	M	M	M
Mejdel el-Koura	M	M	ML	Nakhle	M	M	M	Qalhat	M	M	M
Ras Masqa	M	M	M	Rechdibbine	M	M	M	Zakroun	M	M	ML
Zgharta El-Mtaouile	M	M	L								

Bcharre

Municipality	20-Jan	21-Jan	22-Jan	Municipality	20-Jan	21-Jan	22-Jan	Municipality	20-Jan	21-Jan	22-Jan
Aabdine	ML	M	M	Bane	M	M	M	Barhelioun	ML	M	M
Bazooune	M	M	L	Becharre	M	M	ML	Beit Menzer	ML	M	M
Billa	M	M	M	Blaouza	M	M	M	Bqaa Kafra	M	M	L
Bqerqacha	M	M	L	Breissat	M	ML	L	Dimane	M	ML	L
Hadath El Jobbeh	ML	ML	L	Hadchit	ML	ML	ML	Hasroun	M	M	L
Mazraat Aassaf	L	ML	L	Mazraat Bani Saab	ML	M	L	Mchaa El-Jobbeh	M	M	VL
Metrit	M	M	ML	Moghr El-Ahoual	M	M	M	Ouadi Qannoubine	VL	L	L
Qanat	ML	ML	L	Qnayer	L	L	ML	Tourza	ML	ML	M

Batroun

Municipality	20-Jan	21-Jan	22-Jan	Municipality	20-Jan	21-Jan	22-Jan	Municipality	20-Jan	21-Jan	22-Jan
Aabrine	M	M	L	Aalali	M	M	L	Aartiz	M	ML	L
Abdelli	M	M	L	Ajdabra	M	M	L	Assia	M	M	L
Basbina	M	M	M	Batroun	M	M	ML	Bcheleh	ML	M	L
Bechtoudar	ML	M	L	Beit Chlala	ML	ML	L	Beit Kassab	L	ML	L
Bijdarfil	M	M	ML	Bqesmaya	M	M	L	Chatine	M	ML	L
Chebtin	M	M	L	Chekka	M	M	M	Daael	ML	ML	L
Dahr Abi Yaghi	M	M	L	Daraya El-Batroun	M	M	M	Deir Billa	M	M	L
Deir Kfifane	M	M	ML	Deir Mar Youhanna EL	L	ML	L	Deir Mar Youssef Jra	M	M	L
Douma	M	ML	L	Douq	M	M	L	Eddeh El-Batroun	M	M	ML
Ftihat El-Batroun	M	ML	L	Ghouma	M	M	ML	Hadtoun	ML	M	L
Hamat	M	M	L	Harbouna	M	M	L	Hardine	L	L	L
Helta	M	M	L	Hery	M	M	M	Jebbla	M	ML	L
Jrabta El-Batroun	M	M	ML	Jrane El-Batroun	M	M	M	Kfar Aabida	M	M	ML
Kfar Halda	L	ML	L	Kfarb Shlaimane	M	M	L	Kfarhatna	M	M	L
Kfarhay	M	M	ML	Kfarhelos	M	M	L	Kfifane	M	M	M

Kfour El Arabi	M	ML	L	Koubba	M	M	ML	Kour	M	M	ML
Mar Mama	ML	ML	L	Masrah	M	M	L	Mehmarch	M	M	L
Mrah Chdid	M	M	L	Mrah El Ziyat	M	M	ML	Mrah El-Hajj	ML	M	L
Nahle El-Batroun	ML	M	L	Niha El-Batroun	M	M	L	Ouajh El-Hajjar	M	M	L
Ouata Houb	ML	ML	L	Qatnaaoun	M	M	L	Racha	M	M	L
Rachana	M	M	L	Rachkida	M	M	L	Ram El-Batroun	ML	M	L
Ras Nahhach	M	M	L	Selaata	M	M	ML	Sghar	M	M	ML
Smar Jbayl	M	M	ML	Sourat El-Batroun	M	ML	L	Tannourine El-Faouqa	M	M	L
Tannourine Et-Tahta	L	L	L	Thoum	M	M	ML	Toula El-Batroun	M	M	L
Zan	M	M	L								

Zgharta

Municipality	20-Jan	21-Jan	22-Jan	Municipality	20-Jan	21-Jan	22-Jan	Municipality	20-Jan	21-Jan	22-Jan
Aachach	M	M	M	Aalma	M	M	M	Aarde	M	M	M
Aintourine	M	M	M	Arabet Qozhaya	L	ML	ML	Arde	M	M	M
Arjis	M	M	M	Asnoun	M	M	M	Ayto	L	ML	ML
Basloukit	M	M	M	Bchannine	M	M	M	Besebeel	M	M	M
Bhairret Toula	L	M	M	Bnachee	M	M	M	Boussit	M	M	M
Danha	M	M	M	Daraiya Zgharta	M	M	M	Deir Jdeide	M	M	M
Ehden	M	M	M	Halan	M	M	M	Hariq Zgharta	M	M	M
Houakir	L	M	M	Hraiqis	M	MH	M	laal	M	M	M
Ijbaa	ML	M	M	Karm Saddeh	ML	ML	ML	Kfarchakhna	M	M	M
Kfardlaqous	M	M	M	Kfarfou	M	M	M	Kfarhata Zgharta	M	M	M
Kfarhoura	M	M	M	Kfarsghab	M	M	M	Kfaryachit	M	M	M
Kfarzaina	M	M	M	Khaldiye	M	M	M	Mazraat Ajbeaa	M	M	M
Mazraat Et-Teffah	L	M	M	Mazraat Jneid	M	M	M	Mejdlaiya Zgharta	M	M	M
Merh Kfarsghab	M	M	M	Miryata	M	M	M	Miziara	L	ML	M
Mzraat Kefraya	M	M	M	Qorah Bach	M	M	M	Rachiine	M	M	M
Ras Kifa	M	M	M	Sakhra	ML	M	M	Sebhel Zgharta	M	M	M
Serhel	L	L	L	Tallet Zgharta	M	M	M	Toula Zgharta	L	ML	M
Zgharta	M	M	M								

Minieh-Denniye

Municipality	20-Jan	21-Jan	22-Jan	Municipality	20-Jan	21-Jan	22-Jan	Municipality	20-Jan	21-Jan	22-Jan
Aasaymout	L	M	M	Aaymar	ML	M	M	Aazki	ML	M	M
Ain El-Tineh-Miniyeh	L	M	M	Assoun	ML	M	M	Bakhaaoun	ML	ML	M
Bchennata	M	M	M	Bechehhara	L	M	M	Beddawi	M	M	M
Behouaita	ML	ML	M	Beit El Foqss	L	M	M	Beit Haouik	M	M	M
Beit Zoud	L	M	M	Bekaasafrine	M	M	M	Borj El Yahoudiyeh	M	MH	M
Bqarsouna	L	M	M	Btermaz	L	M	M	Debaael	L	M	M
Deir Ammar	M	MH	M	Deir Nbouh	ML	M	M	Haouaret-Miniyeh	ML	M	M
Haql el Azimeh	L	M	M	Harf El Siyad	L	ML	ML	Hazmiye-Miniyeh	L	M	M
Izal	M	M	M	Jarjour	L	ML	M	Jayroun	M	M	M
Kahf El-Malloul	L	ML	M	Karm El-Moher	ML	M	M	Kfar Binine	M	M	M
Kfarchalane	ML	ML	M	Kfarhabou	ML	M	M	Kharroub-Miniyeh	ML	M	M
Mazraat El-Kreme	L	M	M	Mazraat Ketrane	ML	M	M	Merkebta	M	M	M
Minyeh	M	MH	M	Mrah El Sfirat	L	M	M	Mrah Sraj	L	M	M
Mrebbine	M	M	M	Nabi Youcheaa	M	MH	M	Nemrine	M	M	M

Qarhaiya	ML	M	M	Qarne	ML	M	M	Qarsita	L	M	M
Qattineh-Miniyeh	L	M	M	Qemmamine	M	M	M	Qraine	L	M	M
Raouda-Aadoua	M	M	M	Rihaniyet-Miniyeh	M	M	M	Sfireh	ML	M	M
Sir Ed-Danniyeh	L	M	M	Tarane	L	M	M	Terbol-Miniyeh	M	M	M
Zaghartaghriane	M	M	M	Zouq Bhannine	M	MH	M				

Nabatiye

Nabatiye

Municipality	20-Jan	21-Jan	22-Jan	Municipality	20-Jan	21-Jan	22-Jan	Municipality	20-Jan	21-Jan	22-Jan
Aabba	M	M	M	Aazzi	M	M	M	Adchit El-Chqif	M	M	M
Ain Bou Swar	M	M	M	Ain Kana	M	M	M	Ali El-TaHER	M	M	M
Ansar	M	M	M	Arab Salim	M	M	M	Arnoun	M	M	M
Bfaroue	M	M	M	Breyqaah	M	M	M	Charqiyeh	M	M	M
Choukine	M	M	M	Deir El Zahrani	M	M	M	Doueir El-Nabatiyeh	M	M	M
Habbouch El-Nabatiye	M	M	M	Hamra El-Nabatiyeh	M	M	M	Harouf El-Nabatiyeh	M	M	M
Hmaile	M	M	M	Houmin El Faouqa	M	M	M	Houmin El Tahta	M	M	M
Jarjough	M	M	M	Jbaah El-Nabatiyeh	ML	M	M	Jebchit	M	M	M
Kfar Djal El-Nabatiy	M	M	M	Kfar Remmane	M	M	M	Kfar Sir	M	M	M
Kfar Tebnit	M	M	M	Kfarfila	M	M	M	Kfour El-Nabatieh	M	M	M
Mayfadoun	M	M	M	Mazraat Bsaffour	M	M	M	Mazraat Chalbaal	M	M	M
Mazraat Dmoul	M	M	M	Mazraat El Khreibeh	M	M	M	Mazraat El-Bayad El-	M	M	M
Mazraat Kfarjaouz	M	M	M	Mazraat Qalaat Meiss	M	M	M	Nabatiyeh El-Fawka	M	M	M
Nabatiyeh Et-Tahta	M	M	M	Namiriyyeh	M	M	M	Qaaqaaiyet El Jisr	M	M	M
Qossaibeh El-Nabatiy	M	M	M	Roumine	M	M	M	Sarba El-Nabatieh	M	M	M
Sir El-Gharbiyeh	M	M	M	Toul	M	M	M	Yehmor El-Nabatiyeh	M	M	M
Zaoutar El Charkiyeh	M	M	M	Zaoutar El-Gharbiyeh	M	M	M	Zebdine El-Nabatiyeh	M	M	M
Zefta	M	M	M								

Hasbaiya

Municipality	20-Jan	21-Jan	22-Jan	Municipality	20-Jan	21-Jan	22-Jan	Municipality	20-Jan	21-Jan	22-Jan
Ain Jarfa	L	M	M	Abou Qamha	L	M	M	Ain Qania	L	M	M
Bourghos	ML	M	M	Chebaa	L	M	M	Chouaya Hasbaya	L	M	M
Dellafeh	ML	M	M	Fardiss Hasbaiya	ML	M	M	Hasbaya	L	M	M
Hbariyeh	L	ML	M	Kaoukaba Hasbaiya	ML	M	M	Kfar Chouba	L	M	M
Kfar Hamam	L	M	M	Kfeir El-Zait	L	ML	M	Khalwat Hasbaya	L	L	ML
Khreibet Hasbaiya	ML	M	M	Majidiyeh Hasbaiya	ML	M	M	Marj Ez-Zhour (Haouc	L	M	M
Meri	ML	M	M	Mimass	L	M	M	Rachaiya El-Fokhar	L	M	M
Salaiyeb	M	M	M								

Marjayoun

Municipality	20-Jan	21-Jan	22-Jan	Municipality	20-Jan	21-Jan	22-Jan	Municipality	20-Jan	21-Jan	22-Jan
Aalmane Marjaayoun	M	M	M	Aamra	M	M	M	Adayseh Marjaayoun	M	M	M
Adchit El-Koussair	M	M	M	Ain Arab Marjaayoun	ML	M	M	Bani Haiyann	M	M	M
Blatt Marjaayoun	ML	M	M	Blida	M	M	M	Borj El-Moulouk	M	M	M
Boueyda Marjaayoun	ML	M	M	Deir Mimass	M	M	M	Deir Siriane	M	M	M
Dibbine	ML	M	M	Ebel El Saqi	ML	M	M	Houla	M	M	M
Houra	M	M	M	Kfar Kila	M	M	M	Khiam Marjaayoun	ML	M	M

Klayaa	ML	M	M	Majdel Selem	M	M	M	Marjaayoun	ML	M	M
Markaba	M	M	M	Mays El-Jabal	M	M	M	Mazraat Doumiat	M	M	M
Mazraat Sarada	M	M	M	Mhaibib	M	M	M	Qabrikha	M	M	M
Qantara	M	M	M	Rab El-Thalathine	M	M	M	Saouaneh Marjayoun	M	M	M
Talloussa	M	ML	M	Taybeh Matjaayoun	M	M	M	Touline	M	M	M

Bent Jbail

Municipality	20-Jan	21-Jan	22-Jan	Municipality	20-Jan	21-Jan	22-Jan	Municipality	20-Jan	21-Jan	22-Jan
Ain-Ebel	ML	M	M	Aitaroun	M	M	M	Aynata Bint Jbeil	M	M	M
Ayta El-Chaeb	ML	ML	M	Ayta El-Jabal	M	M	M	Beit Lif	ML	ML	M
Beit Yahoun	M	M	M	Bint Jbeil	M	M	M	Borj Qalaway	M	M	M
Braachit	M	M	M	Chakra	M	M	M	Debel	ML	M	M
Deir Antar	M	M	M	Froun	M	M	M	Ghandouriyeh Bint Jb	M	M	M
Hanine	ML	M	M	Hariss	M	M	M	Hdatha	M	M	M
Jmeymeh	M	M	M	Kafra Bint Jbeil	ML	M	M	Kfar Dounine	M	M	M
Khirbet Selm	M	M	M	Kounine	M	M	M	Maroun El Ras	M	M	M
Qalaway	M	M	M	Qaouzah	ML	ML	M	Qatmoun	M	M	M
Ramya Bint Jbeil	ML	ML	M	Rchaf	ML	ML	M	Rmeich	M	M	M
Safad Al Battikh	M	M	M	Salhaneh	ML	ML	M	Serbine	M	M	M
Sultanieh Bint Jbeil	M	M	M	Tibnine	M	M	M	Tiri	ML	M	M
Yaroun	ML	M	M	Yater	M	M	M				

Mont Liban

Jbail

Municipality	20-Jan	21-Jan	22-Jan	Municipality	20-Jan	21-Jan	22-Jan	Municipality	20-Jan	21-Jan	22-Jan
Aabeydat	M	M	L	Aalita	M	M	M	Aamchit	M	M	M
Aarab El-Lahib	M	M	L	Aarasta	M	M	ML	Adonis Jbeil	M	M	M
Afqa Jbeil	M	M	L	Ain El Delbeh Jbeil	M	M	M	Ain El-Ghouyba	M	M	ML
Ain Jrain	M	M	M	Ain Kfah	M	M	ML	Almat El Chemaliyat	M	M	ML
Almat El-Jenoubiya	M	M	ML	Aqoura	M	M	L	Bayzoun	M	M	M
Bchille Jbeil	M	M	M	Bechtida	M	M	M	Behdaydat	M	M	ML
Beit Habbaq	M	M	ML	Bejjeh	M	M	ML	Bekhaaz	M	M	ML
Berbara Jbeil	M	M	ML	Bintael	M	M	M	Birket Hjoula	M	M	ML
Blatt Jbeil	M	M	M	Boulhos	M	M	M	Breyj Jbeil	M	M	M
Chamat	M	M	M	Chikhane	M	M	ML	Chmout	M	M	L
Eddeh Jbeil	M	M	M	Ehmej	M	M	L	Fatre	M	M	M
Ferhet	M	M	ML	Fghal	M	M	L	Frat	M	M	M
Ghabat	M	M	L	Ghalboun	M	M	ML	Gharzouz	M	M	ML
Ghofrine	M	M	ML	Habil	M	ML	L	Halate	M	M	M
Haqel	M	M	L	Hbaline	M	M	ML	Hboub	M	M	M
Hdeine	M	M	L	Hema Er-Rehban	M	M	L	Hema Mar Maroun Aann	M	M	L
Hjoula	M	M	M	Hosrayel	M	M	ML	Hsarat	M	M	ML
Hsoun	M	M	M	Jaj	M	M	L	Janne	M	M	M
Jbeil	M	M	M	Jeddeyel Jbeil	M	M	M	Jlisse	M	M	M
Jouret El-Qattine	M	M	M	Kfar Baal Annaya	M	M	M	Kfar Kidde	M	M	ML
Kfar Kouas	M	M	M	Kfar Mashoun	M	M	M	Kfoun	M	M	L

Kharbe Jbeil	M	M	ML	Laqlouq	M	M	L	Lassa	M	M	L
Lehfed	ML	ML	L	Maad	M	M	ML	Mar Sarkis	M	M	L
Mastita	M	M	M	Mayfouq	ML	ML	L	Mazraat El Siyad	M	M	L
Mazraat El-Maaden	M	M	M	Mechane	M	M	M	Mechmech Jbeil	M	M	L
Mehrin	M	M	M	Mejdel El-Akoura	M	M	L	Mghayreh Jbeil	M	M	L
Mounsef	M	M	ML	Nahr Ibrahim	M	M	M	Qahmez	M	M	ML
Qartaba	M	M	ML	Qartaboun	M	M	M	Qattara Jbeil	L	ML	L
Qorqraya	M	M	M	Ramout	M	M	ML	Ras Osta	M	M	M
Rihane Jbeil	M	M	M	Sakiet El-Khayt	M	M	L	Saqi Richmaya	M	M	L
Sebrine	M	M	M	Seraita	M	M	L	Souane Jbeil	M	M	ML
Tadmor	M	M	L	Tartej	M	M	L	Torzaiya	M	M	M
Yanouh Jbeil	M	M	L	Zibidine Jbeil	M	M	M				

El Metn

Municipality	20-Jan	21-Jan	22-Jan	Municipality	20-Jan	21-Jan	22-Jan	Municipality	20-Jan	21-Jan	22-Jan
Aain El-Qabu	L	M	M	Aain El-Qach	M	M	M	Aain El-Teffaha	M	M	M
Aain el-Safssaf El-M	M	M	M	Abou Mizane	M	M	M	Ain Aar	M	M	M
Ain Alaq	M	M	M	Ain El-Kharroube	M	M	M	Ain El-Sendiane	M	M	M
Ain El-Zeitoune	ML	M	M	Ain Saadeh	M	M	M	Aintoura El-Matn	M	M	L
Amaret Chalhoub	M	M	M	Antelias	M	M	M	Atchaneh	M	M	M
Ayroun	M	M	M	Baabdat	M	M	M	Baouchariyeh	M	M	M
Baskinta	ML	M	L	Beit Chabab	M	M	M	Beit El-Char	M	M	M
Beit El-Kekko	M	M	M	Beit Mery	M	M	M	Bhersaf	M	M	M
Bikfaya	M	M	M	Biyakout	M	M	M	Bnabil	M	M	M
Bourj Hammoud	M	M	M	Bqennaya	M	M	M	Broummana El-Matn	M	M	M
Bsalim	M	M	M	Bsifrine	ML	M	M	Bteghrine	ML	M	M
Chaouiye	M	M	M	Chouaya El-Matn	M	M	M	Choueir	M	M	M
Chrine	M	M	M	Dahr El Sawan El-Mat	M	M	M	Daychouniyeh	M	M	M
Dbayeh	M	M	M	Deir Chamra	ML	M	M	Deir Mar Abda el Mch	M	M	M
Deir Mar Roukouz	M	M	M	Deir Tamiche	M	M	M	Dik El-Mehdi	M	M	M
Dikwaneh	M	M	M	Douar El-Matn	M	M	M	Fanar	M	M	M
Fraike	M	M	M	Haret El-Ballaneh	M	M	M	Hbous	M	M	M
Himlaya	M	M	M	Jal El Did	M	M	M	Jdeideh El-Metn	M	M	M
Jouar El-Matn	M	M	M	Jouret El-Ballout	M	M	M	Kaaqour	M	M	M
Kfar Aaqab	M	M	M	Kfertay El-Matn	M	M	L	Khenchara	M	M	M
Khillet El-Mtain	M	M	M	Konnabat Broummana	M	M	M	Konnabat Salima	M	M	M
Machraah El-Matn	ML	M	M	Majdel Tarchich	M	M	L	Majzoub	M	M	M
Mansouriyeh El-Metn	M	M	M	Mar Boutros Karm Et-	M	M	M	Mar Chaya et Mzekke	M	M	M
Mar Moussa Ed-Douar	M	M	M	Marjaba	ML	M	ML	Masqa	M	M	M
Mayasse	M	M	M	Mazraat Deir Aoukar	M	M	M	Mazraat El-Hadirat	M	M	M
Mazraat Yachouh	M	M	M	Mchikha	M	M	M	Menqlet Mezher	M	M	M
Mhaydseh Matn	M	M	M	Mkalles	M	M	M	Mrouj	M	M	L
Mtain	M	M	L	Mtaylor	M	M	M	Nabay	M	M	M
Naccache	M	M	M	Ouadi Chahine	M	M	M	Ouadi El-Karm El-Mat	M	M	M
Ouata El-Mrouj	M	M	M	Ouyoun El-Matn	M	M	M	Qornet Chehwan	M	M	M
Qornet El-Hamra	M	M	M	Roumieh	M	M	M	Sfeilet Bikfaya	M	M	M
Sinn El-Fil	M	M	M	Zabbougha	M	M	M	Zalqa	M	M	M

Zarouon	M	M	M	Zekrite	M	M	M	Zighrine El-Matn	M	M	M
Zouk El-Khrab	M	M	M								

Chouf

Municipality	20-Jan	21-Jan	22-Jan	Municipality	20-Jan	21-Jan	22-Jan	Municipality	20-Jan	21-Jan	22-Jan
Aalmane El-Chouf	M	M	M	Aammq El-Chouf	ML	M	M	Ain Ouzein	L	M	M
Ain Qani	L	M	M	Ain Zhalta	ML	M	M	Ainbal	ML	M	M
Amatour	L	M	M	Anout	M	M	M	Atrine	ML	M	M
Baadarane	ML	M	M	Baaqline	M	M	M	Baasir	M	M	M
Barja	M	M	M	Barouk	ML	M	M	Bater	ML	M	M
Batloun	ML	M	M	Bayqoun	M	M	M	Bchetfine	M	M	M
Beiteddine	ML	M	M	Benouati Ech-Chouf	M	M	M	Berjein	M	M	M
Bireh et Mtalleh	ML	M	M	Biret El-Chouf	M	M	M	Bkechtine Ouel Mchei	M	M	M
Bkifa El-Chouf	M	M	M	Botme	L	M	M	Bqaiaa Ech-Chouf	M	M	M
Bsaba El-Chouf	ML	M	M	Chammis El-Chouf	M	M	M	Chehim	M	M	M
Chemaarine	ML	M	M	Chourit	L	M	M	Daher El-Chouf	M	M	M
Dalhoun	M	M	M	Damour	M	M	M	Daraya El-Chouf	M	M	M
Deir El-Moukhalles	M	M	M	Deir Baba	M	M	M	Deir Dourit	ML	M	M
Deir El-Qamar	ML	M	M	Deir Kouche	ML	M	M	Dibbieh	M	M	M
Dmit	M	M	M	Fouara Jaafar	L	M	M	Fraidis El-Chouf	ML	M	M
Ghabet Jaafar	M	M	M	Gharife	ML	M	M	Haret Jandal	ML	M	M
Hasrout	M	M	M	Jadra	M	M	M	Jahlieh	M	M	M
Jbeih El-Chouf	ML	M	M	Jdeidet El-Chouf	ML	M	M	Jiyeh	M	M	M
Jleilyeh	M	M	M	Jmailiyeh	M	M	M	Joun	M	M	M
Kahlounie El-Chouf	M	M	M	Ketermaya	M	M	M	Kfar Faqoud	M	M	M
Kfar Hamal	M	M	M	Kfar Him	M	M	M	Kfar Katra	ML	M	M
Kfar Niss	ML	M	M	Kfar hay	ML	M	M	Kfarnabrakh	ML	M	M
Khirbet Bisri	ML	M	ML	Knayse El-Chouf	ML	M	M	Maaniyeh	M	M	M
Maasser Beiteddine	ML	M	M	Maasser El-Chouf	ML	M	M	Majdalouna	M	M	M
Majdel El-Meouch	ML	M	M	Mazboud	M	M	M	Mazmoura	M	M	M
Mazraat El Chouf	ML	M	M	Mazraat El Daher	ML	M	M	Mazraat El-Douair	L	M	M
Mechref	M	M	M	Mghairie	M	M	M	Mghayrie El-Chouf	M	M	M
Moukhtara	ML	M	M	Mrusti	M	M	M	Mtolle	M	M	M
Naameh	M	M	M	Niha El-Chouf	ML	M	M	Ouadi Abou Youssef	M	M	M
Ouadi Ed-Deir	M	M	M	Ouadi El-Sit	ML	M	M	Ouadi bnehlay	ML	M	M
Qraibeh	ML	M	M	Qreiaa	M	M	ML	Rmayle El-Chouf	M	M	M
Semqaniyeh	M	M	M	Sibline	M	M	M	Sirjbeil	M	M	M
Warhanieh	ML	M	M	Werdaniyeh	M	M	M	Zaarourieh	M	M	M

Baabda

Municipality	20-Jan	21-Jan	22-Jan	Municipality	20-Jan	21-Jan	22-Jan	Municipality	20-Jan	21-Jan	22-Jan
Abadiyeh	M	M	M	Ain Mouaffaq	M	M	M	Araiya	M	M	M
Arbaniyeh	M	M	M	Arsoun	M	M	M	Baabda	M	M	M
Baalchmey	M	M	M	Bmaryam	M	M	M	Bourj El-Brajneh	M	M	M
Boutchay	M	M	M	Bsaba Baabda	M	M	M	Btekhney	M	M	M
Btibyat	M	M	M	Bzbeddine	M	M	M	Chbeniyeh	M	M	M
Chiyah	M	M	M	Chmeisset Baabda	ML	M	M	Chouit	M	M	M
Deir El-harf	M	M	M	Deir Khouna	M	M	M	Dlaybeh	M	M	M

Falougha	M	M	M	Furn El-Chebbak	M	M	M	Hadath Beyrouth	M	M	M
Halaliyeh Baabda	M	M	M	Hammana	M	M	M	Haret El Sett	M	M	M
Haret Hamze	M	M	M	Haret Hreik	M	M	M	Hasbaiya El-Metn	ML	M	M
Jouar El-Hoz	L	ML	L	Jouret Arsoun	M	M	M	Kfar Chima	M	M	M
Kfar Selouane	ML	ML	L	Khalouat Baabda	M	M	M	Kneisset Baabda	M	M	M
Laylakeh	M	M	M	Louayzeh Baabda	M	M	M	Merdache	M	M	M
Mzairaa Baabda	M	M	M	Ouadi Chahrour El Ol	M	M	M	Ouadi Chahrour El So	M	M	M
Qalaa Baabda	M	M	M	Qhraybe Baabda	M	M	M	Qobbayaa	M	M	M
Qornayel	ML	M	M	Qortada	M	M	M	Qrayeh Baabda	M	M	M
Qsaibeh Baabda	M	M	M	Qtale Baabda	M	M	M	Ras El Metn	M	M	M
Ras El-Haref	M	M	M	Rouayset El-Ballout	M	M	M	Salima Baabda	M	M	M
Tahouitat El Ghadir	M	M	M	Tarchich	ML	M	L	Zandouqa	M	M	M

Aley

Municipality	20-Jan	21-Jan	22-Jan	Municipality	20-Jan	21-Jan	22-Jan	Municipality	20-Jan	21-Jan	22-Jan
Abey	M	M	M	Aghmid	M	M	M	Ain Dara	M	M	M
Ain Drafil	M	M	M	Ain El Halazoun	M	M	M	Ain El-Rmmaneh	M	M	M
Ain Jedideh	M	M	M	Ain Ksour	M	M	M	Ain Onoub	M	M	M
Ain Traz	M	M	M	Ainab	M	M	M	Aley	M	M	M
Aramoun	M	M	M	Aytat	M	M	M	Azouniyeh	M	M	M
Baawerta	M	M	M	Badghan Oua Wadi Bad	M	M	M	Bassatine	M	M	M
Bayssour	M	M	M	Bchamoun	M	M	M	Bdadoun	M	M	M
Behouara	M	M	M	Bennay	M	M	M	Bhamdoun El-Dayaa	M	M	M
Bhamdoun El-Mhatta	M	M	M	Bkhechtey	M	M	M	Bleibel	M	M	M
Bmakine	M	M	M	Bmehray	M	M	M	Bouzrid	M	M	M
Bserrine	M	M	M	Bsous	M	M	M	Btalloun	M	M	M
Btater	M	M	M	Chanay	M	M	M	Charoun	M	M	M
Chartoun	M	M	M	Chemlane	M	M	M	Choueifat El-Aamrous	M	M	M
Choueifat El-Oumara	M	M	M	Choueifat El-Quoubbe	M	M	M	Dakkoun	M	M	M
Deir Qoubel	M	M	M	Dfoun	M	M	M	Douair El Remmaneh	M	M	M
Ghaboun	M	M	M	Habramoun	M	M	M	Homs Oua Hama	M	M	M
Houmal	M	M	M	Jisr El Qadi	M	M	M	Kehaleh	M	M	M
Keyfoun	M	M	M	Kfar Aamey	M	M	M	Kommatyeh	M	M	M
Maasrati	M	M	M	Majdel Baana	M	M	M	Mansourieh et Ain El	M	M	M
Mazraat El-Nahr	M	M	M	Mchakhte	M	M	M	Mecherfeh	M	M	M
Mejdaya	M	M	M	Mrayjat	ML	M	M	Ramliyah	ML	M	M
Rechmaya	M	M	M	Rejmeh	M	M	M	Remhala	M	M	M
Rouaysset El Neemane	M	M	M	Saoufar	M	M	M	Selfaya	M	M	M
Sirhmoul	M	M	M	Souq El Ghareb	M	M	M	Taazanieh	M	M	M

Kesrouane

Municipality	20-Jan	21-Jan	22-Jan	Municipality	20-Jan	21-Jan	22-Jan	Municipality	20-Jan	21-Jan	22-Jan
Achkout	M	M	M	Adma Oua Dafneh	M	M	M	Ain Ed-Delbe Kesroua	M	M	ML
Ain El-Rihane	M	M	M	Aintoura Kesrouane	M	M	M	Ajaltoun	M	M	M
Akaybeh Kesrouane	M	M	M	Aramoun Kesrouane	M	M	M	Azra ouel Ozor	M	M	M
Ballouneh	M	M	M	Batha	M	M	M	Bekaatat Achkout	M	M	M
Bekaatat Kanaan	M	M	ML	Bizhel	M	M	M	Bouar	M	M	M
Bqaatouta	M	M	L	Bqaq Ed-Dine	M	M	M	Bzommar	M	M	M

Chahtoul	M	M	M	Chnaniir	M	M	M	Chouan	M	M	M
Daraya Kesrouane	M	M	M	Darououn	M	M	M	Deir Baqlouch	M	M	M
Dlebta	M	M	M	Eghbeh	M	M	M	Faraya	M	M	L
Fatka	M	M	M	Feytroun	M	M	M	Ghazir	M	M	M
Ghbaleh Kesrouane	M	M	M	Ghedrass	M	M	M	Ghosta	M	M	M
Ghynéh	M	M	M	Harharaya w Kattine	M	M	M	Harissa Kesrouane	M	M	M
Hayata	M	M	M	Hosein	M	M	M	Hrajel	M	M	L
Jdeideh Ghazir	M	M	M	Jeita	M	M	M	Jounieh Ghadir	M	M	M
Jounieh Haret Sakhr	M	M	M	Jounieh Salel Alma	M	M	M	Jounieh Sarba	M	M	M
Jouret Bedrane	M	M	M	Jouret Mhad	M	M	M	Jouret Termos	M	M	M
Kfar Debiane	M	M	L	Kfar Tay Kesrouane	M	M	M	Kfar Yassine	M	M	M
Kfour Kesrouane	M	M	M	Kharayeb Nahr Ibrahi	M	M	M	Klayaat Kesrouane	M	M	M
Maarab	M	M	M	Maaysra Kesrouane	M	M	M	Mayrouba	M	M	L
Mazraat Er-Ras	M	M	M	Mazraat Mrah El-Mir	M	M	M	Mchaa El Ftouh	M	M	L
Mchaa Faraya	M	M	L	Mchaa Kfar Dibiane	M	M	VL	Mghaer	M	M	M
Mradiyah	M	M	M	Nahr Ed-Dahab	M	M	M	Nammoura Kesrouane	M	M	M
Ouata El Jaouz	M	M	M	Ouata Sillam	M	M	M	Raachine	M	M	M
Rayfoun	M	M	M	Safra Kesrouane	M	M	M	Shayle Kesrouane	M	M	M
Tabarja	M	M	M	Yahchouch	M	M	M	Zaaytreh	M	M	M
Zeytoun	M	M	M	Zouk Mikael	M	M	M	Zouk Mosbeh	M	M	M

Baalbek_Hermel

Baalbek

Municipality	20-Jan	21-Jan	22-Jan	Municipality	20-Jan	21-Jan	22-Jan	Municipality	20-Jan	21-Jan	22-Jan
Aadous	M	M	L	Aamchki	M	M	L	Aarsal	M	M	L
Ain Baalbek	M	M	ML	Ain Bourday	M	M	L	Ain El-Benye	M	M	L
Ain El-Jaouz Baalbek	M	M	L	Ain El-Siya Chadoura	M	M	L	Al Khodr Baalbek	M	M	L
Al Nabi Chit	M	M	L	Aynata Baalbek	M	M	L	Baalbek	M	M	L
Bachwat	M	M	M	Barqa	M	M	M	Bednayel Baalbak	M	M	L
Beit Chama	M	M	M	Bijjaje	M	M	M	Bouday	M	M	ML
Brital	M	M	L	Btadi	M	M	M	Chaat	M	M	L
Chaibe	M	M	L	Chlifa	M	M	M	Chmestar	M	M	ML
Dar El-Oussa	M	M	M	Deir El-Ahmar	M	M	M	Deir Mar Maroun Baal	M	M	M
Douris	M	M	L	Fakiha	M	M	M	Hadath Baalbek	M	M	ML
Ham	M	M	L	Haour Taala	M	M	L	Hizzine	M	M	ML
Hlebta	M	M	M	Hosh Barada	M	M	L	Hosh El Dahab	M	M	ML
Hosh El Snid	M	M	L	Hosh El-Nabi	M	M	L	Hosh El-Rafiq	M	M	ML
Hosh Tal Safiya	M	M	L	Hrebta	M	M	M	laat	M	M	ML
Jebaa	M	M	ML	Jenta	M	M	L	Kfar Dabach	M	M	M
Kfar Dane	ML	M	ML	Khraibeh El-Hermel	M	M	M	Khreibet Baalbek	M	M	L
Kneisset Baalbek	M	M	L	Labueh	M	M	ML	Maarboun	M	M	L
Majdaloun	M	M	L	Maqneh	M	M	L	Mazraat Beit Mcheik	M	M	L
Misraya	M	M	ML	Moqraq	M	M	ML	Nabha El-Damdoum	M	M	ML
Nabi Chbay	M	M	VL	Nabi Osman	M	M	ML	Nahleh baalbek	M	M	L
Ouadi El-Oss	M	M	M	Qaa Baayoun	ML	M	M	Qaa Jouar Maqiye	L	M	M
Qaa Ouadi El-Khanzir	ML	M	M	Qah Baalbek	ML	M	M	Qarha Baalbek	M	M	M

Qsarnaba	M	M	M	Ram Baalbek	M	M	M	Ras Baalbek El Sahl	M	M	M
Ras Baalbek El-Charq	M	M	M	Riha	M	M	ML	Saaide	ML	M	L
Sbouba	M	M	ML	Seriine El-Tahta	M	M	L	Slouqi	M	M	L
Taiba Baalbek	M	M	L	Talia	M	M	L	Taraiya	M	M	L
Temnin El Fawqa	M	M	M	Temnin El-Tahta	M	M	M	Tfail	M	M	L
Yahfoufa	M	M	L	Yammouneh	M	M	L	Younine	M	M	L
Zboud	M	M	M								

Hermel

Municipality	20-Jan	21-Jan	22-Jan	Municipality	20-Jan	21-Jan	22-Jan	Municipality	20-Jan	21-Jan	22-Jan
Charbine El-Hermel	M	M	M	Hermel Jbab	M	M	M	Hermel	ML	M	M
Maaysra El-Hermel	M	M	M	Michaa Mrajhine	M	M	M	Ouadi Faara	M	M	M
Ras Baalbek - Ouadi	M	M	M	Ras Baalbek El Gharb	M	M	M	Zighrine	M	M	M

Akkar

Akkar

Municipality	20-Jan	21-Jan	22-Jan	Municipality	20-Jan	21-Jan	22-Jan	Municipality	20-Jan	21-Jan	22-Jan
Aain Tinta	M	M	M	Aaiyat	M	M	M	Aakkar El-Aatiqa	ML	M	M
Aamar Akkar	M	M	M	Aamar El Baykat	M	M	M	Aamayer	ML	M	M
Aamriyet Akkar	M	M	M	Aandqet	ML	M	M	Aarmeh	M	M	M
Aarqa	M	MH	M	Aawaynat	ML	M	M	Aayoun Akkar	M	M	M
Abboudiye	M	M	M	Ain El-Zeit	M	M	M	Ain Yaaqoub	ML	M	M
Akroum	ML	M	M	Aridet Cheikh Zennad	MH	M	M	Baldeh w Mazraat Bal	M	M	M
Barcha	M	M	M	Bardeh	M	M	M	Bebnine	M	M	M
Beino	M	M	M	Beit Ayoub	M	M	M	Beit El-Haouch	M	M	M
Beit Mellat	M	M	M	Beit Younes	ML	M	M	Berbara Akkar	M	M	M
Berqayel	M	M	M	Bezbina	L	M	M	Bireh Akkar	M	M	M
Borj	M	M	M	Bqerezla	M	M	M	Bzal	M	M	M
Chane	ML	M	M	Chaqdouf	M	M	M	Charbila	M	M	M
Cheikh Mohammad	M	M	M	Cheikh Taba Es-Sahl	M	MH	M	Cheikh Taba	M	M	M
Cheikh Zennad	M	MH	M	Cheikhlar	ML	M	M	Chir Hmairine	M	M	M
Daghle	M	M	M	Dahr Laissine	M	M	M	Darine	M	M	M
Dawra	M	M	M	Dawsa w Baghdadi	M	M	M	Dayret Nahr El-Kabir	M	M	M
Deir Dalloum	M	M	M	Deir Jennine	M	M	M	Denbou	ML	M	M
Dibbabiyyeh	M	M	M	Douair Aadwiyeh	M	M	M	Fassikine	M	M	M
Fnaydek	M	M	M	Fraydes Akkar	M	M	M	Ghazayle	M	M	M
Habchit	ML	M	M	Hakour	M	M	M	Halba	M	M	M
Haouchab	M	M	M	Hayssat	M	MH	M	Haytla	M	M	M
Hayzouq	M	M	M	Hedd	M	M	M	Hmaira Akkar	M	M	M
Hmaiss Akkar	M	M	M	Hnaider	M	M	M	Hokr Ed-Dahri	M	M	M
Hokr Etti	M	M	M	Hokr Jouret Srar	M	M	M	Houaich	ML	M	M
Hrar	M	M	M	Idbil	M	M	M	Ilal	M	M	M
Janine	M	M	M	Jdeidet El-JoumeH	M	M	M	Jdeidet El-Kaiteh	M	M	M
JebraYel	M	M	M	Kafr	M	M	ML	Kafr	M	M	M
Karm Asfour	M	M	M	Kfar Melki Akkar	M	MH	M	Kfar Noun	M	M	M
Kfarharra	M	M	M	Khalsa	ML	M	M	Kharnoubet Akkar	M	M	M

Khirbet Daoud Aakkar	M	M	M	Khirbet El Remmane	ML	M	M	Khirbet Shar	M	M	M
Khoreybet El-Jindi	M	M	M	Khreibet Aakkar	M	M	M	Kneisset Aakkar	M	MH	M
Kneisset Hnaider	M	M	M	Knisse	M	M	M	Kroum El-Aarab	M	M	M
Kwachra	M	M	M	Kweykhat	M	M	M	Machta Hammoud	ML	M	M
Majdala	M	M	M	Majdel Akkar	M	M	M	Mar Touma	M	M	M
Marlaya Melhem	M	MH	M	Mashha	M	M	M	Massoudiye	M	MH	M
Mazraat Beit Ghattas	M	M	M	Mazraat En-Nahriye	ML	M	M	Mechmech	M	M	M
Memneh	L	ML	M	Mhammara	M	M	M	Mighraq Aakkar	M	MH	M
Minyara	M	M	M	Moqayteh	M	MH	M	Mounjez	M	M	M
Msalla	M	M	M	Mzeihmeh	M	M	M	Nfaiseh	M	M	M
Noura Et-Tahta	M	M	M	Ouadi El-Haour	M	M	M	Ouadi El-Jamous	M	M	M
Ouyoun El-Ghizlane	M	M	M	Qaabarine	M	MH	M	Qabaait	ML	M	M
Qachlaq	M	M	M	Qantara Aakkar	M	M	M	Qarha Aakkar	ML	M	M
Qarqaf	M	M	M	Qboula	M	M	M	Qleiaat Aakkar	M	MH	M
Qloud El-Baqie	M	M	M	Qobaiyat Aakkar	ML	M	M	Qobbat Chamrat	M	M	M
Qorayat	ML	M	M	Qornet Aakkar	M	M	M	Qsair Aakkar	M	M	M
Rahbe	M	M	M	Rihaniyet Aakkar	M	M	M	Rmah	ML	M	M
Rmoul	M	MH	M	Saadine	M	M	M	Sadaqa	M	M	M
Saidnaya	M	M	M	Sammouniye	M	MH	M	Sayssouq	M	M	M
Semmaqiye	MH	M	M	Semmaqli	M	MH	M	Sfinet El-Dreib	M	M	M
Sfinet El-Qaitaa	M	M	M	Sindyanet Zeidane	M	M	M	Souaisset Aakkar	M	M	M
Srar	M	M	M	Tal Abbas El Gharby	M	M	M	Tal Abbas El-Chargy	M	M	M
Tal Biret	M	MH	M	Tal Hmayra	M	M	M	Tal Maayan Tal Kiri	M	MH	M
Tal Sibel	M	MH	M	Tallet Chattaha	M	M	M	Tikrit	M	M	M
Tleil	M	M	M	Tshea	ML	M	M	Zawarib	M	M	M
Zouq El Hosniyeh	M	M	M	Zouq El-Haddara	M	M	M	Zouq El-Hbalsa	M	M	M
Zouq El-Moqachrine	M	M	M								

Sud

Sour

Municipality	20-Jan	21-Jan	22-Jan	Municipality	20-Jan	21-Jan	22-Jan	Municipality	20-Jan	21-Jan	22-Jan
Aaiyeh	M	M	M	Aalma El-Chaab	M	M	M	Aaytit	M	M	M
Abbassiyeh Sour	M	M	M	Abou Chech	M	M	M	Ain Abou Abdallah	M	M	M
Ain Baal	M	M	M	Arzoun	M	M	M	Aziyeh	M	M	M
Baflaya	M	M	M	Barich	M	M	M	Batouliyeh	M	M	M
Bayad	M	M	M	Bazouriyeh	M	M	M	Bediass	M	M	M
Bestiyat	M	M	M	Borj El Chemali	M	M	M	Borj En-Naqoura	M	M	M
Borj Rahhal	M	M	M	Boustane	M	M	M	Btaychiyeh	M	M	M
Chaaitiye	M	M	M	Chameh	M	M	M	Chehabiye	M	M	M
Chehour	M	ML	M	Chihine	M	M	M	Debaal Sour	M	M	M
Deir Amess	M	M	M	Deir Kifa	M	M	M	Deir Qanoun El-Ain	M	M	M
Deir Qanoun El-Naher	M	M	M	Derdghaiya	M	M	M	Dhayra	M	M	M
Halloussiyeh	M	M	M	Hamoul	M	M	M	Hanaouey	M	M	M
Henniye	M	M	M	Hmairi Sour	M	M	M	Iskandarouna Sour	M	M	M
Jbal El Botom	M	M	M	Jebbin	M	M	M	Jennata	M	M	M
Jijim	M	M	M	Jouaiya	M	M	M	Kneisset Sour	M	M	M

Maarake	M	M	M	Maaroub	M	M	M	Majadel	M	M	M
Majdalzoun	M	M	M	Mansouri Sour	M	M	M	Marnba	M	ML	M
Marouahine	ML	ML	M	Mazraat El-Zalloutiy	M	M	M	Mazraat Mechref	M	M	M
Mazraat Tayr Semhat	M	L	M	Mheilib	M	M	M	Neffakhiyeh	M	M	M
Niha Sour	M	M	M	Ouadi Jilo	M	M	M	Qana	M	M	M
Qolaileh Sour	M	M	M	Rechknany	M	M	M	Rmadiyah	M	M	M
Selha Sour	M	M	M	Siddiqine	M	M	M	Sour	M	M	M
Srifa	M	ML	M	Tayr Debbe	M	M	M	Tayr Felsay	M	M	M
Tayr Harfa	M	M	M	Touayri	M	ML	M	Toura	M	M	M
Yanouh Sour	M	M	M	Yarine	M	M	M	Zebqine	ML	ML	M

Saida

Municipality	20-Jan	21-Jan	22-Jan	Municipality	20-Jan	21-Jan	22-Jan	Municipality	20-Jan	21-Jan	22-Jan
Aanqoun	M	M	M	Aaqtanit	M	M	M	Aarab Ej-Jall	M	M	M
Aarab Tabbaya	M	M	M	Abra Saida	M	M	M	Adloun	M	M	M
Adousiyeh	M	M	M	Ain-El-Deleb	M	M	M	Arzai	M	M	M
Babliyah	M	M	M	Barty	M	M	M	Bissariyeh	M	M	M
Bnaafoul	M	M	M	Bqosta	M	M	M	Bramiy	M	M	M
Daoudiyeh	M	M	M	Dareb El-Sim	M	M	M	Erkay	M	M	M
Ghassanieh	M	M	M	Ghazieh	M	M	M	Hajjeh	M	M	M
Haret Saida	M	M	M	Hartiyeh	M	M	M	Hlaliye Saida	M	M	M
Insariyat	M	M	M	Jazira Saida	M	M	M	Kafar Bit	M	M	M
Kaoutariyet El-Siyad	M	M	M	Kfar Chellal	M	M	M	Kfar Hatta Saida	M	M	M
Kfar Milke Saida	M	M	M	Khartoum	M	M	M	Khaziz	M	M	M
Khirbet Ed-Douair Sa	M	M	M	Khirbet El-Bassal	M	M	M	Khrayeb Saida	M	M	M
Loubieh	M	M	M	Maghdouche	M	M	M	Majdelyoun	M	M	M
Matariyet El-Choumar	M	M	M	Matayriyeh	M	M	M	Mazraat 'Mseileh	M	M	M
Mazraat 'Snaiber	M	M	M	Mazraat Aarab Soukka	M	M	M	Mazraat Deir Taqla	M	M	M
Mazraat El Yahoudiye	M	M	M	Mazraat El-Housseini	M	M	M	Mazraat El-Mhaydaleh	M	M	M
Mazraat El-Ouasta	M	M	M	Mazraat Jamjim	M	M	M	Mazraat Kaoutariyet	M	M	M
Mazraat Kfar Badda	M	M	M	Mazraat Oussamiyat	M	M	M	Mazraat Sari	M	M	M
Mazraat Sinai	M	M	M	Meemariyeh	M	M	M	Merouaniyeh	M	M	M
Miyeh ou Miyeh	M	M	M	Najjariyeh	M	M	M	Qaaqiyat El-Snaouba	M	M	M
Qnarit	M	M	M	Qraiye Saida	M	M	M	Saida Ed-Dekermane	M	M	M
Saida El-Oustani	M	M	M	Saida El-Qadimeh	M	M	M	Saida Kefraya	M	M	M
Saksakiyeh	M	M	M	Salhie Saida	M	M	M	Sarafand	M	M	M
Sfenta	M	M	M	Tafahta	M	M	M	Tanbourit	M	M	M
Tebna	M	M	M	Zaghdraiya	M	M	M	Zeita	M	M	M
Zrariyeh	M	M	M								

Jezzine

Municipality	20-Jan	21-Jan	22-Jan	Municipality	20-Jan	21-Jan	22-Jan	Municipality	20-Jan	21-Jan	22-Jan
Ain El-Mir (El Estab	M	M	M	Anane	M	M	M	Aramta	ML	M	M
Ariya	L	M	M	Aychiyeh	ML	M	M	Azour	L	M	M
Baba	L	M	M	Bayssour Jezzine	M	M	M	Benoueteh Jezzine	L	M	M
Bhannine	ML	M	M	Bisri	L	M	ML	Bkassine	L	M	M
Bouslaya	M	M	M	Btedine El-Leqech	L	M	ML	Chbail	L	M	M
Choualiq Jezzine	M	M	M	Dahr Ed-Deir	M	M	M	Deir El Qattine	ML	M	M

Demachqiyeh	M	M	M	Ghabbatiyeh	L	M	M	Harf Jezzine	L	M	M
Hassaniyeh	M	M	M	Haytoupleh	M	M	M	Haytura	L	M	M
Hidab	ML	M	M	Homsiyeh	L	M	M	Jabal Toura	L	M	M
Jarmaq	M	M	M	Jensnaya	M	M	M	Jernaya	M	M	M
Jezzine	L	M	M	Karkha	M	M	M	Kfar Falous	M	M	M
Kfar Houna	L	M	M	Kfar Jarrah	M	M	M	Lebaa	M	M	M
Louayzet Jezzine	ML	M	M	Machmouche	L	M	M	Mahmoudiyeh Jezzine	M	M	M
Maknounye Jezzine	L	M	M	Maraat Ouazaiyeh	ML	M	M	Mazraat Daraya	L	M	M
Mazraat El-Aarqoub	M	M	M	Mazraat El-Mathane	ML	M	ML	Mazraat El-Rahbane	L	M	M
Mazraat Khallet Khaz	L	M	M	Mazraat Louzid (Loua	L	M	M	Mazraat Qrouh	ML	M	M
Mazraat Tamra	M	M	M	Mazraat Zighrine Jez	M	M	M	Mazraat	L	M	M
Mharbiyeh	M	M	M	Midane Jezzine	L	M	M	Mjeydel Jezzine	M	M	M
Mlikh	ML	M	M	Mrah El-Hbasse	M	M	M	Ouadi Baanquodaine	M	M	M
Ouadi El-Laymoun	M	M	M	Ouardiyeh	L	M	M	Qabaa Jezzine	L	M	M
Qatrani	L	M	M	Qaytoupleh	L	M	M	Qtaleh Jezzine	M	M	ML
Rihane Jezzine	ML	M	M	Rimat	M	M	M	Roum	ML	M	M
Roummanet	ML	M	M	Sabbah	L	M	M	Saydoun	M	M	M
Sfaray	M	M	M	Snaya	ML	M	M	Sojoud	M	M	M
Srayri	L	M	M	Taaid	L	M	M	Wadi Jezzine	L	M	M
Zhalta	ML	M	M								

Bekaa

West Bekaa

Municipality	20-Jan	21-Jan	22-Jan	Municipality	20-Jan	21-Jan	22-Jan	Municipality	20-Jan	21-Jan	22-Jan
Aammiq BG	M	M	M	Ain El Tineh BG	M	M	M	Ain Zebdeh	M	M	M
Ana	M	M	M	Aytanit	M	M	M	Baaloul BG	M	M	M
Bab Mareh	M	M	M	Chouberqiye Aammiq	M	M	M	Dakoue	ML	M	M
Deir Ain El-Jaouze	M	M	M	Deir Tahniche	M	M	M	Ghaza	M	M	M
Harime El-Soughra	ML	M	M	Hoch Harimeh	ML	M	M	Jazira BG	ML	M	M
Jib Jennine	M	M	M	Kamed-El-Laouz	M	M	M	Kefraya BG	M	M	M
Khiara El Atika	M	M	M	Khiara	ML	M	M	Khirbet Qanafar	M	M	M
Lala	M	M	M	Lebbaya BG	M	M	M	Loussa	M	M	M
Machghara	M	M	M	Manara (Hammara) BG	M	M	M	Mansoura BG	M	M	M
Marej BG	ML	M	M	Maydoun	M	M	M	Ouaqf BG	ML	M	M
Qaraaoun	M	M	M	Qelya	M	M	M	Raouda (Istabel)	ML	M	M
Saghbine	M	M	M	Sohmor	M	M	M	Soltan Yacoub el Ara	ML	M	M
Souairy	ML	M	M	Sultan Yaacoub	M	M	M	Tal Znoun	M	M	M
Yehmor BG	M	M	M	Zilaya	ML	M	M				

Zahle

Municipality	20-Jan	21-Jan	22-Jan	Municipality	20-Jan	21-Jan	22-Jan	Municipality	20-Jan	21-Jan	22-Jan
Aanjar (Haouch Mouss	ML	M	M	Ablah	ML	M	M	Ain Kfarzabad	M	M	ML
Ali-El-Nahri	M	M	ML	Bar Elias	ML	M	M	Bouarej	M	M	M
Cheberqiyet Tabet	ML	M	M	Chtaura	ML	M	M	Deir El Ghazal	M	M	ML
Delhamiyet Zahle	ML	M	ML	Ferzol	ML	M	M	Haouch El-Ghanam	M	M	ML
Haouch Es-Siyadeh	ML	M	M	Haouch Hala	ML	M	ML	Haouch Mandara	ML	M	M

Haouch Qayssar	M	M	M	Hezerta	M	M	L	Hosh Moussa	ML	M	L
Jdita	ML	M	M	Kfarzabad	ML	M	ML	Ksara	ML	M	M
Majdel Aanjar	ML	M	M	Makssi	ML	M	M	Massa	M	M	L
Mazraat Er-Remtaniye	M	M	ML	Mrayjat Zahle	M	M	M	Mzaraa Zahle	M	M	M
Nabi Ayla	M	M	M	Nasriyet Rizk	M	M	L	Nasriyet Zahle	ML	M	M
Niha Zahle	M	M	M	Ouadi Ed-Deloum	M	M	M	Ouadi El-Arayech	M	M	ML
Qaa El Rim	M	M	ML	Qab Elias	ML	M	M	Qousaya	M	M	L
Rhit	M	M	L	Riyak	ML	M	ML	Saadnayel	L	M	M
Taal El-Akhdar	ML	M	M	Taalbeya	L	M	M	Taanayel	L	M	M
Talamara	ML	M	ML	Tcheflik Edde Haouch	M	M	M	Tcheflik Qiqano	ML	M	M
Terbol Zahle	ML	M	L	Touaite Zahle	M	M	L	Zahle Aradi	ML	M	M
Zahle El-Berbara	ML	M	ML	Zahle El-Maallaqa	ML	M	M	Zahle El-Midane	ML	M	ML
Zahle Er-Rassiye	ML	M	ML	Zahle Haouch El-Ouma	L	M	M	Zahle Haouch El-Ouma	L	M	M
Zahle Haouch Ez-Zara	ML	M	M	Zahle Maalaga Aradi	ML	M	M	Zahle Mar Antonios	ML	M	ML
Zahle Mar Elias	ML	M	M	Zahle Mar Gerios	ML	M	M	Zahle Saydet En-Naja	ML	M	M
Zebdoul	L	M	ML								

Rachaiya

Municipality	20-Jan	21-Jan	22-Jan	Municipality	20-Jan	21-Jan	22-Jan	Municipality	20-Jan	21-Jan	22-Jan
Ain Arab Rachaiya	M	M	M	Ain Ata	M	ML	M	Ain Harche	M	M	M
Aqabe Rachaya	M	M	M	Ayha	M	M	M	Ayta El Fokhar	M	M	M
Bakifa Rachaya	M	M	M	Bakka	M	M	M	Beit Lahya	M	M	M
Bireh Rachaiya	M	M	M	Daheer El Ahmar	M	M	M	Deir El-Achayer	M	M	M
Heloua Rachaiya	M	M	M	Hoch El Qannabeh Rac	M	M	M	Kaoukaba Bou Arab	M	M	M
Kfar Danis	M	M	M	Kfar Mechki	M	M	M	Kfar Qouq	M	M	M
Kherbet Rouha	M	M	M	Majdel Balhiss	M	M	M	Mdoukha	M	M	M
Mhaydseh Rachaiya	M	M	M	Nabi Safa	M	M	M	Rachaiya	M	M	M
Rafid Rachaiya	M	M	M	Selsata (Mazraat Dei	M	M	M	Tannoura	M	M	M
Yanta	M	M	M								

Beyrouth

Beyrouth

Municipality	20-Jan	21-Jan	22-Jan	Municipality	20-Jan	21-Jan	22-Jan	Municipality	20-Jan	21-Jan	22-Jan
Achrafieh	M	M	M	Ain el-Mreisse	M	M	M	Bachoura	M	M	M
Beirut Central Distr	MH	M	M	Marfai	MH	M	M	Mazraa	M	M	M
Medaouar	M	M	M	Minet el-Hosn	MH	M	M	Mwssaitbeh	M	M	M
Ras Beirut	M	M	M	Rmeil	M	M	M	Saifi	MH	M	M
Zqaq el-Blat	MH	M	M								