

Lebanon Fire Risk Bulletin



CIVIL DEDEFENCE

Refer to cadast table condition.

Please note that the indicated temperature is at 2 meters height from the ground.

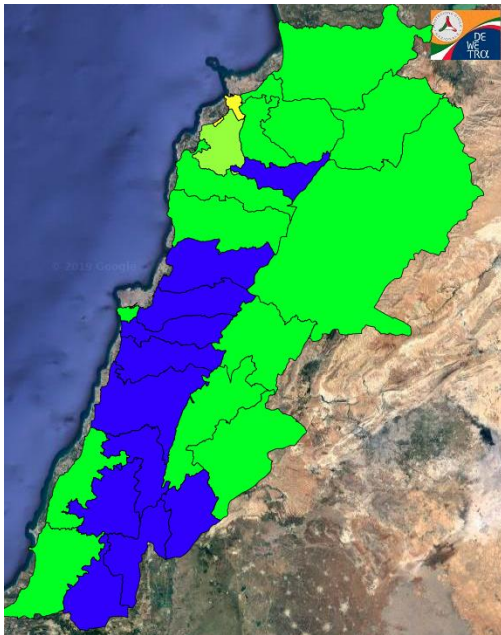
General description of potential fire risk situation

Symbol	Level of risk	Meaning and actions
VL	Very low	Very low fire risk. Controlled burning operations can be hardly executed due to high fuel moisture content. Normally wildfires self-extinguish.
L	Low	Low fire risk. Controlled burning operations can be executed with a reasonable degree of safety.
ML	Medium low	Medium-low fire risk. Controlled burning operations can be executed in safety conditions. All the fires need to be extinguished.
M	Medium	Medium fire risk. Controlled burning operations would be avoided. All the fires need to be very well extinguished.
M	Medium high	Controlled burning is not recommended. Open flame will start fires. Cured grasslands and forest litter will burn readily. Spread is moderate in forests and fast in exposed areas. Patrolling and monitoring is suggested. Fight fires with direct attack and all available resources.
H	High	Ignition can occur easily with fast spread in grass, shrubs and forests. Fires will be very hot with crowning and short to medium spotting. Direct attack on the head may not be possible requiring indirect methods on flanks. Patrolling and monitoring the territory is highly suggested.
E	Extreme	Ignition can occur also from sparks. Fires will be extremely hot with fast rate of spread. Control may not be possible during day due to long range spotting and crowning. Suppression forces should limit efforts to limiting lateral spread. Damage potential total. Patrolling and monitoring the territory is highly suggested.

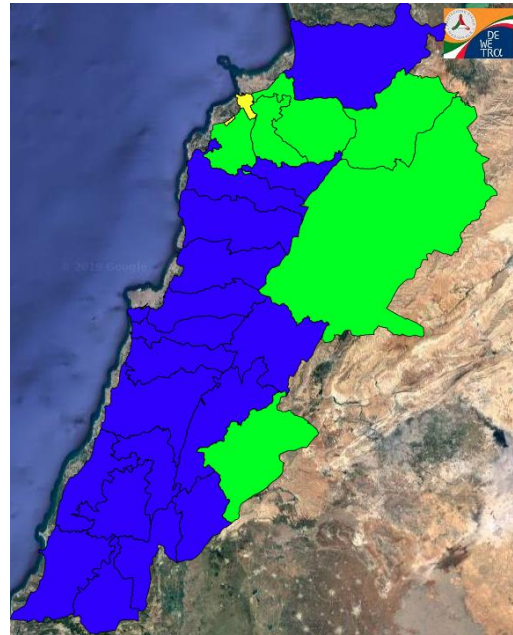
Beirut, 20 January 2020

FIRE RISK INDEX

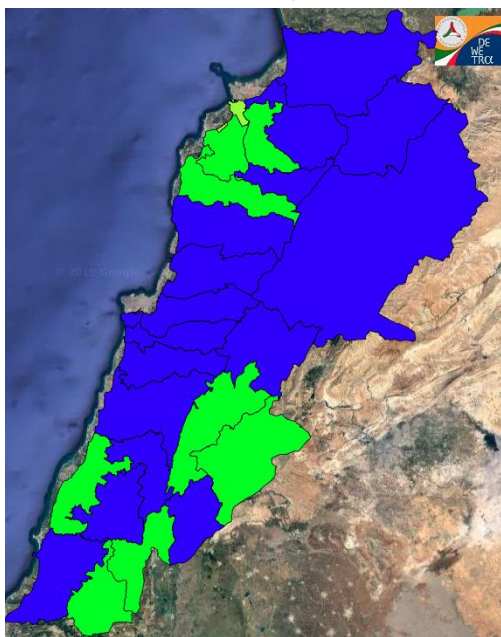
19 January 2020



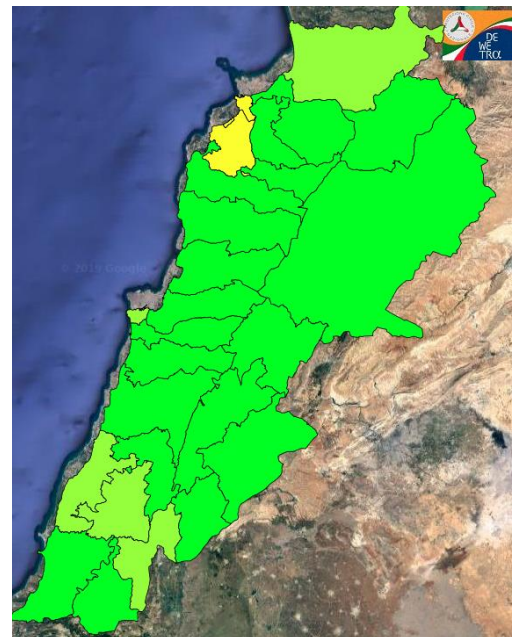
20 January 2020



21 January 2020



22 January 2020

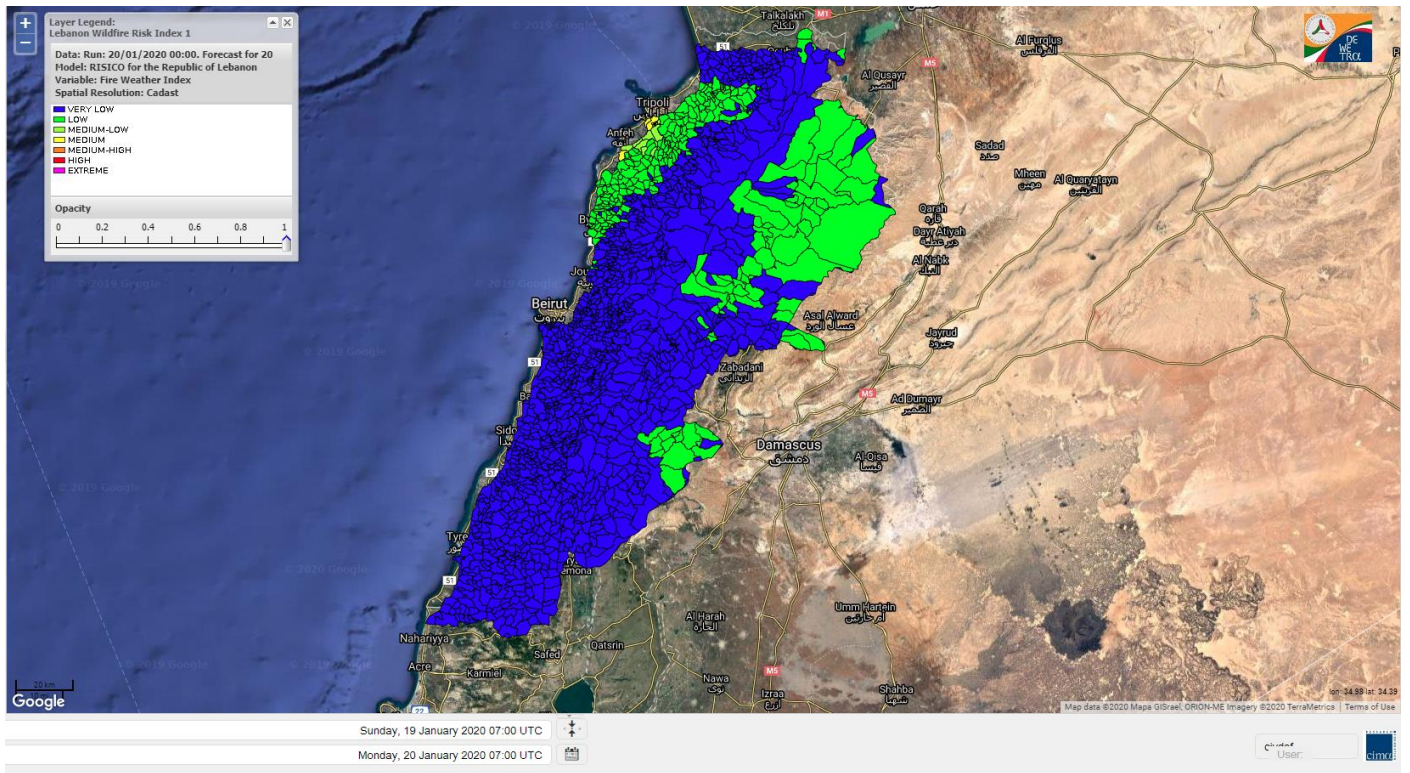


Layer Legend:
Lebanon Wildfire Risk Index 1

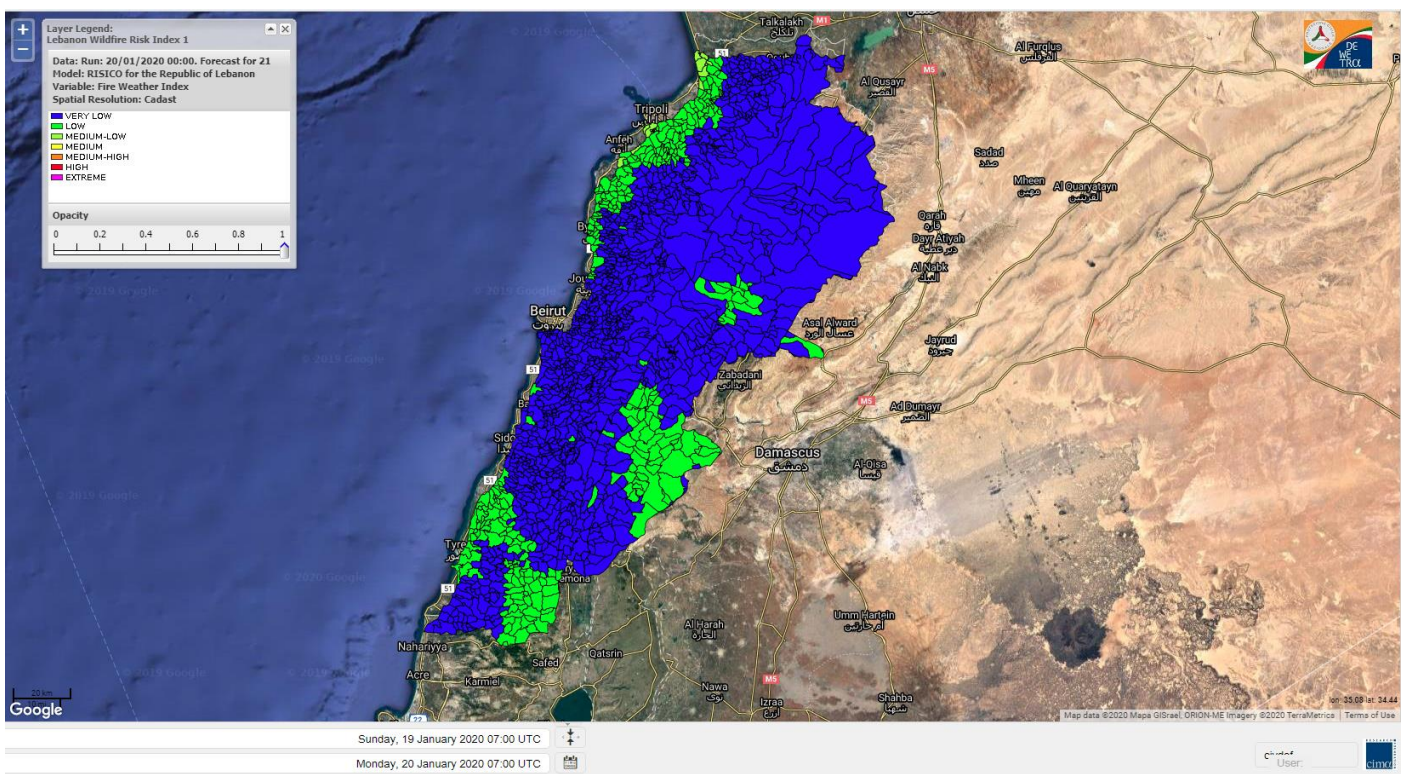
Data: Run: 20/01/2020 00:00. Forecast for 20
Model: RISICO for the Republic of Lebanon
Variable: Fire Weather Index
Spatial Resolution: Caza

- VERY LOW
- LOW
- MEDIUM-LOW
- MEDIUM
- MEDIUM-HIGH
- HIGH
- EXTREME

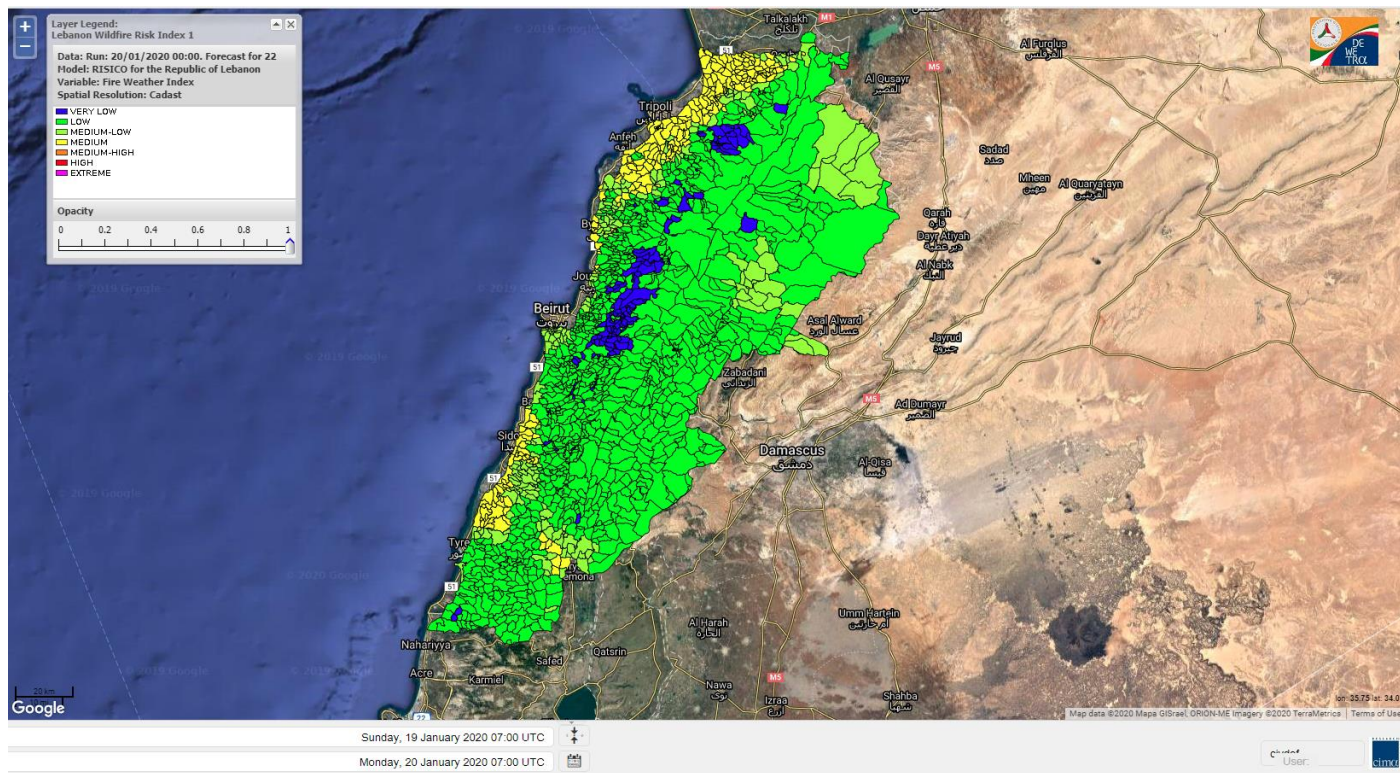
Lebanon for 20 January 2020



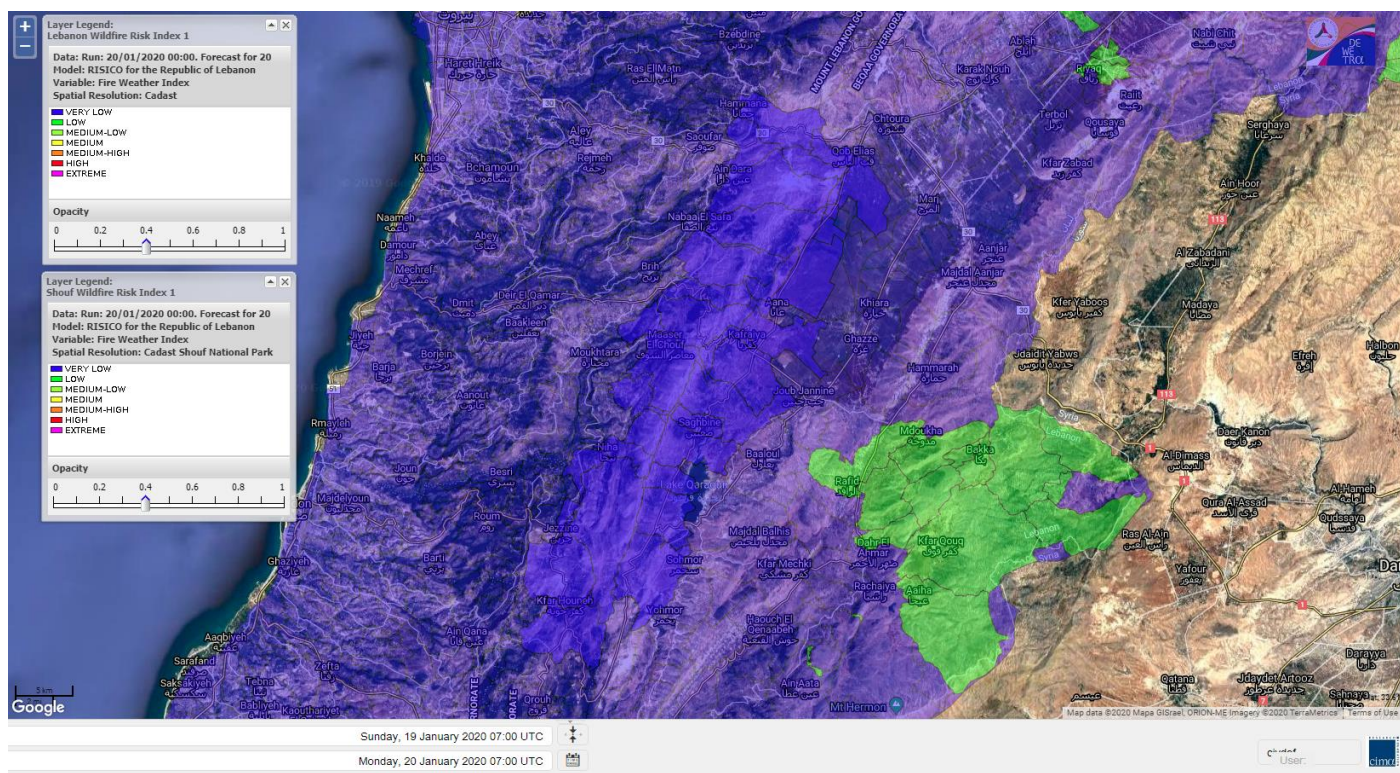
Lebanon for 21 January 2020



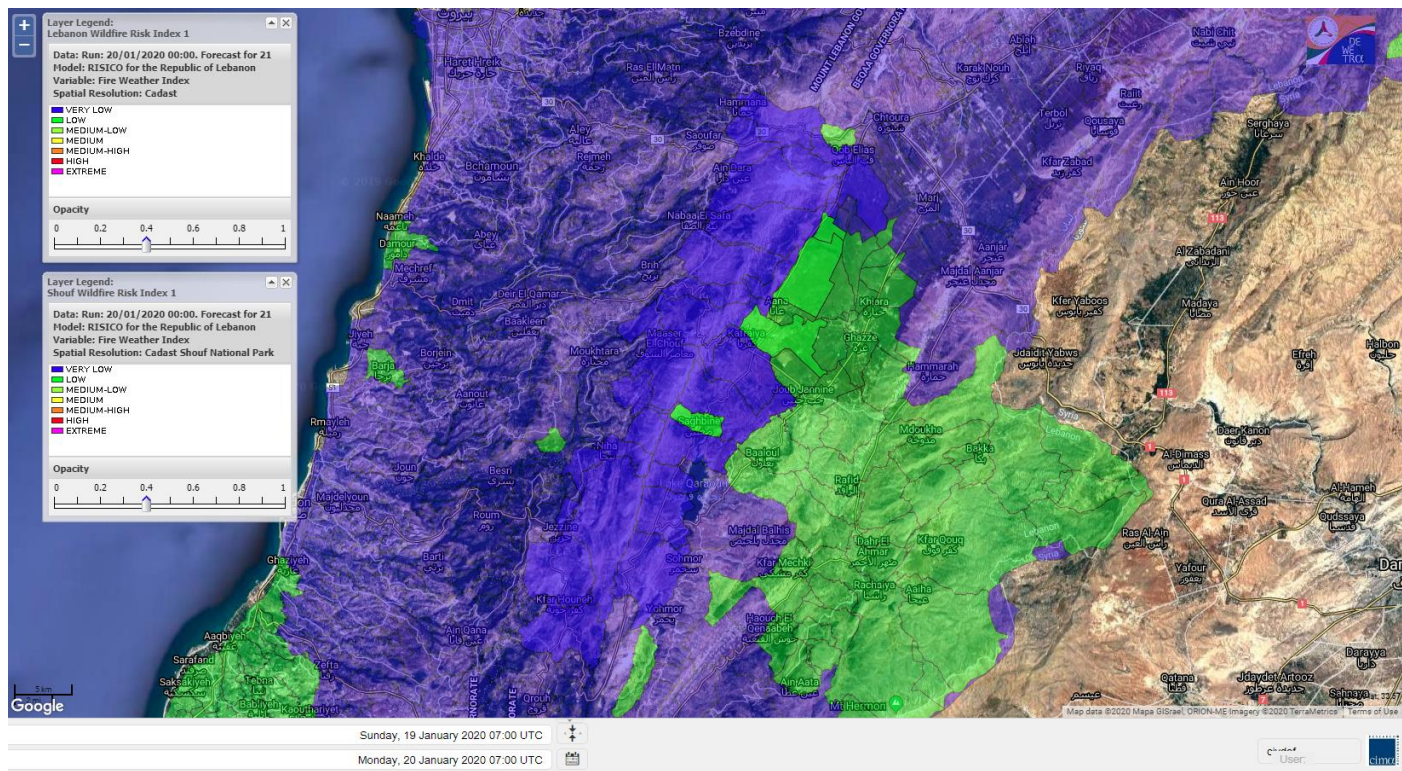
Lebanon for 22 January 2020



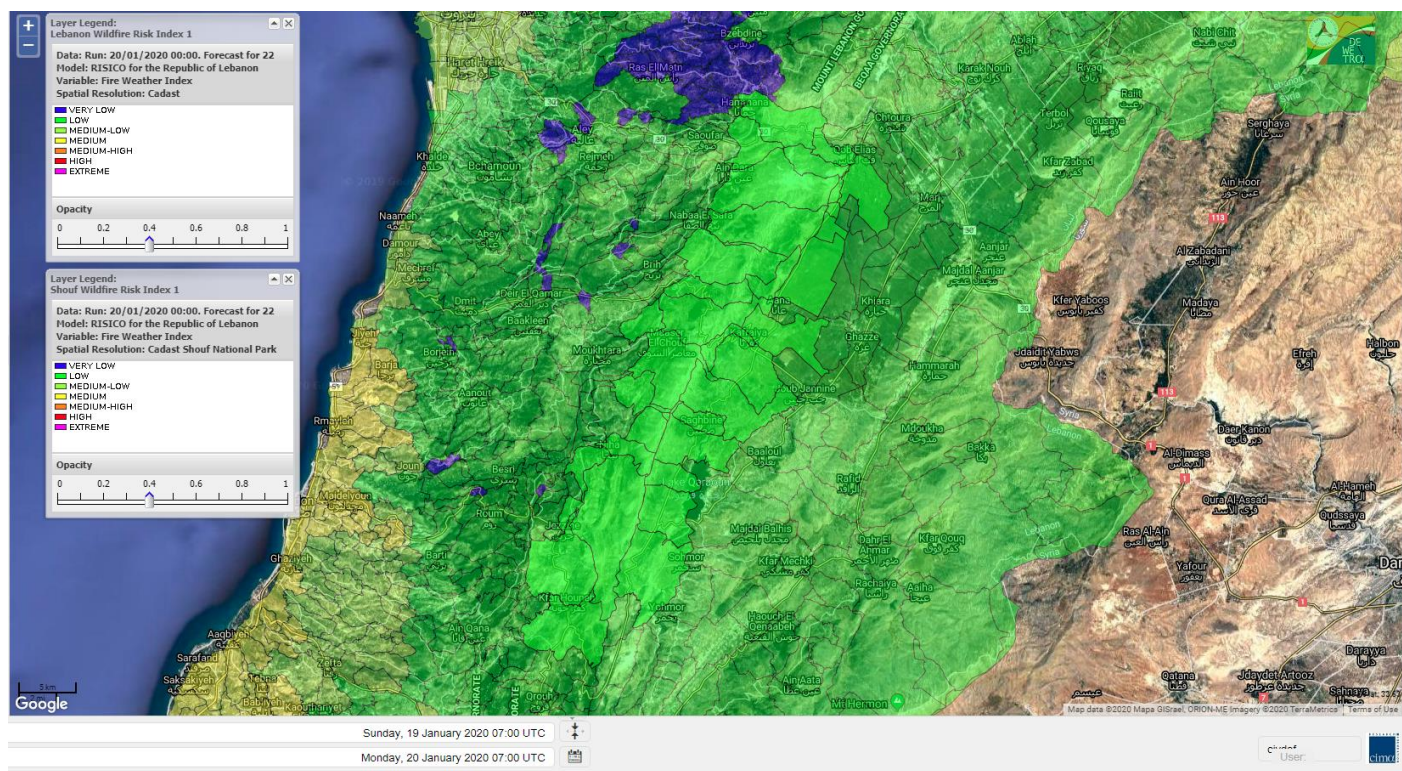
Shouf Biosphere Reserve Forecast for 20 January 2020



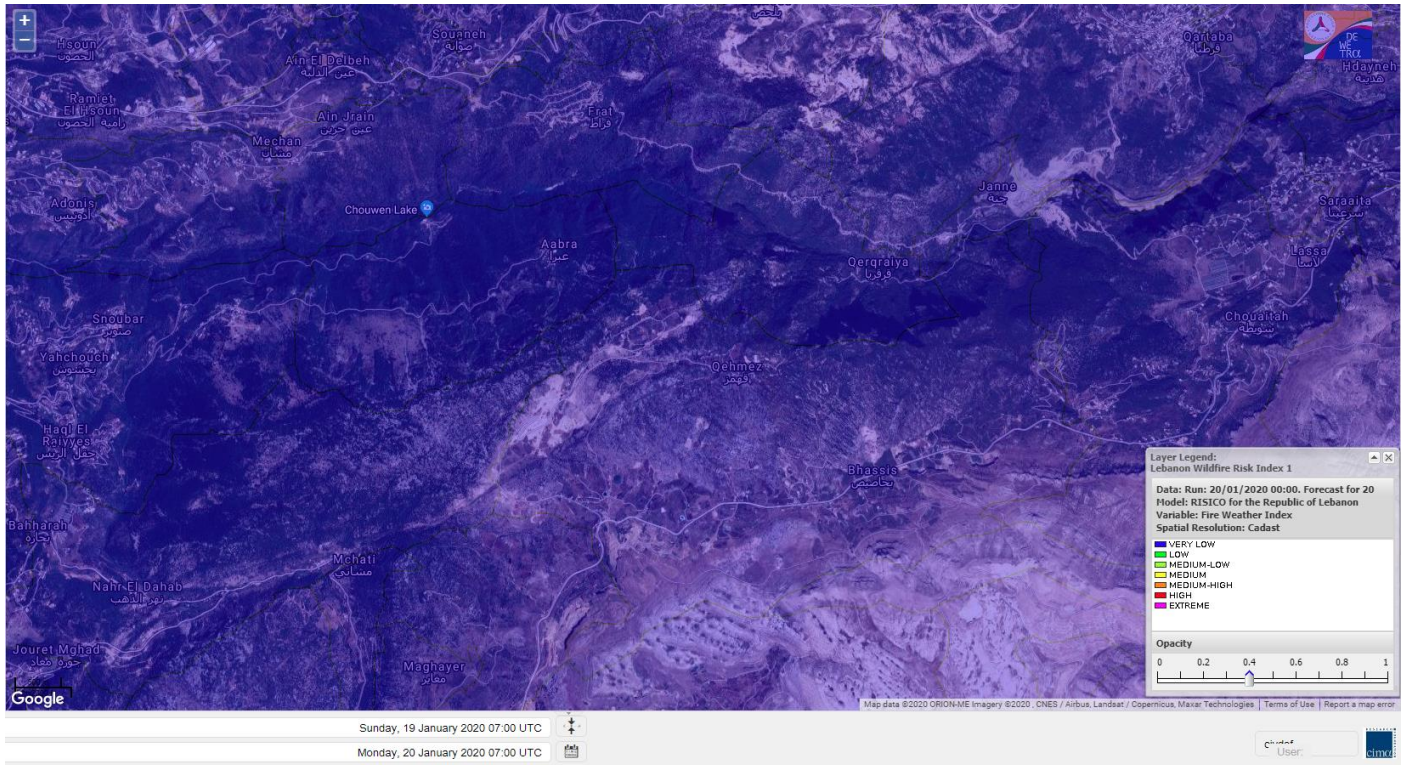
Shouf Biosphere Reserve Forecast for 21 January 2020



Shouf Biosphere Reserve Forecast for 22 January 2020



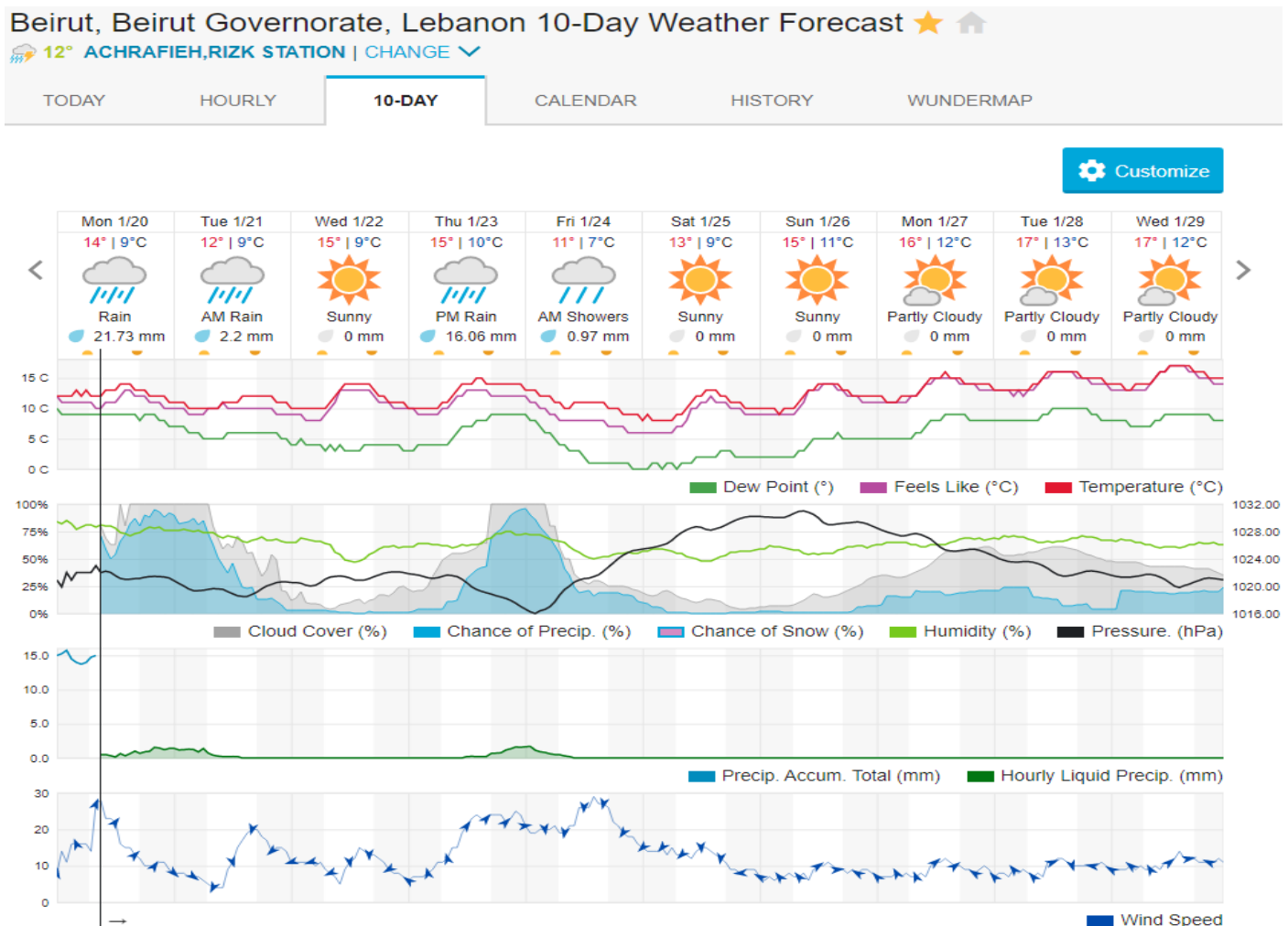
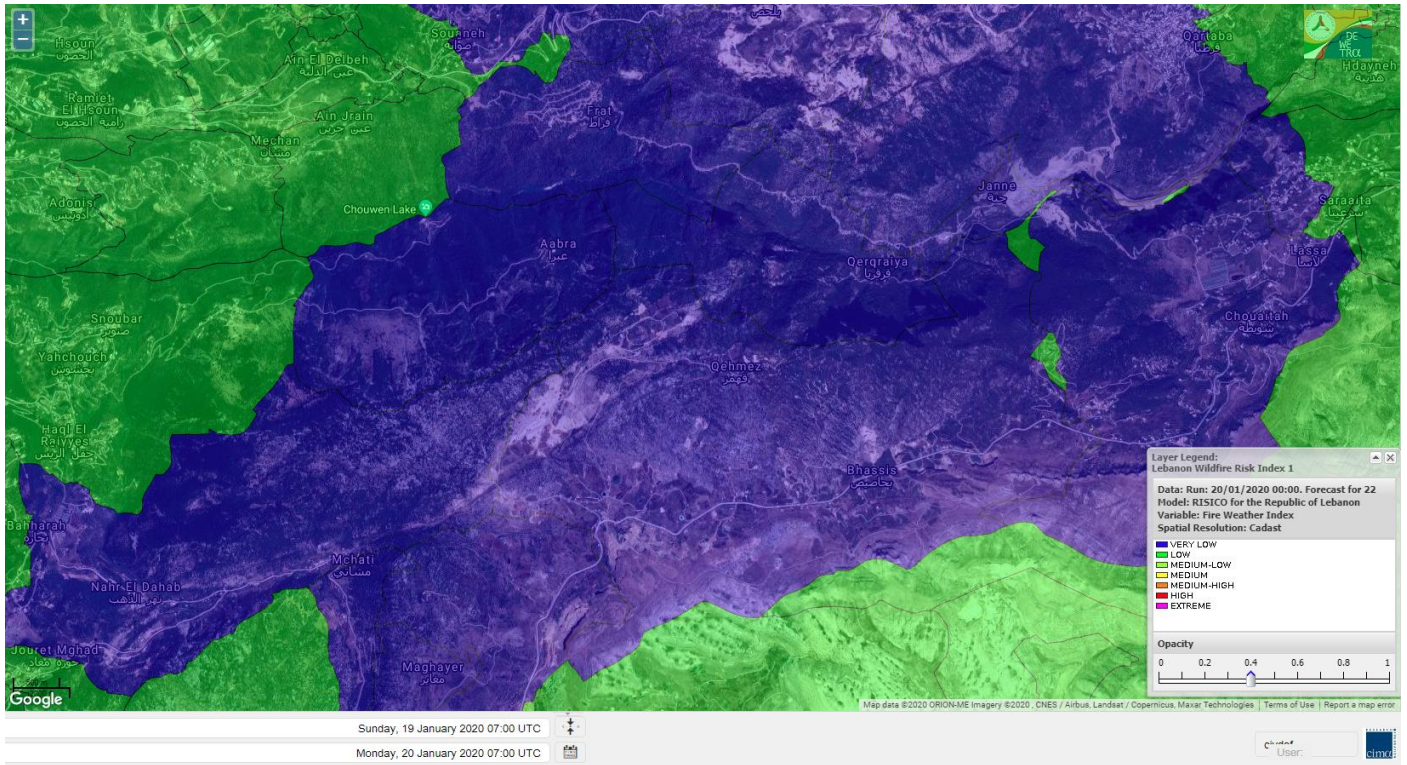
Jabal Moussa Reserve Forecast for 20 January 2020



Jabal Moussa Reserve Forecast for 21 January 2020



Jabal Moussa Reserve Forecast for 22 January 2020



Nord

Koura

Municipality	20-Jan	21-Jan	22-Jan	Municipality	20-Jan	21-Jan	22-Jan	Municipality	20-Jan	21-Jan	22-Jan
Aaba	L	L	M	Afsaddiq	L	VL	M	Ain Ekriane	L	VL	M
Amioun	L	VL	M	Anfeh	M	ML	M	Badbhoun	L	L	M
Barghoun	L	L	M	Barsa	L	L	M	Batroumine	ML	L	M
Bdebba	L	L	M	Bechmizine	L	VL	M	Bednaye El-Koura	L	L	ML
Bhabbouch El-Koura	L	VL	ML	Bkeftine	L	L	M	Bnehran	VL	VL	L
Bqaiia El-Koura	L	L	M	Bsarma	L	VL	M	Btaaboura	L	L	M
Bterram	L	VL	M	Btouratij	ML	L	M	Bziza	L	VL	M
Dar Beechtar	L	VL	M	Dar Chmezzine	L	VL	M	Deddeh	ML	L	M
Deir El-Balamand	L	L	L	Fih	L	L	M	Hraiche	ML	L	M
Ijdaabrine	L	L	ML	Kaftoun	L	L	M	Kefraya El-Koura	L	L	M
Kfarakka	L	VL	ML	Kfarhata	L	L	ML	Kfarhazir	L	L	M
Kfarkahel	L	L	M	Kfarsaroun	VL	VL	ML	Kosba	L	VL	ML
Mejdel el-Koura	L	VL	ML	Nakhle	L	L	M	Qalhat	L	L	L
Ras Masqa	ML	L	M	Rechdibbine	L	VL	ML	Zakroun	L	L	M
Zgharta El-Mtaouile	L	VL	L								

Bcharre

Municipality	20-Jan	21-Jan	22-Jan	Municipality	20-Jan	21-Jan	22-Jan	Municipality	20-Jan	21-Jan	22-Jan
Aabdine	VL	VL	L	Bane	VL	VL	L	Barhelioun	VL	VL	L
Bazooune	VL	VL	L	Becharre	VL	VL	L	Beit Menzer	VL	VL	L
Billa	VL	VL	L	Blaouza	VL	VL	L	Bqaa Kafra	VL	VL	L
Bqerqacha	VL	VL	L	Breissat	VL	VL	L	Dimane	VL	VL	L
Hadath El Jobbeh	VL	VL	VL	Hadchit	VL	VL	VL	Hasroun	VL	VL	L
Mazraat Aassaf	VL	VL	VL	Mazraat Bani Saab	VL	VL	L	Mchaa El-Jobbeh	VL	VL	L
Metrit	L	VL	ML	Moghr El-Ahoual	VL	VL	L	Ouadi Qannoubine	VL	VL	VL
Qanat	VL	VL	L	Qnayer	VL	VL	L	Tourza	VL	VL	L

Batroun

Municipality	20-Jan	21-Jan	22-Jan	Municipality	20-Jan	21-Jan	22-Jan	Municipality	20-Jan	21-Jan	22-Jan
Aabrine	L	L	L	Aalali	VL	VL	L	Aartz	VL	VL	L
Abdelli	VL	VL	L	Ajdabra	L	L	L	Assia	VL	VL	L
Basbina	L	L	ML	Batroun	L	L	M	Bcheleh	VL	VL	L
Bechtoudar	VL	VL	L	Beit Chlala	VL	VL	L	Beit Kassab	VL	VL	L
Bijdarfil	L	L	M	Bqesmaya	L	L	L	Chatine	VL	VL	VL
Chebtin	L	VL	L	Chekka	L	L	M	Daael	VL	VL	L
Dahr Abi Yaghi	VL	VL	L	Daraya El-Batroun	L	L	ML	Deir Billa	VL	VL	L
Deir Kfifane	L	L	ML	Deir Mar Youhanna EL	VL	VL	L	Deir Mar Youssef Jra	VL	VL	L
Douma	VL	VL	L	Douq	VL	VL	L	Eddeh El-Batroun	L	L	ML
Ftahat El-Batroun	VL	VL	L	Ghouma	L	VL	L	Hadtoun	VL	VL	L
Hamat	L	L	ML	Harbouna	VL	VL	L	Hardine	VL	VL	VL
Helta	VL	VL	L	Hery	L	L	M	Jebbla	VL	VL	L
Jrabta El-Batroun	L	VL	L	Jrane El-Batroun	L	L	ML	Kfar Aabida	L	L	ML
Kfar Halda	VL	VL	L	Kfarb Shlaimane	VL	VL	VL	Kfarhatna	L	VL	L

Kfarhay	L	L	M	Kfarhelos	L	L	L	Kfifane	L	L	M
Kfour El Arabi	VL	VL	L	Koubba	L	L	M	Kour	L	L	ML
Mar Mama	VL	VL	L	Masrah	VL	VL	L	Mehmarch	VL	VL	L
Mrah Chdid	L	VL	L	Mrah El Ziyat	L	VL	ML	Mrah El-Hajj	VL	VL	VL
Nahle El-Batroun	VL	VL	L	Niha El-Batroun	VL	VL	L	Oujh El-Hajjar	L	L	ML
Ouata Houb	VL	VL	VL	Qatnaaoun	L	L	ML	Racha	VL	VL	L
Rachana	L	L	L	Rachkida	L	L	ML	Ram El-Batroun	VL	VL	L
Ras Nahhach	L	L	ML	Selaata	L	L	M	Sghar	L	VL	ML
Smar Jbayl	L	VL	ML	Sourat El-Batroun	VL	VL	L	Tannourine El-Faouqa	VL	VL	L
Tannourine Et-Tahta	VL	VL	L	Thoum	L	L	ML	Toula El-Batroun	L	VL	L
Zan	VL	VL	L								

Zgharta

Municipality	20-Jan	21-Jan	22-Jan	Municipality	20-Jan	21-Jan	22-Jan	Municipality	20-Jan	21-Jan	22-Jan
Aachach	L	L	M	Aalma	L	L	M	Aarde	L	L	ML
Aintourine	VL	VL	L	Arabet Qozhaya	VL	VL	L	Arde	L	L	M
Arjis	L	VL	L	Asnoun	L	L	M	Ayto	VL	VL	L
Basloukit	VL	VL	L	Bchannine	L	L	ML	Besebeel	L	L	M
Bhairret Toula	VL	VL	VL	Bnachee	L	VL	L	Boussit	L	L	M
Danha	L	L	M	Daraiya Zgharta	L	VL	L	Deir Jdeide	L	L	M
Ehden	VL	VL	L	Halan	L	L	ML	Hariq Zgharta	L	L	M
Houakir	L	L	L	Hraiqis	L	L	M	laal	L	L	ML
Ijbaa	VL	VL	L	Karm Saddeh	VL	VL	L	Kfarchakhna	L	L	M
Kfardlaqous	L	L	M	Kfarfou	VL	VL	L	Kfarhata Zgharta	L	L	M
Kfarhoura	L	L	ML	Kfarsghab	VL	VL	L	Kfaryachit	L	L	M
Kfarzaina	L	L	M	Khaldiye	L	L	M	Mazraat Ajbeaa	L	L	M
Mazraat Et-Teffah	VL	VL	L	Mazraat Jneid	L	VL	M	Mejdlaia Zgharta	L	L	M
Merh Kfarsghab	L	VL	L	Miryata	L	L	M	Miziara	VL	VL	L
Mzraat Kefraya	L	L	ML	Qorah Bach	L	L	M	Rachiine	L	L	M
Ras Kifa	VL	VL	L	Sakhra	L	L	ML	Sebhel Zgharta	VL	VL	L
Serhel	VL	VL	VL	Tallet Zgharta	L	L	ML	Toula Zgharta	VL	VL	L
Zgharta	L	L	M								

Minieh-Denniye

Municipality	20-Jan	21-Jan	22-Jan	Municipality	20-Jan	21-Jan	22-Jan	Municipality	20-Jan	21-Jan	22-Jan
Aasaymout	VL	VL	VL	Aaymar	VL	VL	L	Aazki	L	VL	L
Ain El-Tineh-Miniyeh	VL	VL	VL	Assoun	VL	VL	L	Bakhaaoun	VL	VL	L
Bchennata	VL	VL	L	Bechehhara	VL	VL	L	Beddawi	L	L	M
Behouaita	VL	VL	L	Beit El Foqss	VL	VL	VL	Beit Haouik	VL	VL	VL
Beit Zoud	VL	VL	L	Bekaasafrine	VL	VL	L	Borj El Yahoudiyeh	L	L	M
Bqarsouna	VL	VL	VL	Btermaz	VL	VL	VL	Debaael	VL	VL	VL
Deir Ammar	L	L	M	Deir Nbouh	L	L	ML	Haouaret-Miniyeh	VL	VL	VL
Haql el Azimeh	VL	VL	VL	Harf El Siyad	VL	VL	VL	Hazmiye-Miniyeh	VL	VL	VL
Izal	VL	VL	L	Jarjour	VL	VL	L	Jayroun	VL	VL	VL
Kahf El-Malloul	VL	L	L	Karm El-Moher	VL	VL	L	Kfar Binine	VL	VL	VL
Kfarchalane	VL	VL	VL	Kfarhabou	L	VL	L	Kharroub-Miniyeh	VL	VL	L
Mazraat El-Kreme	VL	VL	L	Mazraat Ketrane	VL	VL	L	Merkebta	L	L	M

Minyeh	L	L	M	Mrah El Sfirat	VL	VL	VL	Mrah Sraj	VL	VL	VL
Mrebbine	VL	VL	L	Nabi Youcheaa	L	L	M	Nemrine	VL	VL	VL
Qarhaiya	L	VL	VL	Qarne	VL	VL	VL	Qarsita	VL	VL	VL
Qattineh-Miniyeh	VL	VL	VL	Qemmamine	VL	VL	VL	Qraine	VL	VL	VL
Raouda-Aadoua	L	L	M	Rihaniyet-Miniyeh	L	L	M	Sfireh	VL	VL	VL
Sir Ed-Danniyeh	VL	VL	VL	Tarane	VL	VL	VL	Terbol-Miniyeh	L	L	M
Zaghartaghriine	L	L	L	Zouq Bhannine	L	L	M				

Nabatiye

Nabatiye

Municipality	20-Jan	21-Jan	22-Jan	Municipality	20-Jan	21-Jan	22-Jan	Municipality	20-Jan	21-Jan	22-Jan
Aabba	VL	L	L	Aazzi	VL	VL	ML	Adchit El-Chqif	VL	L	L
Ain Bou Swar	VL	VL	L	Ain Kana	VL	VL	L	Ali El-Taher	VL	VL	L
Ansar	VL	L	M	Arab Salim	VL	VL	L	Arnoun	VL	VL	ML
Bfaroue	VL	VL	L	Breyqaah	VL	L	L	Charqiyeh	VL	VL	L
Choukine	VL	VL	L	Deir El Zahrani	VL	VL	L	Doueir El-Nabatiyeh	VL	VL	L
Habbouch El-Nabatiye	VL	VL	ML	Hamra El-Nabatiyeh	VL	VL	M	Harouf El-Nabatiyeh	VL	VL	L
Hmaile	VL	VL	L	Houmin El Faouqa	VL	VL	L	Houmin El Tahta	VL	VL	ML
Jarjough	VL	VL	L	Jbaah El-Nabatiyeh	VL	VL	L	Jebchit	VL	VL	L
Kfar Djal El-Nabatiy	VL	VL	L	Kfar Remmane	VL	VL	L	Kfar Sir	VL	L	L
Kfar Tebnit	VL	VL	ML	Kfarfila	VL	VL	L	Kfour El-Nabatieh	VL	VL	L
Mayfadoun	VL	VL	M	Mazraat Bsaffour	VL	VL	L	Mazraat Chalbaal	VL	L	L
Mazraat Dmoul	VL	L	L	Mazraat El Khreibeh	VL	VL	ML	Mazraat El-Bayad El-	VL	VL	ML
Mazraat Kfarjaouz	VL	VL	ML	Mazraat Qalaat Meiss	VL	L	ML	Nabatiyeh El-Fawka	VL	VL	ML
Nabatiyeh Et-Tahta	VL	VL	ML	Namiriyeh	VL	VL	L	Qaaqaiyet El Jisr	VL	L	L
Qossaibeh El-Nabatiy	VL	L	L	Roumine	VL	VL	ML	Sarba El-Nabatieh	VL	VL	L
Sir El-Gharbiyeh	VL	VL	L	Toul	VL	VL	L	Yehmor El-Nabatiyeh	VL	VL	M
Zaoutar El Charkiyeh	VL	VL	M	Zaoutar El-Gharbiyeh	VL	L	L	Zebdine El-Nabatiyeh	VL	VL	ML
Zefta	VL	VL	ML								

Hasbaiya

Municipality	20-Jan	21-Jan	22-Jan	Municipality	20-Jan	21-Jan	22-Jan	Municipality	20-Jan	21-Jan	22-Jan
Aain Jarfa	VL	VL	L	Abou Qamha	VL	VL	L	Ain Qania	VL	VL	L
Bourghos	VL	VL	L	Chebaa	VL	VL	L	Chouaya Hasbaya	VL	VL	L
Dellafeh	VL	VL	L	Fardiss Hasbaiya	VL	VL	L	Hasbaya	VL	VL	L
Hbariyeh	VL	VL	L	Kaoukaba Hasbaiya	VL	VL	L	Kfar Chouba	VL	VL	L
Kfar Hamam	VL	VL	L	Kfeir El-Zait	VL	VL	L	Khalwat Hasbaya	VL	VL	L
Khreibet Hasbaiya	VL	VL	L	Majidiyeh Hasbaiya	VL	VL	L	Marj Ez-Zhour (Haouc	VL	VL	L
Meri	VL	VL	ML	Mimass	VL	VL	L	Rachaiya El-Fokhar	VL	VL	L
Salaiyeb	VL	VL	ML								

Marjayoun

Municipality	20-Jan	21-Jan	22-Jan	Municipality	20-Jan	21-Jan	22-Jan	Municipality	20-Jan	21-Jan	22-Jan
Aalmane Marjaayoun	VL	VL	L	Aamra	VL	VL	ML	Adayseh Marjaayoun	VL	L	ML
Adchit El-Koussair	VL	VL	ML	Ain Aarab Marjaayoun	VL	VL	ML	Bani Haiyann	VL	L	ML
Blatt Marjaayoun	VL	VL	L	Blida	VL	L	L	Borj El-Moulouk	VL	VL	ML

Boueyda Marjaayoun	VL	VL	L	Deir Mimass	VL	VL	ML	Deir Siriane	VL	VL	ML
Dibbine	VL	VL	L	Ebel El Saqi	VL	VL	L	Houla	VL	L	L
Houra	VL	VL	ML	Kfar Kila	VL	VL	M	Khiam Marjaayoun	VL	VL	ML
Klayaa	VL	VL	ML	Majdel Selem	VL	L	L	Marjaayoun	VL	VL	L
Markaba	VL	L	L	Mays El-Jabal	VL	L	L	Mazraat Doumiat	VL	VL	ML
Mazraat Sarada	VL	VL	ML	Mhaibib	VL	L	ML	Qabrikha	VL	L	L
Qantara	VL	VL	L	Rab El-Thalathine	VL	L	M	Saouaneh Marjayoun	VL	L	L
Talloussa	VL	L	L	Taybeh Matjaayoun	VL	VL	M	Touline	VL	L	L

Bent Jbail

Municipality	20-Jan	21-Jan	22-Jan	Municipality	20-Jan	21-Jan	22-Jan	Municipality	20-Jan	21-Jan	22-Jan
Ain-Ebel	VL	L	L	Aitaroun	VL	L	L	Aynata Bint Jbeil	VL	L	L
Ayta El-Chaeb	VL	VL	L	Ayta El-Jabal	VL	L	L	Beit Lif	VL	VL	L
Beit Yahoun	VL	L	L	Bint Jbeil	VL	L	L	Borj Qalaway	VL	L	L
Braachit	VL	L	L	Chakra	VL	L	L	Debel	VL	L	L
Deir Antar	VL	L	L	Froun	VL	L	L	Ghandouriyeh Bint Jb	VL	L	L
Hanine	VL	L	L	Hariss	VL	L	L	Hdatha	VL	L	L
Jmeyjmeh	VL	L	L	Kafra Bint Jbeil	VL	VL	L	Kfar Dounine	VL	L	L
Khirbet Selm	VL	L	L	Kounine	VL	L	L	Maroun El Ras	VL	L	L
Qalaway	VL	L	L	Qaouzah	VL	VL	L	Qatmoun	VL	L	L
Ramya Bint Jbeil	VL	VL	L	Rchaf	VL	L	L	Rmeich	VL	L	L
Safad Al Battikh	VL	L	L	Salhaneh	VL	VL	L	Serbine	VL	VL	L
Sultanieh Bint Jbeil	VL	L	L	Tibnine	VL	L	L	Tiri	VL	L	L
Yaroun	VL	L	L	Yater	VL	VL	L				

Mont Liban

Jbail

Municipality	20-Jan	21-Jan	22-Jan	Municipality	20-Jan	21-Jan	22-Jan	Municipality	20-Jan	21-Jan	22-Jan
Aabeydat	VL	VL	L	Aalita	VL	VL	L	Aamchit	L	L	M
Aarab El-Lahib	VL	VL	VL	Aarasta	VL	VL	VL	Adonis Jbeil	VL	VL	L
Afqa Jbeil	VL	VL	L	Ain El Delbeh Jbeil	VL	VL	L	Ain El-Ghouyba	VL	VL	VL
Ain Jrain	VL	VL	L	Ain Kfah	L	VL	ML	Almat El Chemaliyat	VL	VL	VL
Almat El-Jenoubiya	VL	VL	VL	Aqoura	VL	VL	L	Bayzoun	VL	VL	L
Bchille Jbeil	VL	VL	L	Bechtlida	VL	VL	L	Behdaydat	VL	VL	L
Beit Habbaq	L	VL	ML	Bejjeh	L	VL	ML	Bekhaaz	L	L	ML
Berbara Jbeil	L	L	M	Bintael	VL	VL	L	Birket Hjoula	VL	VL	L
Blatt Jbeil	VL	VL	L	Boulhos	VL	VL	VL	Breyj Jbeil	VL	VL	L
Chamat	L	VL	M	Chikhane	L	L	M	Chmout	VL	VL	L
Eddeh Jbeil	L	L	L	Ehmej	VL	VL	L	Fatre	VL	VL	L
Ferhet	VL	VL	L	Fghal	L	L	L	Frat	VL	VL	VL
Ghabat	VL	VL	L	Ghalboun	L	VL	ML	Gharzouz	L	L	ML
Ghofrine	L	L	ML	Habil	VL	VL	L	Halate	VL	L	L
Haqel	VL	VL	L	Hbaline	L	VL	ML	Hboub	VL	VL	L
Hdeine	VL	VL	L	Hema Er-Rehban	VL	VL	L	Hema Mar Maroun Aann	VL	VL	VL
Hjoula	VL	VL	L	Hosrayel	L	L	ML	Hsarat	L	VL	ML

Hsoun	VL	VL	L	Jaj	VL	VL	L	Janne	VL	VL	VL
Jbeil	L	L	M	Jeddeyel Jbeil	L	L	M	Jlisse	VL	VL	L
Jouret El-Qattine	VL	VL	L	Kfar Baal Annaya	VL	VL	L	Kfar Kidde	L	L	ML
Kfar Kouas	VL	VL	L	Kfar Mashoun	L	VL	ML	Kfoun	VL	VL	L
Kharbe Jbeil	L	L	ML	Laqlouq	VL	VL	L	Lassa	VL	VL	VL
Lehfed	VL	VL	L	Maad	L	VL	ML	Mar Sarkis	VL	VL	L
Mastita	VL	L	M	Mayfouq	VL	VL	L	Mazraat El Siyad	VL	VL	L
Mazraat El-Maaden	VL	VL	VL	Mechane	VL	VL	L	Mechmech Jbeil	VL	VL	L
Mehrin	VL	VL	L	Mejdel El-Akoura	VL	VL	L	Mghayreh Jbeil	VL	VL	L
Mounsef	L	L	M	Nahr Ibrahim	L	L	M	Qahmez	VL	VL	VL
Qartaba	VL	VL	VL	Qartaboun	VL	L	M	Qattara Jbeil	VL	VL	L
Qorqraya	VL	VL	VL	Ramout	L	VL	ML	Ras Osta	VL	VL	L
Rihane Jbeil	L	L	M	Sakiet El-Khayt	VL	VL	L	Saqi Richmaya	VL	VL	L
Sebrine	VL	VL	L	Seraita	VL	VL	L	Souane Jbeil	VL	VL	L
Tadmor	VL	VL	L	Tartej	VL	VL	L	Torzaiya	VL	VL	L
Yanouh Jbeil	VL	VL	L	Zibidine Jbeil	VL	VL	L				

El Metn

Municipality	20-Jan	21-Jan	22-Jan	Municipality	20-Jan	21-Jan	22-Jan	Municipality	20-Jan	21-Jan	22-Jan
Aain El-Qabu	VL	VL	L	Aain El-Qach	VL	VL	L	Aain El-Teffaha	VL	VL	VL
Aain el-Safssaf El-M	VL	VL	VL	Abou Mizane	VL	VL	VL	Ain Aar	VL	VL	L
Ain Alaq	VL	VL	L	Ain El-Kharroube	VL	VL	L	Ain El-Sendianeh	VL	VL	L
Ain El-Zeitoune	VL	VL	VL	Ain Saadeh	VL	VL	L	Aintoura El-Matn	VL	VL	L
Amaret Chalhoub	VL	VL	L	Antelias	VL	VL	L	Atchaneh	VL	VL	L
Ayroun	VL	VL	VL	Baabdat	VL	VL	VL	Baouchariyeh	VL	VL	ML
Baskinta	VL	VL	L	Beit Chabab	VL	VL	L	Beit El-Chaar	VL	VL	L
Beit El-Kekko	VL	VL	L	Beit Mery	VL	VL	L	Bhersaf	VL	VL	VL
Bikfaya	VL	VL	VL	Biyakout	VL	VL	L	Bnabil	VL	VL	VL
Bourj Hammoud	VL	VL	ML	Bqennaya	VL	VL	L	Broummana El-Matn	VL	VL	L
Bsalim	VL	VL	L	Bsifrine	VL	VL	VL	Bteghrine	VL	VL	VL
Chaouiye	VL	VL	L	Chouaya El-Matn	VL	VL	L	Choueir	VL	VL	VL
Chrine	VL	VL	VL	Dahr El Sawan El-Mat	VL	VL	L	Daychouniyeh	VL	VL	L
Dbayeh	VL	VL	L	Deir Chamra	VL	VL	VL	Deir Mar Abda el Mch	VL	VL	L
Deir Mar Roukouz	VL	VL	L	Deir Tamiche	VL	VL	L	Dik El-Mehdi	VL	VL	L
Dikwaneh	VL	VL	ML	Douar El-Matn	VL	VL	VL	Fanar	VL	VL	L
Fraike	VL	VL	L	Haret El-Ballaneh	VL	VL	L	Hbous	VL	VL	L
Himlaya	VL	VL	VL	Jal El Did	VL	VL	L	Jdeideh El-Metn	VL	VL	L
Jouar El-Matn	VL	VL	VL	Jouret El-Ballout	VL	VL	L	Kaaqour	VL	VL	VL
Kfar Aaqab	VL	VL	VL	Kfertay El-Matn	VL	VL	VL	Khenchara	VL	VL	VL
Khillet El-Mtain	VL	VL	VL	Konnabat Broummana	VL	VL	L	Konnabat Salima	VL	VL	VL
Machraah El-Matn	VL	VL	VL	Majdel Tarchich	VL	VL	L	Majzoub	VL	VL	L
Mansouriyeh El-Metn	VL	VL	L	Mar Boutros Karm Et-	VL	VL	VL	Mar Chaya et Mzekke	VL	VL	L
Mar Moussa Ed-Douar	VL	VL	VL	Marjaba	VL	VL	VL	Masqa	VL	VL	VL
Mayasse	VL	VL	VL	Mazraat Deir Aoukar	VL	VL	L	Mazraat El-Hadirat	VL	VL	L
Mazraat Yachouh	VL	VL	L	Mchikha	VL	VL	L	Menqlet Mezher	VL	VL	L
Mhayseh Matn	VL	VL	VL	Mkalles	VL	VL	ML	Mrouj	VL	VL	L

Mtain	VL	VL	L	Mtayleb	VL	VL	L	Nabay	VL	VL	L
Naccache	VL	VL	L	Ouadi Chahine	VL	VL	VL	Ouadi El-Karm El-Mat	VL	VL	VL
Ouata El-Mrouj	VL	VL	VL	Ouyoun El-Matn	VL	VL	VL	Qornet Chehwan	VL	VL	L
Qornet El-Hamra	VL	VL	L	Roumieh	VL	VL	L	Sfeilet Bikfaya	VL	VL	VL
Sinn El-Fil	VL	VL	ML	Zabbougha	VL	VL	VL	Zalqa	VL	VL	L
Zarououn	VL	VL	VL	Zekrite	VL	VL	L	Zighrine El-Matn	VL	VL	VL
Zouk El-Khrab	VL	VL	L								

Chouf

Municipality	20-Jan	21-Jan	22-Jan	Municipality	20-Jan	21-Jan	22-Jan	Municipality	20-Jan	21-Jan	22-Jan
Aalmane El-Chouf	VL	VL	M	Aammq El-Chouf	VL	VL	L	Ain Ouzein	VL	VL	L
Ain Qani	VL	VL	L	Ain Zhalta	VL	VL	L	Ainbal	VL	VL	L
Amatour	VL	VL	L	Anout	VL	VL	L	Atrine	VL	VL	L
Baadarane	VL	VL	L	Baaqline	VL	VL	L	Baasir	VL	L	M
Barja	VL	VL	M	Barouk	VL	VL	L	Bater	VL	VL	L
Batloun	VL	VL	L	Bayqoun	VL	L	L	Bchetfine	VL	VL	L
Beiteddine	VL	VL	L	Benouati Ech-Chouf	VL	VL	L	Berjein	VL	VL	L
Bireh et Mtalleh	VL	VL	L	Biret El-Chouf	VL	VL	L	Bkechtine Ouel Mchei	VL	VL	L
Bkifa El-Chouf	VL	VL	L	Botme	VL	VL	L	Bqaiia Ech-Chouf	VL	VL	L
Bsaba El-Chouf	VL	VL	L	Chammis El-Chouf	VL	VL	ML	Chehim	VL	VL	L
Chemaarine	VL	VL	L	Chourit	VL	VL	VL	Daher El-Chouf	VL	VL	L
Dalhoun	VL	VL	L	Damour	VL	VL	ML	Daraya El-Chouf	VL	VL	L
Deir El-Moukhalles	VL	VL	L	Deir Baba	VL	VL	L	Deir Dourit	VL	VL	L
Deir El-Qamar	VL	VL	L	Deir Kouche	VL	VL	L	Dibbieh	VL	VL	L
Dmit	VL	VL	L	Fouara Jaafar	VL	VL	L	Fraidis El-Chouf	VL	VL	L
Ghabet Jaafar	VL	VL	L	Gharife	VL	VL	L	Haret Jandal	VL	VL	L
Hasrout	VL	VL	L	Jadra	VL	VL	M	Jahlieh	VL	VL	L
Jbeih El-Chouf	VL	VL	L	Jdeidet El-Chouf	VL	VL	L	Jiyeh	VL	VL	M
Jleilyeh	VL	VL	L	Jmailiyeh	VL	VL	ML	Joun	VL	VL	L
Kahlounie El-Chouf	VL	VL	L	Ketermaya	VL	VL	M	Kfar Faqoud	VL	VL	L
Kfar Hamal	VL	VL	L	Kfar Him	VL	VL	L	Kfar Katra	VL	VL	L
Kfar Niss	VL	VL	L	Kfar hay	VL	VL	L	Kfarnabrakh	VL	VL	L
Khirbet Bisri	VL	VL	L	Knayse El-Chouf	VL	VL	VL	Maaniyeh	VL	VL	ML
Maasser Beiteddine	VL	VL	L	Maasser El-Chouf	VL	VL	L	Majdalouna	VL	VL	ML
Majdel El-Meouch	VL	VL	L	Mazboud	VL	VL	L	Mazmoura	VL	VL	L
Mazraat El Chouf	VL	VL	L	Mazraat El Daher	VL	VL	L	Mazraat El-Douair	VL	VL	VL
Mechref	VL	VL	L	Mghairie	VL	VL	ML	Mghayrie El-Chouf	VL	VL	L
Moukhtara	VL	VL	L	Mrusti	VL	VL	L	Mtolle	VL	VL	L
Naameh	VL	L	ML	Niha El-Chouf	VL	VL	L	Ouadi Abou Youssef	VL	VL	VL
Ouadi Ed-Deir	VL	VL	L	Ouadi El-Sit	VL	VL	L	Ouadi bnehlay	VL	VL	L
Qraibeh	VL	VL	L	Qreiaa	VL	VL	VL	Rmayle El-Chouf	VL	VL	M
Semqaniyeh	VL	VL	L	Sibline	VL	VL	M	Sirjbeil	VL	VL	L
Warhanieh	VL	VL	L	Werdaniyeh	VL	VL	M	Zaarourieh	VL	VL	L

Baabda

Municipality	20-Jan	21-Jan	22-Jan	Municipality	20-Jan	21-Jan	22-Jan	Municipality	20-Jan	21-Jan	22-Jan
Abadiyeh	VL	VL	L	Ain Mouaffaq	VL	VL	L	Araiya	VL	VL	L

Arbaniyeh	VL	VL	VL	Arsoun	VL	VL	VL	Baabda	VL	VL	L
Baalchmey	VL	VL	L	Bmaryam	VL	VL	L	Bourj El-Brajneh	VL	VL	L
Boutchay	VL	VL	L	Bsaba Baabda	VL	VL	L	Btekhney	VL	VL	VL
Btibyat	VL	VL	VL	Bzbedine	VL	VL	VL	Chbeniyeh	VL	VL	L
Chiyah	VL	VL	ML	Chmeisset Baabda	VL	VL	VL	Chouit	VL	VL	VL
Deir El-harf	VL	VL	VL	Deir Khouna	VL	VL	L	Dlaybeh	VL	VL	VL
Falougha	VL	VL	L	Furn El-Chebbak	VL	VL	ML	Hadath Beyrouth	VL	VL	L
Halaliyeh Baabda	VL	VL	VL	Hammana	VL	VL	L	Haret El Sett	VL	VL	L
Haret Hamze	VL	VL	L	Haret Hreik	VL	VL	ML	Hasbaiya El-Metn	VL	VL	VL
Jouar El-Hoz	VL	VL	VL	Jouret Arsoun	VL	VL	VL	Kfar Chima	VL	VL	L
Kfar Selouane	VL	VL	L	Khalouat Baabda	VL	VL	L	Kneisset Baabda	VL	VL	VL
Laylakeh	VL	VL	L	Louayzeh Baabda	VL	VL	L	Merdache	VL	VL	L
Mzairaa Baabda	VL	VL	VL	Ouadi Chahrour El Ol	VL	VL	L	Ouadi Chahrour El So	VL	VL	L
Qalaa Baabda	VL	VL	L	Qhraybe Baabda	VL	VL	L	Qobbayaa	VL	VL	L
Qornayel	VL	VL	VL	Qortada	VL	VL	VL	Qrayeh Baabda	VL	VL	L
Qsaibeh Baabda	VL	VL	VL	Qtale Baabda	VL	VL	L	Ras El Metn	VL	VL	L
Ras El-Haref	VL	VL	L	Rouayset El-Ballout	VL	VL	L	Salima Baabda	VL	VL	VL
Tahouitat El Ghadir	VL	VL	L	Tarchich	VL	VL	L	Zandouqa	VL	VL	VL

Aley

Municipality	20-Jan	21-Jan	22-Jan	Municipality	20-Jan	21-Jan	22-Jan	Municipality	20-Jan	21-Jan	22-Jan
Abey	VL	VL	L	Aghmid	VL	VL	L	Ain Dara	VL	VL	L
Ain Drafil	VL	VL	L	Ain El Halazoun	VL	VL	L	Ain El-Rmmaneh	VL	VL	VL
Ain Jedideh	VL	VL	L	Ain Ksour	VL	VL	L	Ain Onoub	VL	VL	L
Ain Traz	VL	VL	L	Ainab	VL	VL	L	Aley	VL	VL	L
Aramoun	VL	VL	L	Aytat	VL	VL	L	Azouniyeh	VL	VL	L
Baawerta	VL	VL	L	Badghan Oua Wadi Bad	VL	VL	L	Bassatine	VL	VL	L
Bayssour	VL	VL	L	Bchamoun	VL	VL	L	Bdadoun	VL	VL	L
Behouara	VL	VL	L	Bennay	VL	VL	L	Bhamdoun El-Dayaa	VL	VL	L
Bhamdoun El-Mhatta	VL	VL	L	Bkhechthey	VL	VL	L	Bleibel	VL	VL	L
Bmaknine	VL	VL	L	Bmehray	VL	VL	L	Bouzrid	VL	VL	VL
Bserrine	VL	VL	L	Bsous	VL	VL	VL	Btalloun	VL	VL	L
Btater	VL	VL	L	Chanay	VL	VL	L	Charoun	VL	VL	L
Chartoun	VL	VL	L	Chemlane	VL	VL	L	Choueifat El-Aamrous	VL	VL	L
Choueifat El-Oumara	VL	VL	L	Choueifat El-Quoubbe	VL	VL	L	Dakkoun	VL	VL	L
Deir Qoubel	VL	VL	L	Dfoun	VL	VL	L	Douair El Remmaneh	VL	VL	VL
Ghaboun	VL	VL	L	Habramoun	VL	VL	VL	Homs Oua Hama	VL	VL	L
Houmal	VL	VL	L	Jisr El Qadi	VL	VL	L	Kehaleh	VL	VL	VL
Keyfoun	VL	VL	L	Kfar Aamey	VL	VL	L	Kommatyeh	VL	VL	L
Maasrati	VL	VL	L	Majdel Baana	VL	VL	L	Mansourieh et Ain El	VL	VL	L
Mazraat El-Nahr	VL	VL	L	Mchakhte	VL	VL	L	Mecherfeh	VL	VL	L
Mejdlaya	VL	VL	L	Mrayjat	VL	VL	L	Ramliyah	VL	VL	L
Rechmaya	VL	VL	L	Rejmeh	VL	VL	L	Remhala	VL	VL	L
Rouayset El Neemane	VL	VL	L	Saoufar	VL	VL	L	Selfaya	VL	VL	VL
Sirhmoul	VL	VL	L	Souq El Ghareb	VL	VL	L	Taazanieh	VL	VL	L

Kesrouane

Municipality	20-Jan	21-Jan	22-Jan	Municipality	20-Jan	21-Jan	22-Jan	Municipality	20-Jan	21-Jan	22-Jan
Achkout	VL	VL	L	Adma Oua Dafneh	VL	VL	L	Ain Ed-Delbe Kesroua	VL	VL	VL
Ain El-Rihane	VL	VL	L	Aintoura Kesrouane	VL	VL	L	Ajaltoun	VL	VL	L
Akaybeh Kesrouane	L	L	M	Aramoun Kesrouane	VL	VL	L	Azra ouel Ozor	VL	VL	L
Ballouneh	VL	VL	L	Batha	VL	VL	L	Bekaatat Achkout	VL	VL	L
Bekaatat Kanaan	VL	VL	VL	Bizhel	VL	VL	L	Bouar	VL	L	ML
Bqaatouta	VL	VL	VL	Bqaq Ed-Dine	VL	L	ML	Bzommar	VL	VL	L
Chahtoul	VL	VL	L	Chnaniir	VL	VL	L	Chouan	VL	VL	VL
Daraya Kesrouane	VL	VL	L	Darououn	VL	VL	L	Deir Baqlouch	VL	VL	L
Diebta	VL	VL	VL	Eghbeh	VL	VL	VL	Faraya	VL	VL	L
Fatka	VL	VL	L	Feytroun	VL	VL	VL	Ghazir	VL	VL	L
Ghbaleh Kesrouane	VL	VL	L	Ghedrass	VL	VL	L	Ghosta	VL	VL	L
Ghyneh	VL	VL	L	Harharaya w Kattine	VL	VL	L	Harissa Kesrouane	VL	VL	L
Hayata	VL	VL	VL	Hosein	VL	VL	L	Hrajel	VL	VL	L
Jdeideh Ghazir	VL	VL	L	Jeita	VL	VL	L	Jounieh Ghadir	VL	VL	L
Jounieh Haret Sakhr	VL	VL	ML	Jounieh Salel Alma	VL	VL	L	Jounieh Sarba	VL	VL	ML
Jouret Bedrane	VL	VL	L	Jouret Mhad	VL	VL	L	Jouret Termos	VL	VL	L
Kfar Debiane	VL	VL	VL	Kfar Tay Kesrouane	VL	VL	VL	Kfar Yassine	VL	VL	ML
Kfour Kesrouane	VL	VL	L	Kharayeb Nahr Ibrahi	VL	L	L	Klayaat Kesrouane	VL	VL	VL
Maarab	VL	VL	VL	Maaysra Kesrouane	VL	VL	L	Mayrouba	VL	VL	VL
Mazraat Er-Ras	VL	VL	L	Mazraat Mrah El-Mir	VL	VL	VL	Mchaa El Ftouh	VL	VL	L
Mchaa Faraya	VL	VL	L	Mchaa Kfar Dibiane	VL	VL	L	Mghaer	VL	VL	VL
Mradiyah	VL	VL	L	Nahr Ed-Dahab	VL	VL	VL	Nammoura Kesrouane	VL	VL	L
Ouata El Jaouz	VL	VL	L	Ouata Sillam	VL	VL	ML	Raachine	VL	VL	VL
Rayfoun	VL	VL	L	Safra Kesrouane	VL	VL	ML	Shayle Kesrouane	VL	VL	L
Tabarja	VL	VL	L	Yahchouch	VL	VL	L	Zaaytreh	VL	VL	L
Zeytoun	VL	VL	L	Zouk Mikael	VL	VL	ML	Zouk Mosbeh	VL	VL	ML

Baalbek_Hermel

Baalbek

Municipality	20-Jan	21-Jan	22-Jan	Municipality	20-Jan	21-Jan	22-Jan	Municipality	20-Jan	21-Jan	22-Jan
Aadous	L	L	ML	Aamchki	VL	VL	L	Aarsal	L	VL	L
Ain Baalbek	L	VL	L	Ain Bourday	VL	VL	ML	Ain El-Benye	VL	VL	L
Ain El-Jaouz Baalbek	L	VL	ML	Ain El-Siya Chadoura	L	VL	ML	Al Khodr Baalbek	VL	VL	L
Al Nabi Chit	VL	VL	L	Aynata Baalbek	VL	VL	L	Baalbek	VL	VL	ML
Bachwat	VL	VL	L	Barqa	VL	VL	VL	Bednayel Baalbak	VL	VL	L
Beit Chama	VL	VL	L	Bijjaje	L	VL	L	Bouday	VL	VL	L
Brital	VL	VL	L	Btadi	VL	VL	L	Chaat	L	VL	L
Chaibe	L	VL	L	Chlifa	VL	VL	ML	Chmestar	VL	VL	L
Dar El-Oussa	VL	VL	L	Deir El-Ahmar	VL	VL	L	Deir Mar Maroun Baal	L	VL	ML
Douris	L	L	ML	Fakiha	L	VL	L	Hadath Baalbek	L	L	L
Ham	VL	VL	L	Haour Taala	VL	VL	L	Hizzine	L	L	ML
Hlebta	VL	VL	L	Hosh Barada	L	L	ML	Hosh El Dahab	L	L	ML
Hosh El Snid	VL	L	L	Hosh El-Nabi	L	L	L	Hosh El-Rafiq	VL	VL	L
Hosh Tal Safiya	L	L	ML	Hrebta	L	VL	L	laat	L	VL	ML

Jebaa	VL	VL	L	Jenta	VL	VL	L	Kfar Dabach	VL	VL	L
Kfar Dane	L	L	L	Khraibeh El-Hermel	L	VL	L	Khreibet Baalbek	VL	VL	L
Kneisset Baalbek	L	VL	ML	Labueh	L	VL	L	Maarboun	VL	VL	L
Majdaloun	L	L	ML	Maqneh	L	VL	ML	Mazraat Beit Mcheik	VL	VL	L
Misraya	VL	VL	L	Moqraq	L	VL	L	Nabha El-Damdoum	L	VL	L
Nabi Chbay	VL	VL	ML	Nabi Osman	L	VL	L	Nahleh baalbek	L	VL	L
Ouadi El-Oss	VL	VL	L	Qaa Baayoun	L	VL	ML	Qaa Jouar Maqiye	VL	VL	ML
Qaa Ouadi El-Khanzir	L	VL	ML	Qah Baalbek	L	VL	ML	Qarha Baalbek	L	VL	L
Qsarnaba	VL	VL	L	Ram Baalbek	L	VL	L	Ras Baalbek El Sahl	L	VL	ML
Ras Baalbek El-Charq	L	VL	ML	Riha	L	VL	L	Saaide	L	L	ML
Sbouba	L	VL	L	Seriine El-Tahta	VL	VL	L	Slouqi	VL	VL	L
Taiba Baalbek	L	L	ML	Talia	L	L	L	Taraiya	L	VL	L
Temnin El Fawqa	VL	VL	L	Temnin El-Tahta	VL	VL	L	Tfail	L	L	ML
Yahfoufa	VL	VL	L	Yammouneh	VL	VL	L	Younine	L	VL	L
Zboud	L	VL	L								

Hermel

Municipality	20-Jan	21-Jan	22-Jan	Municipality	20-Jan	21-Jan	22-Jan	Municipality	20-Jan	21-Jan	22-Jan
Charbine El-Hermel	VL	VL	L	Hermel Jbab	VL	VL	L	Hermel	L	VL	ML
Maaysra El-Hermel	L	VL	L	Michaa Mrajhine	VL	VL	L	Ouadi Faara	VL	VL	L
Ras Baalbek - Ouadi	L	VL	ML	Ras Baalbek El Gharb	L	VL	L	Zighrine	L	VL	L

Akkar

Akkar

Municipality	20-Jan	21-Jan	22-Jan	Municipality	20-Jan	21-Jan	22-Jan	Municipality	20-Jan	21-Jan	22-Jan
Aain Tinta	VL	VL	M	Aaiyat	VL	VL	L	Aakkar El-Aatiqa	VL	VL	L
Aamar Akkar	L	L	M	Aamar El Baykat	VL	VL	M	Aamayer	VL	VL	L
Aamriyet Akkar	VL	VL	M	Aandqet	VL	VL	L	Aarmeh	VL	VL	ML
Aarqa	L	L	M	Aawaynat	VL	VL	ML	Aayoun Akkar	VL	VL	L
Abboudiye	VL	VL	M	Ain El-Zeit	VL	VL	M	Ain Yaaqoub	VL	VL	L
Akroum	VL	VL	L	Aridet Cheikh Zennad	VL	ML	M	Baldeh w Mazraat Bal	VL	VL	M
Barcha	VL	VL	M	Bardeh	VL	VL	M	Bebnine	L	L	M
Beino	VL	VL	ML	Beit Ayoub	L	VL	ML	Beit El-Haouch	L	L	M
Beit Mellat	L	VL	L	Beit Younes	VL	VL	L	Berbara Akkar	VL	VL	M
Berqayel	L	L	M	Bezbina	VL	VL	L	Bireh Akkar	VL	VL	M
Borj	L	VL	L	Bqerezla	L	VL	ML	Bzal	L	L	L
Chane	VL	VL	L	Chaqdouf	VL	VL	L	Charbila	VL	VL	M
Cheikh Mohammad	VL	VL	M	Cheikh Taba Es-Sahl	VL	L	M	Cheikh Taba	L	VL	ML
Cheikh Zennad	VL	ML	M	Cheikhlar	VL	VL	M	Chir Hmairine	VL	VL	M
Daghle	VL	VL	M	Dahr Laissine	L	VL	M	Darine	VL	VL	M
Dawra	VL	VL	L	Dawsa w Baghdadi	VL	VL	M	Dayret Nahr El-Kabir	L	VL	L
Deir Dalloum	L	L	M	Deir Jennine	VL	VL	M	Denbou	L	VL	L
Dibbabiye	VL	VL	M	Douair Aadwiyeh	VL	VL	M	Fassikine	VL	VL	M
Fnaydek	VL	VL	L	Fraydes Akkar	VL	VL	ML	Ghazayle	VL	VL	M
Habchit	VL	VL	L	Hakour	L	L	M	Halba	VL	VL	M

Haouchab	VL	VL	M	Hayssat	VL	L	M	Haytla	VL	VL	M
Hayzouq	VL	VL	M	Hedd	VL	VL	M	Hmaira Aakkar	L	L	M
Hmaiss Aakkar	VL	VL	M	Hnaider	VL	VL	L	Hokr Ed-Dahri	VL	L	M
Hokr Etti	VL	VL	M	Hokr Jouret Srar	VL	VL	M	Houaich	L	VL	L
Hrar	L	VL	L	Idbil	L	VL	ML	Ilal	L	VL	ML
Janine	VL	VL	M	Jdeidet El-Joumeh	L	L	M	Jdeidet El-Kaiteh	L	L	M
Jebrayel	L	VL	ML	Kafr	VL	VL	ML	Kafr	VL	VL	M
Karm Asfour	L	VL	ML	Kfar Melki Aakkar	VL	L	M	Kfar Noun	VL	VL	ML
Kfarharra	VL	VL	M	Khalsa	VL	VL	M	Kharnoubet Aakkar	VL	VL	M
Khirbet Daoud Aakkar	VL	VL	M	Khirbet El Remmane	VL	VL	ML	Khirbet Shar	VL	VL	M
Khoreybet El-Jindi	VL	VL	M	Khreibet Aakkar	L	VL	ML	Kneisset Aakkar	VL	ML	M
Kneisset Hnaider	VL	VL	L	Knisse	VL	VL	M	Kroum El-Aarab	VL	VL	M
Kwachra	VL	VL	M	Kweykhat	VL	VL	M	Machta Hammoud	L	VL	ML
Majdala	L	L	M	Majdel Akkar	VL	VL	M	Mar Touma	L	L	M
Marlaya Melhem	L	L	M	Mashha	VL	VL	M	Massoudiye	VL	L	M
Mazraat Beit Ghattas	L	L	M	Mazraat En-Nahriye	VL	VL	ML	Mechmech	VL	VL	L
Memneh	VL	VL	L	Mhammara	L	L	M	Mighraq Aakkar	VL	ML	M
Minyara	L	L	M	Moqayteh	VL	ML	M	Mounjez	VL	VL	ML
Msalla	VL	VL	M	Mzeihmeh	VL	VL	M	Nfaisch	VL	VL	M
Noura Et-Tahta	VL	VL	ML	Ouadi El-Haour	VL	VL	M	Ouadi El-Jamous	L	L	M
Ouyoun El-Ghizlane	L	L	M	Qaabarine	VL	L	M	Qabaait	L	VL	L
Qachlaq	VL	VL	M	Qantara Aakkar	L	VL	ML	Qarha Aakkar	L	VL	L
Qarqaf	L	L	M	Qboula	L	VL	L	Qleiaat Aakkar	VL	ML	M
Qloud El-Baqie	L	L	M	Qobaiyat Aakkar	VL	VL	L	Qobbat Chamrat	L	L	M
Qorayat	VL	VL	L	Qornet Aakkar	VL	VL	L	Qsair Aakkar	VL	VL	M
Rahbe	L	VL	ML	Rihaniyet Aakkar	VL	VL	M	Rmah	VL	VL	ML
Rmoul	VL	L	M	Saadine	VL	VL	M	Sadaqa	L	VL	ML
Saidnaya	VL	VL	M	Sammouniye	VL	L	M	Sayssouq	L	L	M
Semmaqiye	VL	ML	M	Semmaqli	L	L	M	Sfinet El-Dreib	VL	VL	M
Sfinet El-Qaitaa	L	VL	ML	Sindyanet Zeidane	VL	VL	ML	Souaisset Aakkar	VL	VL	M
Srar	VL	VL	M	Tal Abbas El Gharby	VL	L	M	Tal Abbas El-Charqy	VL	VL	M
Tal Biret	VL	L	M	Tal Hmayra	VL	VL	M	Tal Maayan Tal Kiri	VL	L	M
Tal Sibel	VL	L	M	Tallet Chattaha	VL	VL	L	Tikrit	L	VL	L
Tleil	VL	VL	M	Tshea	VL	VL	L	Zawarib	L	VL	ML
Zouq El Hosniyeh	L	L	M	Zouq El-Haddara	L	L	M	Zouq El-Hbalsa	L	L	M
Zouq El-Moqachrine	L	L	M								

Sud

Sour

Municipality	20-Jan	21-Jan	22-Jan	Municipality	20-Jan	21-Jan	22-Jan	Municipality	20-Jan	21-Jan	22-Jan
Aaiyeh	VL	VL	L	Aalma El-Chaab	VL	VL	L	Aaytit	VL	VL	L
Abbassiyeh Sour	VL	L	L	Abou Chech	VL	VL	L	Ain Abou Abdallah	VL	L	L
Ain Baal	VL	VL	L	Arzoun	VL	L	L	Aziyeh	VL	VL	L
Baflaya	VL	VL	L	Barich	VL	VL	L	Batouliyeh	VL	VL	L
Bayad	VL	VL	L	Bazouriyeh	VL	L	L	Bediass	VL	VL	L

Bestiyat	VL	VL	L	Borj El Chemali	VL	L	L	Borj En-Naqoura	VL	VL	L
Borj Rahhal	VL	VL	L	Boustane	VL	VL	L	Btaychiyeh	VL	VL	L
Chaaitiye	VL	VL	L	Chameh	VL	VL	VL	Chehabiye	VL	L	L
Chehour	VL	VL	L	Chihine	VL	VL	L	Debaal Sour	VL	VL	L
Deir Amess	VL	VL	L	Deir Kifa	VL	L	L	Deir Qanoun El-Ain	VL	VL	L
Deir Qanoun El-Naher	VL	VL	L	Derdghaiya	VL	L	L	Dhayra	VL	VL	L
Halloussiyeh	VL	VL	L	Hamoul	VL	VL	L	Hanaouey	VL	VL	L
Henniye	VL	VL	L	Hmairi Sour	VL	VL	L	Iskandarouna Sour	VL	VL	L
Jbal El Botom	VL	VL	L	Jebbin	VL	VL	L	Jennata	VL	VL	L
Jijim	VL	VL	VL	Jouaiya	VL	VL	L	Kneisset Sour	VL	VL	L
Maarake	VL	VL	L	Maaroub	VL	VL	L	Majadel	VL	VL	L
Majdalzoun	VL	VL	L	Mansouri Sour	VL	VL	L	Marnba	VL	VL	L
Marouahine	VL	VL	L	Mazraat El-Zalloutiy	VL	VL	L	Mazraat Mechref	VL	VL	L
Mazraat Tayr Semhat	VL	VL	L	Mheilib	VL	L	L	Neffakhiyeh	VL	L	L
Niha Sour	VL	L	L	Ouadi Jilo	VL	VL	L	Qana	VL	VL	L
Qolaileh Sour	VL	VL	L	Rechknany	VL	VL	L	Rmadiyeh	VL	VL	L
Selha Sour	VL	L	L	Siddiqine	VL	VL	L	Sour	VL	L	ML
Srifa	VL	L	L	Tayr Debbe	VL	VL	L	Tayr Felsay	VL	VL	L
Tayr Harfa	VL	VL	L	Touayri	VL	VL	L	Toura	VL	VL	L
Yanouh Sour	VL	VL	L	Yarine	VL	VL	L	Zebqine	VL	VL	L

Saida

Municipality	20-Jan	21-Jan	22-Jan	Municipality	20-Jan	21-Jan	22-Jan	Municipality	20-Jan	21-Jan	22-Jan
Aanqoun	VL	VL	ML	Aaqtanit	VL	VL	ML	Aarab Ej-Jall	VL	VL	ML
Aarab Tabbaya	VL	VL	ML	Abra Saida	VL	VL	M	Adloun	VL	L	M
Adousiyeh	VL	L	M	Ain-El-Deleb	VL	VL	ML	Arzai	VL	VL	L
Babliyeh	VL	L	M	Barty	VL	VL	L	Bissariyeh	VL	L	M
Bnaafoul	VL	VL	ML	Bqosta	VL	VL	M	Bramiy	VL	VL	M
Daoudiyeh	VL	L	M	Dareb El-Sim	VL	VL	ML	Erkay	VL	VL	ML
Ghassanieh	VL	L	M	Ghazieh	VL	L	M	Hajjeh	VL	VL	ML
Haret Saida	VL	VL	M	Hartiyeh	VL	L	M	Hlaliye Saida	VL	VL	M
Insariyat	VL	L	M	Jazira Saida	VL	L	L	Kafar Bit	VL	VL	ML
Kaoutariyet El-Siyad	VL	L	L	Kfar Chellal	VL	VL	L	Kfar Hatta Saida	VL	VL	ML
Kfar Milke Saida	VL	VL	L	Khartoum	VL	L	ML	Khaziz	VL	VL	ML
Khirbet Ed-Douair Sa	VL	L	M	Khirbet El-Bassal	VL	L	M	Khrayeb Saida	VL	L	ML
Loubieh	VL	L	M	Maghdouche	VL	VL	ML	Majdelyoun	VL	VL	M
Matariyet El-Choumar	VL	VL	L	Matayriyeh	VL	VL	ML	Mazraat 'Mseileh	VL	L	M
Mazraat 'Snaiber	VL	L	M	Mazraat Aarab Soukka	VL	VL	ML	Mazraat Deir Taqla	VL	L	M
Mazraat El Yahoudiye	VL	L	ML	Mazraat El-Housseini	VL	L	M	Mazraat El-Mhaydaleh	VL	L	M
Mazraat El-Ouasta	VL	L	ML	Mazraat Jamjim	VL	L	ML	Mazraat Kaoutariyet	VL	L	M
Mazraat Kfar Badda	VL	L	M	Mazraat Oussamiyat	VL	L	M	Mazraat Sari	VL	L	M
Mazraat Sinai	VL	L	M	Meemariyeh	VL	VL	M	Merouaniyeh	VL	L	ML
Miyeh ou Miyeh	VL	VL	ML	Najjariyeh	VL	L	M	Qaaqiyat El-Snaouba	VL	L	M
Qnarit	VL	VL	ML	Qraiye Saida	VL	VL	ML	Saida Ed-Dekermane	VL	VL	M
Saida El-Oustani	VL	VL	M	Saida El-Qadimeh	VL	VL	M	Saida Kefraya	VL	VL	ML
Saksakiyeh	VL	L	M	Salhieh Saida	VL	VL	M	Sarafand	VL	L	M

Sfenta	VL	VL	L	Tafahta	VL	L	M	Tanbourit	VL	VL	ML
Tebna	VL	L	M	Zaghdraiya	VL	VL	ML	Zeita	VL	VL	ML
Zrariyeh	VL	L	ML								

Jezzine

Municipality	20-Jan	21-Jan	22-Jan	Municipality	20-Jan	21-Jan	22-Jan	Municipality	20-Jan	21-Jan	22-Jan
Ain El-Mir (El Estab)	VL	VL	ML	Anane	VL	VL	L	Aramta	VL	VL	L
Ariya	VL	VL	L	Aychiyeh	VL	VL	L	Azour	VL	VL	L
Baba	VL	VL	L	Bayssour Jezzine	VL	VL	ML	Benoueteh Jezzine	VL	VL	L
Bhannine	VL	VL	L	Bisri	VL	VL	L	Bkassine	VL	VL	L
Bouslaya	VL	VL	L	Btedine El-Leqech	VL	VL	L	Chbail	VL	VL	L
Choualiq Jezzine	VL	VL	M	Dahr Ed-Deir	VL	VL	L	Deir El Qattine	VL	VL	L
Demachqiyeh	VL	VL	ML	Ghabbatiyeh	VL	VL	L	Harf Jezzine	VL	VL	L
Hassaniyeh	VL	VL	ML	Haytouleh	VL	VL	L	Haytura	VL	VL	L
Hidab	VL	VL	L	Homsiyeh	VL	VL	L	Jabal Toura	VL	VL	L
Jarmaq	VL	VL	L	Jensnaya	VL	VL	ML	Jernaya	VL	VL	L
Jezzine	VL	VL	L	Karkha	VL	VL	ML	Kfar Falous	VL	VL	L
Kfar Houna	VL	VL	L	Kfar Jarrah	VL	VL	M	Lebaa	VL	VL	M
Louayzet Jezzine	VL	VL	L	Machmouche	VL	VL	VL	Mahmoudiyeh Jezzine	VL	VL	L
Maknounye Jezzine	VL	VL	L	Maraat Ouazaiyeh	VL	VL	L	Mazraat Daraya	VL	VL	L
Mazraat El-Aarqoub	VL	VL	L	Mazraat El-Mathane	VL	VL	VL	Mazraat El-Rahbane	VL	VL	L
Mazraat Khallet Khaz	VL	VL	L	Mazraat Louzid (Loua	VL	VL	L	Mazraat Qrouh	VL	VL	L
Mazraat Tamra	VL	VL	ML	Mazraat Zighrine Jez	VL	VL	L	Mazraat	VL	VL	L
Mharbiyeh	VL	VL	ML	Midane Jezzine	VL	VL	L	Mjeydel Jezzine	VL	VL	ML
Mlikh	VL	VL	L	Mrah El-Hbasse	VL	VL	ML	Ouadi Baanqoudaine	VL	VL	ML
Ouadi El-Laymoun	VL	VL	L	Ouardiyeh	VL	VL	VL	Qabaa Jezzine	VL	VL	L
Qatrani	VL	VL	L	Qaytouleh	VL	VL	L	Qtaleh Jezzine	VL	VL	L
Rihane Jezzine	VL	VL	L	Rimat	VL	VL	L	Roum	VL	VL	L
Roummanet	VL	VL	L	Sabbah	VL	VL	L	Saydoun	VL	VL	L
Sfaray	VL	VL	L	Snaya	VL	VL	L	Sojoud	VL	VL	L
Srayri	VL	VL	L	Taaid	VL	VL	L	Wadi Jezzine	VL	VL	L
Zhalta	VL	VL	L								

Bekaa

West Bekaa

Municipality	20-Jan	21-Jan	22-Jan	Municipality	20-Jan	21-Jan	22-Jan	Municipality	20-Jan	21-Jan	22-Jan
Aammiq BG	VL	L	L	Ain El Tineh BG	VL	VL	L	Ain Zebdeh	VL	L	L
Ana	VL	L	L	Aytanit	VL	VL	L	Baaloul BG	VL	L	L
Bab Mareh	VL	VL	L	Chouberqiye Aammiq	VL	L	L	Dakoue	VL	VL	L
Deir Ain El-Jaouze	VL	VL	L	Deir Tahniche	VL	L	L	Ghaza	VL	L	L
Harime El-Soughra	VL	VL	L	Hoch Harimeh	VL	L	L	Jazira BG	VL	L	L
Jib Jennine	VL	L	L	Kamed-El-Laouz	VL	L	L	Kefraya BG	VL	VL	L
Khiara El Atika	VL	L	L	Khiara	VL	L	L	Khirbet Qanafar	VL	VL	L
Lala	VL	L	L	Lebbaya BG	VL	VL	L	Loussa	VL	L	L
Machghara	VL	VL	L	Manara (Hammara) BG	VL	VL	L	Mansoura BG	VL	L	L

Marej BG	VL	VL	L	Maydoun	VL	VL	L	Ouaqf BG	VL	L	L
Qaraaoun	VL	VL	L	Qelya	VL	VL	L	Raouda (Istabel)	VL	VL	L
Saghbine	VL	VL	L	Sohmor	VL	VL	L	Soltan Yacoub el Ara	VL	L	L
Souairy	VL	VL	L	Sultan Yaacoub	VL	L	L	Tal Znoub	VL	L	L
Yehmor BG	VL	VL	L	Zilaya	VL	VL	L				

Zahle

Municipality	20-Jan	21-Jan	22-Jan	Municipality	20-Jan	21-Jan	22-Jan	Municipality	20-Jan	21-Jan	22-Jan
Aanjar (Haouch Mouss)	VL	VL	L	Ablah	VL	VL	L	Ain Kfarzabad	VL	VL	L
Ali-El-Nahri	VL	VL	L	Bar Elias	VL	VL	L	Bouarej	VL	L	L
Cheberqiyet Tabet	VL	VL	L	Chtaura	VL	VL	L	Deir El Ghazal	VL	VL	L
Delhamiyet Zahle	VL	VL	L	Ferzol	VL	VL	L	Haouch El-Ghanam	VL	VL	L
Haouch Es-Siyadeh	VL	VL	L	Haouch Hala	VL	VL	L	Haouch Mandara	VL	VL	L
Haouch Qayssar	VL	VL	L	Hezerta	VL	VL	L	Hosh Moussa	VL	VL	L
Jdita	VL	VL	L	Kfarzabad	VL	VL	L	Ksara	VL	VL	L
Majdel Aanjar	VL	VL	L	Makssi	VL	VL	L	Massa	VL	VL	L
Mazraat Er-Remtaniye	VL	VL	L	Mrayjat Zahle	VL	VL	L	Mzaraa Zahle	VL	VL	L
Nabi Ayla	VL	VL	L	Nasriyet Rizk	VL	VL	L	Nasriyet Zahle	VL	L	L
Niha Zahle	VL	VL	L	Ouadi Ed-Deloum	VL	VL	L	Ouadi El-Arayech	VL	VL	L
Qaa El Rim	VL	VL	L	Qab Elias	VL	VL	L	Qousaya	VL	VL	L
Rhit	VL	VL	L	Riyak	VL	VL	L	Saadnayel	VL	VL	L
Taal El-Akhdar	VL	L	L	Taalbeya	VL	VL	L	Taanayel	VL	VL	L
Talamara	VL	VL	L	Tcheflik Edde Haouch	VL	L	L	Tcheflik Qiqano	VL	VL	L
Terbol Zahle	VL	VL	L	Touaite Zahle	VL	VL	L	Zahle Aradi	VL	VL	L
Zahle El-Berbara	VL	VL	L	Zahle El-Maallaqa	VL	VL	L	Zahle El-Midane	VL	VL	L
Zahle Er-Rassiye	VL	VL	L	Zahle Haouch El-Ouma	VL	VL	L	Zahle Haouch El-Ouma	VL	VL	L
Zahle Haouch Ez-Zara	VL	VL	L	Zahle Maallaqa Aradi	VL	VL	L	Zahle Mar Antonios	VL	VL	L
Zahle Mar Elias	VL	VL	L	Zahle Mar Gerios	VL	VL	L	Zahle Saydet En-Naja	VL	VL	L
Zebdoul	VL	VL	L								

Rachaiya

Municipality	20-Jan	21-Jan	22-Jan	Municipality	20-Jan	21-Jan	22-Jan	Municipality	20-Jan	21-Jan	22-Jan
Ain Arab Rachaiya	L	L	L	Ain Ata	VL	VL	L	Ain Harche	VL	L	L
Aqabe Rachaya	VL	L	L	Ayha	L	L	L	Ayta El Fokhar	VL	L	L
Bakifa Rachaya	VL	L	L	Bakka	L	L	L	Beit Lahya	VL	L	L
Bireh Rachaiya	L	L	L	Daher El Ahmar	VL	L	L	Deir El-Achayer	L	L	L
Heloua Rachaiya	L	L	L	Hoch El Qannabeh Rac	VL	L	L	Kaoukaba Bou Arab	VL	L	L
Kfar Danis	L	L	L	Kfar Mechki	VL	L	L	Kfar Qouq	L	L	L
Kherbet Rouha	L	L	L	Majdel Balhiss	VL	VL	L	Mdoukha	L	L	L
Mhaydseh Rachaiya	VL	L	L	Nabi Safa	VL	VL	L	Rachaiya	VL	L	L
Rafid Rachaiya	VL	L	L	Selsata (Mazraat Dei	L	L	L	Tannoura	VL	L	L
Yanta	L	L	L								

Beyrouth

Beyrouth

Municipality	20-Jan	21-Jan	22-Jan	Municipality	20-Jan	21-Jan	22-Jan	Municipality	20-Jan	21-Jan	22-Jan
--------------	--------	--------	--------	--------------	--------	--------	--------	--------------	--------	--------	--------

Achrafieh	VL	VL	ML	Ain el-Mreisse	VL	VL	ML	Bachoura	VL	VL	ML
Beirut Central Distr	VL	VL	ML	Marfai	VL	VL	ML	Mazraa	VL	VL	ML
Medaouar	VL	VL	ML	Minet el-Hosn	VL	VL	ML	Mwssaitbeh	VL	VL	ML
Ras Beirut	VL	VL	ML	Rmeil	VL	VL	ML	Saifi	VL	VL	ML
Zqaq el-Blat	VL	VL	ML								