

Lebanon Fire Risk Bulletin



CIVIL DEDEFENCE

Refer to cadast table condition.

Please note that the indicated temperature is at 2 meters height from the ground.

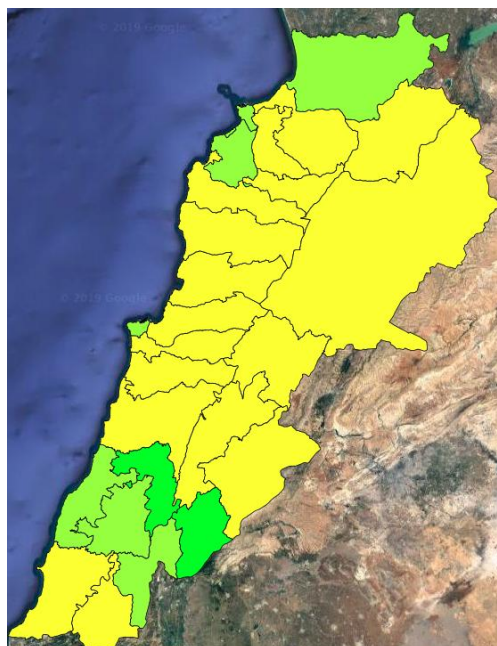
General description of potential fire risk situation

Symbol	Level of risk	Meaning and actions
VL	Very low	Very low fire risk. Controlled burning operations can be hardly executed due to high fuel moisture content. Normally wildfires self-extinguish.
L	Low	Low fire risk. Controlled burning operations can be executed with a reasonable degree of safety.
ML	Medium low	Medium-low fire risk. Controlled burning operations can be executed in safety conditions. All the fires need to be extinguished.
M	Medium	Medium fire risk. Controlled burning operations would be avoided. All the fires need to be very well extinguished.
M	Medium high	Controlled burning is not recommended. Open flame will start fires. Cured grasslands and forest litter will burn readily. Spread is moderate in forests and fast in exposed areas. Patrolling and monitoring is suggested. Fight fires with direct attack and all available resources.
H	High	Ignition can occur easily with fast spread in grass, shrubs and forests. Fires will be very hot with crowning and short to medium spotting. Direct attack on the head may not be possible requiring indirect methods on flanks. Patrolling and monitoring the territory is highly suggested.
E	Extreme	Ignition can occur also from sparks. Fires will be extremely hot with fast rate of spread. Control may not be possible during day due to long range spotting and crowning. Suppression forces should limit efforts to limiting lateral spread. Damage potential total. Patrolling and monitoring the territory is highly suggested.

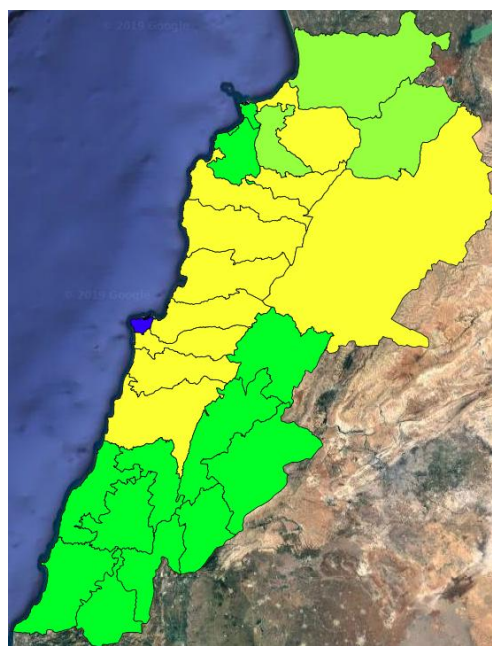
Beirut, 20 March 2019

FIRE RISK INDEX

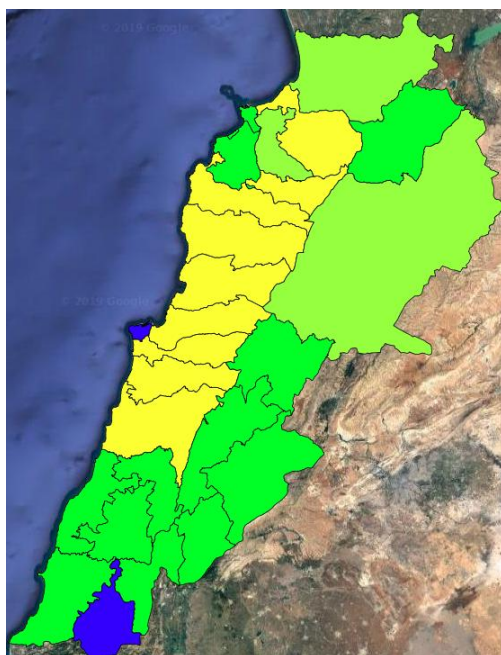
19 March 2019



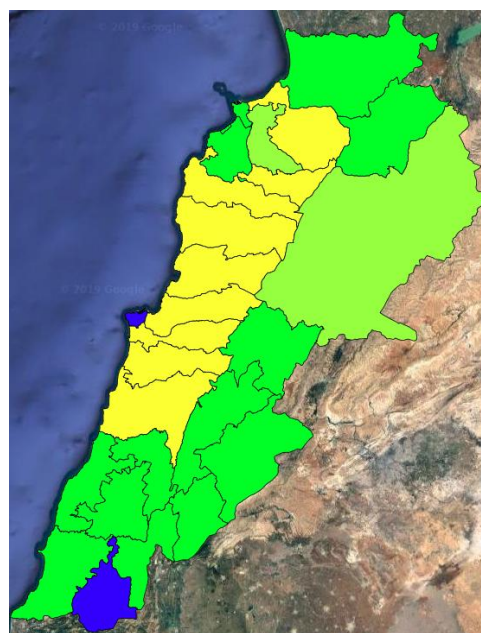
20 March 2019



21 March 2019



22 March 2019

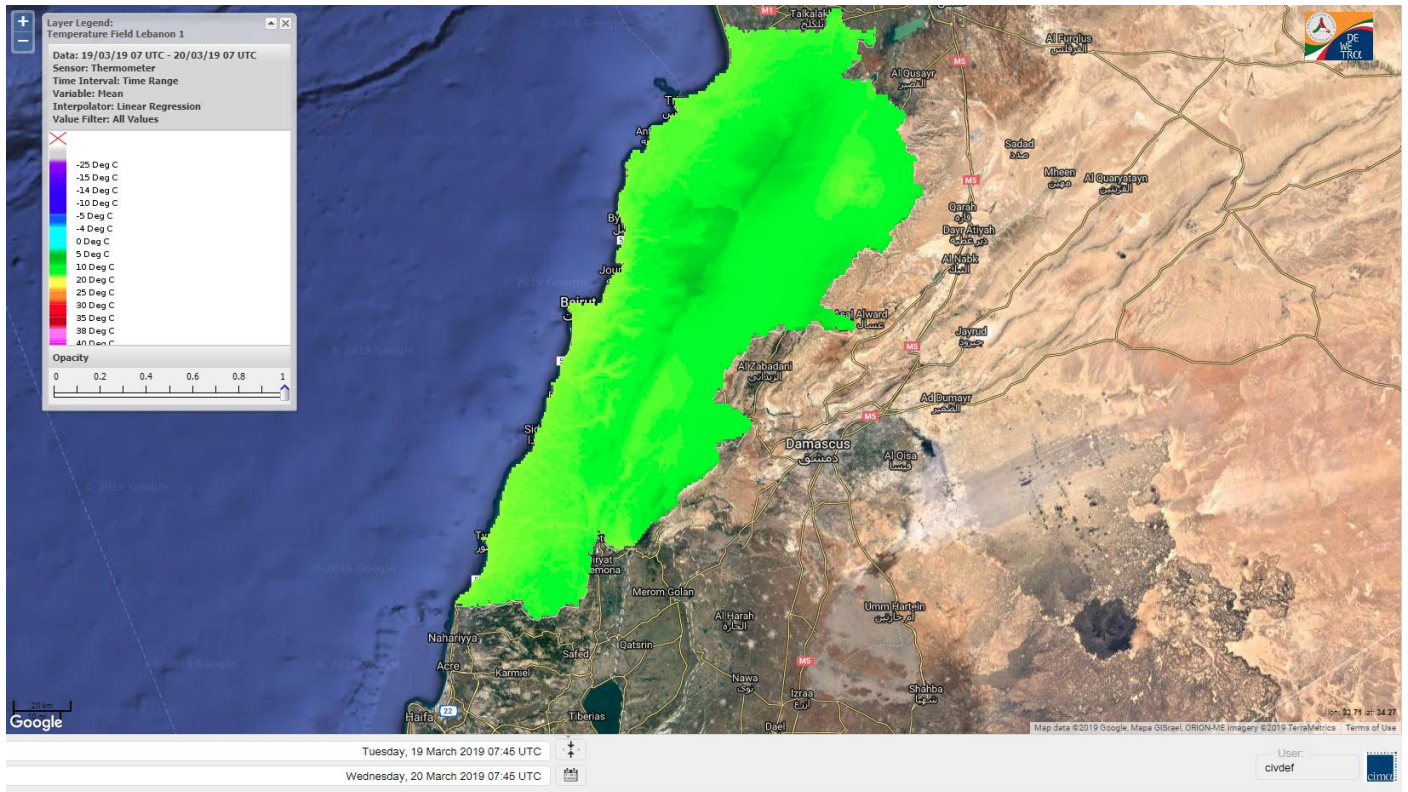


Layer Legend:
Lebanon Wildfire Risk Index 1

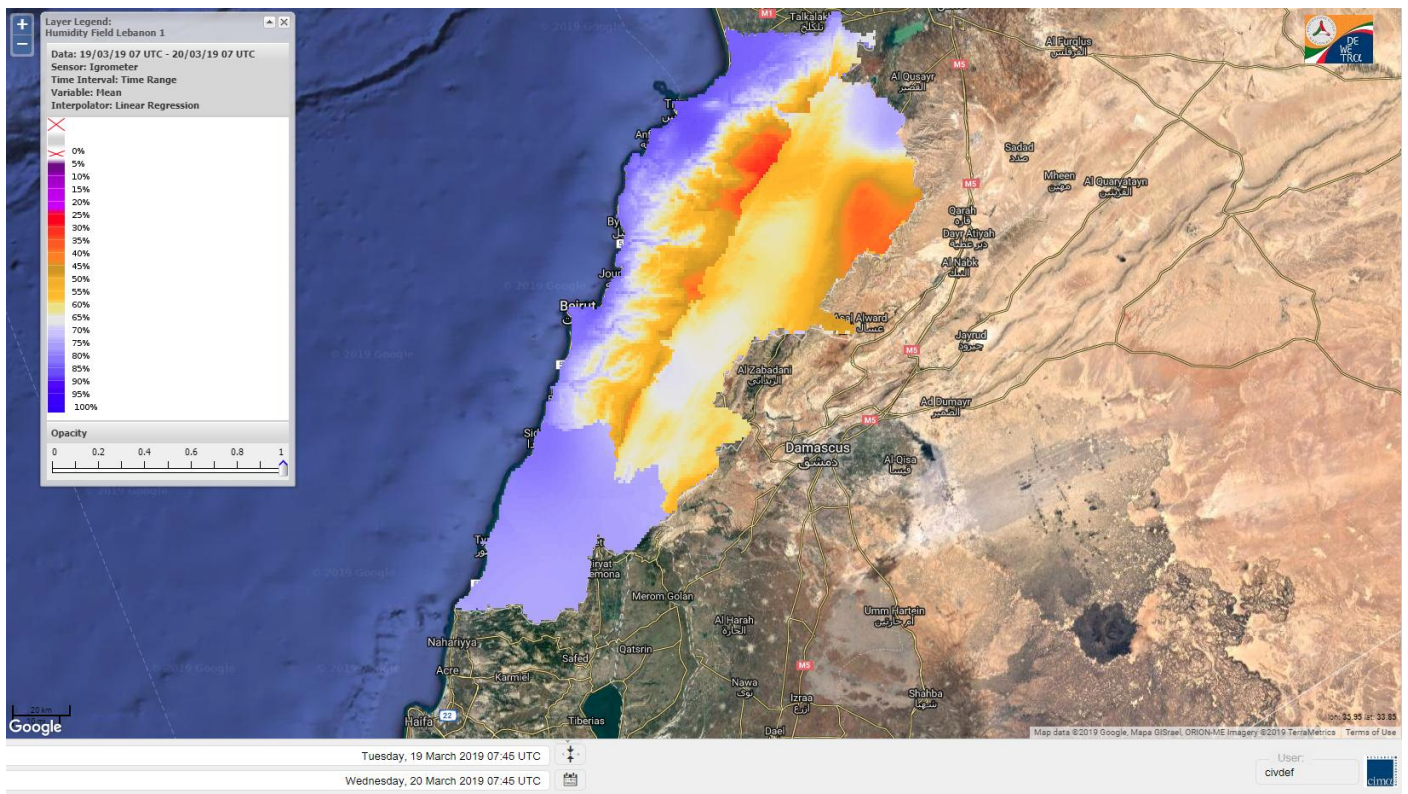
Data: Run: 20/03/2019 00:00. Forecast for 20
Model: RISICO for the Republic of Lebanon
Variable: Fire Weather Index
Spatial Resolution: Caza

- VERY LOW
- LOW
- MEDIUM-LOW
- MEDIUM
- MEDIUM-HIGH
- HIGH
- EXTREME

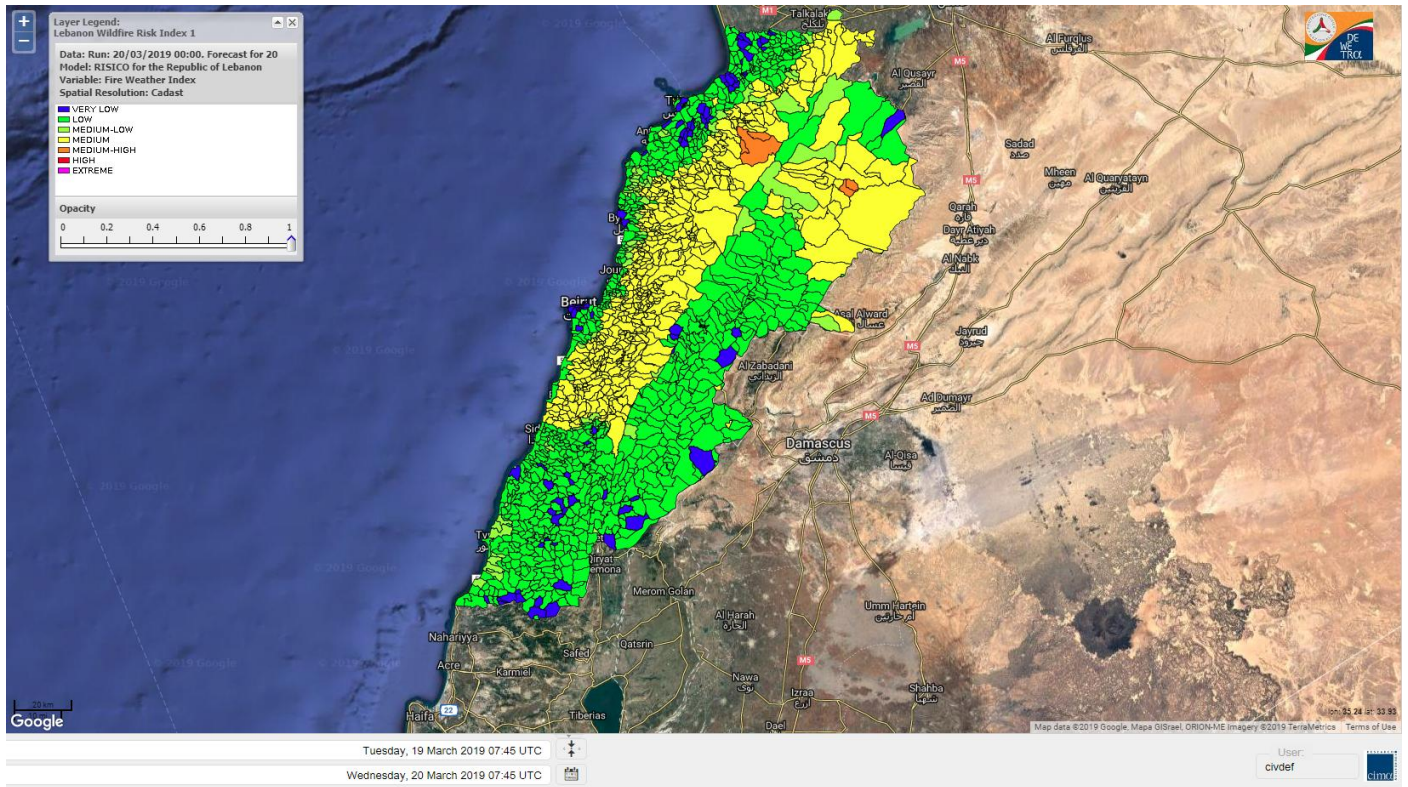
Lebanon temperature for Lebanon 20 March 2019



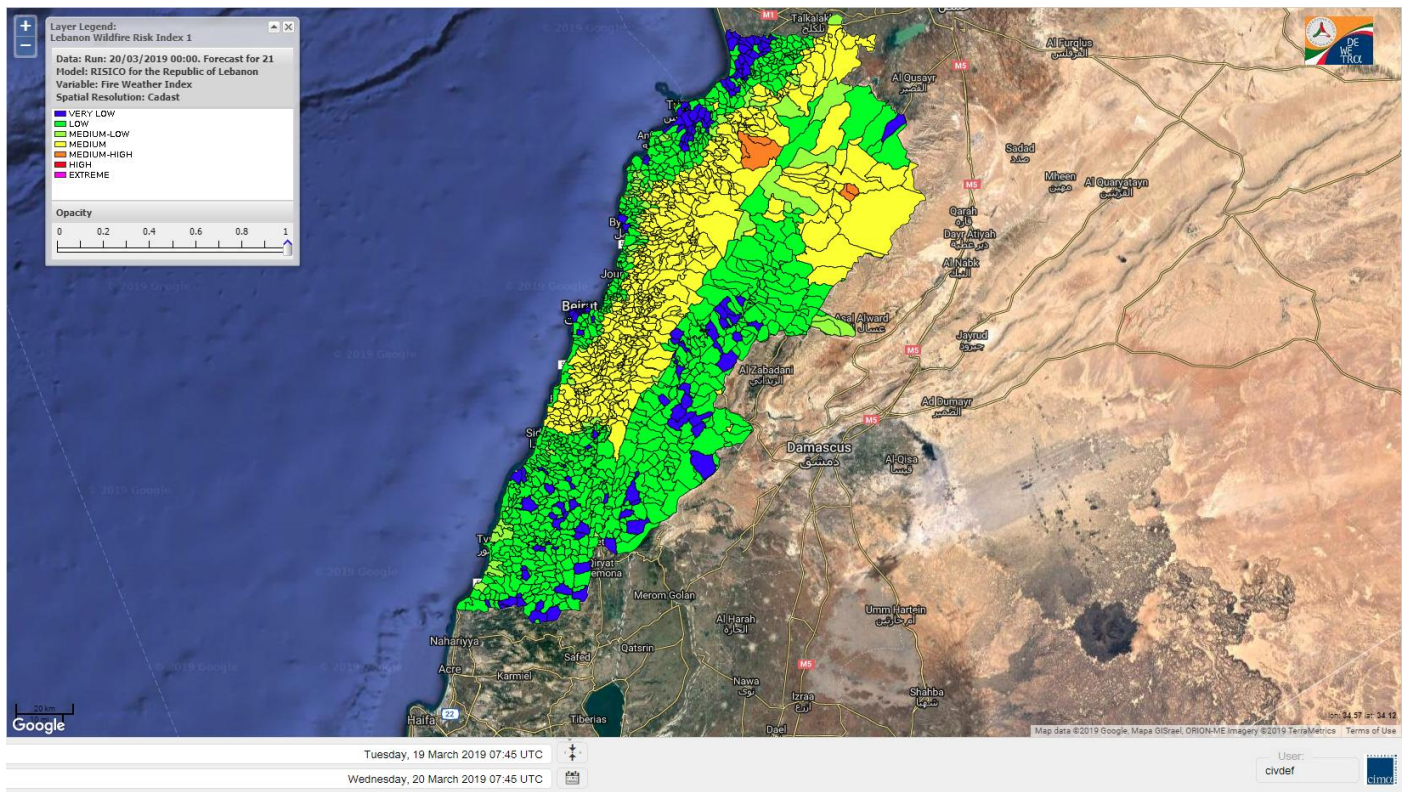
Lebanon humidity for Lebanon 20 March 2019



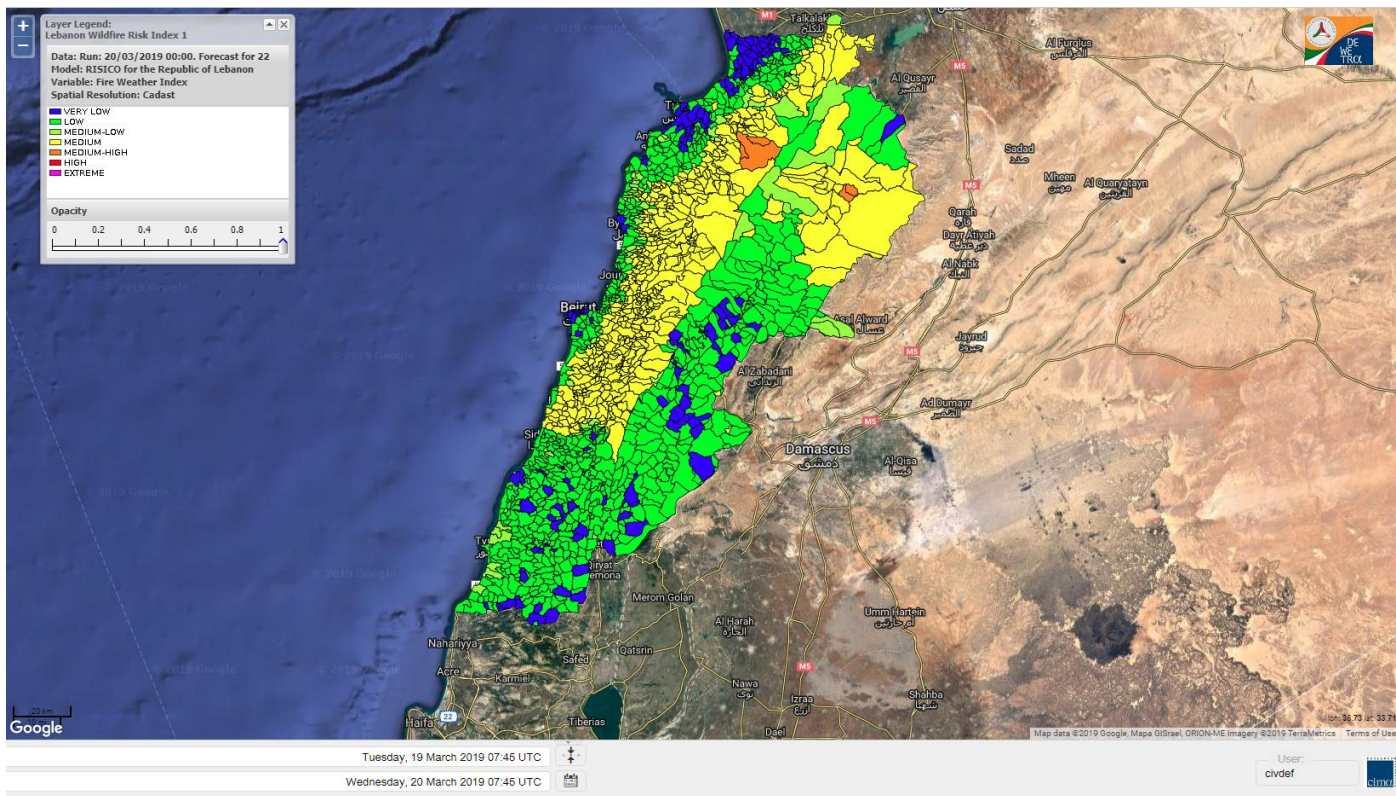
Lebanon for 20 March 2019



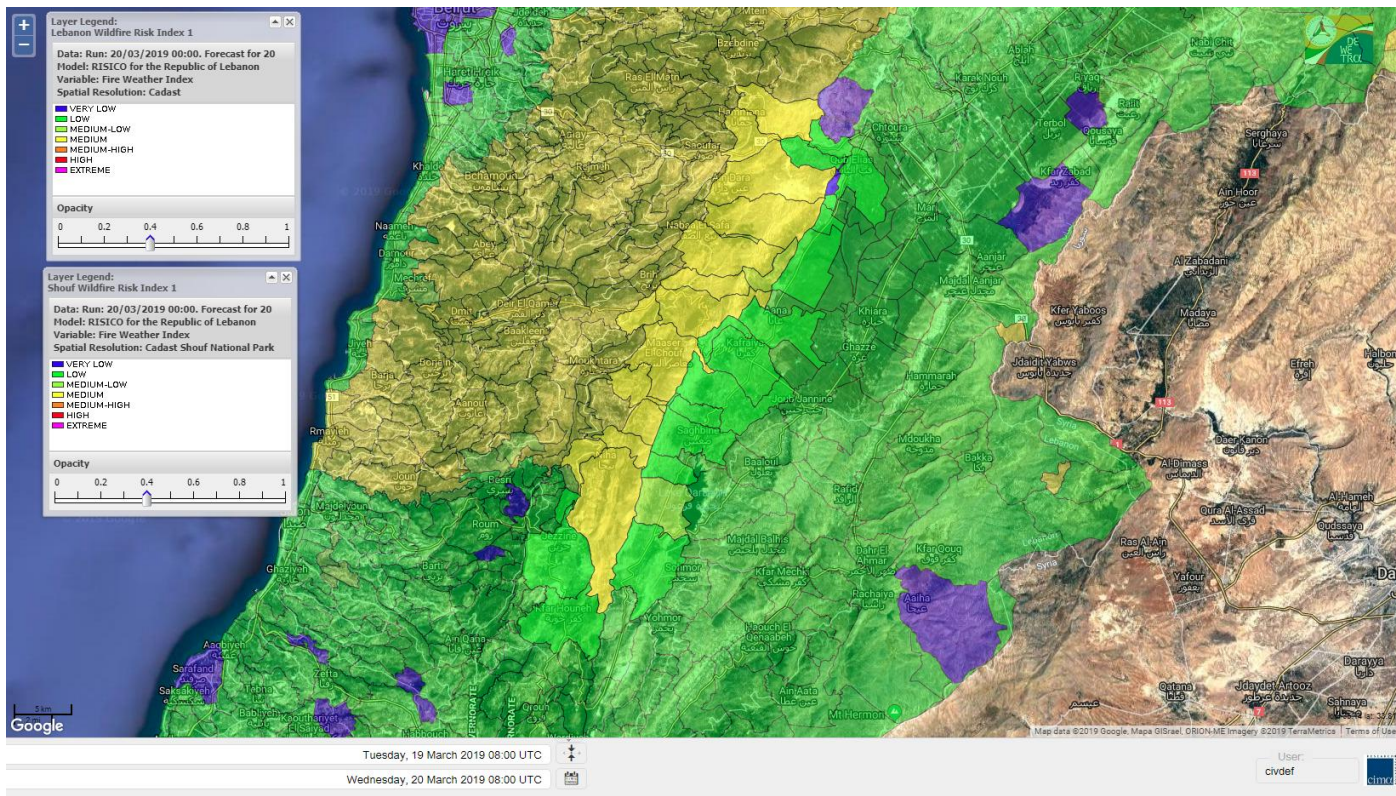
Lebanon for 21 March 2019



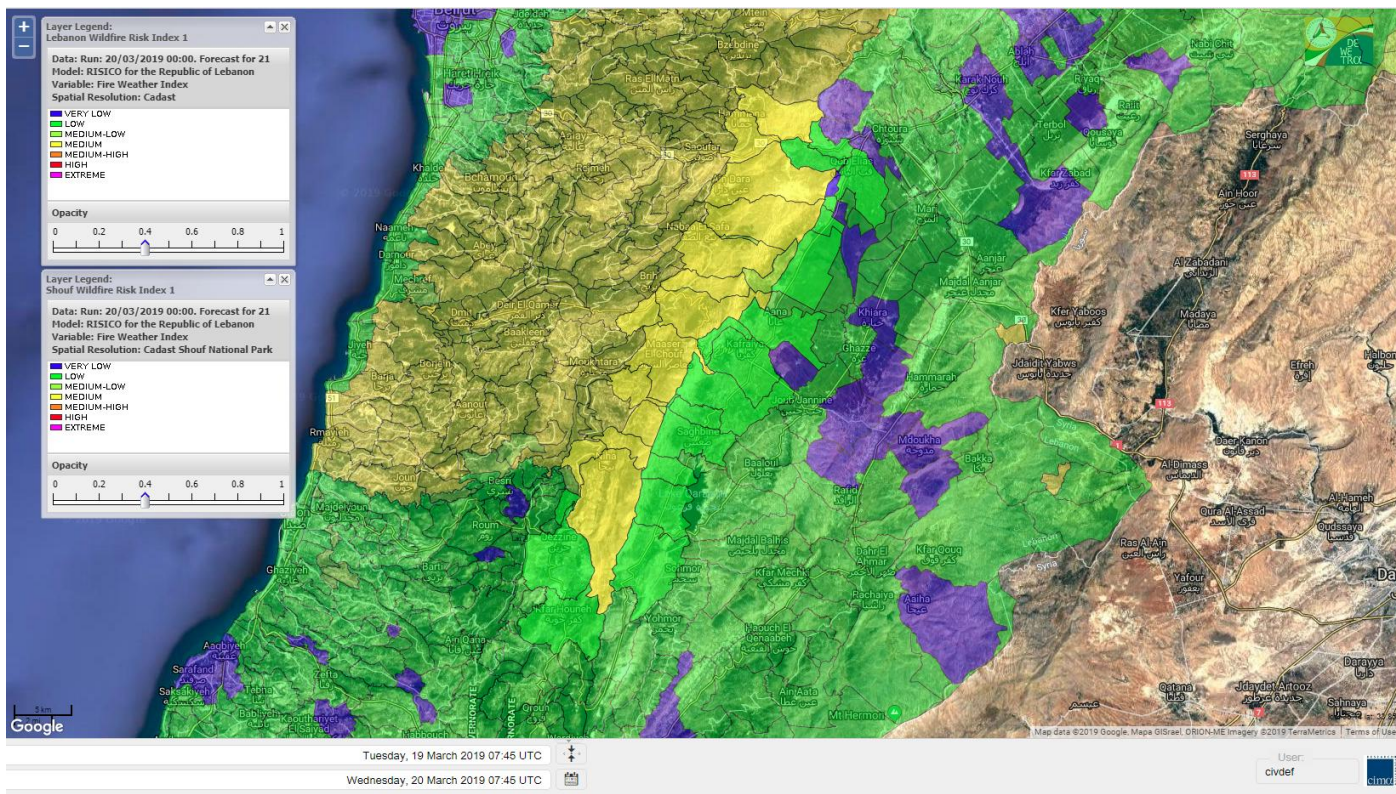
Lebanon for 22 March 2019



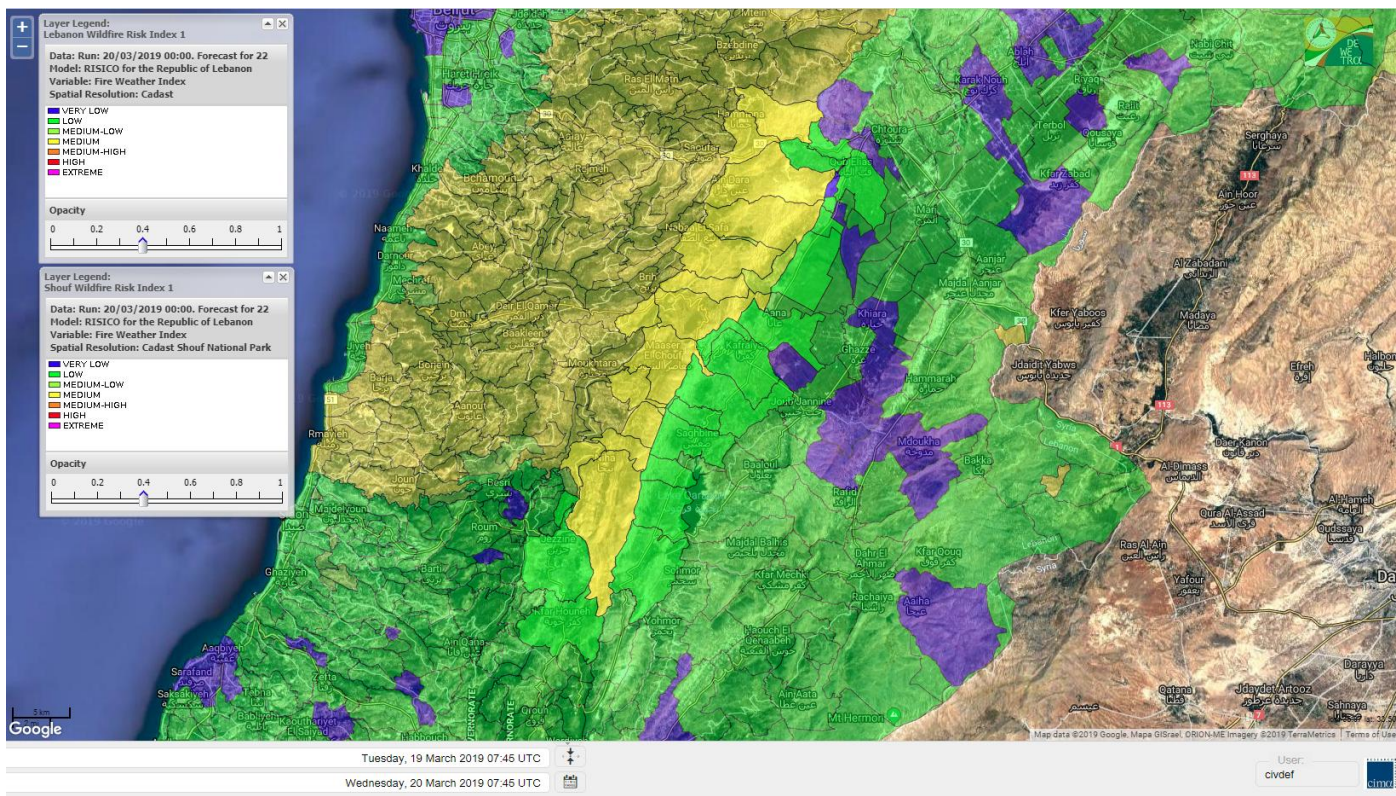
Shouf Biosphere Reserve Forecast for 20 March 2019



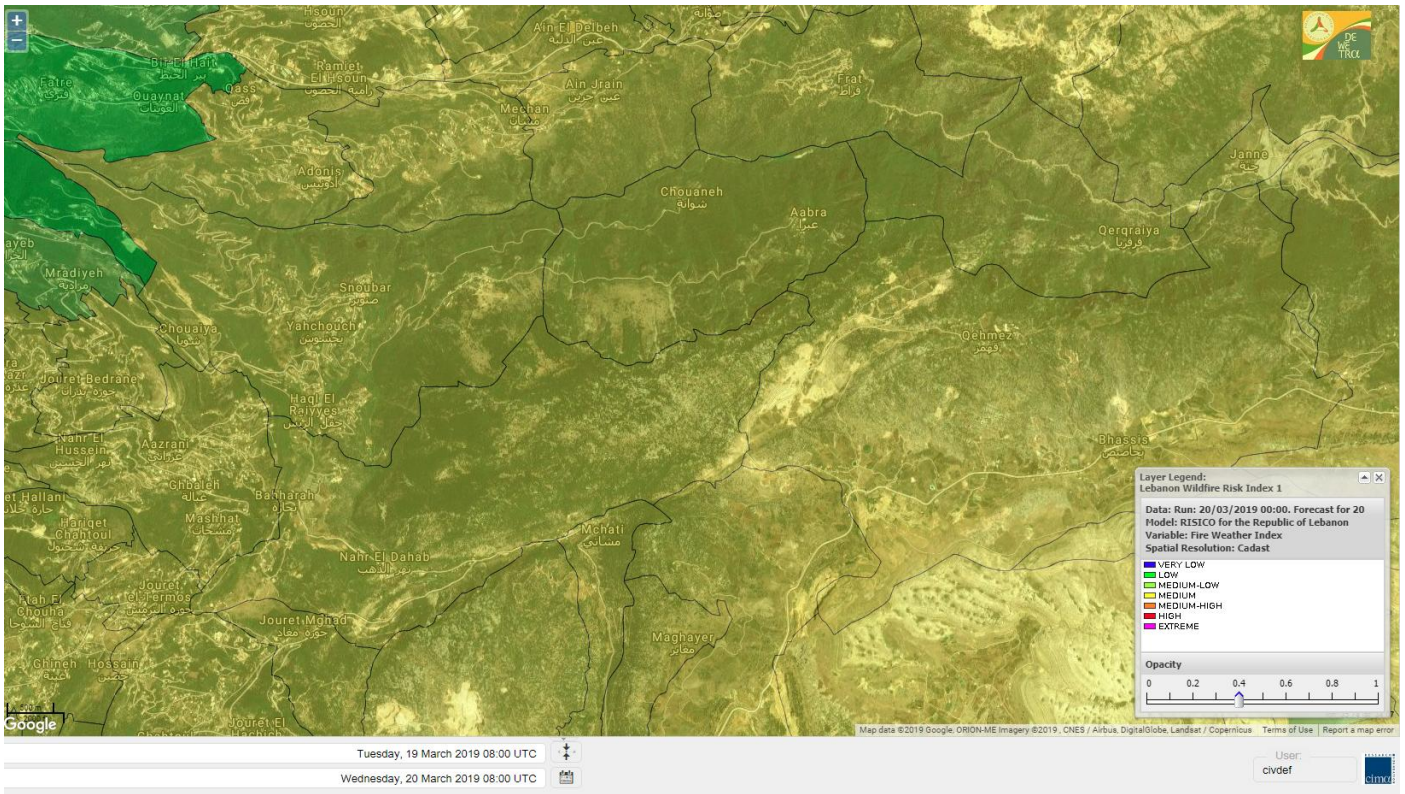
Shouf Biosphere Reserve Forecast for 21 March 2019



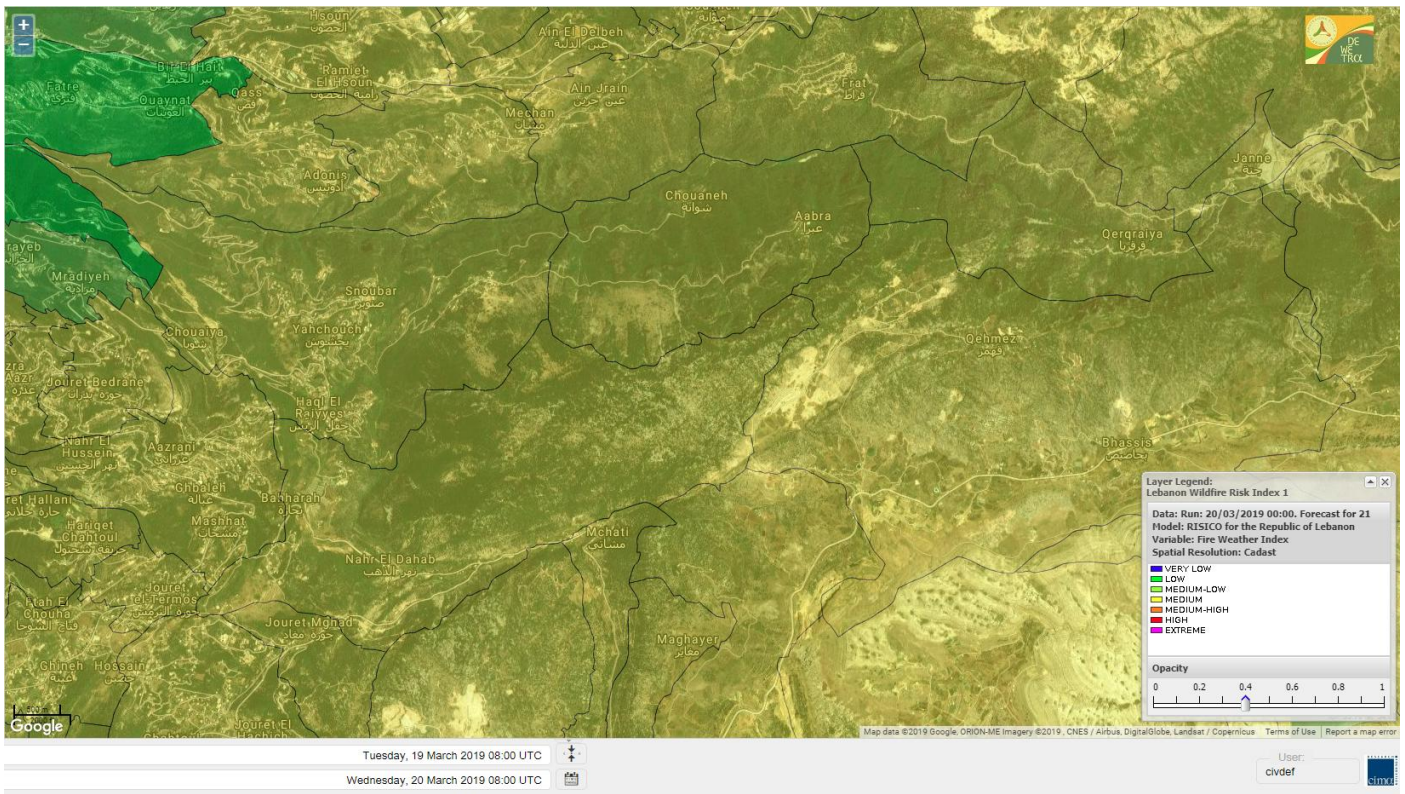
Shouf Biosphere Reserve Forecast for 22 March 2019



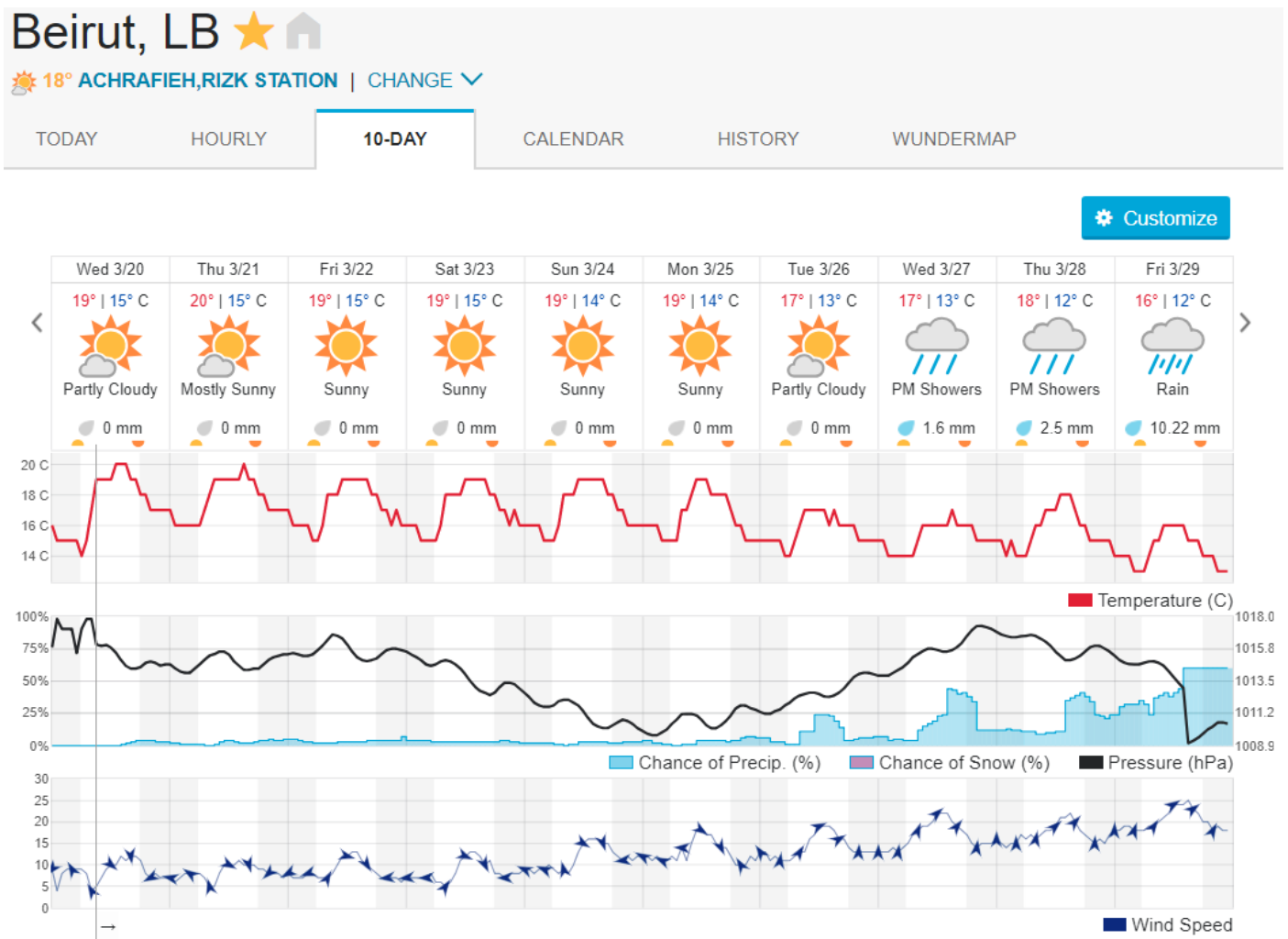
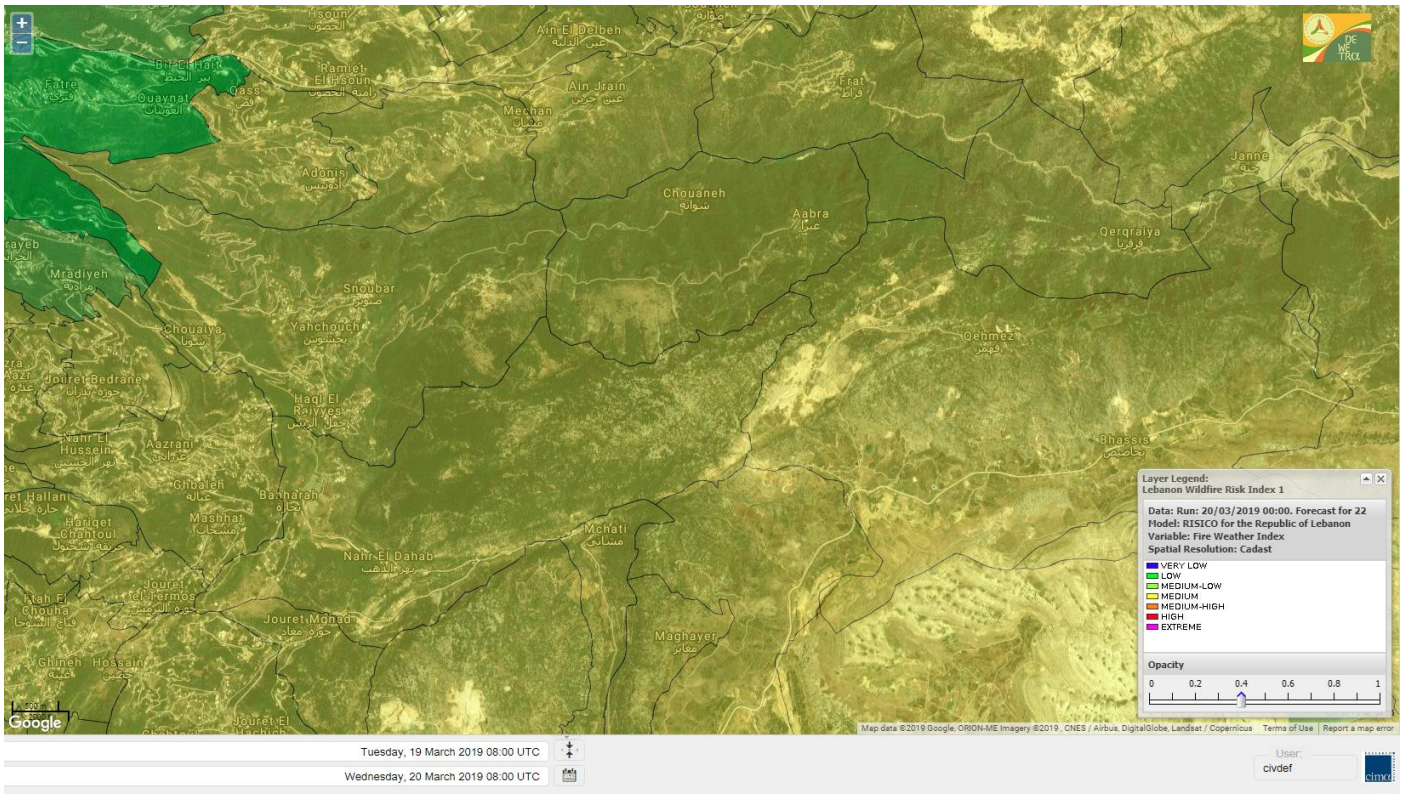
Jabal Moussa Reserve Forecast for 20 March 2019



Jabal Moussa Reserve Forecast for 21 March 2019



Jabal Moussa Reserve Forecast for 22 March 2019



Nord

Koura

Municipality	20-Mar	21-Mar	22-Mar	Municipality	20-Mar	21-Mar	22-Mar	Municipality	20-Mar	21-Mar	22-Mar
Aaba	VL	VL	VL	Afsaddiq	VL	VL	VL	Ain Ekrine	L	L	L
Amioun	L	L	L	Anfeh	L	L	L	Badbhoun	L	L	L
Barghoun	L	L	L	Barsa	L	L	L	Batroumine	L	L	L
Bdebba	L	L	L	Bechmizzine	L	L	L	Bednayel El-Koura	L	L	L
Bhabbouch El-Koura	L	L	L	Bkeftine	VL	VL	VL	Bnehran	M	M	M
Bqaiaa El-Koura	VL	VL	VL	Bsarma	VL	VL	VL	Btaaboura	L	L	L
Bterram	L	L	L	Btouratij	VL	VL	VL	Bziza	L	L	L
Dar Beehtar	ML	ML	ML	Dar Chmezzine	VL	VL	VL	Deddeh	L	L	L
Deir El-Balamand	ML	ML	ML	Fih	L	L	L	Hraiche	L	L	L
Ijdaabrine	L	L	L	Kaftoun	L	L	L	Kefraya El-Koura	L	L	L
Kfarakka	L	L	L	Kfarhata	L	L	L	Kfarhazir	L	L	L
Kfarkahel	VL	VL	VL	Kfarsaroun	L	L	L	Kosba	L	L	L
Mejdel el-Koura	ML	ML	ML	Nakhle	L	L	L	Qalhat	ML	ML	ML
Ras Masqa	L	L	L	Rechdibbine	ML	ML	ML	Zakroun	L	L	L
Zgharta El-Mtaouile	M	M	M								

Bcharre

Municipality	20-Mar	21-Mar	22-Mar	Municipality	20-Mar	21-Mar	22-Mar	Municipality	20-Mar	21-Mar	22-Mar
Aabdine	M	M	M	Bane	M	M	M	Barhelioun	M	M	M
Bazouone	M	M	M	Becharre	M	M	M	Beit Menzer	M	M	M
Billa	M	M	M	Blaouza	M	M	M	Bqaa Kafra	M	M	M
Bqerqacha	M	M	M	Breissat	M	M	M	Dimane	M	M	M
Hadath El Jobbeh	M	M	M	Hadchit	M	M	M	Hasroun	M	M	M
Mazraat Aassaf	M	M	M	Mazraat Bani Saab	M	M	M	Mchaa El-Jobbeh	MH	MH	MH
Metrit	M	M	M	Moghr El-Ahoual	M	M	M	Ouadi Qannoubine	M	M	M
Qanat	M	M	M	Qnayouer	M	M	M	Tourza	M	M	M

Batroun

Municipality	20-Mar	21-Mar	22-Mar	Municipality	20-Mar	21-Mar	22-Mar	Municipality	20-Mar	21-Mar	22-Mar
Aabrine	ML	ML	ML	Aalali	M	M	M	Aartiz	M	M	M
Abdelli	M	M	M	Ajdabra	ML	ML	ML	Assia	M	M	M
Basbina	L	L	L	Batroun	L	L	L	Bcheleh	M	M	M
Bechtoudar	M	M	M	Beit Chlala	M	M	M	Beit Kassab	M	M	M
Bijdarfil	L	L	L	Bqesmaya	M	M	M	Chatine	M	M	M
Chebtin	M	M	M	Chekka	L	L	L	Daael	M	M	M
Dahr Abi Yaghi	M	M	M	Daraya El-Batroun	M	M	M	Deir Billa	M	M	M
Deir Kfifane	M	M	M	Deir Mar Youhanna EL	M	M	M	Deir Mar Youssef Jra	M	M	M
Douma	M	M	M	Douq	M	M	M	Eddeh El-Batroun	M	M	M
Ftatah El-Batroun	M	M	M	Ghouma	M	M	M	Hadtoun	M	M	M
Hamat	L	L	L	Harbouna	M	M	M	Hardine	M	M	M
Helta	M	M	M	Hery	VL	VL	VL	Jebila	M	M	M
Jrabta El-Batroun	M	M	M	Jrane El-Batroun	M	M	M	Kfar Aabida	L	L	L
Kfar Halda	M	M	M	Kfarb Shlaimane	M	M	M	Kfarhatna	M	M	M
Kfarhay	L	L	L	Kfarhelos	M	M	M	Kfifane	ML	ML	ML

Kfour El Arabi	M	M	M	Koubba	L	L	L	Kour	ML	ML	ML
Mar Mama	M	M	M	Masrah	M	M	M	Mehmarch	M	M	M
Mrah Chdid	M	M	M	Mrah El Ziyat	M	M	M	Mrah El-Hajj	M	M	M
Nahle El-Batroun	M	M	M	Niha El-Batroun	M	M	M	Oujah El-Hajjar	L	L	L
Ouata Houb	M	M	M	Qatnaaoun	ML	ML	ML	Racha	M	M	M
Rachana	ML	ML	ML	Rachkida	ML	ML	ML	Ram El-Batroun	M	M	M
Ras Nahhach	ML	ML	ML	Selaata	L	L	L	Sghar	ML	ML	ML
Smar Jbayl	M	M	M	Sourat El-Batroun	M	M	M	Tannourine El-Faouqa	M	M	M
Tannourine Et-Tahta	M	M	M	Thoum	L	L	L	Toula El-Batroun	M	M	M
Zan	M	M	M								

Zgharta

Municipality	20-Mar	21-Mar	22-Mar	Municipality	20-Mar	21-Mar	22-Mar	Municipality	20-Mar	21-Mar	22-Mar
Aachach	VL	VL	VL	Aalma	L	L	L	Aarde	L	L	L
Aintourine	M	M	M	Arabet Qozhaya	M	M	M	Arde	VL	VL	VL
Arjis	VL	VL	VL	Asnoun	VL	VL	VL	Ayto	M	M	M
Basloukit	M	M	M	Bchannine	VL	VL	VL	Besebeel	VL	VL	VL
Bhairat Toula	M	M	M	Bnachee	L	L	L	Boussit	L	L	L
Danha	L	L	L	Daraiya Zgharta	VL	VL	VL	Deir Jdeide	VL	VL	VL
Ehden	M	M	M	Halan	L	L	L	Hariq Zgharta	VL	VL	VL
Houakir	VL	VL	VL	Hraiqis	M	M	M	Iaal	L	L	L
Ijbaa	M	M	M	Karm Saddeh	L	L	L	Kfarchakhna	VL	VL	VL
Kfardlaqous	VL	VL	VL	Kfarfou	L	L	L	Kfarhata Zgharta	VL	VL	VL
Kfarhoura	VL	VL	VL	Kfarsghab	M	M	M	Kfaryachit	VL	VL	VL
Kfarzaina	VL	VL	VL	Khaldiye	VL	VL	VL	Mazraat Ajbeaa	VL	VL	VL
Mazraat Et-Teffah	M	M	M	Mazraat Jneid	VL	VL	VL	Mejdlaia Zgharta	L	L	L
Merh Kfarsghab	L	L	L	Miryata	VL	VL	VL	Miziara	M	M	M
Mzraat Kefraya	L	L	L	Qorah Bach	VL	VL	VL	Rachiine	VL	VL	VL
Ras Kifa	L	L	L	Sakhra	L	L	L	Sebhel Zgharta	ML	ML	ML
Serhel	M	M	M	Tallet Zgharta	L	L	L	Toula Zgharta	M	M	M
Zgharta	L	L	L								

Minieh-Denniye

Municipality	20-Mar	21-Mar	22-Mar	Municipality	20-Mar	21-Mar	22-Mar	Municipality	20-Mar	21-Mar	22-Mar
Aasaymout	ML	ML	ML	Aaymar	M	M	M	Aazki	L	L	L
Ain El-Tineh-Miniyeh	M	M	M	Assoun	M	M	M	Bakhaaoun	M	M	M
Bchennata	M	M	M	Bechehara	ML	ML	ML	Beddawi	L	L	L
Behouaita	M	M	M	Beit El Foqss	M	M	M	Beit Haouik	M	M	M
Beit Zoud	M	M	M	Bekaasafrine	MH	MH	MH	Borj El Yahoudiyeh	ML	ML	ML
Bqarsouna	M	M	M	Btermaz	M	M	M	Debaael	M	M	M
Deir Ammar	L	L	L	Deir Nbough	ML	ML	ML	Haouaret-Miniyeh	M	M	M
Haql el Azimeh	M	M	M	Harf El Siyad	M	M	M	Hazmiye-Miniyeh	M	M	M
Izal	M	M	M	Jarjour	M	M	M	Jayroun	M	M	M
Kahf El-Malloul	M	M	M	Karm El-Moher	M	M	M	Kfar Binine	M	M	M
Kfarchalane	L	L	L	Kfarhabou	ML	ML	ML	Kharroub-Miniyeh	M	M	M
Mazraat El-Kreme	M	M	M	Mazraat Ketrane	M	M	M	Merkebta	L	L	L
Minyeh	VL	VL	VL	Mrah El Sfirat	M	M	M	Mrah Sraj	M	M	M
Mrebbine	M	M	M	Nabi Youcheaa	L	L	L	Nemrine	M	M	M

Qarhaiya	ML	ML	ML	Qarne	M	M	M	Qarsita	M	M	M
Qattineh-Miniyeh	M	M	M	Qemmamine	M	M	M	Qraine	M	M	M
Raouda-Aadoua	VL	VL	VL	Rihaniyet-Miniyeh	VL	VL	VL	Sfireh	M	M	M
Sir Ed-Danniyeh	M	M	M	Tarane	M	M	M	Terbol-Miniyeh	M	M	M
Zaghartaghrine	M	M	M	Zouq Bhannine	VL	VL	VL				

Nabatiye

Nabatiye

Municipality	20-Mar	21-Mar	22-Mar	Municipality	20-Mar	21-Mar	22-Mar	Municipality	20-Mar	21-Mar	22-Mar
Aabba	VL	VL	VL	Aazzi	VL	VL	VL	Adchit El-Chqif	VL	VL	VL
Ain Bou Swar	VL	VL	VL	Ain Kana	L	L	L	Ali El-TaHER	L	L	L
Ansar	L	L	L	Arab Salim	VL	VL	VL	Arnoun	L	L	L
Bfaroue	VL	VL	VL	Breyqaah	VL	VL	VL	Charqiyeh	VL	VL	VL
Choukine	VL	VL	VL	Deir El Zahrani	VL	VL	VL	Doueur El-Nabatiyeh	VL	VL	VL
Habbouch El-Nabatiye	VL	VL	VL	Hamra El-Nabatiyeh	VL	VL	VL	Harouf El-Nabatiyeh	VL	VL	VL
Hmaile	VL	VL	VL	Houmin El Faouqa	L	L	L	Houmin El Tahta	L	L	L
Jarjough	VL	VL	VL	Jbaah El-Nabatiyeh	L	L	L	Jebchit	VL	VL	VL
Kfar Djal El-Nabatiy	VL	VL	VL	Kfar Remmane	L	L	L	Kfar Sir	VL	VL	VL
Kfar Tebnit	L	L	L	Kfarfila	L	L	L	Kfour El-Nabatieh	VL	VL	VL
Mayfadoun	VL	VL	VL	Mazraat Bsaffour	VL	VL	VL	Mazraat Chalbaal	VL	VL	VL
Mazraat Dmoul	VL	VL	VL	Mazraat El Khreibeh	L	L	L	Mazraat El-Bayad El-	VL	VL	VL
Mazraat Kfarjaouz	VL	VL	VL	Mazraat Qalaat Meiss	VL	VL	VL	Nabatiyeh El-Fawka	VL	VL	VL
Nabatiyeh Et-Tahta	VL	VL	VL	Namiriyeh	VL	VL	VL	Qaaqaaiyet El Jisr	VL	VL	VL
Qossabeh El-Nabatiy	VL	VL	VL	Roumine	L	L	L	Sarba El-Nabatieh	L	L	L
Sir El-Gharbiyeh	VL	VL	VL	Toul	VL	VL	VL	Yehmor El-Nabatiyeh	L	L	L
Zaoutar El Charqiyeh	VL	VL	VL	Zaoutar El-Gharbiyeh	VL	VL	VL	Zebdine El-Nabatiyeh	VL	VL	VL
Zefta	VL	VL	VL								

Hasbaiya

Municipality	20-Mar	21-Mar	22-Mar	Municipality	20-Mar	21-Mar	22-Mar	Municipality	20-Mar	21-Mar	22-Mar
Aain Jarfa	VL	VL	VL	Abou Qamha	VL	VL	VL	Ain Qania	VL	VL	VL
Bourghos	VL	VL	VL	Chebaa	L	L	L	Chouaya Hasbaya	VL	VL	VL
Dellafeh	L	L	L	Fardiss Hasbaiya	VL	VL	VL	Hasbaya	L	L	L
Hbariyeh	VL	VL	VL	Kaoukaba Hasbaiya	VL	VL	VL	Kfar Chouba	VL	VL	VL
Kfar Hamam	VL	VL	VL	Kfeir El-Zait	L	L	L	Khalwat Hasbaya	L	L	L
Khreibet Hasbaiya	VL	VL	VL	Majidiyeh Hasbaiya	VL	VL	VL	Marj Ez-Zhour (Haouc	L	L	L
Meri	VL	VL	VL	Mimass	VL	VL	VL	Rachaiya El-Fokhar	VL	VL	VL
Salaiyeb	VL	VL	VL								

Marjayoun

Municipality	20-Mar	21-Mar	22-Mar	Municipality	20-Mar	21-Mar	22-Mar	Municipality	20-Mar	21-Mar	22-Mar
Aalmane Marjaayoun	VL	VL	VL	Aamra	VL	VL	VL	Adayseh Marjaayoun	L	L	L
Adchit El-Koussair	VL	VL	VL	Ain Aarab Marjaayoun	VL	VL	VL	Bani Haiyann	VL	VL	VL
Blatt Marjaayoun	VL	VL	VL	Blida	VL	VL	VL	Borj El-Moulouk	L	L	L
Boueyda Marjaayoun	L	L	L	Deir Mimass	L	L	L	Deir Siriane	L	L	L
Dibbine	VL	VL	VL	Ebel El Saqi	VL	VL	VL	Houla	L	L	L
Houra	ML	ML	ML	Kfar Kila	L	L	L	Khiam Marjaayoun	VL	VL	VL

Klayaa	L	L	L	Majdel Selem	VL	VL	VL	Marjaayoun	VL	VL	VL
Markaba	L	L	L	Mays El-Jabal	L	L	L	Mazraat Doumiat	L	L	L
Mazraat Sarada	VL	VL	VL	Mhaibib	VL	VL	VL	Qabriqha	VL	VL	VL
Qantara	VL	VL	VL	Rab El-Thalathine	L	L	L	Saouaneh Marjayoun	VL	VL	VL
Talloussa	VL	VL	VL	Taybeh Matjaayoun	L	L	L	Touline	VL	VL	VL

Bent Jbail

Municipality	20-Mar	21-Mar	22-Mar	Municipality	20-Mar	21-Mar	22-Mar	Municipality	20-Mar	21-Mar	22-Mar
Ain-Ebel	VL	VL	VL	Aitaroun	VL	VL	VL	Aynata Bint Jbeil	VL	VL	VL
Ayta El-Chaeb	VL	VL	VL	Ayta El-Jabal	VL	VL	VL	Beit Lif	VL	VL	VL
Beit Yahoun	VL	VL	VL	Bint Jbeil	VL	VL	VL	Borj Qalaway	VL	VL	VL
Braachit	VL	VL	VL	Chakra	VL	VL	VL	Debel	VL	VL	VL
Deir Antar	VL	VL	VL	Froun	VL	VL	VL	Ghandouriyeh Bint Jb	VL	VL	VL
Hanine	VL	VL	VL	Hariss	VL	VL	VL	Hdatha	VL	VL	VL
Jmeymeh	VL	VL	VL	Kafra Bint Jbeil	L	L	L	Kfar Dounine	VL	VL	VL
Khirbet Selm	VL	VL	VL	Kounine	VL	VL	VL	Maroun El Ras	VL	VL	VL
Qalaway	VL	VL	VL	Qaouzah	VL	VL	VL	Qatmoun	VL	VL	VL
Ramya Bint Jbeil	VL	VL	VL	Rchaf	VL	VL	VL	Rmeich	VL	VL	VL
Safad Al Battikh	VL	VL	VL	Salhaneh	VL	VL	VL	Serbine	VL	VL	VL
Sultanieh Bint Jbeil	VL	VL	VL	Tibnine	VL	VL	VL	Tiri	VL	VL	VL
Yaroun	VL	VL	VL	Yater	VL	VL	VL				

Mont Liban

Jbail

Municipality	20-Mar	21-Mar	22-Mar	Municipality	20-Mar	21-Mar	22-Mar	Municipality	20-Mar	21-Mar	22-Mar
Aabeydat	M	M	M	Aalita	L	L	L	Aamchit	VL	VL	VL
Aarab El-Lahib	M	M	M	Aarasta	M	M	M	Adonis Jbeil	M	M	M
Afqa Jbeil	M	M	M	Ain El Delbeh Jbeil	M	M	M	Ain El-Ghouayba	M	M	M
Ain Jrain	M	M	M	Ain Kfah	M	M	M	Almat El Chemaliyat	M	M	M
Almat El-Jenoubiya	M	M	M	Aqoura	M	M	M	Bayzoun	M	M	M
Bchille Jbeil	M	M	M	Bechtida	M	M	M	Behdaydat	M	M	M
Beit Habbaq	L	L	L	Bejjeh	ML	ML	ML	Bekhaaz	ML	ML	ML
Berbara Jbeil	L	L	L	Bintael	ML	ML	ML	Birket Hjoula	M	M	M
Blatt Jbeil	L	L	L	Boulhos	M	M	M	Breyj Jbeil	M	M	M
Chamat	L	L	L	Chikhane	L	L	L	Chmout	ML	ML	ML
Eddeh Jbeil	L	L	L	Ehmej	M	M	M	Fatre	L	L	L
Ferhet	M	M	M	Fghal	ML	ML	ML	Frat	M	M	M
Ghabat	M	M	M	Ghalboun	ML	ML	ML	Gharzouz	L	L	L
Ghofrine	L	L	L	Habil	M	M	M	Halate	L	L	L
Haqel	M	M	M	Hbaine	L	L	L	Hboub	L	L	L
Hdeine	M	M	M	Hema Er-Rehban	M	M	M	Hema Mar Maroun Aann	M	M	M
Hjoula	M	M	M	Hosrayel	L	L	L	Hsarat	L	L	L
Hsoun	M	M	M	Jaj	M	M	M	Janne	M	M	M
Jbeil	VL	VL	VL	Jeddeyl Jbeil	VL	VL	VL	Jlisse	M	M	M
Jouret El-Qattine	M	M	M	Kfar Baal Annaya	M	M	M	Kfar Kidde	ML	ML	ML
Kfar Kouas	ML	ML	ML	Kfar Mashoun	L	L	L	Kfoun	M	M	M

Kharbe Jbeil	L	L	L	Laqlouq	M	M	M	Lassa	M	M	M
Lehfed	M	M	M	Maad	L	L	L	Mar Sarkis	M	M	M
Mastita	VL	VL	VL	Mayfouq	M	M	M	Mazraat El Siyad	M	M	M
Mazraat El-Maaden	M	M	M	Mechane	M	M	M	Mechmech Jbeil	M	M	M
Mehrin	L	L	L	Mejdel El-Akoura	M	M	M	Mghayreh Jbeil	M	M	M
Mounsef	L	L	L	Nahr Ibrahim	L	L	L	Qahmez	M	M	M
Qartaba	M	M	M	Qartaboun	VL	VL	VL	Qattara Jbeil	M	M	M
Qorqraya	M	M	M	Ramout	ML	ML	ML	Ras Osta	M	M	M
Rihane Jbeil	VL	VL	VL	Sakiet El-Khayt	ML	ML	ML	Saqi Richmaya	M	M	M
Sebrine	M	M	M	Seraita	M	M	M	Souane Jbeil	M	M	M
Tadmor	M	M	M	Tartej	M	M	M	Torzaiya	M	M	M
Yanouh Jbeil	M	M	M	Zibdine Jbeil	ML	ML	ML				

El Metn

Municipality	20-Mar	21-Mar	22-Mar	Municipality	20-Mar	21-Mar	22-Mar	Municipality	20-Mar	21-Mar	22-Mar
Aain El-Qabu	M	M	M	Aain El-Qach	M	M	M	Aain El-Teffaha	M	M	M
Aain el-Safssaf El-M	M	M	M	Abou Mizane	M	M	M	Ain Aar	M	M	M
Ain Alaq	M	M	M	Ain El-Kharroube	M	M	M	Ain El-Sendianeh	M	M	M
Ain El-Zeitoune	M	M	M	Ain Saadeh	M	M	M	Aintoura El-Matn	M	M	M
Amaret Chalhoub	VL	VL	VL	Antelias	L	L	L	Atchaneh	M	M	M
Ayroun	M	M	M	Baabdat	M	M	M	Baouchariyeh	L	L	L
Baskinta	M	M	M	Beit Chabab	M	M	M	Beit El-Chaar	ML	ML	ML
Beit El-Kekko	M	M	M	Beit Mery	M	M	M	Bhersaf	M	M	M
Bikfaya	M	M	M	Biyakout	L	L	L	Bnabil	M	M	M
Bourj Hammoud	VL	VL	VL	Bqennaya	L	L	L	Broummana El-Matn	M	M	M
Bsalim	ML	ML	ML	Bsifrine	M	M	M	Bteghrine	M	M	M
Chaouiye	M	M	M	Chouaya El-Matn	M	M	M	Choueir	M	M	M
Chrine	M	M	M	Dahr El Sawan El-Mat	M	M	M	Daychouniyeh	ML	ML	ML
Dbayeh	VL	VL	VL	Deir Chamra	M	M	M	Deir Mar Abda el Mch	VL	VL	VL
Deir Mar Roukouz	L	L	L	Deir Tamiche	L	L	L	Dik El-Mehdi	ML	ML	ML
Dikwaneh	VL	VL	VL	Douar El-Matn	M	M	M	Fanar	L	L	L
Fraike	ML	ML	ML	Haret El-Ballaneh	L	L	L	Hbous	M	M	M
Himlaya	M	M	M	Jal El Did	L	L	L	Jdeideh El-Metn	L	L	L
Jouar El-Matn	M	M	M	Jouret El-Ballout	M	M	M	Kaaqour	M	M	M
Kfar Aaqab	M	M	M	Kfertay El-Matn	M	M	M	Khenchara	M	M	M
Khillet El-Mtain	M	M	M	Konnabat Broummana	M	M	M	Konnabat Salima	M	M	M
Machraah El-Matn	M	M	M	Majdel Tarchich	M	M	M	Majzoub	L	L	L
Mansouriyeh El-Metn	L	L	L	Mar Boutros Karm Et-	M	M	M	Mar Chaya et Mzekke	M	M	M
Mar Moussa Ed-Douar	M	M	M	Marjaba	M	M	M	Masqa	M	M	M
Mayasse	M	M	M	Mazraat Deir Aoukar	L	L	L	Mazraat El-Hadirat	L	L	L
Mazraat Yachouh	ML	ML	ML	Mchikha	M	M	M	Menqlet Mezher	L	L	L
Mhaydseh Matn	M	M	M	Mkalles	L	L	L	Mrouj	M	M	M
Mtain	M	M	M	Mtayleb	ML	ML	ML	Nabay	M	M	M
Naccache	L	L	L	Ouadi Chahine	M	M	M	Ouadi El-Karm El-Mat	M	M	M
Ouata El-Mrouj	M	M	M	Ouyoun El-Matn	M	M	M	Qornet Chehwan	M	M	M
Qornet El-Hamra	L	L	L	Roumieh	M	M	M	Sfeilet Bikfaya	M	M	M
Sinn El-Fil	L	L	L	Zabbougha	M	M	M	Zalqa	L	L	L

Zarououn	M	M	M	Zekrite	VL	VL	VL	Zighrine El-Matn	M	M	M
Zouk El-Khrab	L	L	L								

Chouf

Municipality	20-Mar	21-Mar	22-Mar	Municipality	20-Mar	21-Mar	22-Mar	Municipality	20-Mar	21-Mar	22-Mar
Aalmane El-Chouf	M	M	M	Aammq El-Chouf	M	M	M	Ain Ouzein	M	M	M
Ain Qani	M	M	M	Ain Zhalta	M	M	M	Ainbal	M	M	M
Amatour	M	M	M	Anout	M	M	M	Atrine	M	M	M
Baadarane	M	M	M	Baaqline	M	M	M	Baasir	M	M	M
Barja	M	M	M	Barouk	M	M	M	Bater	M	M	M
Batloun	M	M	M	Bayqoun	M	M	M	Bchetfine	M	M	M
Beiteddine	M	M	M	Benouati Ech-Chouf	M	M	M	Berjein	M	M	M
Bireh et Mtalleh	M	M	M	Biret El-Chouf	M	M	M	Bkechtine Ouel Mchei	M	M	M
Bkifa El-Chouf	M	M	M	Botme	M	M	M	Bqaiaa Ech-Chouf	M	M	M
Bsaba El-Chouf	ML	ML	ML	Chammis El-Chouf	M	M	M	Chehim	M	M	M
Chemaarine	M	M	M	Chourit	M	M	M	Daher El-Chouf	M	M	M
Dalhoun	M	M	M	Damour	L	L	L	Daraya El-Chouf	M	M	M
Deir El-Moukhalles	M	M	M	Deir Baba	M	M	M	Deir Dourit	M	M	M
Deir El-Qamar	M	M	M	Deir Kouche	M	M	M	Dibbieh	M	M	M
Dmit	ML	ML	ML	Fouara Jaafar	M	M	M	Fraidis El-Chouf	M	M	M
Ghabet Jaafar	M	M	M	Gharife	M	M	M	Haret Jandal	M	M	M
Hasrout	M	M	M	Jadra	L	L	L	Jahlieh	M	M	M
Jbeih El-Chouf	M	M	M	Jdeidet El-Chouf	M	M	M	Jiyeh	L	L	L
Jleilyeh	M	M	M	Jmailiyeh	M	M	M	Joun	M	M	M
Kahlounie El-Chouf	M	M	M	Ketermaya	M	M	M	Kfar Faqoud	M	M	M
Kfar Hamal	M	M	M	Kfar Him	M	M	M	Kfar Katra	M	M	M
Kfar Niss	M	M	M	Kfar hay	M	M	M	Kfarnabrakh	M	M	M
Khirbet Bisri	L	L	L	Knayse El-Chouf	M	M	M	Maaniyeh	M	M	M
Maasser Beiteddine	M	M	M	Maasser El-Chouf	M	M	M	Majdalouna	M	M	M
Majdel El-Meouch	M	M	M	Mazboud	M	M	M	Mazmoura	M	M	M
Mazraat El Chouf	M	M	M	Mazraat El Daher	ML	ML	ML	Mazraat El-Douair	M	M	M
Mechref	ML	ML	ML	Mghairie	M	M	M	Mghayrie El-Chouf	M	M	M
Moukhtara	M	M	M	Mrusti	M	M	M	Mtolle	M	M	M
Naameh	L	L	L	Niha El-Chouf	M	M	M	Ouadi Abou Yousef	M	M	M
Ouadi Ed-Deir	M	M	M	Ouadi El-Sit	M	M	M	Ouadi bnehlay	M	M	M
Qraibeh	M	M	M	Qreiaa	M	M	M	Rmayle El-Chouf	M	M	M
Semqaniyeh	M	M	M	Sibline	M	M	M	Sirjbeil	M	M	M
Warhanieh	M	M	M	Werdaniyeh	M	M	M	Zaarourieh	M	M	M

Baabda

Municipality	20-Mar	21-Mar	22-Mar	Municipality	20-Mar	21-Mar	22-Mar	Municipality	20-Mar	21-Mar	22-Mar
Abadiyeh	M	M	M	Ain Mouaffaq	M	M	M	Araiya	M	M	M
Arbaniyeh	M	M	M	Arsoun	M	M	M	Baabda	L	L	L
Baalchmey	M	M	M	Bmaryam	M	M	M	Bourj El-Brajneh	VL	VL	VL
Boutchay	L	ML	L	Bsaba Baabda	ML	ML	ML	Btekhney	M	M	M
Btibyat	M	M	M	Bzebdine	M	M	M	Chbeniyeh	M	M	M
Chiyah	VL	VL	VL	Chmeisset Baabda	M	M	M	Chouit	M	M	M
Deir El-harf	M	M	M	Deir Khouna	M	M	M	Dlaybeh	M	M	M

Falougha	M	M	M	Furn El-Chebbak	VL	VL	VL	Hadath Beyrouth	L	L	L
Halaliyeh Baabda	M	M	M	Hammana	M	M	M	Haret El Sett	M	M	M
Haret Hamze	M	M	M	Haret Hreik	VL	VL	VL	Hasbaiya El-Metn	M	M	M
Jouar El-Hoz	M	M	M	Jouret Arsoun	M	M	M	Kfar Chima	L	L	L
Kfar Selouane	M	M	M	Khalouat Baabda	M	M	M	Kneisset Baabda	M	M	M
Laylakeh	VL	L	VL	Louayzeh Baabda	L	L	L	Merdache	L	L	L
Mzairaa Baabda	M	M	M	Ouadi Chahrour El Ol	ML	ML	ML	Ouadi Chahrour El So	ML	ML	ML
Qalaa Baabda	M	M	M	Qhraybe Baabda	M	M	M	Qobbayaa	M	M	M
Qornayel	M	M	M	Qortada	M	M	M	Qrayeh Baabda	M	M	M
Qsaibeh Baabda	M	M	M	Qtale Baabda	M	M	M	Ras El Metn	M	M	M
Ras El-Haref	M	M	M	Rouayset El-Ballout	M	M	M	Salima Baabda	M	M	M
Tahouitat El Ghadir	VL	L	VL	Tarchich	M	M	M	Zandouqa	M	M	M

Aley

Municipality	20-Mar	21-Mar	22-Mar	Municipality	20-Mar	21-Mar	22-Mar	Municipality	20-Mar	21-Mar	22-Mar
Abey	M	M	M	Aghmid	M	M	M	Ain Dara	M	M	M
Ain Drafil	M	M	M	Ain El Halazoun	M	M	M	Ain El-Rmmaneh	M	M	M
Ain Jedideh	M	M	M	Ain Ksour	M	M	M	Ain Onoub	M	M	M
Ain Traz	M	M	M	Ainab	M	M	M	Aley	M	M	M
Aramoun	ML	ML	ML	Aytat	M	M	M	Azouniyeh	M	M	M
Baawerta	M	M	M	Badghan Oua Wadi Bad	M	M	M	Bassatine	M	M	M
Bayssour	M	M	M	Bchamoun	ML	ML	ML	Bdadoun	M	M	M
Behouara	M	M	M	Bennay	M	M	M	Bhamdoun El-Dayaa	M	M	M
Bhamdoun El-Mhatta	M	M	M	Bkhechtey	M	M	M	Bleibel	M	M	M
Bmakine	M	M	M	Bmehray	M	M	M	Bouzrid	M	M	M
Bserrine	M	M	M	Bsous	M	M	M	Btalloun	M	M	M
Btater	M	M	M	Chanay	M	M	M	Charoun	M	M	M
Chartoun	M	M	M	Chemlane	M	M	M	Chouefat El-Aamrous	L	L	L
Chouefat El-Oumara	L	L	L	Chouefat El-Quoubbe	L	L	L	Dakkoun	M	M	M
Deir Qoubel	ML	ML	ML	Dfoun	M	M	M	Douair El Remmaneh	M	M	M
Ghaboun	M	M	M	Habramoun	M	M	M	Homs Oua Hama	M	M	M
Houmal	M	M	M	Jisr El Qadi	ML	ML	ML	Kehaleh	M	M	M
Keyfoun	M	M	M	Kfar Aamey	M	M	M	Kommatyeh	M	M	M
Maasrati	M	M	M	Majdel Baana	M	M	M	Mansourieh et Ain El	M	M	M
Mazraat El-Nahr	M	M	M	Mchakhte	M	M	M	Mecherfeh	M	M	M
Mejdaya	M	M	M	Mrayjat	M	M	M	Ramliyah	M	M	M
Rechmaya	M	M	M	Rejmeh	M	M	M	Remhala	M	M	M
Rouaysset El Neemane	M	M	M	Saoufar	M	M	M	Selfaya	M	M	M
Sirhmoul	M	M	M	Souq El Ghareb	M	M	M	Taazanieh	M	M	M

Kesrouane

Municipality	20-Mar	21-Mar	22-Mar	Municipality	20-Mar	21-Mar	22-Mar	Municipality	20-Mar	21-Mar	22-Mar
Achkout	M	M	M	Adma Oua Dafneh	L	L	L	Ain Ed-Delbe Kesroua	M	M	M
Ain El-Rihane	M	M	M	Aintoura Kesrouane	L	L	L	Ajaltoun	M	M	M
Akaybeh Kesrouane	L	L	L	Aramoun Kesrouane	M	M	M	Azra ouel Ozor	M	M	M
Ballouneh	M	M	M	Batha	M	M	M	Bekaatat Achkout	M	M	M
Bekaatat Kanaan	M	M	M	Bizhel	L	L	L	Bouar	L	L	L
Bqaatouta	M	M	M	Bqaq Ed-Dine	L	L	L	Bzommar	M	M	M

Chahtoul	M	M	M	Chnaniir	M	M	M	Chouan	M	M	M
Daraya Kesrouane	M	M	M	Darououn	M	M	M	Deir Baqlouch	M	M	M
Dlebta	M	M	M	Eghbeh	M	M	M	Faraya	M	M	M
Fatka	ML	ML	ML	Feytroun	M	M	M	Ghazir	L	L	L
Ghbaleh Kesrouane	M	M	M	Ghedrass	M	M	M	Ghosta	M	M	M
Ghynéh	M	M	M	Harharaya w Kattine	M	M	M	Harissa Kesrouane	M	M	M
Hayata	M	M	M	Hosein	M	M	M	Hrajel	M	M	M
Jdeideh Ghazir	M	M	M	Jeita	L	L	L	Jounieh Ghadir	L	L	L
Jounieh Haret Sakhr	L	L	L	Jounieh Salel Alma	L	L	L	Jounieh Sarba	VL	VL	VL
Jouret Bedrane	M	M	M	Jouret Mhad	M	M	M	Jouret Termos	M	M	M
Kfar Debiane	M	M	M	Kfar Tay Kesrouane	M	M	M	Kfar Yassine	VL	VL	VL
Kfour Kesrouane	M	M	M	Kharayeb Nahr Ibrahi	ML	ML	ML	Klayaat Kesrouane	M	M	M
Maarab	M	M	M	Maaysra Kesrouane	ML	ML	ML	Mayrouba	M	M	M
Mazraat Er-Ras	L	L	L	Mazraat Mrah El-Mir	M	M	M	Mchaa El Ftouh	M	M	M
Mchaa Faraya	M	M	M	Mchaa Kfar Dibiane	M	M	M	Mghaer	M	M	M
Mradiyeh	ML	ML	ML	Nahr Ed-Dahab	M	M	M	Nammoura Kesrouane	ML	ML	ML
Ouata El Jaouz	M	M	M	Ouata Sillam	VL	VL	VL	Raachine	M	M	M
Rayfoun	M	M	M	Safra Kesrouane	VL	VL	VL	Shayle Kesrouane	M	M	M
Tabarja	VL	VL	VL	Yahchouch	M	M	M	Zaaytneh	M	M	M
Zeytoun	L	L	L	Zouk Mikael	L	L	L	Zouk Mosbeh	L	L	L

Baalbek_Hermel

Baalbek

Municipality	20-Mar	21-Mar	22-Mar	Municipality	20-Mar	21-Mar	22-Mar	Municipality	20-Mar	21-Mar	22-Mar
Aadous	L	L	L	Aamchki	M	M	M	Aarsal	MH	MH	MH
Ain Baalbek	MH	MH	MH	Ain Bourday	M	M	M	Ain El-Benye	M	M	M
Ain El-Jaouz Baalbek	M	M	M	Ain El-Siya Chadoura	M	M	M	Al Khodr Baalbek	M	M	M
Al Nabi Chit	ML	ML	ML	Aynata Baalbek	M	M	M	Baalbek	M	M	M
Bachwat	M	M	M	Barqa	M	M	M	Bednayel Baalbak	L	L	L
Beit Chama	ML	ML	ML	Bijjaje	MH	MH	MH	Bouday	L	L	L
Brital	M	M	M	Btadi	L	L	L	Chaat	M	M	M
Chaibe	M	M	M	Chlifa	L	L	L	Chmestar	L	L	L
Dar El-Oussa	M	M	M	Deir El-Ahmar	ML	ML	ML	Deir Mar Maroun Baal	M	M	M
Douris	M	M	M	Fakiha	M	M	M	Hadath Baalbek	L	L	L
Ham	M	M	M	Haour Taala	M	M	M	Hizzine	L	L	L
Hlebta	M	M	M	Hosh Barada	L	L	L	Hosh El Dahab	L	L	L
Hosh El Snid	L	L	L	Hosh El-Nabi	L	L	L	Hosh El-Rafiq	L	L	L
Hosh Tal Safiya	L	L	L	Hrebta	M	M	M	laat	M	M	M
Jebaa	L	L	L	Jenta	L	L	L	Kfar Dabach	L	L	L
Kfar Dane	L	L	L	Khraibeh El-Hermel	M	M	M	Khreibet Baalbek	M	M	M
Kneisset Baalbek	M	M	M	Labueh	MH	MH	MH	Maarboun	M	M	M
Majdaloun	L	L	L	Maqneh	M	M	M	Mazraat Beit Mcheik	M	M	M
Misraya	L	L	L	Mograq	MH	MH	MH	Nabha El-Damdoum	M	M	M
Nabi Chbay	M	M	M	Nabi Osman	MH	MH	MH	Nahleh baalbek	M	M	M
Ouadi El-Oss	M	M	M	Qaa Baayoun	ML	ML	ML	Qaa Jouar Maqiye	VL	VL	VL
Qaa Ouadi El-Khanzir	L	L	L	Qah Baalbek	ML	ML	ML	Qarha Baalbek	M	M	M

Qsarnaba	ML	ML	ML	Ram Baalbek	M	M	M	Ras Baalbek El Sahl	M	M	M
Ras Baalbek El-Charq	M	M	M	Riha	M	M	M	Saaide	L	L	L
Sboubba	M	M	M	Seriine El-Tahta	L	L	L	Slouqi	L	L	L
Taiba Baalbek	ML	ML	ML	Talia	L	L	L	Taraiya	L	L	L
Temnin El Fawqa	L	L	L	Temnin El-Tahta	L	L	L	Tfail	M	M	M
Yahfoufa	M	M	M	Yammouneh	M	M	M	Younine	M	M	M
Zboud	M	M	M								

Hermel

Municipality	20-Mar	21-Mar	22-Mar	Municipality	20-Mar	21-Mar	22-Mar	Municipality	20-Mar	21-Mar	22-Mar
Charbine El-Hermel	M	M	M	Hermel Jbab	M	M	M	Hermel	L	L	L
Maaysra El-Hermel	M	M	M	Michaa Mrajhine	L	L	L	Ouadi Faara	M	M	M
Ras Baalbek - Ouadi	M	M	M	Ras Baalbek El Gharb	M	M	M	Zighrine	M	M	M

Akkar

Akkar

Municipality	20-Mar	21-Mar	22-Mar	Municipality	20-Mar	21-Mar	22-Mar	Municipality	20-Mar	21-Mar	22-Mar
Aain Tinta	L	VL	VL	Aaiyat	ML	ML	ML	Aakkar El-Aatiqa	M	M	M
Aamar Akkar	L	VL	VL	Aamar El Baykat	L	L	VL	Aamayer	M	M	M
Aamriyet Akkar	L	L	L	Aandqet	M	M	M	Aarmeh	L	VL	VL
Aarqa	L	VL	VL	Aawaynat	M	M	M	Aayoun Akkar	L	VL	VL
Abboudiye	L	L	VL	Ain El-Zeit	L	VL	VL	Ain Yaaqoub	ML	ML	ML
Akroum	M	M	M	Aridet Cheikh Zennad	L	L	L	Baldeh w Mazraat Bal	L	L	VL
Barcha	L	L	VL	Bardeh	M	M	M	Bebnine	VL	VL	VL
Beino	L	L	L	Beit Ayoub	M	M	M	Beit El-Haouch	VL	VL	VL
Beit Mellat	L	L	VL	Beit Younes	M	M	M	Berbara Akkar	L	VL	VL
Berqayel	L	L	L	Bezbina	ML	ML	ML	Bireh Akkar	M	M	M
Borj	L	L	L	Bqerezla	VL	VL	VL	Bzal	ML	ML	ML
Chane	M	M	M	Chaqdouf	L	VL	VL	Charbila	L	L	VL
Cheikh Mohammad	L	L	VL	Cheikh Taba Es-Sahl	L	L	VL	Cheikh Taba	L	L	VL
Cheikh Zennad	L	L	L	Cheikhlar	ML	ML	ML	Chir Hmairine	L	L	VL
Daghle	L	L	L	Dahr Laissine	L	L	VL	Darine	L	L	VL
Dawra	M	M	M	Dawsa w Baghdadadi	L	VL	VL	Dayret Nahr El-Kabir	ML	ML	ML
Deir Dalloum	L	VL	VL	Deir Jennine	L	L	VL	Denbou	M	M	M
Dibbabiyyeh	L	L	VL	Douair Aadwiyeh	L	VL	VL	Fassikine	L	VL	VL
Fnaydek	M	M	M	Fraydes Akkar	L	VL	VL	Ghazayle	L	L	VL
Habchit	M	M	M	Hakour	L	VL	VL	Halba	L	L	VL
Haouchab	L	L	VL	Hayssat	L	VL	VL	Haytla	L	L	VL
Hayzouq	L	L	VL	Hedd	L	L	VL	Hmaira Akkar	VL	VL	VL
Hmaiss Akkar	L	L	VL	Hnaider	M	M	M	Hokr Ed-Dahri	L	L	VL
Hokr Etti	L	L	VL	Hokr Jouret Srar	L	L	VL	Houaich	L	L	L
Hrar	M	M	M	Idbil	L	L	VL	Ilal	L	L	VL
Janine	L	VL	VL	Jdeidet El-Joumeh	L	L	VL	Jdeidet El-Kaiteh	VL	VL	VL
Jebayel	L	L	VL	Kafr	ML	ML	ML	Kafr	L	L	L
Karm Asfour	L	L	VL	Kfar Melki Akkar	L	VL	VL	Kfar Noun	L	L	VL
Kfarharra	L	L	VL	Khalsa	M	M	M	Kharnoubet Akkar	L	L	VL

Khirbet Daoud Aakkar	M	M	M	Khirbet El Remmane	M	M	M	Khirbet Shar	L	VL	VL
Khoreybet El-Jindi	L	L	VL	Khreibet Aakkar	M	M	M	Kneisset Aakkar	L	VL	VL
Kneisset Hnaider	M	M	M	Knisse	L	L	VL	Kroum El-Aarab	L	L	VL
Kwachra	L	VL	VL	Kweykhath	L	L	VL	Machta Hammoud	M	M	M
Majdala	VL	VL	VL	Majdel Akkar	L	L	L	Mar Touma	VL	VL	VL
Marlaya Melhem	L	VL	VL	Mashha	L	L	VL	Massoudiye	L	L	VL
Mazraat Beit Ghattas	VL	VL	VL	Mazraat En-Nahriye	M	M	M	Mechmech	ML	ML	ML
Memneh	M	M	M	Mhammara	VL	VL	VL	Mighraq Aakkar	L	VL	VL
Minyara	L	L	VL	Mogayteh	ML	L	L	Mounjez	ML	L	L
Msalla	L	L	VL	Mzeihmeh	L	L	VL	Nfaisheh	L	L	VL
Noura Et-Tahta	L	L	VL	Ouadi El-Haour	L	L	VL	Ouadi El-Jamous	VL	VL	VL
Ouyoun El-Ghizlane	L	L	L	Qaabarine	L	VL	VL	Qabaait	ML	ML	ML
Qachlaq	L	L	VL	Qantara Aakkar	L	L	VL	Qarha Aakkar	M	M	M
Qarqaf	VL	VL	VL	Qboula	L	L	L	Qleiaat Aakkar	L	L	L
Qloud El-Baqie	L	L	L	Qobaiyat Aakkar	M	M	M	Qobbat Chamrat	L	L	L
Qorayat	M	M	M	Qornet Aakkar	M	M	M	Qsair Aakkar	ML	L	L
Rahbe	L	L	L	Rihaniyet Aakkar	L	L	VL	Rmah	ML	ML	ML
Rmoul	L	L	L	Saadine	L	L	VL	Sadaqa	M	M	M
Saidnaya	L	L	VL	Sammouniye	L	L	VL	Sayssouq	ML	ML	ML
Semmaqiye	L	L	VL	Semmaqli	L	VL	VL	Sfinet El-Dreib	L	L	VL
Sfinet El-Qaitaa	L	L	L	Sindyanet Zeidane	ML	ML	ML	Souaisset Aakkar	L	L	VL
Srar	L	L	VL	Tal Abbas El Gharby	L	L	VL	Tal Abbas El-Charqy	L	L	VL
Tal Biret	L	L	VL	Tal Hmayra	L	L	VL	Tal Maayan Tal Kiri	L	VL	VL
Tal Sibel	L	VL	VL	Tallet Chattaha	L	VL	VL	Tikrit	L	L	L
Tleil	L	L	VL	Tshea	M	M	M	Zawarib	L	L	VL
Zouq El Hosniyeh	VL	VL	VL	Zouq El-Haddara	VL	VL	VL	Zouq El-Hbalsa	VL	VL	VL
Zouq El-Mogachrine	VL	VL	VL								

Sud

Sour

Municipality	20-Mar	21-Mar	22-Mar	Municipality	20-Mar	21-Mar	22-Mar	Municipality	20-Mar	21-Mar	22-Mar
Aaiyeh	L	L	L	Aalma El-Chaab	L	L	L	Aaytit	L	L	L
Abbassiyeeh Sour	ML	ML	ML	Abou Chech	L	L	L	Ain Abou Abdallah	ML	ML	ML
Ain Baal	ML	ML	ML	Arzoun	VL	VL	VL	Aziyeh	ML	ML	ML
Baflaya	L	L	L	Barich	L	L	L	Batouliyeh	M	M	M
Bayad	L	L	L	Bazouriyeh	ML	ML	ML	Bediass	L	L	L
Bestiyat	VL	VL	VL	Borj El Chemali	ML	ML	ML	Borj En-Naqoura	L	L	L
Borj Rahhal	L	L	L	Boustane	VL	VL	VL	Btaychiyeh	VL	VL	VL
Chaaitiye	L	L	L	Chameh	L	L	L	Chehabiye	VL	VL	VL
Chehour	VL	VL	VL	Chihine	L	L	L	Debaal Sour	L	L	L
Deir Amess	L	L	L	Deir Kifa	VL	VL	VL	Deir Qanoun El-Ain	M	M	M
Deir Qanoun El-Naher	ML	ML	ML	Derdghaiya	VL	VL	VL	Dhayra	VL	VL	VL
Halloussiyeh	L	L	L	Hamoul	L	L	L	Hanaouey	L	L	L
Henniye	ML	ML	ML	Hmairi Sour	VL	VL	VL	Iskandarouna Sour	ML	ML	ML
Jbal El Botom	L	L	L	Jebbin	L	L	L	Jennata	L	L	L
Jijim	VL	VL	VL	Jouaiya	L	L	L	Kneisset Sour	L	L	L

Maarake	L	L	L	Maaroub	L	L	L	Majadel	VL	VL	VL
Majdzaloun	L	L	L	Mansouri Sour	ML	ML	ML	Marnba	VL	VL	VL
Marouahine	VL	VL	VL	Mazraat El-Zalloutiy	VL	VL	VL	Mazraat Mechref	L	L	L
Mazraat Tayr Semhat	VL	VL	VL	Mheilib	ML	ML	ML	Neffakhiyeh	VL	VL	VL
Niha Sour	VL	VL	VL	Ouadi Jilo	L	L	L	Qana	L	L	L
Qolaileh Sour	ML	ML	ML	Rechknayan	L	L	L	Rmadiyah	L	L	L
Selha Sour	VL	VL	VL	Siddiqine	L	L	L	Sour	L	L	L
Srifa	VL	VL	VL	Tayr Debbe	ML	ML	ML	Tayr Felsay	L	L	L
Tayr Harfa	L	L	L	Touayri	VL	VL	VL	Toura	L	L	L
Yanouh Sour	L	L	L	Yarine	VL	VL	VL	Zebqine	L	L	L

Saida

Municipality	20-Mar	21-Mar	22-Mar	Municipality	20-Mar	21-Mar	22-Mar	Municipality	20-Mar	21-Mar	22-Mar
Aanqoun	L	L	L	Aaqtanit	L	L	L	Aarab Ej-Jall	L	L	L
Aarab Tabbaya	L	L	L	Abra Saida	L	L	L	Adloun	ML	ML	ML
Adousiyeh	ML	ML	ML	Ain-El-Deleb	ML	ML	ML	Arzai	L	L	L
Babliyah	VL	VL	VL	Barty	L	L	L	Bissariyeh	L	L	L
Bnaafoul	L	L	L	Bqosta	L	L	L	Bramiy --	ML	ML	ML
Daoudiyeh	L	L	L	Dareb El-Sim	L	L	L	Erkay	VL	VL	VL
Ghassanieh	VL	VL	VL	Ghazieh	L	L	L	Hajjeh	VL	VL	VL
Haret Saida	L	L	L	Hartiyeh	L	L	L	Hlaliye Saida	L	L	L
Insariyat	L	L	L	Jazira Saida	ML	ML	ML	Kafar Bit	L	L	L
Kaoutariyet El-Siyad	VL	VL	VL	Kfar Chellal	L	L	L	Kfar Hatta Saida	L	L	L
Kfar Milke Saida	L	L	L	Khartoum	VL	VL	VL	Khaziz	VL	VL	VL
Khirbet Ed-Douair Sa	VL	VL	VL	Khirbet El-Bassal	VL	VL	VL	Khrayeb Saida	ML	ML	ML
Loubieh	L	L	L	Maghdouche	L	L	L	Majdelyoun	L	L	L
Matariyet El-Choumar	L	L	L	Matayriyeh	ML	ML	ML	Mazraat 'Mseileh	L	L	L
Mazraat 'Snaiber	VL	VL	VL	Mazraat Aarab Soukka	L	L	L	Mazraat Deir Taqla	L	L	L
Mazraat El Yahoudiye	M	M	M	Mazraat El-Housseini	L	L	L	Mazraat El-Mhaydaleh	L	L	L
Mazraat El-Ouasta	M	M	M	Mazraat Jamjim	ML	ML	ML	Mazraat Kaoutariyet	L	L	L
Mazraat Kfar Badda	ML	ML	ML	Mazraat Oussamiyat	VL	VL	VL	Mazraat Sari	L	L	L
Mazraat Sinai	VL	VL	VL	Meemariyeh	L	L	L	Merouaniyeh	L	L	L
Miyeh ou Miyeh	L	L	L	Najjariyeh	ML	ML	ML	Qaaqaiyat El-Snaouba	VL	VL	VL
Qnarit	L	L	L	Qraiye Saida	L	L	L	Saida Ed-Dekermane	L	L	L
Saida El-Oustani	L	L	L	Saida El-Qadimeh	VL	VL	VL	Saida Kefraya	ML	ML	ML
Saksakiyeh	L	L	L	Salhieh Saida	L	L	L	Sarafand	L	L	L
Sfenta	L	L	L	Tafahta	VL	VL	VL	Tanbourit	ML	ML	ML
Tebna	VL	VL	VL	Zaghdraiya	ML	ML	ML	Zeita	L	L	L
Zrariyeh	L	L	L								

Jezzine

Municipality	20-Mar	21-Mar	22-Mar	Municipality	20-Mar	21-Mar	22-Mar	Municipality	20-Mar	21-Mar	22-Mar
Ain El-Mir (El Estab)	L	L	L	Anane	L	L	L	Aramta	VL	VL	VL
Ariya	L	L	L	Aychiyeh	VL	VL	VL	Azour	VL	VL	VL
Baba	VL	VL	VL	Bayssour Jezzine	L	L	L	Benoueteh Jezzine	VL	VL	VL
Bhannine	ML	ML	ML	Bisri	VL	VL	VL	Bkassine	VL	VL	VL
Bouslaya	VL	VL	VL	Btedine El-Leqech	VL	VL	VL	Chbail	VL	VL	VL
Choualiq Jezzine	L	L	L	Dahr Ed-Deir	VL	VL	VL	Deir El Qattine	VL	VL	VL

Demachqiyeh	L	L	L	Ghabbatiyeh	VL	VL	VL	Harf Jezzine	L	L	L
Hassaniyeh	L	L	L	Haytouleh	L	L	L	Haytura	VL	VL	VL
Hidab	VL	VL	VL	Homsiyeh	VL	VL	VL	Jabal Toura	VL	VL	VL
Jarmaq	L	L	L	Jensnaya	L	L	L	Jernaya	L	L	L
Jezzine	L	L	L	Karkha	ML	ML	ML	Kfar Falous	L	L	L
Kfar Houna	L	L	L	Kfar Jarrah	L	L	L	Lebaa	L	L	L
Louayzet Jezzine	VL	VL	VL	Machmouche	VL	VL	VL	Mahmoudiyeh Jezzine	L	L	L
Maknounye Jezzine	VL	VL	VL	Maraat Ouazaiyeh	L	L	L	Mazraat Daraya	L	L	L
Mazraat El-Aarqoub	VL	VL	VL	Mazraat El-Mathane	L	L	L	Mazraat El-Rahbane	VL	VL	VL
Mazraat Khallet Khaz	VL	VL	VL	Mazraat Louzid (Loua	VL	VL	VL	Mazraat Qrouh	VL	VL	VL
Mazraat Tamra	L	L	L	Mazraat Zighrine Jez	VL	VL	VL	Mazraat	VL	VL	VL
Mharbiyeh	L	L	L	Midane Jezzine	L	L	L	Mjeydel Jezzine	L	L	L
Mliikh	VL	VL	VL	Mrah El-Hbasse	L	L	L	Ouadi Baanqoudaine	L	L	L
Ouadi El-Laymoun	L	L	L	Ouardiyeh	VL	VL	VL	Qabaa Jezzine	VL	VL	VL
Qatrani	VL	VL	VL	Qaytouleh	VL	VL	VL	Qtaleh Jezzine	M	M	M
Rihane Jezzine	VL	VL	VL	Rimat	L	L	L	Roum	VL	VL	VL
Roummanet	VL	VL	VL	Sabbah	VL	VL	VL	Saydoun	VL	VL	VL
Sfaray	L	L	L	Snaya	VL	VL	VL	Sojoud	VL	VL	VL
Srayri	L	L	L	Taaïd	VL	VL	VL	Wadi Jezzine	VL	VL	VL
Zhalta	VL	VL	VL								

Bekaa

West Bekaa

Municipality	20-Mar	21-Mar	22-Mar	Municipality	20-Mar	21-Mar	22-Mar	Municipality	20-Mar	21-Mar	22-Mar
Aammiq BG	L	L	L	Ain El Tineh BG	L	L	L	Ain Zebdeh	L	L	L
Ana	L	L	L	Aytanit	ML	ML	ML	Baaloul BG	L	L	L
Bab Mareh	L	L	L	Chouberqiye Aammiq	L	L	L	Dakoue	VL	VL	VL
Deir Ain El-Jaouze	L	L	L	Deir Tahniche	L	L	L	Ghaza	L	L	L
Harime El-Soughra	L	L	L	Hoch Harimeh	VL	VL	VL	Jazira BG	VL	VL	VL
Jib Jennine	L	L	L	Kamed-El-Laouz	L	L	L	Kefraya BG	M	M	M
Khiara El Atika	VL	VL	VL	Khiara	L	L	L	Khirbet Qanafar	L	L	L
Lala	L	L	L	Lebbaya BG	L	L	L	Loussa	L	L	L
Machghara	L	L	L	Manara (Hammara) BG	L	L	L	Mansoura BG	L	L	L
Marej BG	L	L	L	Maydoun	L	L	L	Ouaqf BG	VL	VL	VL
Qaraaoun	L	L	L	Qelya	L	L	L	Raouda (Istabel)	L	L	L
Saghbine	L	L	L	Sohmor	L	L	L	Soltan Yacoub el Ara	L	L	L
Souairy	L	L	L	Sultan Yaacoub	L	L	L	Tal Znoub	L	L	L
Yehmor BG	L	L	L	Zilaya	L	L	L				

Zahle

Municipality	20-Mar	21-Mar	22-Mar	Municipality	20-Mar	21-Mar	22-Mar	Municipality	20-Mar	21-Mar	22-Mar
Aanjar (Haouch Mouss	L	L	L	Ablah	L	L	L	Ain Kfarzabad	L	L	L
Ali-El-Nahri	L	L	L	Bar Elias	L	L	L	Bouarej	L	L	L
Cheberqiyet Tabet	L	L	L	Chtaura	VL	VL	VL	Deir El Ghazal	L	L	L
Delhamiyet Zahle	L	L	L	Ferzol	L	L	L	Haouch El-Ghanam	L	L	L
Haouch Es-Siyadeh	L	L	L	Haouch Hala	VL	VL	VL	Haouch Mandara	VL	VL	VL

Haouch Qayssar	L	L	L	Hezerta	L	L	L	Hosh Moussa	L	L	L
Jdita	L	L	L	Kfarzabad	L	L	L	Ksara	L	L	L
Majdel Aanjar	L	L	L	Makssi	L	L	L	Massa	L	L	L
Mazraat Er-Remtaniye	L	L	L	Mrayjat Zahle	L	L	L	Mzaraa Zahle	L	L	L
Nabi Ayla	L	L	L	Nasriyet Rizk	L	L	L	Nasriyet Zahle	VL	VL	VL
Niha Zahle	L	L	L	Ouadi Ed-Deloum	L	L	L	Ouadi El-Arayech	L	L	L
Qaa El Rim	L	L	L	Qab Elias	L	L	L	Qousaya	L	L	L
Rhit	L	L	L	Riyak	L	L	L	Saadnayel	L	L	L
Taal El-Akhdar	L	L	L	Taalbeya	L	L	L	Taanayel	L	L	L
Talamara	L	L	L	Tcheflik Edde Haouch	L	L	L	Tcheflik Qiqano	L	L	L
Terbol Zahle	VL	VL	VL	Touaite Zahle	L	L	L	Zahle Aradi	L	L	L
Zahle El-Berbara	VL	VL	VL	Zahle El-Maallaqa	VL	VL	VL	Zahle El-Midane	VL	VL	VL
Zahle Er-Rassiye	VL	VL	VL	Zahle Haouch El-Ouma	L	L	L	Zahle Haouch El-Ouma	VL	VL	VL
Zahle Haouch Ez-Zara	VL	VL	VL	Zahle Maalaqa Aradi	L	L	L	Zahle Mar Antonios	VL	VL	VL
Zahle Mar Elias	VL	VL	VL	Zahle Mar Gerios	VL	VL	VL	Zahle Saydet En-Naja	VL	VL	VL
Zebdoul	VL	VL	VL								

Rachaiya

Municipality	20-Mar	21-Mar	22-Mar	Municipality	20-Mar	21-Mar	22-Mar	Municipality	20-Mar	21-Mar	22-Mar
Ain Arab Rachaiya	L	L	L	Ain Ata	L	L	L	Ain Harche	L	L	L
Aqabe Rachaya	L	L	L	Ayha	L	L	L	Ayta El Fokhar	L	L	L
Bakifa Rachaya	L	L	L	Bakka	L	L	L	Beit Lahya	L	L	L
Bireh Rachaiya	L	L	L	Daher El Ahmar	L	L	L	Deir El-Achayer	L	L	L
Heloua Rachaiya	L	L	L	Hoch El Qannabeh Rac	L	L	L	Kaoukaba Bou Arab	L	L	L
Kfar Danis	L	L	L	Kfar Mechki	L	L	L	Kfar Qouq	L	L	L
Kherbet Rouha	L	L	L	Majdel Balhiss	L	L	L	Mdoukha	L	L	L
Mhaydseh Rachaiya	L	L	L	Nabi Safa	L	L	L	Rachaiya	L	L	L
Rafid Rachaiya	L	L	L	Selsata (Mazraat Dei	M	M	M	Tannoura	L	L	L
Yanta	L	L	L								

Beyrouth

Beyrouth

Municipality	20-Mar	21-Mar	22-Mar	Municipality	20-Mar	21-Mar	22-Mar	Municipality	20-Mar	21-Mar	22-Mar
Achrafieh	VL	VL	VL	Ain el-Mreisse	VL	VL	VL	Bachoura	VL	VL	VL
Beirut Central Distr	VL	VL	VL	Marfai	VL	VL	VL	Mazraa	VL	VL	VL
Medaouar	VL	VL	VL	Minet el-Hosn	VL	VL	VL	Mwssaitbeh	VL	VL	VL
Ras Beirut	VL	VL	VL	Rmeil	VL	VL	VL	Saifi	VL	VL	VL
Zqaq el-Blat	VL	VL	VL								