

# Lebanon Fire Risk Bulletin



CIVIL DEDEFENCE

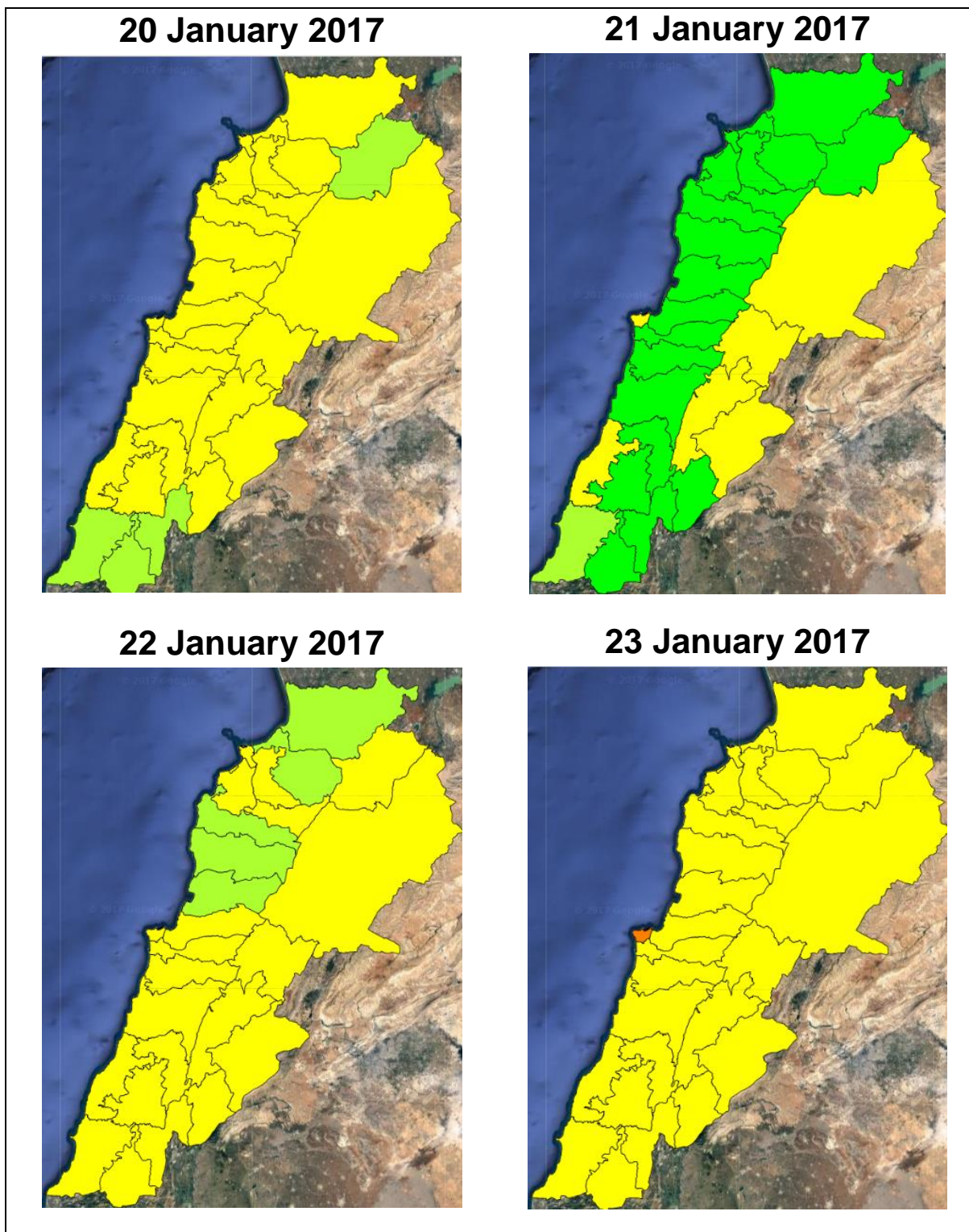
*Refer to cadast condition.*

*General description of potential fire risk situation*

Symbol	Level of risk	Meaning and actions
VL	<b>Very low</b>	Very low fire risk. Controlled burning operations can be hardly executed due to high fuel moisture content. Normally wildfires self-extinguish.
L	<b>Low</b>	Low fire risk. Controlled burning operations can be executed with a reasonable degree of safety.
ML	<b>Medium low</b>	Medium-low fire risk. Controlled burning operations can be executed in safety conditions. All the fires need to be extinguished.
M	<b>Medium</b>	Medium fire risk. Controlled burning operations would be avoided. All the fires need to be very well extinguished.
M	<b>Medium high</b>	Controlled burning is not recommended. Open flame will start fires. Cured grasslands and forest litter will burn readily. Spread is moderate in forests and fast in exposed areas. Patrolling and monitoring is suggested. Fight fires with direct attack and all available resources.
H	<b>High</b>	Ignition can occur easily with fast spread in grass, shrubs and forests. Fires will be very hot with crowning and short to medium spotting. Direct attack on the head may not be possible requiring indirect methods on flanks. Patrolling and monitoring the territory is highly suggested.
E	<b>Extreme</b>	Ignition can occur also from sparks. Fires will be extremely hot with fast rate of spread. Control may not be possible during day due to long range spotting and crowning. Suppression forces should limit efforts to limiting lateral spread. Damage potential total. Patrolling and monitoring the territory is highly suggested.

**Beirut, 21 January 2017**

# FIRE RISK INDEX

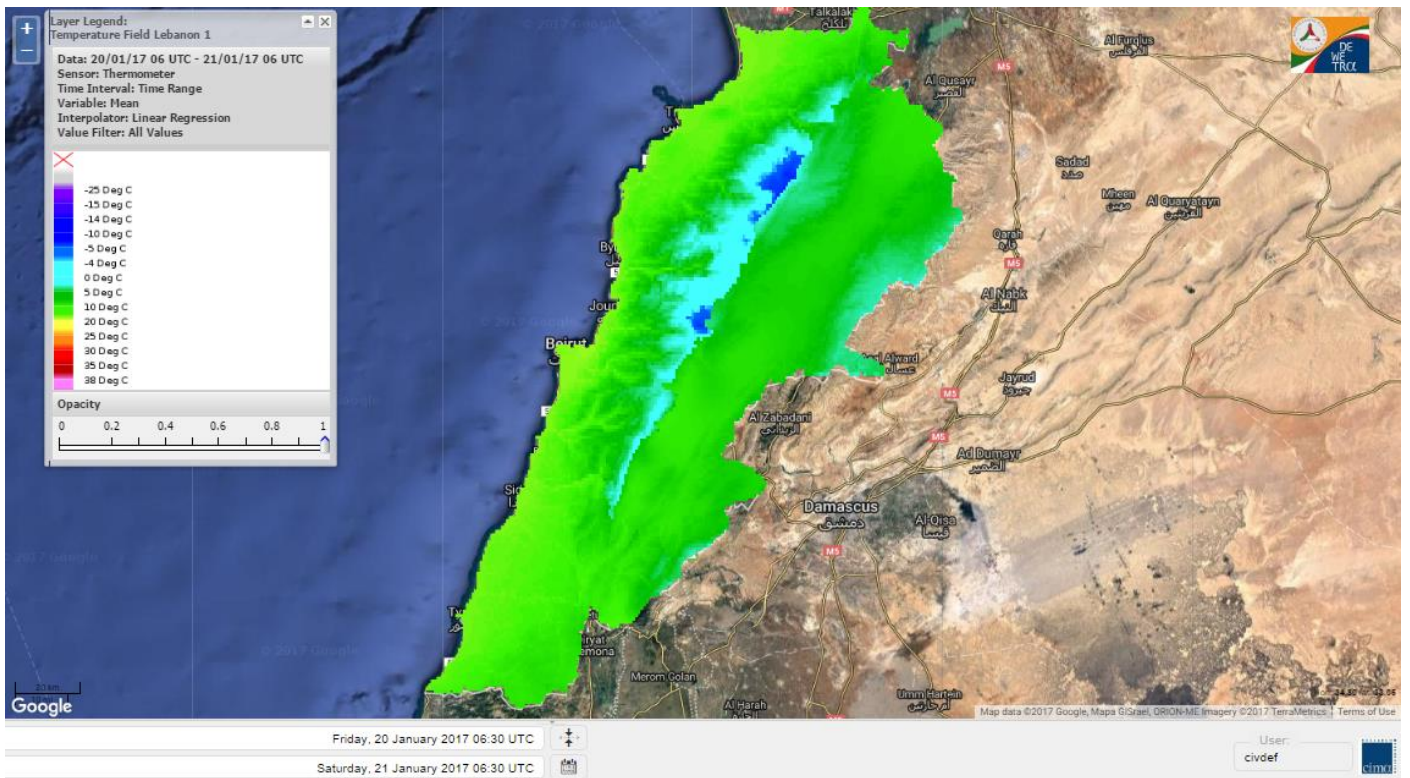


Layer Legend:  
Lebanon Wildfire Risk Index 1

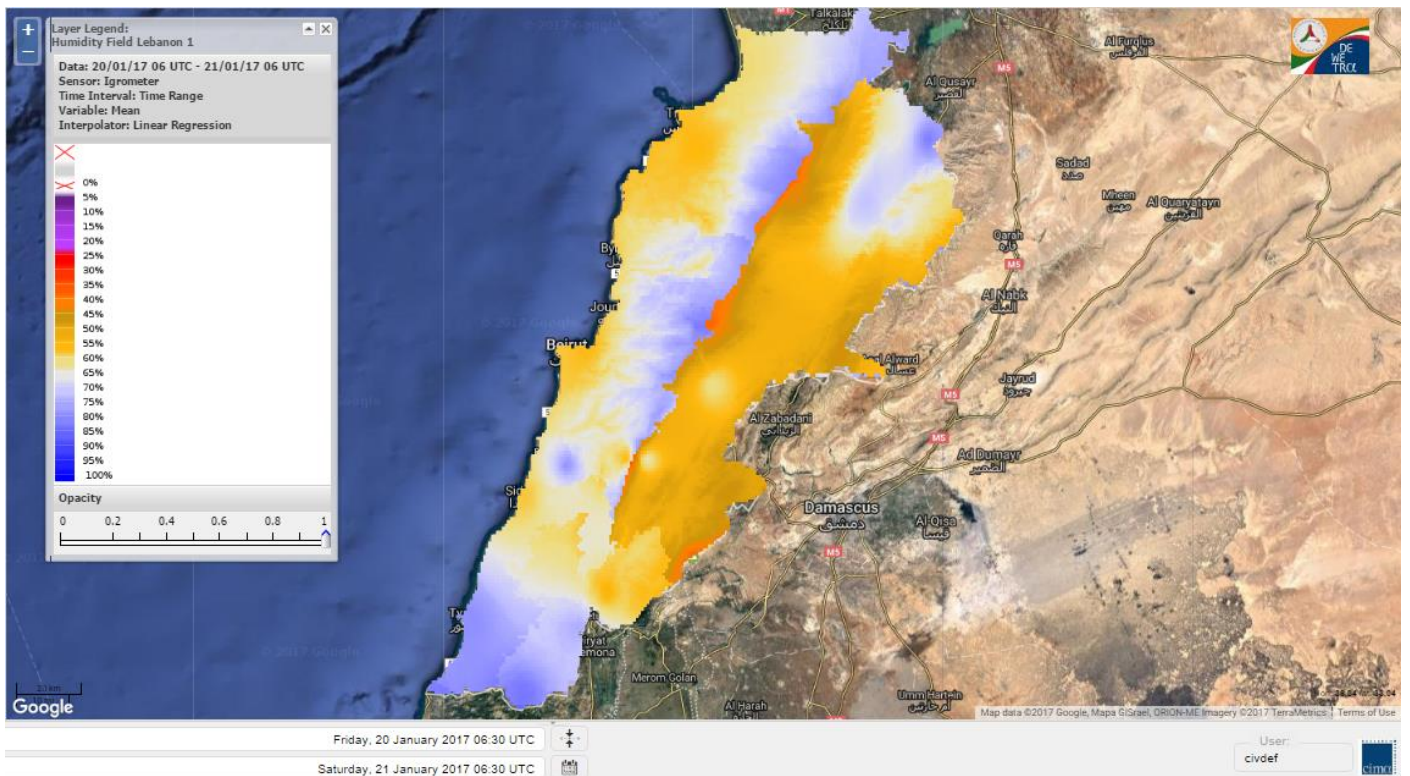
Data: Run: 21/01/2017 00:00. Forecast for 21  
Model: RISICO for the Republic of Lebanon  
Variable: Fire Weather Index  
Spatial Resolution: Caza

- VERY LOW
- LOW
- MEDIUM-LOW
- MEDIUM
- MEDIUM-HIGH
- HIGH
- EXTREME

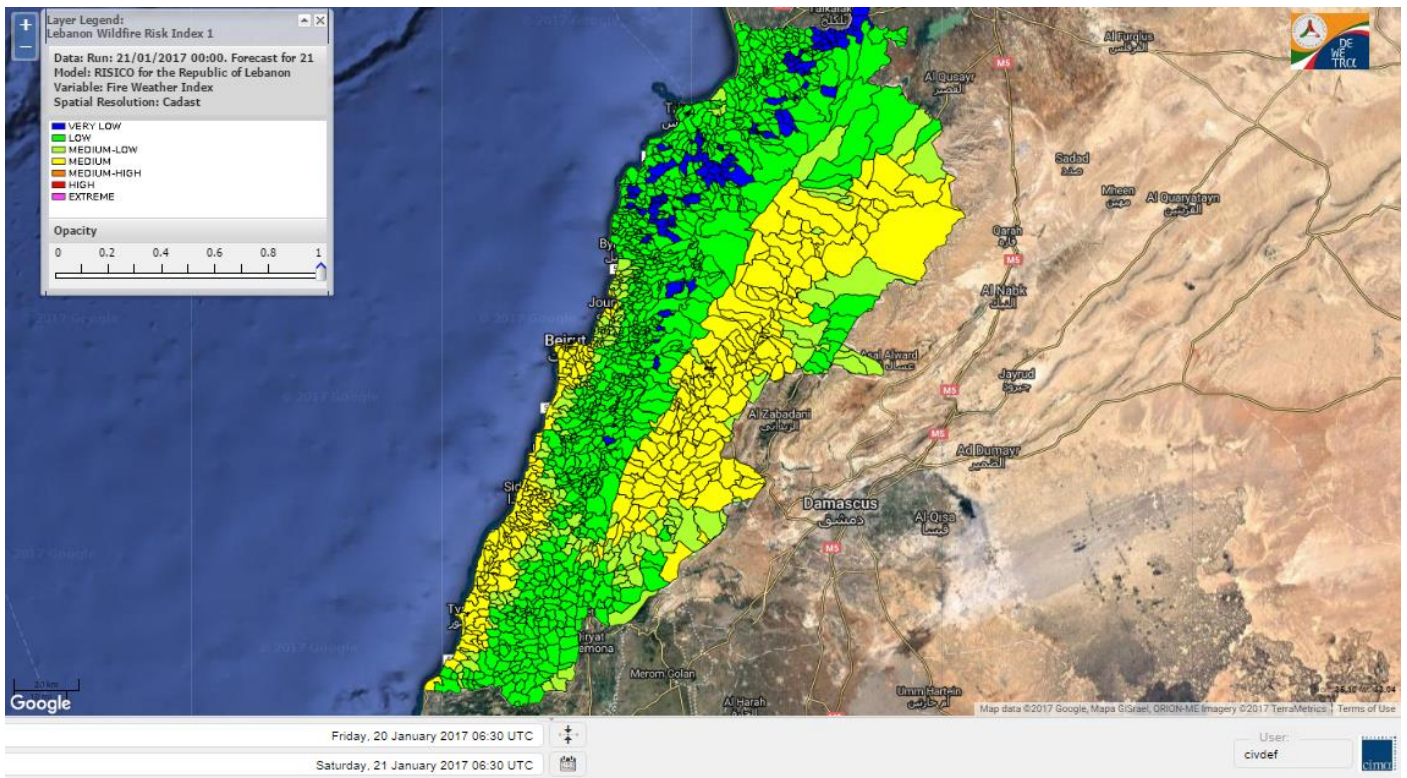
# Lebanon temperature for 21 January 2017



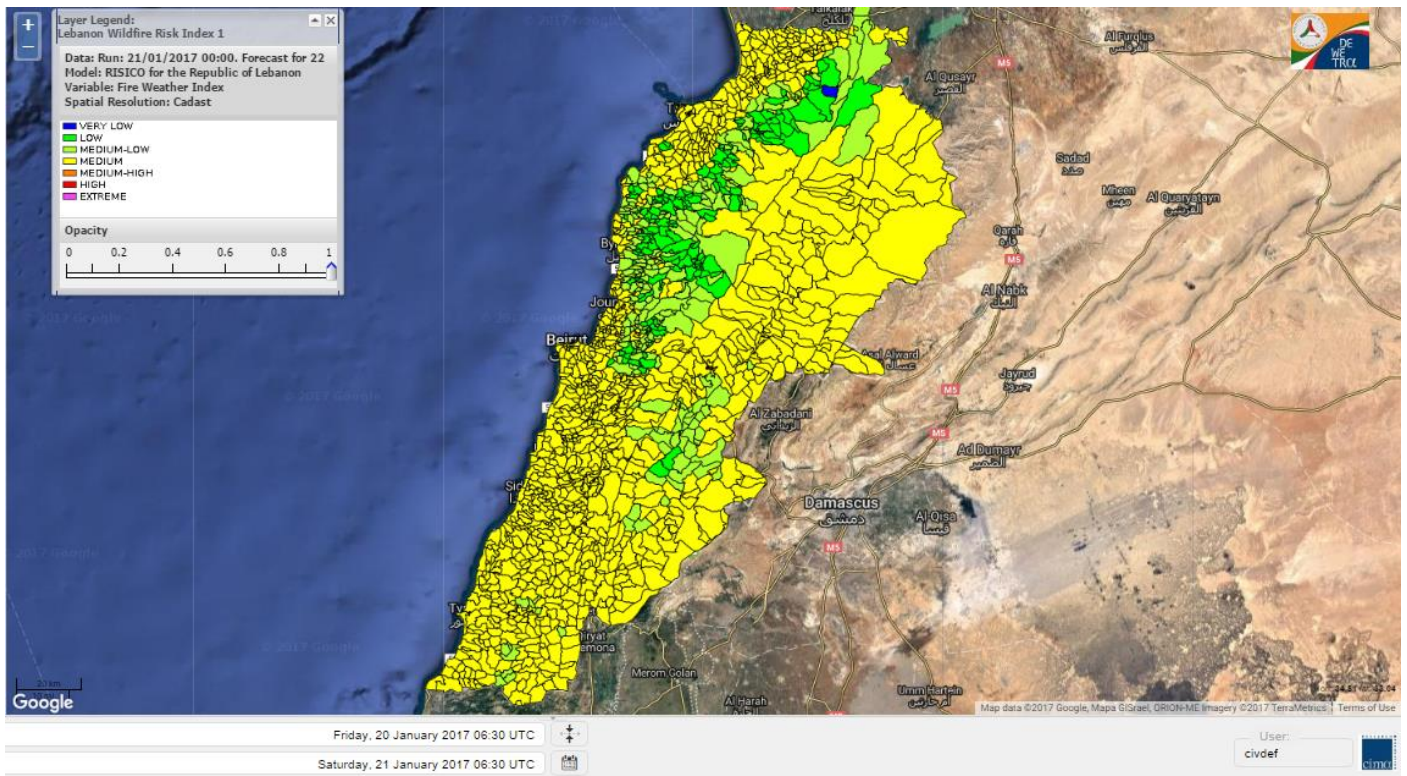
# Lebanon humidity for 21 January 2017



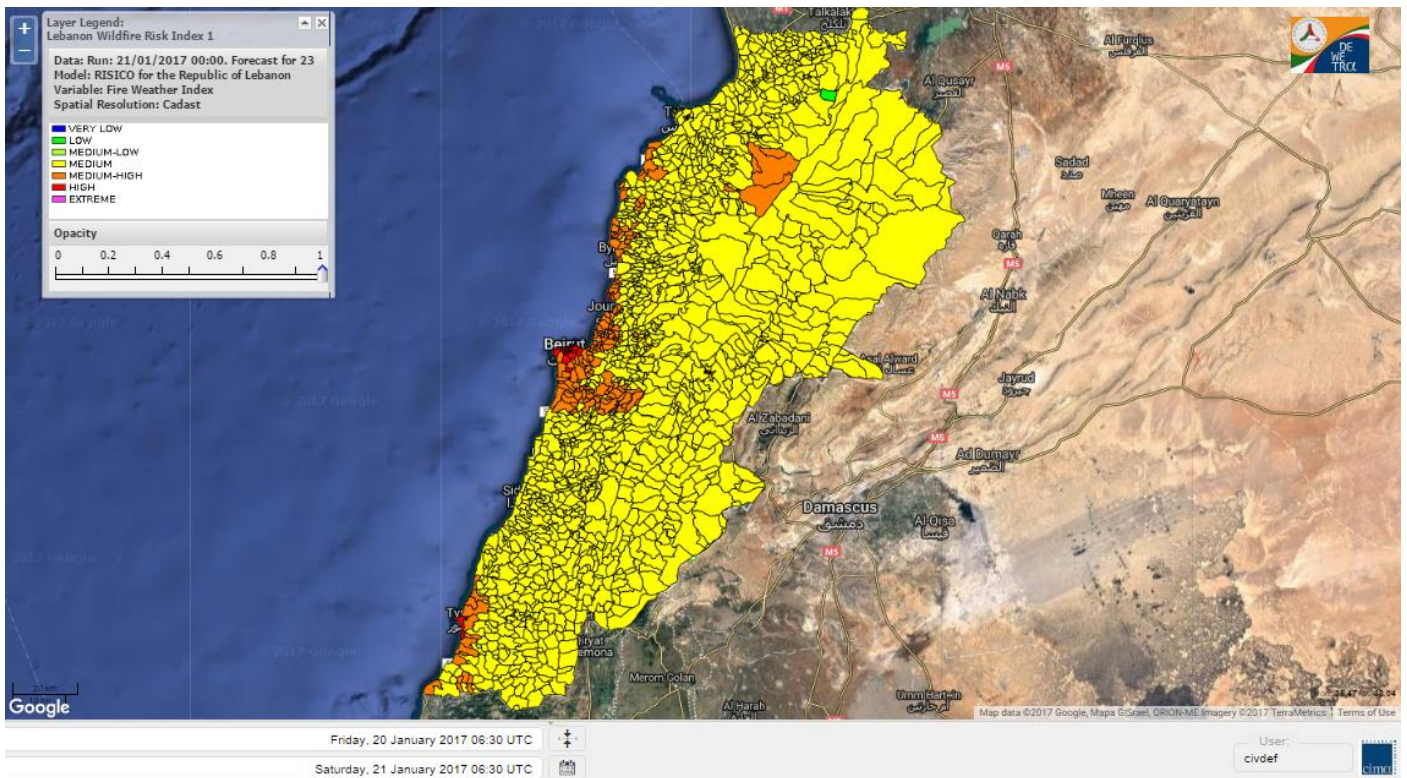
# Lebanon for 21 January 2017



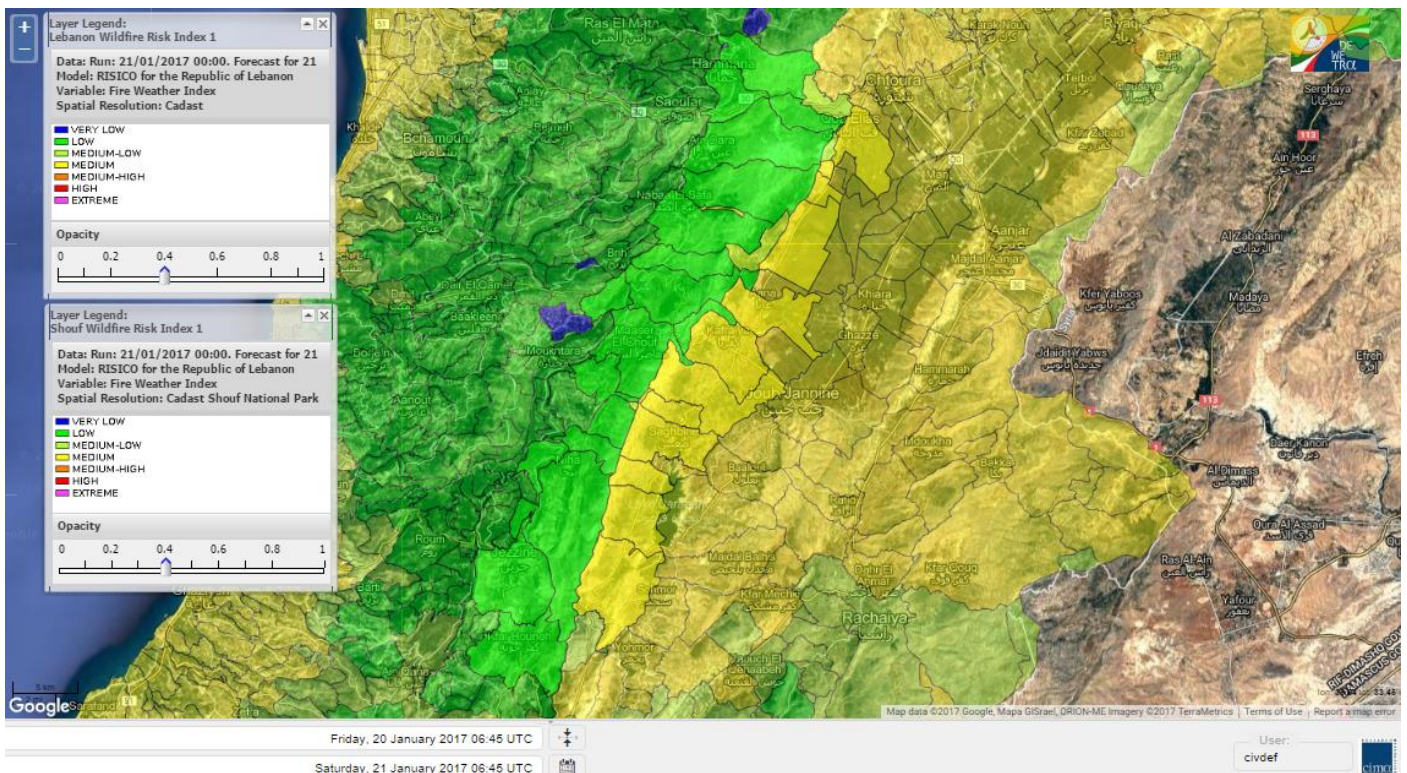
# Lebanon for 22 January 2017



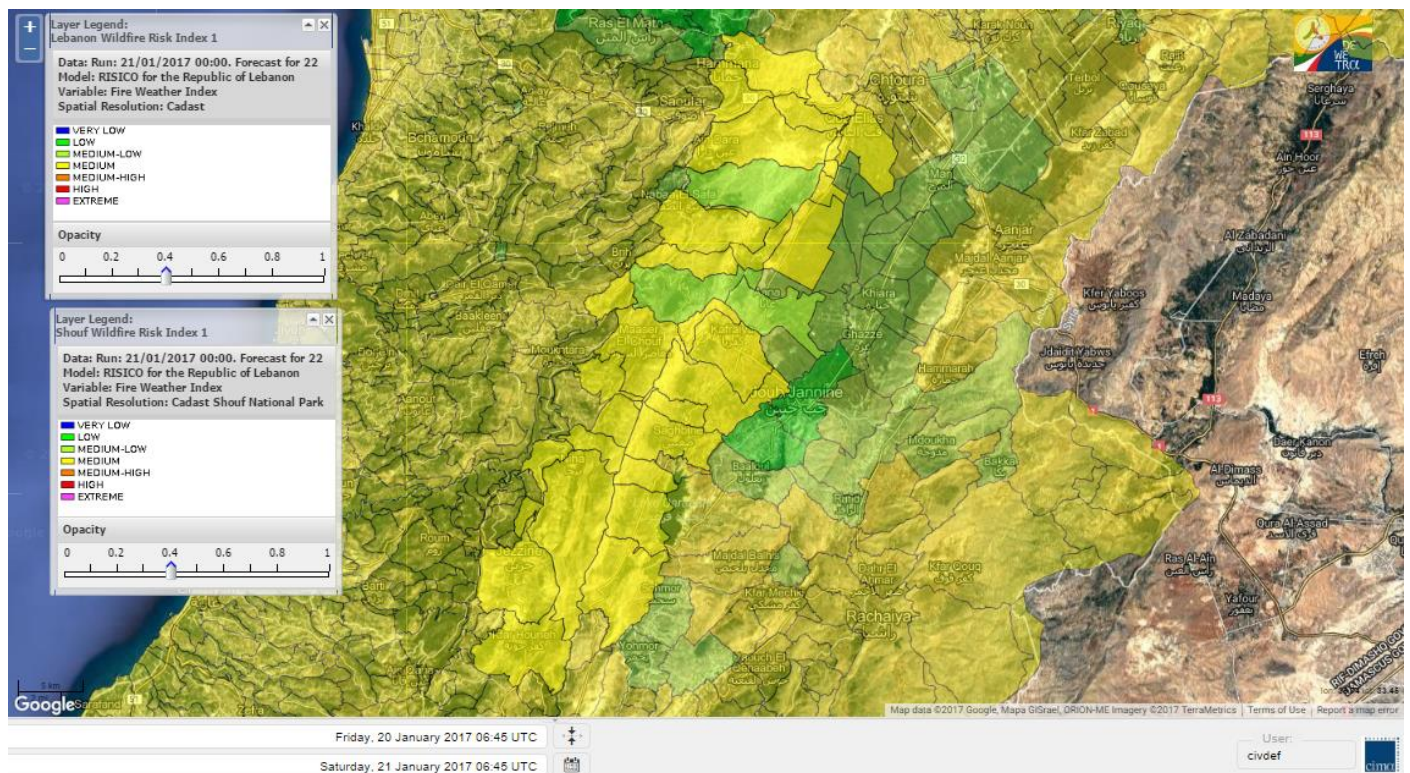
# Lebanon for 23 January 2017



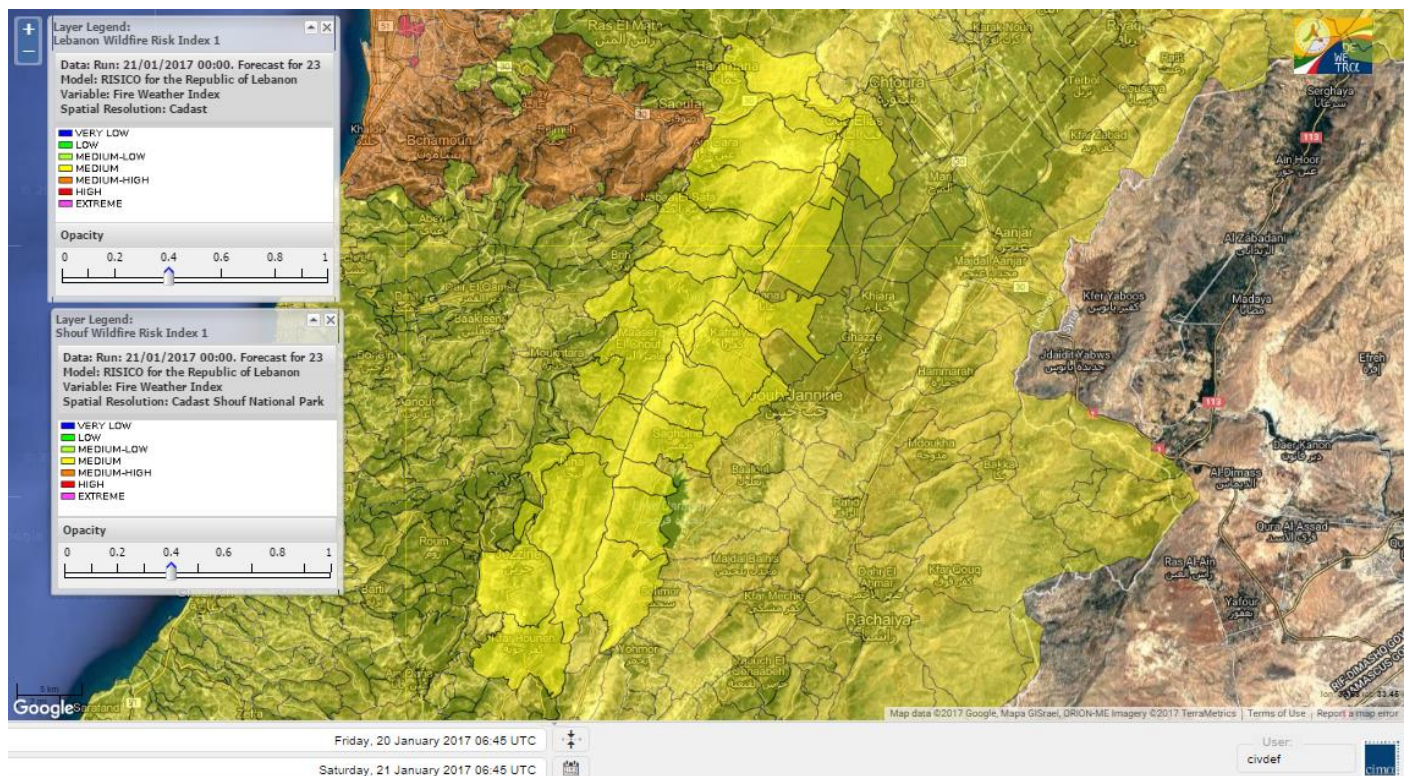
# Shouf Biosphere Reserve Forecast for 21 January 2017



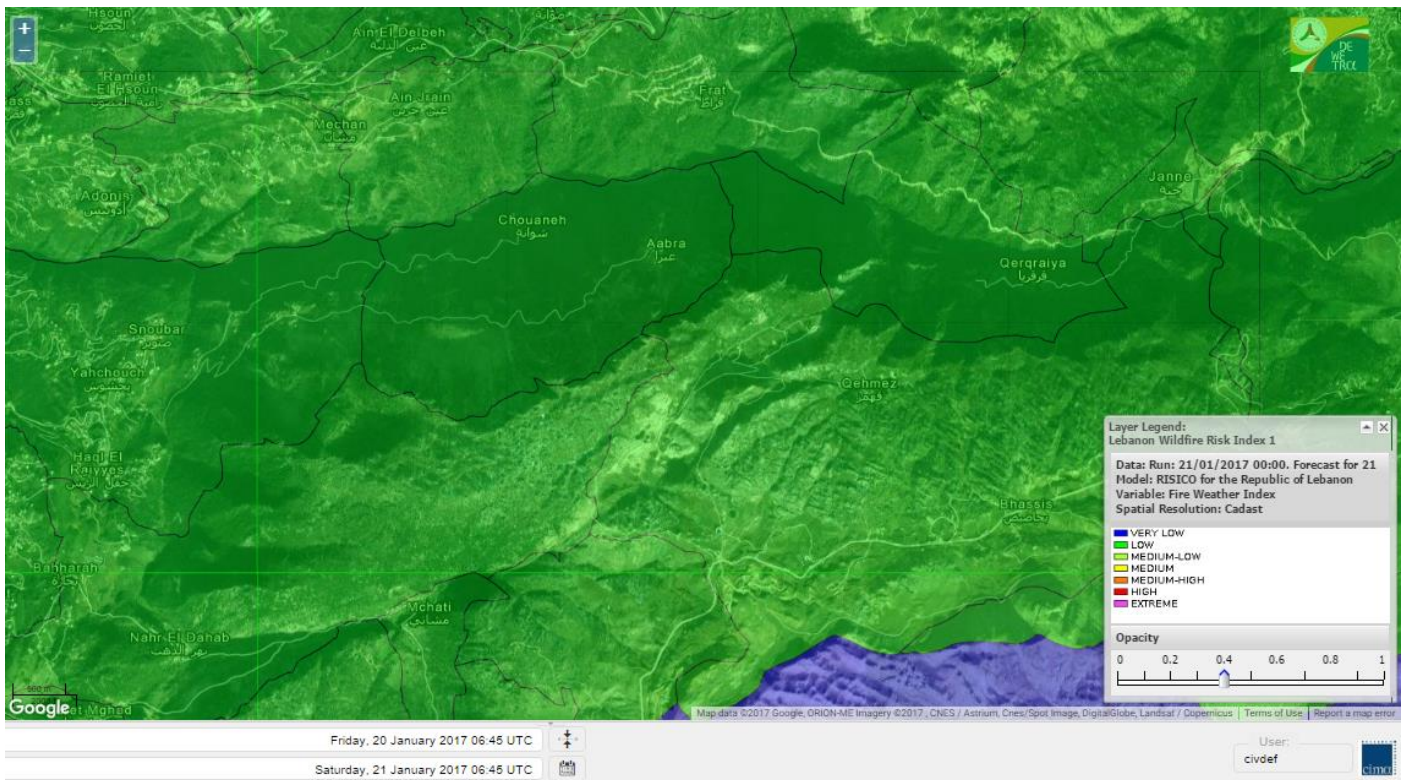
# Shouf Biosphere Reserve Forecast for 22 January 2017



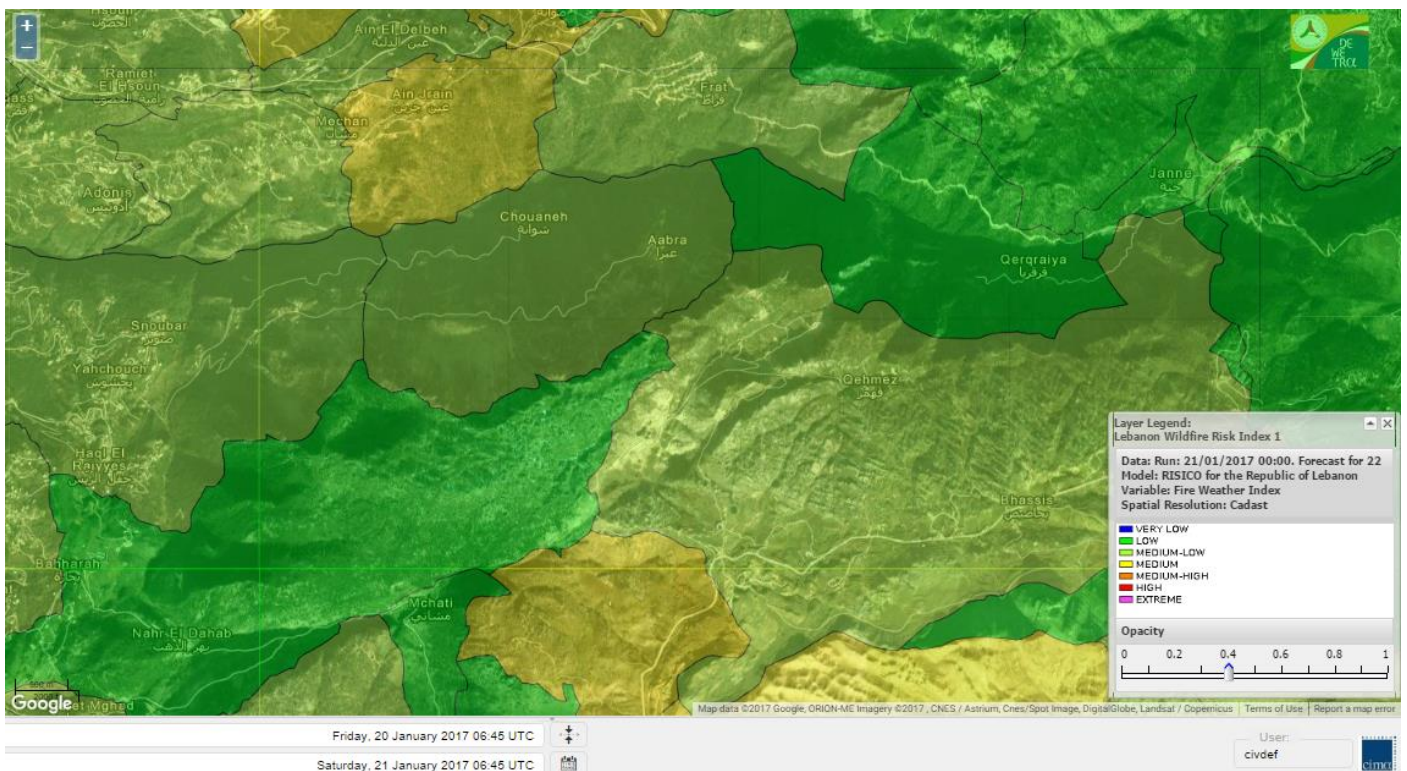
# Shouf Biosphere Reserve Forecast for 23 January 2017



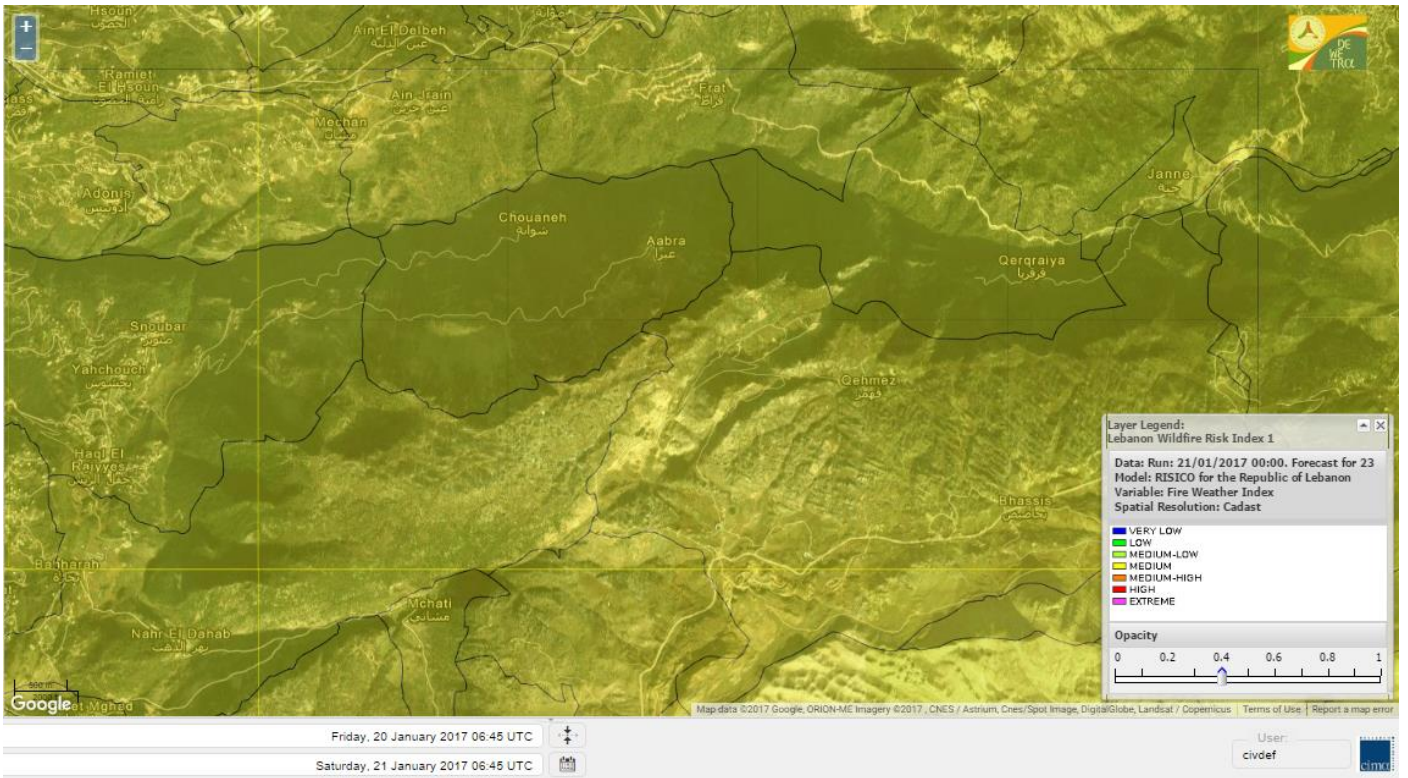
# Jabal Moussa Reserve Forecast for 21 January 2017



# Jabal Moussa Reserve Forecast for 22 January 2017



# Jabal Moussa Reserve Forecast for 23 January 2017





## Nord

### Koura

Municipality	21-Jan	22-Jan	23-Jan	Municipality	21-Jan	22-Jan	23-Jan	Municipality	21-Jan	22-Jan	23-Jan
Aaba	L	M	M	Afsaddiq	L	M	M	Ain Ekrine	L	M	M
Amioun	L	M	M	Anfeh	L	M	MH	Badbhoun	L	M	M
Barghoun	L	M	M	Barsa	L	M	M	Batroumine	L	M	M
Bdebba	L	M	M	Bechmizine	VL	M	M	Bednayel El-Koura	L	ML	M
Bhabbouch El-Koura	L	M	M	Bkeftine	L	M	M	Bnehran	L	ML	M
Bqaiia El-Koura	VL	M	M	Bsarma	VL	M	M	Btaaboura	L	M	M
Bttram	L	M	M	Btouratij	L	M	M	Bziza	L	M	M
Dar Beehtar	L	M	M	Dar Chmezzine	L	M	M	Deddeh	L	M	M
Deir El-Balamand	L	L	M	Fih	L	M	M	Hraiche	L	M	MH
Ijdaabrine	L	ML	M	Kaftoun	L	M	M	Kefraya El-Koura	L	M	MH
Kfarakka	VL	M	M	Kfarhata	VL	ML	M	Kfarhazir	VL	M	MH
Kfarkahel	L	M	M	Kfarsaroun	L	M	M	Kosba	L	M	M
Mejdel el-Koura	L	ML	M	Nakhle	L	M	M	Qalhat	VL	L	M
Ras Masqa	L	M	M	Rechdibbine	L	M	M	Zakroun	L	M	M
Zgharta El-Mtaouile	L	L	M								

### Bcharre

Municipality	21-Jan	22-Jan	23-Jan	Municipality	21-Jan	22-Jan	23-Jan	Municipality	21-Jan	22-Jan	23-Jan
Aabdine	L	ML	M	Bane	L	ML	MH	Barhelioun	L	ML	M
Bazouone	L	L	M	Becharre	L	M	MH	Beit Menzer	L	ML	M
Billa	L	ML	M	Blaouza	L	ML	M	Bqaa Kafra	L	ML	M
Bqerqacha	L	ML	M	Breissat	L	ML	M	Dimane	L	ML	M
Hadath El Jobbeh	L	ML	M	Hadchit	L	L	M	Hasroun	L	L	M
Mazraat Aassaf	VL	L	M	Mazraat Bani Saab	L	ML	M	Mchaa El-Jobbeh	L	M	M
Metrit	L	ML	M	Moghr El-Ahoual	L	ML	M	Ouadi Qannoubine	L	L	M
Qanat	L	ML	M	Qnayer	L	L	M	Tourza	VL	ML	M

### Batroun

Municipality	21-Jan	22-Jan	23-Jan	Municipality	21-Jan	22-Jan	23-Jan	Municipality	21-Jan	22-Jan	23-Jan
Aabrine	VL	L	M	Aalali	L	ML	M	Aartiz	VL	L	M
Abdelli	VL	L	M	Ajdabra	VL	L	M	Assia	L	L	M
Basbina	L	M	MH	Batroun	L	M	MH	Bcheleh	L	ML	M
Bechtoudar	L	L	M	Beit Chlala	L	L	M	Beit Kassab	VL	L	M
Bijdarfil	L	M	MH	Bqesmaya	L	L	M	Chatine	L	ML	M
Chebtin	VL	L	M	Chekka	L	M	MH	Daael	L	L	M
Dahr Abi Yaghi	L	L	M	Daraya El-Batroun	L	M	M	Deir Billa	L	L	M
Deir Kfifane	L	ML	M	Deir Mar Youhanna EL	L	L	M	Deir Mar Youssef Jra	L	L	M
Douma	L	ML	M	Douq	VL	L	M	Eddeh El-Batroun	L	ML	M
Ftahat El-Batroun	VL	L	M	Ghouma	L	ML	M	Hadtoun	VL	ML	M
Hamat	L	ML	M	Harbouna	VL	L	M	Hardine	VL	L	M
Helta	VL	L	M	Hery	L	M	MH	Jebbla	VL	L	M
Jrabta El-Batroun	L	ML	M	Jrane El-Batroun	L	M	MH	Kfar Aabida	L	ML	M
Kfar Halda	VL	L	M	Kfarb Shlaimane	VL	L	M	Kfarhatna	VL	L	M
Kfarhay	L	M	M	Kfarhelos	VL	L	M	Kfifane	L	M	MH

Kfour El Arabi	L	ML	M	Koubba	L	M	MH	Kour	L	ML	M
Mar Mama	VL	L	M	Masrah	VL	L	M	Mehmarch	L	ML	M
Mrah Chdid	VL	ML	M	Mrah El Ziyat	VL	ML	M	Mrah El-Hajj	VL	L	M
Nahle El-Batroun	VL	ML	M	Niha El-Batroun	L	ML	M	Ouajh El-Hajjar	L	ML	M
Ouata Houb	L	L	M	Qatnaaoun	L	ML	M	Racha	L	ML	M
Rachana	L	ML	M	Rachkida	L	ML	M	Ram El-Batroun	VL	L	M
Ras Nahhach	L	ML	M	Selaata	L	M	MH	Sghar	L	ML	M
Smar Jbayl	VL	ML	M	Sourat El-Batroun	VL	L	M	Tannourine El-Faouqa	L	M	M
Tannourine Et-Tahta	L	L	M	Thoum	L	ML	M	Toula El-Batroun	L	L	M
Zan	VL	ML	M								

## Zgharta

Municipality	21-Jan	22-Jan	23-Jan	Municipality	21-Jan	22-Jan	23-Jan	Municipality	21-Jan	22-Jan	23-Jan
Aachach	L	M	M	Aalma	L	M	M	Aarde	L	M	M
Aintourine	VL	M	M	Arabet Qozhaya	VL	L	M	Arde	L	M	M
Arjis	VL	M	M	Asnoun	L	M	M	Ayto	VL	L	M
Basloukit	L	M	M	Bchannine	L	M	M	Besebeel	VL	M	M
Bhairret Toula	L	L	M	Bnachee	VL	M	M	Boussit	ML	M	M
Danha	L	M	M	Daraiya Zgharta	VL	M	M	Deir Jdeide	L	M	M
Ehden	VL	ML	M	Halan	L	M	M	Hariq Zgharta	L	M	M
Houakir	L	ML	M	Hraiqis	L	M	M	laal	L	M	M
Ijbaa	VL	ML	M	Karm Saddeh	VL	L	M	Kfarchakhna	L	M	M
Kfardlaqous	L	M	M	Kfarfou	L	M	M	Kfarhata Zgharta	L	M	M
Kfarhoura	VL	M	M	Kfarsghab	L	ML	M	Kfaryachit	L	M	M
Kfarzaina	VL	M	M	Khaldiye	L	M	M	Mazraat Ajbeaa	VL	M	M
Mazraat Et-Teffah	VL	L	M	Mazraat Jneid	VL	M	M	Mejdlaiya Zgharta	L	M	M
Merh Kfarsghab	L	M	M	Miryata	L	M	M	Miziara	L	L	M
Mzraat Kefraya	L	M	M	Qorah Bach	L	M	M	Rachiine	L	M	M
Ras Kifa	L	M	M	Sakhra	L	M	M	Sebhel Zgharta	VL	M	M
Serhel	VL	L	M	Tallet Zgharta	L	M	M	Toula Zgharta	VL	L	M
Zgharta	L	M	M								

## Minieh-Denniye

Municipality	21-Jan	22-Jan	23-Jan	Municipality	21-Jan	22-Jan	23-Jan	Municipality	21-Jan	22-Jan	23-Jan
Aasaymout	VL	L	M	Aaymar	L	ML	M	Aazki	L	M	M
Ain El-Tineh-Miniyeh	VL	L	M	Assoun	L	ML	M	Bakhaaoun	L	ML	M
Bchennata	L	M	M	Bechehhara	VL	L	M	Beddawi	L	M	M
Behouaita	VL	L	M	Beit El Foqss	L	L	M	Beit Haouik	L	ML	M
Beit Zoud	L	L	M	Bekaasafrine	L	M	MH	Borj El Yahoudiyeh	L	M	M
Bqarsouna	L	L	M	Btermaz	L	L	M	Debaael	L	L	M
Deir Ammar	L	M	M	Deir Nbouh	L	ML	M	Haouaret-Miniyeh	L	L	M
Haql el Azimeh	L	L	M	Harf El Siyad	L	L	M	Hazmiye-Miniyeh	VL	L	M
Izal	L	ML	M	Jarjour	VL	L	M	Jayroun	VL	L	M
Kahf El-Malloul	L	L	M	Karm El-Moher	L	ML	M	Kfar Binine	L	L	M
Kfarchalane	L	ML	M	Kfarhabou	L	M	M	Kharroub-Miniyeh	L	M	M
Mazraat El-Kreme	L	L	M	Mazraat Ketrane	L	L	M	Merkebta	L	M	M
Minyeh	ML	M	M	Mrah El Sfirat	VL	L	M	Mrah Sraj	L	L	M
Mrebbine	L	L	M	Nabi Youcheaa	L	M	M	Nemrine	L	L	M

Qarhaiya	L	ML	M	Qarne	VL	L	M	Qarsita	VL	L	M
Qattineh-Miniyeh	VL	L	M	Qemmamine	VL	L	M	Qraine	L	L	M
Raouda-Aadoua	L	M	M	Rihaniyet-Miniyeh	L	M	M	Sfireh	L	L	M
Sir Ed-Danniyeh	L	L	M	Tarane	VL	L	M	Terbol-Miniyeh	ML	M	M
Zaghartaghriane	L	ML	M	Zouq Bhannine	L	M	M				

## Nabatiye

### Nabatiye

Municipality	21-Jan	22-Jan	23-Jan	Municipality	21-Jan	22-Jan	23-Jan	Municipality	21-Jan	22-Jan	23-Jan
Aabba	L	M	M	Aazzi	ML	M	M	Adchit El-Chqif	L	M	M
Ain Bou Swar	ML	M	M	Ain Kana	ML	M	M	Ali El-TaHER	L	M	M
Ansar	M	M	M	Arab Salim	ML	M	M	Arnoun	L	M	M
Bfaroue	ML	M	M	Breyqaah	L	M	M	Charqiyeh	ML	M	M
Choukine	L	M	M	Deir El Zahrani	L	M	M	Doueir El-Nabatiyeh	L	M	M
Habbouch El-Nabatiye	L	M	M	Hamra El-Nabatiyeh	L	M	M	Harouf El-Nabatiyeh	L	M	M
Hmaile	L	M	M	Houmin El Faouqa	L	M	M	Houmin El Tahta	M	M	M
Jarjough	ML	M	M	Jbaah El-Nabatiyeh	ML	M	M	Jebchit	L	M	M
Kfar Djal El-Nabatiy	L	M	M	Kfar Remmane	L	M	M	Kfar Sir	L	M	M
Kfar Tebnit	L	M	M	Kfarfila	L	M	M	Kfour El-Nabatieh	L	M	M
Mayfadoun	L	M	M	Mazraat Bsaffour	L	M	M	Mazraat Chalbaal	L	M	M
Mazraat Dmoul	ML	M	M	Mazraat El Khreibeh	ML	M	M	Mazraat El-Bayad El-	L	M	M
Mazraat Kfarjaouz	L	M	M	Mazraat Qalaat Meiss	ML	M	M	Nabatiyeh El-Fawka	L	M	M
Nabatiyeh Et-Tahta	L	M	M	Namiriyyeh	ML	M	M	Qaaqaaiyet El Jisr	L	M	M
Qossaibeh El-Nabatiy	L	M	M	Roumine	ML	M	M	Sarba El-Nabatieh	ML	M	M
Sir El-Gharbiyeh	ML	M	M	Toul	L	M	M	Yehmor El-Nabatiyeh	L	M	M
Zaoutar El Charkiyeh	L	M	M	Zaoutar El-Gharbiyeh	L	M	M	Zebdine El-Nabatiyeh	L	M	M
Zefta	ML	M	M								

### Hasbaiya

Municipality	21-Jan	22-Jan	23-Jan	Municipality	21-Jan	22-Jan	23-Jan	Municipality	21-Jan	22-Jan	23-Jan
Ain Jarfa	ML	M	M	Abou Qamha	L	M	M	Ain Qania	M	M	M
Bourghos	ML	M	M	Chebaa	L	M	M	Chouaya Hasbaya	L	M	M
Dellafeh	ML	M	M	Fardiss Hasbaiya	ML	M	M	Hasbaya	ML	M	M
Hbariyeh	ML	M	M	Kaoukaba Hasbaiya	ML	M	M	Kfar Chouba	L	M	M
Kfar Hamam	ML	M	M	Kfeir El-Zait	ML	M	M	Khalwat Hasbaya	L	M	M
Khreibet Hasbaiya	L	M	M	Majidiyeh Hasbaiya	L	M	M	Marj Ez-Zhour (Haouc	M	M	M
Meri	L	M	M	Mimass	ML	M	M	Rachaiya El-Fokhar	ML	M	M
Salaiyeb	L	M	M								

### Marjayoun

Municipality	21-Jan	22-Jan	23-Jan	Municipality	21-Jan	22-Jan	23-Jan	Municipality	21-Jan	22-Jan	23-Jan
Aalmane Marjaayoun	L	M	M	Aamra	L	M	M	Adayseh Marjaayoun	L	M	M
Adchit El-Koussair	L	M	M	Ain Arab Marjaayoun	L	M	M	Bani Haiyann	VL	M	M
Blatt Marjaayoun	L	M	M	Blida	ML	M	M	Borj El-Moulouk	L	M	M
Boueyda Marjaayoun	L	M	M	Deir Mimass	L	M	M	Deir Siriane	L	M	M
Dibbine	L	M	M	Ebel El Saqi	L	M	M	Houla	L	M	M
Houra	L	M	M	Kfar Kila	L	M	M	Khiam Marjaayoun	L	M	M

Klayaa	L	M	M	Majdel Selem	L	M	M	Marjaayoun	L	M	M
Markaba	L	M	M	Mays El-Jabal	L	M	M	Mazraat Doumiat	L	M	M
Mazraat Sarada	L	M	M	Mhaibib	L	M	M	Qabrikha	L	M	M
Qantara	L	M	M	Rab El-Thalathine	L	M	M	Saouaneh Marjayoun	L	M	M
Talloussa	VL	ML	M	Taybeh Matjaayoun	L	M	M	Touline	L	M	M

## Bent Jbail

Municipality	21-Jan	22-Jan	23-Jan	Municipality	21-Jan	22-Jan	23-Jan	Municipality	21-Jan	22-Jan	23-Jan
Ain-Ebel	L	M	M	Aitaroun	ML	M	M	Aynata Bint Jbeil	L	M	M
Ayta El-Chaeb	L	M	M	Ayta El-Jabal	L	M	M	Beit Lif	L	ML	M
Beit Yahoun	L	M	M	Bint Jbeil	L	M	M	Borj Qalaway	L	M	M
Braachit	L	M	M	Chakra	L	M	M	Debel	L	M	M
Deir Antar	L	M	M	Froun	L	M	M	Ghandouriyeh Bint Jb	L	M	M
Hanine	L	M	M	Hariss	L	M	M	Hdatha	L	M	M
Jmeyjmech	L	M	M	Kafra Bint Jbeil	L	ML	M	Kfar Dounine	L	M	M
Khirbet Selm	L	M	M	Kounine	L	M	M	Maroun El Ras	ML	M	M
Qalaway	L	M	M	Qaouzah	L	ML	M	Qatmoun	L	M	M
Ramya Bint Jbeil	L	ML	M	Rchaf	L	M	M	Rmeich	L	M	M
Safad Al Battikh	L	M	M	Salhaneh	L	ML	M	Serbine	L	M	M
Sultanieh Bint Jbeil	L	M	M	Tibnine	L	M	M	Tiri	L	M	M
Yaroun	L	M	M	Yater	L	M	M				

## Mont Liban

### Jbail

Municipality	21-Jan	22-Jan	23-Jan	Municipality	21-Jan	22-Jan	23-Jan	Municipality	21-Jan	22-Jan	23-Jan
Aabeydat	L	L	M	Aalita	L	L	M	Aamchit	L	M	MH
Aarab El-Lahib	L	ML	M	Aarasta	L	L	M	Adonis Jbeil	L	ML	M
Afqa Jbeil	L	L	M	Ain El Delbeh Jbeil	L	ML	M	Ain El-Ghouyba	L	L	M
Ain Jrain	L	M	M	Ain Kfah	L	M	MH	Almat El Chemaliyat	L	ML	M
Almat El-Jenoubiya	L	L	M	Aqoura	L	ML	M	Bayzoun	L	M	M
Bchille Jbeil	L	ML	M	Bechtida	L	L	M	Behdaydat	L	ML	M
Beit Habbaq	L	ML	M	Bejjeh	L	ML	M	Bekhaaz	L	ML	M
Berbara Jbeil	L	M	MH	Bintael	L	ML	M	Birket Hjoula	VL	L	M
Blatt Jbeil	L	ML	M	Boulhos	L	L	M	Breyj Jbeil	L	L	M
Chamat	L	M	MH	Chikhane	L	M	MH	Chmout	L	L	M
Eddeh Jbeil	L	M	MH	Ehmej	L	L	M	Fatre	L	ML	M
Ferhet	L	M	M	Fghal	L	ML	M	Frat	L	ML	M
Ghabat	L	L	M	Ghalboun	L	ML	M	Gharzouz	L	M	MH
Ghofrine	L	ML	M	Habil	VL	L	M	Halate	ML	ML	M
Haqel	L	L	M	Hbaline	L	ML	MH	Hboub	L	ML	M
Hdeine	L	L	M	Hema Er-Rehban	L	ML	M	Hema Mar Maroun Aann	VL	L	M
Hjoula	L	L	M	Hosrayel	L	M	MH	Hsarat	L	ML	M
Hsoun	L	ML	M	Jaj	L	ML	M	Janne	L	L	M
Jbeil	L	M	MH	Jeddeyel Jbeil	L	M	MH	Jlisse	L	L	M
Jouret El-Qattine	L	ML	M	Kfar Baal Annaya	L	ML	M	Kfar Kidde	L	ML	M
Kfar Kouas	L	L	M	Kfar Mashoun	L	M	MH	Kfoun	L	L	M

Kharbe Jbeil	L	ML	M	Laqlouq	VL	L	M	Lassa	L	L	M
Lehfed	VL	L	M	Maad	L	ML	M	Mar Sarkis	L	L	M
Mastita	L	M	MH	Mayfouq	VL	L	M	Mazraat El Siyad	VL	L	M
Mazraat El-Maaden	L	L	M	Mechane	L	ML	M	Mechmech Jbeil	L	L	M
Mehrin	L	M	MH	Mejdel El-Akoura	L	L	M	Mghayreh Jbeil	L	L	M
Mounsef	L	M	MH	Nahr Ibrahim	M	M	MH	Qahmez	L	ML	M
Qartaba	L	L	M	Qartaboun	L	M	MH	Qattara Jbeil	VL	L	M
Qorqraya	L	L	M	Ramout	L	ML	M	Ras Osta	L	L	M
Rihane Jbeil	L	M	MH	Sakiet El-Khayt	L	ML	M	Saqi Richmaya	VL	L	M
Sebrine	L	L	M	Seraita	L	L	M	Souane Jbeil	L	M	M
Tadmor	VL	L	M	Tartej	L	ML	M	Torzaiya	L	ML	M
Yanouh Jbeil	L	L	M	Zibidine Jbeil	L	ML	M				

## El Metn

Municipality	21-Jan	22-Jan	23-Jan	Municipality	21-Jan	22-Jan	23-Jan	Municipality	21-Jan	22-Jan	23-Jan
Aain El-Qabu	VL	L	M	Aain El-Qach	L	M	M	Aain El-Teffaha	L	ML	M
Aain el-Safssaf El-M	L	ML	M	Abou Mizane	L	ML	M	Ain Aar	ML	M	MH
Ain Alaq	L	M	MH	Ain El-Kharroube	L	M	MH	Ain El-Sendiane	L	ML	M
Ain El-Zeitoune	L	L	M	Ain Saadeh	ML	M	MH	Aintoura El-Matn	L	M	M
Amaret Chalhoub	M	M	MH	Antelias	ML	M	MH	Atchaneh	L	M	M
Ayroun	L	M	MH	Baabdat	L	L	M	Baouchariyeh	M	M	MH
Baskinta	L	ML	M	Beit Chabab	L	ML	M	Beit El-Chaar	ML	M	MH
Beit El-Kekko	ML	M	MH	Beit Mery	L	M	M	Bhersaf	L	ML	M
Bikfaya	L	M	M	Biyakout	ML	M	MH	Bnabil	L	L	M
Bourj Hammoud	M	M	MH	Bqennaya	ML	M	MH	Broummana El-Matn	L	M	M
Bsalim	ML	M	MH	Bsifrine	L	ML	M	Bteghrine	L	L	M
Chaouiye	L	M	MH	Chouaya El-Matn	L	ML	M	Choueir	L	ML	M
Chrine	L	L	M	Dahr El Sawan El-Mat	L	ML	M	Daychouniyeh	M	M	MH
Dbayeh	ML	M	MH	Deir Chamra	L	L	M	Deir Mar Abda el Mch	ML	M	MH
Deir Mar Roukouz	M	M	MH	Deir Tamiche	ML	M	MH	Dik El-Mehdi	ML	M	MH
Dikwaneh	M	M	MH	Douar El-Matn	L	ML	M	Fanar	M	M	MH
Fraike	L	M	M	Haret El-Ballaneh	ML	M	MH	Hbous	ML	M	MH
Himlaya	L	ML	M	Jal El Did	M	M	MH	Jdeideh El-Metn	M	M	MH
Jouar El-Matn	L	L	M	Jouret El-Ballout	L	M	M	Kaaqour	L	ML	M
Kfar Aaqab	L	L	M	Kfertay El-Matn	L	ML	M	Khenchara	L	ML	M
Khillet El-Mtain	L	ML	M	Konnabat Broummana	L	M	M	Konnabat Salima	L	L	M
Machraah El-Matn	L	ML	M	Majdel Tarchich	L	M	M	Majzoub	ML	M	MH
Mansouriyeh El-Metn	M	M	MH	Mar Boutros Karm Et-	L	ML	M	Mar Chaya et Mzekke	L	M	M
Mar Moussa Ed-Douar	L	ML	M	Marjaba	L	ML	M	Masqa	L	ML	M
Mayasse	L	ML	M	Mazraat Deir Aoukar	ML	M	MH	Mazraat El-Hadirat	ML	M	MH
Mazraat Yachouh	ML	M	MH	Mchikha	L	M	M	Menqlet Mezher	ML	M	MH
Mhaydseh Matn	L	M	M	Mkalles	M	M	MH	Mrouj	VL	M	M
Mtain	L	M	M	Mtayleb	ML	M	MH	Nabay	ML	M	MH
Naccache	ML	M	MH	Ouadi Chahine	L	ML	M	Ouadi El-Karm El-Mat	L	L	M
Ouata El-Mrouj	L	ML	MH	Ouyoun El-Matn	L	L	M	Qornet Chehwan	ML	M	MH
Qornet El-Hamra	ML	M	MH	Roumieh	L	M	M	Sfeilet Bikfaya	L	ML	M
Sinn El-Fil	M	M	MH	Zabbougha	L	L	M	Zalqa	M	M	MH

Zarouon	L	ML	M	Zekrite	ML	M	MH	Zighrine El-Matn	L	M	MH
Zouk El-Khrab	ML	M	MH								

## Chouf

Municipality	21-Jan	22-Jan	23-Jan	Municipality	21-Jan	22-Jan	23-Jan	Municipality	21-Jan	22-Jan	23-Jan
Aalmane El-Chouf	M	M	M	Aammq El-Chouf	L	M	M	Ain Ouzein	VL	M	M
Ain Qani	L	M	M	Ain Zhalta	L	M	M	Ainbal	L	M	M
Amatour	L	M	M	Anout	L	M	M	Atrine	L	M	M
Baadarane	L	M	M	Baaqline	L	M	M	Baasir	ML	M	M
Barja	ML	M	M	Barouk	L	ML	M	Bater	L	M	M
Batloun	L	M	M	Bayqoun	L	M	M	Bchetfine	L	M	M
Beiteddine	L	M	M	Benouati Ech-Chouf	L	M	M	Berjein	L	M	M
Bireh et Mtalleh	VL	M	M	Biret El-Chouf	VL	M	M	Bkechtine Ouel Mchei	L	M	M
Bkifa El-Chouf	L	M	M	Botme	L	M	M	Bqaiaa Ech-Chouf	L	M	M
Bsaba El-Chouf	L	M	M	Chammis El-Chouf	L	M	M	Chehim	L	M	M
Chemaarine	L	M	M	Chourit	L	M	M	Daher El-Chouf	L	M	M
Dalhoun	L	M	M	Damour	M	M	M	Daraya El-Chouf	L	M	M
Deir El-Moukhalles	L	M	M	Deir Baba	L	M	M	Deir Dourit	L	M	M
Deir El-Qamar	L	M	M	Deir Kouche	L	M	M	Dibbieh	L	M	M
Dmit	ML	M	M	Fouara Jaafar	VL	M	M	Fraidis El-Chouf	L	M	M
Ghabet Jaafar	L	M	M	Gharife	L	M	M	Haret Jandal	VL	M	M
Hasrout	L	M	M	Jadra	M	M	M	Jahlieh	L	M	M
Jbeih El-Chouf	L	M	M	Jdeidet El-Chouf	L	M	M	Jiyeh	M	M	M
Jleilyeh	L	M	M	Jmailiyeh	M	M	M	Joun	ML	M	M
Kahlounie El-Chouf	L	M	M	Ketermaya	L	M	M	Kfar Faqoud	L	M	M
Kfar Hamal	L	M	M	Kfar Him	L	M	M	Kfar Katra	L	M	M
Kfar Niss	L	M	M	Kfar hay	L	M	M	Kfarnabrakh	L	M	M
Khirbet Bisri	L	M	M	Knayse El-Chouf	L	ML	M	Maaniyeh	L	M	M
Maasser Beiteddine	L	M	M	Maasser El-Chouf	L	M	M	Majdalouna	L	M	M
Majdel El-Meouch	L	M	M	Mazboud	L	M	M	Mazmoura	L	M	M
Mazraat El Chouf	L	M	M	Mazraat El Daher	L	M	M	Mazraat El-Douair	L	M	M
Mechref	ML	M	M	Mghairie	ML	M	M	Mghayrie El-Chouf	L	M	M
Moukhtara	L	M	M	Mrusti	L	M	M	Mtolle	L	M	M
Naameh	M	M	M	Niha El-Chouf	L	M	M	Ouadi Abou Youssef	L	M	M
Ouadi Ed-Deir	ML	M	M	Ouadi El-Sit	L	M	M	Ouadi bnehlay	L	M	M
Qraibeh	L	M	M	Qreiaa	L	M	M	Rmayle El-Chouf	M	M	M
Semqaniyeh	L	M	M	Sibline	M	M	M	Sirjbeil	L	M	M
Warhanieh	VL	M	M	Werdaniyeh	M	M	M	Zaarourieh	L	M	M

## Baabda

Municipality	21-Jan	22-Jan	23-Jan	Municipality	21-Jan	22-Jan	23-Jan	Municipality	21-Jan	22-Jan	23-Jan
Abadiyeh	L	M	MH	Ain Mouaffaq	L	M	MH	Araiya	L	M	M
Arbaniyeh	L	L	M	Arsoun	L	L	M	Baabda	M	M	MH
Baalchmey	L	M	MH	Bmaryam	L	M	M	Bourj El-Brajneh	M	M	MH
Boutchay	ML	M	MH	Bsaba Baabda	ML	M	MH	Btekhney	L	L	M
Btibyat	L	ML	M	Bzbeddine	L	ML	M	Chbeniyeh	L	M	M
Chiyah	M	M	MH	Chmeisset Baabda	L	M	M	Chouit	L	M	M
Deir El-harf	L	ML	M	Deir Khouna	L	M	M	Dlaybeh	L	ML	M

Falougha	L	M	M	Furn El-Chebbak	M	M	MH	Hadath Beyrouth	M	M	MH
Halaliyeh Baabda	L	M	M	Hammana	L	M	M	Haret El Sett	ML	M	M
Haret Hamze	L	M	M	Haret Hreik	M	M	MH	Hasbaiya El-Metn	L	L	M
Jouar El-Hoz	VL	ML	M	Jouret Arsoun	L	L	M	Kfar Chima	M	M	MH
Kfar Selouane	L	M	M	Khalouat Baabda	VL	M	MH	Kneisset Baabda	L	L	M
Laylakeh	M	M	MH	Louayzeh Baabda	M	M	MH	Merdache	M	M	MH
Mzairaa Baabda	L	M	M	Ouadi Chahrour El Ol	ML	M	MH	Ouadi Chahrour El So	ML	M	M
Qalaa Baabda	VL	ML	M	Qhraybe Baabda	VL	M	M	Qobbayaa	L	M	M
Qornayel	L	L	M	Qortada	L	L	M	Qrayeh Baabda	L	M	M
Qsaibeh Baabda	L	ML	M	Qtale Baabda	L	M	M	Ras El Metn	L	ML	M
Ras El-Haref	L	M	MH	Rouayset El-Ballout	L	M	M	Salima Baabda	L	ML	M
Tahouitat El Ghadir	M	M	MH	Tarchich	L	M	M	Zandouqa	L	ML	M

## Aley

Municipality	21-Jan	22-Jan	23-Jan	Municipality	21-Jan	22-Jan	23-Jan	Municipality	21-Jan	22-Jan	23-Jan
Abey	L	M	M	Aghmid	VL	ML	M	Ain Dara	L	M	M
Ain Drafil	ML	M	M	Ain El Halazoun	L	M	MH	Ain El-Rmmaneh	L	ML	M
Ain Jedideh	L	M	MH	Ain Ksour	L	M	M	Ain Onoub	L	M	MH
Ain Traz	L	M	M	Ainab	L	M	M	Aley	L	M	MH
Aramoun	ML	M	MH	Aytat	L	M	MH	Azouniyeh	VL	M	MH
Baawerta	ML	M	M	Badghan Oua Wadi Bad	L	M	MH	Bassatine	L	M	MH
Bayssour	L	M	MH	Bchamoun	ML	M	MH	Bdadoun	ML	M	MH
Behouara	L	M	MH	Bennay	L	M	M	Bhamdoun El-Dayaa	L	M	MH
Bhamdoun El-Mhatta	L	M	MH	Bkhechtey	L	M	MH	Bleibel	ML	M	MH
Bmakine	ML	M	MH	Bmehray	L	ML	M	Bouzrid	L	M	M
Bserrine	L	M	MH	Bsous	L	M	M	Btalloun	L	M	MH
Btater	L	M	MH	Chanay	L	M	MH	Charoun	VL	M	MH
Chartoun	L	M	M	Chemlane	L	M	MH	Choueifat El-Aamrous	M	M	MH
Choueifat El-Oumara	M	M	MH	Choueifat El-Quoubbe	M	M	MH	Dakkoun	L	M	M
Deir Qoubel	ML	M	MH	Dfoun	L	M	M	Douair El Remmaneh	L	M	M
Ghaboun	L	M	MH	Habramoun	L	M	M	Homs Oua Hama	L	M	MH
Houmal	ML	M	MH	Jisr El Qadi	L	M	M	Kehaleh	L	M	M
Keyfoun	L	M	MH	Kfar Aamey	L	M	MH	Kommatyeh	L	M	MH
Maasrati	L	M	M	Majdel Baana	L	M	MH	Mansourieh et Ain El	L	M	MH
Mazraat El-Nahr	L	M	M	Mchakhte	VL	ML	M	Mecherfeh	L	M	MH
Mejdlaya	L	M	M	Mrayjat	VL	M	M	Ramliyah	L	M	M
Rechmaya	L	M	M	Rejmeh	L	M	M	Remhala	L	M	M
Rouaysset El Neemane	L	M	MH	Saoufar	VL	M	MH	Selfaya	L	M	M
Sirhmoul	L	M	MH	Souq El Ghareb	L	M	MH	Taazanieh	L	M	MH

## Kesrouane

Municipality	21-Jan	22-Jan	23-Jan	Municipality	21-Jan	22-Jan	23-Jan	Municipality	21-Jan	22-Jan	23-Jan
Achkout	L	ML	M	Adma Oua Dafneh	ML	M	MH	Ain Ed-Delbe Kesroua	L	L	M
Ain El-Rihane	ML	M	M	Aintoura Kesrouane	ML	M	MH	Ajaltoun	L	ML	M
Akaybeh Kesrouane	ML	M	MH	Aramoun Kesrouane	L	M	M	Azra ouel Ozor	L	ML	M
Ballouneh	L	ML	M	Batha	L	M	M	Bekaatat Achkout	L	ML	M
Bekaatat Kanaan	L	ML	M	Bizhel	ML	ML	M	Bouar	ML	M	MH
Bqaatouta	VL	ML	M	Bqaq Ed-Dine	ML	M	MH	Bzommar	L	M	M

Chahtoul	L	ML	M	Chnaniir	L	M	M	Chouan	L	ML	M
Daraya Kesrouane	L	ML	M	Darououn	ML	M	M	Deir Baqlouch	ML	M	M
Dlebta	L	ML	M	Eghbeh	L	L	M	Faraya	L	ML	M
Fatka	ML	ML	M	Feytroun	L	ML	M	Ghazir	ML	M	M
Ghbaleh Kesrouane	L	ML	M	Ghedrass	L	L	M	Ghosta	L	M	M
Ghynéh	L	ML	M	Harharaya w Kattine	L	ML	M	Harissa Kesrouane	ML	M	MH
Hayata	L	ML	M	Hosein	L	L	M	Hrajel	VL	M	M
Jdeideh Ghazir	L	M	M	Jeita	ML	M	MH	Jounieh Ghadir	M	M	MH
Jounieh Haret Sakhr	M	M	MH	Jounieh Salel Alma	ML	M	MH	Jounieh Sarba	M	M	MH
Jouret Bedrane	L	ML	M	Jouret Mhad	L	ML	M	Jouret Termos	L	ML	M
Kfar Debiane	L	ML	M	Kfar Tay Kesrouane	L	L	M	Kfar Yassine	M	M	MH
Kfour Kesrouane	L	ML	M	Kharayeb Nahr Ibrahi	ML	ML	M	Klayaat Kesrouane	L	ML	M
Maarab	L	ML	M	Maaysra Kesrouane	ML	ML	M	Mayrouba	L	M	M
Mazraat Er-Ras	ML	M	MH	Mazraat Mrah El-Mir	L	ML	M	Mchaa El Ftouh	L	L	M
Mchaa Faraya	VL	ML	M	Mchaa Kfar Dibiane	L	ML	M	Mghaer	VL	L	M
Mradiyah	L	ML	M	Nahr Ed-Dahab	L	L	M	Nammoura Kesrouane	ML	ML	M
Ouata El Jaouz	L	ML	M	Ouata Sillam	M	M	MH	Raachine	L	L	M
Rayfoun	L	M	M	Safra Kesrouane	ML	M	MH	Shayle Kesrouane	ML	M	M
Tabarja	ML	M	MH	Yahchouch	L	ML	M	Zaaytreh	L	ML	M
Zeytoun	ML	ML	M	Zouk Mikael	M	M	MH	Zouk Mosbeh	ML	M	MH

## Baalbek\_Hermel

### Baalbek

Municipality	21-Jan	22-Jan	23-Jan	Municipality	21-Jan	22-Jan	23-Jan	Municipality	21-Jan	22-Jan	23-Jan
Aadous	M	M	M	Aamchki	L	M	M	Aarsal	M	M	M
Ain Baalbek	M	M	M	Ain Bourday	L	M	M	Ain El-Benye	L	M	M
Ain El-Jaouz Baalbek	ML	M	M	Ain El-Siya Chadoura	L	M	M	Al Khodr Baalbek	M	M	M
Al Nabi Chit	M	M	M	Aynata Baalbek	M	M	M	Baalbek	ML	M	M
Bachwat	M	M	M	Barqa	M	M	M	Bednayel Baalbak	M	M	M
Beit Chama	M	M	M	Bijjaje	M	M	M	Bouday	M	M	M
Brital	ML	M	M	Btadi	M	M	M	Chaat	M	M	M
Chaibe	L	M	M	Chlifa	M	M	M	Chmestar	M	M	M
Dar El-Oussa	M	M	M	Deir El-Ahmar	M	M	M	Deir Mar Maroun Baal	L	M	M
Douris	M	M	M	Fakiha	M	M	M	Hadath Baalbek	M	M	M
Ham	L	M	M	Haour Taala	ML	M	M	Hizzine	M	M	M
Hlebta	ML	M	M	Hosh Barada	M	M	M	Hosh El Dahab	M	M	M
Hosh El Snid	M	M	M	Hosh El-Nabi	M	M	M	Hosh El-Rafiq	M	M	M
Hosh Tal Safiya	M	M	M	Hrebta	M	M	M	laat	M	M	M
Jebaa	M	M	M	Jenta	M	M	M	Kfar Dabach	M	M	M
Kfar Dane	M	M	M	Khraibeh El-Hermel	ML	M	M	Khreibet Baalbek	ML	M	M
Kneisset Baalbek	M	M	M	Labueh	M	M	M	Maarboun	L	M	M
Majdaloun	M	M	M	Maqneh	M	M	M	Mazraat Beit Mcheik	M	M	M
Misraya	M	M	M	Moqraq	M	M	M	Nabha El-Damdoum	M	M	M
Nabi Chbay	L	M	M	Nabi Osman	M	M	M	Nahleh baalbek	ML	M	M
Ouadi El-Oss	ML	M	M	Qaa Baayoun	ML	M	M	Qaa Jouar Maqiye	L	M	M
Qaa Ouadi El-Khanzir	ML	M	M	Qah Baalbek	M	M	M	Qarha Baalbek	ML	M	M



Qsarnaba	M	M	M	Ram Baalbek	M	M	M	Ras Baalbek El Sahl	M	M	M
Ras Baalbek El-Charq	M	M	M	Riha	M	M	M	Saaide	M	M	M
Sbouba	M	M	M	Seriine El-Tahta	M	M	M	Slouqi	M	M	M
Taiba Baalbek	M	M	M	Talia	M	M	M	Taraiya	M	M	M
Temnin El Fawqa	M	M	M	Temnin El-Tahta	M	M	M	Tfail	ML	M	M
Yahfoufa	M	M	M	Yammouneh	M	M	M	Younine	M	M	M
Zboud	M	M	M								

## Hermel

Municipality	21-Jan	22-Jan	23-Jan	Municipality	21-Jan	22-Jan	23-Jan	Municipality	21-Jan	22-Jan	23-Jan
Charbine El-Hermel	L	L	M	Hermel Jbab	ML	M	M	Hermel	L	M	M
Maaysra El-Hermel	L	M	M	Michaa Mrajhine	L	ML	M	Ouadi Faara	L	M	M
Ras Baalbek - Ouadi	M	M	M	Ras Baalbek El Gharb	L	M	M	Zighrine	L	ML	M

## Akkar

### Akkar

Municipality	21-Jan	22-Jan	23-Jan	Municipality	21-Jan	22-Jan	23-Jan	Municipality	21-Jan	22-Jan	23-Jan
Aain Tinta	L	M	M	Aaiyat	L	M	M	Aakkar El-Aatiqa	L	L	M
Aamar Akkar	L	M	M	Aamar El Baykat	L	M	M	Aamayer	L	M	M
Aamriyet Akkar	VL	M	M	Aandqet	L	ML	M	Aarmeh	L	ML	M
Aarqa	L	M	M	Aawaynat	VL	M	M	Aayoun Akkar	VL	M	M
Abboudiye	L	M	M	Ain El-Zeit	VL	M	M	Ain Yaaqoub	L	ML	M
Akroum	L	ML	M	Aridet Cheikh Zennad	L	M	M	Baldeh w Mazraat Bal	VL	M	M
Barcha	L	M	M	Bardeh	VL	M	M	Bebnine	L	M	M
Beino	VL	M	M	Beit Ayoub	L	M	M	Beit El-Haouch	L	M	M
Beit Mellat	VL	M	M	Beit Younes	VL	ML	M	Berbara Akkar	L	M	M
Berqayel	L	M	M	Bezbina	L	L	M	Bireh Akkar	VL	M	M
Borj	L	M	M	Bqerezla	L	M	M	Bzal	L	ML	M
Chane	L	L	M	Chaqdouf	L	M	M	Charbila	L	M	M
Cheikh Mohammad	L	M	M	Cheikh Taba Es-Sahl	L	M	M	Cheikh Taba	L	M	M
Cheikh Zennad	L	M	M	Cheikhlar	VL	M	M	Chir Hmairine	L	M	M
Daghle	L	M	M	Dahr Laissine	VL	M	M	Darine	L	M	M
Dawra	L	L	M	Dawsa w Baghdadi	L	M	M	Dayret Nahr El-Kabir	VL	ML	M
Deir Dalloum	L	M	M	Deir Jennine	L	M	M	Denbou	L	ML	M
Dibbabiyyeh	VL	M	M	Douair Aadwiyeh	VL	M	M	Fassikine	L	M	M
Fnaydek	L	L	M	Fraydes Akkar	VL	M	M	Ghazayle	L	M	M
Habchit	VL	L	M	Hakour	L	M	M	Halba	L	M	M
Haouchab	L	M	M	Hayssat	L	M	M	Haytla	L	M	M
Hayzouq	VL	M	M	Hedd	VL	M	M	Hmaira Akkar	L	M	M
Hmaiss Akkar	VL	M	M	Hnaider	L	M	M	Hokr Ed-Dahri	L	M	M
Hokr Etti	L	M	M	Hokr Jouret Srar	L	M	M	Houaich	L	ML	M
Hrar	L	ML	M	Idbil	L	M	M	Ilal	L	M	M
Janine	L	M	M	Jdeidet El-Joumeh	L	M	M	Jdeidet El-Kaiteh	L	M	M
Jebroyel	L	M	M	Kafr	L	ML	M	Kafr	VL	M	M
Karm Asfour	L	M	M	Kfar Melki Akkar	L	M	M	Kfar Noun	VL	ML	M
Kfarharra	VL	M	M	Khalsa	VL	M	M	Kharnoubet Akkar	L	M	M

Khirbet Daoud Aakkar	VL	M	M	Khirbet El Remmane	VL	M	M	Khirbet Shar	L	M	M
Khoreybet El-Jindi	L	M	M	Khreibet Aakkar	L	M	M	Kneisset Aakkar	L	M	M
Kneisset Hnaider	L	M	M	Knisse	VL	M	M	Kroum El-Aarab	L	M	M
Kwachra	VL	M	M	Kweykhat	L	M	M	Machta Hammoud	VL	ML	M
Majdala	L	M	M	Majdel Akkar	L	M	M	Mar Touma	L	M	M
Marlaya Melhem	L	M	M	Mashha	L	M	M	Massoudiye	L	M	M
Mazraat Beit Ghattas	L	M	M	Mazraat En-Nahriye	VL	M	M	Mechmech	L	L	M
Memneh	VL	L	M	Mhammara	L	M	M	Mighraq Aakkar	L	M	M
Minyara	L	M	M	Moqayteh	L	M	M	Mounjez	VL	M	M
Msalla	L	M	M	Mzeihmeh	L	M	M	Nfaiseh	L	M	M
Noura Et-Tahta	L	M	M	Ouadi El-Haour	L	M	M	Ouadi El-Jamous	L	M	M
Ouyoun El-Ghizlane	L	M	M	Qaabarine	L	M	M	Qabaait	L	ML	M
Qachlaq	L	M	M	Qantara Aakkar	L	M	M	Qarha Aakkar	L	M	M
Qarqaf	L	M	M	Qboula	VL	M	M	Qleiaat Aakkar	L	M	M
Qloud El-Baqie	L	M	M	Qobaiyat Aakkar	L	ML	M	Qobbat Chamrat	L	M	M
Qorayat	L	ML	M	Qornet Aakkar	L	M	M	Qsair Aakkar	VL	M	M
Rahbe	L	M	M	Rihaniyet Aakkar	L	M	M	Rmah	VL	M	M
Rmoul	L	M	M	Saadine	L	M	M	Sadaqa	L	M	M
Saidnaya	L	M	M	Sammouniye	L	M	M	Sayssoq	L	M	M
Semmaqiye	L	M	M	Semmaqli	L	M	M	Sfinet El-Dreib	VL	M	M
Sfinet El-Qaitaa	L	ML	M	Sindyanet Zeidane	L	ML	M	Souaisset Aakkar	VL	M	M
Srar	L	M	M	Tal Abbas El Gharby	L	M	M	Tal Abbas El-Chargy	L	M	M
Tal Biret	L	M	M	Tal Hmayra	L	M	M	Tal Maayan Tal Kiri	L	M	M
Tal Sibel	L	M	M	Tallet Chattaha	VL	M	M	Tikrit	L	M	M
Tleil	L	M	M	Tshea	L	L	M	Zawarib	L	M	M
Zouq El Hosniyeh	L	M	M	Zouq El-Haddara	L	M	M	Zouq El-Hbalsa	L	M	M
Zouq El-Moqachrine	L	M	M								

## Sud

### Sour

Municipality	21-Jan	22-Jan	23-Jan	Municipality	21-Jan	22-Jan	23-Jan	Municipality	21-Jan	22-Jan	23-Jan
Aaiyeh	L	M	M	Aalma El-Chaab	L	M	M	Aaytit	L	M	M
Abbassiyeh Sour	M	M	MH	Abou Chech	ML	M	MH	Ain Abou Abdallah	M	M	MH
Ain Baal	M	M	M	Arzoun	L	M	M	Aziyeh	ML	M	M
Baflaya	L	M	M	Barich	L	M	M	Batouliyeh	M	M	MH
Bayad	L	M	M	Bazouriyeh	M	M	M	Bediass	ML	M	M
Bestiyat	L	M	M	Borj El Chemali	M	M	MH	Borj En-Naqoura	M	M	MH
Borj Rahhal	M	M	M	Boustane	L	M	M	Btaychiyeh	ML	M	MH
Chaaitiye	M	M	M	Chameh	ML	M	M	Chehabiye	L	M	M
Chehour	L	ML	M	Chihine	L	M	M	Debaal Sour	L	M	M
Deir Amess	L	ML	M	Deir Kifa	L	M	M	Deir Qanoun El-Ain	M	M	MH
Deir Qanoun El-Naher	ML	M	M	Derdghaiya	L	M	M	Dhayra	L	M	M
Halloussiyeh	ML	M	M	Hamoul	L	M	M	Hanaouey	M	M	M
Henniye	M	M	MH	Hmairi Sour	ML	M	M	Iskandarouna Sour	M	M	M
Jbal El Botom	L	M	M	Jebbin	L	M	MH	Jennata	ML	M	M
Jijim	L	M	M	Jouaiya	L	M	M	Kneisset Sour	M	M	M

Maarake	L	M	M	Maaroub	L	M	M	Majadel	L	M	M
Majdalzoun	ML	M	M	Mansouri Sour	M	M	MH	Marnba	L	ML	M
Marouahine	L	M	M	Mazraat El-Zalloutiy	L	M	M	Mazraat Mechref	L	M	M
Mazraat Tayr Semhat	L	ML	M	Mheilib	M	M	MH	Neffakhiyeh	L	M	M
Niha Sour	L	M	M	Ouadi Jilo	ML	M	M	Qana	L	M	M
Qolaileh Sour	M	M	MH	Rechknay	L	ML	M	Rmadiyah	M	M	M
Selha Sour	L	M	M	Siddiqine	L	M	M	Sour	M	M	H
Srifa	L	M	M	Tayr Debbe	M	M	M	Tayr Felsay	ML	M	M
Tayr Harfa	L	M	MH	Touayri	L	ML	M	Toura	ML	M	M
Yanouh Sour	L	M	M	Yarine	L	M	MH	Zebqine	L	M	M

## Saida

Municipality	21-Jan	22-Jan	23-Jan	Municipality	21-Jan	22-Jan	23-Jan	Municipality	21-Jan	22-Jan	23-Jan
Aanqoun	M	M	M	Aaqtanit	M	M	M	Aarab Ej-Jall	ML	M	M
Aarab Tabbaya	ML	M	M	Abra Saida	M	M	M	Adloun	M	M	M
Adousiyeh	M	M	M	Ain-El-Deleb	M	M	M	Arzai	M	M	M
Babliyah	M	M	M	Barty	L	M	M	Bissariyeh	M	M	M
Bnaafoul	M	M	M	Bqosta	M	M	M	Bramiy	M	M	M
Daoudiyeh	M	M	M	Dareb El-Sim	M	M	M	Erkay	M	M	M
Ghassanieh	M	M	M	Ghazieh	M	M	M	Hajjeh	M	M	M
Haret Saida	M	M	M	Hartiyeh	M	M	M	Hlaliye Saida	M	M	M
Insariyat	M	M	M	Jazira Saida	M	M	M	Kafar Bit	L	M	M
Kaoutariyet El-Siyad	ML	M	M	Kfar Chellal	ML	M	M	Kfar Hatta Saida	ML	M	M
Kfar Milke Saida	L	M	M	Khartoum	ML	M	M	Khaziz	M	M	M
Khirbet Ed-Douair Sa	M	M	M	Khirbet El-Bassal	M	M	M	Khrayeb Saida	M	M	M
Loubieh	M	M	M	Maghdouche	M	M	M	Majdelyoun	M	M	M
Matariyet El-Choumar	M	M	M	Matayriyeh	M	M	M	Mazraat 'Mseileh	M	M	M
Mazraat 'Snaiber	M	M	M	Mazraat Aarab Soukka	ML	M	M	Mazraat Deir Taqla	M	M	M
Mazraat El Yahoudiye	M	M	MH	Mazraat El-Housseini	M	M	M	Mazraat El-Mhaydaleh	M	M	M
Mazraat El-Ouasta	M	M	M	Mazraat Jamjim	M	M	M	Mazraat Kaoutariyet	M	M	M
Mazraat Kfar Badda	M	M	M	Mazraat Oussamiyat	M	M	M	Mazraat Sari	M	M	M
Mazraat Sinai	ML	M	M	Meemariyeh	M	M	M	Merouaniyeh	M	M	M
Miyeh ou Miyeh	M	M	M	Najjariyeh	M	M	M	Qaaqiyat El-Snaouba	M	M	M
Qnarit	M	M	M	Qraiye Saida	M	M	M	Saida Ed-Dekermane	M	M	M
Saida El-Oustani	M	M	M	Saida El-Qadimeh	M	M	M	Saida Kefraya	M	M	M
Saksakiyeh	M	M	M	Salhie Saida	M	M	M	Sarafand	M	M	M
Sfenta	L	M	M	Tafahta	M	M	M	Tanbourit	M	M	M
Tebna	M	M	M	Zaghdraiya	M	M	M	Zeita	M	M	M
Zrariyeh	M	M	M								

## Jezzine

Municipality	21-Jan	22-Jan	23-Jan	Municipality	21-Jan	22-Jan	23-Jan	Municipality	21-Jan	22-Jan	23-Jan
Ain El-Mir (El Estab	M	M	M	Anane	L	M	M	Aramta	L	M	M
Ariya	L	M	M	Aychiyeh	ML	M	M	Azour	L	M	M
Baba	L	M	M	Bayssour Jezzine	M	M	M	Benoueteh Jezzine	L	M	M
Bhannine	L	M	M	Bisri	L	M	M	Bkassine	L	M	M
Bouslaya	L	M	M	Btedine El-Leqech	L	M	M	Chbail	M	M	M
Choualiq Jezzine	M	M	M	Dahr Ed-Deir	L	M	M	Deir El Qattine	L	M	M

Demachqiyeh	L	M	M	Ghabbatiyeh	L	M	M	Harf Jezzine	L	M	M
Hassaniyeh	ML	M	M	Haytouleh	ML	M	M	Haytura	L	M	M
Hidab	L	M	M	Homsiyeh	L	M	M	Jabal Toura	L	M	M
Jarmaq	L	M	M	Jensnaya	M	M	M	Jernaya	L	M	M
Jezzine	L	M	M	Karkha	ML	M	M	Kfar Falous	ML	M	M
Kfar Houna	L	M	M	Kfar Jarrah	M	M	M	Lebaa	M	M	M
Louayzet Jezzine	L	M	M	Machmouche	L	M	M	Mahmoudiyeh Jezzine	L	M	M
Maknounye Jezzine	L	M	M	Maraat Ouzaïyeh	L	M	M	Mazraat Daraya	L	M	M
Mazraat El-Aarqoub	M	M	M	Mazraat El-Mathane	L	M	M	Mazraat El-Rahbane	L	M	M
Mazraat Khallet Khaz	ML	M	M	Mazraat Louzid (Loua	M	M	M	Mazraat Qrouh	ML	M	M
Mazraat Tamra	L	M	M	Mazraat Zighrine Jez	M	M	M	Mazraat	L	M	M
Mharbiyeh	M	M	M	Midane Jezzine	L	M	M	Mjeydel Jezzine	M	M	M
Mlikh	L	M	M	Mrah El-Hbasse	M	M	M	Ouadi Baanqoudaine	M	M	M
Ouadi El-Laymoun	M	M	M	Ouardiyeh	ML	M	M	Qabaa Jezzine	L	M	M
Qatrani	ML	M	M	Qaytouleh	L	M	M	Qtaleh Jezzine	L	M	M
Rihane Jezzine	ML	M	M	Rimat	ML	M	M	Roum	L	M	M
Roummanet	L	M	M	Sabbah	L	M	M	Saydoun	L	M	M
Sfaray	ML	M	M	Snaya	L	M	M	Sojoud	ML	M	M
Srayri	ML	M	M	Taaid	L	M	M	Wadi Jezzine	L	M	M
Zhalta	L	M	M								

## Bekaa

### West Bekaa

Municipality	21-Jan	22-Jan	23-Jan	Municipality	21-Jan	22-Jan	23-Jan	Municipality	21-Jan	22-Jan	23-Jan
Aammiq BG	M	M	M	Ain El Tineh BG	ML	M	M	Ain Zebdeh	M	M	M
Ana	M	ML	M	Aytanit	M	M	M	Baaloul BG	M	ML	M
Bab Mareh	M	M	M	Chouberqiye Aammiq	M	ML	M	Dakoue	M	ML	M
Deir Ain El-Jaouze	M	M	M	Deir Tahniche	M	ML	M	Ghaza	M	ML	M
Harime El-Soughra	M	ML	M	Hoch Harimeh	M	ML	M	Jazira BG	M	ML	M
Jib Jennine	M	L	M	Kamed-El-Laouz	M	ML	M	Kefraya BG	M	M	M
Khiara El Atika	M	ML	M	Khiara	M	ML	M	Khirbet Qanafar	M	M	M
Lala	M	L	M	Lebbaya BG	M	ML	M	Loussa	M	M	M
Machghara	M	M	M	Manara (Hammara) BG	M	M	M	Mansoura BG	M	ML	M
Marej BG	M	ML	M	Maydoun	M	M	M	Ouaqf BG	M	ML	M
Qaraaoun	M	M	M	Qelya	ML	M	M	Raouda (Istabel)	M	ML	M
Saghbine	M	M	M	Sohmor	M	ML	M	Soltan Yacoub el Ara	M	ML	M
Souairy	M	M	M	Sultan Yaacoub	M	ML	M	Tal Znoun	M	ML	M
Yehmor BG	M	ML	M	Zilaya	M	M	M				

### Zahle

Municipality	21-Jan	22-Jan	23-Jan	Municipality	21-Jan	22-Jan	23-Jan	Municipality	21-Jan	22-Jan	23-Jan
Aanjar (Haouch Mouss	M	M	M	Ablah	M	M	M	Ain Kfarzabad	M	M	M
Ali-El-Nahri	M	M	M	Bar Elias	M	ML	M	Bouarej	M	M	M
Cheberqiyet Tabet	M	M	M	Chtaura	M	M	M	Deir El Ghazal	ML	M	M
Delhamiyet Zahle	M	M	M	Ferzol	M	M	M	Haouch El-Ghanam	M	M	M
Haouch Es-Siyadeh	M	ML	M	Haouch Hala	M	M	M	Haouch Mandara	M	M	M

Haouch Qayssar	M	ML	M	Hezerta	ML	M	M	Hosh Moussa	M	M	M
Jdita	M	M	M	Kfarzabad	M	M	M	Ksara	M	ML	M
Majdel Aanjar	M	M	M	Makssi	M	M	M	Massa	M	M	M
Mazraat Er-Remtaniye	M	M	M	Mrayjat Zahle	ML	M	M	Mzaraa Zahle	M	M	M
Nabi Ayla	M	M	M	Nasriyet Rizk	M	M	M	Nasriyet Zahle	M	ML	M
Niha Zahle	M	M	M	Ouadi Ed-Deloum	L	M	M	Ouadi El-Arayech	M	M	M
Qaa El Rim	M	M	M	Qab Elias	M	M	M	Qousaya	ML	M	M
Rhit	M	M	M	Riyak	M	ML	M	Saadnayel	M	ML	M
Taal El-Akhdar	M	ML	M	Taalbeya	M	M	M	Taanayel	M	M	M
Talamara	M	ML	M	Tcheflik Edde Haouch	M	M	M	Tcheflik Qiqano	M	ML	M
Terbol Zahle	M	M	M	Touaite Zahle	M	M	M	Zahle Aradi	M	M	M
Zahle El-Berbara	M	M	M	Zahle El-Maallaqa	M	M	M	Zahle El-Midane	M	M	M
Zahle Er-Rassiye	M	M	M	Zahle Haouch El-Ouma	M	ML	M	Zahle Haouch El-Ouma	M	M	M
Zahle Haouch Ez-Zara	M	M	M	Zahle Maalaga Aradi	M	M	M	Zahle Mar Antonios	M	M	M
Zahle Mar Elias	M	M	M	Zahle Mar Gerios	M	M	M	Zahle Saydet En-Naja	M	M	M
Zebdoul	M	M	M								

## Rachaiya

Municipality	21-Jan	22-Jan	23-Jan	Municipality	21-Jan	22-Jan	23-Jan	Municipality	21-Jan	22-Jan	23-Jan
Ain Arab Rachaiya	M	M	M	Ain Ata	ML	M	M	Ain Harche	L	M	M
Aqabe Rachaya	ML	M	M	Ayha	ML	M	M	Ayta El Fokhar	M	ML	M
Bakifa Rachaya	ML	M	M	Bakka	M	ML	M	Beit Lahya	ML	M	M
Bireh Rachaiya	M	ML	M	Daher El Ahmar	M	M	M	Deir El-Achayer	M	M	M
Heloua Rachaiya	M	M	M	Hoch El Qannabeh Rac	ML	M	M	Kaoukaba Bou Arab	M	ML	M
Kfar Danis	M	M	M	Kfar Mechki	M	M	M	Kfar Qouq	M	M	M
Kherbet Rouha	M	M	M	Majdel Balhiss	M	M	M	Mdoukha	M	ML	M
Mhaydseh Rachaiya	M	M	M	Nabi Safa	ML	M	M	Rachaiya	ML	M	M
Rafid Rachaiya	M	ML	M	Selsata (Mazraat Dei	M	M	M	Tannoura	ML	M	M
Yanta	M	M	M								

## Beyrouth

### Beyrouth

Municipality	21-Jan	22-Jan	23-Jan	Municipality	21-Jan	22-Jan	23-Jan	Municipality	21-Jan	22-Jan	23-Jan
Achrafieh	M	M	MH	Ain el-Mreisse	M	M	H	Bachoura	M	M	MH
Beirut Central Distr	M	M	MH	Marfai	M	M	MH	Mazraa	M	M	MH
Medaouar	M	M	MH	Minet el-Hosn	M	M	MH	Mwssaitbeh	M	M	MH
Ras Beirut	M	M	H	Rmeil	M	M	MH	Saifi	M	M	MH
Zqaq el-Blat	M	M	MH								