

# Lebanon Fire Risk Bulletin



CIVIL DEDEFENCE

**Refer to cadast table condition.**

**Please note that the indicated temperature is at 2 meters height from the ground.**

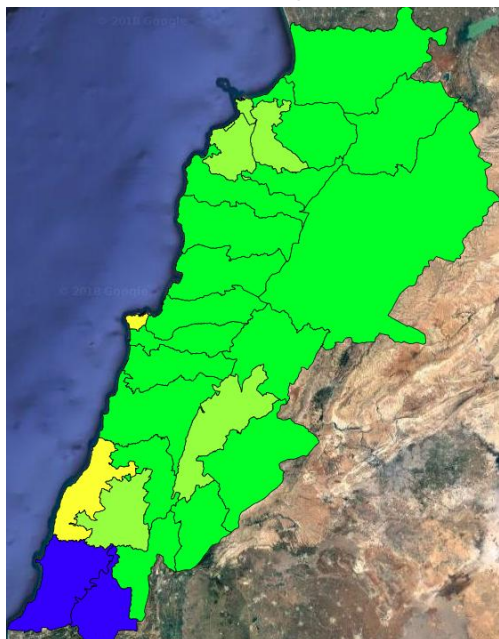
General description of potential fire risk situation

Symbol	Level of risk	Meaning and actions
VL	<b>Very low</b>	Very low fire risk. Controlled burning operations can be hardly executed due to high fuel moisture content. Normally wildfires self-extinguish.
L	<b>Low</b>	Low fire risk. Controlled burning operations can be executed with a reasonable degree of safety.
ML	<b>Medium low</b>	Medium-low fire risk. Controlled burning operations can be executed in safety conditions. All the fires need to be extinguished.
M	<b>Medium</b>	Medium fire risk. Controlled burning operations would be avoided. All the fires need to be very well extinguished.
M	<b>Medium high</b>	Controlled burning is not recommended. Open flame will start fires. Cured grasslands and forest litter will burn readily. Spread is moderate in forests and fast in exposed areas. Patrolling and monitoring is suggested. Fight fires with direct attack and all available resources.
H	<b>High</b>	Ignition can occur easily with fast spread in grass, shrubs and forests. Fires will be very hot with crowning and short to medium spotting. Direct attack on the head may not be possible requiring indirect methods on flanks. Patrolling and monitoring the territory is highly suggested.
E	<b>Extreme</b>	Ignition can occur also from sparks. Fires will be extremely hot with fast rate of spread. Control may not be possible during day due to long range spotting and crowning. Suppression forces should limit efforts to limiting lateral spread. Damage potential total. Patrolling and monitoring the territory is highly suggested.

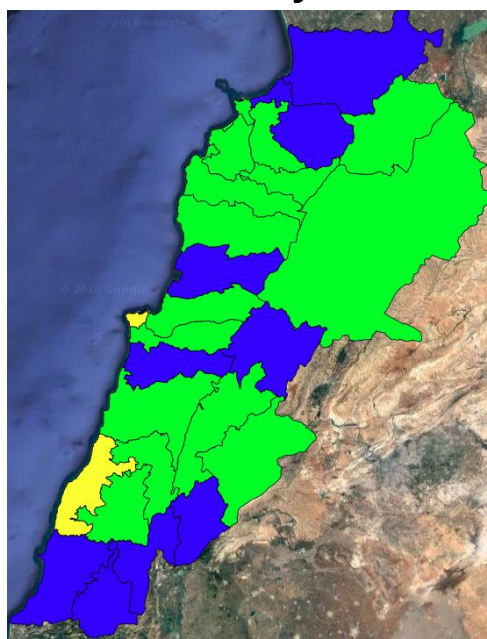
**Beirut, 22 February 2019**

# FIRE RISK INDEX

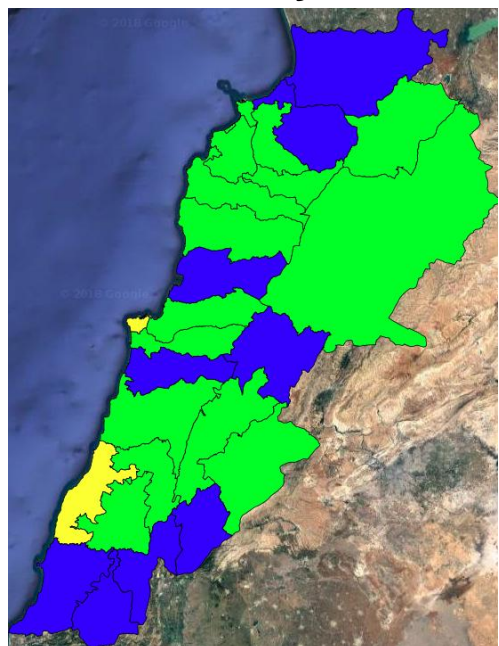
21 February 2019



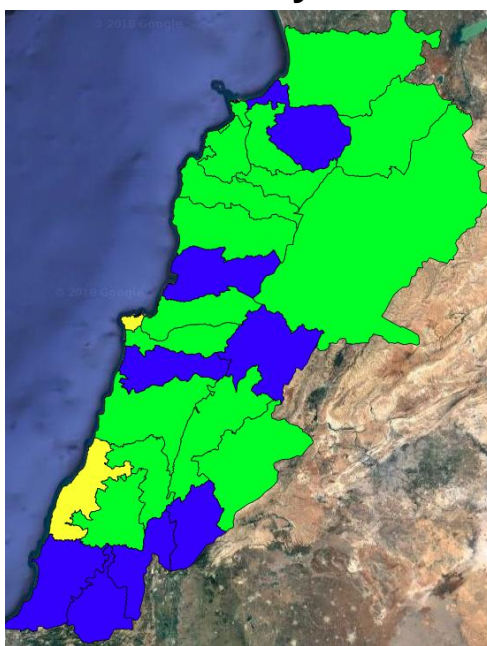
22 February 2019



23 February 2019



24 February 2019

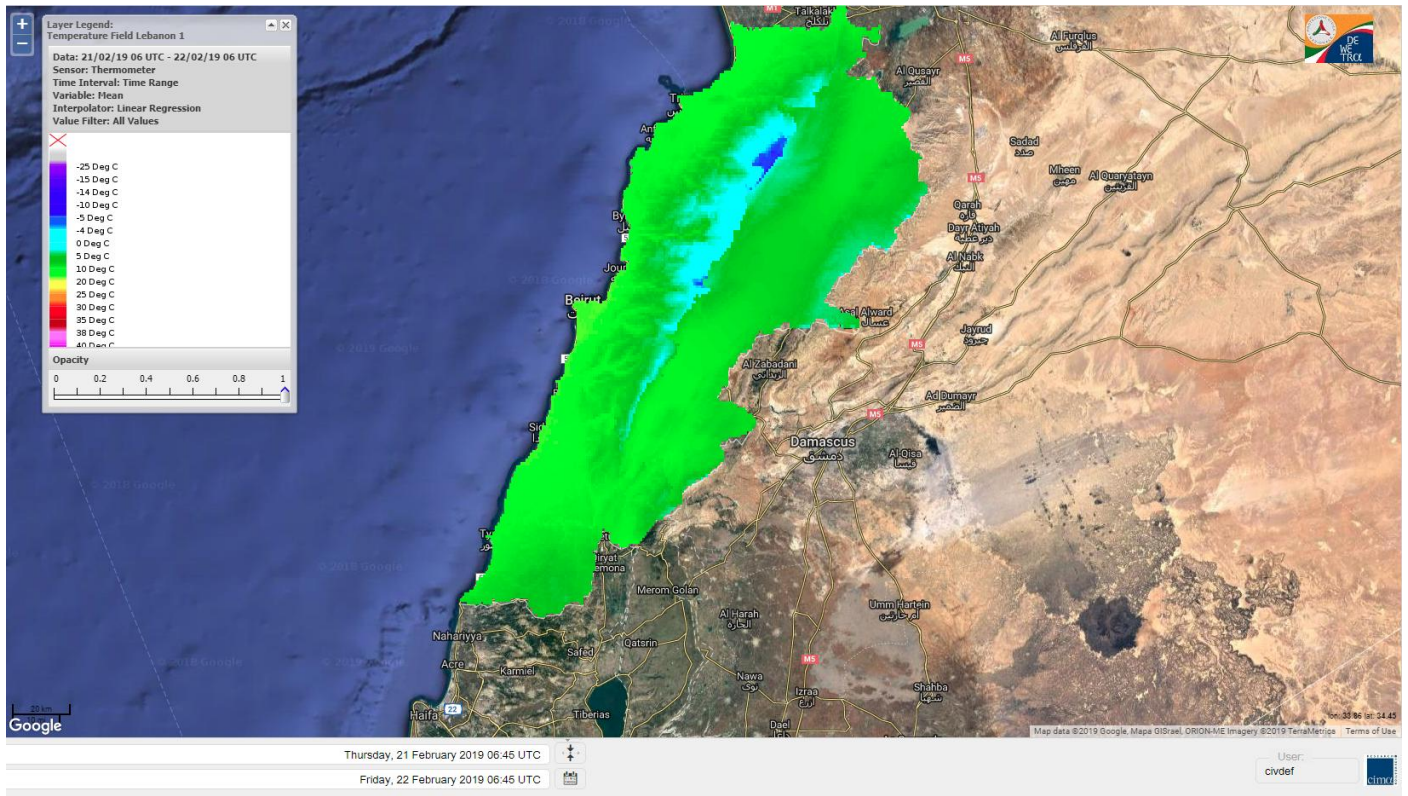


Layer Legend:  
Lebanon Wildfire Risk Index 1

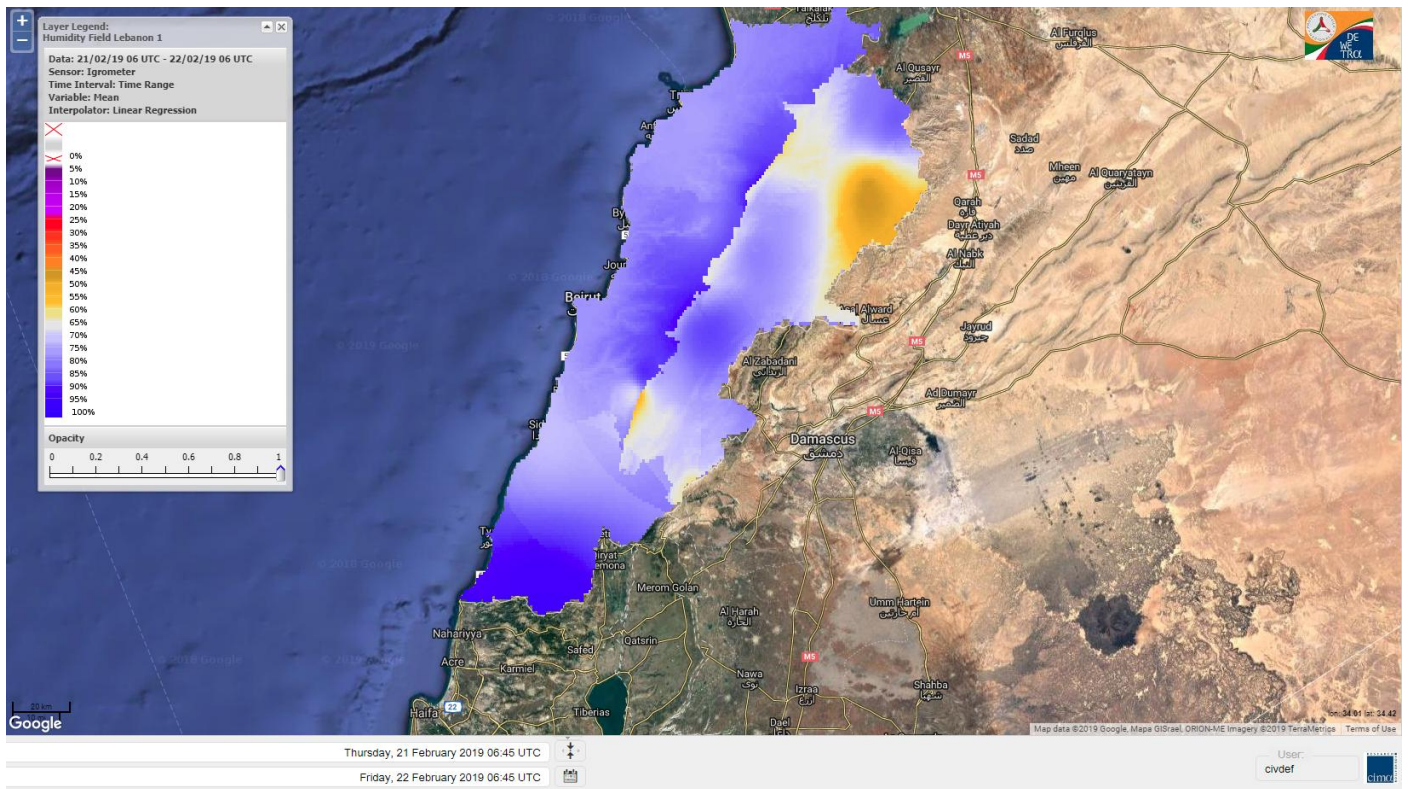
Data: Run: 22/02/2019 00:00. Forecast for 22  
Model: RISICO for the Republic of Lebanon  
Variable: Fire Weather Index  
Spatial Resolution: Caza

- VERY LOW
- LOW
- MEDIUM-LOW
- MEDIUM
- MEDIUM-HIGH
- HIGH
- EXTREME

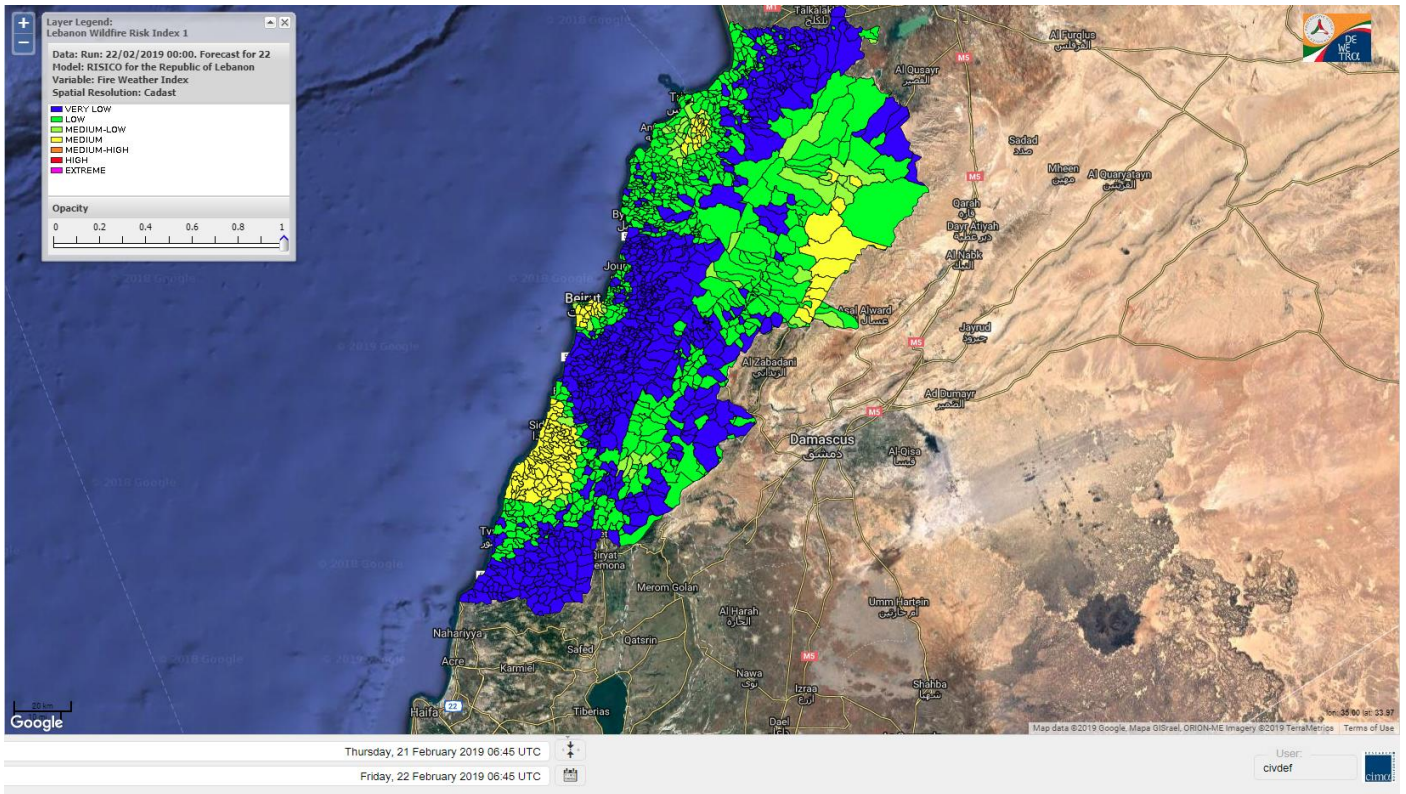
# Lebanon temperature for Lebanon 22 February 2019



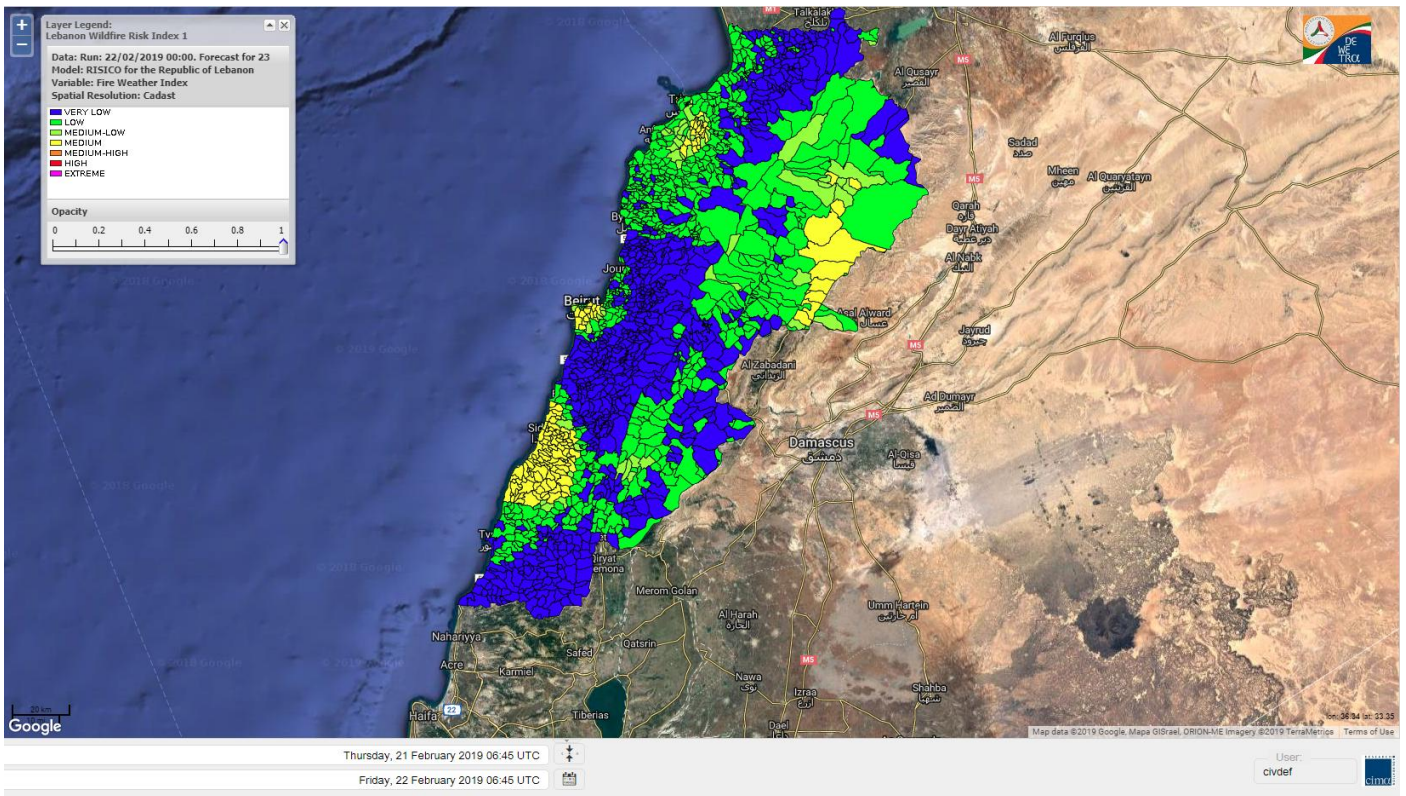
# Lebanon humidity for Lebanon 22 February 2019



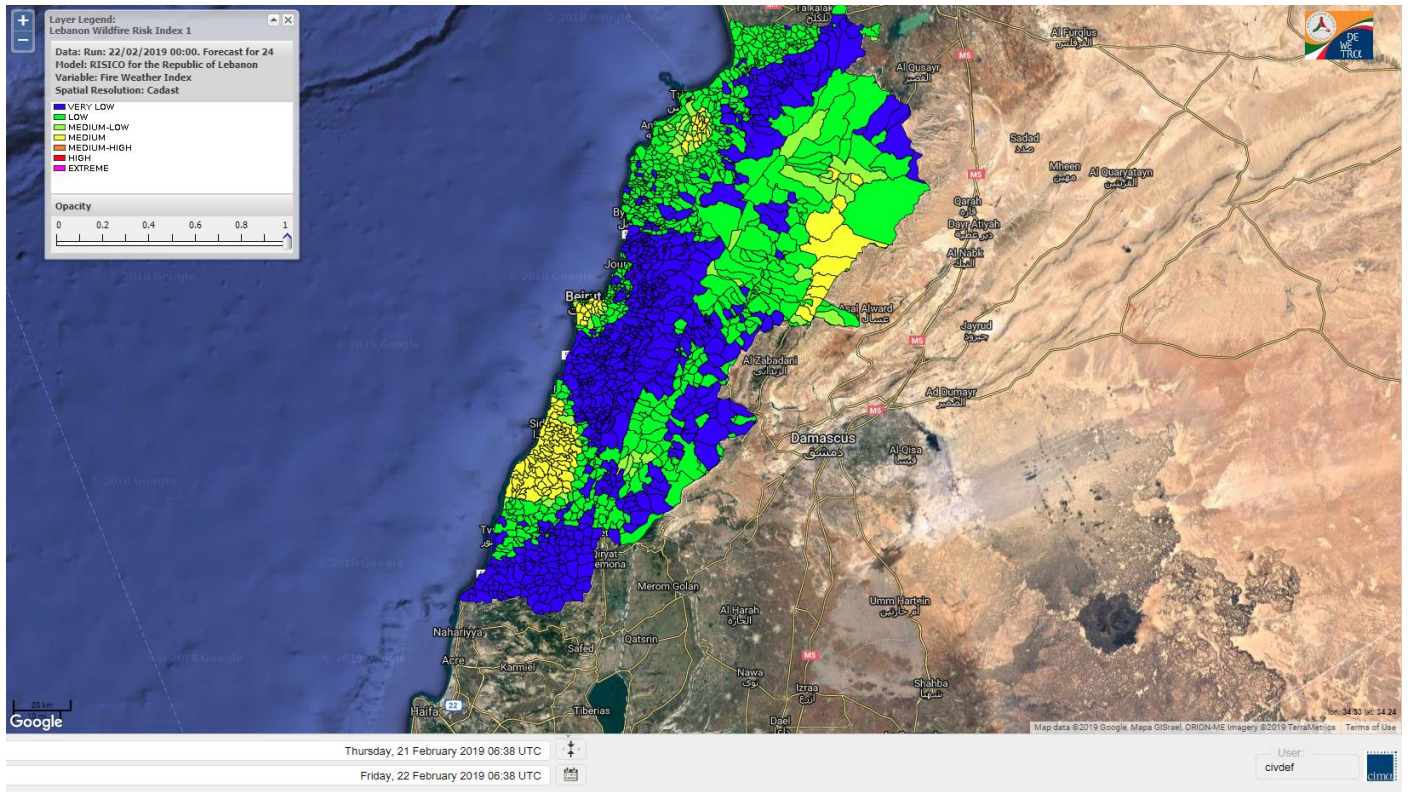
# Lebanon for 22 February 2019



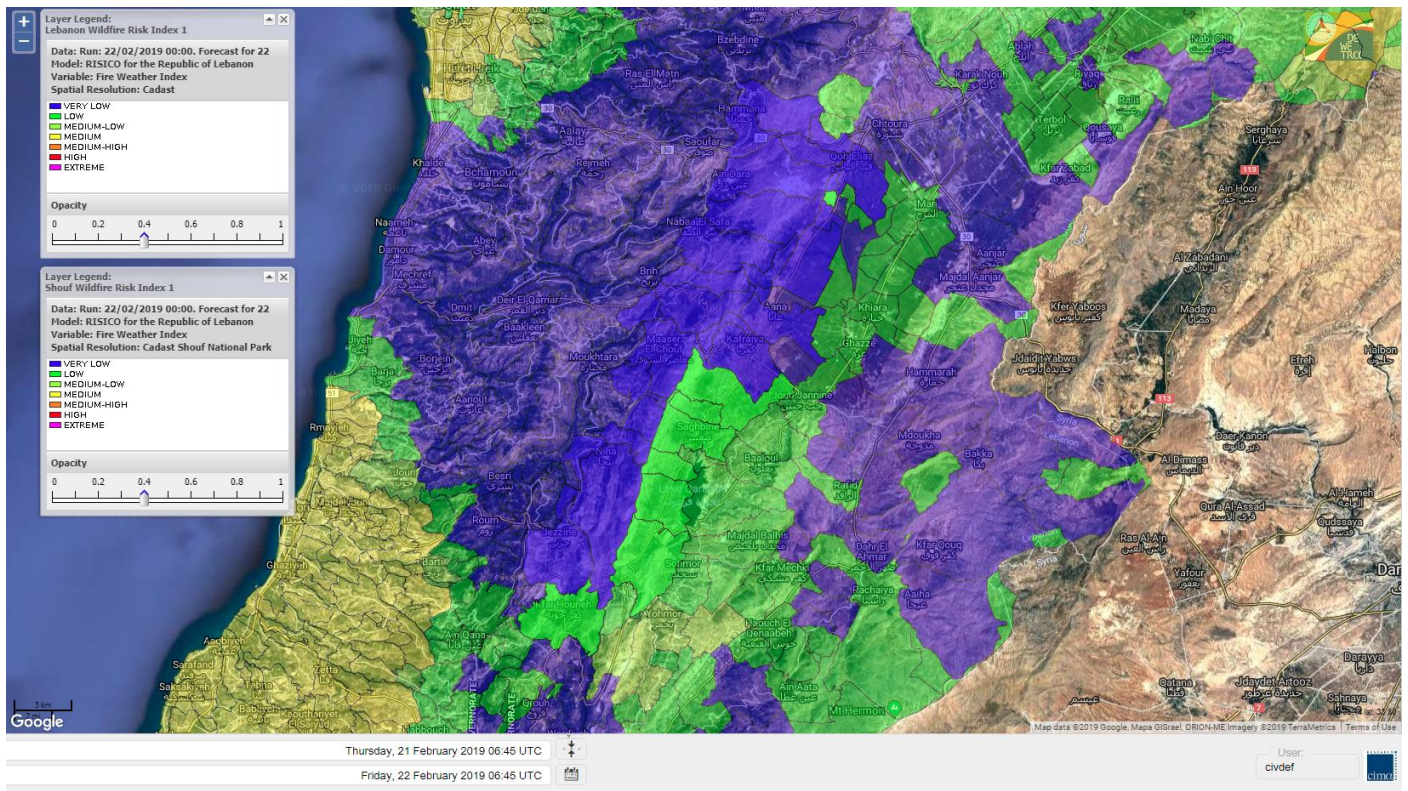
# Lebanon for 23 February 2019



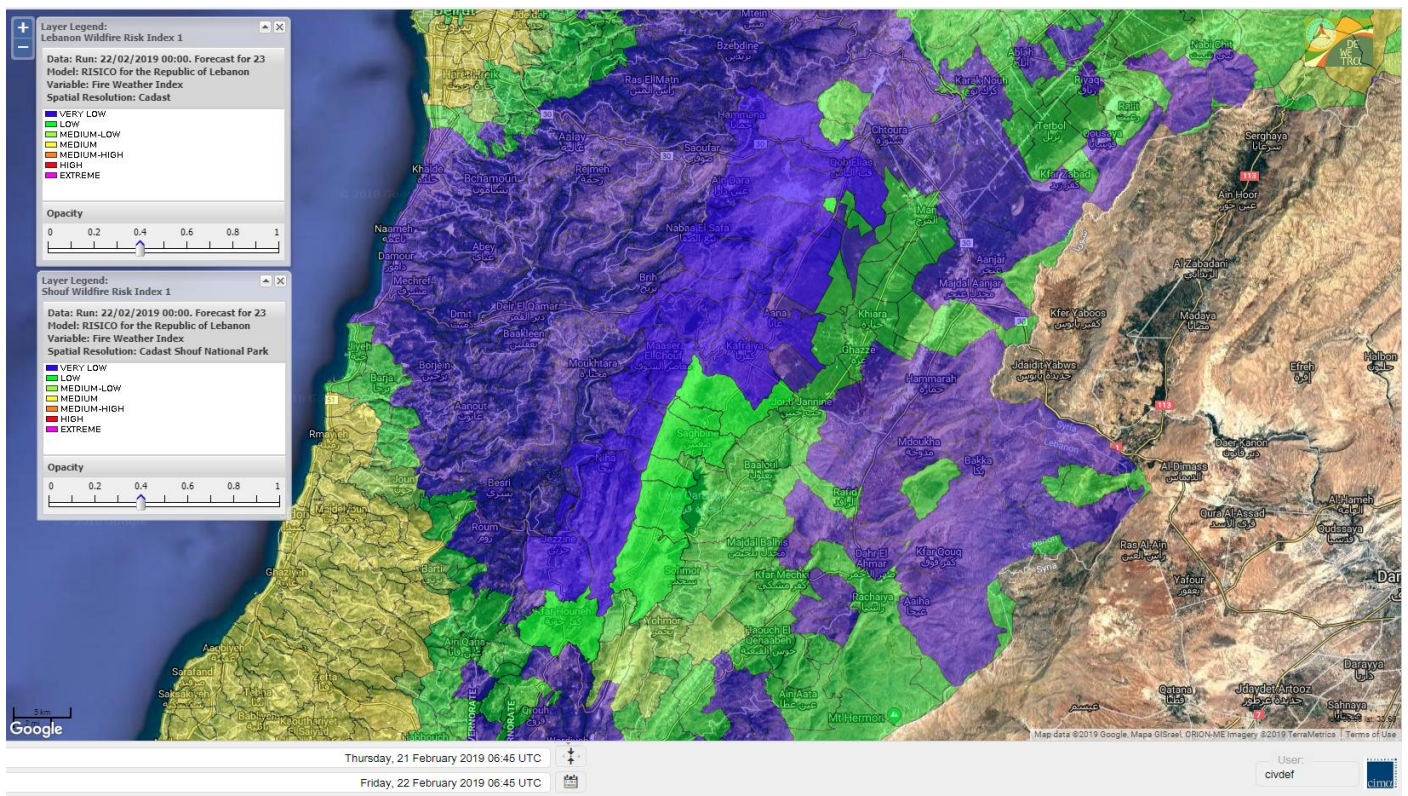
# Lebanon for 24 February 2019



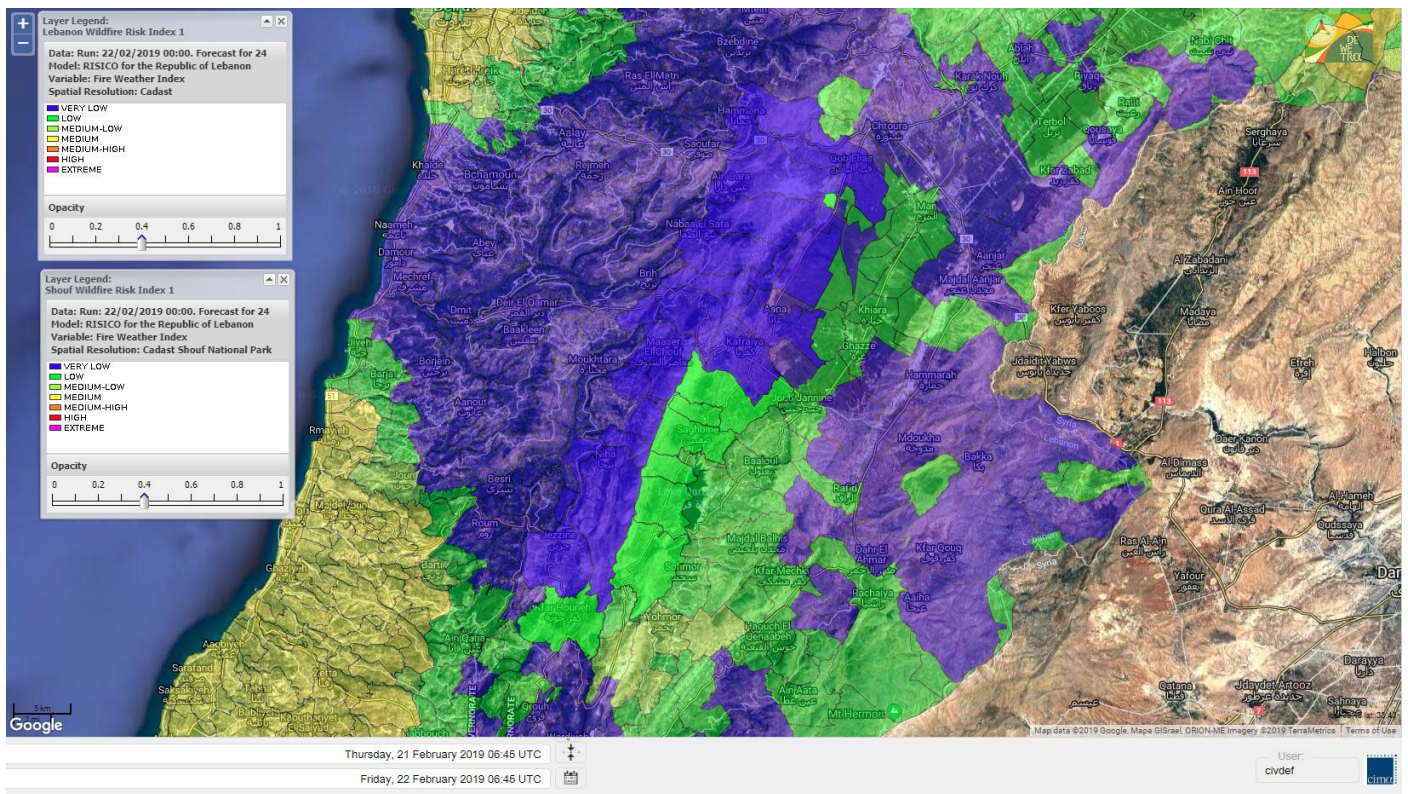
# Shouf Biosphere Reserve Forecast for 22 February 2019



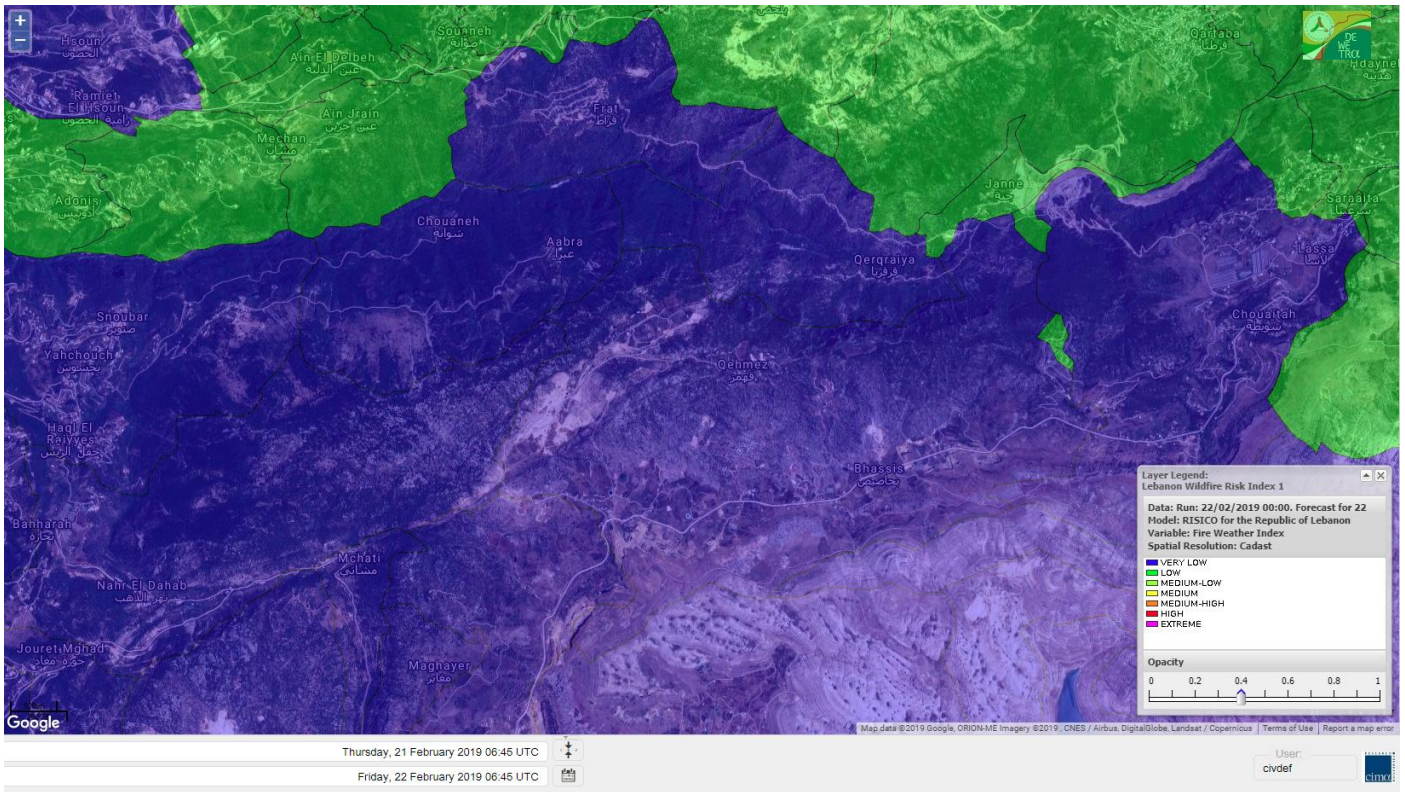
# Shouf Biosphere Reserve Forecast for 23 February 2019



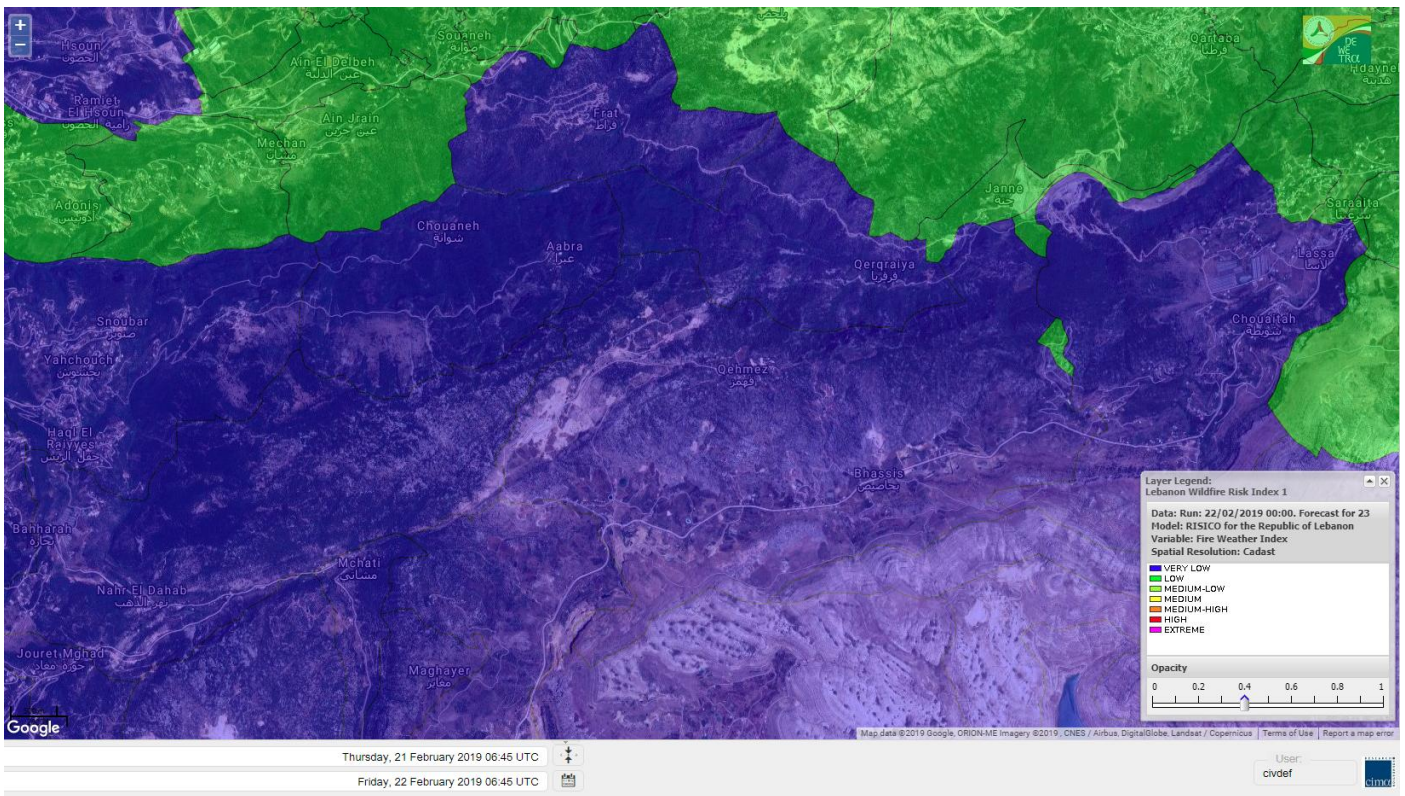
# Shouf Biosphere Reserve Forecast for 24 February 2019



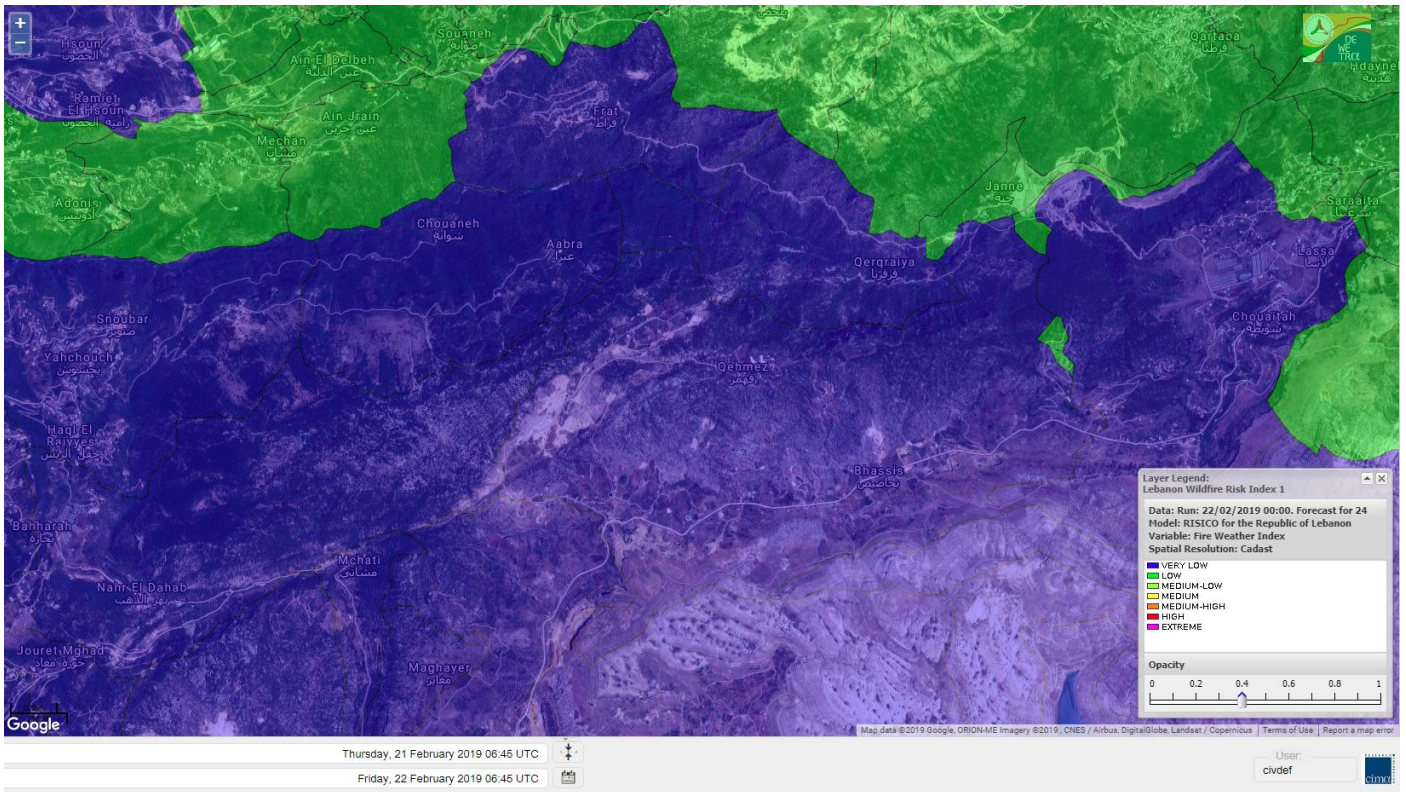
# Jabal Moussa Reserve Forecast for 22 February 2019



# Jabal Moussa Reserve Forecast for 23 February 2019



# Jabal Moussa Reserve Forecast for 24 February 2019

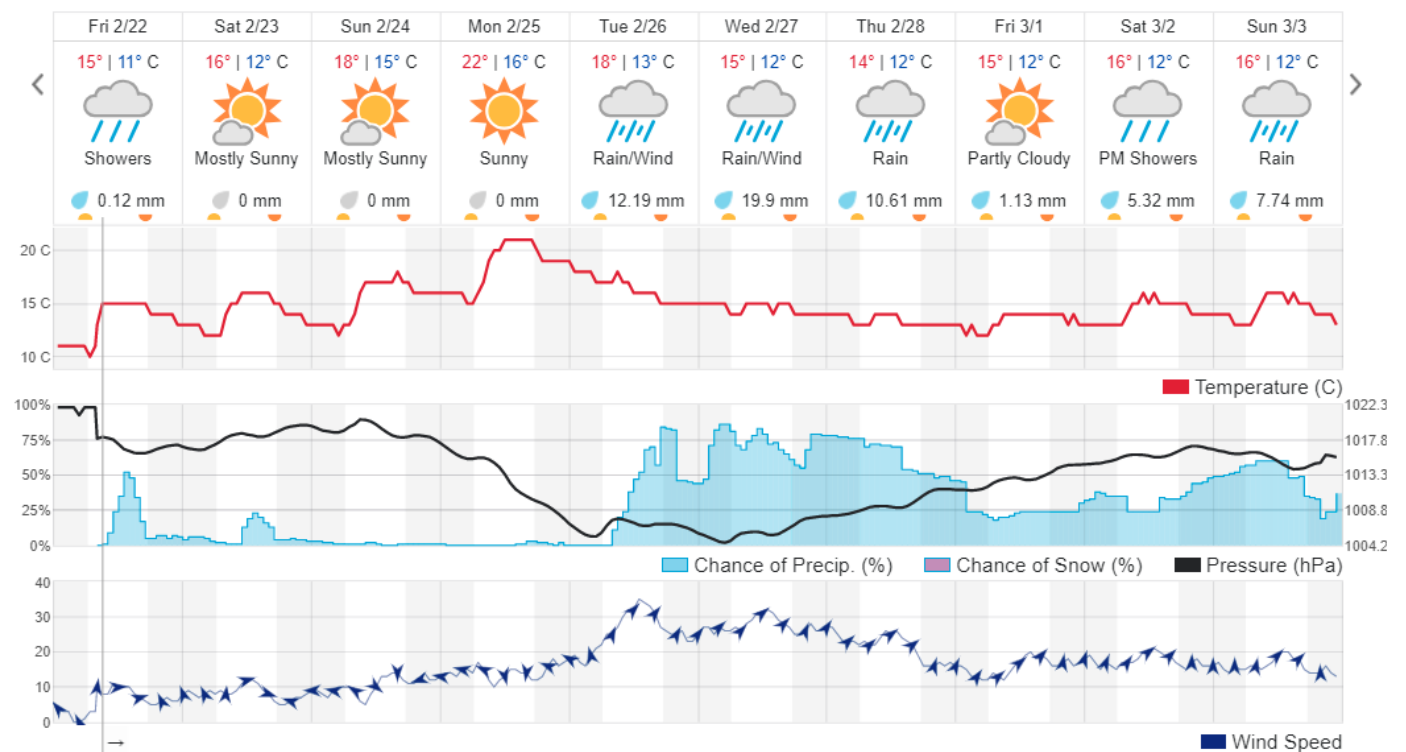


## Beirut, Lebanon

16° ACHRAFIEH, RIZK STATION | REPORT | CHANGE

TODAY HOURLY 10-DAY CALENDAR HISTORY WUNDERMAP

Customize





## Nord

### Koura

Municipality	22-Feb	23-Feb	24-Feb	Municipality	22-Feb	23-Feb	24-Feb	Municipality	22-Feb	23-Feb	24-Feb
Aaba	ML	ML	ML	Afsaddiq	L	L	L	Ain Ekrine	L	L	L
Amioun	ML	ML	ML	Anfeh	L	L	L	Badbhoun	L	L	L
Barghoun	L	L	L	Barsa	ML	ML	ML	Batroumine	ML	ML	ML
Bdebba	ML	ML	ML	Bechmizine	ML	ML	ML	Bednayel El-Koura	L	L	L
Bhabbouch El-Koura	L	L	L	Bkeftine	M	M	M	Bnehran	L	L	L
Bqaiia El-Koura	M	M	M	Bsarma	M	M	M	Btaaboura	L	L	L
Bterram	ML	ML	ML	Btouratij	L	L	L	Bziza	ML	ML	ML
Dar Beehtar	L	L	L	Dar Chmezzine	L	L	L	Deddeh	L	L	L
Deir El-Balamand	ML	ML	ML	Fih	L	L	L	Hraiche	L	L	L
Ijdaabrine	L	L	L	Kaftoun	L	L	L	Kefraya El-Koura	L	L	L
Kfarakka	M	M	M	Kfarhata	L	L	L	Kfarhazir	L	L	L
Kfarkahel	ML	ML	ML	Kfarsaroun	ML	ML	ML	Kosba	ML	ML	ML
Mejdel el-Koura	L	L	L	Nakhle	ML	ML	ML	Qalhat	ML	ML	ML
Ras Masqa	L	L	L	Rechdibbine	L	L	L	Zakroun	L	L	L
Zgharta El-Mtaouile	L	L	L								

### Bcharre

Municipality	22-Feb	23-Feb	24-Feb	Municipality	22-Feb	23-Feb	24-Feb	Municipality	22-Feb	23-Feb	24-Feb
Aabdine	L	L	L	Bane	VL	VL	VL	Barhelioun	L	L	L
Bazouone	VL	VL	VL	Becharre	L	L	L	Beit Menzer	L	L	L
Billa	VL	VL	VL	Blaouza	VL	VL	VL	Bqaa Kafra	VL	VL	VL
Bqerqacha	VL	VL	VL	Breissat	VL	VL	VL	Dimane	VL	VL	VL
Hadath El Jobbeh	VL	VL	VL	Hadchit	VL	VL	VL	Hasroun	VL	VL	VL
Mazraat Aassaf	VL	VL	VL	Mazraat Bani Saab	VL	VL	VL	Mchaa El-Jobbeh	L	L	L
Metrit	L	L	L	Moghr El-Ahoual	L	L	L	Ouadi Qannoubine	L	L	L
Qanat	VL	VL	VL	Qnayouer	L	L	L	Tourza	L	L	L

### Batroun

Municipality	22-Feb	23-Feb	24-Feb	Municipality	22-Feb	23-Feb	24-Feb	Municipality	22-Feb	23-Feb	24-Feb
Aabrine	VL	VL	VL	Aalali	VL	VL	VL	Aartiz	VL	VL	VL
Abdelli	VL	VL	VL	Ajdabra	VL	VL	VL	Assia	VL	VL	VL
Basbina	VL	VL	VL	Batroun	VL	VL	VL	Bcheleh	VL	VL	VL
Bechtoudar	L	L	L	Beit Chlala	L	L	L	Beit Kassab	VL	VL	VL
Bijdarfil	VL	VL	VL	Bqesmaya	L	L	L	Chatine	VL	VL	VL
Chebtin	VL	VL	VL	Chekka	L	L	L	Daael	L	L	L
Dahr Abi Yaghi	VL	VL	VL	Daraya El-Batroun	VL	VL	VL	Deir Billa	L	L	L
Deir Kfifane	VL	VL	VL	Deir Mar Youhanna EL	L	L	L	Deir Mar Youssef Jra	VL	VL	VL
Douma	L	L	L	Douq	VL	VL	VL	Eddeh El-Batroun	VL	VL	VL
Ftatah El-Batroun	VL	VL	VL	Ghouma	VL	VL	VL	Hadtoun	VL	VL	VL
Hamat	L	L	L	Harbouna	VL	VL	VL	Hardine	L	L	L
Helta	VL	VL	VL	Hery	L	L	L	Jebila	VL	VL	VL
Jrabta El-Batroun	VL	VL	VL	Jrane El-Batroun	VL	VL	VL	Kfar Aabida	VL	VL	VL
Kfar Halda	L	L	L	Kfarb Shlaimane	VL	VL	VL	Kfarhatna	VL	VL	VL
Kfarhay	L	L	L	Kfarhelos	VL	VL	VL	Kfifane	VL	VL	VL

Kfour El Arabi	L	L	L	Koubba	VL	VL	VL	Kour	VL	VL	VL
Mar Mama	VL	VL	VL	Masrah	VL	VL	VL	Mehmarch	VL	VL	VL
Mrah Chdid	VL	VL	VL	Mrah El Ziyat	VL	VL	VL	Mrah El-Hajj	VL	VL	VL
Nahle El-Batroun	VL	VL	VL	Niha El-Batroun	VL	VL	VL	Oujh El-Hajjar	VL	VL	VL
Ouata Houb	VL	VL	VL	Qatnaaoun	L	L	L	Racha	VL	VL	VL
Rachana	VL	VL	VL	Rachkida	L	L	L	Ram El-Batroun	VL	VL	VL
Ras Nahhach	L	L	L	Selaata	VL	VL	VL	Sghar	VL	VL	VL
Smar Jbayl	VL	VL	VL	Sourat El-Batroun	VL	VL	VL	Tannourine El-Faouqa	VL	VL	VL
Tannourine Et-Tahta	VL	VL	VL	Thoum	VL	VL	VL	Toula El-Batroun	VL	VL	VL
Zan	VL	VL	VL								

## Zgharta

Municipality	22-Feb	23-Feb	24-Feb	Municipality	22-Feb	23-Feb	24-Feb	Municipality	22-Feb	23-Feb	24-Feb
Aachach	VL	VL	VL	Aalma	L	L	L	Aarde	M	M	M
Aintourine	VL	VL	VL	Arabet Qozhaya	L	L	L	Arde	L	L	L
Arjis	M	M	M	Asnoun	M	M	M	Ayto	L	L	L
Basloukit	VL	VL	VL	Bchannine	ML	ML	ML	Besebeel	M	M	M
Bhairat Toula	VL	VL	VL	Bnachee	ML	ML	ML	Boussit	VL	VL	VL
Danha	VL	VL	VL	Daraiya Zgharta	M	M	M	Deir Jdeide	M	M	M
Ehden	VL	VL	VL	Halan	VL	VL	VL	Hariq Zgharta	L	L	L
Houakir	VL	VL	VL	Hraiqis	VL	VL	VL	Iaal	ML	ML	ML
Ijbaa	VL	VL	VL	Karm Saddeh	L	L	L	Kfarchakhna	M	M	M
Kfardlaqous	ML	ML	ML	Kfarfou	M	M	M	Kfarhata Zgharta	M	M	M
Kfarhoura	M	M	M	Kfarsghab	VL	VL	VL	Kfaryachit	M	M	M
Kfarzaina	M	M	M	Khaldiye	M	M	M	Mazraat Ajbeaa	M	M	M
Mazraat Et-Teffah	VL	VL	VL	Mazraat Jneid	M	M	M	Mejdlaiya Zgharta	L	L	L
Merh Kfarsghab	M	M	M	Miryata	VL	VL	VL	Miziara	L	L	L
Mzraat Kefraya	VL	VL	VL	Qorah Bach	M	M	M	Rachiine	L	L	L
Ras Kifa	M	M	M	Sakhra	L	L	L	Sebhel Zgharta	L	L	L
Serhel	L	L	L	Tallet Zgharta	M	M	M	Toula Zgharta	VL	VL	VL
Zgharta	ML	ML	ML								

## Minieh-Denniye

Municipality	22-Feb	23-Feb	24-Feb	Municipality	22-Feb	23-Feb	24-Feb	Municipality	22-Feb	23-Feb	24-Feb
Aasaymout	VL	VL	VL	Aaymar	VL	VL	VL	Aazki	VL	VL	VL
Ain El-Tineh-Miniyeh	VL	VL	VL	Assoun	VL	VL	VL	Bakhaaoun	VL	VL	VL
Bchennata	VL	VL	VL	Bechehhara	VL	VL	VL	Beddawi	L	L	L
Behouaita	VL	VL	VL	Beit El Foqss	VL	VL	VL	Beit Haouik	VL	VL	VL
Beit Zoud	VL	VL	VL	Bekaasafrine	VL	VL	VL	Borj El Yahoudiyeh	VL	VL	VL
Bqarsouna	VL	VL	VL	Btermaz	VL	VL	VL	Debaael	VL	VL	VL
Deir Ammar	VL	VL	VL	Deir Nbouh	VL	VL	VL	Haouaret-Miniyeh	VL	VL	VL
Haql el Azimeh	VL	VL	VL	Harf El Siyad	VL	VL	VL	Hazmiye-Miniyeh	VL	VL	VL
Izal	VL	VL	VL	Jarjour	VL	VL	VL	Jayroun	VL	VL	VL
Kahf El-Malloul	VL	VL	VL	Karm El-Moher	VL	VL	VL	Kfar Binine	VL	VL	VL
Kfarchalane	VL	VL	VL	Kfarhabou	VL	VL	VL	Kharroub-Miniyeh	VL	VL	VL
Mazraat El-Kreme	VL	VL	VL	Mazraat Ketrane	VL	VL	VL	Merkebta	VL	VL	VL
Minyeh	VL	VL	VL	Mrah El Sfirat	VL	VL	VL	Mrah Sraj	VL	VL	VL
Mrebbine	L	L	L	Nabi Youcheaa	VL	VL	VL	Nemrine	VL	VL	VL

Qarhaiya	VL	VL	VL	Qarne	VL	VL	VL	Qarsita	VL	VL	VL
Qattineh-Miniyeh	VL	VL	VL	Qemmamine	VL	VL	VL	Qraine	VL	VL	VL
Raouda-Aadoua	VL	VL	VL	Rihaniyet-Miniyeh	VL	VL	VL	Sfireh	VL	VL	VL
Sir Ed-Danniyeh	VL	VL	VL	Tarane	VL	VL	VL	Terbol-Miniyeh	VL	VL	VL
Zaghartaghriine	VL	VL	VL	Zouq Bhannine	VL	VL	VL				

## Nabatiye

### Nabatiye

Municipality	22-Feb	23-Feb	24-Feb	Municipality	22-Feb	23-Feb	24-Feb	Municipality	22-Feb	23-Feb	24-Feb
Aabba	ML	ML	ML	Aazzi	M	M	M	Adchit El-Chqif	L	L	L
Ain Bou Swar	VL	VL	VL	Ain Kana	L	L	L	Ali El-TaHER	VL	VL	VL
Ansar	M	M	M	Arab Salim	L	L	L	Arnoun	VL	VL	VL
Bfaroue	M	M	M	Breyqaah	L	L	L	Charqiyeh	M	M	M
Choukine	VL	VL	VL	Deir El Zahrani	M	M	M	Doueir El-Nabatiyeh	M	M	M
Habbouch El-Nabatiye	L	L	L	Hamra El-Nabatiyeh	VL	VL	VL	Harouf El-Nabatiyeh	ML	ML	ML
Hmaile	ML	ML	ML	Houmin El Faouqa	L	L	L	Houmin El Tahta	M	M	M
Jarjough	VL	VL	VL	Jbaah El-Nabatiyeh	L	L	L	Jebchit	L	L	L
Kfar Djal El-Nabatiy	VL	VL	VL	Kfar Remmane	VL	VL	VL	Kfar Sir	VL	VL	VL
Kfar Tebnit	VL	VL	VL	Kfarfila	L	L	L	Kfour El-Nabatieh	M	M	M
Mayfadoun	VL	VL	VL	Mazraat Bsaffour	M	M	M	Mazraat Chalbaal	M	M	M
Mazraat Dmoul	ML	ML	ML	Mazraat El Khreibeh	M	M	M	Mazraat El-Bayad El-	L	L	L
Mazraat Kfarjaouz	L	L	L	Mazraat Qalaat Meiss	VL	VL	VL	Nabatiyeh El-Fawka	VL	VL	VL
Nabatiyeh Et-Tahta	L	L	L	Namiriyeh	M	M	M	Qaaqaaiyet El Jisr	VL	VL	VL
Qossabeh El-Nabatiy	VL	VL	VL	Roumine	M	M	M	Sarba El-Nabatieh	M	M	M
Sir El-Gharbiyeh	VL	VL	VL	Toul	M	M	M	Yehmor El-Nabatiyeh	VL	VL	VL
Zaoutar El Charqiyeh	VL	VL	VL	Zaoutar El-Gharbiyeh	VL	VL	VL	Zebdine El-Nabatiyeh	L	L	L
Zefta	M	M	M								

### Hasbaiya

Municipality	22-Feb	23-Feb	24-Feb	Municipality	22-Feb	23-Feb	24-Feb	Municipality	22-Feb	23-Feb	24-Feb
Aain Jarfa	VL	VL	VL	Abou Qamha	VL	VL	VL	Ain Qania	VL	VL	VL
Bourghos	VL	VL	VL	Chebaa	VL	VL	VL	Chouaya Hasbaya	VL	VL	VL
Dellafeh	L	L	L	Fardiss Hasbaiya	VL	VL	VL	Hasbaya	L	L	L
Hbariyeh	VL	VL	VL	Kaoukaba Hasbaiya	VL	VL	VL	Kfar Chouba	VL	VL	VL
Kfar Hamam	VL	VL	VL	Kfeir El-Zait	VL	VL	VL	Khalwat Hasbaya	VL	VL	VL
Khreibet Hasbaiya	VL	VL	VL	Majidiyeh Hasbaiya	VL	VL	VL	Marj Ez-Zhour (Haouc	L	L	L
Meri	VL	VL	VL	Mimass	VL	VL	VL	Rachaiya El-Fokhar	VL	VL	VL
Salaiyeb	VL	VL	VL								

### Marjayoun

Municipality	22-Feb	23-Feb	24-Feb	Municipality	22-Feb	23-Feb	24-Feb	Municipality	22-Feb	23-Feb	24-Feb
Aalmane Marjaayoun	VL	VL	VL	Aamra	VL	VL	VL	Adayseh Marjaayoun	VL	VL	VL
Adchit El-Koussair	VL	VL	VL	Ain Aarab Marjaayoun	VL	VL	VL	Bani Haiyann	VL	VL	VL
Blatt Marjaayoun	VL	VL	VL	Blida	VL	VL	VL	Borj El-Moulouk	VL	VL	VL
Boueyda Marjaayoun	VL	VL	VL	Deir Mimass	VL	VL	VL	Deir Siriane	VL	VL	VL
Dibbine	VL	VL	VL	Ebel El Saqi	VL	VL	VL	Houla	VL	VL	VL
Houra	VL	VL	VL	Kfar Kila	VL	VL	VL	Khiam Marjaayoun	VL	VL	VL

Klayaa	VL	VL	VL	Majdel Selem	VL	VL	VL	Marjaayoun	VL	VL	VL
Markaba	VL	VL	VL	Mays El-Jabal	VL	VL	VL	Mazraat Doumiat	VL	VL	VL
Mazraat Sarada	VL	VL	VL	Mhaibib	VL	VL	VL	Qabrikha	VL	VL	VL
Qantara	VL	VL	VL	Rab El-Thalathine	VL	VL	VL	Saouaneh Marjayoun	VL	VL	VL
Talloussa	VL	VL	VL	Taybeh Matjaayoun	VL	VL	VL	Touline	VL	VL	VL

## Bent Jbail

Municipality	22-Feb	23-Feb	24-Feb	Municipality	22-Feb	23-Feb	24-Feb	Municipality	22-Feb	23-Feb	24-Feb
Ain-Ebel	VL	VL	VL	Aitaroun	VL	VL	VL	Aynata Bint Jbeil	VL	VL	VL
Ayta El-Chaeb	VL	VL	VL	Ayta El-Jabal	VL	VL	VL	Beit Lif	VL	VL	VL
Beit Yahoun	VL	VL	VL	Bint Jbeil	VL	VL	VL	Borj Qalaway	VL	VL	VL
Braachit	VL	VL	VL	Chakra	VL	VL	VL	Debel	VL	VL	VL
Deir Antar	VL	VL	VL	Froun	VL	VL	VL	Ghandouriyeh Bint Jb	VL	VL	VL
Hanine	VL	VL	VL	Hariss	VL	VL	VL	Hdatha	VL	VL	VL
Jmeymeh	VL	VL	VL	Kafra Bint Jbeil	VL	VL	VL	Kfar Dounine	VL	VL	VL
Khirbet Selm	VL	VL	VL	Kounine	VL	VL	VL	Maroun El Ras	VL	VL	VL
Qalaway	VL	VL	VL	Qaouzah	VL	VL	VL	Qatmoun	VL	VL	VL
Ramya Bint Jbeil	VL	VL	VL	Rchaf	VL	VL	VL	Rmeich	VL	VL	VL
Safad Al Battikh	VL	VL	VL	Salhaneh	VL	VL	VL	Serbine	VL	VL	VL
Sultanieh Bint Jbeil	VL	VL	VL	Tibnine	VL	VL	VL	Tiri	VL	VL	VL
Yaroun	VL	VL	VL	Yater	VL	VL	VL				

## Mont Liban

### Jbail

Municipality	22-Feb	23-Feb	24-Feb	Municipality	22-Feb	23-Feb	24-Feb	Municipality	22-Feb	23-Feb	24-Feb
Aabeydat	VL	VL	VL	Aalita	VL	VL	VL	Aamchit	VL	VL	VL
Aarab El-Lahib	VL	VL	VL	Aarasta	VL	VL	VL	Adonis Jbeil	VL	VL	VL
Afqa Jbeil	VL	VL	VL	Ain El Delbeh Jbeil	VL	VL	VL	Ain El-Ghouayba	VL	VL	VL
Ain Jrain	VL	VL	VL	Ain Kfah	VL	VL	VL	Almat El Chemaliyat	VL	VL	VL
Almat El-Jenoubiya	VL	VL	VL	Aqoura	L	L	L	Bayzoun	VL	VL	VL
Bchille Jbeil	VL	VL	VL	Bechtlida	VL	VL	VL	Behdaydat	VL	VL	VL
Beit Habbaq	VL	VL	VL	Bejjeh	VL	VL	VL	Bekhaaz	VL	VL	VL
Berbara Jbeil	VL	VL	VL	Bintael	VL	VL	VL	Birket Hjoula	VL	VL	VL
Blatt Jbeil	VL	VL	VL	Boulhos	VL	VL	VL	Breyj Jbeil	VL	VL	VL
Chamat	VL	VL	VL	Chikhane	VL	VL	VL	Chmout	VL	VL	VL
Eddeh Jbeil	VL	VL	VL	Ehmej	VL	VL	VL	Fatre	VL	VL	VL
Ferhet	VL	VL	VL	Fghal	VL	VL	VL	Frat	VL	VL	VL
Ghabat	VL	VL	VL	Ghalboun	VL	VL	VL	Gharzouz	VL	VL	VL
Ghofrine	VL	VL	VL	Habil	VL	VL	VL	Halate	VL	VL	VL
Haqel	VL	VL	VL	Hbaline	VL	VL	VL	Hboub	VL	VL	VL
Hdeine	VL	VL	VL	Hema Er-Rehban	VL	VL	VL	Hema Mar Maroun Aann	VL	VL	VL
Hjoula	VL	VL	VL	Hosrayel	VL	VL	VL	Hsarat	VL	VL	VL
Hsoun	VL	VL	VL	Jaj	VL	VL	VL	Janne	VL	VL	VL
Jbeil	VL	VL	VL	Jeddeyeh Jbeil	VL	VL	VL	Jlisse	VL	VL	VL
Jouret El-Qattine	VL	VL	VL	Kfar Baal Annaya	VL	VL	VL	Kfar Kidde	VL	VL	VL
Kfar Kouas	VL	VL	VL	Kfar Mashoun	VL	VL	VL	Kfoun	VL	VL	VL

Kharbe Jbeil	VL	VL	VL	Laqlouq	VL	VL	VL	Lassa	VL	VL	VL
Lehfed	VL	VL	VL	Maad	VL	VL	VL	Mar Sarkis	VL	VL	VL
Mastita	VL	VL	VL	Mayfouq	VL	VL	VL	Mazraat El Siyad	VL	VL	VL
Mazraat El-Maaden	VL	VL	VL	Mechane	VL	VL	VL	Mechmech Jbeil	VL	VL	VL
Mehrin	VL	VL	VL	Mejdel El-Akoura	L	L	L	Mghayreh Jbeil	L	L	L
Mounsef	VL	VL	VL	Nahr Ibrahim	VL	VL	VL	Qahmez	VL	VL	VL
Qartaba	VL	VL	VL	Qartaboun	VL	VL	VL	Qattara Jbeil	VL	VL	VL
Qorqraya	VL	VL	VL	Ramout	VL	VL	VL	Ras Osta	VL	VL	VL
Rihane Jbeil	VL	VL	VL	Sakiet El-Khayt	VL	VL	VL	Saqi Richmaya	VL	VL	VL
Sebrine	VL	VL	VL	Seraita	VL	VL	VL	Souane Jbeil	VL	VL	VL
Tadmor	VL	VL	VL	Tartej	VL	VL	VL	Torzaiya	VL	VL	VL
Yanouh Jbeil	L	L	L	Zibidine Jbeil	VL	VL	VL				

## El Metn

Municipality	22-Feb	23-Feb	24-Feb	Municipality	22-Feb	23-Feb	24-Feb	Municipality	22-Feb	23-Feb	24-Feb
Aain El-Qabu	VL	VL	VL	Aain El-Qach	VL	VL	VL	Aain El-Teffaha	VL	VL	VL
Aain el-Safssaf El-M	VL	VL	VL	Abou Mizane	VL	VL	VL	Ain Aar	VL	VL	VL
Ain Alaq	VL	VL	VL	Ain El-Kharroube	VL	VL	VL	Ain El-Sendiane	VL	VL	VL
Ain El-Zeitoune	VL	VL	VL	Ain Saadeh	L	L	L	Aintoura El-Matn	VL	VL	VL
Amaret Chalhoub	M	M	M	Antelias	L	L	L	Atchaneh	VL	VL	VL
Ayroun	VL	VL	VL	Baabdat	VL	VL	VL	Baouchariyeh	M	M	M
Baskinta	VL	VL	VL	Beit Chabab	VL	VL	VL	Beit El-Chaar	VL	VL	VL
Beit El-Kekko	VL	VL	VL	Beit Mery	L	L	L	Bhersaf	VL	VL	VL
Bikfaya	VL	VL	VL	Biyakout	VL	VL	VL	Bnabil	VL	VL	VL
Bourj Hammoud	M	M	M	Bqennaya	VL	VL	VL	Broummana El-Matn	VL	VL	VL
Bsalim	VL	VL	VL	Bsifrine	VL	VL	VL	Bteghrine	VL	VL	VL
Chaouiye	VL	VL	VL	Chouaya El-Matn	VL	VL	VL	Choueir	VL	VL	VL
Chrine	VL	VL	VL	Dahr El Sawan El-Mat	VL	VL	VL	Daychouniyeh	L	L	L
Dbayeh	L	L	L	Deir Chamra	VL	VL	VL	Deir Mar Abda el Mch	VL	VL	VL
Deir Mar Roukouz	ML	ML	ML	Deir Tamiche	VL	VL	VL	Dik El-Mehdi	VL	VL	VL
Dikwaneh	M	M	M	Douar El-Matn	VL	VL	VL	Fanar	ML	ML	ML
Fraike	VL	VL	VL	Haret El-Ballaneh	VL	VL	VL	Hbous	VL	VL	VL
Himlaya	VL	VL	VL	Jal El Did	L	L	L	Jdeideh El-Metn	ML	ML	ML
Jouar El-Matn	VL	VL	VL	Jouret El-Ballout	VL	VL	VL	Kaaqour	VL	VL	VL
Kfar Aaqab	VL	VL	VL	Kfertay El-Matn	VL	VL	VL	Khenchara	VL	VL	VL
Khillet El-Mtain	VL	VL	VL	Konnabat Broummana	VL	VL	VL	Konnabat Salima	VL	VL	VL
Machraah El-Matn	VL	VL	VL	Majdel Tarchich	VL	VL	VL	Majzoub	VL	VL	VL
Mansouriyeh El-Metn	L	L	L	Mar Boutros Karm Et-	VL	VL	VL	Mar Chaya et Mzekke	VL	VL	VL
Mar Moussa Ed-Douar	VL	VL	VL	Marjaba	VL	VL	VL	Masqa	VL	VL	VL
Mayasse	VL	VL	VL	Mazraat Deir Aoukar	L	L	L	Mazraat El-Hadirat	VL	VL	VL
Mazraat Yachouh	VL	VL	VL	Mchikha	VL	VL	VL	Menqlet Mezher	VL	VL	VL
Mhaydseh Matn	VL	VL	VL	Mkalles	M	M	M	Mrouj	VL	VL	VL
Mtain	VL	VL	VL	Mtayleb	VL	VL	VL	Nabay	VL	VL	VL
Naccache	L	L	L	Ouadi Chahine	VL	VL	VL	Ouadi El-Karm El-Mat	VL	VL	VL
Ouata El-Mrouj	VL	VL	VL	Ouyoun El-Matn	VL	VL	VL	Qornet Chehwan	VL	VL	VL
Qornet El-Hamra	VL	VL	VL	Roumieh	VL	VL	VL	Sfeilet Bikfaya	VL	VL	VL
Sinn El-Fil	M	M	M	Zabbougha	VL	VL	VL	Zalqa	L	L	L

Zarououn	VL	VL	VL	Zekrite	VL	VL	VL	Zighrine El-Matn	VL	VL	VL
Zouk El-Khrab	VL	VL	VL								

## Chouf

Municipality	22-Feb	23-Feb	24-Feb	Municipality	22-Feb	23-Feb	24-Feb	Municipality	22-Feb	23-Feb	24-Feb
Aalmane El-Chouf	M	M	M	Aammiq El-Chouf	VL	VL	VL	Ain Ouzein	VL	VL	VL
Ain Qani	VL	VL	VL	Ain Zhalta	VL	VL	VL	Ainbal	VL	VL	VL
Amatour	VL	VL	VL	Anout	VL	VL	VL	Atrine	VL	VL	VL
Baadarane	VL	VL	VL	Baaqline	VL	VL	VL	Baasir	L	L	L
Barja	L	L	L	Barouk	VL	VL	VL	Bater	VL	VL	VL
Batloun	VL	VL	VL	Bayqoun	VL	VL	VL	Bchetfine	VL	VL	VL
Beiteddine	VL	VL	VL	Benouati Ech-Chouf	VL	VL	VL	Berjein	VL	VL	VL
Bireh et Mtalleh	VL	VL	VL	Biret El-Chouf	VL	VL	VL	Bkechtine Ouel Mchei	VL	VL	VL
Bkifa El-Chouf	VL	VL	VL	Botme	VL	VL	VL	Bqaiaa Ech-Chouf	VL	VL	VL
Bsaba El-Chouf	VL	VL	VL	Chammis El-Chouf	VL	VL	VL	Chehim	VL	VL	VL
Chemaarine	VL	VL	VL	Chourit	VL	VL	VL	Daher El-Chouf	VL	VL	VL
Dalhoun	L	L	L	Damour	VL	VL	VL	Daraya El-Chouf	VL	VL	VL
Deir El-Moukhalles	VL	VL	VL	Deir Baba	VL	VL	VL	Deir Dourit	VL	VL	VL
Deir El-Qamar	VL	VL	VL	Deir Kouche	VL	VL	VL	Dibbieh	VL	VL	VL
Dmit	VL	VL	VL	Fouara Jaafar	VL	VL	VL	Fraidis El-Chouf	VL	VL	VL
Ghabet Jaafar	VL	VL	VL	Gharife	VL	VL	VL	Haret Jandal	VL	VL	VL
Hasrout	VL	VL	VL	Jadra	M	M	M	Jahlieh	VL	VL	VL
Jbeih El-Chouf	VL	VL	VL	Jdeidet El-Chouf	VL	VL	VL	Jiyeh	L	L	L
Jleilyeh	VL	VL	VL	Jmailiyeh	M	M	M	Joun	ML	ML	ML
Kahlounie El-Chouf	VL	VL	VL	Ketermaya	L	L	L	Kfar Faqoud	VL	VL	VL
Kfar Hamal	VL	VL	VL	Kfar Him	VL	VL	VL	Kfar Katra	VL	VL	VL
Kfar Niss	VL	VL	VL	Kfar hay	VL	VL	VL	Kfarnabrakh	VL	VL	VL
Khirbet Bisri	VL	VL	VL	Knayse El-Chouf	VL	VL	VL	Maaniyeh	L	L	L
Maasser Beiteddine	VL	VL	VL	Maasser El-Chouf	VL	VL	VL	Majdalouna	ML	ML	ML
Majdel El-Meouch	VL	VL	VL	Mazboud	VL	VL	VL	Mazmoura	VL	VL	VL
Mazraat El Chouf	VL	VL	VL	Mazraat El Daher	VL	VL	VL	Mazraat El-Douair	VL	VL	VL
Mechref	VL	VL	VL	Mghairie	L	L	L	Mghayrie El-Chouf	VL	VL	VL
Moukhtara	VL	VL	VL	Mrusti	VL	VL	VL	Mtolle	VL	VL	VL
Naameh	VL	VL	VL	Niha El-Chouf	VL	VL	VL	Ouadi Abou Yousef	VL	VL	VL
Ouadi Ed-Deir	VL	VL	VL	Ouadi El-Sit	VL	VL	VL	Ouadi bnehlay	VL	VL	VL
Qraibeh	VL	VL	VL	Qreiaa	VL	VL	VL	Rmayle El-Chouf	M	M	M
Semqaniyeh	VL	VL	VL	Sibline	M	M	M	Sirjbeil	VL	VL	VL
Warhanieh	VL	VL	VL	Werdaniyeh	M	M	M	Zaarourieh	VL	VL	VL

## Baabda

Municipality	22-Feb	23-Feb	24-Feb	Municipality	22-Feb	23-Feb	24-Feb	Municipality	22-Feb	23-Feb	24-Feb
Abadiyeh	VL	VL	VL	Ain Mouaffaq	VL	VL	VL	Araiya	VL	VL	VL
Arbaniyeh	VL	VL	VL	Arsoun	VL	VL	VL	Baabda	L	L	L
Baalchmey	VL	VL	VL	Bmaryam	VL	VL	VL	Bourj El-Brajneh	M	M	M
Boutchay	VL	VL	VL	Bsaba Baabda	VL	VL	VL	Btekhney	VL	VL	VL
Btibyat	VL	VL	VL	Bzbedine	VL	VL	VL	Chbeniyeh	VL	VL	VL
Chiyah	M	M	M	Chmeisset Baabda	VL	VL	VL	Chouit	VL	VL	VL
Deir El-harf	VL	VL	VL	Deir Khouna	VL	VL	VL	Dlaybeh	VL	VL	VL

Falougha	VL	VL	VL	Furn El-Chebbak	M	M	M	Hadath Beyrouth	ML	ML	ML
Halaliyeh Baabda	VL	VL	VL	Hammana	VL	VL	VL	Haret El Sett	VL	VL	VL
Haret Hamze	VL	VL	VL	Haret Hreik	M	M	M	Hasbaiya El-Metn	VL	VL	VL
Jouar El-Hoz	VL	VL	VL	Jouret Arsoun	VL	VL	VL	Kfar Chima	VL	VL	VL
Kfar Selouane	VL	VL	VL	Khalouat Baabda	VL	VL	VL	Kneisset Baabda	VL	VL	VL
Laylakeh	ML	ML	ML	Louayzeh Baabda	L	L	L	Merdache	VL	VL	VL
Mzairaa Baabda	VL	VL	VL	Ouadi Chahrour El Ol	VL	VL	VL	Ouadi Chahrour El So	VL	VL	VL
Qalaa Baabda	VL	VL	VL	Qhraybe Baabda	VL	VL	VL	Qobbayaa	VL	VL	VL
Qornayel	VL	VL	VL	Qortada	VL	VL	VL	Qrayeh Baabda	VL	VL	VL
Qsaibeh Baabda	VL	VL	VL	Qtale Baabda	VL	VL	VL	Ras El Metn	VL	VL	VL
Ras El-Haref	VL	VL	VL	Rouayset El-Ballout	VL	VL	VL	Salima Baabda	VL	VL	VL
Tahouitat El Ghadir	L	L	L	Tarchich	VL	VL	VL	Zandouqa	VL	VL	VL

## Aley

Municipality	22-Feb	23-Feb	24-Feb	Municipality	22-Feb	23-Feb	24-Feb	Municipality	22-Feb	23-Feb	24-Feb
Abey	VL	VL	VL	Aghmid	VL	VL	VL	Ain Dara	VL	VL	VL
Ain Drafil	VL	VL	VL	Ain El Halazoun	VL	VL	VL	Ain El-Rmmaneh	VL	VL	VL
Ain Jedideh	VL	VL	VL	Ain Ksour	VL	VL	VL	Ain Onoub	VL	VL	VL
Ain Traz	VL	VL	VL	Ainab	VL	VL	VL	Aley	VL	VL	VL
Aramoun	VL	VL	VL	Aytat	VL	VL	VL	Azouniyeh	VL	VL	VL
Baawerta	VL	VL	VL	Badghan Oua Wadi Bad	VL	VL	VL	Bassatine	VL	VL	VL
Bayssour	VL	VL	VL	Bchamoun	VL	VL	VL	Bdadoun	VL	VL	VL
Behouara	VL	VL	VL	Bennay	VL	VL	VL	Bhamdoun El-Dayaa	VL	VL	VL
Bhamdoun El-Mhatta	VL	VL	VL	Bkhechtey	VL	VL	VL	Bleibel	VL	VL	VL
Bmakine	VL	VL	VL	Bmehray	VL	VL	VL	Bouzrid	VL	VL	VL
Bserrine	VL	VL	VL	Bsous	VL	VL	VL	Btalloun	VL	VL	VL
Btater	VL	VL	VL	Chanay	VL	VL	VL	Charoun	VL	VL	VL
Chartoun	VL	VL	VL	Chemlane	VL	VL	VL	Choueifat El-Aamrous	VL	VL	VL
Choueifat El-Oumara	VL	VL	VL	Choueifat El-Quoubbe	VL	VL	VL	Dakkoun	VL	VL	VL
Deir Qoubel	VL	VL	VL	Dfoun	VL	VL	VL	Douair El Remmaneh	VL	VL	VL
Ghaboun	VL	VL	VL	Habramoun	VL	VL	VL	Homs Oua Hama	VL	VL	VL
Houmal	VL	VL	VL	Jisr El Qadi	VL	VL	VL	Kehaleh	VL	VL	VL
Keyfoun	VL	VL	VL	Kfar Aamey	VL	VL	VL	Kommatyeh	VL	VL	VL
Maasrati	VL	VL	VL	Majdel Baana	VL	VL	VL	Mansourieh et Ain El	VL	VL	VL
Mazraat El-Nahr	VL	VL	VL	Mchakhte	VL	VL	VL	Mecherfeh	VL	VL	VL
Mejdlaya	VL	VL	VL	Mrayjat	VL	VL	VL	Ramliyah	VL	VL	VL
Rechmaya	VL	VL	VL	Rejmeh	VL	VL	VL	Remhala	VL	VL	VL
Rouaysset El Neemane	VL	VL	VL	Saoufar	VL	VL	VL	Selfaya	VL	VL	VL
Sirhmoul	VL	VL	VL	Souq El Ghareb	VL	VL	VL	Taazanieh	VL	VL	VL

## Kesrouane

Municipality	22-Feb	23-Feb	24-Feb	Municipality	22-Feb	23-Feb	24-Feb	Municipality	22-Feb	23-Feb	24-Feb
Achkout	VL	VL	VL	Adma Oua Dafneh	VL	VL	VL	Ain Ed-Delbe Kesroua	VL	VL	VL
Ain El-Rihane	VL	VL	VL	Aintoura Kesrouane	VL	VL	VL	Ajaltoun	VL	VL	VL
Akaybeh Kesrouane	VL	VL	VL	Aramoun Kesrouane	VL	VL	VL	Azra ouel Ozor	VL	VL	VL
Ballouneh	VL	VL	VL	Batha	VL	VL	VL	Bekaatat Achkout	VL	VL	VL
Bekaatat Kanaan	VL	VL	VL	Bizhel	VL	VL	VL	Bouar	VL	VL	VL
Bqaatouta	VL	VL	VL	Bqaq Ed-Dine	VL	VL	VL	Bzommar	VL	VL	VL

Chahtoul	VL	VL	VL	Chnaniir	VL	VL	VL	Chouan	VL	VL	VL
Daraya Kesrouane	VL	VL	VL	Darououn	VL	VL	VL	Deir Baqlouch	VL	VL	VL
Dlebta	VL	VL	VL	Eghbeh	VL	VL	VL	Faraya	VL	VL	VL
Fatka	VL	VL	VL	Feytroun	VL	VL	VL	Ghazir	VL	VL	VL
Ghbaleh Kesrouane	VL	VL	VL	Ghedrass	VL	VL	VL	Ghosta	VL	VL	VL
Ghynéh	VL	VL	VL	Harharaya w Kattine	VL	VL	VL	Harissa Kesrouane	VL	VL	VL
Hayata	VL	VL	VL	Hosein	VL	VL	VL	Hrajel	VL	VL	VL
Jdeideh Ghazir	VL	VL	VL	Jeita	VL	VL	VL	Jounieh Ghadir	VL	VL	VL
Jounieh Haret Sakhr	VL	VL	VL	Jounieh Salel Alma	VL	VL	VL	Jounieh Sarba	VL	VL	VL
Jouret Bedrane	VL	VL	VL	Jouret Mhad	VL	VL	VL	Jouret Termos	VL	VL	VL
Kfar Debiane	VL	VL	VL	Kfar Tay Kesrouane	VL	VL	VL	Kfar Yassine	VL	VL	VL
Kfour Kesrouane	VL	VL	VL	Kharayeb Nahr Ibrahi	VL	VL	VL	Klayaat Kesrouane	VL	VL	VL
Maarab	VL	VL	VL	Maaysra Kesrouane	VL	VL	VL	Mayrouba	VL	VL	VL
Mazraat Er-Ras	VL	VL	VL	Mazraat Mrah El-Mir	VL	VL	VL	Mchaa El Ftouh	VL	VL	VL
Mchaa Faraya	VL	VL	VL	Mchaa Kfar Dibiane	VL	VL	VL	Mghaer	VL	VL	VL
Mradiyeh	VL	VL	VL	Nahr Ed-Dahab	VL	VL	VL	Nammoura Kesrouane	VL	VL	VL
Ouata El Jaouz	VL	VL	VL	Ouata Sillam	VL	VL	VL	Raachine	VL	VL	VL
Rayfoun	VL	VL	VL	Safra Kesrouane	VL	VL	VL	Shayle Kesrouane	VL	VL	VL
Tabarja	VL	VL	VL	Yahchouch	VL	VL	VL	Zaaytneh	VL	VL	VL
Zeytoun	VL	VL	VL	Zouk Mikael	VL	VL	VL	Zouk Mosbeh	VL	VL	VL

## Baalbek\_Hermel

### Baalbek

Municipality	22-Feb	23-Feb	24-Feb	Municipality	22-Feb	23-Feb	24-Feb	Municipality	22-Feb	23-Feb	24-Feb
Aadous	VL	VL	VL	Aamchki	M	M	M	Aarsal	L	L	L
Ain Baalbek	M	M	M	Ain Bourday	ML	ML	ML	Ain El-Benye	M	M	M
Ain El-Jaouz Baalbek	ML	ML	ML	Ain El-Siya Chadoura	M	M	M	Al Khodr Baalbek	VL	VL	VL
Al Nabi Chit	VL	VL	VL	Aynata Baalbek	L	L	L	Baalbek	L	L	L
Bachwat	VL	VL	VL	Barqa	VL	VL	VL	Bednayeel Baalbak	L	L	L
Beit Chama	VL	VL	VL	Bijjaje	ML	ML	ML	Bouday	L	L	L
Brital	L	L	L	Btadi	VL	VL	VL	Chaat	L	L	L
Chaibe	M	M	M	Chlifa	VL	VL	VL	Chmestar	L	L	L
Dar El-Oussa	VL	VL	VL	Deir El-Ahmar	VL	VL	VL	Deir Mar Maroun Baal	VL	VL	VL
Douris	L	L	L	Fakiha	ML	ML	ML	Hadath Baalbek	L	L	L
Ham	M	M	M	Haour Taala	L	L	L	Hizzine	VL	VL	VL
Hlebta	L	L	L	Hosh Barada	VL	VL	VL	Hosh El Dahab	VL	VL	VL
Hosh El Snid	VL	VL	VL	Hosh El-Nabi	VL	VL	VL	Hosh El-Rafiq	VL	VL	VL
Hosh Tal Safiya	VL	VL	VL	Hrebta	ML	ML	ML	laat	VL	VL	VL
Jebaa	VL	VL	VL	Jenta	VL	VL	VL	Kfar Dabach	VL	VL	VL
Kfar Dane	VL	VL	VL	Khraibeh El-Hermel	ML	ML	ML	Khreibet Baalbek	L	L	L
Kneisset Baalbek	VL	VL	VL	Labueh	ML	ML	ML	Maarboun	ML	ML	ML
Majdaloun	VL	VL	VL	Maqneh	L	L	L	Mazraat Beit Mcheik	ML	ML	ML
Misraya	VL	VL	VL	Mograq	M	M	M	Nabha El-Damdoum	L	L	L
Nabi Chbay	M	M	M	Nabi Osman	ML	ML	ML	Nahleh baalbek	M	M	M
Ouadi El-Oss	L	L	L	Qaa Baayoun	VL	VL	VL	Qaa Jouar Maqiye	VL	VL	VL
Qaa Ouadi El-Khanzir	VL	VL	VL	Qah Baalbek	VL	VL	VL	Qarha Baalbek	VL	VL	VL



Qsarnaba	VL	VL	VL	Ram Baalbek	VL	VL	VL	Ras Baalbek El Sahl	L	L	L
Ras Baalbek El-Charq	VL	VL	VL	Riha	VL	VL	VL	Saaide	VL	VL	VL
Sboubba	ML	ML	ML	Seriine El-Tahta	VL	VL	VL	Slouqi	ML	ML	ML
Taiba Baalbek	L	L	L	Talia	VL	VL	VL	Taraiya	L	L	L
Temnin El Fawqa	VL	VL	VL	Temnin El-Tahta	VL	VL	VL	Tfail	L	L	L
Yahfoufa	VL	VL	VL	Yammouneh	L	L	L	Younine	M	M	M
Zboud	M	M	M								

## Hermel

Municipality	22-Feb	23-Feb	24-Feb	Municipality	22-Feb	23-Feb	24-Feb	Municipality	22-Feb	23-Feb	24-Feb
Charbine El-Hermel	L	L	L	Hermel Jbab	ML	ML	ML	Hermel	L	L	L
Maaysra El-Hermel	L	L	L	Michaa Mrajhine	L	L	L	Ouadi Faara	L	L	L
Ras Baalbek - Ouadi	L	L	L	Ras Baalbek El Gharb	L	L	L	Zighrine	L	L	L

## Akkar

### Akkar

Municipality	22-Feb	23-Feb	24-Feb	Municipality	22-Feb	23-Feb	24-Feb	Municipality	22-Feb	23-Feb	24-Feb
Aain Tinta	VL	VL	L	Aaiyat	VL	VL	VL	Aakkar El-Aatiqa	VL	VL	VL
Aamar Akkar	VL	VL	VL	Aamar El Baykat	VL	VL	L	Aamayer	VL	VL	VL
Aamriyet Akkar	VL	VL	L	Aandqet	VL	VL	VL	Aarmeh	VL	VL	VL
Aarqa	VL	VL	VL	Aawaynat	VL	VL	VL	Aayoun Akkar	VL	VL	VL
Abboudiye	VL	VL	L	Ain El-Zeit	VL	VL	L	Ain Yaaqoub	VL	VL	VL
Akroum	VL	VL	VL	Aridet Cheikh Zennad	L	L	L	Baldeh w Mazraat Bal	VL	VL	L
Barcha	VL	VL	L	Bardeh	VL	VL	L	Bebnine	VL	VL	VL
Beino	VL	VL	VL	Beit Ayoub	VL	VL	VL	Beit El-Haouch	VL	VL	VL
Beit Mellat	VL	VL	VL	Beit Younes	VL	VL	VL	Berbara Akkar	VL	VL	L
Berqayel	VL	VL	VL	Bezbina	VL	VL	VL	Bireh Akkar	VL	VL	L
Borj	VL	VL	VL	Bqerezla	VL	VL	VL	Bzal	VL	VL	VL
Chane	VL	VL	VL	Chaqdouf	VL	VL	VL	Charbila	VL	VL	L
Cheikh Mohammad	VL	VL	L	Cheikh Taba Es-Sahl	VL	VL	L	Cheikh Taba	VL	VL	L
Cheikh Zennad	L	L	L	Cheikhlar	VL	VL	VL	Chir Hmairine	VL	VL	L
Daghle	VL	VL	L	Dahr Laissine	VL	VL	L	Darine	VL	VL	L
Dawra	VL	VL	VL	Dawsa w Baghdadi	VL	VL	L	Dayret Nahr El-Kabir	VL	VL	L
Deir Dalloum	VL	VL	VL	Deir Jennine	VL	VL	L	Denbou	VL	VL	VL
Dibbabiyyeh	VL	VL	L	Douair Aadwiyeh	VL	VL	L	Fassikine	VL	VL	L
Fnaydek	VL	VL	VL	Fraydes Akkar	VL	VL	L	Ghazayle	VL	VL	L
Habchit	VL	VL	VL	Hakour	VL	VL	VL	Halba	VL	VL	L
Haouchab	VL	VL	L	Hayssat	VL	VL	VL	Haytla	VL	VL	L
Hayzouq	VL	VL	L	Hedd	VL	VL	L	Hmaira Akkar	VL	VL	VL
Hmaiss Akkar	VL	VL	L	Hnaider	L	L	L	Hokr Ed-Dahri	VL	VL	L
Hokr Etti	VL	VL	L	Hokr Jouret Srar	VL	VL	L	Houaich	VL	VL	VL
Hrar	VL	VL	VL	Idbil	VL	VL	L	Ilal	VL	VL	VL
Janine	VL	VL	L	Jdeidet El-Joumeh	VL	VL	L	Jdeidet El-Kaiteh	VL	VL	VL
Jebayel	VL	VL	VL	Kafr	VL	VL	VL	Kafr	VL	VL	L
Karm Asfour	VL	VL	L	Kfar Melki Akkar	VL	VL	VL	Kfar Noun	VL	VL	L
Kfarharra	VL	VL	L	Khalsa	VL	VL	L	Kharnoubet Akkar	VL	VL	L

Khirbet Daoud Aakkar	VL	VL	L	Khirbet El Remmane	VL	VL	VL	Khirbet Shar	VL	VL	L
Khoreybet El-Jindi	VL	VL	L	Khreibet Aakkar	VL	VL	VL	Kneisset Aakkar	VL	VL	VL
Kneisset Hnaider	ML	ML	ML	Knisse	VL	VL	L	Kroum El-Aarab	VL	VL	L
Kwachra	VL	VL	L	Kweykhat	VL	VL	L	Machta Hammoud	VL	VL	VL
Majdala	VL	VL	VL	Majdel Akkar	VL	VL	L	Mar Touma	VL	VL	VL
Marlaya Melhem	VL	VL	VL	Mashha	VL	VL	L	Massoudiye	VL	VL	L
Mazraat Beit Ghattas	VL	VL	VL	Mazraat En-Nahriye	VL	VL	VL	Mechmech	VL	VL	VL
Memneh	VL	VL	VL	Mhammara	VL	VL	VL	Mighraq Aakkar	VL	VL	VL
Minyara	VL	VL	L	Moqayteh	L	L	L	Mounjez	VL	VL	L
Msalla	VL	VL	L	Mzeihmeh	VL	VL	L	Nfaiseh	VL	VL	L
Noura Et-Tahta	VL	VL	L	Ouadi El-Haour	VL	VL	L	Ouadi El-Jamous	VL	VL	VL
Ouyoun El-Ghizlane	VL	VL	VL	Qaabarine	VL	VL	VL	Qabaait	VL	VL	VL
Qachlaq	VL	VL	L	Qantara Aakkar	VL	VL	L	Qarha Aakkar	L	L	L
Qarqaf	VL	VL	VL	Qboula	VL	VL	VL	Qleiaat Aakkar	L	L	L
Qloud El-Baqie	VL	VL	VL	Qobaiyat Aakkar	VL	VL	VL	Qobbat Chamrat	L	L	L
Qorayat	VL	VL	VL	Qornet Aakkar	VL	VL	VL	Qsair Aakkar	VL	VL	L
Rahbe	VL	VL	VL	Rihaniyet Aakkar	VL	VL	L	Rmah	VL	VL	L
Rmoul	L	L	L	Saadine	VL	VL	L	Sadaqa	VL	VL	VL
Saidnaya	VL	VL	L	Sammouniye	VL	VL	L	Sayssouq	VL	VL	VL
Semmaqiye	VL	VL	L	Semmaqli	VL	VL	VL	Sfinet El-Dreib	VL	VL	L
Sfinet El-Qaitaa	VL	VL	VL	Sindyanet Zeidane	VL	VL	L	Souaisset Aakkar	VL	VL	L
Srar	VL	VL	L	Tal Abbas El Gharby	VL	VL	L	Tal Abbas El-Charqy	VL	VL	L
Tal Biret	VL	VL	L	Tal Hmayra	VL	VL	L	Tal Maayan Tal Kiri	VL	VL	VL
Tal Sibel	VL	VL	VL	Tallet Chattaha	VL	VL	VL	Tikrit	VL	VL	VL
Tleil	VL	VL	L	Tshea	VL	VL	VL	Zawarib	VL	VL	L
Zouq El Hosniyeh	VL	VL	VL	Zouq El-Haddara	VL	VL	VL	Zouq El-Hbalsa	VL	VL	VL
Zouq El-Moqachrine	VL	VL	VL								

## Sud

### Sour

Municipality	22-Feb	23-Feb	24-Feb	Municipality	22-Feb	23-Feb	24-Feb	Municipality	22-Feb	23-Feb	24-Feb
Aaiyeh	VL	VL	VL	Aalma El-Chaab	VL	VL	VL	Aaytit	VL	VL	VL
Abbassiyeeh Sour	VL	VL	VL	Abou Chech	VL	VL	VL	Ain Abou Abdallah	VL	VL	L
Ain Baal	VL	VL	VL	Arzoun	VL	VL	VL	Aziyeh	VL	VL	VL
Baflaya	VL	VL	VL	Barich	VL	VL	VL	Batouliyah	VL	VL	VL
Bayad	VL	VL	VL	Bazouriyeh	VL	VL	VL	Bediass	VL	VL	VL
Bestiyat	VL	VL	VL	Borj El Chemali	VL	VL	VL	Borj En-Naqoura	VL	VL	VL
Borj Rahhal	VL	VL	VL	Boustane	VL	VL	VL	Btaychiyah	VL	VL	VL
Chaaitiye	VL	VL	VL	Chameh	VL	VL	VL	Chehabiye	VL	VL	VL
Chehour	VL	VL	VL	Chihine	VL	VL	VL	Debaal Sour	VL	VL	VL
Deir Amess	VL	VL	VL	Deir Kifa	VL	VL	VL	Deir Qanoun El-Ain	VL	VL	VL
Deir Qanoun El-Naher	VL	VL	VL	Derdghaiya	VL	VL	VL	Dhayra	VL	VL	VL
Halloussiyeh	VL	VL	VL	Hamoul	VL	VL	VL	Hanaouey	VL	VL	VL
Henniye	VL	VL	VL	Hmairi Sour	VL	VL	VL	Iskandarouna Sour	VL	VL	VL
Jbal El Botom	VL	VL	VL	Jebbin	VL	VL	VL	Jennata	VL	VL	VL
Jijim	VL	VL	VL	Jouaiya	VL	VL	VL	Kneisset Sour	VL	VL	VL

Maarake	VL	VL	VL	Maaroub	VL	VL	VL	Majadel	VL	VL	VL
Majdalzoun	VL	VL	VL	Mansouri Sour	VL	VL	VL	Marnba	VL	VL	VL
Marouahine	VL	VL	VL	Mazraat El-Zalloutiy	VL	VL	VL	Mazraat Mechref	VL	VL	VL
Mazraat Tayr Semhat	VL	VL	VL	Mheilib	VL	VL	VL	Neffakhiyeh	VL	VL	VL
Niha Sour	VL	VL	VL	Ouadi Jilo	VL	VL	VL	Qana	VL	VL	VL
Qolaileh Sour	VL	VL	VL	Rechknayan	VL	VL	VL	Rmadiyah	VL	VL	VL
Selha Sour	VL	VL	VL	Siddiqine	VL	VL	VL	Sour	VL	VL	VL
Srifa	VL	VL	VL	Tayr Debbe	VL	VL	VL	Tayr Felsay	VL	VL	VL
Tayr Harfa	VL	VL	VL	Touayri	VL	VL	VL	Toura	VL	VL	VL
Yanouh Sour	VL	VL	VL	Yarine	VL	VL	VL	Zebqine	VL	VL	VL

## Saida

Municipality	22-Feb	23-Feb	24-Feb	Municipality	22-Feb	23-Feb	24-Feb	Municipality	22-Feb	23-Feb	24-Feb
Aanqoun	M	M	M	Aaqtanit	M	M	M	Aarab Ej-Jall	M	M	M
Aarab Tabbaya	M	M	M	Abra Saida	M	M	M	Adloun	M	M	M
Adousiyeh	M	M	M	Ain-El-Deleb	M	M	M	Arzai	L	L	L
Babliyah	M	M	M	Barty	ML	ML	ML	Bissariyeh	M	M	M
Bnaafoul	M	M	M	Bqosta	M	M	M	Bramiy	M	M	M
Daoudiyeh	M	M	M	Dareb El-Sim	M	M	M	Erkay	M	M	M
Ghassanieh	M	M	M	Ghazieh	M	M	M	Hajjeh	M	M	M
Haret Saida	M	M	M	Hartiyeh	M	M	M	Hlaliye Saida	M	M	M
Insariyat	M	M	M	Jazira Saida	VL	VL	L	Kafar Bit	M	M	M
Kaoutariyet El-Siyad	M	M	M	Kfar Chellal	M	M	M	Kfar Hatta Saida	M	M	M
Kfar Milke Saida	M	M	M	Khartoum	M	M	M	Khaziz	M	M	M
Khirbet Ed-Douair Sa	M	M	M	Khirbet El-Bassal	M	M	M	Khrayeb Saida	L	L	L
Loubieh	M	M	M	Maghdouche	M	M	M	Majdelyoun	M	M	M
Matariyet El-Choumar	VL	VL	VL	Matayriyeh	M	M	M	Mazraat 'Mseileh	M	M	M
Mazraat 'Snaiber	M	M	M	Mazraat Aarab Soukka	M	M	M	Mazraat Deir Taqla	M	M	M
Mazraat El Yahoudiye	L	L	ML	Mazraat El-Housseini	M	M	M	Mazraat El-Mhaydaleh	M	M	M
Mazraat El-Ouasta	L	L	L	Mazraat Jamjim	L	L	L	Mazraat Kaoutariyet	M	M	M
Mazraat Kfar Badda	L	L	L	Mazraat Oussamiyat	M	M	M	Mazraat Sari	M	M	M
Mazraat Sinai	M	M	M	Meemariyeh	M	M	M	Merouaniyeh	M	M	M
Miyeh ou Miyeh	M	M	M	Najjariyeh	M	M	M	Qaaqaiyat El-Snaouba	M	M	M
Qnarit	M	M	M	Qraiye Saida	M	M	M	Saida Ed-Dekermane	M	M	M
Saida El-Oustani	M	M	M	Saida El-Qadimeh	M	M	M	Saida Kefraya	M	M	M
Saksakiyeh	M	M	M	Salhigh Saida	M	M	M	Sarafand	M	M	M
Sfenta	ML	ML	ML	Tafahta	M	M	M	Tanbourit	M	M	M
Tebna	M	M	M	Zaghdraiya	M	M	M	Zeita	M	M	M
Zrariyeh	L	L	L								

## Jezzine

Municipality	22-Feb	23-Feb	24-Feb	Municipality	22-Feb	23-Feb	24-Feb	Municipality	22-Feb	23-Feb	24-Feb
Ain El-Mir (El Estab	M	M	M	Anane	L	L	L	Aramta	VL	VL	VL
Ariya	VL	VL	VL	Aychiyeh	VL	VL	VL	Azour	VL	VL	VL
Baba	VL	VL	VL	Bayssour Jezzine	M	M	M	Benoueteh Jezzine	VL	VL	VL
Bhannine	VL	VL	VL	Bisri	VL	VL	VL	Bkassine	VL	VL	VL
Bouslaya	VL	VL	VL	Btedine El-Leqech	VL	VL	VL	Chbail	VL	VL	VL
Choualiq Jezzine	M	M	M	Dahr Ed-Deir	VL	VL	VL	Deir El Qattine	VL	VL	VL

Demachqiyeh	VL	VL	VL	Ghabbatiyeh	VL	VL	VL	Harf Jezzine	VL	VL	VL
Hassaniyeh	M	M	M	Haytouleh	M	M	M	Haytura	VL	VL	VL
Hidab	VL	VL	VL	Homsiyeh	VL	VL	VL	Jabal Toura	VL	VL	VL
Jarmaq	VL	VL	VL	Jensnaya	M	M	M	Jernaya	M	M	M
Jezzine	VL	VL	VL	Karkha	M	M	M	Kfar Falous	M	M	M
Kfar Houna	L	L	L	Kfar Jarrah	M	M	M	Lebaa	M	M	M
Louayzet Jezzine	VL	VL	VL	Machmouche	VL	VL	VL	Mahmoudiyeh Jezzine	VL	VL	VL
Maknounye Jezzine	VL	VL	VL	Maraat Ouazaiyeh	VL	VL	VL	Mazraat Daraya	VL	VL	VL
Mazraat El-Aarqoub	VL	VL	VL	Mazraat El-Mathane	VL	VL	VL	Mazraat El-Rahbane	VL	VL	VL
Mazraat Khallet Khaz	VL	VL	VL	Mazraat Louzid (Loua	VL	VL	VL	Mazraat Qrouh	VL	VL	VL
Mazraat Tamra	VL	VL	VL	Mazraat Zighrine Jez	VL	VL	VL	Mazraat	VL	VL	VL
Mharbiyeh	M	M	M	Midane Jezzine	VL	VL	VL	Mjeydel Jezzine	M	M	M
Mliikh	VL	VL	VL	Mrah El-Hbasse	M	M	M	Ouadi Baanqoudaine	M	M	M
Ouadi El-Laymoun	M	M	M	Ouardiyeh	VL	VL	VL	Qabaa Jezzine	VL	VL	VL
Qatrani	VL	VL	VL	Qaytouleh	VL	VL	VL	Qtaleh Jezzine	L	L	L
Rihane Jezzine	VL	VL	VL	Rimat	L	L	L	Roum	VL	VL	VL
Roummanet	VL	VL	VL	Sabbah	VL	VL	VL	Saydoun	VL	VL	VL
Sfaray	L	L	L	Snaya	VL	VL	VL	Sojoud	VL	VL	VL
Srayri	VL	VL	VL	Taaid	VL	VL	VL	Wadi Jezzine	VL	VL	VL
Zhalta	VL	VL	VL								

## Bekaa

### West Bekaa

Municipality	22-Feb	23-Feb	24-Feb	Municipality	22-Feb	23-Feb	24-Feb	Municipality	22-Feb	23-Feb	24-Feb
Aammiq BG	VL	VL	VL	Ain El Tineh BG	L	L	L	Ain Zebdeh	L	L	L
Ana	VL	VL	VL	Aytanit	L	L	L	Baaloul BG	L	L	L
Bab Mareh	L	L	L	Chouberqiye Aammiq	VL	VL	VL	Dakoue	VL	VL	VL
Deir Ain El-Jaouze	L	L	L	Deir Tahniche	VL	VL	VL	Ghaza	VL	VL	VL
Harime El-Soughra	VL	VL	VL	Hoch Harimeh	VL	VL	VL	Jazira BG	VL	VL	VL
Jib Jennine	VL	VL	VL	Kamed-El-Laouz	VL	VL	VL	Kefraya BG	VL	VL	VL
Khiara El Atika	VL	VL	VL	Khiara	VL	VL	VL	Khirbet Qanafar	L	L	L
Lala	VL	VL	VL	Lebbaya BG	ML	ML	ML	Loussa	ML	ML	ML
Machghara	L	L	L	Manara (Hammara) BG	VL	VL	VL	Mansoura BG	VL	VL	VL
Marej BG	VL	VL	VL	Maydoun	ML	ML	ML	Ouaqf BG	VL	VL	VL
Qaraaoun	L	L	L	Qelya	ML	ML	ML	Raouda (Istabel)	VL	VL	VL
Saghbine	L	L	L	Sohmor	L	L	L	Soltan Yacoub el Ara	VL	VL	VL
Souairy	VL	VL	VL	Sultan Yaacoub	VL	VL	VL	Tal Znouh	VL	VL	VL
Yehmor BG	ML	ML	ML	Zilaya	L	L	L				

### Zahle

Municipality	22-Feb	23-Feb	24-Feb	Municipality	22-Feb	23-Feb	24-Feb	Municipality	22-Feb	23-Feb	24-Feb
Aanjar (Haouch Mouss	VL	VL	VL	Ablah	VL	VL	VL	Ain Kfarzabad	VL	VL	VL
Ali-El-Nahri	VL	VL	VL	Bar Elias	VL	VL	VL	Bouarej	VL	VL	VL
Cheberqiyet Tabet	VL	VL	VL	Chtaura	VL	VL	VL	Deir El Ghazal	VL	VL	VL
Delhamiyet Zahle	VL	VL	VL	Ferzol	VL	VL	VL	Haouch El-Ghanam	VL	VL	VL
Haouch Es-Siyadeh	VL	VL	VL	Haouch Hala	VL	VL	VL	Haouch Mandara	VL	VL	VL

Haouch Qayssar	VL	VL	VL	Hezerta	VL	VL	VL	Hosh Moussa	VL	VL	VL
Jdita	VL	VL	VL	Kfarzabad	VL	VL	VL	Ksara	VL	VL	VL
Majdel Aanjar	VL	VL	VL	Makssi	VL	VL	VL	Massa	VL	VL	VL
Mazraat Er-Remtaniye	VL	VL	VL	Mrayjat Zahle	VL	VL	VL	Mzaraa Zahle	VL	VL	VL
Nabi Ayla	VL	VL	VL	Nasriyet Rizk	VL	VL	VL	Nasriyet Zahle	VL	VL	VL
Niha Zahle	VL	VL	VL	Ouadi Ed-Deloum	VL	VL	VL	Ouadi El-Arayech	VL	VL	VL
Qaa El Rim	L	L	L	Qab Elias	VL	VL	VL	Qousaya	VL	VL	VL
Rhit	VL	VL	VL	Riyak	VL	VL	VL	Saadnayel	VL	VL	VL
Taal El-Akhdar	VL	VL	VL	Taalbeya	VL	VL	VL	Taanayel	VL	VL	VL
Talamara	VL	VL	VL	Tcheflik Edde Haouch	VL	VL	VL	Tcheflik Qiqano	VL	VL	VL
Terbol Zahle	VL	VL	VL	Touaite Zahle	VL	VL	VL	Zahle Aradi	VL	VL	VL
Zahle El-Berbara	VL	VL	VL	Zahle El-Maallaqa	VL	VL	VL	Zahle El-Midane	VL	VL	VL
Zahle Er-Rassiyeh	VL	VL	VL	Zahle Haouch El-Ouma	VL	VL	VL	Zahle Haouch El-Ouma	VL	VL	VL
Zahle Haouch Ez-Zara	VL	VL	VL	Zahle Maalaqa Aradi	VL	VL	VL	Zahle Mar Antonios	VL	VL	VL
Zahle Mar Elias	VL	VL	VL	Zahle Mar Gerios	VL	VL	VL	Zahle Saydet En-Naja	VL	VL	VL
Zebdoul	VL	VL	VL								

## Rachaiya

Municipality	22-Feb	23-Feb	24-Feb	Municipality	22-Feb	23-Feb	24-Feb	Municipality	22-Feb	23-Feb	24-Feb
Ain Arab Rachaiya	VL	VL	VL	Ain Ata	L	L	L	Ain Harche	L	L	L
Aqabe Rachaya	VL	VL	VL	Ayha	VL	VL	VL	Ayta El Fokhar	VL	VL	VL
Bakifa Rachaya	VL	VL	VL	Bakka	VL	VL	VL	Beit Lahya	VL	VL	VL
Bireh Rachaiya	VL	VL	VL	Daher El Ahmar	VL	VL	VL	Deir El-Achayer	VL	VL	VL
Heloua Rachaiya	VL	VL	VL	Hoch El Qannabeh Rac	L	L	L	Kaoukaba Bou Arab	VL	VL	VL
Kfar Danis	VL	VL	VL	Kfar Mechki	L	L	L	Kfar Qouq	VL	VL	VL
Kherbet Rouha	VL	VL	VL	Majdel Balhiss	L	L	L	Mdoukha	VL	VL	VL
Mhaydseh Rachaiya	VL	VL	VL	Nabi Safa	L	L	L	Rachaiya	L	L	L
Rafid Rachaiya	VL	VL	VL	Selsata (Mazraat Dei	VL	VL	VL	Tannoura	L	L	L
Yanta	VL	VL	VL								

## Beyrouth

### Beyrouth

Municipality	22-Feb	23-Feb	24-Feb	Municipality	22-Feb	23-Feb	24-Feb	Municipality	22-Feb	23-Feb	24-Feb
Achrafieh	M	M	M	Ain el-Mreisse	ML	ML	ML	Bachoura	M	M	M
Beirut Central Distr	VL	VL	VL	Marfai	L	L	L	Mazraa	M	M	M
Medaouar	M	M	M	Minet el-Hosn	L	L	L	Mwssaitbeh	M	M	M
Ras Beirut	ML	ML	ML	Rmeil	M	M	M	Saifi	L	L	L
Zqaq el-Blat	L	L	L								