

Lebanon Fire Risk Bulletin



CIVIL DEDEFENCE

Refer to cadast table condition.

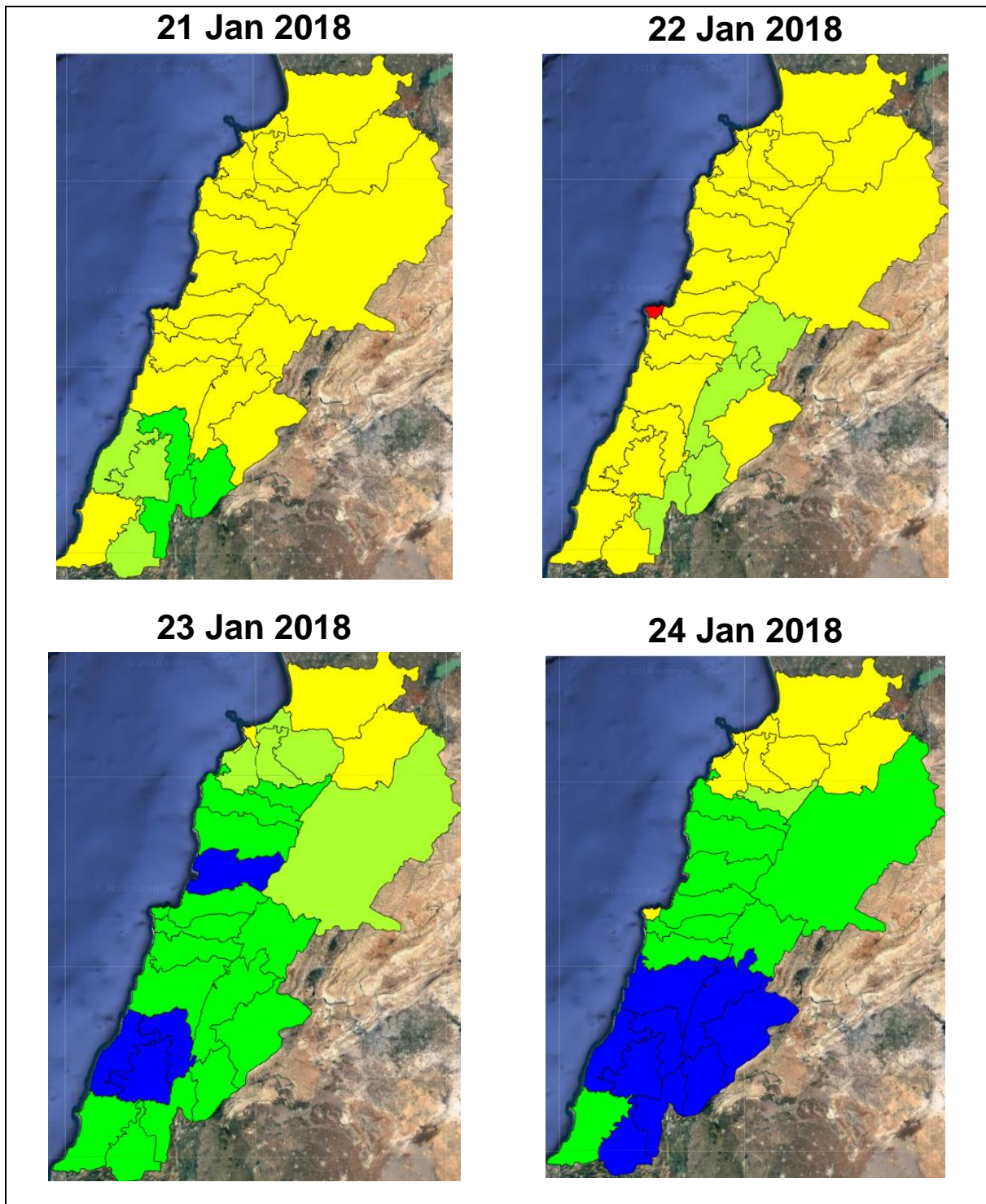
Please note that the indicated temperature is at 2 meters height from the ground.

General description of potential fire risk situation

Symbol	Level of risk	Meaning and actions
VL	Very low	Very low fire risk. Controlled burning operations can be hardly executed due to high fuel moisture content. Normally wildfires self-extinguish.
L	Low	Low fire risk. Controlled burning operations can be executed with a reasonable degree of safety.
ML	Medium low	Medium-low fire risk. Controlled burning operations can be executed in safety conditions. All the fires need to be extinguished.
M	Medium	Medium fire risk. Controlled burning operations would be avoided. All the fires need to be very well extinguished.
M	Medium high	Controlled burning is not recommended. Open flame will start fires. Cured grasslands and forest litter will burn readily. Spread is moderate in forests and fast in exposed areas. Patrolling and monitoring is suggested. Fight fires with direct attack and all available resources.
H	High	Ignition can occur easily with fast spread in grass, shrubs and forests. Fires will be very hot with crowning and short to medium spotting. Direct attack on the head may not be possible requiring indirect methods on flanks. Patrolling and monitoring the territory is highly suggested.
E	Extreme	Ignition can occur also from sparks. Fires will be extremely hot with fast rate of spread. Control may not be possible during day due to long range spotting and crowning. Suppression forces should limit efforts to limiting lateral spread. Damage potential total. Patrolling and monitoring the territory is highly suggested.

Beirut, 22 January 2018

FIRE RISK INDEX

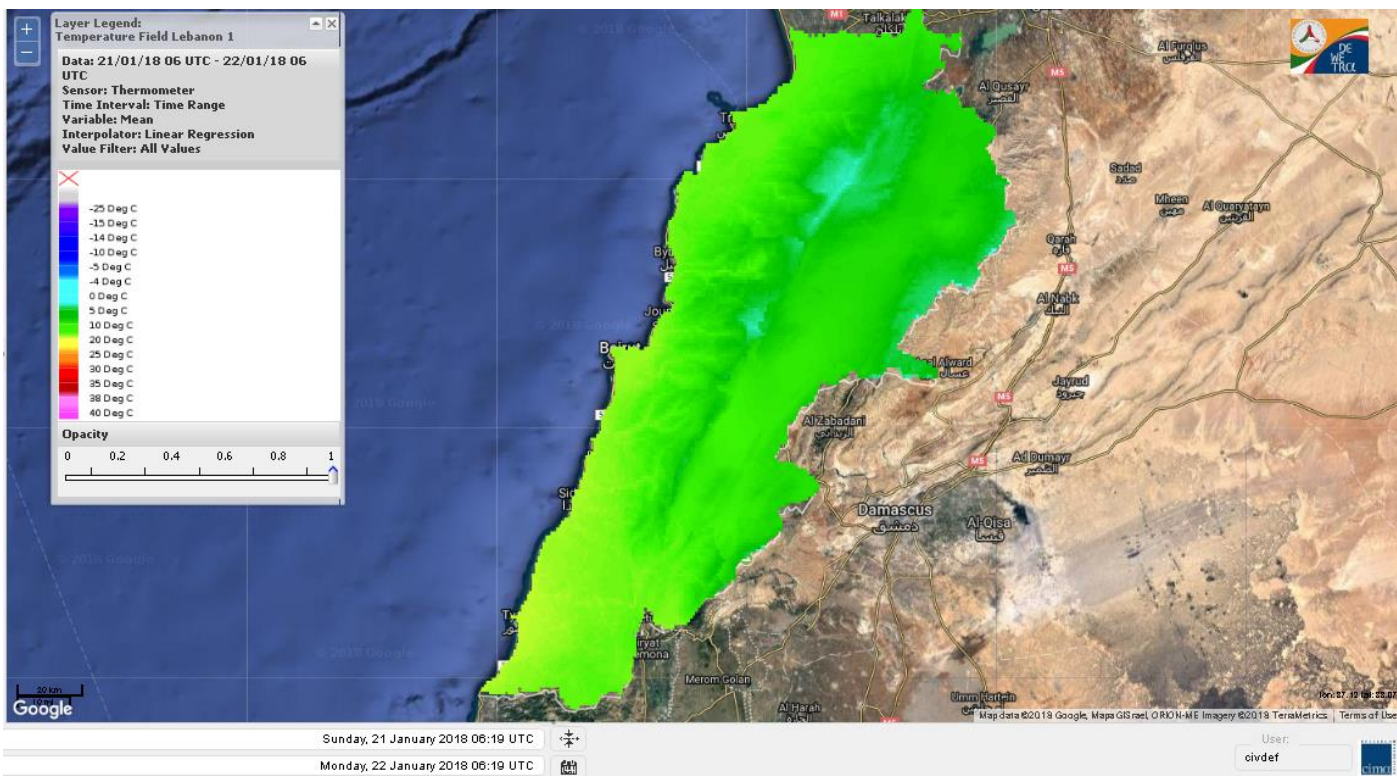


Layer Legend:
Lebanon Wildfire Risk Index 1

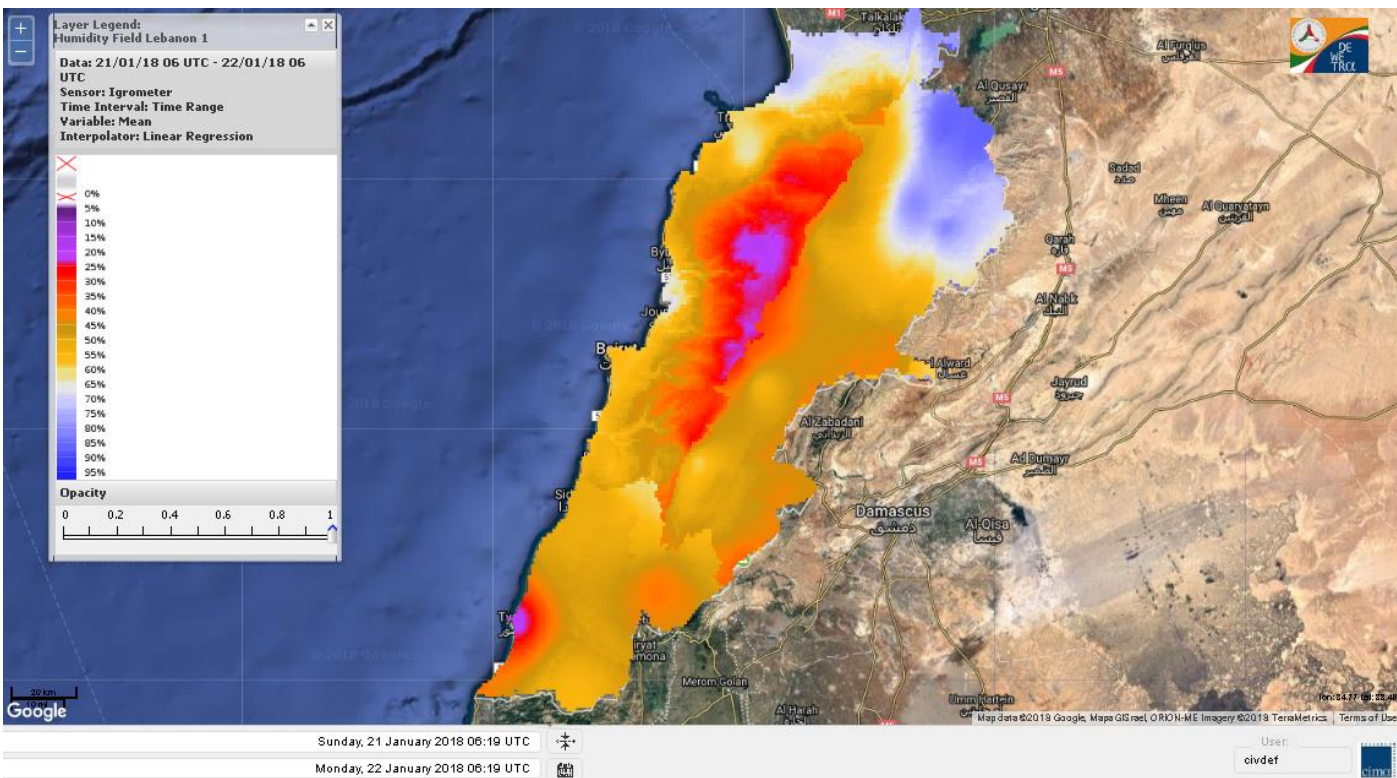
Data: Run: 22/01/2018 00:00. Forecast for 22
Model: RISICO for the Republic of Lebanon
Variable: Fire Weather Index
Spatial Resolution: Caza

- VERY LOW
- LOW
- MEDIUM-LOW
- MEDIUM
- MEDIUM-HIGH
- HIGH
- EXTREME

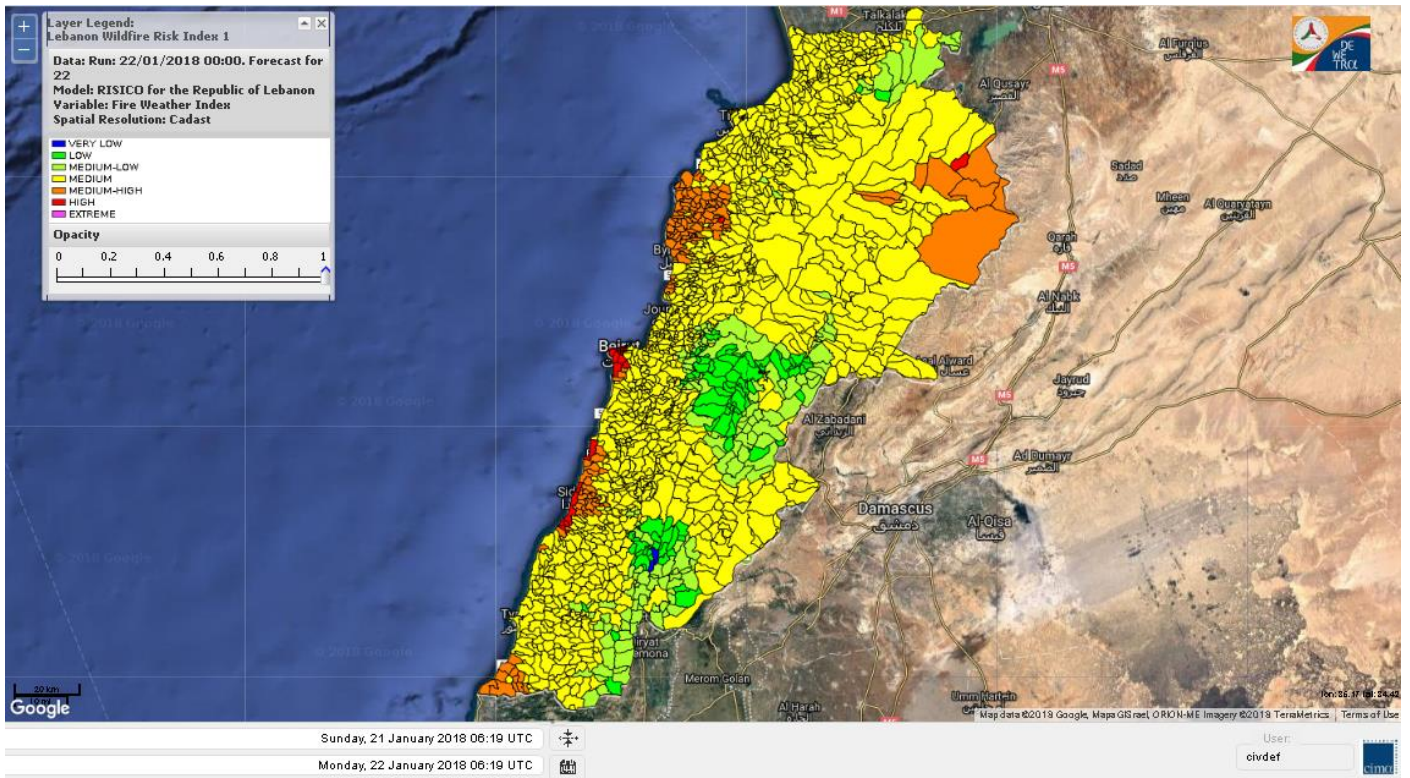
Lebanon temperature for Lebanon 19 Jan 2018



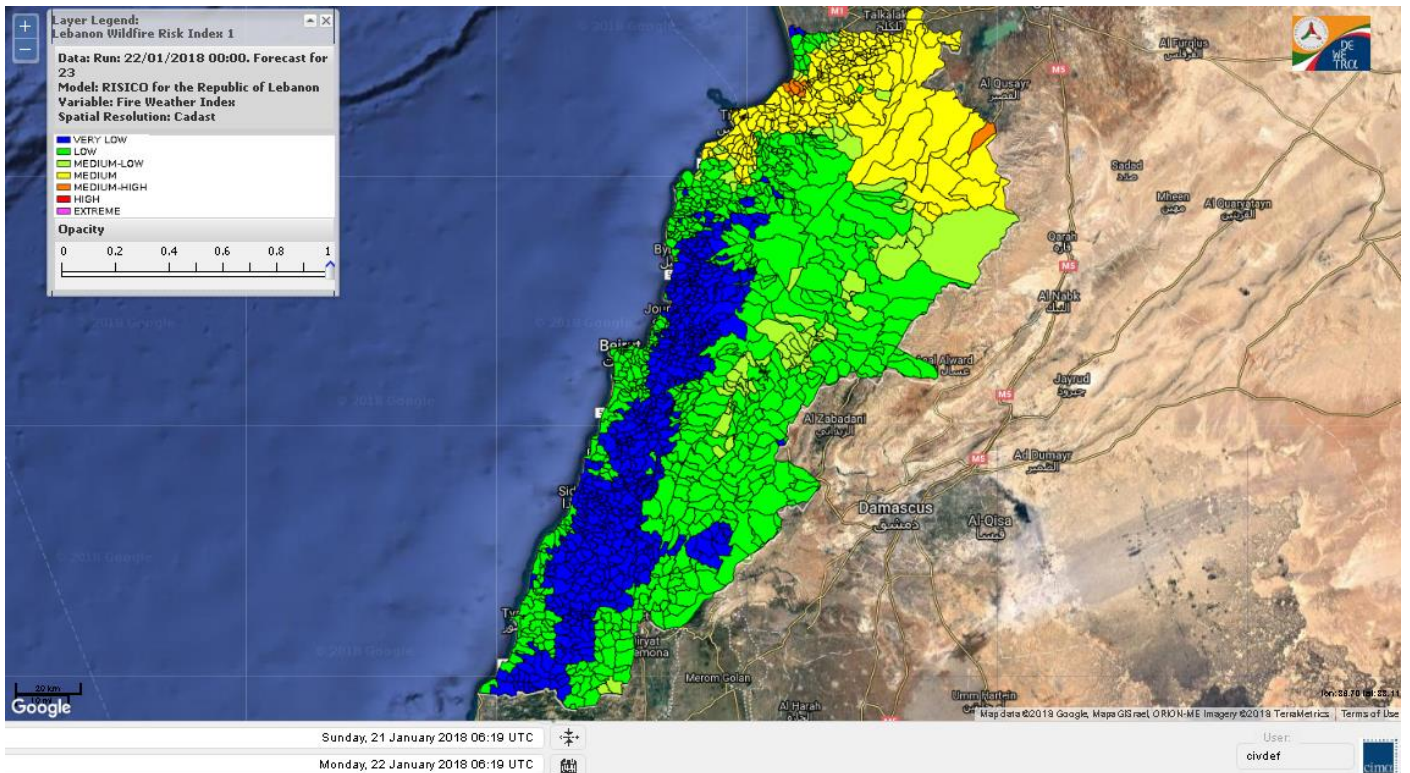
Lebanon humidity for Lebanon 19 Jan 2018



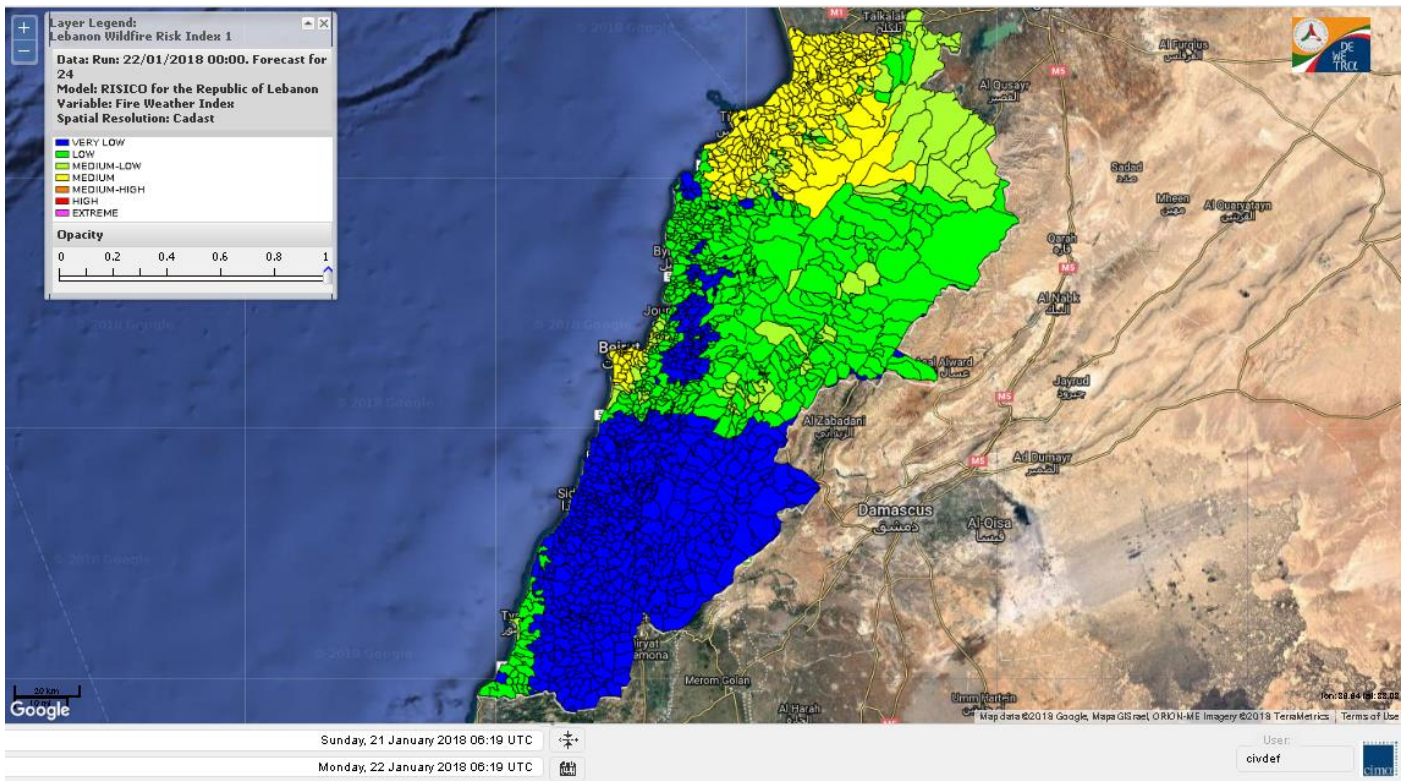
Lebanon for 19 Jan 2018



Lebanon for 20 2018



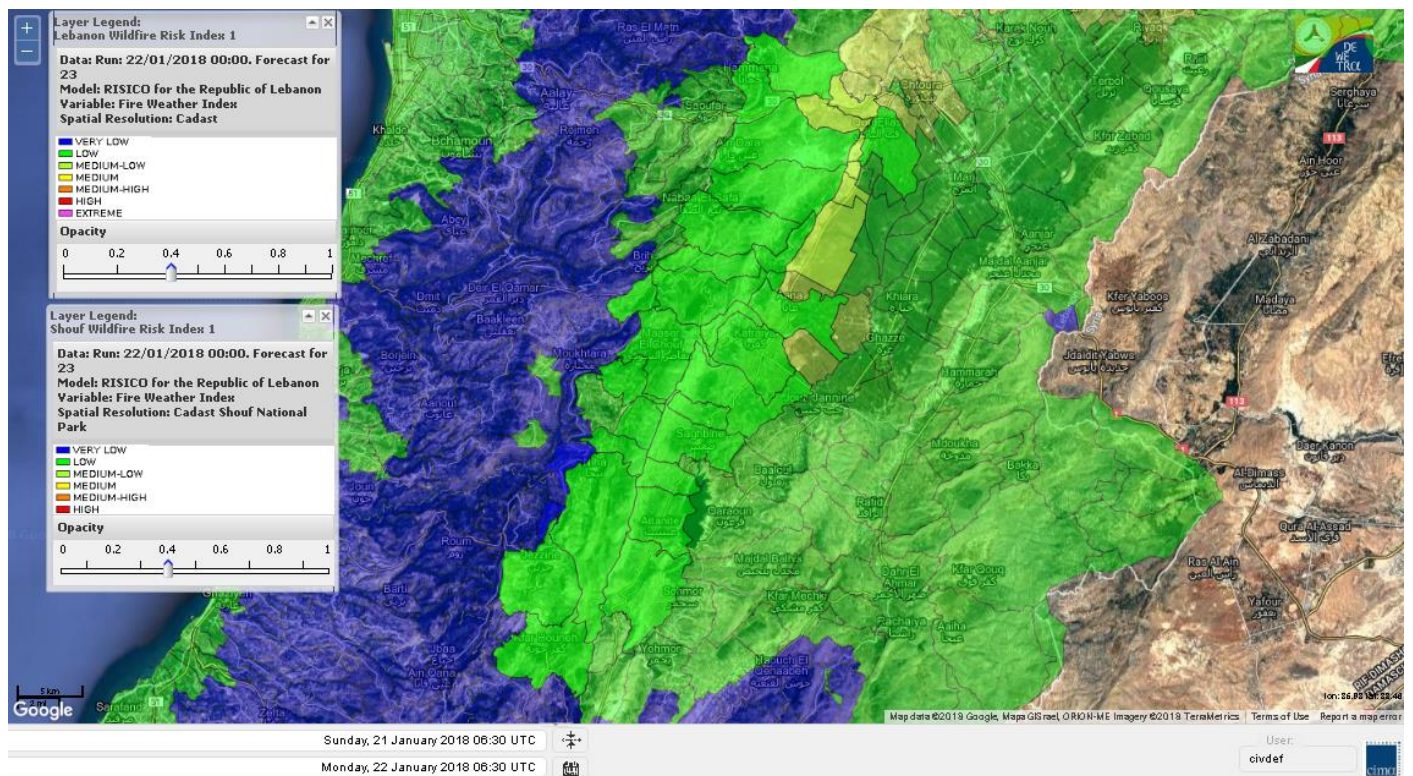
Lebanon for 21 Jan 2018



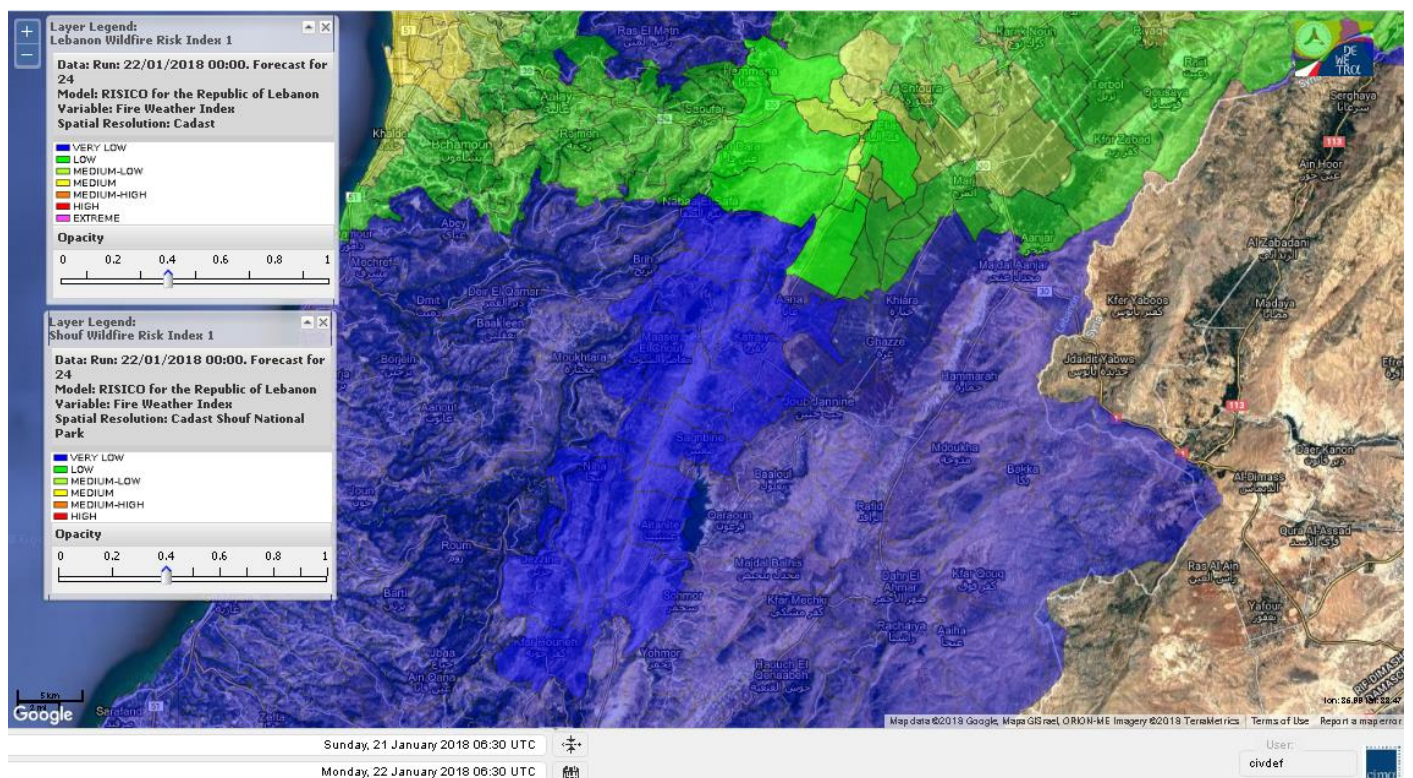
Shouf Biosphere Reserve Forecast for 19 Jan 2018



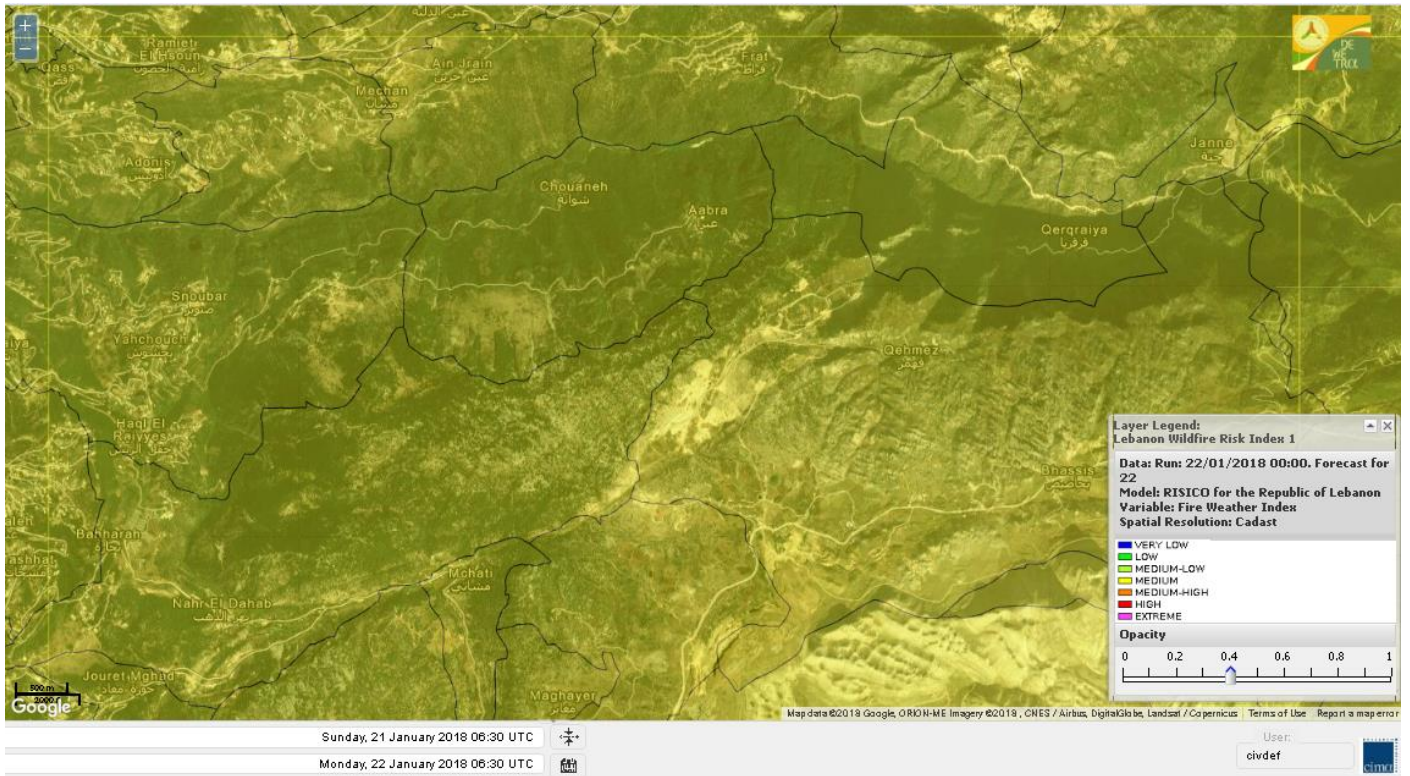
Shouf Biosphere Reserve Forecast for 20 Jan 2018



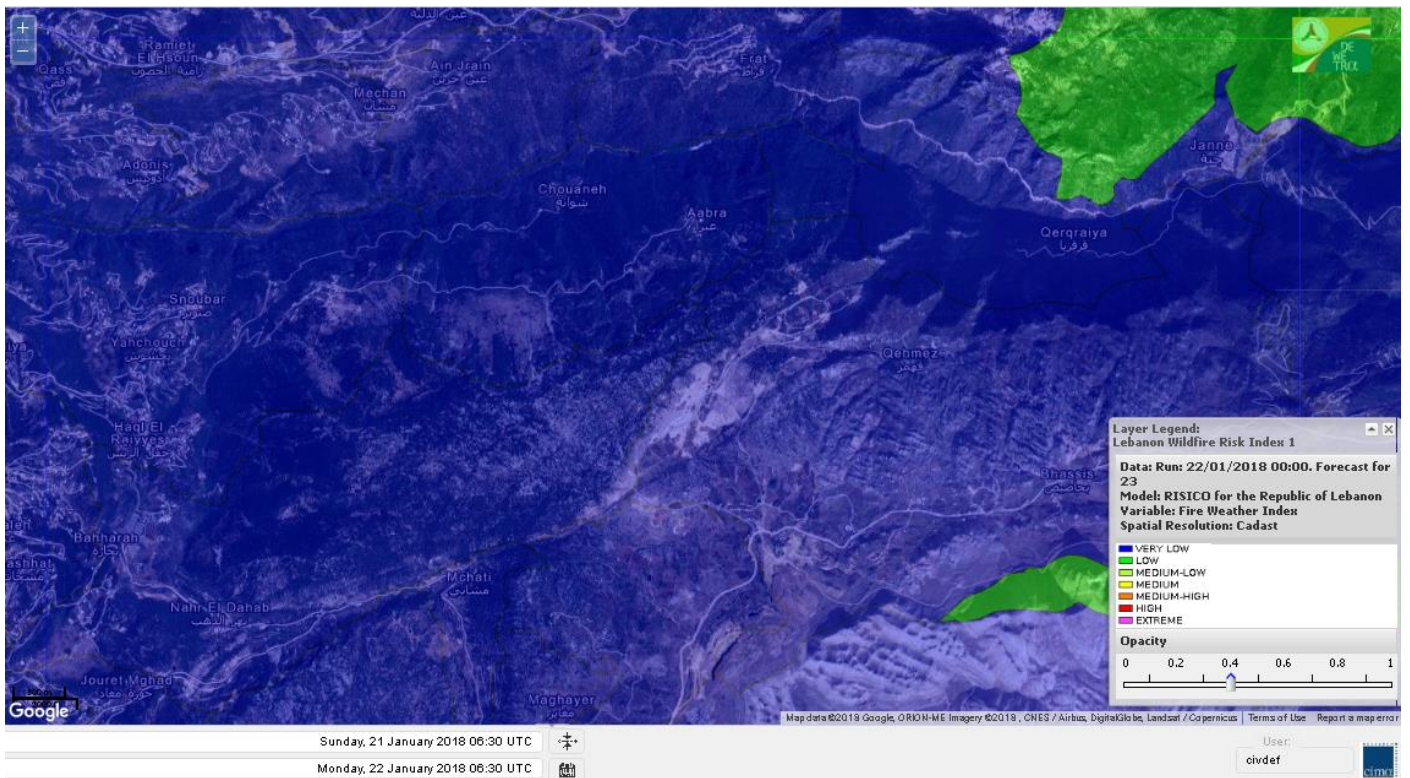
Shouf Biosphere Reserve Forecast for 21 Jan 2018



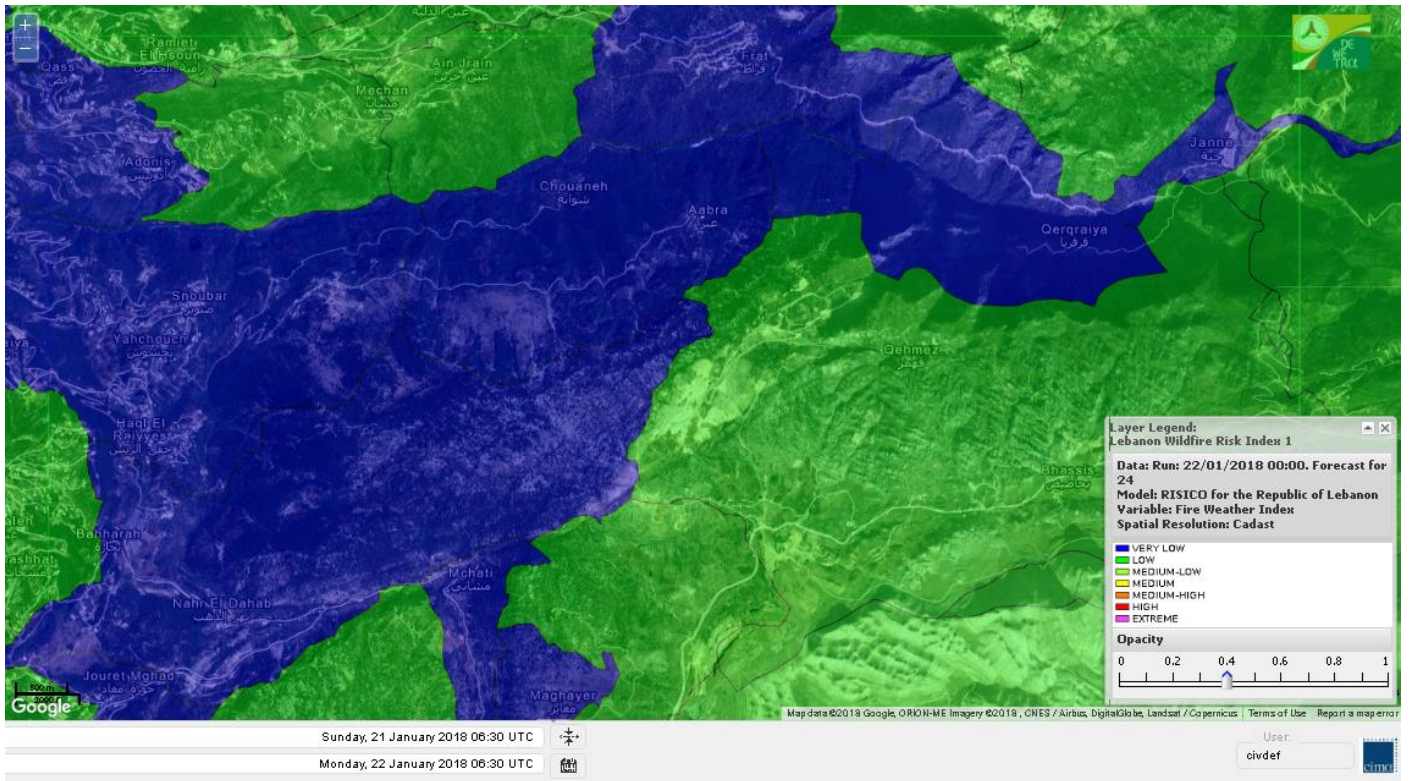
Jabal Moussa Reserve Forecast for 19 Jan 2018



Jabal Moussa Reserve Forecast for 20 Jan 2018



Jabal Moussa Reserve Forecast for 21 Jan 2018



Nord

Koura

Municipality	22-Jan	23-Jan	24-Jan	Municipality	22-Jan	23-Jan	24-Jan	Municipality	22-Jan	23-Jan	24-Jan
Aaba	M	M	M	Afsaddiq	M	L	M	Ain Ekriane	M	M	M
Amioun	M	ML	M	Anfeh	M	M	L	Badbhoun	M	L	M
Barghoun	M	ML	M	Barsa	M	M	M	Batroumine	M	M	M
Bdebba	M	M	M	Bechmizzine	M	L	M	Bednayel El-Koura	MH	L	L
Bhabbouch El-Koura	M	L	M	Bkeftine	M	M	M	Bnehran	M	L	M
Bqaiia El-Koura	M	M	M	Bsarma	M	M	M	Btaaboura	MH	L	M
Bterram	M	ML	M	Btouratij	M	M	M	Bziza	M	ML	M
Dar Beechtar	MH	L	M	Dar Chmezzine	M	L	M	Deddeh	M	M	M
Deir El-Balamand	M	ML	ML	Fih	M	M	M	Hraiche	M	M	M
Ijdaabrine	M	L	L	Kaftoun	MH	L	M	Kefraya El-Koura	MH	ML	L
Kfarakka	M	M	M	Kfarhata	M	L	L	Kfarhazir	M	L	M
Kfarkahel	M	M	M	Kfarsaroun	M	M	M	Kosba	M	M	M
Mejdel el-Koura	MH	L	M	Nakhle	M	M	M	Qalhat	M	ML	M
Ras Masqa	M	M	M	Rechdibbine	M	M	M	Zakroun	M	M	M
Zgharta El-Mtaouile	M	L	ML								

Bcharre

Municipality	22-Jan	23-Jan	24-Jan	Municipality	22-Jan	23-Jan	24-Jan	Municipality	22-Jan	23-Jan	24-Jan
Aabdine	M	L	M	Bane	M	L	M	Barhelioun	M	L	ML
Bazouone	M	L	L	Becharre	M	L	M	Beit Menzer	M	L	M
Billa	M	L	M	Blaouza	M	L	M	Bqaa Kafra	M	L	L
Bqerqacha	M	L	L	Breissat	M	L	L	Dimane	M	L	L
Hadath El Jobbeh	M	L	L	Hadchit	M	L	M	Hasroun	M	L	L
Mazraat Aassaf	M	VL	VL	Mazraat Bani Saab	M	L	L	Mchaa El-Jobbeh	M	L	L
Metrit	M	L	M	Moghr El-Ahoual	M	ML	M	Ouadi Qannoubine	ML	VL	VL
Qanat	M	L	L	Qnayer	M	L	L	Tourza	M	L	ML

Batroun

Municipality	22-Jan	23-Jan	24-Jan	Municipality	22-Jan	23-Jan	24-Jan	Municipality	22-Jan	23-Jan	24-Jan
Aabrine	MH	L	VL	Aalali	MH	L	L	Aartiz	MH	L	VL
Abdelli	MH	VL	L	Ajdabra	MH	L	L	Assia	MH	L	L
Basbina	MH	L	L	Batroun	MH	L	L	Bcheleh	M	VL	L
Bechtoudar	M	L	L	Beit Chlala	M	L	L	Beit Kassab	M	VL	VL
Bijdarfil	MH	L	L	Bqesmaya	MH	L	ML	Chatine	M	VL	L
Chebtin	MH	VL	L	Chekka	M	L	L	Daael	MH	L	L
Dahr Abi Yaghi	MH	VL	L	Daraya El-Batroun	MH	L	L	Deir Billa	M	L	L
Deir Kfifane	MH	L	L	Deir Mar Youhanna EL	M	L	L	Deir Mar Youssef Jra	MH	VL	L
Douma	M	VL	L	Douq	MH	VL	L	Eddeh El-Batroun	MH	L	L
Ftihat El-Batroun	MH	L	VL	Ghouma	M	L	L	Hadtoun	MH	VL	L
Hamat	MH	L	VL	Harbouna	MH	VL	L	Hardine	M	VL	VL
Helta	MH	L	L	Hery	MH	ML	L	Jebbla	MH	L	L
Jrabta El-Batroun	MH	L	L	Jrane El-Batroun	MH	L	L	Kfar Aabida	MH	L	L
Kfar Halda	M	L	L	Kfarb Shlaimane	MH	L	VL	Kfarhatna	MH	L	L
Kfarhay	MH	L	L	Kfarhelos	MH	VL	VL	Kfifane	MH	L	L

Kfour El Arabi	M	L	L	Koubba	MH	L	VL	Kour	MH	L	L
Mar Mama	MH	VL	L	Masrah	M	VL	L	Mehmarch	MH	L	L
Mrah Chdid	MH	L	L	Mrah El Ziyat	MH	L	L	Mrah El-Hajj	MH	VL	VL
Nahle El-Batroun	M	L	L	Niha El-Batroun	M	L	L	Ouajh El-Hajjar	MH	L	VL
Ouata Houb	M	VL	L	Qatnaaoun	MH	L	VL	Racha	H	L	L
Rachana	MH	L	L	Rachkida	MH	L	VL	Ram El-Batroun	MH	VL	L
Ras Nahhach	M	L	VL	Selaata	MH	L	L	Sghar	MH	L	L
Smar Jbayl	MH	L	L	Sourat El-Batroun	MH	L	L	Tannourine El-Faouqa	M	L	L
Tannourine Et-Tahta	M	VL	L	Thoum	MH	L	L	Toula El-Batroun	MH	L	L
Zan	MH	L	L								

Zgharta

Municipality	22-Jan	23-Jan	24-Jan	Municipality	22-Jan	23-Jan	24-Jan	Municipality	22-Jan	23-Jan	24-Jan
Aachach	M	M	M	Aalma	M	M	M	Aarde	M	M	M
Aintourine	M	L	M	Arabet Qozhaya	M	L	ML	Arde	M	M	M
Arjis	M	M	M	Asnoun	M	L	M	Ayto	M	L	ML
Basloukit	M	L	M	Bchannine	M	M	M	Besebeel	M	M	M
Bhairret Toula	M	L	ML	Bnachee	M	L	M	Boussit	M	M	M
Danha	M	L	M	Daraiya Zgharta	M	M	M	Deir Jdeide	M	L	M
Ehden	M	L	M	Halan	M	M	M	Hariq Zgharta	M	L	M
Houakir	M	L	ML	Hraiqis	M	M	M	laal	M	L	M
Ijbaa	M	L	M	Karm Saddeh	M	L	ML	Kfarchakhna	M	M	M
Kfardlaqous	M	ML	M	Kfarfou	M	M	M	Kfarhata Zgharta	M	L	M
Kfarhoura	M	M	M	Kfarsghab	M	L	M	Kfaryachit	M	L	M
Kfarzaina	M	M	M	Khaldiye	M	L	M	Mazraat Ajbeaa	M	M	M
Mazraat Et-Teffah	M	L	ML	Mazraat Jneid	M	L	M	Mejdlaiya Zgharta	M	M	M
Merh Kfarsghab	M	L	M	Miryata	M	M	M	Miziara	M	L	ML
Mzraat Kefraya	M	M	M	Qorah Bach	M	L	M	Rachiine	M	ML	M
Ras Kifa	M	ML	M	Sakhra	M	L	M	Sebhel Zgharta	M	L	M
Serhel	ML	VL	L	Tallet Zgharta	M	M	M	Toula Zgharta	M	L	ML
Zgharta	M	L	M								

Minieh-Denniye

Municipality	22-Jan	23-Jan	24-Jan	Municipality	22-Jan	23-Jan	24-Jan	Municipality	22-Jan	23-Jan	24-Jan
Aasaymout	M	M	M	Aaymar	M	L	M	Aazki	M	M	M
Ain El-Tineh-Miniyeh	M	L	ML	Assoun	M	L	M	Bakhaaoun	M	M	M
Bchennata	M	L	M	Bechehhara	M	L	L	Beddawi	M	M	M
Behouaita	M	L	ML	Beit El Foqss	M	L	ML	Beit Haouik	M	M	M
Beit Zoud	M	M	M	Bekaasafrine	M	L	M	Borj El Yahoudiyeh	M	M	M
Bqarsouna	M	L	ML	Btermaz	M	M	M	Debaael	M	M	M
Deir Ammar	M	M	M	Deir Nbouh	M	L	M	Haouaret-Miniyeh	M	M	M
Haql el Azimeh	M	L	L	Harf El Siyad	ML	M	ML	Hazmiye-Miniyeh	M	L	L
Izal	M	L	M	Jarjour	ML	L	L	Jayroun	M	ML	M
Kahf El-Malloul	M	L	ML	Karm El-Moher	M	L	M	Kfar Binine	M	ML	M
Kfarchalane	M	M	M	Kfarhabou	M	M	M	Kharroub-Miniyeh	M	ML	M
Mazraat El-Kreme	M	L	L	Mazraat Ketrane	M	L	ML	Merkebta	M	M	M
Minyeh	M	M	M	Mrah El Sfirat	M	L	L	Mrah Sraj	M	M	ML
Mrebbine	M	ML	M	Nabi Youcheaa	M	M	M	Nemrine	M	L	M

Qarhaiya	M	M	M	Qarne	M	M	ML	Qarsita	M	L	L
Qattineh-Miniyeh	M	L	L	Qemmamine	M	ML	ML	Qraine	M	L	L
Raouda-Aadoua	M	M	M	Rihaniyet-Miniyeh	M	MH	M	Sfireh	M	ML	ML
Sir Ed-Danniyeh	M	L	ML	Tarane	M	ML	ML	Terbol-Miniyeh	M	M	M
Zaghartaghriane	M	L	M	Zouq Bhannine	M	M	M				

Nabatiye

Nabatiye

Municipality	22-Jan	23-Jan	24-Jan	Municipality	22-Jan	23-Jan	24-Jan	Municipality	22-Jan	23-Jan	24-Jan
Aabba	M	VL	VL	Aazzi	M	VL	VL	Adchit El-Chqif	M	VL	VL
Ain Bou Swar	M	VL	VL	Ain Kana	M	VL	VL	Ali El-TaHER	ML	VL	VL
Ansar	M	VL	VL	Arab Salim	M	VL	VL	Arnoun	ML	L	VL
Bfaroue	M	VL	VL	Breyqaah	M	VL	VL	Charqiyeh	M	VL	VL
Choukine	M	VL	VL	Deir El Zahrani	M	VL	VL	Doueir El-Nabatiyeh	M	VL	VL
Habbouch El-Nabatiye	M	VL	VL	Hamra El-Nabatiyeh	M	VL	VL	Harouf El-Nabatiyeh	M	VL	VL
Hmaile	M	VL	VL	Houmin El Faouqa	M	VL	VL	Houmin El Tahta	M	VL	VL
Jarjough	M	VL	VL	Jbaah El-Nabatiyeh	M	VL	VL	Jebchit	M	VL	VL
Kfar Djal El-Nabatiy	M	VL	VL	Kfar Remmane	M	VL	VL	Kfar Sir	M	VL	VL
Kfar Tebnit	M	VL	VL	Kfarfila	M	VL	VL	Kfour El-Nabatieh	M	VL	VL
Mayfadoun	M	VL	VL	Mazraat Bsaffour	M	VL	VL	Mazraat Chalbaal	M	VL	VL
Mazraat Dmoul	M	VL	VL	Mazraat El Khreibeh	M	VL	VL	Mazraat El-Bayad El-	M	VL	VL
Mazraat Kfarjaouz	M	VL	VL	Mazraat Qalaat Meiss	M	VL	VL	Nabatiyeh El-Fawka	M	VL	VL
Nabatiyeh Et-Tahta	M	VL	VL	Namiriyyeh	M	VL	VL	Qaaqaaiyet El Jisr	M	VL	VL
Qossaibeh El-Nabatiy	M	VL	VL	Roumine	M	VL	VL	Sarba El-Nabatieh	M	VL	VL
Sir El-Gharbiyeh	M	VL	VL	Toul	M	VL	VL	Yehmor El-Nabatiyeh	M	VL	VL
Zaoutar El Charkiyeh	M	VL	VL	Zaoutar El-Gharbiyeh	M	VL	VL	Zebdine El-Nabatiyeh	M	VL	VL
Zefta	M	VL	VL								

Hasbaiya

Municipality	22-Jan	23-Jan	24-Jan	Municipality	22-Jan	23-Jan	24-Jan	Municipality	22-Jan	23-Jan	24-Jan
Ain Jarfa	ML	L	VL	Abou Qamha	ML	L	VL	Ain Qania	ML	L	VL
Bourghos	L	L	VL	Chebaa	M	L	VL	Chouaya Hasbaya	M	L	VL
Dellafeh	L	VL	VL	Fardiss Hasbaiya	ML	L	VL	Hasbaya	ML	L	VL
Hbariyeh	ML	L	VL	Kaoukaba Hasbaiya	ML	L	VL	Kfar Chouba	L	L	VL
Kfar Hamam	L	L	VL	Kfeir El-Zait	M	VL	VL	Khalwat Hasbaya	M	VL	VL
Khreibet Hasbaiya	ML	L	VL	Majidiyeh Hasbaiya	ML	L	VL	Marj Ez-Zhour (Haouc	M	VL	VL
Meri	ML	L	VL	Mimass	ML	VL	VL	Rachaiya El-Fokhar	ML	L	VL
Salaiyeb	ML	L	VL								

Marjayoun

Municipality	22-Jan	23-Jan	24-Jan	Municipality	22-Jan	23-Jan	24-Jan	Municipality	22-Jan	23-Jan	24-Jan
Aalmane Marjaayoun	ML	VL	VL	Aamra	ML	L	VL	Adayseh Marjaayoun	ML	L	VL
Adchit El-Koussair	M	L	VL	Ain Arab Marjaayoun	ML	L	VL	Bani Haiyann	ML	L	VL
Blatt Marjaayoun	ML	L	VL	Blida	ML	L	VL	Borj El-Moulouk	ML	L	VL
Boueyda Marjaayoun	ML	VL	VL	Deir Mimass	ML	L	VL	Deir Siriane	M	VL	VL
Dibbine	ML	L	VL	Ebel El Saqi	ML	L	VL	Houla	ML	L	VL
Houra	ML	L	VL	Kfar Kila	ML	L	VL	Khiam Marjaayoun	M	L	VL

Klayaa	ML	L	VL	Majdel Selem	ML	L	VL	Marjaayoun	ML	L	VL
Markaba	ML	L	VL	Mays El-Jabal	ML	L	VL	Mazraat Doumiat	ML	VL	VL
Mazraat Sarada	ML	L	VL	Mhaibib	ML	L	VL	Qabrikha	ML	L	VL
Qantara	ML	L	VL	Rab El-Thalathine	ML	L	VL	Saouaneh Marjayoun	M	L	VL
Talloussa	L	L	VL	Taybeh Matjaayoun	ML	L	VL	Touline	ML	L	VL

Bent Jbail

Municipality	22-Jan	23-Jan	24-Jan	Municipality	22-Jan	23-Jan	24-Jan	Municipality	22-Jan	23-Jan	24-Jan
Ain-Ebel	M	L	VL	Aitaroun	L	ML	VL	Aynata Bint Jbeil	ML	L	VL
Ayta El-Chaeb	M	VL	VL	Ayta El-Jabal	M	VL	VL	Beit Lif	M	VL	VL
Beit Yahoun	M	L	VL	Bint Jbeil	M	L	VL	Borj Qalaway	M	VL	VL
Braachit	M	L	VL	Chakra	ML	L	VL	Debel	M	L	VL
Deir Antar	M	VL	VL	Froun	M	VL	VL	Ghandouriyeh Bint Jb	M	L	VL
Hanine	M	L	VL	Hariss	M	VL	VL	Hdatha	M	L	VL
Jmeymeh	M	L	VL	Kafra Bint Jbeil	M	VL	VL	Kfar Dounine	M	VL	VL
Khirbet Selm	M	VL	VL	Kounine	ML	L	VL	Maroun El Ras	ML	ML	VL
Qalaway	M	VL	VL	Qaouzah	M	VL	VL	Qatmoun	M	L	VL
Ramya Bint Jbeil	M	VL	VL	Rchaf	M	L	VL	Rmeich	M	L	VL
Safad Al Battikh	M	L	VL	Salhaneh	M	VL	VL	Serbine	M	L	VL
Sultanieh Bint Jbeil	M	VL	VL	Tibnine	M	VL	VL	Tiri	ML	L	VL
Yaroun	ML	L	VL	Yater	M	VL	VL				

Mont Liban

Jbail

Municipality	22-Jan	23-Jan	24-Jan	Municipality	22-Jan	23-Jan	24-Jan	Municipality	22-Jan	23-Jan	24-Jan
Aabeydat	MH	VL	L	Aalita	M	VL	L	Aamchit	MH	L	L
Aarab El-Lahib	M	L	L	Aarasta	M	VL	VL	Adonis Jbeil	M	VL	VL
Afqa Jbeil	M	L	L	Ain El Delbeh Jbeil	M	VL	L	Ain El-Ghouyba	M	VL	L
Ain Jrain	M	VL	L	Ain Kfah	MH	L	L	Almat El Chemaliyat	M	VL	L
Almat El-Jenoubiya	M	L	L	Aqoura	M	L	L	Bayzoun	M	VL	L
Bchille Jbeil	M	VL	L	Bechtida	M	VL	VL	Behdaydat	MH	VL	L
Beit Habbaq	MH	L	L	Bejjeh	MH	L	L	Bekhaaz	MH	L	L
Berbara Jbeil	MH	L	L	Bintael	M	VL	L	Birket Hjoula	M	VL	VL
Blatt Jbeil	MH	VL	L	Boulhos	M	VL	L	Breyj Jbeil	MH	VL	VL
Chamat	MH	L	L	Chikhane	MH	L	L	Chmout	MH	VL	L
Eddeh Jbeil	MH	VL	L	Ehmej	M	L	L	Fatre	M	VL	VL
Ferhet	M	L	L	Fghal	MH	L	L	Frat	M	VL	VL
Ghabat	M	VL	L	Ghalboun	MH	L	L	Gharzouz	MH	L	L
Ghofrine	MH	L	L	Habil	M	VL	VL	Halate	M	VL	L
Haqel	M	VL	L	Hbaline	MH	L	L	Hboub	MH	VL	L
Hdeine	M	L	L	Hema Er-Rehban	M	L	L	Hema Mar Maroun Aann	M	L	L
Hjoula	M	VL	L	Hosrayel	MH	L	L	Hsarat	MH	L	L
Hsoun	M	VL	L	Jaj	M	L	L	Janne	M	VL	VL
Jbeil	MH	L	L	Jeddeyel Jbeil	MH	L	L	Jlisse	M	VL	VL
Jouret El-Qattine	M	VL	L	Kfar Baal Annaya	M	VL	L	Kfar Kidde	MH	L	L
Kfar Kouas	M	VL	L	Kfar Mashoun	MH	VL	L	Kfoun	MH	VL	L

Kharbe Jbeil	MH	L	L	Laqlouq	M	L	L	Lassa	M	VL	L
Lehfed	MH	VL	L	Maad	MH	L	L	Mar Sarkis	M	L	L
Mastita	MH	L	L	Mayfouq	MH	VL	L	Mazraat El Siyad	M	L	L
Mazraat El-Maaden	M	VL	VL	Mechane	M	VL	L	Mechmech Jbeil	M	VL	L
Mehrin	MH	VL	L	Mejdel El-Akoura	M	L	L	Mghayreh Jbeil	M	L	L
Mounsef	MH	L	L	Nahr Ibrahim	MH	VL	L	Qahmez	M	VL	L
Qartaba	M	L	L	Qartaboun	MH	L	L	Qattara Jbeil	MH	VL	L
Qorqraya	M	VL	VL	Ramout	MH	L	L	Ras Osta	M	VL	L
Rihane Jbeil	MH	L	L	Sakiet El-Khayt	MH	L	L	Saqi Richmaya	M	L	L
Sebrine	M	VL	L	Seraita	M	VL	L	Souane Jbeil	M	VL	L
Tadmor	M	L	L	Tartej	M	L	L	Torzaiya	MH	L	L
Yanouh Jbeil	M	L	L	Zibidine Jbeil	M	VL	VL				

El Metn

Municipality	22-Jan	23-Jan	24-Jan	Municipality	22-Jan	23-Jan	24-Jan	Municipality	22-Jan	23-Jan	24-Jan
Aain El-Qabu	L	VL	VL	Aain El-Qach	M	VL	VL	Aain El-Teffaha	ML	VL	VL
Aain el-Safssaf El-M	ML	VL	VL	Abou Mizane	ML	VL	VL	Ain Aar	M	VL	ML
Ain Alaq	M	VL	L	Ain El-Kharroube	M	VL	VL	Ain El-Sendiane	ML	VL	VL
Ain El-Zeitoune	L	VL	VL	Ain Saadeh	M	VL	L	Aintoura El-Matn	L	L	L
Amaret Chalhoub	M	L	M	Antelias	M	L	ML	Atchaneh	M	VL	L
Ayroun	M	VL	VL	Baabdat	ML	VL	VL	Baouchariyeh	M	L	M
Baskinta	ML	VL	L	Beit Chabab	M	VL	L	Beit El-Chaar	M	L	ML
Beit El-Kekko	M	VL	M	Beit Mery	M	VL	L	Bhersaf	M	VL	VL
Bikfaya	M	VL	VL	Biyakout	M	L	L	Bnabil	L	VL	VL
Bourj Hammoud	M	L	M	Bqennaya	M	VL	L	Broummana El-Matn	M	VL	VL
Bsalim	M	VL	L	Bsifrine	L	VL	VL	Bteghrine	L	VL	VL
Chaouiye	M	VL	L	Chouaya El-Matn	M	VL	L	Choueir	ML	VL	VL
Chrine	ML	VL	VL	Dahr El Sawan El-Mat	M	VL	VL	Daychouniyeh	M	L	L
Dbayeh	M	L	M	Deir Chamra	ML	VL	VL	Deir Mar Abda el Mch	M	VL	L
Deir Mar Roukouz	M	L	ML	Deir Tamiche	M	VL	L	Dik El-Mehdi	M	VL	ML
Dikwaneh	M	L	M	Douar El-Matn	M	VL	VL	Fanar	M	L	ML
Fraike	M	VL	L	Haret El-Ballaneh	M	L	ML	Hbous	M	VL	ML
Himlaya	M	VL	VL	Jal El Did	MH	L	M	Jdeideh El-Metn	M	L	ML
Jouar El-Matn	ML	VL	VL	Jouret El-Ballout	M	VL	VL	Kaaqour	L	VL	VL
Kfar Aaqab	ML	VL	VL	Kfertay El-Matn	M	VL	L	Khenchara	ML	VL	VL
Khillet El-Mtain	L	VL	VL	Konnabat Broummana	M	VL	VL	Konnabat Salima	ML	VL	VL
Machraah El-Matn	ML	VL	L	Majdel Tarchich	L	L	L	Majzoub	M	VL	L
Mansouriyeh El-Metn	M	L	ML	Mar Boutros Karm Et-	M	VL	VL	Mar Chaya et Mzekke	M	VL	VL
Mar Moussa Ed-Douar	M	VL	VL	Marjaba	ML	VL	L	Masqa	M	VL	VL
Mayasse	M	VL	VL	Mazraat Deir Aoukar	M	VL	ML	Mazraat El-Hadirat	M	VL	ML
Mazraat Yachouh	M	VL	ML	Mchikha	L	VL	L	Menqlet Mezher	M	L	ML
Mhaydseh Matn	M	VL	VL	Mkalles	M	L	ML	Mrouj	M	VL	L
Mtain	ML	L	L	Mtayleb	M	VL	ML	Nabay	M	VL	L
Naccache	M	L	ML	Ouadi Chahine	M	VL	VL	Ouadi El-Karm El-Mat	ML	VL	VL
Ouata El-Mrouj	ML	VL	VL	Ouyoun El-Matn	M	VL	VL	Qornet Chehwan	M	VL	L
Qornet El-Hamra	M	VL	L	Roumieh	M	VL	L	Sfeilet Bikfaya	M	VL	VL
Sinn El-Fil	M	L	M	Zabbougha	ML	VL	VL	Zalqa	M	L	M

Zarouon	ML	VL	VL	Zekrite	M	VL	L	Zighrine El-Matn	M	VL	VL
Zouk El-Khrab	M	L	ML								

Chouf

Municipality	22-Jan	23-Jan	24-Jan	Municipality	22-Jan	23-Jan	24-Jan	Municipality	22-Jan	23-Jan	24-Jan
Aalmane El-Chouf	MH	VL	VL	Aammq El-Chouf	M	VL	VL	Ain Ouzein	M	VL	VL
Ain Qani	M	VL	VL	Ain Zhalta	ML	L	VL	Ainbal	M	VL	VL
Amatour	M	VL	VL	Anout	M	VL	VL	Atrine	M	VL	VL
Baadarane	M	L	VL	Baaqline	M	VL	VL	Baasir	MH	L	VL
Barja	MH	L	VL	Barouk	M	L	VL	Bater	M	VL	VL
Batloun	M	L	VL	Bayqoun	M	L	VL	Bchetfine	M	VL	VL
Beiteddine	M	VL	VL	Benouati Ech-Chouf	M	VL	VL	Berjein	M	VL	VL
Bireh et Mtalleh	M	VL	VL	Biret El-Chouf	M	L	VL	Bkechtine Ouel Mchei	M	VL	VL
Bkifa El-Chouf	M	VL	VL	Botme	M	VL	VL	Bqaiaa Ech-Chouf	M	VL	VL
Bsaba El-Chouf	M	VL	VL	Chammis El-Chouf	M	L	VL	Chehim	M	VL	VL
Chemaarine	M	VL	VL	Chourit	M	VL	VL	Daher El-Chouf	M	VL	VL
Dalhoun	M	L	VL	Damour	M	L	VL	Daraya El-Chouf	M	VL	VL
Deir El-Moukhalles	M	VL	VL	Deir Baba	M	VL	VL	Deir Dourit	M	VL	VL
Deir El-Qamar	M	VL	VL	Deir Kouche	M	VL	VL	Dibbieh	M	VL	VL
Dmit	M	VL	VL	Fouara Jaafar	M	VL	VL	Fraidis El-Chouf	M	L	VL
Ghabet Jaafar	M	VL	VL	Gharife	M	VL	VL	Haret Jandal	M	VL	VL
Hasrout	M	VL	VL	Jadra	MH	VL	VL	Jahlieh	M	VL	VL
Jbeih El-Chouf	M	L	VL	Jdeidet El-Chouf	M	VL	VL	Jiyeh	H	L	VL
Jleilyeh	M	VL	VL	Jmailiyeh	M	VL	VL	Joun	M	VL	VL
Kahlounie El-Chouf	M	L	VL	Ketermaya	MH	L	VL	Kfar Faqoud	M	VL	VL
Kfar Hamal	M	VL	VL	Kfar Him	M	VL	VL	Kfar Katra	M	VL	VL
Kfar Niss	M	L	VL	Kfar hay	M	VL	VL	Kfarnabrakh	M	VL	VL
Khirbet Bisri	M	VL	VL	Knayse El-Chouf	M	VL	VL	Maaniyeh	M	VL	VL
Maasser Beiteddine	M	VL	VL	Maasser El-Chouf	M	L	VL	Majdalouna	M	VL	VL
Majdel El-Meouch	M	VL	VL	Mazboud	M	L	VL	Mazmoura	M	VL	VL
Mazraat El Chouf	M	VL	VL	Mazraat El Daher	M	VL	VL	Mazraat El-Douair	M	VL	VL
Mechref	M	VL	VL	Mghairie	M	L	VL	Mghayrie El-Chouf	M	VL	VL
Moukhtara	M	VL	VL	Mrusti	M	L	VL	Mtolle	M	VL	VL
Naameh	M	L	L	Niha El-Chouf	M	L	VL	Ouadi Abou Youssef	M	VL	VL
Ouadi Ed-Deir	M	VL	VL	Ouadi El-Sit	M	VL	VL	Ouadi bnehlay	M	VL	VL
Qraibeh	M	L	VL	Qreiaa	M	VL	VL	Rmayle El-Chouf	MH	VL	VL
Semqaniyeh	M	VL	VL	Sibline	MH	VL	VL	Sirjbeil	M	VL	VL
Warhanieh	M	L	VL	Werdaniyeh	MH	L	VL	Zaarourieh	M	VL	VL

Baabda

Municipality	22-Jan	23-Jan	24-Jan	Municipality	22-Jan	23-Jan	24-Jan	Municipality	22-Jan	23-Jan	24-Jan
Abadiyeh	M	VL	L	Ain Mouaffaq	M	VL	L	Araiya	M	VL	L
Arbaniyeh	ML	VL	VL	Arsoun	ML	VL	VL	Baabda	M	L	ML
Baalchmey	M	VL	L	Bmaryam	ML	VL	L	Bourj El-Brajneh	MH	L	M
Boutchay	M	L	L	Bsaba Baabda	M	L	ML	Btekhney	L	VL	VL
Btibyat	L	VL	VL	Bzbedine	L	VL	VL	Chbeniyeh	ML	L	L
Chiyah	H	L	M	Chmeisset Baabda	L	VL	VL	Chouit	M	VL	VL
Deir El-harf	ML	VL	VL	Deir Khouna	M	VL	L	Dlaybeh	ML	VL	VL

Falougha	L	L	L	Furn El-Chebbak	M	L	M	Hadath Beyrouth	M	L	M
Halaliyeh Baabda	M	VL	VL	Hammana	ML	L	L	Haret El Sett	M	L	L
Haret Hamze	M	VL	L	Haret Hreik	MH	L	M	Hasbaiya El-Metn	L	VL	VL
Jouar El-Hoz	L	VL	L	Jouret Arsoun	L	VL	VL	Kfar Chima	M	L	ML
Kfar Selouane	L	L	L	Khalouat Baabda	ML	L	L	Kneisset Baabda	M	VL	VL
Laylakeh	M	L	M	Louayzeh Baabda	M	L	L	Merdache	M	L	ML
Mzairaa Baabda	M	VL	VL	Ouadi Chahrour El Ol	M	L	L	Ouadi Chahrour El So	M	L	L
Qalaa Baabda	ML	VL	VL	Qhraybe Baabda	ML	L	L	Qobbayaa	ML	L	L
Qornayel	L	VL	VL	Qortada	M	VL	VL	Qrayeh Baabda	ML	VL	L
Qsaibeh Baabda	M	VL	VL	Qtale Baabda	L	VL	VL	Ras El Metn	M	VL	VL
Ras El-Haref	ML	L	L	Rouayset El-Ballout	M	VL	VL	Salima Baabda	ML	VL	VL
Tahouitat El Ghadir	MH	L	M	Tarchich	L	L	L	Zandouqa	M	VL	VL

Aley

Municipality	22-Jan	23-Jan	24-Jan	Municipality	22-Jan	23-Jan	24-Jan	Municipality	22-Jan	23-Jan	24-Jan
Abey	M	VL	VL	Aghmid	ML	L	L	Ain Dara	L	L	L
Ain Drafil	M	VL	VL	Ain El Halazoun	M	VL	L	Ain El-Rmmaneh	M	VL	L
Ain Jedideh	M	VL	L	Ain Ksour	M	VL	VL	Ain Onoub	M	L	L
Ain Traz	M	VL	VL	Ainab	M	VL	L	Aley	M	VL	L
Aramoun	M	L	L	Aytat	M	L	ML	Azouniyeh	ML	L	L
Baawerta	M	L	VL	Badghan Oua Wadi Bad	M	L	L	Bassatine	M	VL	L
Bayssour	M	VL	L	Bchamoun	M	L	L	Bdadoun	M	L	L
Behouara	M	VL	L	Bennay	M	VL	VL	Bhamdoun El-Dayaa	M	L	L
Bhamdoun El-Mhatta	M	L	L	Bkhechey	M	VL	L	Bleibel	M	L	L
Bmakine	M	L	ML	Bmehray	L	L	L	Bouzrid	M	VL	VL
Bserrine	M	VL	L	Bsous	M	VL	L	Btalloun	M	VL	L
Btater	M	VL	L	Chanay	M	L	L	Charoun	M	L	L
Chartoun	M	VL	VL	Chemlane	M	VL	L	Choueifat El-Aamrous	M	L	M
Choueifat El-Oumara	M	L	ML	Choueifat El-Quoubbe	M	L	ML	Dakkoun	M	VL	VL
Deir Qoubel	M	L	L	Dfoun	M	VL	L	Douair El Remmaneh	M	VL	VL
Ghaboun	M	VL	L	Habramoun	M	VL	VL	Homs Oua Hama	M	VL	L
Houmal	M	L	L	Jisr El Qadi	M	VL	VL	Kehaleh	M	VL	L
Keyfoun	M	L	ML	Kfar Aamey	M	VL	L	Kommatyeh	M	L	ML
Maasrati	M	VL	VL	Majdel Baana	M	L	L	Mansourieh et Ain El	M	VL	L
Mazraat El-Nahr	M	VL	VL	Mchakhte	ML	L	L	Mecherfeh	M	L	L
Mejdaya	M	VL	L	Mrayjat	M	L	VL	Ramliyah	M	VL	VL
Rechmaya	M	VL	VL	Rejmeh	M	VL	L	Remhala	M	VL	L
Rouaysset El Neemane	M	VL	VL	Saoufar	M	L	L	Selfaya	M	VL	VL
Sirhmoul	M	VL	L	Souq El Ghareb	M	L	ML	Taazanieh	M	VL	L

Kesrouane

Municipality	22-Jan	23-Jan	24-Jan	Municipality	22-Jan	23-Jan	24-Jan	Municipality	22-Jan	23-Jan	24-Jan
Achkout	M	VL	VL	Adma Oua Dafneh	M	VL	L	Ain Ed-Delbe Kesroua	M	VL	VL
Ain El-Rihane	M	VL	L	Aintoura Kesrouane	M	L	L	Ajaltoun	M	VL	VL
Akaybeh Kesrouane	MH	VL	L	Aramoun Kesrouane	M	VL	VL	Azra ouel Ozor	M	VL	VL
Ballouneh	M	VL	VL	Batha	M	VL	VL	Bekaatat Achkout	M	VL	VL
Bekaatat Kanaan	M	VL	L	Bizhel	M	VL	VL	Bouar	MH	VL	L
Bqaatouta	M	VL	L	Bqaq Ed-Dine	MH	VL	L	Bzommar	M	VL	VL

Chahtoul	M	VL	L	Chnaniir	M	VL	VL	Chouan	M	VL	VL
Daraya Kesrouane	M	VL	VL	Darououn	M	VL	VL	Deir Baqlouch	M	VL	VL
Dlebta	M	VL	VL	Eghbeh	M	VL	VL	Faraya	M	VL	L
Fatka	M	VL	L	Feytroun	M	VL	VL	Ghazir	M	VL	L
Ghbaleh Kesrouane	M	VL	L	Ghedrass	M	VL	L	Ghosta	M	VL	VL
Ghyneh	M	VL	L	Harharaya w Kattine	M	VL	VL	Harissa Kesrouane	M	VL	VL
Hayata	M	VL	VL	Hosein	M	VL	L	Hrajel	M	VL	L
Jdeideh Ghazir	M	VL	VL	Jeita	M	VL	L	Jounieh Ghadir	M	VL	L
Jounieh Haret Sakhr	M	VL	L	Jounieh Salel Alma	M	VL	L	Jounieh Sarba	M	VL	L
Jouret Bedrane	M	VL	L	Jouret Mhad	M	VL	VL	Jouret Termos	M	VL	L
Kfar Debiane	M	VL	L	Kfar Tay Kesrouane	M	VL	VL	Kfar Yassine	M	VL	L
Kfour Kesrouane	M	VL	L	Kharayeb Nahr Ibrahi	M	VL	L	Klayaat Kesrouane	M	VL	VL
Maarab	M	VL	VL	Maaysra Kesrouane	M	VL	L	Mayrouba	M	VL	L
Mazraat Er-Ras	M	L	L	Mazraat Mrah El-Mir	M	VL	VL	Mchaa El Ftouh	M	L	L
Mchaa Faraya	M	VL	L	Mchaa Kfar Dibiane	M	L	L	Mghaer	M	VL	VL
Mradiyah	M	VL	VL	Nahr Ed-Dahab	M	VL	VL	Nammoura Kesrouane	M	VL	L
Ouata El Jaouz	M	VL	L	Ouata Sillam	M	VL	L	Raachine	M	VL	VL
Rayfoun	M	VL	VL	Safra Kesrouane	MH	VL	L	Shayle Kesrouane	M	VL	L
Tabarja	M	VL	L	Yahchouch	M	VL	VL	Zaaytreh	M	VL	VL
Zeytoun	M	VL	L	Zouk Mikael	M	L	ML	Zouk Mosbeh	M	L	ML

Baalbek_Hermel

Baalbek

Municipality	22-Jan	23-Jan	24-Jan	Municipality	22-Jan	23-Jan	24-Jan	Municipality	22-Jan	23-Jan	24-Jan
Aadous	M	ML	L	Aamchki	M	L	L	Aarsal	MH	ML	L
Ain Baalbek	M	M	L	Ain Bourday	M	L	L	Ain El-Benye	M	L	L
Ain El-Jaouz Baalbek	M	L	L	Ain El-Siya Chadoura	M	L	L	Al Khodr Baalbek	M	L	L
Al Nabi Chit	M	L	L	Aynata Baalbek	M	L	L	Baalbek	M	L	L
Bachwat	M	L	L	Barqa	M	L	L	Bednayel Baalbak	M	ML	ML
Beit Chama	M	ML	L	Bijjaje	M	M	L	Bouday	M	L	L
Brital	M	L	L	Btadi	M	L	L	Chaat	M	ML	L
Chaibe	M	L	L	Chlifa	M	L	L	Chmestar	M	ML	L
Dar El-Oussa	M	L	L	Deir El-Ahmar	M	L	L	Deir Mar Maroun Baal	M	M	ML
Douris	M	ML	L	Fakiha	M	M	L	Hadath Baalbek	M	L	L
Ham	M	L	L	Haour Taala	M	L	L	Hizzine	ML	L	L
Hlebta	MH	L	ML	Hosh Barada	M	L	L	Hosh El Dahab	M	L	ML
Hosh El Snid	ML	ML	ML	Hosh El-Nabi	ML	ML	L	Hosh El-Rafiq	M	ML	L
Hosh Tal Safiya	M	ML	L	Hrebta	M	L	L	laat	M	ML	ML
Jebaa	M	L	L	Jenta	M	L	L	Kfar Dabach	M	ML	L
Kfar Dane	M	L	L	Khraibeh El-Hermel	M	ML	L	Khreibet Baalbek	M	L	L
Kneisset Baalbek	M	L	L	Labueh	M	ML	L	Maarboun	M	L	L
Majdaloun	M	L	L	Maqneh	M	L	ML	Mazraat Beit Mcheik	M	ML	ML
Misraya	ML	ML	L	Moqraq	M	ML	L	Nabha El-Damdoum	M	L	L
Nabi Chbay	M	L	L	Nabi Osman	M	M	L	Nahleh baalbek	M	L	L
Ouadi El-Oss	MH	L	L	Qaa Baayoun	MH	M	ML	Qaa Jouar Maqiye	M	MH	ML
Qaa Ouadi El-Khanzir	M	M	ML	Qah Baalbek	H	M	ML	Qarha Baalbek	M	L	L

Qsarnaba	M	ML	L	Ram Baalbek	M	L	L	Ras Baalbek El Sahl	MH	M	ML
Ras Baalbek El-Charq	MH	M	ML	Riha	M	L	L	Saaide	ML	L	L
Sbouba	M	ML	L	Seriine El-Tahta	ML	L	L	Slouqi	M	L	L
Taiba Baalbek	M	L	L	Talia	ML	ML	ML	Taraiya	M	L	L
Temnin El Fawqa	M	ML	L	Temnin El-Tahta	L	ML	L	Tfail	M	L	L
Yahfoufa	M	L	L	Yammouneh	M	L	L	Younine	M	ML	L
Zboud	M	ML	L								

Hermel

Municipality	22-Jan	23-Jan	24-Jan	Municipality	22-Jan	23-Jan	24-Jan	Municipality	22-Jan	23-Jan	24-Jan
Charbine El-Hermel	M	M	ML	Hermel Jbab	M	M	M	Hermel	M	M	ML
Maaysra El-Hermel	M	ML	L	Michaa Mrajhine	M	M	M	Ouadi Faara	M	ML	ML
Ras Baalbek - Ouadi	MH	M	ML	Ras Baalbek El Gharb	M	M	M	Zighrine	M	M	ML

Akkar

Akkar

Municipality	22-Jan	23-Jan	24-Jan	Municipality	22-Jan	23-Jan	24-Jan	Municipality	22-Jan	23-Jan	24-Jan
Aain Tinta	M	M	M	Aaiyat	M	M	M	Aakkar El-Aatiqa	ML	M	ML
Aamar Akkar	M	M	M	Aamar El Baykat	M	M	M	Aamayer	M	M	ML
Aamriyet Akkar	M	M	M	Aandqet	ML	M	L	Aarmeh	M	M	M
Aarqa	M	M	M	Aawaynat	M	M	ML	Aayoun Akkar	M	M	M
Abboudiye	M	M	M	Ain El-Zeit	M	M	M	Ain Yaaqoub	M	M	M
Akroum	ML	M	ML	Aridet Cheikh Zennad	M	VL	M	Baldeh w Mazraat Bal	M	M	M
Barcha	M	M	M	Bardeh	M	M	M	Bebnine	M	MH	M
Beino	M	M	M	Beit Ayoub	M	M	M	Beit El-Haouch	M	M	M
Beit Mellat	M	M	M	Beit Younes	M	M	M	Berbara Akkar	M	M	M
Berqayel	M	M	M	Bezbina	ML	M	ML	Bireh Akkar	M	M	M
Borj	M	M	M	Bqerezla	M	M	M	Bzal	M	M	M
Chane	M	M	M	Chaqdouf	M	M	M	Charbila	M	M	M
Cheikh Mohammad	M	M	M	Cheikh Taba Es-Sahl	M	M	M	Cheikh Taba	M	M	M
Cheikh Zennad	M	L	M	Cheikhlar	M	M	ML	Chir Hmairine	M	ML	M
Daghle	M	M	M	Dahr Laissine	M	M	M	Darine	M	ML	M
Dawra	M	M	M	Dawsa w Baghdadi	M	M	M	Dayret Nahr El-Kabir	M	M	ML
Deir Dalloum	M	M	M	Deir Jennine	M	M	M	Denbou	M	M	M
Dibbabiyyeh	M	M	M	Douair Aadwiyeh	M	M	M	Fassikine	M	M	M
Fnaydek	M	M	M	Fraydes Akkar	M	M	M	Ghazayle	M	M	M
Habchit	M	M	M	Hakour	M	M	M	Halba	M	M	M
Haouchab	M	M	M	Hayssat	M	M	M	Haytla	M	M	M
Hayzouq	M	M	M	Hedd	M	M	M	Hmaira Akkar	M	M	M
Hmaiss Akkar	M	M	M	Hnaider	ML	M	ML	Hokr Ed-Dahri	M	VL	M
Hokr Etti	M	M	M	Hokr Jouret Srar	M	L	M	Houaich	M	M	M
Hrar	M	M	M	Idbil	M	M	M	llat	M	M	M
Janine	M	M	M	Jdeidet El-Joumeh	M	M	M	Jdeidet El-Kaiteh	M	M	M
Jebraïel	M	M	M	Kafr	MH	VL	L	Kafr	M	M	M
Karm Asfour	M	M	M	Kfar Melki Akkar	M	L	M	Kfar Noun	M	M	M
Kfarharra	M	M	M	Khalsa	M	M	ML	Kharnoubet Akkar	M	M	M

Khirbet Daoud Aakkar	M	M	M	Khirbet El Remmane	M	M	ML	Khirbet Shar	M	M	M
Khoreybet El-Jindi	M	M	M	Khreibet Aakkar	M	M	M	Kneisset Aakkar	M	VL	M
Kneisset Hnaider	ML	M	ML	Knisse	M	M	M	Kroum El-Aarab	M	M	M
Kwachra	M	M	M	Kweykhat	M	M	M	Machta Hammoud	M	M	ML
Majdala	M	M	M	Majdel Akkar	M	M	M	Mar Touma	M	MH	M
Marlaya Melhem	M	L	M	Mashha	M	M	M	Massoudiye	M	L	M
Mazraat Beit Ghattas	M	M	M	Mazraat En-Nahriye	M	M	ML	Mechmech	M	M	M
Memneh	L	L	L	Mhammara	M	MH	M	Mighraq Aakkar	M	VL	M
Minyara	M	M	M	Moqayteh	M	L	M	Mounjez	M	M	M
Msalla	M	M	M	Mzeihmeh	M	M	M	Nfaiseh	M	M	M
Noura Et-Tahta	M	M	M	Ouadi El-Haour	M	M	M	Ouadi El-Jamous	M	MH	M
Ouyoun El-Ghizlane	M	MH	M	Qaabarine	M	L	M	Qabaait	M	M	M
Qachlaq	M	M	M	Qantara Aakkar	M	M	M	Qarha Aakkar	ML	M	ML
Qarqaf	M	MH	M	Qboula	M	M	M	Qleiaat Aakkar	M	L	M
Qloud El-Baqie	M	M	M	Qobaiyat Aakkar	ML	M	L	Qobbat Chamrat	M	ML	M
Qorayat	M	M	M	Qornet Aakkar	M	M	M	Qsair Aakkar	M	M	M
Rahbe	M	M	M	Rihaniyet Aakkar	M	M	M	Rmah	M	M	ML
Rmoul	M	L	M	Saadine	M	ML	M	Sadaqa	M	M	M
Saidnaya	M	M	M	Sammouniye	M	M	M	Sayssouq	M	M	M
Semmaqiye	M	VL	M	Semmaqli	M	L	M	Sfinet El-Dreib	M	M	M
Sfinet El-Qaitaa	M	M	M	Sindyanet Zeidane	M	M	M	Souaisset Aakkar	M	M	M
Srar	M	M	M	Tal Abbas El Gharby	M	M	M	Tal Abbas El-Chargy	M	ML	M
Tal Biret	M	L	M	Tal Hmayra	M	L	M	Tal Maayan Tal Kiri	M	L	M
Tal Sibel	M	L	M	Tallet Chattaha	M	M	M	Tikrit	M	M	M
Tleil	M	M	M	Tshea	ML	M	M	Zawarib	M	M	M
Zouq El Hosniyeh	M	M	M	Zouq El-Haddara	M	M	M	Zouq El-Hbalsa	M	M	M
Zouq El-Moqachrine	M	MH	M								

Sud

Sour

Municipality	22-Jan	23-Jan	24-Jan	Municipality	22-Jan	23-Jan	24-Jan	Municipality	22-Jan	23-Jan	24-Jan
Aaiyeh	M	L	VL	Aalma El-Chaab	MH	VL	L	Aaytit	M	L	VL
Abbassiyeh Sour	M	L	L	Abou Chech	MH	VL	L	Ain Abou Abdallah	M	L	L
Ain Baal	M	L	L	Arzoun	M	VL	VL	Aziyeh	M	VL	L
Baflaya	M	VL	VL	Barich	M	VL	VL	Batouliyeh	M	L	L
Bayad	M	VL	VL	Bazouriyeh	M	L	VL	Bediass	M	VL	VL
Bestiyat	M	VL	VL	Borj El Chemali	M	L	L	Borj En-Naqoura	MH	L	L
Borj Rahhal	M	L	VL	Boustane	M	VL	VL	Btaychiyeh	MH	VL	L
Chaaitiye	M	VL	VL	Chameh	MH	VL	L	Chehabiye	M	VL	VL
Chehour	ML	VL	VL	Chihine	M	VL	VL	Debaal Sour	M	VL	VL
Deir Amess	M	VL	VL	Deir Kifa	M	VL	VL	Deir Qanoun El-Ain	M	L	L
Deir Qanoun El-Naher	M	VL	VL	Derdghaiya	M	VL	VL	Dhayra	MH	VL	L
Halloussiyeh	M	VL	VL	Hamoul	MH	VL	VL	Hanaouey	M	L	VL
Henniye	M	L	L	Hmairi Sour	M	VL	VL	Iskandarouna Sour	MH	L	L
Jbal El Botom	M	VL	VL	Jebbin	M	VL	L	Jennata	M	VL	VL
Jijim	M	VL	L	Jouaiya	M	VL	VL	Kneisset Sour	M	VL	VL

Maarake	M	L	VL	Maaroub	M	VL	VL	Majadel	M	VL	VL
Majdalzoun	M	VL	L	Mansouri Sour	MH	L	L	Marnba	ML	VL	VL
Marouahine	M	VL	VL	Mazraat El-Zalloutiy	M	VL	L	Mazraat Mechref	M	VL	VL
Mazraat Tayr Semhat	L	VL	VL	Mheilib	M	L	L	Neffakhiyeh	M	VL	VL
Niha Sour	M	VL	VL	Ouadi Jilo	M	L	VL	Qana	M	L	VL
Qolaileh Sour	M	L	L	Rechknay	M	VL	VL	Rmadiyah	M	VL	VL
Selha Sour	M	VL	VL	Siddiqine	M	VL	VL	Sour	M	L	ML
Srifa	M	VL	VL	Tayr Debbe	M	L	VL	Tayr Felsay	M	VL	VL
Tayr Harfa	MH	VL	L	Touayri	ML	VL	VL	Toura	M	VL	VL
Yanouh Sour	M	L	VL	Yarine	MH	VL	L	Zebqine	M	VL	VL

Saida

Municipality	22-Jan	23-Jan	24-Jan	Municipality	22-Jan	23-Jan	24-Jan	Municipality	22-Jan	23-Jan	24-Jan
Aanqoun	M	VL	VL	Aaqtanit	M	VL	VL	Aarab Ej-Jall	M	VL	VL
Aarab Tabbaya	M	VL	VL	Abra Saida	MH	VL	VL	Adloun	M	L	VL
Adousiyeh	MH	L	VL	Ain-El-Deleb	MH	VL	VL	Arzai	M	L	VL
Babliyah	M	VL	VL	Barty	M	VL	VL	Bissariyeh	M	L	VL
Bnaafoul	M	VL	VL	Bqosta	MH	VL	VL	Bramiy	MH	VL	VL
Daoudiyeh	M	VL	VL	Dareb El-Sim	MH	VL	VL	Erkay	M	VL	VL
Ghassanieh	M	VL	VL	Ghazieh	H	L	VL	Hajjeh	M	VL	VL
Haret Saida	MH	VL	VL	Hartiyeh	M	L	VL	Hlaliye Saida	MH	VL	VL
Insariyat	M	L	L	Jazira Saida	M	L	VL	Kafar Bit	M	VL	VL
Kaoutariyet El-Siyad	M	VL	VL	Kfar Chellal	M	VL	VL	Kfar Hatta Saida	M	VL	VL
Kfar Milke Saida	M	VL	VL	Khartoum	M	VL	VL	Khaziz	M	VL	VL
Khirbet Ed-Douair Sa	M	VL	VL	Khirbet El-Bassal	M	L	VL	Khrayeb Saida	M	VL	VL
Loubieh	M	L	VL	Maghdouche	MH	VL	VL	Majdelyoun	MH	VL	VL
Matariyet El-Choumar	M	L	L	Matayriyeh	MH	VL	VL	Mazraat 'Mseileh	MH	L	VL
Mazraat 'Snaiber	M	VL	VL	Mazraat Aarab Soukka	M	VL	VL	Mazraat Deir Taqla	M	VL	VL
Mazraat El Yahoudiye	M	VL	L	Mazraat El-Housseini	H	L	VL	Mazraat El-Mhaydaleh	M	VL	VL
Mazraat El-Ouasta	M	L	VL	Mazraat Jamjim	M	L	VL	Mazraat Kaoutariyet	M	VL	VL
Mazraat Kfar Badda	M	L	VL	Mazraat Oussamiyat	M	VL	VL	Mazraat Sari	M	L	VL
Mazraat Sinai	M	VL	VL	Meemariyeh	M	VL	VL	Merouaniyeh	M	VL	VL
Miyeh ou Miyeh	MH	VL	VL	Najjariyeh	H	L	VL	Qaaqiyat El-Snaouba	M	VL	VL
Qnarit	M	VL	VL	Qraiye Saida	MH	VL	VL	Saida Ed-Dekermane	H	VL	VL
Saida El-Oustani	H	VL	VL	Saida El-Qadimeh	MH	VL	VL	Saida Kefraya	M	VL	VL
Saksakiyeh	MH	L	L	Salhie Saida	MH	VL	VL	Sarafand	M	L	VL
Sfenta	M	VL	VL	Tafahta	M	VL	VL	Tanbourit	MH	VL	VL
Tebna	M	VL	VL	Zaghdraiya	MH	VL	VL	Zeita	M	VL	VL
Zrariyeh	M	VL	VL								

Jezzine

Municipality	22-Jan	23-Jan	24-Jan	Municipality	22-Jan	23-Jan	24-Jan	Municipality	22-Jan	23-Jan	24-Jan
Ain El-Mir (El Estab	MH	VL	VL	Anane	M	VL	VL	Aramta	ML	VL	VL
Ariya	M	VL	VL	Aychiyeh	L	VL	VL	Azour	M	VL	VL
Baba	M	VL	VL	Bayssour Jezzine	MH	VL	VL	Benoueteh Jezzine	M	VL	VL
Bhannine	M	VL	VL	Bisri	M	VL	VL	Bkassine	M	VL	VL
Bouslaya	M	VL	VL	Btedine El-Leqech	M	VL	VL	Chbail	VL	VL	VL
Choualiq Jezzine	MH	VL	VL	Dahr Ed-Deir	M	VL	VL	Deir El Qattine	M	VL	VL

Demachqiyeh	ML	VL	VL	Ghabbatiyeh	M	VL	VL	Harf Jezzine	M	VL	VL
Hassaniyeh	M	VL	VL	Haytoupleh	M	VL	VL	Haytura	ML	VL	VL
Hidab	ML	VL	VL	Homsiyeh	M	VL	VL	Jabal Toura	M	VL	VL
Jarmaq	ML	VL	VL	Jensnaya	MH	VL	VL	Jernaya	M	VL	VL
Jezzine	M	L	VL	Karkha	M	VL	VL	Kfar Falous	M	VL	VL
Kfar Houna	L	L	VL	Kfar Jarrah	MH	VL	VL	Lebaa	M	VL	VL
Louayzet Jezzine	L	VL	VL	Machmouche	M	VL	VL	Mahmoudiyeh Jezzine	ML	VL	VL
Maknounye Jezzine	M	VL	VL	Maraat Ouzaïyeh	L	VL	VL	Mazraat Daraya	L	VL	VL
Mazraat El-Aarqoub	L	VL	VL	Mazraat El-Mathane	M	VL	VL	Mazraat El-Rahbane	ML	VL	VL
Mazraat Khallet Khaz	L	VL	VL	Mazraat Louzid (Loua	L	VL	VL	Mazraat Qrouh	L	VL	VL
Mazraat Tamra	ML	VL	VL	Mazraat Zighrine Jez	L	VL	VL	Mazraat	L	VL	VL
Mharbiyeh	M	VL	VL	Midane Jezzine	M	VL	VL	Mjeydel Jezzine	MH	VL	VL
Mlikh	ML	VL	VL	Mrah El-Hbasse	MH	VL	VL	Ouadi Baanqoudaine	MH	VL	VL
Ouadi El-Laymoun	M	VL	VL	Ouardiyeh	VL	VL	VL	Qabaa Jezzine	M	VL	VL
Qatrani	L	VL	VL	Qaytoupleh	M	VL	VL	Qtaleh Jezzine	M	VL	VL
Rihane Jezzine	L	VL	VL	Rimat	M	VL	VL	Roum	M	VL	VL
Roummanet	M	VL	VL	Sabbah	M	VL	VL	Saydoun	M	VL	VL
Sfaray	M	VL	VL	Snaya	ML	VL	VL	Sojoud	L	VL	VL
Srayri	L	VL	VL	Taaid	M	VL	VL	Wadi Jezzine	M	VL	VL
Zhalta	M	VL	VL								

Bekaa

West Bekaa

Municipality	22-Jan	23-Jan	24-Jan	Municipality	22-Jan	23-Jan	24-Jan	Municipality	22-Jan	23-Jan	24-Jan
Aammiq BG	L	ML	L	Ain El Tineh BG	L	L	VL	Ain Zebdeh	M	L	VL
Ana	ML	L	VL	Aytanit	M	L	VL	Baaloul BG	M	L	VL
Bab Mareh	M	L	VL	Chouberqiye Aammiq	L	L	VL	Dakoue	ML	L	VL
Deir Ain El-Jaouze	M	L	VL	Deir Tahniche	ML	ML	VL	Ghaza	ML	L	VL
Harime El-Soughra	ML	L	VL	Hoch Harimeh	ML	L	VL	Jazira BG	ML	L	VL
Jib Jennine	ML	L	VL	Kamed-El-Laouz	ML	L	VL	Kefraya BG	M	L	VL
Khiara El Atika	ML	L	VL	Khiara	ML	L	VL	Khirbet Qanafar	M	L	VL
Lala	M	L	VL	Lebbaya BG	M	L	VL	Loussa	L	L	VL
Machghara	M	L	VL	Manara (Hammara) BG	L	L	VL	Mansoura BG	L	ML	VL
Marej BG	ML	L	L	Maydoun	L	L	VL	Ouaqf BG	ML	L	VL
Qaraaoun	M	L	VL	Qelya	ML	VL	VL	Raouda (Istabel)	ML	L	L
Saghbine	M	L	VL	Sohmor	M	L	VL	Soltan Yacoub el Ara	ML	L	VL
Souairy	ML	L	VL	Sultan Yaacoub	ML	L	VL	Tal Znoun	ML	ML	VL
Yehmor BG	L	L	VL	Zilaya	L	VL	VL				

Zahle

Municipality	22-Jan	23-Jan	24-Jan	Municipality	22-Jan	23-Jan	24-Jan	Municipality	22-Jan	23-Jan	24-Jan
Aanjar (Haouch Mouss)	ML	L	L	Ablah	L	ML	L	Ain Kfarzabad	L	L	L
Ali-El-Nahri	L	ML	ML	Bar Elias	M	L	ML	Bouarej	L	ML	ML
Cheberqiyet Tabet	ML	L	ML	Chtaura	L	ML	ML	Deir El Ghazal	ML	L	L
Delhamiyet Zahle	ML	L	L	Ferzol	L	L	L	Haouch El-Ghanam	L	ML	ML
Haouch Es-Siyadeh	L	L	ML	Haouch Hala	L	L	L	Haouch Mandara	L	L	ML

Haouch Qayssar	L	L	ML	Hezerta	L	ML	L	Hosh Moussa	ML	L	L
Jdita	L	ML	L	Kfarzabad	ML	L	L	Ksara	ML	L	ML
Majdel Aanjar	ML	L	VL	Makssi	L	ML	ML	Massa	ML	L	L
Mazraat Er-Remtaniye	L	ML	ML	Mrayjat Zahle	L	ML	ML	Mzaraa Zahle	L	ML	ML
Nabi Ayla	L	ML	L	Nasriyet Rizk	ML	L	L	Nasriyet Zahle	ML	L	L
Niha Zahle	ML	ML	L	Ouadi Ed-Deloum	L	ML	ML	Ouadi El-Arayech	L	ML	L
Qaa El Rim	ML	L	L	Qab Elias	L	L	L	Qousaya	ML	L	L
Rhit	ML	L	L	Riyak	L	ML	ML	Saadnayel	ML	L	ML
Taal El-Akhdar	L	L	L	Taalbeya	L	ML	L	Taanayel	ML	L	ML
Talamara	L	ML	ML	Tcheflik Edde Haouch	L	ML	L	Tcheflik Qiqano	L	L	ML
Terbol Zahle	ML	L	L	Touaite Zahle	L	ML	L	Zahle Aradi	L	L	L
Zahle El-Berbara	ML	ML	ML	Zahle El-Maallaqa	ML	L	ML	Zahle El-Midane	ML	ML	ML
Zahle Er-Rassiye	L	ML	ML	Zahle Haouch El-Ouma	M	L	ML	Zahle Haouch El-Ouma	ML	L	L
Zahle Haouch Ez-Zara	ML	L	ML	Zahle Maalaga Aradi	ML	L	L	Zahle Mar Antonios	ML	ML	ML
Zahle Mar Elias	ML	L	ML	Zahle Mar Gerios	ML	L	L	Zahle Saydet En-Naja	L	ML	L
Zebdoul	L	L	L								

Rachaiya

Municipality	22-Jan	23-Jan	24-Jan	Municipality	22-Jan	23-Jan	24-Jan	Municipality	22-Jan	23-Jan	24-Jan
Ain Arab Rachaiya	M	L	VL	Ain Ata	M	VL	VL	Ain Harche	M	VL	VL
Aqabe Rachaya	M	L	VL	Ayha	M	L	VL	Ayta El Fokhar	ML	L	VL
Bakifa Rachaya	M	L	VL	Bakka	M	L	VL	Beit Lahya	M	VL	VL
Bireh Rachaiya	ML	L	VL	Daheer El Ahmar	M	L	VL	Deir El-Achayer	M	L	VL
Heloua Rachaiya	M	L	VL	Hoch El Qannabeh Rac	M	VL	VL	Kaoukaba Bou Arab	M	L	VL
Kfar Danis	M	L	VL	Kfar Mechki	M	L	VL	Kfar Qouq	M	L	VL
Kherbet Rouha	M	L	VL	Majdel Balhiss	M	L	VL	Mdoukha	ML	L	VL
Mhaydseh Rachaiya	M	L	VL	Nabi Safa	M	L	VL	Rachaiya	M	L	VL
Rafid Rachaiya	M	L	VL	Selsata (Mazraat Dei	M	L	VL	Tannoura	M	VL	VL
Yanta	M	L	VL								

Beyrouth

Beyrouth

Municipality	22-Jan	23-Jan	24-Jan	Municipality	22-Jan	23-Jan	24-Jan	Municipality	22-Jan	23-Jan	24-Jan
Achrafieh	M	L	M	Ain el-Mreisse	H	L	M	Bachoura	H	L	M
Beirut Central Distr	H	L	M	Marfai	H	L	M	Mazraa	H	L	M
Medaouar	M	L	M	Minet el-Hosn	H	L	M	Mwssaitbeh	H	L	M
Ras Beirut	H	L	M	Rmeil	M	L	M	Saifi	H	L	M
Zqaq el-Blat	H	L	M								