

# Lebanon Fire Risk Bulletin



CIVIL DEDEFENCE

**Refer to cadast table condition.**

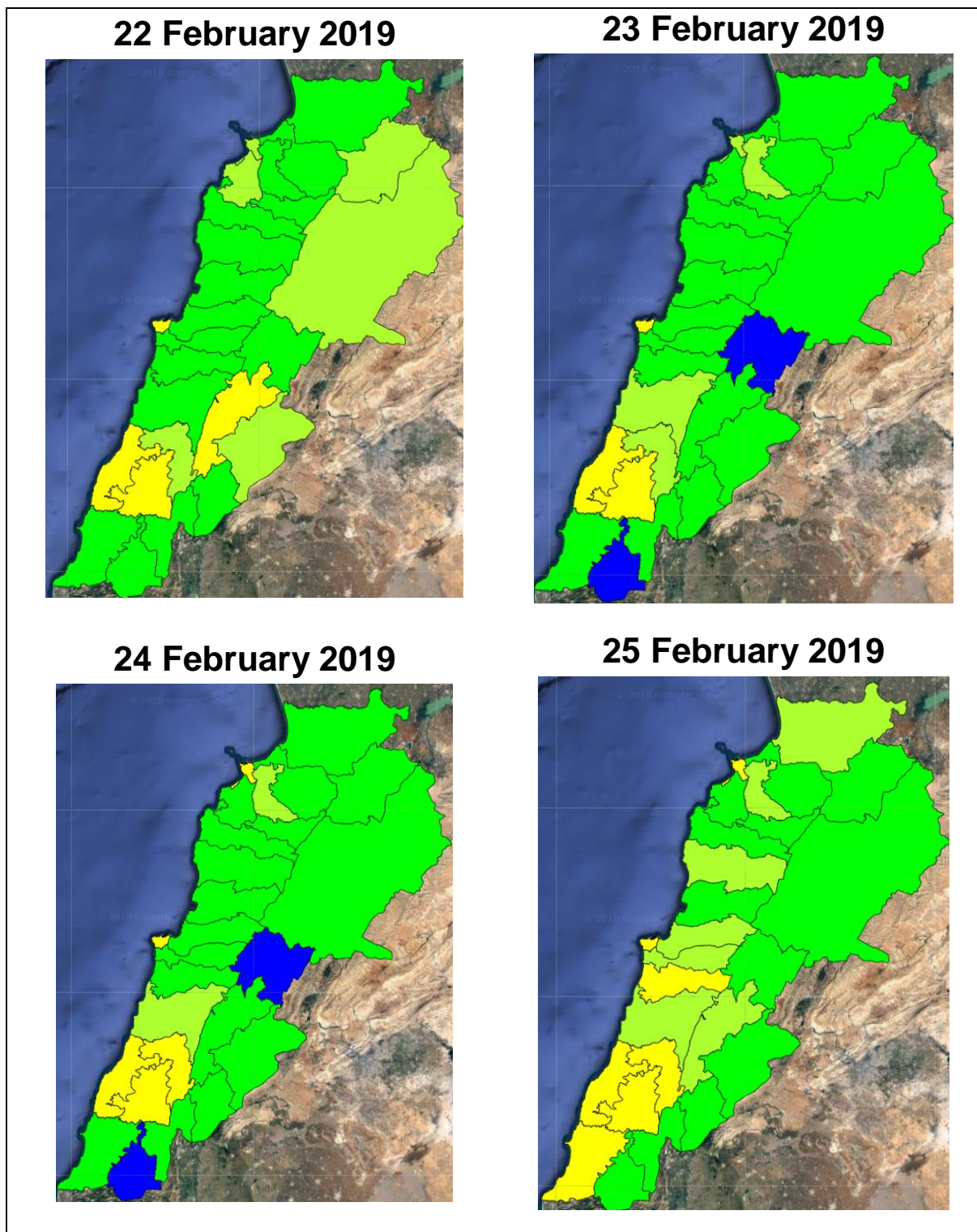
**Please note that the indicated temperature is at 2 meters height from the ground.**

General description of potential fire risk situation

Symbol	Level of risk	Meaning and actions
VL	<b>Very low</b>	Very low fire risk. Controlled burning operations can be hardly executed due to high fuel moisture content. Normally wildfires self-extinguish.
L	<b>Low</b>	Low fire risk. Controlled burning operations can be executed with a reasonable degree of safety.
ML	<b>Medium low</b>	Medium-low fire risk. Controlled burning operations can be executed in safety conditions. All the fires need to be extinguished.
M	<b>Medium</b>	Medium fire risk. Controlled burning operations would be avoided. All the fires need to be very well extinguished.
MH	<b>Medium high</b>	Controlled burning is not recommended. Open flame will start fires. Cured grasslands and forest litter will burn readily. Spread is moderate in forests and fast in exposed areas. Patrolling and monitoring is suggested. Fight fires with direct attack and all available resources.
H	<b>High</b>	Ignition can occur easily with fast spread in grass, shrubs and forests. Fires will be very hot with crowning and short to medium spotting. Direct attack on the head may not be possible requiring indirect methods on flanks. Patrolling and monitoring the territory is highly suggested.
E	<b>Extreme</b>	Ignition can occur also from sparks. Fires will be extremely hot with fast rate of spread. Control may not be possible during day due to long range spotting and crowning. Suppression forces should limit efforts to limiting lateral spread. Damage potential total. Patrolling and monitoring the territory is highly suggested.

**Beirut, 23 February 2019**

# FIRE RISK INDEX



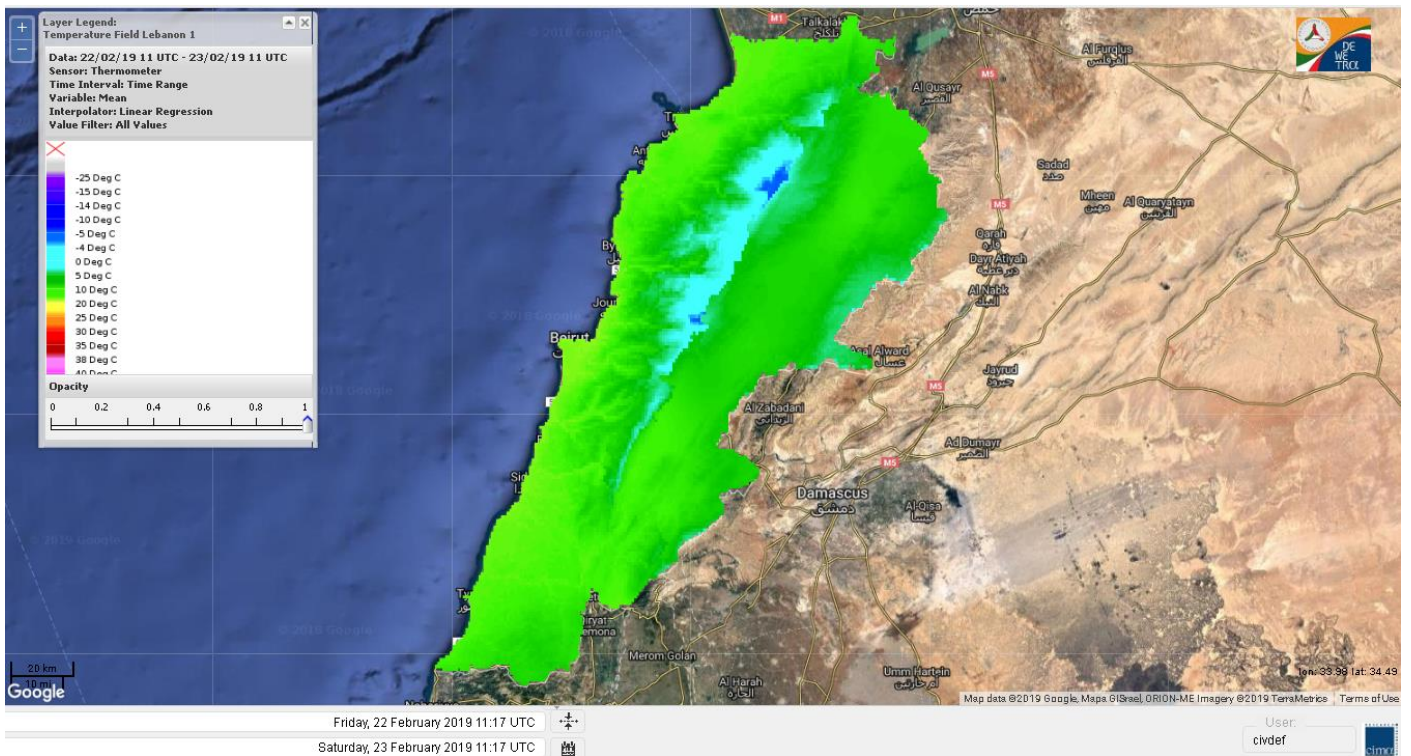
Layer Legend:  
Lebanon Wildfire Risk Index 1

Data: Run: 23/02/2019 00:00. Forecast for 23  
Model: RISICO for the Republic of Lebanon  
Variable: Fire Weather Index  
Spatial Resolution: Caza

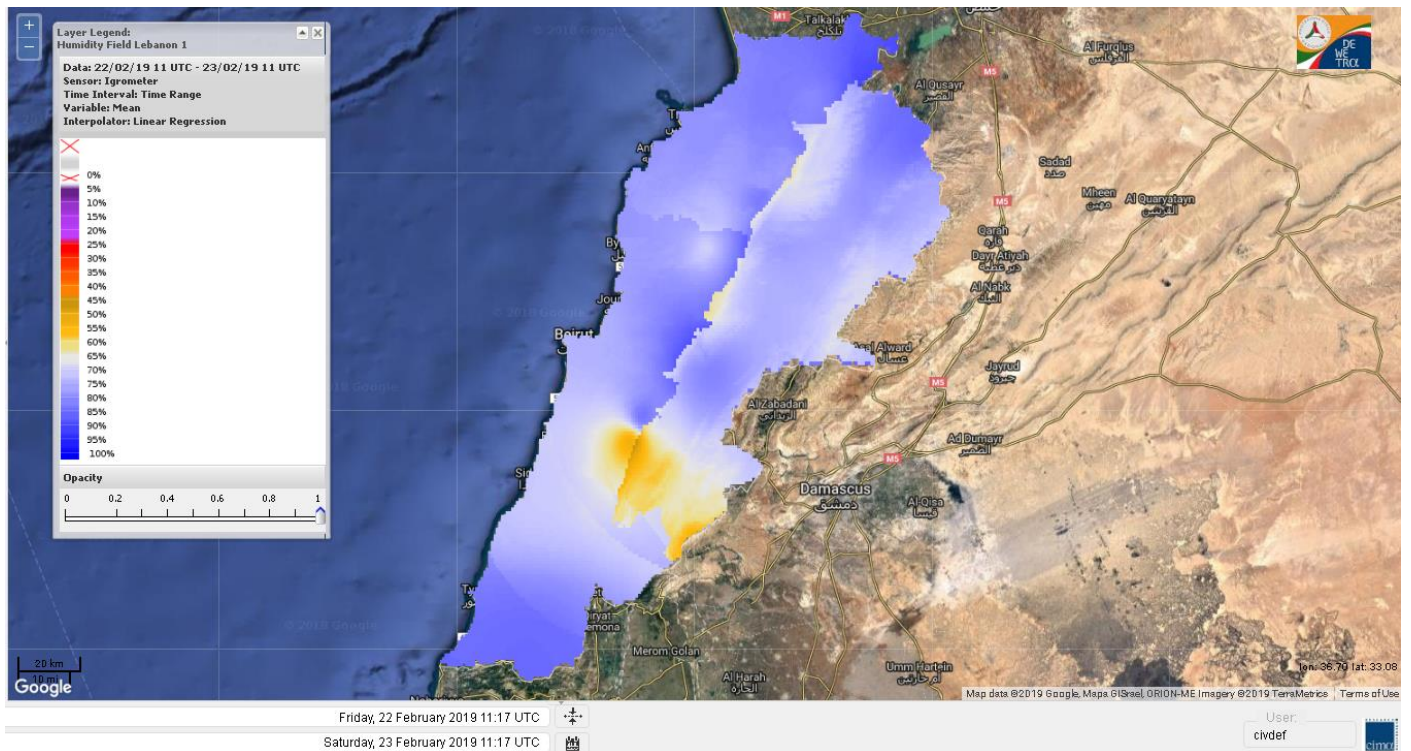
- VERY LOW
- LOW
- MEDIUM-LOW
- MEDIUM
- MEDIUM-HIGH
- HIGH
- EXTREME



# Lebanon temperature for 23 February 2019

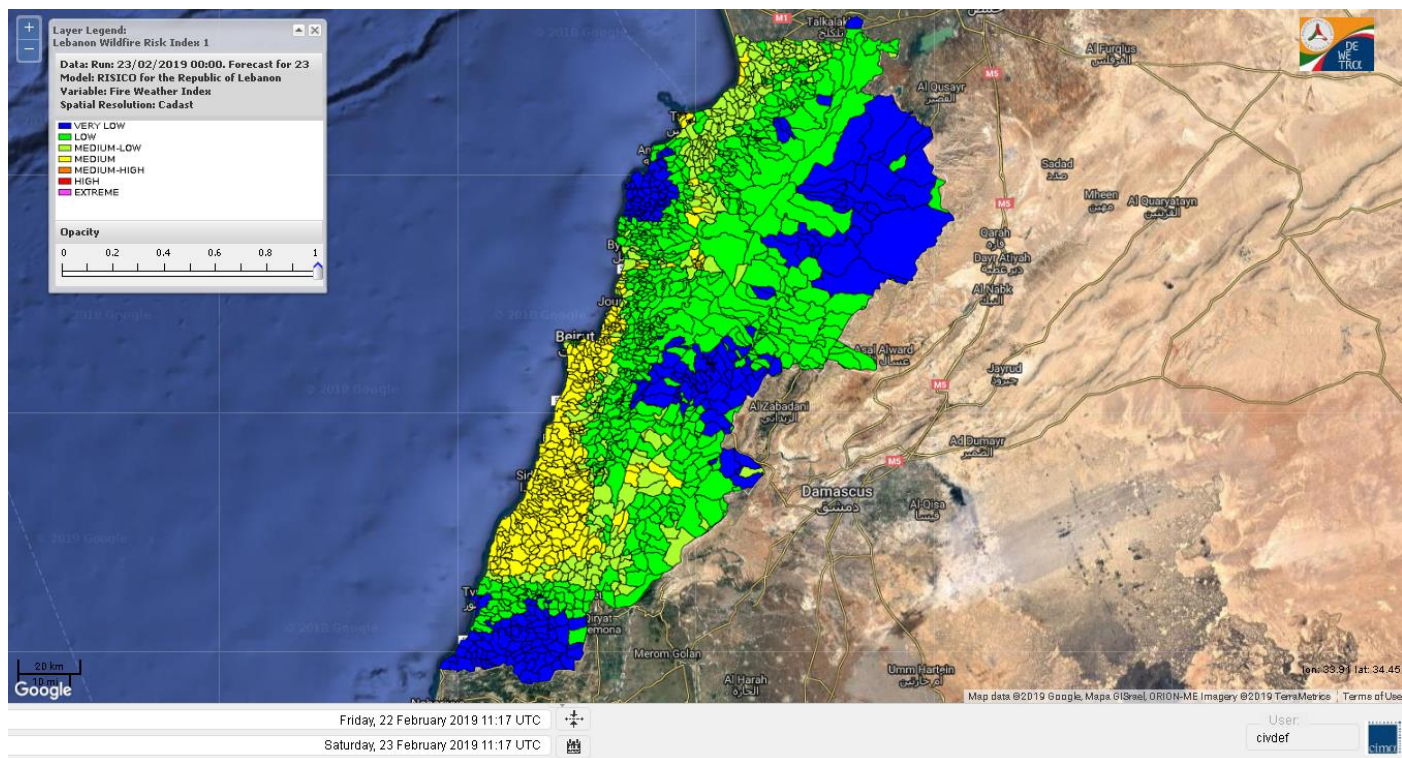


# Lebanon humidity for 23 February 2019

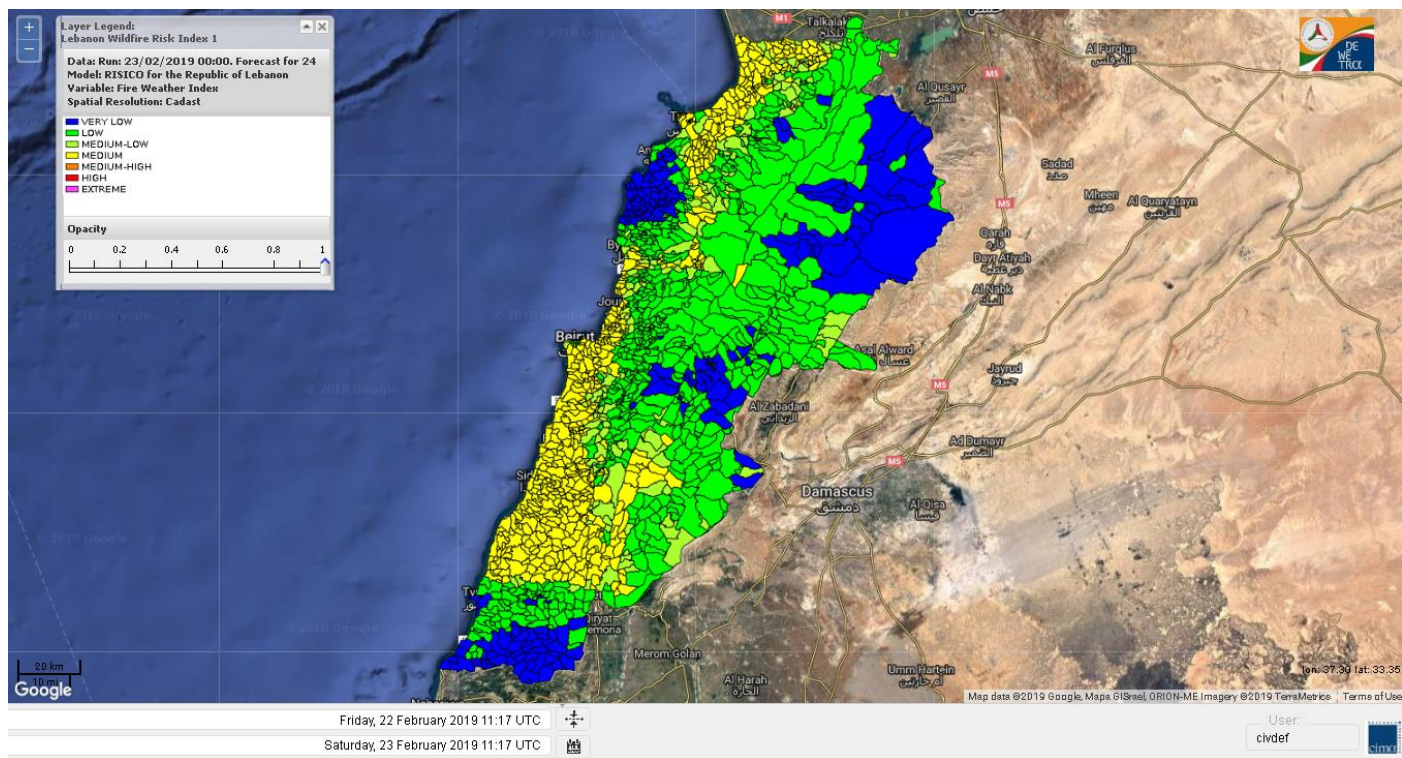




# Lebanon for 23 February 2019

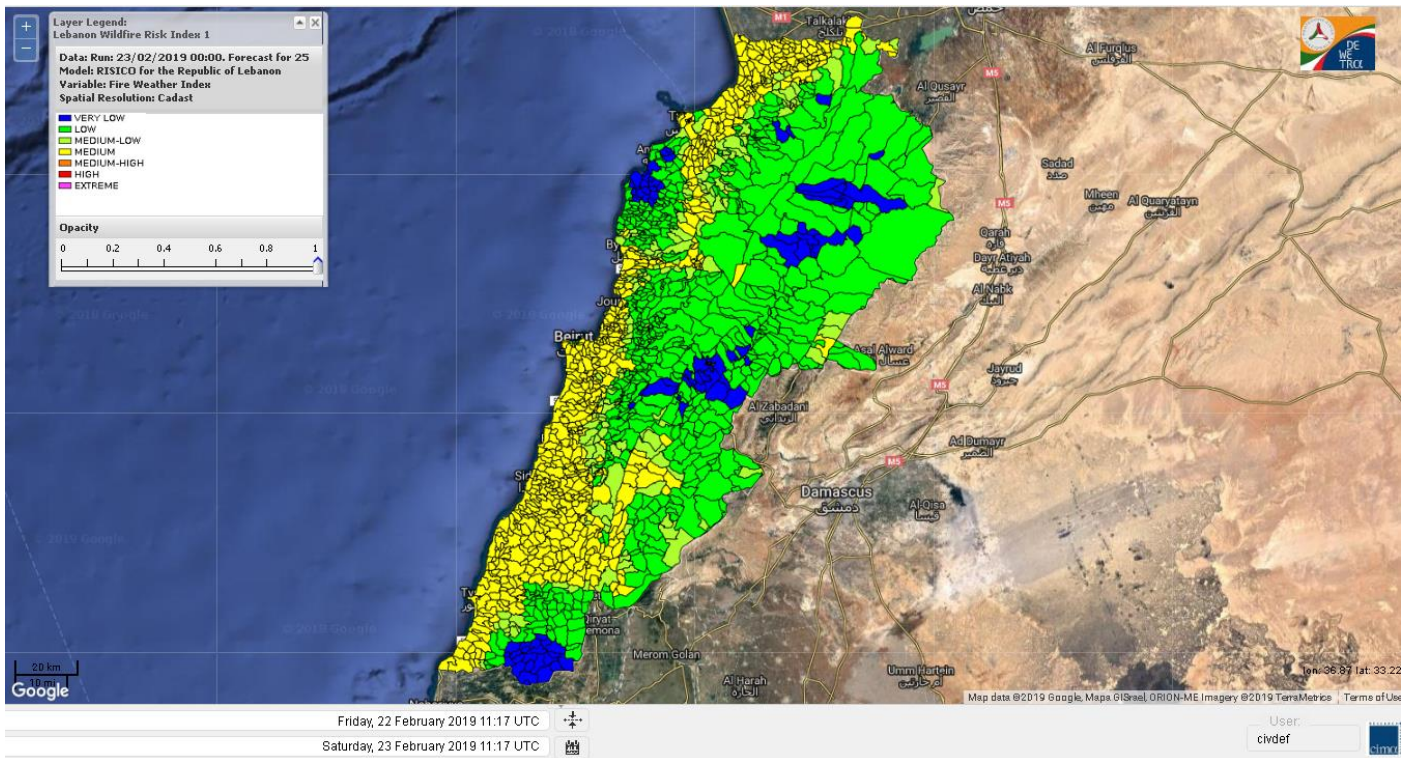


# Lebanon for 24 February 2019

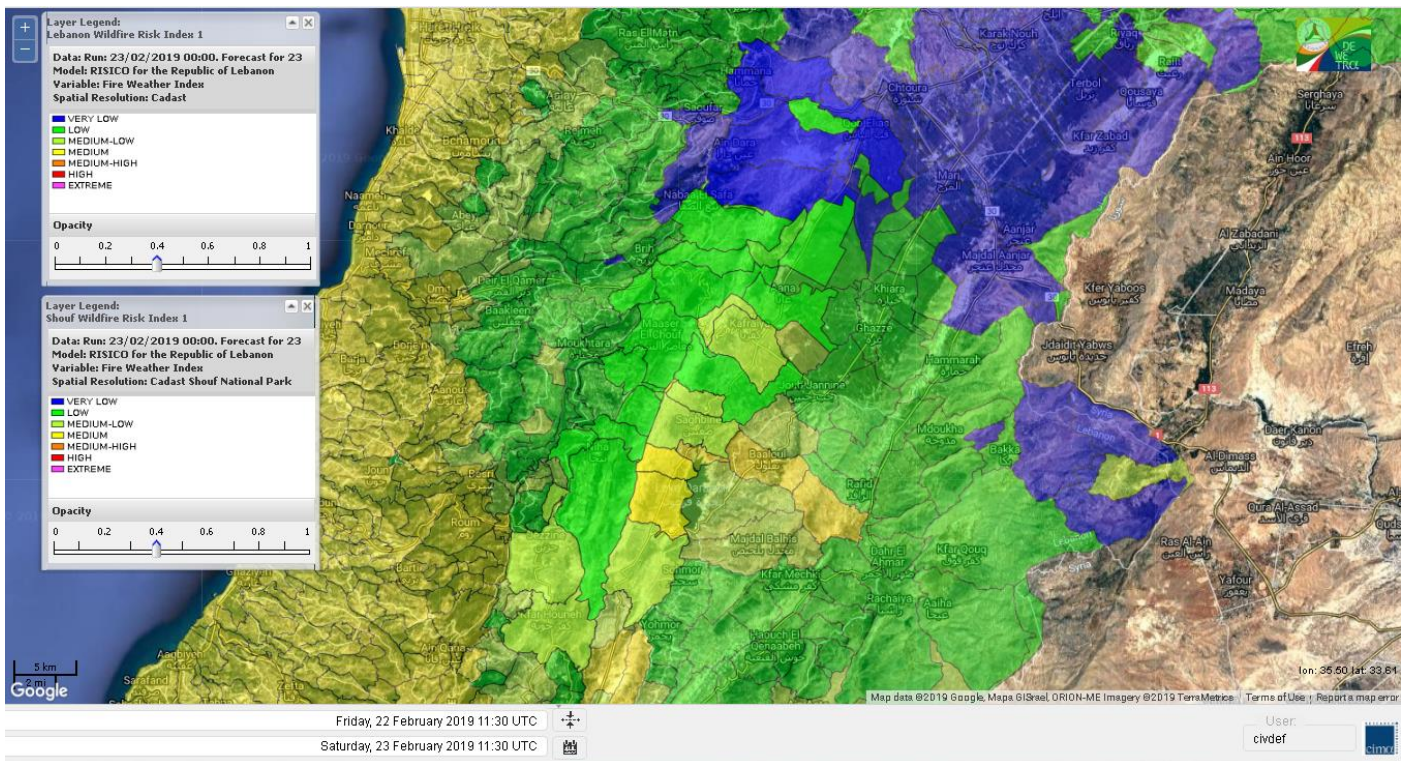




# Lebanon for 25 February 2019

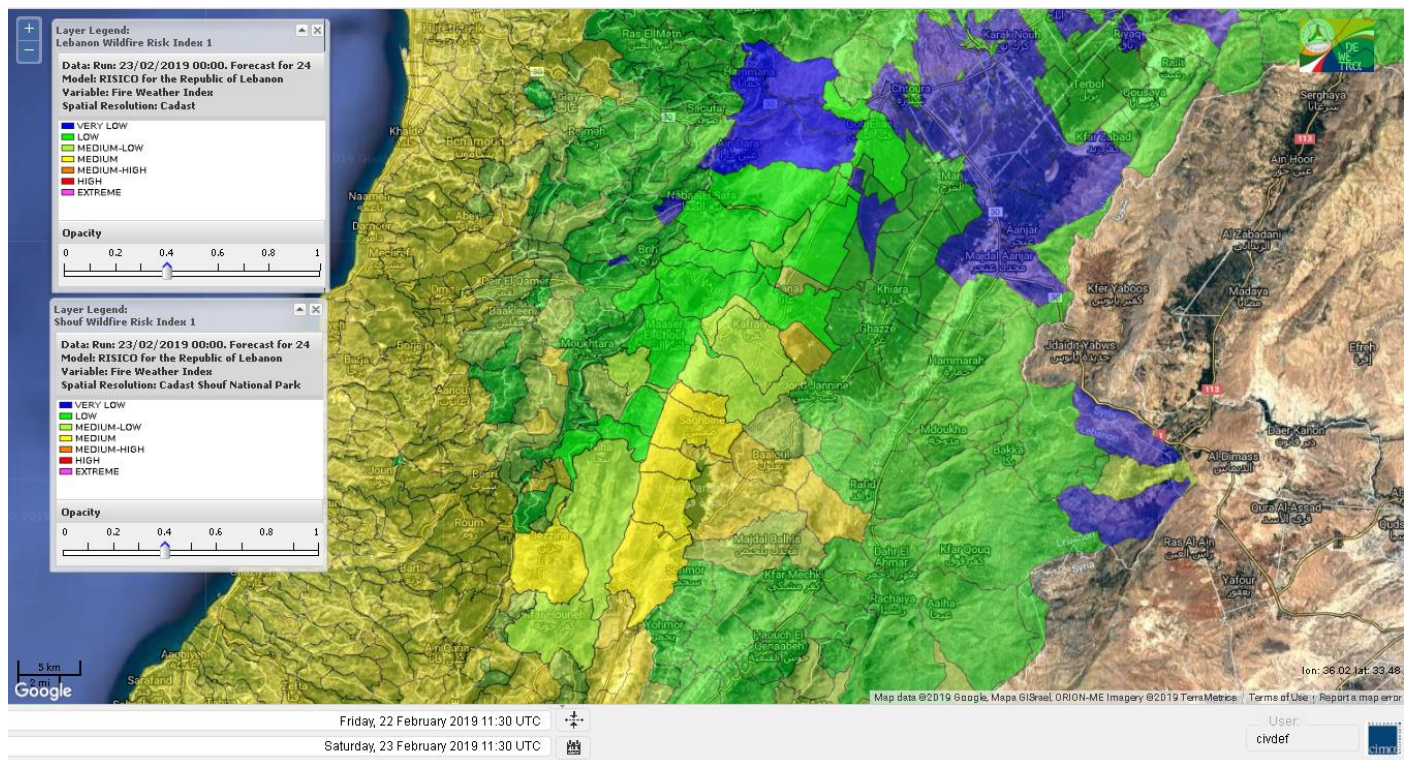


# Shouf Biosphere Reserve Forecast for 23 February 2019

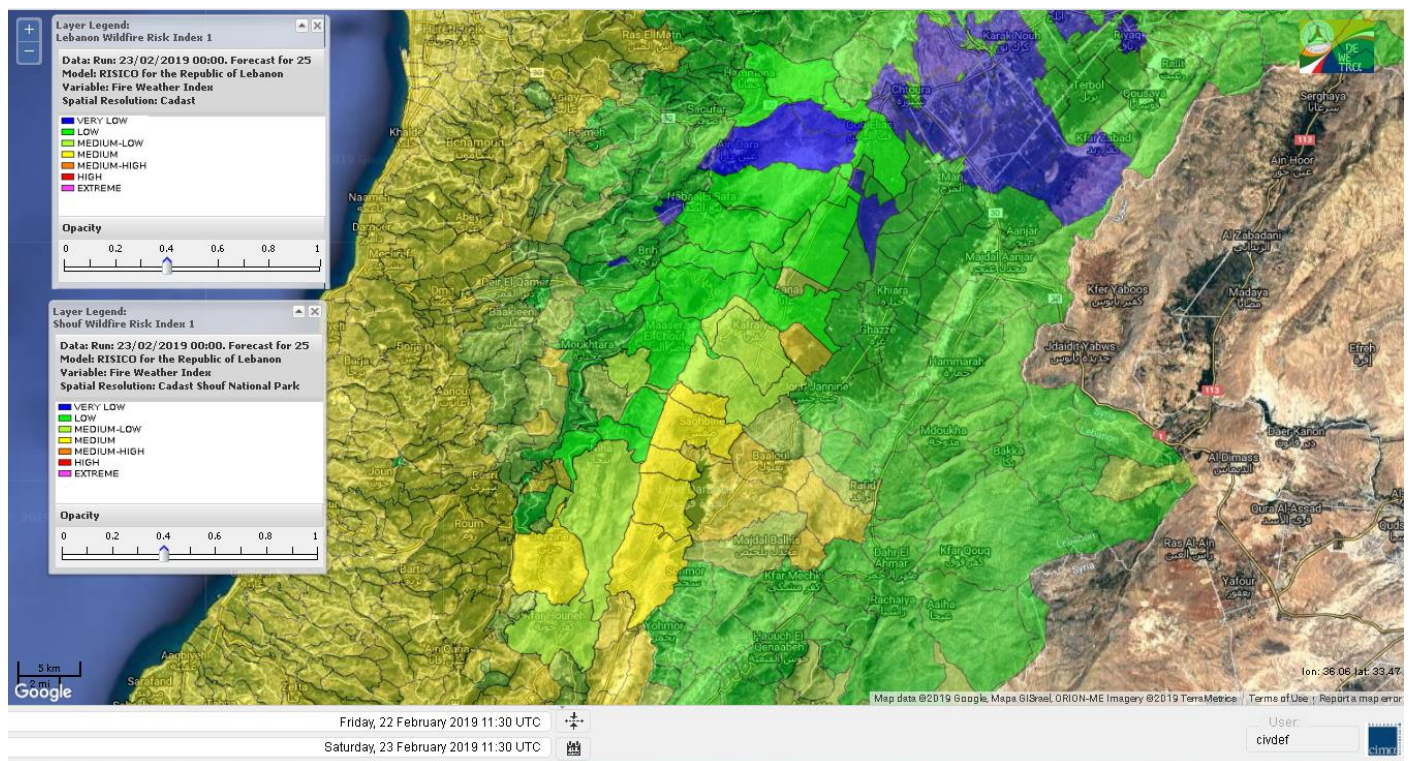




# Shouf Biosphere Reserve Forecast for 24 February 2019

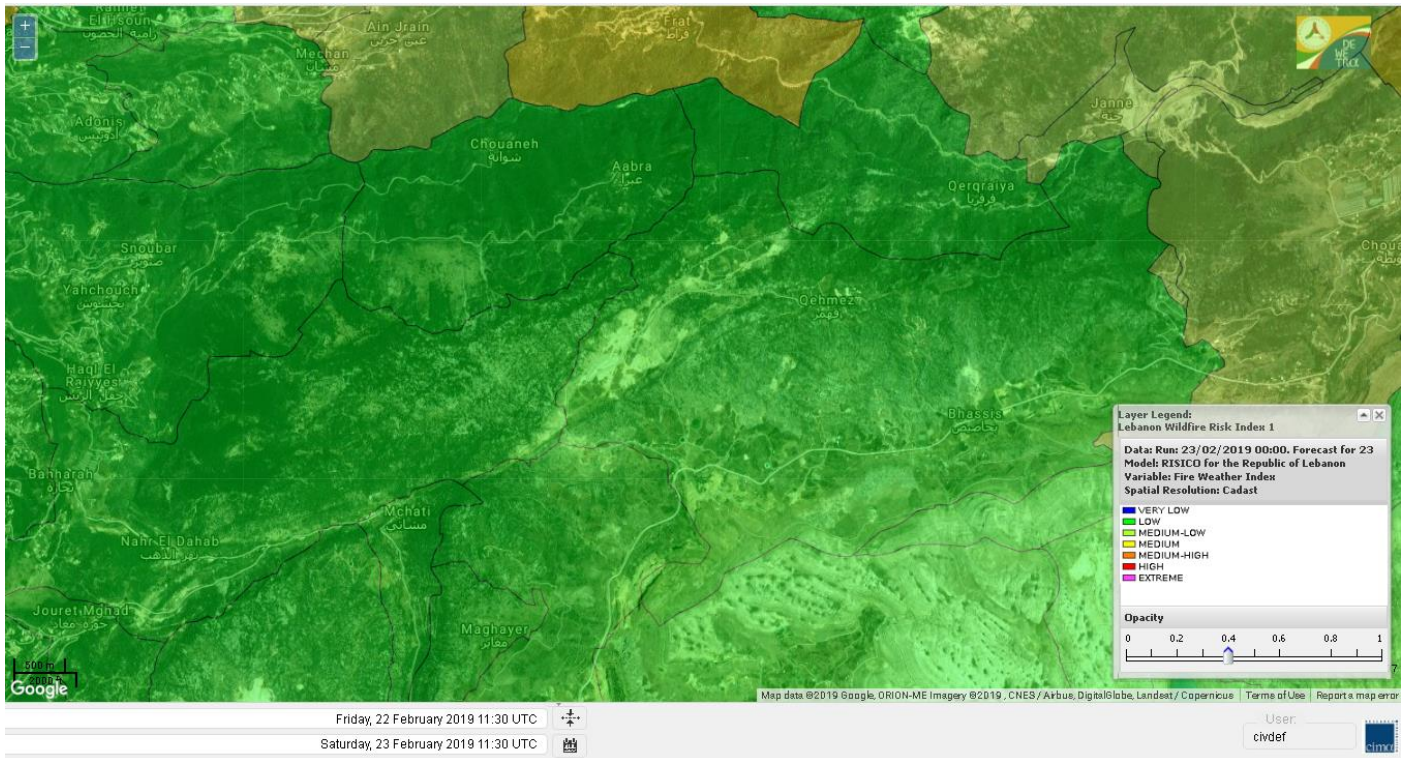


# Shouf Biosphere Reserve Forecast for 25 February 2019

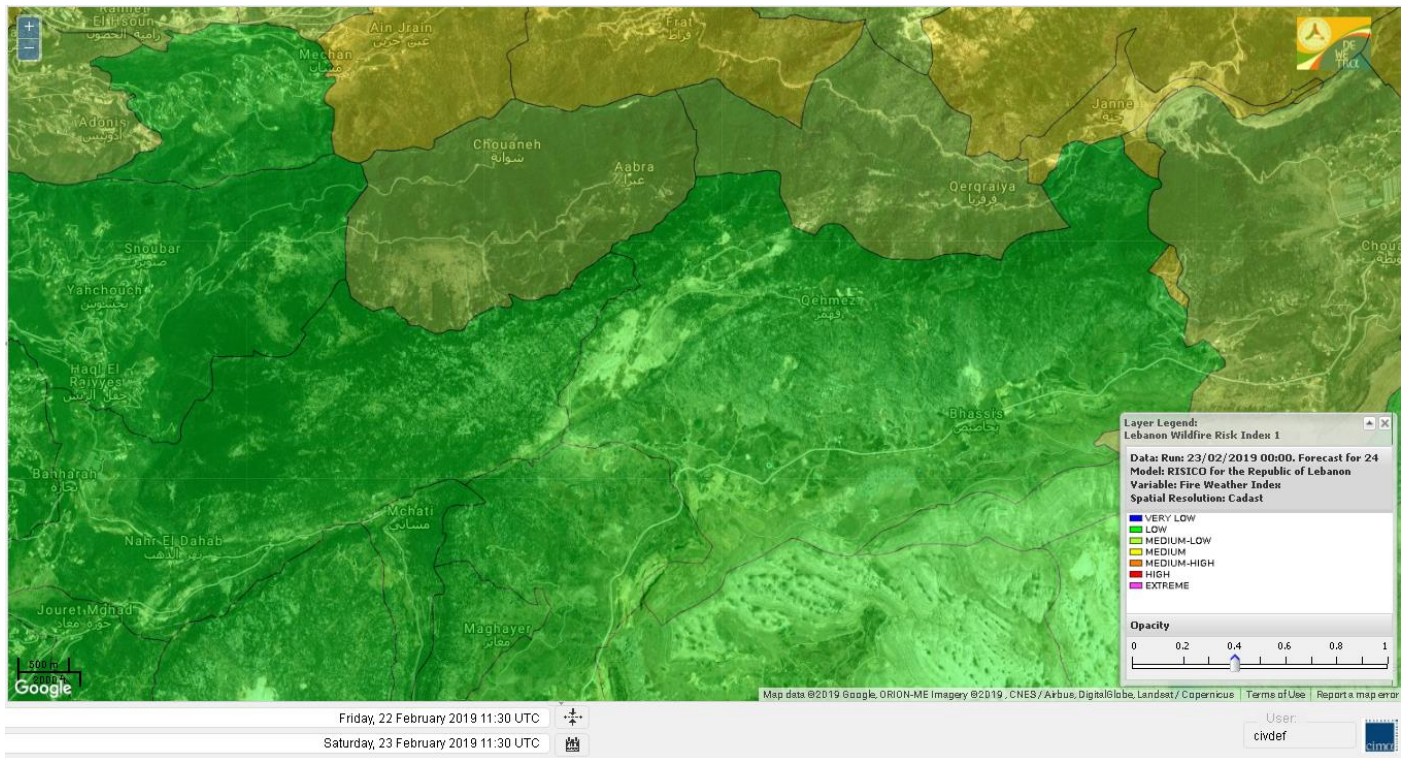




# Jabal Moussa Reserve Forecast for 23 February 2019

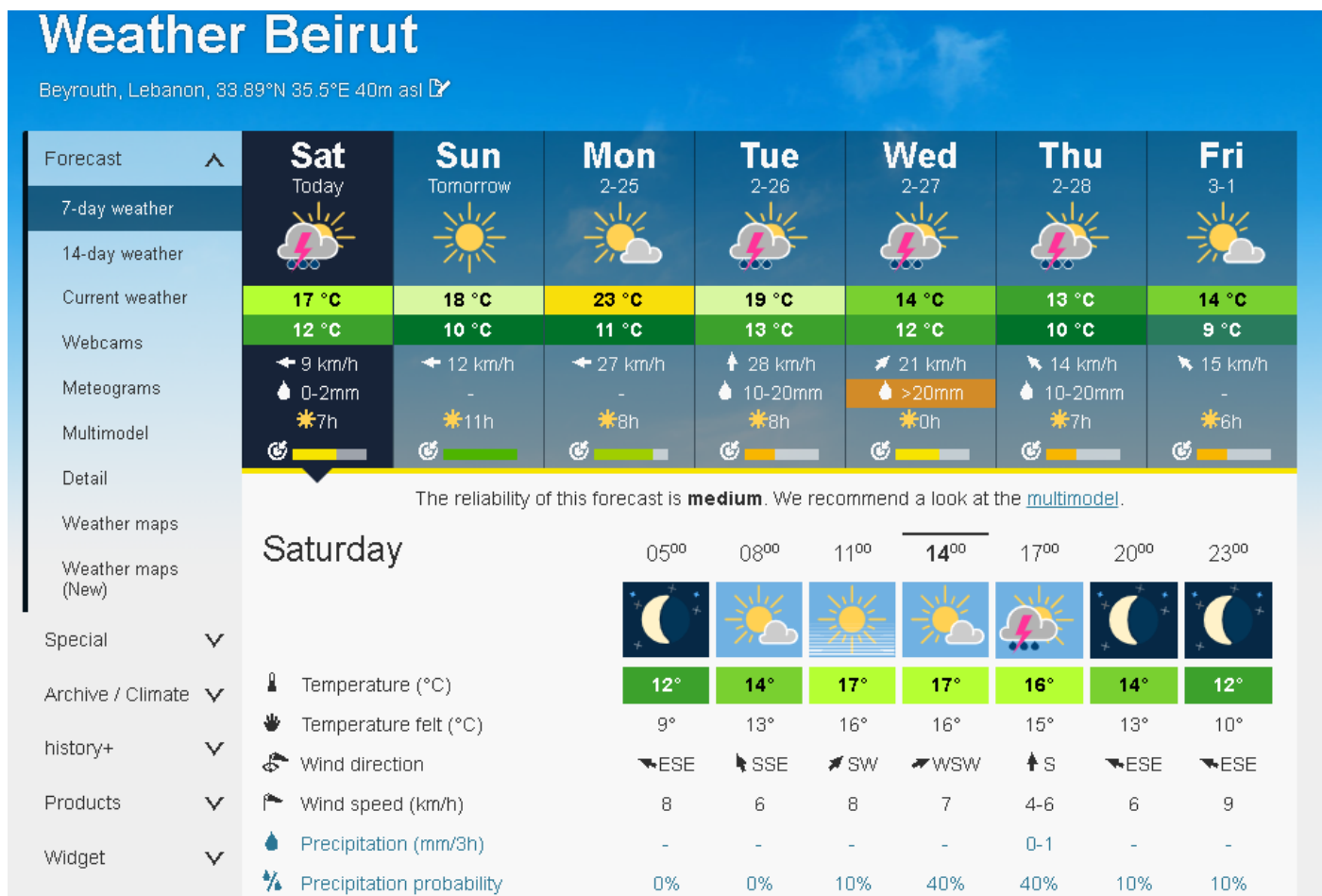
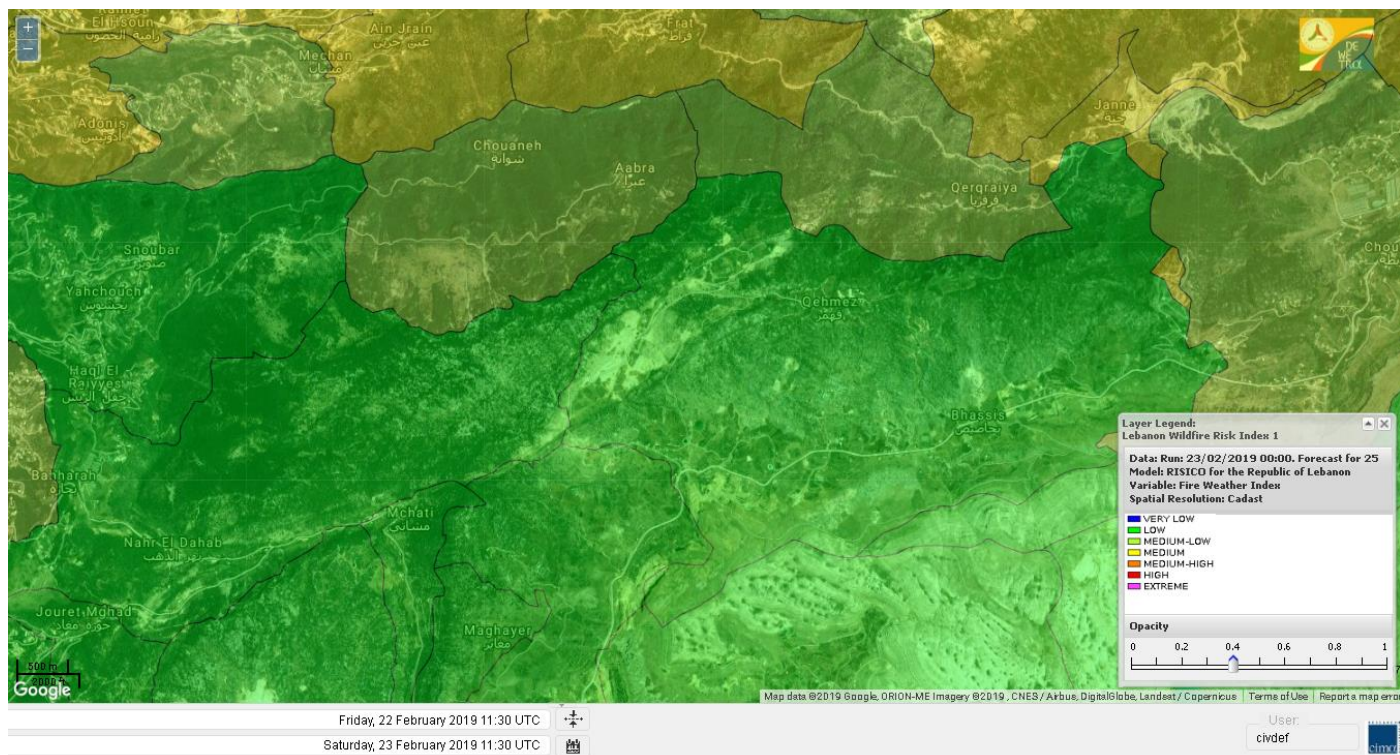


# Jabal Moussa Reserve Forecast for 24 February 2019





# Jabal Moussa Reserve Forecast for 25 February 2019





## Nord

### Koura

Municipality	23-Feb	24-Feb	25-Feb	Municipality	23-Feb	24-Feb	25-Feb	Municipality	23-Feb	24-Feb	25-Feb
Aaba	ML	M	M	Afsaddiq	L	VL	L	Ain Ekrine	ML	ML	M
Amioun	L	L	L	Anfeh	L	L	L	Badbhoun	VL	VL	L
Barghoun	VL	VL	L	Barsa	L	L	L	Batroumine	L	L	L
Bdebba	L	L	L	Bechmizine	L	VL	L	Bednaye El-Koura	VL	VL	VL
Bhabbouch El-Koura	L	L	ML	Bkeftine	ML	M	M	Bnehran	ML	ML	M
Bqaiia El-Koura	ML	M	M	Bsarma	ML	M	M	Btaaboura	VL	VL	VL
Bterram	L	L	L	Btouratij	ML	M	M	Bziza	L	L	L
Dar Beehtar	VL	VL	L	Dar Chmezzine	VL	VL	L	Deddeh	L	L	L
Deir El-Balamand	VL	VL	VL	Fih	L	VL	VL	Hraiche	L	L	L
Ijdaabrine	VL	VL	VL	Kaftoun	VL	VL	L	Kefraya El-Koura	VL	VL	VL
Kfarakka	L	L	M	Kfarhata	VL	VL	VL	Kfarhazir	VL	VL	L
Kfarkahel	ML	M	M	Kfarsaroun	L	L	L	Kosba	ML	M	M
Mejdel el-Koura	VL	VL	L	Nakhle	ML	ML	ML	Qalhat	VL	VL	VL
Ras Masqa	ML	ML	ML	Rechdibbine	M	M	M	Zakroun	VL	VL	L
Zgharta El-Mtaouile	L	L	ML								

### Bcharre

Municipality	23-Feb	24-Feb	25-Feb	Municipality	23-Feb	24-Feb	25-Feb	Municipality	23-Feb	24-Feb	25-Feb
Aabdine	ML	ML	ML	Bane	L	ML	ML	Barhelioun	ML	M	M
Bazouone	L	L	L	Becharre	L	L	L	Beit Menzer	ML	ML	ML
Billa	ML	ML	ML	Blaouza	ML	M	M	Bqaa Kafra	L	L	L
Bqerqacha	L	L	L	Breissat	ML	ML	ML	Dimane	L	ML	ML
Hadath El Jobbeh	ML	ML	ML	Hadchit	L	L	L	Hasroun	L	L	L
Mazraat Aassaf	M	M	M	Mazraat Bani Saab	M	M	M	Mchaa El-Jobbeh	L	VL	VL
Metrit	L	L	ML	Moghr El-Ahoual	ML	ML	ML	Ouadi Qannoubine	L	L	L
Qanat	ML	ML	ML	Qnayer	L	L	L	Tourza	ML	ML	ML

### Batroun

Municipality	23-Feb	24-Feb	25-Feb	Municipality	23-Feb	24-Feb	25-Feb	Municipality	23-Feb	24-Feb	25-Feb
Aabrine	VL	VL	VL	Aalali	L	VL	L	Aartiz	VL	VL	L
Abdelli	VL	VL	L	Ajdabra	VL	VL	VL	Assia	L	VL	L
Basbina	VL	VL	L	Batroun	VL	VL	L	Bcheleh	L	L	ML
Bechtoudar	L	L	L	Beit Chlala	ML	ML	M	Beit Kassab	L	L	L
Bijdarfil	VL	VL	VL	Bqesmaya	VL	VL	L	Chatine	L	ML	ML
Chebtin	VL	VL	L	Chekka	VL	VL	VL	Daael	L	VL	L
Dahr Abi Yaghi	L	VL	L	Daraya El-Batroun	VL	VL	L	Deir Billa	L	VL	L
Deir Kfifane	VL	VL	L	Deir Mar Youhanna EL	L	L	L	Deir Mar Youssef Jra	VL	VL	L
Douma	ML	M	M	Douq	VL	VL	L	Eddeh El-Batroun	VL	VL	L
Ftihat El-Batroun	VL	VL	L	Ghouma	VL	VL	L	Hadtoun	L	VL	L
Hamat	VL	VL	VL	Harbouna	VL	VL	VL	Hardine	ML	ML	M
Helta	VL	VL	L	Hery	VL	VL	VL	Jebba	VL	VL	L
Jrabta El-Batroun	VL	VL	L	Jrane El-Batroun	VL	VL	L	Kfar Aabida	VL	VL	L
Kfar Halda	L	L	M	Kfarb Shlaimane	VL	VL	L	Kfarhatna	VL	VL	L
Kfarhay	VL	VL	VL	Kfarhelos	VL	VL	VL	Kfifane	VL	VL	L



Kfour El Arabi	M	M	M	Koubba	VL	VL	L	Kour	VL	VL	VL
Mar Mama	L	VL	L	Masrah	L	VL	L	Mehmarch	L	VL	L
Mrah Chdid	VL	VL	L	Mrah El Ziyat	VL	VL	L	Mrah El-Hajj	L	VL	L
Nahle El-Batroun	L	VL	L	Niha El-Batroun	ML	ML	M	Ouajh El-Hajjar	VL	VL	VL
Ouata Houb	ML	M	M	Qatnaaoun	VL	VL	VL	Racha	L	VL	L
Rachana	VL	VL	L	Rachkida	VL	VL	VL	Ram El-Batroun	L	VL	L
Ras Nahhach	VL	VL	VL	Selaata	VL	VL	L	Sghar	VL	VL	L
Smar Jbayl	VL	VL	L	Sourat El-Batroun	VL	VL	L	Tannourine El-Faouqa	L	L	L
Tannourine Et-Tahta	ML	M	M	Thoum	VL	VL	L	Toula El-Batroun	VL	VL	L
Zan	VL	VL	L								

## Zgharta

Municipality	23-Feb	24-Feb	25-Feb	Municipality	23-Feb	24-Feb	25-Feb	Municipality	23-Feb	24-Feb	25-Feb
Aachach	ML	M	M	Aalma	ML	M	M	Aarde	ML	M	M
Aintourine	ML	ML	ML	Arabet Qozhaya	L	L	ML	Arde	ML	M	M
Arjis	ML	M	M	Asnoun	ML	M	M	Ayto	L	L	L
Basloukit	L	ML	ML	Bchannine	ML	M	M	Besebeel	ML	M	M
Bhairret Toula	L	ML	ML	Bnachee	ML	M	M	Boussit	ML	M	M
Danha	ML	M	M	Daraiya Zgharta	ML	M	M	Deir Jdeide	ML	M	M
Ehden	L	L	L	Halan	ML	M	M	Hariq Zgharta	ML	M	M
Houakir	L	ML	ML	Hraiqis	ML	M	M	laal	ML	M	M
Ijbaa	L	ML	ML	Karm Saddeh	L	L	ML	Kfarchakhna	ML	M	M
Kfardlaqous	ML	M	M	Kfarfou	ML	M	M	Kfarhata Zgharta	ML	M	M
Kfarhoura	ML	M	M	Kfarsghab	L	L	L	Kfaryachit	ML	M	M
Kfarzaina	ML	M	M	Khaldiye	ML	M	M	Mazraat Ajbeaa	ML	M	M
Mazraat Et-Teffah	L	L	L	Mazraat Jneid	ML	M	M	Mejdlaiya Zgharta	L	ML	ML
Merh Kfarsghab	ML	M	M	Miryata	ML	M	M	Miziara	L	L	ML
Mzraat Kefraya	ML	M	M	Qorah Bach	ML	M	M	Rachiine	ML	M	M
Ras Kifa	ML	M	M	Sakhra	ML	M	M	Sebhel Zgharta	ML	ML	ML
Serhel	L	L	L	Tallet Zgharta	ML	M	M	Toula Zgharta	L	L	L
Zgharta	ML	M	M								

## Minieh-Denniye

Municipality	23-Feb	24-Feb	25-Feb	Municipality	23-Feb	24-Feb	25-Feb	Municipality	23-Feb	24-Feb	25-Feb
Aasaymout	VL	VL	L	Aaymar	L	ML	ML	Aazki	ML	M	M
Ain El-Tineh-Miniyeh	L	L	L	Assoun	L	ML	ML	Bakhaaoun	L	ML	ML
Bchennata	L	L	L	Bechehhara	L	L	L	Beddawi	L	L	L
Behouaita	L	L	L	Beit El Foqss	L	L	L	Beit Haouik	ML	ML	ML
Beit Zoud	L	L	L	Bekaasafrine	L	L	L	Borj El Yahoudiyeh	ML	M	M
Bqarsouna	L	L	L	Btermaz	L	L	L	Debaael	L	L	L
Deir Ammar	ML	M	M	Deir Nbouh	L	ML	ML	Haouaret-Miniyeh	L	L	L
Haql el Azimeh	L	L	L	Harf El Siyad	L	L	L	Hazmiye-Miniyeh	L	L	L
Izal	L	ML	ML	Jarjour	L	L	L	Jayroun	VL	VL	VL
Kahf El-Malloul	L	L	ML	Karm El-Moher	L	L	ML	Kfar Binine	L	L	L
Kfarchalane	L	ML	ML	Kfarhabou	ML	M	M	Kharroub-Miniyeh	ML	ML	M
Mazraat El-Kreme	L	L	L	Mazraat Ketrane	L	L	L	Merkebta	ML	M	M
Minyeh	ML	M	M	Mrah El Sfirat	L	L	L	Mrah Sraj	L	L	L
Mrebbine	L	L	L	Nabi Youcheaa	ML	M	M	Nemrine	L	L	L



Qarhaiya	L	L	L	Qarne	VL	VL	L	Qarsita	L	L	L
Qattineh-Miniyeh	L	L	L	Qemmamine	VL	VL	VL	Qraine	L	L	L
Raouda-Aadoua	ML	M	M	Rihaniyet-Miniyeh	ML	M	M	Sfireh	L	L	L
Sir Ed-Danniyeh	L	L	L	Tarane	L	L	L	Terbol-Miniyeh	ML	M	M
Zaghartaghriane	L	ML	ML	Zouq Bhannine	ML	M	M				

## Nabatiye

### Nabatiye

Municipality	23-Feb	24-Feb	25-Feb	Municipality	23-Feb	24-Feb	25-Feb	Municipality	23-Feb	24-Feb	25-Feb
Aabba	M	M	M	Aazzi	M	M	M	Adchit El-Chqif	ML	M	M
Ain Bou Swar	M	M	M	Ain Kana	M	M	M	Ali El-TaHER	M	M	M
Ansar	M	M	M	Arab Salim	M	M	M	Arnoun	ML	M	M
Bfaroue	M	M	M	Breyqaah	M	M	M	Charqiyeh	M	M	M
Choukine	ML	M	M	Deir El Zahrani	M	M	M	Doueir El-Nabatiyeh	M	M	M
Habbouch El-Nabatiye	M	M	M	Hamra El-Nabatiyeh	ML	M	M	Harouf El-Nabatiyeh	M	M	M
Hmaile	M	M	M	Houmin El Faouqa	M	M	M	Houmin El Tahta	M	M	M
Jarjough	M	M	M	Jbaah El-Nabatiyeh	M	M	M	Jebchit	M	M	M
Kfar Djal El-Nabatiy	ML	M	M	Kfar Remmane	M	M	M	Kfar Sir	ML	M	M
Kfar Tebnit	ML	M	M	Kfarfila	M	M	M	Kfour El-Nabatieh	M	M	M
Mayfadoun	ML	M	M	Mazraat Bsaffour	M	M	M	Mazraat Chalbaal	M	M	M
Mazraat Dmoul	M	M	M	Mazraat El Khreibeh	M	M	M	Mazraat El-Bayad El-	M	M	M
Mazraat Kfarjaouz	M	M	M	Mazraat Qalaat Meiss	M	M	M	Nabatiyeh El-Fawka	ML	M	M
Nabatiyeh Et-Tahta	M	M	M	Namiriyyeh	M	M	M	Qaaqaaiyet El Jisr	M	M	M
Qossaiyeh El-Nabatiy	ML	M	M	Roumine	M	M	M	Sarba El-Nabatieh	M	M	M
Sir El-Gharbiyeh	ML	M	M	Toul	M	M	M	Yehmor El-Nabatiyeh	ML	M	M
Zaoutar El Charkiyeh	ML	M	M	Zaoutar El-Gharbiyeh	ML	M	M	Zebdine El-Nabatiyeh	M	M	M
Zefta	M	M	M								

### Hasbaiya

Municipality	23-Feb	24-Feb	25-Feb	Municipality	23-Feb	24-Feb	25-Feb	Municipality	23-Feb	24-Feb	25-Feb
Ain Jarfa	L	L	L	Abou Qamha	L	ML	ML	Ain Qania	L	L	L
Bourghos	ML	M	M	Chebaa	L	L	L	Chouaya Hasbaya	L	L	L
Dellafeh	ML	M	M	Fardiss Hasbaiya	ML	ML	ML	Hasbaya	L	L	L
Hbariyeh	L	L	L	Kaoukaba Hasbaiya	ML	M	M	Kfar Chouba	L	L	L
Kfar Hamam	L	ML	ML	Kfeir El-Zait	L	L	L	Khalwat Hasbaya	L	L	L
Khreibet Hasbaiya	ML	M	M	Majidiyeh Hasbaiya	ML	M	M	Marj Ez-Zhour (Haouc	L	L	L
Meri	ML	M	M	Mimass	L	L	L	Rachaiya El-Fokhar	ML	ML	ML
Salaiyeb	ML	M	M								

### Marjayoun

Municipality	23-Feb	24-Feb	25-Feb	Municipality	23-Feb	24-Feb	25-Feb	Municipality	23-Feb	24-Feb	25-Feb
Aalmane Marjaayoun	L	L	ML	Aamra	L	L	L	Adayseh Marjaayoun	VL	VL	L
Adchit El-Koussair	L	L	L	Ain Aarab Marjaayoun	ML	M	M	Bani Haiyann	VL	VL	L
Blatt Marjaayoun	ML	M	M	Blida	VL	VL	L	Borj El-Moulouk	ML	M	M
Boueyda Marjaayoun	ML	M	M	Deir Mimass	ML	ML	ML	Deir Siriane	L	ML	ML
Dibbine	ML	M	M	Ebel El Saqi	ML	M	M	Houla	VL	VL	L
Houra	ML	M	M	Kfar Kila	L	L	L	Khiam Marjaayoun	L	ML	ML



Klayaa	ML	M	M	Majdel Selem	VL	VL	L	Marjaayoun	ML	M	M
Markaba	VL	VL	L	Mays El-Jabal	VL	VL	L	Mazraat Doumiat	ML	M	M
Mazraat Sarada	L	L	L	Mhaibib	VL	VL	L	Qabrikha	L	L	L
Qantara	L	L	L	Rab El-Thalathine	VL	VL	L	Saouaneh Marjayoun	VL	VL	L
Talloussa	VL	VL	L	Taybeh Matjaayoun	L	L	L	Touline	VL	VL	L

## Bent Jbail

Municipality	23-Feb	24-Feb	25-Feb	Municipality	23-Feb	24-Feb	25-Feb	Municipality	23-Feb	24-Feb	25-Feb
Ain-Ebel	VL	VL	VL	Aitaroun	VL	VL	VL	Aynata Bint Jbeil	VL	VL	VL
Ayta El-Chaeb	VL	VL	VL	Ayta El-Jabal	VL	VL	VL	Beit Lif	VL	VL	VL
Beit Yahoun	VL	VL	VL	Bint Jbeil	VL	VL	VL	Borj Qalaway	VL	VL	L
Braachit	VL	VL	L	Chakra	VL	VL	L	Debel	VL	VL	VL
Deir Antar	VL	VL	L	Froun	L	L	L	Ghandouriyeh Bint Jb	L	L	L
Hanine	VL	VL	VL	Hariss	VL	VL	L	Hdatha	VL	VL	VL
Jmeyjmeh	VL	VL	L	Kafra Bint Jbeil	VL	VL	L	Kfar Dounine	VL	VL	L
Khirbet Selm	VL	VL	L	Kounine	VL	VL	VL	Maroun El Ras	VL	VL	VL
Qalaway	VL	VL	L	Qaouzah	VL	VL	VL	Qatmoun	VL	VL	VL
Ramya Bint Jbeil	VL	VL	VL	Rchaf	VL	VL	VL	Rmeich	VL	VL	VL
Safad Al Battikh	VL	VL	L	Salhaneh	VL	VL	VL	Serbine	VL	VL	VL
Sultanieh Bint Jbeil	VL	VL	L	Tibnine	VL	VL	L	Tiri	VL	VL	VL
Yaroun	VL	VL	VL	Yater	VL	VL	VL				

## Mont Liban

### Jbail

Municipality	23-Feb	24-Feb	25-Feb	Municipality	23-Feb	24-Feb	25-Feb	Municipality	23-Feb	24-Feb	25-Feb
Aabeydat	L	VL	L	Aalita	M	M	M	Aamchit	L	L	ML
Aarab El-Lahib	ML	M	M	Aarasta	M	M	M	Adonis Jbeil	L	ML	M
Afqa Jbeil	L	L	L	Ain El Delbeh Jbeil	ML	ML	M	Ain El-Ghouyba	M	M	M
Ain Jrain	ML	M	M	Ain Kfah	L	VL	L	Almat El Chemaliyat	L	L	L
Almat El-Jenoubiya	L	L	L	Aqoura	L	L	L	Bayzoun	ML	M	M
Bchille Jbeil	L	ML	M	Bechtida	L	L	L	Behdaydat	L	VL	L
Beit Habbaq	L	VL	L	Bejjeh	L	VL	L	Bekhaaz	L	VL	L
Berbara Jbeil	L	VL	L	Bintael	L	L	L	Birket Hjoula	L	VL	L
Blatt Jbeil	ML	M	M	Boulhos	L	ML	ML	Breyj Jbeil	L	L	ML
Chamat	L	L	L	Chikhane	L	L	M	Chmout	VL	VL	L
Edeh Jbeil	L	L	L	Ehmej	L	ML	ML	Fatre	M	M	M
Ferhet	ML	M	M	Fghal	VL	VL	L	Frat	M	M	M
Ghabat	M	M	M	Ghalboun	L	L	L	Gharzouz	L	L	L
Ghofrine	L	L	ML	Habil	L	VL	L	Halate	ML	M	M
Haqel	L	VL	L	Hbaline	L	L	ML	Hboub	ML	M	M
Hdeine	M	M	M	Hema Er-Rehban	ML	M	M	Hema Mar Maroun Aann	ML	M	M
Hjoula	L	L	ML	Hosrayel	ML	ML	M	Hsarat	L	L	ML
Hsoun	L	ML	M	Jaj	L	L	ML	Janne	ML	M	M
Jbeil	ML	ML	M	Jeddeyel Jbeil	L	L	ML	Jlisse	L	ML	M
Jouret El-Qattine	L	L	ML	Kfar Baal Annaya	L	L	ML	Kfar Kidde	L	VL	L
Kfar Kouas	L	L	ML	Kfar Mashoun	L	VL	L	Kfoun	L	VL	L

Kharbe Jbeil	L	VL	L	Laqlouq	ML	M	M	Lassa	ML	ML	ML
Lehfed	L	L	L	Maad	L	VL	L	Mar Sarkis	M	M	M
Mastita	L	ML	M	Mayfouq	L	VL	L	Mazraat El Siyad	M	M	M
Mazraat El-Maaden	L	L	L	Mechane	L	L	ML	Mechmech Jbeil	L	L	L
Mehrin	ML	M	M	Mejdel El-Akoura	ML	ML	ML	Mghayreh Jbeil	M	M	M
Mounsef	L	L	L	Nahr Ibrahim	M	M	M	Qahmez	L	L	L
Qartaba	ML	M	M	Qartaboun	L	ML	M	Qattara Jbeil	L	VL	L
Qorqraya	L	ML	ML	Ramout	L	VL	L	Ras Osta	L	L	ML
Rihane Jbeil	L	L	L	Sakiet El-Khayt	L	VL	L	Saqi Richmaya	L	L	ML
Sebrine	L	L	ML	Seraita	M	M	M	Souane Jbeil	ML	ML	ML
Tadmor	M	M	M	Tartej	L	ML	M	Torzaiya	L	ML	ML
Yanouh Jbeil	M	M	M	Zibidine Jbeil	ML	ML	M				

## El Metn

Municipality	23-Feb	24-Feb	25-Feb	Municipality	23-Feb	24-Feb	25-Feb	Municipality	23-Feb	24-Feb	25-Feb
Aain El-Qabu	VL	VL	VL	Aain El-Qach	L	L	L	Aain El-Teffaha	L	L	L
Aain el-Safssaf El-M	L	L	L	Abou Mizane	L	ML	ML	Ain Aar	ML	M	M
Ain Alaq	L	L	M	Ain El-Kharroube	L	L	L	Ain El-Sendiane	L	L	L
Ain El-Zeitoune	VL	VL	L	Ain Saadeh	M	M	M	Aintoura El-Matn	VL	VL	VL
Amaret Chalhoub	M	M	M	Antelias	M	M	M	Atchaneh	L	L	M
Ayroun	L	L	L	Baabdat	L	L	L	Baouchariyeh	M	M	M
Baskinta	L	L	L	Beit Chabab	L	ML	ML	Beit El-Chaar	M	M	M
Beit El-Kekko	ML	M	M	Beit Mery	M	M	M	Bhersaf	L	L	ML
Bikfaya	L	L	L	Biyakout	M	M	M	Bnabil	L	L	L
Bourj Hammoud	M	M	M	Bqennaya	M	M	M	Broummana El-Matn	L	L	M
Bsalim	M	M	M	Bsifrine	L	L	L	Bteghrine	L	L	L
Chaouiye	L	ML	M	Chouaya El-Matn	L	L	L	Choueir	L	L	L
Chrine	L	L	L	Dahr El Sawan El-Mat	L	L	ML	Daychouniyeh	M	M	M
Dbayeh	M	M	M	Deir Chamra	L	L	L	Deir Mar Abda el Mch	M	M	M
Deir Mar Roukouz	M	M	M	Deir Tamiche	M	M	M	Dik El-Mehdi	M	M	M
Dikwaneh	M	M	M	Douar El-Matn	L	L	L	Fanar	M	M	M
Fraike	ML	M	M	Haret El-Ballaneh	M	M	M	Hbous	ML	ML	M
Himlaya	L	L	L	Jal El Did	M	M	M	Jdeideh El-Metn	M	M	M
Jouar El-Matn	L	L	L	Jouret El-Ballout	ML	M	M	Kaaqour	L	L	L
Kfar Aaqab	L	L	L	Kfertay El-Matn	L	L	L	Khenchara	L	L	L
Khillet El-Mtain	L	L	L	Konnabat Broummana	ML	ML	M	Konnabat Salima	L	L	L
Machraah El-Matn	L	L	L	Majdel Tarchich	VL	VL	VL	Majzoub	M	M	M
Mansouriyeh El-Metn	M	M	M	Mar Boutros Karm Et-	L	L	L	Mar Chaya et Mzekke	L	L	M
Mar Moussa Ed-Douar	L	L	L	Marjaba	L	L	L	Masqa	L	L	ML
Mayasse	L	L	L	Mazraat Deir Aoukar	M	M	M	Mazraat El-Hadirat	M	M	M
Mazraat Yachouh	M	M	M	Mchikha	L	L	L	Menqlet Mezher	M	M	M
Mhaydseh Matn	L	L	L	Mkalles	M	M	M	Mrouj	VL	VL	L
Mtain	L	L	L	Mtaylor	M	M	M	Nabay	M	M	M
Naccache	M	M	M	Ouadi Chahine	L	L	L	Ouadi El-Karm El-Mat	L	L	L
Ouata El-Mrouj	VL	VL	L	Ouyoun El-Matn	L	L	ML	Qornet Chehwan	ML	M	M
Qornet El-Hamra	M	M	M	Roumieh	M	M	M	Sfeilet Bikfaya	L	L	L
Sinn El-Fil	M	M	M	Zabbougha	L	L	L	Zalqa	M	M	M



Zarouon	L	L	L	Zekrite	M	M	M	Zighrine El-Matn	L	L	L
Zouk El-Khrab	M	M	M								

## Chouf

Municipality	23-Feb	24-Feb	25-Feb	Municipality	23-Feb	24-Feb	25-Feb	Municipality	23-Feb	24-Feb	25-Feb
Aalmane El-Chouf	M	M	M	Aammq El-Chouf	L	ML	ML	Ain Ouzein	L	L	L
Ain Qani	L	L	L	Ain Zhalta	L	L	L	Ainbal	L	L	ML
Amatour	L	L	L	Anout	M	M	M	Atrine	L	ML	ML
Baadarane	L	ML	ML	Baaqline	L	ML	ML	Baasir	M	M	M
Barja	M	M	M	Barouk	L	L	L	Bater	L	L	L
Batloun	L	L	L	Bayqoun	ML	M	M	Bchetfine	ML	M	M
Beiteddine	L	L	L	Benouati Ech-Chouf	M	M	M	Berjein	M	M	M
Bireh et Mtalleh	VL	VL	VL	Biret El-Chouf	L	L	L	Bkechtine Ouel Mchei	M	M	M
Bkifa El-Chouf	M	M	M	Botme	L	L	L	Bqaiaa Ech-Chouf	M	M	M
Bsaba El-Chouf	L	ML	ML	Chammis El-Chouf	M	M	M	Chehim	M	M	M
Chemaarine	M	M	M	Chourit	L	L	L	Daher El-Chouf	M	M	M
Dalhoun	M	M	M	Damour	M	M	M	Daraya El-Chouf	M	M	M
Deir El-Moukhalles	M	M	M	Deir Baba	M	M	M	Deir Dourit	ML	M	M
Deir El-Qamar	L	ML	ML	Deir Kouche	L	ML	ML	Dibbieh	M	M	M
Dmit	M	M	M	Fouara Jaafar	VL	VL	VL	Fraidis El-Chouf	L	L	L
Ghabet Jaafar	M	M	M	Gharife	L	L	ML	Haret Jandal	L	L	L
Hasrout	M	M	M	Jadra	M	M	M	Jahlieh	ML	M	M
Jbeih El-Chouf	L	L	L	Jdeidet El-Chouf	L	L	L	Jiyeh	M	M	M
Jleilyeh	M	M	M	Jmailiyeh	M	M	M	Joun	M	M	M
Kahlounie El-Chouf	ML	M	M	Ketermaya	M	M	M	Kfar Faqoud	ML	M	M
Kfar Hamal	ML	M	M	Kfar Him	M	M	M	Kfar Katra	L	ML	ML
Kfar Niss	L	L	L	Kfar hay	L	L	L	Kfarnabrakh	L	L	L
Khirbet Bisri	M	M	M	Knayse El-Chouf	L	ML	ML	Maaniyeh	M	M	M
Maasser Beiteddine	L	ML	ML	Maasser El-Chouf	L	L	L	Majdalouna	M	M	M
Majdel El-Meouch	L	L	L	Mazboud	M	M	M	Mazmoura	M	M	M
Mazraat El Chouf	L	ML	ML	Mazraat El Daher	ML	M	M	Mazraat El-Douair	L	L	L
Mechref	M	M	M	Mghairie	M	M	M	Mghayrie El-Chouf	M	M	M
Moukhtara	L	L	L	Mrusti	L	L	L	Mtolle	ML	M	M
Naameh	M	M	M	Niha El-Chouf	L	ML	ML	Ouadi Abou Youssef	M	M	M
Ouadi Ed-Deir	M	M	M	Ouadi El-Sit	L	L	L	Ouadi bnehlay	M	M	M
Qraibeh	L	ML	ML	Qreiaa	M	M	M	Rmayle El-Chouf	M	M	M
Semqaniyeh	L	ML	ML	Sibline	M	M	M	Sirjbeil	M	M	M
Warhanieh	VL	VL	VL	Werdaniyeh	M	M	M	Zaarourieh	M	M	M

## Baabda

Municipality	23-Feb	24-Feb	25-Feb	Municipality	23-Feb	24-Feb	25-Feb	Municipality	23-Feb	24-Feb	25-Feb
Abadiyeh	ML	M	M	Ain Mouaffaq	L	L	ML	Araiya	M	M	M
Arbaniyeh	L	L	L	Arsoun	L	L	L	Baabda	M	M	M
Baalchmey	L	ML	ML	Bmaryam	L	L	L	Bourj El-Brajneh	M	M	M
Boutchay	M	M	M	Bsaba Baabda	M	M	M	Btekhney	L	L	L
Btibyat	L	L	L	Bzbeddine	L	L	L	Chbeniyeh	L	L	L
Chiyah	M	M	M	Chmeisset Baabda	L	L	L	Chouit	ML	ML	M
Deir El-harf	L	L	L	Deir Khouna	L	L	M	Dlaybeh	L	L	L

Falougha	VL	VL	L	Furn El-Chebbak	M	M	M	Hadath Beyrouth	M	M	M
Halaliyeh Baabda	L	L	ML	Hammana	VL	VL	L	Haret El Sett	M	M	M
Haret Hamze	L	L	L	Haret Hreik	M	M	M	Hasbaiya El-Metn	L	L	L
Jouar El-Hoz	L	L	L	Jouret Arsoun	L	L	L	Kfar Chima	M	M	M
Kfar Selouane	VL	VL	L	Khalouat Baabda	VL	VL	L	Kneisset Baabda	L	L	L
Laylakeh	M	M	M	Louayzeh Baabda	M	M	M	Merdache	M	M	M
Mzairaa Baabda	L	L	ML	Ouadi Chahrour El Ol	M	M	M	Ouadi Chahrour El So	M	M	M
Qalaa Baabda	VL	VL	L	Qhraybe Baabda	L	L	L	Qobbayaa	L	L	L
Qornayel	L	L	L	Qortada	L	L	M	Qrayeh Baabda	L	L	L
Qsaibeh Baabda	L	L	M	Qtale Baabda	L	L	L	Ras El Metn	L	L	M
Ras El-Haref	L	L	L	Rouayset El-Ballout	L	L	ML	Salima Baabda	L	L	L
Tahouitat El Ghadir	M	M	M	Tarchich	L	VL	VL	Zandouqa	L	L	M

## Aley

Municipality	23-Feb	24-Feb	25-Feb	Municipality	23-Feb	24-Feb	25-Feb	Municipality	23-Feb	24-Feb	25-Feb
Abey	ML	M	M	Aghmid	VL	VL	VL	Ain Dara	VL	VL	VL
Ain Drafil	M	M	M	Ain El Halazoun	L	L	L	Ain El-Rmmaneh	L	L	ML
Ain Jedideh	L	L	L	Ain Ksour	L	ML	M	Ain Onoub	M	M	M
Ain Traz	ML	ML	M	Ainab	L	ML	M	Aley	ML	ML	M
Aramoun	M	M	M	Aytat	M	M	M	Azouniyeh	VL	VL	VL
Baawerta	M	M	M	Badghan Oua Wadi Bad	L	L	L	Bassatine	ML	M	M
Bayssour	ML	ML	M	Bchamoun	M	M	M	Bdadoun	M	M	M
Behouara	L	ML	ML	Bennay	ML	M	M	Bhamdoun El-Dayaa	L	L	L
Bhamdoun El-Mhatta	L	L	L	Bkhechey	L	L	L	Bleibel	M	M	M
Bmakine	M	M	M	Bmhay	VL	L	L	Bouzrid	L	L	ML
Bserrine	L	L	L	Bsous	L	L	ML	Btalloun	L	L	L
Btater	L	L	L	Chanay	L	L	L	Charoun	VL	VL	VL
Chartoun	L	L	ML	Chemlane	ML	M	M	Chouifat El-Aamrous	M	M	M
Chouifat El-Oumara	M	M	M	Chouifat El-Quoubbe	M	M	M	Dakkoun	M	M	M
Deir Qoubel	M	M	M	Dfoun	ML	M	M	Douair El Remmaneh	L	L	ML
Ghaboun	ML	ML	M	Habramoun	L	L	L	Homs Oua Hama	L	L	L
Houmal	M	M	M	Jisr El Qadi	ML	M	M	Kehaleh	ML	ML	M
Keyfoun	ML	M	M	Kfar Aamey	L	ML	M	Kommatyeh	ML	ML	M
Maasrati	L	L	ML	Majdel Baana	L	L	L	Mansourieh et Ain El	L	L	ML
Mazraat El-Nahr	L	L	L	Mchakhte	VL	VL	VL	Mecherfeh	L	L	L
Mejdaya	ML	M	M	Mrayjat	VL	VL	VL	Ramliyah	L	L	L
Rechmaya	L	ML	ML	Rejmeh	L	L	ML	Remhala	ML	M	M
Rouayset El Neemane	L	L	ML	Saoufar	VL	VL	VL	Selfaya	ML	ML	M
Sirhmoul	M	M	M	Souq El Ghareb	ML	M	M	Taazanieh	L	L	L

## Kesrouane

Municipality	23-Feb	24-Feb	25-Feb	Municipality	23-Feb	24-Feb	25-Feb	Municipality	23-Feb	24-Feb	25-Feb
Achkout	L	L	L	Adma Oua Dafneh	M	M	M	Ain Ed-Delbe Kesroua	L	L	L
Ain El-Rihane	ML	M	M	Aintoura Kesrouane	M	M	M	Ajaltoun	L	L	L
Akaybeh Kesrouane	M	M	M	Aramoun Kesrouane	L	L	L	Azra ouel Ozor	L	L	ML
Ballouneh	L	ML	ML	Batha	L	L	L	Bekaatat Achkout	L	L	L
Bekaatat Kanaan	L	L	L	Bizhel	M	M	M	Bouar	ML	M	M
Bqaatouta	L	L	L	Bqaq Ed-Dine	M	M	M	Bzommar	L	L	L



Chahtoul	L	L	L	Chnaniir	L	L	L	Chouan	L	ML	ML
Daraya Kesrouane	L	L	L	Darououn	L	ML	M	Deir Baqlouch	L	L	ML
Dlebta	L	L	L	Eghbeh	L	L	L	Faraya	L	L	L
Fatka	L	ML	M	Feytroun	L	L	L	Ghazir	ML	ML	M
Ghbaleh Kesrouane	L	L	ML	Ghedrass	L	L	ML	Ghosta	L	L	L
Ghyneh	L	ML	M	Harharaya w Kattine	L	L	L	Harissa Kesrouane	ML	M	M
Hayata	L	L	L	Hosein	L	L	L	Hrajel	L	L	L
Jdeideh Ghazir	L	L	L	Jeita	M	M	M	Jounieh Ghadir	M	M	M
Jounieh Haret Sakhr	ML	M	M	Jounieh Salel Alma	ML	M	M	Jounieh Sarba	M	M	M
Jouret Bedrane	L	L	ML	Jouret Mhad	L	L	L	Jouret Termos	L	ML	ML
Kfar Debiane	L	L	L	Kfar Tay Kesrouane	VL	VL	VL	Kfar Yassine	ML	M	M
Kfour Kesrouane	L	ML	ML	Kharayeb Nahr Ibrahi	L	ML	ML	Klayaat Kesrouane	L	L	L
Maarab	L	L	L	Maaysra Kesrouane	L	ML	M	Mayrouba	L	L	L
Mazraat Er-Ras	M	M	M	Mazraat Mrah El-Mir	L	L	L	Mchaa El Ftouh	L	L	L
Mchaa Faraya	L	L	L	Mchaa Kfar Dibiane	L	VL	VL	Mghaer	L	L	L
Mradiyah	L	L	L	Nahr Ed-Dahab	L	L	L	Nammoura Kesrouane	L	L	ML
Ouata El Jaouz	L	L	L	Ouata Sillam	ML	M	M	Raachine	L	L	L
Rayfoun	L	L	L	Safra Kesrouane	M	M	M	Shayle Kesrouane	L	ML	ML
Tabarja	M	M	M	Yahchouch	L	L	L	Zaaytreh	L	L	ML
Zeytoun	L	ML	M	Zouk Mikael	M	M	M	Zouk Mosbeh	M	M	M

## Baalbek\_Hermel

### Baalbek

Municipality	23-Feb	24-Feb	25-Feb	Municipality	23-Feb	24-Feb	25-Feb	Municipality	23-Feb	24-Feb	25-Feb
Aadous	L	L	L	Aamchki	L	L	L	Aarsal	VL	VL	L
Ain Baalbek	VL	VL	L	Ain Bourday	L	L	L	Ain El-Benye	L	ML	M
Ain El-Jaouz Baalbek	L	L	L	Ain El-Siya Chadoura	L	ML	ML	Al Khodr Baalbek	VL	VL	L
Al Nabi Chit	VL	VL	L	Aynata Baalbek	L	L	L	Baalbek	L	L	L
Bachwat	VL	VL	VL	Barqa	VL	VL	VL	Bednayel Baalbak	L	L	L
Beit Chama	VL	VL	VL	Bijjaje	VL	VL	VL	Bouday	L	L	L
Brital	L	L	L	Btadi	VL	VL	VL	Chaat	VL	VL	VL
Chaibe	L	ML	ML	Chlifa	L	L	L	Chmestar	L	L	L
Dar El-Oussa	VL	VL	VL	Deir El-Ahmar	VL	VL	VL	Deir Mar Maroun Baal	VL	VL	VL
Douris	L	L	L	Fakiha	VL	VL	VL	Hadath Baalbek	L	L	L
Ham	L	L	ML	Haour Taala	L	L	L	Hizzine	VL	VL	VL
Hlebta	VL	VL	VL	Hosh Barada	VL	VL	VL	Hosh El Dahab	L	L	L
Hosh El Snid	VL	VL	L	Hosh El-Nabi	VL	VL	L	Hosh El-Rafiq	VL	VL	L
Hosh Tal Safiya	L	L	L	Hrebta	L	L	L	laat	L	L	L
Jebaa	VL	VL	VL	Jenta	VL	VL	L	Kfar Dabach	VL	VL	VL
Kfar Dane	VL	VL	VL	Khraibeh El-Hermel	VL	VL	VL	Khreibet Baalbek	L	L	L
Kneisset Baalbek	VL	VL	VL	Labueh	VL	VL	L	Maarboun	L	L	L
Majdaloun	VL	VL	VL	Maqneh	VL	VL	VL	Mazraat Beit Mcheik	ML	M	M
Misraya	VL	VL	L	Moqraq	VL	VL	VL	Nabha El-Damdoum	L	L	L
Nabi Chbay	L	L	L	Nabi Osman	VL	VL	L	Nahleh baalbek	VL	VL	L
Ouadi El-Oss	VL	VL	VL	Qaa Baayoun	VL	VL	L	Qaa Jouar Maqiye	VL	VL	L
Qaa Ouadi El-Khanzir	VL	VL	L	Qah Baalbek	VL	VL	L	Qarha Baalbek	VL	VL	VL

Qsarnaba	L	VL	VL	Ram Baalbek	VL	VL	VL	Ras Baalbek El Sahl	VL	VL	L
Ras Baalbek El-Charq	VL	VL	L	Riha	VL	VL	VL	Saaide	VL	VL	VL
Sbouba	VL	VL	L	Seriine El-Tahta	VL	VL	L	Slouqi	L	L	L
Taiba Baalbek	VL	VL	L	Talia	VL	VL	L	Taraiya	L	L	L
Temnin El Fawqa	L	L	L	Temnin El-Tahta	VL	VL	VL	Tfail	L	L	L
Yahfoufa	L	L	L	Yammouneh	L	L	L	Younine	VL	VL	L
Zboud	VL	VL	VL								

## Hermel

Municipality	23-Feb	24-Feb	25-Feb	Municipality	23-Feb	24-Feb	25-Feb	Municipality	23-Feb	24-Feb	25-Feb
Charbine El-Hermel	L	L	L	Hermel Jbab	L	L	L	Hermel	VL	VL	L
Maaysra El-Hermel	VL	VL	VL	Michaa Mrajhine	L	L	L	Ouadi Faara	VL	VL	VL
Ras Baalbek - Ouadi	VL	L	L	Ras Baalbek El Gharb	VL	L	L	Zighrine	VL	L	L

## Akkar

### Akkar

Municipality	23-Feb	24-Feb	25-Feb	Municipality	23-Feb	24-Feb	25-Feb	Municipality	23-Feb	24-Feb	25-Feb
Aain Tinta	L	ML	M	Aaiyat	ML	ML	M	Aakkar El-Aatiqa	L	L	L
Aamar Akkar	ML	M	M	Aamar El Baykat	ML	M	M	Aamayer	L	L	ML
Aamriyet Akkar	ML	M	M	Aandqet	L	L	L	Aarmeh	L	ML	M
Aarqa	ML	M	M	Aawaynat	L	L	M	Aayoun Akkar	L	L	ML
Abboudiye	ML	M	M	Ain El-Zeit	ML	M	M	Ain Yaaqoub	L	L	L
Akroum	L	L	L	Aridet Cheikh Zennad	ML	M	M	Baldeh w Mazraat Bal	L	ML	M
Barcha	ML	M	M	Bardeh	ML	M	M	Bebnine	ML	M	M
Beino	L	L	M	Beit Ayoub	ML	M	M	Beit El-Haouch	ML	M	M
Beit Mellat	L	ML	M	Beit Younes	L	ML	ML	Berbara Akkar	L	ML	M
Berqayel	ML	M	M	Bezrina	L	L	L	Bireh Akkar	ML	M	M
Borj	L	L	M	Bqerezla	ML	M	M	Bzal	L	L	L
Chane	L	L	L	Chaqdouf	L	L	ML	Charbila	L	ML	M
Cheikh Mohammad	ML	M	M	Cheikh Taba Es-Sahl	ML	M	M	Cheikh Taba	L	L	ML
Cheikh Zennad	ML	M	M	Cheikhlar	ML	ML	M	Chir Hmairine	ML	M	M
Daghle	L	ML	M	Dahr Laissine	ML	M	M	Darine	ML	M	M
Dawra	L	L	ML	Dawsa w Baghdadi	ML	M	M	Dayret Nahr El-Kabir	VL	VL	M
Deir Dalloum	ML	M	M	Deir Jennine	L	ML	M	Denbou	L	L	L
Dibbabiyyeh	ML	M	M	Douair Aadwiyeh	ML	ML	M	Fassikine	ML	M	M
Fnaydek	L	L	L	Fraydes Akkar	ML	M	M	Ghazayle	ML	M	M
Habchit	L	L	L	Hakour	ML	M	M	Halba	ML	M	M
Haouchab	ML	M	M	Hayssat	ML	M	M	Haytla	ML	M	M
Hayzouq	L	L	ML	Hedd	L	ML	M	Hmaira Akkar	ML	M	M
Hmaiss Akkar	ML	M	M	Hnaider	L	L	M	Hokr Ed-Dahri	ML	M	M
Hokr Etti	ML	M	M	Hokr Jouret Srar	ML	M	M	Houaich	L	L	ML
Hrar	L	ML	ML	Idbil	L	ML	M	Ilal	L	ML	ML
Janine	ML	M	M	Jdeidet El-Joumeh	L	ML	M	Jdeidet El-Kaiteh	ML	M	M
Jebrayel	ML	ML	M	Kafr	L	VL	L	Kafr	ML	M	M
Karm Asfour	ML	M	M	Kfar Melki Akkar	ML	M	M	Kfar Noun	L	ML	M
Kfarharra	ML	M	M	Khalsa	L	ML	M	Kharnoubet Akkar	ML	M	M



Khirbet Daoud Aakkar	ML	M	M	Khirbet El Remmane	ML	ML	M	Khirbet Shar	L	ML	M
Khoreybet El-Jindi	ML	M	M	Khreibet Aakkar	L	ML	ML	Kneisset Aakkar	ML	M	M
Kneisset Hnaider	ML	ML	M	Knisse	ML	M	M	Kroum El-Aarab	ML	ML	M
Kwachra	ML	M	M	Kweykhat	ML	ML	M	Machta Hammoud	L	L	M
Majdala	ML	M	M	Majdel Akkar	ML	M	M	Mar Touma	ML	M	M
Marlaya Melhem	ML	M	M	Mashha	L	ML	ML	Massoudiye	ML	M	M
Mazraat Beit Ghattas	ML	M	M	Mazraat En-Nahriye	L	L	ML	Mechmech	L	L	L
Memneh	L	L	L	Mhammara	ML	M	M	Mighraq Aakkar	ML	M	M
Minyara	L	ML	M	Moqayteh	M	M	M	Mounjez	L	ML	M
Msalla	ML	M	M	Mzeihmeh	ML	M	M	Nfaiseh	L	ML	M
Noura Et-Tahta	ML	M	M	Ouadi El-Haour	ML	M	M	Ouadi El-Jamous	ML	M	M
Ouyoun El-Ghizlane	ML	M	M	Qaabarine	ML	M	M	Qabaait	L	L	L
Qachlaq	ML	M	M	Qantara Aakkar	ML	M	M	Qarha Aakkar	L	L	ML
Qarqaf	ML	M	M	Qboula	L	L	M	Qleiaat Aakkar	M	M	M
Qloud El-Baqie	ML	M	M	Qobaiyat Aakkar	L	L	ML	Qobbat Chamrat	M	M	M
Qorayat	L	ML	ML	Qornet Aakkar	L	ML	ML	Qsair Aakkar	ML	M	M
Rahbe	L	ML	ML	Rihaniyet Aakkar	L	ML	M	Rmah	L	ML	M
Rmoul	M	M	M	Saadine	ML	M	M	Sadaqa	ML	M	M
Saidnaya	ML	M	M	Sammouniye	ML	M	M	Sayssoq	ML	M	M
Semmaqiye	ML	M	M	Semmaqli	ML	M	M	Sfinet El-Dreib	ML	M	M
Sfinet El-Qaitaa	ML	ML	ML	Sindyanet Zeidane	L	ML	M	Souaisset Aakkar	L	ML	M
Srar	ML	M	M	Tal Abbas El Gharby	ML	M	M	Tal Abbas El-Chargy	L	ML	M
Tal Biret	L	ML	M	Tal Hmayra	ML	M	M	Tal Maayan Tal Kiri	ML	M	M
Tal Sibel	ML	M	M	Tallet Chattaha	ML	ML	M	Tikrit	L	ML	ML
Tleil	ML	M	M	Tshea	L	L	L	Zawarib	L	ML	M
Zouq El Hosniyeh	ML	M	M	Zouq El-Haddara	ML	M	M	Zouq El-Hbalsa	ML	M	M
Zouq El-Mogachrine	ML	M	M								

## Sud

### Sour

Municipality	23-Feb	24-Feb	25-Feb	Municipality	23-Feb	24-Feb	25-Feb	Municipality	23-Feb	24-Feb	25-Feb
Aaiyeh	VL	VL	ML	Aalma El-Chaab	VL	VL	M	Aaytit	VL	VL	ML
Abbassiyeh Sour	L	L	M	Abou Chech	VL	VL	M	Ain Abou Abdallah	ML	M	M
Ain Baal	VL	VL	M	Arzoun	VL	VL	L	Aziyeh	VL	VL	M
Baflaya	VL	VL	L	Barich	VL	VL	M	Batouliyah	VL	VL	M
Bayad	VL	VL	ML	Bazouriyeh	VL	VL	M	Bediass	ML	M	M
Bestiyat	L	L	M	Borj El Chemali	VL	VL	M	Borj En-Naqoura	VL	VL	M
Borj Rahhal	ML	M	M	Boustane	VL	VL	L	Btaychiyeh	VL	VL	M
Chaaitiye	VL	VL	M	Chameh	VL	VL	M	Chehabiye	VL	VL	L
Chehour	L	L	L	Chihine	VL	VL	L	Debaal Sour	VL	VL	M
Deir Amess	VL	VL	ML	Deir Kifa	VL	VL	L	Deir Qanoun El-Ain	VL	VL	M
Deir Qanoun El-Naher	L	L	M	Derdghaiya	L	L	L	Dhayra	VL	VL	M
Halloussiyeh	L	ML	M	Hamoul	VL	VL	M	Hanaouey	VL	VL	M
Henniye	VL	VL	M	Hmairi Sour	L	L	M	Iskandarouna Sour	VL	VL	M
Jbal El Botom	VL	VL	L	Jebbin	VL	VL	M	Jennata	VL	VL	M
Jijim	VL	VL	M	Jouaiya	VL	VL	M	Kneisset Sour	VL	VL	M

Maarake	VL	VL	M	Maaroub	VL	VL	M	Majadel	VL	VL	L
Majdalzoun	VL	VL	M	Mansouri Sour	VL	VL	M	Marnba	L	L	ML
Marouahine	VL	VL	L	Mazraat El-Zalloutiy	VL	VL	L	Mazraat Mechref	VL	VL	ML
Mazraat Tayr Semhat	L	L	L	Mheilib	L	L	M	Neffakhiyeh	VL	VL	L
Niha Sour	VL	VL	L	Ouadi Jilo	VL	VL	M	Qana	VL	VL	ML
Qolaileh Sour	VL	VL	M	Rechknany	VL	VL	ML	Rmadiyah	VL	VL	ML
Selha Sour	VL	VL	L	Siddiqine	VL	VL	ML	Sour	VL	VL	M
Srifa	L	L	L	Tayr Debbe	VL	VL	M	Tayr Felsay	ML	ML	M
Tayr Harfa	VL	VL	M	Touayri	VL	VL	L	Toura	L	L	M
Yanouh Sour	VL	VL	M	Yarine	VL	VL	ML	Zebqine	VL	VL	L

## Saida

Municipality	23-Feb	24-Feb	25-Feb	Municipality	23-Feb	24-Feb	25-Feb	Municipality	23-Feb	24-Feb	25-Feb
Aanqoun	M	M	M	Aaqtanit	M	M	M	Aarab Ej-Jall	M	M	M
Aarab Tabbaya	M	M	M	Abra Saida	M	M	M	Adloun	M	M	M
Adousiyeh	M	M	M	Ain-El-Deleb	M	M	M	Arzai	M	M	M
Babliyah	M	M	M	Barty	M	M	M	Bissariyeh	M	M	M
Bnaafoul	M	M	M	Bqosta	M	M	M	Bramiy	M	M	M
Daoudiyeh	M	M	M	Dareb El-Sim	M	M	M	Erkay	M	M	M
Ghassanieh	M	M	M	Ghazieh	M	M	M	Hajjeh	M	M	M
Haret Saida	M	M	M	Hartiyeh	M	M	M	Hlaliye Saida	M	M	M
Insariyat	M	M	M	Jazira Saida	M	M	M	Kafar Bit	M	M	M
Kaoutariyet El-Siyad	M	M	M	Kfar Chellal	M	M	M	Kfar Hatta Saida	M	M	M
Kfar Milke Saida	M	M	M	Khartoum	M	M	M	Khaziz	M	M	M
Khirbet Ed-Douair Sa	M	M	M	Khirbet El-Bassal	M	M	M	Khrayeb Saida	M	M	M
Loubieh	M	M	M	Maghdouche	M	M	M	Majdelyoun	M	M	M
Matariyet El-Choumar	M	M	M	Matayriyeh	M	M	M	Mazraat 'Mseileh	M	M	M
Mazraat 'Snaiber	M	M	M	Mazraat Aarab Soukka	M	M	M	Mazraat Deir Taqla	M	M	M
Mazraat El Yahoudiye	M	M	M	Mazraat El-Housseini	M	M	M	Mazraat El-Mhaydaleh	M	M	M
Mazraat El-Ouasta	M	M	M	Mazraat Jamjim	M	M	M	Mazraat Kaoutariyet	M	M	M
Mazraat Kfar Badda	M	M	M	Mazraat Oussamiyat	M	M	M	Mazraat Sari	M	M	M
Mazraat Sinai	M	M	M	Meemariyeh	M	M	M	Merouaniyeh	M	M	M
Miyeh ou Miyeh	M	M	M	Najjariyeh	M	M	M	Qaaqaiyat El-Snaouba	M	M	M
Qnarit	M	M	M	Qraiye Saida	M	M	M	Saida Ed-Dekermane	M	M	M
Saida El-Oustani	M	M	M	Saida El-Qadimeh	M	M	M	Saida Kefraya	M	M	M
Saksakiyeh	M	M	M	Salhie Saida	M	M	M	Sarafand	M	M	M
Sfenta	M	M	M	Tafahta	M	M	M	Tanbourit	M	M	M
Tebna	M	M	M	Zaghdraiya	M	M	M	Zeita	M	M	M
Zrariyeh	M	M	M								

## Jezzine

Municipality	23-Feb	24-Feb	25-Feb	Municipality	23-Feb	24-Feb	25-Feb	Municipality	23-Feb	24-Feb	25-Feb
Ain El-Mir (El Estab	M	M	M	Anane	M	M	M	Aramta	ML	M	M
Ariya	ML	ML	ML	Aychiyeh	M	M	M	Azour	M	M	M
Baba	M	M	M	Bayssour Jezzine	M	M	M	Benoueteh Jezzine	ML	M	M
Bhannine	ML	M	M	Bisri	M	M	M	Bkassine	L	L	L
Bouslaya	M	M	M	Btedine El-Leqech	ML	M	M	Chbail	L	L	L
Choualiq Jezzine	M	M	M	Dahr Ed-Deir	M	M	M	Deir El Qattine	M	M	M



Demachqiyeh	M	M	M	Ghabbatiyeh	ML	M	M	Harf Jezzine	ML	ML	ML
Hassaniyeh	M	M	M	Haytouleh	M	M	M	Haytura	M	M	M
Hidab	M	M	M	Homsiyeh	M	M	M	Jabal Toura	L	ML	ML
Jarmaq	M	M	M	Jensnaya	M	M	M	Jernaya	M	M	M
Jezzine	ML	M	M	Karkha	M	M	M	Kfar Falous	M	M	M
Kfar Houna	ML	ML	ML	Kfar Jarrah	M	M	M	Lebaa	M	M	M
Louayzet Jezzine	M	M	M	Machmouche	L	L	L	Mahmoudiyeh Jezzine	M	M	M
Maknounye Jezzine	M	M	M	Maraat Ouzaïyeh	M	M	M	Mazraat Daraya	L	ML	ML
Mazraat El-Aarqoub	M	M	M	Mazraat El-Mathane	M	M	M	Mazraat El-Rahbane	L	ML	ML
Mazraat Khallet Khaz	ML	M	M	Mazraat Louzid (Loua	L	L	L	Mazraat Qrouh	ML	M	M
Mazraat Tamra	ML	M	M	Mazraat Zighrine Jez	M	M	M	Mazraat	L	ML	ML
Mharbiyeh	M	M	M	Midane Jezzine	L	ML	ML	Mjeydel Jezzine	M	M	M
Mlikh	ML	M	M	Mrah El-Hbasse	M	M	M	Ouadi Baanquodaine	M	M	M
Ouadi El-Laymoun	M	M	M	Ouardiyeh	M	M	M	Qabaa Jezzine	M	M	M
Qatrani	L	ML	ML	Qaytouleh	M	M	M	Qtaleh Jezzine	M	M	M
Rihane Jezzine	ML	M	M	Rimat	M	M	M	Roum	M	M	M
Roummanet	ML	M	M	Sabbah	L	L	L	Saydoun	M	M	M
Sfaray	M	M	M	Snaya	M	M	M	Sojoud	M	M	M
Srayri	ML	M	M	Taaïd	ML	ML	ML	Wadi Jezzine	L	ML	ML
Zhalta	M	M	M								

## Bekaa

### West Bekaa

Municipality	23-Feb	24-Feb	25-Feb	Municipality	23-Feb	24-Feb	25-Feb	Municipality	23-Feb	24-Feb	25-Feb
Aammiq BG	L	L	L	Ain El Tineh BG	ML	M	M	Ain Zebdeh	ML	M	M
Ana	L	L	L	Aytanit	M	M	M	Baaloul BG	M	M	M
Bab Mareh	M	M	M	Chouberqiye Aammiq	L	VL	VL	Dakoue	VL	VL	L
Deir Ain El-Jaouze	M	M	M	Deir Tahniche	L	ML	ML	Ghaza	L	VL	VL
Harime El-Soughra	VL	VL	L	Hoch Harimeh	VL	VL	L	Jazira BG	VL	VL	VL
Jib Jennine	L	L	L	Kamed-El-Laouz	L	L	L	Kefraya BG	ML	ML	ML
Khiara El Atika	VL	VL	VL	Khiara	L	L	L	Khirbet Qanafar	L	ML	ML
Lala	ML	ML	ML	Lebbaya BG	L	L	L	Loussa	M	M	M
Machghara	ML	M	M	Manara (Hammara) BG	L	L	L	Mansoura BG	L	L	L
Marej BG	VL	VL	VL	Maydoun	M	M	M	Ouaqf BG	VL	VL	VL
Qaraaoun	ML	M	M	Qelya	ML	ML	ML	Raouda (Istabel)	VL	VL	L
Saghbine	ML	M	M	Sohmor	L	L	L	Soltan Yacoub el Ara	VL	VL	L
Souairy	VL	VL	L	Sultan Yaacoub	L	L	L	Tal Znoub	ML	M	M
Yehmor BG	L	L	L	Zilaya	L	L	L				

### Zahle

Municipality	23-Feb	24-Feb	25-Feb	Municipality	23-Feb	24-Feb	25-Feb	Municipality	23-Feb	24-Feb	25-Feb
Aanjar (Haouch Mouss	VL	VL	L	Ablah	VL	VL	VL	Ain Kfarzabad	VL	VL	VL
Ali-El-Nahri	VL	VL	VL	Bar Elias	VL	VL	VL	Bouarej	VL	VL	VL
Cheberqiyet Tabet	VL	VL	VL	Chtaura	VL	VL	VL	Deir El Ghazal	VL	VL	L
Delhamiyet Zahle	VL	VL	VL	Ferzol	VL	VL	VL	Haouch El-Ghanam	VL	VL	VL
Haouch Es-Siyadeh	VL	VL	VL	Haouch Hala	VL	VL	VL	Haouch Mandara	VL	VL	VL

Haouch Qayssar	VL	VL	VL	Hezerta	VL	VL	VL	Hosh Moussa	VL	VL	VL
Jdita	VL	VL	VL	Kfarzabad	VL	VL	VL	Ksara	VL	VL	VL
Majdel Aanjar	VL	VL	L	Makssi	VL	VL	VL	Massa	VL	VL	L
Mazraat Er-Remtaniye	VL	VL	VL	Mrayjat Zahle	VL	VL	VL	Mzaraa Zahle	VL	VL	VL
Nabi Ayla	VL	VL	VL	Nasriyet Rizk	VL	VL	L	Nasriyet Zahle	VL	VL	VL
Niha Zahle	VL	VL	VL	Ouadi Ed-Deloum	L	VL	VL	Ouadi El-Arayech	VL	VL	VL
Qaa El Rim	L	VL	VL	Qab Elias	VL	VL	VL	Qousaya	VL	VL	L
Rhit	VL	VL	VL	Riyak	VL	VL	VL	Saadnayel	VL	VL	VL
Taal El-Akhdar	VL	VL	VL	Taalbeya	VL	VL	VL	Taanayel	VL	VL	VL
Talamara	VL	VL	VL	Tcheflik Edde Haouch	VL	L	L	Tcheflik Qiqano	VL	VL	VL
Terbol Zahle	VL	VL	VL	Touaite Zahle	L	VL	VL	Zahle Aradi	VL	VL	VL
Zahle El-Berbara	VL	VL	VL	Zahle El-Maallaqa	VL	VL	VL	Zahle El-Midane	VL	VL	VL
Zahle Er-Rassiye	VL	VL	VL	Zahle Haouch El-Ouma	VL	VL	VL	Zahle Haouch El-Ouma	VL	VL	VL
Zahle Haouch Ez-Zara	VL	VL	VL	Zahle Maalaqa Aradi	VL	VL	VL	Zahle Mar Antonios	VL	VL	VL
Zahle Mar Elias	VL	VL	VL	Zahle Mar Gerios	VL	VL	VL	Zahle Saydet En-Naja	VL	VL	VL
Zebdoul	VL	VL	VL								

## Rachaiya

Municipality	23-Feb	24-Feb	25-Feb	Municipality	23-Feb	24-Feb	25-Feb	Municipality	23-Feb	24-Feb	25-Feb
Ain Arab Rachaiya	L	L	L	Ain Ata	ML	ML	ML	Ain Harche	L	ML	ML
Aqabe Rachaya	L	L	L	Ayha	L	L	L	Ayta El Fokhar	L	L	L
Bakifa Rachaya	L	L	L	Bakka	VL	VL	L	Beit Lahya	L	L	L
Bireh Rachaiya	L	L	L	Daher El Ahmar	L	L	L	Deir El-Achayer	VL	VL	L
Heloua Rachaiya	VL	VL	L	Hoch El Qannabeh Rac	L	L	L	Kaoukaba Bou Arab	ML	ML	M
Kfar Danis	L	L	L	Kfar Mechki	L	L	L	Kfar Qouq	L	L	L
Kherbet Rouha	L	L	L	Majdel Balhiss	ML	ML	ML	Mdoukha	L	L	L
Mhaydseh Rachaiya	M	M	M	Nabi Safa	L	L	L	Rachaiya	L	L	L
Rafid Rachaiya	L	L	ML	Selsata (Mazraat Dei	VL	VL	L	Tannoura	L	L	L
Yanta	VL	L	L								

## Beyrouth

### Beyrouth

Municipality	23-Feb	24-Feb	25-Feb	Municipality	23-Feb	24-Feb	25-Feb	Municipality	23-Feb	24-Feb	25-Feb
Achrafieh	M	M	M	Ain el-Mreisse	ML	ML	M	Bachoura	M	M	M
Beirut Central Distr	VL	VL	VL	Marfai	L	L	L	Mazraa	M	M	M
Medaouar	M	M	M	Minet el-Hosn	L	L	ML	Mwssaitbeh	M	M	M
Ras Beirut	ML	ML	M	Rmeil	M	M	M	Saifi	L	L	M
Zqaq el-Blat	L	L	M								