

Lebanon Fire Risk Bulletin



CIVIL DEDEFENCE

Refer to cadast table condition.

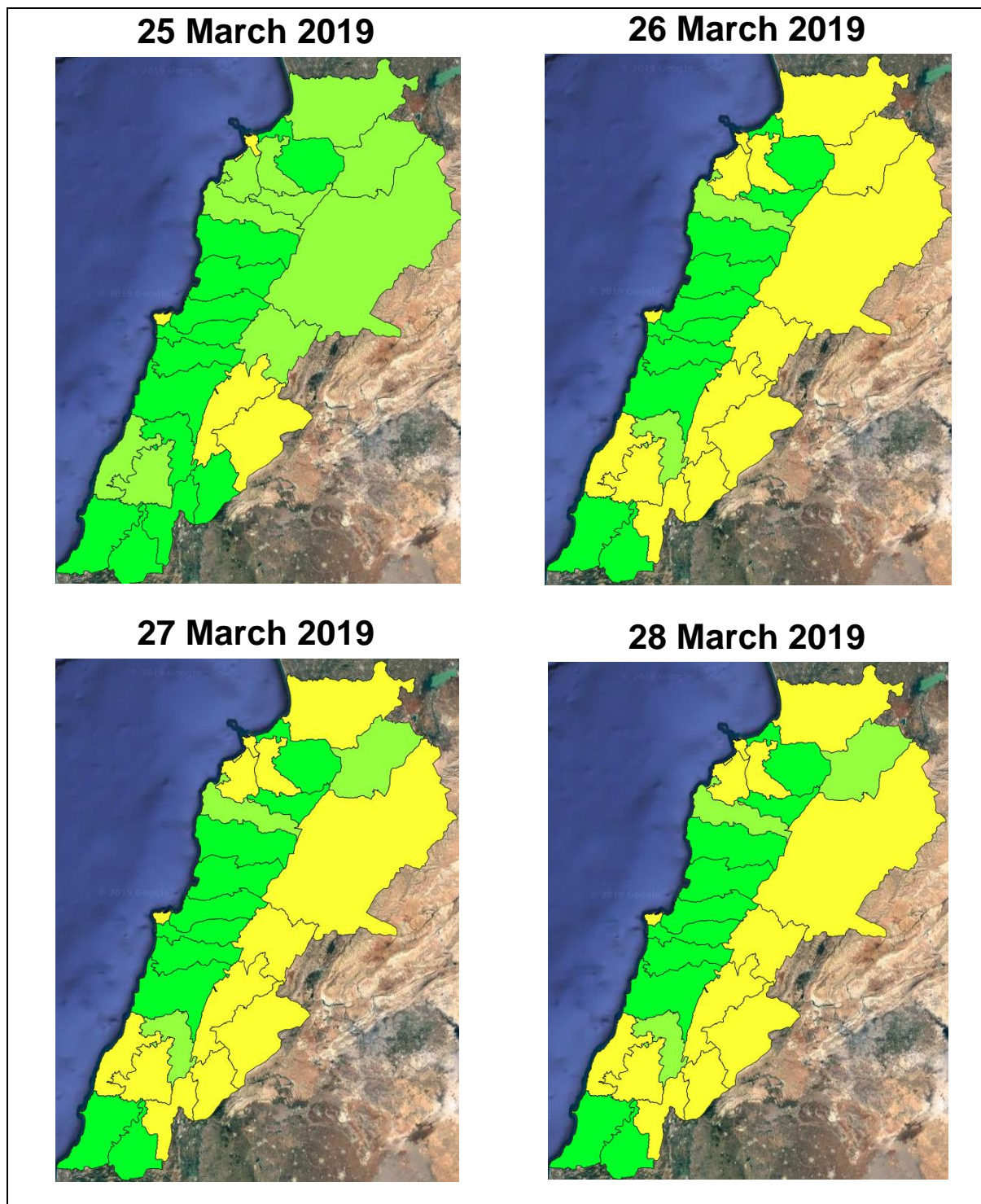
Please note that the indicated temperature is at 2 meters height from the ground.

General description of potential fire risk situation

Symbol	Level of risk	Meaning and actions
VL	Very low	Very low fire risk. Controlled burning operations can be hardly executed due to high fuel moisture content. Normally wildfires self-extinguish.
L	Low	Low fire risk. Controlled burning operations can be executed with a reasonable degree of safety.
ML	Medium low	Medium-low fire risk. Controlled burning operations can be executed in safety conditions. All the fires need to be extinguished.
M	Medium	Medium fire risk. Controlled burning operations would be avoided. All the fires need to be very well extinguished.
M	Medium high	Controlled burning is not recommended. Open flame will start fires. Cured grasslands and forest litter will burn readily. Spread is moderate in forests and fast in exposed areas. Patrolling and monitoring is suggested. Fight fires with direct attack and all available resources.
H	High	Ignition can occur easily with fast spread in grass, shrubs and forests. Fires will be very hot with crowning and short to medium spotting. Direct attack on the head may not be possible requiring indirect methods on flanks. Patrolling and monitoring the territory is highly suggested.
E	Extreme	Ignition can occur also from sparks. Fires will be extremely hot with fast rate of spread. Control may not be possible during day due to long range spotting and crowning. Suppression forces should limit efforts to limiting lateral spread. Damage potential total. Patrolling and monitoring the territory is highly suggested.

Beirut, 26 March 2019

FIRE RISK INDEX

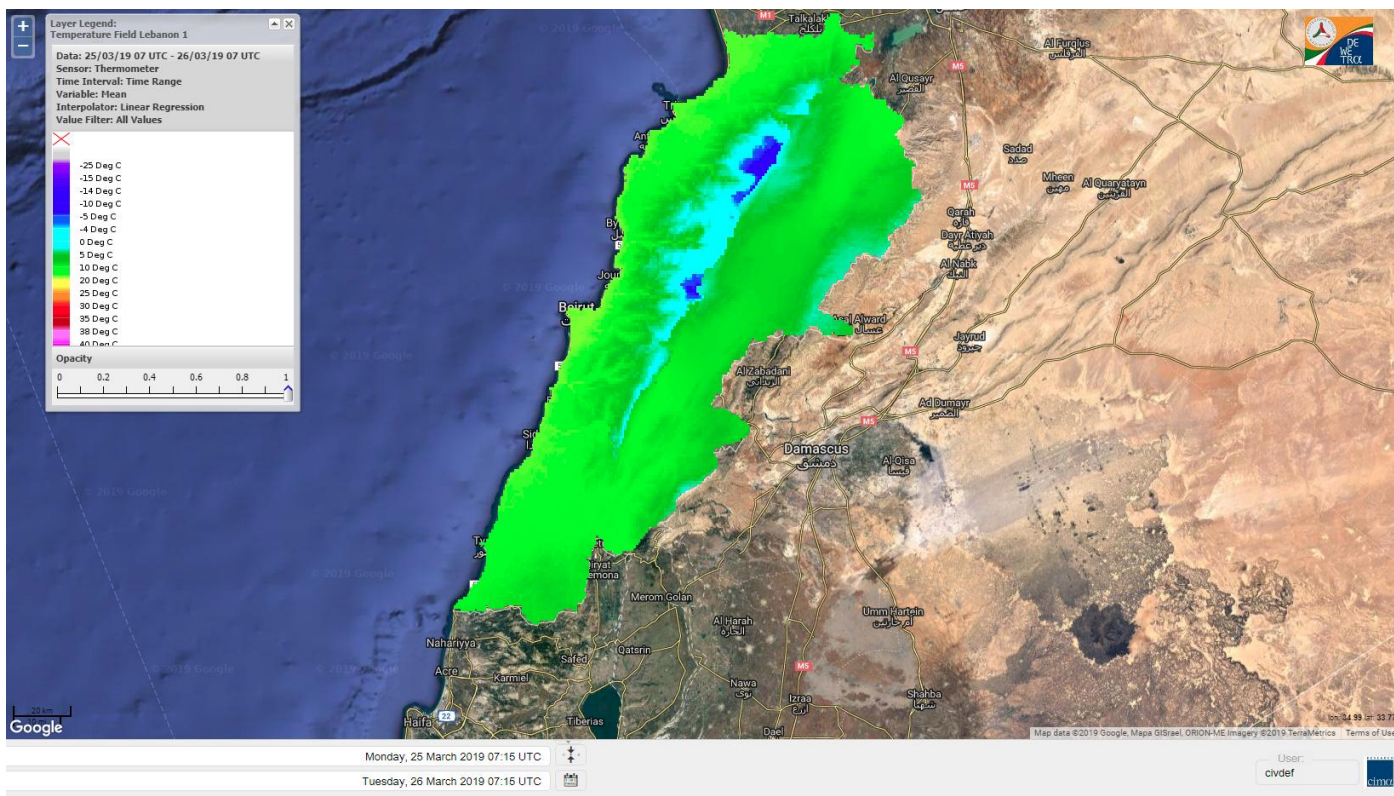


Layer Legend:
Lebanon Wildfire Risk Index 1

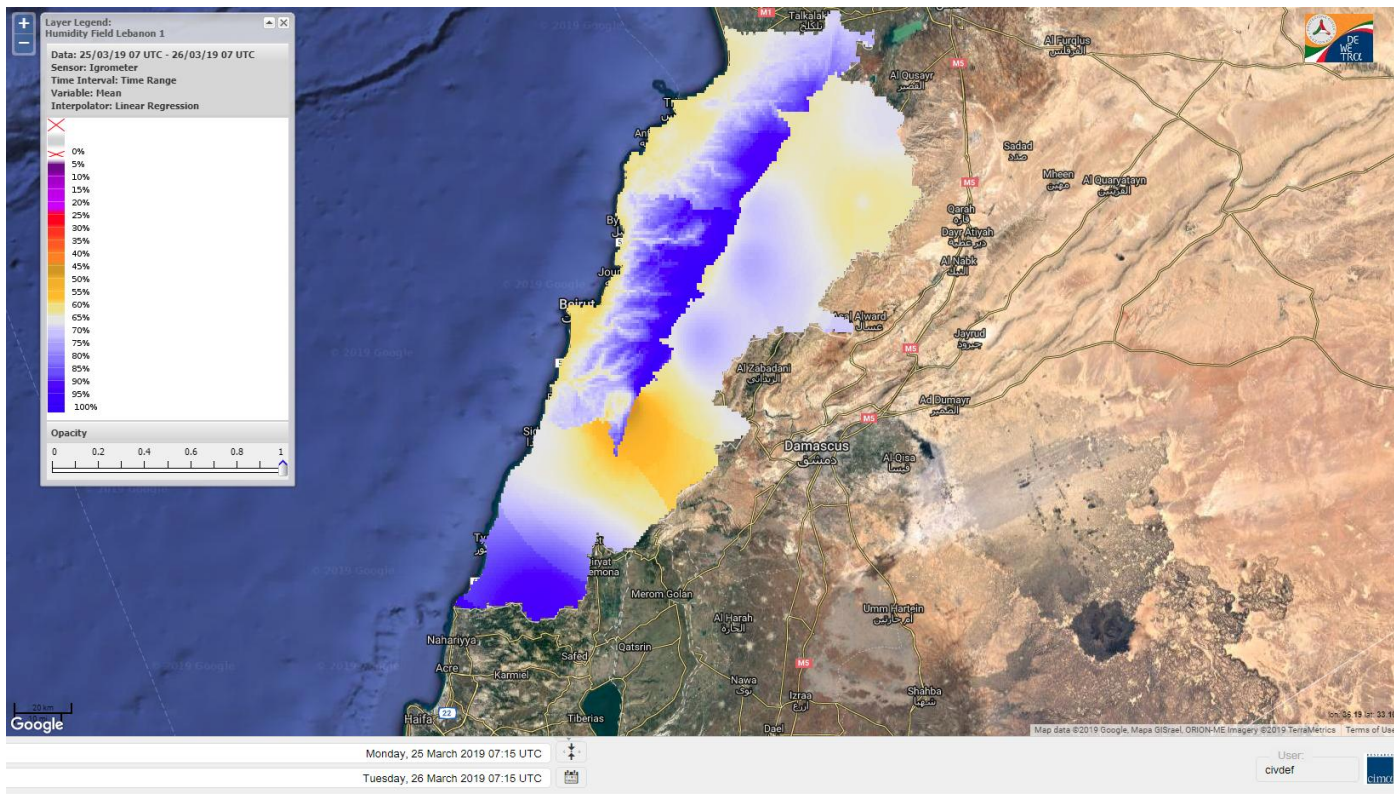
Data: Run: 26/03/2019 00:00. Forecast for 26
Model: RISICO for the Republic of Lebanon
Variable: Fire Weather Index
Spatial Resolution: Caza

- VERY LOW
- LOW
- MEDIUM-LOW
- MEDIUM
- MEDIUM-HIGH
- HIGH
- EXTREME

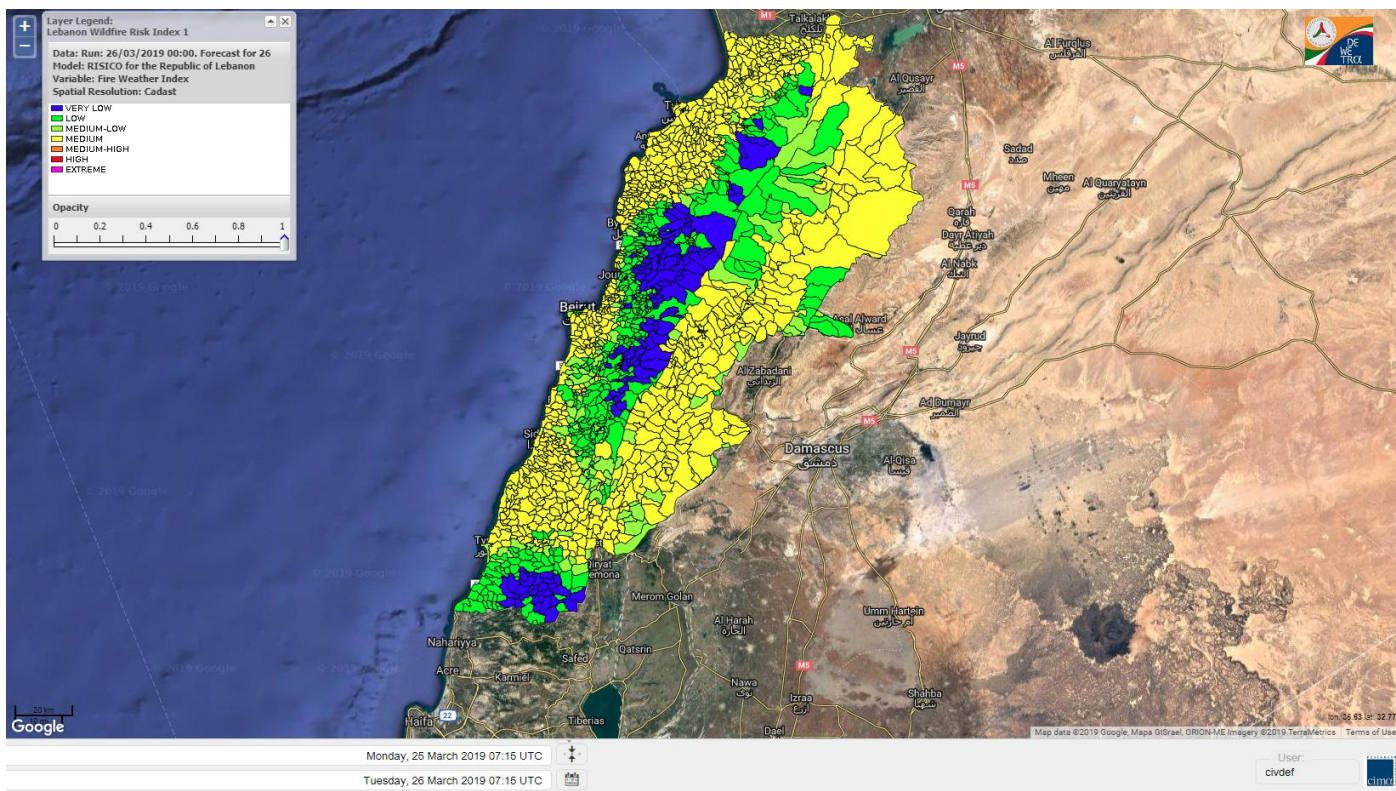
Lebanon temperature for Lebanon 26 March 2019



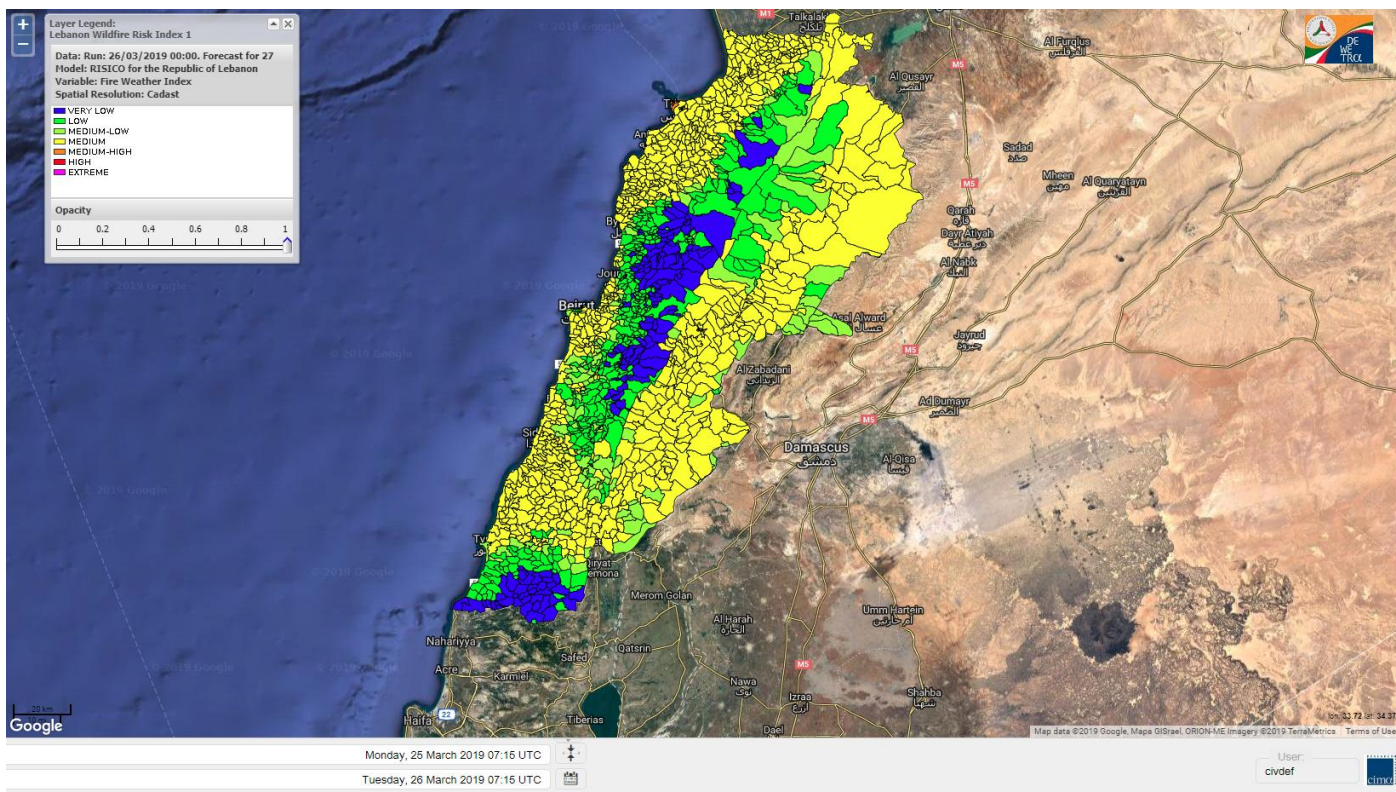
Lebanon humidity for Lebanon 26 March 2019



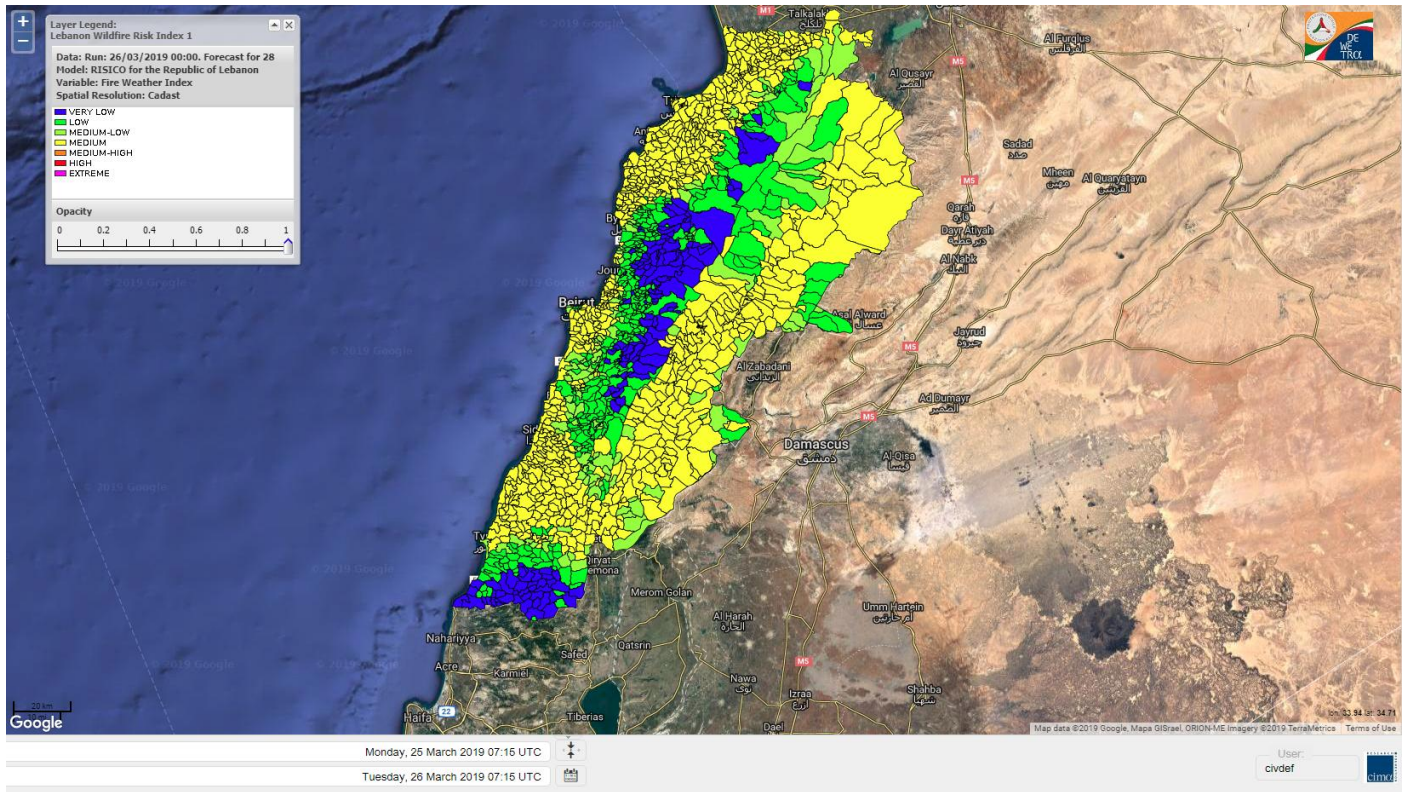
Lebanon for 26 March 2019



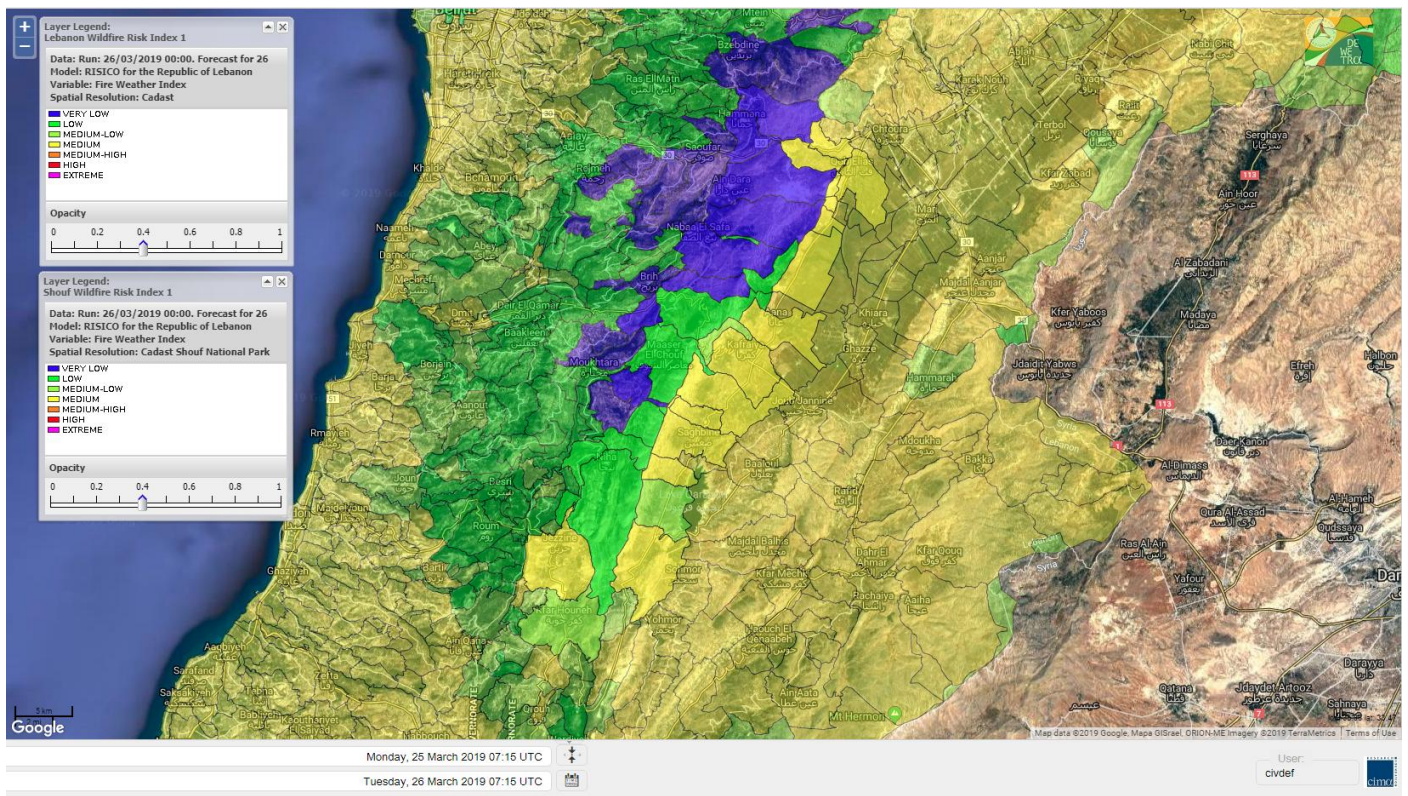
Lebanon for 27 March 2019



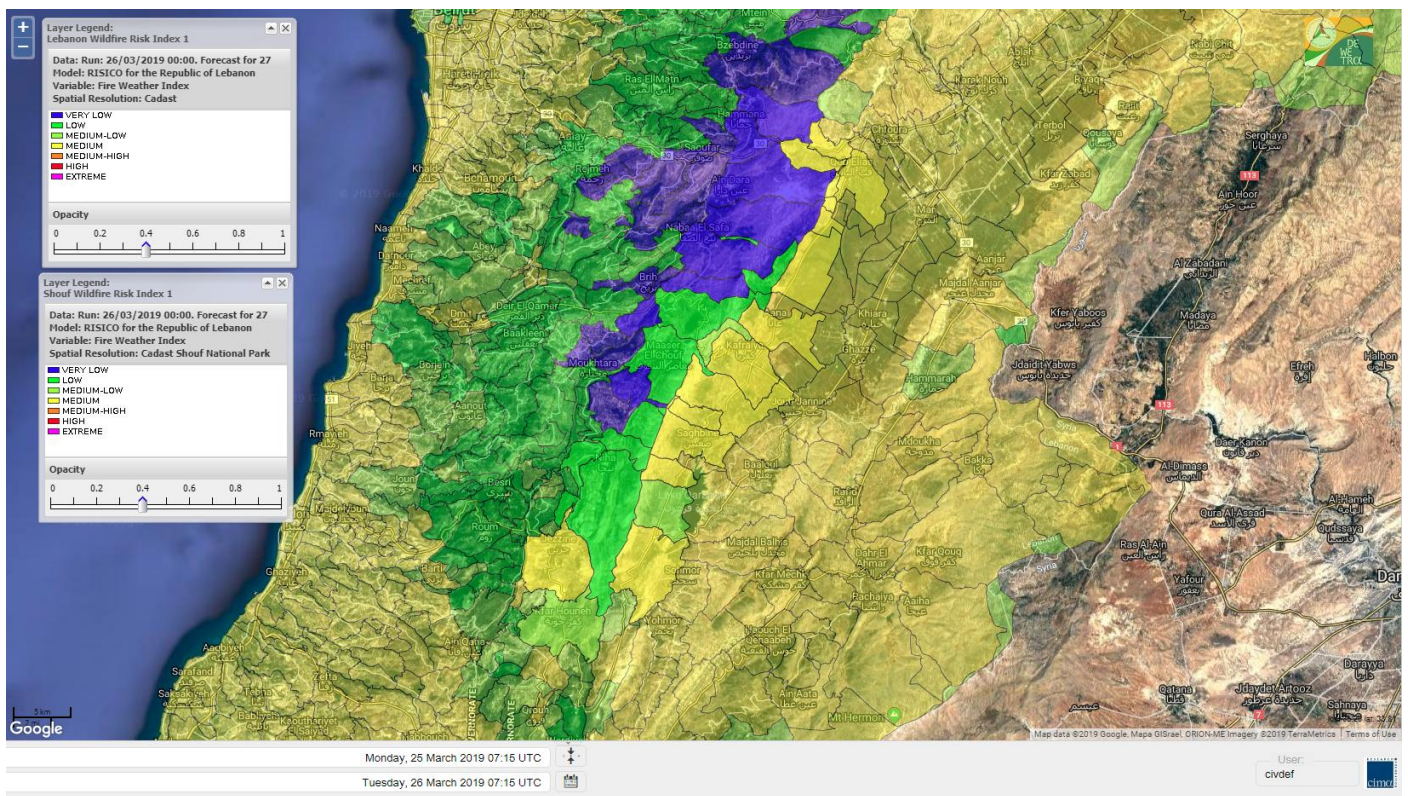
Lebanon for 28 March 2019



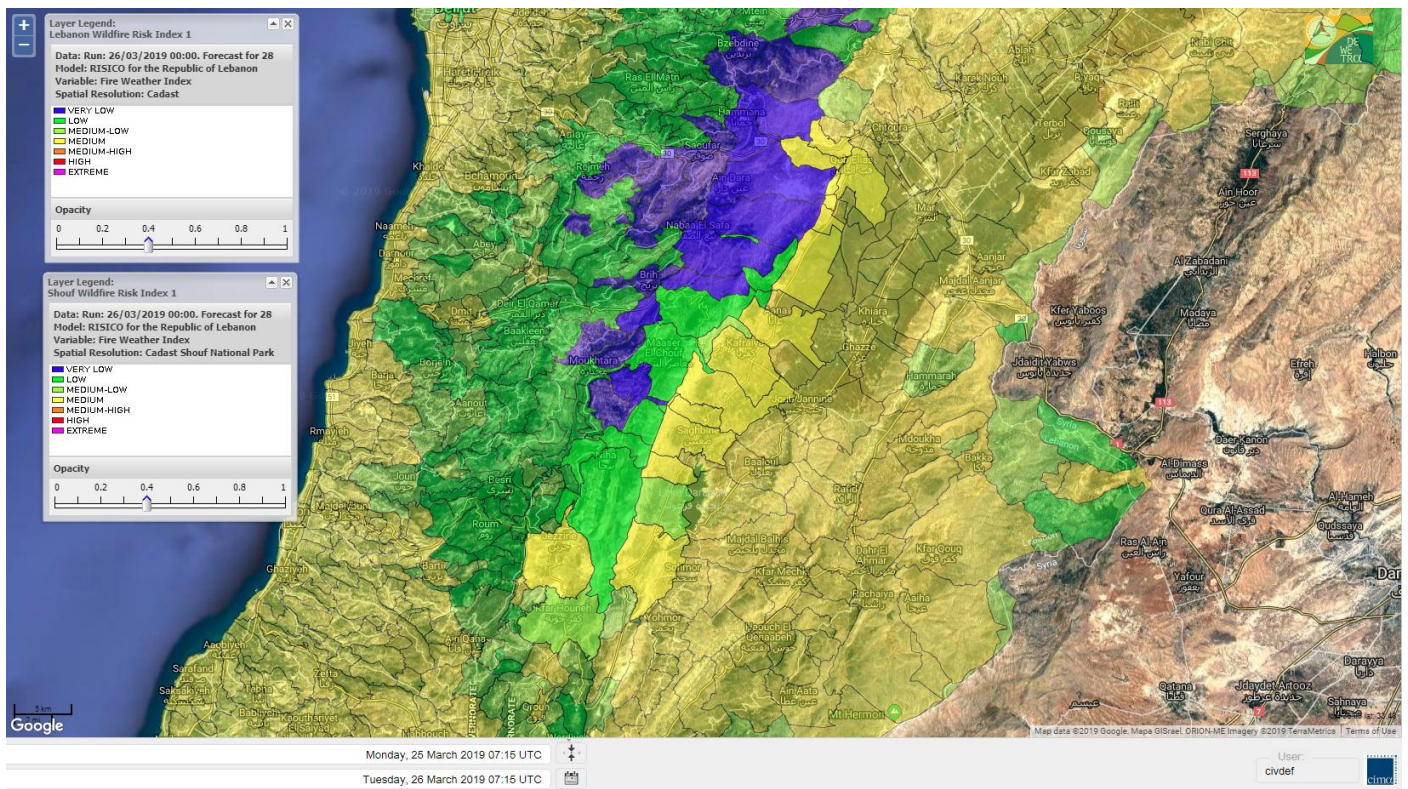
Shouf Biosphere Reserve Forecast for 26 March 2019



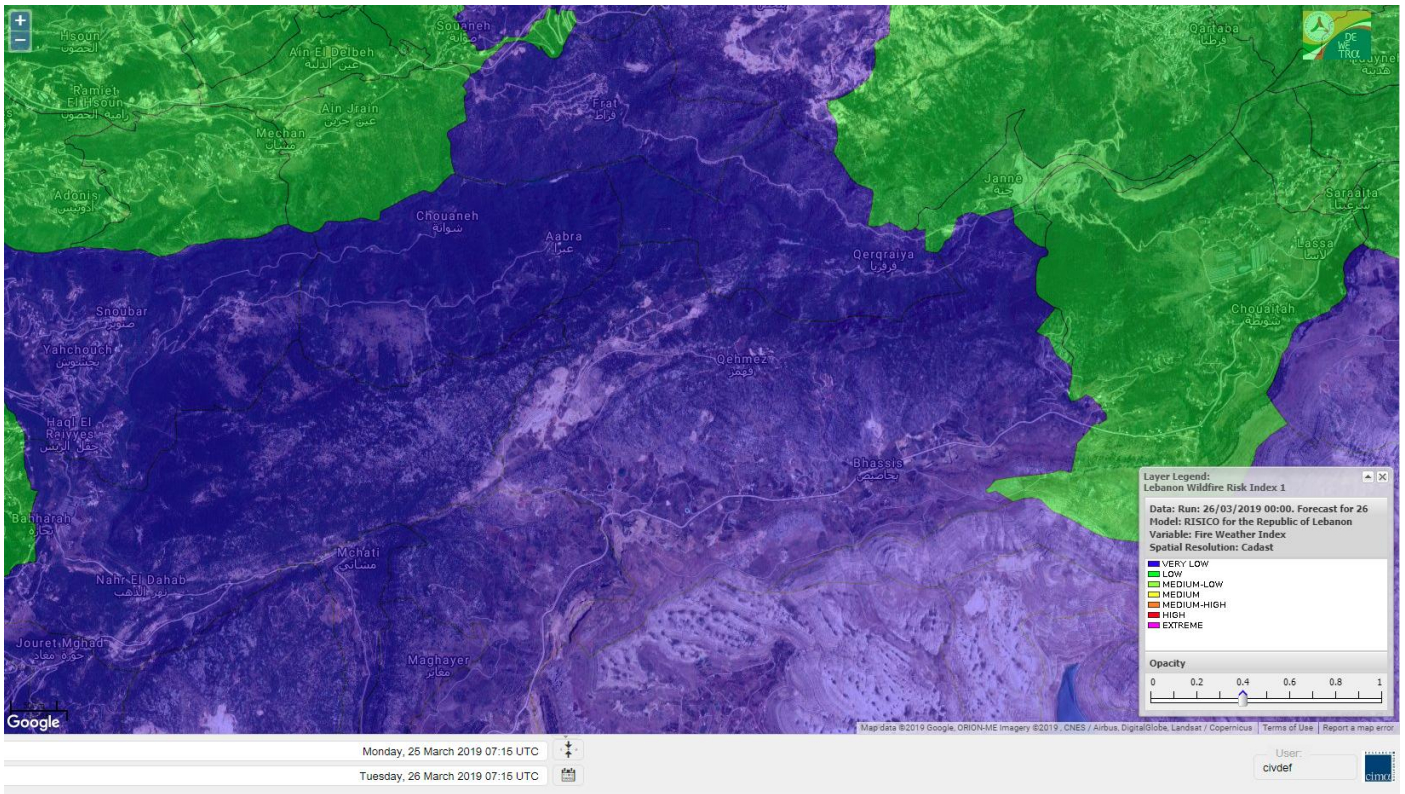
Shouf Biosphere Reserve Forecast for 27 March 2019



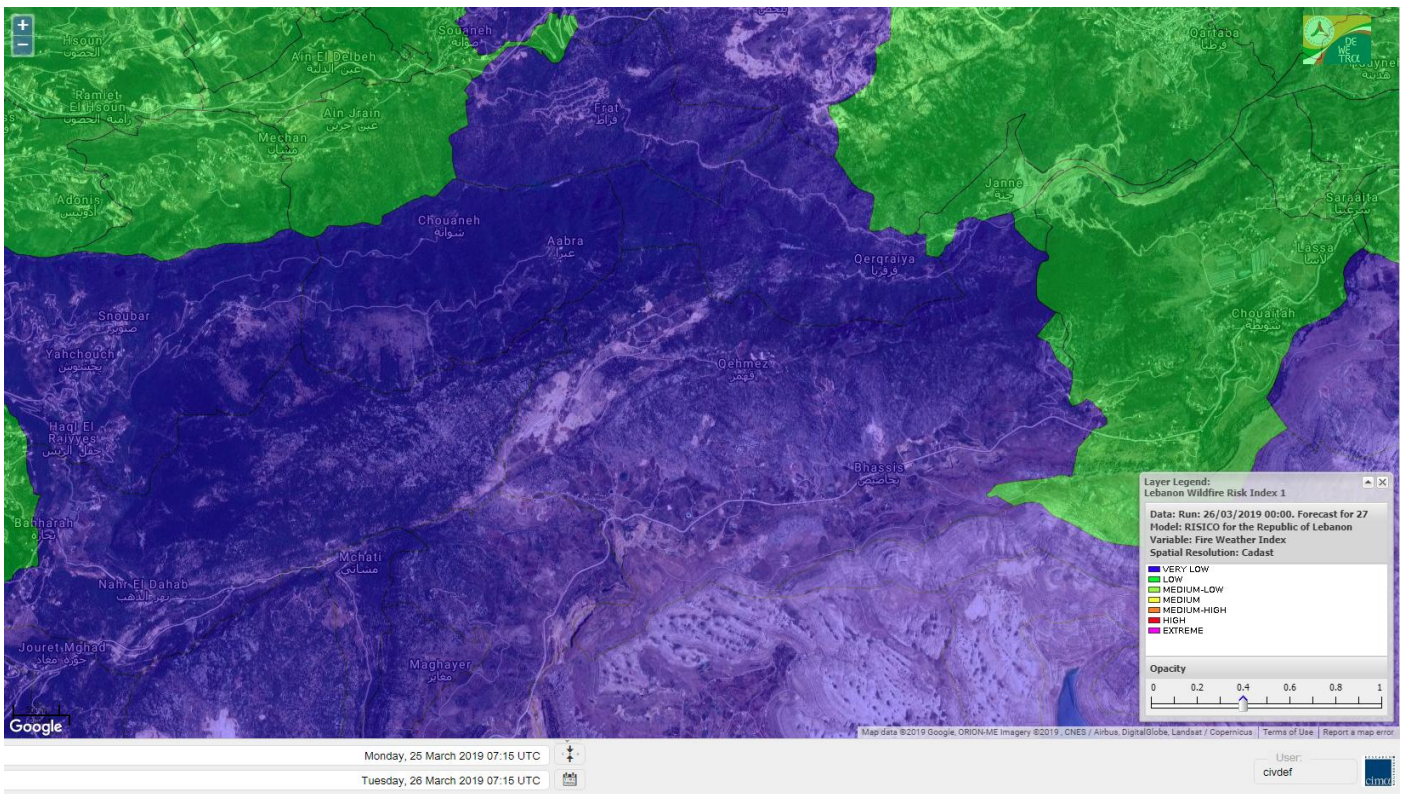
Shouf Biosphere Reserve Forecast for 28 March 2019



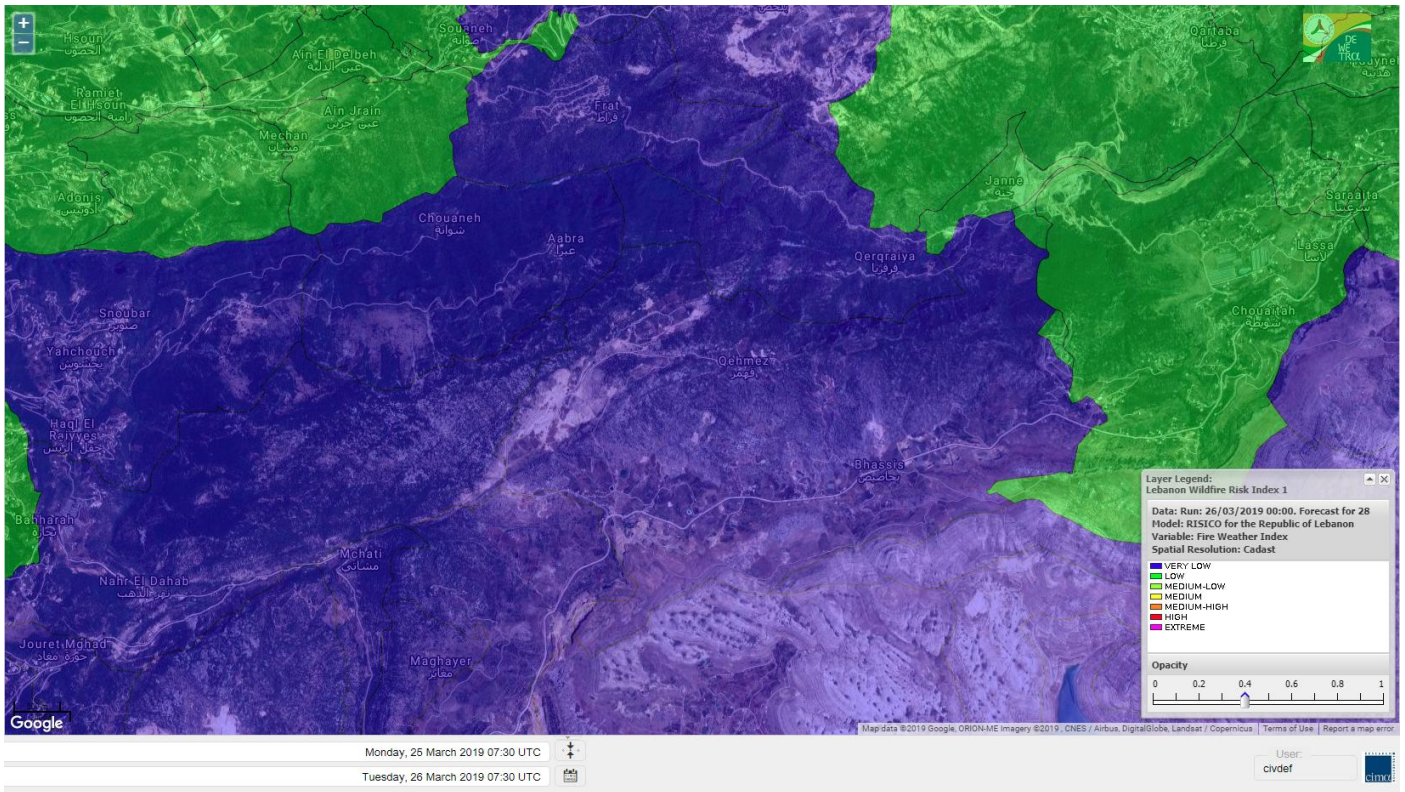
Jabal Moussa Reserve Forecast for 26 March 2019



Jabal Moussa Reserve Forecast for 27 March 2019



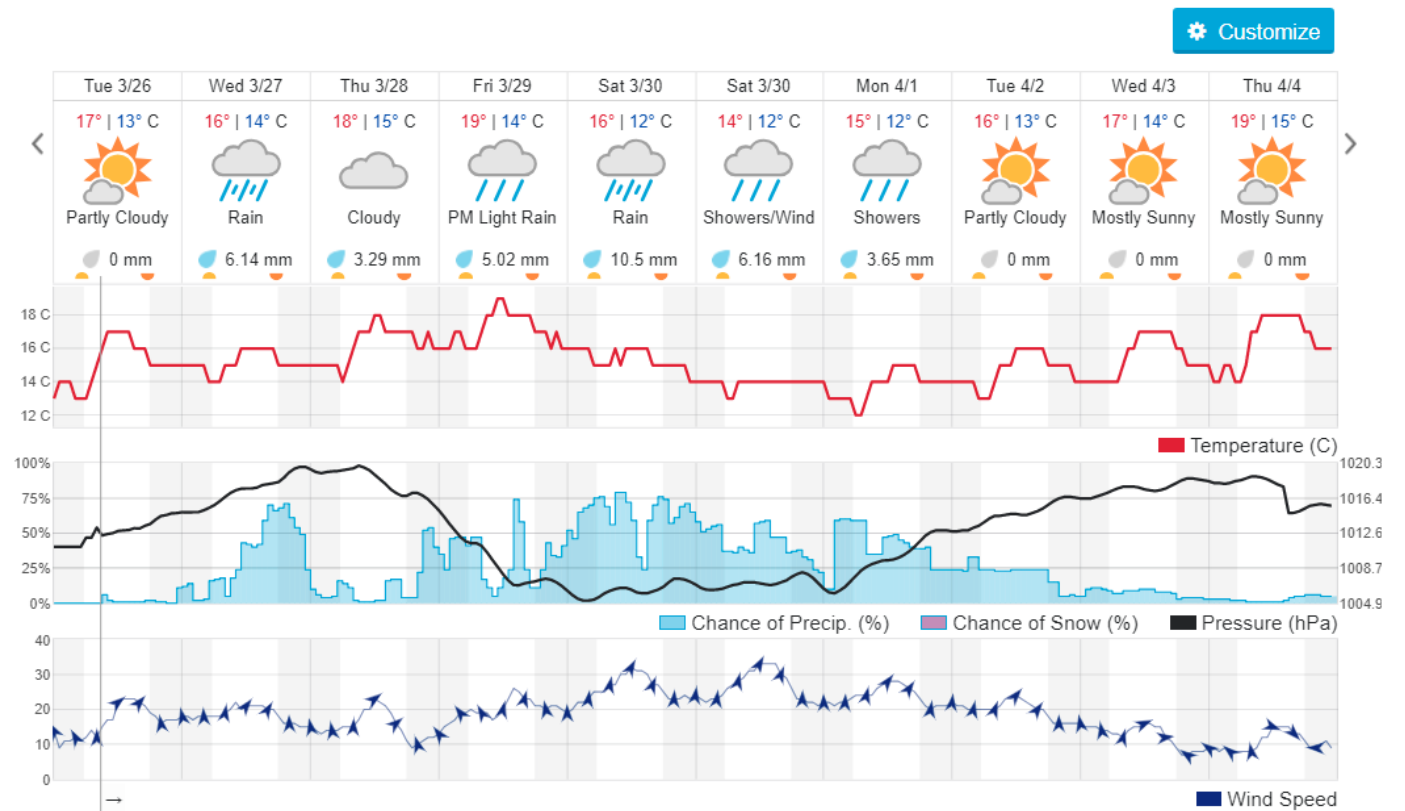
Jabal Moussa Reserve Forecast for 28 March 2019



Beirut, LB

16° ACHRAFIEH, RIZK STATION | CHANGE

TODAY HOURLY **10-DAY** CALENDAR HISTORY WUNDERMAP



Nord

Koura

Municipality	26-Mar	27-Mar	28-Mar	Municipality	26-Mar	27-Mar	28-Mar	Municipality	26-Mar	27-Mar	28-Mar
Aaba	M	M	M	Afsaddiq	M	M	M	Ain Ekrine	M	M	M
Amioun	M	M	M	Anfeh	M	M	M	Badbhoun	M	M	M
Barghoun	M	M	M	Barsa	M	M	M	Batroumine	M	M	M
Bdebba	M	M	M	Bechmizzine	M	M	M	Bednayel El-Koura	M	M	M
Bhabbouch El-Koura	M	M	M	Bkeftine	M	M	M	Bnehran	M	M	M
Bqaiaa El-Koura	M	M	M	Bsarma	M	M	M	Btaaboura	M	M	M
Bterram	M	M	M	Btouratij	M	M	M	Bziza	M	M	M
Dar Beehtar	M	M	M	Dar Chmezzine	M	M	M	Deddeh	M	M	M
Deir El-Balamand	M	M	M	Fih	M	M	M	Hraiche	M	M	M
Ijdaabrine	M	M	M	Kaftoun	M	M	M	Kefraya El-Koura	M	M	M
Kfarakka	M	M	M	Kfarhata	M	M	M	Kfarhazir	M	M	M
Kfarkahel	M	M	M	Kfarsaroun	M	M	M	Kosba	M	M	M
Mejdel el-Koura	M	M	M	Nakhle	M	M	M	Qalhat	M	M	M
Ras Masqa	M	M	M	Rechdibbine	M	M	M	Zakroun	M	M	M
Zgharta El-Mtaouile	M	M	M								

Bcharre

Municipality	26-Mar	27-Mar	28-Mar	Municipality	26-Mar	27-Mar	28-Mar	Municipality	26-Mar	27-Mar	28-Mar
Aabdine	M	M	M	Bane	L	L	L	Barhelioun	M	M	M
Bazouone	VL	VL	VL	Becharre	L	L	L	Beit Menzer	M	M	M
Billa	M	M	M	Blaouza	M	M	M	Bqaa Kafra	VL	VL	VL
Bqerqacha	VL	VL	VL	Breissat	L	L	L	Dimane	L	L	L
Hadath El Jobbeh	L	L	L	Hadchit	L	L	L	Hasroun	L	L	L
Mazraat Aassaf	M	M	M	Mazraat Bani Saab	M	M	M	Mchaa El-Jobbeh	VL	VL	VL
Metrit	M	M	M	Moghr El-Ahoual	M	M	M	Ouadi Qannoubine	M	M	M
Qanat	M	M	M	Qnayouer	M	M	M	Tourza	M	M	M

Batroun

Municipality	26-Mar	27-Mar	28-Mar	Municipality	26-Mar	27-Mar	28-Mar	Municipality	26-Mar	27-Mar	28-Mar
Aabrine	M	M	M	Aalali	M	M	M	Aartiz	M	M	M
Abdelli	M	M	M	Ajdabra	M	M	M	Assia	M	M	M
Basbina	M	M	M	Batroun	M	M	M	Bcheleh	M	M	M
Bechtoudar	M	M	M	Beit Chlala	M	M	M	Beit Kassab	M	M	M
Bijdarfil	M	M	M	Bqesmaya	M	M	M	Chatine	L	L	L
Chebtin	M	M	M	Chekka	M	M	M	Daael	M	M	M
Dahr Abi Yaghi	L	L	L	Daraya El-Batroun	M	M	M	Deir Billa	M	M	M
Deir Kfifane	M	M	M	Deir Mar Youhanna EL	M	M	M	Deir Mar Youssef Jra	M	M	M
Douma	ML	ML	ML	Douq	M	M	M	Eddeh El-Batroun	M	M	M
Ftahat El-Batroun	M	M	M	Ghouma	M	M	M	Hadtoun	ML	ML	ML
Hamat	M	M	M	Harbouna	M	M	M	Hardine	M	M	M
Helta	M	M	M	Hery	M	M	M	Jebila	M	M	M
Jrabta El-Batroun	M	M	M	Jrane El-Batroun	M	M	M	Kfar Aabida	M	M	M
Kfar Halda	M	M	M	Kfarb Shlaimane	M	M	M	Kfarhatna	M	M	M
Kfarhay	M	M	M	Kfarhelos	M	M	M	Kfifane	M	M	M

Kfour El Arabi	ML	ML	ML	Koubba	M	M	M	Kour	M	M	M
Mar Mama	ML	ML	ML	Masrah	M	M	M	Mehmarch	M	M	M
Mrah Chdid	M	M	M	Mrah El Ziyat	M	M	M	Mrah El-Hajj	M	M	M
Nahle El-Batroun	M	M	M	Niha El-Batroun	ML	ML	ML	Oujah El-Hajjar	M	M	M
Ouata Houb	L	L	L	Qatnaaoun	M	M	M	Racha	M	M	M
Rachana	M	M	M	Rachkida	M	M	M	Ram El-Batroun	VL	VL	VL
Ras Nahhach	M	M	M	Selaata	M	M	M	Sghar	M	M	M
Smar Jbayl	M	M	M	Sourat El-Batroun	M	M	M	Tannourine El-Faouqa	L	L	L
Tannourine Et-Tahta	L	L	L	Thoum	M	M	M	Toula El-Batroun	M	M	M
Zan	M	M	M								

Zgharta

Municipality	26-Mar	27-Mar	28-Mar	Municipality	26-Mar	27-Mar	28-Mar	Municipality	26-Mar	27-Mar	28-Mar
Aachach	M	M	M	Aalma	M	M	M	Aarde	M	M	M
Aintourine	M	M	M	Arabet Qozhaya	M	M	M	Arde	M	M	M
Arjis	M	M	M	Asnoun	M	M	M	Ayto	M	M	M
Basloukit	VL	VL	VL	Bchannine	M	M	M	Besebeel	M	M	M
Bhairat Toula	M	M	M	Bnachee	M	M	M	Boussit	M	M	M
Danha	M	M	M	Daraiya Zgharta	M	M	M	Deir Jdeide	M	M	M
Ehden	L	L	L	Halan	M	M	M	Hariq Zgharta	M	M	M
Houakir	M	M	M	Hraiqis	M	M	M	laal	M	M	M
Ijbaa	M	M	M	Karm Saddeh	M	M	M	Kfarchakhna	M	M	M
Kfardlaqous	M	M	M	Kfarfou	M	M	M	Kfarhata Zgharta	M	M	M
Kfarhoura	M	M	M	Kfarsghab	L	L	L	Kfaryachit	M	M	M
Kfarzaina	M	M	M	Khaldiye	M	M	M	Mazraat Ajbeaa	M	M	M
Mazraat Et-Teffah	M	M	M	Mazraat Jneid	M	M	M	Mejdlaia Zgharta	M	M	M
Merh Kfarsghab	M	M	M	Miryata	M	M	M	Miziara	M	M	M
Mzraat Kefraya	M	M	M	Qorah Bach	M	M	M	Rachiine	M	M	M
Ras Kifa	M	M	M	Sakhra	M	M	M	Sebelh Zgharta	M	M	M
Serhel	M	M	M	Tallet Zgharta	M	M	M	Toula Zgharta	M	M	M
Zgharta	M	M	M								

Minieh-Denniye

Municipality	26-Mar	27-Mar	28-Mar	Municipality	26-Mar	27-Mar	28-Mar	Municipality	26-Mar	27-Mar	28-Mar
Aasaymout	ML	ML	L	Aaymar	M	M	M	Aazki	M	M	M
Ain El-Tineh-Miniyeh	L	L	L	Assoun	M	M	M	Bakhaaoun	ML	M	ML
Bchennata	L	L	L	Bechehara	M	M	M	Beddawi	M	M	M
Behouaita	M	M	M	Beit El Foqss	L	L	L	Beit Haouik	ML	ML	ML
Beit Zoud	M	M	M	Bekaasafrine	VL	VL	VL	Borj El Yahoudiyeh	M	M	M
Bqarsouna	L	L	L	Btermaz	M	M	M	Debaael	M	M	M
Deir Ammar	M	M	M	Deir Nbough	M	M	M	Haouaret-Miniyeh	L	L	L
Haql el Azimeh	M	M	M	Harf El Siyad	ML	ML	ML	Hazmiye-Miniyeh	L	L	L
Izal	M	M	M	Jarjour	M	M	M	Jayroun	L	L	L
Kahf El-Malloul	M	M	M	Karm El-Moher	L	L	L	Kfar Binine	VL	VL	VL
Kfarchalane	M	M	M	Kfarhabou	M	M	M	Kharroub-Miniyeh	M	M	M
Mazraat El-Kreme	M	M	M	Mazraat Ketrane	M	M	M	Merkebtta	M	M	M
Minyeh	M	M	M	Mrah El Sfirat	ML	ML	ML	Mrah Sraj	M	M	M
Mrebbine	L	L	L	Nabi Youcheaa	M	M	M	Nemrine	L	L	L

Qarhaiya	M	M	M	Qarne	L	L	L	Qarsita	L	L	L
Qattineh-Miniyeh	M	M	M	Qemmamine	L	L	L	Qraine	M	M	M
Raouda-Aadoua	M	M	M	Rihaniyet-Miniyeh	M	M	M	Sfireh	L	L	L
Sir Ed-Danniyeh	M	M	M	Tarane	M	M	M	Terbol-Miniyeh	M	M	M
Zaghartaghrine	M	M	M	Zouq Bhannine	M	M	M				

Nabatiye

Nabatiye

Municipality	26-Mar	27-Mar	28-Mar	Municipality	26-Mar	27-Mar	28-Mar	Municipality	26-Mar	27-Mar	28-Mar
Aabba	M	M	M	Aazzi	M	M	M	Adchit El-Chqif	M	M	M
Ain Bou Swar	M	M	M	Ain Kana	M	M	M	Ali El-TaHER	M	M	M
Ansar	M	M	M	Arab Salim	M	M	M	Arnoun	M	M	M
Bfaroue	M	M	M	Breyqaah	M	M	M	Charqiyeh	M	M	M
Choukine	M	M	M	Deir El Zahrani	M	M	M	Doueir El-Nabatiyeh	M	M	M
Habbouch El-Nabatiye	M	M	M	Hamra El-Nabatiyeh	M	M	M	Harouf El-Nabatiyeh	M	M	M
Hmaile	M	M	M	Houmin El Faouqa	M	M	M	Houmin El Tahta	M	M	M
Jarjough	ML	ML	ML	Jbaah El-Nabatiyeh	ML	ML	ML	Jebchit	M	M	M
Kfar Djal El-Nabatiy	M	M	M	Kfar Remmane	M	M	M	Kfar Sir	M	M	M
Kfar Tebnit	M	M	M	Kfarfila	M	M	M	Kfour El-Nabatieh	M	M	M
Mayfadoun	M	M	M	Mazraat Bsaffour	M	M	M	Mazraat Chalbaal	M	M	M
Mazraat Dmoul	M	M	M	Mazraat El Khreibeh	M	M	M	Mazraat El-Bayad El-	M	M	M
Mazraat Kfarjaouz	M	M	M	Mazraat Qalaat Meiss	M	M	M	Nabatiyeh El-Fawka	M	M	M
Nabatiyeh Et-Tahta	M	M	M	Namiriyeh	M	M	M	Qaaqaaiyet El Jisr	M	M	M
Qossabeh El-Nabatiy	M	M	M	Roumine	M	M	M	Sarba El-Nabatieh	M	M	M
Sir El-Gharbiyeh	M	M	M	Toul	M	M	M	Yehmor El-Nabatiyeh	M	M	M
Zaoutar El Charqiyeh	M	M	M	Zaoutar El-Gharbiyeh	M	M	M	Zebdine El-Nabatiyeh	M	M	M
Zefta	M	M	M								

Hasbaiya

Municipality	26-Mar	27-Mar	28-Mar	Municipality	26-Mar	27-Mar	28-Mar	Municipality	26-Mar	27-Mar	28-Mar
Aain Jarfa	ML	ML	ML	Abou Qamha	M	M	M	Ain Qania	M	M	M
Bourghos	M	M	M	Chebaa	M	M	M	Chouaya Hasbaya	M	M	M
Dellafeh	M	M	M	Fardiss Hasbaiya	M	M	M	Hasbaya	M	M	M
Hbariyeh	ML	ML	ML	Kaoukaba Hasbaiya	M	M	M	Kfar Chouba	ML	ML	ML
Kfar Hamam	ML	ML	ML	Kfeir El-Zait	M	M	M	Khalwat Hasbaya	ML	ML	ML
Khreibet Hasbaiya	M	M	M	Majidiyeh Hasbaiya	M	M	M	Marj Ez-Zhour (Haouc	M	M	M
Meri	M	M	M	Mimass	M	M	M	Rachaiya El-Fokhar	ML	ML	ML
Salaiyeb	M	M	M								

Marjayoun

Municipality	26-Mar	27-Mar	28-Mar	Municipality	26-Mar	27-Mar	28-Mar	Municipality	26-Mar	27-Mar	28-Mar
Aalmane Marjaayoun	ML	ML	ML	Aamra	M	M	M	Adayseh Marjaayoun	ML	ML	ML
Adchit El-Koussair	M	M	M	Ain Aarab Marjaayoun	M	M	M	Bani Haiyann	M	M	M
Blatt Marjaayoun	M	M	M	Blida	VL	VL	VL	Borj El-Moulouk	M	M	M
Boueyda Marjaayoun	M	M	M	Deir Mimass	M	M	M	Deir Siriane	M	M	M
Dibbine	M	M	M	Ebel El Saqi	M	M	M	Houla	ML	ML	ML
Houra	M	M	M	Kfar Kila	M	M	M	Khiam Marjaayoun	M	M	M

Klayaa	M	M	M	Majdel Selem	ML	ML	ML	Marjaayoun	M	M	M
Markaba	M	M	M	Mays El-Jabal	L	L	L	Mazraat Doumiat	M	M	M
Mazraat Sarada	M	M	M	Mhaibib	VL	VL	VL	Qabriqha	M	M	M
Qantara	M	M	M	Rab El-Thalathine	M	M	M	Saouaneh Marjayoun	L	L	L
Talloussa	ML	ML	ML	Taybeh Matjaayoun	M	M	M	Touline	L	L	L

Bent Jbail

Municipality	26-Mar	27-Mar	28-Mar	Municipality	26-Mar	27-Mar	28-Mar	Municipality	26-Mar	27-Mar	28-Mar
Ain-Ebel	VL	VL	VL	Aitaroun	VL	VL	VL	Aynata Bint Jbeil	VL	VL	VL
Ayta El-Chaeb	L	VL	VL	Ayta El-Jabal	VL	VL	VL	Beit Lif	VL	VL	VL
Beit Yahoun	VL	VL	VL	Bint Jbeil	VL	VL	VL	Borj Qalaway	L	L	L
Braachit	VL	VL	VL	Chakra	L	L	L	Debel	VL	VL	VL
Deir Antar	VL	VL	VL	Froun	M	M	M	Ghandouriyeh Bint Jb	M	M	M
Hanine	VL	VL	VL	Hariss	VL	VL	VL	Hdatha	VL	VL	VL
Jmeymeh	VL	VL	VL	Kafra Bint Jbeil	VL	VL	VL	Kfar Dounine	L	L	L
Khirbet Selm	VL	VL	VL	Kounine	VL	VL	VL	Maroun El Ras	VL	VL	VL
Qalaway	L	L	L	Qaouzah	L	VL	VL	Qatmoun	L	VL	VL
Ramya Bint Jbeil	VL	VL	VL	Rchaf	VL	VL	VL	Rmeich	L	VL	VL
Safad Al Battikh	VL	VL	VL	Salhaneh	VL	VL	VL	Serbine	VL	VL	VL
Sultanieh Bint Jbeil	VL	VL	VL	Tibnine	VL	VL	VL	Tiri	VL	VL	VL
Yaroun	VL	VL	VL	Yater	VL	VL	VL				

Mont Liban

Jbail

Municipality	26-Mar	27-Mar	28-Mar	Municipality	26-Mar	27-Mar	28-Mar	Municipality	26-Mar	27-Mar	28-Mar
Aabeydat	L	L	L	Aalita	L	L	L	Aamchit	M	M	M
Aarab El-Lahib	VL	VL	VL	Aarasta	VL	VL	VL	Adonis Jbeil	VL	VL	VL
Afqa Jbeil	VL	VL	VL	Ain El Delbeh Jbeil	VL	VL	VL	Ain El-Ghouayba	VL	VL	VL
Ain Jrain	VL	VL	VL	Ain Kfah	M	M	M	Almat El Chemaliyat	VL	VL	VL
Almat El-Jenoubiya	VL	VL	VL	Aqoura	VL	VL	VL	Bayzoun	VL	VL	VL
Bchille Jbeil	VL	VL	VL	Bechtida	L	L	VL	Behdaydat	L	L	L
Beit Habbaq	ML	ML	ML	Bejjeh	M	M	M	Bekhaaz	M	M	M
Berbara Jbeil	M	M	M	Bintael	L	L	L	Birket Hjoula	L	L	L
Blatt Jbeil	ML	ML	ML	Boulhos	VL	VL	VL	Breyj Jbeil	VL	VL	VL
Chamat	M	M	M	Chikhane	M	M	M	Chmout	M	M	M
Eddeh Jbeil	M	M	M	Ehmej	VL	VL	VL	Fatre	L	L	L
Ferhet	VL	VL	VL	Fghal	M	M	M	Frat	VL	VL	VL
Ghabat	VL	VL	VL	Ghalboun	M	M	M	Gharzouz	M	M	M
Ghofrine	M	M	M	Habil	L	L	VL	Halate	L	L	L
Haqel	L	L	L	Hbaline	M	M	M	Hboub	ML	ML	ML
Hdeine	VL	VL	VL	Hema Er-Rehban	VL	VL	VL	Hema Mar Maroun Aann	VL	VL	VL
Hjoula	L	L	VL	Hosrayel	M	M	M	Hsarat	M	M	M
Hsoun	VL	VL	VL	Jaj	VL	VL	VL	Janne	VL	VL	VL
Jbeil	M	M	M	Jeddeyl Jbeil	M	M	M	Jlisse	L	L	L
Jouret El-Qattine	VL	VL	VL	Kfar Baal Annaya	VL	VL	VL	Kfar Kidde	M	M	M
Kfar Kouas	L	L	L	Kfar Mashoun	M	M	M	Kfoun	L	L	L

Kharbe Jbeil	M	M	M	Laqlouq	VL	VL	VL	Lassa	L	L	L
Lehfed	L	L	L	Maad	M	M	M	Mar Sarkis	L	L	L
Mastita	L	L	L	Mayfouq	L	L	L	Mazraat El Siyad	VL	VL	VL
Mazraat El-Maaden	VL	VL	VL	Mechane	VL	VL	VL	Mechmech Jbeil	L	L	VL
Mehrin	ML	ML	ML	Mejdel El-Akoura	L	L	L	Mghayreh Jbeil	L	L	L
Mounsef	M	M	M	Nahr Ibrahim	M	M	M	Qahmez	VL	VL	VL
Qartaba	L	L	L	Qartaboun	ML	ML	ML	Qattara Jbeil	VL	VL	VL
Qorqraya	VL	VL	VL	Ramout	ML	ML	ML	Ras Osta	VL	VL	VL
Rihane Jbeil	M	M	ML	Sakiet El-Khayt	ML	ML	L	Saqi Richmaya	VL	VL	VL
Sebrine	VL	VL	VL	Seraita	VL	VL	VL	Souane Jbeil	VL	VL	VL
Tadmor	VL	VL	VL	Tartej	VL	VL	VL	Torzaiya	VL	VL	VL
Yanouh Jbeil	ML	ML	ML	Zibdine Jbeil	L	L	L				

El Metn

Municipality	26-Mar	27-Mar	28-Mar	Municipality	26-Mar	27-Mar	28-Mar	Municipality	26-Mar	27-Mar	28-Mar
Aain El-Qabu	VL	VL	VL	Aain El-Qach	VL	VL	VL	Aain El-Teffaha	VL	VL	VL
Aain el-Safssaf El-M	VL	VL	VL	Abou Mizane	VL	VL	VL	Ain Aar	L	L	L
Ain Alaq	VL	VL	VL	Ain El-Kharroube	VL	VL	VL	Ain El-Sendianeh	VL	VL	VL
Ain El-Zeitoune	VL	VL	VL	Ain Saadeh	M	M	M	Aintoura El-Matn	VL	VL	VL
Amaret Chalhoub	M	M	M	Antelias	M	M	M	Atchaneh	VL	VL	VL
Ayroun	VL	VL	VL	Baabdat	L	L	L	Baouchariyeh	M	M	M
Baskinta	VL	VL	VL	Beit Chabab	L	L	L	Beit El-Chaar	M	M	M
Beit El-Kekko	L	L	L	Beit Mery	M	M	M	Bhersaf	VL	VL	VL
Bikfaya	VL	VL	VL	Biyakout	M	M	M	Bnabil	VL	VL	VL
Bourj Hammoud	M	M	M	Bqennaya	M	M	M	Broummana El-Matn	ML	ML	ML
Bsalim	M	M	M	Bsifrine	L	L	L	Bteghrine	VL	VL	VL
Chaouiye	L	L	L	Chouaya El-Matn	VL	VL	VL	Choueir	VL	VL	VL
Chrine	VL	VL	VL	Dahr El Sawan El-Mat	VL	VL	VL	Daychouniyeh	M	M	M
Dbayeh	M	M	M	Deir Chamra	VL	VL	VL	Deir Mar Abda el Mch	M	M	M
Deir Mar Roukouz	M	M	M	Deir Tamiche	M	M	M	Dik El-Mehdi	M	M	M
Dikwaneh	M	M	M	Douar El-Matn	VL	VL	VL	Fanar	M	M	M
Fraike	L	L	L	Haret El-Ballaneh	M	M	M	Hbous	VL	VL	VL
Himlaya	VL	VL	VL	Jal El Did	M	M	M	Jdeideh El-Metn	M	M	M
Jouar El-Matn	VL	VL	VL	Jouret El-Ballout	M	M	M	Kaaqour	L	L	L
Kfar Aaqab	VL	VL	VL	Kfertay El-Matn	VL	VL	VL	Khenchara	VL	VL	VL
Khillat El-Mtain	VL	VL	VL	Konnabat Broummana	ML	ML	ML	Konnabat Salima	L	L	L
Machraah El-Matn	VL	VL	VL	Majdel Tarchich	VL	VL	VL	Majzoub	M	M	M
Mansouriyeh El-Metn	M	M	M	Mar Boutros Karm Et-	VL	VL	VL	Mar Chaya et Mzekke	L	L	L
Mar Moussa Ed-Douar	VL	VL	VL	Marjaba	VL	VL	VL	Masqa	L	L	L
Mayasse	VL	VL	VL	Mazraat Deir Aoukar	M	M	M	Mazraat El-Hadirat	M	M	M
Mazraat Yachouh	M	M	M	Mchikha	VL	VL	VL	Menqlet Mezher	M	M	M
Mhaydseh Matn	VL	VL	VL	Mkalles	M	M	M	Mrouj	VL	VL	VL
Mtain	L	L	L	Mtayleb	M	M	M	Nabay	M	M	M
Naccache	M	M	M	Ouadi Chahine	VL	VL	VL	Ouadi El-Karm El-Mat	VL	VL	VL
Ouata El-Mrouj	VL	VL	VL	Ouyoun El-Matn	L	L	L	Qornet Chehwan	ML	ML	ML
Qornet El-Hamra	ML	ML	ML	Roumieh	M	M	M	Sfeilet Bikfaya	VL	VL	VL
Sinn El-Fil	M	M	M	Zabbougha	VL	VL	VL	Zalqa	M	M	M

Zarououn	L	L	L	Zekrite	M	M	M	Zighrine El-Matn	VL	VL	VL
Zouk El-Khrab	M	M	M								

Chouf

Municipality	26-Mar	27-Mar	28-Mar	Municipality	26-Mar	27-Mar	28-Mar	Municipality	26-Mar	27-Mar	28-Mar
Aalmane El-Chouf	M	M	M	Aammq El-Chouf	ML	ML	ML	Ain Ouzein	VL	VL	VL
Ain Qani	VL	VL	VL	Ain Zhalta	VL	VL	VL	Ainbal	L	L	L
Amatour	L	L	L	Anout	ML	ML	ML	Atrine	L	L	L
Baadarane	VL	VL	VL	Baaqline	L	L	L	Baasir	M	M	M
Barja	M	M	M	Barouk	L	L	L	Bater	L	L	L
Batloun	VL	VL	VL	Bayqoun	L	L	L	Bchetfine	ML	ML	ML
Beiteddine	L	L	L	Benouati Ech-Chouf	ML	ML	ML	Berjein	ML	ML	ML
Bireh et Mtalleh	VL	VL	VL	Biret El-Chouf	VL	VL	VL	Bkechtine Ouel Mchei	L	L	L
Bkifa El-Chouf	ML	ML	ML	Botme	VL	VL	VL	Bqaiaa Ech-Chouf	ML	ML	ML
Bsaba El-Chouf	L	L	L	Chammis El-Chouf	M	M	M	Chehim	ML	ML	ML
Chemaarine	L	L	L	Chourit	L	L	L	Daher El-Chouf	ML	L	L
Dalhoun	M	M	M	Damour	M	M	M	Daraya El-Chouf	L	L	L
Deir El-Moukhalles	L	L	L	Deir Baba	M	M	M	Deir Dourit	L	L	L
Deir El-Qamar	L	L	L	Deir Kouche	M	M	M	Dibbieh	L	L	L
Dmit	M	M	M	Fouara Jaafar	VL	VL	VL	Fraidis El-Chouf	VL	VL	VL
Ghabet Jaafar	M	M	M	Gharife	L	L	L	Haret Jandal	VL	VL	VL
Hasrout	L	L	L	Jadra	M	M	M	Jahlieh	ML	ML	ML
Jbeih El-Chouf	L	L	L	Jdeidet El-Chouf	VL	VL	VL	Jiyeh	M	M	M
Jleilyeh	L	L	L	Jmailiyeh	M	M	M	Joun	ML	ML	ML
Kahlounie El-Chouf	VL	VL	VL	Ketermaya	M	M	M	Kfar Faqoud	ML	ML	ML
Kfar Hamal	L	L	L	Kfar Him	M	M	M	Kfar Katra	L	L	L
Kfar Niss	L	L	L	Kfar hay	L	L	L	Kfarnabrakh	L	L	L
Khirbet Bisri	L	L	L	Knayse El-Chouf	M	M	M	Maaniyeh	M	M	M
Maasser Beiteddine	L	L	L	Maasser El-Chouf	L	L	L	Majdalouna	M	M	M
Majdel El-Meouch	L	L	L	Mazboud	ML	ML	ML	Mazmoura	L	L	L
Mazraat El Chouf	L	L	L	Mazraat El Daher	L	L	L	Mazraat El-Douair	L	L	L
Mechref	ML	ML	ML	Mghairie	M	M	M	Mghayrie El-Chouf	M	M	M
Moukhtara	VL	VL	VL	Mrusti	L	L	L	Mtolle	L	L	L
Naameh	M	M	M	Niha El-Chouf	L	L	L	Ouadi Abou Yousef	L	L	L
Ouadi Ed-Deir	M	M	M	Ouadi El-Sit	VL	VL	VL	Ouadi bnehlay	ML	ML	ML
Qraibeh	VL	VL	VL	Qreiaa	L	L	L	Rmayle El-Chouf	M	M	M
Semqaniyeh	L	L	L	Sibline	M	M	M	Sirjbeil	M	M	M
Warhanieh	VL	VL	VL	Werdaniyeh	M	M	M	Zaarourieh	L	L	L

Baabda

Municipality	26-Mar	27-Mar	28-Mar	Municipality	26-Mar	27-Mar	28-Mar	Municipality	26-Mar	27-Mar	28-Mar
Abadiyeh	ML	ML	ML	Ain Mouaffaq	L	L	L	Araiya	M	M	M
Arbaniyeh	L	L	L	Arsoun	VL	VL	VL	Baabda	M	M	M
Baalchmey	L	L	L	Bmaryam	VL	VL	VL	Bourj El-Brajneh	M	M	M
Boutchay	M	M	M	Bsaba Baabda	M	M	M	Btekhney	VL	VL	VL
Btibyat	VL	VL	VL	Bzebdine	VL	VL	VL	Chbeniyeh	VL	VL	VL
Chiyah	M	M	M	Chmeisset Baabda	L	L	L	Chouit	M	M	M
Deir El-harf	VL	VL	VL	Deir Khouna	L	L	L	Dlaybeh	L	L	L

Falougha	VL	VL	VL	Furn El-Chebbak	M	M	M	Hadath Beyrouth	M	M	M
Halaliyeh Baabda	L	L	L	Hammana	VL	VL	VL	Haret El Sett	M	M	M
Haret Hamze	L	L	L	Haret Hreik	M	M	M	Hasbaiya El-Metn	VL	VL	VL
Jouar El-Hoz	VL	VL	VL	Jouret Arsoun	VL	VL	VL	Kfar Chima	M	M	M
Kfar Selouane	VL	VL	VL	Khalouat Baabda	VL	VL	VL	Kneisset Baabda	L	L	L
Laylakeh	M	M	M	Louayzeh Baabda	M	M	M	Merdache	M	M	M
Mzairaa Baabda	L	L	L	Ouadi Chahrour El Ol	M	M	M	Ouadi Chahrour El So	M	M	M
Qalaa Baabda	VL	VL	VL	Qhraybe Baabda	VL	VL	VL	Qobbayaa	L	L	L
Qornayel	VL	VL	VL	Qortada	M	M	M	Qrayeh Baabda	L	L	L
Qsaibeh Baabda	ML	ML	ML	Qtale Baabda	L	L	L	Ras El Metn	L	L	L
Ras El-Haref	L	L	L	Rouayset El-Ballout	L	L	L	Salima Baabda	L	L	L
Tahouitat El Ghadir	M	M	M	Tarchich	L	L	L	Zandouqa	M	M	M

Aley

Municipality	26-Mar	27-Mar	28-Mar	Municipality	26-Mar	27-Mar	28-Mar	Municipality	26-Mar	27-Mar	28-Mar
Abey	ML	ML	ML	Aghmid	VL	VL	VL	Ain Dara	VL	VL	VL
Ain Drafil	L	L	L	Ain El Halazoun	VL	VL	VL	Ain El-Rmmaneh	L	L	L
Ain Jedideh	VL	VL	VL	Ain Ksour	L	L	L	Ain Onoub	M	M	M
Ain Traz	L	L	L	Ainab	L	L	L	Aley	L	L	L
Aramoun	ML	ML	ML	Aytat	M	M	M	Azouniyeh	VL	VL	VL
Baawerta	ML	ML	ML	Badghan Oua Wadi Bad	VL	VL	VL	Bassatine	ML	ML	ML
Bayssour	ML	ML	ML	Bchamoun	M	M	M	Bdadoun	ML	ML	ML
Behouara	L	L	L	Bennay	ML	ML	ML	Bhamdoun El-Dayaa	VL	VL	VL
Bhamdoun El-Mhatta	L	L	L	Bkhechtey	VL	VL	VL	Bleibel	M	M	M
Bmaknine	M	M	M	Bmehray	VL	VL	VL	Bouzrid	L	L	L
Bserrine	VL	VL	VL	Bsous	ML	ML	ML	Btalloun	VL	VL	VL
Btater	L	L	L	Chanay	VL	VL	VL	Charoun	VL	VL	VL
Chartoun	L	L	L	Chemlane	ML	ML	ML	Chouefat El-Aamrous	M	M	M
Chouefat El-Oumara	M	M	M	Chouefat El-Quoubbe	M	M	M	Dakkoun	L	L	L
Deir Qoubel	M	M	M	Dfoun	ML	ML	ML	Douair El Remmaneh	L	L	L
Ghaboun	L	L	L	Habramoun	VL	VL	VL	Homs Oua Hama	VL	VL	VL
Houmal	ML	ML	ML	Jisr El Qadi	M	M	M	Kehaleh	M	M	M
Keyfoun	M	M	M	Kfar Aamey	L	L	L	Kommatyeh	ML	ML	ML
Maasrati	L	L	L	Majdel Baana	VL	VL	VL	Mansourieh et Ain El	VL	VL	VL
Mazraat El-Nahr	VL	VL	VL	Mchakhte	VL	VL	VL	Mecherfeh	VL	VL	VL
Mejdaya	ML	ML	ML	Mrayjat	VL	VL	VL	Ramliyah	VL	VL	VL
Rechmaya	L	L	L	Rejmeh	VL	VL	VL	Remhala	L	L	L
Rouaysset El Neemane	VL	VL	VL	Saoufar	VL	VL	VL	Selfaya	M	M	M
Sirhmoul	L	L	L	Souq El Ghareb	ML	ML	ML	Taazanieh	VL	VL	VL

Kesrouane

Municipality	26-Mar	27-Mar	28-Mar	Municipality	26-Mar	27-Mar	28-Mar	Municipality	26-Mar	27-Mar	28-Mar
Achkout	VL	VL	VL	Adma Oua Dafneh	ML	ML	ML	Ain Ed-Delbe Kesroua	VL	VL	VL
Ain El-Rihane	L	L	L	Aintoura Kesrouane	ML	ML	ML	Ajaltoun	VL	VL	VL
Akaybeh Kesrouane	ML	ML	ML	Aramoun Kesrouane	VL	VL	VL	Azra ouel Ozor	VL	VL	VL
Ballouneh	L	L	L	Batha	VL	VL	VL	Bekaatat Achkout	VL	VL	VL
Bekaatat Kanaan	VL	VL	VL	Bizhel	L	L	L	Bouar	ML	ML	ML
Bqaatouta	VL	VL	VL	Bqaq Ed-Dine	M	ML	ML	Bzommar	VL	VL	VL

Chahtoul	VL	VL	VL	Chnaniir	L	L	L	Chouan	VL	VL	VL
Daraya Kesrouane	VL	VL	VL	Darououn	L	L	L	Deir Baqlouch	VL	VL	VL
Dlebta	VL	VL	VL	Eghbeh	VL	VL	VL	Faraya	VL	VL	VL
Fatka	L	L	L	Feytroun	VL	VL	VL	Ghazir	L	L	L
Ghbaleh Kesrouane	VL	VL	VL	Ghedrass	VL	VL	VL	Ghosta	VL	VL	VL
Ghynéh	VL	VL	VL	Harharaya w Kattine	VL	VL	VL	Harissa Kesrouane	VL	VL	VL
Hayata	VL	VL	VL	Hosein	VL	VL	VL	Hrajel	VL	VL	VL
Jdeideh Ghazir	VL	VL	VL	Jeita	M	M	M	Jounieh Ghadir	ML	ML	ML
Jounieh Haret Sakhr	L	L	L	Jounieh Salel Alma	L	L	L	Jounieh Sarba	M	M	M
Jouret Bedrane	VL	VL	VL	Jouret Mhad	VL	VL	VL	Jouret Termos	VL	VL	VL
Kfar Debiane	VL	VL	VL	Kfar Tay Kesrouane	VL	VL	VL	Kfar Yassine	M	M	M
Kfour Kesrouane	VL	VL	VL	Kharayeb Nahr Ibrahi	L	L	L	Klayaat Kesrouane	VL	VL	VL
Maarab	VL	VL	VL	Maaysra Kesrouane	L	L	L	Mayrouba	VL	VL	VL
Mazraat Er-Ras	M	M	M	Mazraat Mrah El-Mir	VL	VL	VL	Mchaa El Ftouh	VL	VL	VL
Mchaa Faraya	VL	VL	VL	Mchaa Kfar Dibiane	VL	VL	VL	Mghaer	VL	VL	VL
Mradiyeh	L	L	L	Nahr Ed-Dahab	VL	VL	VL	Nammoura Kesrouane	L	L	L
Ouata El Jaouz	VL	VL	VL	Ouata Sillam	M	M	M	Raachine	VL	VL	VL
Rayfoun	VL	VL	VL	Safra Kesrouane	M	M	M	Shayle Kesrouane	L	L	L
Tabarja	M	M	M	Yahchouch	VL	VL	VL	Zaaytneh	VL	VL	VL
Zeytoun	L	L	L	Zouk Mikael	M	M	M	Zouk Mosbeh	M	M	M

Baalbek_Hermel

Baalbek

Municipality	26-Mar	27-Mar	28-Mar	Municipality	26-Mar	27-Mar	28-Mar	Municipality	26-Mar	27-Mar	28-Mar
Aadous	M	M	M	Aamchki	L	ML	L	Aarsal	M	M	M
Ain Baalbek	M	M	M	Ain Bourday	M	M	M	Ain El-Benye	L	ML	L
Ain El-Jaouz Baalbek	VL	ML	VL	Ain El-Siya Chadoura	L	L	L	Al Khodr Baalbek	M	M	M
Al Nabi Chit	M	M	M	Aynata Baalbek	L	L	L	Baalbek	M	M	M
Bachwat	L	L	L	Barqa	L	L	L	Bednayel Baalbak	M	M	M
Beit Chama	M	M	M	Bijjaje	M	M	M	Bouday	L	L	L
Brital	M	M	M	Btadi	L	L	L	Chaat	M	M	M
Chaibe	L	ML	L	Chlifa	M	M	M	Chmestar	M	M	M
Dar El-Oussa	L	L	L	Deir El-Ahmar	ML	ML	ML	Deir Mar Maroun Baal	M	M	M
Douris	M	M	M	Fakiha	M	M	M	Hadath Baalbek	L	L	L
Ham	ML	ML	ML	Haour Taala	M	M	M	Hizzine	M	M	M
Hlebta	ML	ML	ML	Hosh Barada	M	M	M	Hosh El Dahab	M	M	M
Hosh El Snid	M	M	M	Hosh El-Nabi	M	M	M	Hosh El-Rafiq	M	M	M
Hosh Tal Safiya	M	M	M	Hrebta	ML	ML	ML	laat	M	M	M
Jebaa	L	L	L	Jenta	M	M	M	Kfar Dabach	M	M	M
Kfar Dane	L	L	L	Khraibeh El-Hermel	M	M	M	Khreibet Baalbek	M	M	M
Kneisset Baalbek	M	M	M	Labueh	M	M	M	Maarboun	ML	ML	ML
Majdaloun	M	M	M	Maqneh	M	M	M	Mazraat Beit Mcheik	M	M	M
Misraya	M	M	M	Mograq	M	M	M	Nabha El-Damdoum	L	L	L
Nabi Chbay	ML	M	ML	Nabi Osman	M	M	M	Nahleh baalbek	M	M	M
Ouadi El-Oss	L	L	L	Qaa Baayoun	M	M	M	Qaa Jouar Maqiye	M	M	M
Qaa Ouadi El-Khanzir	M	M	M	Qah Baalbek	M	M	M	Qarha Baalbek	M	M	M

Qsarnaba	M	M	M	Ram Baalbek	ML	ML	ML	Ras Baalbek El Sahl	M	M	M
Ras Baalbek El-Charq	M	M	M	Riha	M	M	M	Saaide	L	L	L
Sboubba	M	M	M	Seriine El-Tahta	M	M	M	Slouqi	M	M	M
Taiba Baalbek	M	M	M	Talia	M	M	M	Taraiya	ML	ML	ML
Temnin El Fawqa	M	M	M	Temnin El-Tahta	M	M	M	Tfail	VL	ML	L
Yahfoufa	M	M	M	Yammouneh	L	L	L	Younine	M	M	M
Zboud	M	M	M								

Hermel

Municipality	26-Mar	27-Mar	28-Mar	Municipality	26-Mar	27-Mar	28-Mar	Municipality	26-Mar	27-Mar	28-Mar
Charbine El-Hermel	M	M	M	Hermel Jbab	ML	ML	ML	Hermel	M	M	M
Maaysra El-Hermel	M	M	M	Michaa Mrajhine	ML	ML	ML	Ouadi Faara	L	L	L
Ras Baalbek - Ouadi	M	M	M	Ras Baalbek El Gharb	ML	ML	ML	Zighrine	L	L	L

Akkar

Akkar

Municipality	26-Mar	27-Mar	28-Mar	Municipality	26-Mar	27-Mar	28-Mar	Municipality	26-Mar	27-Mar	28-Mar
Aain Tinta	M	M	M	Aaiyat	M	M	M	Aakkar El-Aatiqa	L	L	L
Aamar Akkar	M	M	M	Aamar El Baykat	M	M	M	Aamayer	M	M	M
Aamriyet Akkar	M	M	M	Aandqet	M	M	ML	Aarmeh	M	M	ML
Aarqa	M	M	M	Aawaynat	M	M	M	Aayoun Akkar	M	M	M
Abboudiye	M	M	M	Ain El-Zeit	M	M	M	Ain Yaaqoub	ML	ML	L
Akroum	M	M	ML	Aridet Cheikh Zennad	M	M	M	Baldeh w Mazraat Bal	M	M	M
Barcha	M	M	M	Bardeh	M	M	M	Bebnine	M	M	M
Beino	M	M	M	Beit Ayoub	L	L	VL	Beit El-Haouch	M	M	M
Beit Mellat	M	M	M	Beit Younes	L	L	L	Berbara Akkar	M	M	M
Berqayel	M	M	M	Bezbina	L	L	L	Bireh Akkar	M	M	M
Borj	M	M	M	Bqerezla	M	M	M	Bzal	M	M	M
Chane	ML	ML	L	Chaqdouf	M	M	M	Charbila	M	M	M
Cheikh Mohammad	M	M	M	Cheikh Taba Es-Sahl	M	M	M	Cheikh Taba	M	M	M
Cheikh Zennad	M	M	M	Cheikhlar	M	M	M	Chir Hmairine	M	M	M
Daghle	M	M	M	Dahr Laissine	M	M	M	Darine	M	M	M
Dawra	M	M	ML	Dawsa w Baghdadadi	M	M	M	Dayret Nahr El-Kabir	M	M	M
Deir Dalloum	M	M	M	Deir Jennine	M	M	M	Denbou	M	M	M
Dibbabiyyeh	M	M	M	Douair Aadwiyeh	M	M	M	Fassikine	M	M	M
Fnaydek	L	L	L	Fraydes Akkar	M	M	M	Ghazayle	M	M	M
Habchit	ML	M	ML	Hakour	M	M	M	Halba	M	M	M
Haouchab	M	M	M	Hayssat	M	M	M	Haytla	M	M	M
Hayzouq	M	M	M	Hedd	M	M	M	Hmaira Akkar	M	M	M
Hmaiss Akkar	M	M	M	Hnaider	M	M	M	Hokr Ed-Dahri	M	M	M
Hokr Etti	M	M	M	Hokr Jouret Srar	M	M	M	Houaich	M	M	ML
Hrar	ML	ML	ML	Idbil	M	M	M	Ilal	M	M	M
Janine	M	M	M	Jdeidet El-Joumeh	M	M	M	Jdeidet El-Kaiteh	M	M	M
Jebayel	M	M	M	Kafr	ML	ML	ML	Kafr	M	M	M
Karm Asfour	M	M	M	Kfar Melki Akkar	M	M	M	Kfar Noun	M	M	M
Kfarharra	M	M	M	Khalsa	M	M	M	Kharnoubet Akkar	M	M	M

Khirbet Daoud Aakkar	M	M	M	Khirbet El Remmane	M	M	M	Khirbet Shar	M	M	M
Khoreybet El-Jindi	M	M	M	Khreibet Aakkar	M	M	ML	Kneisset Aakkar	M	M	M
Kneisset Hnaider	M	M	M	Knisse	M	M	M	Kroum El-Aarab	M	M	M
Kwachra	M	M	M	Kweykhath	M	M	M	Machta Hammoud	M	M	M
Majdala	M	M	M	Majdel Akkar	M	M	M	Mar Touma	M	M	M
Marlaya Melhem	M	M	M	Mashha	M	M	M	Massoudiye	M	M	M
Mazraat Beit Ghattas	M	M	M	Mazraat En-Nahriye	M	M	M	Mechmech	L	L	L
Memneh	L	L	L	Mhammara	M	M	M	Mighraq Aakkar	M	M	M
Minyara	M	M	M	Mogayteh	M	M	M	Mounjez	M	M	M
Msalla	M	M	M	Mzeihmeh	M	M	M	Nfaiseh	M	M	M
Noura Et-Tahta	M	M	M	Ouadi El-Haour	M	M	M	Ouadi El-Jamous	M	M	M
Ouyoun El-Ghizlane	M	M	M	Qaabarine	M	M	M	Qabaait	M	M	M
Qachlaq	M	M	M	Qantara Aakkar	M	M	M	Qarha Aakkar	M	M	M
Qarqaf	M	M	M	Qboula	M	M	M	Qleiaat Aakkar	M	M	M
Qloud El-Baqie	M	M	M	Qobaiyat Aakkar	M	ML	ML	Qobbat Chamrat	M	M	M
Qorayat	L	L	L	Qornet Aakkar	L	L	L	Qsair Aakkar	M	M	M
Rahbe	M	M	M	Rihaniyet Aakkar	M	M	M	Rmah	M	M	M
Rmoul	M	M	M	Saadine	M	M	M	Sadaqa	L	L	L
Saidnaya	M	M	M	Sammouniye	M	M	M	Sayssouq	M	M	M
Semmaqiye	M	M	M	Semmaqli	M	M	M	Sfinet El-Dreib	M	M	M
Sfinet El-Qaitaa	M	M	M	Sindyanet Zeidane	M	M	M	Souaisset Aakkar	M	M	M
Srar	M	M	M	Tal Abbas El Gharby	M	M	M	Tal Abbas El-Charqy	M	M	M
Tal Biret	M	M	M	Tal Hmayra	M	M	M	Tal Maayan Tal Kiri	M	M	M
Tal Sibel	M	M	M	Tallet Chattaha	M	M	M	Tikrit	M	M	M
Tleil	M	M	M	Tshea	L	L	L	Zawarib	M	M	M
Zouq El Hosniyeh	M	M	M	Zouq El-Haddara	M	M	M	Zouq El-Hbalsa	M	M	M
Zouq El-Mogachrine	M	M	M								

Sud

Sour

Municipality	26-Mar	27-Mar	28-Mar	Municipality	26-Mar	27-Mar	28-Mar	Municipality	26-Mar	27-Mar	28-Mar
Aaiyeh	VL	VL	VL	Aalma El-Chaab	L	VL	VL	Aaytit	L	VL	VL
Abbassiyeeh Sour	M	M	M	Abou Chech	L	L	VL	Ain Abou Abdallah	M	M	M
Ain Baal	L	L	L	Arzoun	M	M	M	Aziyeh	L	L	VL
Baflaya	ML	ML	ML	Barich	ML	ML	ML	Batouliyeh	ML	ML	L
Bayad	VL	VL	VL	Bazouriyeh	ML	ML	ML	Bediass	M	M	M
Bestiyat	M	M	M	Borj El Chemali	M	M	M	Borj En-Naqoura	L	VL	VL
Borj Rahhal	M	M	M	Boustane	L	VL	VL	Btaychiyeh	L	VL	VL
Chaaitiye	L	L	VL	Chameh	L	L	VL	Chehabiye	L	L	L
Chehour	L	L	L	Chihine	L	VL	VL	Debaal Sour	L	L	L
Deir Amess	VL	VL	VL	Deir Kifa	ML	ML	ML	Deir Qanoun El-Ain	L	L	L
Deir Qanoun El-Naher	M	M	M	Derdghaiya	M	M	M	Dhayra	L	VL	VL
Halloussiyeh	M	M	M	Hamoul	L	L	VL	Hanaouey	L	L	VL
Henniye	L	L	VL	Hmairi Sour	M	M	M	Iskandarouna Sour	L	L	VL
Jbal El Botom	VL	VL	VL	Jebbin	L	L	VL	Jennata	M	M	M
Jijim	L	L	VL	Jouaiya	L	L	L	Kneisset Sour	L	L	VL

Maarake	ML	ML	ML	Maaroub	M	M	M	Majadel	L	VL	VL
Majdalzoun	L	L	VL	Mansouri Sour	L	L	VL	Marnba	L	L	L
Marouahine	VL	VL	VL	Mazraat El-Zalloutiy	L	VL	VL	Mazraat Mechref	L	VL	VL
Mazraat Tayr Semhat	L	L	L	Mheilib	M	M	M	Neffakhiyeh	M	M	M
Niha Sour	M	M	M	Ouadi Jilo	L	L	L	Qana	VL	VL	VL
Qolaileh Sour	L	L	L	Rechknayan	VL	VL	VL	Rmadiyah	VL	VL	VL
Selha Sour	M	M	M	Siddiqine	VL	VL	VL	Sour	ML	ML	ML
Srifa	M	M	M	Tayr Debbe	M	M	M	Tayr Felsay	M	M	M
Tayr Harfa	L	L	VL	Touayri	ML	ML	ML	Toura	M	M	M
Yanouh Sour	L	L	L	Yarine	L	VL	VL	Zebqine	VL	VL	VL

Saida

Municipality	26-Mar	27-Mar	28-Mar	Municipality	26-Mar	27-Mar	28-Mar	Municipality	26-Mar	27-Mar	28-Mar
Aanqoun	M	M	M	Aaqtanit	M	M	M	Aarab Ej-Jall	M	M	M
Aarab Tabbaya	M	M	M	Abra Saida	M	M	M	Adloun	M	M	M
Adousiyeh	M	M	M	Ain-El-Deleb	M	M	M	Arzai	M	M	M
Babliyah	M	M	M	Barty	M	M	M	Bissariyeh	M	M	M
Bnaafoul	M	M	M	Bqosta	M	M	M	Bramiy --	M	M	M
Daoudiyeh	M	M	M	Dareb El-Sim	M	M	M	Erkay	M	M	M
Ghassanieh	M	M	M	Ghazieh	M	M	M	Hajjeh	M	M	M
Haret Saida	M	M	M	Hartiyeh	M	M	M	Hlaliye Saida	M	M	M
Insariyat	M	M	M	Jazira Saida	M	M	M	Kafar Bit	M	M	M
Kaoutariyet El-Siyad	M	M	M	Kfar Chellal	M	M	M	Kfar Hatta Saida	M	M	M
Kfar Milke Saida	M	M	M	Khartoum	M	M	M	Khaziz	M	M	M
Khirbet Ed-Douair Sa	M	M	M	Khirbet El-Bassal	M	M	M	Khrayeb Saida	M	M	M
Loubieh	M	M	M	Maghdouche	M	M	M	Majdelyoun	M	M	M
Matariyet El-Choumar	M	M	M	Matayriyeh	M	M	M	Mazraat 'Mseileh	M	M	M
Mazraat 'Snaiber	M	M	M	Mazraat Aarab Soukka	M	M	M	Mazraat Deir Taqla	M	M	M
Mazraat El Yahoudiye	M	M	M	Mazraat El-Housseini	M	M	M	Mazraat El-Mhaydaleh	M	M	M
Mazraat El-Ouasta	M	M	M	Mazraat Jamjim	M	M	M	Mazraat Kaoutariyet	M	M	M
Mazraat Kfar Badda	M	M	M	Mazraat Oussamiyat	M	M	M	Mazraat Sari	M	M	M
Mazraat Sinai	M	M	M	Meemariyeh	M	M	M	Merouaniyeh	M	M	M
Miyeh ou Miyeh	M	M	M	Najjariyeh	M	M	M	Qaaqaiyat El-Snaouba	M	M	M
Qnarit	M	M	M	Qraiye Saida	M	M	M	Saida Ed-Dekermane	M	M	M
Saida El-Oustani	M	M	M	Saida El-Qadimeh	M	M	M	Saida Kefraya	M	M	M
Saksakiyeh	M	M	M	Salhieh Saida	M	M	M	Sarafand	M	M	M
Sfenta	ML	ML	ML	Tafahta	M	M	M	Tanbourit	M	M	M
Tebna	M	M	M	Zaghdraiya	M	M	M	Zeita	M	M	M
Zrariyeh	M	M	M								

Jezzine

Municipality	26-Mar	27-Mar	28-Mar	Municipality	26-Mar	27-Mar	28-Mar	Municipality	26-Mar	27-Mar	28-Mar
Ain El-Mir (El Estab	M	M	M	Anane	L	L	L	Aramta	M	M	M
Ariya	L	L	L	Aychiyeh	ML	ML	ML	Azour	L	L	L
Baba	L	L	L	Bayssour Jezzine	M	M	M	Benoueteh Jezzine	ML	ML	ML
Bhannine	L	L	L	Bisri	L	L	L	Bkassine	L	L	L
Bouslaya	L	L	L	Btedine El-Leqech	L	L	L	Chbail	L	L	L
Choualiq Jezzine	M	M	M	Dahr Ed-Deir	ML	ML	ML	Deir El Qattine	L	L	L

Demachqiyeh	M	M	M	Ghabbatiyeh	ML	ML	ML	Harf Jezzine	L	L	L
Hassaniyeh	M	M	M	Haytouleh	ML	ML	ML	Haytura	L	L	L
Hidab	ML	ML	ML	Homsiyeh	L	L	L	Jabal Toura	ML	ML	ML
Jarmaq	M	M	M	Jensnaya	M	M	M	Jernaya	M	M	M
Jezzine	M	M	M	Karkha	ML	ML	ML	Kfar Falous	M	M	M
Kfar Houna	ML	ML	ML	Kfar Jarrah	M	M	M	Lebaa	M	M	M
Louayzet Jezzine	ML	ML	ML	Machmouche	L	L	L	Mahmoudiyeh Jezzine	M	M	M
Maknounye Jezzine	L	L	L	Maraat Ouazaiyeh	ML	ML	ML	Mazraat Daraya	ML	ML	ML
Mazraat El-Aarqoub	ML	ML	ML	Mazraat El-Mathane	L	L	L	Mazraat El-Rahbane	L	L	L
Mazraat Khallet Khaz	ML	ML	ML	Mazraat Louzid (Loua	L	L	L	Mazraat Qrouh	M	M	M
Mazraat Tamra	M	M	M	Mazraat Zighrine Jez	ML	ML	ML	Mazraat	L	L	L
Mharbiyeh	M	M	M	Midane Jezzine	ML	ML	ML	Mjeydel Jezzine	M	M	M
Mliikh	ML	ML	ML	Mrah El-Hbasse	M	M	M	Ouadi Baanqoudaine	M	M	M
Ouadi El-Laymoun	M	M	M	Ouardiyeh	L	L	L	Qabaa Jezzine	L	L	L
Qatrani	ML	ML	ML	Qaytouleh	L	L	L	Qtaleh Jezzine	L	L	L
Rihane Jezzine	ML	ML	ML	Rimat	L	L	L	Roum	L	L	L
Roummanet	M	M	M	Sabbah	L	L	L	Saydoun	ML	ML	ML
Sfaray	L	L	L	Snaya	L	L	L	Sojoud	ML	ML	ML
Srayri	ML	ML	ML	Taaid	ML	ML	ML	Wadi Jezzine	ML	ML	ML
Zhalta	L	L	L								

Bekaa

West Bekaa

Municipality	26-Mar	27-Mar	28-Mar	Municipality	26-Mar	27-Mar	28-Mar	Municipality	26-Mar	27-Mar	28-Mar
Aammiq BG	M	M	M	Ain El Tineh BG	ML	ML	ML	Ain Zebdeh	M	M	M
Ana	M	M	M	Aytanit	ML	ML	ML	Baaloul BG	M	M	M
Bab Mareh	M	M	M	Chouberqiye Aammiq	M	M	M	Dakoue	M	M	M
Deir Ain El-Jaouze	M	M	M	Deir Tahniche	M	M	M	Ghaza	M	M	M
Harime El-Soughra	M	M	M	Hoch Harimeh	M	M	M	Jazira BG	M	M	M
Jib Jennine	M	M	M	Kamed-El-Laouz	M	M	M	Kefraya BG	M	M	M
Khiara El Atika	M	M	M	Khiara	M	M	M	Khirbet Qanafar	M	M	M
Lala	M	M	M	Lebbaya BG	M	M	M	Loussa	M	M	M
Machghara	M	M	M	Manara (Hammara) BG	ML	ML	ML	Mansoura BG	M	M	M
Marej BG	M	M	M	Maydoun	M	M	M	Ouaqf BG	M	M	M
Qaraaoun	M	M	M	Qelya	M	M	M	Raouda (Istabel)	M	M	M
Saghbine	M	M	M	Sohmor	M	M	M	Soltan Yacoub el Ara	M	M	M
Souairy	M	M	M	Sultan Yaacoub	M	M	M	Tal Znoub	M	M	M
Yehmor BG	M	M	M	Zilaya	M	M	M				

Zahle

Municipality	26-Mar	27-Mar	28-Mar	Municipality	26-Mar	27-Mar	28-Mar	Municipality	26-Mar	27-Mar	28-Mar
Aanjar (Haouch Mouss	M	M	M	Ablah	M	M	M	Ain Kfarzabad	M	M	M
Ali-El-Nahri	M	M	M	Bar Elias	M	M	M	Bouarej	M	M	M
Cheberqiyet Tabet	M	M	M	Chtaura	M	M	M	Deir El Ghazal	M	M	M
Delhamiyet Zahle	M	M	M	Ferzol	M	M	M	Haouch El-Ghanam	M	M	M
Haouch Es-Siyadeh	M	M	M	Haouch Hala	M	M	M	Haouch Mandara	M	M	M

Haouch Qayssar	M	M	M	Hezerta	M	M	M	Hosh Moussa	M	M	M
Jdita	M	M	M	Kfarzabad	M	M	M	Ksara	M	M	M
Majdel Aanjar	M	M	M	Makssi	M	M	M	Massa	M	M	M
Mazraat Er-Remtaniye	ML	ML	ML	Mrayjat Zahle	M	M	M	Mzaraa Zahle	M	M	M
Nabi Ayla	M	M	M	Nasriyet Rizk	M	M	M	Nasriyet Zahle	M	M	M
Niha Zahle	M	M	M	Ouadi Ed-Deloum	M	M	M	Ouadi El-Arayech	M	M	M
Qaa El Rim	M	M	M	Qab Elias	M	M	M	Qousaya	ML	ML	ML
Rhit	M	M	M	Riyak	M	M	M	Saadnayel	M	M	M
Taal El-Akhdar	M	M	M	Taalbeya	M	M	M	Taanayel	M	M	M
Talamara	M	M	M	Tcheflik Edde Haouch	M	M	M	Tcheflik Qiqano	M	M	M
Terbol Zahle	M	M	M	Touaite Zahle	M	M	M	Zahle Aradi	M	M	M
Zahle El-Berbara	M	M	M	Zahle El-Maallaqa	M	M	M	Zahle El-Midane	M	M	M
Zahle Er-Rassiye	M	M	M	Zahle Haouch El-Ouma	M	M	M	Zahle Haouch El-Ouma	M	M	M
Zahle Haouch Ez-Zara	M	M	M	Zahle Maalaqa Aradi	M	M	M	Zahle Mar Antonios	M	M	M
Zahle Mar Elias	M	M	M	Zahle Mar Gerios	M	M	M	Zahle Saydet En-Naja	M	M	M
Zebdoul	M	M	M								

Rachaiya

Municipality	26-Mar	27-Mar	28-Mar	Municipality	26-Mar	27-Mar	28-Mar	Municipality	26-Mar	27-Mar	28-Mar
Ain Arab Rachaiya	M	M	M	Ain Ata	M	M	M	Ain Harche	M	M	M
Aqabe Rachaya	M	M	M	Ayha	M	M	M	Ayta El Fokhar	M	M	M
Bakifa Rachaya	M	M	M	Bakka	M	M	M	Beit Lahya	M	M	M
Bireh Rachaiya	M	M	M	Daher El Ahmar	M	M	M	Deir El-Achayer	M	M	L
Heloua Rachaiya	M	M	L	Hoch El Qannabeh Rac	M	M	M	Kaoukaba Bou Arab	M	M	M
Kfar Danis	M	M	M	Kfar Mechki	M	M	M	Kfar Qouq	M	M	M
Kherbet Rouha	M	M	M	Majdel Balhiss	M	M	M	Mdoukha	M	M	M
Mhaydseh Rachaiya	M	M	M	Nabi Safa	M	M	M	Rachaiya	M	M	M
Rafid Rachaiya	M	M	M	Selsata (Mazraat Dei	M	M	M	Tannoura	M	M	M
Yanta	M	M	ML								

Beyrouth

Beyrouth

Municipality	26-Mar	27-Mar	28-Mar	Municipality	26-Mar	27-Mar	28-Mar	Municipality	26-Mar	27-Mar	28-Mar
Achrafieh	M	M	M	Ain el-Mreisse	ML	ML	ML	Bachoura	M	M	M
Beirut Central Distr	VL	VL	VL	Marfai	L	L	L	Mazraa	M	M	M
Medaouar	M	M	M	Minet el-Hosn	L	L	L	Mwssaitbeh	M	M	M
Ras Beirut	ML	ML	ML	Rmeil	M	M	M	Saifi	L	L	L
Zqaq el-Blat	L	L	L								