

Lebanon Fire Risk Bulletin



CIVIL DEDEFENCE

Refer to cadast table condition.

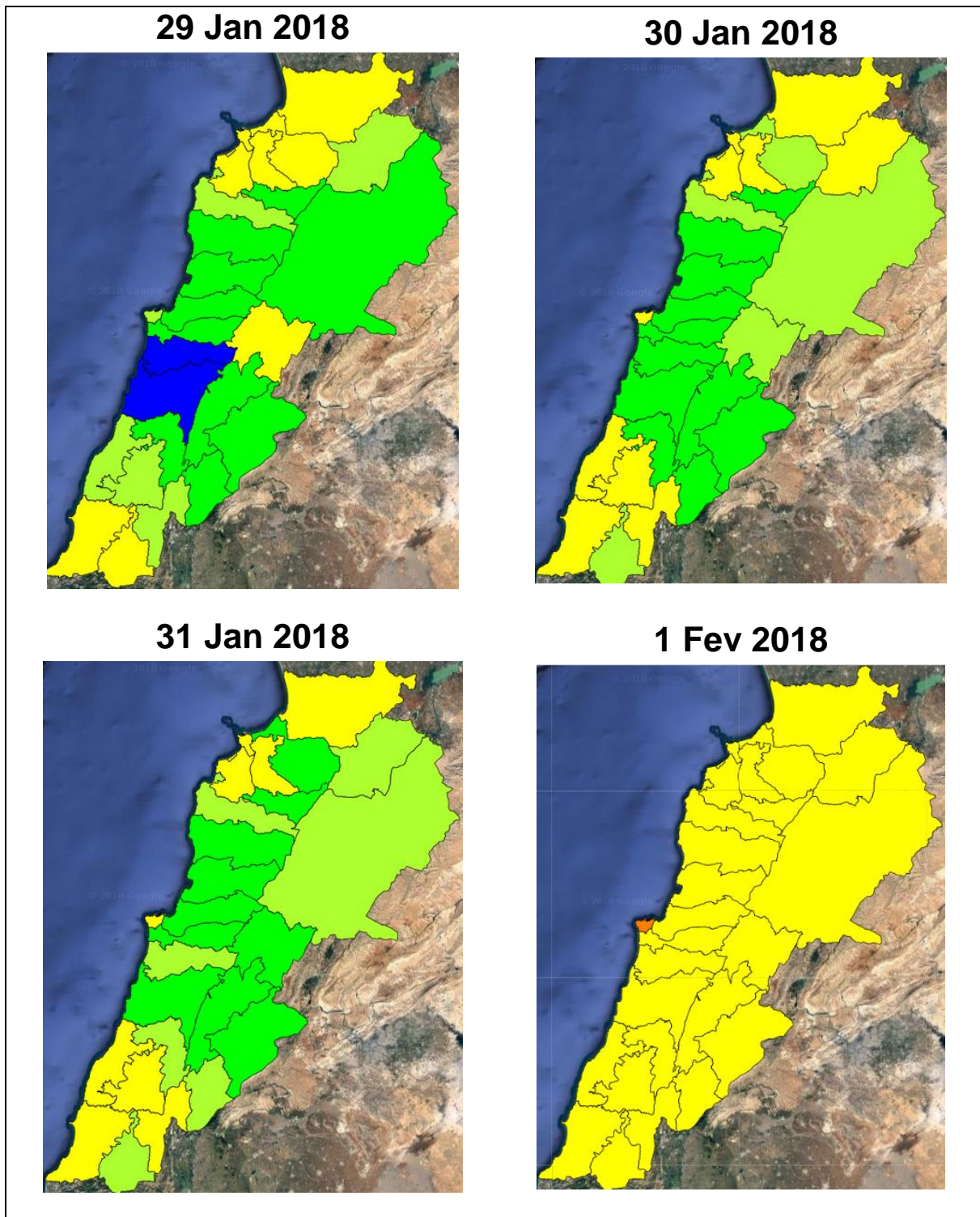
Please note that the indicated temperature is at 2 meters height from the ground.

General description of potential fire risk situation

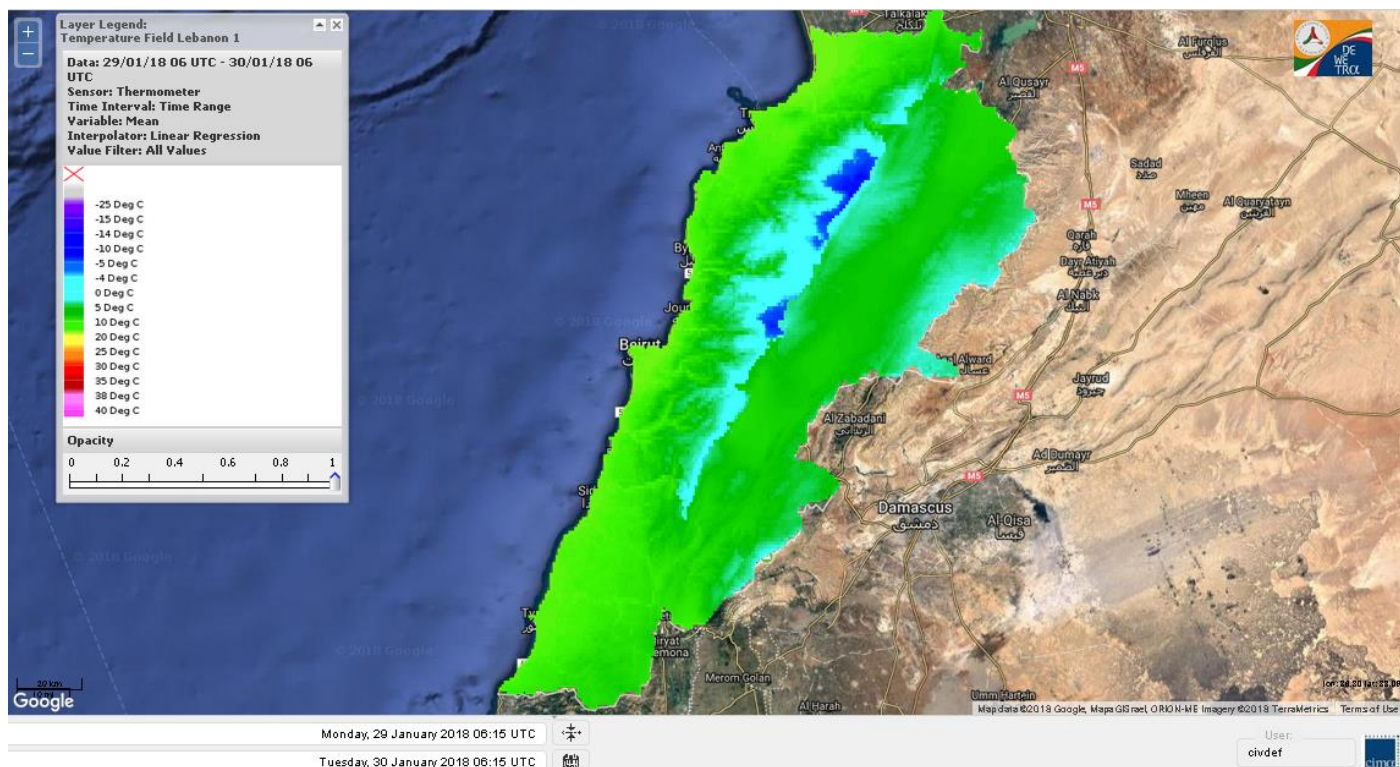
Symbol	Level of risk	Meaning and actions
VL	Very low	Very low fire risk. Controlled burning operations can be hardly executed due to high fuel moisture content. Normally wildfires self-extinguish.
L	Low	Low fire risk. Controlled burning operations can be executed with a reasonable degree of safety.
ML	Medium low	Medium-low fire risk. Controlled burning operations can be executed in safety conditions. All the fires need to be extinguished.
M	Medium	Medium fire risk. Controlled burning operations would be avoided. All the fires need to be very well extinguished.
M	Medium high	Controlled burning is not recommended. Open flame will start fires. Cured grasslands and forest litter will burn readily. Spread is moderate in forests and fast in exposed areas. Patrolling and monitoring is suggested. Fight fires with direct attack and all available resources.
H	High	Ignition can occur easily with fast spread in grass, shrubs and forests. Fires will be very hot with crowning and short to medium spotting. Direct attack on the head may not be possible requiring indirect methods on flanks. Patrolling and monitoring the territory is highly suggested.
E	Extreme	Ignition can occur also from sparks. Fires will be extremely hot with fast rate of spread. Control may not be possible during day due to long range spotting and crowning. Suppression forces should limit efforts to limiting lateral spread. Damage potential total. Patrolling and monitoring the territory is highly suggested.

Beirut, 30 January 2018

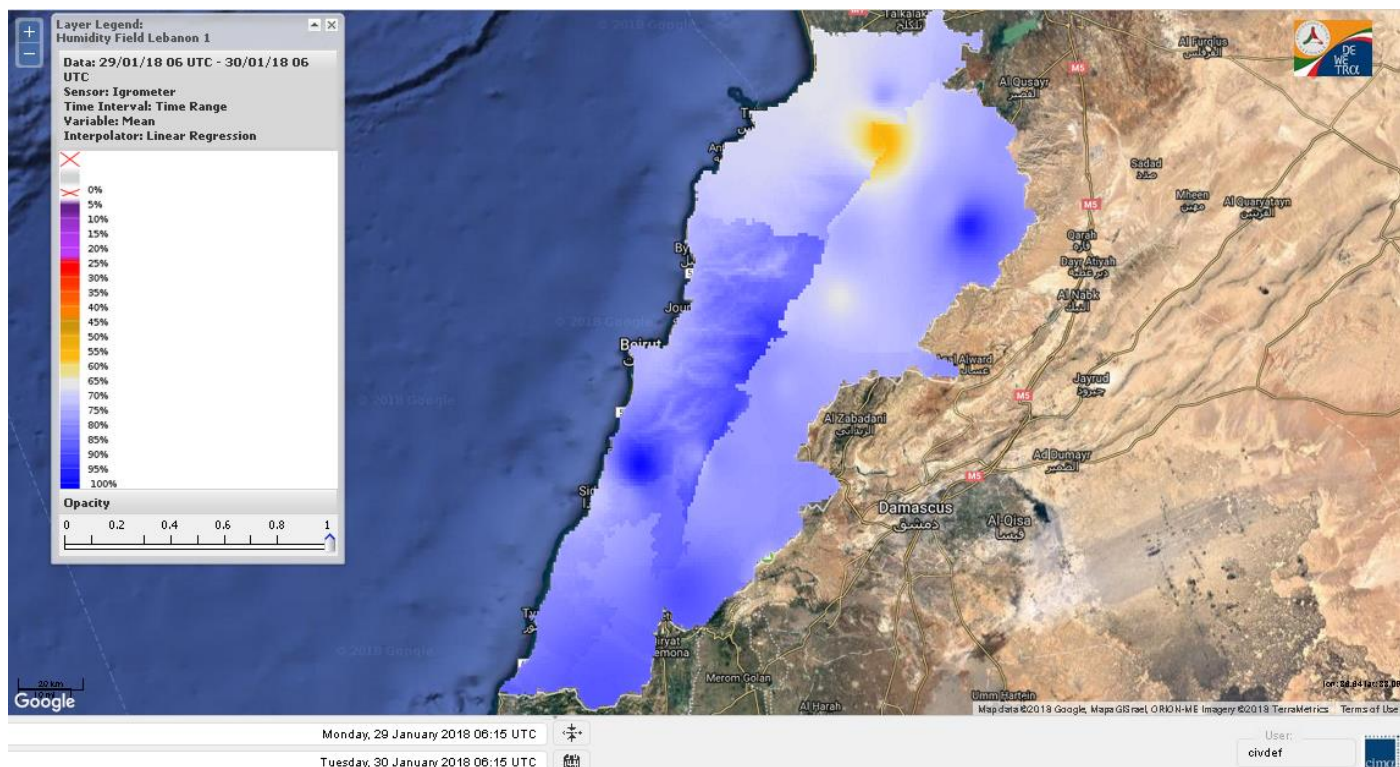
FIRE RISK INDEX



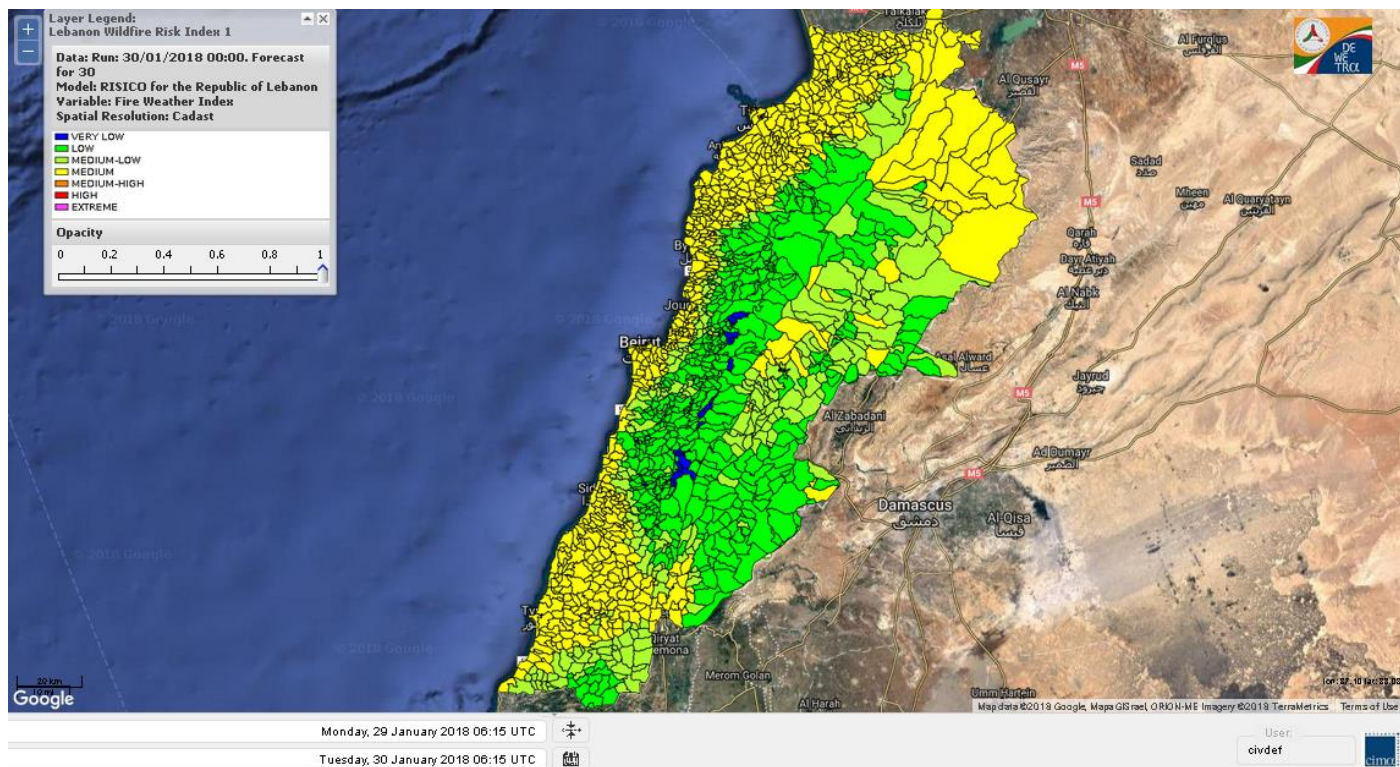
Lebanon temperature for Lebanon 30 Jan 2018



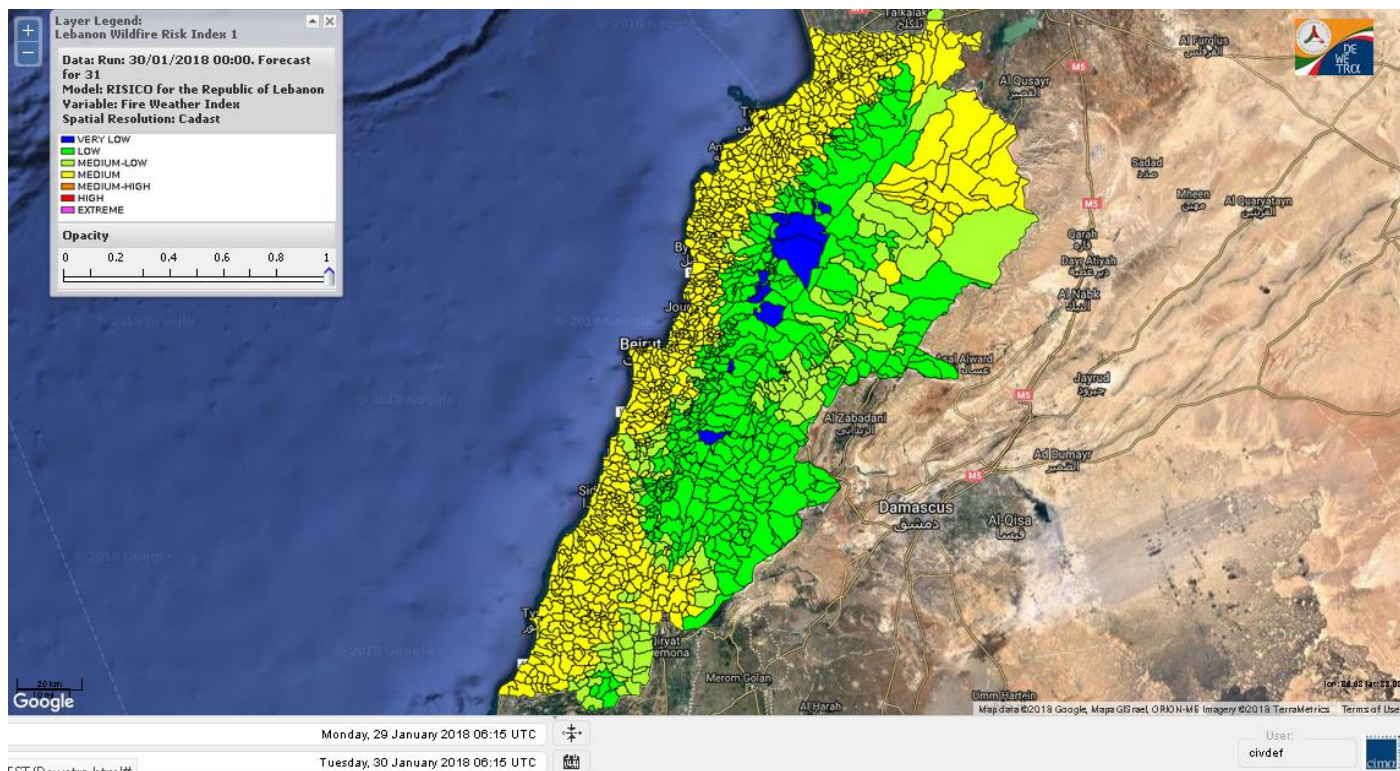
Lebanon humidity for Lebanon 30 Jan 2018



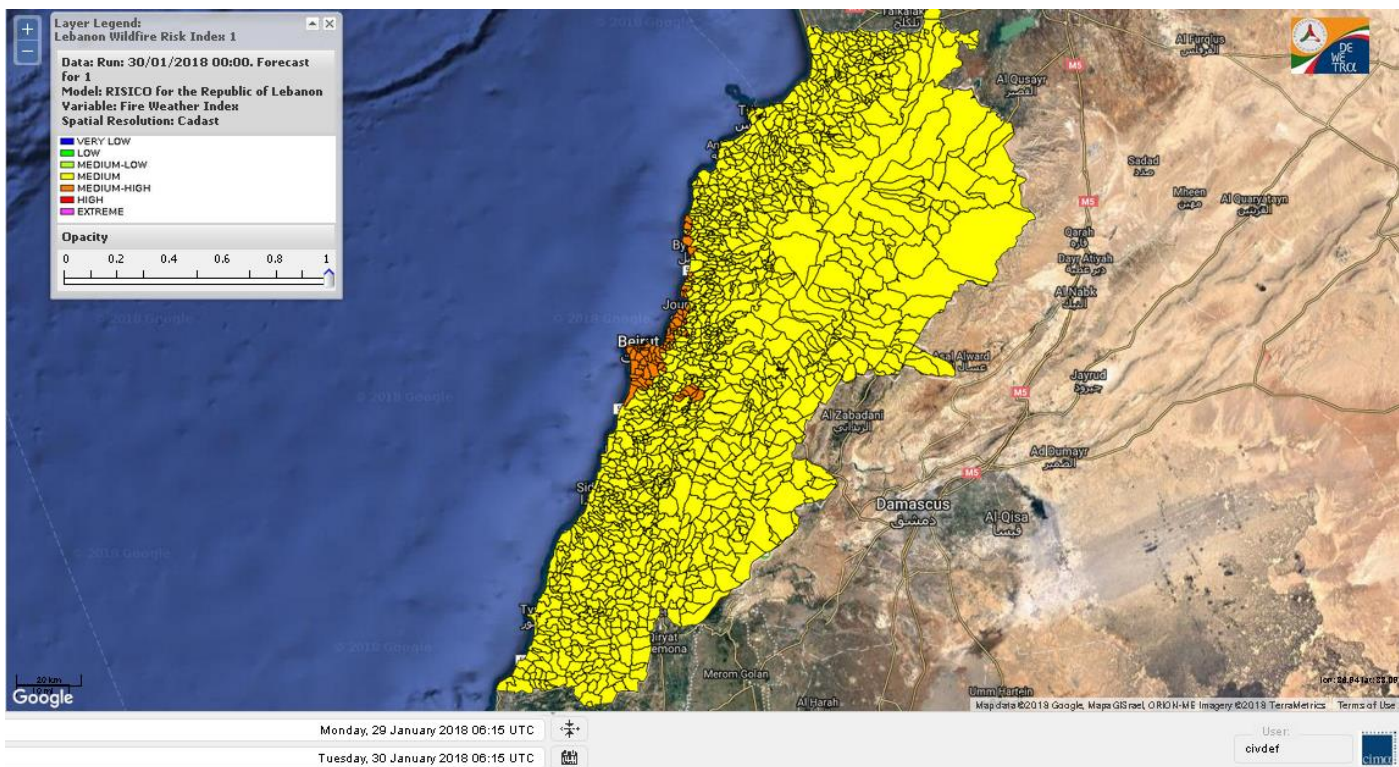
Lebanon for 30 Jan 2018



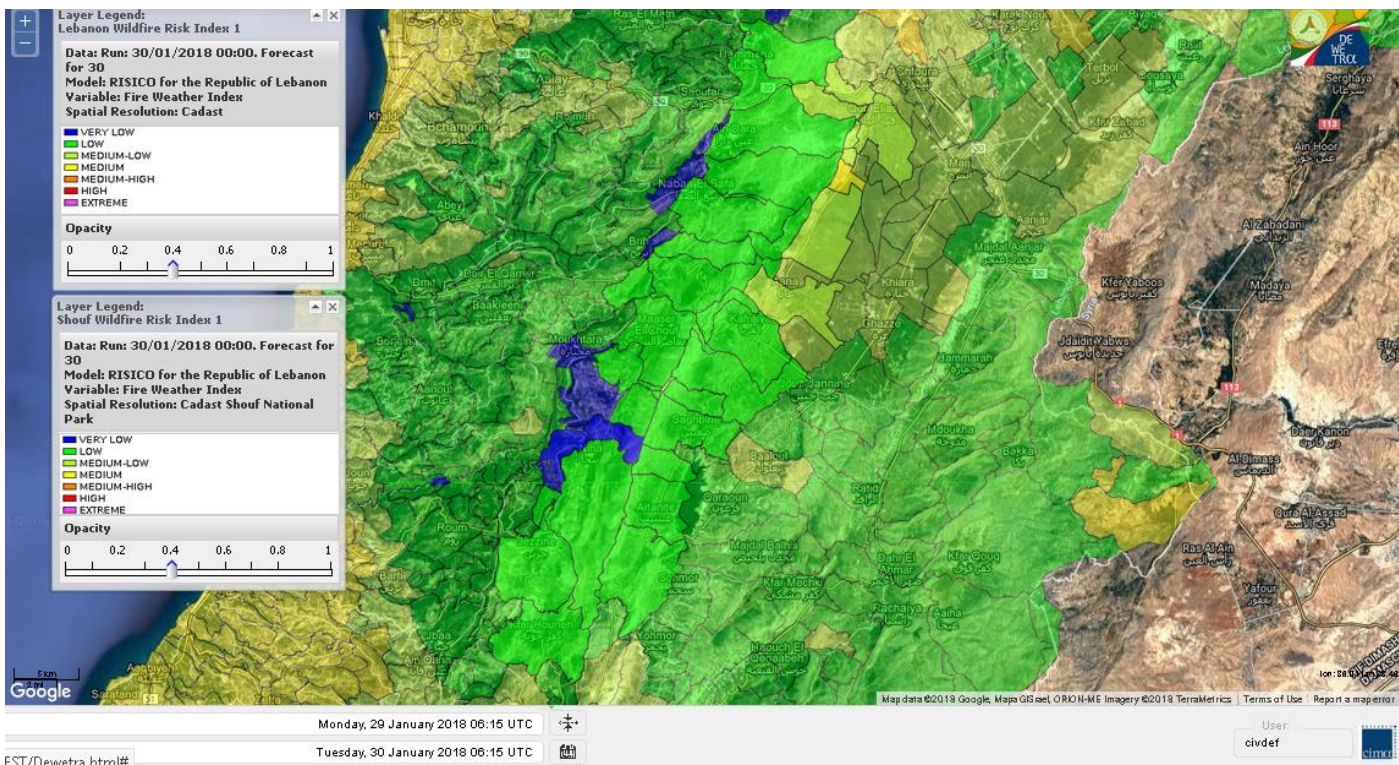
Lebanon for 31 Jan 2018



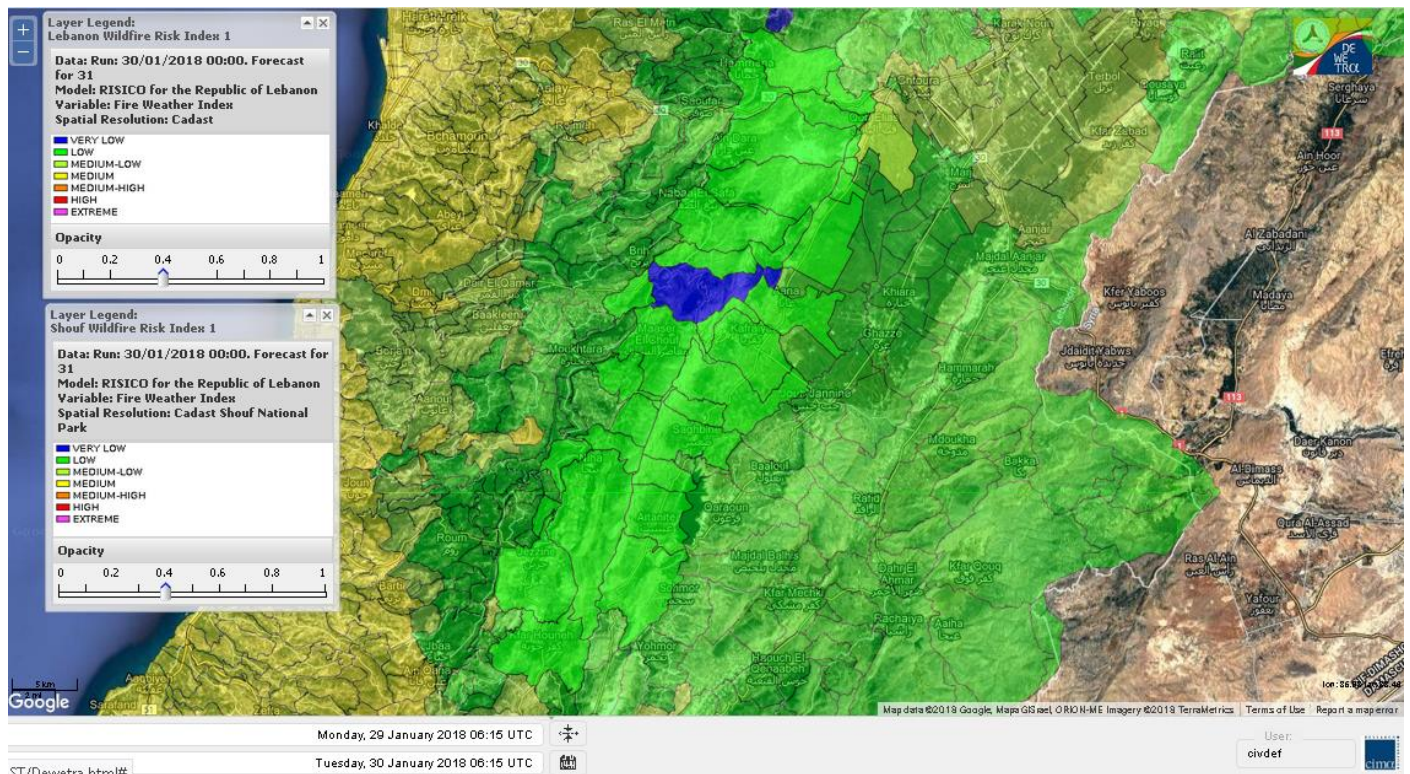
Lebanon for 1 Feb 2018



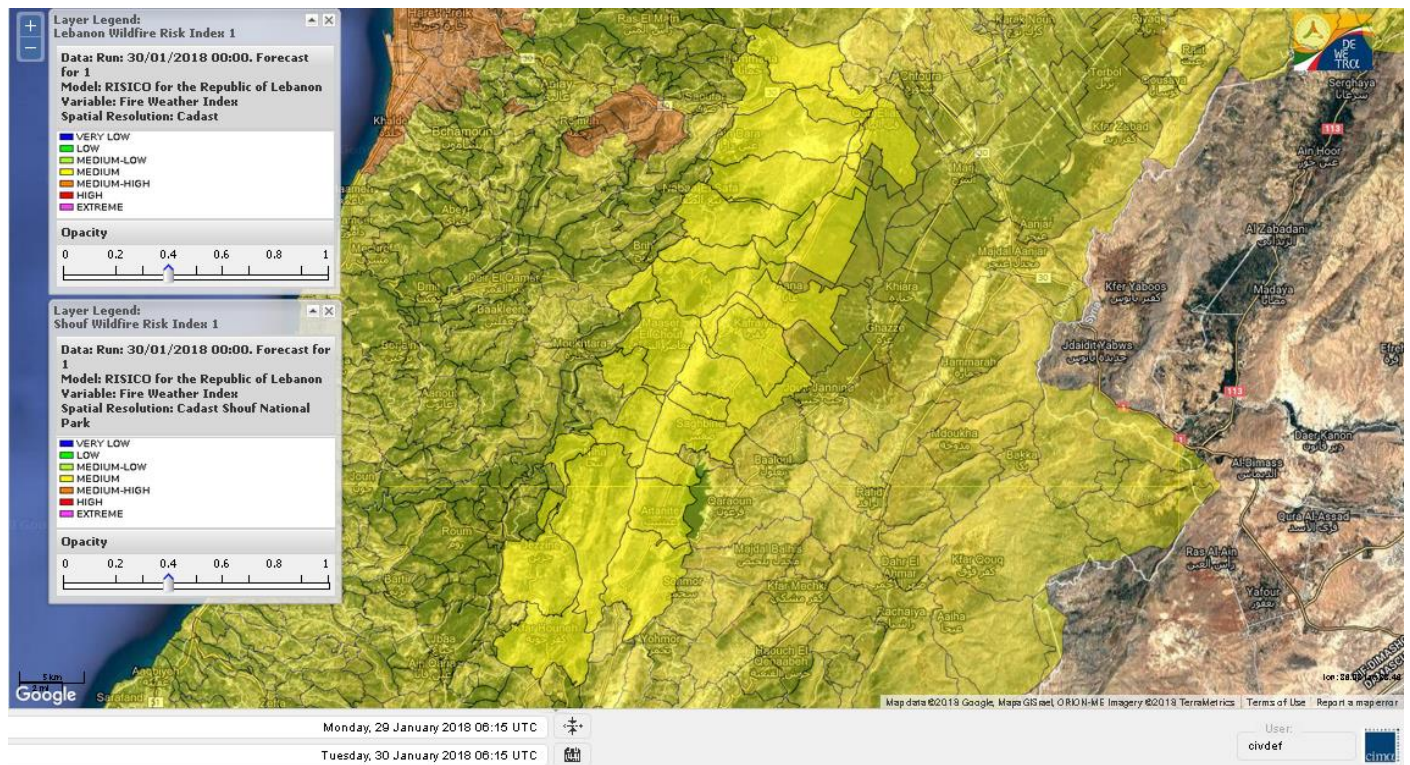
Shouf Biosphere Reserve Forecast for 30 Jan 2018



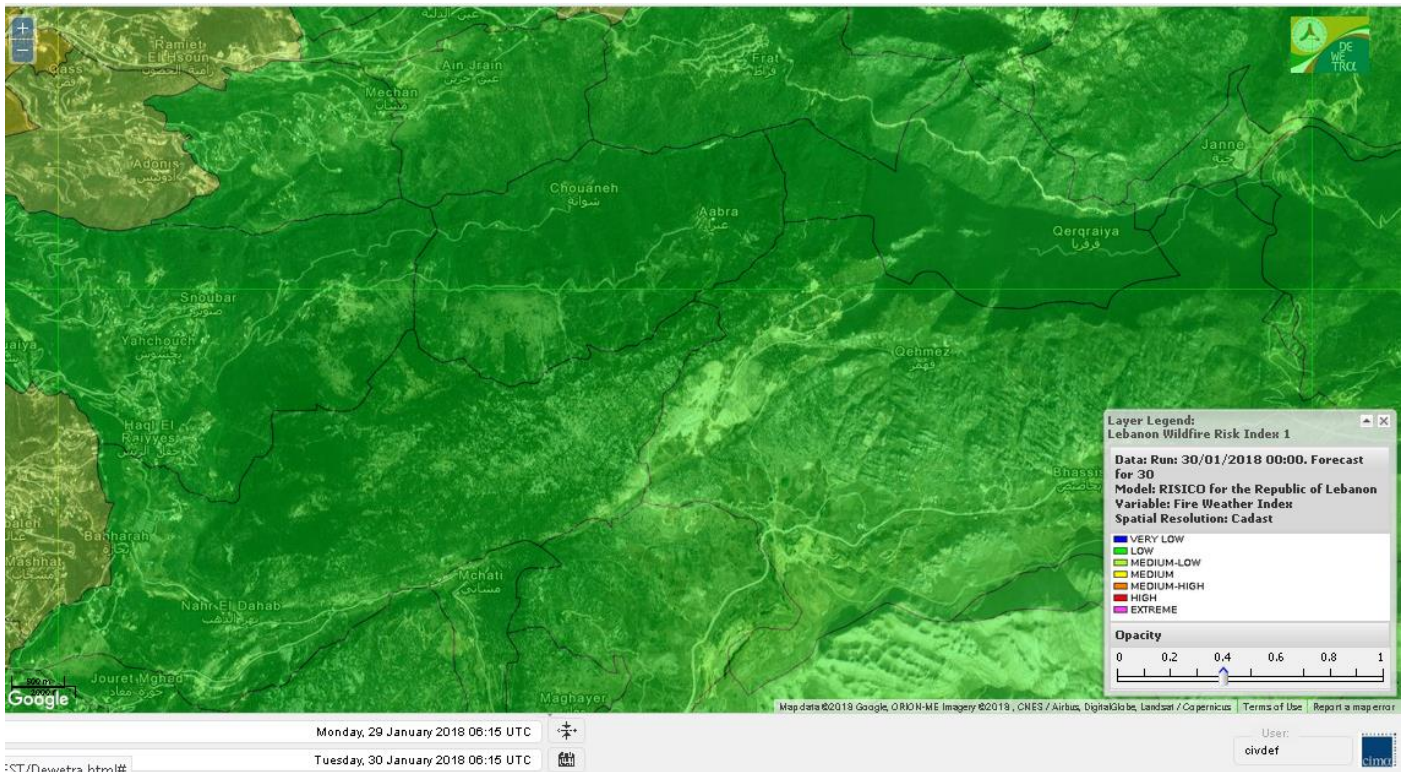
Shouf Biosphere Reserve Forecast for 31 Jan 2018



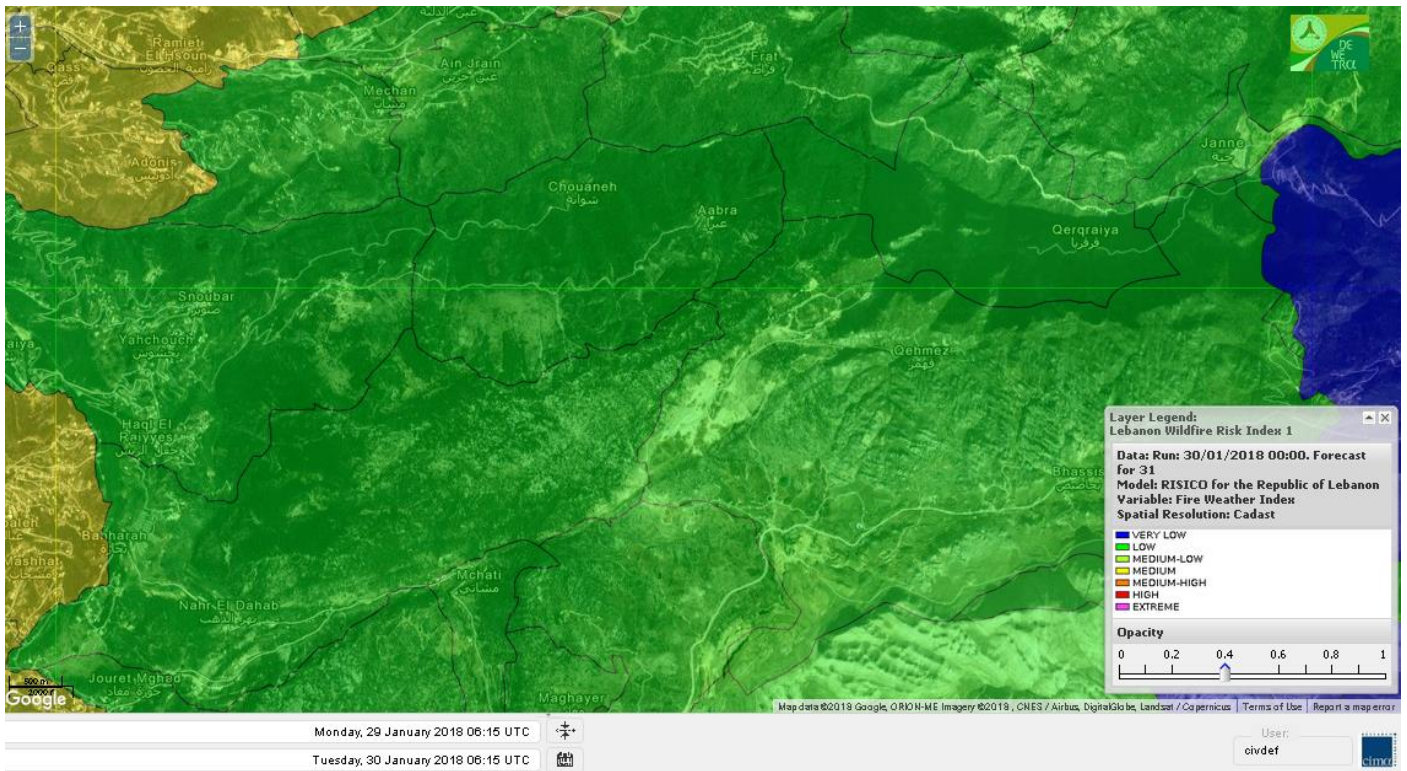
Shouf Biosphere Reserve Forecast for 1 Feb 2018



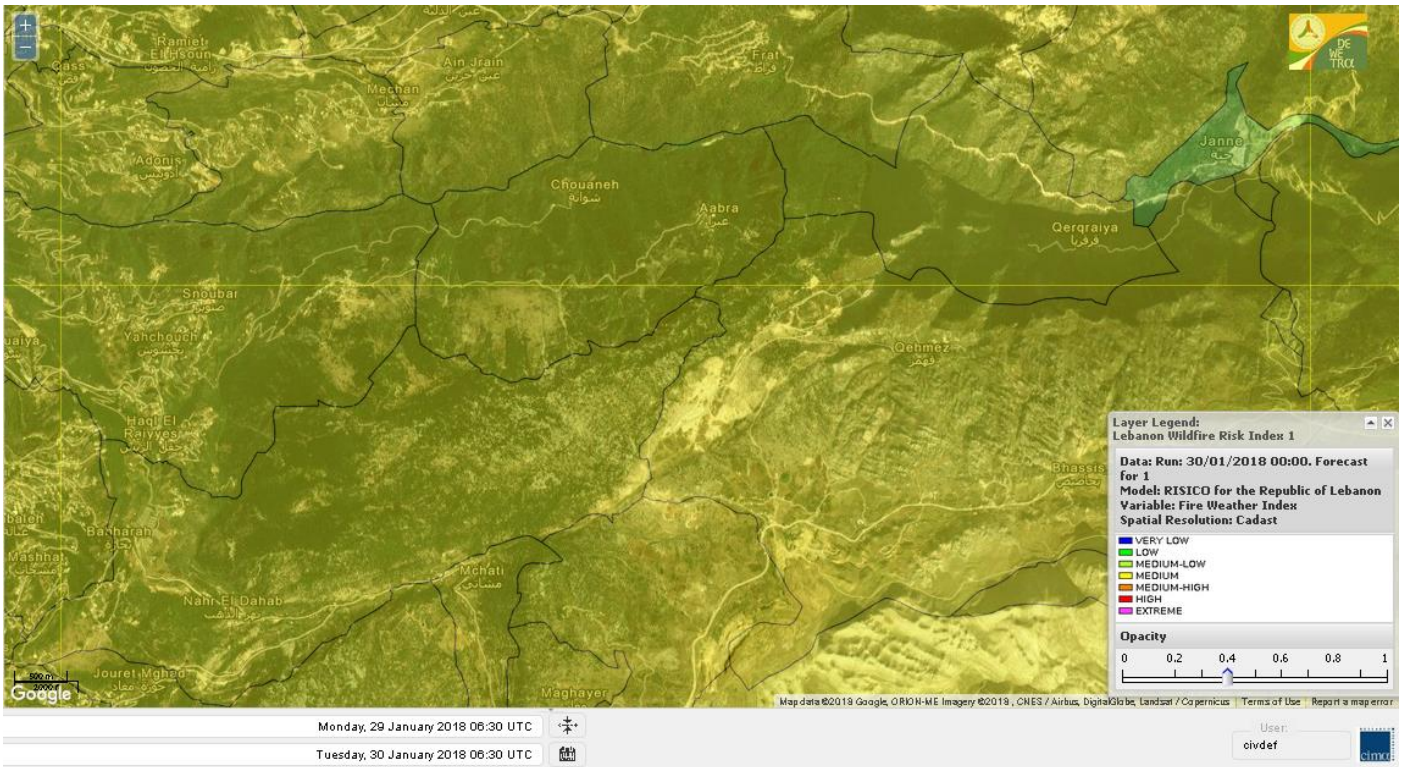
Jabal Moussa Reserve Forecast for 30 Jan 2018



Jabal Moussa Reserve Forecast for 31 Jan 2018



Jabal Moussa Reserve Forecast for 1 Feb 2018



Nord

Koura

Municipality	30-Jan	31-Jan	01-Feb	Municipality	30-Jan	31-Jan	01-Feb	Municipality	30-Jan	31-Jan	01-Feb
Aaba	M	M	M	Afsaddiq	M	M	M	Ain Ekrine	M	M	M
Amioun	M	M	M	Anfeh	M	M	M	Badbhoun	M	M	M
Barghoun	M	M	M	Barsa	M	M	M	Batroumine	M	M	M
Bdebba	M	M	M	Bechmizzine	M	M	M	Bednayel El-Koura	M	M	M
Bhabbouch El-Koura	M	M	M	Bkeftine	M	M	M	Bnehran	M	M	M
Bqaiiaa El-Koura	M	M	M	Bsarma	M	M	M	Btaaboura	M	M	M
Bttram	M	M	M	Btouratij	M	M	M	Bziza	M	M	M
Dar Beechtar	M	M	M	Dar Chmezzine	M	M	M	Deddeh	M	M	M
Deir El-Balamand	M	M	M	Fih	M	M	M	Hraiche	M	M	M
Ijdaabrine	M	M	M	Kaftoun	M	M	M	Kefraya El-Koura	M	M	M
Kfarakka	M	M	M	Kfarhata	M	M	M	Kfarhazir	M	M	M
Kfarkahel	M	M	M	Kfarsaroun	M	M	M	Kosba	M	M	M
Mejdel el-Koura	M	M	M	Nakhle	M	M	M	Qalhat	M	M	M
Ras Masqa	M	M	M	Rechdibbine	M	M	M	Zakroun	M	M	M
Zgharta El-Mtaouile	M	M	M								

Bcharre

Municipality	30-Jan	31-Jan	01-Feb	Municipality	30-Jan	31-Jan	01-Feb	Municipality	30-Jan	31-Jan	01-Feb
Aabdine	M	ML	M	Bane	L	L	M	Barhelioun	M	M	M
Bazouone	VL	VL	M	Becharre	L	L	M	Beit Menzer	L	L	M
Billa	L	L	M	Blaouza	L	L	M	Bqaa Kafra	L	VL	M
Bqerqacha	L	L	M	Breissat	L	L	M	Dimane	L	L	M
Hadath El Jobbeh	L	L	M	Hadchit	L	L	M	Hasroun	L	L	M
Mazraat Aassaf	M	M	M	Mazraat Bani Saab	ML	ML	M	Mchaa El-Jobbeh	L	L	M
Metrit	M	M	M	Moghr El-Ahoual	M	M	M	Ouadi Qannoubine	L	L	M
Qanat	L	L	M	Qnayer	L	L	M	Tourza	ML	ML	M

Batroun

Municipality	30-Jan	31-Jan	01-Feb	Municipality	30-Jan	31-Jan	01-Feb	Municipality	30-Jan	31-Jan	01-Feb
Aabrine	M	M	M	Aalali	M	M	M	Aartiz	M	M	M
Abdelli	M	M	M	Ajdabra	M	M	M	Assia	M	M	M
Basbina	M	M	M	Batroun	M	M	M	Bcheleh	ML	L	M
Bechtoudar	M	M	M	Beit Chlala	M	ML	M	Beit Kassab	M	M	M
Bijdarfil	M	M	M	Bqesmaya	M	M	M	Chatine	L	L	M
Chebtin	M	M	M	Chekka	M	M	M	Daael	M	M	M
Dahr Abi Yaghi	M	M	M	Daraya El-Batroun	M	M	M	Deir Billa	M	M	M
Deir Kfifane	M	M	M	Deir Mar Youhanna EL	M	ML	M	Deir Mar Youssef Jra	M	M	M
Douma	L	L	M	Douq	M	M	M	Eddeh El-Batroun	M	M	M
Ftahat El-Batroun	M	M	M	Ghouma	M	M	M	Hadtoun	ML	M	M
Hamat	M	M	M	Harbouna	M	M	M	Hardine	M	M	M
Helta	M	M	M	Hery	M	M	M	Jebbla	M	M	M
Jrabta El-Batroun	M	M	M	Jrane El-Batroun	M	M	M	Kfar Aabida	M	M	M
Kfar Halda	M	M	M	Kfarb Shlaimane	M	M	M	Kfarhatna	M	M	M
Kfarhay	M	M	M	Kfarhelos	M	M	M	Kfifane	M	M	M

Kfour El Arabi	ML	ML	M	Koubba	M	M	M	Kour	M	M	M
Mar Mama	M	M	M	Masrah	M	M	M	Mehmarch	M	M	M
Mrah Chdid	M	M	M	Mrah El Ziyat	M	M	M	Mrah El-Hajj	M	M	M
Nahle El-Batroun	M	M	M	Niha El-Batroun	L	L	M	Oujah El-Hajjar	M	M	M
Ouata Houb	L	VL	M	Qatnaaoun	M	M	M	Racha	M	M	M
Rachana	M	M	M	Rachkida	M	M	M	Ram El-Batroun	L	M	M
Ras Nahhach	M	M	M	Selaata	M	M	M	Sghar	M	M	M
Smar Jbayl	M	M	M	Sourat El-Batroun	M	M	M	Tannourine El-Faouqa	L	VL	M
Tannourine Et-Tahta	L	VL	M	Thoum	M	M	M	Toula El-Batroun	M	M	M
Zan	M	M	M								

Zgharta

Municipality	30-Jan	31-Jan	01-Feb	Municipality	30-Jan	31-Jan	01-Feb	Municipality	30-Jan	31-Jan	01-Feb
Aachach	M	M	M	Aalma	M	M	M	Aarde	M	M	M
Aintourine	M	M	M	Arabet Qozhaya	ML	ML	M	Arde	M	M	M
Arjis	M	M	M	Asnoun	M	M	M	Ayto	M	M	M
Basloukit	L	L	M	Bchannine	M	M	M	Besebeel	M	M	M
Bhairret Toula	ML	L	M	Bnachee	M	M	M	Boussit	M	M	M
Danha	M	M	M	Daraiya Zgharta	M	M	M	Deir Jdeide	M	M	M
Ehden	L	L	M	Halan	M	M	M	Hariq Zgharta	M	M	M
Houakir	M	M	M	Hraiqis	M	M	M	laal	M	M	M
Ijbaa	M	M	M	Karm Saddeh	M	M	M	Kfarchakhna	M	M	M
Kfardlaqous	M	M	M	Kfarfou	M	M	M	Kfarhata Zgharta	M	M	M
Kfarhoura	M	M	M	Kfarsghab	L	L	M	Kfaryachit	M	M	M
Kfarzaina	M	M	M	Khaldiye	M	M	M	Mazraat Ajbeaa	M	M	M
Mazraat Et-Teffah	M	M	M	Mazraat Jneid	M	M	M	Mejdlaiya Zgharta	M	M	M
Merh Kfarsghab	M	M	M	Miryata	M	M	M	Miziara	M	M	M
Mzraat Kefraya	M	M	M	Qorah Bach	M	M	M	Rachiine	M	M	M
Ras Kifa	M	M	M	Sakhra	M	M	M	Sebhel Zgharta	M	M	M
Serhel	M	M	M	Tallet Zgharta	M	M	M	Toula Zgharta	M	L	M
Zgharta	M	M	M								

Minieh-Denniye

Municipality	30-Jan	31-Jan	01-Feb	Municipality	30-Jan	31-Jan	01-Feb	Municipality	30-Jan	31-Jan	01-Feb
Aasaymout	M	M	M	Aaymar	M	M	M	Aazki	M	M	M
Ain El-Tineh-Miniyeh	ML	VL	M	Assoun	M	M	M	Bakhaaoun	M	M	M
Bchennata	L	L	M	Bechehhara	M	M	M	Beddawi	M	M	M
Behouaita	M	L	M	Beit El Foqss	ML	VL	M	Beit Haouik	M	M	M
Beit Zoud	M	M	M	Bekaasafrine	L	L	M	Borj El Yahoudiyeh	M	M	M
Bqarsouna	ML	L	M	Btermaz	M	M	M	Debaael	M	M	M
Deir Ammar	M	M	M	Deir Nbouh	M	M	M	Haouaret-Miniyeh	M	M	M
Haql el Azimeh	M	M	M	Harf El Siyad	M	M	M	Hazmiye-Miniyeh	M	L	M
Izal	M	M	M	Jarjour	M	M	M	Jayroun	M	L	M
Kahf El-Malloul	M	M	M	Karm El-Moher	M	M	M	Kfar Binine	M	L	M
Kfarchalane	M	M	M	Kfarhabou	M	M	M	Kharroub-Miniyeh	M	M	M
Mazraat El-Kreme	M	M	M	Mazraat Ketrane	M	M	M	Merkebta	M	M	M
Minyeh	M	M	M	Mrah El Sfirat	M	ML	M	Mrah Sraj	M	M	M
Mrebbine	ML	L	M	Nabi Youcheaa	M	M	M	Nemrine	ML	L	M

Qarhaiya	M	M	M	Qarne	M	L	M	Qarsita	ML	L	M
Qattineh-Miniyeh	M	M	M	Qemmamine	M	L	M	Qraine	M	M	M
Raouda-Aadoua	M	M	M	Rihaniyet-Miniyeh	M	M	M	Sfireh	M	L	M
Sir Ed-Danniyeh	M	M	M	Tarane	M	M	M	Terbol-Miniyeh	M	M	M
Zaghartaghriane	M	M	M	Zouq Bhannine	M	M	M				

Nabatiye

Nabatiye

Municipality	30-Jan	31-Jan	01-Feb	Municipality	30-Jan	31-Jan	01-Feb	Municipality	30-Jan	31-Jan	01-Feb
Aabba	M	M	M	Aazzi	M	M	M	Adchit El-Chqif	M	M	M
Ain Bou Swar	L	ML	M	Ain Kana	ML	M	M	Ali El-TaHER	ML	M	M
Ansar	M	M	M	Arab Salim	ML	M	M	Arnoun	M	M	M
Bfaroue	M	M	M	Breyqaah	M	M	M	Charqiyeh	M	M	M
Choukine	M	M	M	Deir El Zahrani	M	M	M	Doueir El-Nabatiyeh	M	M	M
Habbouch El-Nabatiye	M	M	M	Hamra El-Nabatiyeh	M	ML	M	Harouf El-Nabatiyeh	M	M	M
Hmaile	ML	M	M	Houmin El Faouqa	ML	M	M	Houmin El Tahta	M	M	M
Jarjough	ML	ML	M	Jbaah El-Nabatiyeh	L	L	M	Jebchit	M	M	M
Kfar Djal El-Nabatiy	M	M	M	Kfar Remmane	ML	M	M	Kfar Sir	M	M	M
Kfar Tebnit	M	M	M	Kfarfila	ML	M	M	Kfour El-Nabatieh	M	M	M
Mayfadoun	M	M	M	Mazraat Bsaffour	M	M	M	Mazraat Chalbaal	M	M	M
Mazraat Dmoul	M	M	M	Mazraat El Khreibeh	M	M	M	Mazraat El-Bayad El-	M	M	M
Mazraat Kfarjaouz	M	M	M	Mazraat Qalaat Meiss	M	M	M	Nabatiyeh El-Fawka	M	M	M
Nabatiyeh Et-Tahta	M	M	M	Namiriyyeh	M	M	M	Qaqaaiyyet El Jisr	M	M	M
Qossaibeh El-Nabatiy	M	M	M	Roumine	M	M	M	Sarba El-Nabatieh	M	M	M
Sir El-Gharbiyeh	M	M	M	Toul	M	M	M	Yehmor El-Nabatiyeh	M	M	M
Zaoutar El Charkiyeh	M	ML	M	Zaoutar El-Gharbiyeh	M	ML	M	Zebdine El-Nabatiyeh	M	M	M
Zefta	M	M	M								

Hasbaiya

Municipality	30-Jan	31-Jan	01-Feb	Municipality	30-Jan	31-Jan	01-Feb	Municipality	30-Jan	31-Jan	01-Feb
Ain Jarfa	L	ML	M	Abou Qamha	ML	M	M	Ain Qania	L	ML	M
Bourghos	ML	ML	M	Chebaa	L	L	M	Chouaya Hasbaya	L	L	M
Dellafeh	ML	ML	M	Fardiss Hasbaiya	ML	M	M	Hasbaya	L	ML	M
Hbariyeh	L	ML	M	Kaoukaba Hasbaiya	M	M	M	Kfar Chouba	L	ML	M
Kfar Hamam	L	ML	M	Kfeir El-Zait	L	L	M	Khalwat Hasbaya	L	L	M
Khreibet Hasbaiya	M	M	M	Majidiyeh Hasbaiya	ML	M	M	Marj Ez-Zhour (Haouc	L	L	M
Meri	M	M	M	Mimass	L	L	M	Rachaiya El-Fokhar	ML	M	M
Salaiyeb	M	M	M								

Marjayoun

Municipality	30-Jan	31-Jan	01-Feb	Municipality	30-Jan	31-Jan	01-Feb	Municipality	30-Jan	31-Jan	01-Feb
Aalmane Marjaayoun	M	M	M	Aamra	M	M	M	Adayseh Marjaayoun	M	ML	M
Adchit El-Koussair	M	ML	M	Ain Arab Marjaayoun	M	M	M	Bani Haiyann	ML	ML	M
Blatt Marjaayoun	M	M	M	Blida	ML	ML	M	Borj El-Moulouk	M	M	M
Boueyda Marjaayoun	ML	M	M	Deir Mimass	M	M	M	Deir Siriane	M	M	M
Dibbine	M	M	M	Ebel El Saqi	M	M	M	Houla	ML	ML	M
Houra	M	M	M	Kfar Kila	M	M	M	Khiam Marjaayoun	M	M	M

Klayaa	ML	M	M	Majdel Selem	ML	ML	M	Marjaayoun	M	M	M
Markaba	ML	ML	M	Mays El-Jabal	ML	ML	M	Mazraat Doumiat	M	M	M
Mazraat Sarada	M	M	M	Mhaibib	ML	ML	M	Qabrikha	ML	ML	M
Qantara	M	ML	M	Rab El-Thalathine	ML	ML	M	Saouaneh Marjayoun	M	ML	M
Talloussa	ML	ML	M	Taybeh Matjaayoun	M	M	M	Touline	M	M	M

Bent Jbail

Municipality	30-Jan	31-Jan	01-Feb	Municipality	30-Jan	31-Jan	01-Feb	Municipality	30-Jan	31-Jan	01-Feb
Ain-Ebel	L	L	M	Aitaroun	ML	ML	M	Aynata Bint Jbeil	ML	ML	M
Ayta El-Chaeb	L	ML	M	Ayta El-Jabal	ML	ML	M	Beit Lif	ML	M	M
Beit Yahoun	ML	ML	M	Bint Jbeil	L	L	M	Borj Qalaway	M	M	M
Braachit	ML	ML	M	Chakra	ML	ML	M	Debel	L	ML	M
Deir Antar	M	M	M	Froun	M	M	M	Ghandouriyeh Bint Jb	M	M	M
Hanine	L	L	M	Hariss	ML	M	M	Hdatha	L	ML	M
Jmeyjmech	ML	ML	M	Kafra Bint Jbeil	ML	M	M	Kfar Dounine	M	M	M
Khirbet Selm	M	M	M	Kounine	ML	ML	M	Maroun El Ras	ML	ML	M
Qalaway	M	M	M	Qaouzah	L	ML	M	Qatmoun	L	L	M
Ramya Bint Jbeil	L	ML	M	Rchaf	L	ML	M	Rmeich	L	ML	M
Safad Al Battikh	ML	ML	M	Salhaneh	L	ML	M	Serbine	ML	M	M
Sultanieh Bint Jbeil	ML	ML	M	Tibnine	ML	ML	M	Tiri	L	L	M
Yaroun	L	L	M	Yater	ML	M	M				

Mont Liban

Jbail

Municipality	30-Jan	31-Jan	01-Feb	Municipality	30-Jan	31-Jan	01-Feb	Municipality	30-Jan	31-Jan	01-Feb
Aabeydat	ML	M	M	Aalita	M	M	M	Aamchit	M	M	MH
Aarab El-Lahib	VL	VL	M	Aarasta	L	VL	M	Adonis Jbeil	ML	M	M
Afqa Jbeil	VL	VL	M	Ain El Delbeh Jbeil	L	L	M	Ain El-Ghouayba	L	VL	M
Ain Jrain	L	L	M	Ain Kfah	M	M	M	Almat El Chemaliyat	L	M	M
Almat El-Jenoubiya	L	L	M	Aqoura	L	VL	M	Bayzoun	L	M	M
Bchille Jbeil	M	M	M	Bechtida	ML	M	M	Behdaydat	M	M	M
Beit Habbaq	M	M	M	Bejjeh	M	M	M	Bekhaaz	M	M	M
Berbara Jbeil	M	M	MH	Bintael	M	M	M	Birket Hjoula	ML	M	M
Blatt Jbeil	M	M	M	Boulhos	L	L	M	Breyj Jbeil	ML	M	M
Chamat	M	M	M	Chikhane	M	M	M	Chmout	M	M	M
Eddeh Jbeil	M	M	M	Ehmej	L	L	M	Fatre	M	M	M
Ferhet	ML	M	M	Fghal	M	M	M	Frat	L	L	M
Ghabat	L	VL	M	Ghalboun	M	M	M	Gharzouz	M	M	M
Ghofrine	M	M	M	Habil	L	M	M	Halate	M	M	M
Haqel	L	M	M	Hbaline	M	M	M	Hboub	M	M	M
Hdeine	L	VL	M	Hema Er-Rehban	VL	VL	M	Hema Mar Maroun Aann	VL	VL	M
Hjoula	L	ML	M	Hosrayel	M	M	M	Hsarat	M	M	M
Hsoun	ML	M	M	Jaj	L	L	M	Janne	VL	VL	ML
Jbeil	M	M	MH	Jeddeyel Jbeil	M	M	MH	Jlisse	M	M	M
Jouret El-Qattine	ML	M	M	Kfar Baal Annaya	L	M	M	Kfar Kidde	M	M	M
Kfar Kouas	ML	M	M	Kfar Mashoun	M	M	M	Kfoun	M	M	M

Kharbe Jbeil	M	M	M	Laqlouq	VL	VL	M	Lassa	L	VL	M
Lehfed	L	M	M	Maad	M	M	M	Mar Sarkis	L	VL	M
Mastita	M	M	M	Mayfouq	ML	M	M	Mazraat El Siyad	VL	VL	M
Mazraat El-Maaden	L	M	M	Mechane	L	L	M	Mechmech Jbeil	L	ML	M
Mehrin	M	M	M	Mejdel El-Akoura	L	VL	M	Mghayreh Jbeil	L	VL	M
Mounsef	M	M	MH	Nahr Ibrahim	M	M	MH	Qahmez	L	L	M
Qartaba	L	VL	M	Qartaboun	M	M	MH	Qattara Jbeil	L	M	M
Qorqraya	L	L	M	Ramout	M	M	M	Ras Osta	ML	M	M
Rihane Jbeil	M	M	M	Sakiet El-Khayt	M	M	M	Saqi Richmaya	L	ML	M
Sebrine	M	M	M	Seraita	L	VL	M	Souane Jbeil	ML	ML	M
Tadmor	VL	VL	M	Tartej	L	L	M	Torzaiya	L	M	M
Yanouh Jbeil	L	VL	M	Zibidine Jbeil	M	M	M				

El Metn

Municipality	30-Jan	31-Jan	01-Feb	Municipality	30-Jan	31-Jan	01-Feb	Municipality	30-Jan	31-Jan	01-Feb
Aain El-Qabu	VL	L	M	Aain El-Qach	L	M	M	Aain El-Teffaha	L	M	M
Aain el-Safssaf El-M	L	ML	M	Abou Mizane	L	M	M	Ain Aar	M	M	MH
Ain Alaq	ML	M	M	Ain El-Kharroube	ML	M	M	Ain El-Sendiane	L	L	M
Ain El-Zeitoune	L	L	M	Ain Saadeh	ML	M	M	Aintoura El-Matn	L	L	M
Amaret Chalhoub	M	M	MH	Antelias	M	M	MH	Atchaneh	ML	M	M
Ayroun	L	ML	M	Baabdat	L	L	M	Baouchariyeh	M	M	MH
Baskinta	L	L	M	Beit Chabab	ML	M	M	Beit El-Chaar	M	M	MH
Beit El-Kekko	M	M	MH	Beit Mery	ML	M	M	Bhersaf	L	M	M
Bikfaya	L	M	M	Biyakout	M	M	MH	Bnabil	L	L	M
Bourj Hammoud	M	M	MH	Bqennaya	M	M	M	Broummana El-Matn	ML	M	M
Bsalim	M	M	M	Bsifrine	L	L	M	Bteghrine	VL	L	M
Chaouiye	ML	M	M	Chouaya El-Matn	ML	M	M	Choueir	L	ML	M
Chrine	L	M	M	Dahr El Sawan El-Mat	L	ML	M	Daychouniyeh	M	M	MH
Dbayeh	M	M	MH	Deir Chamra	L	ML	M	Deir Mar Abda el Mch	M	M	M
Deir Mar Roukouz	M	M	MH	Deir Tamiche	M	M	M	Dik El-Mehdi	M	M	M
Dikwaneh	M	M	MH	Douar El-Matn	L	L	M	Fanar	M	M	M
Fraike	M	M	M	Haret El-Ballaneh	M	M	MH	Hbous	M	M	MH
Himlaya	ML	M	M	Jal El Did	M	M	MH	Jdeideh El-Metn	M	M	MH
Jouar El-Matn	L	ML	M	Jouret El-Ballout	ML	M	M	Kaaqour	L	L	M
Kfar Aaqab	L	L	M	Kfertay El-Matn	VL	L	M	Khenchara	L	L	M
Khillet El-Mtain	L	L	M	Konnabat Broummana	ML	M	M	Konnabat Salima	L	L	M
Machraah El-Matn	VL	L	M	Majdel Tarchich	L	L	M	Majzoub	M	M	MH
Mansouriyeh El-Metn	M	M	MH	Mar Boutros Karm Et-	ML	M	M	Mar Chaya et Mzekke	ML	M	M
Mar Moussa Ed-Douar	L	L	M	Marjaba	VL	L	M	Masqa	L	M	M
Mayasse	ML	M	M	Mazraat Deir Aoukar	M	M	MH	Mazraat El-Hadirat	M	M	M
Mazraat Yachouh	M	M	MH	Mchikha	L	L	M	Menqlet Mezher	M	M	M
Mhaydseh Matn	L	M	M	Mkalles	M	M	MH	Mrouj	VL	L	M
Mtain	L	L	M	Mtayleb	M	M	M	Nabay	ML	M	M
Naccache	M	M	MH	Ouadi Chahine	L	M	M	Ouadi El-Karm El-Mat	VL	L	M
Ouata El-Mrouj	L	L	M	Ouyoun El-Matn	L	M	M	Qornet Chehwan	M	M	M
Qornet El-Hamra	M	M	M	Roumieh	ML	M	M	Sfeilet Bikfaya	L	M	M
Sinn El-Fil	M	M	MH	Zabbougha	L	L	M	Zalqa	M	M	MH

Zarouon	L	L	M	Zekrite	M	M	M	Zighrine El-Matn	L	M	M
Zouk El-Khrab	M	M	MH								

Chouf

Municipality	30-Jan	31-Jan	01-Feb	Municipality	30-Jan	31-Jan	01-Feb	Municipality	30-Jan	31-Jan	01-Feb
Aalmane El-Chouf	M	M	M	Aammq El-Chouf	L	L	M	Ain Ouzein	L	L	M
Ain Qani	VL	L	M	Ain Zhalta	L	L	M	Ainbal	L	L	M
Amatour	L	L	M	Anout	L	ML	M	Atrine	L	ML	M
Baadarane	VL	L	M	Baaqline	L	ML	M	Baasir	M	M	M
Barja	M	M	M	Barouk	L	VL	M	Bater	VL	L	M
Batloun	L	L	M	Bayqoun	ML	M	M	Bchetfine	L	ML	M
Beiteddine	L	L	M	Benouati Ech-Chouf	L	ML	M	Berjein	L	ML	M
Bireh et Mtalleh	L	L	M	Biret El-Chouf	L	L	M	Bkechtine Ouel Mchei	L	ML	M
Bkifa El-Chouf	L	ML	M	Botme	L	L	M	Bqaiaa Ech-Chouf	L	M	M
Bsaba El-Chouf	L	ML	M	Chammis El-Chouf	ML	M	M	Chehim	L	ML	M
Chemaarine	L	ML	M	Chourit	L	L	M	Daher El-Chouf	L	M	M
Dalhoun	L	M	M	Damour	M	M	M	Daraya El-Chouf	L	ML	M
Deir El-Moukhalles	L	ML	M	Deir Baba	L	ML	M	Deir Dourit	L	ML	M
Deir El-Qamar	L	ML	M	Deir Kouche	L	ML	M	Dibbieh	L	ML	M
Dmit	L	M	M	Fouara Jaafar	L	L	M	Fraidis El-Chouf	L	L	M
Ghabet Jaafar	L	ML	M	Gharife	L	L	M	Haret Jandal	VL	L	M
Hasrout	L	ML	M	Jadra	M	M	M	Jahlieh	L	ML	M
Jbeih El-Chouf	VL	L	M	Jdeidet El-Chouf	L	L	M	Jiyeh	M	M	M
Jleilyeh	L	ML	M	Jmailiyeh	ML	M	M	Joun	ML	M	M
Kahlounie El-Chouf	L	L	M	Ketermaya	ML	M	M	Kfar Faqoud	L	ML	M
Kfar Hamal	ML	M	M	Kfar Him	L	M	M	Kfar Katra	L	L	M
Kfar Niss	L	L	M	Kfar hay	L	L	M	Kfarnabrakh	L	L	M
Khirbet Bisri	L	L	M	Knayse El-Chouf	L	ML	M	Maaniyeh	ML	M	M
Maasser Beiteddine	L	L	M	Maasser El-Chouf	L	L	M	Majdalouna	ML	M	M
Majdel El-Meouch	L	L	M	Mazboud	ML	M	M	Mazmoura	L	M	M
Mazraat El Chouf	L	L	M	Mazraat El Daher	L	L	M	Mazraat El-Douair	L	L	M
Mechref	ML	M	M	Mghairie	ML	M	M	Mghayrie El-Chouf	L	M	M
Moukhtara	VL	L	M	Mrusti	L	L	M	Mtolle	L	M	M
Naameh	M	M	M	Niha El-Chouf	L	L	M	Ouadi Abou Youssef	VL	ML	M
Ouadi Ed-Deir	L	M	M	Ouadi El-Sit	L	L	M	Ouadi bnehlay	L	ML	M
Qraibeh	L	L	M	Qreiaa	L	L	M	Rmayle El-Chouf	M	M	M
Semqaniyeh	L	L	M	Sibline	M	M	M	Sirjbeil	L	M	M
Warhanieh	VL	L	M	Werdaniyeh	M	M	M	Zaarourieh	L	M	M

Baabda

Municipality	30-Jan	31-Jan	01-Feb	Municipality	30-Jan	31-Jan	01-Feb	Municipality	30-Jan	31-Jan	01-Feb
Abadiyeh	L	M	M	Ain Mouaffaq	L	M	M	Araiya	L	M	M
Arbaniyeh	L	L	M	Arsoun	L	L	M	Baabda	M	M	MH
Baalchmey	ML	M	M	Bmaryam	L	L	M	Bourj El-Brajneh	M	M	MH
Boutchay	M	M	M	Bsaba Baabda	ML	M	M	Btekhney	L	L	M
Btibyat	L	L	M	Bzbeddine	L	L	M	Chbeniyeh	L	L	M
Chiyah	M	M	MH	Chmeisset Baabda	L	L	M	Chouit	L	ML	M
Deir El-harf	L	L	M	Deir Khouna	L	L	M	Dlaybeh	L	L	M

Falougha	L	L	M	Furn El-Chebbak	M	M	MH	Hadath Beyrouth	M	M	MH
Halaliyeh Baabda	L	ML	M	Hammana	L	L	M	Haret El Sett	L	M	M
Haret Hamze	L	L	M	Haret Hreik	M	M	MH	Hasbaiya El-Metn	L	L	M
Jouar El-Hoz	VL	VL	M	Jouret Arsoun	L	L	M	Kfar Chima	M	M	MH
Kfar Selouane	L	L	M	Khalouat Baabda	L	L	M	Kneisset Baabda	L	L	M
Laylakeh	M	M	MH	Louayzeh Baabda	M	M	M	Merdache	M	M	M
Mzairaa Baabda	L	ML	M	Ouadi Chahrour El Ol	ML	M	M	Ouadi Chahrour El So	ML	M	M
Qalaa Baabda	L	L	M	Qhraybe Baabda	L	L	M	Qobbayaa	L	L	M
Qornayel	L	L	M	Qortada	L	M	M	Qrayeh Baabda	L	L	M
Qsaibeh Baabda	L	M	M	Qtale Baabda	L	L	M	Ras El Metn	L	ML	M
Ras El-Haref	L	L	M	Rouayset El-Ballout	L	ML	M	Salima Baabda	L	L	M
Tahouitat El Ghadir	M	M	MH	Tarchich	L	L	M	Zandouqa	L	M	M

Aley

Municipality	30-Jan	31-Jan	01-Feb	Municipality	30-Jan	31-Jan	01-Feb	Municipality	30-Jan	31-Jan	01-Feb
Abey	L	M	M	Aghmid	VL	L	M	Ain Dara	L	L	M
Ain Drafil	L	M	M	Ain El Halazoun	L	L	M	Ain El-Rmmaneh	L	ML	M
Ain Jedideh	ML	M	M	Ain Ksour	L	M	M	Ain Onoub	ML	M	M
Ain Traz	L	M	M	Ainab	L	M	M	Aley	ML	M	M
Aramoun	ML	M	M	Aytat	ML	M	M	Azouniyeh	VL	L	M
Baawerta	ML	M	M	Badghan Oua Wadi Bad	L	L	M	Bassatine	L	M	M
Bayssour	L	M	M	Bchamoun	ML	M	M	Bdadoun	L	M	M
Behouara	L	ML	M	Bennay	L	M	M	Bhamdoun El-Dayaa	ML	M	MH
Bhamdoun El-Mhatta	L	ML	MH	Bkhechtey	ML	M	M	Bleibel	ML	M	M
Bmakine	ML	M	MH	Bmehray	L	L	M	Bouzrid	L	M	M
Bserrine	L	L	M	Bsous	L	M	M	Btalloun	ML	M	MH
Btater	L	ML	M	Chanay	L	ML	MH	Charoun	L	L	M
Chartoun	L	ML	M	Chemlane	L	M	M	Choueifat El-Aamrous	M	M	MH
Choueifat El-Oumara	M	M	MH	Choueifat El-Quoubbe	M	M	MH	Dakkoun	L	M	M
Deir Qoubel	ML	M	M	Dfoun	ML	M	M	Douair El Remmaneh	L	ML	M
Ghaboun	L	ML	M	Habramoun	L	L	M	Homs Oua Hama	L	L	M
Houmal	ML	M	M	Jisr El Qadi	L	M	M	Kehaleh	L	ML	M
Keyfoun	ML	M	M	Kfar Aamey	L	L	M	Kommatyeh	ML	M	M
Maasrati	L	L	M	Majdel Baana	L	L	MH	Mansourieh et Ain El	L	ML	MH
Mazraat El-Nahr	L	L	M	Mchakhte	VL	L	M	Mecherfeh	L	L	M
Mejdlaya	L	M	M	Mrayjat	VL	L	M	Ramliyah	L	L	M
Rechmaya	L	L	M	Rejmeh	L	ML	M	Remhala	L	M	M
Rouaysset El Neemane	L	L	M	Saoufar	L	L	M	Selfaya	L	M	M
Sirhmoul	L	M	M	Souq El Ghareb	ML	M	M	Taazanieh	ML	M	MH

Kesrouane

Municipality	30-Jan	31-Jan	01-Feb	Municipality	30-Jan	31-Jan	01-Feb	Municipality	30-Jan	31-Jan	01-Feb
Achkout	L	M	M	Adma Oua Dafneh	M	M	M	Ain Ed-Delbe Kesroua	L	L	M
Ain El-Rihane	M	M	M	Aintoura Kesrouane	M	M	MH	Ajaltoun	ML	M	M
Akaybeh Kesrouane	M	M	MH	Aramoun Kesrouane	ML	M	M	Azra ouel Ozor	ML	M	M
Ballouneh	ML	M	M	Batha	ML	M	M	Bekaatat Achkout	L	ML	M
Bekaatat Kanaan	VL	L	M	Bizhel	M	M	M	Bouar	M	M	M
Bqaatouta	VL	L	M	Bqaq Ed-Dine	M	M	M	Bzommar	ML	M	M

Chahtoul	L	M	M	Chnaniir	M	M	M	Chouan	L	L	M
Daraya Kesrouane	L	M	M	Darououn	M	M	M	Deir Baqlouch	M	M	M
Dlebta	ML	M	M	Eghbeh	L	M	M	Faraya	VL	VL	M
Fatka	M	M	M	Feytroun	L	L	M	Ghazir	M	M	M
Ghbaleh Kesrouane	ML	M	M	Ghedrass	ML	M	M	Ghosta	ML	M	M
Ghynéh	ML	M	M	Harharaya w Kattine	ML	M	M	Harissa Kesrouane	M	M	M
Hayata	L	M	M	Hosein	L	M	M	Hrajel	L	L	M
Jdeideh Ghazir	M	M	M	Jeita	M	M	M	Jounieh Ghadir	M	M	MH
Jounieh Haret Sakhr	M	M	MH	Jounieh Salel Alma	M	M	M	Jounieh Sarba	M	M	MH
Jouret Bedrane	ML	M	M	Jouret Mhad	L	L	M	Jouret Termos	ML	M	M
Kfar Debiane	L	L	M	Kfar Tay Kesrouane	VL	VL	M	Kfar Yassine	M	M	MH
Kfour Kesrouane	ML	M	M	Kharayeb Nahr Ibrahi	M	M	M	Klayaat Kesrouane	L	M	M
Maarab	ML	M	M	Maaysra Kesrouane	M	M	M	Mayrouba	L	L	M
Mazraat Er-Ras	M	M	MH	Mazraat Mrah El-Mir	L	M	M	Mchaa El Ftouh	L	L	M
Mchaa Faraya	VL	VL	M	Mchaa Kfar Dibiane	L	VL	M	Mghaer	L	L	M
Mradiyah	ML	M	M	Nahr Ed-Dahab	L	L	M	Nammoura Kesrouane	M	M	M
Ouata El Jaouz	L	L	M	Ouata Sillam	M	M	MH	Raachine	L	L	M
Rayfoun	ML	M	M	Safra Kesrouane	M	M	MH	Shayle Kesrouane	ML	M	M
Tabarja	M	M	MH	Yahchouch	L	L	M	Zaaytreh	ML	M	M
Zeytoun	M	M	M	Zouk Mikael	M	M	MH	Zouk Mosbeh	M	M	MH

Baalbek_Hermel

Baalbek

Municipality	30-Jan	31-Jan	01-Feb	Municipality	30-Jan	31-Jan	01-Feb	Municipality	30-Jan	31-Jan	01-Feb
Aadous	ML	ML	M	Aamchki	L	L	M	Aarsal	M	ML	M
Ain Baalbek	M	M	M	Ain Bourday	ML	L	M	Ain El-Benye	L	VL	M
Ain El-Jaouz Baalbek	L	VL	M	Ain El-Siya Chadoura	L	L	M	Al Khodr Baalbek	ML	ML	M
Al Nabi Chit	ML	L	M	Aynata Baalbek	ML	L	M	Baalbek	ML	ML	M
Bachwat	L	L	M	Barqa	L	ML	M	Bednayel Baalbak	M	L	M
Beit Chama	M	ML	M	Bijjaje	M	M	M	Bouday	ML	L	M
Brital	ML	ML	M	Btadi	L	L	M	Chaat	ML	ML	M
Chaibe	L	L	M	Chlifa	ML	ML	M	Chmestar	ML	ML	M
Dar El-Oussa	L	ML	M	Deir El-Ahmar	L	L	M	Deir Mar Maroun Baal	M	M	M
Douris	ML	ML	M	Fakiha	M	M	M	Hadath Baalbek	ML	ML	M
Ham	L	L	M	Haour Taala	ML	ML	M	Hizzine	L	L	M
Hlebta	ML	M	M	Hosh Barada	ML	ML	M	Hosh El Dahab	ML	ML	M
Hosh El Snid	L	ML	M	Hosh El-Nabi	L	ML	M	Hosh El-Rafiq	ML	ML	M
Hosh Tal Safiya	ML	ML	M	Hrebta	ML	ML	M	laat	ML	ML	M
Jebaa	M	ML	M	Jenta	L	L	M	Kfar Dabach	ML	ML	M
Kfar Dane	ML	L	M	Khraibeh El-Hermel	ML	M	M	Khreibet Baalbek	M	L	M
Kneisset Baalbek	ML	ML	M	Labueh	ML	M	M	Maarboun	L	L	M
Majdaloun	ML	ML	M	Maqneh	M	M	M	Mazraat Beit Mcheik	M	L	M
Misraya	L	ML	M	Moqraq	ML	M	M	Nabha El-Damdoum	L	ML	M
Nabi Chbay	L	L	M	Nabi Osman	M	M	M	Nahleh baalbek	ML	L	M
Ouadi El-Oss	ML	M	M	Qaa Baayoun	M	M	M	Qaa Jouar Maqiye	M	M	M
Qaa Ouadi El-Khanzir	M	M	M	Qah Baalbek	M	M	M	Qarha Baalbek	L	L	M

Qsarnaba	ML	L	M	Ram Baalbek	L	ML	M	Ras Baalbek El Sahl	M	M	M
Ras Baalbek El-Charq	M	M	M	Riha	L	L	M	Saaide	L	L	M
Sbouba	ML	M	M	Seriine El-Tahta	ML	ML	M	Slouqi	ML	L	M
Taiba Baalbek	M	M	M	Talia	L	ML	M	Taraiya	ML	L	M
Temnin El Fawqa	ML	L	M	Temnin El-Tahta	L	L	M	Tfail	ML	L	M
Yahfoufa	ML	L	M	Yammouneh	L	L	M	Younine	ML	ML	M
Zboud	M	M	M								

Hermel

Municipality	30-Jan	31-Jan	01-Feb	Municipality	30-Jan	31-Jan	01-Feb	Municipality	30-Jan	31-Jan	01-Feb
Charbine El-Hermel	M	ML	M	Hermel Jbab	M	L	M	Hermel	M	M	M
Maaysra El-Hermel	L	M	M	Michaa Mrajhine	ML	L	M	Ouadi Faara	M	M	M
Ras Baalbek - Ouadi	M	M	M	Ras Baalbek El Gharb	M	M	M	Zighrine	M	M	M

Akkar

Akkar

Municipality	30-Jan	31-Jan	01-Feb	Municipality	30-Jan	31-Jan	01-Feb	Municipality	30-Jan	31-Jan	01-Feb
Aain Tinta	M	M	M	Aaiyat	M	M	M	Aakkar El-Aatiqa	ML	L	M
Aamar Akkar	M	M	M	Aamar El Baykat	M	M	M	Aamayer	M	M	M
Aamriyet Akkar	M	M	M	Aandqet	M	M	M	Aarmeh	M	M	M
Aarqa	M	M	M	Aawaynat	M	M	M	Aayoun Akkar	M	M	M
Abboudiye	M	M	M	Ain El-Zeit	M	M	M	Ain Yaaqoub	ML	L	M
Akroum	M	M	M	Aridet Cheikh Zennad	M	M	M	Baldeh w Mazraat Bal	M	M	M
Barcha	M	M	M	Bardeh	M	M	M	Bebnine	M	M	M
Beino	M	M	M	Beit Ayoub	M	M	M	Beit El-Haouch	M	M	M
Beit Mellat	M	M	M	Beit Younes	M	M	M	Berbara Akkar	M	M	M
Berqayel	M	M	M	Bezbina	ML	L	M	Bireh Akkar	M	M	M
Borj	M	M	M	Bqerezla	M	M	M	Bzal	M	M	M
Chane	M	M	M	Chaqdouf	ML	L	M	Charbila	M	M	M
Cheikh Mohammad	M	M	M	Cheikh Taba Es-Sahl	M	M	M	Cheikh Taba	M	M	M
Cheikh Zennad	M	M	M	Cheikhlar	M	M	M	Chir Hmairine	M	M	M
Daghle	M	M	M	Dahr Laissine	M	M	M	Darine	M	M	M
Dawra	M	M	M	Dawsa w Baghdadi	M	M	M	Dayret Nahr El-Kabir	M	ML	M
Deir Dalloum	M	M	M	Deir Jennine	M	M	M	Denbou	M	M	M
Dibbabiyyeh	M	M	M	Douair Aadwiyeh	M	M	M	Fassikine	M	M	M
Fnaydek	ML	L	M	Fraydes Akkar	M	M	M	Ghazayle	M	M	M
Habchit	M	M	M	Hakour	M	M	M	Halba	M	M	M
Haouchab	M	M	M	Hayssat	M	M	M	Haytla	M	M	M
Hayzouq	M	M	M	Hedd	M	M	M	Hmaira Akkar	M	M	M
Hmaiss Akkar	M	M	M	Hnaider	M	M	M	Hokr Ed-Dahri	M	M	M
Hokr Etti	M	M	M	Hokr Jouret Srar	M	M	M	Houaich	M	M	M
Hrar	ML	L	M	Idbil	M	M	M	Ilal	M	M	M
Janine	M	M	M	Jdeidet El-Joumeh	M	M	M	Jdeidet El-Kaiteh	M	M	M
Jebroyel	M	M	M	Kafr	M	M	M	Kafr	M	M	M
Karm Asfour	M	M	M	Kfar Melki Akkar	M	M	M	Kfar Noun	M	M	M
Kfarharra	M	M	M	Khalsa	M	M	M	Kharnoubet Akkar	M	M	M

Khirbet Daoud Aakkar	M	M	M	Khirbet El Remmane	M	M	M	Khirbet Shar	M	M	M
Khoreybet El-Jindi	M	M	M	Khreibet Aakkar	M	M	M	Kneisset Aakkar	M	M	M
Kneisset Hnaider	M	M	M	Knisse	M	M	M	Kroum El-Aarab	M	M	M
Kwachra	M	M	M	Kweykhat	M	M	M	Machta Hammoud	M	M	M
Majdala	M	M	M	Majdel Akkar	M	M	M	Mar Touma	M	M	M
Marlaya Melhem	M	M	M	Mashha	M	M	M	Massoudiye	M	M	M
Mazraat Beit Ghattas	M	M	M	Mazraat En-Nahriye	M	M	M	Mechmech	ML	L	M
Memneh	M	M	M	Mhammara	M	M	M	Mighraq Aakkar	M	M	M
Minyara	M	M	M	Moqayteh	M	M	M	Mounjez	M	M	M
Msalla	M	M	M	Mzeihmeh	M	M	M	Nfaiseh	M	M	M
Noura Et-Tahta	M	M	M	Ouadi El-Haour	M	M	M	Ouadi El-Jamous	M	M	M
Ouyoun El-Ghizlane	M	M	M	Qaabarine	M	M	M	Qabaait	M	M	M
Qachlaq	M	M	M	Qantara Aakkar	M	M	M	Qarha Aakkar	M	M	M
Qarqaf	M	M	M	Qboula	M	M	M	Qleiaat Aakkar	M	M	M
Qloud El-Baqie	M	M	M	Qobaiyat Aakkar	M	M	M	Qobbat Chamrat	M	M	M
Qorayat	M	M	M	Qornet Aakkar	M	M	M	Qsair Aakkar	M	M	M
Rahbe	M	M	M	Rihaniyet Aakkar	M	M	M	Rmah	M	M	M
Rmoul	M	M	M	Saadine	M	M	M	Sadaqa	ML	L	M
Saidnaya	M	M	M	Sammouniye	M	M	M	Sayssouq	M	M	M
Semmaqiye	M	M	M	Semmaqli	M	M	M	Sfinet El-Dreib	M	M	M
Sfinet El-Qaitaa	M	M	M	Sindyanet Zeidane	M	M	M	Souaisset Aakkar	M	M	M
Srar	M	M	M	Tal Abbas El Gharby	M	M	M	Tal Abbas El-Chargy	M	M	M
Tal Biret	M	M	M	Tal Hmayra	M	M	M	Tal Maayan Tal Kiri	M	M	M
Tal Sibel	M	M	M	Tallet Chattaha	M	M	M	Tikrit	M	M	M
Tleil	M	M	M	Tshea	ML	L	M	Zawarib	M	M	M
Zouq El Hosniyeh	M	M	M	Zouq El-Haddara	M	M	M	Zouq El-Hbalsa	M	M	M
Zouq El-Moqachrine	M	M	M								

Sud

Sour

Municipality	30-Jan	31-Jan	01-Feb	Municipality	30-Jan	31-Jan	01-Feb	Municipality	30-Jan	31-Jan	01-Feb
Aaiyeh	ML	M	M	Aalma El-Chaab	ML	M	M	Aaytit	M	M	M
Abbassiyeh Sour	M	M	M	Abou Chech	ML	M	M	Ain Abou Abdallah	M	M	M
Ain Baal	M	M	M	Arzoun	M	M	M	Aziyeh	M	M	M
Baflaya	M	M	M	Barich	M	M	M	Batouliyeh	M	M	M
Bayad	M	M	M	Bazouriyeh	M	M	M	Bediass	M	M	M
Bestiyat	M	M	M	Borj El Chemali	M	M	M	Borj En-Naqoura	M	M	M
Borj Rahhal	M	M	M	Boustane	ML	M	M	Btaychiyeh	ML	M	M
Chaaitiye	M	M	M	Chameh	ML	M	M	Chehabiye	ML	M	M
Chehour	M	M	M	Chihine	ML	M	M	Debaal Sour	M	M	M
Deir Amess	ML	M	M	Deir Kifa	M	M	M	Deir Qanoun El-Ain	M	M	M
Deir Qanoun El-Naher	M	M	M	Derdghaiya	M	M	M	Dhayra	ML	M	M
Halloussiyeh	M	M	M	Hamoul	M	M	M	Hanaouey	M	M	M
Henniye	M	M	M	Hmairi Sour	M	M	M	Iskandarouna Sour	M	M	M
Jbal El Botom	ML	M	M	Jebbin	ML	M	M	Jennata	M	M	M
Jijim	ML	M	M	Jouaiya	M	M	M	Kneisset Sour	M	M	M

Maarake	M	M	M	Maaroub	M	M	M	Majadel	M	M	M
Majdalzoun	M	M	M	Mansouri Sour	M	M	M	Marnba	M	M	M
Marouahine	ML	M	M	Mazraat El-Zalloutiy	ML	M	M	Mazraat Mechref	M	M	M
Mazraat Tayr Semhat	M	M	M	Mheilib	M	M	M	Neffakhiyeh	ML	M	M
Niha Sour	ML	M	M	Ouadi Jilo	M	M	M	Qana	M	M	M
Qolaileh Sour	M	M	M	Rechknay	ML	M	M	Rmadiyah	M	M	M
Selha Sour	ML	M	M	Siddiqine	M	M	M	Sour	M	M	M
Srifa	M	M	M	Tayr Debbe	M	M	M	Tayr Felsay	M	M	M
Tayr Harfa	ML	M	M	Touayri	ML	M	M	Toura	M	M	M
Yanouh Sour	M	M	M	Yarine	ML	M	M	Zebqine	ML	M	M

Saida

Municipality	30-Jan	31-Jan	01-Feb	Municipality	30-Jan	31-Jan	01-Feb	Municipality	30-Jan	31-Jan	01-Feb
Aanqoun	M	M	M	Aaqtanit	M	M	M	Aarab Ej-Jall	M	M	M
Aarab Tabbaya	M	M	M	Abra Saida	M	M	M	Adloun	M	M	M
Adousiyeh	M	M	M	Ain-El-Deleb	M	M	M	Arzai	M	M	M
Babliyah	M	M	M	Barty	ML	M	M	Bissariyeh	M	M	M
Bnaafoul	M	M	M	Bqosta	M	M	M	Bramiy	M	M	M
Daoudiyeh	M	M	M	Dareb El-Sim	M	M	M	Erkay	M	M	M
Ghassanieh	M	M	M	Ghazieh	M	M	M	Hajjeh	M	M	M
Haret Saida	M	M	M	Hartiyeh	M	M	M	Hlaliye Saida	M	M	M
Insariyat	M	M	M	Jazira Saida	M	M	M	Kafar Bit	ML	M	M
Kaoutariyet El-Siyad	M	M	M	Kfar Chellal	ML	M	M	Kfar Hatta Saida	M	M	M
Kfar Milke Saida	ML	M	M	Khartoum	M	M	M	Khaziz	M	M	M
Khirbet Ed-Douair Sa	M	M	M	Khirbet El-Bassal	M	M	M	Khrayeb Saida	M	M	M
Loubieh	M	M	M	Maghdouche	M	M	M	Majdelyoun	M	M	M
Matariyet El-Choumar	M	M	M	Matayriyeh	M	M	M	Mazraat 'Mseileh	M	M	M
Mazraat 'Snaiber	M	M	M	Mazraat Aarab Soukka	M	M	M	Mazraat Deir Taqla	M	M	M
Mazraat El Yahoudiye	M	M	M	Mazraat El-Housseini	M	M	M	Mazraat El-Mhaydaleh	M	M	M
Mazraat El-Ouasta	M	M	M	Mazraat Jamjim	M	M	M	Mazraat Kaoutariyet	M	M	M
Mazraat Kfar Badda	M	M	M	Mazraat Oussamiyat	M	M	M	Mazraat Sari	M	M	M
Mazraat Sinai	M	M	M	Meemariyeh	M	M	M	Merouaniyeh	M	M	M
Miyeh ou Miyeh	M	M	M	Najjariyeh	M	M	M	Qaaqaiyat El-Snaouba	M	M	M
Qnarit	M	M	M	Qraiye Saida	M	M	M	Saida Ed-Dekermane	M	M	M
Saida El-Oustani	M	M	M	Saida El-Qadimeh	M	M	M	Saida Kefraya	M	M	M
Saksakiyeh	M	M	M	Salhieh Saida	M	M	M	Sarafand	M	M	M
Sfenta	L	M	M	Tafahta	M	M	M	Tanbourit	M	M	M
Tebna	M	M	M	Zaghdraiya	M	M	M	Zeita	M	M	M
Zrariyeh	M	M	M								

Jezzine

Municipality	30-Jan	31-Jan	01-Feb	Municipality	30-Jan	31-Jan	01-Feb	Municipality	30-Jan	31-Jan	01-Feb
Ain El-Mir (El Estab	M	M	M	Anane	L	ML	M	Aramta	ML	ML	M
Ariya	L	L	M	Aychiyeh	L	ML	M	Azour	L	L	M
Baba	L	L	M	Bayssour Jezzine	M	M	M	Benoueteh Jezzine	L	L	M
Bhannine	VL	L	M	Bisri	L	L	M	Bkassine	L	L	M
Bouslaya	L	ML	M	Btedine El-Leqech	L	L	M	Chbail	L	L	M
Choualiq Jezzine	M	M	M	Dahr Ed-Deir	L	ML	M	Deir El Qattine	L	L	M

Demachqiyeh	ML	M	M	Ghabbatiyeh	L	L	M	Harf Jezzine	L	L	M
Hassaniyeh	M	M	M	Haytouleh	ML	M	M	Haytura	L	L	M
Hidab	L	L	M	Homsiyeh	L	L	M	Jabal Toura	L	L	M
Jarmaq	ML	M	M	Jensnaya	M	M	M	Jernaya	M	M	M
Jezzine	L	L	M	Karkha	ML	M	M	Kfar Falous	ML	M	M
Kfar Houna	L	L	M	Kfar Jarrah	M	M	M	Lebaa	M	M	M
Louayzet Jezzine	L	L	M	Machmouche	L	L	M	Mahmoudiyeh Jezzine	ML	M	M
Maknounye Jezzine	L	L	M	Maraat Ouzaïyeh	ML	M	M	Mazraat Daraya	L	L	M
Mazraat El-Aarqoub	L	ML	M	Mazraat El-Mathane	VL	L	M	Mazraat El-Rahbane	L	L	M
Mazraat Khallet Khaz	L	ML	M	Mazraat Louzid (Loua	L	L	M	Mazraat Qrouh	ML	M	M
Mazraat Tamra	ML	M	M	Mazraat Zighrine Jez	L	L	M	Mazraat	L	L	M
Mharbiyeh	M	M	M	Midane Jezzine	L	L	M	Mjeydel Jezzine	M	M	M
Mlikh	L	L	M	Mrah El-Hbasse	M	M	M	Ouadi Baanquodaine	M	M	M
Ouadi El-Laymoun	M	M	M	Ouardiyeh	L	L	M	Qabaa Jezzine	L	L	M
Qatrani	L	L	M	Qaytouleh	L	L	M	Qtaleh Jezzine	L	ML	M
Rihane Jezzine	ML	ML	M	Rimat	L	ML	M	Roum	L	L	M
Roummanet	L	ML	M	Sabbah	L	L	M	Saydoun	L	ML	M
Sfaray	L	ML	M	Snaya	L	L	M	Sojoud	L	ML	M
Srayri	L	L	M	Taaid	L	L	M	Wadi Jezzine	L	L	M
Zhalta	L	L	M								

Bekaa

West Bekaa

Municipality	30-Jan	31-Jan	01-Feb	Municipality	30-Jan	31-Jan	01-Feb	Municipality	30-Jan	31-Jan	01-Feb
Aammiq BG	ML	L	M	Ain El Tineh BG	L	L	M	Ain Zebdeh	L	L	M
Ana	ML	L	M	Aytanit	L	L	M	Baaloul BG	ML	L	M
Bab Mareh	L	L	M	Chouberqiye Aammiq	ML	L	M	Dakoue	ML	L	M
Deir Ain El-Jaouze	L	L	M	Deir Tahniche	ML	L	M	Ghaza	ML	L	M
Harime El-Soughra	ML	L	M	Hoch Harimeh	ML	L	M	Jazira BG	ML	L	M
Jib Jennine	L	L	M	Kamed-El-Laouz	L	L	M	Kefraya BG	L	L	M
Khiara El Atika	ML	L	M	Khiara	ML	L	M	Khirbet Qanafar	L	L	M
Lala	L	L	M	Lebbaya BG	L	L	M	Loussa	ML	L	M
Machghara	L	L	M	Manara (Hammara) BG	L	L	M	Mansoura BG	ML	L	M
Marej BG	ML	L	M	Maydoun	ML	L	M	Ouaqf BG	ML	L	M
Qaraaoun	L	L	M	Qelya	ML	ML	M	Raouda (Istabel)	ML	ML	M
Saghbine	L	L	M	Sohmor	L	L	M	Soltan Yacoub el Ara	ML	L	M
Souairy	L	L	M	Sultan Yaacoub	L	L	M	Tal Znoun	ML	L	M
Yehmor BG	L	L	M	Zilaya	L	L	M				

Zahle

Municipality	30-Jan	31-Jan	01-Feb	Municipality	30-Jan	31-Jan	01-Feb	Municipality	30-Jan	31-Jan	01-Feb
Aanjar (Haouch Mouss)	ML	ML	M	Ablah	ML	L	M	Ain Kfarzabad	ML	ML	M
Ali-El-Nahri	L	ML	M	Bar Elias	ML	ML	M	Bouarej	ML	L	M
Cheberqiyet Tabet	ML	L	M	Chtaura	ML	ML	M	Deir El Ghazal	L	L	M
Delhamiyet Zahle	L	ML	M	Ferzol	M	ML	M	Haouch El-Ghanam	L	ML	M
Haouch Es-Siyadeh	ML	L	M	Haouch Hala	L	ML	M	Haouch Mandara	ML	L	M

Haouch Qayssar	ML	L	M	Hezerta	M	L	M	Hosh Moussa	ML	ML	M
Jdita	ML	ML	M	Kfarzabad	ML	ML	M	Ksara	L	ML	M
Majdel Aanjar	L	L	M	Makssi	ML	ML	M	Massa	ML	L	M
Mazraat Er-Remtaniye	ML	L	M	Mrayjat Zahle	ML	L	M	Mzaraa Zahle	ML	L	M
Nabi Ayla	ML	ML	M	Nasriyet Rizk	ML	ML	M	Nasriyet Zahle	ML	L	M
Niha Zahle	ML	L	M	Ouadi Ed-Deloum	ML	L	M	Ouadi El-Arayech	M	ML	M
Qaa El Rim	M	L	M	Qab Elias	ML	ML	M	Qousaya	L	L	M
Rhit	L	L	M	Riyak	L	ML	M	Saadnayel	ML	ML	M
Taal El-Akhdar	ML	L	M	Taalbeya	ML	ML	M	Taanayel	ML	ML	M
Talamara	L	ML	M	Tcheflik Edde Haouch	M	L	M	Tcheflik Qiqano	ML	L	M
Terbol Zahle	ML	ML	M	Touaite Zahle	M	L	M	Zahle Aradi	ML	L	M
Zahle El-Berbara	ML	ML	M	Zahle El-Maallaqa	ML	ML	M	Zahle El-Midane	ML	ML	M
Zahle Er-Rassiye	ML	ML	M	Zahle Haouch El-Ouma	L	ML	M	Zahle Haouch El-Ouma	L	ML	M
Zahle Haouch Ez-Zara	ML	ML	M	Zahle Maalaga Aradi	ML	ML	M	Zahle Mar Antonios	ML	ML	M
Zahle Mar Elias	ML	ML	M	Zahle Mar Gerios	ML	ML	M	Zahle Saydet En-Naja	ML	ML	M
Zebdoul	ML	L	M								

Rachaiya

Municipality	30-Jan	31-Jan	01-Feb	Municipality	30-Jan	31-Jan	01-Feb	Municipality	30-Jan	31-Jan	01-Feb
Ain Arab Rachaiya	L	L	M	Ain Ata	L	L	M	Ain Harche	L	L	M
Aqabe Rachaya	L	L	M	Ayha	L	L	M	Ayta El Fokhar	L	L	M
Bakifa Rachaya	L	L	M	Bakka	L	L	M	Beit Lahya	ML	L	M
Bireh Rachaiya	L	L	M	Daher El Ahmar	L	L	M	Deir El-Achayer	M	L	M
Heloua Rachaiya	ML	L	M	Hoch El Qannabeh Rac	L	L	M	Kaoukaba Bou Arab	L	L	M
Kfar Danis	L	L	M	Kfar Mechki	L	L	M	Kfar Qouq	L	L	M
Kherbet Rouha	L	L	M	Majdel Balhiss	L	L	M	Mdoukha	L	L	M
Mhaydseh Rachaiya	L	L	M	Nabi Safa	L	L	M	Rachaiya	L	L	M
Rafid Rachaiya	L	L	M	Selsata (Mazraat Dei	M	L	M	Tannoura	L	L	M
Yanta	L	L	M								

Beyrouth

Beyrouth

Municipality	30-Jan	31-Jan	01-Feb	Municipality	30-Jan	31-Jan	01-Feb	Municipality	30-Jan	31-Jan	01-Feb
Achrafieh	M	M	MH	Ain el-Mreisse	M	M	MH	Bachoura	M	M	MH
Beirut Central Distr	M	M	MH	Marfai	M	M	MH	Mazraa	M	M	MH
Medaouar	M	M	MH	Minet el-Hosn	M	M	MH	Mwssaitbeh	M	M	MH
Ras Beirut	M	M	MH	Rmeil	M	M	MH	Saifi	M	M	MH
Zqaq el-Blat	M	M	MH								