

# Lebanon Fire Risk Bulletin



CIVIL DEDEFENCE

**Refer to cadast table condition.**

**Please note that the indicated temperature is at 2 meters height from the ground.**

*General description of potential fire risk situation*

Symbol	Level of risk	Meaning and actions
VL	<b>Very low</b>	Very low fire risk. Controlled burning operations can be hardly executed due to high fuel moisture content. Normally wildfires self-extinguish.
L	<b>Low</b>	Low fire risk. Controlled burning operations can be executed with a reasonable degree of safety.
ML	<b>Medium low</b>	Medium-low fire risk. Controlled burning operations can be executed in safety conditions. All the fires need to be extinguished.
M	<b>Medium</b>	Medium fire risk. Controlled burning operations would be avoided. All the fires need to be very well extinguished.
M	<b>Medium high</b>	Controlled burning is not recommended. Open flame will start fires. Cured grasslands and forest litter will burn readily. Spread is moderate in forests and fast in exposed areas. Patrolling and monitoring is suggested. Fight fires with direct attack and all available resources.
H	<b>High</b>	Ignition can occur easily with fast spread in grass, shrubs and forests. Fires will be very hot with crowning and short to medium spotting. Direct attack on the head may not be possible requiring indirect methods on flanks. Patrolling and monitoring the territory is highly suggested.
E	<b>Extreme</b>	Ignition can occur also from sparks. Fires will be extremely hot with fast rate of spread. Control may not be possible during day due to long range spotting and crowning. Suppression forces should limit efforts to limiting lateral spread. Damage potential total. Patrolling and monitoring the territory is highly suggested.

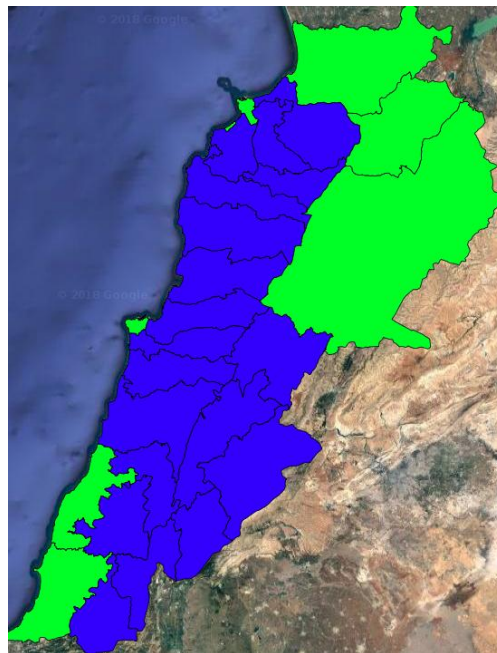
**Beirut, 9 January 2019**

# FIRE RISK INDEX

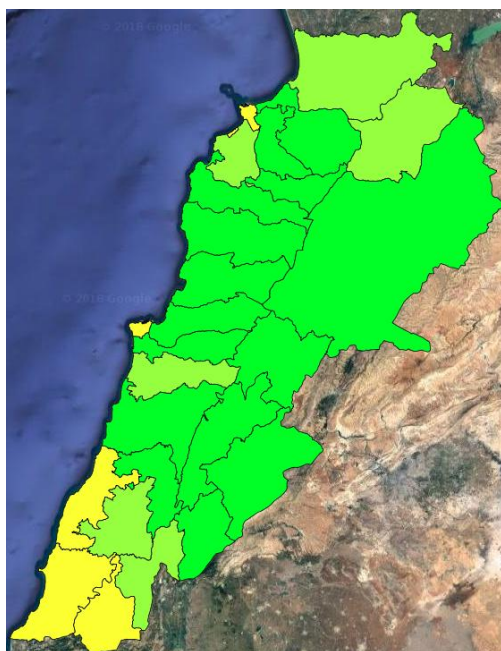
8 January 2019



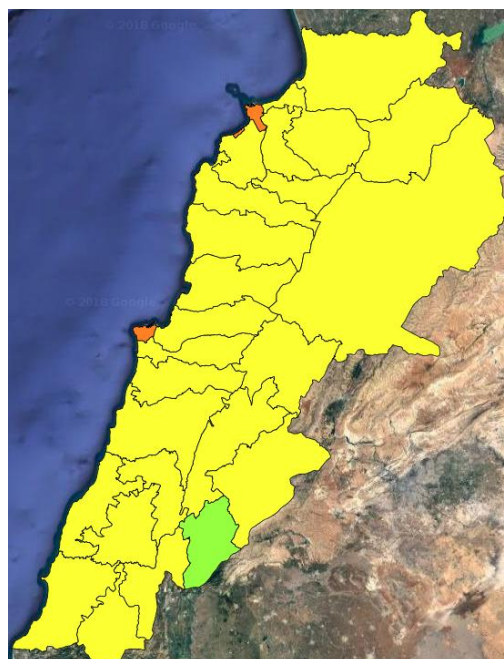
9 January 2019



10 Jan 2019



11 Jan 2019



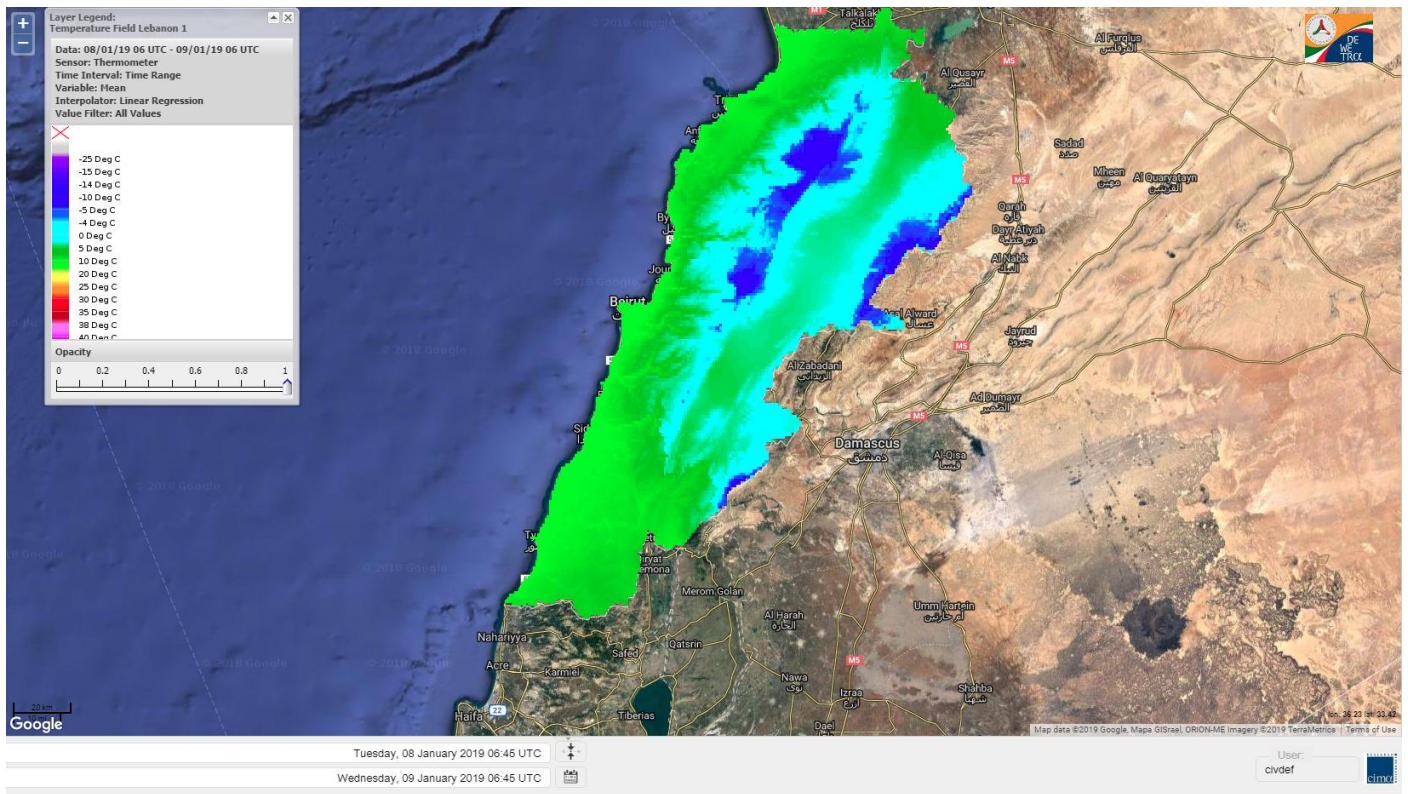
Layer Legend:

Lebanon Wildfire Risk Index 1

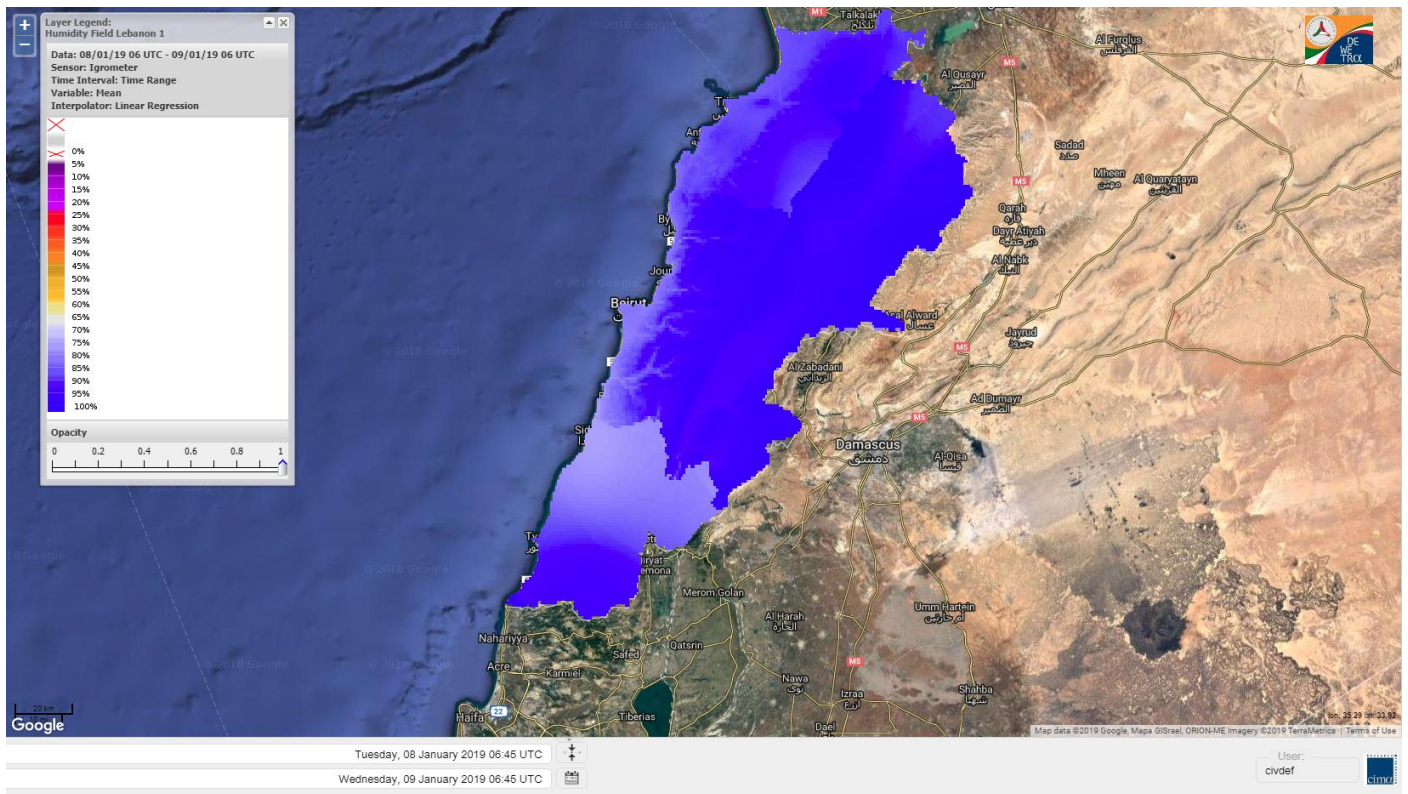
Data: Run: 09/01/2019 00:00. Forecast for 9  
Model: RISICO for the Republic of Lebanon  
Variable: Fire Weather Index  
Spatial Resolution: Caza

- VERY LOW
- LOW
- MEDIUM-LOW
- MEDIUM
- MEDIUM-HIGH
- HIGH
- EXTREME

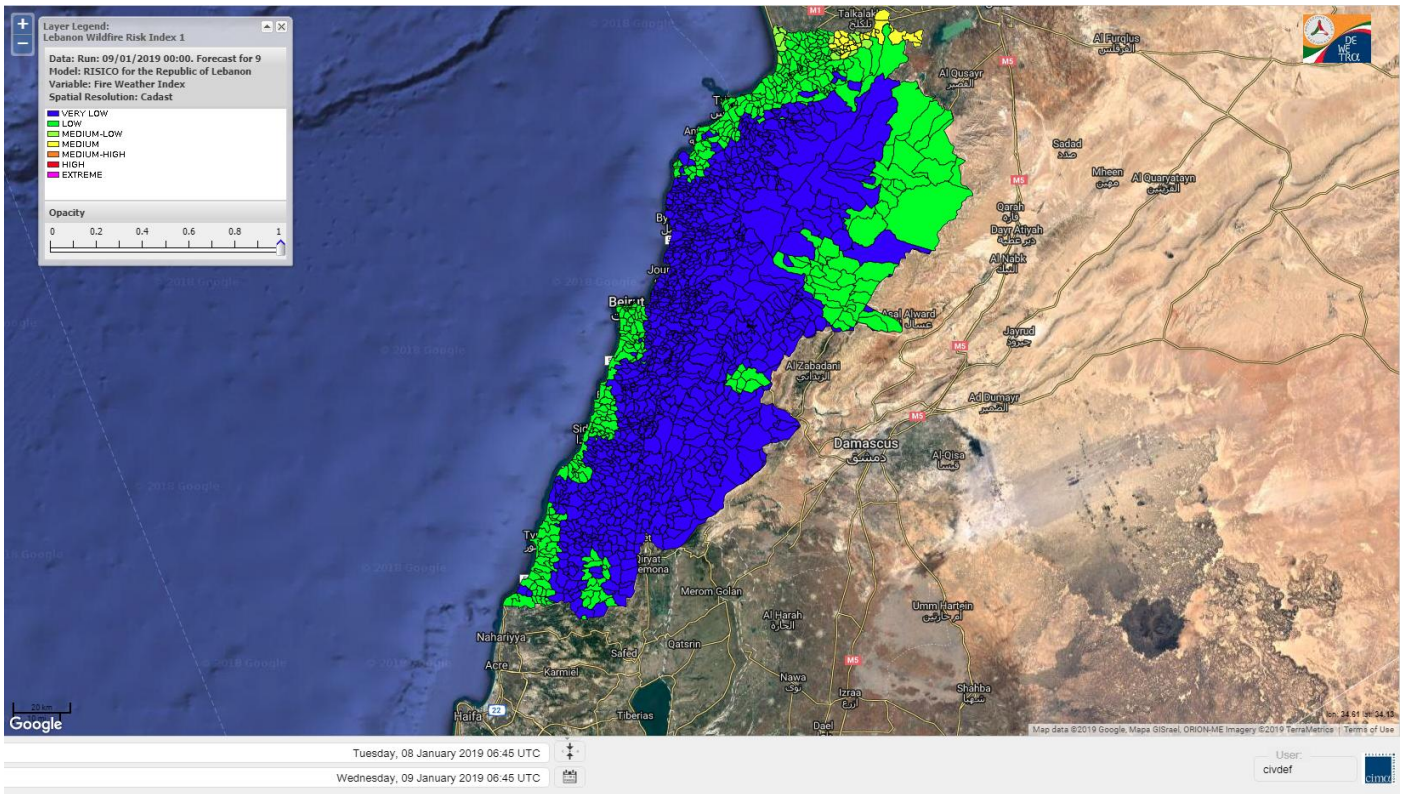
# Lebanon temperature for Lebanon 9 January 2019



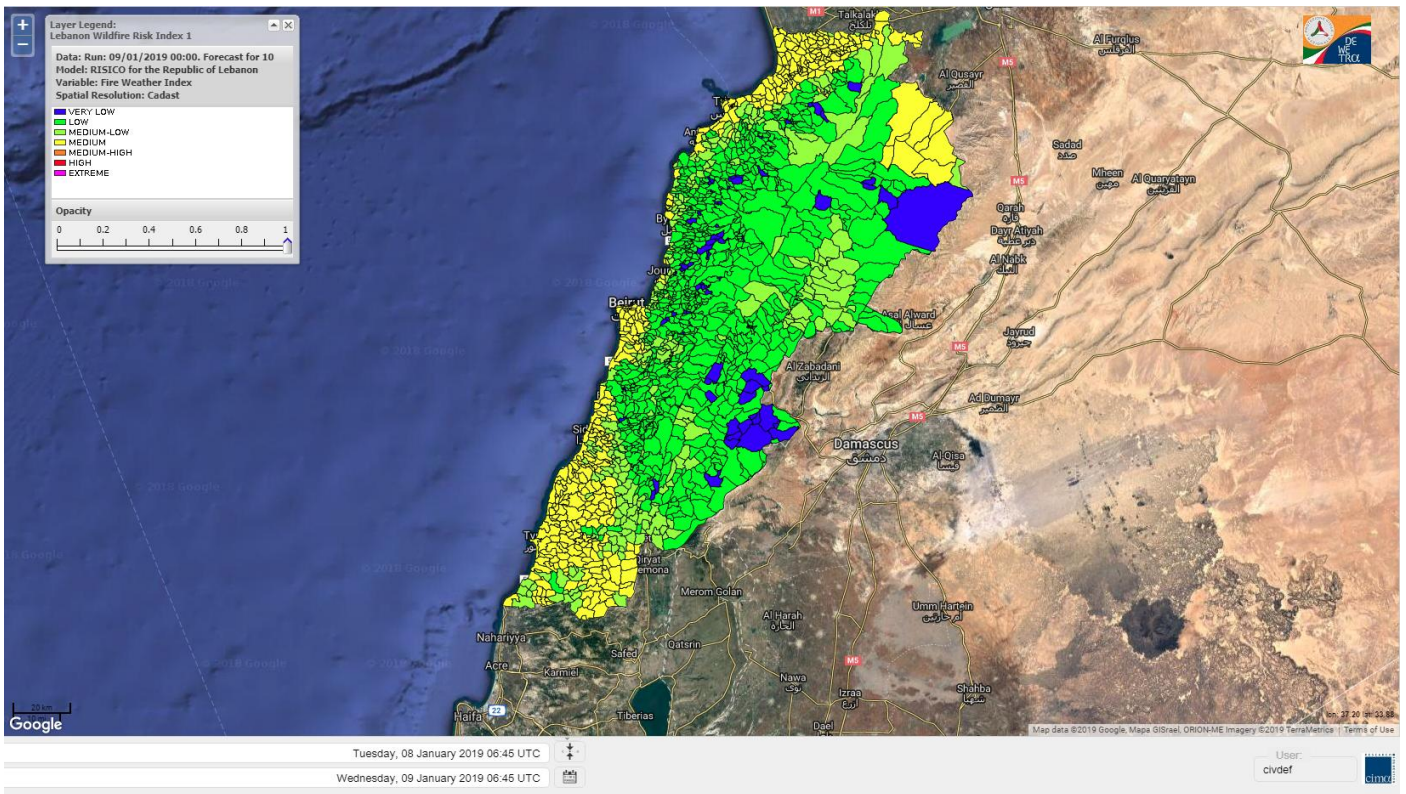
# Lebanon humidity for Lebanon 9 January 2019



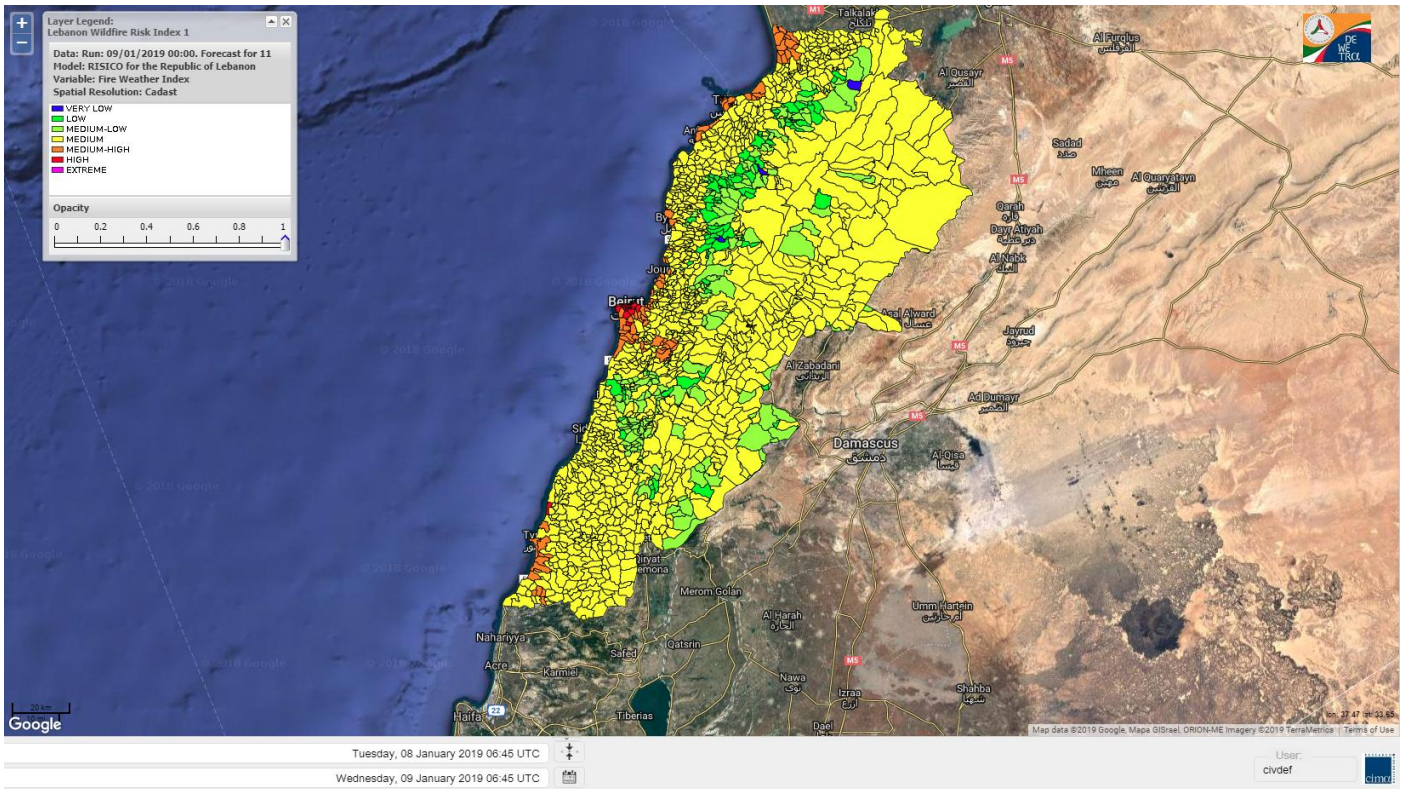
# Lebanon for 9 January 2019



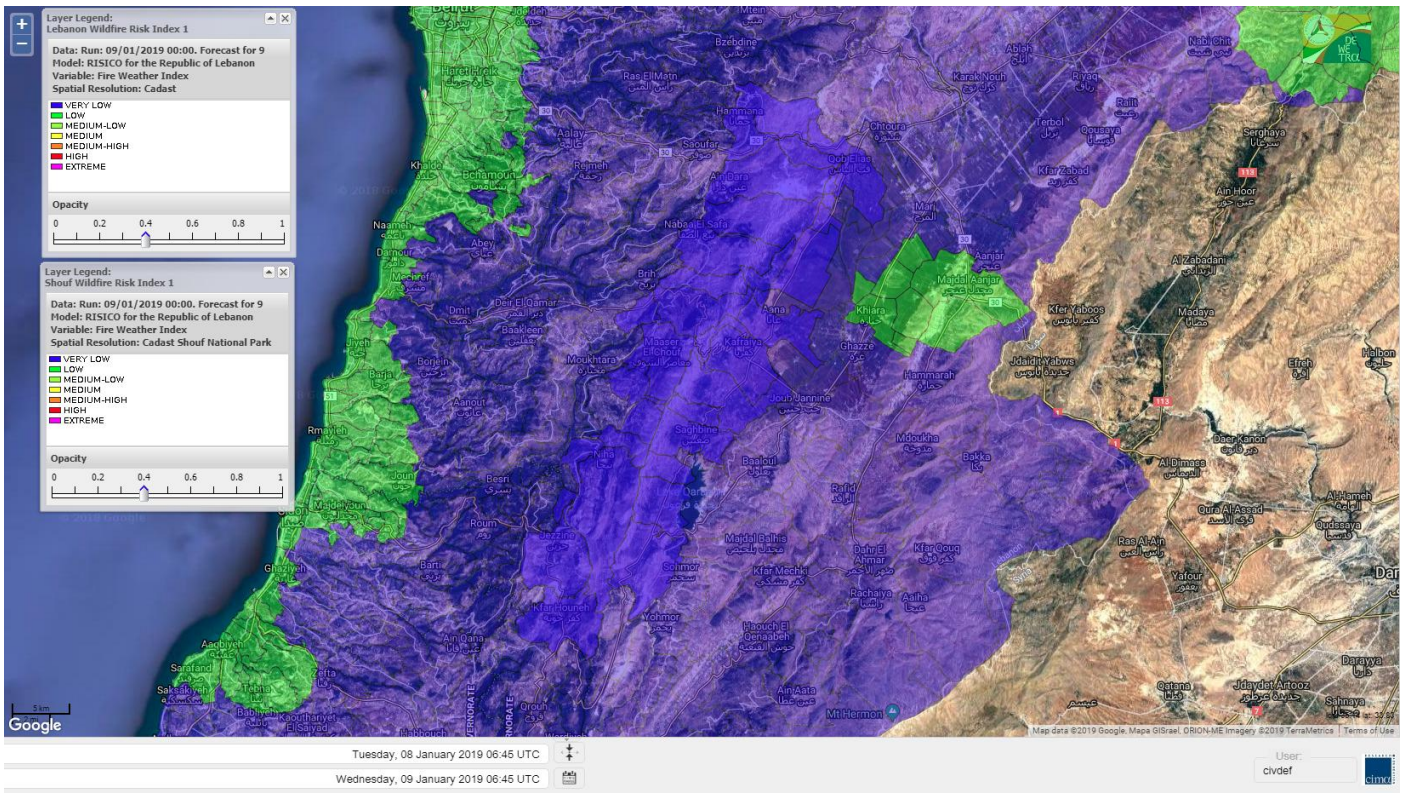
# Lebanon for 10 Jan 2019



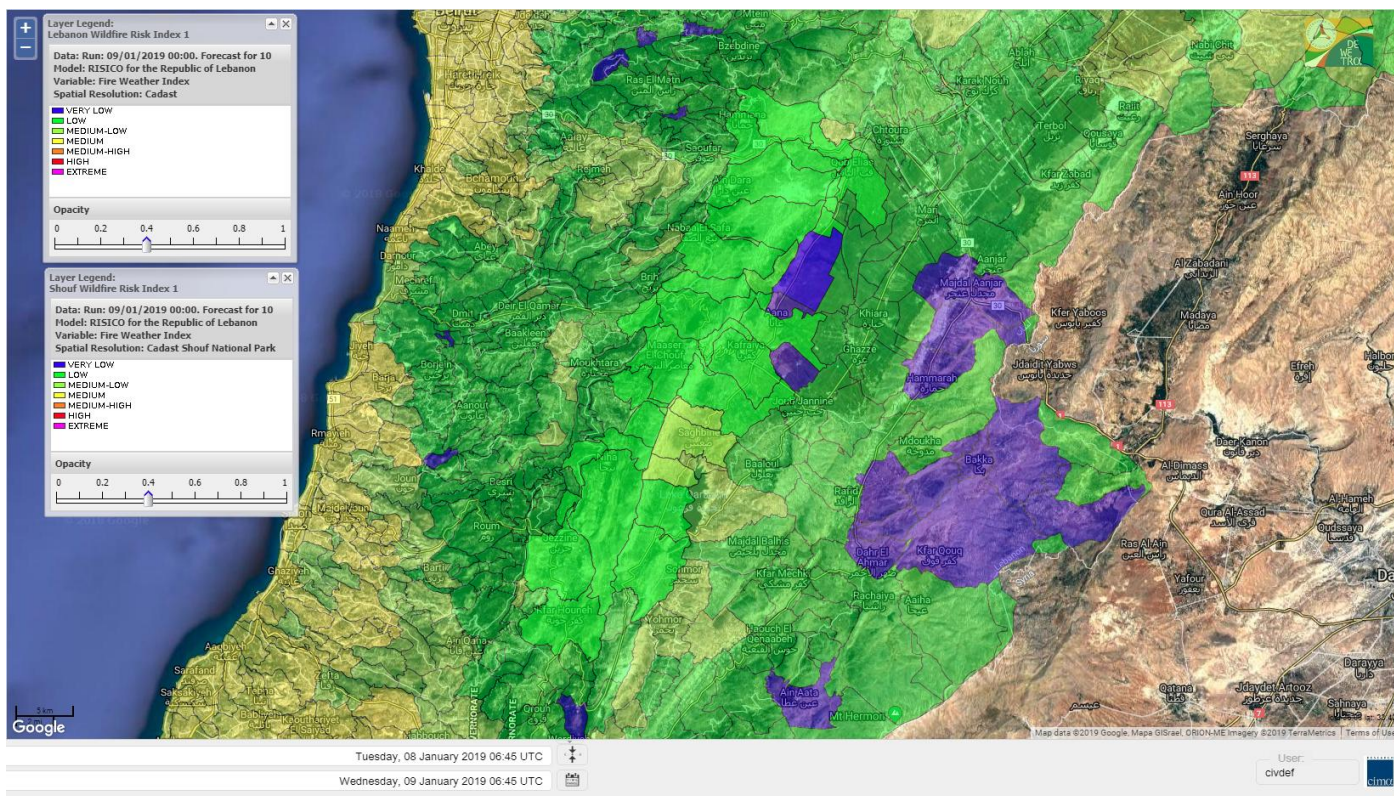
# Lebanon for 11 Jan 2019



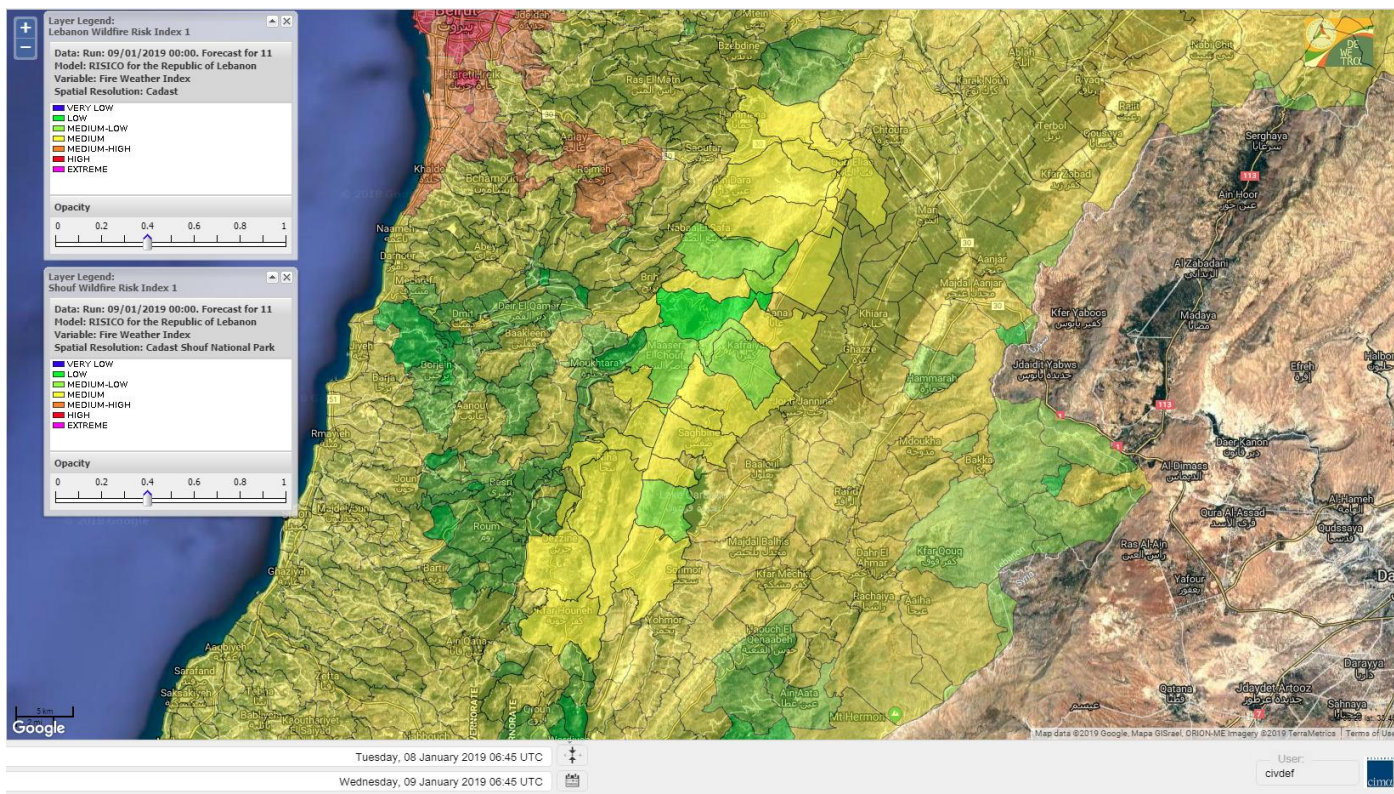
# Shouf Biosphere Reserve Forecast for 9 January 2019



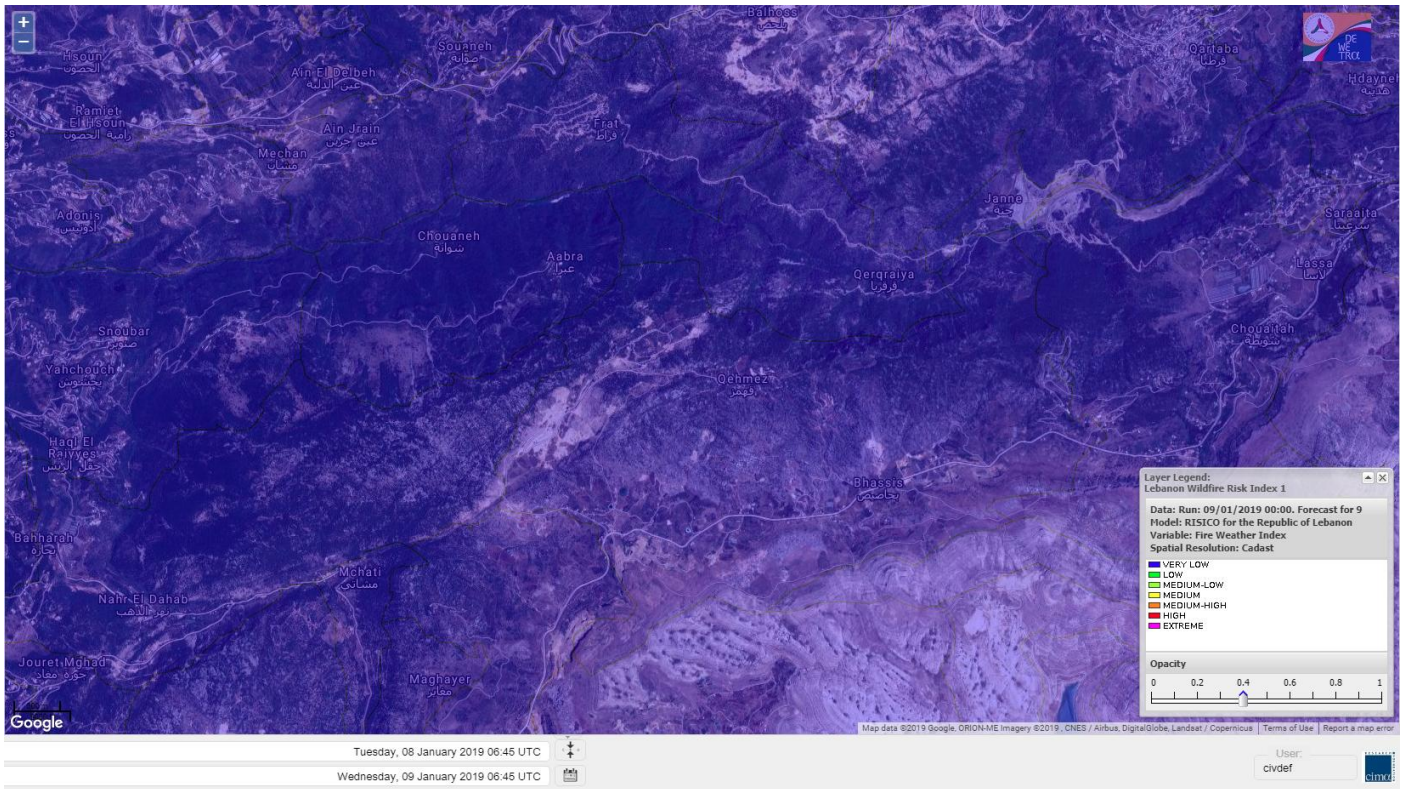
# Shouf Biosphere Reserve Forecast for 10 Jan 2019



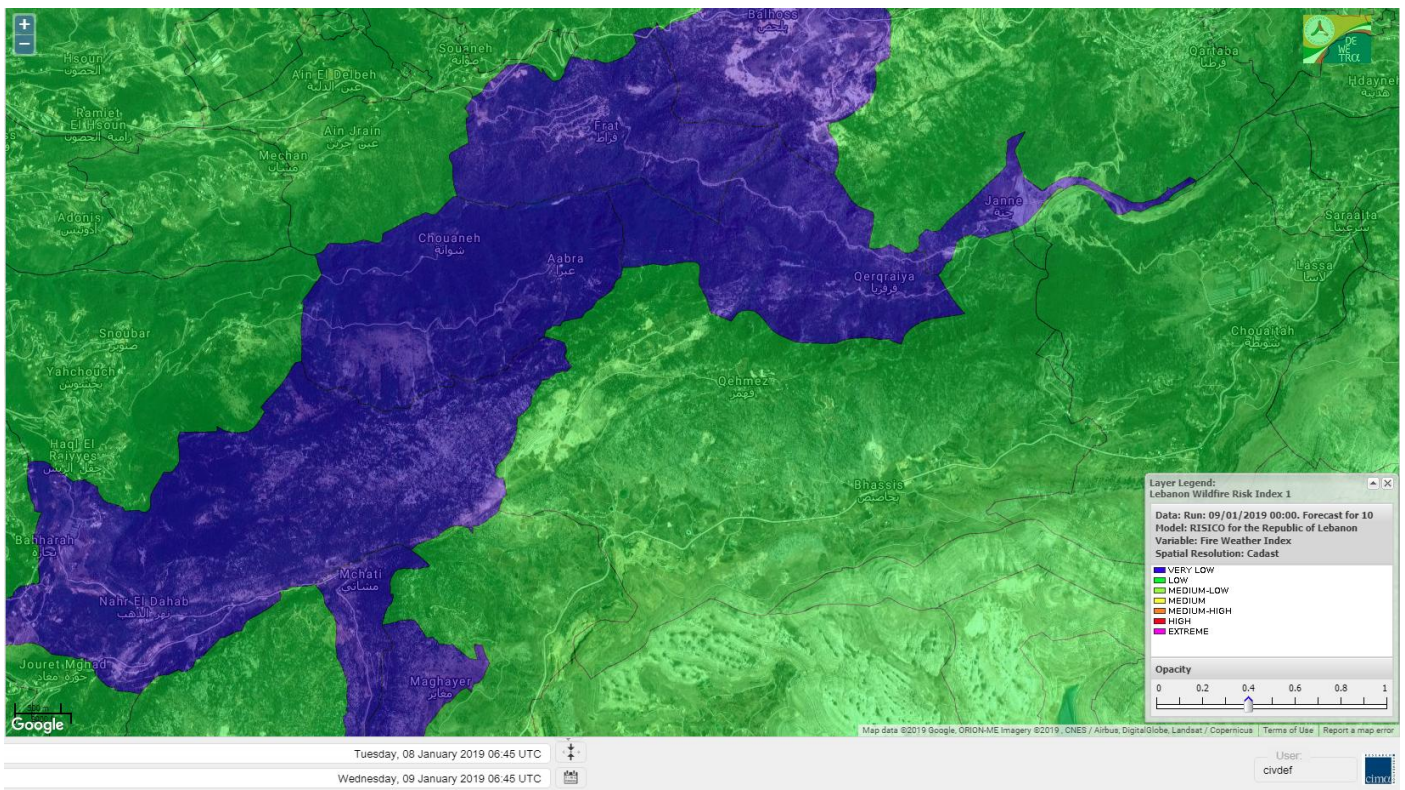
# Shouf Biosphere Reserve Forecast for 11 Jan 2019



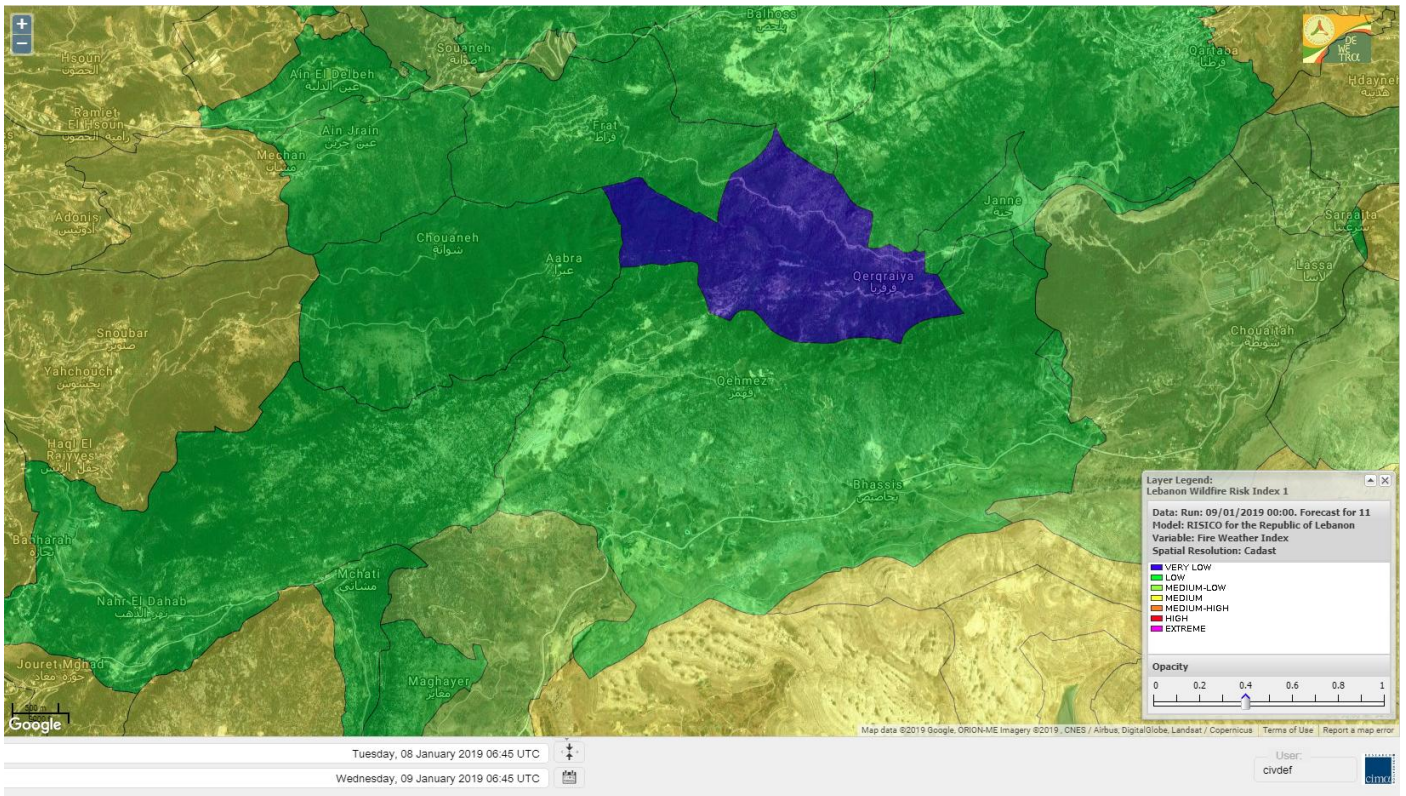
# Jabal Moussa Reserve Forecast for 9 January 2019



# Jabal Moussa Reserve Forecast for 10 Jan 2019



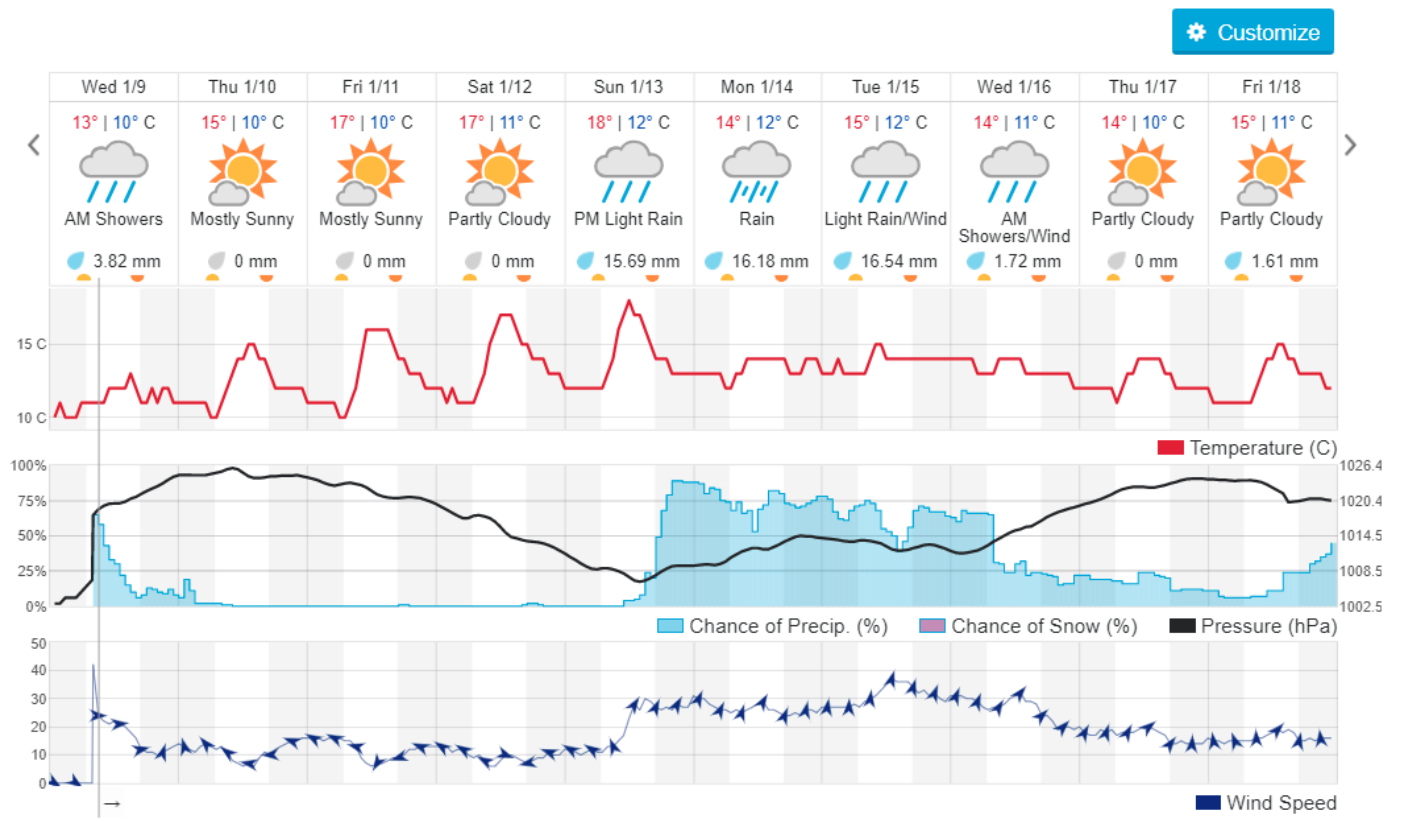
# Jabal Moussa Reserve Forecast for 11 Jan 2019



## Beirut, Lebanon

10° ACHRAFIEH,RIZK STATION | REPORT | CHANGE

TODAY HOURLY **10-DAY** CALENDAR HISTORY WUNDERMAP





## Nord

### Koura

Municipality	09-Jan	10-Jan	11-Jan	Municipality	09-Jan	10-Jan	11-Jan	Municipality	09-Jan	10-Jan	11-Jan
Aaba	L	ML	M	Afsaddiq	VL	ML	M	Ain Ekrine	VL	ML	M
Amioun	VL	L	M	Anfeh	L	M	MH	Badbhoun	L	ML	M
Barghoun	L	ML	M	Barsa	L	ML	M	Batroumine	L	M	M
Bdebba	L	ML	M	Bechmizine	VL	L	M	Bednayel El-Koura	L	ML	M
Bhabbouch El-Koura	VL	L	M	Bkeftine	L	ML	M	Bnehran	VL	L	M
Bqaiia El-Koura	L	ML	M	Bsarma	VL	L	M	Btaaboura	L	ML	M
Bterram	L	ML	M	Btouratij	L	M	M	Bziza	VL	L	M
Dar Beehtar	VL	L	M	Dar Chmezzine	VL	ML	M	Deddeh	L	M	M
Deir El-Balamand	L	L	M	Fih	L	ML	M	Hraiche	L	M	MH
Ijdaabrine	L	L	M	Kaftoun	VL	ML	M	Kefraya El-Koura	L	ML	M
Kfarakka	VL	L	M	Kfarhata	L	L	M	Kfarhazir	L	ML	M
Kfarkahel	L	ML	M	Kfarsaroun	VL	L	M	Kosba	VL	L	M
Mejdel el-Koura	VL	L	M	Nakhle	L	ML	M	Qalhat	VL	L	M
Ras Masqa	L	M	M	Rechdibbine	VL	ML	M	Zakroun	VL	ML	M
Zgharta El-Mtaouile	VL	L	ML								

### Bcharre

Municipality	09-Jan	10-Jan	11-Jan	Municipality	09-Jan	10-Jan	11-Jan	Municipality	09-Jan	10-Jan	11-Jan
Aabdine	VL	L	ML	Bane	VL	L	M	Barhelioun	VL	L	L
Bazouone	VL	L	M	Becharre	VL	L	M	Beit Menzer	VL	L	ML
Billa	VL	L	ML	Blaouza	VL	L	M	Bqaa Kafra	VL	L	M
Bqerqacha	VL	L	M	Breissat	VL	L	ML	Dimane	VL	L	ML
Hadath El Jobbeh	VL	L	ML	Hadchit	VL	L	ML	Hasroun	VL	L	M
Mazraat Aassaf	VL	VL	L	Mazraat Bani Saab	VL	L	ML	Mchaa El-Jobbeh	VL	L	M
Metrit	VL	L	M	Moghr El-Ahoual	VL	L	ML	Ouadi Qannoubine	VL	VL	VL
Qanat	VL	L	L	Qnayouer	VL	L	L	Tourza	VL	L	ML

### Batroun

Municipality	09-Jan	10-Jan	11-Jan	Municipality	09-Jan	10-Jan	11-Jan	Municipality	09-Jan	10-Jan	11-Jan
Aabrine	L	L	M	Aalali	VL	L	ML	Aartiz	VL	L	ML
Abdelli	VL	L	M	Ajdabra	VL	L	M	Assia	VL	L	L
Basbina	L	ML	M	Batroun	L	M	M	Bcheleh	VL	L	ML
Bechtoudar	VL	L	L	Beit Chlala	VL	L	L	Beit Kassab	VL	VL	L
Bijdarfil	L	ML	M	Bqesmaya	VL	L	M	Chatine	VL	L	ML
Chebtein	VL	L	M	Chekka	L	M	M	Daael	VL	L	L
Dahr Abi Yaghi	VL	L	M	Daraya El-Batroun	VL	ML	M	Deir Billa	VL	L	ML
Deir Kfifane	VL	ML	M	Deir Mar Youhanna EL	VL	VL	L	Deir Mar Youssef Jra	VL	L	M
Douma	VL	L	ML	Douq	VL	L	M	Eddeh El-Batroun	VL	L	M
Ftihat El-Batroun	VL	L	L	Ghouma	VL	L	M	Hadtoun	VL	L	ML
Hamat	VL	L	M	Harbouna	VL	L	M	Hardine	VL	VL	L
Helta	VL	VL	L	Hery	L	M	M	Jebila	VL	L	L
Jrabta El-Batroun	VL	L	M	Jrane El-Batroun	VL	ML	M	Kfar Aabida	VL	ML	M
Kfar Halda	VL	L	L	Kfarb Shlaimane	VL	VL	L	Kfarhatna	VL	L	M
Kfarhay	L	ML	M	Kfarhelos	VL	L	M	Kfifane	VL	ML	M

Kfour El Arabi	VL	L	ML	Koubba	L	ML	M	Kour	VL	L	M
Mar Mama	VL	L	L	Masrah	VL	L	M	Mehmarch	VL	L	ML
Mrah Chdid	VL	L	M	Mrah El Ziyat	VL	L	M	Mrah El-Hajj	VL	VL	L
Nahle El-Batroun	VL	L	ML	Niha El-Batroun	VL	L	ML	Ouahj El-Hajjar	L	L	M
Ouata Houb	VL	L	L	Qatnaaoun	L	L	M	Racha	VL	L	ML
Rachana	VL	L	M	Rachkida	L	L	M	Ram El-Batroun	VL	L	L
Ras Nakhach	VL	L	M	Selaata	L	ML	M	Sghar	VL	L	M
Smar Jbayl	VL	L	M	Sourat El-Batroun	VL	L	ML	Tannourine El-Faouqa	VL	L	M
Tannourine Et-Tahta	VL	L	L	Thoum	VL	ML	M	Toula El-Batroun	VL	L	M
Zan	VL	L	M								

## Zgharta

Municipality	09-Jan	10-Jan	11-Jan	Municipality	09-Jan	10-Jan	11-Jan	Municipality	09-Jan	10-Jan	11-Jan
Aachach	L	ML	M	Aalma	L	ML	M	Aarde	VL	L	M
Aintourine	VL	L	M	Arabet Qozhaya	VL	L	L	Arde	L	ML	M
Arjis	VL	L	M	Asnoun	VL	L	M	Ayto	VL	L	ML
Basloukit	VL	L	M	Bchannine	L	ML	M	Besebeel	VL	L	M
Bhairret Toula	VL	VL	ML	Bnachee	VL	L	M	Boussit	L	M	M
Danha	L	ML	M	Daraiya Zgharta	VL	L	M	Deir Jdeide	VL	L	M
Ehden	VL	L	M	Halan	L	M	M	Hariq Zgharta	VL	L	M
Houakir	VL	L	ML	Hraiqis	L	M	MH	Iaal	VL	L	M
Ijbaa	VL	L	M	Karm Saddeh	VL	L	L	Kfarchakhna	L	ML	M
Kfardlaqous	VL	ML	M	Kfarfou	VL	L	M	Kfarhata Zgharta	VL	ML	M
Kfarhoura	VL	L	M	Kfarsghab	VL	L	M	Kfaryachit	VL	L	M
Kfarzaina	VL	L	M	Khaldiye	VL	L	M	Mazraat Ajbeaa	VL	L	M
Mazraat Et-Teffah	VL	L	ML	Mazraat Jneid	VL	L	M	Mejdlaiya Zgharta	L	ML	M
Merh Kfarsghab	VL	L	M	Miryata	L	ML	M	Miziara	VL	L	L
Mzraat Kefraya	L	M	M	Qorah Bach	VL	L	M	Rachiine	VL	ML	M
Ras Kifa	VL	L	M	Sakhra	VL	L	M	Sebhel Zgharta	VL	L	M
Serhel	VL	L	L	Tallet Zgharta	VL	L	M	Toula Zgharta	VL	L	ML
Zgharta	VL	ML	M								

## Minieh-Denniye

Municipality	09-Jan	10-Jan	11-Jan	Municipality	09-Jan	10-Jan	11-Jan	Municipality	09-Jan	10-Jan	11-Jan
Aasaymout	VL	VL	L	Aaymar	VL	L	ML	Aazki	L	ML	M
Ain El-Tineh-Miniyeh	VL	L	L	Assoun	VL	L	ML	Bakhaaoun	VL	L	ML
Bchennata	VL	L	M	Bechehhara	VL	L	L	Beddawi	L	M	M
Behouaita	VL	L	L	Beit El Foqss	VL	L	L	Beit Haouik	VL	ML	ML
Beit Zoud	VL	L	L	Bekaasafrine	VL	ML	M	Borj El Yahoudiyeh	L	M	MH
Bqarsouna	VL	L	L	Btermaz	VL	L	L	Debaael	VL	L	L
Deir Ammar	L	M	MH	Deir Nbouh	VL	L	M	Haouaret-Miniyeh	VL	L	ML
Haql el Azimeh	VL	L	L	Harf El Siyad	VL	L	L	Hazmiye-Miniyeh	VL	L	L
Izal	VL	ML	M	Jarjour	VL	VL	L	Jayroun	VL	L	L
Kahf El-Malloul	VL	L	ML	Karm El-Moher	VL	L	ML	Kfar Binine	VL	L	ML
Kfarchalane	VL	ML	ML	Kfarhabou	VL	L	M	Kharroub-Miniyeh	L	ML	M
Mazraat El-Kreme	VL	L	L	Mazraat Ketrane	VL	L	L	Merkebta	L	M	M
Minyeh	L	M	MH	Mrah El Sfirat	VL	L	L	Mrah Sraj	VL	L	L
Mrebbine	VL	L	M	Nabi Youcheaa	L	M	MH	Nemrine	VL	L	ML

Qarhaiya	L	L	ML	Qarne	VL	VL	L	Qarsita	VL	L	L
Qattineh-Miniyeh	VL	VL	L	Qemmamine	VL	VL	ML	Qraine	VL	L	L
Raouda-Aadoua	L	M	M	Rihaniyet-Miniyeh	L	M	M	Sfireh	VL	L	ML
Sir Ed-Danniyeh	VL	L	L	Tarane	VL	L	ML	Terbol-Miniyeh	L	M	M
Zaghartaghriine	VL	L	M	Zouq Bhannine	L	M	M				

## Nabatiye

### Nabatiye

Municipality	09-Jan	10-Jan	11-Jan	Municipality	09-Jan	10-Jan	11-Jan	Municipality	09-Jan	10-Jan	11-Jan
Aabba	VL	M	M	Aazzi	VL	ML	M	Adchit El-Chqif	VL	M	M
Ain Bou Swar	VL	ML	M	Ain Kana	VL	ML	M	Ali El-TaHER	VL	ML	M
Ansar	VL	M	M	Arab Salim	VL	ML	M	Arnoun	VL	ML	M
Bfaroue	VL	ML	M	Breyqaah	VL	M	M	Charqiyeh	VL	M	M
Choukine	VL	M	M	Deir El Zahrani	VL	M	M	Doueir El-Nabatiyeh	VL	M	M
Habbouch El-Nabatiye	VL	ML	M	Hamra El-Nabatiyeh	VL	ML	M	Harouf El-Nabatiyeh	VL	M	M
Hmaïle	VL	ML	M	Houmin El Faouqa	VL	ML	M	Houmin El Tahta	VL	M	M
Jarjouch	VL	L	M	Jbaah El-Nabatiyeh	VL	L	M	Jebchit	VL	M	M
Kfar Djal El-Nabatiy	VL	M	M	Kfar Remmane	VL	ML	M	Kfar Sir	VL	M	M
Kfar Tebnit	VL	ML	M	Kfarfila	VL	ML	M	Kfour El-Nabatieh	VL	M	M
Mayfadoun	VL	ML	M	Mazraat Bsaffour	VL	ML	M	Mazraat Chalbaal	VL	M	M
Mazraat Dmoul	VL	M	M	Mazraat El Khreibeh	VL	ML	M	Mazraat El-Bayad El-	VL	ML	M
Mazraat Kfarjaouz	VL	ML	M	Mazraat Qalaat Meiss	VL	M	M	Nabatiyeh El-Fawka	VL	ML	M
Nabatiyeh Et-Tahta	VL	ML	M	Namiriyeh	VL	M	M	Qaaqaaiyet El Jisr	VL	M	M
Qossaibeh El-Nabatiy	VL	M	M	Roumine	VL	ML	M	Sarba El-Nabatieh	VL	ML	M
Sir El-Gharbiyeh	VL	M	M	Toul	VL	M	M	Yehmor El-Nabatiyeh	VL	ML	M
Zaoutar El Charqiyeh	VL	ML	M	Zaoutar El-Gharbiyeh	VL	M	M	Zebdine El-Nabatiyeh	VL	M	M
Zefta	VL	ML	M								

### Hasbaiya

Municipality	09-Jan	10-Jan	11-Jan	Municipality	09-Jan	10-Jan	11-Jan	Municipality	09-Jan	10-Jan	11-Jan
Aain Jarfa	VL	L	ML	Abou Qamha	VL	L	M	Ain Qania	VL	L	M
Bourghos	VL	ML	M	Chebaa	VL	L	M	Chouaya Hasbaya	VL	L	M
Dellafeh	VL	ML	M	Fardiss Hasbaiya	VL	L	M	Hasbaya	VL	L	M
Hbariyeh	VL	L	ML	Kaoukaba Hasbaiya	VL	L	M	Kfar Chouba	VL	L	ML
Kfar Hamam	VL	L	ML	Kfeir El-Zait	VL	L	ML	Khalwat Hasbaya	VL	L	L
Khreibet Hasbaiya	VL	L	M	Majidiyeh Hasbaiya	VL	ML	M	Marj Ez-Zhour (Haouc	VL	L	ML
Meri	VL	ML	M	Mimass	VL	L	M	Rachaiya El-Fokhar	VL	L	ML
Salaiyeb	VL	ML	M								

### Marjayoun

Municipality	09-Jan	10-Jan	11-Jan	Municipality	09-Jan	10-Jan	11-Jan	Municipality	09-Jan	10-Jan	11-Jan
Aalmane Marjaayoun	VL	L	M	Aamra	VL	ML	M	Adayseh Marjaayoun	VL	M	M
Adchit El-Koussair	VL	ML	M	Ain Aarab Marjaayoun	VL	ML	M	Bani Haiyann	VL	ML	M
Blatt Marjaayoun	VL	L	M	Blida	VL	M	M	Borj El-Moulouk	VL	ML	M
Boueyda Marjaayoun	VL	L	M	Deir Mimass	VL	L	M	Deir Siriane	VL	ML	M
Dibbine	VL	ML	M	Ebel El Saqi	VL	L	M	Houla	VL	M	M
Houra	VL	ML	M	Kfar Kila	VL	ML	M	Khiam Marjaayoun	VL	ML	M

Klayaa	VL	ML	M	Majdel Selem	VL	M	M	Marjaayoun	VL	ML	M
Markaba	VL	M	M	Mays El-Jabal	VL	M	M	Mazraat Doumiat	VL	ML	M
Mazraat Sarada	VL	ML	M	Mhaibib	VL	M	M	Qabrikha	VL	ML	M
Qantara	VL	ML	M	Rab El-Thalathine	VL	M	M	Saouaneh Marjayoun	VL	M	M
Talloussa	VL	ML	M	Taybeh Matjaayoun	VL	ML	M	Touline	VL	ML	M

## Bent Jbail

Municipality	09-Jan	10-Jan	11-Jan	Municipality	09-Jan	10-Jan	11-Jan	Municipality	09-Jan	10-Jan	11-Jan
Ain-Ebel	L	M	M	Aitaroun	VL	ML	M	Aynata Bint Jbeil	VL	M	M
Ayta El-Chaeb	VL	ML	M	Ayta El-Jabal	VL	M	M	Beit Lif	VL	ML	M
Beit Yahoun	L	M	M	Bint Jbeil	L	M	M	Borj Qalaway	VL	M	M
Braachit	L	M	M	Chakra	VL	M	M	Debel	L	M	M
Deir Antar	L	M	M	Froun	VL	ML	M	Ghandouriyeh Bint Jb	VL	M	M
Hanine	L	M	M	Hariss	L	M	M	Hdatha	L	M	M
Jmeyjme	L	M	M	Kafra Bint Jbeil	VL	ML	M	Kfar Dounine	L	M	M
Khirbet Selm	VL	ML	M	Kounine	VL	M	M	Maroun El Ras	L	M	M
Qalaway	VL	M	M	Qaouzah	VL	ML	M	Qatmoun	L	M	M
Ramya Bint Jbeil	VL	ML	M	Rchaf	VL	ML	M	Rmeich	VL	M	M
Safad Al Battikh	L	M	M	Salhaneh	VL	ML	M	Serbine	VL	M	M
Sultanieh Bint Jbeil	L	M	M	Tibnine	VL	M	M	Tiri	L	M	M
Yaroun	VL	M	M	Yater	VL	M	M				

## Mont Liban

### Jbail

Municipality	09-Jan	10-Jan	11-Jan	Municipality	09-Jan	10-Jan	11-Jan	Municipality	09-Jan	10-Jan	11-Jan
Aabeydat	VL	L	M	Aalita	VL	L	M	Aamchit	VL	M	MH
Aarab El-Lahib	VL	L	M	Aarasta	VL	VL	L	Adonis Jbeil	VL	L	M
Afqa Jbeil	VL	L	L	Ain El Delbeh Jbeil	VL	L	L	Ain El-Ghouayba	VL	L	ML
Ain Jrain	VL	L	L	Ain Kfah	VL	ML	M	Almat El Chemaliyat	VL	L	L
Almat El-Jenoubiya	VL	L	L	Aqoura	VL	L	M	Bayzoun	VL	L	M
Bchille Jbeil	VL	L	M	Bechtlida	VL	VL	L	Behdaydat	VL	L	M
Beit Habbaq	VL	L	M	Bejjeh	VL	L	M	Bekhaaz	VL	ML	M
Berbara Jbeil	VL	M	M	Bintael	VL	L	M	Birket Hjoula	VL	L	ML
Blatt Jbeil	VL	L	M	Boulhos	VL	VL	L	Breyj Jbeil	VL	L	ML
Chamat	VL	ML	M	Chikhane	VL	M	M	Chmout	VL	L	M
Eddeh Jbeil	VL	ML	M	Ehmej	VL	L	ML	Fatre	VL	L	M
Ferhet	VL	L	M	Fghal	VL	L	M	Frat	VL	VL	L
Ghabat	VL	L	M	Ghalboun	VL	L	M	Gharzouz	VL	ML	M
Ghofrine	VL	ML	M	Habil	VL	VL	ML	Halate	VL	L	M
Haqel	VL	L	M	Hbaline	VL	ML	M	Hboub	VL	L	M
Hdeine	VL	L	M	Hema Er-Rehban	VL	L	M	Hema Mar Maroun Aann	VL	L	M
Hjoula	VL	L	M	Hosrayel	VL	ML	M	Hsarat	VL	ML	M
Hsoun	VL	L	M	Jaj	VL	L	ML	Janne	VL	VL	L
Jbeil	VL	ML	MH	Jeddeyl Jbeil	VL	ML	M	Jlisse	VL	L	ML
Jouret El-Qattine	VL	L	M	Kfar Baal Annaya	VL	L	M	Kfar Kidde	VL	ML	M
Kfar Kouas	VL	L	M	Kfar Mashoun	VL	ML	M	Kfoun	VL	L	M

Kharbe Jbeil	VL	L	M	Laqlouq	VL	L	M	Lassa	VL	L	ML
Lehfed	VL	L	L	Maad	VL	ML	M	Mar Sarkis	VL	L	M
Mastita	VL	ML	M	Mayfouq	VL	L	L	Mazraat El Siyad	VL	L	M
Mazraat El-Maaden	VL	VL	L	Mechane	VL	L	M	Mechmech Jbeil	VL	L	L
Mehrin	VL	L	M	Mejdel El-Akoura	VL	L	ML	Mghayreh Jbeil	VL	L	M
Mounsef	VL	M	M	Nahr Ibrahim	VL	ML	M	Qahmez	VL	L	L
Qartaba	VL	L	L	Qartaboun	VL	M	MH	Qattara Jbeil	VL	VL	L
Qorqraya	VL	VL	VL	Ramout	VL	L	M	Ras Osta	VL	L	M
Rihane Jbeil	VL	M	M	Sakiet El-Khayt	VL	L	M	Saqi Richmaya	VL	L	ML
Sebrine	VL	L	M	Seraita	VL	L	ML	Souane Jbeil	VL	L	ML
Tadmor	VL	L	M	Tartej	VL	L	ML	Torzaiya	VL	L	M
Yanouh Jbeil	VL	L	M	Zibidine Jbeil	VL	L	M				

## El Metn

Municipality	09-Jan	10-Jan	11-Jan	Municipality	09-Jan	10-Jan	11-Jan	Municipality	09-Jan	10-Jan	11-Jan
Aain El-Qabu	VL	VL	L	Aain El-Qach	VL	L	M	Aain El-Teffaha	VL	L	M
Aain el-Safssaf El-M	VL	L	M	Abou Mizane	VL	L	M	Ain Aar	VL	ML	M
Ain Alaq	VL	L	M	Ain El-Kharroube	VL	L	M	Ain El-Sendianeh	VL	L	M
Ain El-Zeitoune	VL	L	M	Ain Saadeh	VL	L	M	Aintoura El-Matn	VL	L	M
Amaret Chalhoub	VL	ML	MH	Antelias	VL	ML	MH	Atchaneh	VL	L	M
Ayroun	VL	L	M	Baabdat	VL	L	M	Baouchariyeh	L	M	MH
Baskinta	VL	L	ML	Beit Chabab	VL	L	M	Beit El-Chaar	VL	ML	MH
Beit El-Kekko	VL	ML	MH	Beit Mery	VL	L	M	Bhersaf	VL	L	M
Bikfaya	VL	L	M	Biyakout	VL	ML	MH	Bnabil	VL	L	M
Bourj Hammoud	L	M	MH	Bqennaya	VL	L	M	Broummana El-Matn	VL	L	M
Bsalim	VL	L	M	Bsifrine	VL	VL	M	Bteghrine	VL	L	ML
Chaouiye	VL	L	M	Chouaya El-Matn	VL	L	M	Choueir	VL	L	M
Chrine	VL	L	M	Dahr El Sawan El-Mat	VL	L	M	Daychouniyeh	VL	ML	M
Dbayeh	VL	ML	MH	Deir Chamra	VL	L	ML	Deir Mar Abda el Mch	VL	L	M
Deir Mar Roukouz	L	M	MH	Deir Tamiche	VL	L	M	Dik El-Mehdi	VL	L	M
Dikwaneh	L	M	MH	Douar El-Matn	VL	L	M	Fanar	VL	L	M
Fraike	VL	L	M	Haret El-Ballaneh	VL	L	M	Hbous	VL	ML	M
Himlaya	VL	L	M	Jal El Did	VL	ML	MH	Jdeideh El-Metn	VL	ML	MH
Jouar El-Matn	VL	L	M	Jouret El-Ballout	VL	L	M	Kaaqour	VL	L	M
Kfar Aaqab	VL	L	M	Kfertay El-Matn	VL	VL	ML	Khenchara	VL	L	M
Khillat El-Mtain	VL	L	M	Konnabat Broummana	VL	L	M	Konnabat Salima	VL	VL	ML
Machraah El-Matn	VL	L	ML	Majdel Tarchich	VL	L	M	Majzoub	VL	ML	M
Mansouriyeh El-Metn	VL	M	MH	Mar Boutros Karm Et-	VL	L	M	Mar Chaya et Mzekke	VL	L	M
Mar Moussa Ed-Douar	VL	L	M	Marjaba	VL	L	M	Masqa	VL	L	M
Mayasse	VL	L	M	Mazraat Deir Aoukar	VL	ML	M	Mazraat El-Hadirat	VL	L	M
Mazraat Yachouh	VL	ML	M	Mchikha	VL	L	M	Menqlet Mezher	VL	ML	M
Mhaydseh Matn	VL	L	M	Mkalles	L	M	MH	Mrouj	VL	L	M
Mtain	VL	L	M	Mtayleb	VL	L	M	Nabay	VL	L	M
Naccache	VL	ML	M	Ouadi Chahine	VL	L	M	Ouadi El-Karm El-Mat	VL	VL	ML
Ouata El-Mrouj	VL	L	M	Ouyoun El-Matn	VL	VL	M	Qornet Chehwan	VL	L	M
Qornet El-Hamra	VL	L	M	Roumieh	VL	L	M	Sfeilet Bikfaya	VL	L	M
Sinn El-Fil	L	M	MH	Zabbougha	VL	VL	ML	Zalqa	VL	ML	MH

Zarououn	VL	L	M	Zekrite	VL	L	M	Zighrine El-Matn	VL	L	M
Zouk El-Khrab	VL	ML	M								

## Chouf

Municipality	09-Jan	10-Jan	11-Jan	Municipality	09-Jan	10-Jan	11-Jan	Municipality	09-Jan	10-Jan	11-Jan
Aalmane El-Chouf	L	M	M	Aammiq El-Chouf	VL	L	ML	Ain Ouzein	VL	L	L
Ain Qani	VL	L	ML	Ain Zhalta	VL	L	ML	Ainbal	VL	L	ML
Amatour	VL	L	ML	Anout	VL	L	M	Atrine	VL	L	ML
Baadarane	VL	L	M	Baaqline	VL	L	M	Baasir	L	M	M
Barja	L	M	M	Barouk	VL	L	L	Bater	VL	L	M
Batloun	VL	L	M	Bayqoun	VL	ML	M	Bchetfine	VL	L	M
Beiteddine	VL	L	ML	Benouati Ech-Chouf	VL	L	ML	Berjein	VL	L	ML
Bireh et Mtalleh	VL	L	M	Biret El-Chouf	VL	L	M	Bkechtine Ouel Mchei	VL	L	L
Bkifa El-Chouf	VL	L	ML	Botme	VL	L	L	Bqaiaa Ech-Chouf	VL	L	ML
Bsaba El-Chouf	VL	L	M	Chammis El-Chouf	L	ML	M	Chehim	VL	L	ML
Chemaarine	VL	L	L	Chourit	VL	L	ML	Daher El-Chouf	L	L	M
Dalhoun	L	ML	M	Damour	L	ML	M	Daraya El-Chouf	VL	L	ML
Deir El-Moukhalles	VL	L	ML	Deir Baba	VL	L	ML	Deir Dourit	VL	L	ML
Deir El-Qamar	VL	L	ML	Deir Kouche	VL	L	ML	Dibbieh	VL	L	L
Dmit	VL	L	ML	Fouara Jaafar	VL	L	ML	Fraidis El-Chouf	VL	L	M
Ghabet Jaafar	VL	L	M	Gharife	VL	L	ML	Haret Jandal	VL	L	M
Hasrout	VL	L	M	Jadra	L	M	M	Jahlieh	VL	L	ML
Jbeih El-Chouf	VL	L	M	Jdeidet El-Chouf	VL	L	ML	Jiyeh	L	M	M
Jleilyeh	VL	L	M	Jmailiyeh	L	ML	M	Joun	L	ML	M
Kahlounie El-Chouf	VL	ML	M	Ketermaya	L	M	M	Kfar Faqoud	VL	L	ML
Kfar Hamal	VL	ML	M	Kfar Him	VL	L	M	Kfar Katra	VL	L	ML
Kfar Niss	VL	ML	M	Kfar hay	VL	L	M	Kfarnabrakh	VL	L	M
Khirbet Bisri	VL	L	ML	Knayse El-Chouf	VL	L	L	Maaniyeh	L	ML	M
Maasser Beiteddine	VL	L	ML	Maasser El-Chouf	VL	L	ML	Majdalouna	L	ML	M
Majdel El-Meouch	VL	L	M	Mazboud	VL	L	M	Mazmoura	VL	L	M
Mazraat El Chouf	VL	L	M	Mazraat El Daher	VL	L	ML	Mazraat El-Douair	VL	L	L
Mechref	VL	L	ML	Mghairie	L	M	M	Mghayrie El-Chouf	VL	L	ML
Moukhtara	VL	L	ML	Mrusti	VL	L	M	Mtolle	VL	L	M
Naameh	L	M	M	Niha El-Chouf	VL	L	M	Ouadi Abou Youssef	VL	VL	L
Ouadi Ed-Deir	VL	L	M	Ouadi El-Sit	VL	L	M	Ouadi bnehlay	VL	L	ML
Qraibeh	VL	L	M	Qreiaa	VL	VL	L	Rmayle El-Chouf	L	M	M
Semqaniyeh	VL	ML	M	Sibline	L	M	M	Sirjbeil	VL	L	M
Warhanieh	VL	L	M	Werdaniyeh	L	M	M	Zaarourieh	VL	L	M

## Baabda

Municipality	09-Jan	10-Jan	11-Jan	Municipality	09-Jan	10-Jan	11-Jan	Municipality	09-Jan	10-Jan	11-Jan
Abadiyeh	VL	L	M	Ain Mouaffaq	VL	L	M	Araiya	VL	L	M
Arbaniyeh	VL	L	M	Arsoun	VL	L	M	Baabda	L	M	M
Baalchmey	VL	ML	M	Bmaryam	VL	L	M	Bourj El-Brajneh	L	M	MH
Boutchay	L	M	M	Bsaba Baabda	L	M	MH	Btekhney	VL	L	M
Btibyat	VL	L	M	Bzbeddine	VL	L	M	Chbeniyeh	VL	L	M
Chiyah	L	M	MH	Chmeisset Baabda	VL	VL	M	Chouit	VL	L	M
Deir El-harf	VL	L	M	Deir Khouna	VL	L	M	Dlaybeh	VL	L	M

Falougha	VL	L	M	Furn El-Chebbak	L	M	MH	Hadath Beyrouth	L	M	MH
Halaliyeh Baabda	VL	L	M	Hammana	VL	L	M	Haret El Sett	VL	L	M
Haret Hamze	VL	L	M	Haret Hreik	L	M	MH	Hasbaiya El-Metn	VL	L	M
Jouar El-Hoz	VL	L	ML	Jouret Arsoun	VL	L	M	Kfar Chima	L	M	MH
Kfar Selouane	VL	L	ML	Khalouat Baabda	VL	ML	M	Kneisset Baabda	VL	L	M
Laylakeh	L	M	MH	Louayzeh Baabda	VL	ML	M	Merdache	L	M	MH
Mzairaa Baabda	VL	L	M	Ouadi Chahrour El Ol	L	ML	M	Ouadi Chahrour El So	L	ML	M
Qalaa Baabda	VL	L	M	Qhraybe Baabda	VL	L	M	Qobbayaa	VL	L	M
Qornayel	VL	L	M	Qortada	VL	VL	M	Qrayeh Baabda	VL	L	M
Qsaibeh Baabda	VL	L	M	Qtale Baabda	VL	L	M	Ras El Metn	VL	L	M
Ras El-Haref	VL	L	M	Rouayset El-Ballout	VL	L	M	Salima Baabda	VL	L	M
Tahouitat El Ghadir	L	M	MH	Tarchich	VL	L	ML	Zandouqa	VL	VL	M

## Aley

Municipality	09-Jan	10-Jan	11-Jan	Municipality	09-Jan	10-Jan	11-Jan	Municipality	09-Jan	10-Jan	11-Jan
Abey	VL	L	M	Aghmid	VL	L	M	Ain Dara	VL	L	M
Ain Drafil	VL	L	M	Ain El Halazoun	VL	ML	M	Ain El-Rmmaneh	VL	L	M
Ain Jedideh	VL	ML	MH	Ain Ksour	VL	ML	M	Ain Onoub	L	M	M
Ain Traz	VL	L	M	Ainab	L	ML	M	Aley	VL	ML	MH
Aramoun	L	M	M	Aytat	L	M	MH	Azouniyeh	VL	L	M
Baawerta	VL	L	M	Badghan Oua Wadi Bad	VL	L	M	Bassatine	L	M	M
Bayssour	VL	ML	M	Bchamoun	L	M	M	Bdadoun	VL	L	M
Behouara	VL	L	M	Bennay	VL	L	M	Bhamdoun El-Dayaa	VL	ML	MH
Bhamdoun El-Mhatta	VL	ML	MH	Bkhechey	VL	ML	MH	Bleibel	VL	ML	M
Bmakine	VL	ML	MH	Bmehray	VL	L	M	Bouzrid	VL	L	M
Bserrine	VL	ML	MH	Bsous	VL	L	M	Btalloun	VL	ML	MH
Btater	VL	ML	MH	Chanay	VL	ML	MH	Charoun	VL	L	M
Chartoun	VL	L	M	Chemlane	L	M	M	Choueifat El-Aamrous	L	M	MH
Choueifat El-Oumara	L	M	MH	Choueifat El-Quoubbe	L	M	MH	Dakkoun	VL	L	M
Deir Qoubel	L	ML	M	Dfoun	L	M	M	Douair El Remmaneh	VL	L	M
Ghaboun	VL	L	M	Habramoun	VL	L	M	Homs Oua Hama	VL	L	M
Houmal	L	ML	M	Jisr El Qadi	VL	L	ML	Kehaleh	VL	L	M
Keyfoun	L	M	MH	Kfar Aamey	VL	L	M	Kommatyeh	VL	L	M
Maasrati	VL	L	M	Majdel Baana	VL	ML	M	Mansourieh et Ain El	VL	ML	MH
Mazraat El-Nahr	VL	L	M	Mchakhte	VL	L	M	Mecherfeh	VL	L	M
Mejdlaya	VL	L	M	Mrayjat	VL	ML	M	Ramliyah	VL	L	M
Rechmaya	VL	L	M	Rejmeh	VL	L	M	Remhala	VL	ML	M
Rouaysset El Neemane	VL	L	M	Saoufar	VL	L	M	Selfaya	VL	L	ML
Sirhmoul	VL	ML	M	Souq El Ghareb	VL	ML	M	Taazanieh	VL	ML	MH

## Kesrouane

Municipality	09-Jan	10-Jan	11-Jan	Municipality	09-Jan	10-Jan	11-Jan	Municipality	09-Jan	10-Jan	11-Jan
Achkout	VL	L	M	Adma Oua Dafneh	VL	ML	M	Ain Ed-Delbe Kesroua	VL	VL	L
Ain El-Rihane	VL	L	M	Aintoura Kesrouane	VL	L	M	Ajaltoun	VL	L	M
Akaybeh Kesrouane	VL	M	MH	Aramoun Kesrouane	VL	L	M	Azra ouel Ozor	VL	L	M
Ballouneh	VL	L	M	Batha	VL	VL	M	Bekaatat Achkout	VL	L	M
Bekaatat Kanaan	VL	L	L	Bizhel	VL	L	M	Bouar	VL	L	M
Bqaatouta	VL	L	ML	Bqaq Ed-Dine	VL	ML	M	Bzommar	VL	L	M

Chahtoul	VL	L	M	Chnaniir	VL	L	M	Chouan	VL	VL	L
Daraya Kesrouane	VL	L	M	Darououn	VL	L	M	Deir Baqlouch	VL	L	M
Dlebta	VL	VL	M	Eghbeh	VL	VL	L	Faraya	VL	L	M
Fatka	VL	L	M	Feytroun	VL	L	M	Ghazir	VL	L	M
Ghbaleh Kesrouane	VL	L	M	Ghedrass	VL	L	M	Ghosta	VL	L	M
Ghynéh	VL	L	M	Harharaya w Kattine	VL	L	M	Harissa Kesrouane	VL	L	M
Hayata	VL	L	M	Hosein	VL	L	M	Hrajel	VL	L	M
Jdeideh Ghazir	VL	L	M	Jeita	VL	L	M	Jounieh Ghadir	VL	ML	M
Jounieh Haret Sakhr	VL	ML	MH	Jounieh Salel Alma	VL	ML	M	Jounieh Sarba	VL	M	MH
Jouret Bedrane	VL	L	M	Jouret Mhad	VL	L	M	Jouret Termos	VL	L	M
Kfar Debiane	VL	L	ML	Kfar Tay Kesrouane	VL	VL	ML	Kfar Yassine	VL	M	MH
Kfour Kesrouane	VL	L	M	Kharayeb Nahr Ibrahi	VL	L	M	Klayaat Kesrouane	VL	L	M
Maarab	VL	VL	ML	Maaysra Kesrouane	VL	L	M	Mayrouba	VL	L	ML
Mazraat Er-Ras	VL	ML	M	Mazraat Mrah El-Mir	VL	L	M	Mchaa El Ftouh	VL	L	M
Mchaa Faraya	VL	L	M	Mchaa Kfar Dibiane	VL	L	M	Mghaer	VL	VL	L
Mradiyah	VL	VL	M	Nahr Ed-Dahab	VL	VL	L	Nammoura Kesrouane	VL	L	M
Ouata El Jaouz	VL	L	M	Ouata Sillam	VL	M	MH	Raachine	VL	L	M
Rayfoun	VL	L	M	Safra Kesrouane	VL	ML	M	Shayle Kesrouane	VL	L	M
Tabarja	VL	L	M	Yahchouch	VL	L	M	Zaaytreh	VL	L	M
Zeytoun	VL	L	M	Zouk Mikael	VL	M	MH	Zouk Mosbeh	VL	ML	MH

## Baalbek\_Hermel

### Baalbek

Municipality	09-Jan	10-Jan	11-Jan	Municipality	09-Jan	10-Jan	11-Jan	Municipality	09-Jan	10-Jan	11-Jan
Aadous	L	ML	M	Aamchki	L	L	M	Aarsal	L	VL	M
Ain Baalbek	L	VL	M	Ain Bourday	L	ML	M	Ain El-Benye	L	L	M
Ain El-Jaouz Baalbek	L	L	M	Ain El-Siya Chadoura	L	L	M	Al Khodr Baalbek	VL	L	M
Al Nabi Chit	VL	L	M	Aynata Baalbek	VL	L	M	Baalbek	L	ML	M
Bachwat	VL	L	ML	Barqa	VL	VL	L	Bednayel Baalbak	VL	ML	M
Beit Chama	VL	L	M	Bijjaje	L	VL	M	Bouday	VL	L	ML
Brital	L	ML	M	Btadi	VL	L	ML	Chaat	L	L	M
Chaibe	L	L	M	Chlifa	L	L	M	Chmestar	VL	L	M
Dar El-Oussa	VL	L	ML	Deir El-Ahmar	VL	L	M	Deir Mar Maroun Baal	L	M	M
Douris	L	ML	M	Fakiha	L	L	M	Hadath Baalbek	L	L	M
Ham	L	ML	M	Haour Taala	L	ML	M	Hizzine	L	ML	M
Hlebta	VL	L	M	Hosh Barada	L	ML	M	Hosh El Dahab	L	ML	M
Hosh El Snid	VL	ML	M	Hosh El-Nabi	VL	L	M	Hosh El-Rafiq	VL	L	M
Hosh Tal Safiya	L	ML	M	Hrebta	VL	L	M	laat	L	ML	M
Jebaa	VL	L	M	Jenta	VL	L	M	Kfar Dabach	VL	L	M
Kfar Dane	L	ML	M	Khraibeh El-Hermel	VL	VL	ML	Khreibet Baalbek	L	ML	M
Kneisset Baalbek	VL	ML	M	Labueh	L	VL	M	Maarboun	L	L	M
Majdaloun	L	ML	M	Maqneh	VL	ML	M	Mazraat Beit Mcheik	VL	ML	M
Misraya	VL	L	M	Mograq	L	L	M	Nabha El-Damdoum	VL	L	M
Nabi Chbay	L	ML	M	Nabi Osman	L	L	M	Nahleh baalbek	VL	L	M
Ouadi El-Oss	VL	L	ML	Qaa Baayoun	L	M	M	Qaa Jouar Maqiye	L	M	M
Qaa Ouadi El-Khanzir	L	M	M	Qah Baalbek	L	M	M	Qarha Baalbek	VL	L	M



Qsarnaba	VL	L	M	Ram Baalbek	VL	L	M	Ras Baalbek El Sahl	L	M	M
Ras Baalbek El-Charq	L	M	M	Riha	VL	L	M	Saaide	L	ML	M
Sboubba	L	VL	M	Seriine El-Tahta	VL	ML	M	Slouqi	VL	L	M
Taiba Baalbek	L	ML	M	Talia	L	ML	M	Taraiya	VL	L	M
Temnin El Fawqa	VL	L	M	Temnin El-Tahta	VL	L	M	Tfail	L	VL	M
Yahfoufa	VL	ML	M	Yammouneh	VL	L	M	Younine	L	L	M
Zboud	L	L	M								

## Hermel

Municipality	09-Jan	10-Jan	11-Jan	Municipality	09-Jan	10-Jan	11-Jan	Municipality	09-Jan	10-Jan	11-Jan
Charbine El-Hermel	VL	L	M	Hermel Jbab	VL	ML	M	Hermel	L	M	M
Maaysra El-Hermel	VL	L	M	Michaa Mrajhine	VL	ML	M	Ouadi Faara	VL	L	M
Ras Baalbek - Ouadi	L	M	M	Ras Baalbek El Gharb	VL	L	M	Zighrine	VL	L	M

## Akkar

### Akkar

Municipality	09-Jan	10-Jan	11-Jan	Municipality	09-Jan	10-Jan	11-Jan	Municipality	09-Jan	10-Jan	11-Jan
Aain Tinta	ML	M	M	Aaiyat	L	M	M	Aakkar El-Aatiqa	L	L	ML
Aamar Akkar	L	M	M	Aamar El Baykat	ML	M	M	Aamayer	M	M	M
Aamriyet Akkar	M	M	M	Aandqet	L	ML	M	Aarmeh	L	ML	M
Aarqa	L	M	M	Aawaynat	M	M	M	Aayoun Akkar	L	ML	M
Abboudiye	L	M	M	Ain El-Zeit	M	M	M	Ain Yaaqoub	L	L	M
Akroum	L	ML	M	Aridet Cheikh Zennad	ML	M	MH	Baldeh w Mazraat Bal	L	M	M
Barcha	L	M	M	Bardeh	M	M	M	Bebnine	L	M	M
Beino	L	M	M	Beit Ayoub	L	M	M	Beit El-Haouch	L	M	M
Beit Mellat	L	M	M	Beit Younes	L	ML	ML	Berbara Akkar	ML	M	M
Berqayel	L	M	M	Bezbina	VL	L	L	Bireh Akkar	M	M	M
Borj	L	M	M	Bqerezla	L	M	M	Bzal	L	L	M
Chane	L	L	ML	Chaqdouf	L	M	M	Charbila	L	M	M
Cheikh Mohammad	L	M	M	Cheikh Taba Es-Sahl	L	M	M	Cheikh Taba	L	M	M
Cheikh Zennad	ML	M	MH	Cheikhlar	M	M	M	Chir Hmairine	L	M	M
Daghle	ML	M	M	Dahr Laissine	L	M	M	Darine	L	M	M
Dawra	L	L	M	Dawsa w Baghdadi	M	M	M	Dayret Nahr El-Kabir	M	M	M
Deir Dalloum	L	M	M	Deir Jennine	ML	M	M	Denbou	L	L	ML
Dibbabiyyeh	M	M	M	Douair Aadwiyeh	M	M	M	Fassikine	M	M	M
Fnaydek	L	L	ML	Fraydes Akkar	ML	M	M	Ghazayle	L	M	M
Habchit	VL	L	L	Hakour	L	M	M	Halba	L	M	M
Haouchab	L	M	M	Hayssat	L	M	MH	Haytla	L	M	M
Hayzouq	L	M	M	Hedd	L	M	M	Hmaira Akkar	L	M	M
Hmaiss Akkar	L	M	M	Hnaider	M	M	M	Hokr Ed-Dahri	ML	M	MH
Hokr Etti	L	M	M	Hokr Jouret Srar	L	M	M	Houaich	L	ML	M
Hrar	L	ML	M	Idbil	L	M	M	Ilal	L	M	M
Janine	L	M	M	Jdeidet El-Joumeh	L	M	M	Jdeidet El-Kaiteh	L	M	M
Jebayel	L	M	M	Kafr	VL	L	M	Kafr	M	M	M
Karm Asfour	L	M	M	Kfar Melki Akkar	L	M	MH	Kfar Noun	ML	ML	M
Kfarharra	L	M	M	Khalsa	M	M	M	Kharnoubet Akkar	L	M	M

Khirbet Daoud Aakkar	M	M	M	Khirbet El Remmane	M	M	M	Khirbet Shar	ML	M	M
Khoreybet El-Jindi	L	M	M	Khreibet Aakkar	L	M	M	Kneisset Aakkar	ML	M	MH
Kneisset Hnaider	M	M	M	Knisse	L	M	M	Kroum El-Aarab	L	M	M
Kwachra	M	M	M	Kweykhat	L	M	M	Machta Hammoud	M	M	M
Majdala	L	M	M	Majdel Akkar	M	M	M	Mar Touma	L	M	M
Marlaya Melhem	L	M	M	Mashha	L	M	M	Massoudiye	L	M	MH
Mazraat Beit Ghattas	L	M	M	Mazraat En-Nahriye	ML	M	M	Mechmech	VL	L	ML
Memneh	VL	L	L	Mhammara	L	M	M	Mighraq Aakkar	ML	M	MH
Minyara	L	M	M	Moqayteh	ML	M	MH	Mounjez	ML	M	M
Msalla	M	M	M	Mzeihmeh	L	M	M	Nfaiseh	L	M	M
Noura Et-Tahta	M	M	M	Ouadi El-Haour	L	M	M	Ouadi El-Jamous	L	M	M
Ouyoun El-Ghizlane	L	M	M	Qaabarine	L	M	MH	Qabaait	L	L	ML
Qachlaq	L	M	M	Qantara Aakkar	L	M	M	Qarha Aakkar	M	M	M
Qarqaf	L	M	M	Qboula	L	M	M	Qleiaat Aakkar	ML	M	MH
Qloud El-Baqie	L	M	M	Qobaiyat Aakkar	L	ML	ML	Qobbat Chamrat	L	M	M
Qorayat	L	ML	M	Qornet Aakkar	L	ML	M	Qsair Aakkar	M	M	M
Rahbe	L	ML	M	Rihaniyet Aakkar	L	M	M	Rmah	M	M	M
Rmoul	L	M	MH	Saadine	L	M	M	Sadaqa	L	M	M
Saidnaya	L	M	M	Sammouniye	L	M	MH	Sayssouq	L	M	M
Semmaqiye	ML	M	MH	Semmaqli	L	M	M	Sfinet El-Dreib	L	M	M
Sfinet El-Qaitaa	L	ML	M	Sindyanet Zeidane	ML	ML	M	Souaisset Aakkar	L	M	M
Srar	L	M	M	Tal Abbas El Gharby	L	M	M	Tal Abbas El-Charqy	L	M	M
Tal Biret	L	M	M	Tal Hmayra	L	M	M	Tal Maayan Tal Kiri	L	M	MH
Tal Sibel	L	M	MH	Tallet Chattaha	L	M	M	Tikrit	L	ML	M
Tleil	L	M	M	Tshea	L	L	ML	Zawarib	L	M	M
Zouq El Hosniyeh	L	M	M	Zouq El-Haddara	L	M	M	Zouq El-Hbalsa	L	M	M
Zouq El-Moqachrine	L	M	M								

## Sud

### Sour

Municipality	09-Jan	10-Jan	11-Jan	Municipality	09-Jan	10-Jan	11-Jan	Municipality	09-Jan	10-Jan	11-Jan
Aaiyeh	VL	M	M	Aalma El-Chaab	L	ML	M	Aaytit	VL	M	M
Abbassiyeh Sour	L	M	M	Abou Chech	L	M	MH	Ain Abou Abdallah	L	M	M
Ain Baal	L	M	M	Arzoun	VL	M	M	Aziyeh	L	ML	M
Baflaya	VL	M	M	Barich	VL	M	M	Batouliyah	L	M	MH
Bayad	VL	M	M	Bazouriyeh	L	M	M	Bediass	VL	M	M
Bestiyat	VL	M	M	Borj El Chemali	L	M	MH	Borj En-Naqoura	L	M	M
Borj Rahhal	VL	M	M	Boustane	L	M	M	Btaychiyah	L	M	M
Chaaitiye	L	M	M	Chameh	L	ML	M	Chehabiye	VL	M	M
Chehour	VL	L	M	Chihine	L	M	M	Debaal Sour	VL	M	M
Deir Amess	VL	ML	M	Deir Kifa	VL	M	M	Deir Qanoun El-Ain	L	M	MH
Deir Qanoun El-Naher	VL	M	M	Derdghaiya	VL	M	M	Dhayra	L	M	M
Halloussiyeh	VL	M	M	Hamoul	VL	ML	M	Hanaouey	L	M	M
Henniye	L	M	MH	Hmairi Sour	VL	M	M	Iskandarouna Sour	L	ML	M
Jbal El Botom	VL	ML	M	Jebbin	L	M	MH	Jennata	VL	M	M
Jijim	VL	ML	M	Jouaiya	VL	M	M	Kneisset Sour	L	M	M

Maarake	VL	M	M	Maaroub	VL	M	M	Majadel	VL	M	M
Majdalzoun	L	M	M	Mansouri Sour	L	M	MH	Marnba	VL	L	M
Marouahine	VL	ML	M	Mazraat El-Zalloutiy	L	M	M	Mazraat Mechref	VL	M	M
Mazraat Tayr Semhat	VL	L	M	Mheilib	L	M	MH	Neffakhiyeh	VL	M	M
Niha Sour	VL	M	M	Ouadi Jilo	VL	M	M	Qana	VL	M	M
Qolaileh Sour	L	M	MH	Rechknayan	VL	ML	M	Rmadiyah	VL	M	M
Selha Sour	VL	M	M	Siddiqine	VL	M	M	Sour	L	M	MH
Srifa	VL	ML	M	Tayr Debbe	L	M	M	Tayr Felsay	VL	M	M
Tayr Harfa	L	M	MH	Touayri	VL	L	M	Toura	VL	M	M
Yanouh Sour	VL	M	M	Yarine	L	M	MH	Zebqine	VL	L	M

## Saida

Municipality	09-Jan	10-Jan	11-Jan	Municipality	09-Jan	10-Jan	11-Jan	Municipality	09-Jan	10-Jan	11-Jan
Aanqoun	VL	M	M	Aaqtanit	VL	M	M	Aarab Ej-Jall	VL	M	M
Aarab Tabbaya	VL	M	M	Abra Saida	L	M	M	Adloun	VL	M	M
Adousiyeh	L	M	M	Ain-El-Deleb	L	ML	M	Arzai	L	M	M
Babliyah	VL	M	M	Barty	VL	ML	M	Bissariyeh	L	M	M
Bnaafoul	VL	M	M	Bqosta	L	M	M	Bramiy	L	M	M
Daoudiyeh	VL	M	M	Dareb El-Sim	VL	ML	M	Erkay	VL	M	M
Ghassanieh	VL	M	M	Ghazieh	L	M	M	Hajjeh	VL	M	M
Haret Saida	L	M	M	Hartiyeh	VL	M	M	Hlaliye Saida	L	M	M
Insariyat	VL	M	M	Jazira Saida	L	M	M	Kafar Bit	VL	ML	M
Kaoutariyet El-Siyad	VL	M	M	Kfar Chellal	VL	ML	M	Kfar Hatta Saida	VL	ML	M
Kfar Milke Saida	VL	ML	M	Khartoum	VL	M	M	Khaziz	VL	M	M
Khirbet Ed-Douair Sa	VL	M	M	Khirbet El-Bassal	L	M	M	Khrayeb Saida	VL	M	M
Loubieh	VL	M	M	Maghdouche	VL	ML	M	Majdelyoun	L	M	M
Matariyet El-Choumar	L	M	M	Matayriyeh	VL	ML	M	Mazraat 'Mseileh	L	M	M
Mazraat 'Snaiber	L	M	M	Mazraat Aarab Soukka	VL	M	M	Mazraat Deir Taqla	VL	M	M
Mazraat El Yahoudiye	L	M	H	Mazraat El-Housseini	L	M	M	Mazraat El-Mhaydaleh	VL	M	M
Mazraat El-Ouasta	L	M	M	Mazraat Jamjim	VL	M	M	Mazraat Kaoutariyet	VL	M	M
Mazraat Kfar Badda	VL	M	M	Mazraat Oussamiyat	VL	M	M	Mazraat Sari	VL	M	M
Mazraat Sinai	VL	M	M	Meemariyeh	VL	ML	M	Merouaniyeh	L	M	M
Miyeh ou Miyeh	VL	M	M	Najjariyeh	L	M	M	Qaaqaiyat El-Snaouba	L	M	M
Qnarit	VL	M	M	Qraiye Saida	VL	M	M	Saida Ed-Dekermane	L	M	M
Saida El-Oustani	L	M	M	Saida El-Qadimeh	L	M	M	Saida Kefraya	L	ML	M
Saksakiyeh	VL	M	M	Salhigh Saida	L	M	M	Sarafand	L	M	M
Sfenta	VL	L	M	Tafahta	L	M	M	Tanbourit	VL	ML	M
Tebna	L	M	M	Zaghdraiya	VL	ML	M	Zeita	VL	ML	M
Zrariyeh	VL	M	M								

## Jezzine

Municipality	09-Jan	10-Jan	11-Jan	Municipality	09-Jan	10-Jan	11-Jan	Municipality	09-Jan	10-Jan	11-Jan
Ain El-Mir (El Estab)	VL	ML	M	Anane	VL	L	ML	Aramta	VL	L	M
Ariya	VL	L	M	Aychiyeh	VL	L	ML	Azour	VL	L	ML
Baba	VL	L	ML	Bayssour Jezzine	VL	M	M	Benoueteh Jezzine	VL	L	M
Bhannine	VL	L	M	Bisri	VL	L	ML	Bkassine	VL	L	ML
Bouslaya	VL	L	ML	Btedine El-Leqech	VL	L	ML	Chbail	VL	VL	L
Choualiq Jezzine	L	M	M	Dahr Ed-Deir	VL	L	ML	Deir El Qattine	VL	L	ML

Demachqiyeh	VL	ML	M	Ghabbatiyeh	VL	L	ML	Harf Jezzine	VL	L	ML
Hassaniyeh	VL	ML	M	Haytouleh	VL	L	M	Haytura	VL	L	ML
Hidab	VL	L	M	Homsiyeh	VL	L	ML	Jabal Toura	VL	L	M
Jarmaq	VL	ML	M	Jensnaya	VL	M	M	Jernaya	VL	ML	M
Jezzine	VL	L	M	Karkha	L	ML	M	Kfar Falous	VL	ML	M
Kfar Houna	VL	L	M	Kfar Jarrah	L	M	M	Lebaa	L	M	M
Louayzet Jezzine	VL	L	M	Machmouche	VL	L	ML	Mahmoudiyeh Jezzine	VL	ML	M
Maknounye Jezzine	VL	L	ML	Maraat Ouazaiyeh	VL	L	M	Mazraat Daraya	VL	L	ML
Mazraat El-Aarqoub	VL	L	ML	Mazraat El-Mathane	VL	L	L	Mazraat El-Rahbane	VL	L	ML
Mazraat Khallet Khaz	VL	L	ML	Mazraat Louzid (Loua	VL	L	L	Mazraat Qrouh	VL	L	M
Mazraat Tamra	VL	ML	M	Mazraat Zighrine Jez	VL	L	ML	Mazraat	VL	L	ML
Mharbiyeh	VL	M	M	Midane Jezzine	VL	L	ML	Mjeydel Jezzine	VL	M	M
Mlikh	VL	L	M	Mrah El-Hbasse	L	ML	M	Ouadi Baanqoudaine	VL	M	M
Ouadi El-Laymoun	VL	ML	M	Ouardiyeh	VL	VL	L	Qabaa Jezzine	VL	L	ML
Qatrani	VL	L	ML	Qaytouleh	VL	L	ML	Qtaleh Jezzine	VL	L	ML
Rihane Jezzine	VL	L	M	Rimat	VL	L	ML	Roum	VL	L	ML
Roummanet	VL	ML	M	Sabbah	VL	L	ML	Saydoun	VL	L	ML
Sfaray	VL	L	L	Snaya	VL	L	ML	Sojoud	VL	L	M
Srayri	VL	L	M	Taaid	VL	L	ML	Wadi Jezzine	VL	L	ML
Zhalta	VL	L	ML								

## Bekaa

### West Bekaa

Municipality	09-Jan	10-Jan	11-Jan	Municipality	09-Jan	10-Jan	11-Jan	Municipality	09-Jan	10-Jan	11-Jan
Aammiq BG	VL	VL	M	Ain El Tineh BG	VL	L	M	Ain Zebdeh	VL	ML	M
Ana	VL	L	M	Aytanit	VL	L	ML	Baaloul BG	VL	L	M
Bab Mareh	VL	ML	M	Chouberqiye Aammiq	VL	VL	M	Dakoue	L	L	M
Deir Ain El-Jaouze	VL	ML	M	Deir Tahniche	VL	VL	M	Ghaza	VL	VL	M
Harime El-Soughra	L	L	M	Hoch Harimeh	L	L	M	Jazira BG	VL	VL	M
Jib Jennine	VL	L	M	Kamed-El-Laouz	VL	L	M	Kefraya BG	VL	L	ML
Khiara El Atika	VL	VL	M	Khiara	L	L	M	Khirbet Qanafar	VL	L	M
Lala	VL	L	M	Lebbaya BG	VL	ML	M	Loussa	VL	ML	M
Machghara	VL	L	M	Manara (Hammara) BG	VL	VL	ML	Mansoura BG	VL	VL	M
Marej BG	VL	L	M	Maydoun	VL	L	M	Ouaqf BG	VL	VL	M
Qaraaoun	VL	ML	M	Qelya	VL	L	M	Raouda (Istabel)	VL	L	M
Saghbine	VL	ML	M	Sohmor	VL	ML	M	Soltan Yacoub el Ara	L	L	M
Souairy	L	VL	M	Sultan Yaacoub	VL	L	M	Tal Znoub	VL	VL	M
Yehmor BG	VL	ML	M	Zilaya	VL	L	M				

### Zahle

Municipality	09-Jan	10-Jan	11-Jan	Municipality	09-Jan	10-Jan	11-Jan	Municipality	09-Jan	10-Jan	11-Jan
Aanjar (Haouch Mouss	VL	L	M	Ablah	VL	L	M	Ain Kfarzabad	VL	L	M
Ali-El-Nahri	VL	ML	M	Bar Elias	VL	L	M	Bouarej	VL	ML	M
Cheberqiyet Tabet	VL	L	M	Chtaura	VL	L	M	Deir El Ghazal	VL	L	M
Delhamiyet Zahle	VL	L	M	Ferzol	VL	L	M	Haouch El-Ghanam	VL	ML	M
Haouch Es-Siyadeh	VL	L	M	Haouch Hala	VL	L	M	Haouch Mandara	VL	L	M

Haouch Qayssar	VL	L	M	Hezerta	VL	L	M	Hosh Moussa	VL	L	M
Jdita	VL	L	M	Kfarzabad	VL	L	M	Ksara	VL	L	M
Majdel Aanjar	L	VL	M	Makssi	VL	L	M	Massa	VL	ML	M
Mazraat Er-Remtaniye	VL	L	M	Mrayjat Zahle	VL	L	M	Mzaraa Zahle	VL	L	M
Nabi Ayla	VL	L	M	Nasriyet Rizk	VL	ML	M	Nasriyet Zahle	VL	L	M
Niha Zahle	VL	L	M	Ouadi Ed-Deloum	VL	L	M	Ouadi El-Arayech	VL	L	M
Qaa El Rim	VL	ML	M	Qab Elias	VL	L	M	Qousaya	VL	L	M
Rhit	VL	L	M	Riyak	VL	ML	M	Saadnayel	VL	L	M
Taal El-Akhdar	VL	L	M	Taalbeya	VL	L	M	Taanayel	VL	L	M
Talamara	VL	ML	M	Tcheflik Edde Haouch	VL	L	M	Tcheflik Qiqano	VL	L	M
Terbol Zahle	VL	L	M	Touaite Zahle	VL	L	M	Zahle Aradi	VL	L	M
Zahle El-Berbara	VL	ML	M	Zahle El-Maallaqa	VL	L	M	Zahle El-Midane	VL	L	M
Zahle Er-Rassiye	VL	ML	M	Zahle Haouch El-Ouma	VL	L	M	Zahle Haouch El-Ouma	VL	L	M
Zahle Haouch Ez-Zara	VL	L	M	Zahle Maalaqa Aradi	VL	L	M	Zahle Mar Antonios	VL	ML	M
Zahle Mar Elias	VL	L	M	Zahle Mar Gerios	VL	L	M	Zahle Saydet En-Naja	VL	L	M
Zebdoul	VL	L	M								

## Rachaiya

Municipality	09-Jan	10-Jan	11-Jan	Municipality	09-Jan	10-Jan	11-Jan	Municipality	09-Jan	10-Jan	11-Jan
Ain Arab Rachaiya	VL	VL	M	Ain Ata	VL	VL	ML	Ain Harche	VL	L	M
Aqabe Rachaya	VL	L	M	Ayha	VL	L	M	Ayta El Fokhar	VL	L	M
Bakifa Rachaya	VL	L	M	Bakka	VL	VL	M	Beit Lahya	VL	L	M
Bireh Rachaiya	VL	L	M	Daher El Ahmar	VL	VL	M	Deir El-Achayer	VL	VL	ML
Heloua Rachaiya	VL	L	ML	Hoch El Qannabeh Rac	VL	L	ML	Kaoukaba Bou Arab	VL	L	M
Kfar Danis	VL	VL	M	Kfar Mechki	VL	L	M	Kfar Qouq	VL	VL	ML
Kherbet Rouha	VL	VL	M	Majdel Balhiss	VL	L	M	Mdoukha	VL	L	M
Mhaydseh Rachaiya	VL	L	M	Nabi Safa	VL	L	M	Rachaiya	VL	L	M
Rafid Rachaiya	VL	L	M	Selsata (Mazraat Dei	VL	VL	L	Tannoura	VL	L	M
Yanta	VL	VL	ML								

## Beyrouth

### Beyrouth

Municipality	09-Jan	10-Jan	11-Jan	Municipality	09-Jan	10-Jan	11-Jan	Municipality	09-Jan	10-Jan	11-Jan
Achrafieh	L	M	MH	Ain el-Mreisse	L	M	H	Bachoura	L	M	MH
Beirut Central Distr	L	M	MH	Marfai	L	M	MH	Mazraa	L	M	MH
Medaouar	L	M	MH	Minet el-Hosn	L	M	MH	Mwssaitbeh	L	M	MH
Ras Beirut	L	M	H	Rmeil	L	M	MH	Saifi	L	M	MH
Zqaq el-Blat	L	M	MH								