

Lebanon Fire Risk Bulletin



CIVIL DEDEFENCE

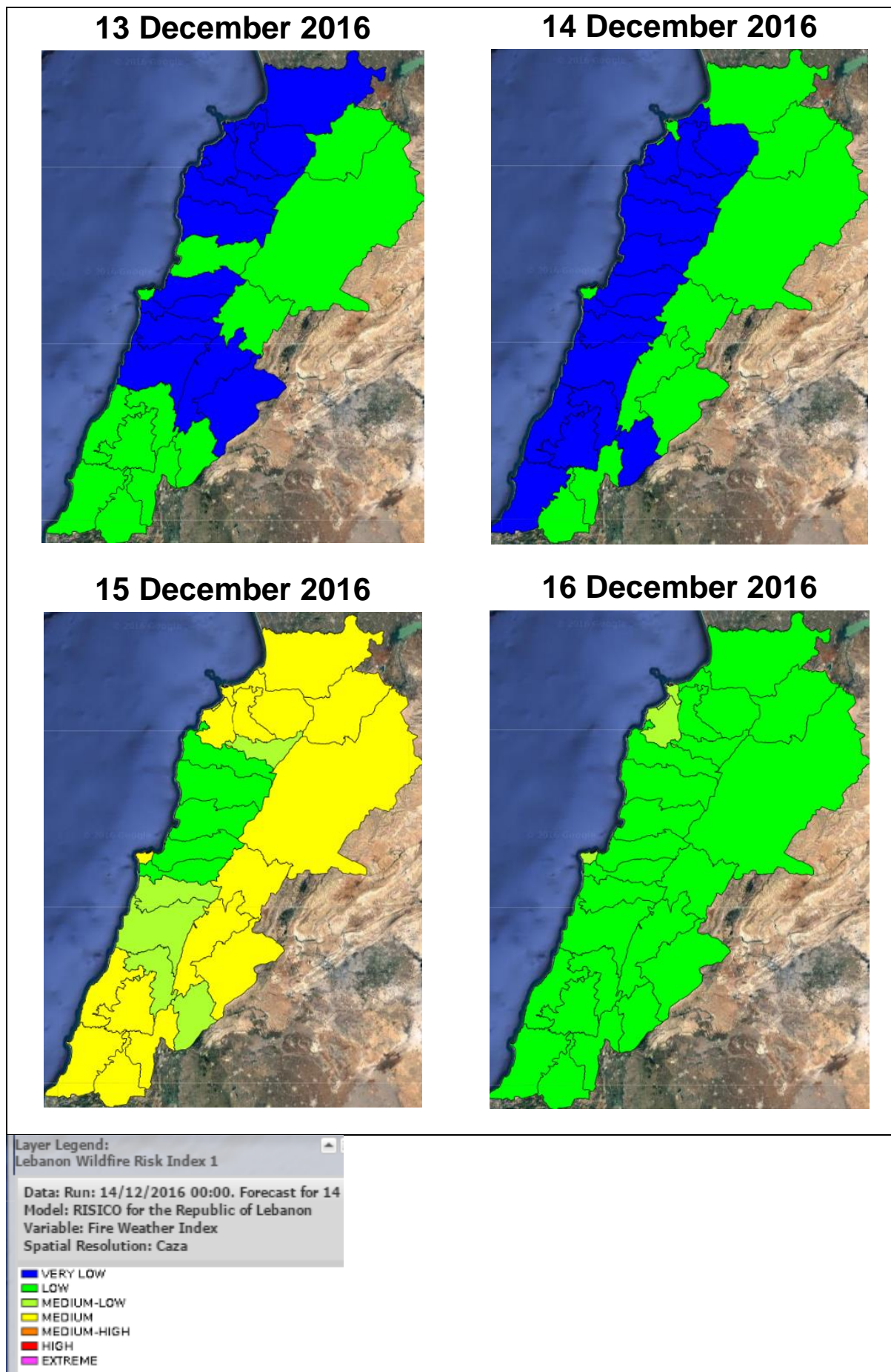
Refer to cadast condition.

General description of potential fire risk situation

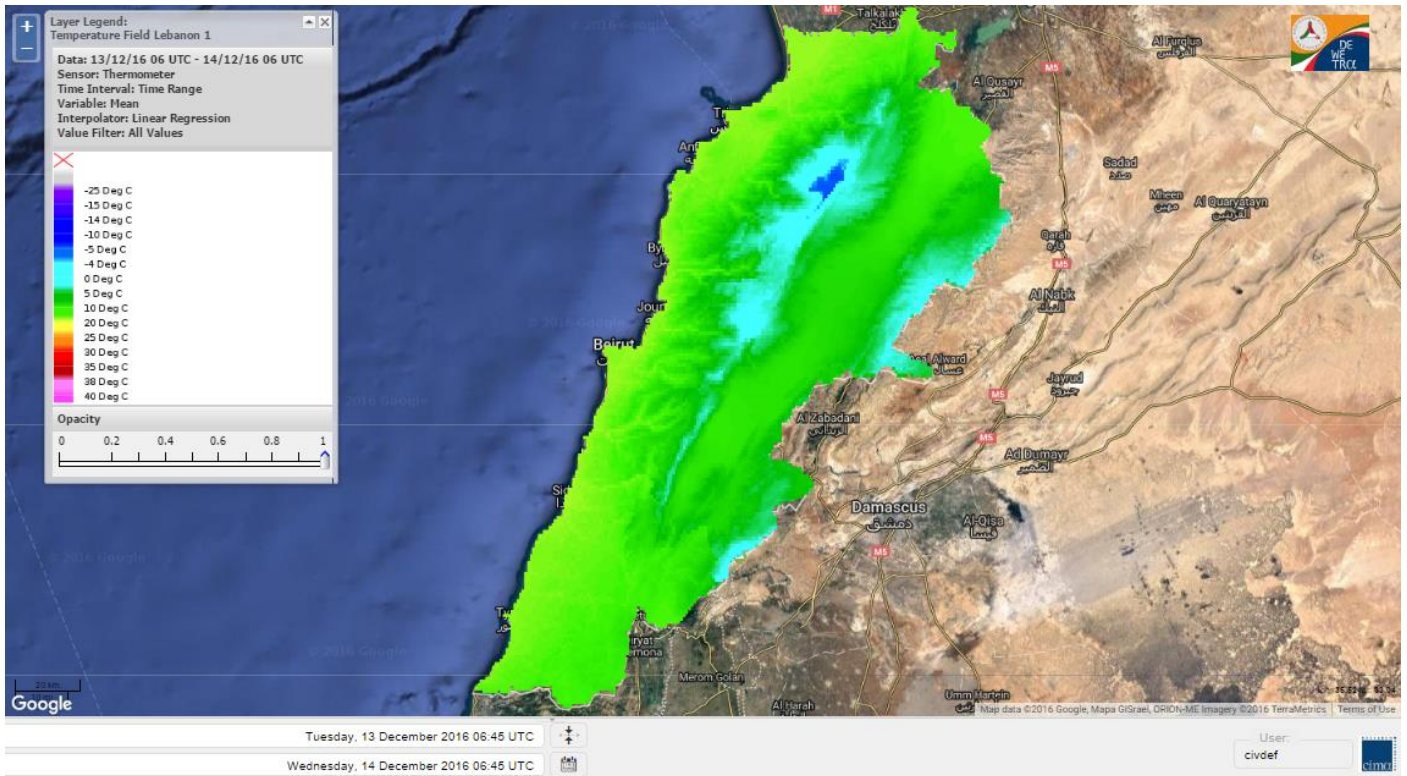
Symbol	Level of risk	Meaning and actions
VL	Very low	Very low fire risk. Controlled burning operations can be hardly executed due to high fuel moisture content. Normally wildfires self-extinguish.
L	Low	Low fire risk. Controlled burning operations can be executed with a reasonable degree of safety.
ML	Medium low	Medium-low fire risk. Controlled burning operations can be executed in safety conditions. All the fires need to be extinguished.
M	Medium	Medium fire risk. Controlled burning operations would be avoided. All the fires need to be very well extinguished.
M	Medium high	Controlled burning is not recommended. Open flame will start fires. Cured grasslands and forest litter will burn readily. Spread is moderate in forests and fast in exposed areas. Patrolling and monitoring is suggested. Fight fires with direct attack and all available resources.
H	High	Ignition can occur easily with fast spread in grass, shrubs and forests. Fires will be very hot with crowning and short to medium spotting. Direct attack on the head may not be possible requiring indirect methods on flanks. Patrolling and monitoring the territory is highly suggested.
E	Extreme	Ignition can occur also from sparks. Fires will be extremely hot with fast rate of spread. Control may not be possible during day due to long range spotting and crowning. Suppression forces should limit efforts to limiting lateral spread. Damage potential total. Patrolling and monitoring the territory is highly suggested.

Beirut, 14 December 2016

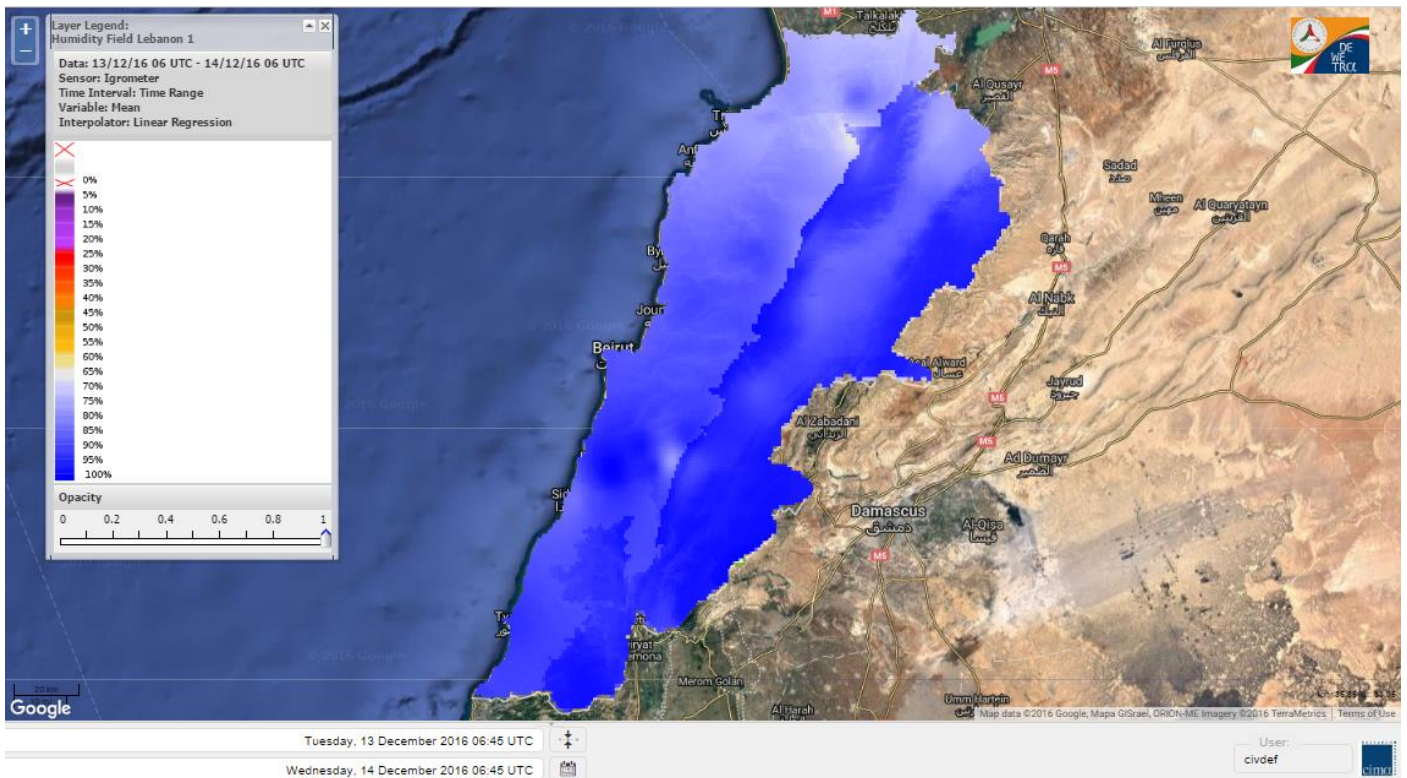
FIRE RISK INDEX



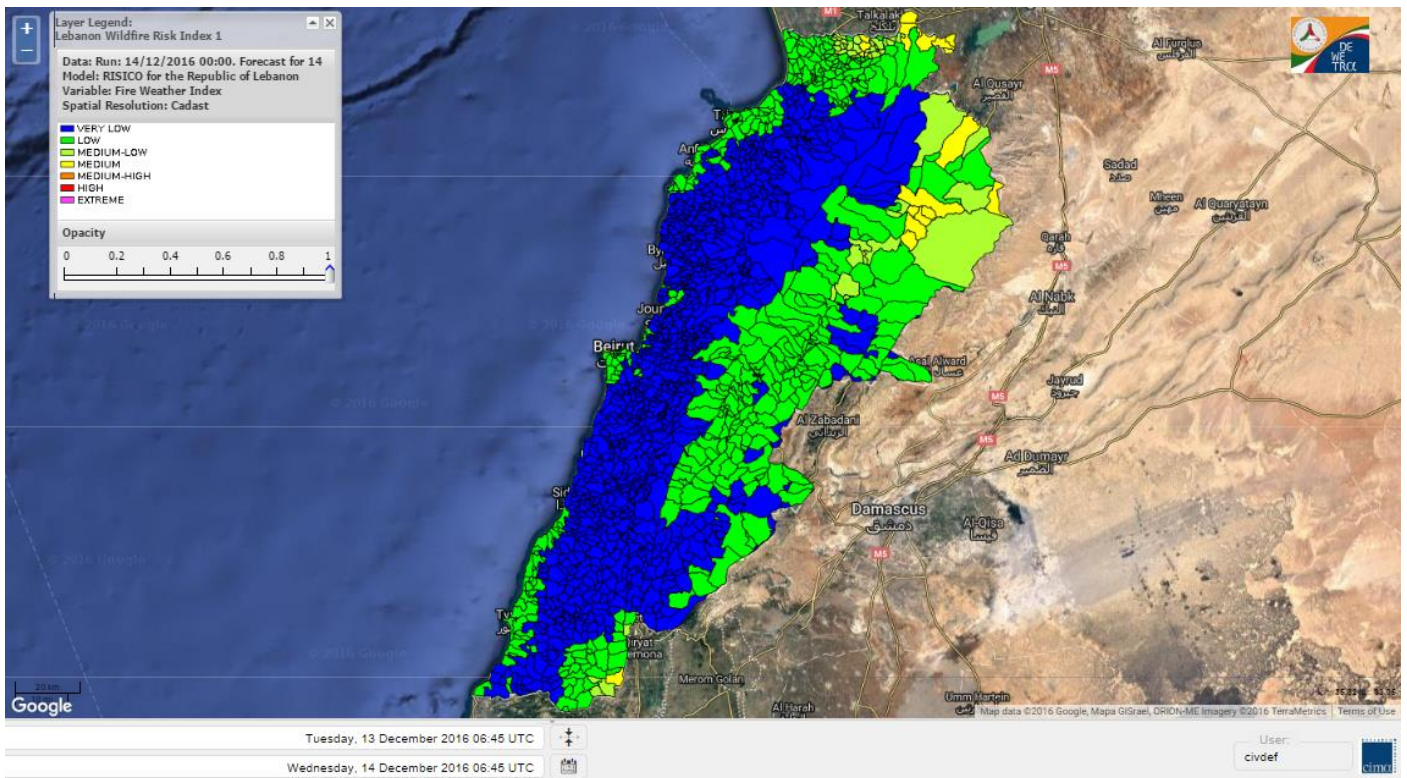
Lebanon temperature for 14 December 2016



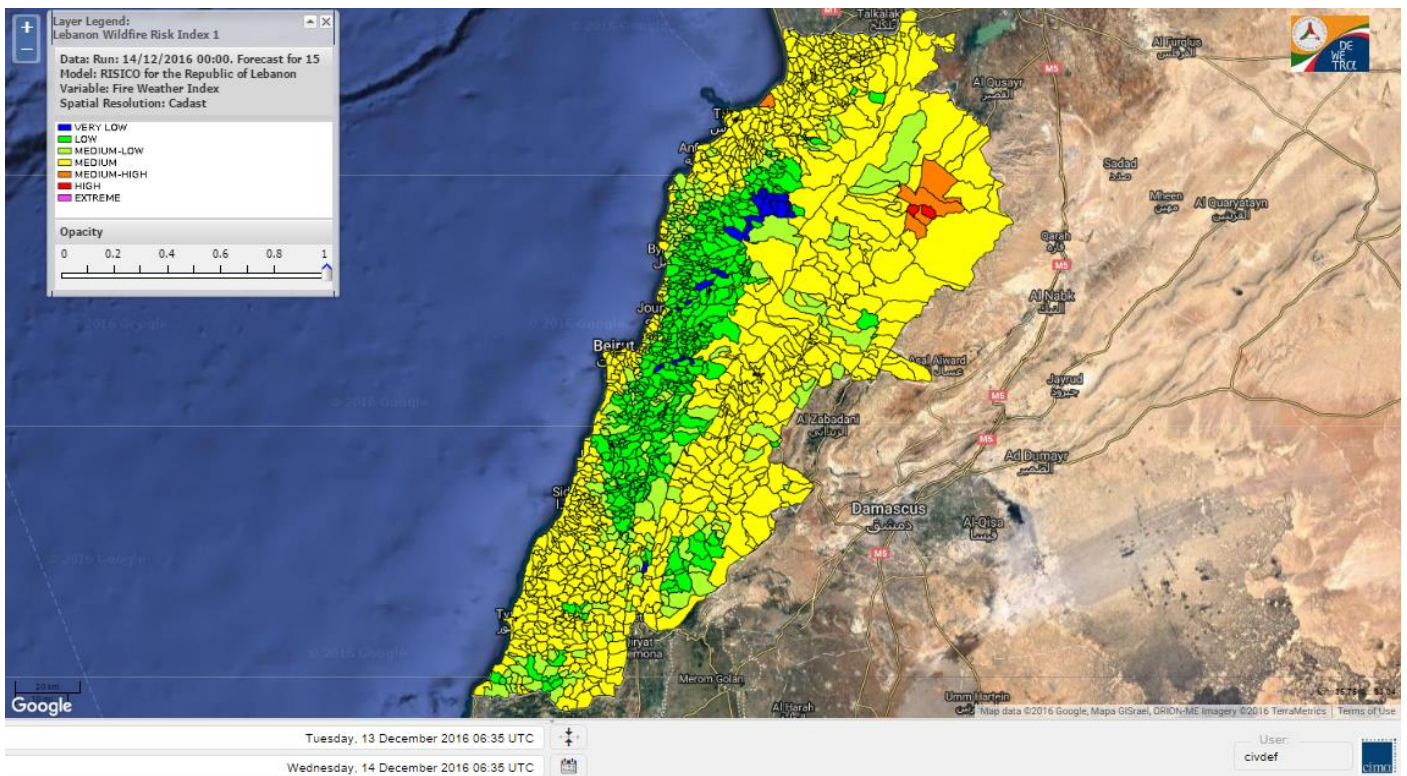
Lebanon humidity for 14 December 2016



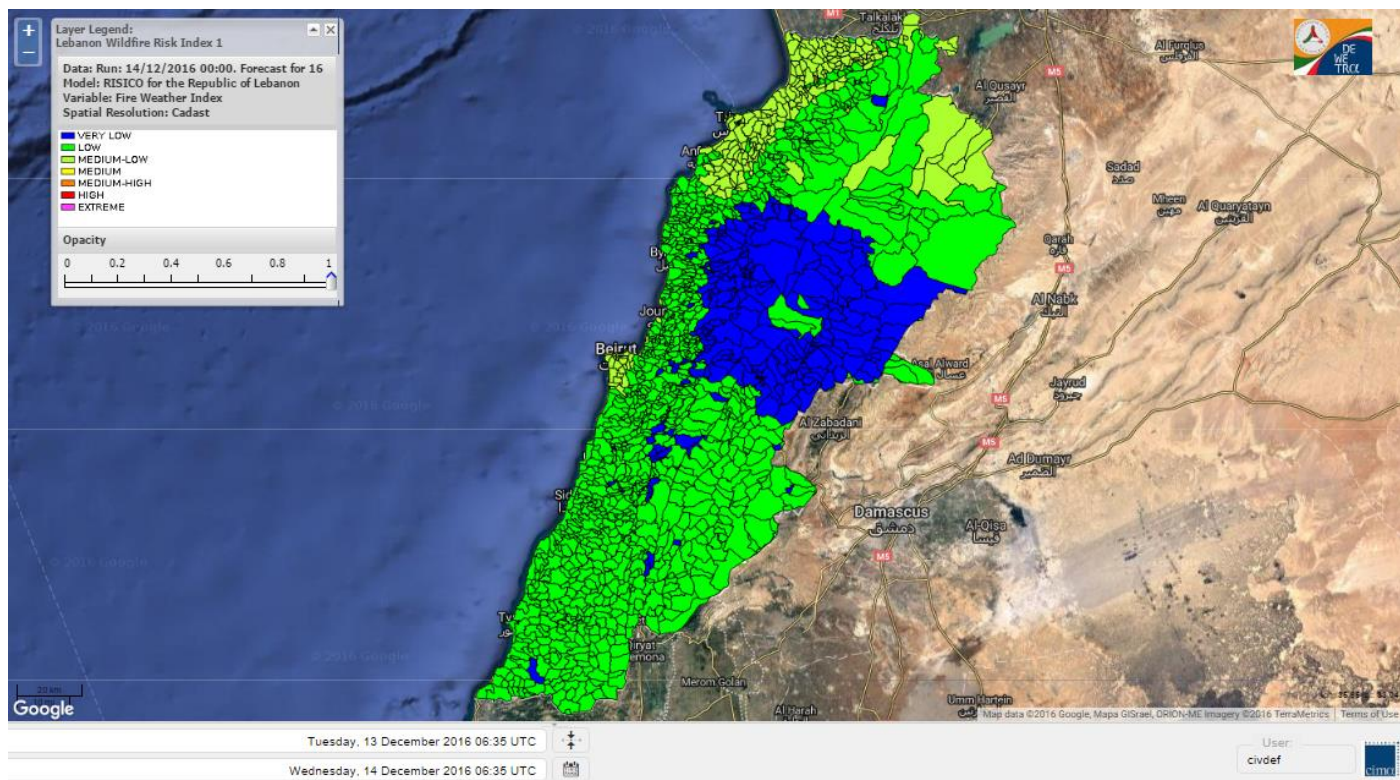
Lebanon for 14 December 2016



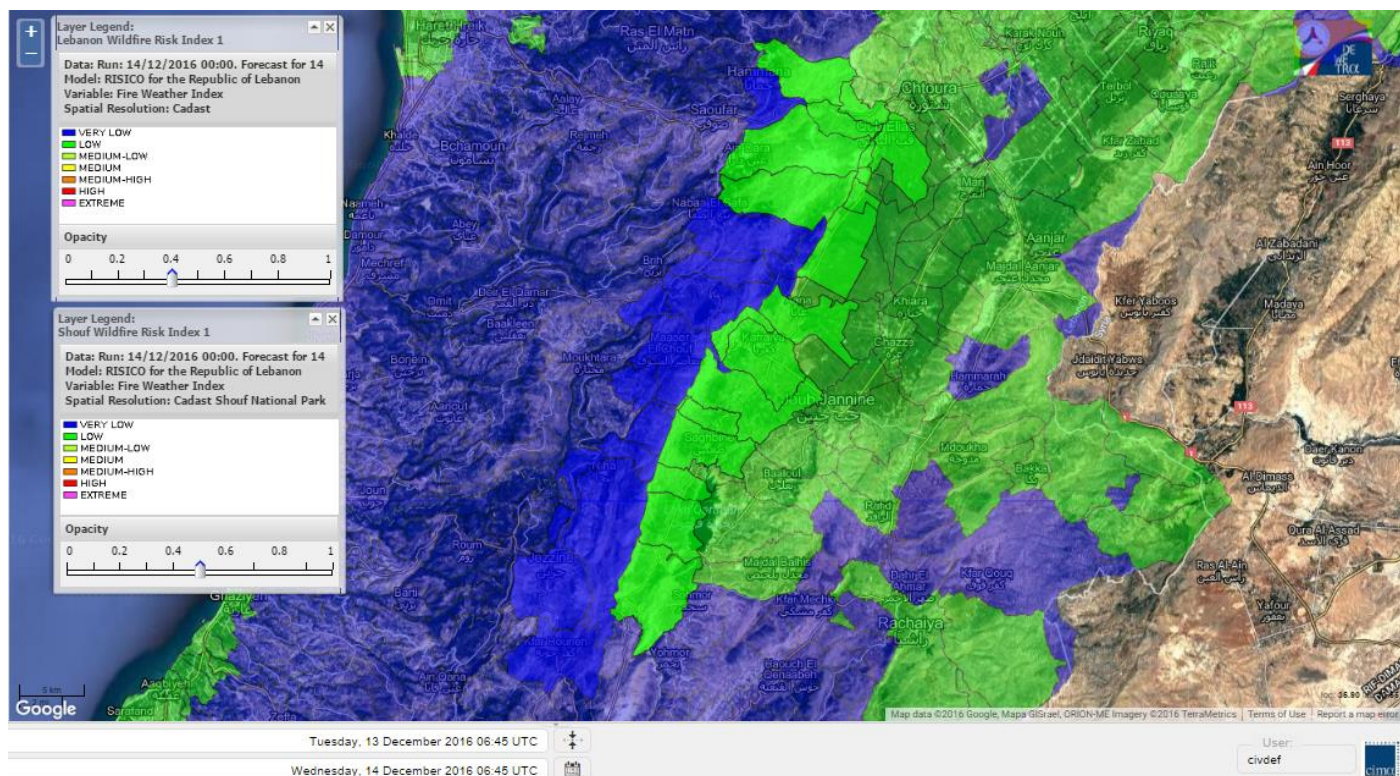
Lebanon for 15 December 2016



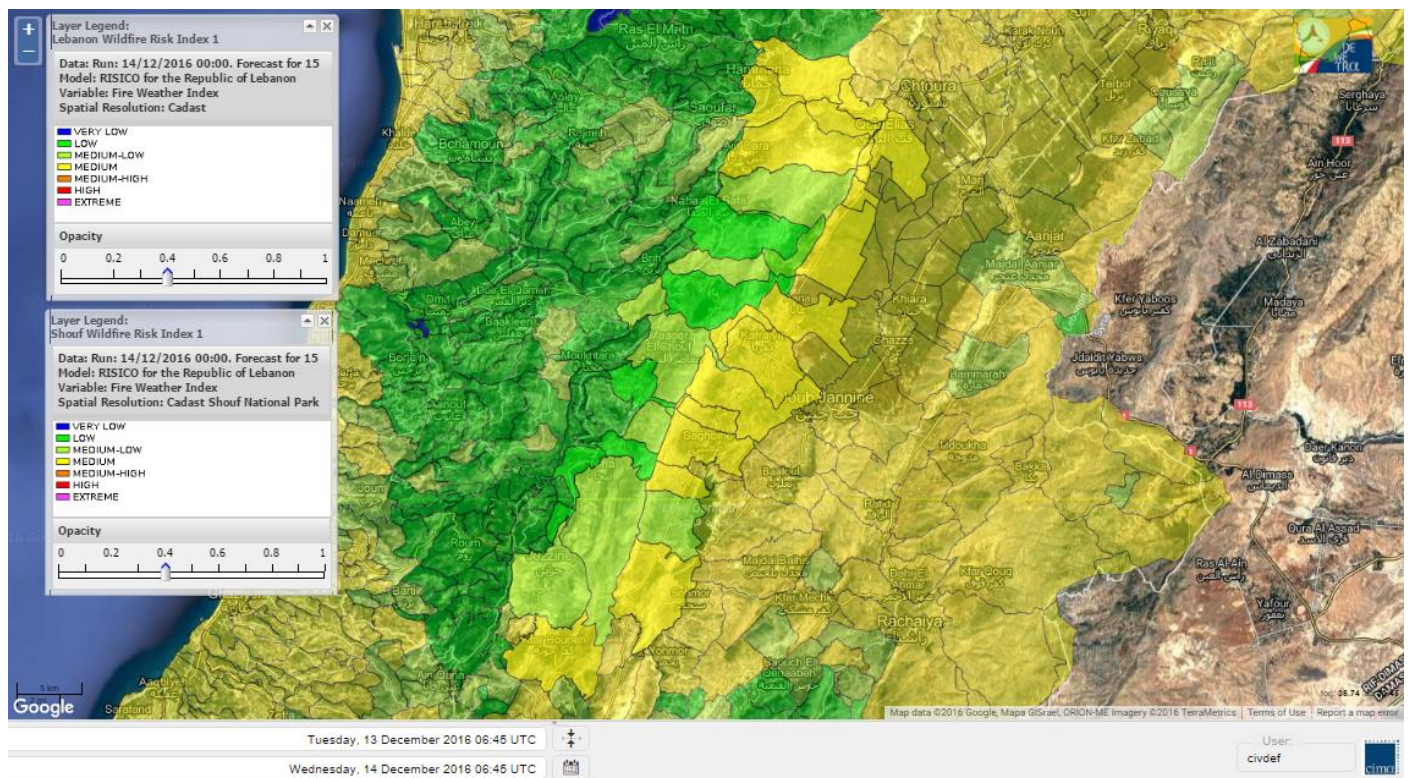
Lebanon for 16 December 2016



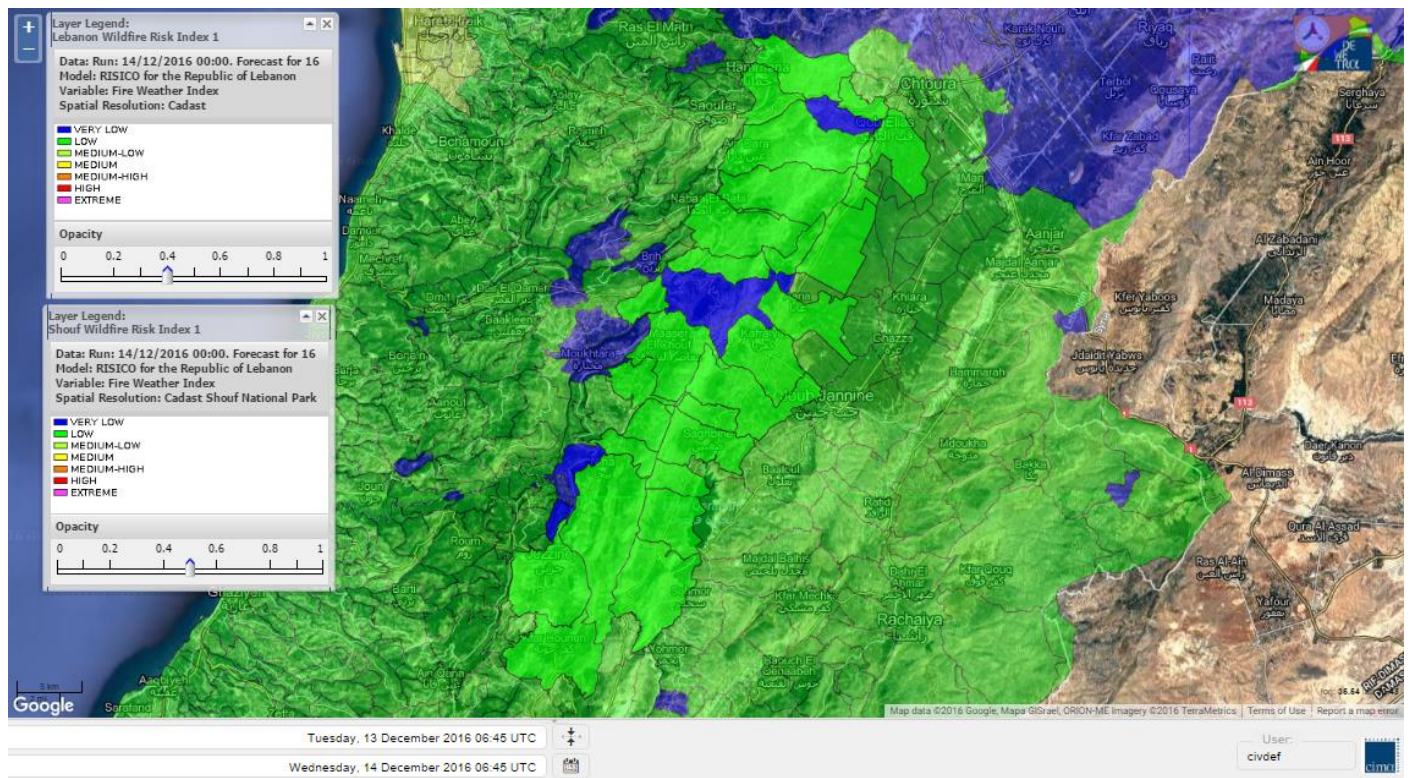
Shouf Biosphere Reserve Forecast for 14 December 2016



Shouf Biosphere Reserve Forecast for 15 December 2016



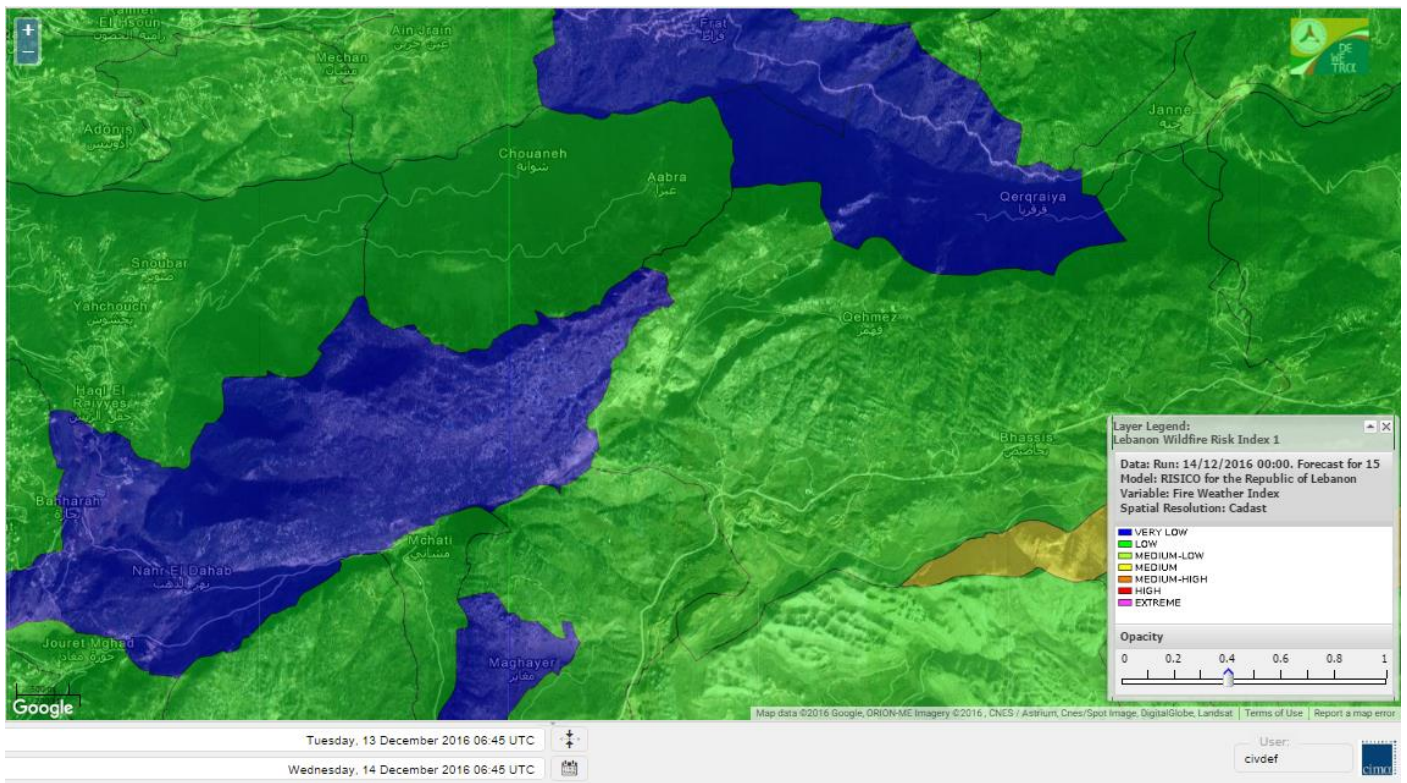
Shouf Biosphere Reserve Forecast for 16 December 2016



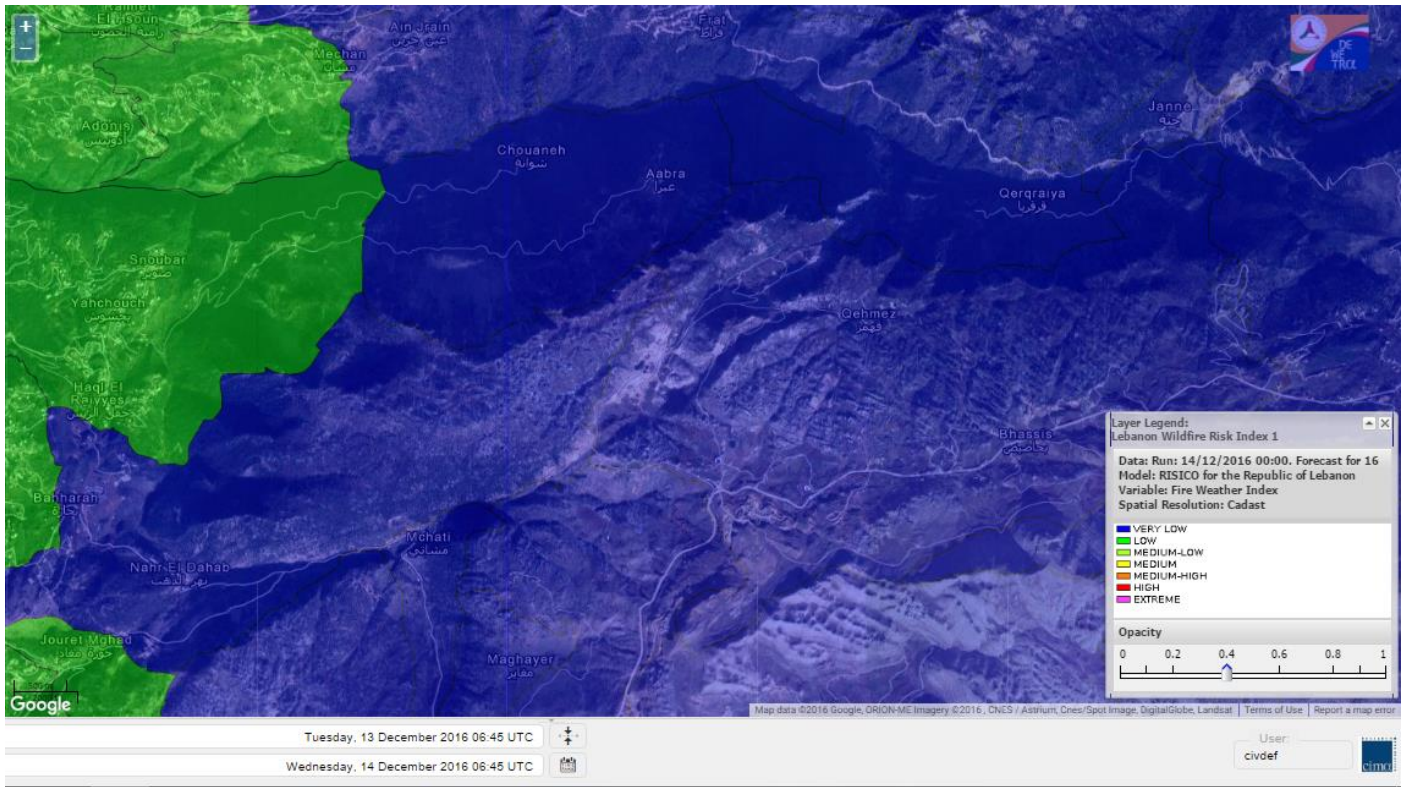
Jabal Moussa Reserve Forecast for 14 December 2016



Jabal Moussa Reserve Forecast for 15 December 2016



Jabal Moussa Reserve Forecast for 16 December 2016



Nord

Koura

Municipality	14-Dec	15-Dec	16-Dec	Municipality	14-Dec	15-Dec	16-Dec	Municipality	14-Dec	15-Dec	16-Dec
Aaba	VL	M	ML	Afsaddiq	VL	M	ML	Ain Ekriane	VL	M	ML
Amioun	VL	M	ML	Anfeh	L	M	L	Badbhoun	VL	M	ML
Barghoun	L	M	L	Barsa	VL	M	ML	Batroumine	L	M	ML
Bdebba	VL	M	ML	Bechmizine	VL	M	ML	Bednayel El-Koura	L	ML	L
Bhabbouch El-Koura	VL	ML	L	Bkeftine	VL	M	ML	Bnehran	VL	ML	L
Bqaiiaa El-Koura	VL	M	ML	Bsarma	VL	M	ML	Btaaboura	VL	M	ML
Bttram	L	M	ML	Btouratij	VL	M	ML	Bziza	VL	M	ML
Dar Beechtar	VL	M	ML	Dar Chmezzine	VL	M	ML	Deddeh	L	M	ML
Deir El-Balamand	VL	ML	L	Fih	L	M	ML	Hraiche	L	M	ML
Ijdaabrine	VL	ML	L	Kaftoun	VL	M	L	Kefraya El-Koura	L	M	L
Kfarakka	VL	M	ML	Kfarhata	VL	ML	L	Kfarhazir	VL	M	ML
Kfarkahel	VL	M	ML	Kfarsaroun	VL	M	ML	Kosba	VL	M	ML
Mejdel el-Koura	VL	ML	L	Nakhle	VL	M	ML	Qalhat	VL	ML	L
Ras Masqa	L	M	ML	Rechdibbine	VL	M	ML	Zakroun	VL	M	L
Zgharta El-Mtaouile	VL	L	L								

Bcharre

Municipality	14-Dec	15-Dec	16-Dec	Municipality	14-Dec	15-Dec	16-Dec	Municipality	14-Dec	15-Dec	16-Dec
Aabdine	VL	L	L	Bane	VL	L	L	Barhelioun	VL	L	L
Bazouone	VL	VL	VL	Becharre	VL	M	L	Beit Menzer	VL	VL	L
Billa	VL	VL	L	Blaouza	VL	VL	L	Bqaa Kafra	VL	L	VL
Bqerqacha	VL	VL	VL	Breissat	VL	VL	VL	Dimane	VL	VL	VL
Hadath El Jobbeh	VL	VL	VL	Hadchit	VL	VL	L	Hasroun	VL	VL	VL
Mazraat Aassaf	VL	L	VL	Mazraat Bani Saab	VL	L	VL	Mchaa El-Jobbeh	VL	M	VL
Metrit	VL	L	L	Moghr El-Ahoual	VL	ML	L	Ouadi Qannoubine	VL	VL	VL
Qanat	VL	VL	L	Qnayouer	VL	VL	L	Tourza	VL	L	L

Batroun

Municipality	14-Dec	15-Dec	16-Dec	Municipality	14-Dec	15-Dec	16-Dec	Municipality	14-Dec	15-Dec	16-Dec
Aabrine	VL	ML	L	Aalali	VL	L	VL	Aartziz	VL	L	L
Abdelli	VL	L	L	Ajdabra	VL	ML	L	Assia	VL	L	L
Basbina	VL	M	L	Batroun	VL	M	L	Bcheleh	VL	L	VL
Bechtoudar	VL	L	L	Beit Chlala	VL	L	L	Beit Kassab	VL	L	VL
Bijdarfil	VL	M	L	Bqesmaya	VL	ML	L	Chatine	VL	VL	VL
Chebtin	VL	L	L	Chekka	L	M	L	Daael	VL	L	L
Dahr Abi Yaghi	VL	L	L	Daraya El-Batroun	VL	M	L	Deir Billa	VL	L	L
Deir Kfifane	VL	M	L	Deir Mar Youhanna EL	VL	L	L	Deir Mar Youssef Jra	VL	L	L
Douma	VL	L	VL	Douq	VL	L	L	Eddeh El-Batroun	VL	ML	L
Ftahat El-Batroun	VL	L	L	Ghouma	VL	ML	L	Hadtoun	VL	L	VL
Hamat	L	ML	L	Harbouna	VL	L	L	Hardine	VL	L	VL
Helta	VL	L	L	Hery	L	M	L	Jebbla	VL	L	L
Jrabta El-Batroun	VL	ML	L	Jrane El-Batroun	VL	M	L	Kfar Aabida	VL	ML	L
Kfar Halda	VL	L	L	Kfarb Shlaimane	VL	L	L	Kfarhatna	VL	L	L
Kfarhay	VL	ML	L	Kfarhelos	VL	L	L	Kfifane	VL	M	L

Kfour El Arabi	VL	L	VL	Koubba	L	M	L	Kour	VL	ML	L
Mar Mama	VL	L	VL	Masrah	VL	L	L	Mehmarch	VL	L	L
Mrah Chdid	VL	ML	L	Mrah El Ziyat	VL	ML	L	Mrah El-Hajj	VL	L	L
Nahle El-Batroun	VL	L	L	Niha El-Batroun	VL	L	VL	Ouahj El-Hajjar	L	ML	L
Ouata Houb	VL	L	VL	Qatnaaoun	L	ML	L	Racha	VL	L	L
Rachana	VL	ML	L	Rachkida	VL	ML	L	Ram El-Batroun	VL	L	VL
Ras Nahhach	L	ML	L	Selaata	L	M	L	Sghar	VL	ML	L
Smar Jbayl	VL	ML	L	Sourat El-Batroun	VL	L	L	Tannourine El-Faouqa	VL	ML	VL
Tannourine Et-Tahta	VL	VL	VL	Thoum	VL	M	L	Toula El-Batroun	VL	L	L
Zan	VL	L	L								

Zgharta

Municipality	14-Dec	15-Dec	16-Dec	Municipality	14-Dec	15-Dec	16-Dec	Municipality	14-Dec	15-Dec	16-Dec
Aachach	L	M	ML	Aalma	L	M	ML	Aarde	L	M	ML
Aintourine	VL	L	L	Arabet Qozhaya	VL	L	L	Arde	L	M	ML
Arjis	VL	M	ML	Asnoun	VL	M	ML	Ayto	VL	L	L
Basloukit	VL	L	L	Bchannine	VL	M	ML	Besebeel	VL	M	ML
Bhairret Toula	VL	L	L	Bnachee	VL	ML	L	Boussit	L	M	ML
Danha	VL	M	ML	Daraiya Zgharta	VL	M	ML	Deir Jdeide	VL	M	ML
Ehden	VL	L	L	Halan	L	M	ML	Hariq Zgharta	VL	M	ML
Houakir	VL	ML	L	Hraiqis	L	M	ML	laal	VL	M	L
Ijbaa	VL	L	L	Karm Saddeh	VL	L	L	Kfarchakhna	VL	M	ML
Kfardlaqous	VL	M	ML	Kfarfou	VL	ML	ML	Kfarhata Zgharta	VL	M	ML
Kfarhoura	VL	M	L	Kfarsghab	VL	L	L	Kfaryachit	VL	M	ML
Kfarzaina	VL	M	ML	Khaldiye	VL	M	ML	Mazraat Ajbeaa	VL	M	ML
Mazraat Et-Teffah	VL	L	L	Mazraat Jneid	VL	M	ML	Mejdlaya Zgharta	L	M	ML
Merh Kfarsghab	VL	M	L	Miryata	L	M	ML	Miziara	VL	ML	L
Mzraat Kefraya	L	M	ML	Qorah Bach	VL	M	ML	Rachiine	VL	M	ML
Ras Kifa	VL	ML	L	Sakhra	VL	M	L	Sebhel Zgharta	VL	L	L
Serhel	VL	L	L	Tallet Zgharta	L	M	L	Toula Zgharta	VL	L	L
Zgharta	VL	M	ML								

Minieh-Denniye

Municipality	14-Dec	15-Dec	16-Dec	Municipality	14-Dec	15-Dec	16-Dec	Municipality	14-Dec	15-Dec	16-Dec
Aasaymout	VL	M	L	Aaymar	VL	M	L	Aazki	VL	M	L
Ain El-Tineh-Miniyeh	VL	ML	L	Assoun	VL	M	L	Bakhaaoun	VL	M	L
Bchennata	VL	L	ML	Bechehhara	VL	L	L	Beddawi	L	M	ML
Behouaita	VL	L	L	Beit El Foqss	VL	ML	L	Beit Haouik	VL	M	ML
Beit Zoud	VL	M	L	Bekaasafrine	VL	M	L	Borj El Yahoudiyeh	L	M	ML
Bqarsouna	VL	ML	L	Btermaz	VL	M	L	Debaael	VL	M	L
Deir Ammar	L	M	ML	Deir Nbouh	VL	ML	L	Haouaret-Miniyeh	VL	M	L
Haql el Azimeh	VL	M	L	Harf El Siyad	VL	M	L	Hazmiye-Miniyeh	VL	L	L
Izal	VL	M	L	Jarjour	VL	L	L	Jayroun	VL	ML	L
Kahf El-Malloul	VL	ML	L	Karm El-Moher	VL	M	L	Kfar Binine	VL	M	L
Kfarchalane	VL	M	L	Kfarhabou	VL	M	L	Kharroub-Miniyeh	VL	M	L
Mazraat El-Kreme	VL	L	L	Mazraat Ketrane	VL	M	L	Merkebtta	L	M	ML
Minyeh	L	MH	ML	Mrah El Sfirat	VL	ML	L	Mrah Sraj	VL	M	L
Mrebbine	VL	M	L	Nabi Youcheaa	L	M	ML	Nemrine	VL	ML	L

Qarhaiya	VL	M	L	Qarne	VL	ML	L	Qarsita	VL	L	L
Qattineh-Miniyeh	VL	ML	L	Qemmamine	VL	ML	L	Qraine	VL	ML	L
Raouda-Aadoua	VL	M	ML	Rihaniyet-Miniyeh	VL	M	ML	Sfireh	VL	M	L
Sir Ed-Danniyeh	VL	M	L	Tarane	VL	M	L	Terbol-Miniyeh	L	M	ML
Zaghartaghriine	VL	ML	L	Zouq Bhannine	L	M	ML				

Nabatiye

Nabatiye

Municipality	14-Dec	15-Dec	16-Dec	Municipality	14-Dec	15-Dec	16-Dec	Municipality	14-Dec	15-Dec	16-Dec
Aabba	VL	M	L	Aazzi	VL	M	L	Adchit El-Chqif	VL	M	L
Ain Bou Swar	VL	ML	L	Ain Kana	VL	ML	L	Ali El-Taher	VL	ML	L
Ansar	VL	M	L	Arab Salim	VL	M	L	Arnoun	VL	ML	L
Bfaroue	VL	ML	L	Breyqaah	VL	M	L	Charqiyeh	VL	M	L
Choukine	VL	M	L	Deir El Zahrani	VL	M	L	Doueir El-Nabatiyeh	VL	M	L
Habbouch El-Nabatiye	VL	M	L	Hamra El-Nabatiyeh	VL	M	L	Harouf El-Nabatiyeh	VL	M	L
Hmaile	VL	ML	L	Houmin El Faouqa	VL	M	L	Houmin El Tahta	VL	M	L
Jarjough	VL	ML	L	Jbaah El-Nabatiyeh	VL	L	L	Jebchit	VL	M	L
Kfar Djal El-Nabatiy	VL	M	L	Kfar Remmane	VL	M	L	Kfar Sir	VL	M	L
Kfar Tebnit	VL	M	L	Kfarfila	VL	ML	L	Kfour El-Nabatieh	VL	M	L
Mayfadoun	VL	M	L	Mazraat Bsaffour	VL	M	L	Mazraat Chalbaal	VL	M	L
Mazraat Dmoul	VL	M	L	Mazraat El Khreibeh	VL	M	L	Mazraat El-Bayad El-	VL	M	L
Mazraat Kfarjaouz	VL	M	L	Mazraat Qalaat Meiss	VL	M	L	Nabatiyeh El-Fawka	VL	M	L
Nabatiyeh Et-Tahta	VL	M	L	Namiriyeh	VL	M	L	Qaaqaaiyet El Jisr	VL	M	L
Qossaibeh El-Nabatiy	VL	M	L	Roumine	VL	M	L	Sarba El-Nabatieh	VL	ML	L
Sir El-Gharbiyeh	VL	M	L	Toul	VL	M	L	Yehmor El-Nabatiyeh	VL	M	L
Zaoutar El Charkiyeh	VL	M	L	Zaoutar El-Gharbiyeh	VL	M	L	Zebdine El-Nabatiyeh	VL	M	L
Zefta	VL	M	L								

Hasbaiya

Municipality	14-Dec	15-Dec	16-Dec	Municipality	14-Dec	15-Dec	16-Dec	Municipality	14-Dec	15-Dec	16-Dec
Ain Jarfa	VL	L	L	Abou Qamha	VL	L	L	Ain Qania	VL	L	L
Bourghos	VL	M	L	Chebaa	L	ML	L	Chouaya Hasbaya	L	ML	L
Dellafeh	VL	M	L	Fardiss Hasbaiya	VL	ML	L	Hasbaya	VL	L	L
Hbariyeh	VL	L	L	Kaoukaba Hasbaiya	VL	M	L	Kfar Chouba	L	ML	L
Kfar Hamam	VL	L	L	Kfeir El-Zait	VL	L	L	Khalwat Hasbaya	VL	L	L
Khreibet Hasbaiya	VL	ML	L	Majdiyeh Hasbaiya	VL	ML	L	Marj Ez-Zhour (Haouc	VL	L	L
Meri	VL	ML	L	Mimass	VL	ML	L	Rachaiya El-Fokhar	VL	L	L
Salaiyeb	VL	M	L								

Marjayoun

Municipality	14-Dec	15-Dec	16-Dec	Municipality	14-Dec	15-Dec	16-Dec	Municipality	14-Dec	15-Dec	16-Dec
Aalmane Marjaayoun	VL	ML	L	Aamra	VL	M	L	Adayseh Marjaayoun	ML	M	L
Adchit El-Koussair	VL	M	L	Ain Aarab Marjaayoun	VL	M	L	Bani Haiyann	VL	M	L
Blatt Marjaayoun	VL	M	L	Blida	M	M	L	Borj El-Moulouk	VL	M	L
Boueyda Marjaayoun	VL	ML	L	Deir Mimass	VL	ML	L	Deir Siriane	VL	M	L
Dibbine	VL	M	L	Ebel El Saqi	VL	M	L	Houla	L	M	L
Houra	VL	ML	L	Kfar Kila	L	M	L	Khiam Marjaayoun	VL	M	L

Klayaa	VL	M	L	Majdel Selem	L	M	L	Marjaayoun	VL	M	L
Markaba	L	M	L	Mays El-Jabal	L	M	L	Mazraat Doumiat	VL	M	L
Mazraat Sarada	VL	M	L	Mhaibib	L	M	L	Qabrikha	VL	M	L
Qantara	VL	M	L	Rab El-Thalathine	L	M	L	Saouaneh Marjayoun	VL	M	L
Talloussa	VL	ML	L	Taybeh Matjaayoun	L	M	L	Touline	VL	M	L

Bent Jbail

Municipality	14-Dec	15-Dec	16-Dec	Municipality	14-Dec	15-Dec	16-Dec	Municipality	14-Dec	15-Dec	16-Dec
Ain-Ebel	L	M	L	Aitaroun	ML	M	L	Aynata Bint Jbeil	ML	M	L
Ayta El-Chaeb	VL	ML	L	Ayta El-Jabal	L	M	L	Beit Lif	VL	L	L
Beit Yahoun	L	M	L	Bint Jbeil	L	M	L	Borj Qalaway	VL	M	L
Braachit	L	M	L	Chakra	L	M	L	Debel	L	ML	L
Deir Antar	VL	M	L	Froun	VL	ML	L	Ghandouriyeh Bint Jb	VL	M	L
Hanine	L	M	L	Hariss	L	M	L	Hdatha	L	M	L
Jmeymeh	L	M	L	Kafra Bint Jbeil	VL	L	L	Kfar Dounine	VL	M	L
Khirbet Selm	VL	ML	L	Kounine	L	M	L	Maroun El Ras	ML	M	L
Qalaway	VL	M	L	Qaouzah	VL	L	L	Qatmoun	L	M	L
Ramya Bint Jbeil	VL	L	L	Rchaf	L	ML	L	Rmeich	L	M	L
Safad Al Battikh	L	M	L	Salhaneh	VL	L	L	Serbine	L	M	L
Sultanieh Bint Jbeil	L	M	L	Tibnine	L	ML	L	Tiri	L	ML	L
Yaroun	L	M	L	Yater	VL	ML	L				

Mont Liban

Jbail

Municipality	14-Dec	15-Dec	16-Dec	Municipality	14-Dec	15-Dec	16-Dec	Municipality	14-Dec	15-Dec	16-Dec
Aabeydat	VL	L	L	Aalita	VL	L	L	Aamchit	VL	M	L
Aarab El-Lahib	VL	L	VL	Aarasta	VL	L	VL	Adonis Jbeil	VL	L	L
Afqa Jbeil	VL	L	VL	Ain El Delbeh Jbeil	VL	L	VL	Ain El-Ghouayba	VL	L	VL
Ain Jrain	VL	L	VL	Ain Kfah	VL	ML	L	Almat El Chemaliyat	VL	L	VL
Almat El-Jenoubiya	VL	L	VL	Aqoura	VL	M	VL	Bayzoun	VL	L	VL
Bchille Jbeil	VL	L	L	Bechtlida	VL	L	VL	Behdaydat	VL	L	L
Beit Habbaq	VL	ML	L	Bejjeh	VL	ML	L	Bekhaaz	VL	ML	L
Berbara Jbeil	VL	M	L	Bintael	VL	L	L	Birket Hjoula	VL	L	L
Blatt Jbeil	VL	L	L	Boulhos	VL	L	VL	Breyj Jbeil	VL	L	L
Chamat	VL	ML	L	Chikhane	VL	M	L	Chmout	VL	L	L
Eddeh Jbeil	VL	ML	L	Ehmej	VL	L	VL	Fatre	VL	L	L
Ferhet	VL	L	L	Fghal	VL	L	L	Frat	VL	VL	VL
Ghabat	VL	L	VL	Ghalboun	VL	ML	L	Gharzouz	VL	ML	L
Ghofrine	VL	ML	L	Habil	VL	L	VL	Halate	VL	L	L
Haqel	VL	L	L	Hbaline	VL	ML	L	Hboub	VL	L	L
Hdeine	VL	L	VL	Hema Er-Rehban	VL	L	VL	Hema Mar Maroun Aann	VL	L	VL
Hjoula	VL	L	L	Hosrayel	VL	ML	L	Hsarat	VL	ML	L
Hsoun	VL	L	L	Jaj	VL	L	VL	Janne	VL	L	VL
Jbeil	VL	ML	L	Jeddeyl Jbeil	VL	M	L	Jlisse	VL	L	L
Jouret El-Qattine	VL	L	L	Kfar Baal Annaya	VL	L	L	Kfar Kidde	VL	ML	L
Kfar Kouas	VL	L	L	Kfar Mashoun	VL	ML	L	Kfoun	VL	L	L

Kharbe Jbeil	VL	L	L	Laqlouq	VL	L	VL	Lassa	VL	L	VL
Lehfed	VL	L	VL	Maad	VL	ML	L	Mar Sarkis	VL	L	VL
Mastita	VL	ML	L	Mayfouq	VL	L	VL	Mazraat El Siyad	VL	L	VL
Mazraat El-Maaden	VL	L	VL	Mechane	VL	L	L	Mechmech Jbeil	VL	L	VL
Mehrin	VL	ML	L	Mejdel El-Akoura	VL	ML	VL	Mghayreh Jbeil	VL	L	VL
Mounsef	VL	M	L	Nahr Ibrahim	VL	M	L	Qahmez	VL	L	VL
Qartaba	VL	L	VL	Qartaboun	VL	ML	L	Qattara Jbeil	VL	L	VL
Qorqraya	VL	VL	VL	Ramout	VL	ML	L	Ras Osta	VL	L	L
Rihane Jbeil	VL	M	L	Sakiet El-Khayt	VL	L	L	Saqi Richmaya	VL	L	VL
Sebrine	VL	L	L	Seraita	VL	L	VL	Souane Jbeil	VL	L	VL
Tadmor	VL	L	VL	Tartej	VL	VL	VL	Torzaiya	VL	L	VL
Yanouh Jbeil	VL	L	VL	Zibidine Jbeil	VL	L	L				

El Metn

Municipality	14-Dec	15-Dec	16-Dec	Municipality	14-Dec	15-Dec	16-Dec	Municipality	14-Dec	15-Dec	16-Dec
Aain El-Qabu	VL	L	VL	Aain El-Qach	VL	L	L	Aain El-Teffaha	VL	L	L
Aain el-Safsaf El-M	VL	L	L	Abou Mizane	VL	L	L	Ain Aar	VL	ML	L
Ain Alaq	VL	L	L	Ain El-Kharroube	VL	L	L	Ain El-Sendiane	VL	L	L
Ain El-Zeitoune	VL	L	VL	Ain Saadeh	VL	L	L	Aintoura El-Matn	L	ML	VL
Amaret Chalhoub	VL	M	ML	Antelias	L	M	L	Atchaneh	VL	L	L
Ayroun	VL	L	L	Baabdat	VL	L	L	Baouchariyeh	VL	M	L
Baskinta	VL	L	VL	Beit Chabab	VL	L	L	Beit El-Chaar	VL	M	L
Beit El-Kekko	VL	M	ML	Beit Mery	VL	L	L	Bhersaf	VL	L	L
Bikfaya	VL	L	L	Biyakout	VL	ML	L	Bnabil	VL	L	VL
Bourj Hammoud	VL	M	ML	Bqennaya	VL	ML	L	Broummana El-Matn	VL	L	L
Bsalim	VL	L	L	Bsifrine	VL	VL	VL	Bteghrine	VL	L	VL
Chaouiye	VL	L	L	Chouaya El-Matn	VL	L	L	Choueir	VL	L	L
Chrine	VL	L	L	Dahr El Sawan El-Mat	VL	L	L	Daychouniyeh	L	ML	L
Dbayeh	L	M	ML	Deir Chamra	VL	L	VL	Deir Mar Abda el Mch	VL	L	L
Deir Mar Roukouz	VL	M	L	Deir Tamiche	VL	L	L	Dik El-Mehdi	VL	ML	L
Dikwaneh	L	M	ML	Douar El-Matn	VL	L	L	Fanar	VL	ML	L
Fraike	VL	L	L	Haret El-Ballaneh	VL	ML	L	Hbous	VL	ML	L
Himlaya	VL	L	L	Jal El Did	VL	M	L	Jdeideh El-Metn	VL	M	L
Jouar El-Matn	VL	L	L	Jouret El-Ballout	VL	L	L	Kaaqour	VL	L	L
Kfar Aaqab	VL	L	VL	Kfertay El-Matn	VL	L	VL	Khenchara	VL	L	L
Khillet El-Mtain	VL	L	L	Konnabat Broummana	VL	L	L	Konnabat Salima	VL	VL	VL
Machraah El-Matn	VL	L	VL	Majdel Tarchich	L	M	VL	Majzoub	VL	ML	L
Mansouriyeh El-Metn	L	M	L	Mar Boutros Karm Et-	VL	L	L	Mar Chaya et Mzekke	VL	L	L
Mar Moussa Ed-Douar	VL	L	L	Marjaba	VL	L	VL	Masqa	VL	L	L
Mayasse	VL	L	L	Mazraat Deir Aoukar	VL	ML	L	Mazraat El-Hadirat	VL	ML	L
Mazraat Yachouh	VL	M	L	Mchikha	VL	L	L	Menqlet Mezher	VL	ML	L
Mhaydseh Matn	VL	L	L	Mkalles	VL	M	L	Mrouj	VL	L	VL
Mtain	L	M	VL	Mtayleb	VL	ML	L	Nabay	VL	L	L
Naccache	VL	ML	L	Ouadi Chahine	VL	L	L	Ouadi El-Karm El-Mat	VL	L	VL
Ouata El-Mrouj	VL	L	L	Ouyoun El-Matn	VL	L	VL	Qornet Chehwan	VL	L	L
Qornet El-Hamra	VL	L	L	Roumieh	VL	L	L	Sfeilet Bikfaya	VL	L	L
Sinn El-Fil	VL	M	ML	Zabbougha	VL	L	VL	Zalqa	VL	M	L

Zarouon	VL	L	L	Zekrite	VL	L	L	Zighrine El-Matn	VL	L	L
Zouk El-Khrab	L	M	L								

Chouf

Municipality	14-Dec	15-Dec	16-Dec	Municipality	14-Dec	15-Dec	16-Dec	Municipality	14-Dec	15-Dec	16-Dec
Aalmane El-Chouf	VL	M	L	Aammqi El-Chouf	VL	L	L	Ain Ouzein	VL	L	VL
Ain Qani	VL	L	VL	Ain Zhalta	VL	L	L	Ainbal	VL	L	L
Amatour	VL	L	L	Anout	VL	L	L	Atrine	VL	L	L
Baadarane	VL	L	L	Baaqline	VL	L	L	Baasir	VL	M	L
Barja	VL	M	L	Barouk	VL	L	VL	Bater	VL	L	VL
Batloun	VL	ML	L	Bayqoun	VL	ML	L	Bchetfine	VL	L	L
Beiteddine	VL	L	L	Benouati Ech-Chouf	VL	L	L	Berjein	VL	L	L
Bireh et Mtalleh	VL	L	VL	Biret El-Chouf	VL	ML	L	Bkechtine Ouel Mchei	VL	L	L
Bkifa El-Chouf	VL	ML	L	Botme	VL	L	VL	Bqaiaa Ech-Chouf	VL	L	L
Bsaba El-Chouf	VL	L	L	Chammis El-Chouf	VL	M	L	Chehim	VL	L	L
Chemaarine	VL	L	L	Chourit	VL	L	VL	Daher El-Chouf	VL	L	L
Dalhoun	VL	ML	L	Damour	VL	M	L	Daraya El-Chouf	VL	L	L
Deir El-Moukhalles	VL	L	L	Deir Baba	VL	L	L	Deir Dourit	VL	L	L
Deir El-Qamar	VL	L	L	Deir Kouche	VL	L	L	Dibbieh	VL	L	L
Dmit	VL	L	L	Fouara Jaafar	VL	L	VL	Fraidis El-Chouf	VL	ML	L
Ghabet Jaafar	VL	L	L	Gharife	VL	L	L	Haret Jandal	VL	L	L
Hasrout	VL	L	L	Jadra	VL	M	L	Jahlieh	VL	L	L
Jbeih El-Chouf	VL	L	L	Jdeidet El-Chouf	VL	L	VL	Jiyeh	VL	M	L
Jleilyeh	VL	ML	L	Jmailiyeh	VL	M	L	Joun	VL	ML	L
Kahlounie El-Chouf	VL	ML	L	Ketermaya	VL	M	L	Kfar Faqoud	VL	L	L
Kfar Hamal	VL	ML	L	Kfar Him	VL	L	L	Kfar Katra	VL	L	L
Kfar Niss	VL	L	L	Kfar hay	VL	L	L	Kfarnabrakh	VL	L	L
Khirbet Bisri	VL	L	L	Knayse El-Chouf	VL	L	L	Maaniyeh	VL	ML	L
Maasser Beiteddine	VL	L	VL	Maasser El-Chouf	VL	ML	L	Majdalouna	VL	ML	L
Majdel El-Meouch	VL	L	VL	Mazboud	VL	ML	L	Mazmoura	VL	L	L
Mazraat El Chouf	VL	L	L	Mazraat El Daher	VL	L	L	Mazraat El-Douair	VL	L	VL
Mechref	VL	ML	L	Mghairie	VL	M	L	Mghayrie El-Chouf	VL	L	L
Moukhtara	VL	L	VL	Mrusti	VL	ML	L	Mtolle	VL	L	L
Naameh	VL	M	L	Niha El-Chouf	VL	ML	L	Ouadi Abou Youssef	VL	VL	VL
Ouadi Ed-Deir	VL	ML	L	Ouadi El-Sit	VL	L	L	Ouadi bnehlay	VL	L	L
Qraibeh	VL	L	L	Qreiaa	VL	L	VL	Rmayle El-Chouf	VL	M	L
Semqaniyeh	VL	ML	L	Sibline	VL	M	L	Sirjbeil	VL	L	L
Warhanieh	VL	L	L	Werdaniyeh	VL	M	L	Zaarourieh	VL	L	L

Baabda

Municipality	14-Dec	15-Dec	16-Dec	Municipality	14-Dec	15-Dec	16-Dec	Municipality	14-Dec	15-Dec	16-Dec
Abadiyeh	VL	L	L	Ain Mouaffaq	VL	L	L	Araiya	VL	L	L
Arbaniyeh	VL	VL	VL	Arsoun	VL	L	L	Baabda	VL	ML	L
Baalchmey	VL	L	L	Bmaryam	VL	L	L	Bourj El-Brajneh	L	M	ML
Boutchay	VL	L	L	Bsaba Baabda	VL	ML	L	Btekhney	VL	L	L
Btibyat	VL	L	VL	Bzebdine	VL	L	L	Chbeniyeh	VL	L	L
Chiyah	L	M	ML	Chmeisset Baabda	VL	L	VL	Chouit	VL	L	L
Deir El-harf	VL	L	L	Deir Khouna	VL	L	L	Dlaybeh	VL	VL	VL

Falougha	L	M	L	Furn El-Chebbak	VL	M	ML	Hadath Beyrouth	VL	M	ML
Halaliyeh Baabda	VL	L	L	Hammana	VL	M	L	Haret El Sett	VL	L	L
Haret Hamze	VL	L	L	Haret Hreik	L	M	ML	Hasbaiya El-Metn	VL	VL	VL
Jouar El-Hoz	VL	L	VL	Jouret Arsoun	VL	L	L	Kfar Chima	VL	ML	L
Kfar Selouane	VL	L	VL	Khalouat Baabda	VL	L	L	Kneisset Baabda	VL	L	VL
Laylakeh	VL	M	ML	Louayzeh Baabda	VL	ML	L	Merdache	VL	ML	L
Mzairaa Baabda	VL	L	L	Ouadi Chahrour El Ol	VL	L	L	Ouadi Chahrour El So	VL	L	L
Qalaa Baabda	VL	L	L	Qhraybe Baabda	VL	L	L	Qobbayaa	VL	L	L
Qornayel	VL	L	VL	Qortada	VL	VL	VL	Qrayeh Baabda	VL	L	L
Qsaibeh Baabda	VL	L	L	Qtale Baabda	VL	L	L	Ras El Metn	VL	L	L
Ras El-Haref	VL	L	L	Rouayset El-Ballout	VL	L	L	Salima Baabda	VL	L	L
Tahouitat El Ghadir	L	M	ML	Tarchich	L	M	VL	Zandouqa	VL	VL	L

Aley

Municipality	14-Dec	15-Dec	16-Dec	Municipality	14-Dec	15-Dec	16-Dec	Municipality	14-Dec	15-Dec	16-Dec
Abey	VL	L	L	Aghmid	VL	L	L	Ain Dara	L	M	L
Ain Drafil	VL	L	L	Ain El Halazoun	VL	L	L	Ain El-Rmmaneh	VL	L	L
Ain Jedideh	VL	L	L	Ain Ksour	VL	L	L	Ain Onoub	VL	L	L
Ain Traz	VL	L	L	Ainab	VL	L	L	Aley	VL	L	L
Aramoun	VL	ML	L	Aytat	VL	ML	L	Azouniyeh	VL	L	L
Baawerta	VL	ML	L	Badghan Oua Wadi Bad	VL	L	L	Bassatine	VL	L	L
Bayssour	VL	L	L	Bchamoun	VL	L	L	Bdadoun	VL	L	L
Behouara	VL	L	L	Bennay	VL	L	L	Bhamdoun El-Dayaa	VL	ML	L
Bhamdoun El-Mhatta	VL	ML	L	Bkhechthey	VL	L	L	Bleibel	VL	L	L
Bmakine	VL	ML	L	Bmehray	L	ML	L	Bouzrid	VL	L	L
Bserrine	VL	L	L	Bsous	VL	L	L	Btalloun	VL	ML	L
Btater	VL	L	L	Chanay	VL	ML	L	Charoun	VL	ML	L
Chartoun	VL	L	L	Chemlane	VL	L	L	Choueifat El-Aamrous	VL	M	ML
Choueifat El-Oumara	VL	M	L	Choueifat El-Quoubbe	VL	M	L	Dakkoun	VL	L	L
Deir Qoubel	VL	L	L	Dfoun	VL	ML	L	Douair El Remmaneh	VL	L	L
Ghaboun	VL	L	L	Habramoun	VL	L	L	Homs Oua Hama	VL	L	L
Houmal	VL	L	L	Jisr El Qadi	VL	L	L	Kehaleh	VL	L	L
Keyfoun	VL	ML	L	Kfar Aamey	VL	L	L	Kommatyeh	VL	L	L
Maasrati	VL	L	L	Majdel Baana	VL	L	L	Mansourieh et Ain El	VL	ML	L
Mazraat El-Nahr	VL	L	L	Mchakhte	VL	L	L	Mecherfeh	VL	L	L
Mejdaya	VL	L	L	Mrayjat	VL	L	L	Ramliyah	VL	L	L
Rechmaya	VL	L	L	Rejmeh	VL	L	L	Remhala	VL	L	L
Rouaysset El Neemane	VL	L	L	Saoufar	VL	L	L	Selfaya	VL	L	L
Sirhmoul	VL	L	L	Souq El Ghareb	VL	L	L	Taazanieh	VL	ML	L

Kesrouane

Municipality	14-Dec	15-Dec	16-Dec	Municipality	14-Dec	15-Dec	16-Dec	Municipality	14-Dec	15-Dec	16-Dec
Achkout	VL	L	L	Adma Oua Dafneh	VL	ML	L	Ain Ed-Delbe Kesroua	VL	L	VL
Ain El-Rihane	VL	L	L	Aintoura Kesrouane	VL	ML	L	Ajaltoun	VL	L	L
Akaybeh Kesrouane	L	M	L	Aramoun Kesrouane	VL	L	L	Azra ouel Ozor	VL	L	L
Ballouneh	VL	L	L	Batha	VL	L	L	Bekaatat Achkout	VL	L	L
Bekaatat Kanaan	VL	L	VL	Bizhel	VL	L	L	Bouar	VL	ML	L
Bqaatouta	VL	L	VL	Bqaq Ed-Dine	VL	ML	L	Bzommar	VL	L	L

Chahtoul	VL	L	L	Chnaniir	VL	L	L	Chouan	VL	L	VL
Daraya Kesrouane	VL	L	L	Darououn	VL	L	L	Deir Baqlouch	VL	L	L
Dlebta	VL	L	L	Eghbeh	VL	VL	VL	Faraya	VL	L	VL
Fatka	L	L	L	Feytroun	VL	L	L	Ghazir	L	L	L
Ghbaleh Kesrouane	VL	L	L	Ghedrass	VL	L	L	Ghosta	VL	L	L
Ghyneh	VL	L	L	Harharaya w Kattine	VL	L	L	Harissa Kesrouane	VL	L	L
Hayata	VL	L	L	Hosein	VL	L	L	Hrajel	VL	L	VL
Jdeideh Ghazir	L	L	L	Jeita	VL	L	L	Jounieh Ghadir	VL	ML	L
Jounieh Haret Sakhr	VL	M	L	Jounieh Salel Alma	VL	ML	L	Jounieh Sarba	VL	M	ML
Jouret Bedrane	VL	L	L	Jouret Mhad	VL	L	L	Jouret Termos	VL	L	L
Kfar Debiane	VL	L	VL	Kfar Tay Kesrouane	VL	VL	VL	Kfar Yassine	VL	M	L
Kfour Kesrouane	L	L	L	Kharayeb Nahr Ibrahi	VL	L	L	Klayaat Kesrouane	VL	L	L
Maarab	VL	VL	L	Maaysra Kesrouane	VL	L	L	Mayrouba	VL	L	VL
Mazraat Er-Ras	VL	ML	L	Mazraat Mrah El-Mir	VL	L	L	Mchaa El Ftouh	VL	M	VL
Mchaa Faraya	VL	L	VL	Mchaa Kfar Dibiane	L	M	VL	Mghaer	VL	VL	VL
Mradiyah	VL	L	L	Nahr Ed-Dahab	VL	VL	VL	Nammoura Kesrouane	VL	L	L
Ouata El Jaouz	VL	L	VL	Ouata Sillam	VL	M	ML	Raachine	VL	L	L
Rayfoun	VL	L	L	Safra Kesrouane	VL	M	L	Shayle Kesrouane	VL	L	L
Tabarja	VL	M	L	Yahchouch	VL	L	L	Zaaytreh	VL	L	L
Zeytoun	VL	L	L	Zouk Mikael	VL	M	L	Zouk Mosbeh	VL	M	L

Baalbek_Hermel

Baalbek

Municipality	14-Dec	15-Dec	16-Dec	Municipality	14-Dec	15-Dec	16-Dec	Municipality	14-Dec	15-Dec	16-Dec
Aadous	ML	M	VL	Aamchki	L	M	VL	Aarsal	ML	M	L
Ain Baalbek	M	H	L	Ain Bourday	VL	L	VL	Ain El-Benye	L	M	VL
Ain El-Jaouz Baalbek	L	M	L	Ain El-Siya Chadoura	L	M	VL	Al Khodr Baalbek	L	M	VL
Al Nabi Chit	L	M	VL	Aynata Baalbek	VL	M	VL	Baalbek	L	M	VL
Bachwat	VL	ML	VL	Barqa	VL	ML	VL	Bednayel Baalbak	L	M	VL
Beit Chama	L	M	VL	Bijjaje	M	H	L	Bouday	L	M	VL
Brital	VL	ML	VL	Btadi	L	M	VL	Chaat	ML	M	L
Chaibe	L	M	VL	Chlifa	L	M	VL	Chmestar	L	M	L
Dar El-Oussa	VL	M	VL	Deir El-Ahmar	L	M	VL	Deir Mar Maroun Baal	L	M	ML
Douris	VL	M	VL	Fakiha	M	MH	L	Hadath Baalbek	L	ML	VL
Ham	L	M	VL	Haour Taala	VL	M	VL	Hizzine	L	ML	VL
Hlebta	VL	M	L	Hosh Barada	L	M	VL	Hosh El Dahab	ML	M	VL
Hosh El Snid	L	M	VL	Hosh El-Nabi	L	M	VL	Hosh El-Rafiq	L	M	VL
Hosh Tal Safiya	L	M	VL	Hrebta	L	M	L	laat	ML	M	VL
Jebaa	L	M	L	Jenta	L	M	VL	Kfar Dabach	L	M	VL
Kfar Dane	L	ML	VL	Khraibeh El-Hermel	L	M	L	Khreibet Baalbek	L	M	VL
Kneisset Baalbek	ML	M	VL	Labueh	M	MH	L	Maarboun	L	M	VL
Majdaloun	L	M	VL	Maqneh	L	M	VL	Mazraat Beit Mcheik	VL	M	VL
Misraya	L	M	VL	Moqraq	M	M	L	Nabha El-Damdoum	L	M	L
Nabi Chbay	VL	L	VL	Nabi Osman	M	MH	L	Nahleh baalbek	L	M	VL
Ouadi El-Oss	VL	M	L	Qaa Baayoun	L	M	ML	Qaa Jouar Maqiye	ML	M	ML
Qaa Ouadi El-Khanzir	M	M	ML	Qah Baalbek	L	M	ML	Qarha Baalbek	L	M	VL

Qsarnaba	L	M	VL	Ram Baalbek	L	M	VL	Ras Baalbek El Sahl	L	MH	ML
Ras Baalbek El-Charq	ML	M	L	Riha	ML	M	VL	Saaide	L	M	VL
Sbouba	ML	M	L	Seriine El-Tahta	L	M	VL	Slouqi	L	M	VL
Taiba Baalbek	L	M	VL	Talia	L	M	VL	Taraiya	L	M	L
Temnin El Fawqa	L	M	VL	Temnin El-Tahta	L	M	VL	Tfail	L	M	L
Yahfoufa	VL	ML	VL	Yammouneh	VL	M	VL	Younine	L	M	L
Zboud	ML	M	L								

Hermel

Municipality	14-Dec	15-Dec	16-Dec	Municipality	14-Dec	15-Dec	16-Dec	Municipality	14-Dec	15-Dec	16-Dec
Charbine El-Hermel	VL	M	L	Hermel Jbab	VL	M	ML	Hermel	ML	M	ML
Maaysra El-Hermel	VL	M	L	Michaa Mrjihine	VL	M	L	Ouadi Faara	VL	ML	L
Ras Baalbek - Ouadi	L	M	ML	Ras Baalbek El Gharb	VL	ML	L	Zighrine	VL	ML	L

Akkar

Akkar

Municipality	14-Dec	15-Dec	16-Dec	Municipality	14-Dec	15-Dec	16-Dec	Municipality	14-Dec	15-Dec	16-Dec
Aain Tinta	ML	M	ML	Aaiyat	L	M	L	Aakkar El-Aatiqa	L	M	L
Aamar Akkar	L	M	ML	Aamar El Baykat	ML	M	ML	Aamayer	M	M	L
Aamriyet Akkar	ML	M	ML	Aandqet	L	M	L	Aarmeh	L	M	L
Aarqa	L	M	ML	Aawaynat	ML	M	ML	Aayoun Akkar	L	M	L
Abboudiye	ML	M	ML	Ain El-Zeit	M	M	ML	Ain Yaaqoub	L	M	L
Akroum	L	M	L	Aridet Cheikh Zennad	L	M	ML	Baldeh w Mazraat Bal	L	M	L
Barcha	ML	M	ML	Bardeh	ML	M	ML	Bebnine	VL	M	ML
Beino	L	M	L	Beit Ayoub	L	M	ML	Beit El-Haouch	VL	M	ML
Beit Mellat	L	M	L	Beit Younes	L	M	L	Berbara Akkar	L	M	ML
Berqayel	VL	M	ML	Bezbina	L	M	L	Bireh Akkar	ML	M	ML
Borj	L	M	ML	Bqerezla	L	M	ML	Bzal	VL	M	L
Chane	L	M	L	Chaqdouf	L	M	L	Charbila	L	M	ML
Cheikh Mohammad	L	M	ML	Cheikh Taba Es-Sahl	L	M	ML	Cheikh Taba	L	M	L
Cheikh Zennad	L	M	ML	Cheikhlar	ML	M	ML	Chir Hmairine	L	M	ML
Daghle	L	M	ML	Dahr Laissine	L	M	ML	Darine	L	M	ML
Dawra	L	M	L	Dawsa w Baghdadi	ML	M	ML	Dayret Nahr El-Kabir	M	M	ML
Deir Dalloum	L	M	ML	Deir Jennine	L	M	L	Denbou	VL	M	L
Dibbabiyyeh	M	M	ML	Douair Aadwiyeh	L	M	ML	Fassikine	L	M	ML
Fnaydek	VL	M	L	Fraydes Akkar	ML	M	ML	Ghazayle	L	M	ML
Habchit	VL	M	L	Hakour	L	M	L	Halba	L	M	ML
Haouchab	L	M	ML	Hayssat	L	M	ML	Haytla	ML	M	ML
Hayzouq	L	M	L	Hedd	L	M	L	Hmaira Akkar	VL	M	ML
Hmaiss Akkar	L	M	ML	Hnaider	M	M	ML	Hokr Ed-Dahri	L	M	ML
Hokr Etti	L	M	ML	Hokr Jouret Srar	L	M	ML	Houaich	L	M	L
Hrar	L	M	L	Idbil	L	M	L	Ilal	L	M	ML
Janine	ML	M	ML	Jdeidet El-Joumeh	L	M	ML	Jdeidet El-Kaiteh	VL	M	ML
Jebayel	L	M	ML	Kafr	VL	L	L	Kafr	M	M	ML
Karm Asfour	L	M	L	Kfar Melki Akkar	L	M	ML	Kfar Noun	L	M	L
Kfarharra	L	M	ML	Khalsa	ML	M	ML	Kharnoubet Akkar	ML	M	ML

Khirbet Daoud Aakkar	ML	M	ML	Khirbet El Remmane	ML	M	L	Khirbet Shar	L	M	ML
Khoreybet El-Jindi	L	M	ML	Khreibet Aakkar	L	M	L	Kneisset Aakkar	L	M	ML
Kneisset Hnaider	M	M	ML	Knisse	L	M	ML	Kroum El-Aarab	L	M	ML
Kwachra	M	M	ML	Kweykhath	L	M	ML	Machta Hammoud	M	M	ML
Majdala	VL	M	ML	Majdel Akkar	L	M	ML	Mar Touma	VL	M	ML
Marlaya Melhem	L	M	ML	Mashha	L	M	L	Massoudiye	L	M	ML
Mazraat Beit Ghattas	L	M	ML	Mazraat En-Nahriye	L	M	L	Mechmech	VL	M	L
Memneh	VL	L	L	Mhammara	VL	M	ML	Mighraq Aakkar	L	M	ML
Minyara	L	M	ML	Moqayteh	L	M	ML	Mounjez	ML	M	L
Msalla	ML	M	ML	Mzeihmeh	ML	M	ML	Nfaisheh	L	M	ML
Noura Et-Tahta	ML	M	ML	Ouadi El-Haour	ML	M	ML	Ouadi El-Jamous	VL	M	ML
Ouyoun El-Ghizlane	VL	M	ML	Qaabarine	L	M	ML	Qabaait	VL	M	L
Qachlaq	ML	M	ML	Qantara Aakkar	L	M	ML	Qarha Aakkar	M	M	ML
Qarqaf	VL	M	ML	Qboula	L	M	L	Qleiaat Aakkar	L	M	ML
Qloud El-Baqie	VL	M	ML	Qobaiyat Aakkar	L	M	L	Qobbat Chamrat	L	M	ML
Qorayat	L	M	L	Qornet Aakkar	L	M	L	Qsair Aakkar	ML	M	ML
Rahbe	L	M	L	Rihaniyet Aakkar	L	M	ML	Rmah	ML	M	L
Rmoul	L	M	ML	Saadine	L	M	ML	Sadaqa	L	M	ML
Saidnaya	ML	M	ML	Sammouniye	L	M	ML	Sayssoq	L	M	ML
Semmaqiye	L	M	ML	Semmaqli	L	M	ML	Sfinet El-Dreib	L	M	ML
Sfinet El-Qaitaa	VL	M	L	Sindyanet Zeidane	L	M	L	Souaisset Aakkar	L	M	L
Srar	ML	M	ML	Tal Abbas El Gharby	L	M	ML	Tal Abbas El-Chargy	L	M	ML
Tal Biret	L	M	ML	Tal Hmayra	L	M	ML	Tal Maayan Tal Kiri	L	M	ML
Tal Sibel	L	M	ML	Tallet Chattaha	L	M	L	Tikrit	L	M	L
Tleil	ML	M	ML	Tshea	L	M	L	Zawarib	L	M	L
Zouq El Hosniyeh	L	M	L	Zouq El-Haddara	VL	M	ML	Zouq El-Hbalsa	VL	M	ML
Zouq El-Moqachrine	VL	M	ML								

Sud

Sour

Municipality	14-Dec	15-Dec	16-Dec	Municipality	14-Dec	15-Dec	16-Dec	Municipality	14-Dec	15-Dec	16-Dec
Aaiyeh	VL	M	L	Aalma El-Chaab	VL	ML	L	Aaytit	VL	M	L
Abbassiyeh Sour	L	M	L	Abou Chech	L	ML	L	Ain Abou Abdallah	L	M	L
Ain Baal	VL	M	L	Arzoun	VL	M	L	Aziyeh	VL	ML	L
Baflaya	VL	M	L	Barich	VL	M	L	Batouliyeh	VL	M	L
Bayad	VL	M	L	Bazouriyeh	VL	M	L	Bediass	VL	M	L
Bestiyat	VL	M	L	Borj El Chemali	L	M	L	Borj En-Naqoura	L	M	L
Borj Rahhal	L	M	L	Boustane	VL	M	L	Btaychiyeh	L	ML	L
Chaaitiye	VL	M	L	Chameh	VL	ML	L	Chehabiye	VL	M	L
Chehour	VL	L	L	Chihine	VL	ML	L	Debaal Sour	VL	M	L
Deir Amess	VL	ML	L	Deir Kifa	VL	M	L	Deir Qanoun El-Ain	L	M	L
Deir Qanoun El-Naher	VL	M	L	Derdghaiya	VL	M	L	Dhayra	VL	ML	L
Halloussiyeh	VL	M	L	Hamoul	VL	L	L	Hanaouey	VL	M	L
Henniye	L	M	L	Hmairi Sour	VL	M	L	Iskandarouna Sour	VL	M	L
Jbal El Botom	VL	ML	L	Jebbin	VL	M	L	Jennata	VL	M	L
Jijim	VL	L	L	Jouaiya	VL	M	L	Kneisset Sour	L	M	L

Maarake	VL	M	L	Maaroub	VL	M	L	Majadel	VL	M	L
Majdalzoun	VL	ML	L	Mansouri Sour	L	M	L	Marnba	VL	L	L
Marouahine	VL	ML	L	Mazraat El-Zalloutiy	VL	M	L	Mazraat Mechref	VL	M	L
Mazraat Tayr Semhat	VL	L	L	Mheilib	L	M	L	Neffakhiyeh	VL	M	L
Niha Sour	VL	M	L	Ouadi Jilo	VL	M	L	Qana	VL	M	L
Qolaileh Sour	L	M	L	Rechknany	VL	ML	L	Rmadiyeh	L	M	L
Selha Sour	VL	M	L	Siddiqine	VL	M	L	Sour	L	M	L
Srifa	VL	ML	L	Tayr Debbe	L	M	L	Tayr Felsay	VL	M	L
Tayr Harfa	VL	ML	L	Touayri	VL	L	L	Toura	VL	M	L
Yanouh Sour	VL	M	L	Yarine	VL	M	L	Zebqine	VL	L	VL

Saida

Municipality	14-Dec	15-Dec	16-Dec	Municipality	14-Dec	15-Dec	16-Dec	Municipality	14-Dec	15-Dec	16-Dec
Aanqoun	VL	M	L	Aaqtanit	VL	M	L	Aarab Ej-Jall	VL	M	L
Aarab Tabbaya	VL	M	L	Abra Saida	VL	M	L	Adloun	L	M	L
Adousiyeh	L	M	L	Ain-El-Deleb	VL	M	L	Arzai	VL	M	L
Babliyeh	VL	M	L	Barty	VL	ML	L	Bissariyeh	L	M	L
Bnaafoul	VL	M	L	Bqosta	VL	M	L	Bramiy --	VL	M	L
Daoudiyeh	VL	M	L	Dareb El-Sim	VL	M	L	Erkay	VL	M	L
Ghassanieh	VL	M	L	Ghazieh	L	M	L	Hajjeh	VL	M	L
Haret Saida	VL	M	L	Hartiyeh	L	M	L	Hlaliye Saida	VL	M	L
Insariyat	L	M	L	Jazira Saida	L	M	L	Kafar Bit	VL	M	L
Kaoutariyet El-Siyad	VL	M	L	Kfar Chellal	VL	ML	L	Kfar Hatta Saida	VL	M	L
Kfar Milke Saida	VL	M	L	Khartoum	VL	M	L	Khaziz	VL	M	L
Khirbet Ed-Douair Sa	VL	M	L	Khirbet El-Bassal	VL	M	L	Khrayeb Saida	L	M	L
Loubieh	L	M	L	Maghdouche	VL	M	L	Majdelyoun	VL	M	L
Matariyet El-Choumar	L	M	L	Matayriyeh	VL	M	L	Mazraat 'Mseileh	L	M	L
Mazraat 'Snaiber	L	M	L	Mazraat Aarab Soukka	VL	M	L	Mazraat Deir Taqla	VL	M	L
Mazraat El Yahoudiye	L	M	L	Mazraat El-Housseini	L	M	L	Mazraat El-Mhaydaleh	VL	M	L
Mazraat El-Ouasta	L	M	L	Mazraat Jamjim	L	M	L	Mazraat Kaoutariyet	VL	M	L
Mazraat Kfar Badda	L	M	L	Mazraat Oussamiyat	VL	M	L	Mazraat Sari	L	M	L
Mazraat Sinai	VL	M	L	Meemariyeh	VL	M	L	Merouaniyeh	VL	M	L
Miyeh ou Miyeh	VL	M	L	Najjariyeh	L	M	L	Qaaqaiyat El-Snaouba	VL	M	L
Qnarit	VL	M	L	Qraiye Saida	VL	M	L	Saida Ed-Dekermane	VL	M	L
Saida El-Oustani	VL	M	L	Saida El-Qadimeh	VL	M	L	Saida Kefraya	VL	ML	L
Saksakiyeh	L	M	L	Salhie Saida	VL	M	L	Sarafand	L	M	L
Sfenta	VL	L	L	Tafahta	VL	M	L	Tanbourit	VL	M	L
Tebna	VL	M	L	Zaghdraiya	VL	M	L	Zeita	VL	M	L
Zrariyeh	VL	M	L								

Jezzine

Municipality	14-Dec	15-Dec	16-Dec	Municipality	14-Dec	15-Dec	16-Dec	Municipality	14-Dec	15-Dec	16-Dec
Ain El-Mir (El Estab	VL	M	L	Anane	VL	L	L	Aramta	VL	M	L
Ariya	VL	L	VL	Aychiyeh	VL	ML	L	Azour	VL	L	L
Baba	VL	L	L	Baysour Jezzine	VL	M	L	Benoueteh Jezzine	VL	L	L
Bhannine	VL	L	VL	Bisri	VL	L	L	Bkassine	VL	L	L
Bouslaya	VL	L	L	Btedine El-Leqech	VL	L	L	Chbail	VL	L	VL
Choualiq Jezzine	VL	ML	L	Dahr Ed-Deir	VL	L	L	Deir El Qattine	VL	L	L

Demachqiyeh	VL	M	L	Ghabbatiyeh	VL	L	L	Harf Jezzine	VL	L	L
Hassaniyeh	VL	ML	L	Haytouleh	VL	ML	L	Haytura	VL	L	L
Hidab	VL	L	L	Homsiyeh	VL	L	L	Jabal Toura	VL	M	L
Jarmaq	VL	M	L	Jensnaya	VL	M	L	Jernaya	VL	M	L
Jezzine	VL	ML	L	Karkha	VL	ML	L	Kfar Falous	VL	ML	L
Kfar Houna	VL	M	L	Kfar Jarrah	VL	M	L	Lebaa	VL	M	L
Louayzet Jezzine	VL	ML	L	Machmouche	VL	L	L	Mahmoudiyeh Jezzine	VL	M	L
Maknounye Jezzine	VL	L	L	Maraat Ouazaiyeh	VL	ML	L	Mazraat Daraya	VL	ML	L
Mazraat El-Aarqoub	VL	ML	L	Mazraat El-Mathane	VL	L	VL	Mazraat El-Rahbane	VL	L	L
Mazraat Khallet Khaz	VL	ML	L	Mazraat Louzid (Loua	VL	L	VL	Mazraat Qrouh	VL	M	L
Mazraat Tamra	VL	M	L	Mazraat Zighrine Jez	VL	ML	L	Mazraat	VL	L	L
Mharbiyeh	VL	M	L	Midane Jezzine	VL	L	L	Mjeydel Jezzine	VL	M	L
Mlikh	VL	ML	L	Mrach El-Hbasse	VL	M	L	Ouadi Baanqoudaine	VL	M	L
Ouadi El-Laymoun	VL	M	L	Ouardiyeh	VL	VL	VL	Qabaa Jezzine	VL	L	L
Qatrani	VL	ML	L	Qaytouleh	VL	L	L	Qtaleh Jezzine	VL	L	L
Rihane Jezzine	VL	M	L	Rimat	VL	L	L	Roum	VL	L	L
Roummanet	VL	ML	L	Sabbah	VL	L	L	Saydoun	VL	L	L
Sfaray	VL	L	L	Snaya	VL	L	L	Sojoud	VL	ML	L
Srayri	VL	M	L	Taaid	VL	L	L	Wadi Jezzine	VL	L	L
Zhalta	VL	L	L								

Bekaa

West Bekaa

Municipality	14-Dec	15-Dec	16-Dec	Municipality	14-Dec	15-Dec	16-Dec	Municipality	14-Dec	15-Dec	16-Dec
Aammiq BG	L	M	L	Ain El Tineh BG	VL	M	L	Ain Zebdeh	L	M	L
Ana	L	M	L	Aytanit	L	ML	L	Baaloul BG	L	M	L
Bab Mareh	L	M	L	Chouberqiye Aammiq	L	M	L	Dakoue	L	M	L
Deir Ain El-Jaouze	L	M	L	Deir Tahniche	L	M	L	Ghaza	L	M	L
Harime El-Soughra	L	M	L	Hoch Harimeh	L	M	L	Jazira BG	L	M	L
Jib Jennine	L	M	L	Kamed-El-Laouz	L	M	L	Kefraya BG	L	M	L
Khiara El Atika	L	M	L	Khiara	L	M	L	Khirbet Qanafar	L	M	L
Lala	L	M	L	Lebbaya BG	VL	M	L	Loussa	VL	M	L
Machghara	L	M	L	Manara (Hammar) BG	VL	ML	L	Mansoura BG	L	M	L
Marej BG	L	M	L	Maydoun	VL	M	L	Ouaqf BG	L	M	L
Qaraaoun	L	M	L	Qelya	VL	ML	L	Raouda (Istabel)	L	M	L
Saghbine	L	M	L	Sohmor	VL	M	L	Soltan Yacoub el Ara	L	M	L
Souairy	L	M	L	Sultan Yaacoub	L	M	L	Tal Znoun	L	M	L
Yehmor BG	VL	M	L	Zilaya	VL	L	VL				

Zahle

Municipality	14-Dec	15-Dec	16-Dec	Municipality	14-Dec	15-Dec	16-Dec	Municipality	14-Dec	15-Dec	16-Dec
Aanjar (Haouch Mouss	L	M	L	Ablah	L	M	VL	Ain Kfarzabad	L	ML	VL
Ali-El-Nahri	L	M	VL	Bar Elias	L	M	VL	Bouarej	L	M	L
Cheberqiyet Tabet	L	M	L	Chtaura	L	M	L	Deir El Ghazal	L	ML	VL
Delhamiyet Zahle	L	M	VL	Ferzol	L	M	VL	Haouch El-Ghanam	L	M	VL
Haouch Es-Siyadeh	L	M	L	Haouch Hala	L	M	VL	Haouch Mandara	L	M	L

Haouch Qayssar	L	M	L	Hezerta	L	M	VL	Hosh Moussa	L	M	VL
Jdita	L	M	L	Kfarzabad	L	M	VL	Ksara	VL	M	VL
Majdel Aanjar	L	ML	L	Makssi	L	M	L	Massa	L	M	VL
Mazraat Er-Remtaniye	L	M	L	Mrayjat Zahle	L	M	L	Mzaraa Zahle	L	M	L
Nabi Ayla	L	M	VL	Nasriyet Rizk	L	M	VL	Nasriyet Zahle	L	M	L
Niha Zahle	L	M	VL	Ouadi Ed-Deloum	L	M	VL	Ouadi El-Arayech	L	M	VL
Qaa El Rim	L	M	VL	Qab Elias	L	M	L	Qousaya	L	ML	VL
Rhit	L	M	VL	Riyak	L	M	VL	Saadnayel	L	M	L
Taal El-Akhdar	L	M	L	Taalbeya	L	M	L	Taanayel	L	M	L
Talamara	L	M	VL	Tcheflik Edde Haouch	L	M	L	Tcheflik Qiqano	L	M	L
Terbol Zahle	L	M	VL	Touaite Zahle	L	M	VL	Zahle Aradi	L	M	VL
Zahle El-Berbara	L	M	VL	Zahle El-Maallaqa	L	M	VL	Zahle El-Midane	L	M	VL
Zahle Er-Rassiye	L	M	VL	Zahle Haouch El-Ouma	VL	M	VL	Zahle Haouch El-Ouma	L	M	VL
Zahle Haouch Ez-Zara	L	M	VL	Zahle Maalaqa Aradi	L	M	VL	Zahle Mar Antonios	L	M	VL
Zahle Mar Elias	L	M	VL	Zahle Mar Gerios	L	M	VL	Zahle Saydet En-Naja	L	M	VL
Zebdoul	L	M	L								

Rachaiya

Municipality	14-Dec	15-Dec	16-Dec	Municipality	14-Dec	15-Dec	16-Dec	Municipality	14-Dec	15-Dec	16-Dec
Ain Arab Rachaiya	L	M	L	Ain Ata	VL	L	L	Ain Harche	VL	L	L
Aqabe Rachaya	VL	M	L	Ayha	L	M	L	Ayta El Fokhar	L	M	L
Bakifa Rachaya	VL	ML	L	Bakka	L	M	L	Beit Lahya	VL	M	L
Bireh Rachaiya	L	M	L	Daher El Ahmar	VL	M	L	Deir El-Achayer	L	M	L
Heloua Rachaiya	L	M	L	Hoch El Qannabeh Rac	VL	ML	L	Kaoukaba Bou Arab	VL	ML	L
Kfar Danis	VL	M	L	Kfar Mechki	VL	M	L	Kfar Qouq	VL	M	L
Kherbet Rouha	VL	M	L	Majdel Balhiss	L	M	L	Mdoukha	L	M	L
Mhaydseh Rachaiya	VL	M	L	Nabi Safa	VL	ML	L	Rachaiya	L	M	L
Rafid Rachaiya	L	M	L	Selsata (Mazraat Dei	VL	ML	VL	Tannoura	VL	ML	L
Yanta	L	M	L								

Beyrouth

Beyrouth

Municipality	14-Dec	15-Dec	16-Dec	Municipality	14-Dec	15-Dec	16-Dec	Municipality	14-Dec	15-Dec	16-Dec
Achrafieh	L	M	ML	Ain el-Mreisse	ML	M	ML	Bachoura	L	M	ML
Beirut Central Distr	L	M	ML	Marfai	L	M	ML	Mazraa	L	M	ML
Medaouar	L	M	ML	Minet el-Hosn	ML	M	ML	Mwssaitbeh	L	M	ML
Ras Beirut	L	M	ML	Rmeil	VL	M	ML	Saifi	L	M	ML
Zqaq el-Blat	L	M	ML								



نشرة الطقس الصادرة عن دائرة التقديرات في مصلحة الأرصاد الجوية

النشرة: المسائية

الثلاثاء: ١٣ كانون الأول ٢٠١٦

الحالة العامة: يشهد تأثير المنخفض الجوي العاصف "سوزي" على الحوض الشرقي للمتوسط بدءاً من فجر الأربعاء. **الطقس المتوقع في لبنان:**

الأربعاء: ممطر وعاصف صباحاً مع ارتفاع موج البحر لحدود (خمسة أمتار خاصة في الجنوب)، كما تنخفض درجات الحرارة بشكل ملحوظ وتتساقط الثلوج لتلامس 800 متر خاصة في الشمال ليلاً. (تحتذر من تكون الجليد على الطرقات الجبلية والداخلية ليلاً وساعات الصباح الأولى ليوم الخميس).

الخميس: غائم جزئياً مع أمطار خفيفة وثلوج متفرقة على 800م صباحاً تتخلله انفراجات واسعة دون تعديل يذكر بدرجات الحرارة، تعود الأمطار والثلوج ليلاً.

الجمعة: غائم مع أمطار متفرقة، كما ترتفع درجات الحرارة بشكل محدود وتتساقط الثلوج على ارتفاع 1100م وما فوق.

الخميس		الأربعاء		الثلاثاء		درجات الحرارة المتوقعة	
٧/١٣		١١/١٣		١٤/١٨		صور	الساحل
٩/١٣	٧/١٣	١١/١٣	١٠/١٣	١٣/١٨	١٣/١٨	بيروت	
٧/١٢		١٠/١٢		١٣/١٧		طرابلس	
٠/٧		٤/٧		٧/١١		بيصور	الجبال
٢-/٥	٢-/٧	٣/٦	٣/٧	٦/١٠	٦/١١	قرطبا	
٦-/١-		٢-/٠		١/٣		الأرز	
٣/٨		٦/٨		٨/١١		مرجعيون	الداخل
٠/٧	٠/٨	٣/٧	٣/٨	٧/١٠	٧/١١	زحلة	

الرياح السطحية: جنوبية غربية سرعتها (٢٠ و ٥٠ كلم/س)، تشتد لتقارب ١٠٠ كلم/س حتى قبل ظهر الأربعاء.

الانقشاع: متوسط، يسوء أحياناً.

الرطوبة النسبية على الساحل: بين ٦٠ و ٩٠%.

حال البحر: مانج الى هائج.

الضغط الجوي: ١٠٠٤ HPA

ساعة شروق الشمس: ٠٦:٣٤

حرارة سطح الماء: ٢٠°م.

أي ما يعادل: ٧٥٣ ملم زئبق

ساعة غروب الشمس: ١٦:٣٠