

Lebanon Fire Risk Bulletin



CIVIL DEDEFENCE

Refer to cadast condition.

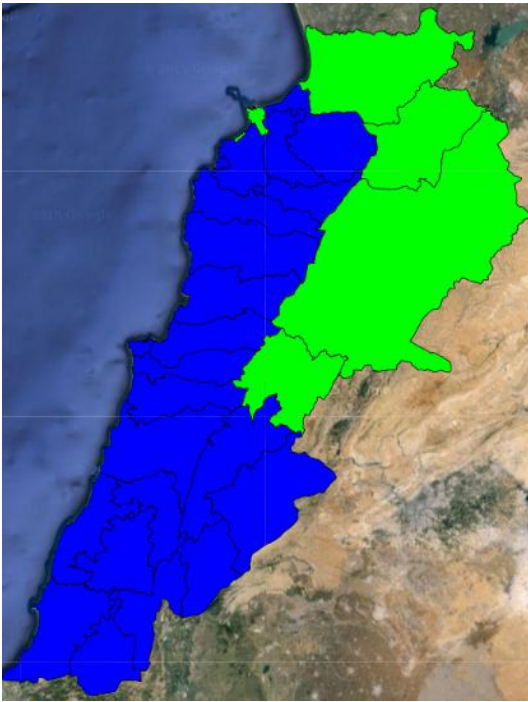
General description of potential fire risk situation

Symbol	Level of risk	Meaning and actions
VL	Very low	Very low fire risk. Controlled burning operations can be hardly executed due to high fuel moisture content. Normally wildfires self-extinguish.
L	Low	Low fire risk. Controlled burning operations can be executed with a reasonable degree of safety.
ML	Medium low	Medium-low fire risk. Controlled burning operations can be executed in safety conditions. All the fires need to be extinguished.
M	Medium	Medium fire risk. Controlled burning operations would be avoided. All the fires need to be very well extinguished.
M	Medium high	Controlled burning is not recommended. Open flame will start fires. Cured grasslands and forest litter will burn readily. Spread is moderate in forests and fast in exposed areas. Patrolling and monitoring is suggested. Fight fires with direct attack and all available resources.
H	High	Ignition can occur easily with fast spread in grass, shrubs and forests. Fires will be very hot with crowning and short to medium spotting. Direct attack on the head may not be possible requiring indirect methods on flanks. Patrolling and monitoring the territory is highly suggested.
E	Extreme	Ignition can occur also from sparks. Fires will be extremely hot with fast rate of spread. Control may not be possible during day due to long range spotting and crowning. Suppression forces should limit efforts to limiting lateral spread. Damage potential total. Patrolling and monitoring the territory is highly suggested.

Beirut, 23 February 2016

FIRE RISK INDEX

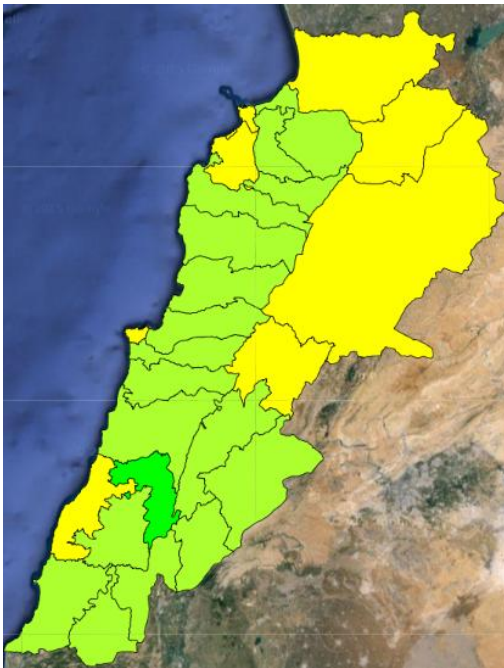
22 February



23 February



24 February



25 February

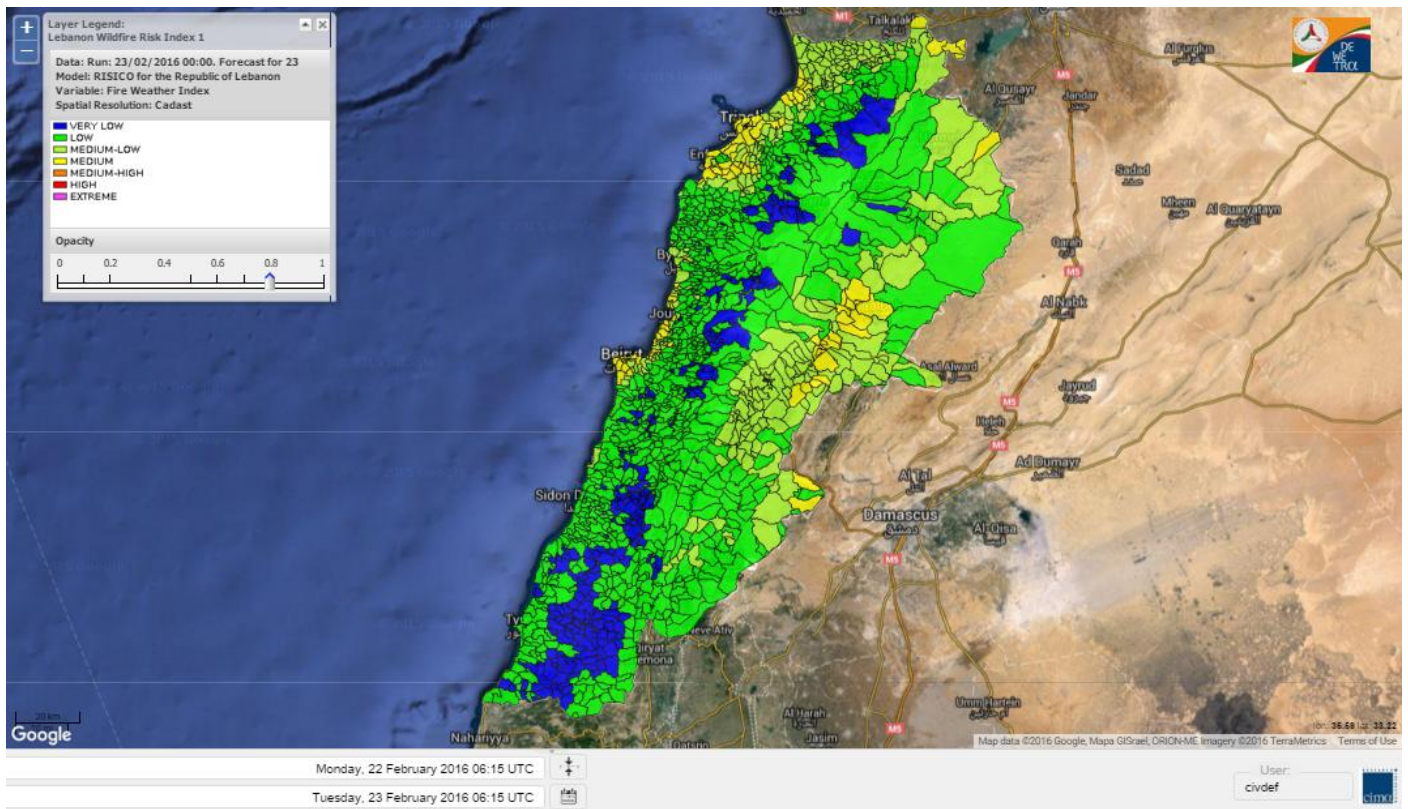


Layer Legend:
Lebanon Wildfire Risk Index 1

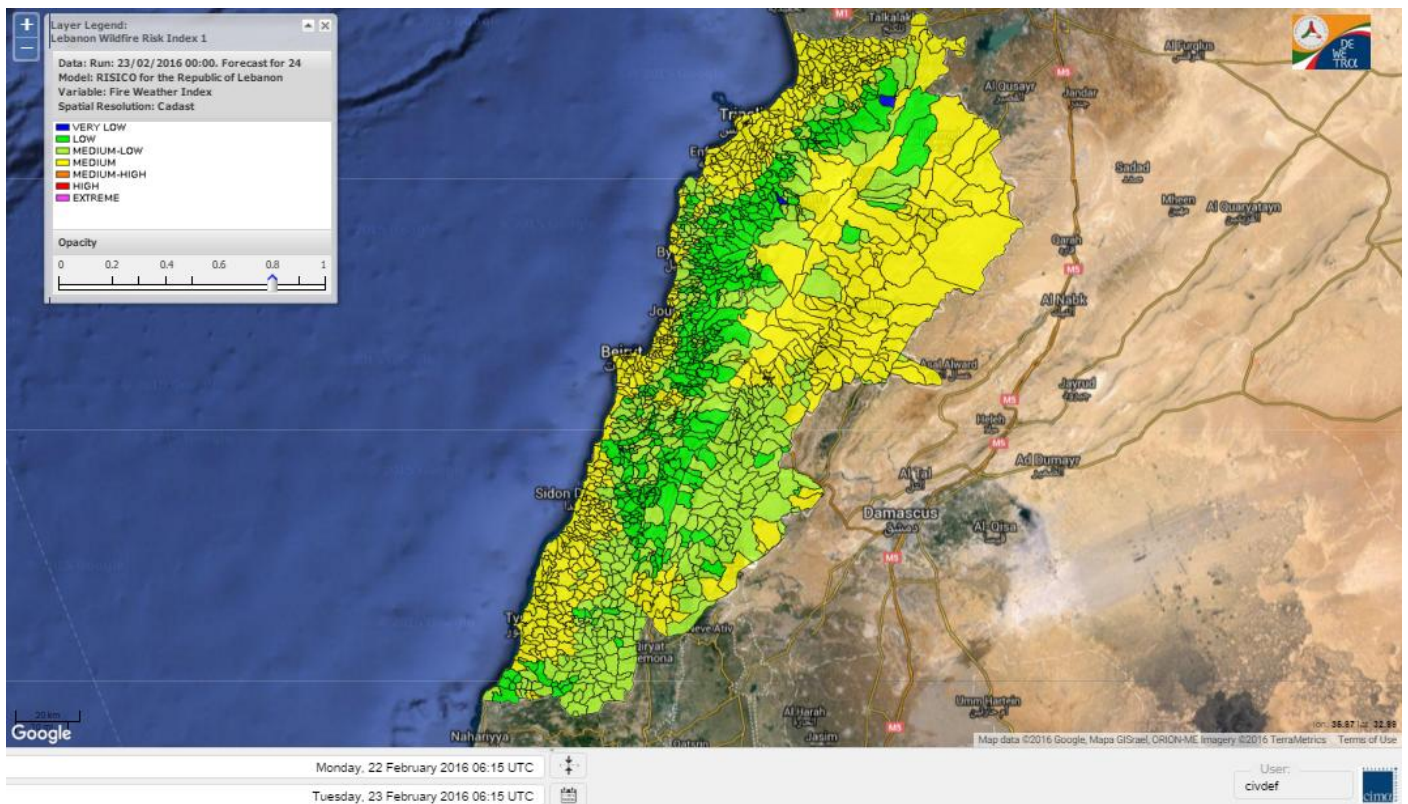
Data: Run: 23/02/2016 00:00. Forecast for 23
Model: RISICO for the Republic of Lebanon
Variable: Fire Weather Index
Spatial Resolution: Caza

- VERY LOW
- LOW
- MEDIUM-LOW
- MEDIUM
- MEDIUM-HIGH
- HIGH
- EXTREME

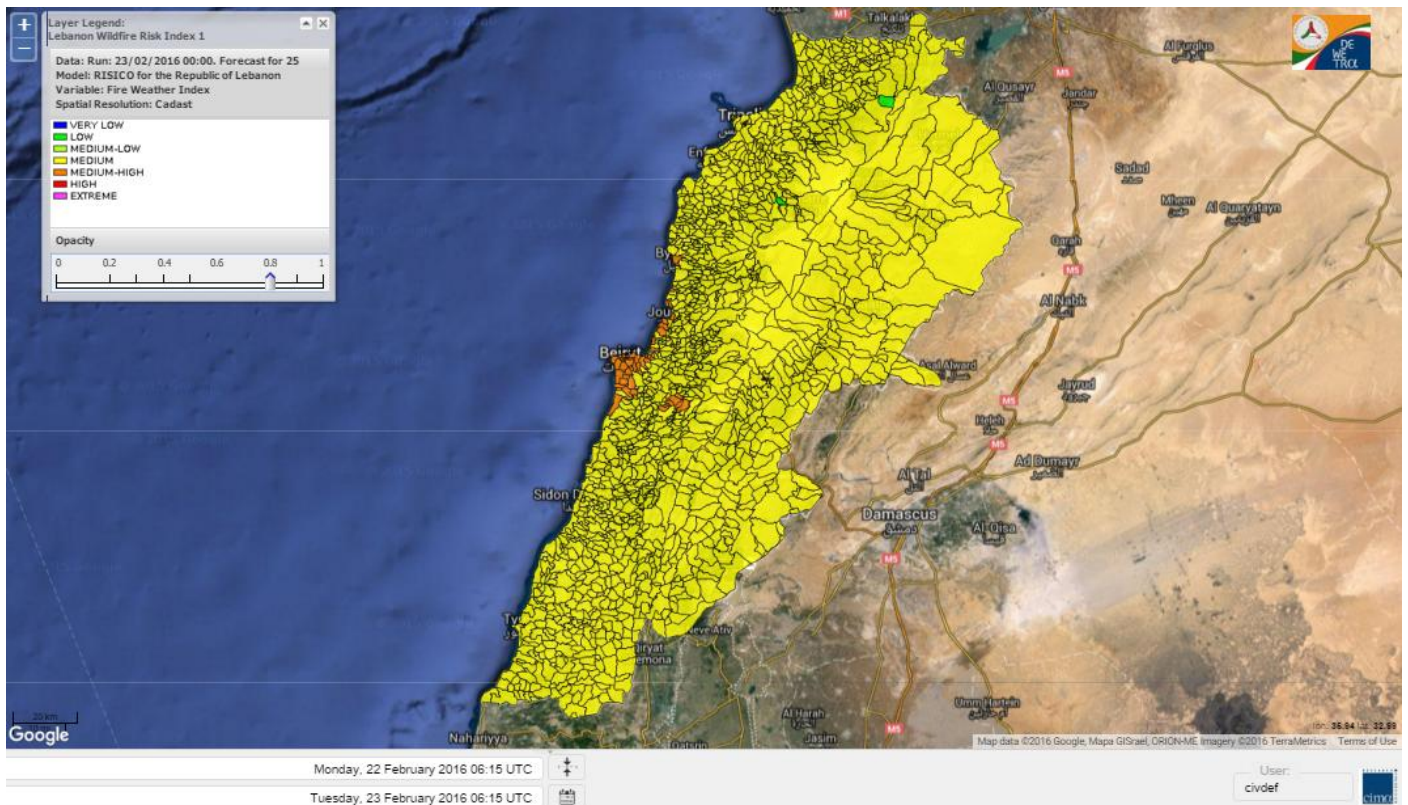
Lebanon for 23 February 2016



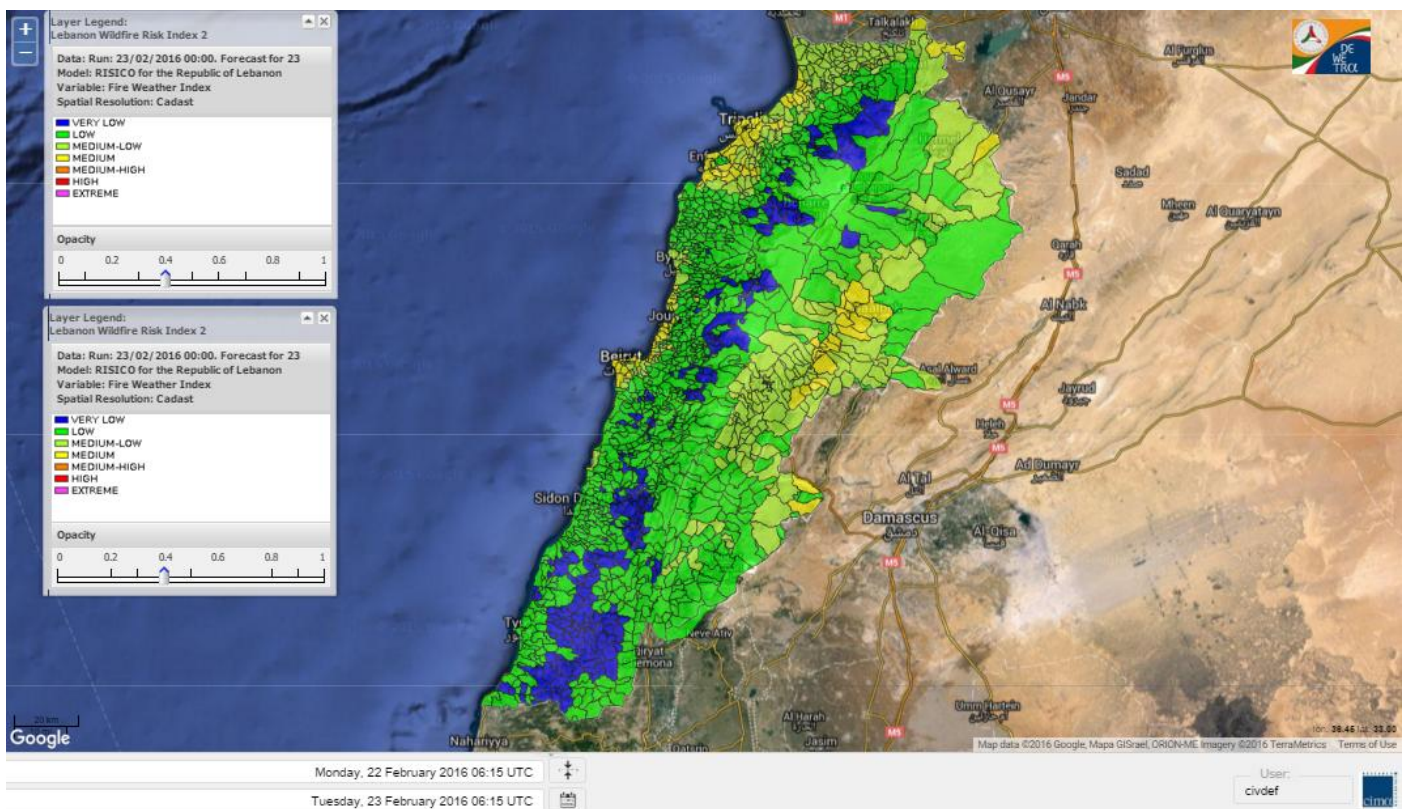
Lebanon for 24 February 2016



Lebanon for 25 February 2016



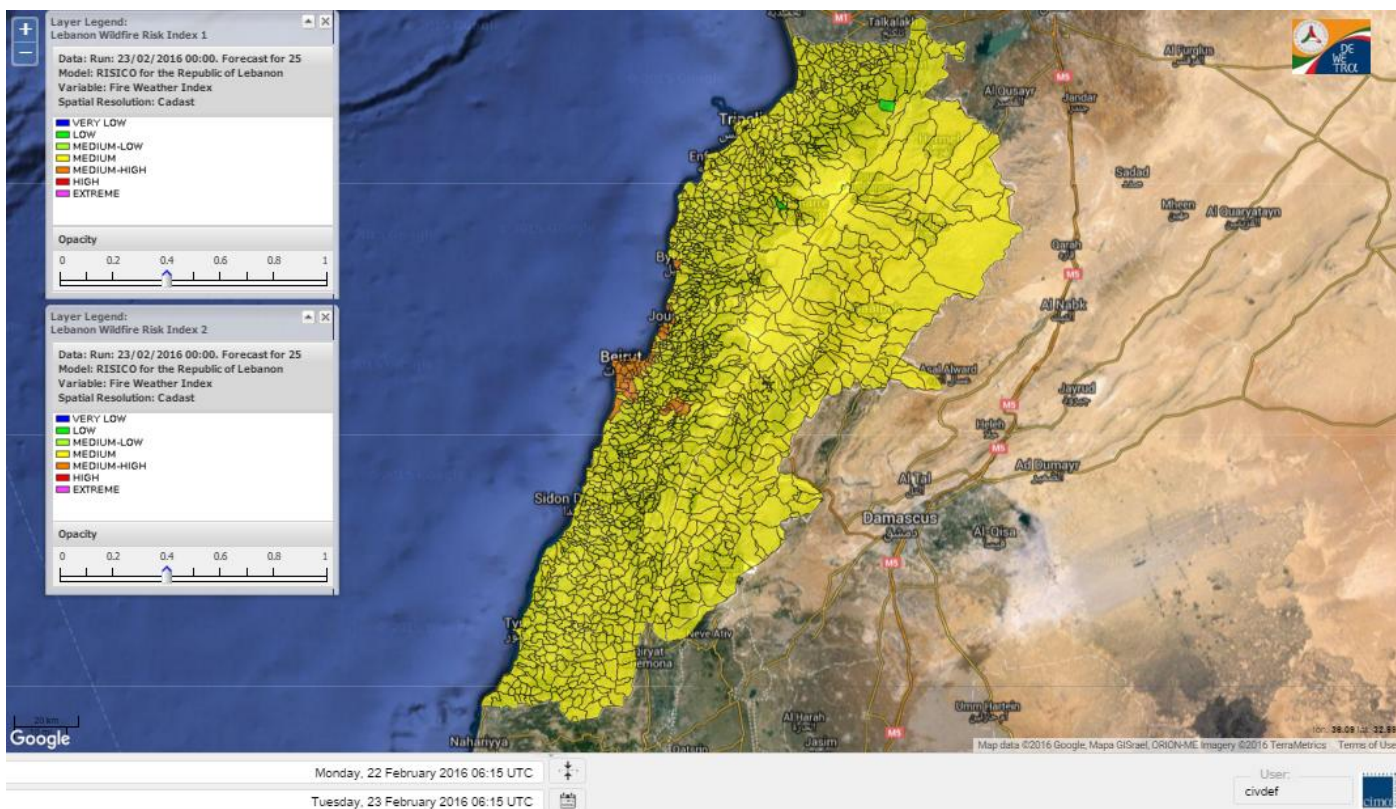
Shouf Biosphere Reserve Forecast for 23 February 2016



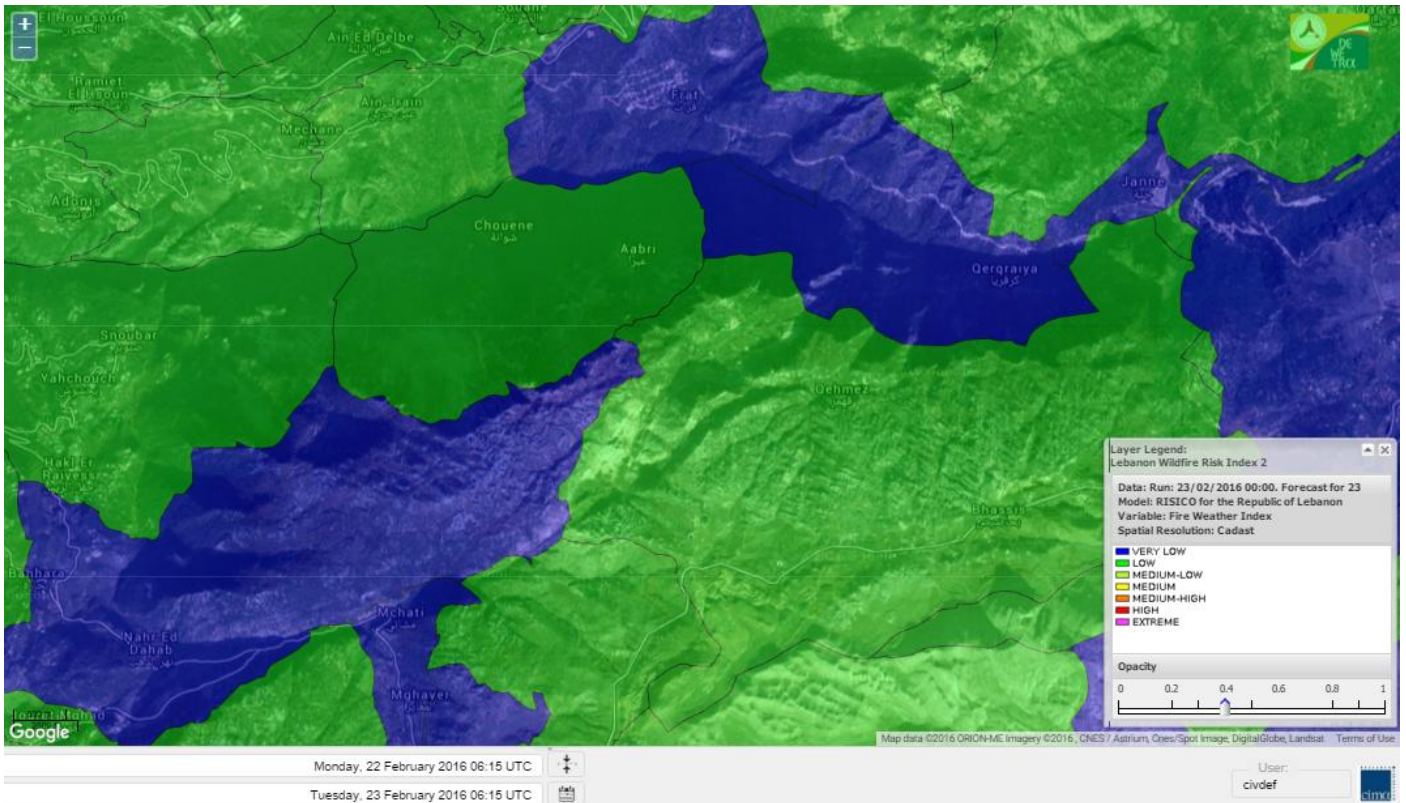
Shouf Biosphere Reserve Forecast for 24 February 2016



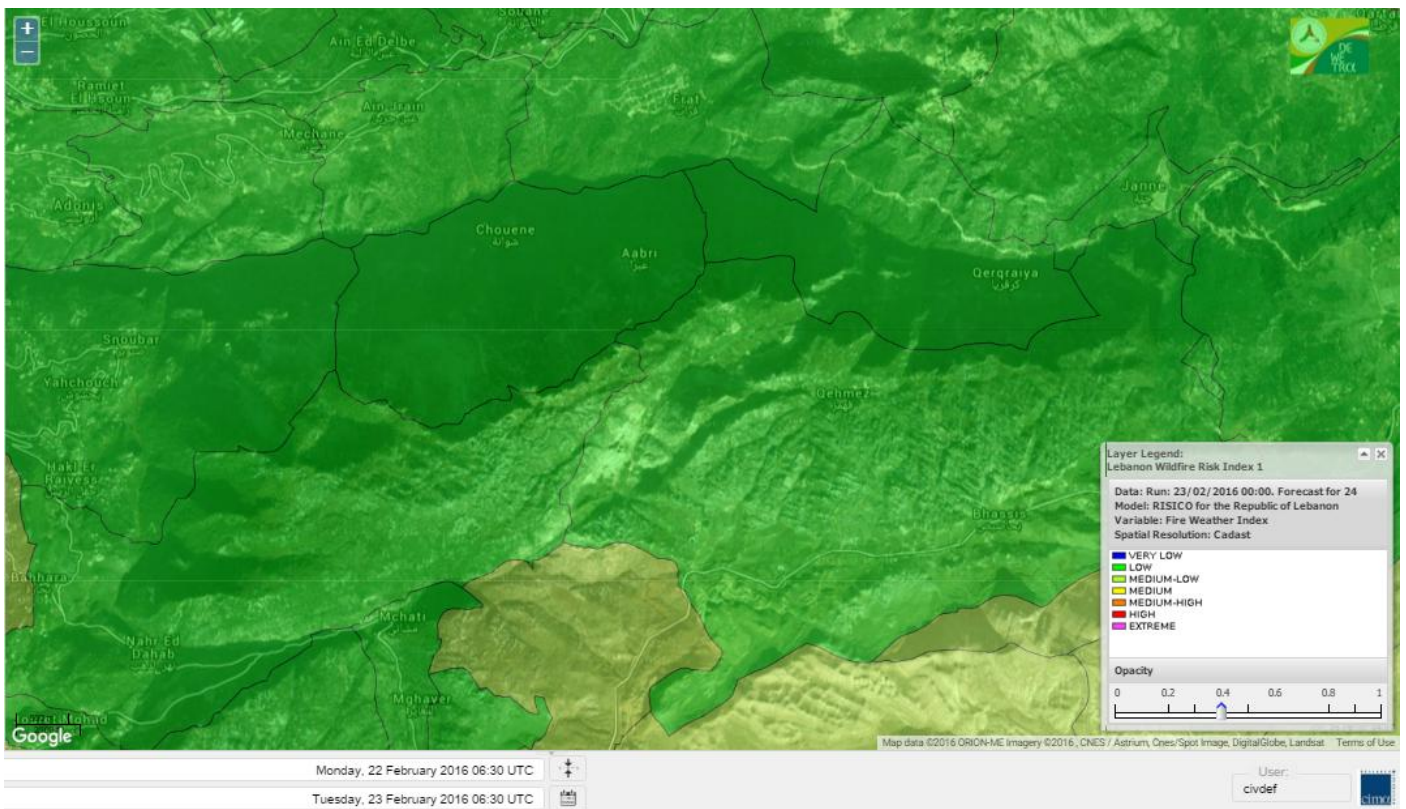
Shouf Biosphere Reserve Forecast for 25 February 2016



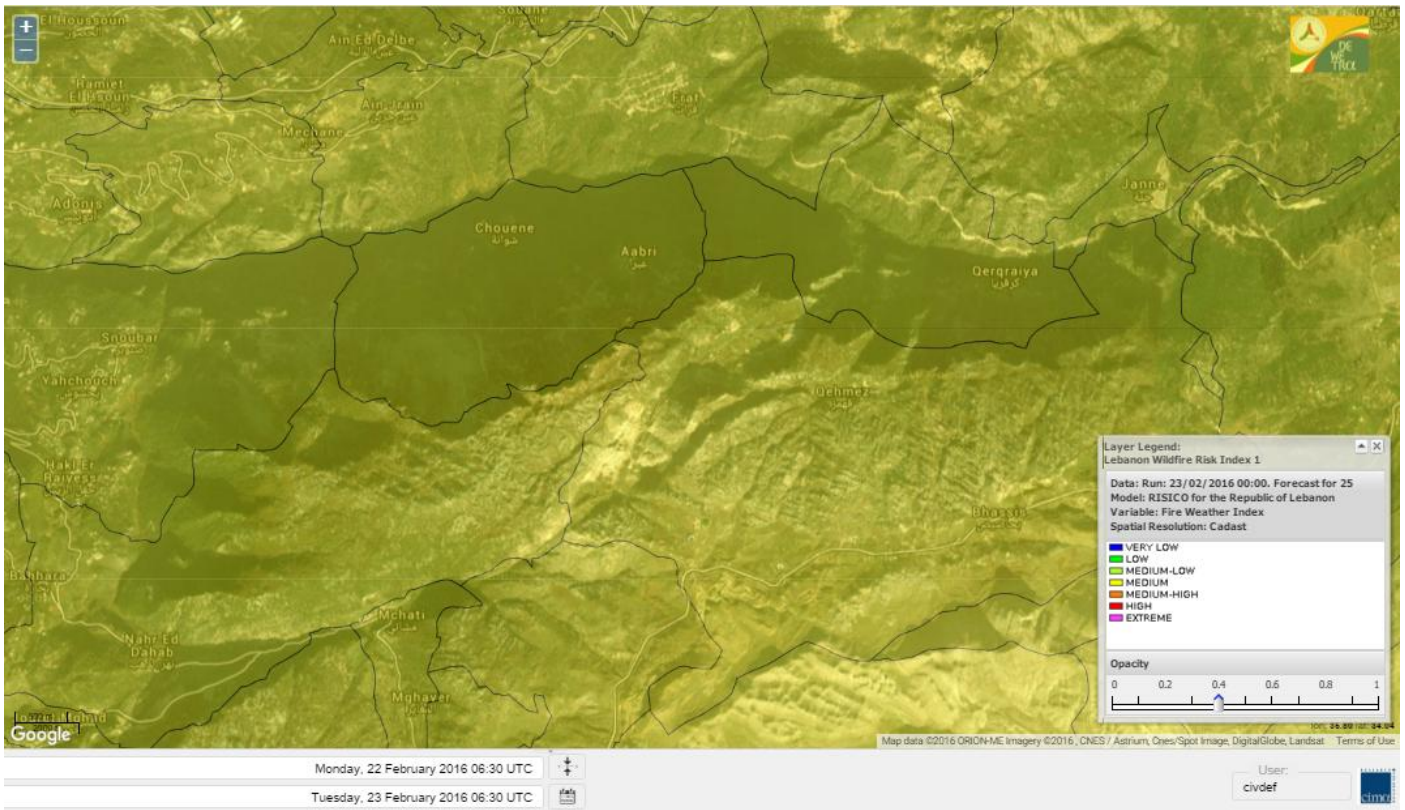
Jabal Moussa Reserve Forecast for 23 February 2016



Jabal Moussa Reserve Forecast for 24 February 2016



Jabal Moussa Reserve Forecast for 25 February 2016



Nord

Koura

Municipality	23-Feb	24-Feb	25-Feb	Municipality	23-Feb	24-Feb	25-Feb	Municipality	23-Feb	24-Feb	25-Feb
Aaba	M	M	M	Afsaddiq	M	M	M	Ain Ekrine	ML	M	M
Amioun	ML	M	M	Anfeh	M	M	M	Badbhoun	M	M	M
Barghoun	M	M	M	Barsa	ML	M	M	Batroumine	M	M	M
Bdebba	M	M	M	Bechmizine	M	M	M	Bednayel El-Koura	L	ML	M
Bhabbouch El-Koura	ML	M	M	Bkeftine	ML	M	M	Bnehran	L	ML	M
Bqaiia El-Koura	ML	M	M	Bsarma	M	M	M	Btaaboura	L	M	M
Bterram	M	M	M	Btouratij	M	M	M	Bziza	L	M	M
Dar Beehtar	L	M	M	Dar Chmezzine	L	M	M	Deddeh	M	M	M
Deir El-Balamand	L	M	M	Fih	M	M	M	Hraiche	M	M	M
Ijdaabrine	L	ML	M	Kaftoun	L	M	M	Kefraya El-Koura	ML	M	M
Kfarakka	ML	M	M	Kfarhata	L	ML	M	Kfarhazir	ML	M	M
Kfarkahel	ML	M	M	Kfarsaroun	ML	M	M	Kosba	ML	M	M
Mejdel el-Koura	L	ML	M	Nakhle	ML	M	M	Qalhat	L	M	M
Ras Masqa	M	M	M	Rechdibbine	ML	M	M	Zakroun	ML	M	M
Zgharta El-Mtaouile	L	L	M								

Bcharre

Municipality	23-Feb	24-Feb	25-Feb	Municipality	23-Feb	24-Feb	25-Feb	Municipality	23-Feb	24-Feb	25-Feb
Aabdine	L	L	M	Bane	L	ML	M	Barhelioun	L	L	M
Bazouone	VL	ML	M	Becharre	L	M	M	Beit Menzer	VL	L	M
Billa	L	L	M	Blaouza	VL	ML	M	Bqaa Kafra	VL	ML	M
Bqerqacha	VL	ML	M	Breissat	VL	ML	M	Dimane	VL	ML	M
Hadath El Jobbeh	VL	L	M	Hadchit	VL	L	M	Hasroun	VL	ML	M
Mazraat Aassaf	VL	L	M	Mazraat Bani Saab	L	L	M	Mchaa El-Jobbeh	L	M	M
Metrit	L	L	M	Moghr El-Ahoual	L	ML	M	Ouadi Qannoubine	VL	VL	L
Qanat	VL	L	M	Qnayouer	VL	L	M	Tourza	L	L	M

Batroun

Municipality	23-Feb	24-Feb	25-Feb	Municipality	23-Feb	24-Feb	25-Feb	Municipality	23-Feb	24-Feb	25-Feb
Aabrine	L	L	M	Aalali	L	L	M	Aartiz	L	L	M
Abdelli	L	L	M	Ajdabra	L	L	M	Assia	L	L	M
Basbina	L	M	M	Batroun	L	M	M	Bcheleh	L	L	M
Bechtoudar	L	L	M	Beit Chlala	L	L	M	Beit Kassab	VL	L	M
Bijdarfil	L	M	M	Bqesmaya	L	ML	M	Chatine	L	L	M
Chebte	L	L	M	Chekka	M	M	M	Daael	L	L	M
Dahr Abi Yaghi	L	L	M	Daraya El-Batroun	L	M	M	Deir Billa	L	L	M
Deir Kfifane	L	ML	M	Deir Mar Youhanna EL	L	L	M	Deir Mar Youssef Jra	L	L	M
Douma	L	L	M	Douq	L	L	M	Eddeh El-Batroun	L	ML	M
Ftatah El-Batroun	L	L	M	Ghouma	L	ML	M	Hadtoun	L	L	M
Hamat	L	ML	M	Harbouna	L	L	M	Hardine	VL	L	M
Helta	L	L	M	Hery	M	M	M	Jebba	L	L	M
Jrabta El-Batroun	L	ML	M	Jrane El-Batroun	L	M	M	Kfar Aabida	L	ML	M
Kfar Halda	L	L	M	Kfarb Shlaimane	L	L	M	Kfarhatna	L	L	M
Kfarhay	L	M	M	Kfarhelos	L	L	M	Kfifane	L	M	M

Kfour El Arabi	L	L	M	Koubba	L	M	M	Kour	L	ML	M
Mar Mama	L	L	M	Masrah	L	L	M	Mehmarch	L	ML	M
Mrah Chdid	L	L	M	Mrah El Ziyat	L	ML	M	Mrah El-Hajj	VL	L	M
Nahle El-Batroun	L	ML	M	Niha El-Batroun	L	L	M	Oujah El-Hajjar	L	ML	M
Ouata Houb	VL	L	M	Qatnaaoun	L	ML	M	Racha	L	ML	M
Rachana	L	L	M	Rachkida	L	ML	M	Ram El-Batroun	L	L	M
Ras Nahnach	L	ML	M	Selaata	ML	M	M	Sghar	L	ML	M
Smar Jbayl	L	ML	M	Sourat El-Batroun	L	L	M	Tannourine El-Faouqa	L	ML	M
Tannourine Et-Tahta	VL	L	M	Thoum	L	ML	M	Toula El-Batroun	L	L	M
Zan	L	ML	M								

Zgharta

Municipality	23-Feb	24-Feb	25-Feb	Municipality	23-Feb	24-Feb	25-Feb	Municipality	23-Feb	24-Feb	25-Feb
Aachach	ML	M	M	Aalma	ML	M	M	Aarde	ML	M	M
Aintourine	L	ML	M	Arabet Qozhaya	L	L	M	Arde	ML	M	M
Arjis	ML	M	M	Asnoun	L	M	M	Ayto	L	L	M
Basloukit	VL	ML	M	Bchannine	M	M	M	Besebeel	ML	M	M
Bhairret Toula	VL	L	M	Bnachee	L	ML	M	Boussit	M	M	M
Danha	L	M	M	Daraiya Zgharta	M	M	M	Deir Jdeide	L	M	M
Ehden	L	ML	M	Halan	ML	M	M	Hariq Zgharta	L	M	M
Houakir	L	ML	M	Hraiqis	ML	M	M	laal	L	M	M
Ijbaa	L	L	M	Karm Saddeh	L	L	M	Kfarchakhna	ML	M	M
Kfardlaqous	L	M	M	Kfarfou	ML	M	M	Kfarhata Zgharta	L	M	M
Kfarhoura	ML	M	M	Kfarsghab	VL	L	M	Kfaryachit	L	M	M
Kfarzaina	ML	M	M	Khaldiye	L	M	M	Mazraat Ajbeaa	ML	M	M
Mazraat Et-Teffah	VL	L	M	Mazraat Jneid	L	M	M	Mejdlaiya Zgharta	M	M	M
Merh Kfarsghab	L	M	M	Miryata	ML	M	M	Miziara	L	L	M
Mzraat Kefraya	ML	M	M	Qorah Bach	L	M	M	Rachiine	ML	M	M
Ras Kifa	ML	M	M	Sakhra	L	M	M	Sebhel Zgharta	L	L	M
Serhel	VL	L	M	Tallet Zgharta	ML	M	M	Toula Zgharta	VL	L	M
Zgharta	ML	M	M								

Minieh-Denniye

Municipality	23-Feb	24-Feb	25-Feb	Municipality	23-Feb	24-Feb	25-Feb	Municipality	23-Feb	24-Feb	25-Feb
Aasaymout	VL	L	M	Aaymar	L	L	M	Aazki	L	M	M
Ain El-Tineh-Miniyeh	VL	L	M	Assoun	L	L	M	Bakhaaoun	L	ML	M
Bchennata	L	ML	M	Bechehhara	L	L	M	Beddawi	M	M	M
Behouaita	VL	L	M	Beit El Foqss	L	L	M	Beit Haouik	L	ML	M
Beit Zoud	L	L	M	Bekaasafrine	L	M	M	Borj El Yahoudiyeh	ML	M	M
Bqarsouna	VL	L	M	Btermaz	VL	L	M	Debaael	L	L	M
Deir Ammar	ML	M	M	Deir Nbouh	L	ML	M	Haouaret-Miniyeh	L	L	M
Haql el Azimeh	L	L	M	Harf El Siyad	L	L	M	Hazmiye-Miniyeh	VL	L	M
Izal	L	ML	M	Jarjour	VL	L	M	Jayroun	VL	L	M
Kahf El-Malloul	L	L	M	Karm El-Moher	L	ML	M	Kfar Binine	L	L	M
Kfarchalane	L	ML	M	Kfarhabou	L	M	M	Kharroub-Miniyeh	L	M	M
Mazraat El-Kreme	VL	L	M	Mazraat Ketrane	L	L	M	Merkebta	ML	M	M
Minyeh	ML	M	M	Mrah El Sfirat	VL	L	M	Mrah Sraj	L	L	M
Mrebbine	VL	ML	M	Nabi Youcheaa	ML	M	M	Nemrine	VL	ML	M

Qarhaiya	L	ML	M	Qarne	VL	L	M	Qarsita	VL	L	M
Qattineh-Miniyeh	VL	L	M	Qemmamine	VL	L	M	Qraine	VL	L	M
Raouda-Aadoua	L	M	M	Rihaniyet-Miniyeh	M	M	M	Sfireh	L	L	M
Sir Ed-Danniyeh	L	L	M	Tarane	VL	L	M	Terbol-Miniyeh	M	M	M
Zaghartaghriine	L	ML	M	Zouq Bhannine	M	M	M				

Nabatiye

Nabatiye

Municipality	23-Feb	24-Feb	25-Feb	Municipality	23-Feb	24-Feb	25-Feb	Municipality	23-Feb	24-Feb	25-Feb
Aabba	VL	M	M	Aazzi	VL	ML	M	Adchit El-Chqif	VL	M	M
Ain Bou Swar	VL	ML	M	Ain Kana	L	ML	M	Ali El-TaHER	L	ML	M
Ansar	L	M	M	Arab Salim	VL	ML	M	Arnoun	L	M	M
Bfaroue	VL	ML	M	Breyqaah	VL	M	M	Charqiyeh	VL	M	M
Choukine	L	ML	M	Deir El Zahrani	VL	ML	M	Doueur El-Nabatiyeh	VL	M	M
Habbouch El-Nabatiye	L	ML	M	Hamra El-Nabatiyeh	L	ML	M	Harouf El-Nabatiyeh	L	M	M
Hmaile	VL	ML	M	Houmin El Faouqa	VL	ML	M	Houmin El Tahta	L	M	M
Jarjough	L	ML	M	Jbaah El-Nabatiyeh	VL	L	M	Jebchit	L	M	M
Kfar Djal El-Nabatiy	L	M	M	Kfar Remmane	L	ML	M	Kfar Sir	VL	ML	M
Kfar Tebnit	L	M	M	Kfarfila	L	ML	M	Kfour El-Nabatieh	L	ML	M
Mayfadoun	L	ML	M	Mazraat Bsaffour	VL	ML	M	Mazraat Chalbaal	VL	ML	M
Mazraat Dmoul	VL	M	M	Mazraat El Khreibeh	L	M	M	Mazraat El-Bayad El-	VL	ML	M
Mazraat Kfarjaouz	L	ML	M	Mazraat Qalaat Meiss	L	ML	M	Nabatiyeh El-Fawka	L	ML	M
Nabatiyeh Et-Tahta	L	ML	M	Namiriyeh	VL	M	M	Qaaqaaiyet El Jisr	L	ML	M
Qossaibeh El-Nabatiy	VL	M	M	Roumine	L	ML	M	Sarba El-Nabatieh	L	ML	M
Sir El-Gharbiyeh	VL	M	M	Toul	L	ML	M	Yehmor El-Nabatiyeh	L	ML	M
Zaoutar El Charqiyeh	VL	ML	M	Zaoutar El-Gharbiyeh	L	ML	M	Zebdine El-Nabatiyeh	L	ML	M
Zefta	VL	M	M								

Hasbaiya

Municipality	23-Feb	24-Feb	25-Feb	Municipality	23-Feb	24-Feb	25-Feb	Municipality	23-Feb	24-Feb	25-Feb
Aain Jarfa	L	ML	M	Abou Qamha	L	M	M	Ain Qania	L	ML	M
Bourghos	ML	ML	M	Chebaa	L	M	M	Chouaya Hasbaya	L	ML	M
Dellafeh	ML	ML	M	Fardiss Hasbaiya	L	M	M	Hasbaya	L	ML	M
Hbariyeh	L	ML	M	Kaoukaba Hasbaiya	L	M	M	Kfar Chouba	L	ML	M
Kfar Hamam	L	ML	M	Kfeir El-Zait	L	ML	M	Khalwat Hasbaya	L	L	M
Khreibet Hasbaiya	L	M	M	Majidiyeh Hasbaiya	L	M	M	Marj Ez-Zhour (Haouc	L	L	M
Meri	L	M	M	Mimass	ML	ML	M	Rachaiya El-Fokhar	L	ML	M
Salaiyeb	L	M	M								

Marjayoun

Municipality	23-Feb	24-Feb	25-Feb	Municipality	23-Feb	24-Feb	25-Feb	Municipality	23-Feb	24-Feb	25-Feb
Aalmane Marjaayoun	VL	L	M	Aamra	L	M	M	Adayseh Marjaayoun	L	ML	M
Adchit El-Koussair	VL	ML	M	Ain Aarab Marjaayoun	L	M	M	Bani Haiyann	VL	ML	M
Blatt Marjaayoun	L	M	M	Blida	L	ML	M	Borj El-Moulouk	L	M	M
Boueyda Marjaayoun	L	M	M	Deir Mimass	L	ML	M	Deir Siriane	VL	ML	M
Dibbine	L	M	M	Ebel El Saqi	L	M	M	Houla	L	ML	M
Houra	L	ML	M	Kfar Kila	L	ML	M	Khiam Marjaayoun	L	M	M

Klayaa	L	M	M	Majdel Selem	VL	ML	M	Marjaayoun	L	M	M
Markaba	L	ML	M	Mays El-Jabal	L	ML	M	Mazraat Doumiat	L	M	M
Mazraat Sarada	L	M	M	Mhaibib	L	ML	M	Qabrikha	VL	ML	M
Qantara	VL	ML	M	Rab El-Thalathine	L	ML	M	Saouaneh Marjayoun	VL	ML	M
Talloussa	VL	L	M	Taybeh Matjaayoun	L	ML	M	Touline	VL	ML	M

Bent Jbail

Municipality	23-Feb	24-Feb	25-Feb	Municipality	23-Feb	24-Feb	25-Feb	Municipality	23-Feb	24-Feb	25-Feb
Ain-Ebel	L	ML	M	Aitaroun	L	ML	M	Aynata Bint Jbeil	L	ML	M
Ayta El-Chaeb	VL	ML	M	Ayta El-Jabal	VL	ML	M	Beit Lif	VL	L	M
Beit Yahoun	VL	ML	M	Bint Jbeil	L	ML	M	Borj Qalaway	VL	ML	M
Braachit	VL	ML	M	Chakra	VL	ML	M	Debel	L	ML	M
Deir Antar	VL	ML	M	Froun	VL	ML	M	Ghandouriyeh Bint Jb	VL	ML	M
Hanine	L	ML	M	Hariss	VL	ML	M	Hdatha	L	ML	M
Jmeyjmech	VL	ML	M	Kafra Bint Jbeil	VL	ML	M	Kfar Dounine	VL	ML	M
Khirbet Selm	VL	ML	M	Kounine	L	ML	M	Maroun El Ras	L	ML	M
Qalaway	VL	ML	M	Qaouzah	VL	L	M	Qatmoun	L	ML	M
Ramya Bint Jbeil	VL	L	M	Rchaf	L	L	M	Rmeich	L	ML	M
Safad Al Battikh	VL	ML	M	Salhaneh	VL	L	M	Serbine	VL	ML	M
Sultanieh Bint Jbeil	VL	ML	M	Tibnine	VL	ML	M	Tiri	L	ML	M
Yaroun	L	ML	M	Yater	VL	ML	M				

Mont Liban

Jbail

Municipality	23-Feb	24-Feb	25-Feb	Municipality	23-Feb	24-Feb	25-Feb	Municipality	23-Feb	24-Feb	25-Feb
Aabeydat	L	L	M	Aalita	L	L	M	Aamchit	ML	M	M
Aarab El-Lahib	VL	ML	M	Aarasta	VL	L	M	Adonis Jbeil	L	L	M
Afqa Jbeil	VL	L	M	Ain El Delbeh Jbeil	L	L	M	Ain El-Ghouayba	VL	L	M
Ain Jrain	L	L	M	Ain Kfah	L	ML	M	Almat El Chemaliyat	L	L	M
Almat El-Jenoubiya	L	L	M	Aqoura	L	M	M	Bayzoun	L	L	M
Bchille Jbeil	L	L	M	Bechtlida	L	L	M	Behdaydat	L	ML	M
Beit Habbaq	L	ML	M	Bejjeh	L	ML	M	Bekhaaz	L	ML	M
Berbara Jbeil	L	M	M	Bintael	L	L	M	Birket Hjoula	L	L	M
Blatt Jbeil	L	ML	M	Boulhos	L	L	M	Breyj Jbeil	L	L	M
Chamat	L	M	M	Chikhane	L	M	M	Chmout	L	L	M
Eddeh Jbeil	ML	M	M	Ehmej	L	L	M	Fatre	L	L	M
Ferhet	L	ML	M	Fghal	L	L	M	Frat	VL	L	M
Ghabat	VL	L	M	Ghalboun	L	ML	M	Gharzouz	L	ML	M
Ghofrine	L	ML	M	Habil	VL	L	M	Halate	ML	ML	M
Haqel	L	L	M	Hbaline	L	ML	M	Hboub	ML	ML	M
Hdeine	L	L	M	Hema Er-Rehban	L	ML	M	Hema Mar Maroun Aann	L	ML	M
Hjoula	L	L	M	Hosrayel	L	M	M	Hsarat	L	ML	M
Hsoun	L	L	M	Jaj	L	L	M	Janne	VL	L	M
Jbeil	ML	M	MH	Jeddeyl Jbeil	L	M	M	Jlisse	L	L	M
Jouret El-Qattine	L	L	M	Kfar Baal Annaya	L	L	M	Kfar Kidde	L	ML	M
Kfar Kouas	L	L	M	Kfar Mashoun	ML	M	M	Kfoun	L	L	M

Kharbe Jbeil	L	ML	M	Laqlouq	L	ML	M	Lassa	VL	L	M
Lehfed	L	L	M	Maad	L	ML	M	Mar Sarkis	L	ML	M
Mastita	ML	M	M	Mayfouq	L	L	M	Mazraat El Siyad	L	ML	M
Mazraat El-Maaden	L	L	M	Mechane	L	L	M	Mechmech Jbeil	L	L	M
Mehrin	ML	ML	M	Mejdel El-Akoura	VL	L	M	Mghayreh Jbeil	L	L	M
Mounsef	L	M	M	Nahr Ibrahim	M	M	M	Qahmez	L	L	M
Qartaba	L	L	M	Qartaboun	M	M	MH	Qattara Jbeil	L	L	M
Qorqraya	VL	L	M	Ramout	L	ML	M	Ras Osta	L	L	M
Rihane Jbeil	ML	M	M	Sakiet El-Khayt	L	L	M	Saqi Richmaya	L	L	M
Sebrine	L	L	M	Seraita	VL	L	M	Souane Jbeil	L	L	M
Tadmor	L	L	M	Tartej	L	L	M	Torzaiya	L	L	M
Yanouh Jbeil	L	L	M	Zibidine Jbeil	L	L	M				

El Metn

Municipality	23-Feb	24-Feb	25-Feb	Municipality	23-Feb	24-Feb	25-Feb	Municipality	23-Feb	24-Feb	25-Feb
Aain El-Qabu	VL	L	M	Aain El-Qach	L	L	M	Aain El-Teffaha	L	ML	M
Aain el-Safssaf El-M	L	L	M	Abou Mizane	L	ML	M	Ain Aar	ML	M	M
Ain Alaq	L	ML	M	Ain El-Kharroube	L	ML	M	Ain El-Sendianeh	L	L	M
Ain El-Zeitoune	VL	L	M	Ain Saadeh	L	M	M	Aintoura El-Matn	L	ML	M
Amaret Chalhoub	M	M	MH	Antelias	M	M	MH	Atchaneh	L	ML	M
Ayroun	L	L	M	Baabdat	L	L	M	Baouchariyeh	ML	M	MH
Baskinta	VL	L	M	Beit Chabab	L	L	M	Beit El-Chaar	M	M	M
Beit El-Kekko	M	M	MH	Beit Mery	L	ML	M	Bhersaf	L	L	M
Bikfaya	L	L	M	Biyakout	M	M	MH	Bnabil	L	L	M
Bourj Hammoud	M	M	MH	Bqennaya	ML	M	M	Broummana El-Matn	L	ML	M
Bsalim	L	M	M	Bsifrine	VL	L	M	Bteghrine	VL	L	M
Chaouiye	L	ML	M	Chouaya El-Matn	L	ML	M	Choueir	L	L	M
Chrine	L	L	M	Dahr El Sawan El-Mat	L	L	M	Daychouniyeh	L	M	M
Dbayeh	M	M	MH	Deir Chamra	L	L	M	Deir Mar Abda el Mch	L	M	M
Deir Mar Roukouz	ML	M	M	Deir Tamiche	L	M	M	Dik El-Mehdi	ML	M	M
Dikwaneh	ML	M	MH	Douar El-Matn	L	L	M	Fanar	L	M	M
Fraike	L	L	M	Haret El-Ballaneh	ML	M	M	Hbous	ML	M	M
Himlaya	L	L	M	Jal El Did	M	M	MH	Jdeideh El-Metn	ML	M	MH
Jouar El-Matn	L	L	M	Jouret El-Ballout	L	M	M	Kaaqour	L	L	M
Kfar Aaqab	VL	L	M	Kfertay El-Matn	VL	L	M	Khenchara	L	L	M
Khillat El-Mtain	L	L	M	Konnabat Broummana	L	ML	M	Konnabat Salima	VL	L	M
Machraah El-Matn	VL	L	M	Majdel Tarchich	L	M	M	Majzoub	ML	M	M
Mansouriyeh El-Metn	L	M	M	Mar Boutros Karm Et-	L	L	M	Mar Chaya et Mzekke	L	ML	M
Mar Moussa Ed-Douar	L	L	M	Marjaba	VL	L	M	Masqa	L	ML	M
Mayasse	L	L	M	Mazraat Deir Aoukar	ML	M	M	Mazraat El-Hadirat	ML	M	M
Mazraat Yachouh	M	M	M	Mchikha	L	L	M	Menqlet Mezher	ML	M	M
Mhaydseh Matn	L	L	M	Mkalles	ML	M	MH	Mrouj	L	L	M
Mtain	L	ML	M	Mtayleb	ML	M	M	Nabay	L	M	M
Naccache	ML	M	M	Ouadi Chahine	L	L	M	Ouadi El-Karm El-Mat	VL	L	M
Ouata El-Mrouj	VL	L	M	Ouyoun El-Matn	L	L	M	Qornet Chehwan	L	M	M
Qornet El-Hamra	L	M	M	Roumieh	L	M	M	Sfeilet Bikfaya	L	L	M
Sinn El-Fil	ML	M	MH	Zabbougha	VL	L	M	Zalqa	M	M	MH

Zarououn	L	L	M	Zekrite	L	M	M	Zighrine El-Matn	L	ML	M
Zouk El-Khrab	M	M	M								

Chouf

Municipality	23-Feb	24-Feb	25-Feb	Municipality	23-Feb	24-Feb	25-Feb	Municipality	23-Feb	24-Feb	25-Feb
Aalmane El-Chouf	L	M	M	Aammiq El-Chouf	L	L	M	Ain Ouzein	L	L	M
Ain Qani	L	L	M	Ain Zhalta	L	L	M	Ainbal	L	L	M
Amatour	L	L	M	Anout	L	L	M	Atrine	L	ML	M
Baadarane	L	L	M	Baaqline	L	ML	M	Baasir	L	M	M
Barja	L	M	M	Barouk	L	L	M	Bater	L	L	M
Batloun	L	ML	M	Bayqoun	L	ML	M	Bchetfine	L	L	M
Beiteddine	L	L	M	Benouati Ech-Chouf	L	L	M	Berjein	L	L	M
Bireh et Mtalleh	L	L	M	Biret El-Chouf	L	ML	M	Bkechtine Ouel Mchei	VL	L	M
Bkifa El-Chouf	L	ML	M	Botme	L	L	M	Bqaiaa Ech-Chouf	L	L	M
Bsaba El-Chouf	VL	ML	M	Chammis El-Chouf	L	M	M	Chehim	L	ML	M
Chemaarine	VL	L	M	Chourit	VL	L	M	Daher El-Chouf	L	L	M
Dalhoun	L	ML	M	Damour	L	M	M	Daraya El-Chouf	VL	L	M
Deir El-Moukhalles	VL	L	M	Deir Baba	L	L	M	Deir Dourit	L	ML	M
Deir El-Qamar	L	ML	M	Deir Kouche	L	L	M	Dibbieh	L	L	M
Dmit	L	L	M	Fouara Jaafar	L	L	M	Fraidis El-Chouf	L	L	M
Ghabet Jaafar	VL	ML	M	Gharife	VL	L	M	Haret Jandal	L	L	M
Hasrout	L	ML	M	Jadra	L	M	M	Jahlieh	L	L	M
Jbeih El-Chouf	L	L	M	Jdeidet El-Chouf	L	L	M	Jiyeh	ML	M	M
Jleilyeh	L	ML	M	Jmailiyeh	L	M	M	Joun	L	ML	M
Kahlounie El-Chouf	L	ML	M	Ketermaya	L	M	M	Kfar Faqoud	L	L	M
Kfar Hamal	L	M	M	Kfar Him	L	ML	M	Kfar Katra	L	L	M
Kfar Niss	L	ML	M	Kfar hay	L	ML	M	Kfarnabrakh	L	ML	M
Khirbet Bisri	VL	L	M	Knayse El-Chouf	VL	L	M	Maaniyeh	L	M	M
Maasser Beiteddine	L	L	M	Maasser El-Chouf	L	L	M	Majdalouna	VL	ML	M
Majdel El-Meouch	L	ML	M	Mazboud	L	ML	M	Mazmoura	L	L	M
Mazraat El Chouf	L	ML	M	Mazraat El Daher	VL	L	M	Mazraat El-Douair	L	L	M
Mechref	L	ML	M	Mghairie	L	M	M	Mghayrie El-Chouf	L	L	M
Moukhtara	L	L	M	Mrusti	L	L	M	Mtolle	L	ML	M
Naameh	L	M	M	Niha El-Chouf	L	L	M	Ouadi Abou Yousef	VL	VL	M
Ouadi Ed-Deir	L	M	M	Ouadi El-Sit	L	ML	M	Ouadi bnehlay	VL	L	M
Qraibeh	L	L	M	Qreiaa	VL	L	M	Rmayle El-Chouf	L	M	M
Semqaniyeh	L	ML	M	Sibline	L	M	M	Sirjbeil	L	ML	M
Warhanieh	L	L	M	Werdaniyeh	L	M	M	Zaarourieh	L	L	M

Baabda

Municipality	23-Feb	24-Feb	25-Feb	Municipality	23-Feb	24-Feb	25-Feb	Municipality	23-Feb	24-Feb	25-Feb
Abadiyeh	L	ML	M	Ain Mouaffaq	L	ML	M	Araiya	L	ML	M
Arbaniyeh	VL	L	M	Arsoun	L	L	M	Baabda	L	M	M
Baalchmey	L	M	M	Bmaryam	VL	L	M	Bourj El-Brajneh	ML	M	MH
Boutchay	L	ML	M	Bsaba Baabda	L	ML	M	Btekhney	L	L	M
Btibyat	L	L	M	Bzbeddine	VL	L	M	Chbeniyeh	VL	L	M
Chiyah	M	M	MH	Chmeisset Baabda	VL	L	M	Chouit	L	L	M
Deir El-harf	L	L	M	Deir Khouna	L	L	M	Dlaybeh	VL	L	M

Falougha	L	ML	M	Furn El-Chebbak	ML	M	MH	Hadath Beyrouth	L	M	MH
Halaliyeh Baabda	L	L	M	Hammana	L	ML	M	Haret El Sett	VL	L	M
Haret Hamze	L	L	M	Haret Hreik	ML	M	MH	Hasbaiya El-Metn	VL	L	M
Jouar El-Hoz	VL	L	M	Jouret Arsoun	L	L	M	Kfar Chima	L	M	MH
Kfar Selouane	L	L	M	Khalouat Baabda	L	L	M	Kneisset Baabda	VL	L	M
Laylakeh	L	M	MH	Louayzeh Baabda	L	M	M	Merdache	L	ML	M
Mzairaa Baabda	L	L	M	Ouadi Chahrour El Ol	L	ML	M	Ouadi Chahrour El So	L	L	M
Qalaa Baabda	VL	L	M	Qhraybe Baabda	VL	L	M	Qobbayaa	VL	L	M
Qornayel	VL	L	M	Qortada	L	L	M	Qrayeh Baabda	VL	L	M
Qsaibeh Baabda	L	ML	M	Qtale Baabda	VL	L	M	Ras El Metn	L	L	M
Ras El-Haref	L	L	M	Rouayset El-Ballout	L	L	M	Salima Baabda	L	L	M
Tahouitat El Ghadir	L	M	MH	Tarchich	L	ML	M	Zandouqa	VL	L	M

Aley

Municipality	23-Feb	24-Feb	25-Feb	Municipality	23-Feb	24-Feb	25-Feb	Municipality	23-Feb	24-Feb	25-Feb
Abey	L	ML	M	Aghmid	L	L	M	Ain Dara	L	ML	M
Ain Drafil	VL	L	M	Ain El Halazoun	L	ML	M	Ain El-Rmmaneh	VL	L	M
Ain Jedideh	L	M	M	Ain Ksour	VL	ML	M	Ain Onoub	L	ML	M
Ain Traz	L	L	M	Ainab	VL	L	M	Aley	L	M	M
Aramoun	L	ML	M	Aytat	L	ML	M	Azouniyeh	L	ML	M
Baawerta	L	ML	M	Badghan Oua Wadi Bad	L	ML	M	Bassatine	L	ML	M
Bayssour	L	ML	M	Bchamoun	L	ML	M	Bdadoun	VL	L	M
Behouara	L	ML	M	Bennay	L	ML	M	Bhamdoun El-Dayaa	L	M	MH
Bhamdoun El-Mhatta	L	M	MH	Bkhechtey	L	M	M	Bleibel	VL	L	M
Bmakine	L	M	M	Bmehray	L	L	M	Bouzrid	VL	L	M
Bserrine	L	ML	M	Bsous	VL	L	M	Btalloun	L	M	MH
Btater	L	ML	M	Chanay	L	M	MH	Charoun	L	ML	M
Chartoun	VL	L	M	Chemlane	L	ML	M	Choueifat El-Aamrous	L	M	MH
Choueifat El-Oumara	L	M	M	Choueifat El-Quoubbe	L	M	MH	Dakkoun	L	ML	M
Deir Qoubel	L	L	M	Dfoun	L	M	M	Douair El Remmaneh	VL	L	M
Ghaboun	L	ML	M	Habramoun	VL	L	M	Homs Oua Hama	L	ML	M
Houmal	L	ML	M	Jisr El Qadi	L	ML	M	Kehaleh	L	L	M
Keyfoun	L	M	M	Kfar Aamey	L	ML	M	Kommatyeh	L	ML	M
Maasrati	L	ML	M	Majdel Baana	L	ML	MH	Mansourieh et Ain El	L	M	MH
Mazraat El-Nahr	L	L	M	Mchakhte	L	L	M	Mecherfeh	L	L	M
Mejdlaya	VL	ML	M	Mrayjat	L	L	M	Ramliyah	L	L	M
Rechmaya	L	ML	M	Rejmeh	L	ML	M	Remhala	L	ML	M
Rouaysset El Neemane	L	ML	M	Saoufar	L	ML	M	Selfaya	VL	L	M
Sirhmoul	VL	ML	M	Souq El Ghareb	L	ML	M	Taazanieh	L	M	MH

Kesrouane

Municipality	23-Feb	24-Feb	25-Feb	Municipality	23-Feb	24-Feb	25-Feb	Municipality	23-Feb	24-Feb	25-Feb
Achkout	L	L	M	Adma Oua Dafneh	ML	M	M	Ain Ed-Delbe Kesroua	VL	L	M
Ain El-Rihane	L	ML	M	Aintoura Kesrouane	ML	M	M	Ajaltoun	L	L	M
Akaybeh Kesrouane	M	M	MH	Aramoun Kesrouane	L	ML	M	Azra ouel Ozor	L	ML	M
Ballouneh	L	L	M	Batha	VL	L	M	Bekaatat Achkout	L	L	M
Bekaatat Kanaan	L	L	M	Bizhel	L	ML	M	Bouar	ML	M	M
Bqaatouta	L	L	M	Bqaq Ed-Dine	ML	M	M	Bzommar	L	ML	M

Chahtoul	L	ML	M	Chnaniir	L	ML	M	Chouan	L	L	M
Daraya Kesrouane	L	L	M	Darououn	L	ML	M	Deir Baqlouch	L	L	M
Dlebta	L	L	M	Eghbeh	VL	L	M	Faraya	L	ML	M
Fatka	L	ML	M	Feytroun	L	L	M	Ghazir	L	ML	M
Ghbaleh Kesrouane	L	ML	M	Ghedrass	L	L	M	Ghosta	L	L	M
Ghynéh	ML	ML	M	Harharaya w Kattine	L	ML	M	Harissa Kesrouane	L	M	M
Hayata	L	L	M	Hosein	L	L	M	Hrajel	L	ML	M
Jdeideh Ghazir	L	ML	M	Jeita	L	ML	M	Jounieh Ghadir	ML	M	M
Jounieh Haret Sakhr	M	M	MH	Jounieh Salel Alma	ML	M	M	Jounieh Sarba	M	M	MH
Jouret Bedrane	L	ML	M	Jouret Mhad	L	L	M	Jouret Termos	ML	ML	M
Kfar Debiane	VL	L	M	Kfar Tay Kesrouane	VL	L	M	Kfar Yassine	M	M	MH
Kfour Kesrouane	L	ML	M	Kharayeb Nahr Ibrahi	L	ML	M	Klayaat Kesrouane	L	L	M
Maarab	L	L	M	Maaysra Kesrouane	L	ML	M	Mayrouba	L	ML	M
Mazraat Er-Ras	ML	M	M	Mazraat Mrah El-Mir	L	L	M	Mchaa El Ftouh	L	ML	M
Mchaa Faraya	VL	ML	M	Mchaa Kfar Dibiane	L	M	M	Mghaer	VL	L	M
Mradiyah	L	ML	M	Nahr Ed-Dahab	VL	L	M	Nammoura Kesrouane	L	L	M
Ouata El Jaouz	L	L	M	Ouata Sillam	M	M	MH	Raachine	L	L	M
Rayfoun	L	L	M	Safra Kesrouane	M	M	M	Shayle Kesrouane	L	L	M
Tabarja	ML	M	M	Yahchouch	L	L	M	Zaaytreh	L	ML	M
Zeytoun	ML	ML	M	Zouk Mikael	M	M	MH	Zouk Mosbeh	M	M	MH

Baalbek_Hermel

Baalbek

Municipality	23-Feb	24-Feb	25-Feb	Municipality	23-Feb	24-Feb	25-Feb	Municipality	23-Feb	24-Feb	25-Feb
Aadous	M	M	M	Aamchki	L	M	M	Aarsal	L	M	M
Ain Baalbek	ML	M	M	Ain Bourday	ML	M	M	Ain El-Benye	ML	M	M
Ain El-Jaouz Baalbek	L	M	M	Ain El-Siya Chadoura	L	M	M	Al Khodr Baalbek	ML	M	M
Al Nabi Chit	ML	M	M	Aynata Baalbek	L	M	M	Baalbek	M	M	M
Bachwat	L	ML	M	Barqa	VL	L	M	Bednayel Baalbak	ML	M	M
Beit Chama	ML	M	M	Bijjaje	L	M	M	Bouday	L	ML	M
Brital	ML	M	M	Btadi	L	M	M	Chaat	ML	M	M
Chaibe	L	M	M	Chlifa	ML	M	M	Chmestar	ML	M	M
Dar El-Oussa	L	ML	M	Deir El-Ahmar	L	M	M	Deir Mar Maroun Baal	L	M	M
Douris	M	M	M	Fakiha	ML	M	M	Hadath Baalbek	ML	M	M
Ham	ML	M	M	Haour Taala	ML	M	M	Hizzine	ML	M	M
Hlebta	L	ML	M	Hosh Barada	M	M	M	Hosh El Dahab	M	M	M
Hosh El Snid	M	M	M	Hosh El-Nabi	M	M	M	Hosh El-Rafiq	M	M	M
Hosh Tal Safiya	M	M	M	Hrebta	L	M	M	laat	M	M	M
Jebaa	ML	M	M	Jenta	ML	M	M	Kfar Dabach	M	M	M
Kfar Dane	ML	M	M	Khraibeh El-Hermel	L	M	M	Khreibet Baalbek	ML	M	M
Kneisset Baalbek	ML	M	M	Labueh	L	M	M	Maarboun	ML	M	M
Majdaloun	M	M	M	Maqneh	ML	M	M	Mazraat Beit Mcheik	ML	M	M
Misraya	M	M	M	Mograq	ML	M	M	Nabha El-Damdoum	L	M	M
Nabi Chbay	ML	M	M	Nabi Osman	ML	M	M	Nahleh baalbek	L	M	M
Ouadi El-Oss	VL	L	M	Qaa Baayoun	ML	M	M	Qaa Jouar Maqiye	M	M	M
Qaa Ouadi El-Khanzir	ML	M	M	Qah Baalbek	ML	M	M	Qarha Baalbek	L	M	M

Qsarnaba	ML	M	M	Ram Baalbek	L	ML	M	Ras Baalbek El Sahl	L	M	M
Ras Baalbek El-Charq	ML	M	M	Riha	L	M	M	Saaide	ML	M	M
Sboubba	L	M	M	Seriine El-Tahta	M	M	M	Slouqi	L	M	M
Taiba Baalbek	M	M	M	Talia	M	M	M	Taraiya	L	M	M
Temnin El Fawqa	ML	M	M	Temnin El-Tahta	ML	ML	M	Tfail	ML	M	M
Yahfoufa	ML	M	M	Yammouneh	L	M	M	Younine	ML	M	M
Zboud	L	M	M								

Hermel

Municipality	23-Feb	24-Feb	25-Feb	Municipality	23-Feb	24-Feb	25-Feb	Municipality	23-Feb	24-Feb	25-Feb
Charbine El-Hermel	L	L	M	Hermel Jbab	L	M	M	Hermel	ML	M	M
Maaysra El-Hermel	L	ML	M	Michaa Mrajhine	L	ML	M	Ouadi Faara	L	ML	M
Ras Baalbek - Ouadi	L	M	M	Ras Baalbek El Gharb	L	ML	M	Zighrine	L	L	M

Akkar

Akkar

Municipality	23-Feb	24-Feb	25-Feb	Municipality	23-Feb	24-Feb	25-Feb	Municipality	23-Feb	24-Feb	25-Feb
Aain Tinta	ML	M	M	Aaiyat	L	M	M	Aakkar El-Aatiqa	L	L	M
Aamar Akkar	M	M	M	Aamar El Baykat	ML	M	M	Aamayer	M	M	M
Aamriyet Akkar	ML	M	M	Aandqet	L	ML	M	Aarmeh	ML	M	M
Aarqa	ML	M	M	Aawaynat	ML	M	M	Aayoun Akkar	L	M	M
Abboudiye	ML	M	M	Ain El-Zeit	ML	M	M	Ain Yaaqoub	L	ML	M
Akroum	ML	M	M	Aridet Cheikh Zennad	ML	M	M	Baldeh w Mazraat Bal	L	M	M
Barcha	ML	M	M	Bardeh	ML	M	M	Bebnine	M	M	M
Beino	L	M	M	Beit Ayoub	L	M	M	Beit El-Haouch	ML	M	M
Beit Mellat	L	M	M	Beit Younes	L	ML	M	Berbara Akkar	ML	M	M
Berqayel	ML	M	M	Bezbina	L	L	M	Bireh Akkar	ML	M	M
Borj	L	M	M	Bqerezla	L	M	M	Bzal	L	ML	M
Chane	L	L	M	Chaqdouf	L	M	M	Charbila	ML	M	M
Cheikh Mohammad	ML	M	M	Cheikh Taba Es-Sahl	ML	M	M	Cheikh Taba	ML	M	M
Cheikh Zennad	ML	M	M	Cheikhlar	ML	M	M	Chir Hmairine	ML	M	M
Daghle	ML	M	M	Dahr Laissine	ML	M	M	Darine	ML	M	M
Dawra	L	ML	M	Dawsa w Baghdadi	ML	M	M	Dayret Nahr El-Kabir	M	M	M
Deir Dalloum	M	M	M	Deir Jennine	L	M	M	Denbou	L	ML	M
Dibbabiyyeh	ML	M	M	Douair Aadwiyeh	ML	M	M	Fassikine	ML	M	M
Fnaydek	VL	L	M	Fraydes Akkar	ML	M	M	Ghazayle	ML	M	M
Habchit	L	L	M	Hakour	ML	M	M	Halba	ML	M	M
Haouchab	ML	M	M	Hayssat	ML	M	M	Haytla	ML	M	M
Hayzouq	L	M	M	Hedd	L	M	M	Hmaira Akkar	L	M	M
Hmaiss Akkar	ML	M	M	Hnaider	M	M	M	Hokr Ed-Dahri	ML	M	M
Hokr Etti	ML	M	M	Hokr Jouret Srar	ML	M	M	Houaich	L	ML	M
Hrar	L	ML	M	Idbil	ML	M	M	Ilal	ML	M	M
Janine	ML	M	M	Jdeidet El-Joumeh	ML	M	M	Jdeidet El-Kaiteh	ML	M	M
Jebayel	L	M	M	Kafr	L	ML	M	Kafr	ML	M	M
Karm Asfour	ML	M	M	Kfar Melki Akkar	ML	M	M	Kfar Noun	L	M	M
Kfarharra	ML	M	M	Khalsa	ML	M	M	Kharnoubet Akkar	ML	M	M

Khirbet Daoud Aakkar	ML	M	M	Khirbet El Remmane	ML	M	M	Khirbet Shar	ML	M	M
Khoreybet El-Jindi	ML	M	M	Khreibet Aakkar	L	M	M	Kneisset Aakkar	ML	M	M
Kneisset Hnaider	M	M	M	Knisse	ML	M	M	Kroum El-Aarab	ML	M	M
Kwachra	ML	M	M	Kweykhat	ML	M	M	Machta Hammoud	ML	M	M
Majdala	ML	M	M	Majdel Akkar	ML	M	M	Mar Touma	ML	M	M
Marlaya Melhem	ML	M	M	Mashha	ML	M	M	Massoudiye	ML	M	M
Mazraat Beit Ghattas	ML	M	M	Mazraat En-Nahriye	ML	M	M	Mechmech	VL	L	M
Memneh	VL	L	M	Mhammara	M	M	M	Mighraq Aakkar	ML	M	M
Minyara	ML	M	M	Moqayteh	M	M	M	Mounjez	ML	M	M
Msalla	ML	M	M	Mzeihmeh	ML	M	M	Nfaiseh	ML	M	M
Noura Et-Tahta	ML	M	M	Ouadi El-Haour	ML	M	M	Ouadi El-Jamous	M	M	M
Ouyoun El-Ghizlane	ML	M	M	Qaabarine	ML	M	M	Qabaait	L	ML	M
Qachlaq	ML	M	M	Qantara Aakkar	ML	M	M	Qarha Aakkar	M	M	M
Qarqaf	ML	M	M	Qboula	L	M	M	Qleiaat Aakkar	ML	M	M
Qloud El-Baqie	L	M	M	Qobaiyat Aakkar	L	ML	M	Qobbat Chamrat	M	M	M
Qorayat	L	ML	M	Qornet Aakkar	L	M	M	Qsair Aakkar	ML	M	M
Rahbe	L	M	M	Rihaniyet Aakkar	ML	M	M	Rmah	ML	M	M
Rmoul	ML	M	M	Saadine	ML	M	M	Sadaqa	L	M	M
Saidnaya	ML	M	M	Sammouniye	ML	M	M	Sayssouq	ML	M	M
Semmaqiye	ML	M	M	Semmaqli	M	M	M	Sfinet El-Dreib	ML	M	M
Sfinet El-Qaitaa	L	ML	M	Sindyanet Zeidane	L	M	M	Souaisset Aakkar	L	M	M
Srar	ML	M	M	Tal Abbas El Gharby	ML	M	M	Tal Abbas El-Charqy	ML	M	M
Tal Biret	ML	M	M	Tal Hmayra	ML	M	M	Tal Maayan Tal Kiri	ML	M	M
Tal Sibel	ML	M	M	Tallet Chattaha	ML	M	M	Tikrit	L	M	M
Tleil	ML	M	M	Tshea	VL	L	M	Zawarib	ML	M	M
Zouq El Hosniyeh	ML	M	M	Zouq El-Haddara	ML	M	M	Zouq El-Hbalsa	L	M	M
Zouq El-Moqachrine	ML	M	M								

Sud

Sour

Municipality	23-Feb	24-Feb	25-Feb	Municipality	23-Feb	24-Feb	25-Feb	Municipality	23-Feb	24-Feb	25-Feb
Aaiyeh	VL	M	M	Aalma El-Chaab	L	L	M	Aaytit	L	M	M
Abbassiyeh Sour	L	M	M	Abou Chech	L	ML	M	Ain Abou Abdallah	L	M	M
Ain Baal	L	M	M	Arzoun	VL	ML	M	Aziyeh	VL	L	M
Baflaya	VL	M	M	Barich	VL	M	M	Batouliyah	L	M	M
Bayad	VL	M	M	Bazouriyeh	L	M	M	Bediass	VL	M	M
Bestiyat	VL	M	M	Borj El Chemali	L	M	M	Borj En-Naqoura	L	ML	M
Borj Rahhal	L	M	M	Boustane	VL	M	M	Btaychiyah	L	ML	M
Chaaitiye	L	M	M	Chameh	L	L	M	Chehabiye	VL	ML	M
Chehour	VL	L	M	Chihine	VL	ML	M	Debaal Sour	VL	M	M
Deir Amess	VL	ML	M	Deir Kifa	VL	ML	M	Deir Qanoun El-Ain	L	M	M
Deir Qanoun El-Naher	VL	M	M	Derdghaiya	VL	ML	M	Dhayra	VL	ML	M
Halloussiyeh	VL	M	M	Hamoul	VL	L	M	Hanaouey	L	M	M
Henniye	L	M	M	Hmairi Sour	VL	M	M	Iskandarouna Sour	L	L	M
Jbal El Botom	VL	ML	M	Jebbin	L	ML	M	Jennata	VL	M	M
Jijim	VL	L	M	Jouaiya	VL	M	M	Kneisset Sour	L	M	M

Maarake	VL	M	M	Maaroub	VL	M	M	Majadel	VL	M	M
Majdalzoun	L	ML	M	Mansouri Sour	L	M	M	Marnba	VL	L	M
Marouahine	VL	ML	M	Mazraat El-Zalloutiy	L	M	M	Mazraat Mechref	L	M	M
Mazraat Tayr Semhat	VL	L	M	Mheilib	L	M	M	Neffakhiyeh	VL	ML	M
Niha Sour	VL	ML	M	Ouadi Jilo	L	M	M	Qana	VL	M	M
Qolaileh Sour	L	M	M	Rechknayan	VL	ML	M	Rmadiyah	L	M	M
Selha Sour	VL	ML	M	Siddiqine	VL	M	M	Sour	L	M	M
Srifa	VL	ML	M	Tayr Debbe	L	M	M	Tayr Felsay	VL	M	M
Tayr Harfa	VL	ML	M	Touayri	VL	L	M	Toura	VL	M	M
Yanouh Sour	VL	M	M	Yarine	L	M	M	Zebqine	VL	L	M

Saida

Municipality	23-Feb	24-Feb	25-Feb	Municipality	23-Feb	24-Feb	25-Feb	Municipality	23-Feb	24-Feb	25-Feb
Aanqoun	L	M	M	Aaqtanit	L	M	M	Aarab Ej-Jall	VL	M	M
Aarab Tabbaya	L	M	M	Abra Saida	L	M	M	Adloun	L	M	M
Adousiyeh	L	M	M	Ain-El-Deleb	L	M	M	Arzai	L	M	M
Babliyah	VL	M	M	Barty	L	ML	M	Bissariyeh	L	M	M
Bnaafoul	L	M	M	Bqosta	L	M	M	Bramiy	L	M	M
Daoudiyeh	VL	M	M	Dareb El-Sim	L	M	M	Erkay	L	M	M
Ghassanieh	L	M	M	Ghazieh	L	M	M	Hajjeh	L	M	M
Haret Saida	L	M	M	Hartiyeh	L	M	M	Hlaliye Saida	L	M	M
Insariyat	L	M	M	Jazira Saida	L	M	M	Kafar Bit	L	M	M
Kaoutariyet El-Siyad	L	M	M	Kfar Chellal	L	M	M	Kfar Hatta Saida	L	M	M
Kfar Milke Saida	L	M	M	Khartoum	L	M	M	Khaziz	L	M	M
Khirbet Ed-Douair Sa	VL	M	M	Khirbet El-Bassal	L	M	M	Khrayeb Saida	L	M	M
Loubieh	L	M	M	Maghdouche	L	M	M	Majdelyoun	L	M	M
Matariyet El-Choumar	L	M	M	Matayriyeh	L	M	M	Mazraat 'Mseileh	L	M	M
Mazraat 'Snaiber	VL	M	M	Mazraat Aarab Soukka	VL	M	M	Mazraat Deir Taqla	VL	M	M
Mazraat El Yahoudiye	VL	M	M	Mazraat El-Housseini	L	M	M	Mazraat El-Mhaydaleh	L	M	M
Mazraat El-Ouasta	VL	M	M	Mazraat Jamjim	L	M	M	Mazraat Kaoutariyet	L	M	M
Mazraat Kfar Badda	L	M	M	Mazraat Oussamiyat	L	M	M	Mazraat Sari	L	M	M
Mazraat Sinai	VL	M	M	Meemariyeh	L	M	M	Merouaniyeh	L	M	M
Miyeh ou Miyeh	L	M	M	Najjariyeh	L	M	M	Qaaqaiyat El-Snaouba	VL	M	M
Qnarit	L	M	M	Qraiye Saida	L	M	M	Saida Ed-Dekermane	L	M	M
Saida El-Oustani	L	M	M	Saida El-Qadimeh	L	M	M	Saida Kefraya	L	ML	M
Saksakiyeh	L	M	M	Salhigh Saida	L	M	M	Sarafand	L	M	M
Sfenta	VL	ML	M	Tafahta	VL	M	M	Tanbourit	L	M	M
Tebna	VL	M	M	Zaghdraiya	L	M	M	Zeita	L	M	M
Zrariyeh	L	M	M								

Jezzine

Municipality	23-Feb	24-Feb	25-Feb	Municipality	23-Feb	24-Feb	25-Feb	Municipality	23-Feb	24-Feb	25-Feb
Ain El-Mir (El Estab	L	M	M	Anane	VL	L	M	Aramta	L	ML	M
Ariya	L	L	M	Aychiyeh	L	ML	M	Azour	VL	L	M
Baba	VL	L	M	Bayssour Jezzine	L	M	M	Benoueteh Jezzine	VL	L	M
Bhannine	L	L	M	Bisri	VL	L	M	Bkassine	VL	L	M
Bouslaya	VL	L	M	Btedine El-Leqech	VL	L	M	Chbail	VL	L	M
Choualiq Jezzine	L	M	M	Dahr Ed-Deir	L	L	M	Deir El Qattine	VL	L	M

Demachqiyeh	L	M	M	Ghabbatiyeh	L	L	M	Harf Jezzine	VL	L	M
Hassaniyeh	L	M	M	Haytouleh	VL	ML	M	Haytura	VL	L	M
Hidab	VL	L	M	Homsiyeh	VL	L	M	Jabal Toura	VL	L	M
Jarmaq	L	M	M	Jensnaya	L	M	M	Jernaya	L	M	M
Jezzine	L	ML	M	Karkha	L	ML	M	Kfar Falous	VL	ML	M
Kfar Houna	L	L	M	Kfar Jarrah	L	M	M	Lebaa	L	M	M
Louayzet Jezzine	VL	L	M	Machmouche	VL	L	M	Mahmoudiyeh Jezzine	L	M	M
Maknounye Jezzine	VL	L	M	Maraat Ouazaiyeh	L	ML	M	Mazraat Daraya	L	L	M
Mazraat El-Aarqoub	L	L	M	Mazraat El-Mathane	VL	L	M	Mazraat El-Rahbane	VL	L	M
Mazraat Khallet Khaz	L	L	M	Mazraat Louzid (Loua	VL	L	M	Mazraat Qrouh	VL	ML	M
Mazraat Tamra	L	M	M	Mazraat Zighrine Jez	L	L	M	Mazraat	L	L	M
Mharbiyeh	L	M	M	Midane Jezzine	VL	L	M	Mjeydel Jezzine	L	M	M
Mlikh	VL	L	M	Mrah El-Hbasse	L	M	M	Ouadi Baanqoudaine	L	M	M
Ouadi El-Laymoun	L	M	M	Ouardiyeh	VL	L	M	Qabaa Jezzine	VL	L	M
Qatrani	L	L	M	Qaytouleh	VL	L	M	Qtaleh Jezzine	VL	L	M
Rihane Jezzine	L	ML	M	Rimat	L	L	M	Roum	VL	L	M
Roummanet	VL	ML	M	Sabbah	VL	L	M	Saydoun	VL	L	M
Sfaray	VL	L	M	Snaya	VL	L	M	Sojoud	L	L	M
Srayri	L	L	M	Taaid	VL	L	M	Wadi Jezzine	VL	L	M
Zhalta	VL	L	M								

Bekaa

West Bekaa

Municipality	23-Feb	24-Feb	25-Feb	Municipality	23-Feb	24-Feb	25-Feb	Municipality	23-Feb	24-Feb	25-Feb
Aammiq BG	ML	ML	M	Ain El Tineh BG	L	ML	M	Ain Zebdeh	L	L	M
Ana	L	ML	M	Aytanit	L	L	M	Baaloul BG	L	ML	M
Bab Mareh	L	ML	M	Chouberqiye Aammiq	ML	ML	M	Dakoue	ML	ML	M
Deir Ain El-Jaouze	L	L	M	Deir Tahniche	ML	ML	M	Ghaza	ML	ML	M
Harime El-Soughra	ML	ML	M	Hoch Harimeh	ML	ML	M	Jazira BG	ML	ML	M
Jib Jennine	L	ML	M	Kamed-El-Laouz	L	ML	M	Kefraya BG	L	L	M
Khiara El Atika	ML	ML	M	Khiara	ML	ML	M	Khirbet Qanafar	L	ML	M
Lala	L	ML	M	Lebbaya BG	L	L	M	Loussa	L	ML	M
Machghara	L	ML	M	Manara (Hammara) BG	L	L	M	Mansoura BG	ML	ML	M
Marej BG	ML	ML	M	Maydoun	L	ML	M	Ouaqf BG	ML	ML	M
Qaraaoun	L	ML	M	Qelya	ML	ML	M	Raouda (Istabel)	ML	ML	M
Saghbine	L	L	M	Sohmor	ML	ML	M	Soltan Yacoub el Ara	ML	ML	M
Souairy	ML	ML	M	Sultan Yaacoub	ML	ML	M	Tal Znoub	ML	ML	M
Yehmor BG	L	L	M	Zilaya	L	L	M				

Zahle

Municipality	23-Feb	24-Feb	25-Feb	Municipality	23-Feb	24-Feb	25-Feb	Municipality	23-Feb	24-Feb	25-Feb
Aanjar (Haouch Mouss	ML	ML	M	Ablah	ML	ML	M	Ain Kfarzabad	ML	ML	M
Ali-El-Nahri	ML	M	M	Bar Elias	ML	ML	M	Bouarej	ML	ML	M
Cheberqiyet Tabet	ML	ML	M	Chtaura	ML	ML	M	Deir El Ghazal	ML	M	M
Delhamiyet Zahle	ML	ML	M	Ferzol	ML	M	M	Haouch El-Ghanam	ML	M	M
Haouch Es-Siyadeh	ML	ML	M	Haouch Hala	ML	ML	M	Haouch Mandara	ML	ML	M

Haouch Qayssar	ML	ML	M	Hezerta	ML	M	M	Hosh Moussa	M	ML	M
Jdita	ML	ML	M	Kfarzabad	ML	M	M	Ksara	ML	ML	M
Majdel Aanjar	L	ML	M	Makssi	ML	ML	M	Massa	M	M	M
Mazraat Er-Remtaniye	ML	M	M	Mrayjat Zahle	L	ML	M	Mzaraa Zahle	ML	ML	M
Nabi Ayla	ML	M	M	Nasriyet Rizk	ML	M	M	Nasriyet Zahle	ML	ML	M
Niha Zahle	ML	M	M	Ouadi Ed-Deloum	L	ML	M	Ouadi El-Arayech	ML	M	M
Qaa El Rim	ML	M	M	Qab Elias	ML	ML	M	Qousaya	ML	M	M
Rhit	M	M	M	Riyak	ML	ML	M	Saadnayel	ML	ML	M
Taal El-Akhdar	ML	ML	M	Taalbeya	ML	ML	M	Taanayel	ML	ML	M
Talamara	ML	ML	M	Tcheflik Edde Haouch	ML	ML	M	Tcheflik Qiqano	ML	ML	M
Terbol Zahle	M	ML	M	Touaite Zahle	ML	M	M	Zahle Aradi	ML	M	M
Zahle El-Berbara	ML	M	M	Zahle El-Maallaqa	ML	M	M	Zahle El-Midane	ML	M	M
Zahle Er-Rassiye	ML	M	M	Zahle Haouch El-Ouma	ML	ML	M	Zahle Haouch El-Ouma	ML	M	M
Zahle Haouch Ez-Zara	ML	M	M	Zahle Maalaqa Aradi	ML	M	M	Zahle Mar Antonios	ML	M	M
Zahle Mar Elias	ML	M	M	Zahle Mar Gerios	ML	M	M	Zahle Saydet En-Naja	ML	M	M
Zebdoul	ML	ML	M								

Rachaiya

Municipality	23-Feb	24-Feb	25-Feb	Municipality	23-Feb	24-Feb	25-Feb	Municipality	23-Feb	24-Feb	25-Feb
Ain Arab Rachaiya	L	ML	M	Ain Ata	L	ML	M	Ain Harche	L	ML	M
Aqabe Rachaya	L	ML	M	Ayha	ML	M	M	Ayta El Fokhar	ML	ML	M
Bakifa Rachaya	L	ML	M	Bakka	ML	ML	M	Beit Lahya	ML	ML	M
Bireh Rachaiya	L	ML	M	Daher El Ahmar	L	ML	M	Deir El-Achayer	M	M	M
Heloua Rachaiya	M	ML	M	Hoch El Qannabeh Rac	L	ML	M	Kaoukaba Bou Arab	L	ML	M
Kfar Danis	L	ML	M	Kfar Mechki	ML	ML	M	Kfar Qouq	ML	ML	M
Kherbet Rouha	L	ML	M	Majdel Balhiss	L	ML	M	Mdoukha	L	ML	M
Mhaydseh Rachaiya	L	ML	M	Nabi Safa	L	ML	M	Rachaiya	L	ML	M
Rafid Rachaiya	L	ML	M	Selsata (Mazraat Dei	L	L	M	Tannoura	ML	ML	M
Yanta	ML	ML	M								

Beyrouth

Beyrouth

Municipality	23-Feb	24-Feb	25-Feb	Municipality	23-Feb	24-Feb	25-Feb	Municipality	23-Feb	24-Feb	25-Feb
Achrafieh	ML	M	MH	Ain el-Mreisse	M	M	MH	Bachoura	M	M	MH
Beirut Central Distr	M	M	MH	Marfai	M	M	MH	Mazraa	M	M	MH
Medaouar	M	M	MH	Minet el-Hosn	M	M	MH	Mwssaitbeh	M	M	MH
Ras Beirut	M	M	MH	Rmeil	ML	M	MH	Saifi	M	M	MH
Zqaq el-Blat	M	M	MH								



نشرة الطقس الصادرة عن مصلحة الأرصاد الجوية بالمديرية العامة للطيران المدني

النشرة: المسائية

الاثنين : 22 شباط 2016

الحالة العامة : طقس متقلب نسبياً يسيطر على الحوض الشرقي للمتوسط يستقر تدريجاً اعتباراً من مساء يوم غد الثلاثاء .

الثلاثاء: غائم جزئياً الى غائم مع ضباب على المرتفعات ودون تعديل يذكر بدرجات الحرارة . تكون الاجواء مهيأة لتساقط امطار خفيفة متفرقة خاصة في المناطق الجنوبية نهاراً. تتساقط الثلوج على ارتفاع 1700 متر وما فوق.

الاربعاء: قليل الغيوم مع ارتفاع بدرجات الحرارة على الجبال والمناطق الداخلية.

الخميس: غائم جزئياً بسحب متوسطة مع ارتفاع ملحوظ بدرجات الحرارة

<u>الاربعاء</u>		<u>الثلاثاء</u>		<u>الاثنين</u>		درجات الحرارة المتوقعة	
17/12	20/12	17/12	20/11	16/12	19/11	صور	على الساحل
20/13		20/12		19/12		بيروت	
20/12		20/11		19/11		طرابلس	
13/7	13/6	11/6	11/5	10/6	10/5	بيصور	فوق الجبال
13/6		10/5		9/5		قرطبا	
-/-		-/-		-/-		فقرا	
9 / 2		صفر / 6		5 / 1-		الأرز	
16/9	16/8	14/8	14/7	13/7	13/6	القرعون	في الداخل
14/8		12/7		11/7		مرجعيون	
16/8		14/7		13/6		زحلة	

الرياح السطحية: جنوبية غربية الى جنوبية شرقية ، سرعتها بين 10 و 35 كلم/س.

الإنقشاع: متوسط

الرطوبة النسبية على الساحل: بين 55 و 80 %.

حرارة سطح الماء: 19 م°.

حال البحر: منخفض ارتفاع الموج.

أي ما يعادل: 763 ملم زئبق

الضغط الجوي: 1017 hPa.

ساعة غروب الشمس: 17:28

ساعة شروق الشمس: 06:16

كمية الأمطار المسجلة حتى الساعة السادسة صباحاً (ت.ع)				
السنة الماضية حتى	المعدل العام	المجموع	خلال 24	المحطات
708.2 ملم	619ملم	394.6ملم	18.2 ملم	بيروت - المطار
822.7 ملم	635ملم	777.9ملم	4.3ملم	طرابلس
646.3 ملم	443ملم	323.5	25.4ملم	زحلة