

Lebanon Fire Risk Bulletin



CIVIL DEDEFENCE

Refer to cadast condition.

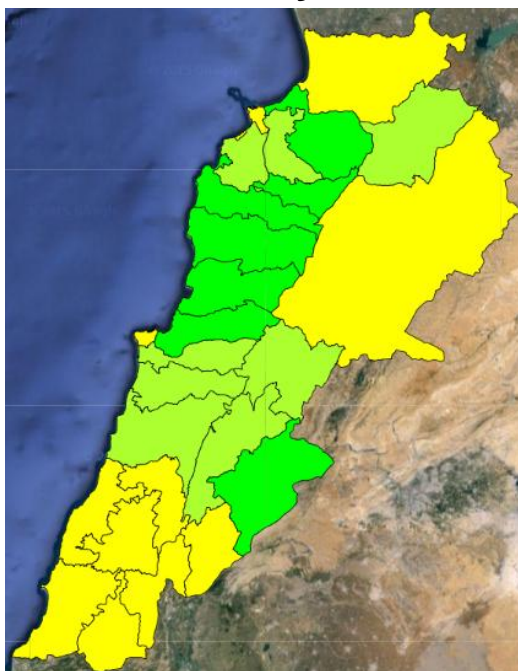
General description of potential fire risk situation

Symbol	Level of risk	Meaning and actions
VL	Very low	Very low fire risk. Controlled burning operations can be hardly executed due to high fuel moisture content. Normally wildfires self-extinguish.
L	Low	Low fire risk. Controlled burning operations can be executed with a reasonable degree of safety.
ML	Medium low	Medium-low fire risk. Controlled burning operations can be executed in safety conditions. All the fires need to be extinguished.
M	Medium	Medium fire risk. Controlled burning operations would be avoided. All the fires need to be very well extinguished.
M	Medium high	Controlled burning is not recommended. Open flame will start fires. Cured grasslands and forest litter will burn readily. Spread is moderate in forests and fast in exposed areas. Patrolling and monitoring is suggested. Fight fires with direct attack and all available resources.
H	High	Ignition can occur easily with fast spread in grass, shrubs and forests. Fires will be very hot with crowning and short to medium spotting. Direct attack on the head may not be possible requiring indirect methods on flanks. Patrolling and monitoring the territory is highly suggested.
E	Extreme	Ignition can occur also from sparks. Fires will be extremely hot with fast rate of spread. Control may not be possible during day due to long range spotting and crowning. Suppression forces should limit efforts to limiting lateral spread. Damage potential total. Patrolling and monitoring the territory is highly suggested.

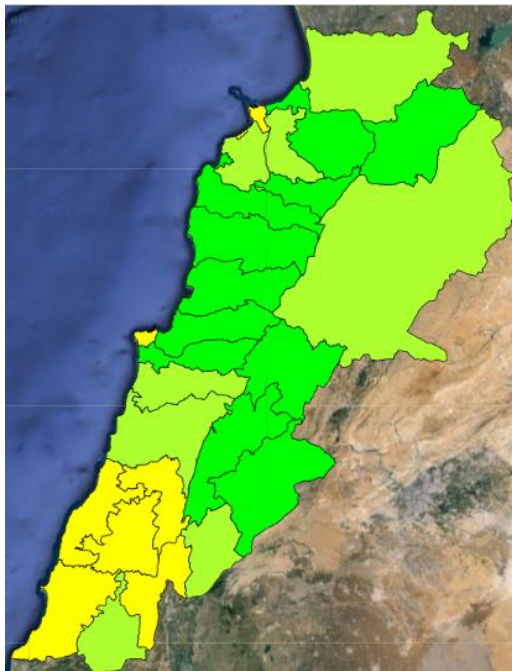
Beirut, 30 January 2016

FIRE RISK INDEX

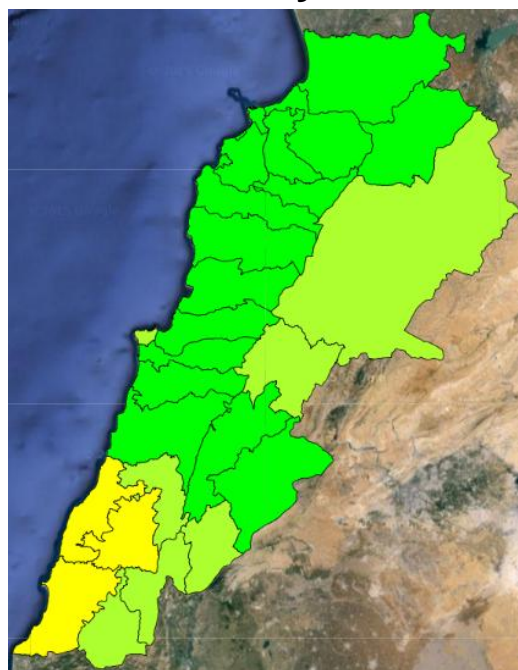
29 January 2016



30 January 2016



31 January 2016



1 February 2016

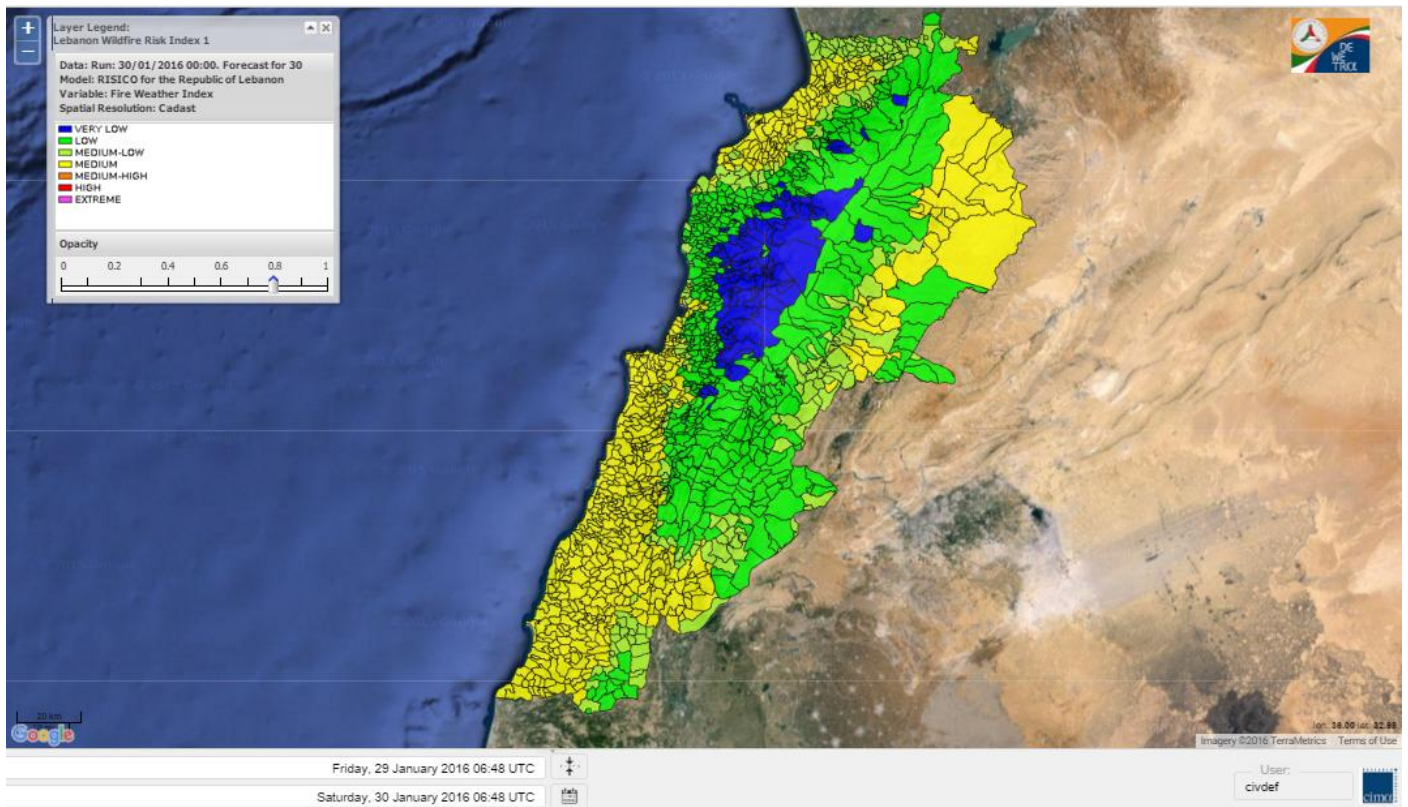


Layer Legend:
Lebanon Wildfire Risk Index 1

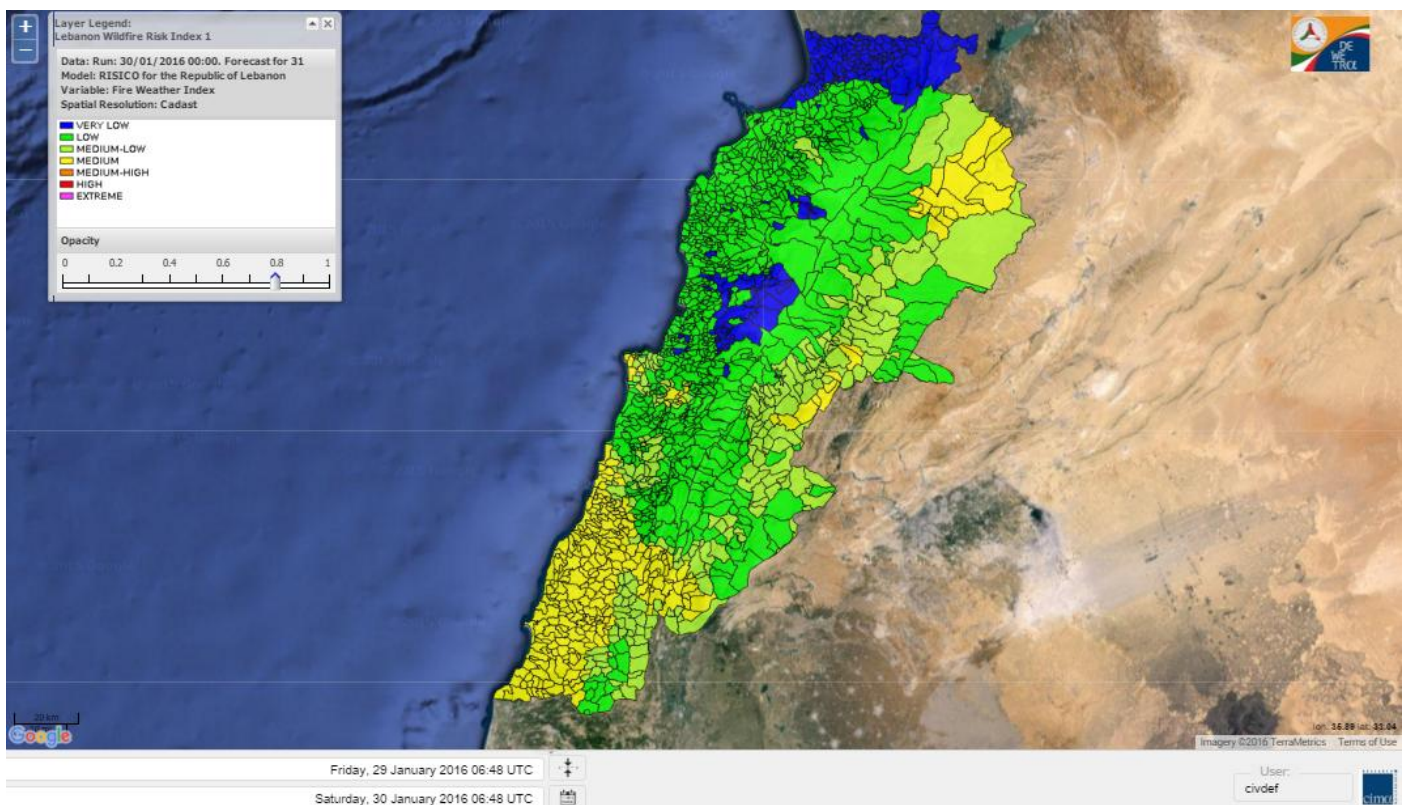
Data: Run: 30/01/2016 00:00. Forecast for 30
Model: RISICO for the Republic of Lebanon
Variable: Fire Weather Index
Spatial Resolution: Caza

- VERY LOW
- LOW
- MEDIUM-LOW
- MEDIUM
- MEDIUM-HIGH
- HIGH
- EXTREME

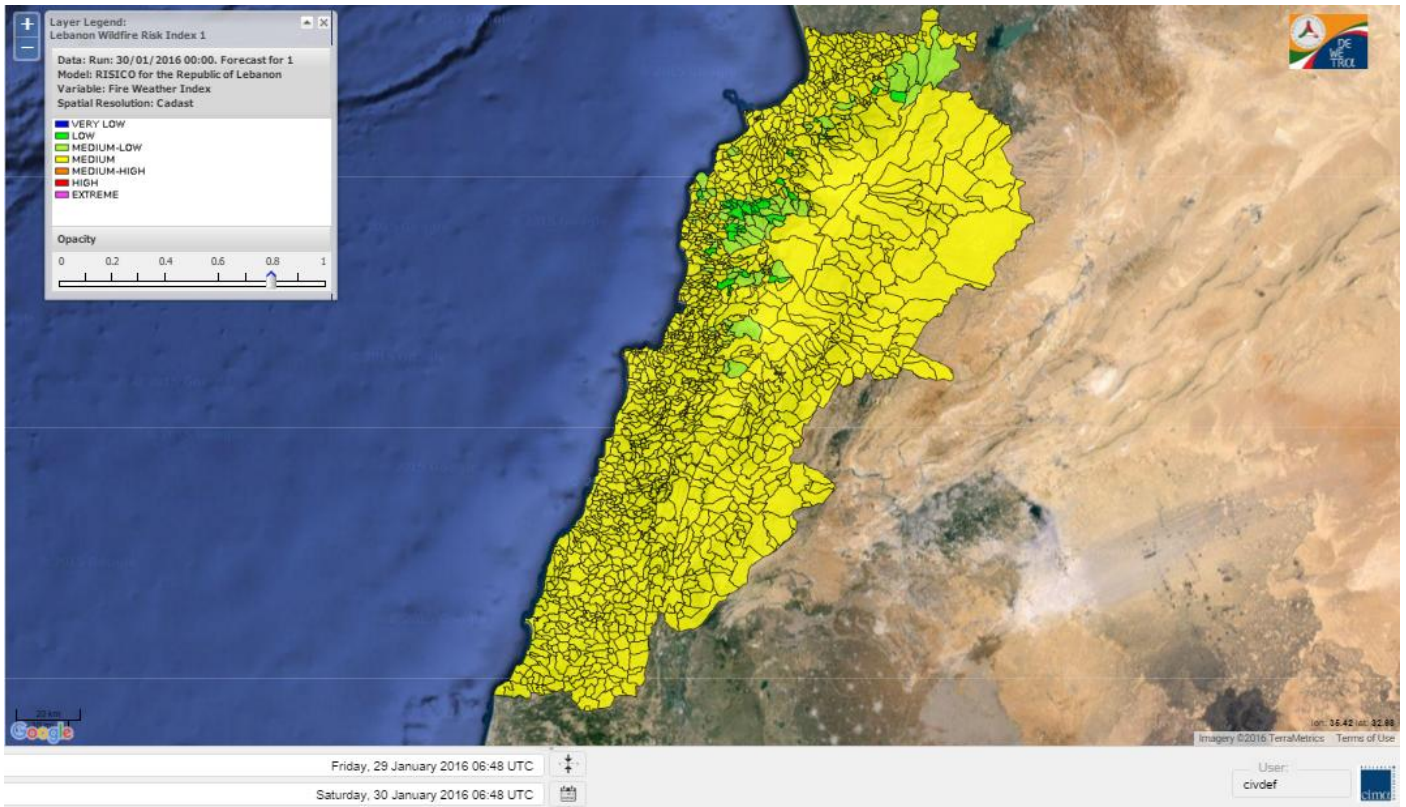
Lebanon for 30 January 2016



Lebanon for 31 January 2016



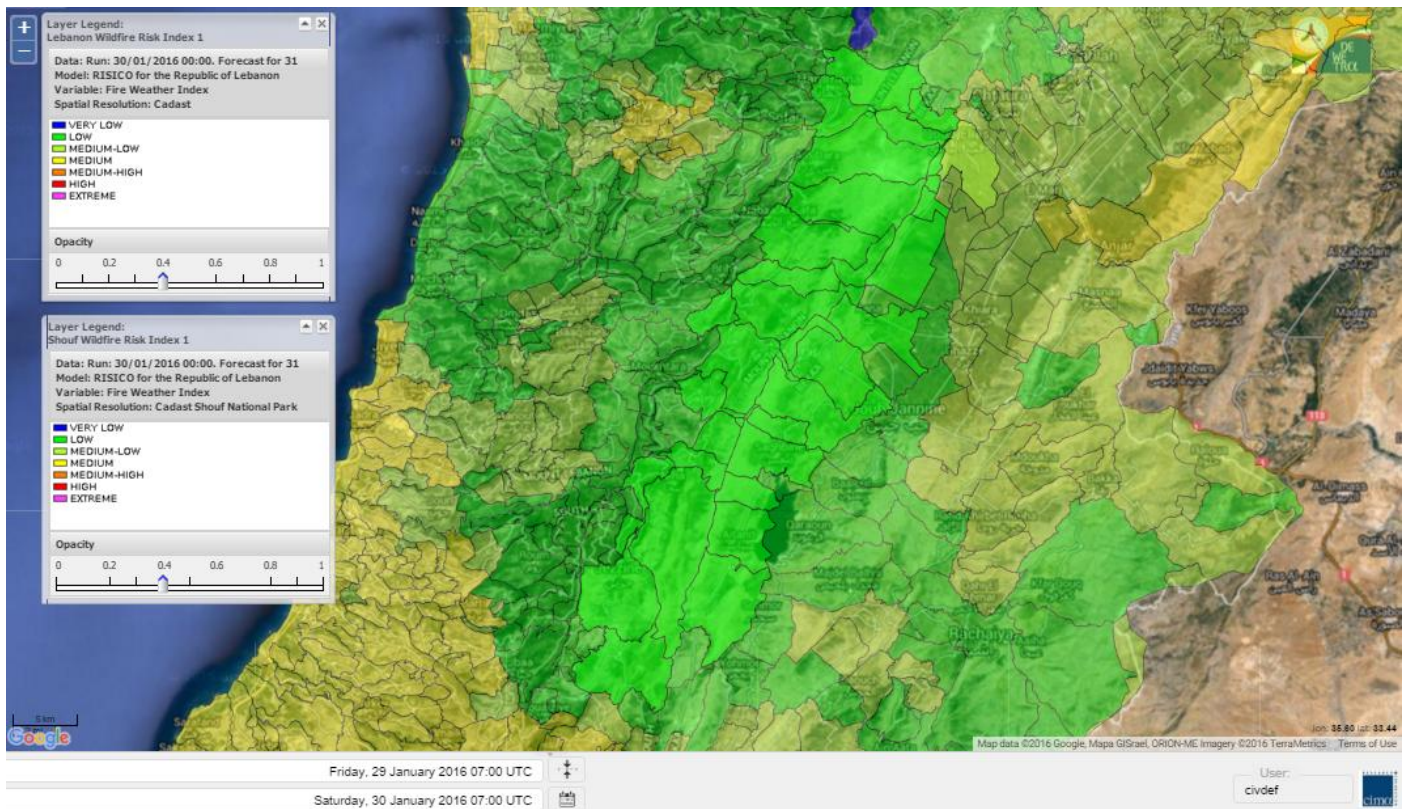
Lebanon for 1 February 2016



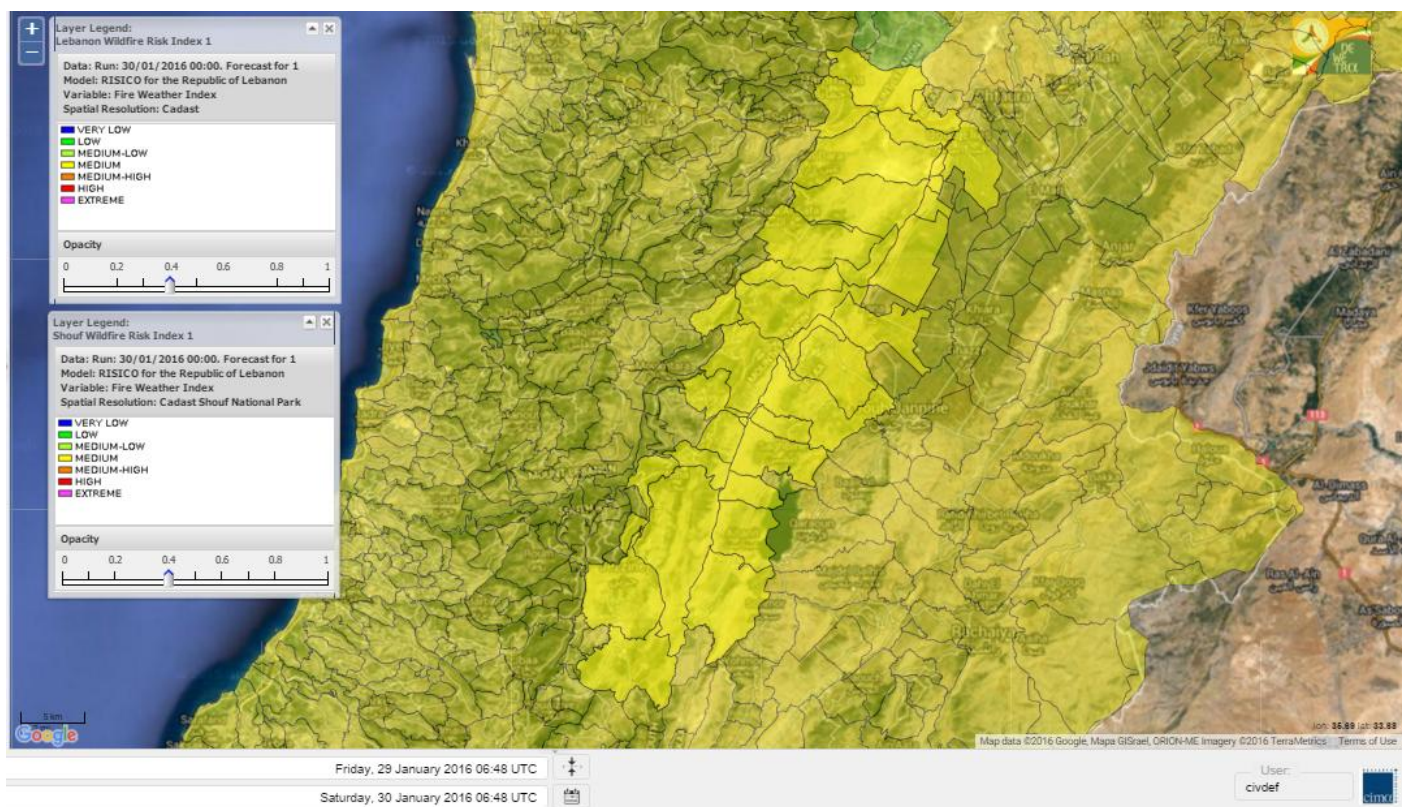
Shouf Biosphere Reserve Forecast for 30 January 2016



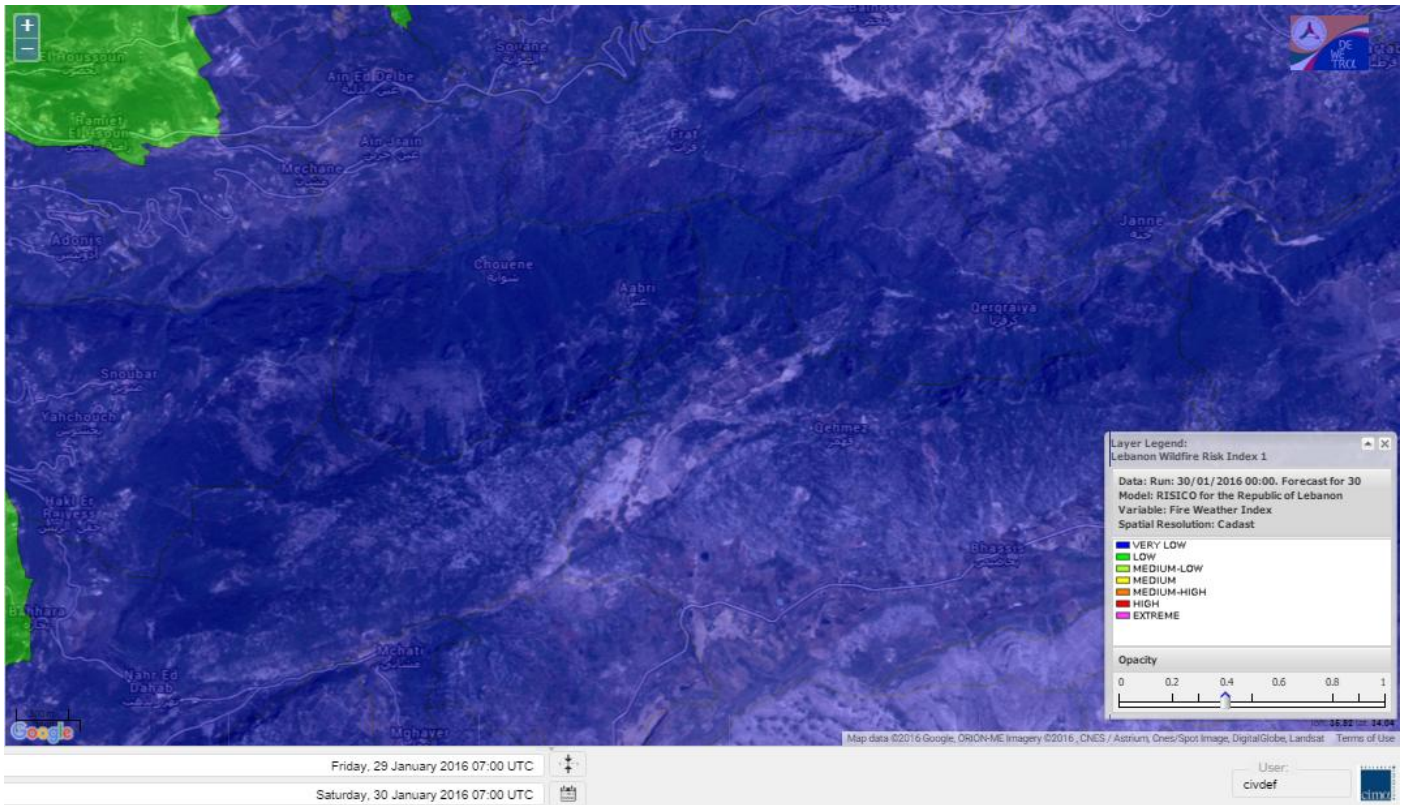
Shouf Biosphere Reserve Forecast for 31 January 2016



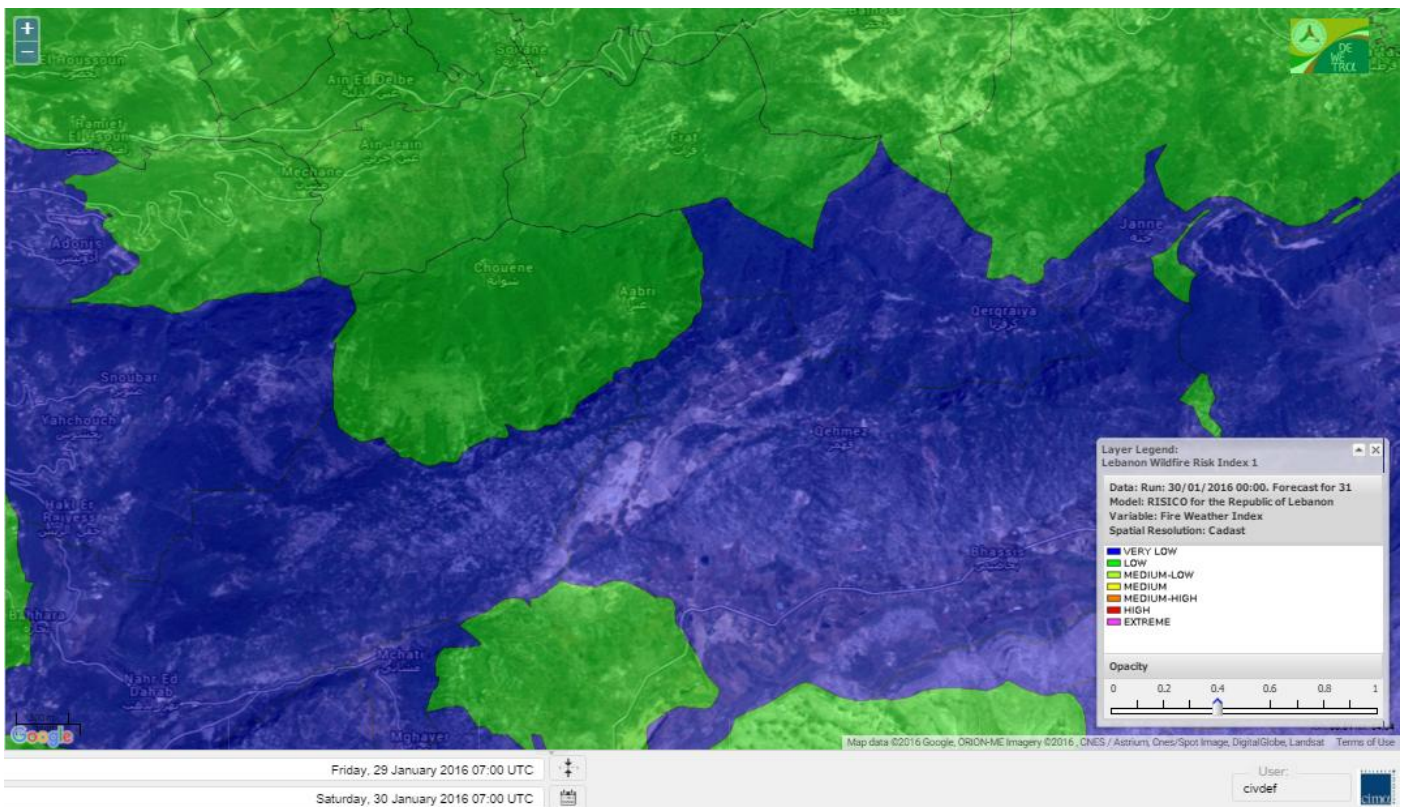
Shouf Biosphere Reserve Forecast for 1 February 2016



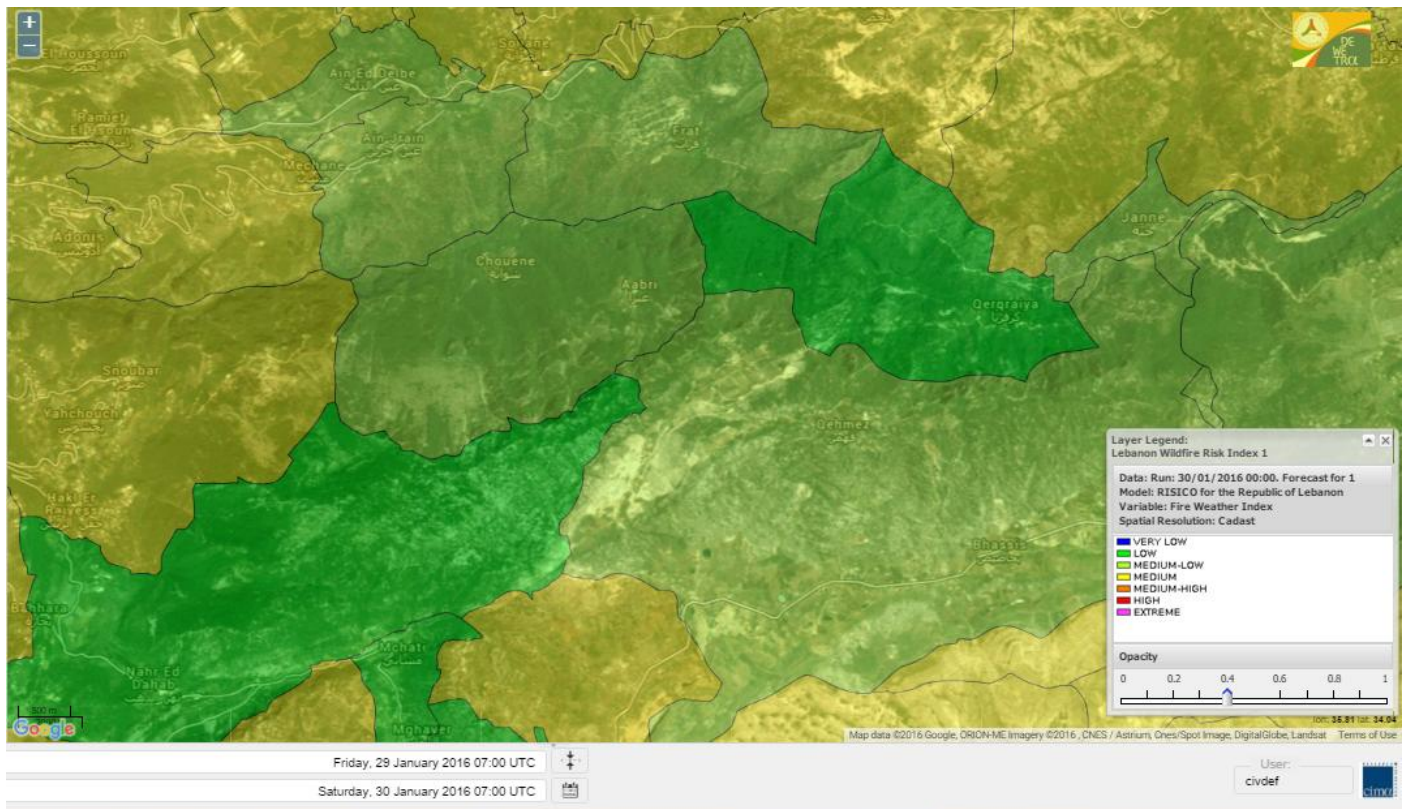
Jabal Moussa Reserve Forecast for 30 January 2016



Jabal Moussa Reserve Forecast for 31 January 2016



Jabal Moussa Reserve Forecast for 1 February 2016



Nord

Koura

Municipality	30-Jan	31-Jan	01-Feb	Municipality	30-Jan	31-Jan	01-Feb	Municipality	30-Jan	31-Jan	01-Feb
Aaba	M	L	M	Afsaddiq	ML	L	M	Ain Ekrine	ML	L	M
Amioun	ML	L	M	Anfeh	M	L	M	Badbhoun	M	L	M
Barghoun	M	L	M	Barsa	M	L	M	Batroumine	M	L	M
Bdebba	M	L	M	Bechmizine	ML	L	M	Bednayel El-Koura	L	L	M
Bhabbouch El-Koura	L	L	M	Bkeftine	M	L	M	Bnehran	L	L	M
Bqaiia El-Koura	M	L	M	Bsarma	M	L	M	Btaaboura	L	L	M
Bterram	M	L	M	Btouratij	M	L	M	Bziza	L	L	M
Dar Beehtar	L	L	M	Dar Chmezzine	ML	L	M	Deddeh	M	L	M
Deir El-Balamand	ML	L	ML	Fih	M	L	M	Hraiche	M	L	M
Ijdaabrine	L	L	M	Kaftoun	L	L	M	Kefraya El-Koura	M	L	M
Kfarakka	ML	L	M	Kfarhata	L	L	M	Kfarhazir	ML	L	M
Kfarkahel	M	L	M	Kfarsaroun	L	L	M	Kosba	ML	L	M
Mejdel el-Koura	L	L	M	Nakhle	M	L	M	Qalhat	ML	L	ML
Ras Masqa	M	L	M	Rechdibbine	ML	L	M	Zakroun	M	L	M
Zgharta El-Mtaouile	L	L	M								

Bcharre

Municipality	30-Jan	31-Jan	01-Feb	Municipality	30-Jan	31-Jan	01-Feb	Municipality	30-Jan	31-Jan	01-Feb
Aabdine	L	L	M	Bane	L	L	M	Barhelioun	L	L	M
Bazouone	VL	VL	ML	Becharre	VL	L	M	Beit Menzer	VL	L	M
Billa	VL	L	M	Blaouza	VL	L	M	Bqaa Kafra	VL	VL	M
Bqerqacha	VL	VL	M	Breissat	VL	L	ML	Dimane	VL	L	ML
Hadath El Jobbeh	VL	L	ML	Hadchit	VL	VL	M	Hasroun	VL	VL	ML
Mazraat Aassaf	VL	VL	L	Mazraat Bani Saab	VL	L	ML	Mchaa El-Jobbeh	L	VL	M
Metrit	L	L	M	Moghr El-Ahoual	L	L	M	Ouadi Qannoubine	VL	VL	L
Qanat	VL	L	ML	Qnayouer	VL	L	ML	Tourza	L	L	M

Batroun

Municipality	30-Jan	31-Jan	01-Feb	Municipality	30-Jan	31-Jan	01-Feb	Municipality	30-Jan	31-Jan	01-Feb
Aabrine	L	L	ML	Aalali	L	L	ML	Aartiz	VL	VL	L
Abdelli	L	L	ML	Ajdabra	L	L	ML	Assia	L	L	L
Basbina	L	L	M	Batroun	L	L	M	Bcheleh	VL	L	ML
Bechtoudar	L	L	L	Beit Chlala	L	L	L	Beit Kassab	VL	L	L
Bijdarfil	L	L	M	Bqesmaya	L	L	ML	Chatine	VL	L	ML
Chebtein	L	L	ML	Chekka	ML	L	M	Daael	L	L	L
Dahr Abi Yaghi	L	L	ML	Daraya El-Batroun	L	L	M	Deir Billa	L	L	ML
Deir Kfifane	L	L	M	Deir Mar Youhanna EL	VL	L	L	Deir Mar Youssef Jra	L	L	M
Douma	VL	L	ML	Douq	L	L	M	Eddeh El-Batroun	L	L	M
Ftihat El-Batroun	L	L	L	Ghouma	L	L	M	Hadtoun	VL	L	ML
Hamat	ML	L	ML	Harbouna	L	L	ML	Hardine	VL	L	L
Helta	L	L	L	Hery	M	L	M	Jebba	L	L	L
Jrabta El-Batroun	L	L	M	Jrane El-Batroun	L	L	M	Kfar Aabida	L	L	M
Kfar Halda	L	L	L	Kfarb Shlaimane	VL	VL	L	Kfarhatna	L	L	ML
Kfarhay	L	L	M	Kfarhelos	L	L	L	Kfifane	L	L	M

Kfour El Arabi	L	L	ML	Koubba	L	L	M	Kour	L	L	M
Mar Mama	VL	L	L	Masrah	VL	L	M	Mehmarch	L	L	ML
Mrah Chdid	L	L	M	Mrah El Ziyat	L	L	M	Mrah El-Hajj	VL	L	L
Nahle El-Batroun	L	L	L	Niha El-Batroun	L	L	ML	Oujah El-Hajjar	ML	L	M
Ouata Houb	VL	VL	ML	Qatnaaoun	L	L	ML	Racha	L	L	ML
Rachana	L	L	M	Rachkida	L	L	ML	Ram El-Batroun	VL	L	L
Ras Nakhach	ML	L	M	Selaata	M	L	M	Sghar	L	L	M
Smar Jbayl	L	L	M	Sourat El-Batroun	L	L	L	Tannourine El-Faouqa	VL	L	M
Tannourine Et-Tahta	VL	L	L	Thoum	L	L	M	Toula El-Batroun	L	L	M
Zan	L	L	ML								

Zgharta

Municipality	30-Jan	31-Jan	01-Feb	Municipality	30-Jan	31-Jan	01-Feb	Municipality	30-Jan	31-Jan	01-Feb
Aachach	M	L	M	Aalma	M	L	M	Aarde	M	L	M
Aintourine	L	L	M	Arabet Qozhaya	L	L	M	Arde	M	L	M
Arjis	M	L	M	Asnoun	M	L	M	Ayto	L	L	M
Basloukit	L	L	M	Bchannine	M	L	M	Besebeel	M	L	M
Bhairret Toula	VL	L	M	Bnachee	ML	L	M	Boussit	M	L	M
Danha	M	L	M	Daraiya Zgharta	ML	L	M	Deir Jdeide	M	L	M
Ehden	L	L	M	Halan	M	L	M	Hariq Zgharta	M	L	M
Houakir	ML	L	ML	Hraiqis	M	L	M	Iaal	M	L	M
Ijbaa	L	L	M	Karm Saddeh	L	L	M	Kfarchakhna	M	L	M
Kfardlaqous	M	L	M	Kfarfou	ML	L	M	Kfarhata Zgharta	M	L	M
Kfarhoura	M	L	M	Kfarsghab	L	L	M	Kfaryachit	M	L	M
Kfarzaina	M	L	M	Khaldiye	M	L	M	Mazraat Ajbeaa	M	L	M
Mazraat Et-Teffah	L	L	M	Mazraat Jneid	M	L	M	Mejdlaiya Zgharta	M	L	M
Merh Kfarsghab	M	L	M	Miryata	M	L	M	Miziara	L	L	M
Mzraat Kefraya	M	L	M	Qorah Bach	M	L	M	Rachiine	M	L	M
Ras Kifa	L	L	M	Sakhra	M	L	M	Sebhel Zgharta	L	L	M
Serhel	VL	L	L	Tallet Zgharta	M	L	M	Toula Zgharta	L	L	M
Zgharta	M	L	M								

Minieh-Denniye

Municipality	30-Jan	31-Jan	01-Feb	Municipality	30-Jan	31-Jan	01-Feb	Municipality	30-Jan	31-Jan	01-Feb
Aasaymout	L	L	ML	Aaymar	L	L	M	Aazki	M	L	M
Ain El-Tineh-Miniyeh	L	L	M	Assoun	L	L	M	Bakhaaoun	ML	L	M
Bchennata	L	L	M	Bechehhara	L	L	L	Beddawi	M	L	M
Behouaita	L	L	M	Beit El Foqss	L	L	M	Beit Haouik	ML	L	M
Beit Zoud	L	L	M	Bekaasafrine	L	L	M	Borj El Yahoudiyeh	M	L	M
Bqarsouna	VL	L	M	Btermaz	L	L	ML	Debaael	L	L	M
Deir Ammar	M	L	M	Deir Nbouh	ML	L	M	Haouaret-Miniyeh	L	L	M
Haql el Azimeh	L	L	ML	Harf El Siyad	L	L	L	Hazmiye-Miniyeh	VL	VL	M
Izal	ML	ML	M	Jarjour	L	VL	L	Jayroun	L	L	M
Kahf El-Malloul	L	L	ML	Karm El-Moher	L	ML	M	Kfar Binine	L	L	M
Kfarchalane	ML	L	M	Kfarhabou	M	L	M	Kharroub-Miniyeh	M	L	M
Mazraat El-Kreme	L	L	M	Mazraat Ketrane	L	L	M	Merkebta	M	L	M
Minyeh	M	VL	M	Mrah El Sfirat	L	L	M	Mrah Sraj	L	L	ML
Mrebbine	L	L	M	Nabi Youcheaa	M	L	M	Nemrine	VL	L	M

Qarhaiya	L	L	M	Qarne	L	L	M	Qarsita	VL	L	M
Qattineh-Miniyeh	L	L	ML	Qemmamine	VL	VL	M	Qraine	L	L	ML
Raouda-Aadoua	M	L	M	Rihaniyet-Miniyeh	M	VL	M	Sfireh	L	L	M
Sir Ed-Danniyeh	L	L	M	Tarane	L	L	ML	Terbol-Miniyeh	M	L	M
Zaghartaghriine	L	L	M	Zouq Bhannine	M	VL	M				

Nabatiye

Nabatiye

Municipality	30-Jan	31-Jan	01-Feb	Municipality	30-Jan	31-Jan	01-Feb	Municipality	30-Jan	31-Jan	01-Feb
Aabba	M	M	M	Aazzi	M	M	M	Adchit El-Chqif	M	M	M
Ain Bou Swar	ML	L	M	Ain Kana	M	ML	M	Ali El-TaHER	M	M	M
Ansar	M	M	M	Arab Salim	M	M	M	Arnoun	M	M	M
Bfaroue	M	M	M	Breyqaah	M	M	M	Charqiyeh	M	M	M
Choukine	M	ML	M	Deir El Zahrani	M	M	M	Doueir El-Nabatiyeh	M	M	M
Habbouch El-Nabatiye	M	M	M	Hamra El-Nabatiyeh	ML	ML	M	Harouf El-Nabatiyeh	M	M	M
Hmaile	M	M	M	Houmin El Faouqa	M	M	M	Houmin El Tahta	M	M	M
Jarjough	M	M	M	Jbaah El-Nabatiyeh	M	L	M	Jebchit	M	M	M
Kfar Djal El-Nabatiy	M	M	M	Kfar Remmane	M	M	M	Kfar Sir	M	M	M
Kfar Tebnit	M	M	M	Kfarfila	M	M	M	Kfour El-Nabatieh	M	M	M
Mayfadoun	M	ML	M	Mazraat Bsaffour	M	M	M	Mazraat Chalbaal	M	M	M
Mazraat Dmoul	M	M	M	Mazraat El Khreibeh	M	M	M	Mazraat El-Bayad El-	M	M	M
Mazraat Kfarjaouz	M	M	M	Mazraat Qalaat Meiss	M	M	M	Nabatiyeh El-Fawka	M	ML	M
Nabatiyeh Et-Tahta	M	ML	M	Namiriyeh	M	M	M	Qaaqaiyet El Jisr	M	M	M
Qossaibeh El-Nabatiy	M	M	M	Roumine	M	M	M	Sarba El-Nabatieh	M	M	M
Sir El-Gharbiyeh	M	M	M	Toul	M	M	M	Yehmor El-Nabatiyeh	M	ML	M
Zaoutar El Charqiyeh	M	ML	M	Zaoutar El-Gharbiyeh	M	ML	M	Zebdine El-Nabatiyeh	M	ML	M
Zefta	M	M	M								

Hasbaiya

Municipality	30-Jan	31-Jan	01-Feb	Municipality	30-Jan	31-Jan	01-Feb	Municipality	30-Jan	31-Jan	01-Feb
Aain Jarfa	M	ML	M	Abou Qamha	M	M	M	Ain Qania	M	ML	M
Bourghos	ML	ML	M	Chebaa	L	L	M	Chouaya Hasbaya	L	L	M
Dellafeh	ML	ML	M	Fardiss Hasbaiya	M	M	M	Hasbaya	M	ML	M
Hbariyeh	M	ML	M	Kaoukaba Hasbaiya	M	M	M	Kfar Chouba	M	M	M
Kfar Hamam	M	M	M	Kfeir El-Zait	ML	ML	M	Khalwat Hasbaya	ML	L	M
Khreibet Hasbaiya	M	M	M	Majidiyeh Hasbaiya	M	M	M	Marj Ez-Zhour (Haouc	ML	L	M
Meri	M	M	M	Mimass	ML	ML	M	Rachaiya El-Fokhar	M	M	M
Salaiyeb	M	ML	M								

Marjayoun

Municipality	30-Jan	31-Jan	01-Feb	Municipality	30-Jan	31-Jan	01-Feb	Municipality	30-Jan	31-Jan	01-Feb
Aalmane Marjaayoun	M	ML	M	Aamra	M	ML	M	Adayseh Marjaayoun	ML	ML	M
Adchit El-Koussair	ML	ML	M	Ain Aarab Marjaayoun	M	ML	M	Bani Haiyann	ML	ML	M
Blatt Marjaayoun	M	M	M	Blida	ML	ML	M	Borj El-Moulouk	M	ML	M
Boueyda Marjaayoun	M	M	M	Deir Mimass	M	M	M	Deir Siriane	M	ML	M
Dibbine	M	M	M	Ebel El Saqi	M	M	M	Houla	ML	ML	M
Houra	M	ML	M	Kfar Kila	M	ML	M	Khiam Marjaayoun	M	M	M

Klayaa	M	M	M	Majdel Selem	ML	L	M	Marjaayoun	M	M	M
Markaba	ML	ML	M	Mays El-Jabal	ML	ML	M	Mazraat Doumiat	M	M	M
Mazraat Sarada	M	ML	M	Mhaibib	ML	ML	M	Qabriqha	ML	ML	M
Qantara	ML	ML	M	Rab El-Thalathine	ML	ML	M	Saouaneh Marjayoun	ML	ML	M
Talloussa	ML	ML	M	Taybeh Matjaayoun	M	ML	M	Touline	ML	ML	M

Bent Jbail

Municipality	30-Jan	31-Jan	01-Feb	Municipality	30-Jan	31-Jan	01-Feb	Municipality	30-Jan	31-Jan	01-Feb
Ain-Ebel	L	L	M	Aitaroun	L	ML	M	Aynata Bint Jbeil	L	ML	M
Ayta El-Chaeb	M	M	M	Ayta El-Jabal	M	ML	M	Beit Lif	M	M	M
Beit Yahoun	ML	ML	M	Bint Jbeil	L	L	M	Borj Qalaway	M	M	M
Braachit	ML	L	M	Chakra	L	L	M	Debel	ML	L	M
Deir Antar	M	M	M	Froun	M	M	M	Ghandouriyeh Bint Jb	M	M	M
Hanine	L	L	M	Hariss	M	ML	M	Hdatha	ML	ML	M
Jmeyjme	ML	L	M	Kafra Bint Jbeil	M	M	M	Kfar Dounine	M	M	M
Khirbet Selm	M	M	M	Kounine	L	L	M	Maroun El Ras	L	ML	M
Qalaway	M	M	M	Qaouzah	M	M	M	Qatmoun	L	L	M
Ramya Bint Jbeil	M	M	M	Rchaf	M	ML	M	Rmeich	ML	L	M
Safad Al Battikh	ML	ML	M	Salhaneh	M	M	M	Serbine	M	M	M
Sultanieh Bint Jbeil	M	ML	M	Tibnine	M	ML	M	Tiri	L	L	M
Yaroun	L	L	M	Yater	M	M	M				

Mont Liban

Jbail

Municipality	30-Jan	31-Jan	01-Feb	Municipality	30-Jan	31-Jan	01-Feb	Municipality	30-Jan	31-Jan	01-Feb
Aabeydat	L	L	M	Aalita	L	L	ML	Aamchit	ML	L	M
Aarab El-Lahib	VL	VL	M	Aarasta	VL	VL	ML	Adonis Jbeil	VL	VL	M
Afqa Jbeil	VL	VL	L	Ain El Delbeh Jbeil	VL	L	ML	Ain El-Ghouayba	VL	VL	ML
Ain Jrain	VL	L	ML	Ain Kfah	L	L	M	Almat El Chemaliyat	VL	L	M
Almat El-Jenoubiya	VL	L	M	Aqoura	VL	L	M	Bayzoun	VL	L	M
Bchille Jbeil	L	L	M	Bechtlida	VL	VL	L	Behdaydat	L	L	M
Beit Habbaq	L	L	M	Bejjeh	L	L	M	Bekhaaz	L	L	M
Berbara Jbeil	ML	L	M	Bintael	L	L	M	Birket Hjoula	VL	L	ML
Blatt Jbeil	L	L	M	Boulhos	VL	L	M	Breyj Jbeil	L	L	ML
Chamat	L	L	M	Chikhane	L	L	M	Chmout	L	L	ML
Eddeh Jbeil	L	L	M	Ehmej	VL	L	M	Fatre	L	L	ML
Ferhet	L	L	M	Fghal	L	L	ML	Frat	VL	L	ML
Ghabat	VL	VL	M	Ghalboun	L	L	M	Gharzouz	L	L	M
Ghofrine	L	L	M	Habil	VL	L	M	Halate	L	L	M
Haqel	L	L	M	Hbaline	L	L	M	Hboub	L	L	M
Hdeine	VL	L	M	Hema Er-Rehban	VL	L	M	Hema Mar Maroun Aann	VL	VL	M
Hjoula	VL	L	M	Hosrayel	L	L	M	Hsarat	L	L	M
Hsoun	L	L	M	Jaj	VL	L	ML	Janne	VL	VL	ML
Jbeil	L	L	M	Jeddeyl Jbeil	L	L	M	Jlisse	L	L	ML
Jouret El-Qattine	L	L	M	Kfar Baal Annaya	VL	L	M	Kfar Kidde	L	L	M
Kfar Kouas	L	L	M	Kfar Mashoun	L	L	M	Kfoun	L	L	ML

Kharbe Jbeil	L	L	M	Laqlouq	VL	L	M	Lassa	VL	VL	ML
Lehfed	VL	L	L	Maad	L	L	M	Mar Sarkis	VL	L	M
Mastita	L	L	M	Mayfouq	L	L	L	Mazraat El Siyad	VL	L	M
Mazraat El-Maaden	VL	L	ML	Mechane	VL	L	M	Mechmech Jbeil	VL	L	ML
Mehrin	L	L	M	Mejdel El-Akoura	VL	VL	ML	Mghayreh Jbeil	VL	L	M
Mounsef	L	L	M	Nahr Ibrahim	ML	L	M	Qahmez	VL	VL	ML
Qartaba	VL	L	M	Qartaboun	ML	L	M	Qattara Jbeil	VL	L	L
Qorqraya	VL	VL	L	Ramout	L	L	M	Ras Osta	L	L	M
Rihane Jbeil	L	L	M	Sakiet El-Khayt	L	L	ML	Saqi Richmaya	VL	L	ML
Sebrine	L	L	ML	Seraita	VL	L	ML	Souane Jbeil	VL	L	M
Tadmor	VL	L	M	Tartej	VL	L	ML	Torzaiya	VL	L	M
Yanouh Jbeil	VL	VL	M	Zibidine Jbeil	L	L	M				

El Metn

Municipality	30-Jan	31-Jan	01-Feb	Municipality	30-Jan	31-Jan	01-Feb	Municipality	30-Jan	31-Jan	01-Feb
Aain El-Qabu	VL	VL	ML	Aain El-Qach	L	L	M	Aain El-Teffaha	L	L	M
Aain el-Safssaf El-M	L	L	M	Abou Mizane	L	L	M	Ain Aar	M	L	M
Ain Alaq	L	L	M	Ain El-Kharroube	L	L	M	Ain El-Sendianeh	L	L	M
Ain El-Zeitoune	VL	VL	M	Ain Saadeh	M	L	M	Aintoura El-Matn	VL	L	M
Amaret Chalhoub	M	L	M	Antelias	M	L	M	Atchaneh	L	VL	M
Ayroun	L	L	M	Baabdat	L	L	M	Baouchariyeh	M	ML	M
Baskinta	VL	VL	ML	Beit Chabab	L	L	M	Beit El-Chaar	M	L	M
Beit El-Kekko	M	L	M	Beit Mery	M	L	M	Bhersaf	L	L	M
Bikfaya	L	L	M	Biyakout	M	L	M	Bnabil	VL	VL	M
Bourj Hammoud	M	ML	M	Bqennaya	M	L	M	Broummana El-Matn	M	L	M
Bsalim	M	L	M	Bsifrine	L	L	M	Bteghrine	VL	VL	M
Chaouiye	L	L	M	Chouaya El-Matn	L	L	M	Choueir	L	L	M
Chrine	L	VL	M	Dahr El Sawan El-Mat	L	L	M	Daychouniyeh	M	L	M
Dbayeh	M	L	M	Deir Chamra	L	VL	ML	Deir Mar Abda el Mch	L	VL	M
Deir Mar Roukouz	M	ML	M	Deir Tamiche	ML	L	M	Dik El-Mehdi	ML	L	M
Dikwaneh	M	ML	M	Douar El-Matn	L	L	M	Fanar	M	L	M
Fraike	L	L	M	Haret El-Ballaneh	M	L	M	Hbous	M	L	M
Himlaya	L	L	M	Jal El Did	M	L	M	Jdeideh El-Metn	M	ML	M
Jouar El-Matn	L	VL	M	Jouret El-Ballout	ML	L	M	Kaaqour	L	L	M
Kfar Aaqab	VL	VL	M	Kfertay El-Matn	VL	VL	M	Khenchara	L	VL	M
Khillat El-Mtain	L	L	M	Konnabat Broummana	M	L	M	Konnabat Salima	L	L	M
Machraah El-Matn	VL	VL	M	Majdel Tarchich	L	L	M	Majzoub	M	L	M
Mansouriyeh El-Metn	M	L	M	Mar Boutros Karm Et-	L	L	M	Mar Chaya et Mzekke	ML	L	M
Mar Moussa Ed-Douar	L	L	M	Marjaba	VL	VL	ML	Masqa	ML	L	M
Mayasse	L	L	M	Mazraat Deir Aoukar	M	L	M	Mazraat El-Hadirat	M	L	M
Mazraat Yachouh	M	L	M	Mchikha	VL	L	M	Menqlet Mezher	M	L	M
Mhaydseh Matn	L	L	M	Mkalles	M	ML	M	Mrouj	VL	VL	M
Mtain	VL	L	M	Mtayleb	M	L	M	Nabay	ML	VL	M
Naccache	M	L	M	Ouadi Chahine	L	VL	M	Ouadi El-Karm El-Mat	VL	VL	M
Ouata El-Mrouj	VL	VL	M	Ouyoun El-Matn	L	L	M	Qornet Chehwan	ML	L	M
Qornet El-Hamra	L	VL	M	Roumieh	M	L	M	Sfeilet Bikfaya	L	L	M
Sinn El-Fil	M	ML	M	Zabbougha	VL	VL	M	Zalqa	M	L	M

Zarououn	L	L	M	Zekrite	L	VL	M	Zighrine El-Matn	L	L	M
Zouk El-Khrab	M	L	M								

Chouf

Municipality	30-Jan	31-Jan	01-Feb	Municipality	30-Jan	31-Jan	01-Feb	Municipality	30-Jan	31-Jan	01-Feb
Aalmane El-Chouf	M	M	M	Aammiq El-Chouf	L	L	M	Ain Ouzein	L	L	M
Ain Qani	L	L	M	Ain Zhalta	L	L	M	Ainbal	M	ML	M
Amatour	L	L	M	Anout	M	ML	M	Atrine	M	ML	M
Baadarane	L	L	M	Baaqline	M	ML	M	Baasir	M	ML	M
Barja	M	M	M	Barouk	L	L	M	Bater	L	L	M
Batloun	L	L	M	Bayqoun	ML	L	M	Bchetfine	M	L	M
Beiteddine	ML	L	M	Benouati Ech-Chouf	M	ML	M	Berjein	M	L	M
Bireh et Mtalleh	L	L	M	Biret El-Chouf	L	L	M	Bkechtine Ouel Mchei	M	L	M
Bkifa El-Chouf	M	ML	M	Botme	L	L	M	Bqaiaa Ech-Chouf	M	L	M
Bsaba El-Chouf	M	ML	M	Chammis El-Chouf	M	ML	M	Chehim	M	ML	M
Chemaarine	M	L	M	Chourit	L	L	M	Daher El-Chouf	M	L	M
Dalhoun	M	ML	M	Damour	M	L	M	Daraya El-Chouf	M	L	M
Deir El-Moukhalles	M	L	M	Deir Baba	M	ML	M	Deir Dourit	M	L	M
Deir El-Qamar	M	ML	M	Deir Kouche	M	L	M	Dibbieh	M	L	M
Dmit	M	L	M	Fouara Jaafar	L	L	M	Fraidis El-Chouf	L	L	M
Ghabet Jaafar	M	ML	M	Gharife	M	ML	M	Haret Jandal	L	L	M
Hasrout	M	ML	M	Jadra	M	M	M	Jahlieh	M	ML	M
Jbeih El-Chouf	L	L	M	Jdeidet El-Chouf	L	L	M	Jiyeh	M	M	M
Jleilyeh	M	ML	M	Jmailiyeh	M	ML	M	Joun	M	ML	M
Kahlounie El-Chouf	L	L	M	Ketermaya	M	M	M	Kfar Faqoud	M	ML	M
Kfar Hamal	M	ML	M	Kfar Him	M	ML	M	Kfar Katra	L	L	M
Kfar Niss	L	L	M	Kfar hay	L	L	M	Kfarnabrakh	L	L	M
Khirbet Bisri	M	L	M	Knayse El-Chouf	M	L	M	Maaniyeh	M	ML	M
Maasser Beiteddine	L	L	M	Maasser El-Chouf	L	L	M	Majdalouna	M	ML	M
Majdel El-Meouch	L	L	M	Mazboud	M	ML	M	Mazmoura	M	ML	M
Mazraat El Chouf	ML	L	M	Mazraat El Daher	M	ML	M	Mazraat El-Douair	L	L	M
Mechref	M	L	M	Mghairie	M	M	M	Mghayrie El-Chouf	M	L	M
Moukhtara	L	L	M	Mrusti	L	L	M	Mtolle	M	ML	M
Naameh	M	L	M	Niha El-Chouf	L	L	M	Ouadi Abou Youssef	M	L	ML
Ouadi Ed-Deir	M	ML	M	Ouadi El-Sit	L	L	M	Ouadi bnehlay	M	L	M
Qraibeh	L	L	M	Qreiaa	M	L	M	Rmayle El-Chouf	M	M	M
Semqaniyeh	L	L	M	Sibline	M	M	M	Sirjbeil	M	L	M
Warhanieh	L	L	M	Werdaniyeh	M	M	M	Zaarourieh	M	ML	M

Baabda

Municipality	30-Jan	31-Jan	01-Feb	Municipality	30-Jan	31-Jan	01-Feb	Municipality	30-Jan	31-Jan	01-Feb
Abadiyeh	M	L	M	Ain Mouaffaq	L	M	M	Araiya	M	ML	M
Arbaniyeh	L	L	M	Arsoun	L	L	M	Baabda	M	L	M
Baalchmey	ML	M	M	Bmaryam	VL	L	M	Bourj El-Brajneh	M	ML	M
Boutchay	M	ML	M	Bsaba Baabda	M	ML	M	Btekhney	L	L	M
Btibyat	L	L	M	Bzbeddine	VL	L	M	Chbeniyeh	VL	L	M
Chiyah	M	M	M	Chmeisset Baabda	L	L	M	Chouit	M	ML	M
Deir El-harf	L	L	M	Deir Khouna	L	L	M	Dlaybeh	L	L	M

Falougha	L	L	M	Furn El-Chebbak	M	ML	M	Hadath Beyrouth	M	ML	M
Halaliyeh Baabda	L	ML	M	Hammana	L	L	M	Haret El Sett	M	L	M
Haret Hamze	L	L	M	Haret Hreik	M	ML	M	Hasbaiya El-Metn	L	L	M
Jouar El-Hoz	VL	VL	ML	Jouret Arsoun	L	L	M	Kfar Chima	M	ML	M
Kfar Selouane	VL	L	ML	Khalouat Baabda	L	L	M	Kneisset Baabda	L	L	M
Laylakeh	M	ML	M	Louayzeh Baabda	M	L	M	Merdache	M	ML	M
Mzairaa Baabda	L	ML	M	Ouadi Chahrour El Ol	M	L	M	Ouadi Chahrour El So	M	L	M
Qalaa Baabda	L	L	M	Qhraybe Baabda	VL	L	M	Qobbayaa	VL	L	M
Qornayel	L	L	M	Qortada	L	L	M	Qrayeh Baabda	VL	L	M
Qsaibeh Baabda	ML	L	M	Qtale Baabda	VL	L	M	Ras El Metn	L	L	M
Ras El-Haref	VL	L	M	Rouayset El-Ballout	L	ML	M	Salima Baabda	L	L	M
Tahouitat El Ghadir	M	L	M	Tarchich	L	L	M	Zandouqa	L	L	M

Aley

Municipality	30-Jan	31-Jan	01-Feb	Municipality	30-Jan	31-Jan	01-Feb	Municipality	30-Jan	31-Jan	01-Feb
Abey	M	L	M	Aghmid	L	L	M	Ain Dara	L	L	M
Ain Drafil	M	L	M	Ain El Halazoun	L	L	M	Ain El-Rmmaneh	L	ML	M
Ain Jedideh	M	M	M	Ain Ksour	M	L	M	Ain Onoub	M	L	M
Ain Traz	ML	L	M	Ainab	M	L	M	Aley	M	M	M
Aramoun	M	L	M	Aytat	M	ML	M	Azouniyeh	VL	L	M
Baawerta	M	L	M	Badghan Oua Wadi Bad	L	L	M	Bassatine	M	L	M
Bayssour	M	L	M	Bchamoun	M	L	M	Bdadoun	M	L	M
Behouara	ML	ML	M	Bennay	M	L	M	Bhamdoun El-Dayaa	M	ML	M
Bhamdoun El-Mhatta	L	L	M	Bkhechtey	M	M	M	Bleibel	M	L	M
Bmakine	M	ML	M	Bmehray	L	L	M	Bouzrid	M	L	M
Bserrine	L	L	M	Bsous	ML	L	M	Btalloun	M	M	M
Btater	L	L	M	Chanay	L	L	M	Charoun	L	L	M
Chartoun	ML	L	M	Chemlane	M	L	M	Choueifat El-Aamrous	M	ML	M
Choueifat El-Oumara	M	L	M	Choueifat El-Quoubbe	M	L	M	Dakkoun	M	L	M
Deir Qoubel	M	L	M	Dfoun	M	L	M	Douair El Remmaneh	M	L	M
Ghaboun	M	M	M	Habramoun	L	L	M	Homs Oua Hama	L	L	M
Houmal	M	L	M	Jisr El Qadi	M	L	M	Kehaleh	ML	ML	M
Keyfoun	M	ML	M	Kfar Aamey	ML	L	M	Kommatyeh	M	ML	M
Maasrati	L	L	M	Majdel Baana	L	L	M	Mansourieh et Ain El	M	ML	M
Mazraat El-Nahr	L	L	M	Mchakhte	L	L	M	Mecherfeh	L	L	M
Mejdlaya	M	L	M	Mrayjat	L	L	M	Ramliyah	L	L	M
Rechmaya	L	L	M	Rejmeh	ML	ML	M	Remhala	M	L	M
Rouaysset El Neemane	L	L	M	Saoufar	VL	L	M	Selfaya	M	L	M
Sirhmoul	M	L	M	Souq El Ghareb	M	ML	M	Taazanieh	M	M	M

Kesrouane

Municipality	30-Jan	31-Jan	01-Feb	Municipality	30-Jan	31-Jan	01-Feb	Municipality	30-Jan	31-Jan	01-Feb
Achkout	L	L	M	Adma Oua Dafneh	ML	L	M	Ain Ed-Delbe Kesroua	VL	VL	L
Ain El-Rihane	L	L	M	Aintoura Kesrouane	ML	L	M	Ajaltoun	L	L	M
Akaybeh Kesrouane	ML	L	M	Aramoun Kesrouane	ML	L	M	Azra ouel Ozor	L	L	M
Ballouneh	L	L	M	Batha	L	L	M	Bekaatat Achkout	L	L	M
Bekaatat Kanaan	VL	VL	ML	Bizhel	L	VL	M	Bouar	ML	L	M
Bqaatouta	VL	L	M	Bqaq Ed-Dine	ML	L	M	Bzommar	L	L	M

Chahtoul	L	L	M	Chnaniir	M	L	M	Chouan	VL	L	ML
Daraya Kesrouane	L	L	M	Darououn	L	L	M	Deir Baqlouch	L	L	M
Dlebta	M	L	M	Eghbeh	L	L	M	Faraya	VL	VL	M
Fatka	L	L	M	Feytroun	VL	VL	M	Ghazir	M	L	M
Ghbaleh Kesrouane	L	L	M	Ghedrass	L	L	M	Ghosta	L	L	M
Ghynéh	L	L	M	Harharaya w Kattine	L	L	M	Harissa Kesrouane	L	L	M
Hayata	L	L	M	Hosein	L	VL	ML	Hrajel	VL	L	M
Jdeideh Ghazir	M	L	M	Jeita	L	L	M	Jounieh Ghadir	ML	L	M
Jounieh Haret Sakhr	M	L	M	Jounieh Salel Alma	M	L	M	Jounieh Sarba	M	L	M
Jouret Bedrane	L	L	M	Jouret Mhad	VL	L	M	Jouret Termos	L	L	M
Kfar Debiane	VL	VL	M	Kfar Tay Kesrouane	VL	VL	M	Kfar Yassine	M	L	M
Kfour Kesrouane	L	L	M	Kharayeb Nahr Ibrahi	L	L	M	Klayaat Kesrouane	L	L	M
Maarab	ML	L	M	Maaysra Kesrouane	L	L	M	Mayrouba	VL	L	M
Mazraat Er-Ras	ML	L	M	Mazraat Mrah El-Mir	L	L	M	Mchaa El Ftouh	VL	VL	M
Mchaa Faraya	VL	VL	M	Mchaa Kfar Dibiane	VL	VL	M	Mghaer	VL	VL	L
Mradiyah	L	VL	M	Nahr Ed-Dahab	VL	VL	L	Nammoura Kesrouane	L	L	M
Ouata El Jaouz	VL	VL	M	Ouata Sillam	M	L	M	Raachine	L	L	M
Rayfoun	L	L	M	Safra Kesrouane	ML	L	M	Shayle Kesrouane	L	L	M
Tabarja	ML	L	M	Yahchouch	VL	VL	M	Zaaytreh	L	L	M
Zeytoun	L	L	M	Zouk Mikael	M	L	M	Zouk Mosbeh	M	L	M

Baalbek_Hermel

Baalbek

Municipality	30-Jan	31-Jan	01-Feb	Municipality	30-Jan	31-Jan	01-Feb	Municipality	30-Jan	31-Jan	01-Feb
Aadous	ML	ML	M	Aamchki	L	L	M	Aarsal	M	ML	M
Ain Baalbek	M	M	M	Ain Bourday	M	ML	M	Ain El-Benye	L	L	M
Ain El-Jaouz Baalbek	L	L	M	Ain El-Siya Chadoura	L	L	M	Al Khodr Baalbek	M	M	M
Al Nabi Chit	M	M	M	Aynata Baalbek	L	L	M	Baalbek	M	ML	M
Bachwat	L	L	M	Barqa	VL	L	M	Bednayel Baalbak	L	L	M
Beit Chama	L	ML	M	Bijjaje	M	M	M	Bouday	L	L	M
Brital	ML	ML	M	Btadi	L	L	M	Chaat	ML	ML	M
Chaibe	L	L	M	Chlifa	L	ML	M	Chmestar	L	L	M
Dar El-Oussa	L	L	M	Deir El-Ahmar	L	L	M	Deir Mar Maroun Baal	M	M	M
Douris	M	ML	M	Fakiha	M	M	M	Hadath Baalbek	L	L	M
Ham	L	L	M	Haour Taala	M	ML	M	Hizzine	ML	ML	M
Hlebta	L	L	M	Hosh Barada	ML	ML	M	Hosh El Dahab	ML	ML	M
Hosh El Snid	ML	ML	M	Hosh El-Nabi	ML	ML	M	Hosh El-Rafiq	ML	ML	M
Hosh Tal Safiya	M	ML	M	Hrebta	L	L	M	laat	ML	ML	M
Jebaa	L	L	M	Jenta	ML	ML	M	Kfar Dabach	ML	ML	M
Kfar Dane	ML	ML	M	Khraibeh El-Hermel	M	M	M	Khreibet Baalbek	M	ML	M
Kneisset Baalbek	ML	ML	M	Labueh	M	M	M	Maarboun	L	L	M
Majdaloun	M	ML	M	Maqneh	M	ML	M	Mazraat Beit Mcheik	VL	VL	M
Misraya	ML	ML	M	Mograq	M	ML	M	Nabha El-Damdoum	L	L	M
Nabi Chbay	L	L	M	Nabi Osman	M	M	M	Nahleh baalbek	L	L	M
Ouadi El-Oss	L	L	M	Qaa Baayoun	M	M	M	Qaa Jouar Maqiye	M	M	M
Qaa Ouadi El-Khanzir	M	M	M	Qah Baalbek	M	M	M	Qarha Baalbek	L	L	M

Qsarnaba	ML	ML	M	Ram Baalbek	L	L	M	Ras Baalbek El Sahl	M	M	M
Ras Baalbek El-Charq	M	M	M	Riha	L	L	M	Saaide	ML	ML	M
Sboubba	M	M	M	Seriine El-Tahta	ML	ML	M	Slouqi	L	L	M
Taiba Baalbek	M	ML	M	Talia	ML	ML	M	Taraiya	L	L	M
Temnin El Fawqa	L	ML	M	Temnin El-Tahta	ML	ML	M	Tfail	L	L	M
Yahfoufa	M	ML	M	Yammouneh	L	L	M	Younine	M	ML	M
Zboud	M	M	M								

Hermel

Municipality	30-Jan	31-Jan	01-Feb	Municipality	30-Jan	31-Jan	01-Feb	Municipality	30-Jan	31-Jan	01-Feb
Charbine El-Hermel	L	L	M	Hermel Jbab	L	L	M	Hermel	M	ML	M
Maaysra El-Hermel	M	M	M	Michaa Mrajhine	L	L	M	Ouadi Faara	L	L	M
Ras Baalbek - Ouadi	M	M	M	Ras Baalbek El Gharb	L	L	M	Zighrine	L	ML	M

Akkar

Akkar

Municipality	30-Jan	31-Jan	01-Feb	Municipality	30-Jan	31-Jan	01-Feb	Municipality	30-Jan	31-Jan	01-Feb
Aain Tinta	ML	VL	M	Aaiyat	L	VL	M	Aakkar El-Aatiqa	L	VL	ML
Aamar Akkar	M	VL	M	Aamar El Baykat	ML	VL	M	Aamayer	ML	VL	M
Aamriyet Akkar	ML	VL	M	Aandqet	L	VL	ML	Aarmeh	L	VL	M
Aarqa	M	VL	M	Aawaynat	ML	VL	M	Aayoun Akkar	M	VL	M
Abboudiye	ML	VL	M	Ain El-Zeit	ML	VL	M	Ain Yaaqoub	L	VL	M
Akroum	L	VL	ML	Aridet Cheikh Zennad	ML	VL	M	Baldeh w Mazraat Bal	M	VL	M
Barcha	ML	VL	M	Bardeh	ML	VL	M	Bebnine	M	VL	M
Beino	ML	VL	M	Beit Ayoub	M	ML	M	Beit El-Haouch	M	L	M
Beit Mellat	M	VL	M	Beit Younes	ML	L	M	Berbara Akkar	ML	VL	M
Berqayel	M	L	M	Bezbina	L	L	ML	Bireh Akkar	ML	VL	M
Borj	ML	VL	M	Bqerezla	M	L	M	Bzal	ML	L	M
Chane	L	L	ML	Chaqdouf	L	VL	M	Charbila	M	VL	M
Cheikh Mohammad	M	VL	M	Cheikh Taba Es-Sahl	M	VL	M	Cheikh Taba	M	VL	M
Cheikh Zennad	ML	VL	M	Cheikhlar	ML	VL	M	Chir Hmairine	ML	VL	M
Daghle	ML	VL	M	Dahr Laissine	M	VL	M	Darine	ML	VL	M
Dawra	L	VL	ML	Dawsa w Baghdadi	ML	VL	M	Dayret Nahr El-Kabir	L	VL	M
Deir Dalloum	M	VL	M	Deir Jennine	M	VL	M	Denbou	ML	L	M
Dibbabiyyeh	ML	VL	M	Douair Aadwiyeh	M	VL	M	Fassikine	ML	VL	M
Fnaydek	L	L	M	Fraydes Akkar	ML	VL	M	Ghazayle	ML	VL	M
Habchit	L	L	ML	Hakour	M	VL	M	Halba	M	VL	M
Haouchab	ML	VL	M	Hayssat	ML	VL	M	Haytla	ML	VL	M
Hayzouq	M	VL	M	Hedd	M	VL	M	Hmaira Akkar	M	L	M
Hmaiss Akkar	M	VL	M	Hnaider	M	VL	M	Hokr Ed-Dahri	ML	VL	M
Hokr Etti	M	VL	M	Hokr Jouret Srar	ML	VL	M	Houaich	ML	L	M
Hrar	L	L	M	Idbil	M	VL	M	Ilal	M	L	M
Janine	ML	VL	M	Jdeidet El-Joumeh	M	VL	M	Jdeidet El-Kaiteh	M	L	M
Jebayel	M	L	M	Kafr	L	L	M	Kafr	ML	VL	M
Karm Asfour	M	L	M	Kfar Melki Akkar	M	VL	M	Kfar Noun	L	VL	M
Kfarharra	M	VL	M	Khalsa	ML	VL	M	Kharnoubet Akkar	ML	VL	M

Khirbet Daoud Aakkar	ML	VL	M	Khirbet El Remmane	ML	VL	M	Khirbet Shar	ML	VL	M
Khoreybet El-Jindi	M	VL	M	Khreibet Aakkar	ML	L	M	Kneisset Aakkar	ML	VL	M
Kneisset Hnaider	M	VL	M	Knisse	M	VL	M	Kroum El-Aarab	M	VL	M
Kwachra	ML	VL	M	Kweykhat	M	VL	M	Machta Hammoud	ML	VL	M
Majdala	M	L	M	Majdel Akkar	ML	VL	M	Mar Touma	M	VL	M
Marlaya Melhem	M	VL	M	Mashha	M	VL	M	Massoudiye	ML	VL	M
Mazraat Beit Ghattas	M	L	M	Mazraat En-Nahriye	ML	VL	M	Mechmech	L	L	M
Memneh	L	L	L	Mhammara	M	VL	M	Mighraq Aakkar	ML	VL	M
Minyara	M	VL	M	Moqayteh	M	VL	M	Mounjez	ML	VL	M
Msalla	ML	VL	M	Mzeihmeh	ML	VL	M	Nfaiseh	M	VL	M
Noura Et-Tahta	ML	VL	M	Ouadi El-Haour	ML	VL	M	Ouadi El-Jamous	M	VL	M
Ouyoun El-Ghizlane	M	VL	M	Qaabarine	M	VL	M	Qabaait	L	L	M
Qachlaq	ML	VL	M	Qantara Aakkar	M	L	M	Qarha Aakkar	M	VL	M
Qarqaf	M	L	M	Qboula	M	VL	M	Qleiaat Aakkar	ML	VL	M
Qloud El-Baqie	M	L	M	Qobaiyat Aakkar	L	VL	ML	Qobbat Chamrat	M	VL	M
Qorayat	ML	L	M	Qornet Aakkar	ML	L	M	Qsair Aakkar	ML	VL	M
Rahbe	ML	L	M	Rihaniyet Aakkar	M	VL	M	Rmah	ML	VL	M
Rmoul	M	VL	M	Saadine	ML	VL	M	Sadaqa	ML	L	M
Saidnaya	ML	VL	M	Sammouniye	M	VL	M	Sayssouq	M	L	M
Semmaqiye	ML	VL	M	Semmaqli	M	VL	M	Sfinet El-Dreib	M	VL	M
Sfinet El-Qaitaa	ML	L	M	Sindyanet Zeidane	ML	VL	M	Souaisset Aakkar	M	VL	M
Srar	ML	VL	M	Tal Abbas El Gharby	M	VL	M	Tal Abbas El-Charqy	ML	VL	M
Tal Biret	ML	VL	M	Tal Hmayra	ML	VL	M	Tal Maayan Tal Kiri	ML	VL	M
Tal Sibel	M	VL	M	Tallet Chattaha	M	VL	M	Tikrit	ML	L	M
Tleil	ML	VL	M	Tshea	L	L	M	Zawarib	M	VL	M
Zouq El Hosniyeh	M	L	M	Zouq El-Haddara	M	L	M	Zouq El-Hbalsa	M	L	M
Zouq El-Moqachrine	M	VL	M								

Sud

Sour

Municipality	30-Jan	31-Jan	01-Feb	Municipality	30-Jan	31-Jan	01-Feb	Municipality	30-Jan	31-Jan	01-Feb
Aaiyeh	M	M	M	Aalma El-Chaab	M	M	M	Aaytit	M	M	M
Abbassiyeh Sour	M	M	M	Abou Chech	M	M	M	Ain Abou Abdallah	M	M	M
Ain Baal	M	M	M	Arzoun	M	M	M	Aziyeh	M	M	M
Baflaya	M	M	M	Barich	M	M	M	Batouliyah	M	M	M
Bayad	M	M	M	Bazouriyeh	M	M	M	Bediass	M	M	M
Bestiyat	M	M	M	Borj El Chemali	M	M	M	Borj En-Naqoura	M	M	M
Borj Rahhal	M	M	M	Boustane	M	M	M	Btaychiyah	M	M	M
Chaaitiye	M	M	M	Chameh	M	M	M	Chehabiye	M	M	M
Chehour	M	M	M	Chihine	M	M	M	Debaal Sour	M	M	M
Deir Amess	M	M	M	Deir Kifa	M	M	M	Deir Qanoun El-Ain	M	M	M
Deir Qanoun El-Naher	M	M	M	Derdghaiya	M	M	M	Dhayra	M	M	M
Halloussiyeh	M	M	M	Hamoul	M	M	M	Hanaouey	M	M	M
Henniye	M	M	M	Hmairi Sour	M	M	M	Iskandarouna Sour	M	M	M
Jbal El Botom	M	M	M	Jebbin	M	M	M	Jennata	M	M	M
Jijim	M	M	M	Jouaiya	M	M	M	Kneisset Sour	M	M	M

Maarake	M	M	M	Maaroub	M	M	M	Majadel	M	M	M
Majdalzoun	M	M	M	Mansouri Sour	M	M	M	Marnba	M	M	M
Marouahine	M	M	M	Mazraat El-Zalloutiy	M	M	M	Mazraat Mechref	M	M	M
Mazraat Tayr Semhat	M	M	M	Mheilib	M	M	M	Neffakhiyeh	M	M	M
Niha Sour	M	M	M	Ouadi Jilo	M	M	M	Qana	M	M	M
Qolaileh Sour	M	M	M	Rechknayan	M	M	M	Rmadiyah	M	M	M
Selha Sour	M	M	M	Siddiqine	M	M	M	Sour	M	M	M
Srifa	M	M	M	Tayr Debbe	M	M	M	Tayr Felsay	M	M	M
Tayr Harfa	M	M	M	Touayri	M	M	M	Toura	M	M	M
Yanouh Sour	M	M	M	Yarine	M	M	M	Zebqine	M	M	M

Saida

Municipality	30-Jan	31-Jan	01-Feb	Municipality	30-Jan	31-Jan	01-Feb	Municipality	30-Jan	31-Jan	01-Feb
Aanqoun	M	M	M	Aaqtanit	M	M	M	Aarab Ej-Jall	M	M	M
Aarab Tabbaya	M	M	M	Abra Saida	M	M	M	Adloun	M	M	M
Adousiyeh	M	M	M	Ain-El-Deleb	M	M	M	Arzai	M	M	M
Babliyah	M	M	M	Barty	M	M	M	Bissariyeh	M	M	M
Bnaafoul	M	M	M	Bqosta	M	M	M	Bramiy --	M	M	M
Daoudiyeh	M	M	M	Dareb El-Sim	M	M	M	Erkay	M	M	M
Ghassanieh	M	M	M	Ghazieh	M	M	M	Hajjeh	M	M	M
Haret Saida	M	M	M	Hartiyeh	M	M	M	Hlaliye Saida	M	M	M
Insariyat	M	M	M	Jazira Saida	M	M	M	Kafar Bit	M	M	M
Kaoutariyet El-Siyad	M	M	M	Kfar Chellal	M	M	M	Kfar Hatta Saida	M	M	M
Kfar Milke Saida	M	M	M	Khartoum	M	M	M	Khaziz	M	M	M
Khirbet Ed-Douair Sa	M	M	M	Khirbet El-Bassal	M	M	M	Khrayeb Saida	M	M	M
Loubieh	M	M	M	Maghdouche	M	M	M	Majdelyoun	M	M	M
Matariyet El-Choumar	M	M	M	Matayriyeh	M	M	M	Mazraat 'Mseileh	M	M	M
Mazraat 'Snaiber	M	M	M	Mazraat Aarab Soukka	M	M	M	Mazraat Deir Taqla	M	M	M
Mazraat El Yahoudiye	M	M	M	Mazraat El-Housseini	M	M	M	Mazraat El-Mhaydaleh	M	M	M
Mazraat El-Ouasta	M	M	M	Mazraat Jamjim	M	M	M	Mazraat Kaoutariyet	M	M	M
Mazraat Kfar Badda	M	M	M	Mazraat Oussamiyat	M	M	M	Mazraat Sari	M	M	M
Mazraat Sinai	M	M	M	Meemariyeh	M	M	M	Merouaniyeh	M	M	M
Miyeh ou Miyeh	M	M	M	Najjariyeh	M	M	M	Qaaqaiyat El-Snaouba	M	M	M
Qnarit	M	M	M	Qraiye Saida	M	M	M	Saida Ed-Dekermane	M	M	M
Saida El-Oustani	M	M	M	Saida El-Qadimeh	M	M	M	Saida Kefraya	M	ML	M
Saksakiyeh	M	M	M	Salhigh Saida	M	M	M	Sarafand	M	M	M
Sfenta	M	ML	M	Tafahta	M	M	M	Tanbourit	M	M	M
Tebna	M	M	M	Zaghdraiya	M	ML	M	Zeita	M	M	M
Zrariyeh	M	M	M								

Jezzine

Municipality	30-Jan	31-Jan	01-Feb	Municipality	30-Jan	31-Jan	01-Feb	Municipality	30-Jan	31-Jan	01-Feb
Ain El-Mir (El Estab	M	M	M	Anane	M	L	M	Aramta	ML	ML	M
Ariya	L	L	M	Aychiyeh	M	M	M	Azour	M	L	M
Baba	M	L	M	Bayssour Jezzine	M	M	M	Benoueteh Jezzine	ML	L	M
Bhannine	L	L	M	Bisri	M	L	M	Bkassine	M	L	M
Bouslaya	M	L	M	Btedine El-Leqech	M	L	M	Chbail	M	M	M
Choualiq Jezzine	M	M	M	Dahr Ed-Deir	M	ML	M	Deir El Qattine	M	L	M

Demachqiyeh	M	M	M	Ghabbatiyeh	ML	L	M	Harf Jezzine	M	L	M
Hassaniyeh	M	M	M	Haytouleh	M	ML	M	Haytura	M	L	M
Hidab	ML	L	M	Homsiyeh	M	L	M	Jabal Toura	ML	L	M
Jarmaq	M	M	M	Jensnaya	M	M	M	Jernaya	M	M	M
Jezzine	L	L	M	Karkha	M	ML	M	Kfar Falous	M	M	M
Kfar Houna	L	L	M	Kfar Jarrah	M	M	M	Lebaa	M	M	M
Louayzet Jezzine	ML	L	M	Machmouche	M	L	M	Mahmoudiyeh Jezzine	M	M	M
Maknounye Jezzine	M	L	M	Maraat Ouazaiyeh	M	M	M	Mazraat Daraya	ML	L	M
Mazraat El-Aarqoub	M	M	M	Mazraat El-Mathane	M	L	M	Mazraat El-Rahbane	ML	L	M
Mazraat Khallet Khaz	M	M	M	Mazraat Louzid (Loua	M	M	M	Mazraat Qrouh	M	M	M
Mazraat Tamra	M	M	M	Mazraat Zighrine Jez	M	M	M	Mazraat	M	M	M
Mharbiyeh	M	M	M	Midane Jezzine	M	L	M	Mjeydel Jezzine	M	M	M
Mlikh	ML	L	M	Mrah El-Hbasse	M	M	M	Ouadi Baanqoudaine	M	M	M
Ouadi El-Laymoun	M	M	M	Ouardiyeh	M	M	M	Qabaa Jezzine	M	L	M
Qatrani	M	ML	M	Qaytouleh	M	L	M	Qtaleh Jezzine	M	L	M
Rihane Jezzine	M	M	M	Rimat	M	L	M	Roum	M	L	M
Roummanet	ML	L	M	Sabbah	M	L	M	Saydoun	M	L	M
Sfaray	M	ML	M	Snaya	M	L	M	Sojoud	M	M	M
Srayri	ML	ML	M	Taaid	M	L	M	Wadi Jezzine	ML	L	M
Zhalta	M	L	M								

Bekaa

West Bekaa

Municipality	30-Jan	31-Jan	01-Feb	Municipality	30-Jan	31-Jan	01-Feb	Municipality	30-Jan	31-Jan	01-Feb
Aammiq BG	L	L	M	Ain El Tineh BG	L	L	M	Ain Zebdeh	L	L	M
Ana	L	L	M	Aytanit	L	L	M	Baaloul BG	L	L	M
Bab Mareh	L	L	M	Chouberqiye Aammiq	L	L	M	Dakoue	L	ML	M
Deir Ain El-Jaouze	L	L	M	Deir Tahniche	L	L	M	Ghaza	L	ML	M
Harime El-Soughra	L	ML	M	Hoch Harimeh	L	ML	M	Jazira BG	L	ML	M
Jib Jennine	L	L	M	Kamed-El-Laouz	L	ML	M	Kefraya BG	L	L	M
Khiara El Atika	L	ML	M	Khiara	L	ML	M	Khirbet Qanafar	L	L	M
Lala	L	L	M	Lebbaya BG	L	L	M	Loussa	L	L	M
Machghara	L	L	M	Manara (Hammara) BG	L	L	M	Mansoura BG	L	L	M
Marej BG	L	ML	M	Maydoun	L	L	M	Ouaqf BG	L	ML	M
Qaraaoun	L	L	M	Qelya	ML	ML	M	Raouda (Istabel)	ML	M	M
Saghbine	L	L	M	Sohmor	L	L	M	Soltan Yacoub el Ara	L	ML	M
Souairy	ML	ML	M	Sultan Yaacoub	L	ML	M	Tal Znouh	L	L	M
Yehmor BG	L	L	M	Zilaya	ML	ML	M				

Zahle

Municipality	30-Jan	31-Jan	01-Feb	Municipality	30-Jan	31-Jan	01-Feb	Municipality	30-Jan	31-Jan	01-Feb
Aanjar (Haouch Mouss	ML	M	M	Ablah	ML	ML	M	Ain Kfarzabad	ML	M	M
Ali-El-Nahri	ML	ML	M	Bar Elias	L	ML	M	Bouarej	L	L	M
Cheberqiyet Tabet	L	ML	M	Chtaura	L	ML	M	Deir El Ghazal	M	M	M
Delhamiyet Zahle	ML	ML	M	Ferzol	ML	ML	M	Haouch El-Ghanam	ML	ML	M
Haouch Es-Siyadeh	L	ML	M	Haouch Hala	ML	ML	M	Haouch Mandara	L	ML	M

Haouch Qayssar	L	ML	M	Hezerta	L	L	M	Hosh Moussa	ML	ML	M
Jdita	L	ML	M	Kfarzabad	ML	M	M	Ksara	L	ML	M
Majdel Aanjar	L	ML	M	Makssi	L	ML	M	Massa	ML	M	M
Mazraat Er-Remtaniye	L	L	M	Mrayjat Zahle	L	L	M	Mzaraa Zahle	L	L	M
Nabi Ayla	ML	ML	M	Nasriyet Rizk	ML	ML	M	Nasriyet Zahle	L	ML	M
Niha Zahle	L	L	M	Ouadi Ed-Deloum	L	L	M	Ouadi El-Arayech	L	ML	M
Qaa El Rim	L	L	M	Qab Elias	L	ML	M	Qousaya	ML	M	M
Rhit	ML	ML	M	Riyak	ML	ML	M	Saadnayel	L	ML	M
Taal El-Akhdar	L	ML	M	Taalbeya	L	ML	M	Taanayel	L	ML	M
Talamara	ML	ML	M	Tcheflik Edde Haouch	L	L	M	Tcheflik Qiqano	L	ML	M
Terbol Zahle	ML	ML	M	Touaite Zahle	L	L	M	Zahle Aradi	L	L	M
Zahle El-Berbara	L	ML	M	Zahle El-Maallaqa	L	ML	M	Zahle El-Midane	L	ML	M
Zahle Er-Rassiye	L	ML	M	Zahle Haouch El-Ouma	L	ML	M	Zahle Haouch El-Ouma	L	ML	M
Zahle Haouch Ez-Zara	L	ML	M	Zahle Maalaqa Aradi	L	ML	M	Zahle Mar Antonios	L	ML	M
Zahle Mar Elias	L	ML	M	Zahle Mar Gerios	L	ML	M	Zahle Saydet En-Naja	L	ML	M
Zebdoul	L	L	M								

Rachaiya

Municipality	30-Jan	31-Jan	01-Feb	Municipality	30-Jan	31-Jan	01-Feb	Municipality	30-Jan	31-Jan	01-Feb
Ain Arab Rachaiya	L	ML	M	Ain Ata	ML	L	M	Ain Harche	ML	L	M
Aqabe Rachaya	ML	L	M	Ayha	L	L	M	Ayta El Fokhar	L	ML	M
Bakifa Rachaya	L	L	M	Bakka	L	ML	M	Beit Lahya	ML	ML	M
Bireh Rachaiya	L	ML	M	Daher El Ahmar	L	ML	M	Deir El-Achayer	ML	ML	M
Heloua Rachaiya	L	ML	M	Hoch El Qannabeh Rac	ML	ML	M	Kaoukaba Bou Arab	L	L	M
Kfar Danis	L	ML	M	Kfar Mechki	ML	ML	M	Kfar Qouq	L	L	M
Kherbet Rouha	L	ML	M	Majdel Balhiss	L	L	M	Mdoukha	L	ML	M
Mhaydseh Rachaiya	L	L	M	Nabi Safa	ML	ML	M	Rachaiya	L	L	M
Rafid Rachaiya	L	L	M	Selsata (Mazraat Dei	L	ML	M	Tannoura	ML	ML	M
Yanta	L	ML	M								

Beyrouth

Beyrouth

Municipality	30-Jan	31-Jan	01-Feb	Municipality	30-Jan	31-Jan	01-Feb	Municipality	30-Jan	31-Jan	01-Feb
Achrafieh	M	ML	M	Ain el-Mreisse	M	L	M	Bachoura	M	M	M
Beirut Central Distr	M	L	M	Marfai	M	L	M	Mazraa	M	ML	M
Medaouar	M	L	M	Minet el-Hosn	M	ML	M	Mwssaitbeh	M	M	M
Ras Beirut	M	M	M	Rmeil	M	ML	M	Saifi	M	ML	M
Zqaq el-Blat	M	M	M								